



## Electronic Service Manuals

This electronic document is provided as a service to our customers. We do not create the contents of the information contained in this document. Should you have detailed questions pertaining to the information contained in this document, you may contact Michco, or the manufacturer which provided the original information in this electronic deliverable. Michco's only part in this electronic deliverable was the electronic assembly process. By providing this manual on line we are not guaranteeing parts availability.

You may contact Michco through the following methods:

Phone (517) 484-9312 or (800) 331-3339

2011 N. High St. -- Lansing, Michigan -- 48906

Fax: (517) 484-9836

Email: [CustServe@Michco.com](mailto:CustServe@Michco.com)

Web site: [www.Michco.Com](http://www.Michco.Com)

Parts Web site: [www.FloorMachineParts.Com](http://www.FloorMachineParts.Com)

Order Parts on Line at:

**[www.FloorMachineParts.Com](http://www.FloorMachineParts.Com)**

Directly to Parts & Service:

By Email: **[Shop@Michco.com](mailto:Shop@Michco.com)**

By Fax: (517) 702-2041

By Voice: Use numbers above.

**Serving the Cleaning Industry Since 1922**

Notice: All copyrighted material remains property of original owners, all trademarks are property of respective owners. Manuals are subject to Manufacturer's reproduction limitations. Originals or reproductions were provided by manufacturers through a request. We make no warranty as to the correctness of information provided in this document and you assume all risk. By placing these manuals on line we are not declaring our corporation to be an manufacturer authorized dealer or provider, please check our web site for authorized manufacturers we represent.

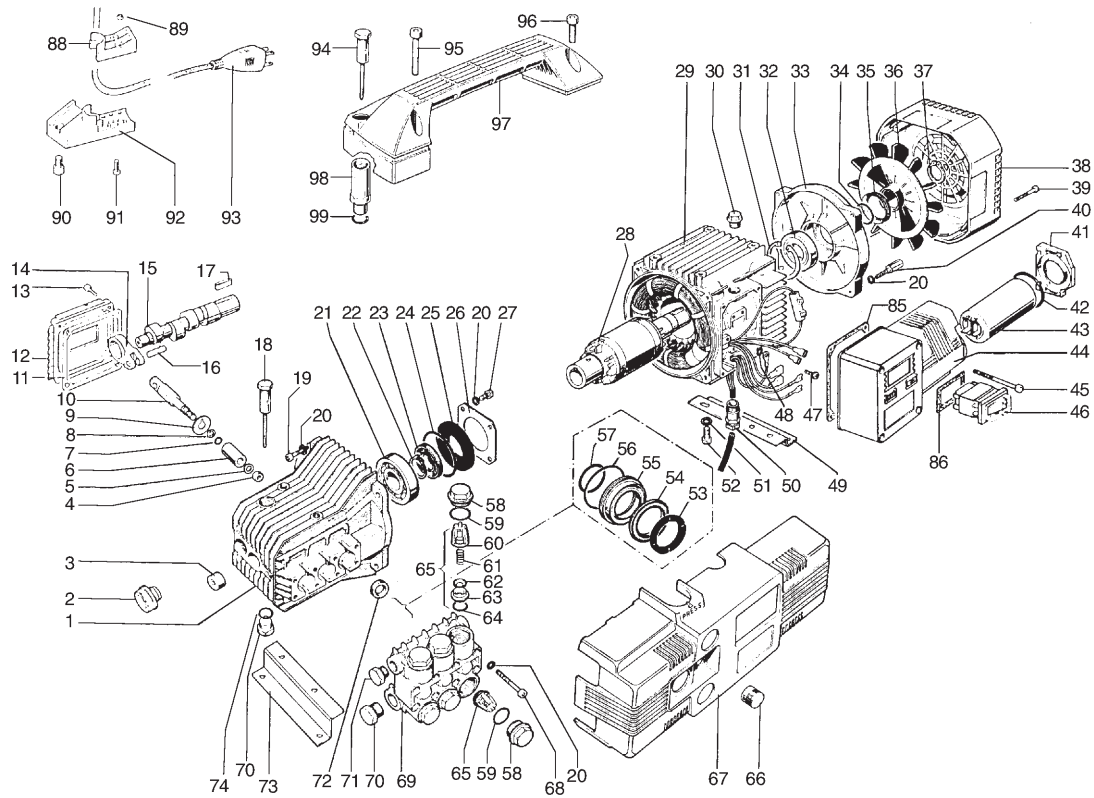


- This portable high-pressure washer makes the toughest clean-up tasks faster and easier. Weighing only 43 pounds, you can take it virtually anywhere.
- Ideal for light industrial applications and home owners to wash the car, the boat, the pool and patio. Use it to clean rain gutters, driveways, lawn equipment and recreational vehicles.
- Each unit comes complete with a 26-foot high-pressure hose, gun and lance with variable spray nozzle (up to 45°), adjustable pressure regulator and low-pressure soap injection system.
- Easy to carry – easy to use. Just remove the travel plug, attach to a garden hose, and plug into a standard 110V-15 amp circuit.\* Then you're ready to wash your troubles away.

***\*Must be plugged into a ground fault circuit or used with the optional GFCI cord.***

**SPECIFICATIONS**

Part Number	QUIKY
Max. Volume	2.1 GPM
Max. Discharge Pressure with MULTIREG	1000 PSI
Single-Phase Motor Power	1.5 HP
Motor Protector	Current Thermal Overload
Motor Protection Grade	ISO IP55
Max Inlet Water Temperature	140° F
Maximum Suction Depth	3.3 ft.
Hose Length	26 ft.
Cord Length	7 ft. Optional 35 ft. GFCI Cord Available U.L. Approved
Weight	42.8 lbs.
Oil Capacity	12 oz.
Oil type	General Pump Oil #100214 6-pack or #100216 24-pack
Dimensions	14.2 x 9.7 x 9.4 in.



**PARTS LIST**

ITEM	PART NO.	DESCRIPTION	KIT	QTY.	ITEM	PART NO.	DESCRIPTION	KIT	QTY.	ITEM	PART NO.	DESCRIPTION	KIT	QTY.
1.	51010022	Crankcase, Pump		1	31.	990079500	Ring, Snap, Ø52		1	60.	36200251	Guide, Valve		1 6
2.	47221251	Oil Level Indicator		1	32.	91832300	Bearing, Ball		1	61.	94737600	Spring, 9.4 x 15 mm, SS		1 6
3.	91801400	Bearing, Needle		1	33.	41070022	Cover, Rear Motor		1	62.	35200176	Plate, Valve, Spherical		1 6
4.	92221600	Nut, M8		3	34.	90385700	O-Ring, .937 x .103		1	63.	36200366	Seat, Valve		1 6
5.	96700800	Washer, M8		3	35.	90165200	Seal, Oil		1	64.	90384100	O-Ring, .674 x .103		1 6
6.	51040009	Piston		3	36.	41030051	Fan, Motor		1	65.	36703201	Valve Assembly	(1)	(Ref.)
7.	90357300	O-Ring, .208 x .070		3	37.	90062800	Ring, Snap, Ø24		1	66.	52212251	Knob		1
8.	90502200	Ring, Back-up, .244 x .354 x .059		3	38.	41040051	Cover, Fan		1	67.	51210351	Cover, Front		1
9.	96707000	Washer, M9		3	39.	99165800	Screw, M5 x 45		4	68.	99194300	Screw, M5 x 40, Zinc		8
10.	51050056	Guide, Piston		3	40.	41210465	Screw, Piston Shield, Rear		4	69.	51120041	Manifold, Brass		1
11.	90391700	O-Ring, 3.487 x .103		1	41.	41212051	Cover		1	70.	98210000	Cap, 3/8-19 BSPP, Brass		2
12.	51160022	Cover, Rear Crankcase		3	42.	90388500	O-Ring, 1.799 x .103		1	71.	98204100	Cap, 1/4-19 BSPP, Brass		1
13.	99186700	Screw, M6 x 18, Zinc		4	43.	93569400	Condenser		1	72.	90156500	Ring, Oil Seal, 15 x 24 x 5 mm	83	3
14.	51030022	Rod, Connecting		3	44.	41212451	Switch Box		1	73.	51200274	Mounting Rail, Pump Side		1
15.	51020435	Crankshaft		1	45.	99170500	Screw, M5 x 65, Zinc		4	74.	90383300	O-Ring, .549 x .103		1
16.	97731000	Pin, Connecting Rod		3	46.	93502800	Switch, 22/18A Single Pole		1	85.	41210147	Gasket		1
17.	91487700	Key		1	47.	99151500	Screw, M5 x 12, Zinc		1	86.	41212684	Gasket, Switch		1
19.	99189700	Screw, M6 x 25, Zinc		4	48.	96691300	Washer, #10		1	88.	41211951	Clamp, Cable		1
20.	96693800	Washer, 1/4"		20	49.	51200374	Mounting Rail, Motor Side		1	89.	92192600	Nut, M4		2
21.	91832800	Bearing, Ball		1	50.	93521000	Nut, Cable Retaining, 3/8-19 BSPP		1	90.	99303900	Screw, M8 x 16		1
22.	90063500	Ring, Snap, Ø25		1	51.	96701400	Washer, 5/16"		4	91.	99130600	Screw, M4 x 16		2
23.	90163400	Ring, Oil Seal, 25 x 42 x 7		1	52.	99303700	Screw, M8 x 16, Zinc		4	92.	41211851	Bracket, Cable Clamp		1
24.	90409700	O-Ring, 2.187 x .139		1	53.	51100051	Ring, Head	96, 97	3	93.	10605901	Cord w/GFCI, 35 ft.		1
25.	50211551	Spacer, Crankcase		1	54.	90262000	Packing, 15 mm	96, 97	3	94.	98209700	Oil Dipstick		1
26.	50150074	Cover, Crankcase		1	55.	51080070	Retainer, Packing	86, 96	3	95.	99314400	Screw, M8 x 50, Zinc		2
27.	99180700	Screw, M6 x 10, Zinc		4	56.	90360400	O-Ring, .989 x .070	86, 96, 97	3	96.	99306900	Screw, M8 x 25, Zinc		2
28.	41330802	Rotor, 2 HP 1 Phase, 4 Pole		1	57.	90383500	O-Ring, .593 x .103	86, 96, 97	3	97.	51240051	Handle		1
29.	41322602	Stator, 2 HP		1	58.	98221800	Plug, Valve, M24	84	6	98.	51210051	Spacer, Oil Dipstick		1
30.	98209300	Plug, 3/8-19 BSPP, Plastic, Black		1	59.	90384700	O-Ring, .797 x .103	84	6	99.	90383300	O-Ring, .549 x .103		2

**REPAIR KITS**

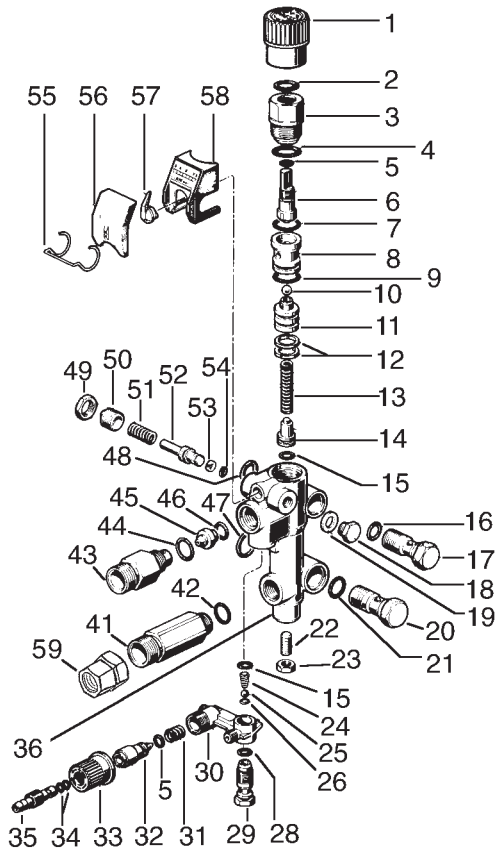
KIT NO.	1	83	84	86	96	97
ITEM NO'S INCLUDED	60, 61, 62, 63, 64, (65)	72	58, 59	55, 56, 57	53, 54, 55, 56, 57	53, 54, 56, 57
NUMBER OF ASSEMBLIES	6	3	6	3	1	3
CYLINDERS SERVICED	3	3	3	3	3	3

**TORQUE SPECS\***

Position	Ft.-lbs.
68	8.8
4	11
13	7.3
19	7.3
27	7.3
39	1.1
40	6.6
45	1.6
58	33.1
70	29.4
71	14.7

\*Decrease torque by 20% if threads are lubricated.

# Z0KR1 PRESSURE REGULATOR



ITEM	PART NO	DESCRIPTION	KIT	QTY.
1.	36258351	Knob, Adjusting	1	
2.	90383500	O-Ring, .594 x .103	95	1
3.	36255670	Screw, Pressure Adjusting	1	
4.	90384700	O-Ring, .797 x .103	95	1
5.	90358000	O-Ring, .344 x .070	94,95	2
6.	36257402	Piston, Unloader	1	
7.	90359800	O-Ring, .801 x .070	95	1
8.	36255466	Seat, Valve	95	1
9.	90359600	O-Ring, .739 x .070	95	1
10.	97480200	Ball, 9/32"	95	1
11.	36257270	Piston, .089	1	
12.	90508000	Ring, Back-up	95	2
13.	94734400	Spring, .295 x 1.575	95	1
14.	36255270	Support, Spring	1	
15.	90358200	O-Ring, .364 x .070	94,95	2
16.	90382000	O-Ring, .359 x .103	95	1
17.	36256770	Fitting, Banjo, 3/8-19 BSPP	1	
18.	98196600	Plug, Hex Head, 1/8-28 BSPP	1	
19.	96710000	Washer, Flat, .394 x .551 x .059	1	
20.	36256870	Fitting, Banjo, 3/8-19 BSPP	1	
21.	90382700	O-Ring, .469 x .103	95	1
22.	99305400	Screw, Set, Socket, Headless, M8 x 20	1	
23.	92221800	Nut, Jam, M8	1	
24.	94821700	Spring, Conical, .169 x .287 x .433	94	1
25.	97478200	Ball, 7/32"	94	1
26.	90357200	O-Ring, .208 x .070	94	1
28.	90358500	O-Ring, .426 x .070	94	1
29.	36256370	Seat, Valve	1	
30.	36256251	Body, Chemical Injector	1	
31.	94738300	Spring, .384 x .394	94	1
32.	36256470	Needle, Valve	1	
33.	36256551	Knob, Adjusting	1	

ITEM	PART NO	DESCRIPTION	KIT	QTY.
34.	90357000	O-Ring, .176 x .070	94	2
35.	36256670	Hose Barb	1	
36.	36258241	Body, Valve	1	
41.	36258470	Nipple, Inlet, 1/2 NPT	1	
42.	90359100	O-Ring, .551 x .070	95	1
43.	10031870	Nipple, Outlet, 3/8 NPT	1	
44.	90383200	O-Ring, .549 x .103	94	1
45.	10030751	Nozzle, .071	1	
46.	90382200	O-Ring, .391 x .103	94	1
47.	90383900	O-Ring, .625 x .103	95	1
48.	90383300	O-Ring, .549 x .103	95	1
49.	92249200	Nut, Jam, M14	1	
50.	36258070	Screw, Adjusting, M14 x 1	1	
51.	94733800	Spring, .283 x .709	1	
52.	36257970	Piston, Gauge	1	
53.	90500700	Ring, Back-up	95	1
54.	90356800	O-Ring, .145 x .070	95	1
55.	94871800	Clip, Spring	1	
56.	36257751	Cover, Gauge	1	
57.	36257851	Needle, Gauge	1	
58.	36258601	Face, Gauge	1	
59.	100276	Garden Hose Swivel Adapter	1	

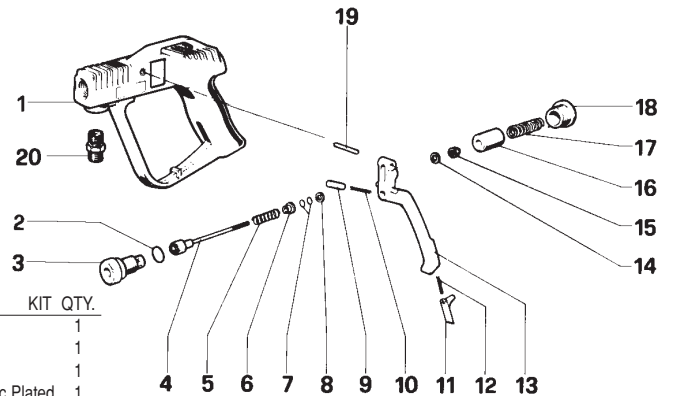
KIT NO.	95 (KR)
ITEM NO'S INCLUDED IN KIT	2, 4, 5, 7, 8, 9, 10, 12, 13, 15, 16, 21, 39, 42, 47, 48, 53, 54
NUMBER OF ASSEMBLIES IN KIT	1

# P11 GUN

ITEM	PART NO.	DESCRIPTION	KIT	QTY.
1.	18205602	Body, Gun	1	
2.	90384100	O-Ring, .674 x .103	52	1
3.	18205902	Seat, Valve, Brass OT58	52	1
4.	18204402	Rod	52	1
5.	94737800	Spring	1	
6.	18204270	Spring, Guide	1	
7.	90356800	O-Ring, .145 x .070, Viton	52	2
8.	90500700	Ring, Back-up	52	1
9.	18205370	Shaft	1	
10.	94730500	Spring	1	
11.	18205051	Latch	1	
12.	94730300	Spring	1	
13.	18204851	Trigger	1	
14.	96684000	Washer, M4.25	1	
15.	92193500	Nut, Self-locking, M4	1	
16.	18205270	Guide, Spring	1	

KIT NO.	52
ITEM NO'S INCLUDED IN KIT	2, 3, 4, 7, 8
NUMBER OF ASSEMBLIES IN KIT	1

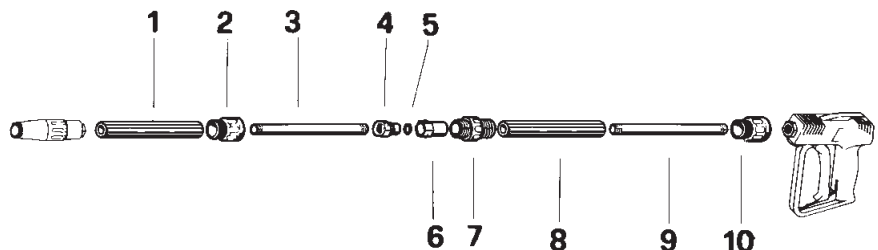
ITEM	PART NO.	DESCRIPTION	KIT	QTY.
17.	94741400	Spring, .3 x 44.5 mm	1	
18.	98219000	Cap	1	
19.	97615500	Pin, Split	1	
20.	95284000	Fitting, Inlet, Steel, Zinc Plated	1	



# QUICK LANCE

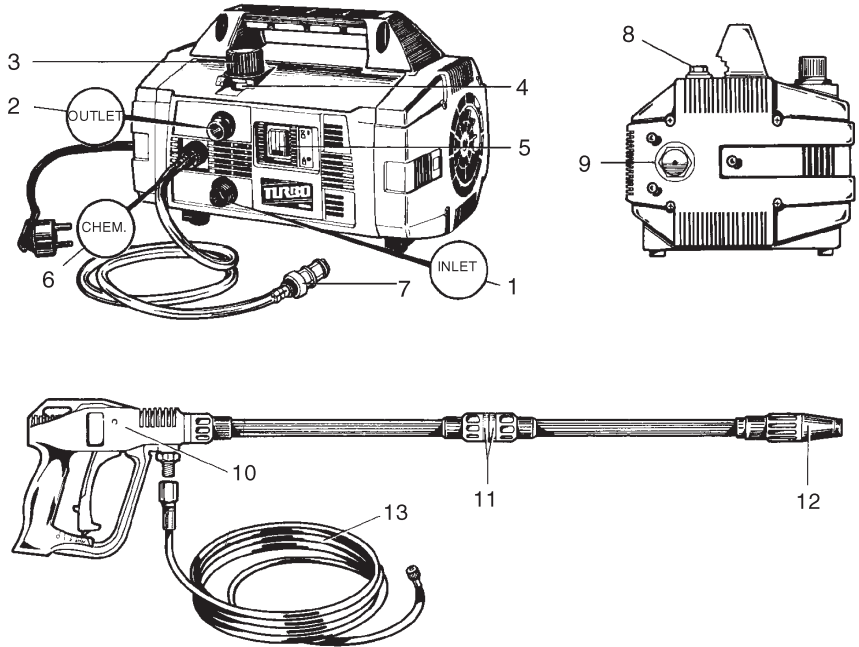
ITEM	PART NO.	DESCRIPTION	KIT	QTY.
1.	18010698	Grip, Hand, PVC	*	1
2.	10029551	Nut, Ring, Polyamide Type 6	*	1
3.	18203389	Tube	*	1
4.	10029770	Coupling, Male, Brass OT58	*	1
5.	90382000	O-Ring, .359 x .103, Viton	*	1
6.	10029870	Coupling, Female, Brass OT58	†	1
7.	10029651	Coupler, Polyamide Type 6	†	1
8.	18010498	Grip, Hand	†	1
9.	18203389	Tube, Steel Fe35-1 (Zinc Plated)	†	1
10.	10029451	Sleeve, Protection	†	1

\* ZOZQUIK2 QUIK2 LANCE  
 † ZOZFIXUP FIXUP LANCE



### Standard Equipment

1. Inlet (1/2" NPT-M)
2. Outlet (3/8" NPT-M)
3. Pressure Adjustment Knob
4. Pressure Indicator
5. On/Off Switch
6. Chemical Regulator
7. Chemical Filter (Z0FILKIT)
8. Oil Dipstick
9. Oil Level Indicator
10. Automatic Gun (ZGP11)
11. Quick-Lance (QUIK2 + Z0FIXUP)
12. Multireg Nozzle (Z0MULTIREG99)
13. High-Pressure Hose (Z0TUBIN)
14. Adapter (3/4 GH x 1/2" NPT) (100276)



### Optional Equipment

