



Electronic Service Manuals

This electronic document is provided as a service to our customers. We do not create the contents of the information contained in this document. Should you have detailed questions pertaining to the information contained in this document, you may contact Michco, or the manufacturer which provided the original information in this electronic deliverable. Michco's only part in this electronic deliverable was the electronic assembly process. By providing this manual on line we are not guaranteeing parts availability.

You may contact Michco through the following methods:

Phone (517) 484-9312 or (800) 331-3339

2011 N. High St. -- Lansing, Michigan -- 48906

Fax: (517) 484-9836

Email: CustServe@Michco.com

Web site: www.Michco.Com

Parts Web site: www.FloorMachineParts.Com

Order Parts on Line at:

www.FloorMachineParts.Com

Directly to Parts & Service:

By Email: **Shop@Michco.com**

By Fax: (517) 702-2041

By Voice: Use numbers above.

Serving the Cleaning Industry Since 1922

Notice: All copyrighted material remains property of original owners, all trademarks are property of respective owners. Manuals are subject to Manufacturer's reproduction limitations. Originals or reproductions were provided by manufacturers through a request. We make no warranty as to the correctness of information provided in this document and you assume all risk. By placing these manuals on line we are not declaring our corporation to be an manufacturer authorized dealer or provider, please check our web site for authorized manufacturers we represent.

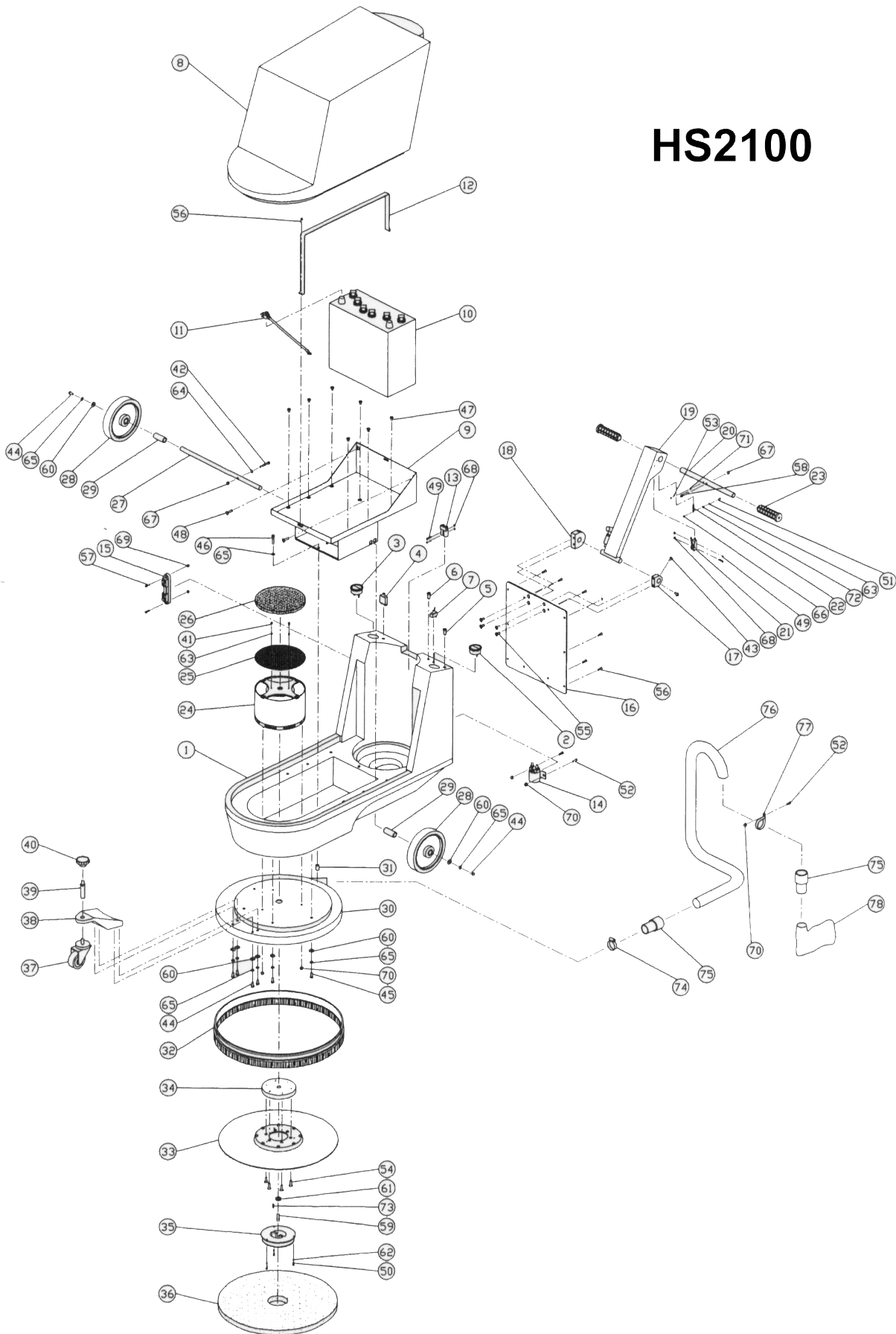
Eagle Power

HSB21 Battery Burnisher



OPERATION AND PARTS MANUAL

HS2100



HS2100 PARTS LIST

Item No.	Qty	Part No.	Description
1	1	001	Lower Body Housing
2	1	002	Battery Condition Meter
3	1	003	RPM Meter
4	1	004	60A Circuit Breaker
5	1	005	36VDC Indicator Light-Red
6	1	006	36VDC Indicator Light- Green
7	1	007	Toggle Switch
8	1	008	Upper Hood Cover
9	1	009	Battery Frame Assembly
10	3	010	12V Battery
11	2	011	Battery Cable
12	1	012	Battery Strap
13	1	013	Electrical Plug
14	1	014	DC Contactor
15	1	015	Shunt
16	1	016	Rear Panel
17	1	017	Handle Adjusting Block
18	1	018	Handle Positioning Block
19	1	019	Handle Assembly
20	1	020	Handle Tube
21	1	021	Snap Switch
22	1	022	Throttle Spring
23	2	023	Handle Grip
24	1	024	2.5 hp. 36VDC Motor
25	1	025	Screen
26	1	026	Screen Rubber Trim
27	1	027	Axle
28	2	028	Wheel
29	2	029	Wheel Spacer
30	1	030	Pad Skirt
31	1	031	Pad Skirt Spacer
32	1	032	Brush Skirt
33	1	033	21" Pad Driver Assembly
34	1	034	Pad Driver Adapter
35	1	035	Pad Retainer
36	1	036	Buffer Pad
37	1	037	Caster Wheel
38	1	038	Caster Yoke
39	1	039	Caster Axle & Nut
40	1	040	Caster Mount Bracket
41	1	041	Caster Stem Adapter
42	1	042	Caster Knob
43	2	043	#10-24x 3/8 Hex Head Bolt
44	2	044	5/16-18x 5/8 Hex Head Bolt
45	8	045	5/16-18x 3/4 Hex Head Bolt

HS2100 PARTS LIST

Item No.	Qty	Part No.	Description
46	1	046	5/16-18x 1 1/2 Hex Head Bolt
47	7	047	5/16-18x 1/2 Slotted Flat Head Undercut Machine Screw
48	4	048	5/16-18x 1 Slotted Truss Head Machine Screw
49	4	049	#6-32x 1 Slotted Pan Head Machine Screw
50	3	050	#8-32x 1/2 Slotted Pan Head Machine Screw
51	3	051	#10-32x 1 Slotted Pan Head Machine Screw
52	3	052	1/4-20x 3/4 Slotted Pan Head Machine Screw
53	1	053	#8-32x 1 Slotted Round Head Machine Screw
54	6	054	1/4-20x 1 Flat Head Socket Cap Screw
55	4	055	5/16-18x 3/4 Flat Head Socket Cap Screw
56	10	056	1/4-20x 5/8 Button Head Socket Cap Screw
57	1	057	1/4-20x 1 1/2 Button Head Socket Cap Screw
58	1	058	1/4-20x 1 1/2 Socket Head Cap Screw
59	1	059	3/8-24x 1 Socket Head Cap Screw
60	1	060	1/4 Flat Washer
61	10	061	5/16 Flat Washer
62	1	062	3/8 Flat Washer
63	3	063	#8 Lock Washer
64	3	064	#10 Lock Washer
65	11	065	5/16 Lock Washer
66	1	066	#10-32 Lock Nut
67	2	067	1/4-20 Lock Nut
68	4	068	#6-32 Flanged Nut
69	2	069	#10-32 Flanged Nut
70	7	070	1/4-20 Flanged Nut
71	1	071	#8-32 Nut
72	1	072	#10-32 Nut
73	1	073	1/4-20 Nut
74	1	074	3/16x3/16x1 Key
75	1	075	1/4-20 Eye Bolt
76	1	076	Hose Clamp
77	2	077	Vacuum Cuff
78	1	078	Vacuum Tubing
79	1	079	Tubing Clip
80	1	080	Vacuum Bag

INSTRUCTIONS

Operating instructions:

1. Make sure burnish pad is on and attached properly. See “**Pad changing instructions**”.
2. Adjust pressure on burnish pad by turning “**Caster knob**” clockwise to reduce pressure on burnish pad.
3. Move “**Toggle switch**” to “**On**” position; green light will be on.
4. Check “**Battery condition meter**” before operating. Meter should be in the “**working range**” to operate.
5. Adjust handle to proper operating position height by lifting pin at left side of handle and raising or lowering the handle to desired position. Then insert pin in nearest hole.
6. Twist handgrips forward to operate.
7. Check “**RPM meter**” for proper gauge pressure. See “**Adjusting pad pressure**” for instructions.

Pad changing instructions:

1. Tilt machine back toward handle. Front of machine should be off of the ground about 10-12 inches.
2. Unscrew blue “**Pad retainer**” by turning counterclockwise. Blue retainer must be removed before replacing pad.
3. Remove pad for replacement.
4. Replace blue “**Pad retainer**” and tighten by turning clockwise. Tighten blue retainer until it bottoms out. Do not over tighten.

Adjusting pad pressure:

1. With machine turned on and handgrips in the operating position, check “**RPM meter**” for pressure:
 - a. **Black area** – pressure is too low.
 - b. **Green area** – pressure is good.
 - c. **Red area** – pressure is too high.
2. To adjust to desired pressure:
 - a. Turn “**Caster knob**” clockwise to raise pad and reduce pressure.
 - b. Turn “**Caster knob**” counterclockwise to lower pad and increase pressure.
3. For the best performance, “**RPM meter**” should be kept in the “**green**” area. A green arrow above the green area indicates the best pressure.

Note: Too much pad pressure may trip the circuit breaker. See “Problem solution**” to reset breaker.**

INSTRUCTIONS (cont.)

Charging batteries:

1. See instructions on charger **before** operating.
2. Move “**Toggle switch**” to “**Off**” position; green light will be off.
3. Lift and remove “**Upper hood cover**”.
4. Place charger plug into mating plug on machine located on the left side behind batteries. Plug will only connect together one way. Charger plug must go into plug on the machine to function properly.
5. Then plug charger into grounded 110-volt outlet.
Note: Burnisher should not be turned on when charging.
6. Disconnect charger at 110-volt outlet and at burnisher before operating.

Breaker tripped:

1. Move “**Toggle switch**” to “**Off**” position; green light will be off.
2. Push down breaker on the right side to reset.
3. Raise the burnish pad by turning “**Caster knob**”. See “**Adjusting pad pressure**” for instructions.

Preventive maintenance:

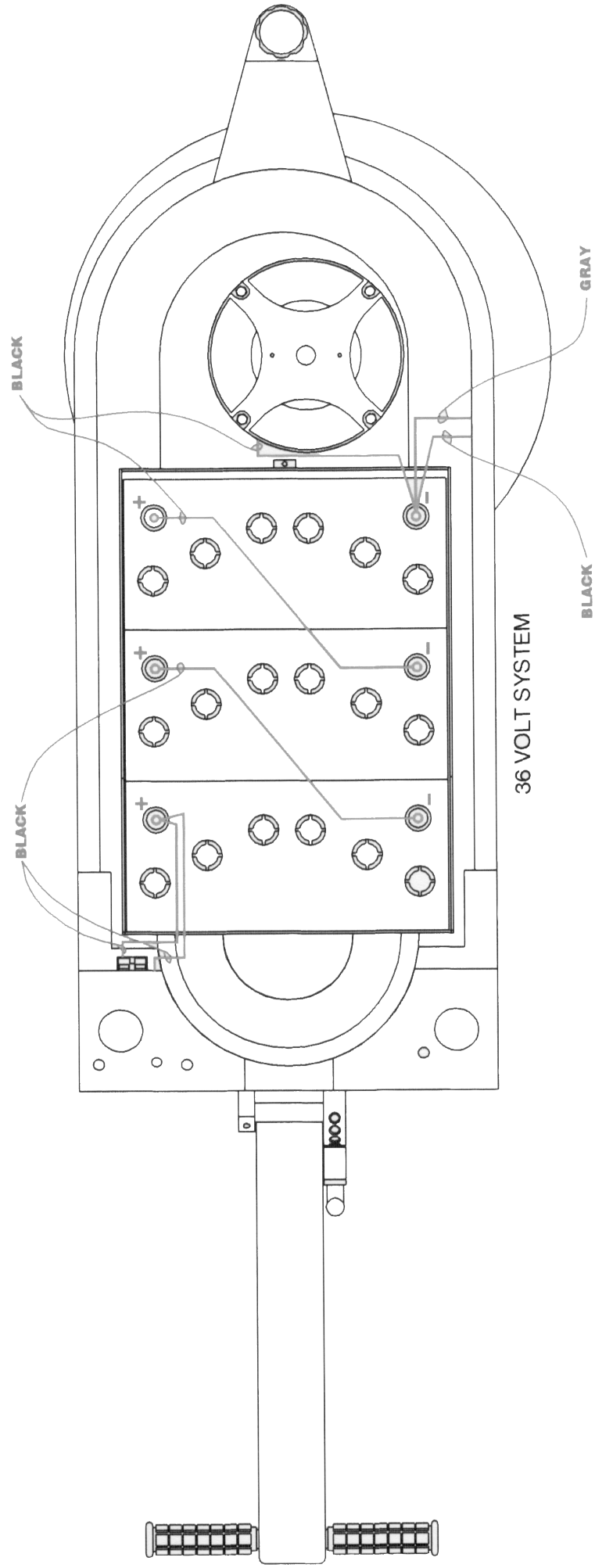
1. Check batteries for water level each week.
2. Check batteries with a hydrometer every month.
3. Check battery connections each week.
4. Clean battery terminals every month.
5. Clean dust screen before each use.
6. Clean dust filter before each use.
7. Empty vacuum bag after each use.
8. Check for any loose bolts or screws every month.

INSTRUCTIONS (cont.)

Trouble shooting:

1. Green light will not come on.
 - a. Check batteries.
 - b. Check battery connections.
 - c. Check circuit breaker.
 - d. Check wire connections to light.
 - e. Check light.
2. Motor will not run.
 - a. Check batteries.
 - b. Check battery connections.
 - c. Check wire connections to switch.
 - d. Check wire connections to motor.
 - e. Check motor.
 - f. Check circuit breaker.
3. Red light on panel is on.
 - a. Check brushes on motor.
 - b. Check wires to motor.
 - c. Check wire connections to light.
4. Circuit breaker is tripped.
 - a. Check pad pressure.
 - b. Check motor.
 - c. Check wires.

UNDER HOOD ELECTRICAL CONNECTIONS



Eagle Power

Warranty Policy

Limited Warranty

Eagle Power Products (EPP) warrants new cleaning equipment against defects in material and workmanship under normal use and service to the original purchaser as detailed below.

10 Years

Subject to the conditions stated below, EPP warrants polyethylene tanks and housings to be free from defects in materials and workmanship for a period of ten years.

3 Years

Subject to the conditions stated below, EPP warrants all automatic scrubber components to be free from defects in materials and workmanship for a 3-year period. Parts replaced or repaired are warranted for the remainder of the original warranty period.

1 Year

Subject to the conditions stated below, EPP warrants all other cleaning equipment components to be free from defects in materials and workmanship for a 1-year period. Parts replaced or repaired are warranted for the remainder of the original warranty period. Batteries are prorated for one year.

EPP will furnish and charge for replacement parts, including transportation, to the original owner through an EPP authorized service center. If the part is returned within 30 days and is found defective, the owner will be credited for the cost of the replacement part including shipping and handling.

Labor charges are covered for one year from the date of purchase if provided by an authorized EPP service center. Travel is covered for 90 days for battery operated equipment only.

Wear items exempt from warranty include belts, carbon brushes, power cords, wheels, pad drivers, clutch plates, brushes, pads, handle grips, filters, screens, throttle cables, and squeegees.

This warranty shall not apply to failures caused by misuse or abuse, improper maintenance as stated in the operation manuals, use of unauthorized repair parts, repairs by other than an EPP authorized service center, and damage in transit.

EPP disclaims and denies any liability for any direct, indirect, special incidental or consequential damage which may be suffered as a result of sale, delivery, servicing, use, loss of any product, downtime, labor, freight, or other charges not expressly included herein.

Date Purchased: _____

Model Number: _____

Serial Number: _____

Please be sure to record this information. This information will be necessary for future warranty claims.



1174 Northland Drive Mendota Heights, MN 55120
651.686.5399 Fax 651.686.5695
www.eaglepower.com

Eagle Power Products Sales and Service Provided by: