



Electronic Service Manuals

This electronic document is provided as a service to our customers. We do not create the contents of the information contained in this document. Should you have detailed questions pertaining to the information contained in this document, you may contact Michco, or the manufacturer which provided the original information in this electronic deliverable. Michco's only part in this electronic deliverable was the electronic assembly process. By providing this manual on line we are not guaranteeing parts availability.

You may contact Michco through the following methods:

Phone (517) 484-9312 or (800) 331-3339

2011 N. High St. -- Lansing, Michigan -- 48906

Fax: (517) 484-9836

Email: CustServe@Michco.com

Web site: www.Michco.Com

Parts Web site: www.FloorMachineParts.Com

Order Parts on Line at:

www.FloorMachineParts.Com

Directly to Parts & Service:

By Email: **Shop@Michco.com**

By Fax: (517) 702-2041

By Voice: Use numbers above.

Serving the Cleaning Industry Since 1922

Notice: All copyrighted material remains property of original owners, all trademarks are property of respective owners. Manuals are subject to Manufacturer's reproduction limitations. Originals or reproductions were provided by manufacturers through a request. We make no warranty as to the correctness of information provided in this document and you assume all risk. By placing these manuals on line we are not declaring our corporation to be an manufacturer authorized dealer or provider, please check our web site for authorized manufacturers we represent.

Eagle Power™

Products Group



LOTUS 15 CYLINDRICAL SCRUBBER/ DRYER

ENTER 

PARTS MANUAL



Click on icon to
return to this page.

← Back 1 page

Lotus 15 Cylindrical Scrubber/Dryer

*Chassis, Brush &
Vac Motor Assembly*

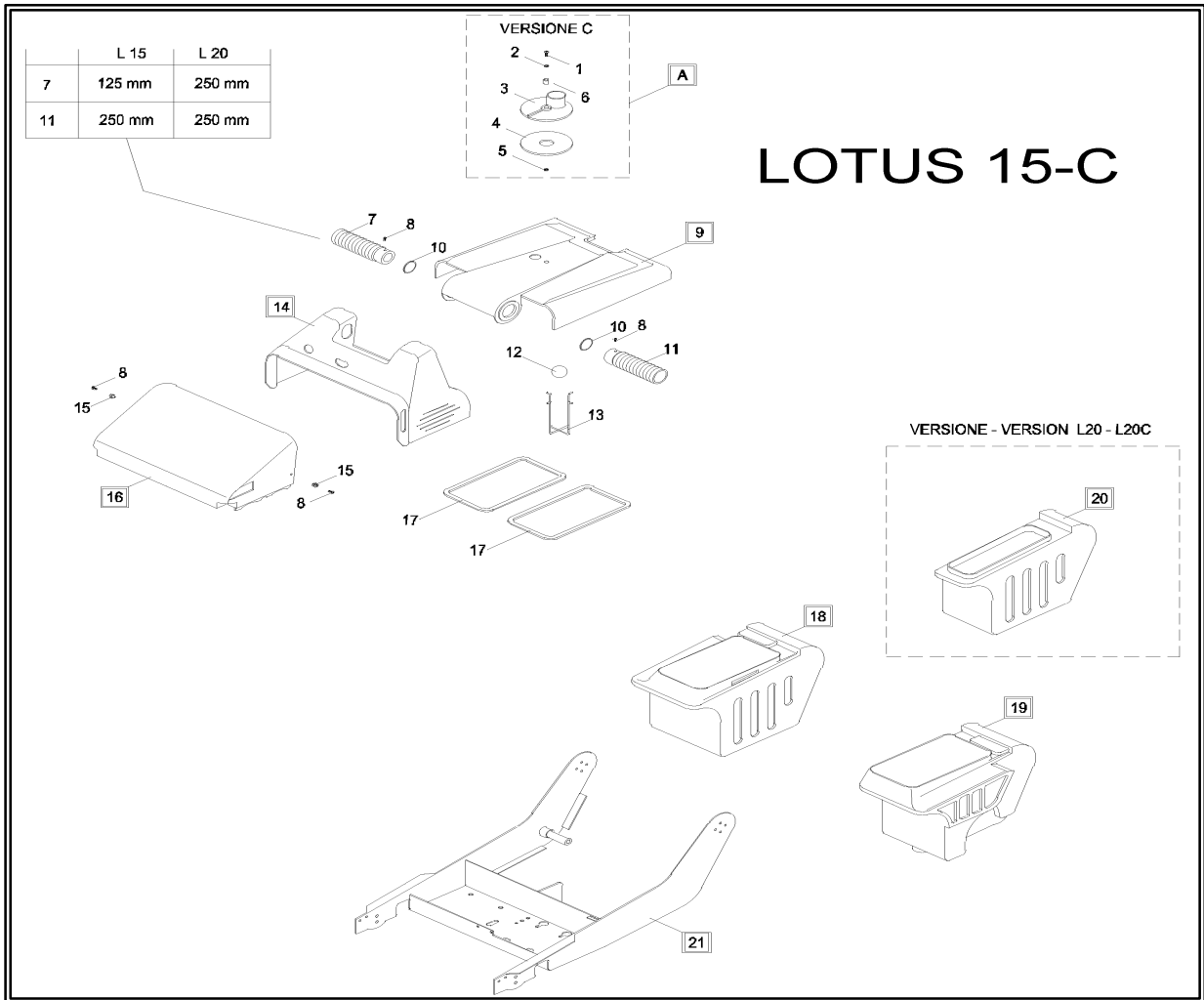
Brush Assembly

Handle & Control Assembly

Pump & Squeegee Assembly



LOTUS 15 - CHASSIS, BRUSH & VAC MOTOR ASSEMBLY



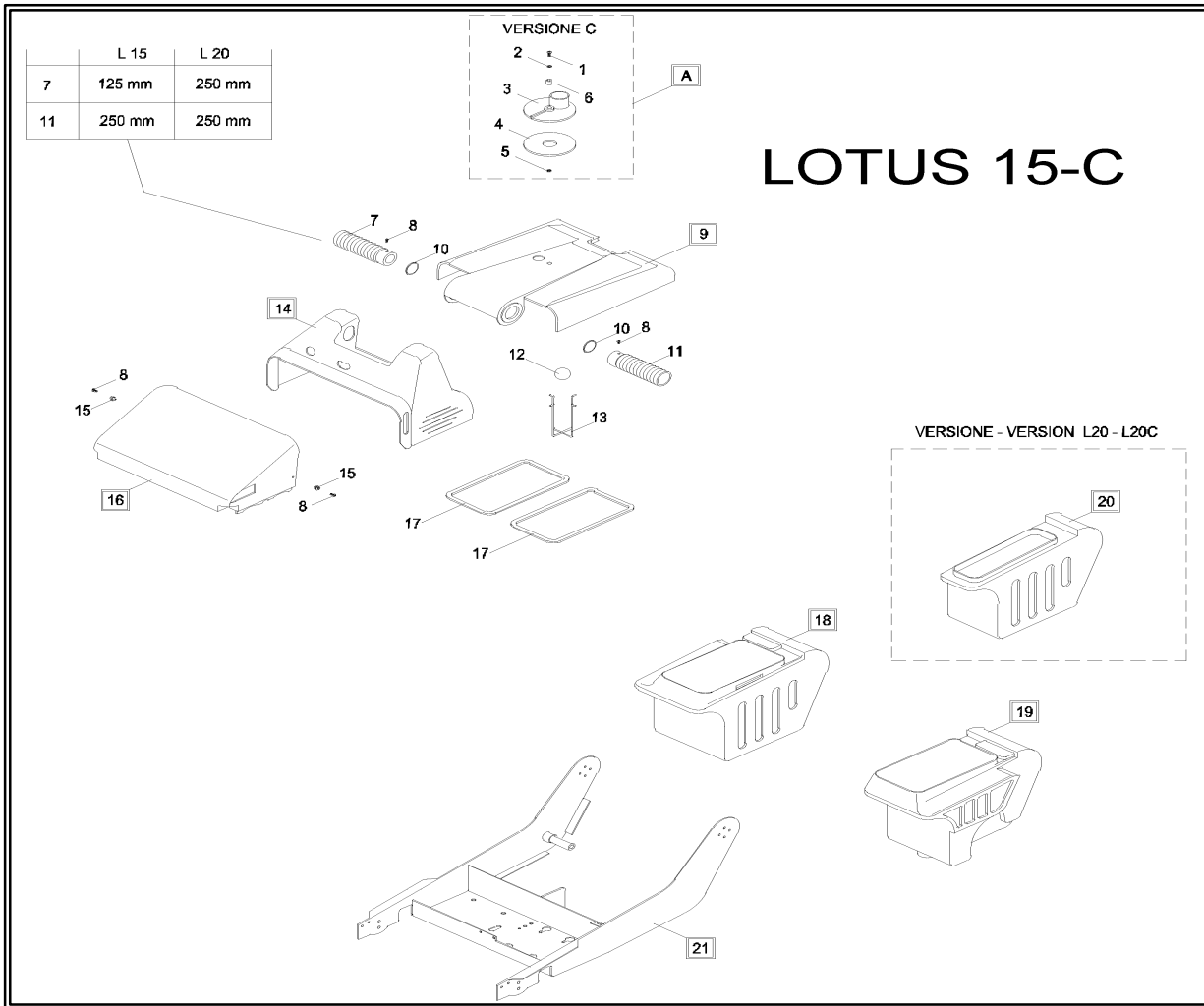
LOTUS 15 - CHASSIS, BRUSH & VAC MOTOR ASSEMBLY

POSITION	PART NUMBER	DESCRIPTION
1	1105802	Screw, TCTC 4x30 INOX
2	1105330	Washer, uni 6593 4x12 INOX
3	21202039	Suction accessory connection
4	21602009	Gasket for accessory connection, L 15
5	1105806	M4 split threaded rivet
6	21102023	Bushing
7	25002008	FLEX pipe, 120 mm L 15
8	1105793	Self tapping screw 3,9x13
9	***	Cover
10	1160048	3137 O-ring
11	25002007	FLEX pipe, 250 mm L 15
12	25002004	Ball for float, L 15
13	25002003	Cage for float, L 15
14	***	Bonnet



← Back 1

LOTUS 15 - CHASSIS, BRUSH & VAC MOTOR ASSEMBLY



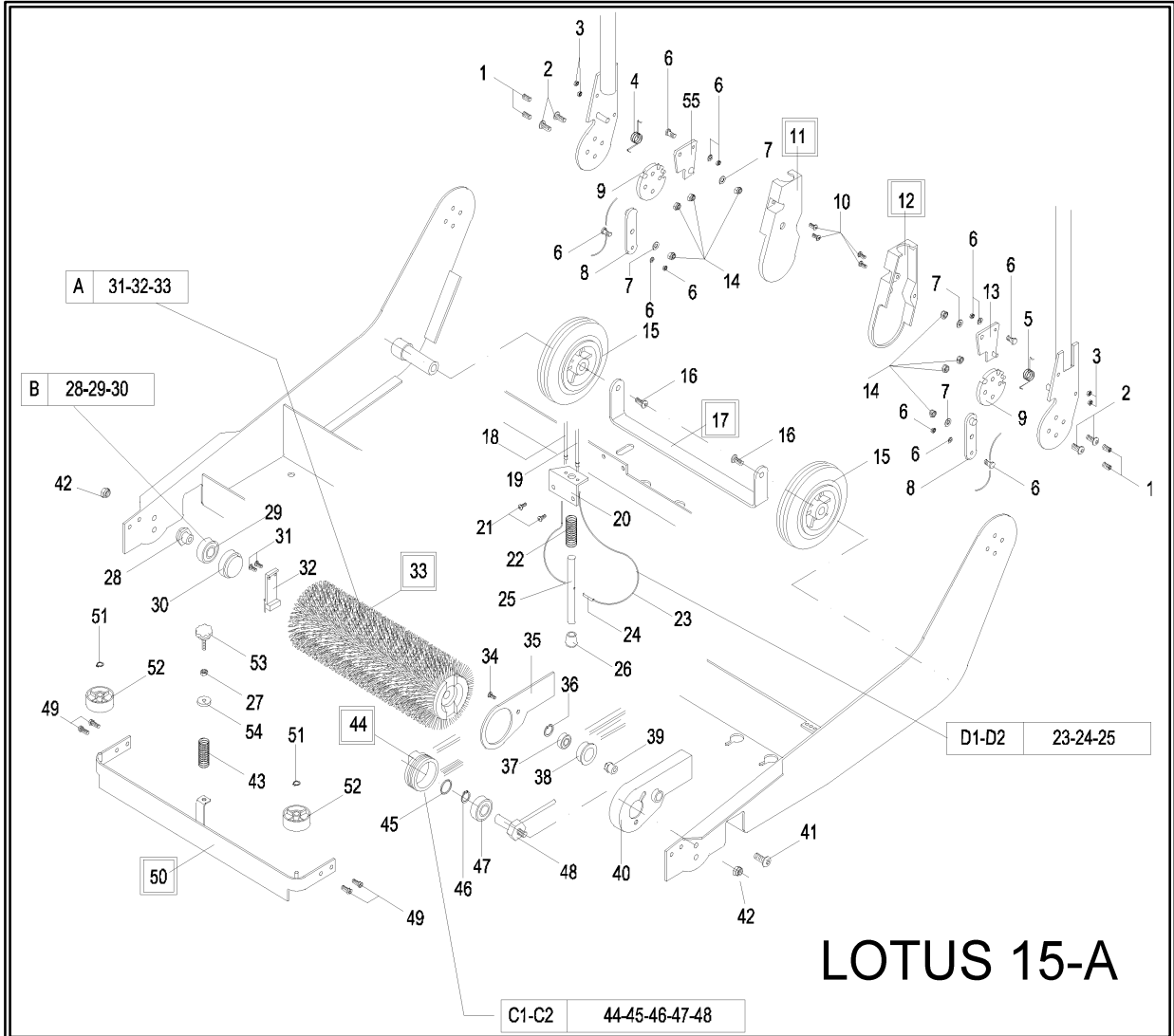
LOTUS 15-C

LOTUS 15 - CHASSIS, BRUSH & VAC MOTOR ASSEMBLY

POSITION	PART NUMBER	DESCRIPTION
1	1105802	Screw, TCTC 4x30 INOX
2	1105330	Washer, uni 6593 4x12 INOX
3	21202039	Suction accessory connection
4	21602009	Gasket for accessory connection, L 15
5	1105806	M4 split threaded rivet
6	21102023	Bushing
7	25002008	FLEX pipe, 120 mm L 15
8	1105793	Self tapping screw 3,9x13
9	***	Cover
10	1160048	3137 O-ring
11	25002007	FLEX pipe, 250 mm L 15
12	25002004	Ball for float, L 15
13	25002003	Cage for float, L 15
14	***	Bonnet



LOTUS 15 - BRUSH ASSEMBLY



LOTUS 15 - BRUSH ASSEMBLY

POSITION	PART NUMBER	DESCRIPTION
1	1105606	Spring cotter, 4x16 din 1481
2	1105182	Screw, iso 7380 6x22 zb
3	1105121	Nut, uni 5588 M4
4	22052006	Spring for right hand lever
5	22052007	Spring for left hand
6	1125027	Clamp micro
7	1105786	Washer, uni 6592 6x18
8	21902009	Lifting lever,
9	21302010	Gear wheel,
10	1105781	Screw uni 5933 4x12 zb
11	21202009	Casing for the rh handle articulation, L15
11	21202130	Casing for the rh handle articulation, L20



LOTUS 15 - BRUSH ASSEMBLY

POSITION	PART NUMBER	DESCRIPTION
12	21202010	Casing for the lh handle articulation, L15
12	21202131	Casing for the lh handle articulation, L20
13	21902005	Left hand articulation lever,
14	1105133	Lock nut, M6 din 982
15	22502031	Wheel Ø 150 - 40 - 70
16	1105789	Screw, uni 5387 6x10
17	22602016	Rear wheel axle support, L15
17	22602025	Rear wheel axle support, L20
18	21252000	Lifting rod cable sheath, rh 1 865
19	21252004	Sheath for the lifting rod cable, lh 1720
20	22602011	Lifting bracket,
21	1105793	Self tapping screw, uni 6594 3.9x13
22	22052011	Spring, Ø 16x72x2
23	21252001	Cable for the lifting rod, L15
23	21252010	Cable for the lifting rod, L20
24	1105607	Spring cotter, 4x36 din 1481
25	21002002	Machine lifting rod L15-L20
26	1320090	Cable cap, Ø 10
27	1105123	Nut, uni 5588 M 6
28	22302012	Brush pin, L15-L20
29	1390006	Bearing 6002 2RS
30	21102017	Bushing for 6002 2RS bearing
31	1105794	Self tapping screw + uni 6954 3.9x16
32	21902001	Brush hooking lever,
33	23502006	Brush, dia. 100X375 Nylon
33	23502005	Brush, dia. 100X375 Natural brush
33	23502007	Brush, dia. 100X375 Tynex
33	23502009	Brush, dia. 100X490 Nylon
33	23502008	Brush, dia. 100X490 Natural brush
33	23502010	Brush, dia. 100X490 Tynex
34	1105493	Screw, TCTC 4x10 INOX
35	21202011	Belt guard lock,
36	1105701	Inner snap ring, din 472 Ø 22
37	1390005	Bearing 608 2RS
38	22502002	Belt tightening roller
39	22302019	Pin for the belt tightening roller L15
39	22302013	Pin for the belt tightening roller L20
40	21202012	Belt guard,
41	1105234	Screw, iso 7380 6x10
42	1105134	Self-locking screw, din 985 M8
43	22052010	Compression spring CO-41
44	22502000	Driven pulley, L15
44	22502035	Driven pulley, L20
45	1160056	Corteco gasket 12-22-5
46	1105422	Outer snap ring, din 471 Ø 20

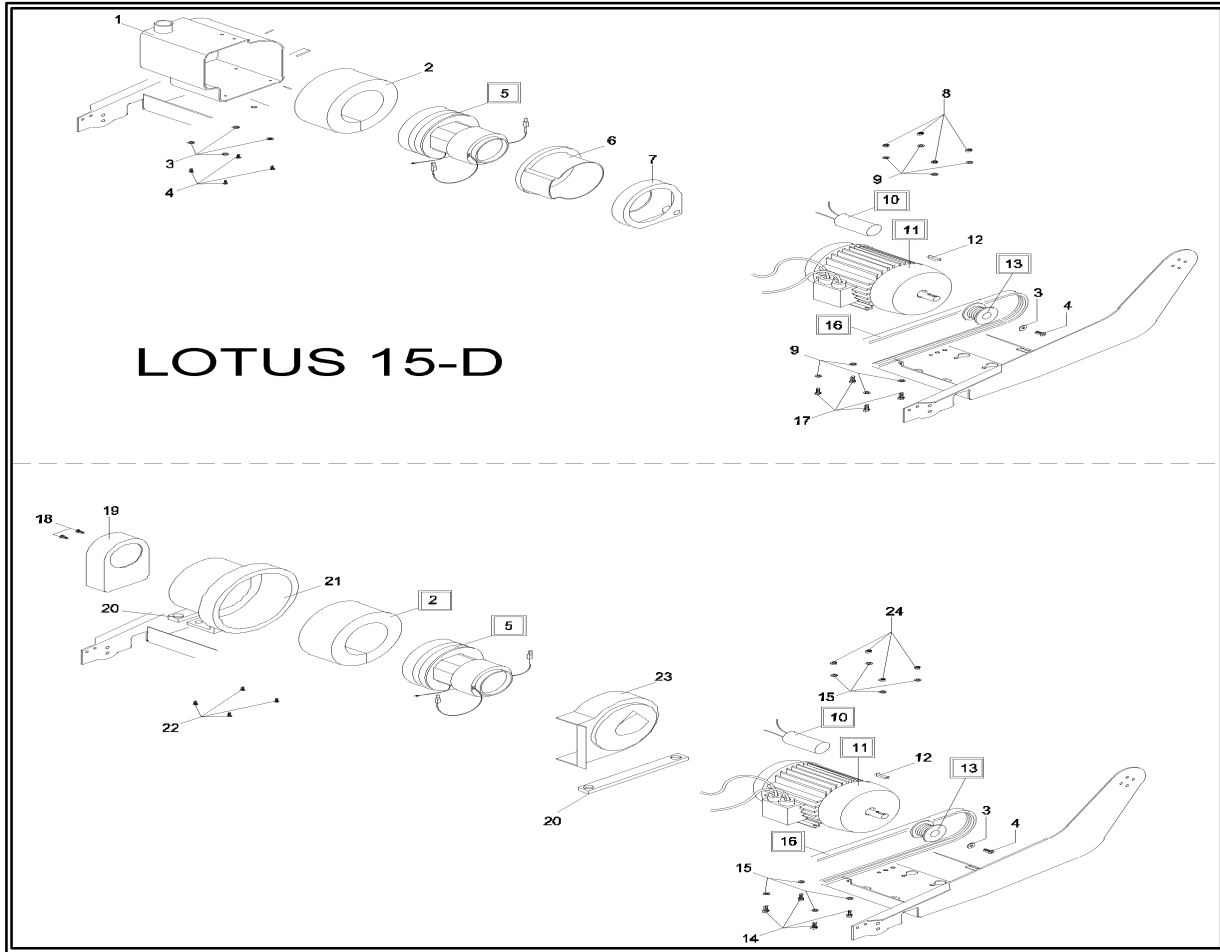


← Back 1 page

LOTUS 15 - BRUSH ASSEMBLY		
POSITION	PART NUMBER	DESCRIPTION
47	1390025	Bearing 6004 2RS
48	22302020	Pulley pin with copper pipe
49	1105784	Screw, iso 7380 5x12
50	25002002	Bumper, L15
50	25002025	Bumper, L20
51	1105768	Outer snap ring, din 471 Ø 7
52	22502030	Wheel, dia. 40x17x 8
53	1320089	Handwheel Ø 25 M6x25
54	21102016	Bushing for the squeegee adj. spring
55	21902004	Right hand articulation lever,
A	23102000	Brush, Ø 100X375 Nylon
A	23102051	Brush, Ø 100X375 Natural brush
A	23102052	Brush, Ø 100X375 Tynex
A	23102053	Brush, Ø 100X490 Nylon
A	23102054	Brush, Ø 100X490 Natural brush
A	23102055	Brush, Ø 100X490 Tynex
B	23102021	Complete brush pin, L15-L20
C1	23102020	Complete driven pulley, L15
C2	23102026	Complete driven pulley, L20
D1	23102069	Copmplete machine lifting rod L15
D2	23102070	Complete machine lifting rod L20



LOTUS 15 - HANDLE & CONTROL PANEL ASSEMBLY



LOTUS 15 - HANDLE & CONTROL PANEL ASSEMBLY

POSITION	PART NUMBER	DESCRIPTION
1	23152005	Suction box, L 15
2	21602010	MAPPYSIL deadening gasket L15
2	21602015	Deadening gasket L20
3	1105807	Washer, uni 6592 4x16
4	1105494	Screw, 4x16 INOX
5	13402000	Suction motor, 230V L15 - L20
5	13402003	Suction motor, 110V L15 - L20
6	21202088	Motor guard
7	21202043	Motor cooling manifold
8	1105123	Nut, uni 5588 M 6
9	1105324	Washer, uni 6593 6x18
10	13802017	Capacitor 16pF L15
10	13802019	Capacitor 20pF L20
11	13402001	Motor,L15 230 V
11	13402002	Motor,L15 110 V
11	13402004	Motor,L20 230 V
11	13402005	Motor,L20 110 V



← Back 1 page

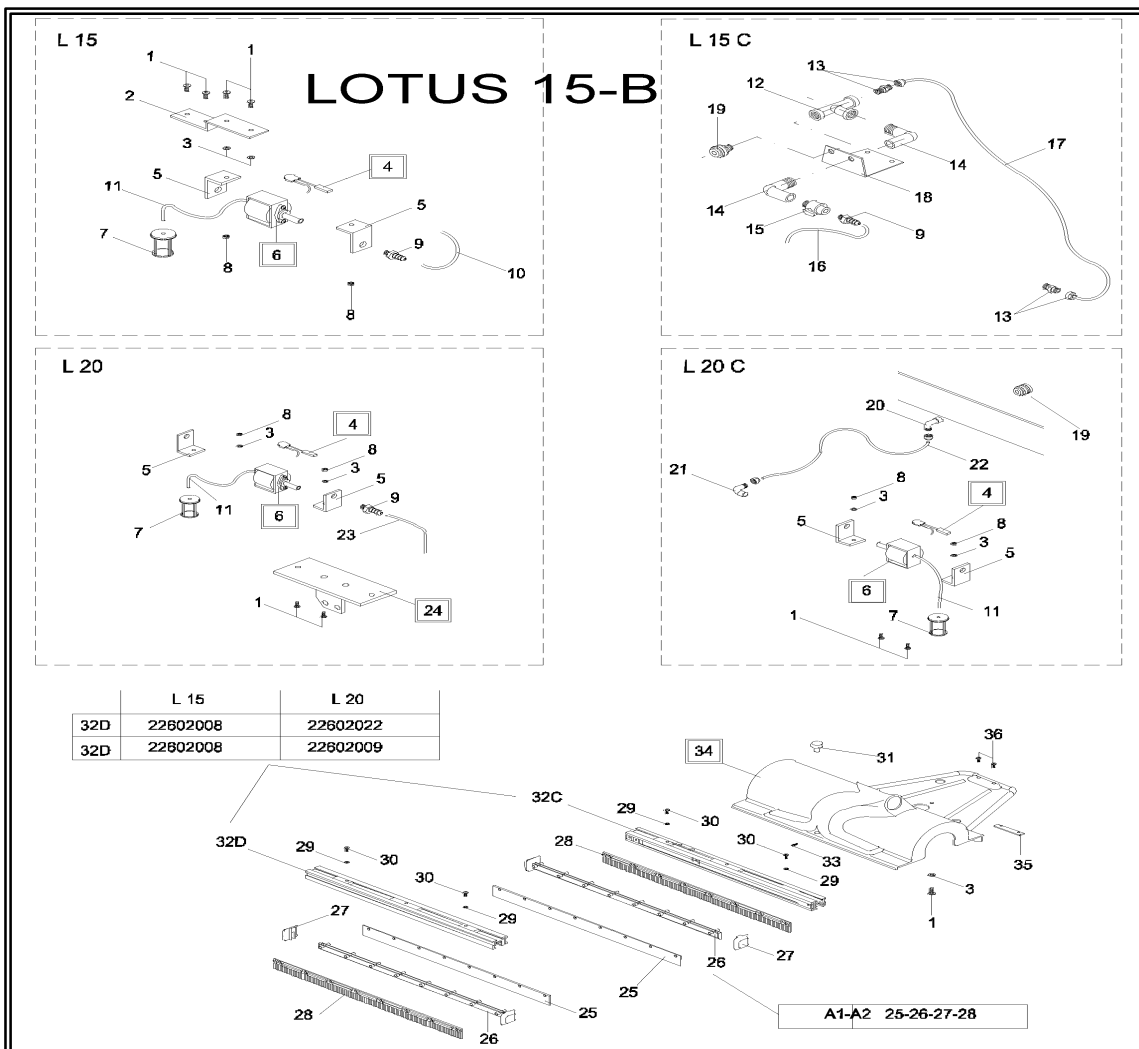
LOTUS 15 - HANDLE & CONTROL PANEL ASSEMBLY

POSITION	PART NUMBER	DESCRIPTION
12	1105465	Key, uni 6604 5x5x10
13	22502021	Drive pulley, L 15
13	22502036	Drive pulley, L 20
14	1105064	Screw, TE 8x30
15	1105326	Washer, uni 6593 8x24
16	13302000	Poly belt, 558 4J L15
16	13302005	Poly belt, 220 5J L20
17	1105779	Screw, uni 5739 6x25
18	1105784	Screw, iso 7380 5x12
19	21202138	Cooling air conveyor
20	22602019	Fixing bracket L20
21	21202136	Suction box, L20
22	1105497	Screw, 5X16 INOX
23	21202137	Suction compartment cover
24	1105134	Lock nut, M 8 din 982



← Back 1 page

LOTUS 15 - PUMP & SQUEEGEE ASSEMBLY



LOTUS 15 - PUMP & SQUEEGEE ASSEMBLY

POSITION	PART NUMBER	DESCRIPTION
1	1105494	Screw, 4x16 INOX
2	22602010	Pump support bracket, L 15
3	1108807	Washer, uni 6593 4x16
4	13802018	Thermal protection for pump 220V
4	13802023	Thermal protection for pump 110V
5	22602017	Pump vibration damping support, L 15-L20
6	14002000	Suction pump, 230V L15-L20
6	14002001	Suction pump, 110V L15-L20
7	25002005	Filter for solution, L 15
8	1105121	Nut, uni 5588 M 4
9	1255003	1/8" hose fitting
10	25002032	Supplementary pipe L 20
11	25002024	Pipe for solution, L15-L20
12	1255010	1/8" FFF union tee



← Back 1 page

LOTUS 15 - PUMP & SQUEEGEE ASSEMBLY

POSITION	PART NUMBER	DESCRIPTION
13	1255009	Straight male pipe fitting, 8x6 1/8"
14	1255007	1/8" MF union elbow
15	1320088	Mini 1/8" ball valve
16	25002009	Water pipe for brush L15
17	25002010	Supplementary pipe L 15
18	22602012	Accessory support bracket, L 15
19	1255025N	1/8" small coupling
20	1255017	1/8"F 6X8 union elbow
21	1255028	1/8" 6X8 union elbow
22	25002023	Supplementary pipe L 20
23	25002022	Water pipe for brush L20
24	22602027	Pump support bracket, L 20
24	22602020	Pump support bracket, L 20 C
25	21602000	Wiper blade, L 15
25	21602030	Wiper blade, L 20
26	22602000	Blade support, L 15
26	22602026	Blade support, L 20
27	22602001	Squeegee cap, L 15
28	21602001	Wiper blade, L 15
28	21602031	Wiper blade, L 20
29	1105330	Washer, uni 6593 4x12
30	1105353	Self tapping screw + uni 6954 3.5 X 19
31	21652001	Guide for the squeegee adjustment spring
32	See dwg	Squeegee pad support
33	1105500	Screw, uni 5931 5x12
34	21202040	Suction shute L15
34	21202135	Suction shute L20
35	22602018	Fixing bracket
36	1105784	Screw, iso 7380 5x12
A1	23102023	Complete KIT squeegee L15
A2	23102024	Complete KIT squeegee L20



← Back 1 page

Eagle Power™ Products Group

Warranty Policy

Limited Warranty

Eagle Power Products (EPP) warrants new cleaning equipment against defects in material and workmanship under normal use and service to the original purchaser as detailed below.

10 Years

Subject to the conditions stated below, EPP warrants polyethylene tanks and housings to be free from defects in materials and workmanship for a period of ten years.

3 Years

Subject to the conditions stated below, EPP warrants all automatic scrubber components to be free from defects in materials and workmanship for a 3-year period. Parts replaced or repaired are warranted for the remainder of the original warranty period.

1 Year

Subject to the conditions stated below, EPP warrants all other cleaning equipment components to be free from defects in materials and workmanship for a 1-year period. Parts replaced or repaired are warranted for the remainder of the original warranty period. Batteries are prorated for one year.

EPP will furnish and charge for replacement parts, including transportation, to the original owner through an EPP authorized service center. If the part is returned within 30 days and is found defective, the owner will be credited for the cost of the replacement part including shipping and handling.

Labor charges are covered for one year from the date of purchase if provided by an authorized EPP service center. Travel is covered for 90 days for battery operated equipment only.

Wear items exempt from warranty include belts, carbon brushes, power cords, wheels, pad drivers, clutch plates, brushes, pads, handle grips, filters, screens, throttle cables, and squeegees.

This warranty shall not apply to failures caused by misuse or abuse, improper maintenance as stated in the operation manuals, use of unauthorized repair parts, repairs by other than an EPP authorized service center, and damage in transit.

EPP disclaims and denies any liability for any direct, indirect, special incidental or consequential damage which may be suffered as a result of sale, delivery, servicing, use, loss of any product, downtime, labor, freight, or other charges not expressly included herein.

Date Purchased: _____

Serial Number: _____

Serial Number: _____

Please be sure to record this information. This information will be necessary for future warranty claims.



Eagle Power Products Sales and Service Provided by:

1174 Northland Drive - Mendota Heights, MN 55120
651.686.5399 Fax 651.686.5695
www.eaglepower.com