



Electronic Service Manuals

This electronic document is provided as a service to our customers. We do not create the contents of the information contained in this document. Should you have detailed questions pertaining to the information contained in this document, you may contact Michco, or the manufacturer which provided the original information in this electronic deliverable. Michco's only part in this electronic deliverable was the electronic assembly process. By providing this manual on line we are not guaranteeing parts availability.

You may contact Michco through the following methods:

Phone (517) 484-9312 or (800) 331-3339

2011 N. High St. -- Lansing, Michigan -- 48906

Fax: (517) 484-9836

Email: CustServe@Michco.com

Web site: www.Michco.Com

Parts Web site: www.FloorMachineParts.Com

Order Parts on Line at:

www.FloorMachineParts.Com

Directly to Parts & Service:

By Email: **Shop@Michco.com**

By Fax: (517) 702-2041

By Voice: Use numbers above.

Serving the Cleaning Industry Since 1922

Notice: All copyrighted material remains property of original owners, all trademarks are property of respective owners. Manuals are subject to Manufacturer's reproduction limitations. Originals or reproductions were provided by manufacturers through a request. We make no warranty as to the correctness of information provided in this document and you assume all risk. By placing these manuals on line we are not declaring our corporation to be an manufacturer authorized dealer or provider, please check our web site for authorized manufacturers we represent.

FLOOD SUCKER

REFERENCE MANUAL

Operating Instructions • Parts List • Troubleshooting

Machine Serial Number _____



Castex Industries, Inc., 4240 Blue Star Hwy., Holland, Michigan 49423
616- 392-6966

**WARNING: TO AVOID ELECTRICAL SHOCK, DO
NOT EXPOSE TO RAIN. STORE INDOORS.**

GENERAL SERVICE POLICY:

When service is required on the machine, there are some important items that should be known by either your distributor or the factory.

Whenever ordering parts or requesting any type of service, specify (a) the model of machine you have, (b) the serial number of the machine.

Whenever returning any parts to the factory, call Castex for a return authorization number and always enclose a note indicating the above plus what exactly is wrong with the returned part, your name and address.

Always order parts by part number and description. Prices on all parts are subject to change without notice.

CASTEX FLOOD SUCKER

PURPOSE: The FLOOD SUCKER is designed to continuously suck up and discharge large volumes of water.

SETUP

1. Plug power cords into two separate circuits.
2. Connect the 15 foot 1½" vacuum hose and wand to hose barb #3.
3. Connect the 25 foot 1½" vacuum hose to hose barb #14; place the other end outside or to any drain that will handle a large volume of water.

NOTE: There are two electrical power cords. The outside cord (#24) is for the vacuum and will draw 11 amps. The inside cord (#25) is for the special discharge pump and will draw 10 amps. Once they are plugged into separate circuits, the switch (#21) must be turned on to activate the vacuum system.

HOW IT WORKS:

A vacuum is created in tank #2 when switch #21 is activated. Water is drawn up through the wand and hose into the tank through hose barb #3. When the water level in the tank reaches a certain height the pump switch #4 *automatically* turns the discharge pump on and water is discharged out through hose barb #14. When the job is completed, open drain valve #15 and drain out remaining water.

The *Intake Hose* can be as long as 100 feet but will be less effective in lengths exceeding 25 feet. The *Discharge Hose* can be any length, but it is recommended that a height of 14 feet not be exceeded.

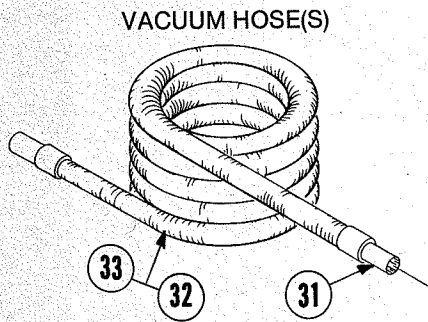
MAINTENANCE:

Access to the recovery tank is through lid #20. Insure that both the tank and the screen #19 stay clean. You can tell if the discharge pump is working by lifting float #4 when the #25 cord is plugged in. Access to the pump is through lid #26.

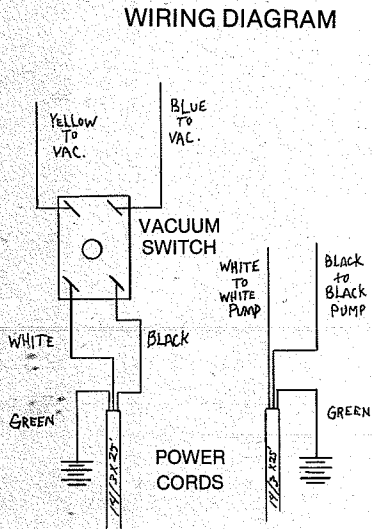
PRIMING:

Occasionally an airlock will develop between the pump intake on the bottom of the pump and the check valve #7. To prime it, suck about five gallons of water into the unit. Then take the vacuum hose and connect it to hose barb #3. Turn on the vacuum and put the other end to the hose barb #14 for a couple of seconds. This will suck the water through the discharge pump system and eliminate the air lock.

If you have further questions or problems, call CASTEX or your distributor.

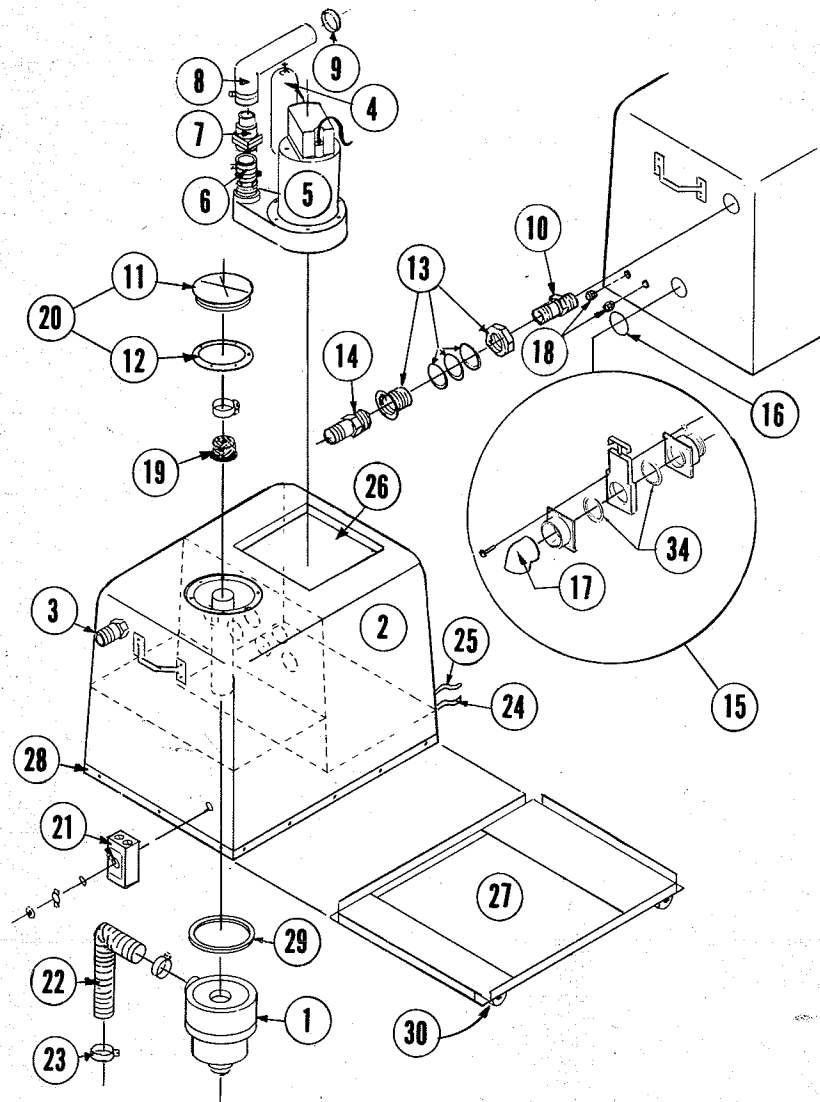


VACUUM HOSE(S)



WIRING DIAGRAM

ALL GREEN GROUND TO FRAME



FLOOD SUCKER Parts & Service Sheet

CODE	PART NO.	DESCRIPTION	CODE	PART NO.	DESCRIPTION
1	10504	Vacuum/Blower	18	10623	Electric Cord Grip (Vacuum)
2	MC 0700-6	Complete Fiberglass Cabinet	19	10108	Stand Pipe Screen
3	10101	Hose Barb 1 1/2"	20	10105	Screw on Lid & Outer Ring
4	20720	Float — switch	21	10613	Switch
5	10481	Pump	22	10502	Exhaust Hose
6	10101	Hose Barb - 1 1/2"	23	10503	Clamp No. 28
7	10482	Check Valve 1 1/2"	24	10604	Power Cord 14 ga.
8	10238	Hose Gates Formed	25	10603	Power Cord 14 ga.
9	10503	Clamp	26	10484	Smoked Glass Cover
10	10101	Hose Barb 1 1/2"	27	10215	Frame with Casters
11	10106	Clear Lid Only	28	10123	Bumper
12	10107	Clear Lid Outer Ring Only	29	10501	Vacuum/Blower Gasket
13	10119	Haywood Flange, Complete	30	10201	Caster, 3" Heavy Duty
14	10101	Hose Barb 1 1/2"	31	10513	Hose Cuff, 1 1/2 x 1 1/2
15	10112	Drain Valve, Complete	32	10514	Vacuum Hose, 15', 1 1/2", Complete
16	10111	Drain Valve Gasket	33	10515	Vacuum Hose, 25', 1 1/2", Complete
17	10113	Drain Valve Down Spout	34	10117	Drain Valve Gate Seal

