



## Electronic Service Manuals

This electronic document is provided as a service to our customers. We do not create the contents of the information contained in this document. Should you have detailed questions pertaining to the information contained in this document, you may contact Michco, or the manufacturer which provided the original information in this electronic deliverable. Michco's only part in this electronic deliverable was the electronic assembly process. By providing this manual on line we are not guaranteeing parts availability.

You may contact Michco through the following methods:

Phone (517) 484-9312 or (800) 331-3339

2011 N. High St. -- Lansing, Michigan -- 48906

Fax: (517) 484-9836

Email: [CustServe@Michco.com](mailto:CustServe@Michco.com)

Web site: [www.Michco.Com](http://www.Michco.Com)

Parts Web site: [www.FloorMachineParts.Com](http://www.FloorMachineParts.Com)

Order Parts on Line at:

**[www.FloorMachineParts.Com](http://www.FloorMachineParts.Com)**

Directly to Parts & Service:

By Email: **[Shop@Michco.com](mailto:Shop@Michco.com)**

By Fax: (517) 702-2041

By Voice: Use numbers above.

**Serving the Cleaning Industry Since 1922**

Notice: All copyrighted material remains property of original owners, all trademarks are property of respective owners. Manuals are subject to Manufacturer's reproduction limitations. Originals or reproductions were provided by manufacturers through a request. We make no warranty as to the correctness of information provided in this document and you assume all risk. By placing these manuals on line we are not declaring our corporation to be an manufacturer authorized dealer or provider, please check our web site for authorized manufacturers we represent.

# FABRIMATIC

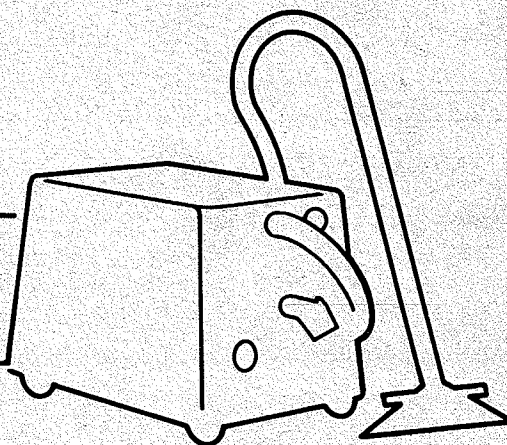
MODEL NUMBER: CU 700

## REFERENCE MANUAL

Operating Instructions • Parts List • Troubleshooting

Machine Serial Number \_\_\_\_\_

# Castex



Castex Industries, Inc., 4240 Blue Star Hwy., Holland, Michigan 49423  
616- 392-6966

**WARNING: TO AVOID ELECTRICAL SHOCK, DO NOT EXPOSE TO RAIN. STORE INDOORS.**

**Use only CASTEX chemicals, others could harm the machine.**

## SET UP AND OPERATION:

*(Numbers refer to the drawings on page 2 and to the parts diagram on page 4)*

1. Mix hot water and Castex Cleaning Agent in the proper proportions to fill the 7 gallon clean water tank with solution. Always mix powder chemicals in a filling bucket—**DO NOT MIX POWDER CHEMICALS IN THE MACHINE!**

### **WARNING:**

Use a clean bucket to fill the machine. Empty dirty water into *another* bucket. Always be certain to use **SEPARATE BUCKETS** to fill and to empty machine. Perfectly clean water must be in the clean water tank to avoid fouling the internal system.

It is suggested that you use hot water to shorten the waiting time necessary for the heater to warm the water.

2. Be certain the drain valve at the front of the machine #25 is shut and then plug the machine into **TWO SEPARATE 15 AMP CIRCUITS**.

### **WARNING:**

**DO NOT OPERATE THE MACHINE WITHOUT A GROUND PIN!** The third prong on the plug is necessary to avoid an electrical hazard.

3. Turn on the water heater switch at #28. Be certain that the water level covers the heating element #44 inside the solution tank at all times.
4. Connect the vacuum hose to the machine at #19 and to the hand tool.
5. Connect the twin solution hoses #10A to the machine by pushing back the quick connector plug #11A collars on the machine and inserting the quick connector #12A. Release the collar and let it slide back to hold the quick connector securely. The two hoses are interchangeable and need not go into the machine in any order. The solution hose #10B goes into the recirculating manifold #13. Plug the recirculating manifold quick connector #12B into the hand tool at either #53 or #54.
6. When the indicator light #29 goes out, the water is at the proper temperature. (Water temperature is factory set at 175-180°F.) The water heater can be left "on" to keep water temperature constant. The solution pump will not drain the solution tank below the heating element #44.
7. In sequence, turn on the solution pump switch and then the vacuum switch.

### **WARNING:**

**ALWAYS TEST THE UPHOLSTERY FABRIC.** Test for potential color bleed and shrinkage in an area that will not show.

8. To operate, squeeze the hand tool solution control lever #55 or #56 while drawing the hand tool across the upholstery with the opening held steadily against the material.
9. As the machine is used, dirty solution will begin to fill the recovery tank. When the tank is full, a float will shut off the flow of air to the vacuum motor at #17 which will stop the vacuum function. The vacuum motor will continue to run but there will be no suction at the hand tool. Turn the machine off immediately.

### **WARNING:**

Excessive foaming will **NOT** cause this float to shut down the vacuum. Use Castex Anti-Foam to control foaming and to protect the vacuum motor. Damage due to foam is not covered under warranty.

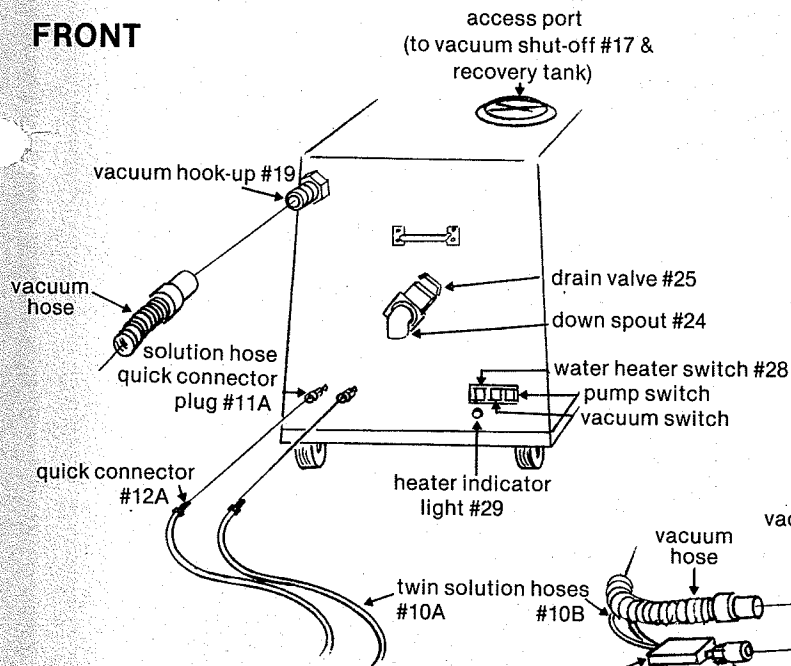
10. To empty the recovery tank, turn the machine off and then position the discharge bucket under the drain valve down spout #24. Pull the drain T-handle #25 to empty the dirty water. Be certain this valve is closed before continuing operation. To avoid overfilling the recovery tank, empty the recovery tank every time you fill the clean water tank—be certain to use separate buckets!
11. Keep the standpipe screen #17 and the clean water filter #45 clean. Unscrew and rinse to clean the clean water filter. With the machine shut off, lift the vacuum shutoff lid #17 and wipe debris out of the standpipe screen.

**DO NOT USE DRY CLEANING SOLUTIONS IN THIS MACHINE!**

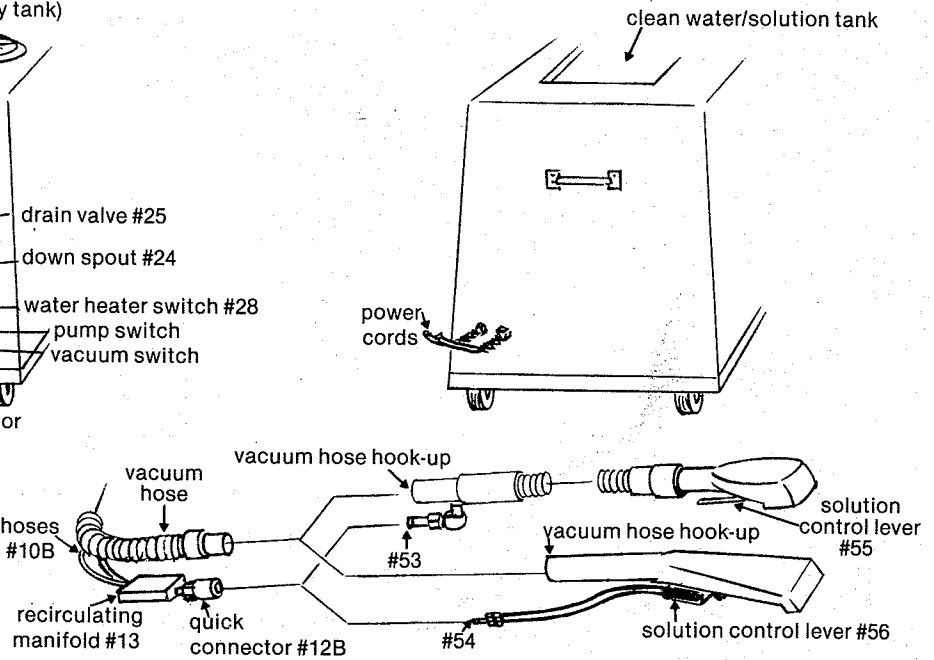
## WHEN FINISHED:

1. Turn off all switches.
2. Drain the recovery tank by opening the drain #25 and catching the dirty solution in a bucket. Clean the drain valve seat by turning on the vacuum, putting one hand over the vacuum hose intake #19 and one hand over the drain #24 and slowly lifting the hand on the drain. Do this 2-3 times. This will significantly extend the life of the drain valve seat. Close the valve.
3. Vacuum unused solution from the clean water tank into the recovery tank.
4. Drain and rinse the recovery tank and clean both filters #17 and #45. Once again, dry the drain valve seat as described above.
5. Disconnect the solution and the vacuum hoses from the hand tool and from the machine.
6. Drain the hand tool by turning it upside down and pulling the trigger.

## FRONT



## BACK



## TO CHANGE WATER TEMPERATURE

1. Underneath machine locate the control box #37 for the heating element. (The box is labeled "Dayton.")
2. To remove the box cover, squeeze the sides while lifting out.
3. Reset the two controls to the desired temperatures. The Brass control regulates the lower level temperature at which you wish the heater to turn "on." The Silver control regulates the upper level at which you wish the water heater to turn "off." It is suggested that the "on" and "off" temperatures be within 10 degrees of each other.
3. Thoroughly rinse the recovery tank with a hose through the access port after every use.
4. Polish the fiberglass case with car wax approximately once a month to keep your image clean.
5. It is suggested that you maintain a filter at the vacuum hose intake #19. The filter is actually a ladies knee-high nylon stocking. The band at the top of the stocking fits around the vacuum intake nozzle and the toe of the stocking trails into the recovery tank. The vacuum hose fits right over the nylon's band to hold it all in place. As the machine is used, any large debris pulled up into the vacuum system is caught in the nylon stocking. To change the stocking, turn the machine off, support the full nylon stocking in the recovery tank with your hand and remove the stocking band from the vacuum intake through the access port on top of the machine. A stocking can be rinsed and reused as long as it develops no holes.

## SUGGESTED MAINTENANCE:

1. Keep both filters and screens clean (#17 and #45).
2. Every forty (40) hours of operation run Brown-Ex through the pumps and tanks. Pour approximately 2 cups of Brown-Ex into the clean water tank. Turn on solution pump and let Brown-Ex run through and sit in the system overnight in above freezing temperatures. This dissolves the normal alkaline accumulations in the system.

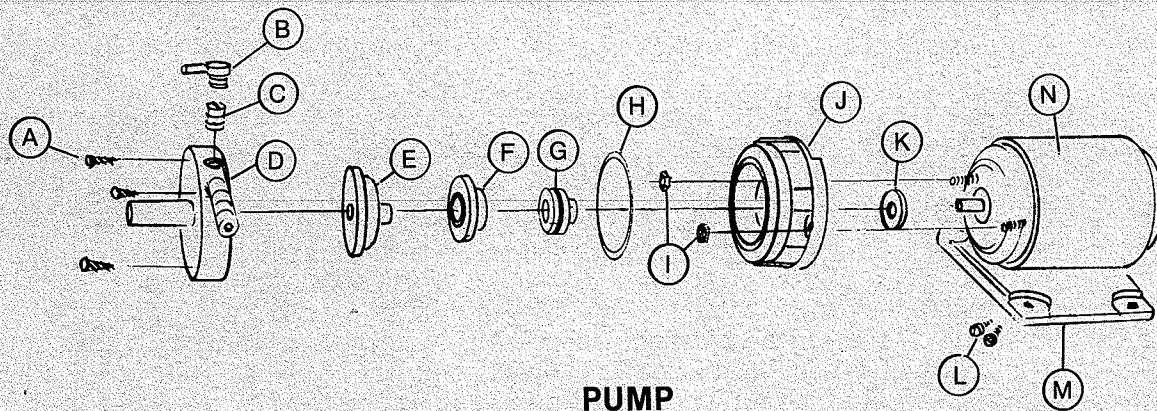
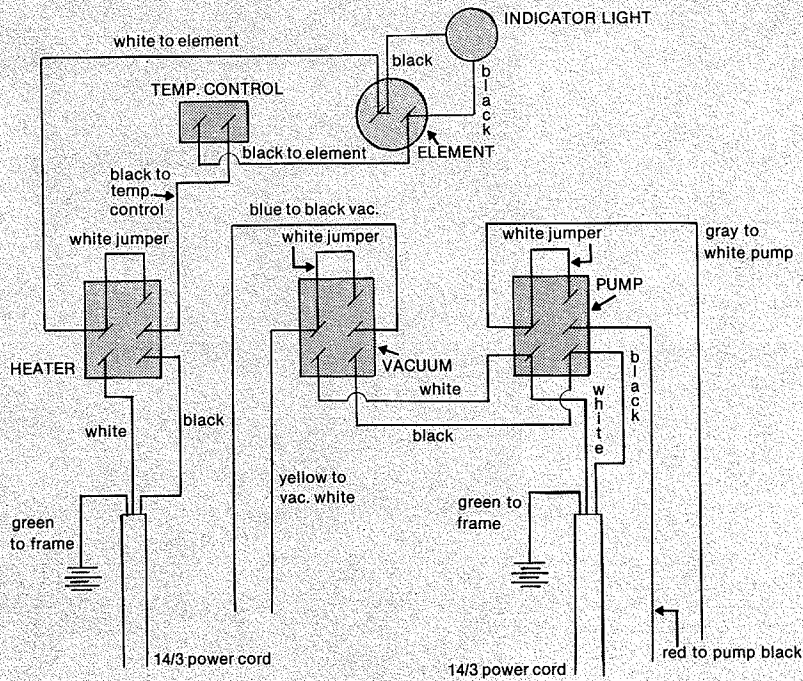
## GENERAL SERVICE POLICY:

Whenever ordering parts or requesting any type of service, specify:

- a) the model of the machine
- b) the serial number of the machine
- c) the tool you are using

All parts returned to the factory must arrive prepaid with a return authorization number. Always enclose a note indicating the above plus what exactly is wrong with the returned part, your name and your address. Always order parts by part number and description.

# ELECTRICAL DIAGRAM



**PUMP**

## PUMP PARTS

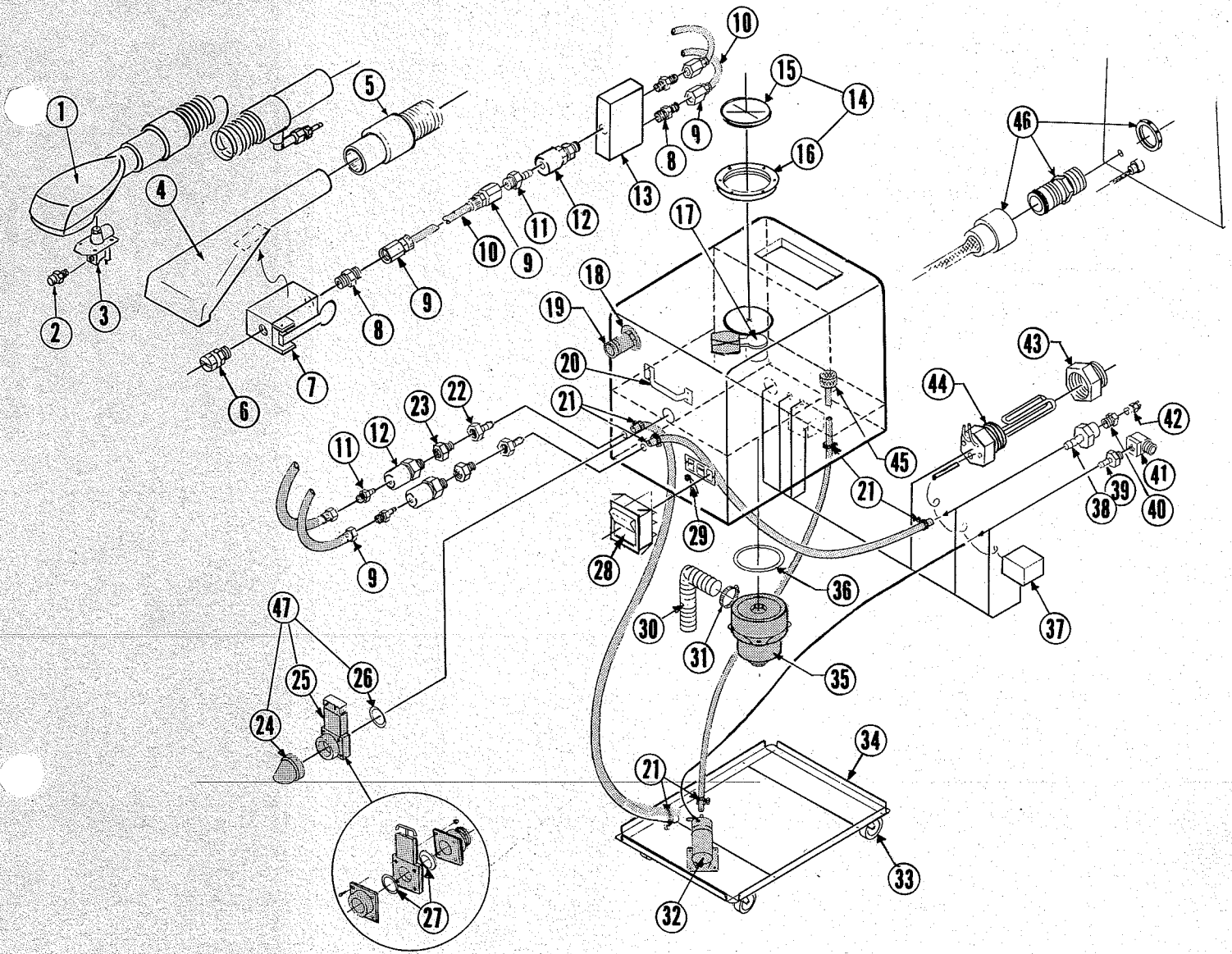
- |                |           |
|----------------|-----------|
| A screw        | H O-ring  |
| B vent fitting | I nut     |
| C pipe plug    | J adapter |
| D body         | K slinger |
| E impeller     | L screw   |
| F seal head    | M base    |
| G seal seat    | N motor   |

CODE #	PART #	DESCRIPTION
48	11336	complete pump kit less motor (includes parts A-K)
49	11339	impeller kit (includes parts E, F, H)
50	A7888	brush assembly kit
51	11338	adapter kit (includes parts A, G-K)
52	11337	body kit (includes parts A-D, H)

## PARTS CHART

## PUMP PARTS

CODE #	PART #	DESCRIPTION
1	10485C	Castex upholstery tool, complete
2	10443	spray tip, LP
3	10486	upholstery tool valve kit
4	10455	crevice tool
5	10514	vacuum hose, 15' x 1 1/2, complete
6	10458	V-jet tip #5002
7	10487	valve, crevice tool
8	10497	hex nipple, 1/8
9	10766	hose barb, 1/8 FP x 1/8 H
10	17037	clear braided hose, 1/8
11	10473	quick coupler plug, 1/8
12	10332	quick coupler, 1/8
13	10791	recirculating mixing manifold
14	10105	lid and outer ring, complete
15	10106	clear lid only
16	10107	outer ring only



CODE #	PART #	DESCRIPTION
17	10505	automatic vacuum shutoff
18	10119	hayward flange complete
19	10101	nylon hose barb, 1 1/2"
20	10102	handle
21	10212	clamp, worm, #4
22	10314	hose barb, 1/4 FP x 3/8 H
23	10765	bushing, 1/4 x 1/8
24	10113	down spout
25	10112	drain valve
26	10111	drain valve gasket
27	10117	gate seal
28	10612	lighted rocker switch
29	10622	indicator light
30	10502	vacuum exhaust hose
31	10503	clamp, #28
32	10300	pump
33	10201	caster, 3"
34	10215	frame
35	10504	vacuum/blower

CODE #	PART #	DESCRIPTION
36	10501	vacuum/blower gasket
37	10671	heater element control
38	10314	hose barb, 1/4 FP x 3/8 H
39	10734	hose barb, 1/4 MP x 1/4 H
40	10765	bushing, 1/4 x 1/8
41	10732	street elbow, 1/4, 90°
42	10456	V-jet tip #9502
43	10479	bushing, 1 1/2 x 1 1/4
44	17060G	heater element
45	10110	clean water tank filter
46	10623	cord grip
47	10114	drain valve, gasket & down spout complete
48	11336	complete pump kit less motor
49	11339	pump impeller kit
50	A7888	pump brush assembly kit
51	11338	pump adapter kit
52	11337	pump body kit

## TROUBLESHOOTING

PROBLEM	CAUSE	SOLUTION
Uneven or no spray from hand tool	1. Dirty or plugged spray tip	1. Clean or replace tip
	2. Improper size tip or improper degree of spray angle	2. Replace with proper tip
	3. Worn spray tip	3. Replace spray tip
Leaking hand tool	1. Quick coupler on hand tool #11 defective	1. Replace quick coupler
	2. Hand tool valve #7 or #3 leaking	2. Install valve rebuild kit
	3. Hose split or fittings loose	3. Replace hose and tighten fittings
	4. Quick coupler and plug not fully engaged	4. Reinsert quick coupler
	5. Valve stem worn	5. Replace valve
Loss of vacuum	1. Drain valve #25 open	1. Close drain valve
	2. Recovery tank full closing vacuum safety shutoff #17	2. Drain recovery tank
	3. Lint on top of stand pipe #17	3. Remove lint trap lid and clean screen
	4. Kinks in vacuum hose	4. Straighten hose
	5. Holes in vacuum hose	5. Replace hose
	6. Excess foam in vacuum recovery tank	6. Use Anti-Foam in discharge tank
	7. Bad vacuum motor	7. Replace motor
	8. Lint trap lid #17 on top of stand pipe won't seal	8. Replace lid
	9. Blades let loose in vacuum motor cage — caused by water going through vacuum	9. Replace vacuum motor
Drain valve leaks	1. Drain valve gasket #26 worn	1. Replace gaskets
	2. Lint or dirt in drain valve #25	2. Remove and clean, may need to replace

## TROUBLESHOOTING CAUSE

PROBLEM	TROUBLESHOOTING CAUSE	SOLUTION
Solution pump will not run	<ol style="list-style-type: none"> <li>1. Fuse blown or circuit breaker popped in building (there are no circuit breakers in machine)</li> <li>2. Faulty on/off switch #29</li> <li>3. Loose wiring</li> <li>4. Solution pump motor faulty</li> </ol>	<ol style="list-style-type: none"> <li>1. Replace fuse or reset breaker</li> <li>2. Replace switch</li> <li>3. Trace and repair</li> <li>4. Replace solution pump</li> </ol>
Solution pump runs but no solution comes out of spray nozzles	<ol style="list-style-type: none"> <li>1. Spray tip plugged</li> <li>2. Screen #45 in bottom of clean water tank plugged</li> <li>3. Pump impeller defective</li> <li>4. Quick couplers not attached properly</li> <li>5. Faulty quick coupler</li> </ol>	<ol style="list-style-type: none"> <li>1. Remove and clean</li> <li>2. Remove and clean</li> <li>3. Replace with impeller kit #49</li> <li>4. Separate quick couplers and rejoin</li> <li>5. Replace quick coupler</li> </ol>
Solution pump leaks	<ol style="list-style-type: none"> <li>1. Faulty seal in solution pump</li> <li>2. Faulty pump</li> </ol>	<ol style="list-style-type: none"> <li>1. Replace pump seals</li> <li>2. Replace pump</li> </ol>
Water doesn't get hot	<ol style="list-style-type: none"> <li>1. Fuse blown or circuit breaker popped in building (there are no circuit breakers in the machine)</li> <li>2. Heater switch not "on"</li> <li>3. Heater switch faulty</li> <li>4. Heating element faulty</li> <li>5. Heater temperature control #37 faulty</li> </ol>	<ol style="list-style-type: none"> <li>1. Replace fuse or reset breaker</li> <li>2. Turn on heater switch at #28</li> <li>3. Replace heater switch</li> <li>4. Replace heating element</li> <li>5. Replace heater temperature control</li> </ol>

