



Electronic Service Manuals

This electronic document is provided as a service to our customers. We do not create the contents of the information contained in this document. Should you have detailed questions pertaining to the information contained in this document, you may contact Michco, or the manufacturer which provided the original information in this electronic deliverable. Michco's only part in this electronic deliverable was the electronic assembly process. By providing this manual on line we are not guaranteeing parts availability.

You may contact Michco through the following methods:

Phone (517) 484-9312 or (800) 331-3339

2011 N. High St. -- Lansing, Michigan -- 48906

Fax: (517) 484-9836

Email: CustServe@Michco.com

Web site: www.Michco.Com

Parts Web site: www.FloorMachineParts.Com

Order Parts on Line at:

www.FloorMachineParts.Com

Directly to Parts & Service:

By Email: **Shop@Michco.com**

By Fax: (517) 702-2041

By Voice: Use numbers above.

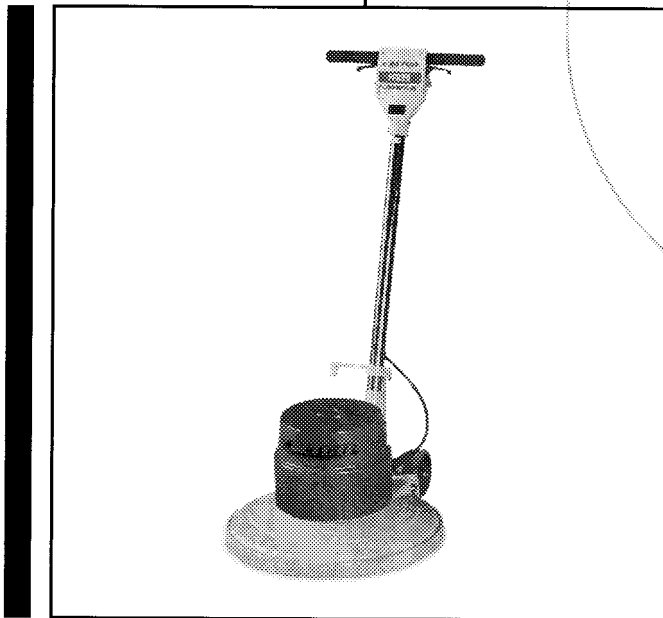
Serving the Cleaning Industry Since 1922

Notice: All copyrighted material remains property of original owners, all trademarks are property of respective owners. Manuals are subject to Manufacturer's reproduction limitations. Originals or reproductions were provided by manufacturers through a request. We make no warranty as to the correctness of information provided in this document and you assume all risk. By placing these manuals on line we are not declaring our corporation to be an manufacturer authorized dealer or provider, please check our web site for authorized manufacturers we represent.

FFM20 20" Foreman Floor Machine

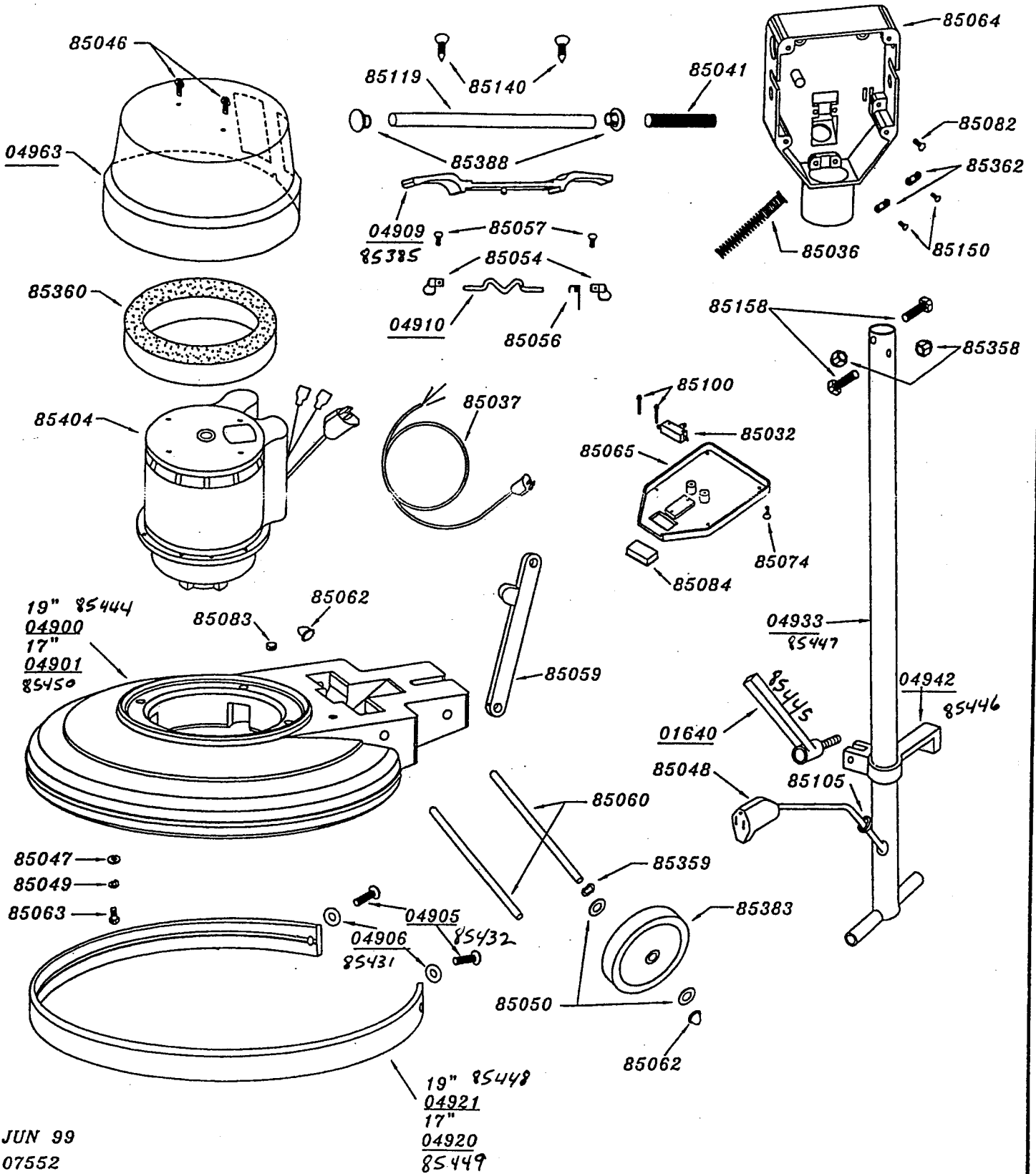
Parts Schematic

Item #85021



Better Resources. Better Results.
BETCO[®]

BETCO BETCO TX HD 19"/17" LA 19993/
19992



ITEM	DESCRIPTION	QTY	ITEM	DESCRIPTION	QTY
01640	LOCKING HANDLE <i>85445</i>	1	85060	AXLE SHAFT PLATED	2
04900	CHASSIS-POLY 19" <i>85444</i>	1	85062	AXLE END CAPS	4
04901	CHASSIS-POLY 17" <i>85450</i>	1	85063	5/16-18 X 1 1/2 HHMS	4
04905	1/4-20 X 3/4 PHS <i>85432</i>	2	85064	SWITCH BOX PAINTED	1
04906	1/4" LG DIA. WASHER <i>85431</i>	2	85065	SWITCH BOX COVER PAINT	1
04909	TRIGGER TX <i>85385</i>	1	85074	#6-32 X 3/8 PHS - COVER	4
04910	LEVER SAFETY SWITCH	1	85082	#8-32 X 1/4 PHS	1
04920	BUMPER 17" <i>85449</i>	1	85083	PLUG	1
04921	BUMPER 19" <i>85448</i>	1	85084	SWITCH INSERT	1
04933	HANDLE TUBE LA PLATED <i>85447</i>	1	85100	#6-32 X 7/8 PHS	2
04942	CORD HOOK CLAMP LA PTD <i>85446</i>	1	85105	GROMMET 3/8"	1
04963	MOTOR COVER-TX RED HD	1	85119	HANDLE TUBE	1
85032	MICRO SW 1 1/2 HP	1	85140	#14-1 1/2 TYPE A SCREW	2
85036	ANTI-KINK SPRING	1	85150	8-32 X 1/2 TAPTITE PHILLIPS	4
85037	CORD ASSEMBLY 14/3 X 50'	1	85158	1/4-20 X 3/4 HHMS	2
85041	HANDLE GRIP FOAM	2	85358	1/4-20 NYLOC NUT	2
85046	#10-24 X 1/2 PHS	2	85359	1/2 TENSION WASHER TW8	2
85047	5/16 FLAT WASHER	4	85360	SHROUD FILTER SM WET	1
85048	PIGTAIL FEMALE 42 IN.	1	85362	CORD GRIP	2
85049	5/16 SPRING LOCKWASHER	4	85383	WHEEL 5in. FLOOR MACHINE	2
85050	1/2 IN. NYLON WASHER	4	85388	HANDLE TUBE PLUG	2
85054	KNOB SAFETY SWITCH	2	85404	MOTOR 1-1/2 HP - SS HD	1
85056	SPRING SAFETY SWITCH	1			
85057	#6-32 X 1/4 PHS	2			
85059	HANDLE BRACE PAINTED	1			

ITEM	DESCRIPTION	QTY	ITEM	DESCRIPTION	QTY
01640	LOCKING HANDLE 85445	1	85060	AXLE SHAFT PLATED	2
04900	CHASSIS-POLY 19" 85444	1	85062	AXLE END CAPS	4
04901	CHASSIS-POLY 17" 85450	1	85063	5/16-18 X 1 1/2 HHMS	4
04905	1/4-20 X 3/4 PHS 85432	2	85064	SWITCH BOX PAINTED	1
04906	1/4" LG DIA. WASHER 85431	2	85065	SWITCH BOX COVER PAINT	1
04909	TRIGGER TX 85385	1	85074	#6-32 X 3/8 FHS - COVER	4
04910	LEVER SAFETY SWITCH	1	85082	#8-32 X 1/4 PHS	1
04920	BUMPER 17" 85449	1	85083	PLUG	1
04921	BUMPER 19" 85448	1	85084	SWITCH INSERT	1
04933	HANDLE TUBE LA PLATED 85447	1	85100	#6-32 X 7/8 PHS	2
04942	CORD HOOK CLAMP LA PTD 85446	1	85105	GROMMET 3/8"	1
04963	MOTOR COVER-TX RED HD	1	85119	HANDLE TUBE	1
85032	MICRO SW 1 1/2 HP	1	85140	#14-1 1/2 TYPE A SCREW	2
85036	ANTI-KINK SPRING	1	85150	8-32 X 1/2 TAPTITE PHILLIPS	4
85037	CORD ASSEMBLY 14/3 X 50'	1	85158	1/4-20 X 3/4 HHMS	2
85041	HANDLE GRIP FOAM	2	85358	1/4-20 NYLOC NUT	2
85046	#10-24 X 1/2 PHS	2	85359	1/2 TENSION WASHER TW8	2
85047	5/16 FLAT WASHER	4	85360	SHROUD FILTER SM WET	1
85048	PIGTAIL FEMALE 42 IN.	1	85362	CORD GRIP	2
85049	5/16 SPRING LOCKWASHER	4	85383	WHEEL 5in. FLOOR MACHINE	2
85050	1/2 IN. NYLON WASHER	4	85388	HANDLE TUBE PLUG	2
85054	KNOB SAFETY SWITCH	2	85404	MOTOR 1-1/2 HP - SS HD	1
85056	SPRING SAFETY SWITCH	1			
85057	#6-32 X 1/4 PHS	2			
85059	HANDLE BRACE PAINTED	1			