



## Electronic Service Manuals

This electronic document is provided as a service to our customers. We do not create the contents of the information contained in this document. Should you have detailed questions pertaining to the information contained in this document, you may contact Michco, or the manufacturer which provided the original information in this electronic deliverable. Michco's only part in this electronic deliverable was the electronic assembly process. By providing this manual on line we are not guaranteeing parts availability.

You may contact Michco through the following methods:

Phone (517) 484-9312 or (800) 331-3339

2011 N. High St. -- Lansing, Michigan -- 48906

Fax: (517) 484-9836

Email: [CustServe@Michco.com](mailto:CustServe@Michco.com)

Web site: [www.Michco.Com](http://www.Michco.Com)

Parts Web site: [www.FloorMachineParts.Com](http://www.FloorMachineParts.Com)

Order Parts on Line at:

**[www.FloorMachineParts.Com](http://www.FloorMachineParts.Com)**

Directly to Parts & Service:

By Email: **[Shop@Michco.com](mailto:Shop@Michco.com)**

By Fax: (517) 702-2041

By Voice: Use numbers above.

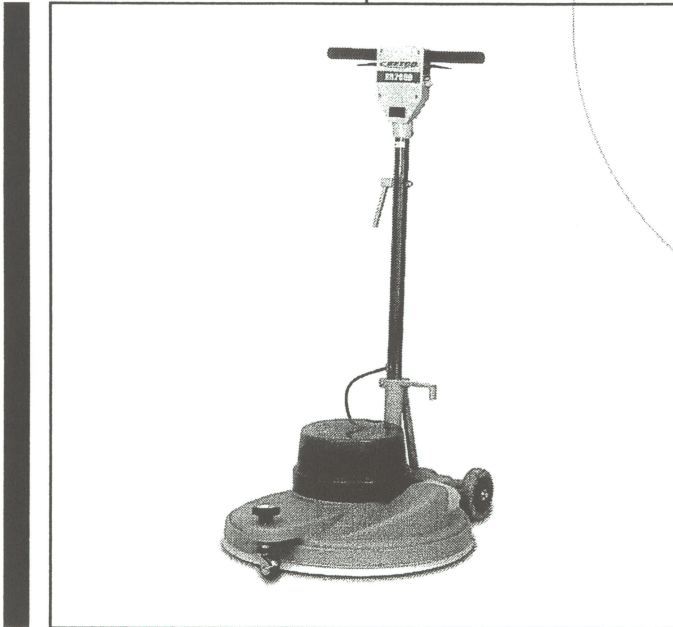
**Serving the Cleaning Industry Since 1922**

Notice: All copyrighted material remains property of original owners, all trademarks are property of respective owners. Manuals are subject to Manufacturer's reproduction limitations. Originals or reproductions were provided by manufacturers through a request. We make no warranty as to the correctness of information provided in this document and you assume all risk. By placing these manuals on line we are not declaring our corporation to be an manufacturer authorized dealer or provider, please check our web site for authorized manufacturers we represent.

# BR2000 20" 2000 RPM Burnisher

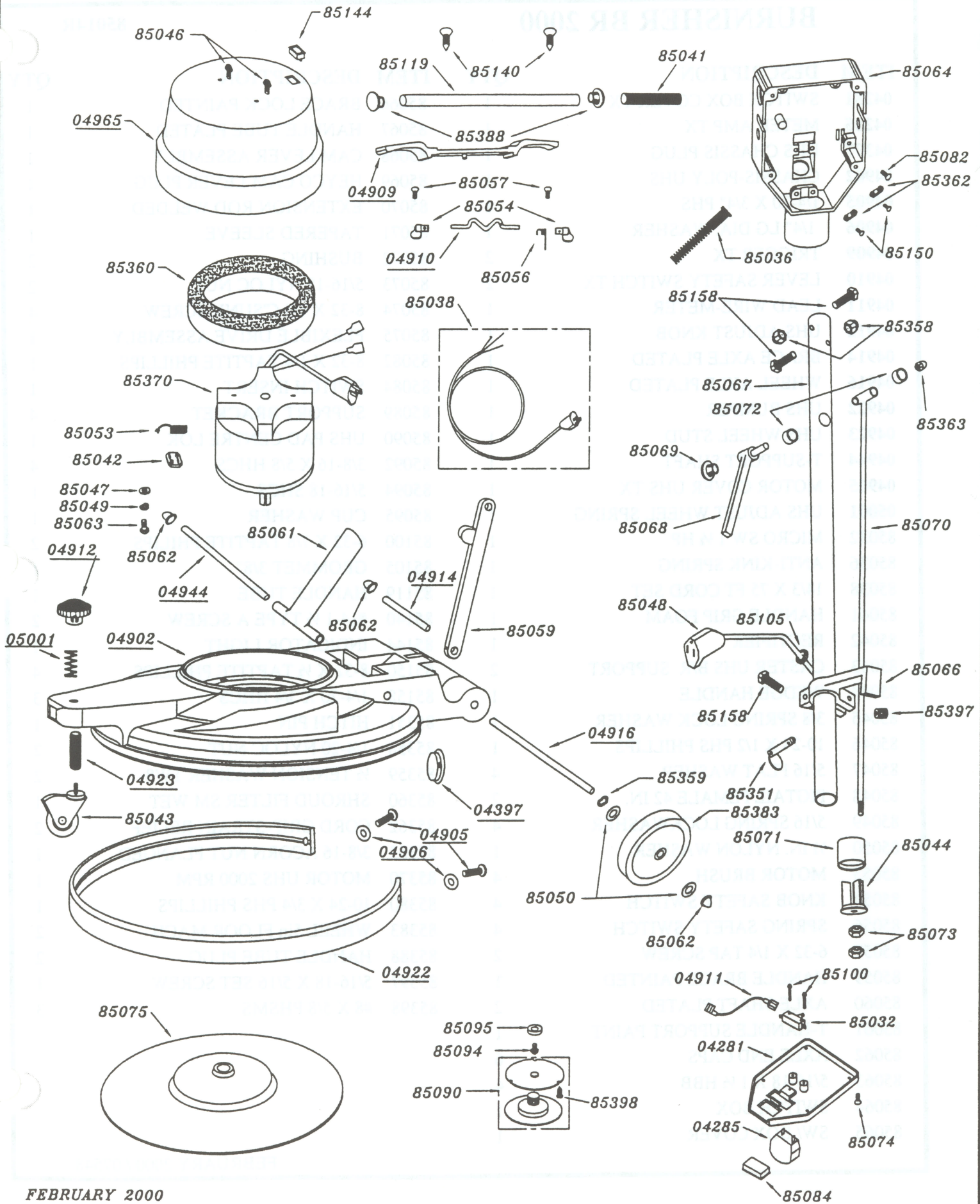
## Parts Schematic

Item #85014



Better Resources. Better Results.  
**BETCO**®





# BURNISHER BR 2000

85014R

ITEM	DESCRIPTION	QTY	ITEM	DESCRIPTION	QTY
04281	SWITCH BOX COVER TX	1	85066	BRACE LOCK PAINTED	1
04285	METER AMP TX	1	85067	HANDLE TUBE PLATED	1
04397	UHS CHASSIS PLUG	1	85068	CAM LEVER ASSEMBLY	1
04902	CHASSIS-POLY UHS	1	85069	HEYCO CAM LEVER PLUG	1
04905	1/4-20 X 3/4" PHS	1	85070	EXTENSION ROD WELDED	1
04906	1/4" LG DIA. WASHER	1	85071	TAPERED SLEEVE	1
04909	TRIGGER TX	2	85072	BUSHING	2
04910	LEVER SAFETY SWITCH TX	2	85073	5/16-18 NYLOC NUT	2
04911	LEAD WIRE-METER	1	85074	8-32 X 1/4 C'SUNK SCREW	4
04912	UHS ADJUST KNOB	1	85075	FLEXIBLE DRIVE ASSEMBLY	1
04914	BRACE AXLE PLATED	1	85082	8-32 X 1/4 TAPTITE PHILLIPS	1
04916	WHEEL AXLE PLATED	1	85084	SWITCH INSERT	1
04922	UHS BUMPER	1	85089	SUPPORT BRACKET	4
04923	UHS WHEEL STUD	1	85090	UHS PAD CENTRE LOK	1
04944	T-SUPPORT SHAFT	1	85092	3/8-16 X 5/8 HHCS	4
04965	MOTOR COVER UHS TX	1	85094	5/16-18 SHCS	1
05001	UHS ADJUST WHEEL SPRING	1	85095	CUP WASHER	1
85032	MICRO SW 1 1/2 HP	1	85100	6-32 X 7/8 TAPTITE PHILIPS	2
85036	ANTI-KINK SPRING	1	85105	GROMMET 3/8"	1
85038	14/3 X 75 FT CORD SET	1	85119	HANDLE TUBE	1
85041	HANDLE GRIP FOAM	1	85140	#14-1 1/2 TYPE A SCREW	2
85042	RECTIFIER	1	85144	INDICATOR LIGHT	1
85043	CASTER UHS B/R SUPPORT	2	85150	8-32 X 1/2 TAPTITE PHILLIPS	4
85044	WEDGE HANDLE	1	85158	1/4-20 X 3/4 HHCS	3
85045	3/8 SPRING LOCK WASHER	1	85351	HITCH PIN	1
85046	10-24 X 1/2 PHS PHILLIPS	1	85358	1/4-20 NYLOC NUT	2
85047	5/16 FLAT WASHER	4	85359	1/2 TENSION WASHER TW8	2
85048	PIGTAIL FEMALE 42 IN.	2	85360	SHROUD FILTER SM WET	1
85049	5/16 SPRING LOCKWASHER	4	85362	CORD GRIP-STRAIN RELIEF	2
85050	1/2 IN. NYLON WASHER	1	85363	3/8-16 ACORN NUT FLANGED	1
85053	MOTOR BRUSH	4	85370	MOTOR UHS 2000 RPM	1
85054	KNOB SAFETY SWITCH	4	85380	10-24 X 3/4 PHS PHILLIPS	1
85056	SPRING SAFETY SWITCH	4	85383	WHEEL 5in FLOOR MACH	2
85057	6-32 X 1/4 TAP SCREW	2	85388	HANDLE TUBE PLUG	2
85059	HANDLE BRACE PAINTED	1	85397	5/16-18 X 5/16 SET SCREW	1
85060	AXLE SHAFT PLATED	2	85398	#8 X 5/8 PHSMS	3
85061	T-HANDLE SUPPORT PAINT	1			
85062	AXLE END CAPS	6			
85063	5/16-18 X 1 1/2 HBB	4			
85064	SWITCH BOX	1			
85065	SW/ BOX COVER	1			