

**Parts and Service Manuals From:**



**On Line Materials for the Jan San Industry.**

**Since 1922**

**Michigan Company Inc.  
2011 N. High St.  
Lansing, Mi 48906  
(517) 484-9312**

**[Http://www.Michco.Com](http://www.Michco.Com)**

**Email:Shop@Michco.com**

**Order parts on line or by Phone**

**Visa, MasterCard, Amex**

**Shipping to US addresses only.**

**Materials contained in this manual Copyright respective manufacturer, PDF version made exclusively by Michco for our customer's use only. Any other use of PDF version violates our PDF copyright.**

# BR 750/1500

**ORDER #85015**

**20" 750/1500 RPM Dual  
Speed Burnisher**

## FEATURES

- Quick Detachable Handle for Easy Transport
- Patented Infinite Position Handle Height Adjustment
- Super-Flex Switch Levers
- Safety Switch Lock-Out
- Convenient Dual Speed Selection Switch
- Adjustable Dial for Precise Pad Pressure
- Heavy Duty Transport Wheels
- Flexible High Speed Pad Driver
- Direct Drive - No Belts, Gear Box or Pulleys
- Heavy Duty Motor for Durability and Long Life
- 75' Safety Yellow Power Cord

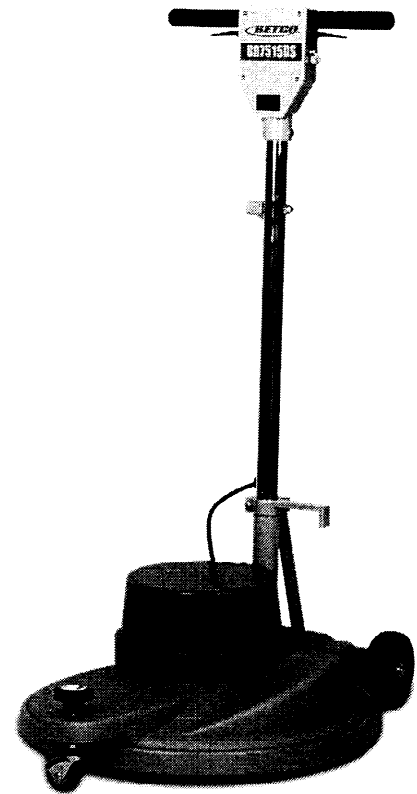
The Betco BR Dual Speed series Burnisher is engineered for easy use, operator safety and versatility. Dual RPM speed allows the operator to spray buff or spray clean a floor at 750 RPM's or high speed burnish at 1500 RPM's. All Betco Burnishers are CSA safety tested and certified. Built with the highest quality components, Betco Burnishers provide outstanding performance and durability.

## WARRANTY

3 year (except wear items)\*

\*Please refer to Betco Equipment Price/Product Guide for complete equipment warranty information.

**Authorized Betco Distributor:**



## SPECIFICATIONS

- Pad Size: 19" or 20"
- Pad Speed: 750/1500 RPM Dual Speed
- Motor: 1.5hp DC Rectified
- Amp Draw: 14.5 amps
- Cord: 75' Safety Yellow 14/3 Ga.
- Plug: Hospital Approved 3 prong
- Noise Level: 58 dB
- Weight: 76 lbs. (Net)
- CSA Tested and Certified

## APPLICATIONS

- Spray Cleaning/Buffering
- Dry Burnishing
- Restorative Burnishing

**Better Solutions Come From...**

**BETCO®**

1001 Brown Avenue • P.O. Box 3127 • Toledo, Ohio 43607-0127  
©All Rights Reserved 5/99 • Reorder #85015



# BURNISHER BR 7515

## PARTS LIST 85015

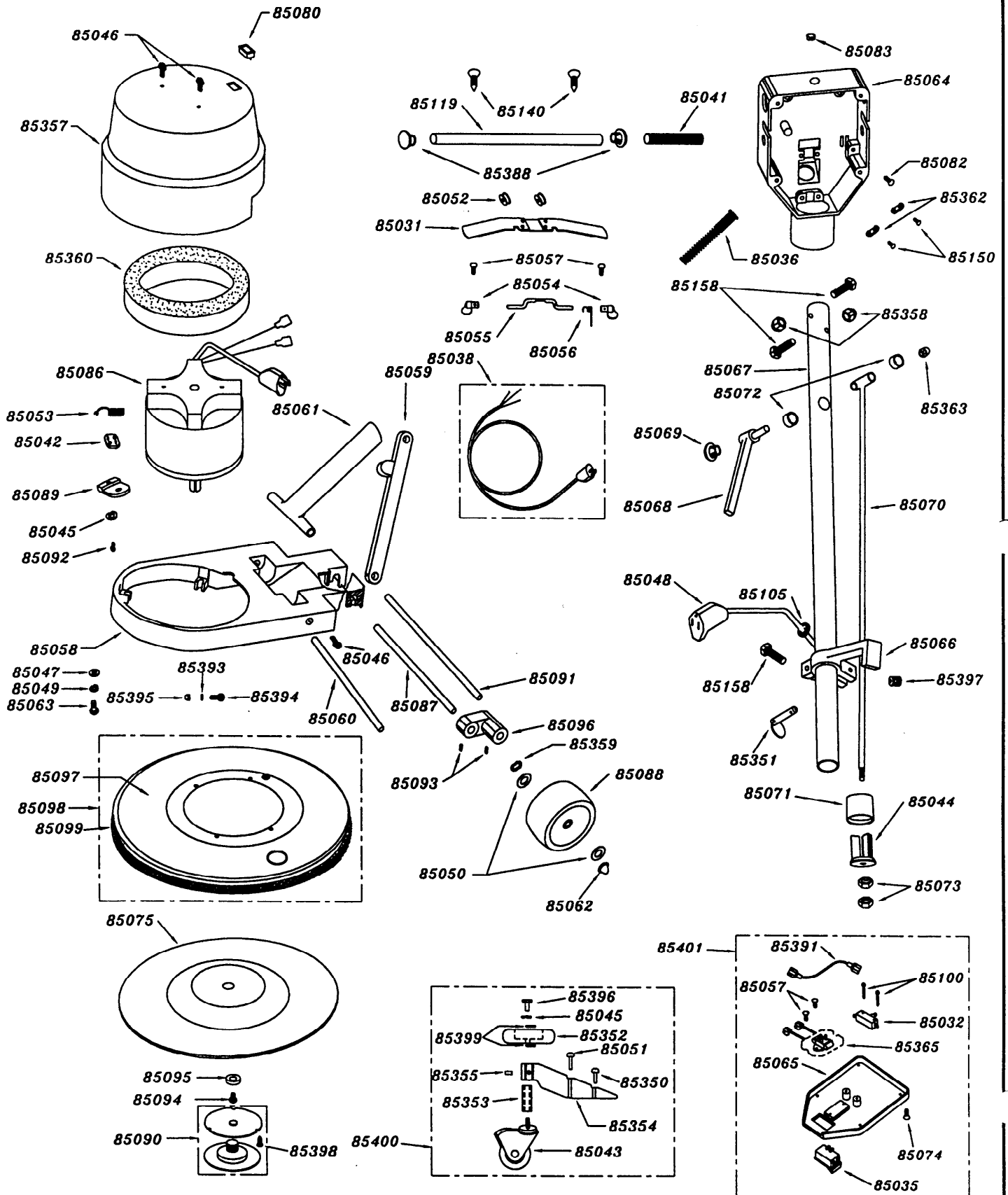
ITEM	DESCRIPTION	QTY	ITEM	DESCRIPTION	QTY
85031	TRIGGER ASSEMBLY	1	85091	WHEEL AXLE PLATED	1
85032	MICRO SW 1 1/2 HP	1	85092	3/8-16 X 5/8 HHCS	4
85035	HI-LO SWITCH	1	85093	#10-24 X 1/4 SS	8
85036	ANTI-KINK SPRING	1	85094	5/16-18 X 3/4	1
85038	CORD ASSEMBLY 14/3 X 75'	1	85095	FL WASHER 5/16 X 1 X 1/8	1
85041	HANDLE GRIP FOAM	2	85096	SHAFT ADAPTOR PAINTED	2
85042	RECTIFIER	1	85097	UHS BRUSH COVER	1
85043	CASTER UHS B/R SUPPORT	1	85098	UHS BRUSH COVER ASS'Y	1
85044	WEDGE HANDLE	1	85099	UHS BUMPER	1
85045	3/8 LOCKWASHER	4	85100	#6-32 X 7/8 PHS	2
85046	#10-24 X 1/2 PHS	4	85105	GROMMET 3/8"	1
85047	5/16 FLAT WASHER	4	85119	HANDLE TUBE	1
85048	PIGTAIL FEMALE 42 IN.	1	85140	#14-1 1/2 TYPE A SCREW	2
85049	5/16 SPRING LOCKWASHER	4	85150	#8-32 X 1/2 PHS	4
85050	1/2 IN. NYLON WASHER	6	85158	1/4-20 X 3/4 HHMS	3
85051	1/4-20 X 1-3/4 RHMS	1	85350	1/4-20 X 3/4 RHMS	1
85052	GROMMET 5/8"	2	85351	HITCH PIN	1
85053	MOTOR CARBON BRUSH	4	85352	UHS HAND WHEEL	1
85054	KNOB SAFETY SWITCH	2	85353	UHS WHEEL STUD	1
85055	LEVER SAFETY SWITCH	1	85354	UHS WHEEL BRACE	1
85056	SPRING SAFETY SWITCH	1	85357	MOTOR COVER UHS	1
85057	#6-32 X 1/4 PHS	4	85358	1/4-20 NYLOC NUT	2
85058	MAIN FRAME PAINTED	1	85359	1/2 TENSION WASHER TW8	6
85059	HANDLE BRACE PAINTED	1	85360	SHROUD FILTER SM WET	1
85060	AXLE SHAFT PLATED	1	85362	CORD GRIP	2
85061	T-HANDLE SUPPORT PAINT	1	85363	3/8-16 ACORN NUT FLANGED	1
85062	AXLE END CAPS	2	85365	SPEED CONTROL UHS	1
85063	5/16-18 X 1 1/2 HHMS	4	85388	HANDLE TUBE PLUG	2
85064	SWITCH BOX PAINTED	1	85391	LEAD WIRE SWITCH BOX	1
85065	SWITCH BOX COVER PAINT	1	85393	BW 8L BRASS WASHER	1
85066	BRACE LOCK PAINTED	1	85394	#8-32 X 3/4 RHMS	1
85067	HANDLE TUBE PLATED	1	85395	#8-32 NYLOC NUT	1
85068	CAM LEVER ASSEMBLY	1	85396	3/8-16 X 1 HHMS	1
85069	HEYCO CAM LEVER PLUG	1	85397	5/16 X 5/16 SS	1
85070	EXTENSION ROD WELDED	1	85398	#8 X 5/8 PHSMS	1
85071	TAPERED SLEEVE	1	85399	3/8 FLAT WASHER	2
85072	BUSHING	2	85400	UHS SUPPORT WHEEL ASS'Y	1
85073	5/16-18 NYLOC NUT	2	85401	UHS SW/ BOX COVER ASS'Y	1
85074	#6-32 X 3/8" FHS - COVER	4			
85075	FLEXIBLE DRIVE ASS'Y	1			
85080	INDICATOR LIGHT	1			
85082	#8-32 X 1/4 PHS	1			
85083	RESET INSERT	1			
85086	MOTOR 1-1/2 HP - 1500 RPM	1			
85087	BRACE AXLE PLATED	1			
85088	WHEEL UHS	2			
85089	SUPPORT BRACKET	4			
85090	UHS PAD CENTER LOK	1			

MAY 98

**BETCO**

# BURNISHER BR 75/15

85015



# BURNISHER BR 75/15

85015R

ITEM	DESCRIPTION	QTY	ITEM	DESCRIPTION	QTY
04397	UHS CHASSIS PLUG	1	85066	BRACE LOCK PAINTED	1
04905	1/4-20 X 3/4" PHS	2	85067	HANDLE TUBE PLATED	1
04906	1/4" LG DIA. WASHER	2	85068	CAM LEVER ASSEMBLY	1
04909	TRIGGER TX	1	85069	HEYCO CAM LEVER PLUG	1
04910	LEVER SAFETY SWITCH TX	1	85070	EXTENSION ROD WELDED	1
04912	UHS ADJUST KNOB	1	85071	TAPERED SLEEVE	1
04914	BRACE AXLE PLATED	1	85072	BUSHING	2
04916	WHEEL AXLE PLATED	1	85073	5/16-18 NYLOC NUT	2
04922	UHS BUMPER	1	85074	8-32 X 1/4 C'SUNK SCREW	4
04923	UHS WHEEL STUD	1	85075	FLEXIBLE DRIVE ASSEMBLY	1
04927	CHASSIS-POLY UHS	1	85082	8-32 X 1/4 TAPTITE PHILLIPS	1
04965	MOTOR COVER UHS TX	1	85086	MOTOR UHS 1500 RPM	1
85032	MICRO SW 1 1/2 HP	1	85089	SUPPORT BRACKET	4
85035	HI-LO SWITCH	1	85090	UHS PAD CENTRE LOK	1
85036	ANTI-KINK SPRING	1	85092	3/8-16 X 5/8 HHCS	4
85038	14/3 X 75 FT CORD SET	1	85093	10-24 X 1/4 SS	1
85041	HANDLE GRIP FOAM	2	85094	5/16-18 SHCS	1
85042	RECTIFIER	1	85095	CUP WASHER	1
85043	CASTER UHS B/R SUPPORT	1	85100	6-32 X 7/8 TAPTITE PHILIPS	2
85044	WEDGE HANDLE	1	85105	GROMMET 3/8"	1
85045	3/8 SPRING LOCK WASHER	4	85119	HANDLE TUBE	1
85046	10-24 X 1/2 PHS PHILLIPS	2	85140	#14-1 1/2 TYPE A SCREW	2
85047	5/16 FLAT WASHER	4	85144	INDICATOR LIGHT	1
85048	PIGTAIL FEMALE 42 IN.	1	85150	8-32 X 1/2 TAPTITE PHILLIPS	4
85049	5/16 SPRING LOCKWASHER	4	85158	1/4-20 X 3/4 HHCS	3
85050	1/2 IN. NYLON WASHER	4	85351	HITCH PIN	1
85053	MOTOR BRUSH	4	85358	1/4-20 NYLOC NUT	2
85054	KNOB SAFETY SWITCH	2	85359	1/2 TENSION WASHER TW8	2
85056	SPRING SAFETY SWITCH	1	85360	SHROUD FILTER SM WET	1
85057	6-32 X 1/4 TAP SCREW	2	85362	CORD GRIP-STRAIN RELIEF	2
85057	#6-32 X 1/4 PHS	2	85363	3/8-16 ACORN NUT FLANGED	1
85059	HANDLE BRACE PAINTED	1	85365	SPEED CONTROL UHS	1
85060	AXLE SHAFT PLATED	1	85380	10-24 X 3/4 PHS PHILLIPS	1
85061	T-HANDLE SUPPORT PAINT	1	85383	WHEEL 5in FLOOR MACH	2
85062	AXLE END CAPS	2	85388	HANDLE TUBE PLUG	2
85063	5/16-18 X 1 1/2 HBB	4	85391	LEAD WIRE SWITCH BOX	1
85064	SWITCH BOX	1	85397	5/16-18 X 5/16 SET SCREW	1
85065	SW/ BOX COVER	1	85398	#8 X 5/8 PHSMS	3
			85401	UHS SWI/BOX COVER ASS'Y	1

SEP 98

07546





## Operator Manual - BURNISHERS DUST 2000/2500 BR1500/2000 BR750/1500

### INTRODUCTION

This manual will help you get the most from your Betco Burnisher. Read it thoroughly before operating.

The Betco Burnisher is intended for commercial use.

#### PARTS & SERVICE:

Contact your BETCO AUTHORIZED DISTRIBUTOR for repair parts or service. Please specify the Model & Serial Number when discussing your machine.

#### NAME PLATE:

The Model & Serial Number of your machine is located on the Name Plate on the back of the handle assembly. This information is often needed when ordering repair parts for the machine.

---

### IMPORTANT SAFETY INSTRUCTIONS

When using an electrical appliance, basic precautions should always be followed, including the following:  
Read all instructions before using.

#### **! WARNING !**

To reduce risk of fire, electric shock, or injury:

- \* Do not leave the machine when it is plugged in. Unplug the unit from the outlet when not in use & before servicing.
- \* To avoid electric shock, do not expose machine to rain. Store indoors.
- \* Do not allow to be used as a toy. Close attention is necessary when used by or near children.
- \* Use only as described in this manual. Use only manufacturer's recommended attachments.
- \* Do not use with damaged cord or plug. If machine is not working as it should return it to a service center for inspection.
- \* Do not pull or carry by cord, use cord as a handle, close a door on a cord, or pull cord around sharp edges or corners. Do not run machine over cord. Keep cord away from heated surfaces.
- \* Do not unplug by pulling on cord. To unplug, grasp the plug, not the cord.
- \* Do not handle plug or machine with wet hands.
- \* Do not put any foreign object into openings. Do not use with any opening blocked; keep free of dust, lint, hair, & anything that may reduce air flow.
- \* Keep hair, loose clothing, fingers, & all parts of body away from openings & moving parts.
- \* Turn off all controls before unplugging.
- \* Do not use in or around flammable or combustible liquids such as gasoline or use in areas where they may be present.
- \* Connect to a properly grounded outlet only. See grounding instructions.

---

### GROUNDING INSTRUCTIONS

This machine must be grounded. If it should electrically malfunction, grounding provides a path of least resistance for electric current to reduce the risk of electric shock. This machine is equipped with a cord having an equipment-grounding conductor & grounding plug. The plug must be plugged into an appropriate outlet that is properly installed & grounded in accordance with all local codes & ordinances.

#### **! DANGER !**

Improper connection of the equipment-grounding conductor can result in a risk of electric shock. Check with a qualified electrician or service person if you are in doubt as to whether the outlet is properly grounded. Do not modify the plug provided with the machine. If plug will not fit the outlet, have a proper outlet installed by a qualified electrician.

Replace the plug if the grounding pin is damaged or broken.

---

Extension cords connected to this machine should be 12 gauge, 3-wire cords with 3-prong plugs & outlets. DO NOT use extension cords more than 50 feet long.

### PREPARING THE MACHINE FOR OPERATION

**! WARNING !**

This machine contains moving parts. To reduce the risk of injury, always unplug the power cord before servicing.

With the handle locked in the upright position, tip the entire machine backward, resting on handle assembly.

Align the proper burnishing pad on the flex-drive pad drive assembly, secure with locking plate, hand tight only.

**! CAUTION !**

Using the wrong pad on this machine can damage the floor or overload the motor. Before using, always make sure floor is clean & dry.

Unwrap the power cord completely & plug into a properly grounded outlet.

Adjust the handle to a comfortable position. This adjustment will vary from operator to operator.

Adjust the burnishing head for proper pad pressure using the adjustment knob located on the front of the burnisher.

Be prepared to control the machine as soon as you release the safety lock tab & pull either switch lever.

Immediately start moving forward. Keep the machine moving while the motor is running.

Note: When the dual controlled switch levers are released, the machine shuts off immediately.

### SPRAY BURNISHING BR1500 BR2000 BR750/1500

Lightly spray floor area to be burnished. (3 or 4 passes will restore appearance level)

### RESTORER BURNISHING Dust 2000 Dust 2500

Lightly mop floor with properly diluted restorer. Allow to dry before burnishing. Each side of a burnishing pad will cover approximately 500 square feet. Floors will require scrubbing & recoating periodically depending on wear & use.

Note: Dust Control Models Should Not Be Used For Spray Buffing. Spray Buffing Will Clog Filter And Damage Dust Control Skirt.

### AFTER USE

Return handle assembly to the upright, locked position.

Unplug the power cord, starting from the machine wrap the power cord onto the handle assembly.

With the machine in the upright, locked position, tip the entire machine backward, resting on the handle assembly.

Remove the burnishing pad from the machine. (clean all burnishing pads)

Wipe the entire machine with a clean, damp cloth.

Inspect the machine & all accessories for damage. Perform any required maintenance or repairs before storage.

Store the machine in a clean, dry place with the handle in the upright, locked position resting on pad.



Thank you for choosing

Floor Care Equipment!