

Parts and Service Manuals From:



On Line Materials for the Jan San Industry.

Since 1922

**Michigan Company Inc.
2011 N. High St.
Lansing, Mi 48906
(517) 484-9312**

[Http://www.Michco.Com](http://www.Michco.Com)

Email:Shop@Michco.com

Order parts on line or by Phone

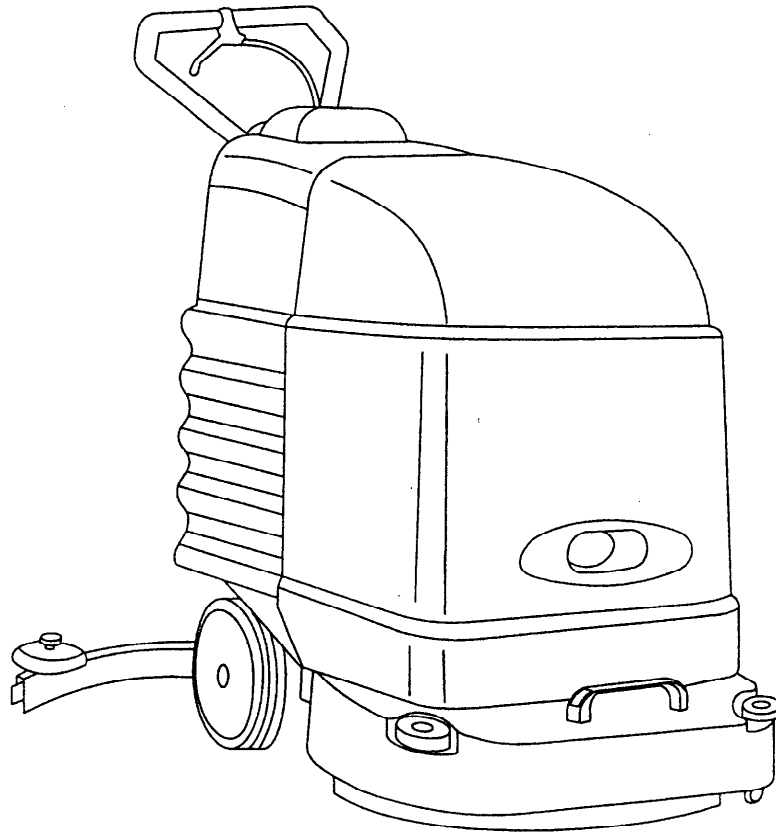
Visa, MasterCard, Amex

Shipping to US addresses only.

Materials contained in this manual Copyright respective manufacturer, PDF version made exclusively by Michco for our customer's use only. Any other use of PDF version violates our PDF copyright.



SPARE PARTS



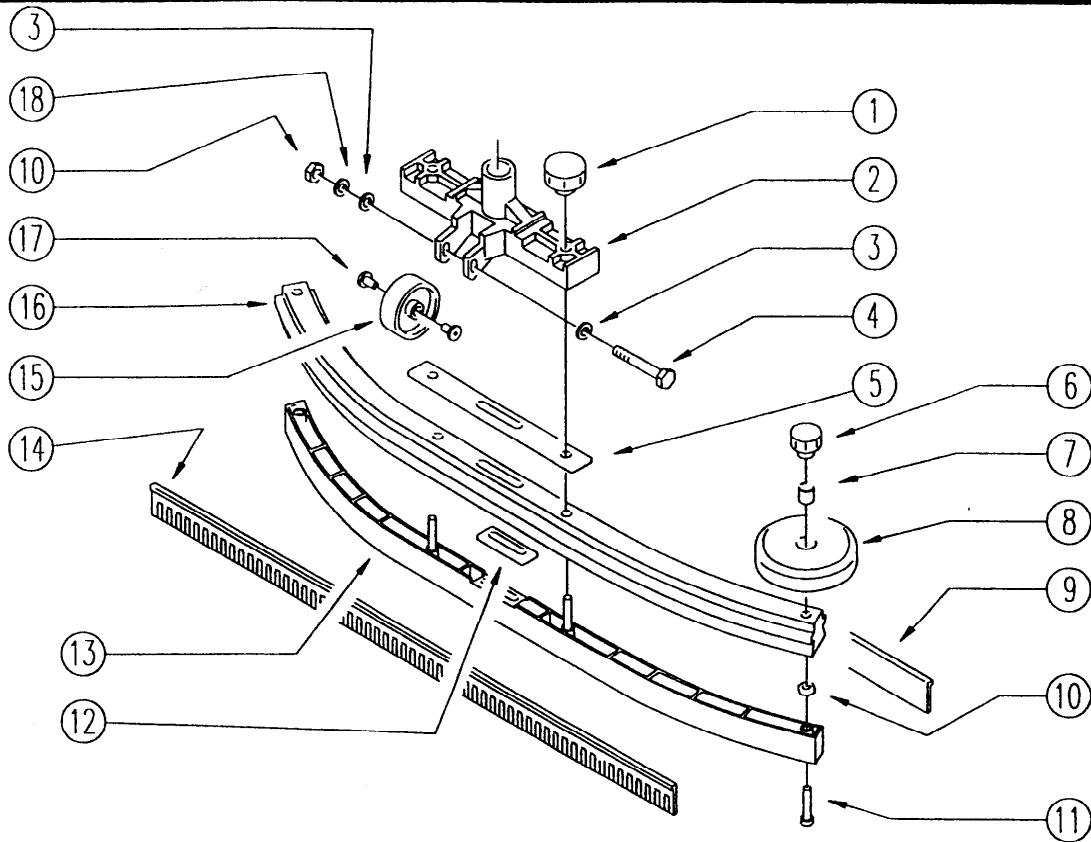
AS 20 AUTOMATIC

AUTOMATIC SCRUBBER

CODE:

pl1009 aa SN from 98F557

DESCRIPTION: SQUEEGEE 800

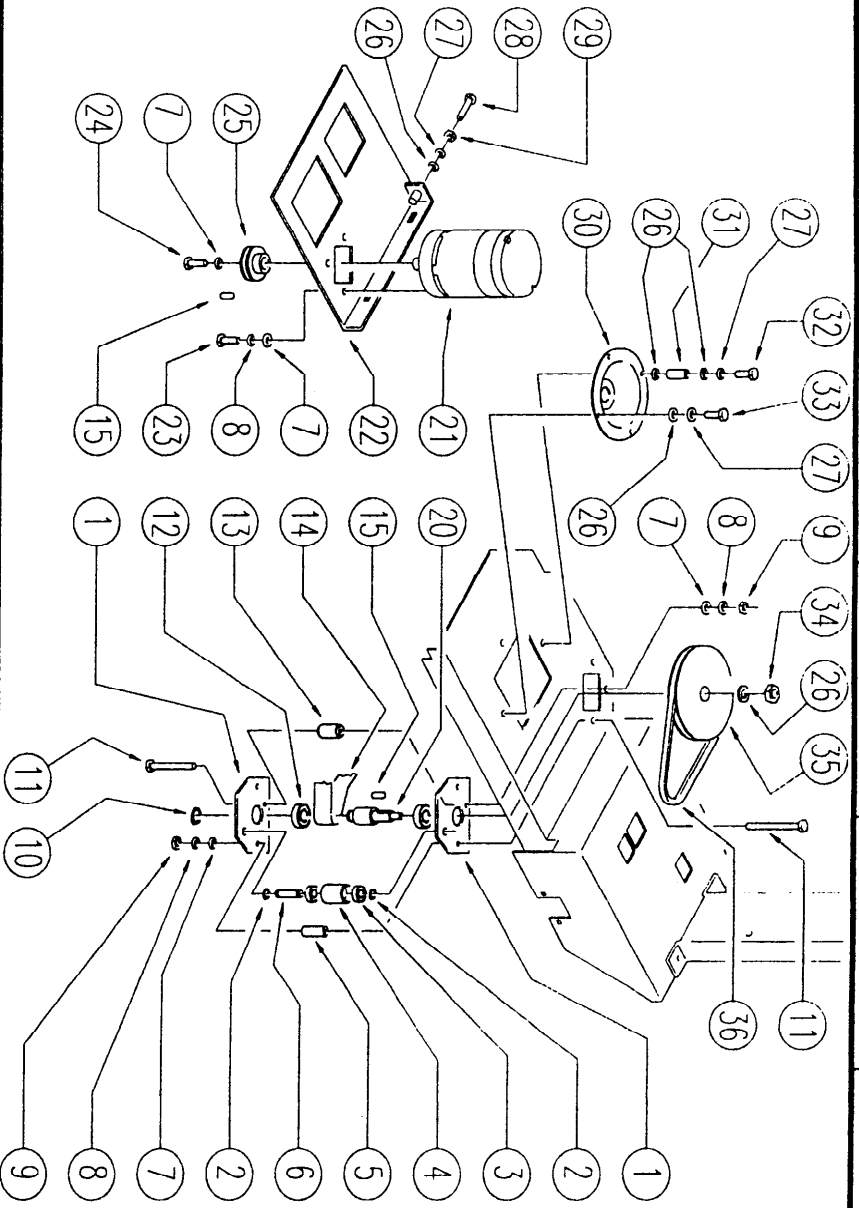


REF.	CODE	DESCRIPTION	QT
1	SL20002	HANDLE	2
2	SL01018	SUCTION POINT	1
3	SL06022	WASHER	2
4	SL04061	SCREW	1
5	SL03051	GASKET	1
6	SL20018	HANDLE	2
7	SL07082	SPACER	2
8	SL08040	WHEEL	2
9	SL03232	BLADE	1
10	SL05017	NUT	3
11	SL04331	SCREW	2
12	SL03052	GASKET	1
13	SL15036	INSERT	1
14	SL03435	BLADE	1
15	SL08015	WHEEL	1
16	SL15035	EXTRUDED	1
17	SL07077	BUSHING	2
18	SL06023	WASHER	1

DESCRIPTION:

MOTOR

CODE:

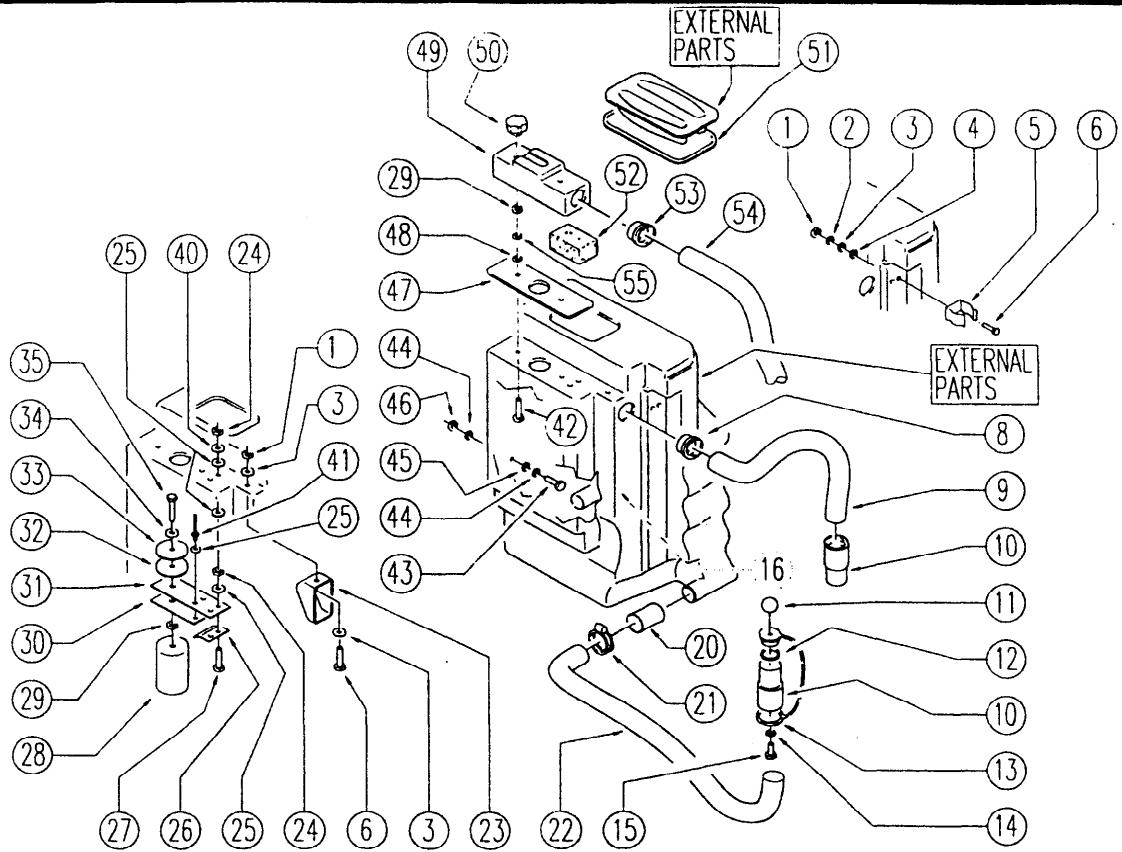


REF	CODE	DESCRIPTION	QT
1	S.09592	PLAQUE	2
2	S.L1095	RING	2
3	S.L12003	BEARING	2
4	S.L10045	PULLEY	1
5	S.L07143	BEARING	2
6	S.L1041	RIV / PLUG	1
7	S.096022	WASHER	8
8	S.096023	WASHER	7
9	S.095017	NUT	3
10	S.L11100	RING	1
11	S.L04061	SCREW	3
12	S.L12029	BEARING	2
13	S.L07191	BEARING	2
14	S.L16016	BELT	1
15	S.L11010	TANG / TONGUE	2
20	S.L07190	SHAFT	1
21	S.L02099	MOTOR	1
22	S.09588K	SUPPORT	1
23	S.L04135	SCREW	4
24	S.L04135	SCREW	1
25	S.L1049	PULLEY	1
26	S.L06041	WASHER	5
27	S.L09057	WASHER	8
28	S.L04156	SCREW	1
29	S.095046	NUT	1
30	S.L15023	FLANGE	1
31	S.L07196	BEARING	2
32	S.L04143	SCREW	2
33	S.L04134	SCREW	1
34	S.L05039	NUT	1
35	S.L10048	PULLEY	1
36	S.L16016	BELT	1

CODE:

pl1199K aa SN from 98L000

DESCRIPTION: TANK

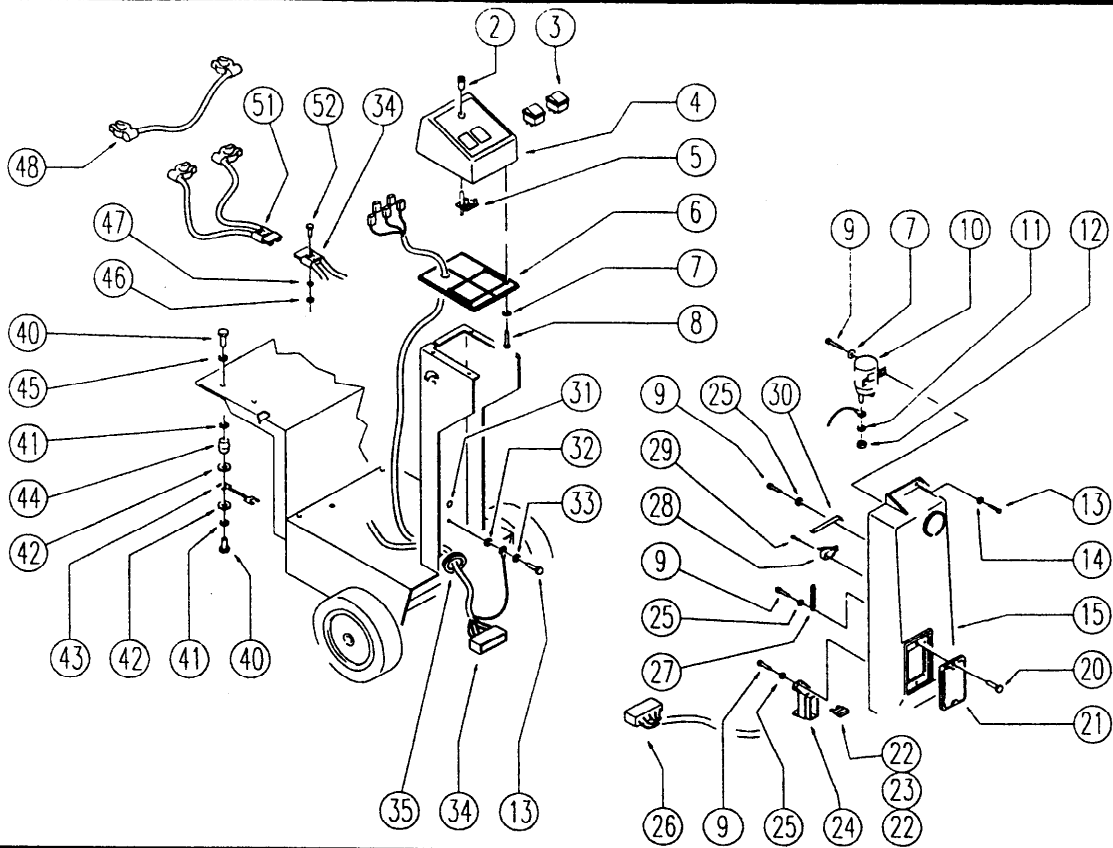


REF.	CODE	DESCRIPTION	QT
1	SL05016	NUT	3
2	SL06037	WASHER	2
3	SL06034	WASHER	4
4	SL03116	GASKET	2
5	SL13014	DUCT LOCK	1
6	SL04152	SCREW	3
8	SL07178	BUSHING / BUSH	1
9	SL19013	HOSE	1
10	SL14003	SLEEVE	2
11	SL20015	KNOB (o HANDWHEEL)	1
12	SL03215	GASKET	1
13	SL14237	CAP	1
14	SL06022	WASHER	3
15	SL04002	SCREW	1
16	SL07120K	CROSS	1
20	MP03196	SHEATH	1
21	SL14063	CLAMP	1
22	SL19113	HOSE	1
23	SL17155-1	BAFFLE PLATE	1
24	SL05044	NUT	4
25	SL06031	WASHER	4
26	SL09675	SMALL BRACKET	1
27	SL04189	SCREW	2
28	SL18065	FLOAT	1
29	SL05017	NUT	3
30	SL09364	PLATE	1
31	SL03111	RUBBER SHIM	1
32	SL03110	CAP	1
33	SL03235	CAP	1
34	SL06071	WASHER	1
35	SL04087	SCREW	1
40	SL06033	WASHER	2
41	SL14006	RIVET	2
42	SL04140	SCREW	2
43	SL04145	SCREW	1
44	SL06025	WASHER	1
45	SL03122	WASHER	2
46	SL05039	NUT	2
47	SL03113	GASKET	1
48	SL06071	WASHER	2
49	SL17141-1	BOX	1
50	SL20006	KNOB (o HANDWHEEL)	2
51	SL03470	GASKET	1
52	SL03109	FILTER	1
53	SL07044	BUSHING / BUSH	1
54	SL19100	HOSE	1
55	SL06023	WASHER	1

CODE:

pl1201 aa SN from 98E905

DESCRIPTION: ELECTRIC UNIT



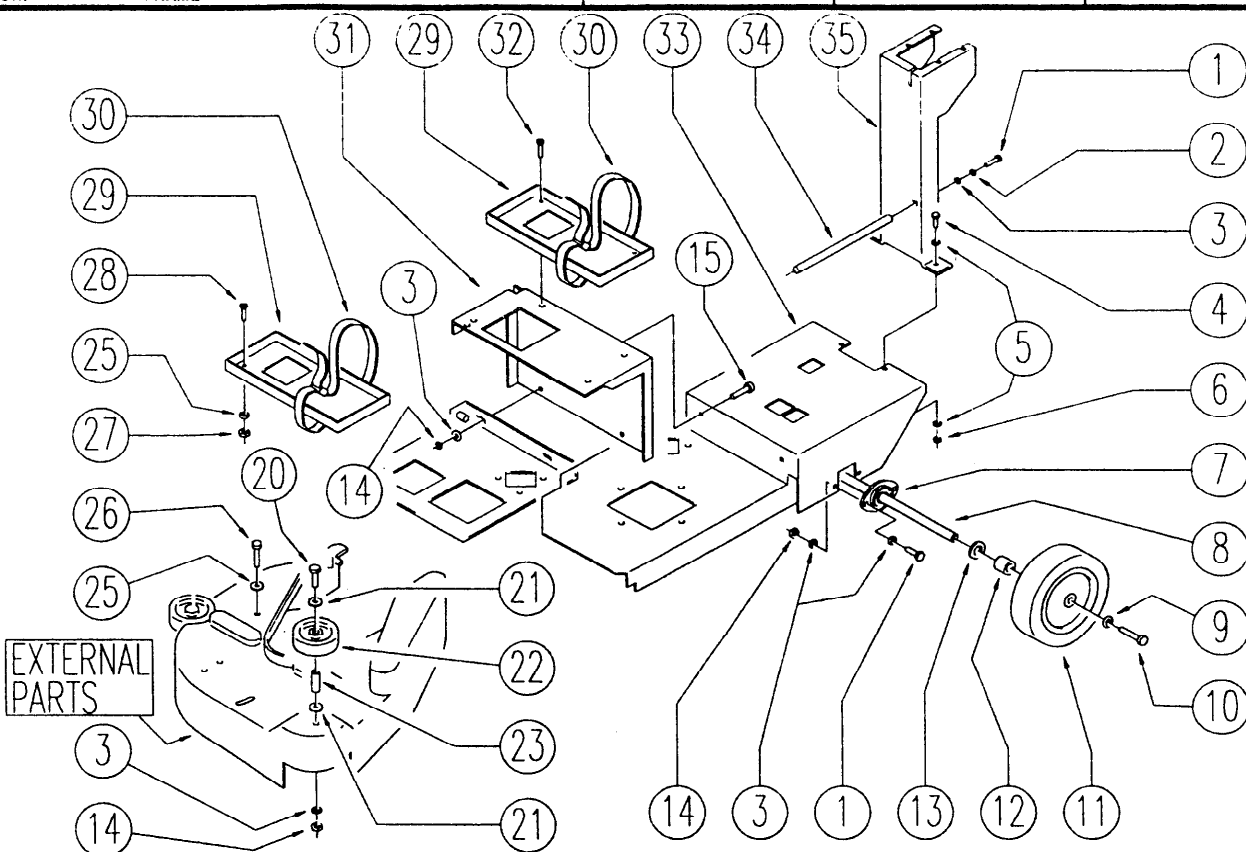
REF. CODE	DESCRIPTION	QT			
2	SL23031-1 REFLECTOR	1			
3	SL23183 SWITCH	2			
4	SL17175 CONTROL PANEL	1			
5	SL23031 GEARCASE / BOARD	1			
6	SL17178 CONTROL PANEL BASE	1			
7	SL06031 WASHER	4			
8	SL04177 SCREW	4			
9	SL04176 SCREW	4			
10	SL23001 TELE-SWITCH	1			
11	SL06002 WASHER	2			
12	SL05004 NUT	2			
13	SL04079 SCREW	3			
14	SL06019 WASHER	2			
15	SL17166 COVER	1			
20	SL04027 SCREW	2			
21	SL17149-1 LID	1			
22	SL23144 FUSE	2			
23	SL23147 FUSE	1			
24	SL23894-1 CONNECTOR	1			
25	SL06014 WASHER	2			
26	SL23818 WIRING	1			
27	SL13026 SPRING	1			
28	SL23120 MICROSWITCH	1			
29	SL04178 SCREW	2			
30	SL09499 FOIL / LAMINA	1			
31	SL25185 LABEL	1			
32	SL06033 WASHER	3			
33	SL06032 WASHER	1			
34	SL23817K WIRING	1			
35	SL23783 FAIRLEAD	1			
40	SL04092 SCREW	4			
41	SL06001 WASHER	4			
42	SL06015 WASHER	4			
43	SL23837 FUSE	1			
44	SL23842 FUSE	2			
45	SL06004 WASHER	2			
46	SL05009 NUT	2			
47	SL06024 WASHER	2			
48	SL23838 BRIDGE	1			
51	SL23839US WIRING	1			
52	SL04122 SCREW	2			

CODE:

pl1202WS aa SN from 98E905

DESCRIPTION:

FRAME



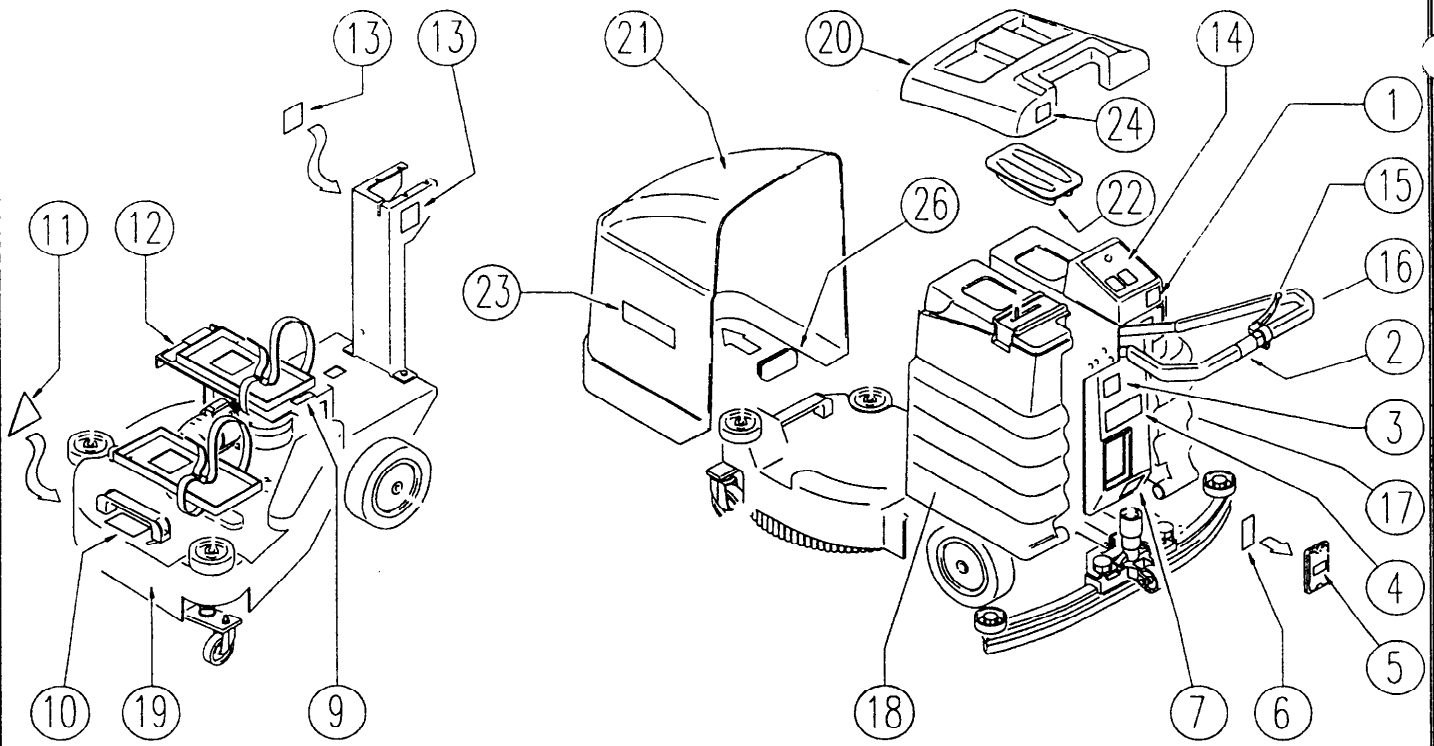
REF.	CODE	DESCRIPTION	QT
1	SL04048	SCREW	6
2	SL06023	WASHER	2
3	SL06022	WASHER	14
4	SL04145	SCREW	2
5	SL06003	WASHER	4
6	SL05039	NUT	2
7	SL12022	SUPPORT	2
8	SL07140	AXLE	1
9	SL06025	WASHER	2
10	SL04077	SCREW	2
11	SL08022	WHEEL / SMALL WHEEL	2
12	SL07211	BEARING	2
13	SL06058	WASHER	2
14	SL05041	NUT	8
15	SL04216	SCREW	2
20	SL04133	SCREW	2
21	SL06039	WASHER	4
22	SL08015	WHEEL / SMALL WHEEL	2
23	SL07165	BEARING	2
25	SL06038	WASHER	3
26	SL04055	SCREW	2
27	SL05043	NUT	1
28	SL04017	SCREW	1
29	SL17238	BATTERY BEARING SURFACE	2
30	SL14096	BELT	2
31	SL09587K	SUPPORT	1
32	SL04095	SCREW	2
33	SL09651	BASEMENT	1
34	SL09349	BEARING	1
35	SL09585	UPRIGHT / PILLAR	1

CODE:

pl1206BC aa SN from 98L000

DESCRIPTION:

EXTERNAL PARTS



REF.	CODE	DESCRIPTION	QT
1	SL25362	LABEL	1
2	SL25006G	LABEL	1
3	SL25053	LABEL	1
4	SL25177	LABEL	1
5	SL25187	LABEL	1
6	SL25244	LABEL	1
7	SL25288	LABEL	1
9	SL25251	LABEL	1
10	SL25488	LABEL	1
11	SL25472	ADESIVE LABEL	1
12	SL25257US	LABEL	1
13	SL25002G	ADESIVE LABEL	2
14	SL25232N	LABEL	1
15	SL20019-1	LEVER	1
16	SL09343	HANDGRIP	1
17	SL17230K-1	TANK	1
18	SL17136K-1	TANK	1
19	SL17320-1	BRUSH HOLDER	1
20	SL17436K-1BC	LID	1
21	SL17435K-1BC	HOOD	1
22	SL17552	LID	1
23	SL25751	LABEL	2
24	SL25614	LABEL	1
26	SL17440K-1BC	CAP	1

WE RESERVE THE RIGHT TO MODIFY SPECIFICATIONS WITHOUT NOTICE OR OBLIGATION



BETCO
1001 Brown Avenue - Toledo, Ohio 43607 - 1-800-777-9343