



Electronic Service Manuals

This electronic document is provided as a service to our customers. We do not create the contents of the information contained in this document. Should you have detailed questions pertaining to the information contained in this document, you may contact Michco, or the manufacturer which provided the original information in this electronic deliverable. Michco's only part in this electronic deliverable was the electronic assembly process.

You may contact Michco through the following methods:
Phone (517) 484-9312 or (800) 331-3339 MI, OH, IN only
2011 N. High St. -- Lansing, Michigan -- 48906
Fax: (517) 484-9836
Email: CustServ@Michco.com
Web site: www.Michco.Com
Parts Web site: www.FloorMachineParts.Com

Order Parts on Line at:
www.FloorMachineParts.Com

Directly to Parts & Service:
By Email: **Shop@Michco.com**
By Fax: (517) 702-2041
By Voice: Use numbers above.

Serving the Cleaning Industry Since 1922

Notice: All copyrighted material remains property of original owners, all trademarks are property of respective owners. Manuals are subject to Manufacturer's reproduction limitations. Originals or reproductions were provided by manufacturers through a request. We make no warranty as to the correctness of information provided in this document and you assume all risk.

Carpetwin™ 16XP/20XP



PARTS LIST

**Advance MODELS 56323776(20XP/120V / OBS)
56323777(16XP/120V), 56323778(16XP/230V)
56323779(16XP/100V)**



**Nilfisk
Advance**

setting standards

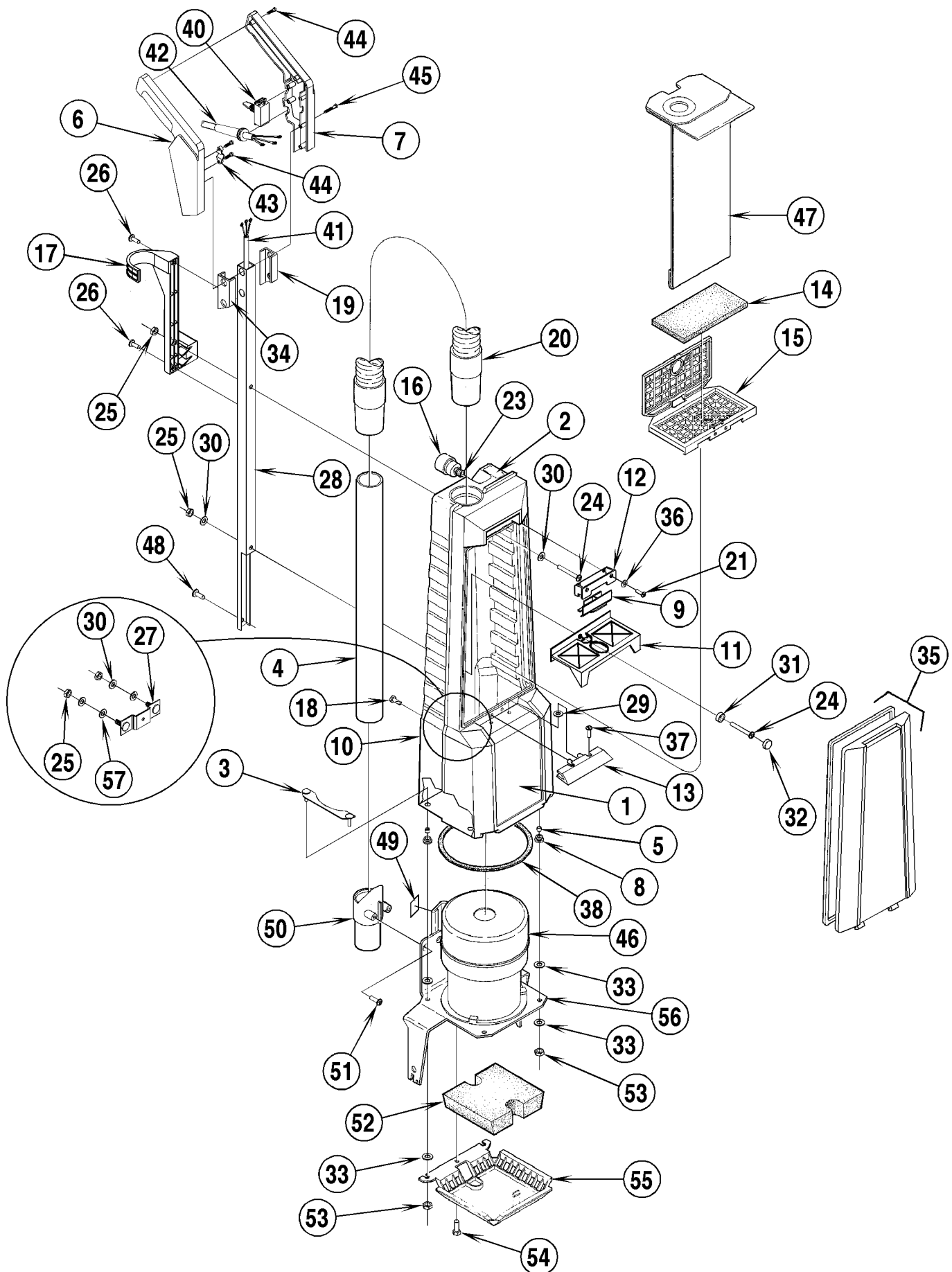
12/97 revised 7/01 FORM NO. 56042337

DESCRIPTION	PAGE
UPPER HOUSING	2-3
UPPER HOUSING (16XP ONLY AFTER SN1490096)	4-5
VACUUM MOTOR ASSEMBLY	6-7
BASE ASSEMBLY (16XP-120V / 230V)	8-9
BASE ASSEMBLY (16XP-100V)	10-11
BASE ASSEMBLY (20XP-120V)	12-13
WIRING DIAGRAMS (16XP)	14-15
WIRING DIAGRAM (20XP)	16-17

WHEN ORDERING PARTS

- * Use the 8 digit numbers from the "Ref. No." columns in this parts list.
- * Specify the model and serial number of the machine.
- * Use the space below to record the model and serial number for future reference.

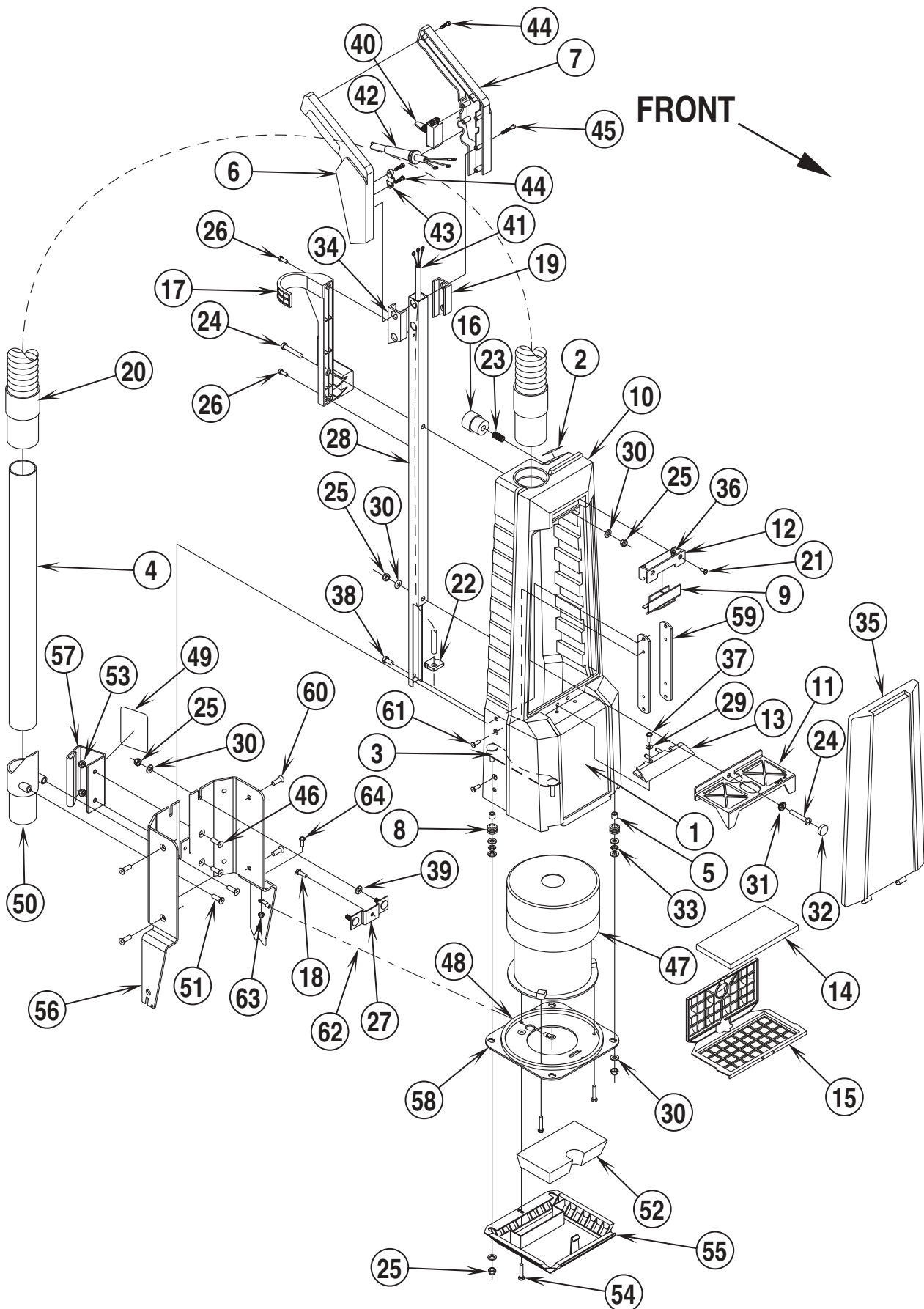
Model _____ Serial No. _____



97-12	UPPER HOUSING ASSEMBLY			
01-6	Carpetwin™ 16XP / 20XP			3

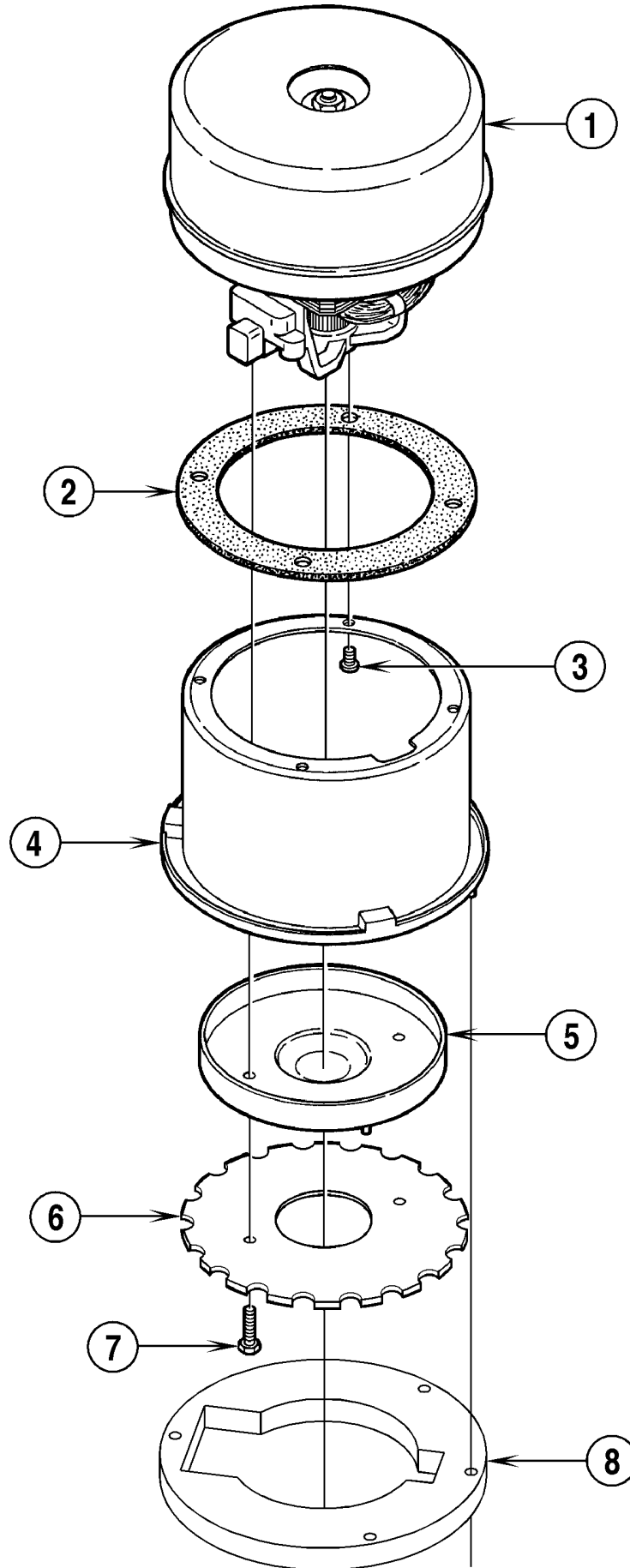
Item	Ref. No.	Qty	Description	Item	Ref. No.	Qty	Description
	56323814	1	Upper Housing Assy (16XP 100V)	37	56001993	2	Scr, Pan Hd Phil 10-24 x .50
	56323780	1	Upper Housing Assy (16XP 120V)	*	56002768	1	Nut, Hex Nyl Loc 10-24
	56323818	1	Upper Housing Assy (16XP 230V)	38	56323157	1	Gasket, Yoke
	56323781	1	Upper Housing Assy (20XP 120V)	39			Intentionally Omitted
			(Upper Housing #1-45)	40	56207077	1	Switch, Toggle
1	56016312	1	Decal, Housing	41	56323807	1	Cord Set (120V)
2	56015069	1	Decal, Bag Full		56323815	1	Cord Set (100V)
3	56323309	2	Strap Weld't.		56323819	1	Cord Set (230V)
4	56323141	1	Tube, Wand	42	56323806	1	Power Cord (120V)
5	56330027	4	Bushing		56323816	1	Power Cord (100V)
6	56329621	1	Handle, Right		56323817	1	Power Cord (230V)
7	56329620	1	Handle, Left	43	56329616	1	Cord Clamp
8	56321540	4	Grommet	44	56329623	3	Scr, Pan Phil Plastite 8-18 x .62
9	56323255	1	Latch	45	56329622	6	Scr, Pan Phil Plastite 8-18 x 1.00
10	56323791	1	Housing W/Tube	46	56323804	1	Motor, Vacuum Assy
11	56323290	1	Stand-Off, Bag				(16XP-120V see pages 6-7)
12	56323254	1	Housing, Latch		56323368	1	Motor, Vacuum Assy
13	56323146	1	Stop				(16XP-100V see pages 6-7)
14	56323158	1	Filter, Internal		56323822	1	Motor, Vacuum Assy
15	56323161	1	Filter Housing, Internal				(16XP-230V see pages 6-7)
16	56323170	1	Bag Full Indicator		56323370	1	Motor, Vacuum Assy
17	56323797	1	Bracket, Hose				(20XP-120V see pages 6-7)
18	56009135	1	Scr, Hex Hd Thd Form 10-24 x .62	47	56323153	1	Paper Filter Bag (pkg of 6)
19	56323793	1	Bracket, Left	*	56323195	1	Cloth Bag
20	56323167	1	Hose	*	56320676	1	Clip for Cloth Bag
21	56009180	2	Scr, Pan Phil Type B 8 x .38	*	56323251	1	Bio-Bag™
22			Intentionally Omitted				(pkg of 6 / optional, not included)
23	56750746	1	Nipple, 1/8-27 NPT	48	56009062	1	Scr, Pan Phil Thd Form 1/4-20 x .50
24	56002786	2	Scr, Pan Phil 1/4-20 x 1.50	49	56014369	1	Decal, Warning (120V)
25	56002491	4	Nut, Hex Nyl Loc 1/4-20		56017025	1	Decal, Warning Japan (100V)
26	56009029	2	Scr, Pan Phil Thd Form 10-24 x .50	50	56323148	1	Wand Receiver
27	56323790	1	Support Bracket	51	56009172	2	Scr, Flt Phil Ty A-B 1/4-14 x .62
28	56323792	1	Handle	52	56323275	1	Filter, Exhaust
29	56002140	2	Wsh, Flt SAE #8	53	56002708	4	Nut, Hex Nyl Loc 1/4-20
30	56002098	5	Wsh, Flt SAE 1/4	54	56003028	1	Scr, Hex Hd Loc 10-24 x 1.00
31	56323261	1	Base, Screw	55	56323160	1	Retainer, Exhaust Filter
32	56323262	1	Cover, Screw	56	56323786	1	Yoke (16XP)
33	56002098	8	Wsh, Flt SAE 1/4		56323788	1	Yoke (20XP)
34	56323794	1	Bracket, Right	57	56323374	2	Gasket
35	56323152	1	Cover Assembly				
*	56323151	1	Cover	*	56016000	1	Decal, Wear Items (16XP / 120V)
*	56323165	1	Gasket		56016001	1	Decal, Wear Items (20XP / 120V)
*	56016485	1	Decal, Carpetwin				
36	56002140	2	Wsh, Flt SAE #8				

* = Not Shown



Item	Ref. No.	Qty	Description	Item	Ref. No.	Qty	Description
	56323780	1	Upper Housing Assy (16XP 120V) (Upper Housing #1-45)	37	56001993	2	Scr, Pan Hd Phil 10-24 x .50
1	56016312	1	Decal, Housing	*	56002768	1	Nut, Hex Nyl Loc 10-24
2	56015069	1	Decal, Bag Full	38	56009062	1	Scr, Pan Phil Thd Form 1/4-20 x .50
3	56323309	2	Strap Weld't.	39	56323374	2	Gasket
4	56323141	1	Tube, Wand	40	56207077	1	Switch, Toggle
5	56330027	4	Bushing	41	56323807	1	Cord Set
6	56329621	1	Handle, Right	42	56323806	1	Power Cord
7	56329620	1	Handle, Left	43	56329616	1	Cord Clamp
8	56321540	4	Grommet	44	56329623	3	Scr, Pan Phil Plastiite 8-18 x .62
9	56323255	1	Latch	45	56329622	6	Scr, Pan Phil Plastiite 8-18 x 1.00
10	56323791	1	Housing W/Tube	46	56002760	2	Scr, Flt Hd 1/4-20 x .62
11	56323290	1	Stand-Off, Bag	47	56323804	1	Motor, Vacuum Assy (see pages 6-7)
12	56323254	1	Housing, Latch	48	56323157	1	Gasket, Yoke
13	56323146	1	Stop	49	56014369	1	Decal, Warning
14	56323158	1	Filter, Internal	50	56323148	1	Wand Receiver
15	56323161	1	Filter Housing, Internal	51	56009172	2	Scr, Flt Phil Ty A-B 1/4-14 x .62
16	56323170	1	Bag Full Indicator	52	56323275	1	Filter, Exhaust
17	56323797	1	Bracket, Hose	53	56002840	2	Nut, Hex Nyl Loc-Thin 1/4-20
18	56009135	1	Scr, Hex Hd Thd Form 10-24 x .62	54	56003028	1	Scr, Hex Hd Loc 10-24 x 1.00
19	56323793	1	Bracket, Left	55	56323160	1	Retainer, Exhaust Filter
20	56323167	1	Hose	56	56323004	1	Yoke
21	56009180	2	Scr, Pan Phil Type B 8 x .38	57	56323016	1	Hook, Cord
22	56323630	1	Grommet, Square	58	56323014	1	Motor Support
23	56750746	1	Nipple, 1/8-27 NPT	59	56323008	2	Backing Plate
24	56002786	2	Scr, Pan Phil 1/4-20 x 1.50	60	56009137	4	Scr, Phil Flt Thd Form 1/4-20 x .62
25	56002708	8	Nut, Hex Nyl Loc 1/4-20	61	56009065	4	Scr, Phil Flt Thd Form 10-24 x .50
26	56009029	2	Scr, Pan Phil Thd Form 10-24 x .50	62	56323034	1	Wire, Ring / Ring
27	56323790	1	Support Bracket	63	56002768	1	Nut, Hex Nyl Loc 10-24
28	56323792	1	Handle	64	56001993	1	Scr, Pan Hd Phil 10-24 x .50
29	56002140	2	Wsh, Flt SAE #8				
30	56002098	17	Wsh, Flt SAE 1/4	*	56323153	1	Paper Filter Bag (pkg of 6)
31	56323261	1	Base, Screw	*	56323195	1	Cloth Bag
32	56323262	1	Cover, Screw	*	56320676	1	Clip for Cloth Bag
33	56009087	4	Nut, Hex Jam 1/4-20	*	56323251	1	Bio-Bag™ (pkg of 6 / optional, not included)
34	56323794	1	Bracket, Right				
35	56323152	1	Cover Assembly				
*	56323151	1	Cover				
*	56323165	1	Gasket				
*	56016485	1	Decal, Carpetwin				
36	56002140	2	Wsh, Flt SAE #8				

* = Not Shown

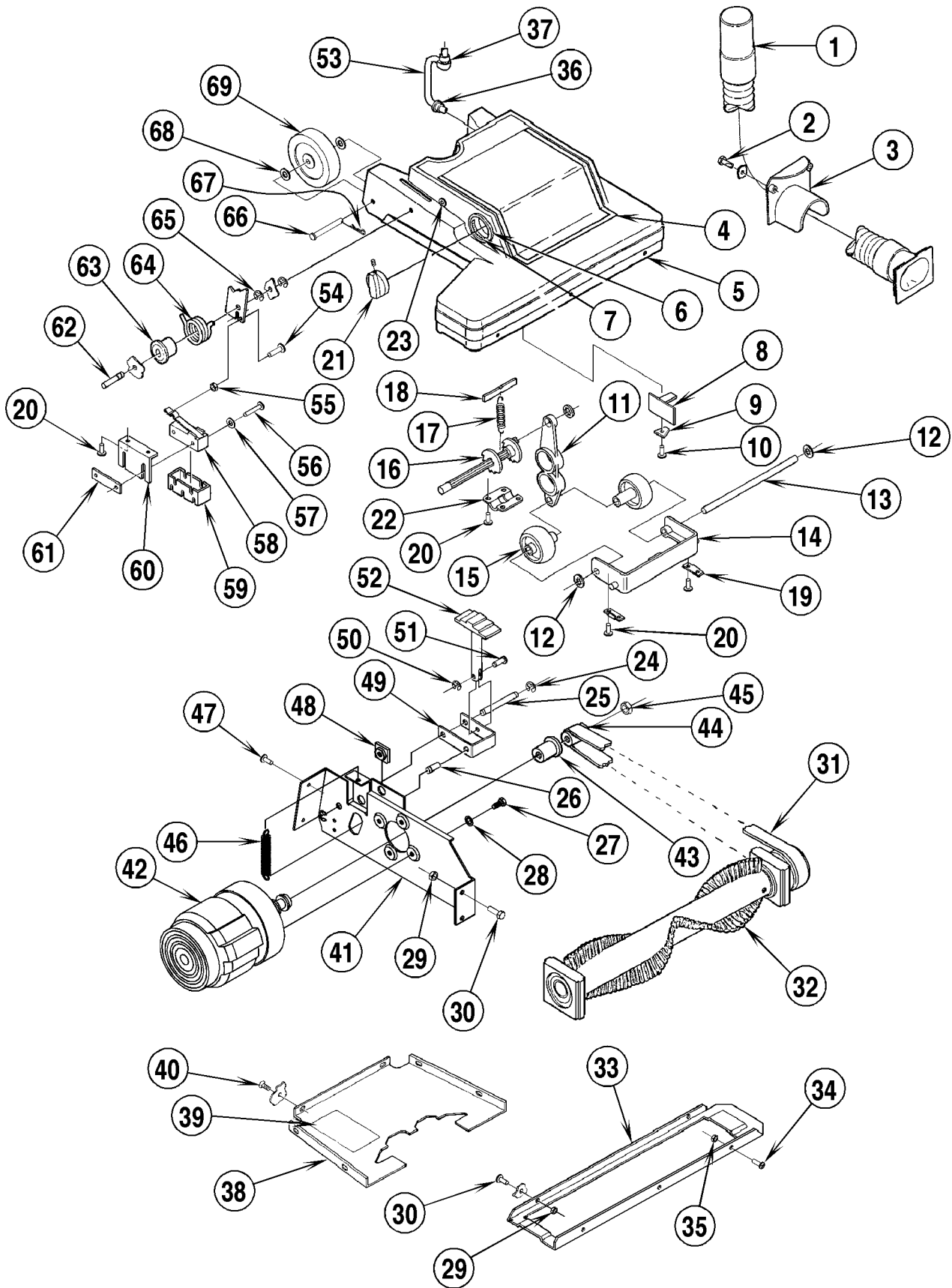


97-12	VACUUM MOTOR ASSEMBLY		
00-6	Carpetwin™ 16XP / 20XP		7

Item	Ref. No.	Qty	Description
	56323368	1	Motor, Vacuum Assy (16XP-100V)
	56323804	1	Motor, Vacuum Assy (16XP-120V)
	56323822	1	Motor, Vacuum Assy (16XP-230V)
	56323370	1	Motor, Vacuum Assy (20XP-120V)
1	56323177	1	Vacuum Motor (100V / 120V)
*	56203518	1	Carbon Brush, Set (for 323177)
	56323242	1	Vacuum Motor (16XP-230V)
*	56503017	1	Carbon Brush, Set (for 56323373)
2	56209325	1	Motor Gasket
3	56009030	4	Screw, Pan Phil HP5 10-24 x .38
4	56323805	1	Vacuum Motor Cup
*	56467171	1	Grommet
5	56323044	1	Inner Baffle
6	56323009	1	Outer Baffle NOTE
7	56009038	2	Screw, Hex Hd Thd Form 10-24 x .88
*	56001954	2	Wsh, Flt SAE #10
8	56323064	1	Cup Gasket
*	56009012	2	Scr, Hex Thd Form 10-24 x .38
*	56002011	2	Wsh, Int Shprf #10
*	56478246	2	Wire Tie
*	56014119	1	Decal, Ground Symbol (230V)

* = Not Shown

NOTE: Install the lip on outer baffle (#6) turned away from the motor.

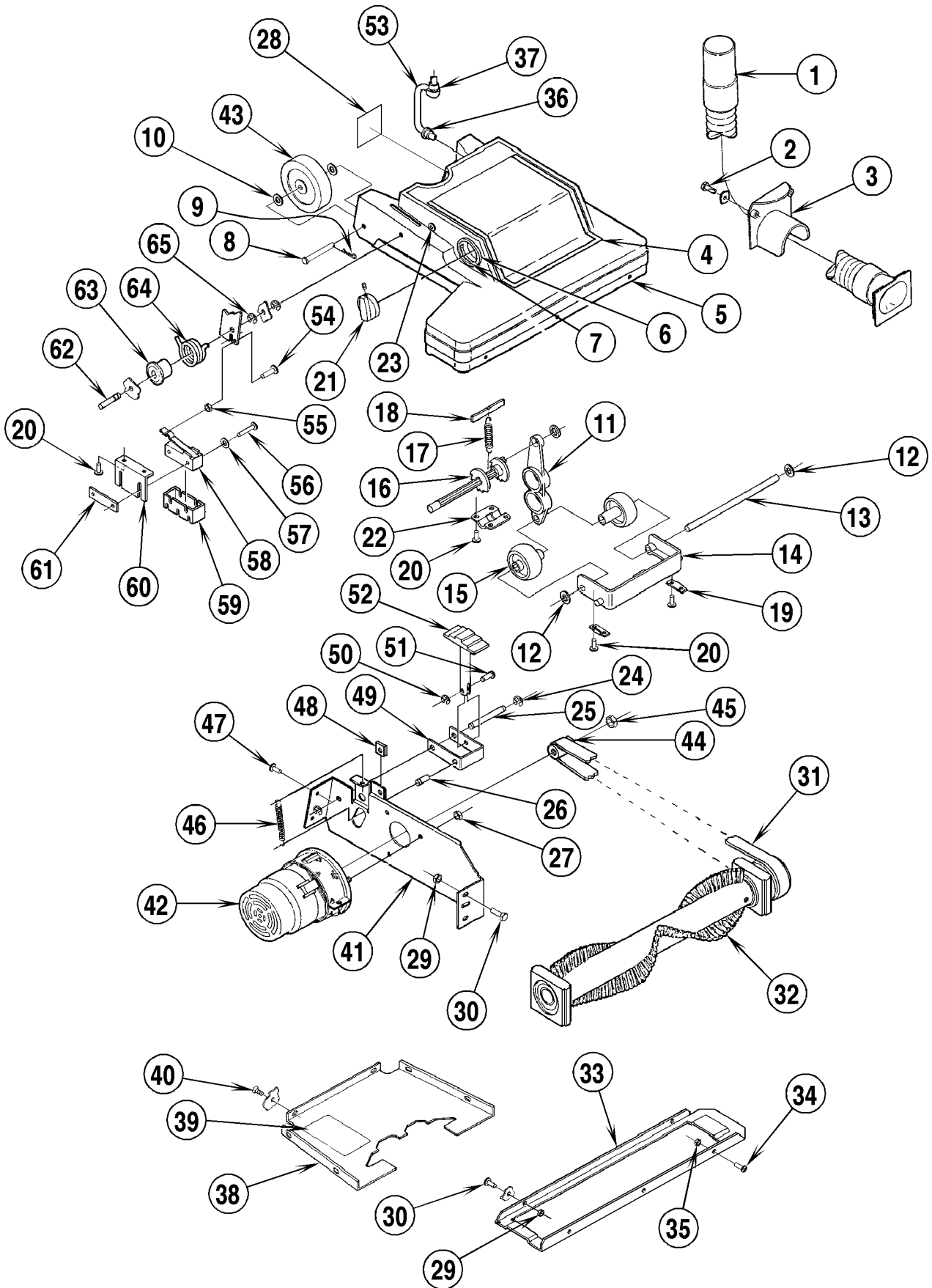


97-12	BASE ASSEMBLY (16XP-120V / 230V)			
00-6	Carpetwin™ 16XP / 20XP			9

Item	Ref. No.	Qty	Description	Item	Ref. No.	Qty	Description
	56323783	1	Base Assy Twin 16XP-120V	38	56323133	1	Base Cover
	56323784	1	Base Assy Twin 16XP-230V	*	56245234	2	Wire, Ground
1	56323168	1	Hose	39	56015763	1	Decal, Wiring (120V)
2	56009120	2	Scr, Pan Phil SS B 1/4-14 x .62		56016169	1	Decal, Wiring (230V)
3	56323176	1	Baffle	40	56009133	5	Scr, Flt Phil HP5 Loc 10-24 x .50
4	56016427	1	Decal, Carpetwin 16	41	56323810	1	Motor Bracket (NOTE 1)
5	56323787	1	Base Housing	42	56323801	1	Brush Motor Assy (120V / NOTE 1)
6	56325410	1	Knob Insert	*	56323827	2	Carbon Brush for 323801
7	56021106	1	Decal, Knob		56323825	1	Brush Motor Assy (230V)
8	56323348	1	Circuit Board (120V)	*	56323827	2	Carbon Brush for 323825
	56323007	1	Circuit Board (230V)	43		1	Motor Spacer (included with #42)
9	56323595	1	Retainer Clip	44		1	Motor Pulley (included with #42)
10	56003196	1	Scr, Pan Phil Plas 6-18 x .62	45	56002719	1	Nut, Hex M6-1.00
	56323102	1	Ratchet Assembly (#11-18)	46	56321087	1	Spring
11	56323038	1	Link	47	56009030	2	Scr, Pan Phil Thd Form 10-24 x .38
12	56325227	3	Nut	48	56321520	1	Clamp Nut
13	56325229	1	Pivot Pin	49	56328598	1	Latch
14	56323028	1	Yoke	50	56003267	1	Retaining Ring
15	56323025	2	Wheel	51	56321068	1	Pin
16	56323027	1	Ratchet	52	56323036	1	Pedal
17	56320484	1	Spring	53	56323799	1	Cord (120V)
18	56323035	1	Ratchet Catch		56323800	1	Cord (230V)
19	56325213	2	Clamp	*	56478246	6	Cable Tie
20	56009129	10	Scr, Pan Phil Type B 6 x .38	54	56001860	1	Scr, Pan Phil 8-32 x .75
21	56324502	1	Knob	55	56002865	1	Nut, Hex Nyl Loc Thin 8-32
22	56325225	1	Ratchet Retainer	56	56003393	2	Scr, Hex 6-32 x 1.25
23	56323055	2	Stop Bushing	57	56002006	2	Wsh, Flt SAE #6
*	56002032	2	Scr, Soc 1/4-20 x .62	58	56323271	1	Brush Motor Switch
*	56002708	1	Nut, Hex Nyl Loc 1/4-20	*	56323803	1	Wire (COM term.)
24	56003268	2	Retaining Ring	*	56323270	1	Wire (N.C. term.)
25	56323353	1	Pin	59	56323272	1	Terminal Cover
26	56328642	1	Groove Pin	60	56321615	1	Bracket
27	56009193	4	Scr, Hex Loc M6-1 x 10 mm	61	56376015	1	Nut Plate
28	56009188	4	Wsh, Int Shprf M6	62	56323089	2	Pivot Pin
29	56002768	6	Nut, Hex Nyl Loc 10-24	63	56323124	1	Bushing
30	56002503	5	Scr, Hex 10-24 x .50	64	56323123	1	Torsion Spring
31	56323284	1	Belt	65	56003262	4	Retaining Ring
32	56323285	1	Brush Assembly	66	56321404	2	Axle Pin
**	56323043	1	Brush	67	56003222	2	Cotter Pin
**	56003256	1	Retaining Ring	68	56009024	4	Wsh, Bowed
**	56320140	2	Bearing Block	69	56327530	2	Wheel
**	56323278	1	Brush Pulley				
**	56372773	2	Bearing				
33	56325530	1	Shoe				
34	56002396	3	Scr, Flt Phil 8-32 x .50				
35	56002808	4	Nut, Hex Nyl Loc 8-32				
36	56163015	1	Strain Relief				
37	56754199	1	Strain Relief				

* = Not Shown
** = Included in Brush Assembly 56323285

NOTE: If you have a 120V machine before serial number 1236138, you will need to order Brush Motor Kit PN 56323829 when replacing either the Brush Motor or the Brush Motor Bracket.

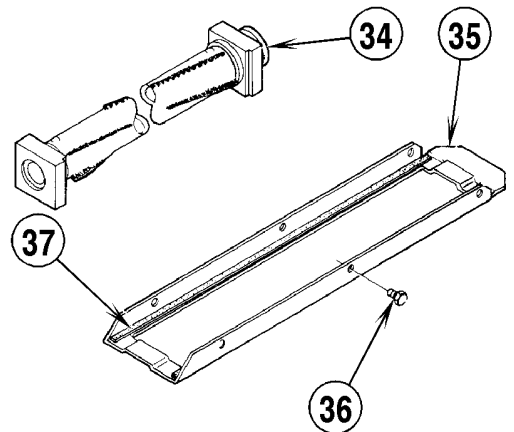
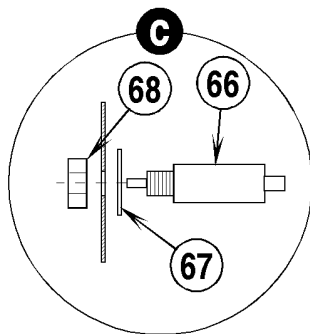
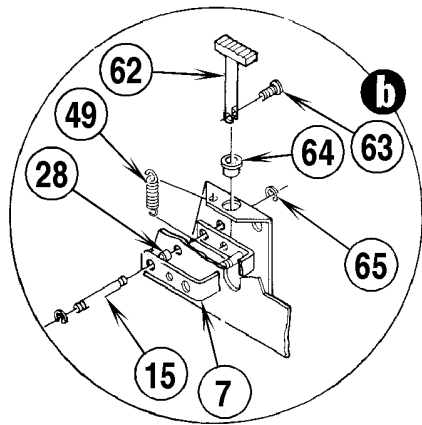
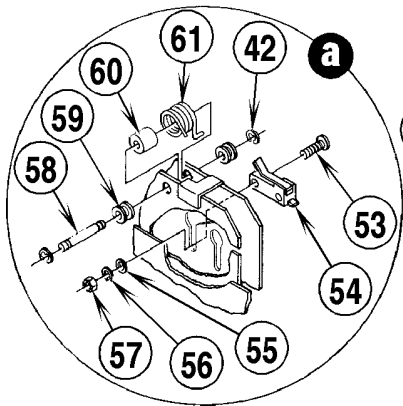
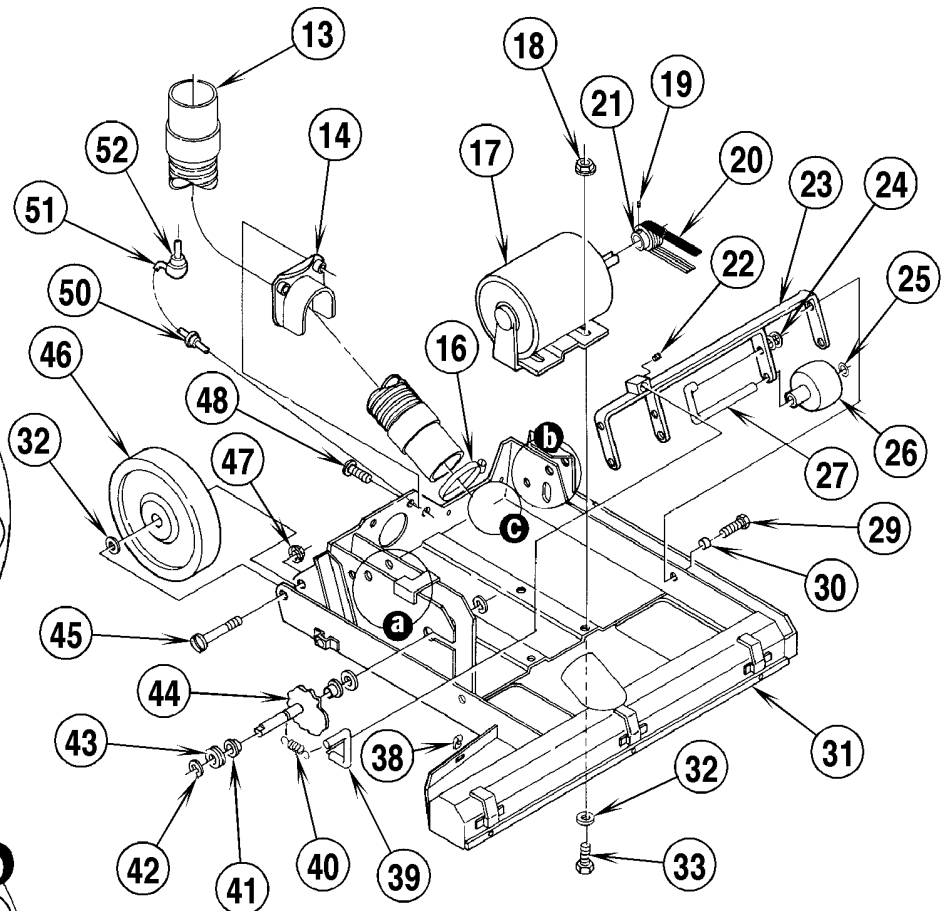
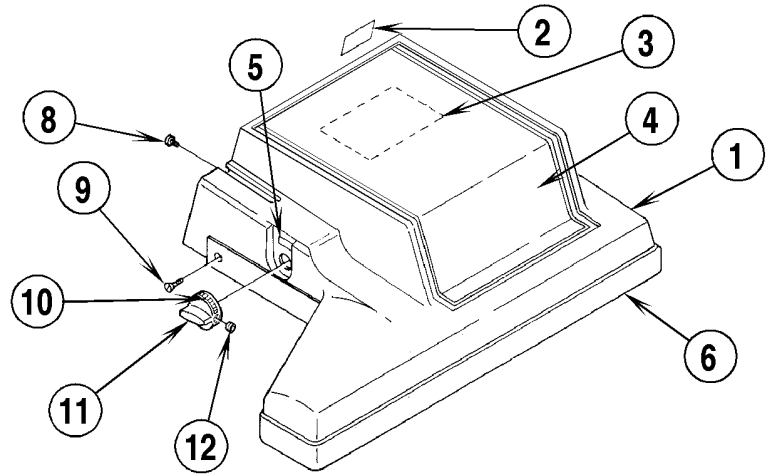


97-12	BASE ASSEMBLY (16XP-100V)			
00-6	Carpetwin™ 16XP / 20XP			11

Item	Ref. No.	Qty	Description	Item	Ref. No.	Qty	Description
	56323785	1	Base Assy Twin 16XP-100V	36	56163015	1	Strain Relief
1	56323168	1	Hose	37	56754199	1	Strain Relief
2	56009120	2	Scr, Pan Phil SS B 1/4-14 x .62	38	56323133	1	Base Cover
3	56323176	1	Baffle	39	56016079	1	Decal, Wiring (100V)
4	56016427	1	Decal, Carpetwin 16	40	56009133	5	Scr, Flt Phil HP5 Loc 10-24 x .50
5	56323787	1	Base Housing	41	56323183	1	Bracket, Motor Mount
6	56325410	1	Knob Insert	42	56323812	1	Brush Motor (100V)
7	56021106	1	Decal, Knob	*	56323097	1	Carbon Brush, Set (for 56323812)
8	56321404	2	Axle Pin	*	56323340	1	Screen
9	56003222	2	Pin, Cotter	*	56002504	1	Scr, Hex Hd 10-24 x .75
10	56009024	4	Wsh, Bowed	*	56002768	1	Nut, Hex Nyl Loc 10-24
	56323102	1	Ratchet Assembly (#11-18)	43	56327530	2	Wheel
11	56323038	1	Link	44	56323156	1	Motor Pulley
12	56325227	3	Nut	45		1	Nut, Hex
13	56325229	1	Pivot Pin	46	56321087	1	Spring
14	56323028	1	Yoke	47	56009030	2	Scr, Pan Phil Thd Form 10-24 x .38
15	56323025	2	Wheel	48	56321520	1	Clamp Nut
16	56323027	1	Ratchet	49	56328598	1	Latch
17	56320484	1	Spring	50	56003267	1	Retaining Ring
18	56323035	1	Ratchet Catch	51	56321068	1	Pin
19	56325213	2	Clamp	52	56323036	1	Pedal
20	56001909	10	Scr, Pan Hd Phil 6-32 x .38	53	56323811	1	Cord (100V)
21	56324502	1	Knob	*	56478246	6	Cable Tie
22	56325225	1	Ratchet Retainer	54	56002146	1	Scr, Pan Phil 8-32 x .62
23	56323055	2	Stop Bushing	55	56002865	1	Nut, Hex Nyl Loc Thin 8-32
*	56002032	2	Scr, Soc 1/4-20 x .62	56	56003393	2	Scr, Hex 6-32 x 1.25
*	56002708	1	Nut, Hex Nyl Loc 1/4-20	57	56002006	2	Wsh, Flt SAE #6
24	56003268	2	Retaining Ring	58	56323271	1	Brush Motor Switch
25	56323353	1	Pin	*	56323803	1	Wire (COM term.)
26	56328642	1	Groove Pin	*	56323267	1	Wire Ring /M. Tab (N.C. term.)
27	56002562	3	Nut, Keps 8-32	59	56323272	1	Terminal Cover
28	56017025	1	Decal, Warning Japan (100V)	60	56321615	1	Bracket
29	56002768	6	Nut, Hex Nyl Loc 10-24	61	56376015	1	Nut Plate
30	56002503	4	Scr, Hex 10-24 x .50	62	56323089	2	Pivot Pin
31	56323021	1	Belt	63	56323124	1	Bushing
32	56323082	1	Brush Assembly	64	56323123	1	Torsion Spring
**	56323043	1	Brush	65	56003262	4	Retaining Ring
**	56900137	1	Retaining Ring				
**	56320140	2	Bearing Block				
**	56323031	1	Brush Pulley				
**	56372773	1	Bearing				
33	56325530	1	Shoe				
34	56002396	3	Scr, Flt Phil 8-32 x .50				
35	56002808	4	Nut, Hex Nyl Loc 8-32				

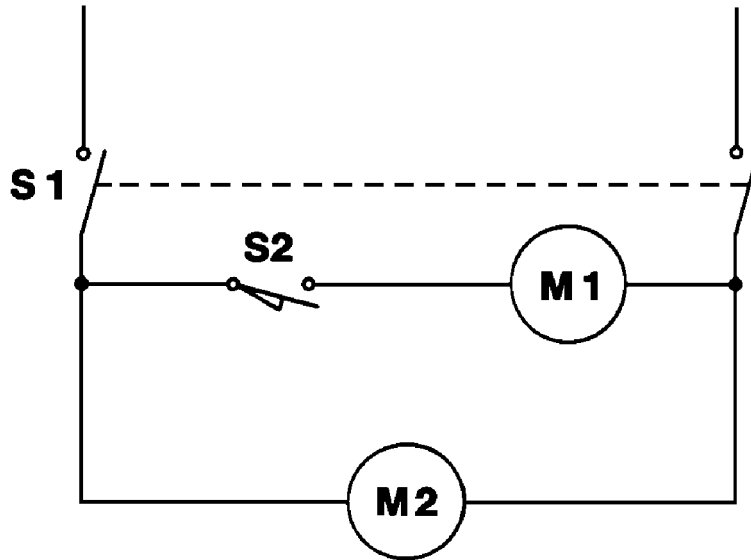
* = Not Shown

** = Included in Brush Assembly 56323082

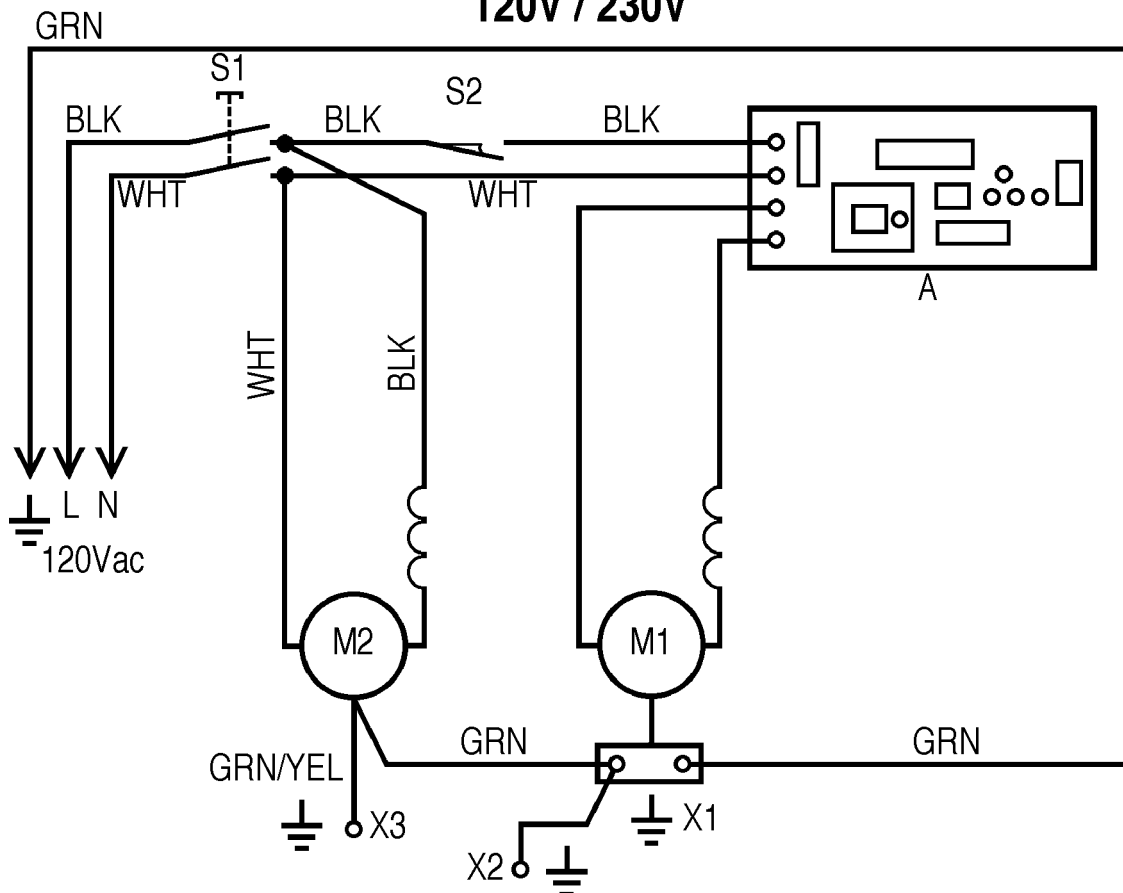


Item	Ref. No.	Qty	Description	Item	Ref. No.	Qty	Description
	56323782	1	Base Assy Twin 20XP-120V	35	56326934	1	Shoe
	56323795	1	Shroud Assembly (#1-6)	36	56009012	6	Scr, Hex Thd Form 10-24 x .38
1	56323796	1	Shroud	37	56330745	4'	Gasket (122 cm)
2	56014369	1	Decal, Warning	38	56328855	4	Spring Nut
3	56015980	1	Decal, Wiring	39	56327657	1	Axle Lever
4	56016484	1	Decal, Carpetwin 20	40	56330642	1	Spring
5	56023290	1	Decal, Brush Adjustment	41	56329105	2	Bearing
6	56326992	1	Bumper	42	56003262	6	Ring, Ret Ext Type E
7	56328561	1	Latch	43	56002063	3	Wsh, Flt SAE 3/8
8	56009051	3	Scr, Pan Phil Thd Form 8-32 x .38	44	56328058	1	Cam
9	56009082	4	Scr, Pan Phil Thd Form 10-24 x .50	45	56002797	2	Scr, Pan Phil 5/16-18 x 1.75
10	56023288	1	Decal, Knob Adjustment	46	56327530	2	Wheel
11	56324502	1	Knob	47	56002826	2	Nut, Hex Nyl Loc-Thin 5/16-18
12	56002160	1	Scr, Set Soc Hd 8-32 x .38	48	56900238	2	Screw
13	56323203	1	Hose	49	56328790	1	Spring
14	56323176	1	Baffle	50	56163015	1	Strain Relief
15	56328707	1	Pin .25 x 1.875	51	56323808	1	Cord
16	56329145	1	Clamp, Hose SAE #24	*	56478246	6	Cable Tie
17	56238160	1	Brush Motor	52	56754199	1	Strain Relief
*	56323809	1	Cord Assy.	53	56002670	2	Scr, Pan Hd Phil 6-32 x 1.50
*	56245234	1	Wire, Ground	54	56327450	1	Switch
18	56002701	6	Nut, Hex Nyl Loc 5/16-18	*	56323807	1	Cord Set
19	56001841	1	Scr, Set Soc Hd 1/4-20 x .25	*	56481882	1	Wire Assy
20	56327478	1	Belt	55	56002006	2	Wsh, Flt SAE #6
21	56327131	1	Sheave	56	56009056	2	Wsh, Int Shprf #6
22	56002086	1	Scr, Set Soc Hd 5/16-18 x .25	57	56009008	2	Nut, Hex 6-32
23	56327607	1	Axle Bracket	58	56329054	2	Pin
24	56325227	2	Nut	59	56329098	4	Bushing
*	56002098	2	Wsh, Flt SAE 1/4	60	56323130	1	Bushing
25	56009125	4	Wsh, Bowed	61	56323129	1	Torsion Spring
26	56323086	2	Wheel	62	56328562	1	Pedal
27	56327668	2	Axle Roller	63	56009042	1	Scr, Pan Phil Thd Form 10-24 x .62
28	56328758	1	Bushing	64	56328723	1	Bushing
29	56002273	2	Scr, Soc Hd 1/4-20 x .88	65	56003268	2	Ring, Ret E TY Ext Reinf
30	56151106	2	Bushing	66	56329177	1	Circuit Breaker 6 Amp
31	56323789	1	Base	67	56009112	1	Wsh, Int Shprf 3/8
32	56001939	10	Wsh, Flt SAE 5/16	68	56171541	1	Nut, Hex 3/8-27
33	56002035	4	Scr, Hex Hd 5/16-18 x .62				
34	56327272	1	Brush Assembly				
**	56327182	1	Pulley	* =	Not Shown		
**	56322420	2	Bearing Block	** =	Included in Brush Assembly 56327272		
**	56372773	2	Bearing				
**	56327255	1	Brush				
**	56327166	1	Tube				
**	56320153	1	Loading Spring				

16XP Wiring Diagram 100V



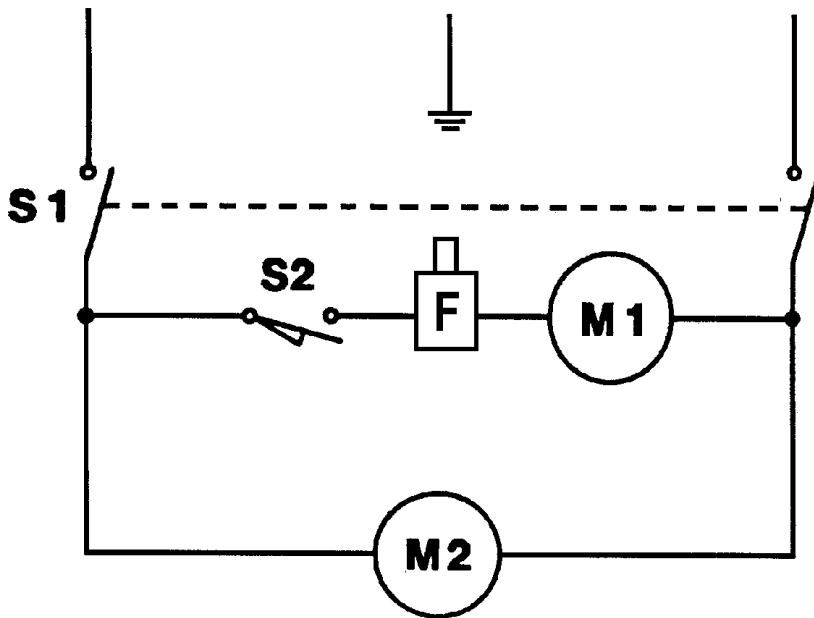
16XP Wiring Diagram 120V / 230V



97-12	WIRING DIAGRAMS (16XP)		
00-6	Carpetwin™ 16XP / 20XP		15

Item	Ref. No.	Qty	Description
100V			
S1	56207077	1	Main Switch
S2	56323271	1	Brush Motor Switch
M1	56323812	1	Brush Motor
*	56323097	1	Carbon Brush, Set (for 56323812)
M2	56323177	1	Vacuum Motor
*	56203518	1	Carbon Brush, Set (for 56323177)
120V / 230V			
A	56323348	1	Circuit Board
S1	56207077	1	Main Switch
S2	56323271	1	Brush Motor Switch
M1	56323802	1	Brush Motor (120V)
	56323826	1	Brush Motor (230V)
*	56323827	2	Carbon Brush for 56323802 / 56323826
M2	56323177	1	Vacuum Motor (120V)
*	56203518	1	Carbon Brush, Set (for 56323177)
	56323373	1	Vacuum Motor (230V)
*	56503017	1	Carbon Brush, Set (for 56323373)
X1			Motor Mount Ground
X2			Yoke Ground
X3			Cover Ground

20XP Wiring Diagram 120V



97-12	WIRING DIAGRAM (20XP)		
00-6	Carpetwin™ 16XP / 20XP		17

Item	Ref. No.	Qty	Description
			120V
S1	56207077	1	Main Switch
S2	56327450	1	Brush Motor Switch
F	56329177	1	Circuit Breaker, 6A
M1	56238160	1	Brush Motor
M2	56323177	1	Vacuum Motor
*	56203518	1	Carbon Brush, Set (for 56323177)



**Nilfisk
Advance**

setting standards

Nilfisk-Advance, Inc.

14600 21st Avenue North

Plymouth, MN, 55447-3408

www.nilfisk-advance.com

Phone: 800-989-2235

Fax: 800-989-6566

©2001 Nilfisk-Advance, Inc.,

Plymouth, MN 55447-3408

Printed in the U.S.A.