



# Electronic Service Manuals

This electronic document is provided as a service to our customers. We do not create the contents of the information contained in this document. Should you have detailed questions pertaining to the information contained in this document, you may contact Michco, or the manufacturer which provided the original information in this electronic deliverable. Michco's only part in this electronic deliverable was the electronic assembly process.

You may contact Michco through the following methods:  
Phone (517) 484-9312 or (800) 331-3339 MI, OH, IN only  
2011 N. High St. -- Lansing, Michigan -- 48906  
Fax: (517) 484-9836  
Email: [CustServ@Michco.com](mailto:CustServ@Michco.com)  
Web site: [www.Michco.Com](http://www.Michco.Com)  
Parts Web site: [www.FloorMachineParts.Com](http://www.FloorMachineParts.Com)

Order Parts on Line at:  
**[www.FloorMachineParts.Com](http://www.FloorMachineParts.Com)**

Directly to Parts & Service:  
By Email: **[Shop@Michco.com](mailto:Shop@Michco.com)**  
By Fax: (517) 702-2041  
By Voice: Use numbers above.

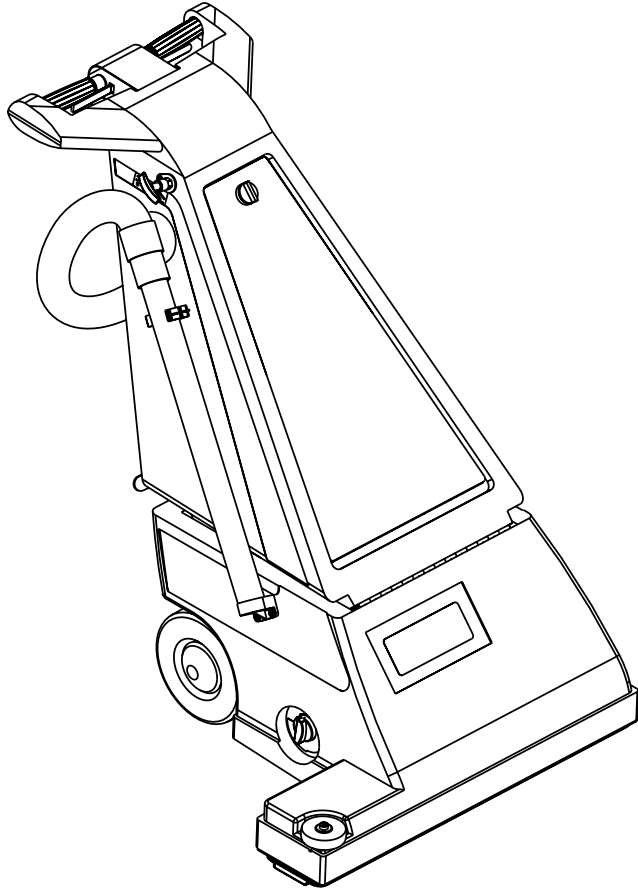
**Serving the Cleaning Industry Since 1922**

Notice: All copyrighted material remains property of original owners, all trademarks are property of respective owners. Manuals are subject to Manufacturer's reproduction limitations. Originals or reproductions were provided by manufacturers through a request. We make no warranty as to the correctness of information provided in this document and you assume all risk.

# **Carpetriever™ 28**

---

## **GU 700A**



### **PARTS LIST**

**Advance MODELS 56330020(120V), 56330925(OBS/100V)**

**Nilfisk MODELS 56330910(240V), 56330940(OBS/240V/Arg.)  
56330951(100V)**

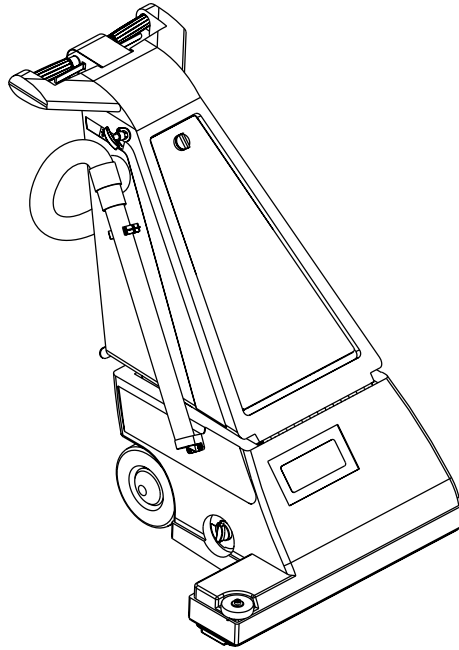


**Nilfisk  
Advance**

*setting standards*

11/99 revised 5/04 FORM NO. 56042384  
BOOK B SECTION 2.9.1





DESCRIPTION	PLAN
BASE SYSTEM .....	B-2.9.1-53
BRUSH MOTOR ASSEMBLY .....	B-2.9.1-55
DECAL SYSTEM .....	B-2.9.1-57
HANDLE SYSTEM-1 .....	B-2.9.1-59
HANDLE SYSTEM-2 .....	B-2.9.1-61
WIRING DIAGRAM - 240V .....	B-2.9.1-63
WIRING DIAGRAM - 120V .....	B-2.9.1-65
WIRING DIAGRAM - 100V .....	B-2.9.1-67

### WHEN ORDERING PARTS

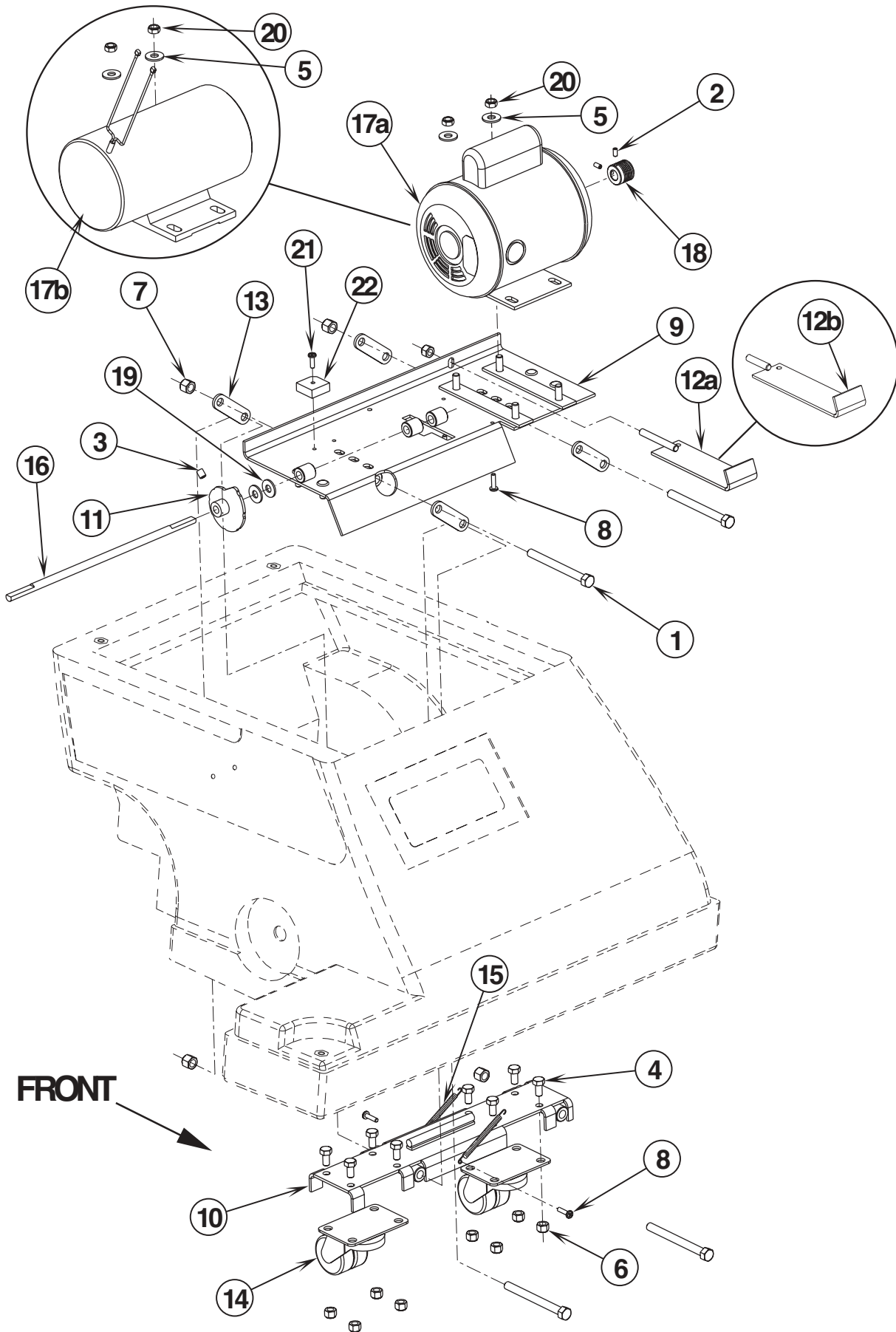
- \* Use the 8 digit numbers from the "Ref. No." columns in this parts list.
- \* Specify the model and serial number of the machine.
- \* Use the space below to record the model and serial number for future reference.

Model \_\_\_\_\_ Serial No. \_\_\_\_\_



99-11	<b>BASE SYSTEM</b>	<b>BOOK B</b>		
02-2	<b>Carpetriever™ 28 / GU 700A</b>	<b>B</b>	<b>2.9.1</b>	<b>53</b>

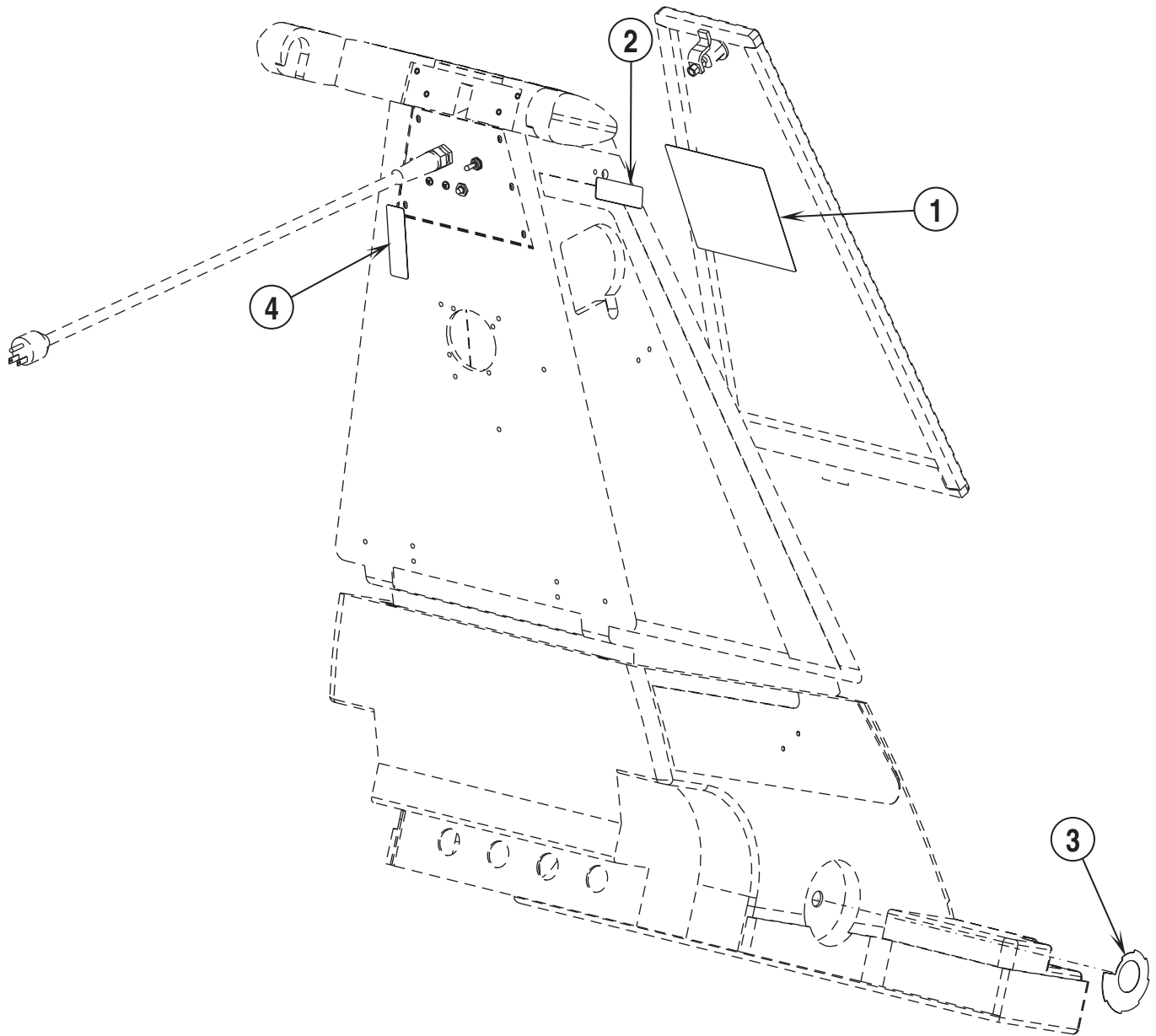
Item	Ref. No.	Qty	Description
1	56001954	4	Wsh, Flt SAE #10
2	56002098	4	Wsh, Flt SAE 1/4
3	56002145	4	Scr, Pan Phil 1/4-20 x .50
4	56002147	9	Scr, Pan Phil (UNF) 10-32 x .50
5	56002160	1	Scr, Soc Set Loc 8-32 x .38
6	56002220	4	Wsh, Flt STD 5/16
7	56002507	2	Scr, Pan Phil 1/4-20 x .75
8			<b>Intentionally Omitted</b>
9	56003472	1	Scr, Soc Shd .38 x 1.00 x 5/16-18
10	56002701	4	Nut, Hex Nyl Loc 5/16-18
11	56002733	2	Scr, Pan Phil 10-24 x .88
12	56002832	2	Nut, Hex Nyl Loc-Thin 10-24
13	56009024	1	Wsh, Bowed .375 x .844 x .060
14	56009030	1	Scr, Pan Phil Thd Form 10-24 x .38
15	56009003	2	Wsh, Flt .516 x .938 x .075 <b>TSB 798</b>
16			<b>Intentionally Omitted</b>
17	56002147	4	Scr, Pan Phil 10-32 x .50
18	56330045	1	Weldment, Axle <b>TSB 798</b>
19	56049261	1	Wheel
20	56052279	2	Foam Gasket Strip
21	56055033	1	Plate, Bottom
22	56055054	1	Gasket, Foam
23	56324502	1	Knob
24	56055187	2	Gasket, Foam
25	56055213	1	Hinge, Butt
26	56055217	1	Bracket, Intake Tube
27	56055123	1	Belt, V
28	56330904	1	Tank, Base ( <b>GU 700A</b> )
	56330010	1	Tank, Base ( <b>Carpetriever 28</b> )
29	56330011	1	Brush Housing Assembly ( <b>#45-49</b> ) <b>TSB 808</b>
30	56330901	1	Brush Motor Assembly ( <b>240V / see associated pages</b> )
	56330012	1	Brush Motor Assembly ( <b>120V / see associated pages</b> )
	56330927	1	Brush Motor Assembly ( <b>100V / see associated pages</b> )
31	56330015	1	Brush Assembly ( <b>#35-44</b> ) <b>TSB 808</b>
32	56331151	1	Holder, Tube
33	56009097	2	Nut, Push Cap 1/2 <b>TSB 798</b>
34	56210148	2	Wheel <b>TSB 798</b>
35	56001900	4	Scr, Flt Phil 10-24 x .75
36	56002956	1	Scr, Hex Hd Loc 5/16-18 x .75
37	56003235	1	Key, Sq. .12 x .44
38	56001939	1	Wsh, Flt SAE 5/16
39	56027222	2	Bearing, Ball
40	56055030	2	Mount, Bearing
41	56055126	1	Brush, Cylinder
42	56055127	1	Shaft, Brush
43	56330014	1	Shaft, Brush
44	56330914	1	Sheave, Poly V Belt
45	56002192	4	Scr, Pan Phil 10-24 x .75
46	56034673	1	Weldment, Brush Housing
47	56055121	1	Tube, Intake Machined
48	56055122	2	Gasket
49	56055615	1	Plate



99-11	<b>BRUSH MOTOR ASSEMBLY</b>	<b>BOOK B</b>		
02-4	<b>Carpetriever™ 28 / GU 700A</b>	<b>B</b>	<b>2.9.1</b>	<b>55</b>

Item	Ref. No.	Qty	Description
1	56001819	4	Scr, Hex Hd 3/8-16 x 4.00
2	56001823	2	Scr, Soc Set Loc 10-24 x .38
3	56002021	1	Scr, Soc Set Loc 5/16-18 x .38
4	56002035	8	Scr, Hex Hd 5/16-18 x .62
5	56002220	2	Wsh, Flt STD 5/16
6	56002701	9	Nut, Hex Nyl Loc 5/16-18
7	56002769	4	Nut, Hex Nyl Loc 3/8-16
8	56009043	4	Scr, Pan Phil Thd Form 10-24 x .75
9	56034675	1	Weldment, Bracket, Motor <b>(240V / 120V)</b>
	56330044	1	Weldment, Bracket, Motor <b>(100V)</b>
10	56034677	1	Caster Bracket Weldment
11	56034679	1	Weldment, Cam Height Adjustment
12a	56034691	1	Weldment, Adjustment Bracket <b>(240V / 120V)</b>
12b	56330934	1	Weldment, Adjustment Bracket <b>(100V)</b>
13	56055031	4	Steel, Bar
14	56055134	2	Caster, 2.00 Dia.
15	56055135	2	Spring
16	56055137	1	Shaft, Height Adjustment
17a	56330908	1	Motor, 1/3hp <b>(240V)</b>
	56330013	1	Motor, 1/3hp <b>(120V)</b>
*	56755056	1	Replacement Capacitor for 56330013
17b	56330926	1	Motor, 1/3hp <b>(100V)</b>
*	56330928	2	Brush, Carbon for 56330926
*	56330929	2	Brush, Spring for 56330926
*	56330930	2	Brush, Access Cover for 56330926
18	56330016	1	Sheave, Poly V Belt
19	56002220	2	Wsh, Flt STD 5/16 <b>(100V)</b>
20	56002826	2	Nut, Hex nyl Loc-Thin 5/16-18
21	56009042	1	Scr, Pan Phil Thd Form 10-24 x .62 <b>(100V)</b>
22	56180163	1	Rectifier, 40 Amp <b>(100V)</b>

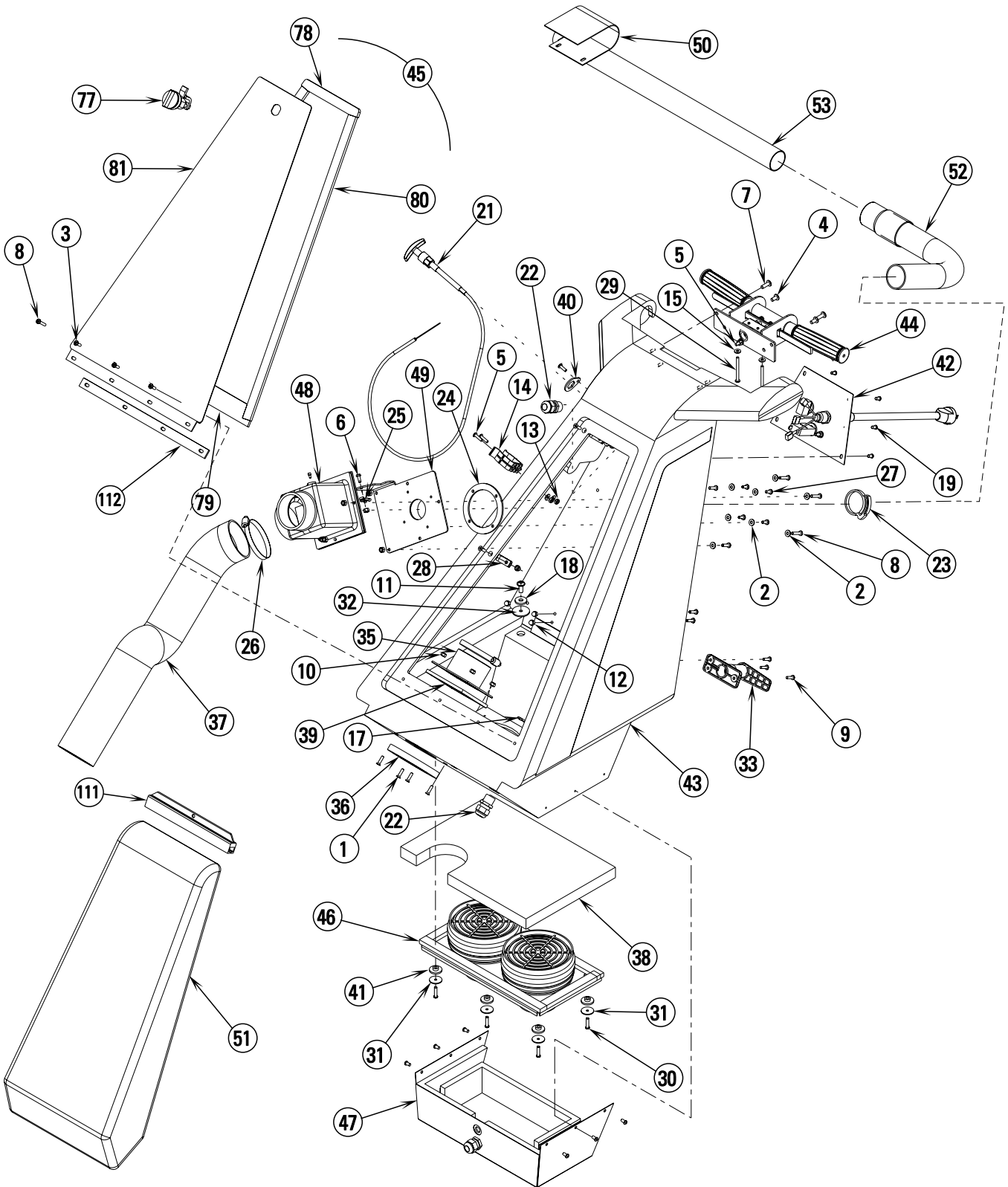
\* = Not Shown



99-11	<b>DECAL SYSTEM</b>	<b>BOOK B</b>		
01-2	<b>Carpetriever™ 28 / GU 700A</b>	<b>B</b>	<b>2.9.1</b>	<b>57</b>

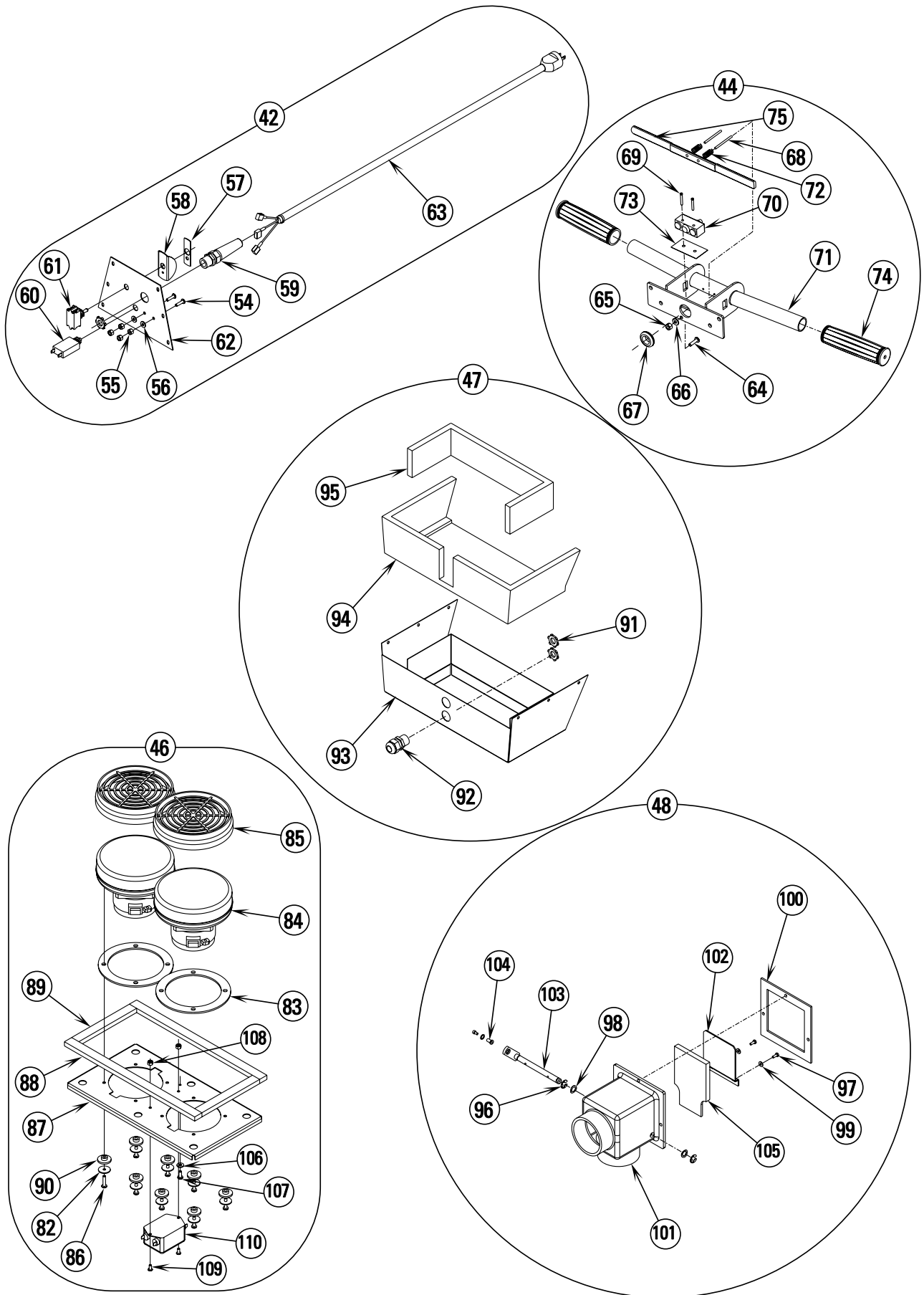
Item	Ref. No.	Qty	Description
1	56016433	1	Decal, Wiring (240V)
	56016472	1	Decal, Wiring (120V)
	56016308	1	Decal, Wiring (100V)
2	56016475	1	Decal, Wand
3	56057686	1	Label, Height Adjust
4	56630714	1	Label, Warning (120V / 100V)
*	56014119	6	Decal, Ground Symbol

\* = Not Shown



99-11	<b>HANDLE SYSTEM-1</b>	<b>BOOK B</b>		
04-5	<b>Carpetriever™ 28 / GU 700A</b>	<b>B</b>	<b>2.9.1</b>	<b>59</b>

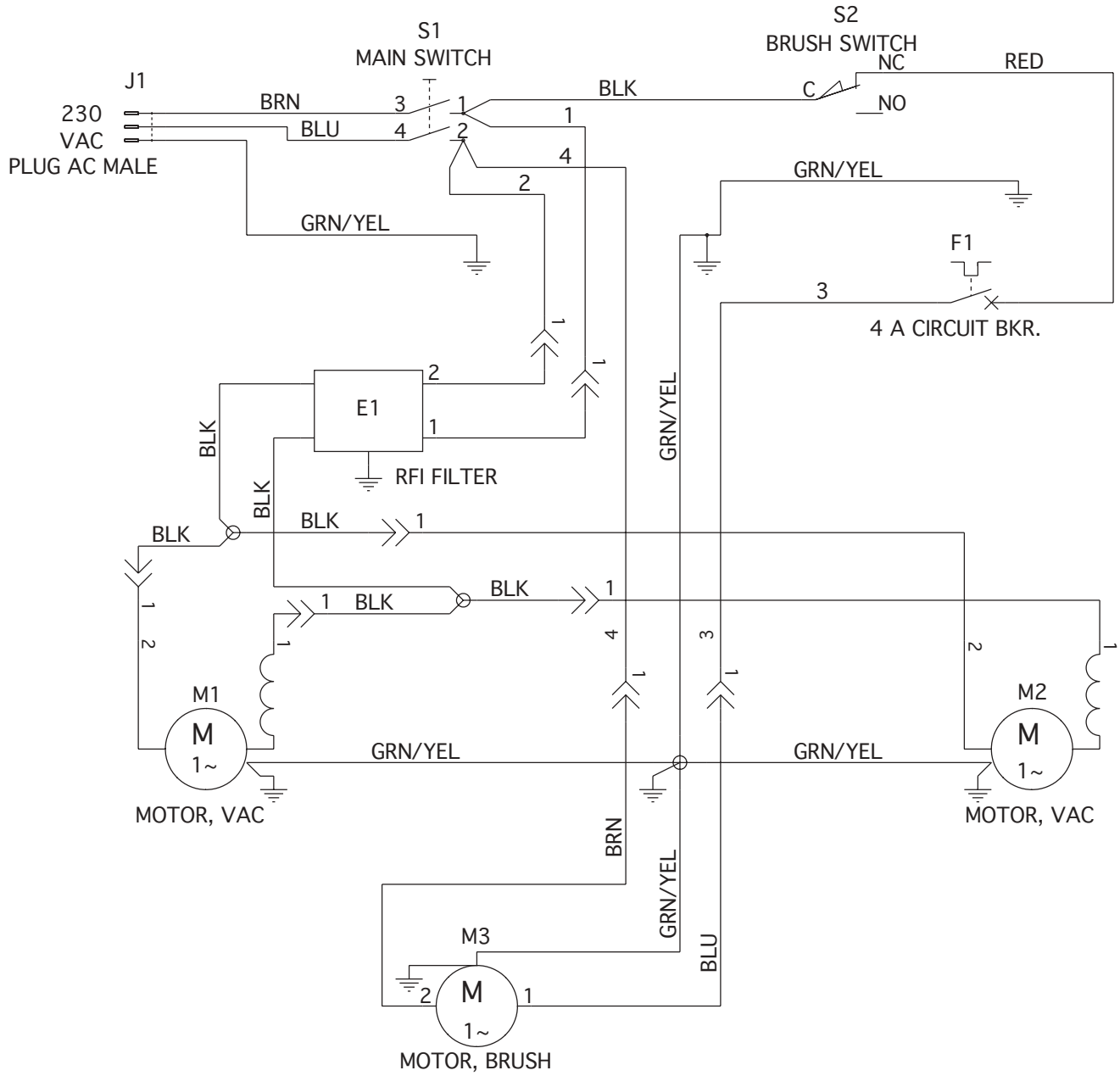
Item	Ref. No.	Qty	Description
1	56001900	6	Scr, Flt Phil 10-24 x .75
2	56001954	11	Wsh, Flt SAE #10
3	56002124	3	Scr, Pan Phil 10-24 x .62
4	56002145	2	Scr, Pan Phil 1/4-20 x .50
5	56002192	4	Scr, Pan Phil 10-24 x .75
6	56002503	1	Scr, Hex Hd 10-24 x .50
7	56002507	2	Scr, Pan Phil 1/4-20 x .75
8	56002674	4	Scr, Pan Phil 10-24 x 1.00
9	56001993	6	Scr, Pan Phil 10-24 x 1.00
10	56002768	17	Nut, Hex Nyl Loc 10-24
11	56002793	2	Scr, Pan Phil 5/16-18 x .75
12	56009061	6	Nut, Acorn SS 10 x 24
13	56002832	2	Nut, Hex Nyl Loc-Thin 10-24
14	56331154	1	Clamp, Plastic
15	56009011	2	Wsh, Int SHPRF #10
17	56009095	2	Nut, Conduit Lock 1/2-14
18	56009122	2	Wsh, Flt .344 x .938 x .125
19	56009247	12	Scr, Pan Phil Plastite 10-14 x .38
21	56331349	1	Control Cable
22	56323135	2	Strain Relief
23	56331304	1	Clamp, Hose
24	56330909	1	Gasket
25	56344265	1	Clamp, Cable
26	56352829	2	Clamp, Hose SAE #52
27	56009029	4	Scr, Pan Phil Thd Form 10-24 x .50
28	56385564	3	Clamp, P
29	56003503	2	Scr, Pan Phil 10-24 x 2.25
30	56003504	6	Scr, Pan Phil Plastite 10-14 x .88
31	56009268	6	Wsh, Flt .187 x 1.00 x .062
32	56009275	2	Washer, Neoprene
33	56171112	2	Cord Hook Assy
35	56034690	1	Weldment, Hose Connector
36	56055054	1	Gasket, Foam
37	56055081	1	Hose, Vac
38	56055084	1	Guard, Bag
39	56055182	1	Gasket, Foam
40	56330921	1	Plate
41	56111384	6	Rubber Bushing
42	56330902	1	Electrical Assy (#54-63) (240V)
	56330941	1	Electrical Assy, Argentina (#54-63) (240V / Arg)
	56330918	1	Electrical Assy (#54-63) (120V)
	56330932	1	Electrical Assy (#54-63) (100V)
43	56330003	1	Tank, Upper Machined
44	56330005	1	Handle Assembly (#64-75)
45	56330006	1	Door Assembly (#77-81)
46	56330903	1	Vacuum Motor Assy (240V) (#82-90, 106-110)
	56330007	1	Vacuum Motor Assy (120V) (#82-90, 106-109)
	56330937	1	Vacuum Motor Assy (100V) (#82-90, 106-109)
47	56330008	1	Muffler Assembly (#91-95)
48	56330018	1	Butterfly Assembly (#96-105)
49	56330021	1	Tube Weldment
50	56639107	1	Switchbox Cover Weldment
51	56330589	1	Bag, Collector Cloth
52	56331152	1	Hose Assy
53	56331153	1	Wand
111	56330608	1	Bag Clip for 56330589
*	56330690	1	Paper Bag (package of 6 / optional)
112	56055218	1	Gasket, Foam



99-11	<b>HANDLE SYSTEM-2</b>	<b>BOOK B</b>		
04-5	<b>Carpetriever™ 28 / GU 700A</b>	<b>B</b>	<b>2.9.1</b>	<b>61</b>

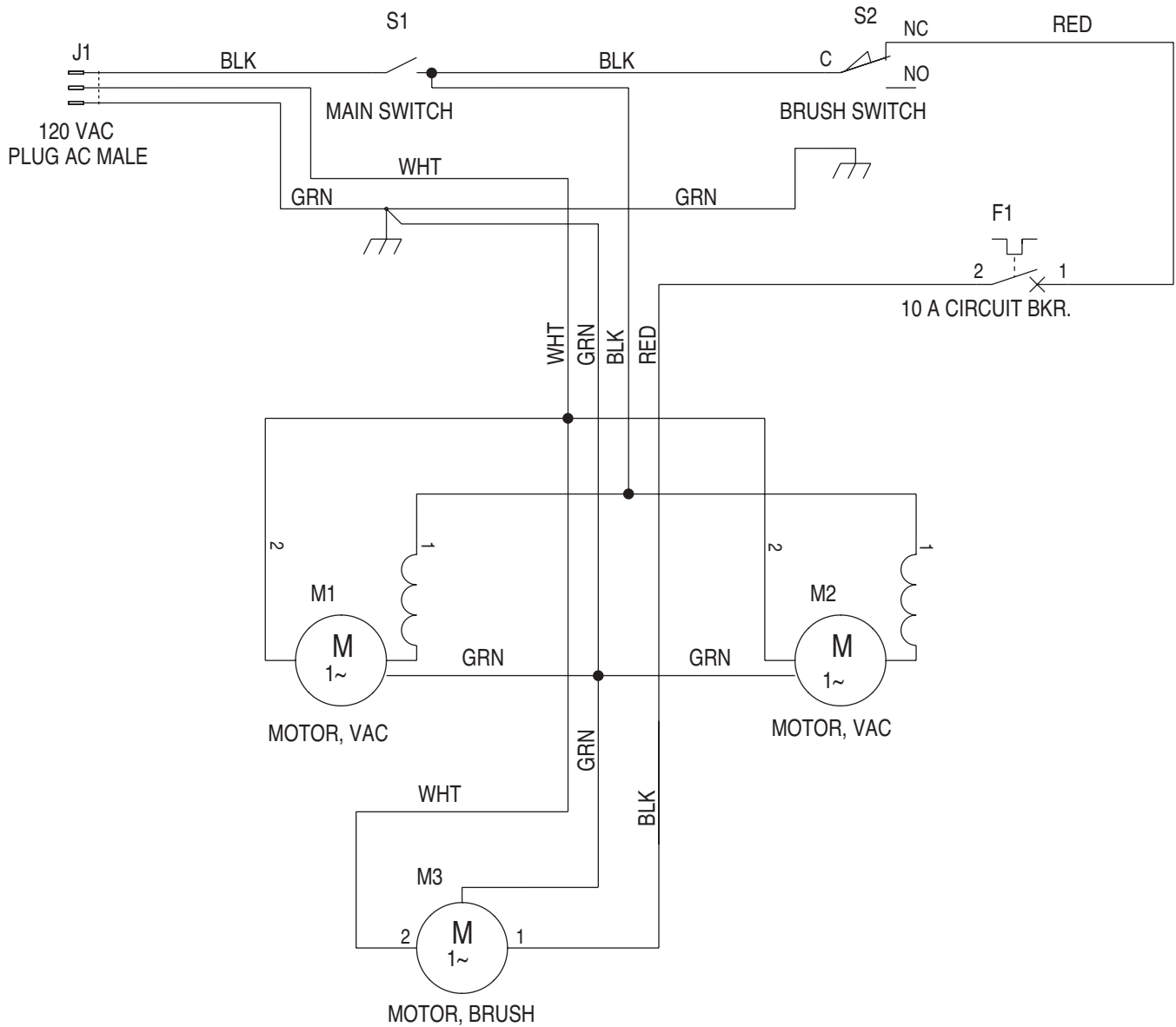
Item	Ref. No.	Qty	Description	Item	Ref. No.	Qty	Description
42	56330902	1	Electrical Assy (#54-63) (240V)	86	56003505	8	Scr, Pan Phil Thd Form 10-24 x .88
	56330941	1	Electrical Assy, Argentina (#54-63) (240V / Arg)	87	56055023	1	Plate, Mount Vac Motors
	56330918	1	Electrical Assy (#54-63) (120V)	88	56055041	2	Gasket, Foam
	56330932	1	Electrical Assy (#54-63) (100V)	89	56055042	2	Gasket, Foam
44	56330005	1	Handle Assembly (#64-75)	90	56111384	8	Rubber Bushing
46	56330903	1	Vacuum Motor Assy (240V) (#82-90, 106-110)	91	56009095	2	Nut, Conduit Lock 1/2-14
	56330007	1	Vacuum Motor Assy (120V) (#82-90, 106-109)	92	56323135	2	Strain Relief
	56330937	1	Vacuum Motor Assy (100V) (#82-90, 106-109)	93	56034668	1	Weldment, Muffler
47	56330008	1	Muffler Assembly (#91-95)	94	56055117	1	Gasket, Foam
48	56330018	1	Butterfly Assembly (#96-105)	95	56055118	1	Gasket, Foam
				96	56003269	2	Ring, Ret Ext Type E Reinf. .38 Dia.
54	56002192	2	Scr, Pan Phil 10-24 x .75	97	56009032	2	Scr, Hex Thd Form 6-32 x .38
55	56009009	4	Nut, Hex Machine 10-24	98	56009045	2	Wsh, Bowed .375 x .578 x .060
56	56009011	2	Wsh, Int SHPRF #10	99	56009056	2	Wsh, Int SHPRF #6
57	56014016	1	Decal, On/Off (100V / 240V)	100	56331312	1	Gasket
58	56200352	1	Guard Switch (100V / 240V)	101	56331313	1	Housing
59	56323136	1	Strain Relief	102	56331345	1	Plate
*	56009095	1	Nut, Conduit Lock 1/2-14	103	56331356	1	Lever Weldment
60	56387562	1	Circuit Breaker, 4 Amp (240V)	104	56442445	1	Swivel Wire
	56387316	1	Circuit Breaker, 10 Amp (100V / 120V)	105	56331155	1	Seal
61	56301636	1	Switch, Toggle (100V / 240V)	106	56009011	1	Wsh, Int SHPRF #10 (3 on 100V)
	56026973	1	Switch, Toggle (120V)	107	56009029	1	Scr, Pan Phil Thd Form 10-24 x .50
62	56643059	1	Cover, Access	108	56002808	2	Nut, Hex Nyl Loc 8-32
63	56330907	1	Power Cord (240V)	109	56001818	2	Scr, Pan Phil 8-32 x .38
	56330030	1	Power Cord, Argentina (240V / Arg)	110	56330923	1	RFI Filter
	56637610	1	Cord Set (120V)	*	56244138	4	Receptacle Tab, .250
*	56330042	1	Power Cord (100V)				
64	56002192	1	Scr, Pan Phil 10-24 x .75				
65	56009009	1	Nut, Hex Machine 10-24				
66	56009011	1	Wsh, Int SHPRF #10				
67	56497610	1	Grommet				
68	56003502	2	Pin				
69	56002857	2	Scr, Pan Phil 6-32 x .88				
70	56026412	1	Switch, Push				
71	56034663	1	Weldment, Handle				
72	56046648	2	Spring				
73	56046653	1	Insulation Paper				
74	56047418	2	Handle Grip				
75	56050274	1	Trigger				
77	56055050	1	Latch, Twist				
78	56055051	1	Gasket, Foam				
79	56055052	1	Gasket, Foam				
80	56055053	2	Gasket				
81	56639110	1	Weldment, Door				
82	56009096	8	Wsh, Flt .193 x .875 x .060				
83	56209325	2	Gasket				
84	56300411	2	Vacuum Motor (240V)				
	56325096	2	Vacuum Motor (120V)				
	56330389	2	Vacuum Motor (100V)				
*	56203518	2	Carbon Brush Set for 56300411, 56325096 & 56330389				
*	56009030	2	Scr, Pan phil Thd Form 10-24 x .38 (100V)				
85	56384898	2	Filter				
**	56330920	1	MicroStat Filter (pkg of 2)				

\* = Not Shown  
\*\* = Optional



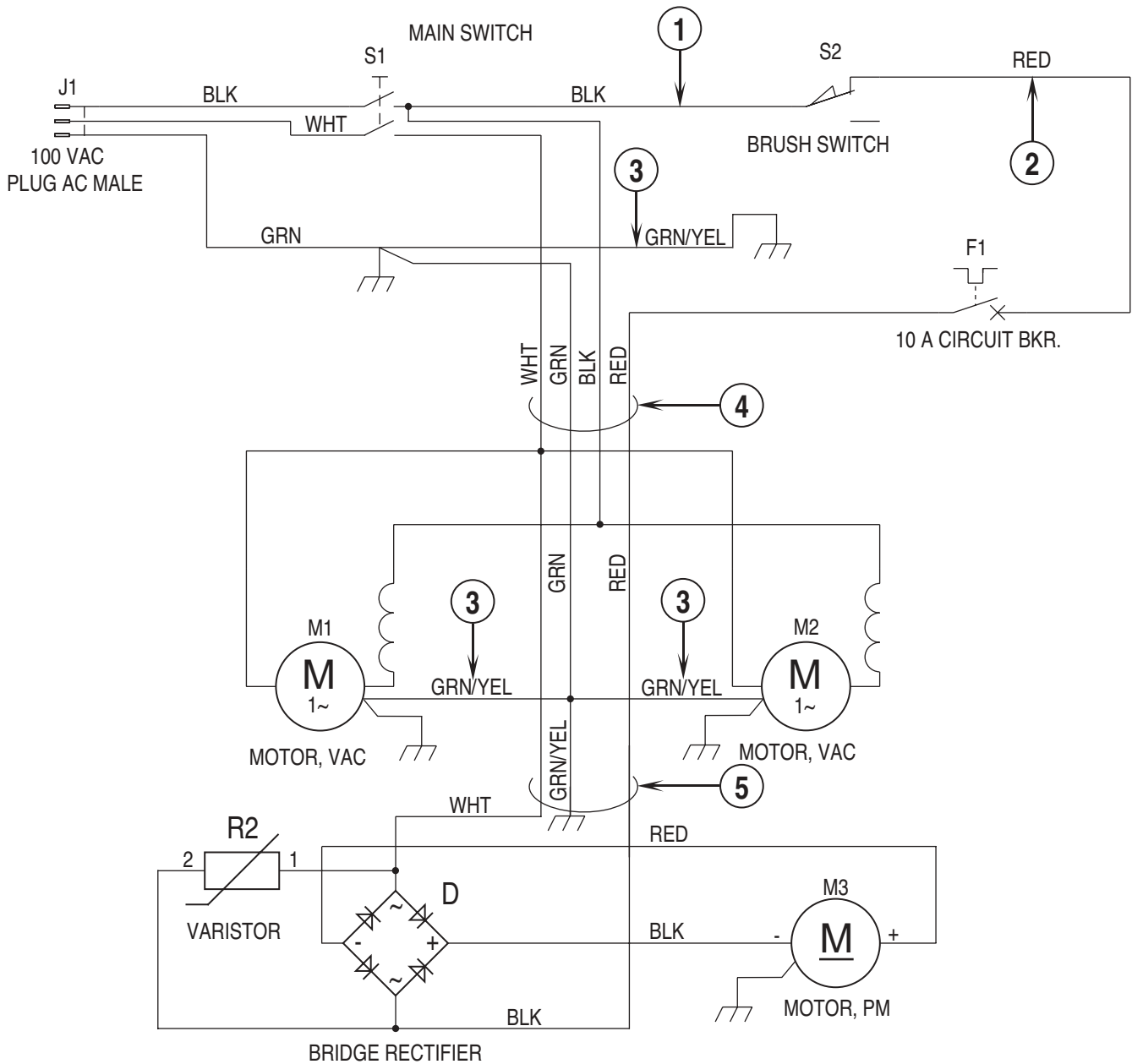
99-11	<b>WIRING DIAGRAM - 240V</b>	<b>BOOK B</b>		
01-1	<b>Carpetriever™ 28 / GU 700A</b>	<b>B</b>	<b>2.9.1</b>	<b>63</b>

Item	Ref. No.	Qty	Description
E1	56330923	1	RFI Filter
F1	56387562	1	Circuit Breaker, 4 Amp
J1	56330907	1	Power Cord (240V)
	56330030	1	Power Cord, Argentina (240V / Arg)
M1	56300411	1	Vacuum Motor
*	56203518	2	Carbon Brush Set for 56300411
M2	56300411	1	Vacuum Motor
*	56203518	2	Carbon Brush Set for 56300411
M3	56330908	1	Brush Motor, 1/3hp
S1	56301636	1	Main Switch
S2	56026412	1	Brush Switch



99-11	<b>WIRING DIAGRAM - 120V</b>	<b>BOOK B</b>		
01-1	<b>Carpetriever™ 28 / GU 700A</b>	<b>B</b>	<b>2.9.1</b>	<b>65</b>

Item	Ref. No.	Qty	Description
F1	56387316	1	Circuit Breaker, 10 Amp
J1	56637610	1	Cord Set, 120V
M1	56325096	1	Vacuum Motor
*	56203518	2	Carbon Brush Set for 56325096
M2	56325096	1	Vacuum Motor
*	56203518	2	Carbon Brush Set for 56325096
M3	56330013	1	Brush Motor, 1/3hp
*	56755056	1	Replacement Capacitor for 56330013
S1	56026973	1	Main Switch
S2	56026412	1	Brush Switch



99-11	<b>WIRING DIAGRAM - 100V</b>	<b>BOOK B</b>		
02-11	<b>Carpetriever™ 28 / GU 700A</b>	<b>B</b>	<b>2.9.1</b>	<b>67</b>

Item	Ref. No.	Qty	Description
F1	56387316	1	Circuit Breaker, 10 Amp
J1	56330042	1	Power Cord, 100V
M1	56330389	1	Vacuum Motor
*	56203518	2	Carbon Brush Set for 56330389
M2	56330389	1	Vacuum Motor
*	56203518	2	Carbon Brush Set for 56330389
M3	56330926	1	Brush Motor, 1/3hp
*	56330928	2	Carbon Brush Set for 56330926
*	56330929	2	Brush, Spring for 56330926
*	56330930	2	Brush, Access Cover for 56330926
R2	56387554	1	Varistor Assembly
S1	56301636	1	Main Switch
S2	56026412	1	Brush Switch
1	56025902	1	Wire, Ring/Piggy Back terminal ( <b>Carpetriever 28</b> )
	56330911	1	Wire, Ring/Piggy Back terminal ( <b>GU 700A</b> )
2	56025648	1	Wire, Ring/Female Receptacle
3	56250150	3	Wire, Ring/Ring
4	56330017	1	Cord Assembly 14-4 ( <b>Carpetriever 28</b> )
	56330043	1	Cord Assembly 14-4 ( <b>GU 700A 100V</b> )
	56330913	1	Cord Assembly, 5 x 75 ( <b>GU700A 240V</b> )
5	56025903	1	Cable, Electric ( <b>100V, 120V</b> )
	56330912	1	Cable, Electric ( <b>240V</b> )
*	56163228	3	Connector, Wire





---

**Austria (Sales Sub)**

Nilfisk-Advance GmbH	Phone: +43
Voralberger Allee 46	1616 58 30 22
A-1230 Wien	Fax: +43
<a href="mailto:info@nilfisk-advance.at">info@nilfisk-advance.at</a>	1616 58 30 40
<a href="http://www.nilfisk-advance.at">www.nilfisk-advance.at</a>	

---

**Belgium (Sales Sub)**

Nilfisk-Advance NV/SA	Phone: +32
Doornveld Sphere Business Park	(0)2467 60 50
Industrie Asse 3, No. 11	Fax: +32
B-1731 Zellik-Asse	(0)2463 44 16
<a href="http://www.nilfisk-advance.be">www.nilfisk-advance.be</a>	

---

**Czech Republic (Sales Sub)**

Nilfisk-Advance s.r.o.	Phone: +420
Lysinská 44/1863	2 44 09 09 12
143 00 Praha - Modrany	+420
Czech Republic	2 44 09 09 21 4
	Fax: +420
	2 44 40 23 93

---

**Denmark**

Nilfisk-Advance A/S	Phone: +45
Sognevej 25	43 23 81 00
DK-2605 Brøndby	Fax: +45
<a href="mailto:mail@nilfisk-advance.dk">mail@nilfisk-advance.dk</a>	43 43 77 00
<a href="http://www.nilfisk-advance.com">www.nilfisk-advance.com</a>	

---

**Denmark (Prod. Sub)**

Gerni A/S	Phone: +45
Myntevej 2	89 12 22 00
DK-8900 Randers	Fax: +45
<a href="http://www.gerni.com">www.gerni.com</a>	86 43 14 81

---

**Denmark (Sales Sub)**

Nilfisk-Advance Nordic A/S	Phone: +45
Sognevej 25A	43 23 40 50
Postbox 344	Fax: +45
DK-2605 Brøndby	43 23 40 60
<a href="mailto:kundeservice@nilfisk-advance.dk">kundeservice@nilfisk-advance.dk</a>	
<a href="http://www.nilfisk-advance.dk">www.nilfisk-advance.dk</a>	

---

**France (Sales Sub)**

Nilfisk-Advance S.A.	Phone: +33
27 avenue de la Baltique	1695 98 700
Villebon sur Yvette	Fax: +33
P.B. 246	1695 98 701
F-91944 Courtaboeuf Cedex	
<a href="mailto:info@nilfisk-advance.fr">info@nilfisk-advance.fr</a>	
<a href="http://www.nilfisk-advance.fr">www.nilfisk-advance.fr</a>	

---

**Germany (Sales Sub)**

Nilfisk-Advance AG	Phone: +49
Siemensstrasse 25-27	4101 3990
Postfach 1361	Fax: +49
D-25462 Rellingen	4101 39 91 91
<a href="mailto:info@nilfisk-advance.de">info@nilfisk-advance.de</a>	
<a href="http://www.nilfisk-advance.de">www.nilfisk-advance.de</a>	

---

**Greece (Sales Sub)**

Nilfisk-Advance A.E.	Tel.: +30
8, Thoukididou Str.	210 963 3443
Argioupoli	Fax: +30
Gr - 164 52 Athens	210 965 0975
Greece	

---

---

**Holland (Sales Sub)**

Nilfisk-Advance B.V.	Phone: +31
Camerastraat 9 (2e verdieping)	36 546 07 00
1322 BB Almere	Fax: +31
Postbus 60112	36 523 51 48
1320 AC Almere	
<a href="http://www.nilfisk-advance.nl">www.nilfisk-advance.nl</a>	

---

**Ireland (Sales Sub)**

Nilfisk-Advance Limited	Phone: +35
28 Sandyford Office Park	3 12 94 38 38
Sandyford, Dublin 18	Fax: +35
Ireland	3 12 94 38 45

---

**Italy (Prod & Sales Sub)**

CFM SpA	Phone: +39
Nilfisk-Advance Div. Guardamiglio	0377 /414021
Localita Novella III	/45 1124
I-26862 Guardamiglio (Mi)	Fax: +39
	0377 51 443

---

**Italy (Prod & Sales Sub)**

CFM S.p.A.	Phone: +39
Via Porrettana 1991	059 973 0000
I-41059 Zocca (Modena)	Fax: +39
<a href="mailto:cfm@cfm.it">cfm@cfm.it</a>	059 973 0099

---

**Norway (Sales Sub)**

Nilfisk-Advance AS	Phone: +47
Ulvenveien 89C	23 06 75 00
N-0581 Oslo	Fax: +47
	23 06 75 01

---

**Poland (Sales Sub)**

Nilfisk-Advance Sp.Z.O.O.	Phone: +48
05-800 Pruszków	22 738 37 50
ul. 3-go MAJA 8	Fax: +48
Poland	22 738 37 51

---

**Portugal (Sales Sub)**

Nilfisk-Advance, Lda.	Phone: +35
Sintra Business Park	121 911 2670
Zona Industrial Da Abrunheira	Fax: +35
Edificio 1, 1o A	121 911 2679
P-2710-089 Sintra	

---

**Russia (Sales Sub)**

Nilfisk-Advance LLC	Phone: 7
Vyatskaya str. 27, bld. 7	095 783 9602
127015 Moscow	Fax: +7
Russia	095 783 9603

---

**Spain (Sales Sub)**

Nilfisk-Advance S.A.	Phone: +34
Torre D'Ara	93 741 2400
Passeig del Rengle, 5 Pl.10	Fax: +34
E-08302 Mataró (Barcelona)	93 757 8020
<a href="mailto:nilfisk@nilfisk-advance.es">nilfisk@nilfisk-advance.es</a>	

---

**Sweden (Sales Sub)**

Nilfisk -Advance A/S	Phone: +46
Sjöbjörnsvägen 5	8555 94400
Box 44045	Fax: +46
S-100 73 Stockholm	8555 94430
<a href="mailto:info@nilfisk-advance.se">info@nilfisk-advance.se</a>	
<a href="http://www.nilfisk-advance.se">www.nilfisk-advance.se</a>	

---

---

**Sweden (Prod.)**

Nilfisk-Advance A/S	Phone: +46
Åmål Branch	5321 7500
Strömsbergsgatan	Fax: +46
Box 127	5321 7595
S-662 23 Åmål	

---

**Switzerland (Sales Sub)**

Nilfisk-Advance AG	Phone: +41
Ringsstrasse 19	71 92 38 444
Kirchberg/Industrie Stelzl	Fax: +41
CH-9500 Wil	71 92 35 283

[www.nilfisk-advance.ch](http://www.nilfisk-advance.ch)

---

**UK (Sales Sub)**

Nilfisk-Advance Limited	Phone: +44
Newmarket Road	1284 763163
Bury St. Edmunds	Fax: +44
UK-Suffolk IP33 3SR	1284 750 562

---

**USA (Prod.)**

Nilfisk-Advance Inc.	Phone: +1 763
14600 21.st Avenue North	745 3500
Plymouth, MN 55447-3408	Fax: +1 763
<a href="http://www.mn.nilfisk-advance.com">www.mn.nilfisk-advance.com</a>	745 3718

---

**USA (Sales Sub)**

Nilfisk-Advance America Inc.	Phone: +1 610
300 Technology Drive	647 6420
Malvern, PA 19355	Fax: +1 610
<a href="http://www.pa.nilfisk-advance.com">www.pa.nilfisk-advance.com</a>	647 6427

---

**Canada (Sales Sub)**

Nilfisk-Advance Canada Comp.	Phone: +1 905
396 Watline Avenue	712 3260
Mississauga, Ontario L4Z 1X2	Fax: +1 905
	712 3255

---

**Australia (Sales Sub)**

Nilfisk-Advance Pty. Ltd.	Phone: +61(0)2
48 Egerton Street	9648 2700
Silverwater, NSW 2128	Fax: +61(0)2
<i>Postal adresse:</i>	9648 2711
PO Box 6046	
Silverwater. NSW 1811	
<a href="mailto:info@nilfisk-advance.com.au">info@nilfisk-advance.com.au</a>	
<a href="http://www.nilfisk-advance.com.au">www.nilfisk-advance.com.au</a>	

---

**China (Shenzhen)**

Nilfisk-Advance (Shenzhen) Ltd	Phone: +86 755
Blok 3, Unit 130, 1001 Honghua Road	8359 7937 el.
Int. Commercial & Trade Center	8359 7939-42
Fuitian Free Trade Zone	Fax: +86 755
518038 <b>Shenzhen</b>	8359 1063
P.R. China	

---

**China (Suzhou)**

Nilfisk-Advance Professional	Phone: +86 512
Cleaning Equipment (Suzhou) Co. Ltd.	8918 5656
306 Su Hong Zhong Road, Build. 2	Fax: +86 512
Suzhou Industrial Park	8918 5666
215021 <b>Suzhou</b>	
P.R. China	

---

---

**Hong Kong (Sales Sub)**

Nilfisk-Advance Ltd.	Phone: +852
2001 HK Worsted Mills Ind'l Bldg.,	2427 5951
31-39 Wo Tong Tsui St.	Fax: +852
Kwai Chung, Hong Kong	2487 5828

---

**Japan (Sales Sub)**

Nilfisk-Advance Inc.	Phone: +8145
3-17-40-101 Chigasaki Higashi	942 7741
Tsuzuki-ku, Yokohama 224-0033	Fax: +8145
Japan	942 6545

---

**Malaysia (Sales Sub)**

Nilfisk-Advance Sdn Bhd	Phone: +60 3
No. 21, Jalan SS 25/41	7956 8188
Mayang Industrial Park	Fax: +60 3
47301 Petaling Jaya	7966 6828
Selangor, Malaysia	

---

**New Zealand (Sales Sub)**

Nilfisk-Advance Limited	Phone: +64(0)9
Danish House	525 0092
6 Rockridge Avenue	Fax: +64(0)9
Penrose 92-829	525 6440
Auckland1135	
<i>Postal adresse:</i>	
Private Bag 92 825	
Auckland	
New Zealand	

---

**Singapore (Sales Sub)**

Nilfisk-Advance Pte. Ltd.	Phone: + 65
22,Woodlands Industrial Park E1	6 7599100
Singapore 757740	Fax: +65
<a href="mailto:sales@nilfisk-advance.com.sg">sales@nilfisk-advance.com.sg</a>	7599133

---

**Taiwan, ROC (Sales Sub)**

Nilfisk-Advance Ltd.	Phone: +886
Taiwan Branch (H.K.)	2 2239 8812
1F, No. 193, Sec.2	Fax: +886
Xing Long Rd., Taipei	2 2239 8832
Taiwan, R.O.C.	

---

**Thailand (Sales Sub)**

Nilfisk-Advance Co. Ltd.	Phone: +66 2
89 Soi Chokechai-Ruammitr	275-5630
Viphavadee-Rangsit Road	Fax: +66 2
Ladyao, Jatuchak, Bangkok 10900	691-4079
Thailand	



[www.nilfisk-advance.com](http://www.nilfisk-advance.com)

© 2004 Printed in USA