



# Electronic Service Manuals

This electronic document is provided as a service to our customers. We do not create the contents of the information contained in this document. Should you have detailed questions pertaining to the information contained in this document, you may contact Michco, or the manufacturer which provided the original information in this electronic deliverable. Michco's only part in this electronic deliverable was the electronic assembly process.

You may contact Michco through the following methods:  
Phone (517) 484-9312 or (800) 331-3339 MI, OH, IN only  
2011 N. High St. -- Lansing, Michigan -- 48906  
Fax: (517) 484-9836  
Email: [CustServ@Michco.com](mailto:CustServ@Michco.com)  
Web site: [www.Michco.Com](http://www.Michco.Com)  
Parts Web site: [www.FloorMachineParts.Com](http://www.FloorMachineParts.Com)

Order Parts on Line at:  
**[www.FloorMachineParts.Com](http://www.FloorMachineParts.Com)**

Directly to Parts & Service:  
By Email: **[Shop@Michco.com](mailto:Shop@Michco.com)**  
By Fax: (517) 702-2041  
By Voice: Use numbers above.

**Serving the Cleaning Industry Since 1922**

Notice: All copyrighted material remains property of original owners, all trademarks are property of respective owners. Manuals are subject to Manufacturer's reproduction limitations. Originals or reproductions were provided by manufacturers through a request. We make no warranty as to the correctness of information provided in this document and you assume all risk.

# Sprite™ 8/12

# Sprite Air-Scoop™ 8/12



## **PARTS LIST**

**Advance Sprite™ MODELS 56209007, 56205886  
56210125, 56209005, 56209708**

**Advance Sprite Air-Scoop™ MODELS 56209006  
56209946, 56210126, 56209004, 56210114, 56210127**

**This parts list is for machines after serial number 554210  
All models covered in this manual are OBSOLETE**



**Nilfisk  
Advance**

*setting standards*



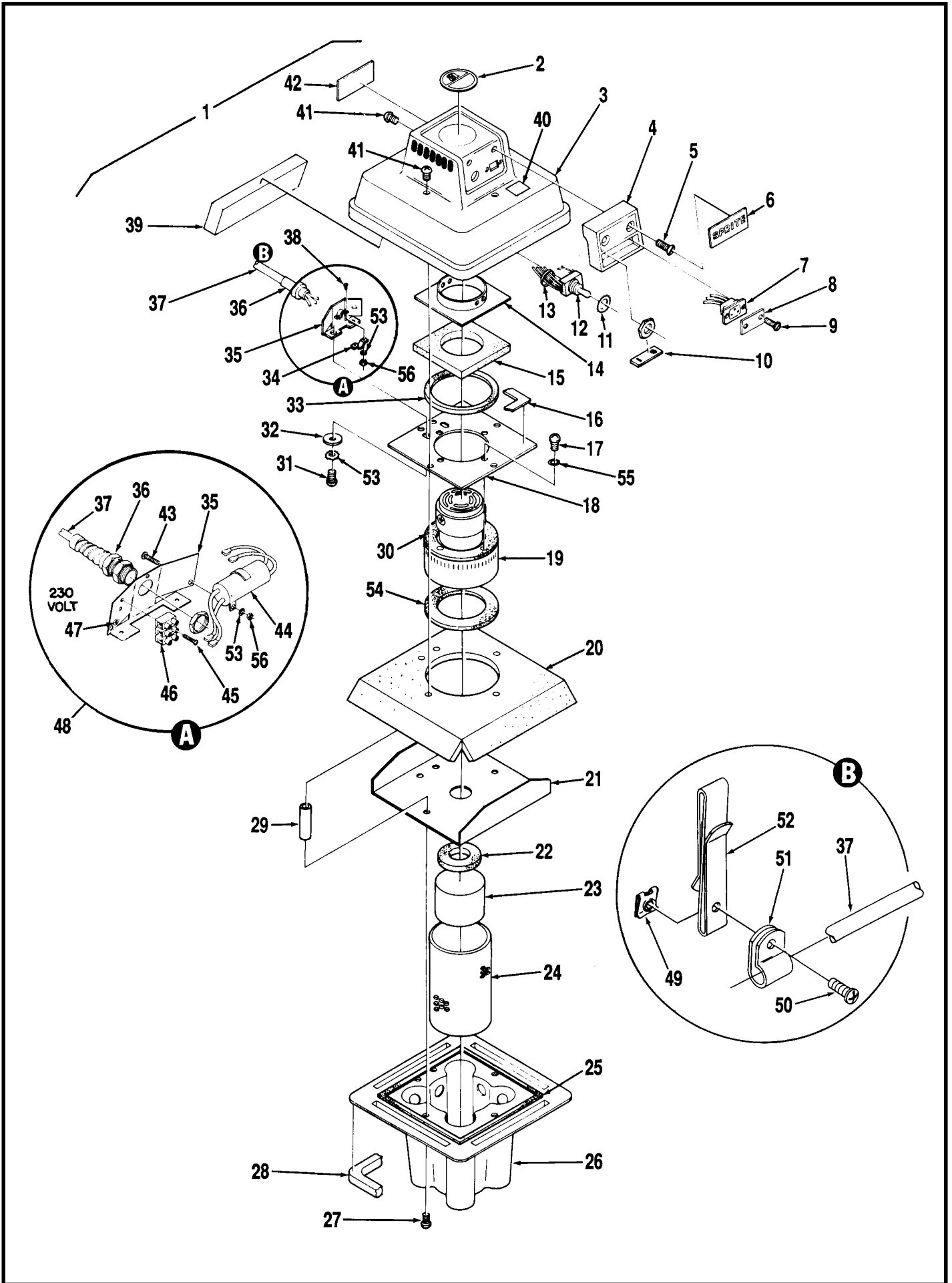
## TABLE OF CONTENTS

<u>DESCRIPTION</u>	<u>PAGE</u>
Power Head Assembly .....	1-2
Tank Assembly .....	3-4
Squeegee Assembly - Air Scoop .....	5-6
Wiring Diagram .....	7-8

### WHEN ORDERING PARTS

- \* Use the 8 digit numbers from the "Part No." columns in this parts list.
- \* Specify the model and serial number of the machine.
- \* Use the space below to record the model and serial number for future reference.

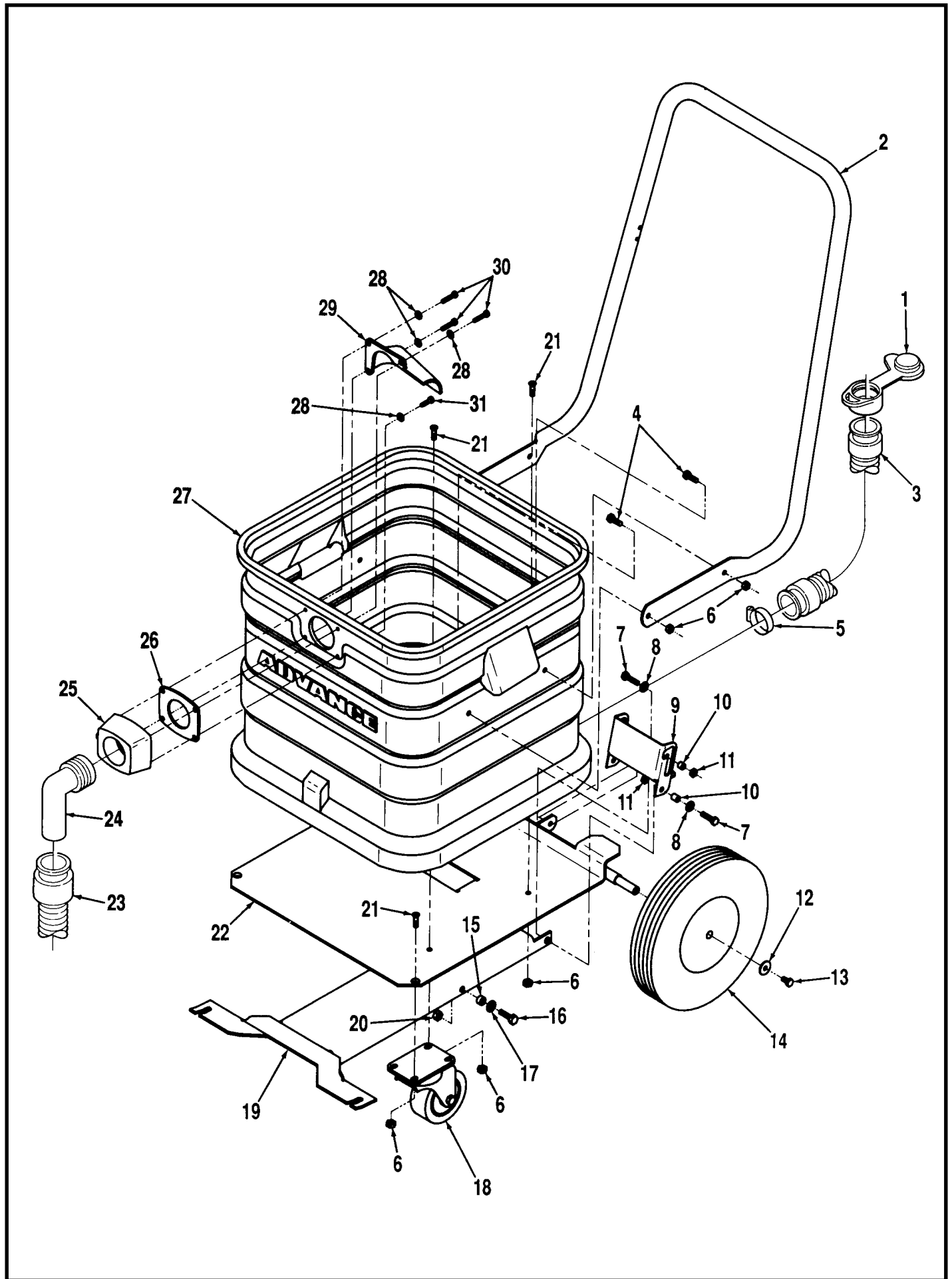
Model \_\_\_\_\_ Serial No. \_\_\_\_\_



## POWER HEAD ASSEMBLY

Item	Part No.	Qty	Description	Item	Part No.	Qty	Description
1	56210112	1	Powerhead 100V	29	56209440	5	Spacer
	56205837	1	Powerhead 115V	30	56209325	1	Gasket
	56205858	1	Powerhead 230V	31	56001818	2	#8-32 x 3/8 Screw
2	56014151	1	Decal, Logo 100V, 115V	32	56203874	2	Washer
	56015326	1	Decal, Logo 230V	33	56209981	1	Gasket 230V
3	56205839	1	Shroud	34	56300542	1	Cord Clamp 100V, 115V
4	56205841	1	Console	35	56209836	1	Bracket 100V, 115V
5	56002334	2	#10-24 x 1-3/8 Screw		56209873	1	Bracket 230V
**	56002768	2	#10-24 Nyl Loc Nut	36	56301396	1	Strain Relief 100V, 115V
6	56014148	1	Decal, Sprite		56323046	1	Strain Relief 230V
7	56209180	1	Receptacle Kit <b>NOTE</b>	37	56209627	1	Cord Set 100V
8	56209983	1	Cover		56570680	1	Cord Set 115V
9	56209828	2	Screw		56301309	1	Cord Set 230V
	56002808	6	#8-32 Nyl Loc Nut (#56)	38	56002524	2	#8-32 x 1/2 Screw 100V, 115V
10	56023224	1	Decal, On/Off	39	56209461	1	Filter
11	56001951	1	7/16 SHPF Washer	40	56015366	1	Decal, Power Outlet 100V, 115V
12	56207077	1	Switch 100V, 115V	41	56570220	6	Screw
	56301636	1	Switch 230V	42	56017023	1	Decal, Warning 100V
13	56325219	5	Cable Tie		56015084	1	Decal, Warning 115V
14	56209820	1	Ring Plate		56014204	1	Decal, Warning 230V
15	56209816	1	Foam	43	56001860	2	#8-32 x 3/4 Screw 230V
16	56200754	3'	Gasket (93 cm)	44	56387426	1	RFI Filter 230V
17	56002400	4	#10-16 x 5/8 HP-5 Screw	45	56002712	2	#4-40 x 5/8 Screw 230V
18	56209862	1	Plate	46	56183523	1	Terminal Block 230V
19	56209977	1	Vacuum Motor 100V, 115V	47	56014119	2	Decal, Ground 230V
	56202290	1	Vacuum Motor 230V	48	56209874	1	Harness Assembly 230V
*	56203518	1	Carbon Brush Set	49	56322504	1	#6-32 Spring Nut
*	56228051	2	Bearing	50	56002524	1	#8-32 x 1/2 Screw
*	56208191	2	Rotating Fan	51	56300152	1	Clamp
20	56209768	1	Sound Reducing Foam	52	56300187	1	Belt Clamp
21	56209766	1	Cover Plate	53	56001940	5	#8 SHPF Washer
22	56206128	1	Gasket	54	56209326	1	Gasket
23	56209571	1	Float	55	56002011	4	#10 SHPF Washer
24	56209566	1	Perforated Shield	56	56002808	6	#8-32 Nyl Loc Nut
25	56385248	5'	Gasket (1.5 m)				
26	56205845	1	Float Housing				* = Replacement Parts for Vacuum Motor
27	56209491	5	Screw				** = Not Shown
28	56209763	1	Gasket				

**NOTE:** This receptacle is an optional accessory.

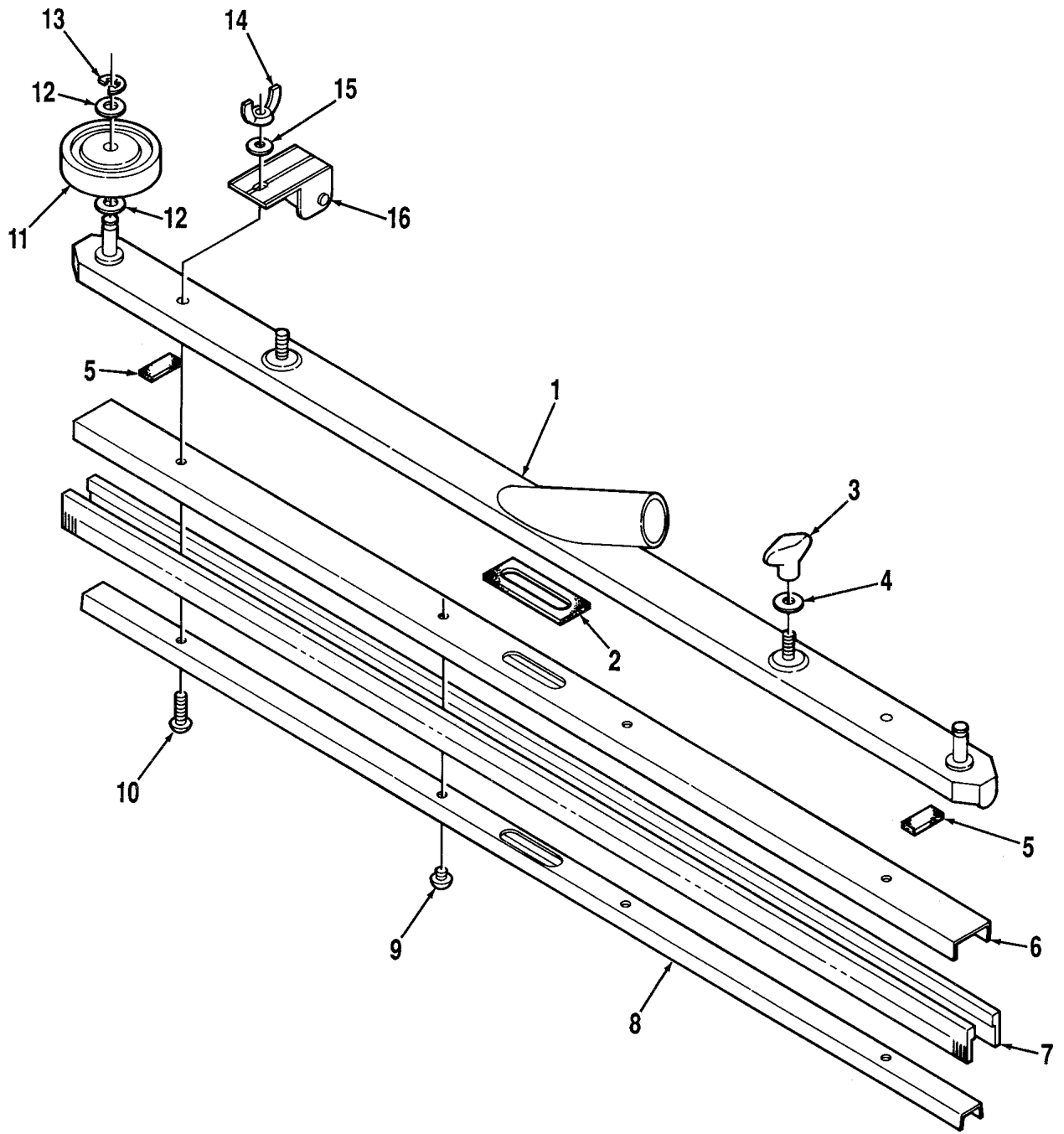


## TANK ASSEMBLY

Item	Part No.	Qty	Description
	56209044	1	Tank Assy Sprite Air Scoop 8
	56209043	1	Tank Assy Sprite Air Scoop 12
	56209045	1	Tank Assy Sprite 8
	56209042	1	Tank Assy Sprite 12
1	56324180	1	Drain Plug
*	56324349	1	Hook
2	56209015	1	Handle
3	56372222	1	Drain Hose
4	56002957	4	1/4-20 x 3/4 Stnlss Stl Screw
5	56131601	1	Hose Clamp
6	56002491	10	1/4-20 Stnlss Stl Nyl Loc Nut
7	56002893	4	1/4-20 x 1 Screw (Air Scoop)
8	56002098	4	1/4 Flt Washer (Air Scoop)
9	56209980	1	Pedal (Air Scoop)
10	56321532	4	Bushing (Air Scoop)
11	56002708	4	1/4-20 Nyl Loc Nut (Air Scoop)
12	56151114	2	Washer
13	56002729	2	1/4-20 x 1/2 Locking Screw
14	56249505	2	Wheel
15	56320595	2	Bushing (Air Scoop)
16	56002221	2	5/16-18 x 1 Bolt (Air Scoop)
17	56001939	2	5/16 Flt Washer (Air Scoop)
18	56340081	2	Caster
19	56209014	1	Squeegee Lift (Air Scoop)
20	56002701	2	5/16-18 Nyl Loc Nut (Air Scoop)
21	56002969	6	1/4-20 x 3/4 Stnlss Stl Screw
22	56209022	1	Cart
23	56209969	1	Squeegee Hose (Air Scoop)
24	56205821	1	Elbow, Hose Adapter (Air Scoop)
*	56301339	1	Straight, Hose Adapter (Sprite)
25	56205821	1	Connector
26	56201390	1	Gasket
27	56209041	1	Tank 8 Gallon
	56209039	1	Tank 12 Gallon
28	56249992	4	SS Flt Washer
29	56205829	1	Deflector
30	56209521	3	#10-16 x 1 Stnlss Stl Screw
31	56209519	1	#10-16 x 3/4 Stnlss Stl Screw

\* = Not Shown

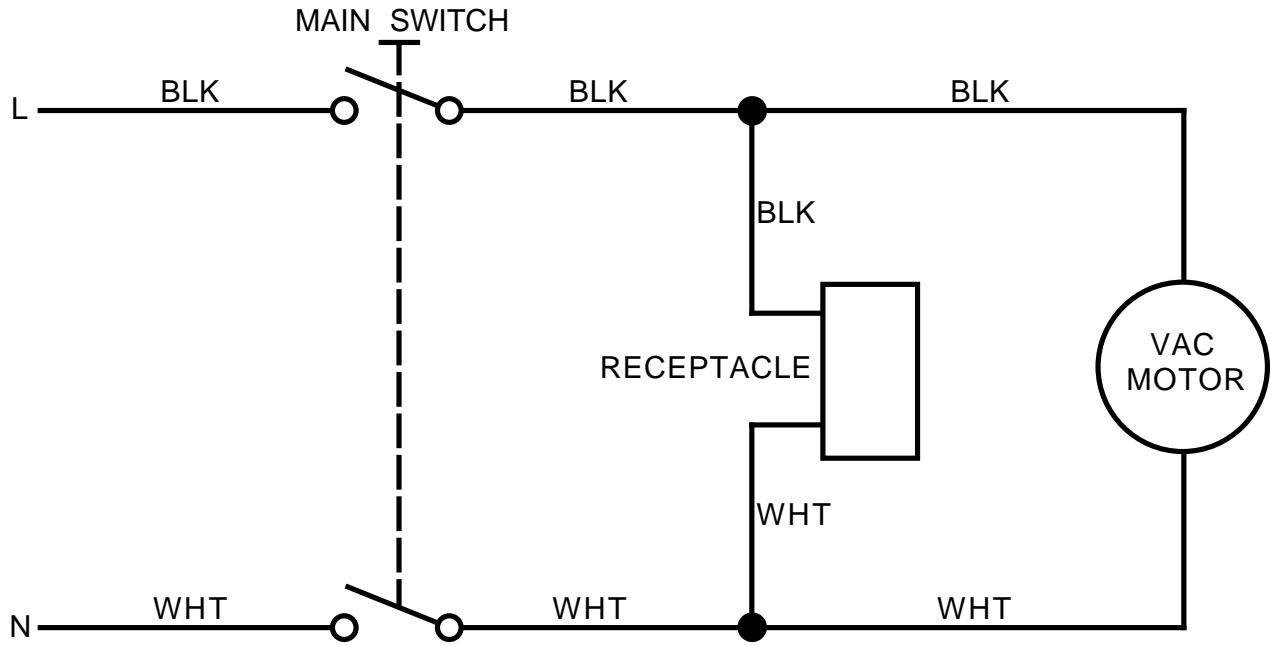
**NOTE:** Optional Air Scoop Kit PN 56209009 for field conversion of 8 / 12 gallon Sprites also includes all items on pages 5 & 6.



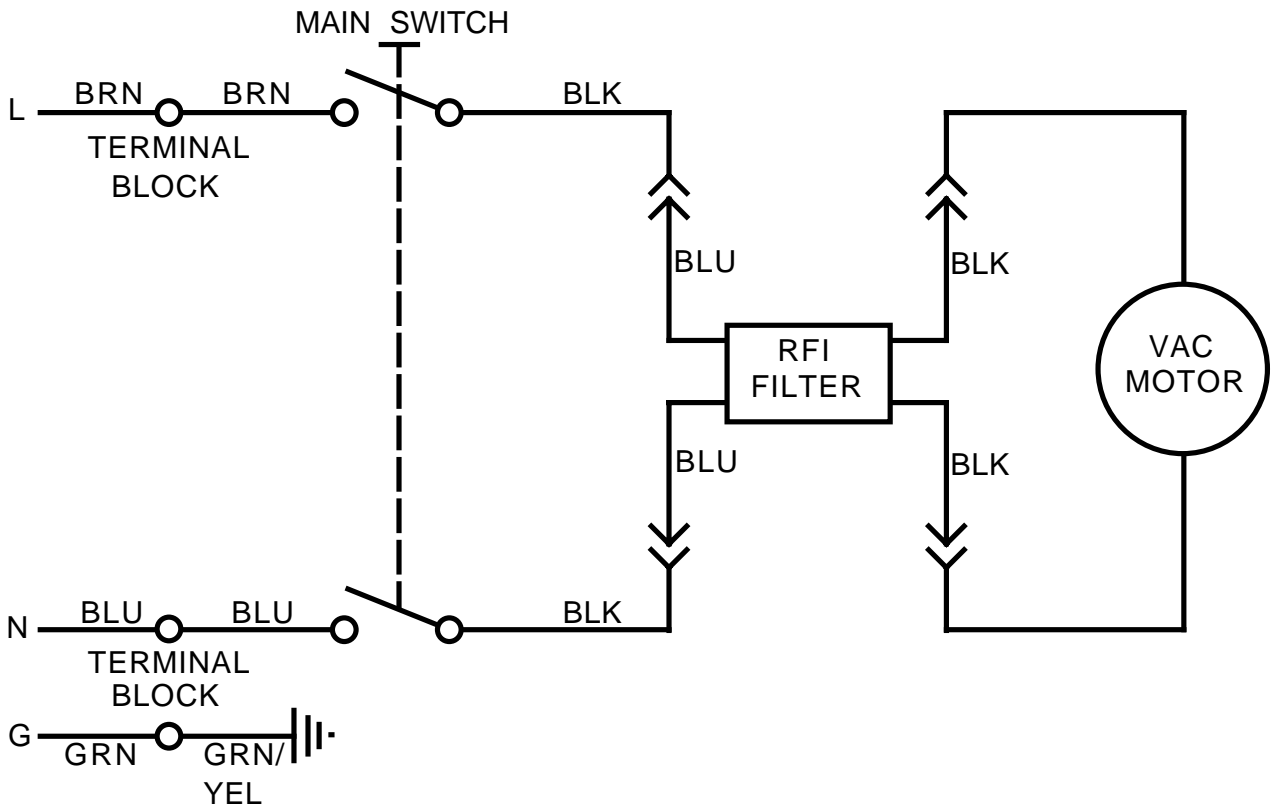
**SQUEEGEE ASSEMBLY - AIR SCOOP**

Item	Part No.	Qty	Description
	56387804	1	Squeegee Assy (#1-16)
1	56387806	1	Squeegee Tool
2	56400613	1	Gasket
3	56370711	2	Thumb Nut
4	56001939	2	5/16 Flt Washer
5	56400614	2	Gasket
	56363892	1	Squeegee Cartridge Assy (#6-10&14)
6	56105552	1	Channel
7	56105534	2	Squeegee Blade
8	56105553	1	Retainer
9	56003037	2	1/4-20 x 1/4 Stnlss Stl Screw
10	56900274	2	1/4-20 x 1 Stnlss Stl Screw
11	56363855	2	Wheel
12	56371009	4	Washer
13	56157060	2	Retainer Ring
14	56201677	2	1/4-20 Wing Nut
15	56002098	2	1/4 Flt Washer
16	56387376	2	Roller

### 100V, 115V



### 230V



**WIRING DIAGRAMS**

<b>Part No.</b>	<b>Qty</b>	<b>Description</b>
<b>100V/115V</b>		
56207077	1	Main Switch
56209876	1	Receptacle
56209977	1	Vacuum Motor
56203518	1	Carbon Brush Set For 56209977
<b>230V</b>		
56183523	1	Terminal Block
56301636	1	Main Switch
56387426	1	RFI Filter
56202290	1	Vacuum Motor
56203518	1	Carbon Brush Set For 56202290



**Nilfisk  
Advance**

*setting standards*

Nilfisk-Advance, Inc.  
14600 21st Avenue North  
Plymouth, MN 55447-3408  
[www.nilfisk-advance.com](http://www.nilfisk-advance.com)  
Phone: 800-989-2235  
Fax: 800-989-6566  
©2004 Printed in the U.S.A.