



Electronic Service Manuals

This electronic document is provided as a service to our customers. We do not create the contents of the information contained in this document. Should you have detailed questions pertaining to the information contained in this document, you may contact Michco, or the manufacturer which provided the original information in this electronic deliverable. Michco's only part in this electronic deliverable was the electronic assembly process.

You may contact Michco through the following methods:
Phone (517) 484-9312 or (800) 331-3339 MI, OH, IN only
2011 N. High St. -- Lansing, Michigan -- 48906
Fax: (517) 484-9836
Email: CustServ@Michco.com
Web site: www.Michco.Com
Parts Web site: www.FloorMachineParts.Com

Order Parts on Line at:
www.FloorMachineParts.Com

Directly to Parts & Service:
By Email: **Shop@Michco.com**
By Fax: (517) 702-2041
By Voice: Use numbers above.

Serving the Cleaning Industry Since 1922

Notice: All copyrighted material remains property of original owners, all trademarks are property of respective owners. Manuals are subject to Manufacturer's reproduction limitations. Originals or reproductions were provided by manufacturers through a request. We make no warranty as to the correctness of information provided in this document and you assume all risk.



Mighty Maid Tank Vac

FORM NO. 027488

Index for Form Number 027488

Description	Location	page
Brush & Motor	D2	6
Hose & Wand	C13	4
Tank Vac Base	C12	3
Tank Vac Cover	C11	2

MIGHTY MAID TANK VAC MODEL MM121

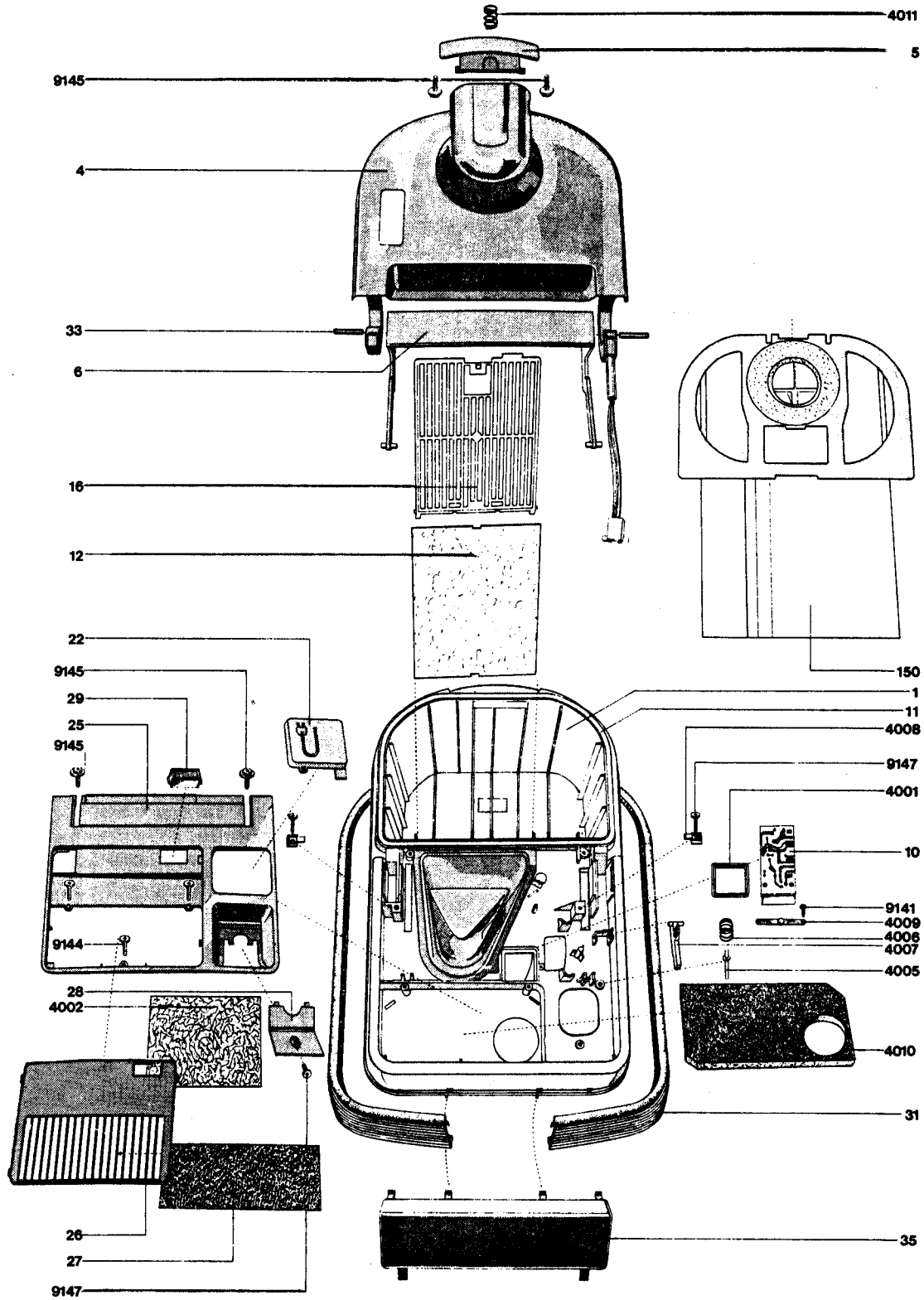
Item	Part No.	Qty	Description	Item	Part No.	Qty	Description
1	702550	1	Upper Housing	66	702587	1	Slide Potentiometer
2	702551	1	Lower Housing	67	702588	1	Socket
3	702552	1	Power Cord	68	702589	1	Hand Grip Tube
4	702553	1	Hood with Indicator	69	702590	1	Hand Grip Cover
5	702554	1	Snap Lock	70	702591	1	Button
6	702555	1	Handle	71	702592	1	Connector Housing
7	702556	1	Motor Capsule	72	702593	1	Cover Cap
10	702557	1	Electronics	73	702594	1	Cord Sleeve
11	702558	1	Hood Seal	105	702595	1	Motor 115V
12	702559	1	Secondary Filter	4000	702596	4	Motor Support Spring
16	702560	1	Filter Grid	4001	702597	1	Gasket for Circuit Board
19	702561	1	Roller Wheel	4002	702598	1	Acoustic Insulation
21	702562	1	Cord Roller with Cable	4003	702599	1	Sealing Ring for Motor
22	702563	1	Roller Switch	4004	702600	1	Front Roller Wheel Axle
25	702564	1	Cover	4005	702601	1	Cord Roller Pin
26	702565	1	Exhaust Grid	4006	702602	1	Spring, Cord Roller Switch
27	702566	1	Filter	4007	702603	1	Switch Lever
28	702567	1	Cover Support	4008	702604	1	Shackle
29	702568	1	Lamp Cover	4009	702605	1	Insulation Plate
30	702569	1	Motor Support	4010	702606	1	Insulation Plate
31	702570	1	Bumper	4011	702607	1	Pressure Spring
32	702571	1	Motor Support Ring	4012	702608	1	Connector Cable (Internal)
33	702572	2	Hood Axle	4013	702609	1	Safety Ring
34	702573	2	Rear Wheel	4015	702610	1	Holder
35	702574	1	Upright Bumper	4016	702611	1	Sealing Plate
43	702575	1	Spring Clip	4018	702612	2	Screw
44	702576	1	Hose Clip	4019	702613	1	Seal
45	702577	1	Push Button	9022	702614	1	Cord Relief
46	702578	1	Cover	9023	702615	1	Cylinder Head Screw
47	702579	1	Connector Sleeve Vac Wand	9024	702616	1	Nut
49	702580	1	Hose with End Pieces	9141	702617	1	Screw
60	702581	1	Hose Connector Flex	9144	702618	3	Screw
62	702583	1	Plug Holder	9145	702619	2	Combi Screw
63	702584	3	Plug Pins	9147	702620	1	Screw
64	702585	1	Stop Ring	9152	702621	7	Screw
65	702586	1	Cord Sleeve				

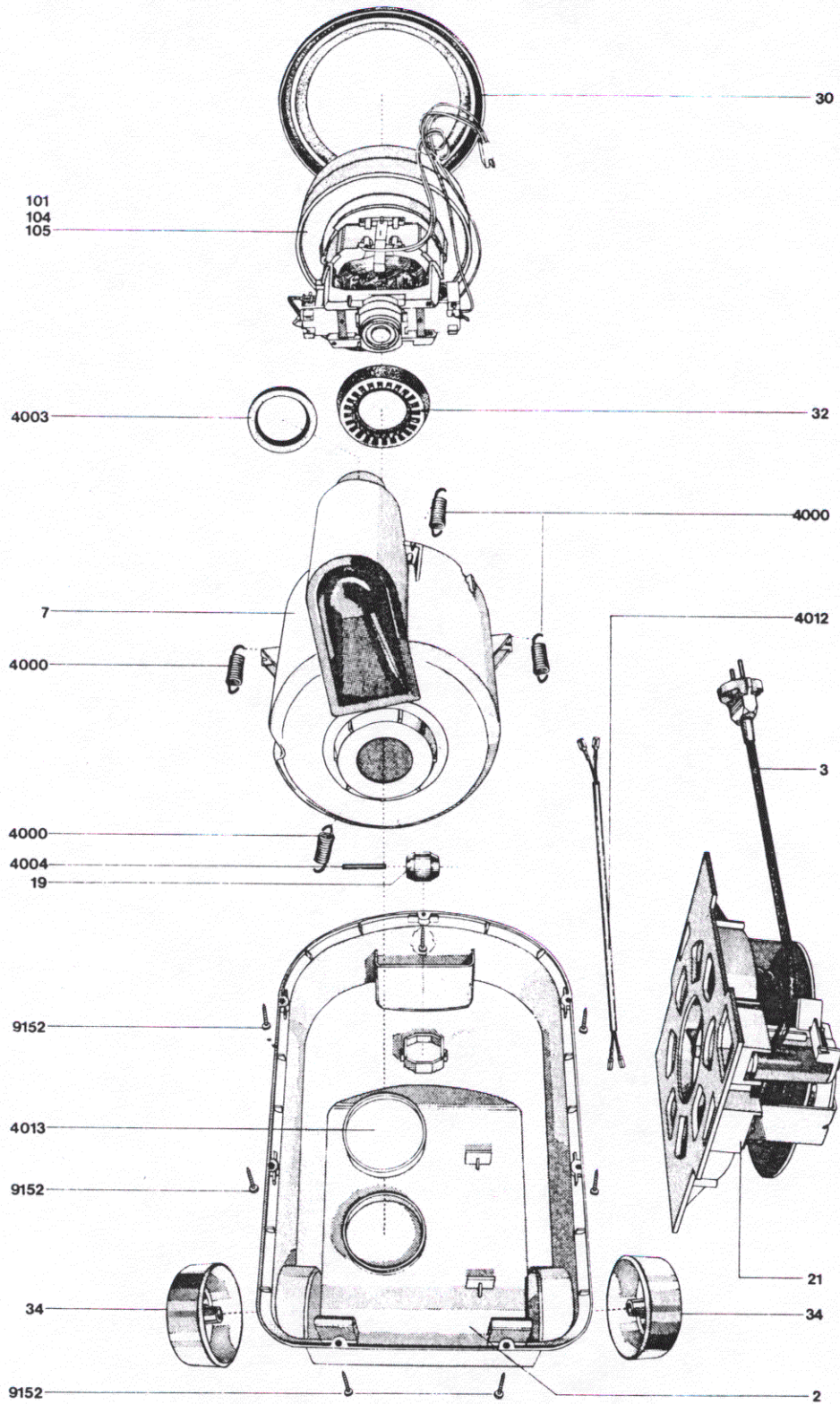
TOOLS, BAGS AND ACCESSORIES

Part No.	Qty	Description
702512	*	Electro-Hose
702514	*	Electro-Wand
702510	*	Combination Carpet and Hard Floor Tool
702540	**	Multi-Purpose Tool for Dusting/Crevice/Upholstery
702530	**	Power Carpet Brush (MM12)
702520	**	Carton of 60 Paper Filter Bags (6 pkgs of 10)
702499	**	Paper Bag (pkg of 10)
702511	**	Adapter for Accessory Tools TSB 504 - G10

* items are included as Standard Equipment together with one Package of 10 Paper Filter Bags

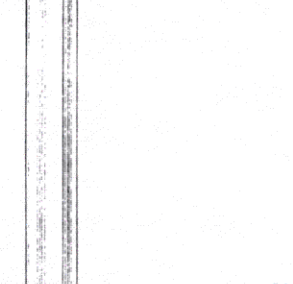
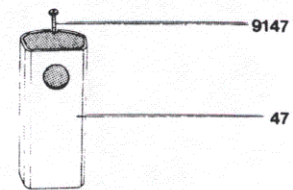
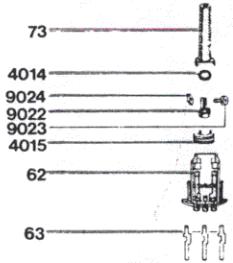
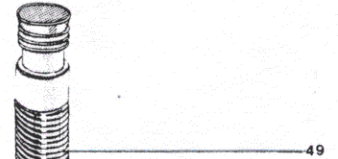
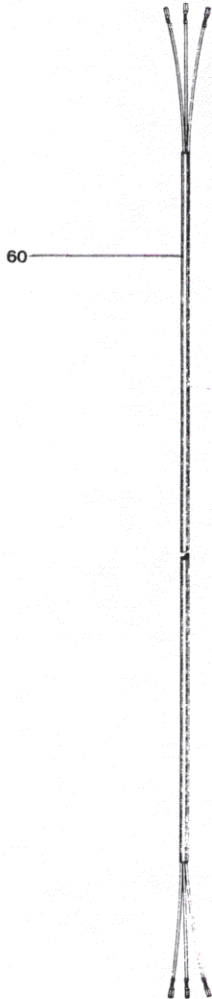
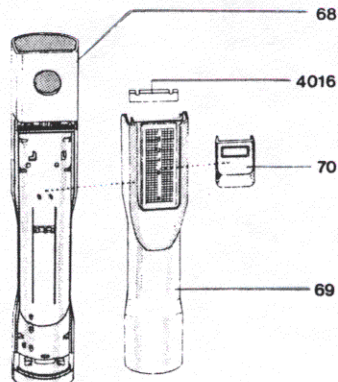
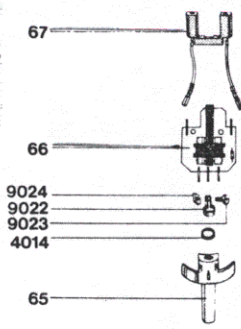
** = Optional Accessory, not included





WAND END

TOOL END



TANK END

WAND TO HOSE END

POWER CARPET BRUSH MODEL MM12

Item	Part No.	Qty	Description
1	702180	1	Housing
2	702216	1	Base Plate and Front Strip
5	702622	1	Electro Universal Joint
7	702183	1	Chassis Complete
8	702184	1	Drive Belt
19	702187	1	Side Panel Left
20	702188	1	Side Panel Right
31	702190	1	Bumper Guard
33	702191	2	Axle
34	700924	2	Wheel
52	702192	1	Brush Assembly with Drive Belt TSB 451 - G12
61	700961	1	Carbon Brush Set (2 per Set)
105	702064	1	Motor 115V
3474	702194	2	Screw
3475	702195	2	Washer
3484	702197	2	Side Panel Retaining Clip
3506	702196	2	Side Panel Seal
3507	702198	1	Packing
3509	702200	1	Base Plate Seal
3510	702201	1	Sealing Strip
3511	702276	1	Sealing Strip
3512	702203	1	Sealing Strip
3513	702204	4	Screw
3514	702202	1	Insulation Tube
3515	702206	1	Motor Mount
3518	702205	1	Insulating Tube
9141	702208	3	Screw
9147	700873	4	Screw
9155	700858	1	Screw
9482	702070	2	Universal Joint Clamp

