



Electronic Service Manuals

This electronic document is provided as a service to our customers. We do not create the contents of the information contained in this document. Should you have detailed questions pertaining to the information contained in this document, you may contact Michco, or the manufacturer which provided the original information in this electronic deliverable. Michco's only part in this electronic deliverable was the electronic assembly process.

You may contact Michco through the following methods:
Phone (517) 484-9312 or (800) 331-3339 MI, OH, IN only
2011 N. High St. -- Lansing, Michigan -- 48906
Fax: (517) 484-9836
Email: CustServ@Michco.com
Web site: www.Michco.Com
Parts Web site: www.FloorMachineParts.Com

Order Parts on Line at:
www.FloorMachineParts.Com

Directly to Parts & Service:
By Email: **Shop@Michco.com**
By Fax: (517) 702-2041
By Voice: Use numbers above.

Serving the Cleaning Industry Since 1922

Notice: All copyrighted material remains property of original owners, all trademarks are property of respective owners. Manuals are subject to Manufacturer's reproduction limitations. Originals or reproductions were provided by manufacturers through a request. We make no warranty as to the correctness of information provided in this document and you assume all risk.

PARTS LIST



HYDRO-VAC

MODEL NO'S J1200

J1600

J1200S

J1600S

SLJ1200

J1200-5

J1600-5

J1200S-5

J1600S-5

List Covers Models from

SERIAL NO. 737168

FORM NO. 042032

FEB. 1980

ADVANCE
MACHINE COMPANY

INTERNATIONAL HEADQUARTERS, Spring Park, Minnesota 55384 USA
EUROPE, 4 Rue Jean Engling, Dommeldange, Luxembourg
CANADA, 45 Iron Street, Rexdale, Ontario

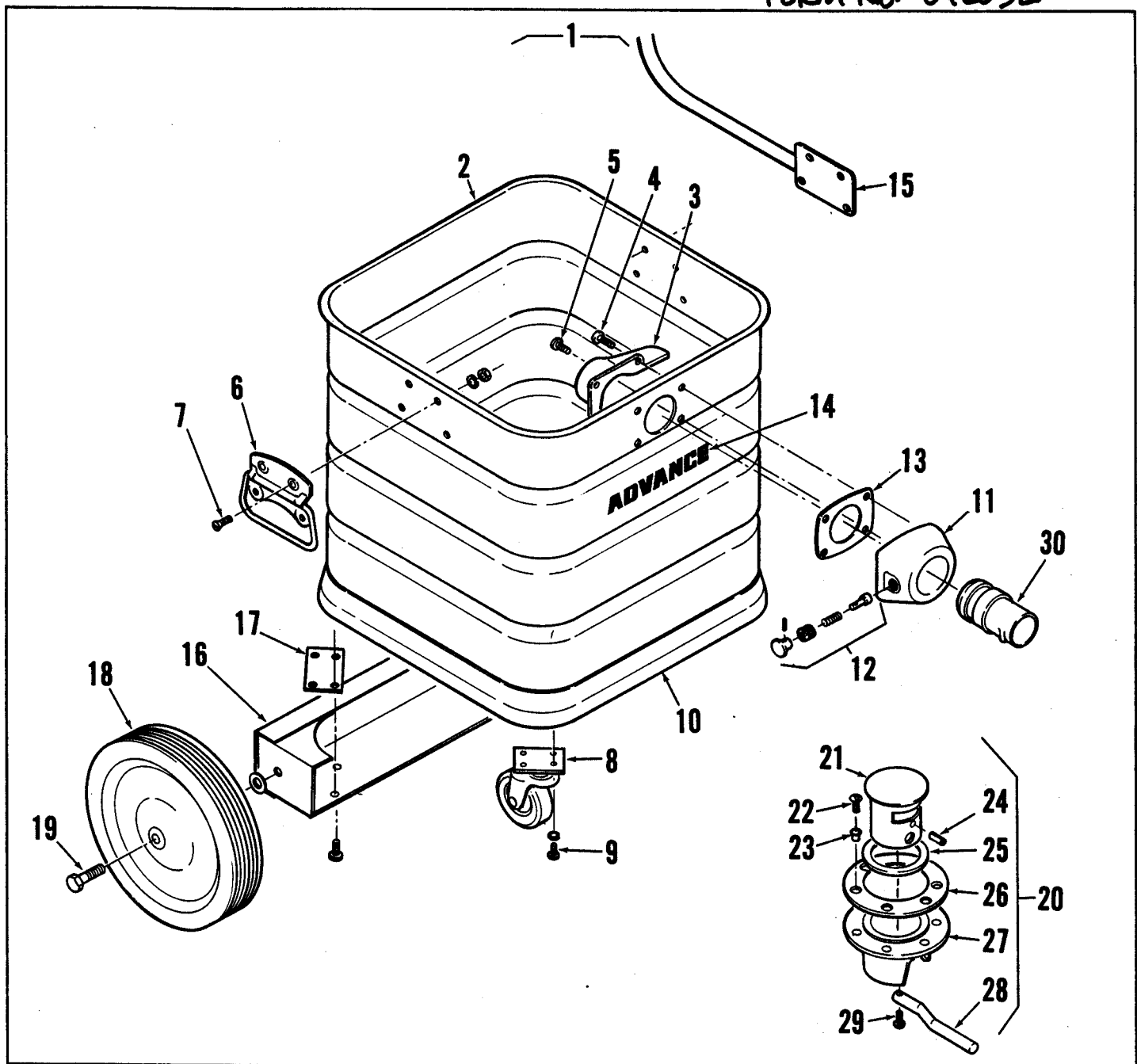


INDEX FOR FORM NUMBER 042032

<u>Description</u>	<u>Location</u>	<u>Page</u>
Motor, Vacuum	E2	4
Tank	E1	3
Vacuum Head	D13	1
Wiring Diagram	E3	5

VACUUM HEAD

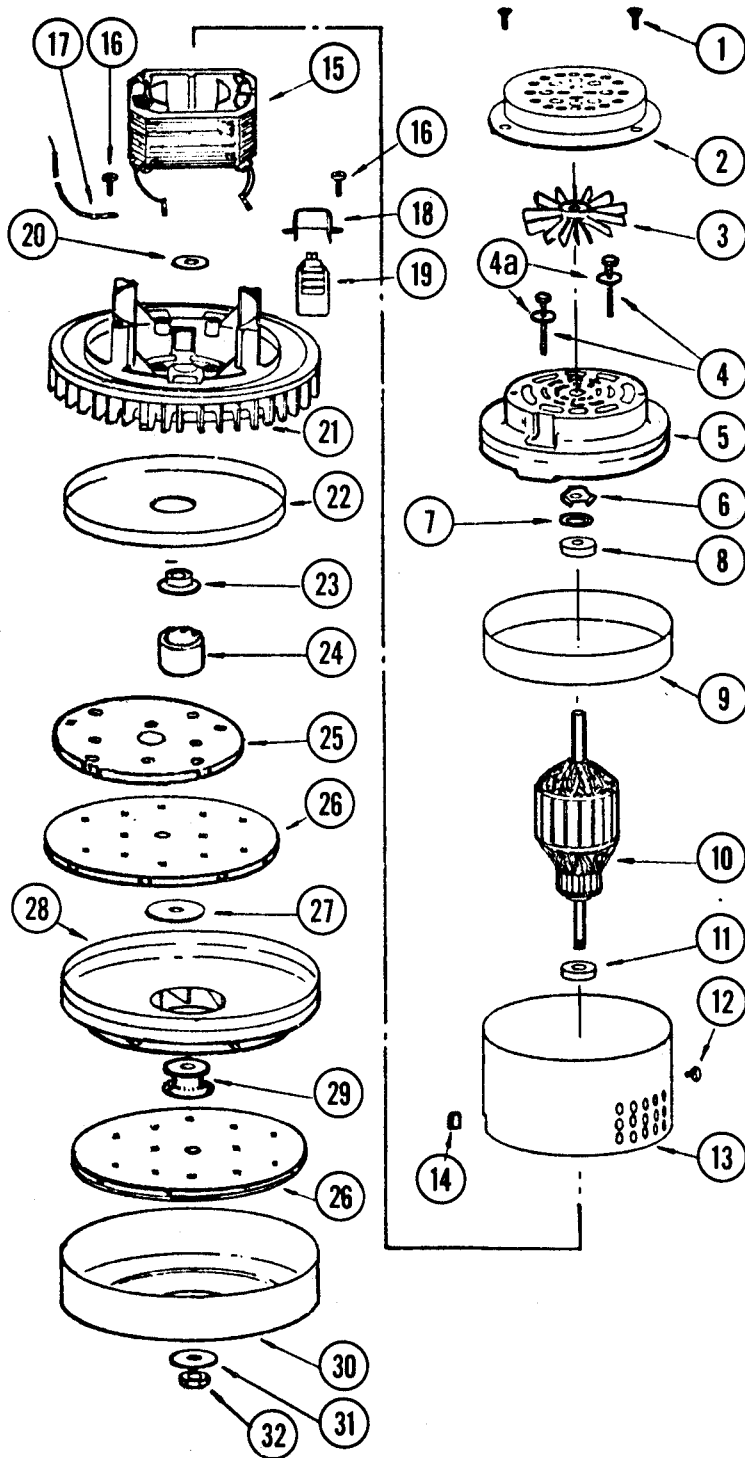
Item	Part No.	Qty	Description	Item	Part No.	Qty	Description
1	206000	1	Vac Head Assembly, 115V	51	200522	1	Washer
	206002	1	Vac Head Assembly, 230V	52		1	Screw, #8-32 x .312
2	015076	1	Decal, Advance	53		18	Nut, .312-18 Hex
3	206036	1	Cover	54	200581	1	Stem
4		4	Screw, 6-32 x 1 Flat Hd	55	200603	1	Float
5	206022	4	Bushing	56	200495	1	Basket Assembly (includes #49-55)
6	206046	1	Cover Assembly	57	206026	1	Harness Assembly (230V only)
7		4	Washer, Shakeproof #6	58		1	Washer, Shakeproof .437
8		4	Nut, #6-32 Hex	59	301636	1	Switch (230V only)
9	015084	1	Decal, Warning	60		1	Screw, #8-32 x .75 Pan Hd
10	300540	1	Bracket	61	325274	1	Washer, Cupped
11	249623	1	Clamp, Strain Relief	62	325276	1	Washer
12		2	Screw, #8-32 x .625	63	014119	1	Decal, Ground
13		4	Washer, Shakeproof #8				
14		10	Nut, #8-32 Hex				
15		3	Screw, #8-32 x .50 Pan Hd				
16	301396	1	Strain Relief				
17	570680	1	Cord Set, #16/3 x 30' 115V				
	209769	1	Cord Set, #14 x 40' 230V				
18		6	Screw, #10-24 x .625 Pan Hd				
19		18	Washer, Shakeproof #10				
20	206028	2	Foam, Sound Reduction				
21	015078	1	Decal, Hydro Vac				
22	015080	1	Decal, On-Off				
23		1	Screw, #8-32 x .625				
24	325219	2	Tie, Cable				
25	200340	1	Switch, 115V				
26	584994	1	Insulation, 115V-230V				
27	206014	1	Receptacle Assembly, 115V-230V				
28	206052	1	Cover Assembly				
29	203629	1	Foam, Sound Reduction				
30	203904	1	Foam, Sound Reduction				
31		12	Screw, #10-24 x .50				
32	206054	6	Spacer				
33	206020	1	Gasket, Motor				
34	249525	1	Motor, 115V				
	249526	1	Motor, 230V				
35	201480	1	Bumper				
36	206030	1	Cover				
37	209763	1	Gasket, .25 x .75 x 65"				
38	205642	1	Baffle, Weldment				
39	205649	2	Foam, Sound Reduction				
40	200379	1	Gasket, Motor				
41	200964	1	Latch				
42	200972	2	Bearing, Sleeve				
43	200980	2	Spring				
44	200948	2	Knob				
45	200999	2	Pin				
46	206058	1	Gasket, Motor				
47	311227	1	Ring, Terminal #8				
48	311229	2	Ring, Terminal #6				
49	200492	1	Shield				
50	200565	1	Gasket				



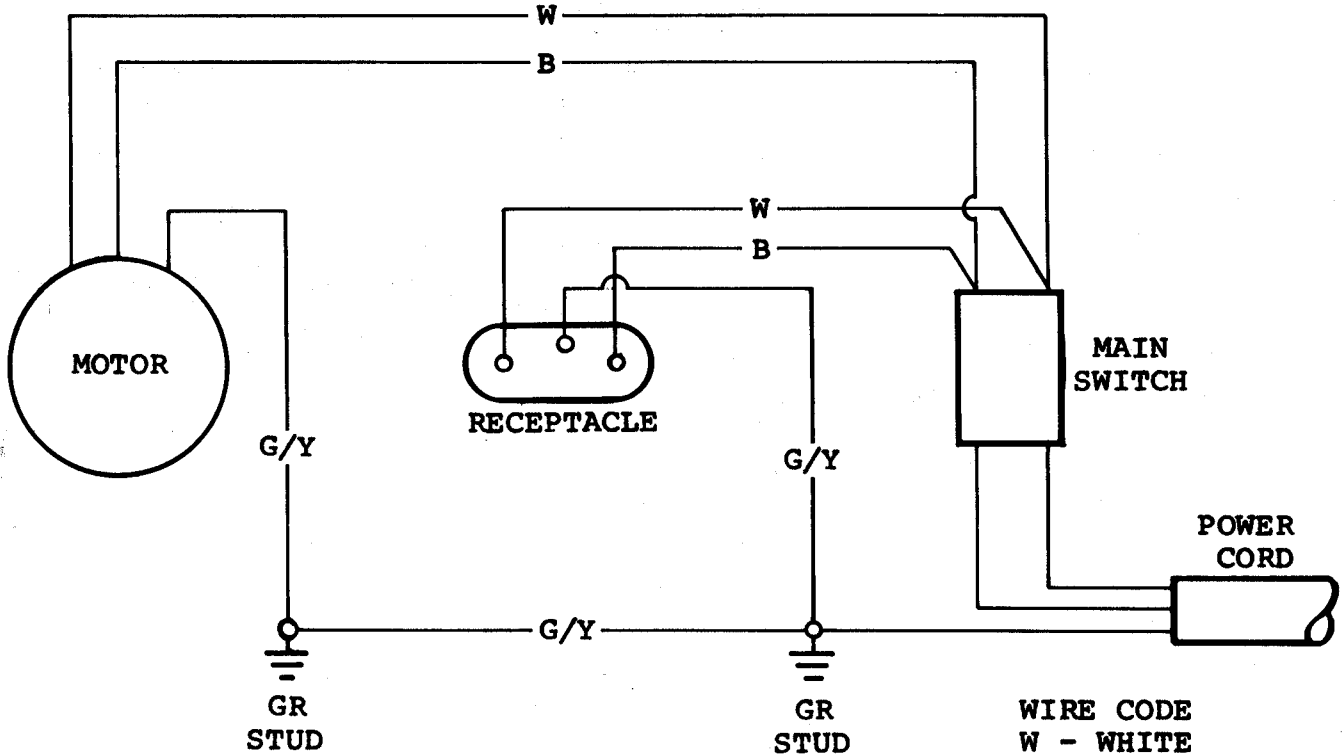
ITEM	PART NO	QTY	DESCRIPTION	ITEM	PART NO	QTY	DESCRIPTION
1	205 303	1	TANK ASSEMBLY, 12 Gallon Painted	15	201 138	1	HANDLE (The following parts 19 thru 23 included on 205 354 Tank Assembly)
	205 311	1	TANK ASSEMBLY, 16 Gallon Painted	16	201 588	1	BASE, Weldment
	205 338	1	TANK ASSEMBLY, 12 Gallon S.S.	17	201 642	2	SPACER
	205 346	1	TANK ASSEMBLY, 16 Gallon S.S.	18	201 774	2	WHEEL
	205 354	1	TANK ASSEMBLY, 12 Gallon W/Lge. Whls.	19	201 790	2	BOLT
2	201 235	1	TANK, 12 Gallon Painted	20	204 102	1	VALVE ASSEMBLY, Drain (Includes Items 20 thru 29)
	201 243	1	TANK, 16 Gallon Painted	21	204 129	1	PLUNGER
	201 278	1	TANK, 12 Gallon Stainless	22		6	SCREW, 1/4-20 X .437 Rd. Hd.
	201 294	1	TANK, 16 Gallon Stainless	23	204 218	6	WASHER, Sealing
3	201 392	1	DEFLECTOR	24	204 196	1	PIN
4	209 521	3	SCREW, #10 X 1 Phil. Hd.	25	204 153	1	GASKET
5	209 519	1	SCREW, #10 X .75 Phil. Hd.	26	204 161	1	GASKET
6	201 030	2	HANDLE	27	204 145	1	HOUSING, Valve
7		4	SCREW, 10-24 X .312 Oval Hd. (w/Nut & Lkw.)	28	201 188	1	HANDLE
8	201 693	4	CASTER	29		1	SCREW, 8-32 X .50 Rd. Hd.
9		16	SCREW, 10-32 X .375	30	201 820	1	ADAPTOR
10	201 502	1	BUMPER (Vac Tank)				
11	201 386	1	CONNECTOR ASSEMBLY (Include Items 11 and 12)				
12	365 548	1	LOCK PIN ASSEMBLY				
13	201 390	1	GASKET				
14	016 519	1	DECAL. Advance				

PICK UP TANK

VACUUM MOTOR

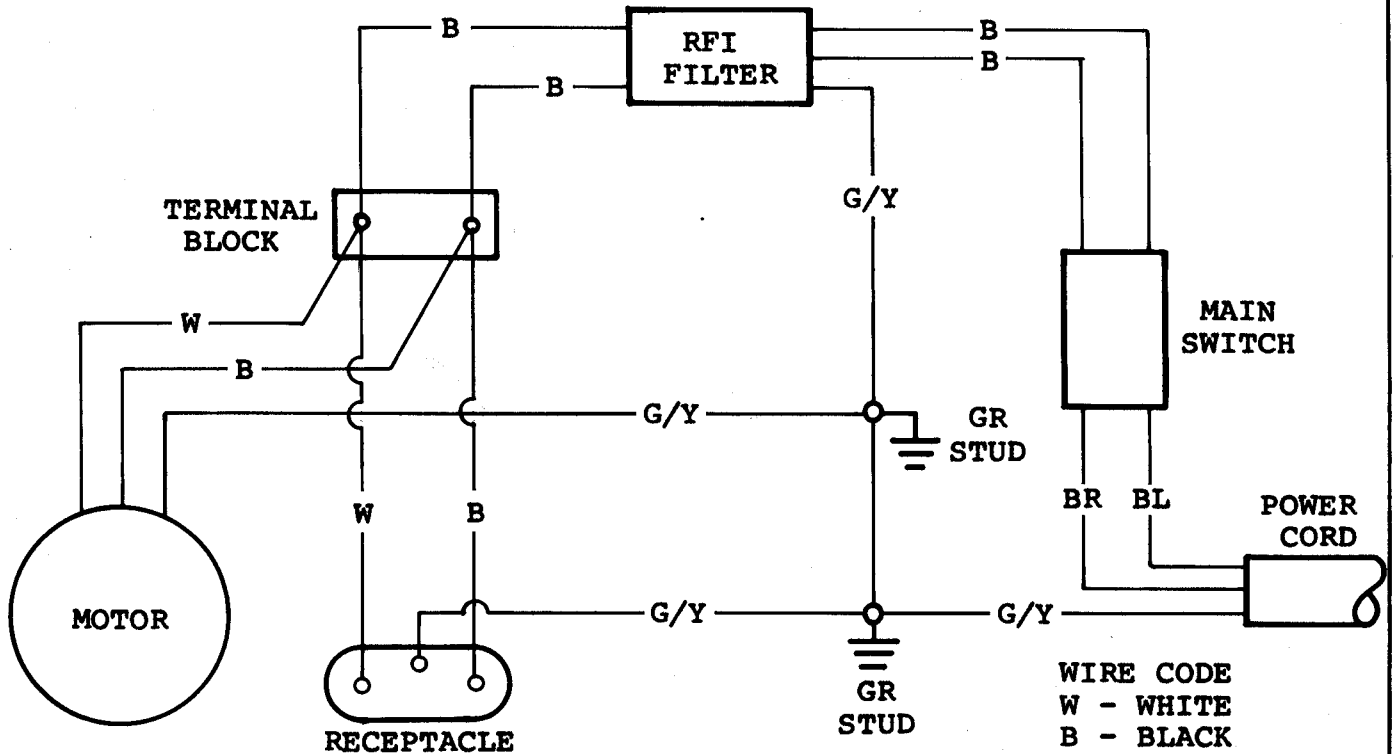


ITEM	PART NO	QTY	DESCRIPTION
1	249 725	2	SCREW
2	249 727	1	COVER
3	249 729	1	FAN
4	249 731	2	SCREW
5	202 584	1	BRACKET
6	249 733	1	LOAD SPRING
7	249 735	1	DISC
8	249 737	1	BEARING
9	249 739	1	AIR VENT RING
10	249 743	1	ARMATURE 115 VOLT
	249 741	1	ARMATURE 220 VOLT
11	228 051	1	BEARING
12	202 754	1	SCREW
13	249 745	1	BAND
14	202 762	1	SNAP BUSHING
15	207 373	1	FIELD 115 VOLT
	202 536	1	FIELD 220 VOLT
16	202 772	5	SCREW
17	202 738	1	LEAD & TERM
18	208 132	2	CLAMP
19	207 403	2	BRUSH MECHANISM (SET)
20	249 747	1	NEOPRENE WASHER
21	249 749	1	FAN END BRACKET
22	202 703	1	SHELL
23	203 424	1	SPACER
24	249 751	1	SLINGER
25	249 753	1	FAN
26	202 592	2	FAN
27	202 770	1	WASHER
28	249 755	1	STATIONARY FAN
29	203 516	1	SPACER
30	249 757	1	FAN SHELL
31	203 432	1	WASHER
32	203 440	1	NUT
4A	249 759	2	WASHER



WIRE CODE
 W - WHITE
 B - BLACK
 G/Y- GREEN/YELLOW

115V POWERHEAD WIRING DIAGRAM



WIRE CODE
 W - WHITE
 B - BLACK
 G/Y- GREEN/YELLOW
 BR- BROWN
 BL- BLUE

230B POWERHEAD WIRING DIAGRAM

WIRING DIAGRAM

