



Electronic Service Manuals

This electronic document is provided as a service to our customers. We do not create the contents of the information contained in this document. Should you have detailed questions pertaining to the information contained in this document, you may contact Michco, or the manufacturer which provided the original information in this electronic deliverable. Michco's only part in this electronic deliverable was the electronic assembly process.

You may contact Michco through the following methods:
Phone (517) 484-9312 or (800) 331-3339 MI, OH, IN only
2011 N. High St. -- Lansing, Michigan -- 48906
Fax: (517) 484-9836
Email: CustServ@Michco.com
Web site: www.Michco.Com
Parts Web site: www.FloorMachineParts.Com

Order Parts on Line at:
www.FloorMachineParts.Com

Directly to Parts & Service:
By Email: **Shop@Michco.com**
By Fax: (517) 702-2041
By Voice: Use numbers above.

Serving the Cleaning Industry Since 1922

Notice: All copyrighted material remains property of original owners, all trademarks are property of respective owners. Manuals are subject to Manufacturer's reproduction limitations. Originals or reproductions were provided by manufacturers through a request. We make no warranty as to the correctness of information provided in this document and you assume all risk.

HYDRO VAC

MODELS: J105

J108

J108SS

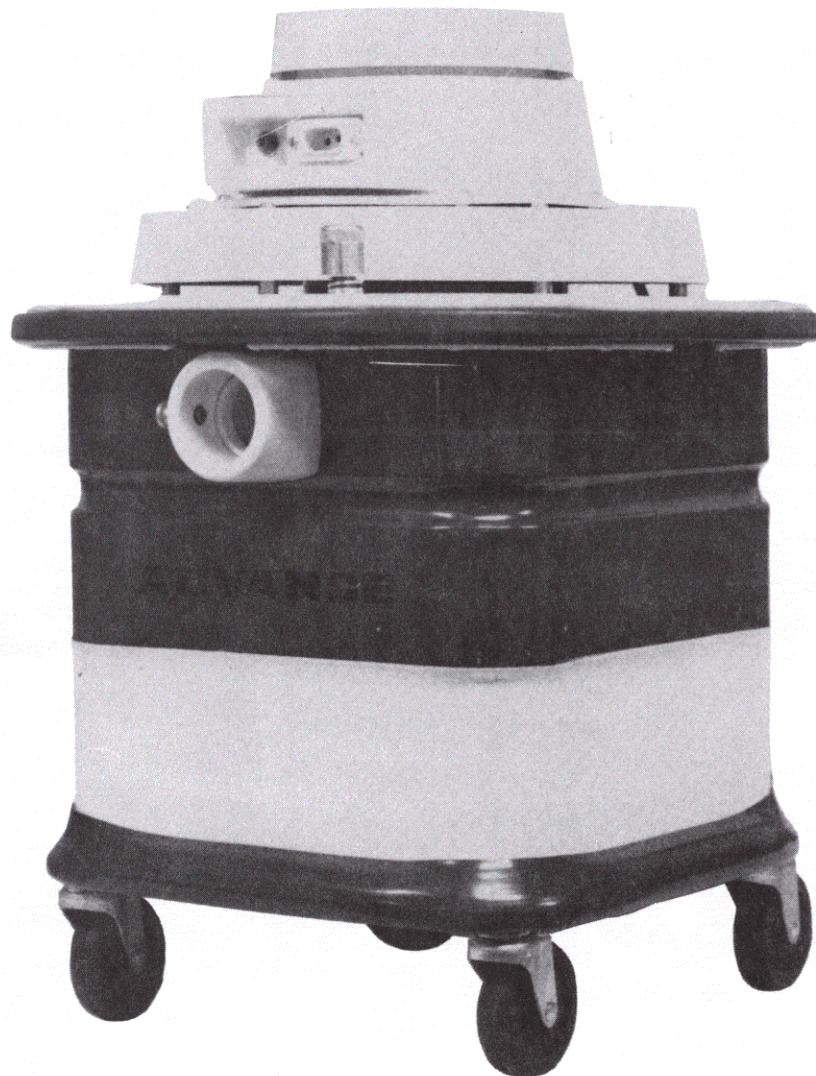
List Covers Models from

SERIAL NO. 737118

FORM NO. 042031

FEB. 1980

PARTS LIST



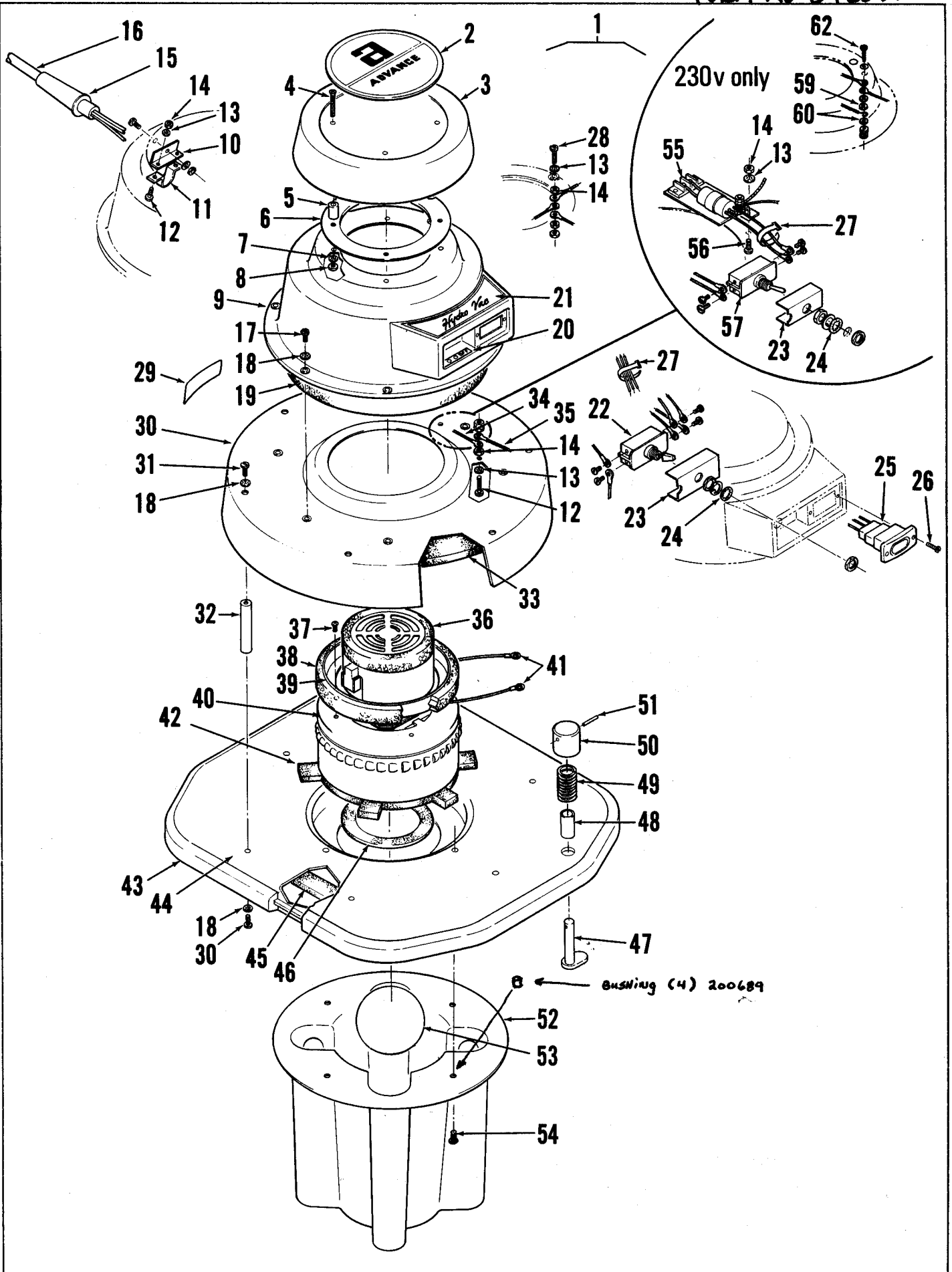
**ADVANCE
MACHINE COMPANY**

INTERNATIONAL HEADQUARTERS, Spring Park, Minnesota 55384 USA
EUROPE, 4 Rue Jean Engling, Dommeldange, Luxembourg
CANADA, 45 Iron Street, Rexdale, Ontario



INDEX FOR FORM NUMBER 042031

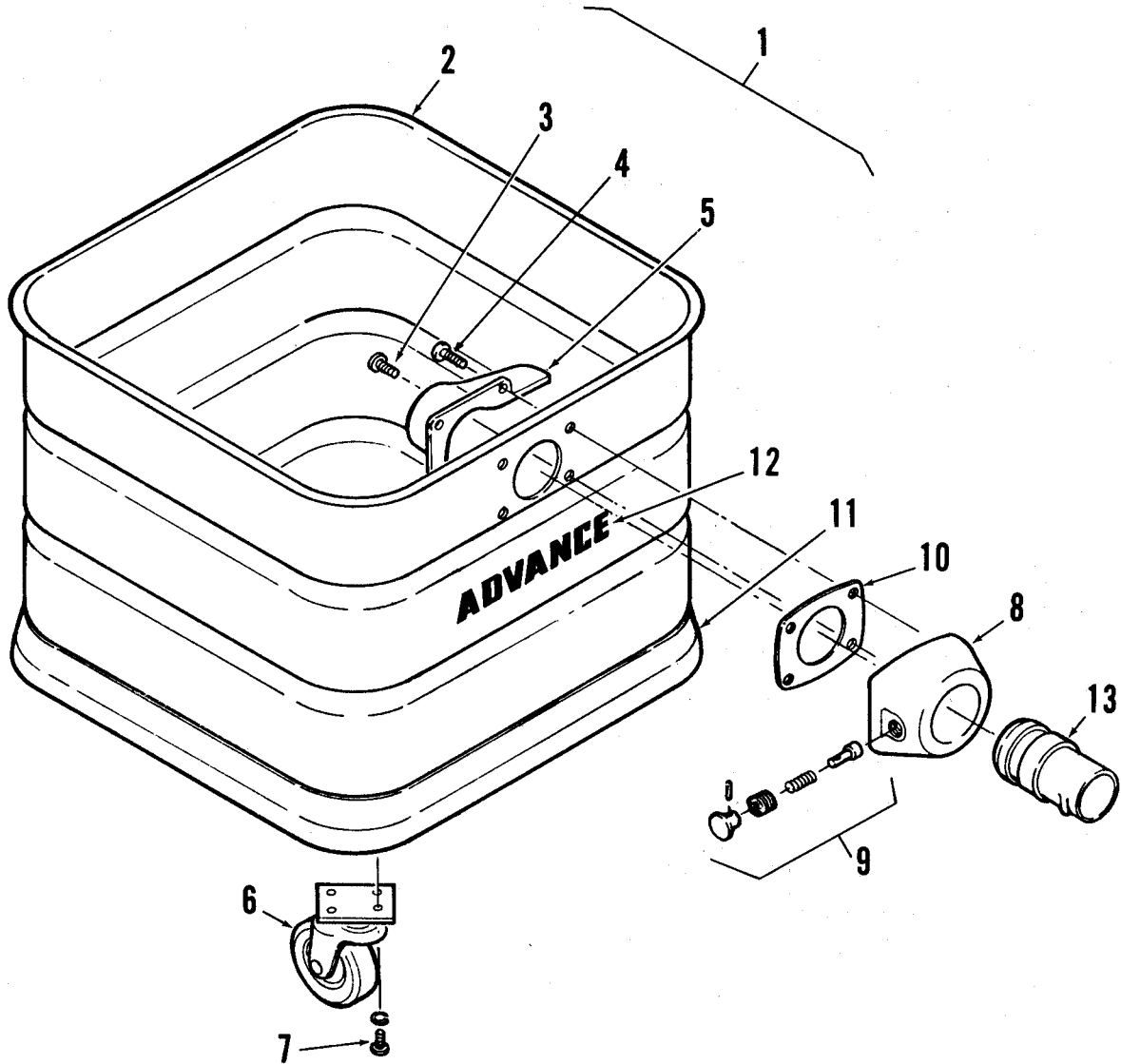
<u>Description</u>	<u>Location</u>	<u>Page</u>
Motor, Vacuum	D10	4
Tank, Recovery	D9	3
Vacuum Head	D7	1
Wiring Diagram - 115V & 230V	D11	5



VACUUM HEAD

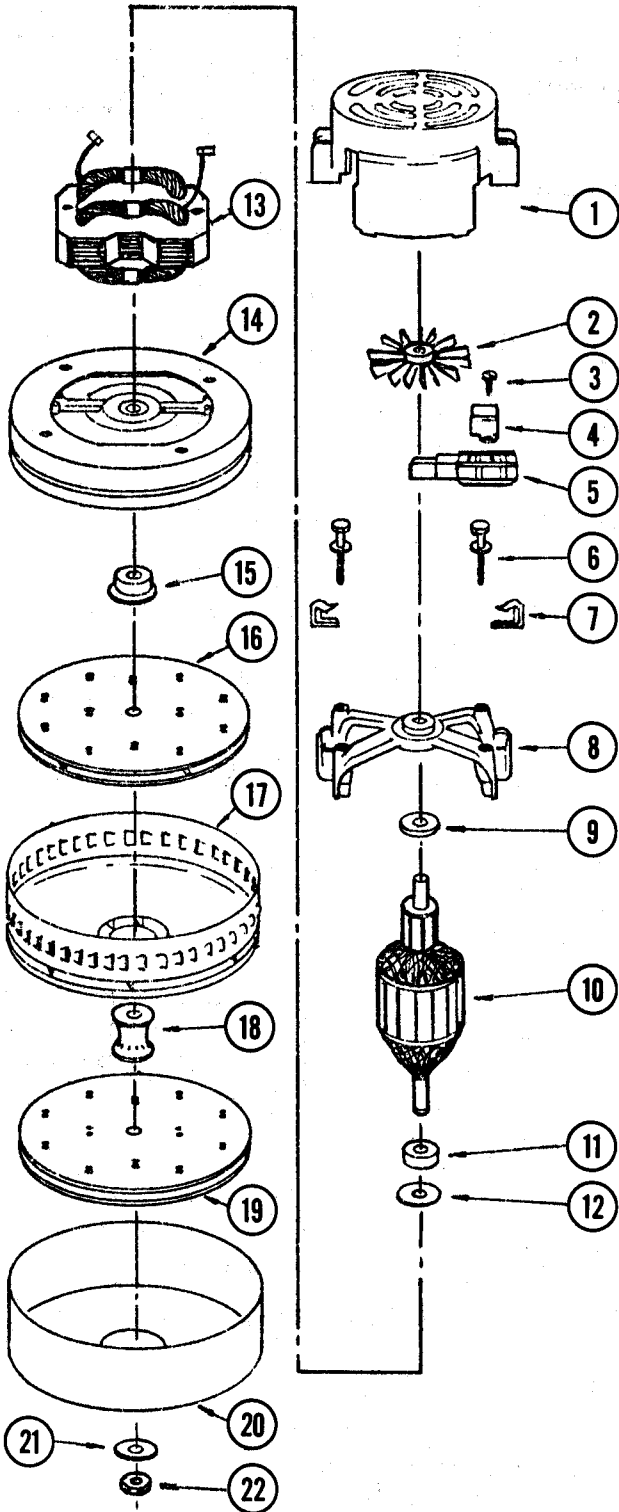
VACUUM HEAD

ITEM	PART NO	QTY	DESCRIPTION
1	206 100	1	VAC HEAD ASSEMBLY, 115V
	206 102	1	VAC HEAD ASSEMBLY, 230V
2	015 076	1	DECAL, Advance
3	206 036	1	COVER
4		4	SCREW, #6-32 X 1, Flat Hd.
5	206 022	4	BUSHING
6	206 116	1	PLATE
7		4	WASHER, Shakeproof #6
8		4	NUT, #6-32 Hex
9	206 046	1	COVER, Assembly
10	300 540	1	BRACKET
11	249 623	1	CLAMP, Strain Relief
12		4	SCREW, #8-32 X .625, Pan Hd.
13		7	WASHER, Shakeproof #8
14		13	NUT, #8-32, Hex
15	301 396	1	STRAIN RELIEF
16	570 680	1	CORD SET 14/3 X 30' 115V
	209 769	1	CORD SET 14/3 X 40' 230V
17		6	SCREW, #10-24 X .625, Pan Hd.
18		18	WASHER, Shakeproof #10
19	206 028	2	FOAM, Sound Reduction
20	015 080	1	DECAL, On-Off
21	015 078	1	DECAL, Hydro Vac
22	200 340	1	SWITCH, 115V
23	584 994	1	INSULATOR
24		1	WASHER, Shakeproof .437
25	206 014	1	RECEPTACLE
26		2	SCREW, #6-32 X .375
27	325 219	2	TIE, Cable
28		1	SCREW, #8-32 X .75 Pan Hd.
29	015 084		DECAL, Warning
30	206 114	1	COVER, Assembly
31		12	SCREW, #10-24 X .50 Pan Hd.
32	203 912	6	SPACER
33	203 726	1	FOAM, Sound Reduction
34	206 060	1	WIRE ASSEMBLY #14 X 6"
35	325 217	1	WIRE ASSEMBLY #14 X 9"
36	206 104	1	GASKET, Motor
37		4	SCREW, #10-24 X .50 S.T. Phil. Hd.
38	206 108	1	GASKET, Motor
39	207 799	1	RING
40	207 802	1	MOTOR, Vac 115V
	202 290	1	MOTOR, Vac 230V
41	311 229	2	RING TERMINAL #6
42	206 106	1	GASKET, Motor
43	201 499	1	BUMPER
44	203 971	1	COVER
45	209 509	1	GASKET, 48"
46	206 128	1	GASKET
47	200 964	2	LATCH
48	200 972	2	BEARING, Sleeve
49	200 980	2	SPRING
50	200 948	2	KNOB
51	200 999	2	PIN
52	206 126	1	HOUSING, Float
53	209 511	1	FLOAT
54		4	SCREW, #10-24 X .75 S.T. Pan Hd.
55	206 122	1	HARNESS ASSEMBLY
56		2	SCREW, #8-32 X .50 Pan Hd.
57	301 636	1	SWITCH, 230V Only
58		1	SCREW, #8-32 X .75 Pan Hd.
59	325 274	1	WASHER, Cupped
60	325 276	1	WASHER
61	014 119	1	DECAL, Ground



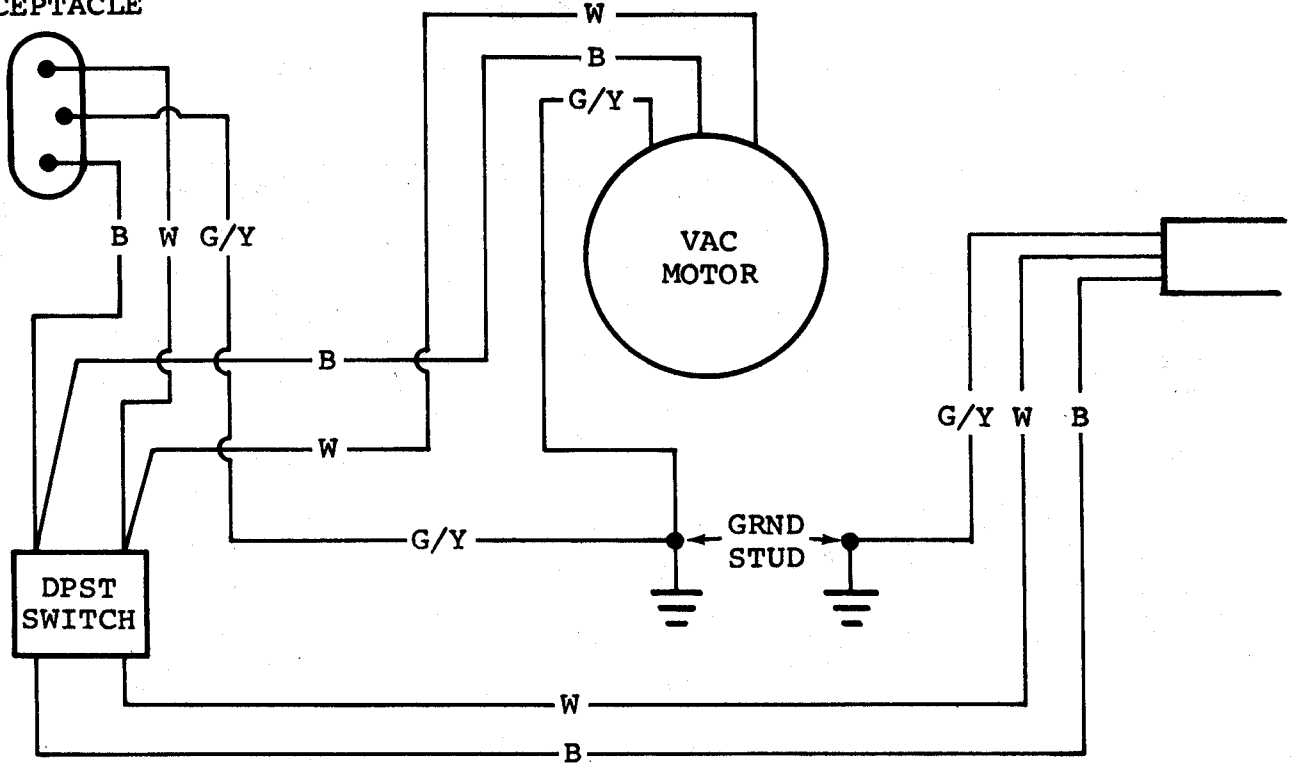
ITEM	PART NO	QTY	DESCRIPTION
1	205 397	1	TANK ASSEMBLY, 5 Gal.
	205 400	1	TANK ASSEMBLY, 8 Gal.
	205 435	1	TANK ASSEMBLY, 8 Gal. S.S.
2	201 170	1	TANK, 5 Gal.
	201 197	1	TANK, 8 Gal.
	201 227	1	TANK, 8 Gal. S.S.
3	209 519	1	SCREW, #10 X .75 Phil. Hd.
4	209 521	3	SCREW, #10 X 1. Phil. Hd.
5	201 392	1	DEFLECTOR
6	201 693	4	CASTER
		16	SCREW, #10-32 X .375 w/Lkw.
8	201 386	1	CONNECTOR ASSEMBLY (Including Items 8 and 9)
9	365 548	1	LOCK PIN ASSEMBLY
10	201 390	1	GASKET
11	201 537	1	BUMPER
12	023 218	1	DECAL, Advance
13	201 820	1	ADAPTOR

VACUUM MOTOR



ITEM	PART NO	QTY	DESCRIPTION
1	202 300	1	HOUSING
2	203 591	1	FAN
3	203 263	4	SCREW
4	207 285	2	CLAMP
5	203 518	2	BRUSH MECHANISM (SET)
6	203 494	2	SCREW
7	202 302	2	CLIP
8	202 306	1	BRACKET
9	228 388	1	FIBRE WASHER
10	208 160	1	ARMATURE 115V
	202 308	1	ARMATURE 230V
11	228 051	1	BEARING
12	202 330	1	NEOPRENE WASHER
13	203 556	1	FIELD 115V
	208 090	1	FIELD 230V
14	202 332	1	FAN END BRACKET
15	203 424	1	SPACER
16	208 191	2	ROTATING FAN, 115V
	208 191	1	ROTATING FAN, 230V
17	203 394	1	STATIONARY FAN
18	203 426	1	SPACER
19	202 328	1	ROTATING FAN, 230V
20	203 594	1	FAN SHELL 115V
	202 326	1	FAN SHELL 230V
21	202 432	1	WASHER
22	203 440	1	NUT

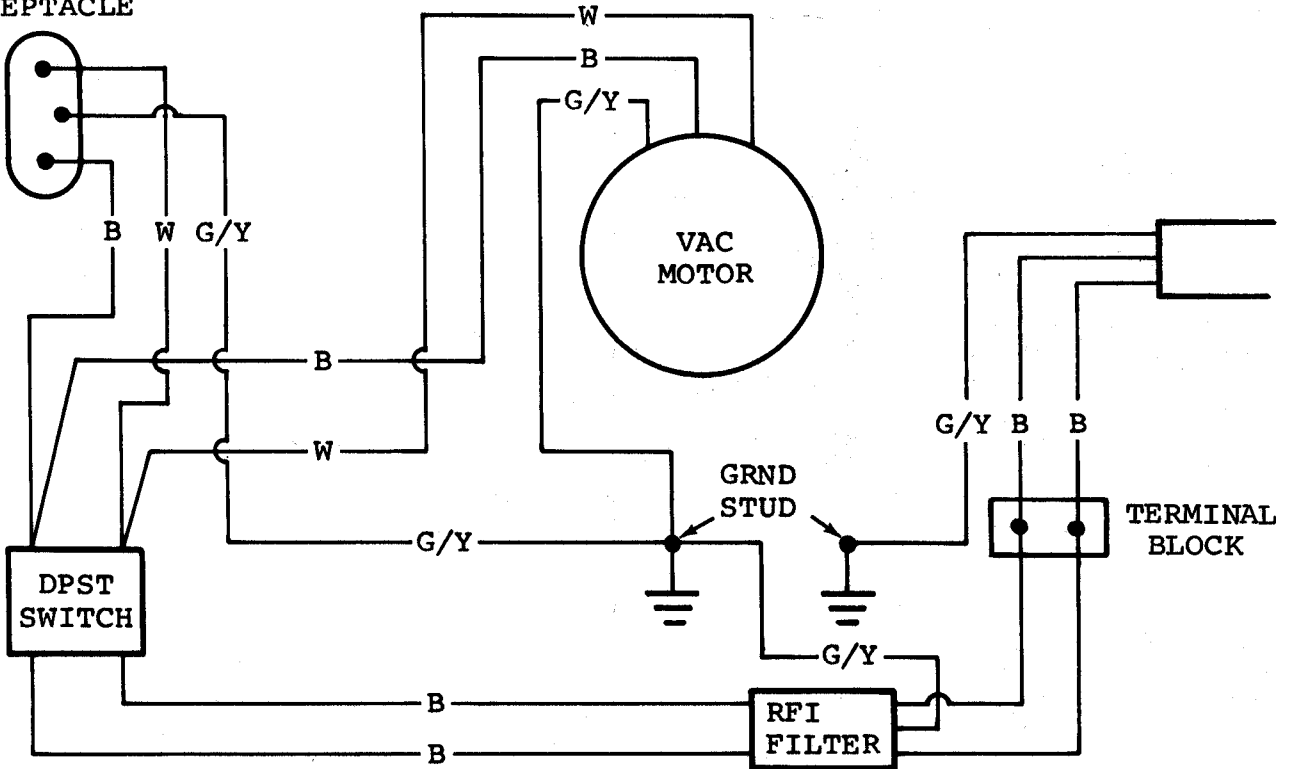
RECEPTACLE



115 V WIRING DIAGRAM

WIRE CODE
 W - WHITE
 B - BLACK
 G/Y - GREEN/YELLOW

RECEPTACLE



230 V WIRING DIAGRAM

WIRE CODE
 W - WHITE
 B - BLACK
 G/Y - GREEN/YELLOW