



Electronic Service Manuals

This electronic document is provided as a service to our customers. We do not create the contents of the information contained in this document. Should you have detailed questions pertaining to the information contained in this document, you may contact Michco, or the manufacturer which provided the original information in this electronic deliverable. Michco's only part in this electronic deliverable was the electronic assembly process.

You may contact Michco through the following methods:
Phone (517) 484-9312 or (800) 331-3339 MI, OH, IN only
2011 N. High St. -- Lansing, Michigan -- 48906
Fax: (517) 484-9836
Email: CustServ@Michco.com
Web site: www.Michco.Com
Parts Web site: www.FloorMachineParts.Com

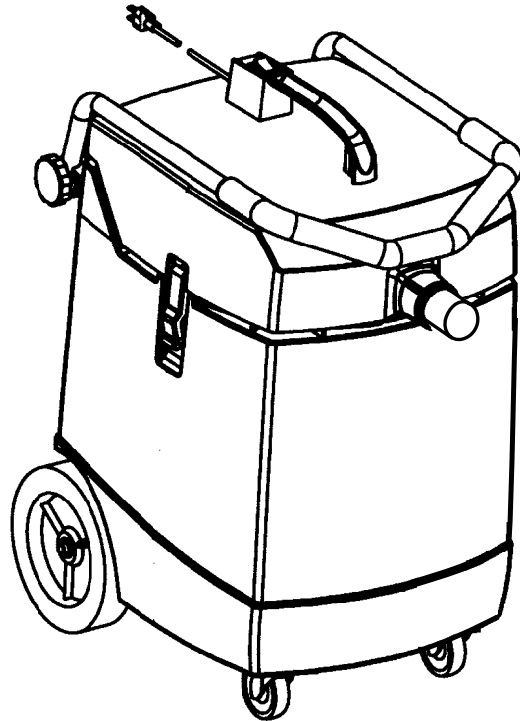
Order Parts on Line at:
www.FloorMachineParts.Com

Directly to Parts & Service:
By Email: **Shop@Michco.com**
By Fax: (517) 702-2041
By Voice: Use numbers above.

Serving the Cleaning Industry Since 1922

Notice: All copyrighted material remains property of original owners, all trademarks are property of respective owners. Manuals are subject to Manufacturer's reproduction limitations. Originals or reproductions were provided by manufacturers through a request. We make no warranty as to the correctness of information provided in this document and you assume all risk.

GW 1020 / GW 1030

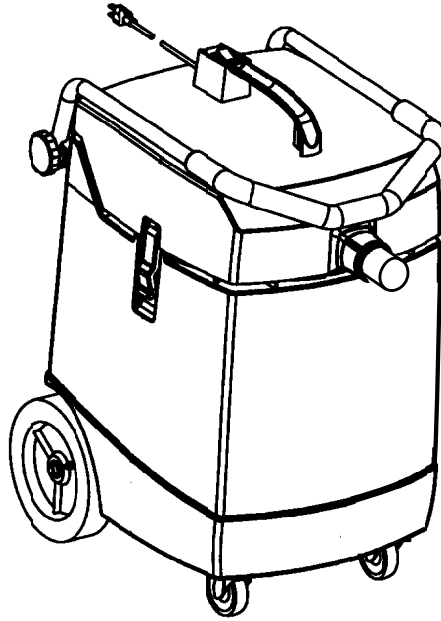


PARTS LIST

Nilfisk MODELS 56209350, 56209351, 56209407, 56209410, 56209412
56209415, 56209417, 56209418, 56209427, 56209429, 56209431
56209433, 56209530, 56209532, 56209533, 56209352, 56209579
All models covered in this manual are OBSOLETE



Nilfisk
by Nilfisk-Advance

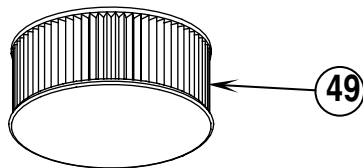
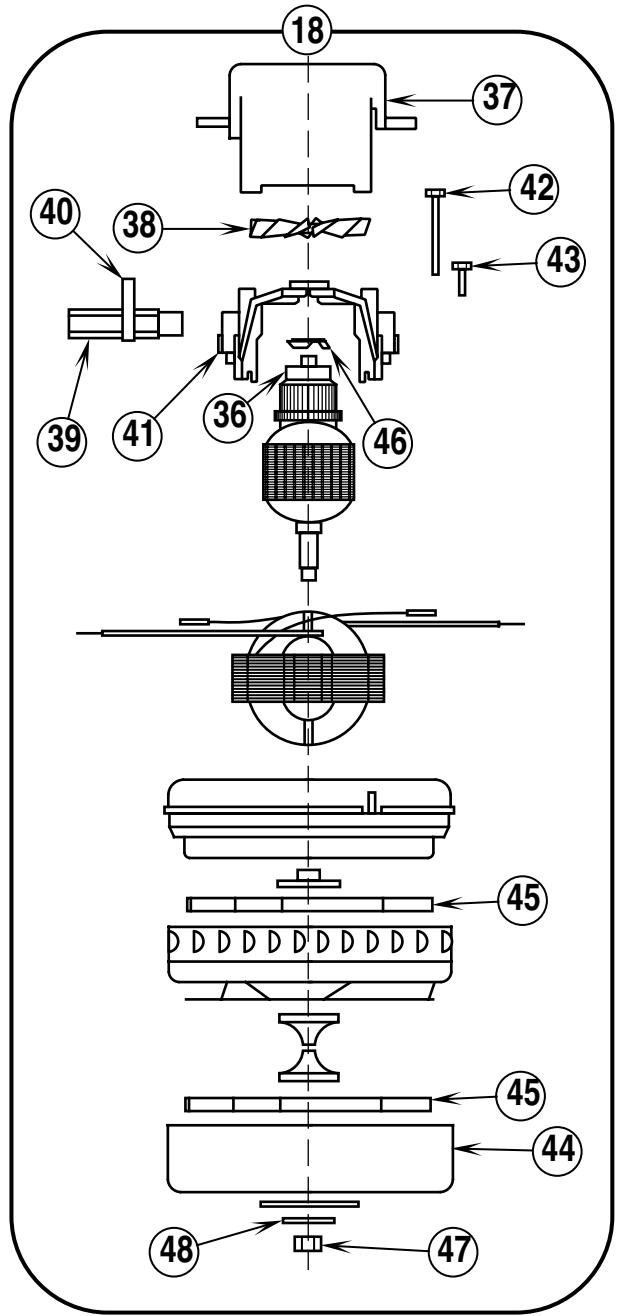
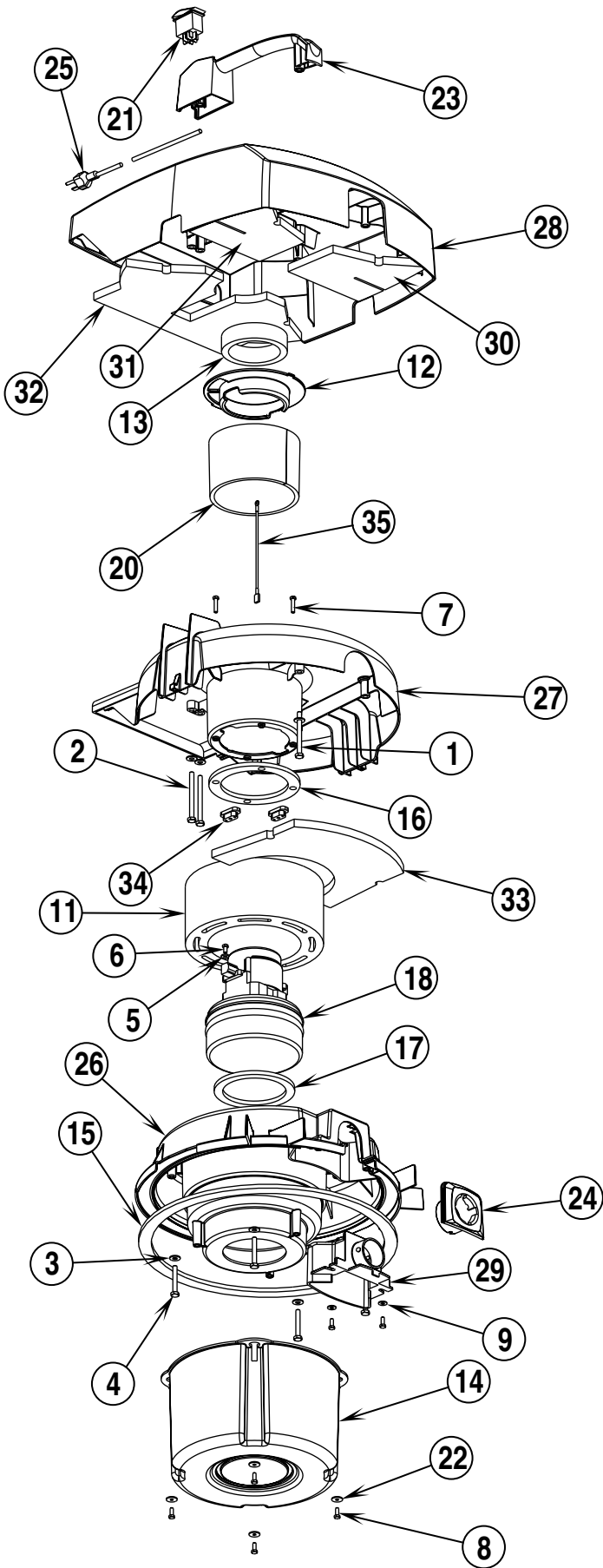


DESCRIPTION	PLAN
MOTORHEAD SYSTEM	B-3.3.1-3
TANK SYSTEMS	B-3.3.1-5
HANDLE ASSEMBLY / SQUEEGEE SYSTEM	B-3.3.1-7
SQUEEGEE ASSEMBLY	B-3.3.1-9
WET FLOOR NOZZLES	B-3.3.1-11
SPECIAL NOZZLES	B-3.3.1-13
TUBES AND HOSES	B-3.3.1-15
WIRING DIAGRAMS	B-3.3.2-1

WHEN ORDERING PARTS

- * Use the 8 digit numbers from the "Ref. No." columns in this parts list.
- * Specify the model and serial number of the machine.
- * Use the space below to record the model and serial number for future reference.

Model _____ Serial No. _____

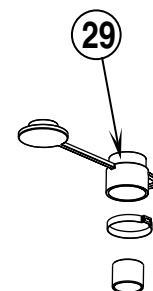
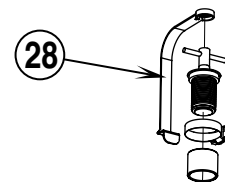
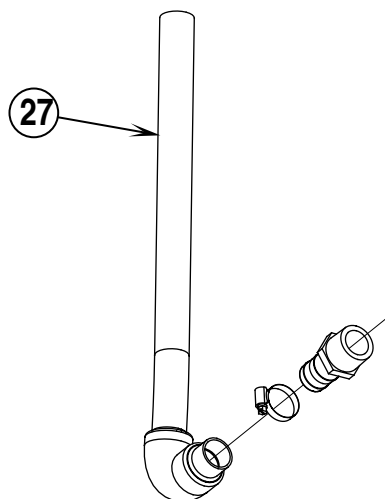
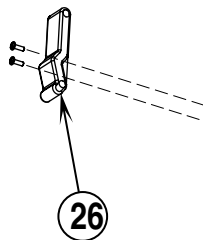
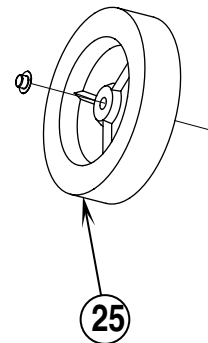
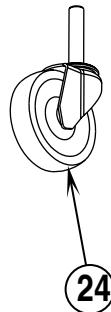
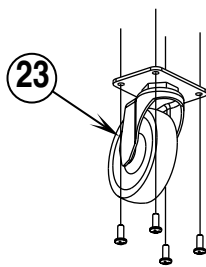


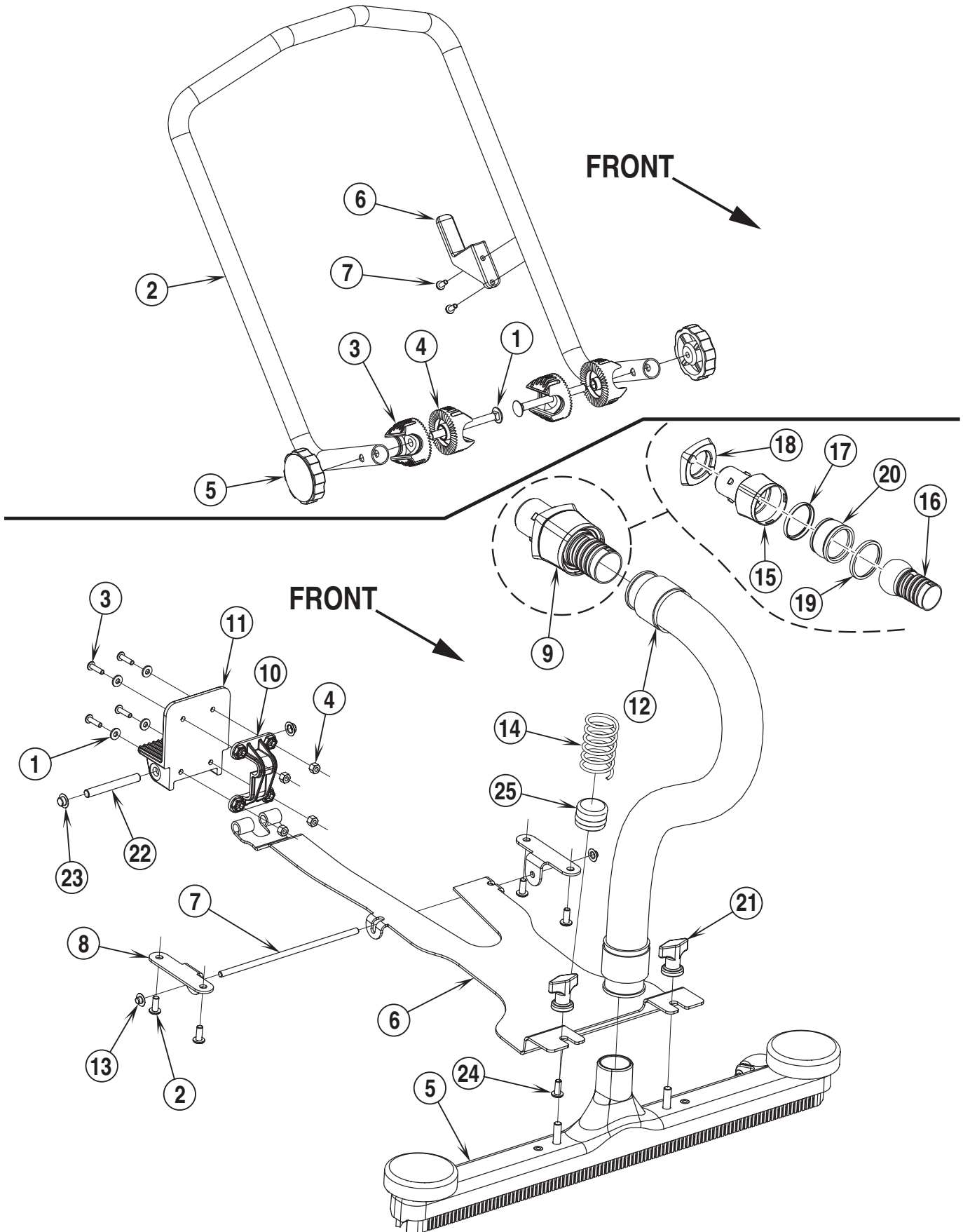
97-2	MOTORHEAD SYSTEM	BOOK B		
99-10	GW 1020, 1030	B	3.3.1	3

Item	Ref. No.	Qty	Description	Item	Ref. No.	Qty	Description
1	56002397	1	Scr, Hex Hd 1/4-20 x 2.75	39	56209391	2	Carbon Brush Assembly (240V)
2	56002603	2	Scr, Hex Hd 1/4-20 x 3.00		56209393	2	Carbon Brush Assembly (100V)
3	56002859	7	Wsh, Flt SAE SS 1/4	40	56209394	2	Cap Clip (240V)
4	56002880	4	Scr, Hex Loc SS 1/4-20 x 1.75		56209395	2	Cap Clip (100V)
5	56009011	1	Wsh, Int SHPRF #10 (120V)	41	56209396	1	Brush End Bracket
6	56009012	1	Scr, Hex Thd Form 10-24 x .38 (120V)	42	56209397	2	Assembly Screw
7	56009038	2	Scr, Hex Thd Form 10-24 x .88	43	56209398	2	Brush Screw
8	56009039	6	Scr, Hex Thd Form 10-24 x .50	44	56209400	1	Chamber (240V)
9	56009205	2	Wsh, Flt SS #10		56209399	1	Chamber (100V)
10			Intentionally Omitted	45	56209401	2	Impeller
11	56209284	1	Silencer, Outlet Air	46	56209402	1	Pre-Load Spring
12	56209285	1	Cover, Inlet Seal	47	56209403	1	Nut
13	56209286	1	Seal, Foam	48	56209404	1	Washer
14	56209288	1	Float	49	56209300	1	Filter, Dry Pick-up (optional)
15	56209290	1	Gasket, Cover				
16	56209291	1	Gasket, Motor				Vac Motor Replacement Kits (#18)
17	56209292	1	Gasket, Motor Face		56209386	1	220-240V
18	56209303	1	Motor, Vacuum 240V		56209385	1	110-120V
			(#36-48 for replacement parts)		56209387	1	100V
*	56209299	1	Capacitor, .22 MFD				
	56209307	1	Motor, Vacuum 120V (US)		56209640	1	Power Switch Service Kit (#21)
	56209657	1	Motor, Vacuum 120V (UK)				
*	56209653	1	RFI Filter (120V UK)				Power Cord Kits (#25)
	56209293	1	Motor, Vacuum 100V		56209634	1	Schuko 230V
19			Intentionally Omitted		56209635	1	Australian 230V
20	56209320	1	Filter, Sound		56209636	1	Swiss 230V
21	56209321	1	Switch, Rocker DPST		56209637	1	Italian 230V
22	56209334	4	Retainer, Float Cover		56209638	1	UK 230V
23	56209337	1	Handle, Assy, Motorhead		56209639	1	Japanese 100V
24	56209339	1	Coupling, Hose Inlet				
25	56209340	1	Cord Set (Schuko)				Motorheads (#1-48)
	56209424	1	Cord Set (Australia)		56209687	1	Motorhead, 120V, US
	56209421	1	Cord Set (Swiss)		56209688	1	Motorhead, 120V, UK
	56209422	1	Cord Set (Italy)		56209689	1	Motorhead, 230V, Schuko
	56209419	1	Cord Set (UK)		56209690	1	Motorhead, 230V, UK
	56209341	1	Cord Set (100V)		56209691	1	Motorhead, 230V, Swiss
	56209342	1	Cord Set (120V)		56209692	1	Motorhead, 230V, Italy
26	56209347	1	Cover Assy, Inner		56209693	1	Motorhead, 230V, Aus
27	56209348	1	Cover Assy, Middle		56209695	1	Motorhead, 100V Jap
28	56209349	1	Cover Assy, Outer				
29	56209460	1	Deflector, Inlet		56209641	1	Handle Kit (#23)
30	56209492	1	Foam, Acoustical Cooling Air		56209644	1	Cover Gasket Kit (#15)
31	56209494	1	Foam, Acoustical Cooling Air		56209522	1	Deflector Assembly Kit (#15, 24, 29)
32	56209497	1	Foam, Acoustical Exit Air		56209643	1	Dry Filter Kit (#49)
33	56209500	1	Foam, Acoustical Working Air		56209475	1	Float Kit (#8, 14, 22)
34	56209517	2	Grommet, Motor				
35	56250579	1	Wire Assy 14AWG (120V US)				* = Not Shown
36	56209405	1	Ball Bearing				
37	56209389	1	By-Pass Cap				
38	56209390	1	Cooling Fan				

Item	Ref. No.	Qty	Description	Item	Ref. No.	Qty	Description
GW 1030 Tank System				GW 1020 Tank System			
1	56002438	4	Scr, Hex Hd 8-32 x .50	16	56002438	4	Scr, Hex Hd 8-32 x .50
2	56009005	1	Scr, Pan Phil SS Plastite 10-16 x .75	17	56009097	2	Cap, Stud
3	56009097	2	Cap, Stud	18	56209296	1	Axle, Wheel
4	56131601	2	Clamp, Hose SAE #16	19	56209345	1	Tank, GW 1020 (20 Liter)
5	56209296	1	Axle, Wheel	20	56209480	2	Caster
6	56209302	1	Hose, Drain	21	56210148	2	Wheel
7	56209306	1	Fitting	22	56462316	2	Latch, Draw
8	56209346	1	Tank, GW 1030 (30 Liter)	23	56209543	1	Caster Wheel Kit
9	56209480	2	Caster, 3 Inch	24	56209651	1	Caster Wheel Kit
10	56209506	1	Drain Plug	25	56209542	1	Rear Wheel Kit
11	56209547	1	Clamp, One Ear	26	56209541	1	Draw Latch Kit
12	56261266	1	Plug Tube	27	56209544	1	Drain Hose Kit, GW 1030
13	56324349	1	Hook (Drain Hose Hanger)	28	56209545	1	Drain Plug Kit, GW 1030
14	56210148	2	Wheel	29	56209652	1	Drain Plug Kit, GW 1030
15	56462316	2	Latch, Draw				

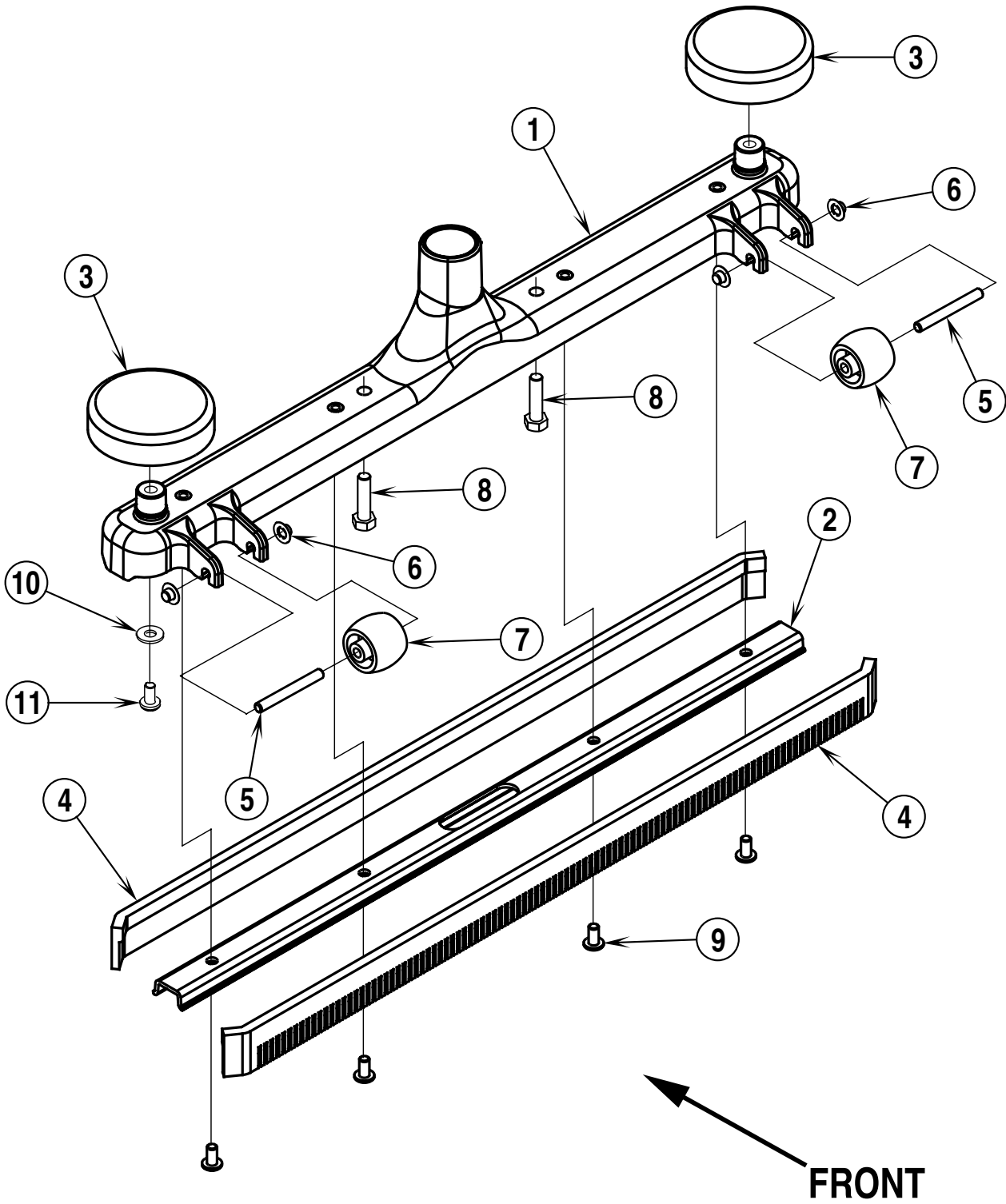
* = Not Shown





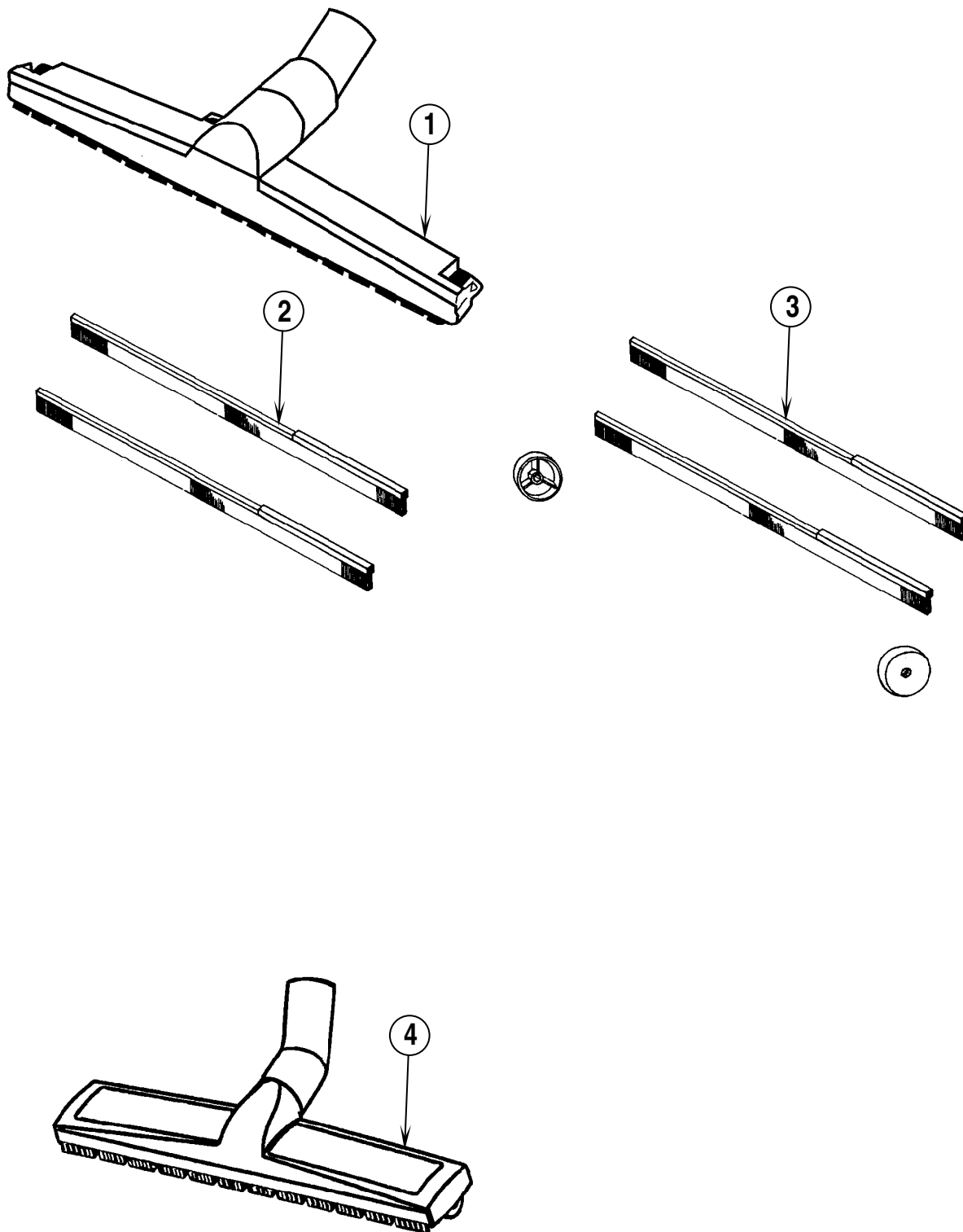
97-2	HANDLE ASSEMBLY / SQUEEGEE SYSTEM	BOOK B		
02-7	GW 1020, 1030	B	3.3.1	7

Item	Ref. No.	Qty	Description
	56209329	1	Handle Assembly (#1-5)
1	56009227	2	Scr, Carriage 5/16-18 x 3.50
2	56209297	1	Handle Tube
3	56264118	2	Ratchet
4	56264123	2	Ratchet
5	56302167	2	Knob
6	56262518	1	Hook, Cord
7	56009029	2	Scr, Pan Phil Thd Form 10-24 x .50
	56209539	1	Handle Ratchet Kit (#1, 3-5)
			Squeegee System (Optional / Standard on Air Scoop)
1	56001954	4	Wsh, Flt SAE #10
2	56002066	4	Scr, Pan Phil 1/4-20 x .62
3	56002192	4	Scr, Pan Phil 10-24 x .75
4	56002832	4	Nut, Hex Nyl Loc-Thin 10-24
5	56209088	1	Squeegee Assembly (see associated pages)
6	56209305	1	Arm, Squeegee
7	56209308	1	Axle, Squeegee
8	56209309	2	Bracket, squeegee
9	56209310	1	Adaptor Assembly, Hose Outlet (#15-20) TSBUS2002-815
10	56209331	1	Cam, squeegee Lift
11	56209332	1	Pedal
12	56209333	1	Hose, Squeegee
13	56009132	2	Cap, Stud
14	56209298	1	Compression Spring
15	56209314	1	Coupling, Hose Outlet TSBUS2002-815
16	56209318	1	Coupling Adaptor, Hose Outlet TSBUS2002-815
17	56209328	1	Ring, Inner TSBUS2002-815
18	56209330	1	Seal, Hose Inlet TSBUS2002-815
19	56209335	1	Ring, Outer TSBUS2002-815
20	56209336	1	Retainer, Rubber TSBUS2002-815
21	56370711	2	Nut, Thumb
22	56209160	1	Axle, Pedal
23	56009123	2	Nut, Push Cap 3/8
24	56009005	1	Scr, Pan Phil SS Type B 10-16 x .75
25	56209382	1	Housing, Spring
	56209546	1	Squeegee Kit, GW 1030 (#1-25)
	56209538	1	Squeegee Blade Kit, GW 1030



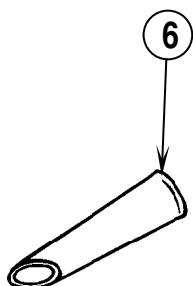
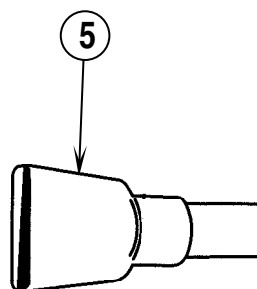
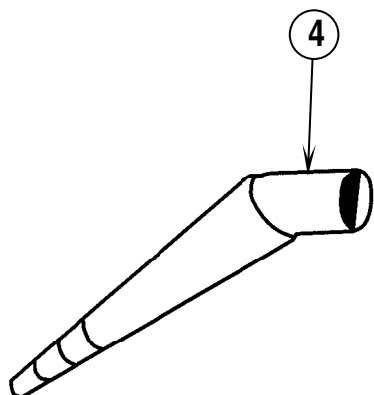
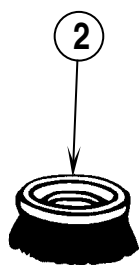
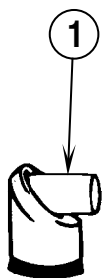
97-2	SQUEEGEE ASSEMBLY	BOOK B		
99-10	GW 1020, 1030	B	3.3.1	9

Item	Ref. No.	Qty	Description
	56209088	1	Squeegee Assembly (#1-11)
1	56209155	1	Housing, Squeegee
2	56209130	1	Retainer, Squeegee
3	56209157	2	Bumper, Side Roller
4	56105533	2	Blade
5	56209150	2	Axle
6	56009132	4	Nut, Push Cap 1/4
7	56329554	2	Roller
8	56002884	2	Scr, Hex Hd SS 5/16-18X1.25
9	56003119	4	Scr, Pan Phil SS 1/4-20X.50
10	56009205	2	Wsh, Flt SS #10
11	56009226	2	Scr, Pan Phil Type 25 SS 10-16 x .38
	56209538	1	Squeegee Blade Kit, GW 1030 (#4)



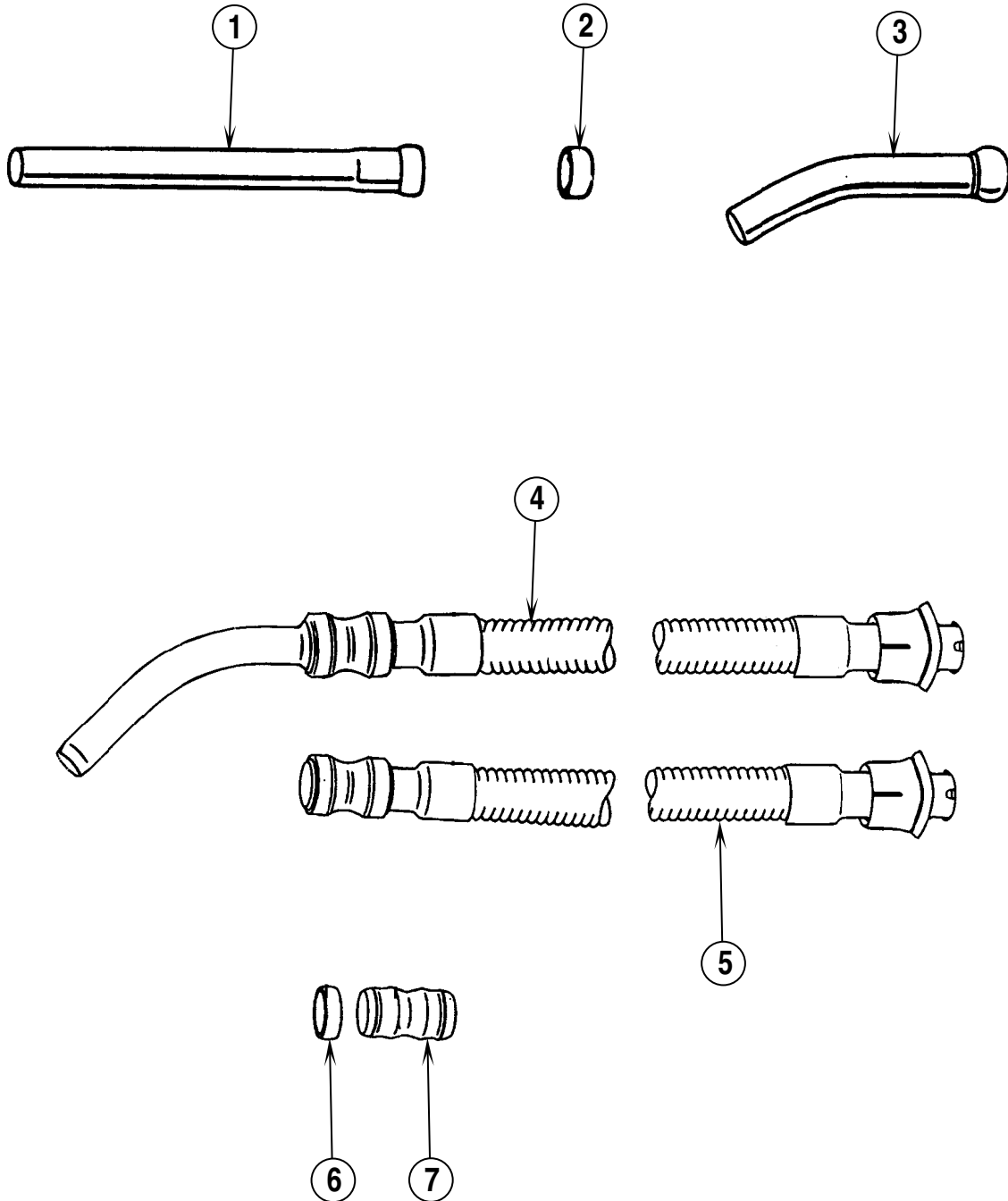
97-2	WET FLOOR NOZZLES	BOOK B		
99-10	GW 1020, 1030	B	3.3.1	11

Item	Ref. No.	Qty	Description
1	82168000	1	Wheeled wet floor nozzle, 3845, ø38, with adjustable rubber blades. Mat: Oil resistant rubber (black)
2	221184401	1	Set of rubber blades for nozzle Ref. No. 82168000 Mat: Oil resistant rubber (black)
3	221167000	1	Set of rubber blades, Mat: Oil resistant rubber (black), and wheels for nozzle Ref. No. 82168000
4	12126700	1	Wheeled wet floor nozzle 3836, ø38mm with rubber blades



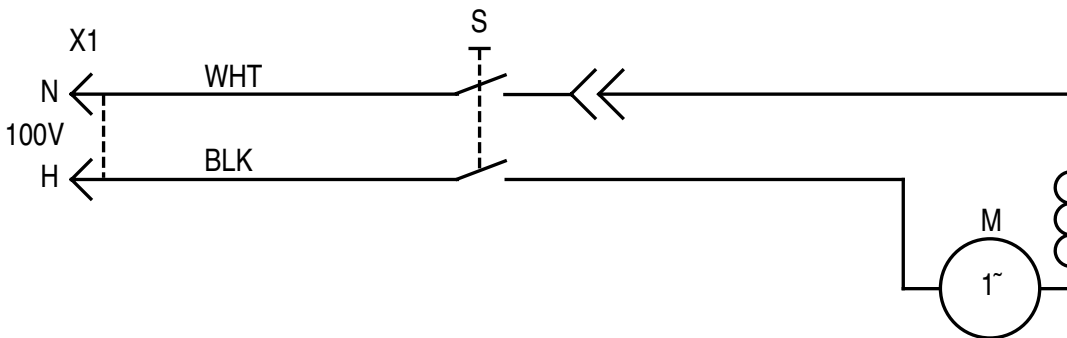
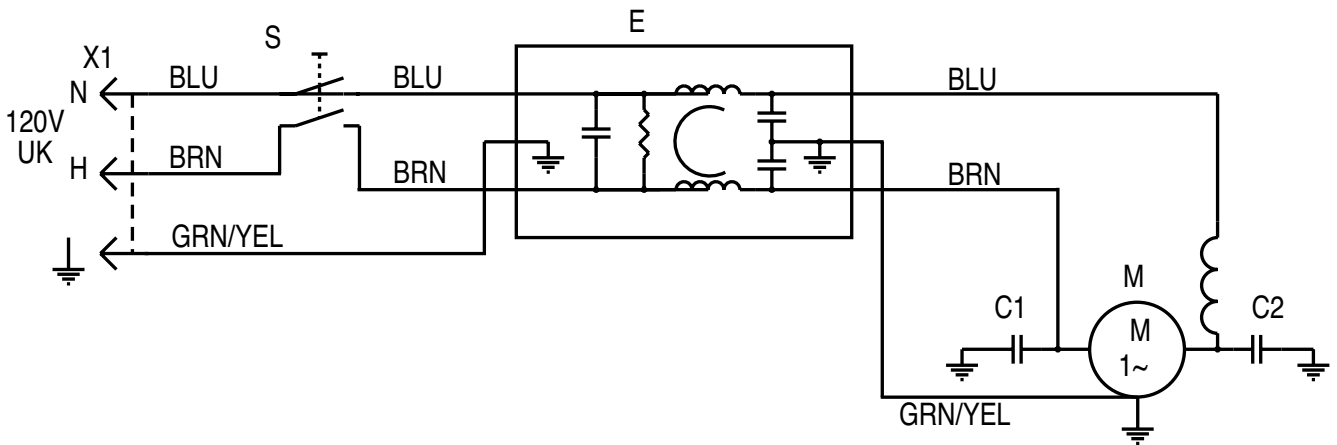
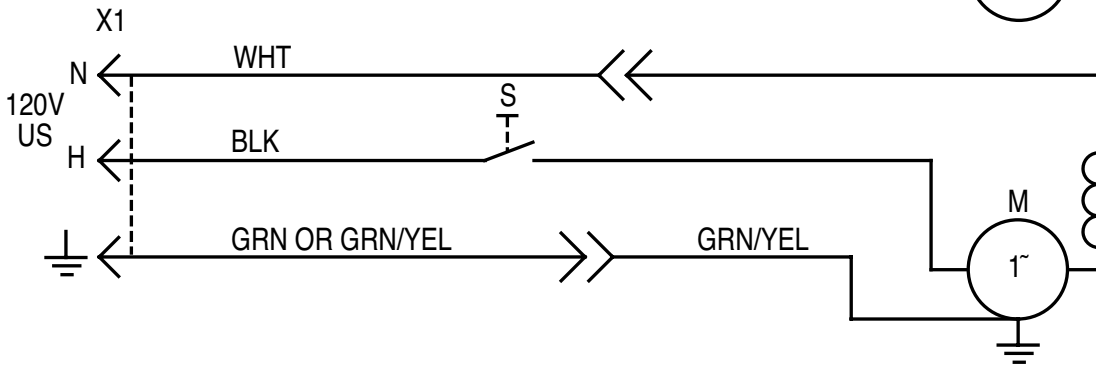
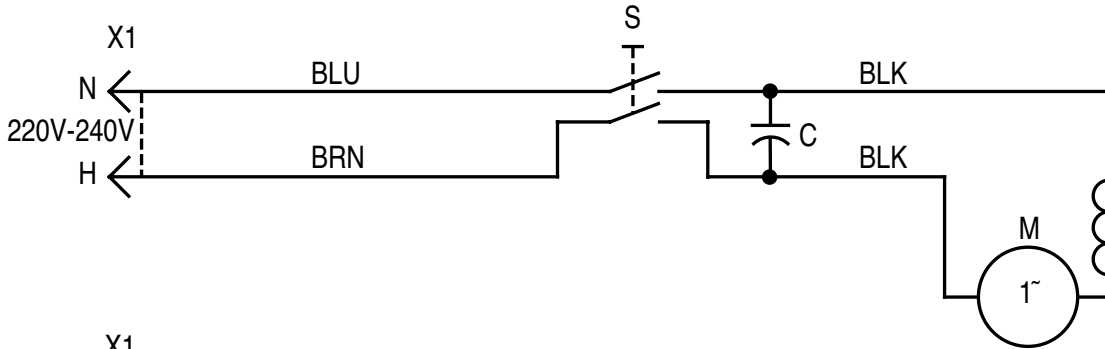
97-2	SPECIAL NOZZLES	BOOK B		
99-10	GW 1020, 1030	B	3.3.1	13

Item	Ref. No.	Qty	Description
1			Round Brush Turnable with:
	10950200	1	Black Bristles, Mat: Polypropylene, PP
	10950201	1	Red Bristles, Mat: Polyester, PBT
	10950202	1	Green Bristles, Mat: Polyester, PBT
	10950203	1	Blue Bristles, Mat: Polyester, PBT
2			Brush with:
	80630800	1	Black Bristles, Mat: Polypropylene, PP
	80630801	1	Red Bristles, Mat: Polyester, PBT
	80630802	1	Green Bristles, Mat: Polyester, PBT
	80630803	1	Blue Bristles, Mat: Polyester, PBT
3	80950300	1	Socket, Mat: Socket: EPDM / Rubber Tube: Acetal
4	82167900	1	Cone, Flexible Nozzle, ø38mm, Mat: Oil Resistant Rubber (black)
5	82169700	1	Gulper Nozzle, opening 25 x 90 mm, ø38mm, Mat: Oil Resistant Rubber (black)
6	02956200	1	Cone, ø38mm, Mat: Oil Resistant Rubber (black)



97-2	TUBES AND HOSES	BOOK B		
99-10	GW 1020, 1030	B	3.3.1	15

Item	Ref. No.	Qty	Description
1	11916000	1	Tube, ø38mm with friction ring, Mat: Stainless Steel, Length: 630mm
2	81192300	1	Friction Ring
3	71917000	1	Curved Tube, ø38mm, Mat: Stainless Steel
4	12126601	1	ø38mm Plastic Hose with ø38mm curved tube in stainless steel and ø38mm GS coupling
5	12174900	1	ø38mm Plastic Hose with rubber muff and ø38mm GS coupling
6	80943500	2	Ring for muff
7	80943400	1	Muff, ø38mm, Mat: Rubber



97-2	WIRING DIAGRAMS	BOOK B		
99-10		GW 1020, 1030	B	3.3.2

Item	Ref. No.	Qty	Description
220V-240V			
C	56209299	1	Capacitor, .22 MFD
S	56209321	1	Switch, Rocker (main power)
M	56209303	1	Motor, Vacuum 240V
120V US			
S	56209321	1	Switch, Rocker (main power)
M	56209307	1	Motor, Vacuum 120V (US)
120V UK			
S	56209321	1	Switch, Rocker (main power)
E	56209653	1	RFI Filter (120V UK)
M	56209657	1	Motor, Vacuum 120V (UK / includes C1 & C2)
C1	56209654	1	Capacitor, 1000 PF
C2	56209654	1	Capacitor, 1000 PF
100V			
S	56209321	1	Switch, Rocker (main power)
M	56209293	1	Motor, Vacuum 100V

DANMARK

Nilfisk-Advance Nordic A/S
Sognevej 25 - Box 344
DK-2605 Broendby
☎ 43 23 83 50 – Fax 43 42 15 95

NORGE

Nilfisk-Advance AS
Enebakkvn, 119, 0680 Oslo, Postboks 196, Manglerud,
0612 Oslo
☎ 22 08 63 50 – Fax 22 08 63 63
Distriktsrepresentanter over hele landet

SVERIGE

Nilfisk-Advance AB
Sjöbjörnsvägen 5, 117 67 Stockholm
☎ 085 55 944 00 – Fax 085 55 944 30

FINLAND/ SUOMI

BERNER Ltd. Facotek Department
Etäläranta 4B, 00130 Helsinki
☎ +358 9 1345 1382

AUSTRALIA

Nilfisk-Advance Pty. Ltd.
ACN 003 762 623
Head office: 17 Leeds Street, Rhodes, N. S. W. 2138
☎ (02) 9736 1244 – Fax (02) 9736 3910
Customer Responce Centre:
☎ 1 800 011 013

BELGIQUE / BELGIË/ LUXEMBOURG

Nilfisk-Advance s.a./n.v.
Doornveld/ Sphere Business Park
Industrie Asse 3, nr 11 – bus 41
1731 Zellik-Asse
☎ (02) 467.60.50 Fax (02) 463.44.16

CANADA

Nilfisk-Advance Ltd.
396 Watline Avenue
Mississauga, Ontario L4Z 1X
☎ (905) 712-3260 – Fax (905) 712-3255

DEUTSCHLAND

Nilfisk-Advance AG
Siemensstraße 25-27
25462 Rellingen
☎ (041 01) 3990 – Fax (04101) 399191
Zentraler Kundenservice
☎ für die Industrie: 0180 535 67 97
☎ Institutionen und Gebäudereiniger: 0180 500 11 70

FRANCE

Nilfisk-Advance S.A.
BP 246
91944 Courtaboeuf Cedex
☎ (01) 69.59.87.00 Télécopie (01) 69.59.87.01

HONG KONG

Nilfisk-Advance Ltd.
2001, 20/F HK Worsted Mills
Industrial Building
31-39 Wo Tong Tsui Street
Kwai Chung, N.T.
☎ 2427 59 51 – Fax 2487 5828

IRELAND

Nilfisk-Advance Ltd.
28 Sandyford Office Park
Dublin 18
☎ +353 1 2943838 – Fax +353 1 2943845

JAPAN

Nilfisk-Advance Inc.
3-4-9 Chigasaki Minami
Tsuzuki-Ku Yokohama 224
☎ 045-942-7741 – Fax 045-942-6545

MALAYSIA

Nilfisk-Advance Sdn Bhd
Lot 2, 1st. Floor
Lorong 19/1A
46300 Petaling Jaya
Selangor Darul Ehsan
☎ 03-7568188 /03-7568189 /03-7568388 – Fax 03-7566828

NEDERLAND

Nilfisk-Advance B.V.
Flevolaan 7, Postbus 341
1380 AH Weesp
☎ 0294-462121 – Fax 0294-430053

NEW ZEALAND

Nilfisk-Advance Limited
477 Great South Road, Penrose
Auckland
☎ (09) 525 0092 – Fax (09) 525 6440

SCHWEIZ / SUISSE

Nilfisk-Advance AG
Ringstrasse 19, 9533 Kirchberg/Wil
☎ 719 23 52 83 – Fax 719 23 84 44

SINGAPORE

Nilisk-Advance Pte. Ltd.
22, Woodlands Industrial Park E1
Singapore 757740
☎ (65) 759 9100 – Fax (65) 759 9133

TAIWAN

Nilfisk-Advance Ltd.
1 F, No.23, Lane 132, Sec. 2
Ta An Road, Taipei
☎ 700 22 68 – Fax 784 08 43

UNITED KINGDOM

Nilfisk-Advance Limited
Newmarket Road
Bury St. Edmunds
Suffolk IP 33 3SR
☎ (01284) 763163 – Fax (01284) 750562

USA

Nilfisk-Advance Inc.
14600 21st Avenue North
Plymouth, MN 55447-3408
☎ +1 800 989 2235 – Fax 1 800 989 6566

Nilfisk-Advance of America, Inc.

300 Technology Drive
Malvern, PA 19355
☎ (610) 647 647-6427

ÖSTERREICH

Nilfisk-Advance GmbH
Vorarlberg Allee 46
1230 Wien
☎ 1 616 58 30 – Fax 1 616 58 30 40

ESPAÑA

Nilfisk-Advance, S.A.
Torre D'Ara
Passeig del Rengle, 5 Pl.9-10
E-08302 – Mataró (Barcelona)
☎ Tel. 93 741 24 00 – Fax: 93 757 80 20
Central atención al cliente: 902 200 201
nilfisk@nilfisk-advance.es – www.nilfisk-advance.com
Distribuidores y Servicio Técnico en toda España y Andorra

ITALIA

Nilfisk-Advance Italia Spa
Località Novella Terza
26862 Guardamiglio (LO)
Italy
☎ +39 0377 414067-54 – Fax +39 0377 414097
www.nilfisk-advance.com

PORTUGAL

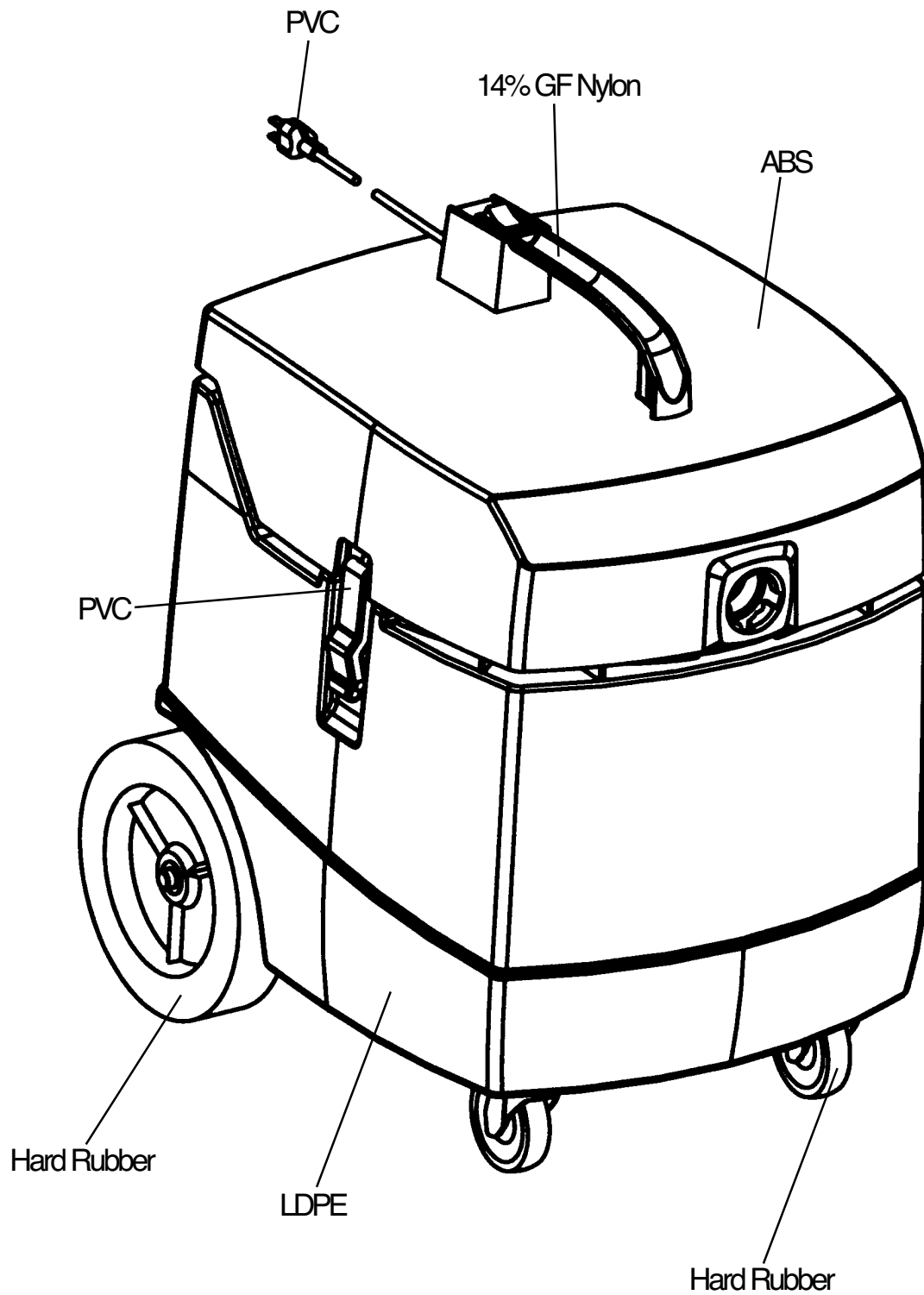
Nilfisk-Advance Lda.
Rua Cândido de Figueiredo, 91-i, 1500-133 LISBOA
☎ 01/7784142 – Fax 01/7785613
Porto 02/526766 – Fax 02/520739
Açores 096/628092/3 – Fax 096/628129
Madeira 091/228965 – Fax 091/228796

GREECE

Embiom S.A.
Λεωφ. Βουλιαγμένης 60
Αργυρούπολη
164 52 Αθήνα
☎ 9950613 - Fax 9951680



Material composition of the Nilfisk GW 1020



Material composition of the Nilfisk GW 1030 / GW 1030AS

