



Electronic Service Manuals

This electronic document is provided as a service to our customers. We do not create the contents of the information contained in this document. Should you have detailed questions pertaining to the information contained in this document, you may contact Michco, or the manufacturer which provided the original information in this electronic deliverable. Michco's only part in this electronic deliverable was the electronic assembly process.

You may contact Michco through the following methods:
Phone (517) 484-9312 or (800) 331-3339 MI, OH, IN only
2011 N. High St. -- Lansing, Michigan -- 48906
Fax: (517) 484-9836
Email: CustServ@Michco.com
Web site: www.Michco.Com
Parts Web site: www.FloorMachineParts.Com

Order Parts on Line at:
www.FloorMachineParts.Com

Directly to Parts & Service:
By Email: **Shop@Michco.com**
By Fax: (517) 702-2041
By Voice: Use numbers above.

Serving the Cleaning Industry Since 1922

Notice: All copyrighted material remains property of original owners, all trademarks are property of respective owners. Manuals are subject to Manufacturer's reproduction limitations. Originals or reproductions were provided by manufacturers through a request. We make no warranty as to the correctness of information provided in this document and you assume all risk.

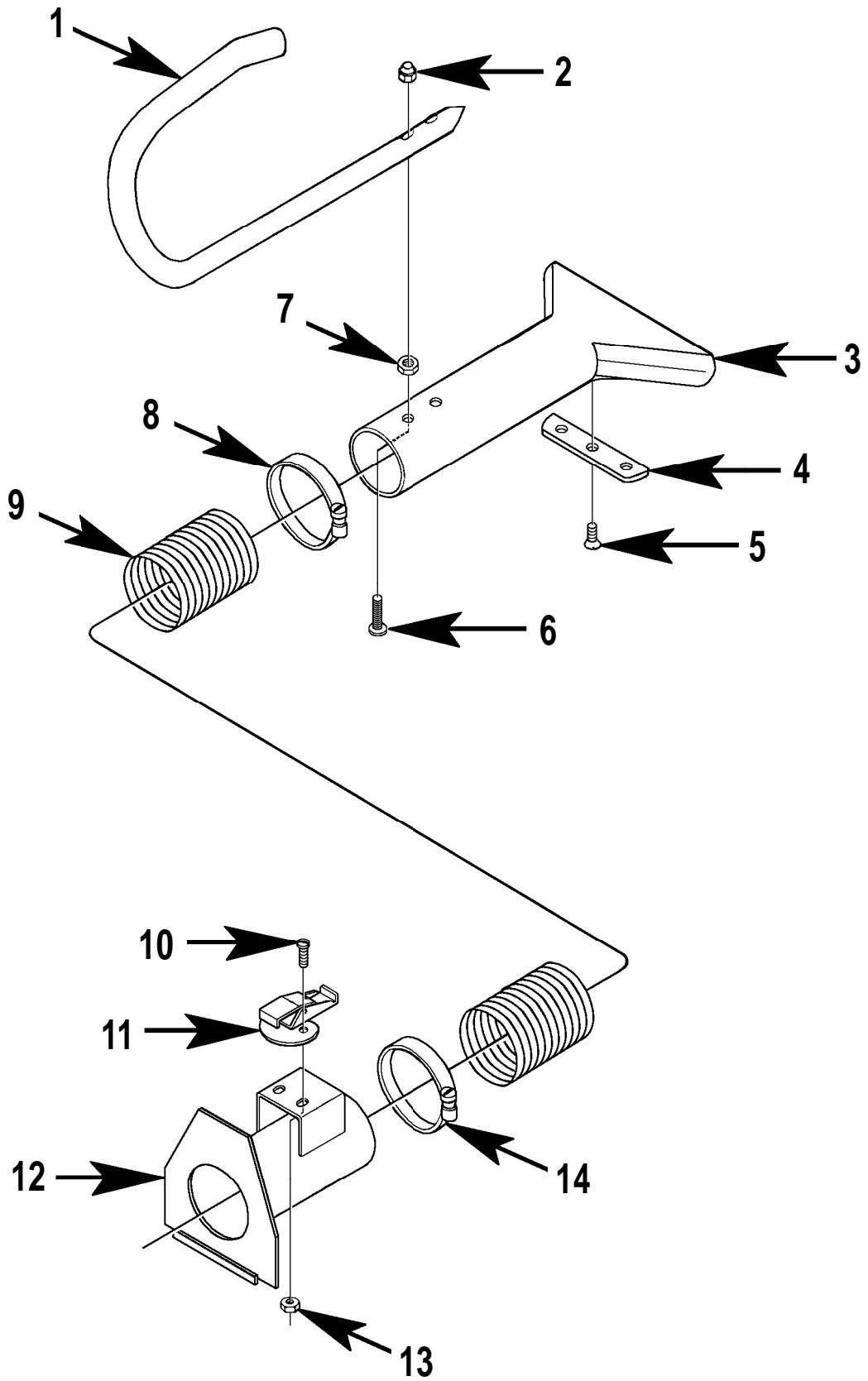
Roamer™ Accessories

PARTS LIST **3" & 6" Hose Attachments, Magnetic Bar**



**Nilfisk
Advance**
setting standards

7/92 FORM NO. 56042269



3" DIAMETER PICK-UP HOSE ATTACHMENT

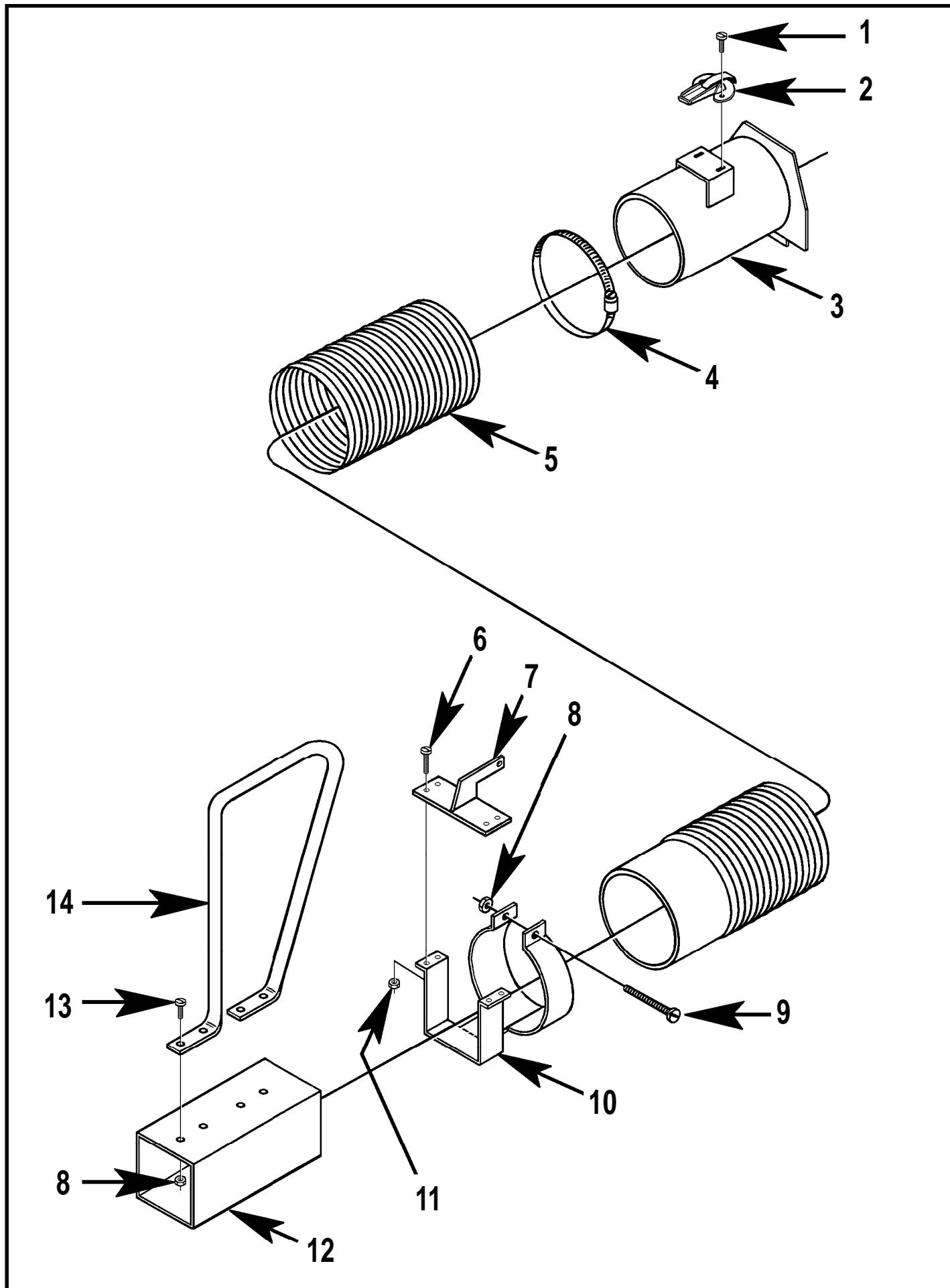
Item	Part No.	Qty	Description
	359884	1	Pick-Up Hose Attachment (#1-14)
1	359880	1	Handle
	359855	1	Handle Assembly (#1-8)
2		2	1/4-20 Acorn Nut
3	359856	1	Tool
4	353264	1	Shoe
5		3	#8-32 x 1/4 Screw
6		2	1/4-20 x 1-1/2 Screw
7		2	1/4-20 Hex Nut
8	352829	1	Hose Clamp
9	352802	15'	Hose, 3"
10		2	#10-24 x 1/2 Screw
11	371181	1	Fastener Clamp
12	359858	1	Hose Adapter, 3"
	359857	1	Hose Adapter Assembly (#10-14)
13		2	#10-24 Nut
14	352829	1	Hose Clamp

Assembly Instructions

- 1 Remove 2 acorn nuts (#2) from pick-up tool (#3) and attach handle (#1). Replace and tighten acorn nuts.
- 2 Loosen hose clamp (#8) and attach hose to pick-up tool and hose adapter.
- 3 With hose clamps in place near end of hose, tighten clamps securely.

To Attach Unit To Machine:

- 1 Turn off machine.
- 2 Release latch and remove front cover (see standard parts list).
- 3 Hook bottom flange on hose adapter over base of intake orifice, and lift up on hose, locking adapter inside of intake housing.
- 4 Hook fastener clamp (#11) into slot or over stud on top panel of intake housing.



6" DIAMETER PICK-UP HOSE ATTACHMENT

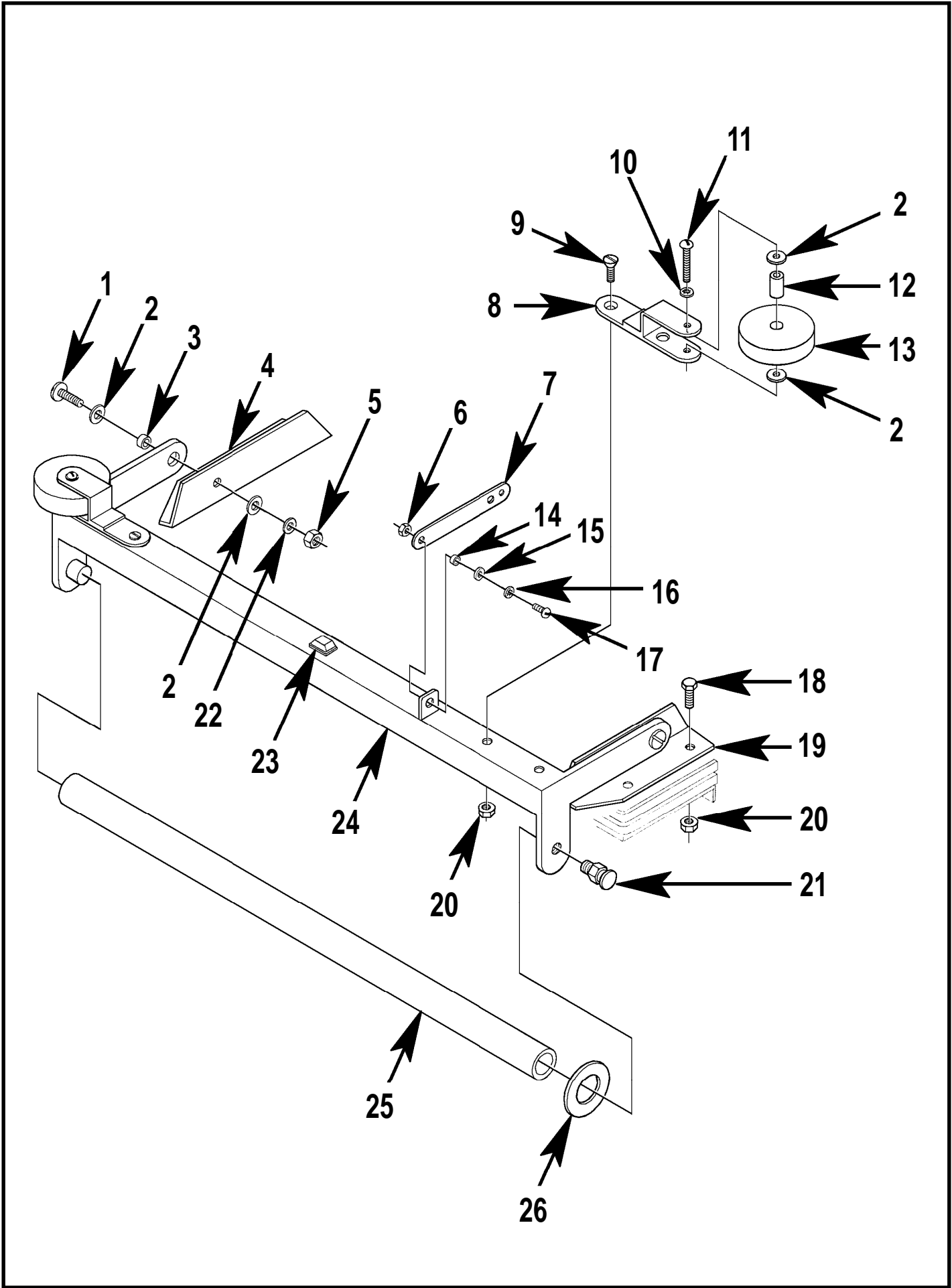
Item	Part No.	Qty	Description
	359885	1	Pick-Up Hose Attachment (#1-14)
1		2	#10-24 x 1/2 Screw
2	371181	1	Fastener Clamp
3	359879	1	Hose Adapter, 6"
	359878	1	Hose Adapter Assembly (#1-4)
4	355488	1	Hose Clamp
5	341355	10'	Hose, 6"
6	002192	4	#10-24 x 3/4 Screw
7	359876	1	Plate
8	002708	5	1/4-20 Lock Nut
9	002192	1	#10-24 x 2 Screw
10	359877	1	Clamp
11	002768	4	#10-24 Lock Nut
12	359859	1	Tool Weldment
13	002145	4	1/4-20 x 1/2 Screw
14	359860	1	Handle

Assembly Instructions

- 1 Attach handle (#14) to pick-up tool (#12) with screws (#13) and nuts (#8) provided in the kit.
- 2 Connect hose (#5) to hose adapter (#3) with clamp (#4).
- 3 Slip the other end of the hose into clamp (#10), fitting hose over pick-up tool.
- 4 Install plate (#7) on clamp (#10) using screws (#6) and nuts (#11).
- 5 Tighten all screws and nuts.

To Attach Unit To Machine

- 1 Turn off machine.
- 2 Release latch and remove front cover (see standard parts list).
- 3 Hook bottom flange (offset) on hose adapter (#3) over base of intake orifice, and lift up on the hose, locking the adapter inside of intake housing.
- 4 Hook fastener clamp (#2) into slot or over stud on top panel of intake housing.



MAGNETIC BAR ASSEMBLY

Item	Part No.	Qty	Description
	355244	1	Magnetic Bar Assembly (#1-26)
1		2	1/4-20 x 1 Screw
2	371009	8	1/4 Washer
3	366862	2	Bushing
4	355308	1	Right Mounting Bracket
5		2	1/4-20 Hex Nut
6		2	#10-24 Hex Nut
7	355395	1	Link
8	359868	2	Bracket
9		4	1/4-20 x 1/2 Screw
10		2	1/4 Shakeproof Washer
11		2	1/4-20 x 1-1/2 Screw
12	360139	2	Bushing
13	363855	2	Bumper
14	151092	2	Bushing
15		2	#10 Washer
16		2	#10 Shakeproof Washer
17		2	#10-24 x 1/2 Screw
18		4	1/4-20 x 1/2 Bolt
19	355316	1	Left Mounting Bracket
20		8	1/4-20 Flanged Lock Nut
21	365548	1	Lock
22		2	1/4 Lock Washer
23	382566	1	Bumper
24	355325	1	Holder, Magnetic Bar
25	341185	1	Magnetic Bar, 28"
26	341258	1	Stripping Washer