



Electronic Service Manuals

This electronic document is provided as a service to our customers. We do not create the contents of the information contained in this document. Should you have detailed questions pertaining to the information contained in this document, you may contact Michco, or the manufacturer which provided the original information in this electronic deliverable. Michco's only part in this electronic deliverable was the electronic assembly process.

You may contact Michco through the following methods:
Phone (517) 484-9312 or (800) 331-3339 MI, OH, IN only
2011 N. High St. -- Lansing, Michigan -- 48906
Fax: (517) 484-9836
Email: CustServ@Michco.com
Web site: www.Michco.Com
Parts Web site: www.FloorMachineParts.Com

Order Parts on Line at:
www.FloorMachineParts.Com

Directly to Parts & Service:
By Email: **Shop@Michco.com**
By Fax: (517) 702-2041
By Voice: Use numbers above.

Serving the Cleaning Industry Since 1922

Notice: All copyrighted material remains property of original owners, all trademarks are property of respective owners. Manuals are subject to Manufacturer's reproduction limitations. Originals or reproductions were provided by manufacturers through a request. We make no warranty as to the correctness of information provided in this document and you assume all risk.

Retriever™



PARTS LIST

Advance MODEL 134B(OBSOLETE)

This parts list is for machines after serial number 816014



**Nilfisk
Advance**

setting standards

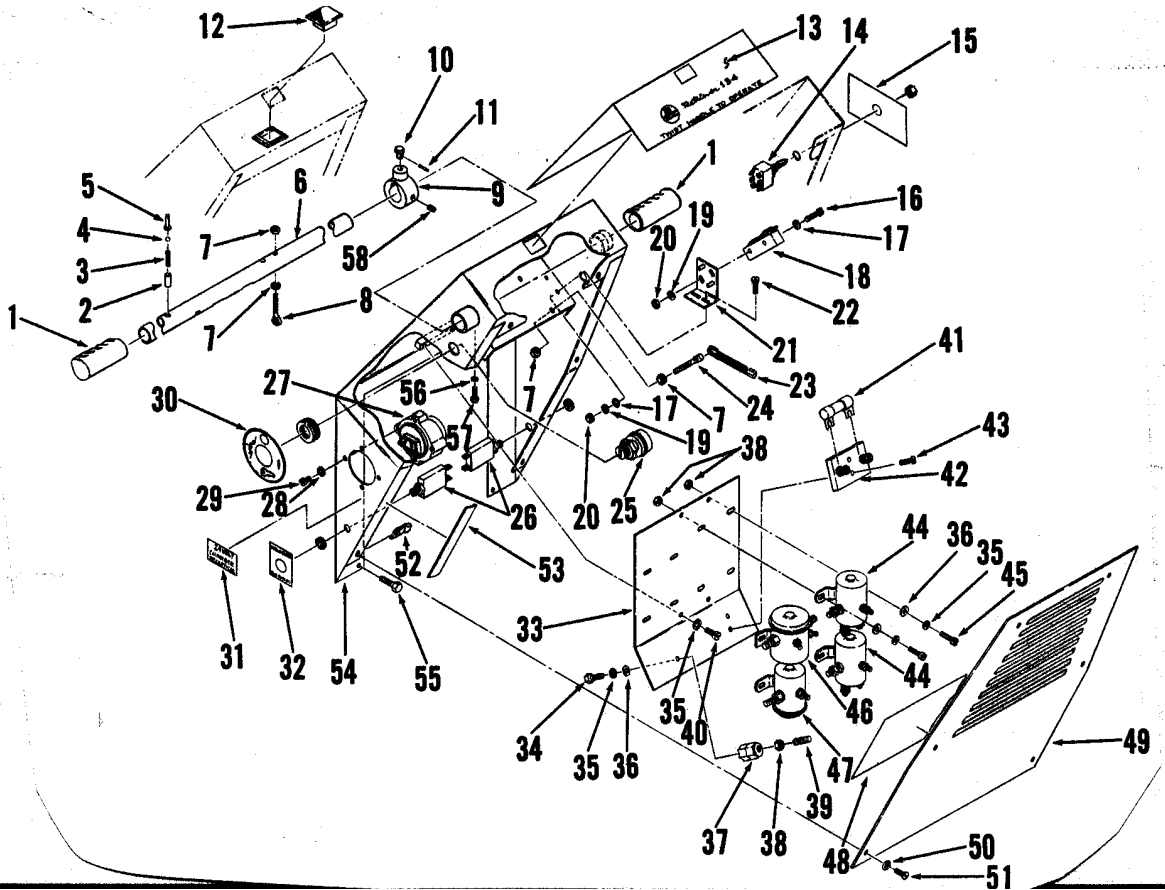
6/81 revised 2/01 FORM NO. 56042056

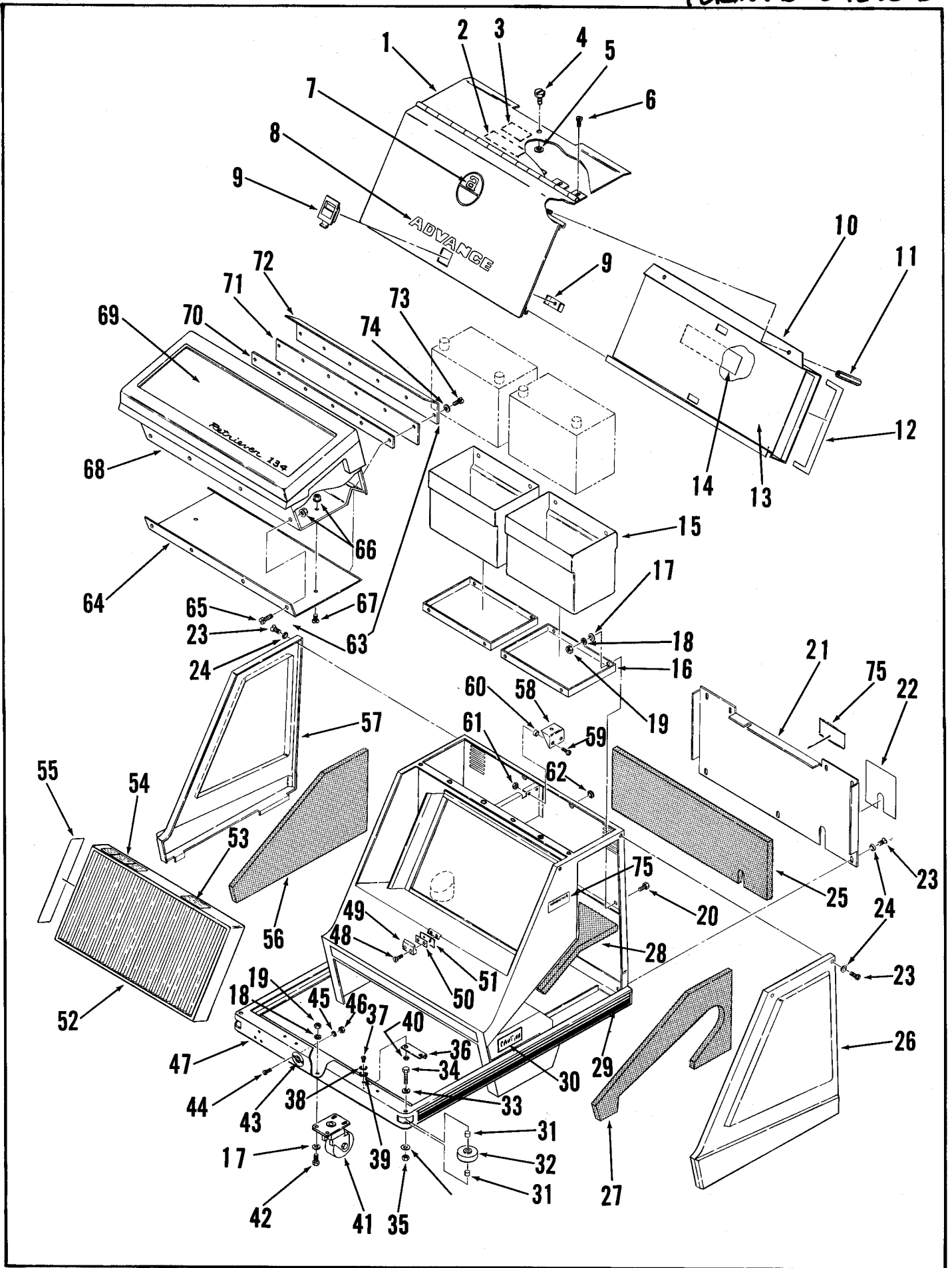
Index for Form Number 042056

Description	Location	page
Control Handle	E4	1
Filter, Hopper & Chassis	E5	2
Main Broom & Impellor	E7	4
Side Broom	E12	9
Skirts	E11	8
Wheel Drive	E9	6
Wiring Diagram	E13	10

CONTROL HANDLE ASSEMBLY

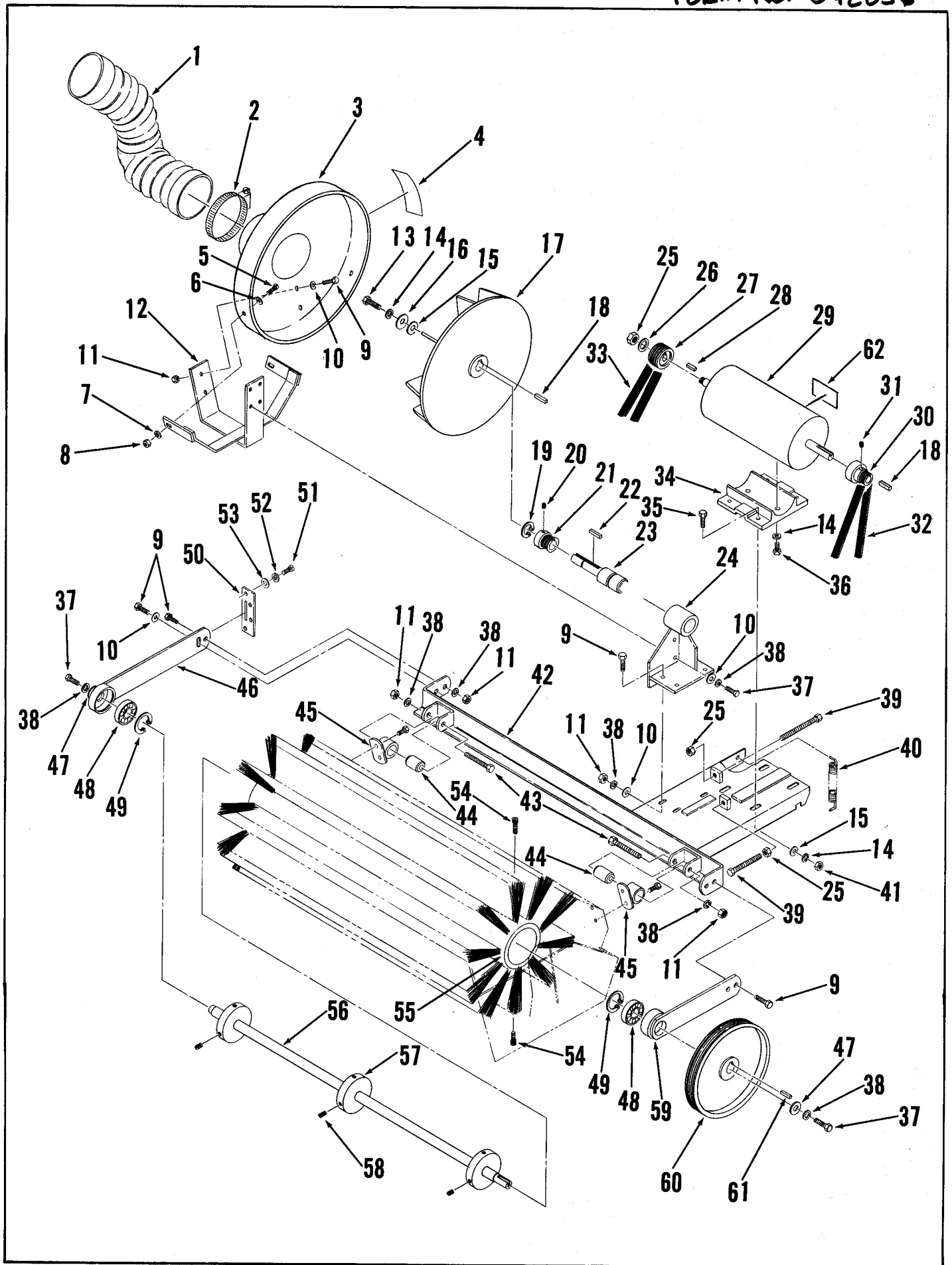
Item	Part No.	Qty	Description	Item	Part No.	Qty	Description
	467101	1	Handle Assembly			2	Screw, HP5 #8-32 x 5/8
1	514085	2	Grip, Handle	30	023330	1	Decal, Main Switch
2	172201	1	Bushing	31	054192	1	Decal, Charger
3	578222	1	Spring	32	015020	2	Decal, Reset
4	745866	i	Ball	33	467088	1	Plate, Solenoid
5	467086	1	Pin	34		1	Screw, Hex Head 1/4-20 x 3/8
6	467103	1	Tube, Handle	35		14	Washer, Lock 1/4
7		8	Nut, Whiz #10-24	36		18	Washer, Flat 1/4
8	467109	2	Stud	37	469858	1	Insulated Stand-Off
9	467072	1	Collar, Safety-Lock	38		9	Nut, Hex 1/4-20
	201405	i	Knob, Safety-Lock	39	150274	1	Stud, 1/4-20
11	201472	1	Pin, Spring	40		4	Screw, Pan Head 1/4-20 x 3/8
12	467410	1	Light, Indicator	41	448739	1	Fuse Clamp 40 Amp
13	023306	1	Decal, Control Panel	42	448741	1	Block, Fuse Clamp
14	754092	1	Switch, Main & Side Brooms	43		2	Screw, Flat Head #10-32 x 3/4
		1	Washer, Shakeproof 7/16			2	Nut, Whiz #10
15	023316	1	Decal, On-Off-On	44	470750	2	Solenoid, 24 Volt
16		6	Screw, Pan Head #6-32 x 7/8	45		8	Screw, Hex Head 1/4-20 x 5/8
17		12	Washer, Flat #6	46	468358	1	Solenoid, Switch 24V
18	171225	3	Switch, Snap SPST N.C.	47	371394	1	Solenoid, 24V
19		12	Washer, Lock #6	48	023328	1	Decal, Wiring
20		12	Nut, Hex #6-32	49	467228	1	Panel, Rear Handle
21	467380	3	Bracket, Switch Mounting	50	449340	6	Washer, Finishing #10
22		6	Screw, Pan Head #6-32 x 3/8	51		6	Screw, Oval Head #10-24 x 3/8
23	290580	2	Spring, Extension	52	328855	4	Nut, Spring #10-24
24	467412	2	Stud #10-24	53	320099	A/R	Gasket 1/8 x 3/8
25	441538	1	Switch, Key SPST	54	467078	1	Frame, Handle
	441538	1	Replacement Key dor Switch	55		4	Screw, Hex Head 1/4-20 x 1/2
26	454538	2	Circuit Breaker 15 Amp			4	Flat & Lock Washers, & Nut
27	386119	1	Receptacle, Charger	56		1	Washer, Shakeproof 5/16
28		4	Washer, Internal Tooth Lock #8	57	234079	1	Screw, Hex Head
29		2	Screw, HP5 #8-32 x 1-1/2	58		2	Screw, Socket Set 5/16-18 x 1/4





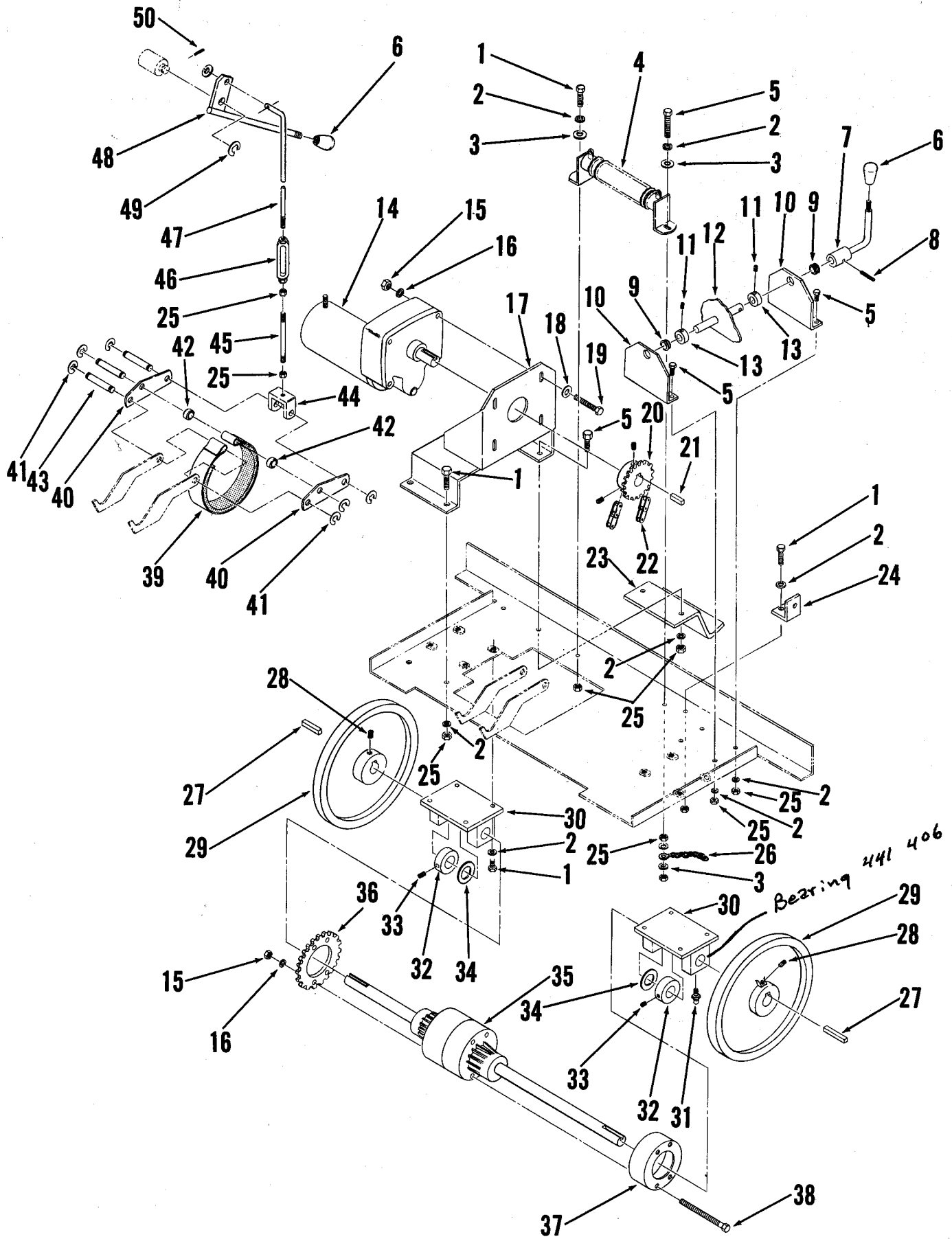
CHASSIS, HOUSING, AND RELATED PARTS

ITEM	PART NO	QTY	DESCRIPTION
1	467 048	1	DOOR, BATTERY & FILTER
2	023 312	1	DECAL, WARNING
3	016 116	1	DECAL, CAUTION
4	448 104	1	FASTENER, SCREW
5	448 108	1	WASHER, RETAINER
6		6	SCREW, PAN HD. # 10-24 x 1/2
7	023 308	1	DECAL, LOGO
8	016 519	1	DECAL, ADVANCE
9	761 160	1	LATCH, PADDLE
10	467 064	1	BRACKET
11	467 136	2	NUT
12	467 138	6	GASKET 3/16 x 3/8
13	467 133	1	SPACER
14	023 332	1	DECAL, SPACER
15	467 084	2	CASE, BATTERY
16	467 156	2	TRAY, BATTERY
17			WASHER, FLAT 1/4
18			WASHER, LOCK 1/4
19			NUT, HEX 1/4-20
20			SCREW, HEX HD. 1/4-20 x 1/2
21	467 210	1	PANEL, REAR
22	023 302	1	DECAL, BRUSH HEIGHT
23		17	SCREW, OVAL HD. # 10-24 x 3/8
24	449 340	17	WASHER, FINISHING # 10
25	467 193	1	FOAM, ACCOUSTICAL - BACK
26	467 222	1	SHROUD, LEFT
27	467 195	1	FOAM, ACCOUSTICAL
28	467 189	1	FOAM, ACCOUSTICAL, TOP LT.
	467 191	1	FOAM, ACCOUSTICAL, TOP RT.
29	023 300	2	DECAL, STRIPE
30	030 080	1	DECAL, HANDS CLEAR
31	109 037	4	BUSHING
32	322 156	2	WHEEL
33	150 142	4	WASHER
34		2	SCREW, HEX HD. 1/4-20 x 2 5/8
35	150 975	2	NUT, LOCK 1/4-20 UNC
36	467 258	2	PLATE
37		4	SCREW, FT. HD. # 10-24 x 1/2
38		4	WASHER, LOCK # 10
39		4	WASHER, FLAT # 10
40		4	NUT, HEX # 10-24
41	206 725	1	CASTER
42		4	SCREW, HEX HD. 1/4-20 x 3/4
43	754 090	1	RECEPTICAL 125V, 15A
44		2	SCREW, FLT. HD. # 6-32 x 3/8
45		2	WASHER, LOCK # 6
46		2	NUT, HEX # 6-32
47	467 090	1	CHASSIS WELDMENT
48		2	SCREW, FLT. HD. # 8-32 1/2
49	467 038	1	STRIKER
50	467 167	1	SHIM
51	467 153	1	SHIM
52	467 147	1	FILTER, PRIMARY <i>For Hospitals, use P/N 467 183</i>
53	023 326	1	DECAL, FILTER
54	023 334	1	DECAL, FILTER
55	023 320	1	DECAL, FILTER
56	467 197	1	FOAM, ACCOUSTICAL
57	467 220	1	SHROUD, RIGHT
58	448 109	1	PLATE, MOUNTING
59		2	SCREW, PAN HD. # 8-32 x 5/8
60	200 689	2	BUSHING
61		2	NUT, HEX FLANGE WHIZ # 8-32
62		4	GROMMET
63	467 171	1	HOPPER ASSEMBLY C/O
64	467 202	1	PLATE, WEAR
65		4	SCREW, PAN HD. # 10-24 x 1/2
66		6	NUT, FLANGE WHIZ # 10-24
67		2	SCREW, FLAT HD. # 10-24 x 1/2
68	467 010	1	HOPPER
69	023 304	1	DECAL, "RETRIEVER 134"
70	467 198	1	PLATE
71	467 200	1	SKIRT
72	467 196	1	ANGLE
73		1	SCREW, PAN HD. # 8-32 x 3/4
74		1	WASHER, LOCK # 8
75	023 318	3	DECAL, WARNING



MAIN BROOM & BRUSH DRIVE ASSEMBLY

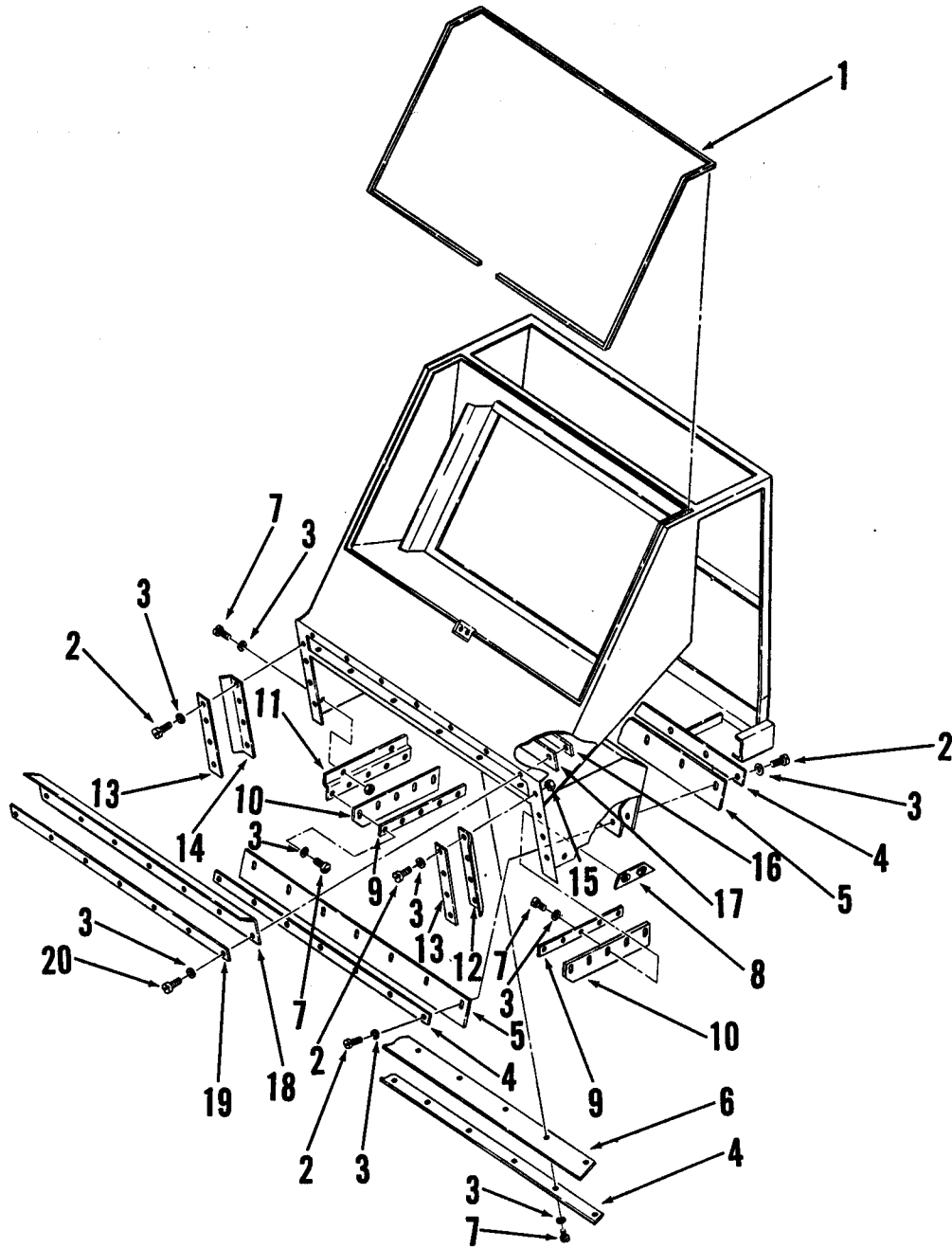
ITEM	PART NO	QTY	DESCRIPTION
1	467 181	1	HOSE, FLEX 3.00 x 17.50
2	352 829	2	CLAMP, HOSE
3	467 286	1	SHROUD
4	030 080	1	DECAL, "HANDS CLEAR"
5		2	SCREW, PAN HD. # 10-24 x 9/16
6		4	WASHER, FLAT # 10
7		2	WASHER, LOCK # 10
8		2	NUT, HEX # 10-24
9		9	SCREW, HEX HD. 1/4-20 x 3/4
10		9	WASHER, FLAT 1/4
11		11	NUT, HEX 1/4-20
12	467 476	1	BRACKET WELDMENT
13		1	SCREW, HEX HD. 5/16-18 x 3/4
14		7	WASHER, LOCK 5/16
15		5	WASHER, FLAT 5/16
16	152 781	1	WASHER
17	478 668	1	IMPELLER
18	367 958	2	KEY, SQUARE
19	748 905	1	RING, RETAINING
20		2	SCREW, SOCKET SET 5/16-18 x 1/4
21	467 548	1	SHEAVE, POLY-V
22	158 135	1	KEY, SQUARE
23	467 550	1	SHAFT & BEARING
24	467 442	1	BRACKET WELDMENT
25		3	NUT, HEX 3/8-16
26		1	WASHER, FLAT 3/8
27	467 372	1	SHEAVE, POLY-V
28	109 258	1	KEY, SQUARE
29	467 055	1	MOTOR, 24 VOLT
30	467 184	1	SHEAVE, POLY-V 6J12
31		2	SCREW, SOC. SET # 10-24 x 1/4
32	467 266	1	BELT, POLY-V
33	467 264	1	BELT, POLY-V
34	467 355	1	BASE, MOTOR
35		4	SCREW, HEX HD. 5/16-18 x 7/8
36		2	SCREW, HEX HD. 5/16-18 x 1/2
37		6	SCREW, HEX HD. 1/4-20 x 1/2
38		15	WASHER, LOCK 1/4
39	467 542	2	SCREW, HEX HD. 3/8-16 x 4 1/2
40	467 404	1	SPRING, EXTENSION
41		4	NUT, HEX 5/16-18
42	467 178	1	FRAME WELDMENT
43		2	SCREW, HEX HD. 1/4-20 x 2"
44	467 284	2	MOUNT, RUBBER
45	467 174	2	PIVOT WELDMENT
46	467 192	1	BRUSH ARM WELDMENT, R.H.
47	151 114	1	WASHER
48	372 773	2	BEARING, BALL
49	366 544	2	RING, RETAINING
50	467 350	1	GASKET
51		4	SCREW, PAN HD. # 8-32 x 3/8
52		4	WASHER, LOCK # 8
53		4	WASHER, FLAT # 8
54		6	SCREW, SOC. HD. CAP 1/4-20 x 1" & L.W.
55	467 057	1	BROOM, MAIN
56	467 182	1	SHAFT, BRUSH
57	467 504	3	DISC, BRUSH MOUNTING
58		3	SCREW, SOC. SET 1/4-20 x 1/2
59	467 194	1	BRUSH ARM WELDMENT L.H.
60	467 204	1	SHEAVE POLY-V 6J70
61	109 258	1	KEY, SQUARE
62	023 318	1	DECAL, WARNING



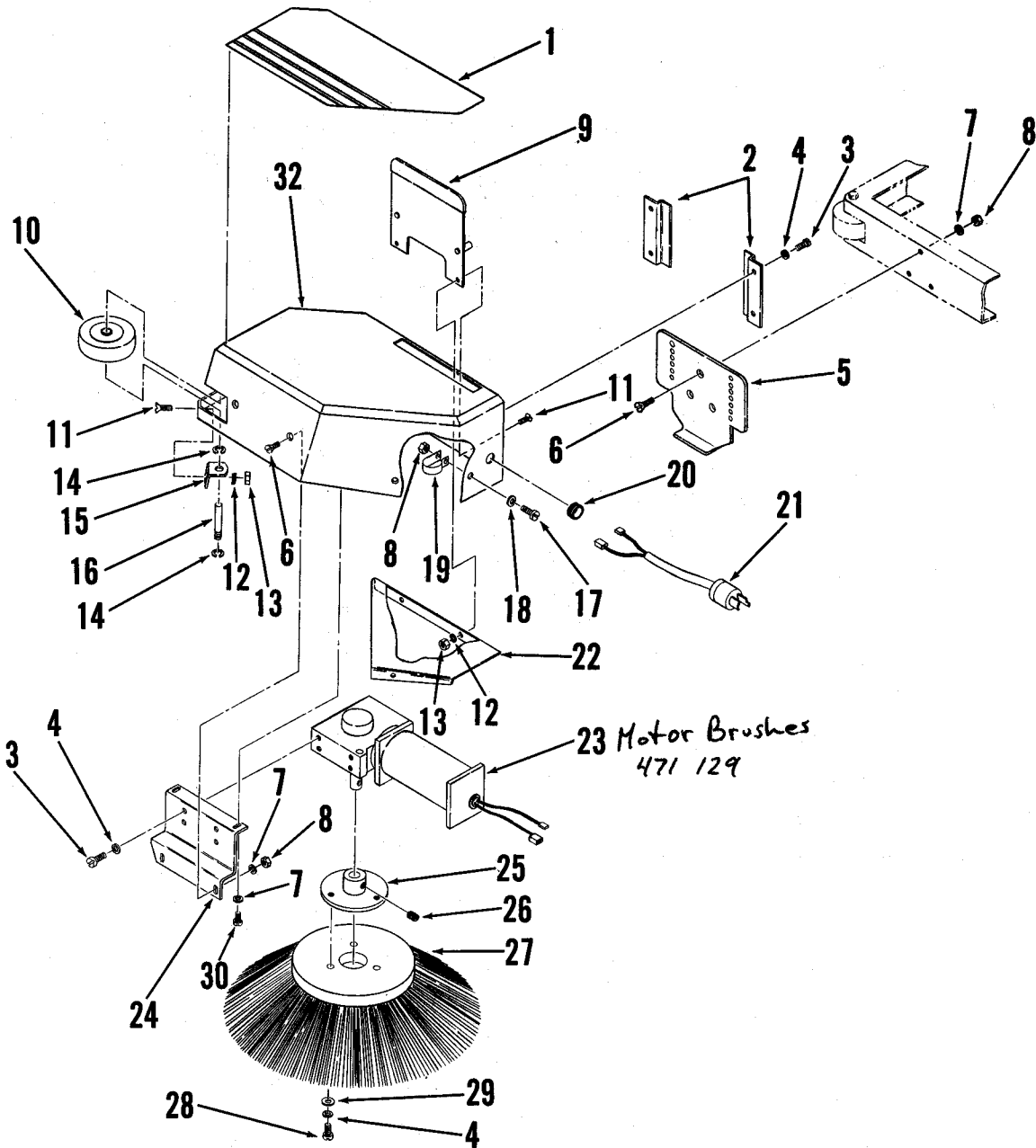
WHEEL DRIVE ASSEMBLY

Item	Part No.	Qty	Description	Item	Part No.	Qty	Description
1		15	Screw, Hex Hd. 1/4-20 x 1/2	24	467418	1	Angle
2		15	Washer, Lock 1/4	25		15	Nut, Hex 1/4-20
3		4	Washer, Flat 1/4	26	467544	1	Chain
4	467470	1	Resistor	27	370010	2	Key, Square
5		7	Screw, 1/4-20 x 7/8	28		4	Screw, Soc. Set 5/16-18 x 1/2
6	364527	2	Knob	29	467382	2	Wheel Assembly
7	467360	1	Handle Weldment	30	467218	2	Bracket, Mounting
8	204196	1	Pin, Spring	31	101753	4	Fitting, Lube
9	329098	2	Bushing, Nylon	32	367095	2	Collar, Shaft
10	467238	2	Bracket, Cam	33		2	Screw, Soc. Set 5/16-13 x 1/4
11		2	Screw, Soc. Set # 10-24 x 1/4	34	367184	1	Bearing, Thrust
12	467250	1	Cam	35	467230	1	Differential
13	331076	1	Collar	36	467368	1	Sprocket 35A36
14	467050	1	Motor, Drive Note #1	37	469026	1	Brake Drum
*	467052	1	Brush Cap Assy (for 467050)	38		4	Bolt 5/16-18 x 4-1/4
15		4	Nut, Hex 5/16-18	39	402745	1	Brake Strap Assembly
16		8	Washer, Lock 5/16	40	402990	2	Arm, Brake
17	467102	1	Plate, Mounting	41	321427	0	Ring, Retaining
18		4	Washer, Flat 5/16	42	328022	2	Spacer, Bushing
19		4	Screw, Hex Hd. 5/16-18 x 2-1/2	43	402995	3	Pin
20	467370	1	Sprocket (for Drive Motor #467050)	44	402971	1	Bracket, Brake Handle
*	467371	1	Sprocket (for Drive Motor #467149)	45	481630	1	Stud
21	441279	1	Key, Square	46	206814	1	Turnbuckle
22	467414	1	Chain, Roller #35 x 60	47	467163	1	Rod, Brake Handle
23	467506	1	Bracket, Stop	48	467155	1	Handle, Brake
				49	468834	1	Ring, Retaining
				50		1	Pin, Cotter 1/16 x 3/4

Note #1: Drive Motor PN 467050 is obsolete, order Motor Replacement Kit PN 467113.

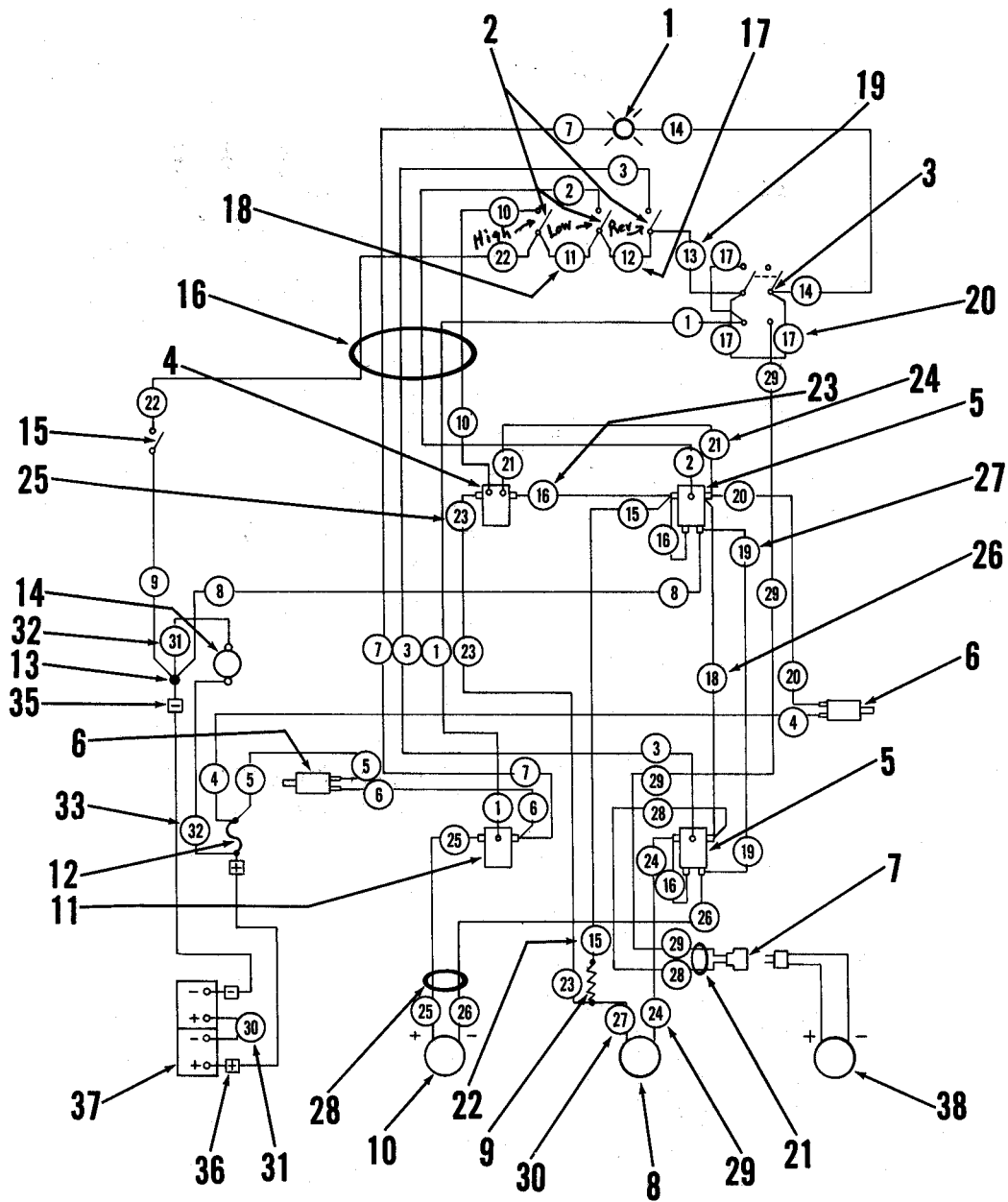


ITEM	PART NO	QTY	DESCRIPTION
1	385 448		GASKET RS 3/8 x 3/8 x 84.5 in.
2		22	SCREW, PAN HD. # 8-32 x 1/2
3		48	WASHER, LOCK # 8
4	467 334	2	PLATE, SKIRT
5	467 336	2	SKIRT
6	467 340	1	SKIRT
7		19	SCREW, PAN HD. # 8-32 x 3/8
8	467 324	1	PLATE, NUT
9	467 326	2	PLATE, SKIRT
10	467 330	2	SKIRT, SIDE
11	467 212	1	BRACKET
12	467 332	1	GASKET, LEFT
13	467 329	2	PLATE
14	467 333	1	GASKET, RIGHT
15		8	NUT, HEX # 8-32
16	467 536	1	PLATE
17	467 496	1	SKIRT
18	467 344	1	GASKET, TOP
19	467 342	1	PLATE
20		7	SCREW, PAN HD. # 8-32 x 5/8 w/HEX NUT



ITEM	PART NO	QTY	DESCRIPTION	ITEM	PART NO	QTY	DESCRIPTION
	467 346	1	SIDE BROOM ASSEMBLY c/o	23	469 530	1	MOTOR ASSEMBLY 24V
1	023 324	1	DECAL	24	467 526	1	MOUNT, SIDE BROOM
2	467 514	2	GUIDE	25	467 522	1	BRUSH HOLDER
3		8	SCREW, PAN HD. # 1/4-20 x 3/8	26		1	SCREW, SET 1/4-20 x 1/4
4		11	WASHER, LOCK 1/4	27	475 179	1	BROOM, SIDE
5	467 528	1	PLATE	28		3	SCREW, PAN HD. 1/4-20 x 5/8
6		5	SCREW, FLAT HD. # 10-24 x 3/4	29		3	WASHER, FLAT 1/4
7		7	WASHER, LOCK # 10	30		2	SCREW, PAN HD. # 10-24 x 3/8
8		6	NUT, HEX # 10-24	31	467 540	1	SPACER (NOT SHOWN - FOR PACKING)
9	467 530	1	LATCH, SIDE BROOM	32	467 534	1	HOUSING, SIDE BROOM
10	322 156	1	WHEEL 2.50 x .812				
11		3	SCREW, FLAT HD. # 8-32 x 1/2				
12		3	WASHER, LOCK # 8				
13		3	NUT, HEX # 8-32				
14	321 125	2	RING, RETAINING EXT. 1/4				
15	467 512	1	BRACKET				
16	467 510	1	PIN				
17		1	SCREW, PAN HD. # 10-24 x 5/8				
18		1	WASHER, INT. TOOTH				
19	478 246	1	TIE, CORD				
20	321 540	1	GROMMET				
21	467 532	1	CORD ASSEMBLY 1 1/2 x 7.50				
22	467 552	1	PLATE, SHIELD				

SIDE BROOM ASSEMBLY



ITEM	PART NO	QTY	DESCRIPTION	ITEM	PART NO	QTY	DESCRIPTION
1	467 410	1	INDICATOR LIGHT	25	467 466	1	WIRE ASSEMBLY # 14 x 28" (23)
2	171 225	3	SWITCH, SPST N.C.	26	467 450	1	WIRE ASSEMBLY # 14 x 4" (18)
3	754 092	1	SWITCH, MAIN & SIDE BROOM	27	467 454	1	WIRE ASSEMBLY # 10 x 5" (19)
4	468 358	1	SOLENOID, SWITCH 24V	28	467 468	1	CORD ASSEMBLY # 14 1/2 x 27" (25-26)
5	470 750	2	SOLENOID, 24V	29	467 464	1	WIRE ASSEMBLY # 14 x 32" (24)
6	454 538	2	CIRCUIT BREAKER 15AMP	30	467 463	1	WIRE ASSEMBLY # 14 x 27 1/2" (27)
7	754 090	1	RECEPTICAL 125V 15 AMP	31	467 458	1	WIRE ASSEMBLY # 10 x 8" (30)
8	467 050	1	MOTOR, DRIVE	32	467 112	1	WIRE ASSEMBLY # 10 x 9" (31)
9	467 470	1	RESISTOR .9 OHMS	33	467 110	1	WIRE ASSEMBLY # 10 x 12" (32)
10	467 494	1	MOTOR, BROOM	34	478 246	1	CABLE TIE - NOT SHOWN
11	371 394	1	SOLENOID, 24V	35	467 460	1	CABLE, BATTERY - NEGATIVE
12	448 739	1	FUSE CLAMP, 40 AMP	36	467 462	1	CABLE, BATTERY - POSITIVE
13	469 058	1	INSULATED STAND OFF	37	206 962	2	BATTERY, 12 VOLT 93 AMP (OPTIONAL)
14	386 119	1	RECEPTICAL, CHARGER	38	467 346	1	SIDE BROOM (OPTIONAL)
15	441 538	1	SWITCH, KEY SPST				
16	467 107	1	WIRE HARNESS				
17	467 115	1	WIRE ASSEMBLY # 14 x 6" (12)				
18	467 118	1	WIRE ASSEMBLY # 14 x 6" (11)				
19	467 120	1	WIRE ASSEMBLY # 14 x 5" (13)				
20	467 448	2	WIRE ASSEMBLY # 14 x 2" (17)				
21	467 139	1	CORD ASSEMBLY # 14 x 88" (28-29)				
22	467 465	1	WIRE ASSEMBLY # 14 x 27 1/2" (15)				
23	467 446	3	WIRE ASSEMBLY # 14 x 3" (16)				
24	467 122	1	WIRE ASSEMBLY # 14 x 11" (21)				

