



# Electronic Service Manuals

This electronic document is provided as a service to our customers. We do not create the contents of the information contained in this document. Should you have detailed questions pertaining to the information contained in this document, you may contact Michco, or the manufacturer which provided the original information in this electronic deliverable. Michco's only part in this electronic deliverable was the electronic assembly process.

You may contact Michco through the following methods:  
Phone (517) 484-9312 or (800) 331-3339 MI, OH, IN only  
2011 N. High St. -- Lansing, Michigan -- 48906  
Fax: (517) 484-9836  
Email: [CustServ@Michco.com](mailto:CustServ@Michco.com)  
Web site: [www.Michco.Com](http://www.Michco.Com)  
Parts Web site: [www.FloorMachineParts.Com](http://www.FloorMachineParts.Com)

Order Parts on Line at:  
**[www.FloorMachineParts.Com](http://www.FloorMachineParts.Com)**

Directly to Parts & Service:  
By Email: **[Shop@Michco.com](mailto:Shop@Michco.com)**  
By Fax: (517) 702-2041  
By Voice: Use numbers above.

**Serving the Cleaning Industry Since 1922**

Notice: All copyrighted material remains property of original owners, all trademarks are property of respective owners. Manuals are subject to Manufacturer's reproduction limitations. Originals or reproductions were provided by manufacturers through a request. We make no warranty as to the correctness of information provided in this document and you assume all risk.

# Retriever™ 360G/P

---



## **PARTS LIST**

**Advance MODELS 56468470, 56468480**

**This parts list is for machines after serial number 505073**

**All models covered in this manual are OBSOLETE**



**Nilfisk  
Advance**

*setting standards*

5/92 revised 2/01 FORM NUMBER 56042267

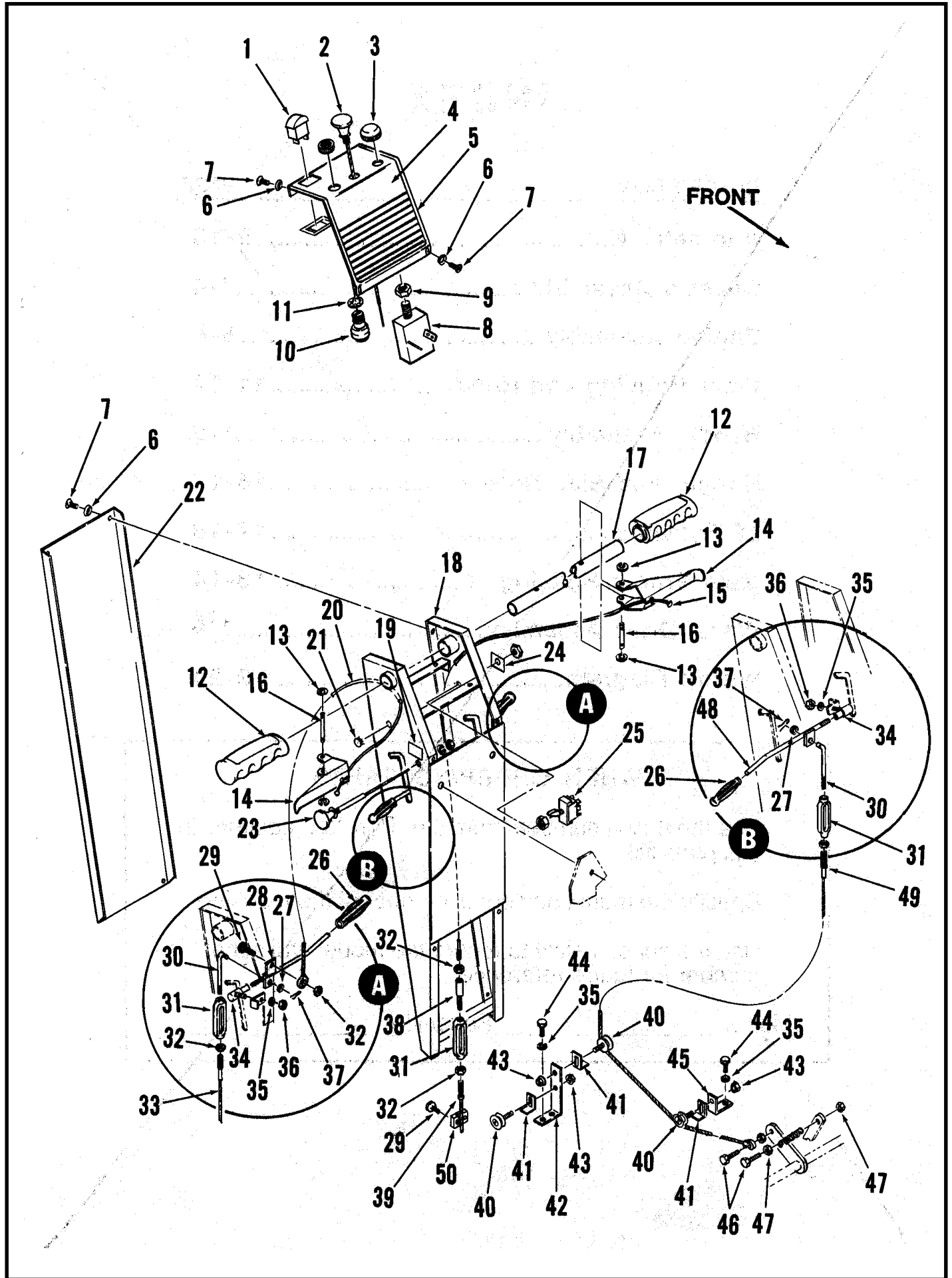
# TABLE OF CONTENTS

<b>DESCRIPTION</b>	<b>PAGE</b>
Handle Assembly .....	1-2
Chassis Assembly .....	3-4
Engine Assembly .....	5-6
Wheel Drive Assembly .....	7-8
Alternator Kit .....	9-10
Filter Housing and Hood .....	11-12
Main Broom Housing .....	13-14
Hopper and Side Broom .....	15-16
LP System .....	17-18
Wiring Diagram .....	19-20

## WHEN ORDERING PARTS

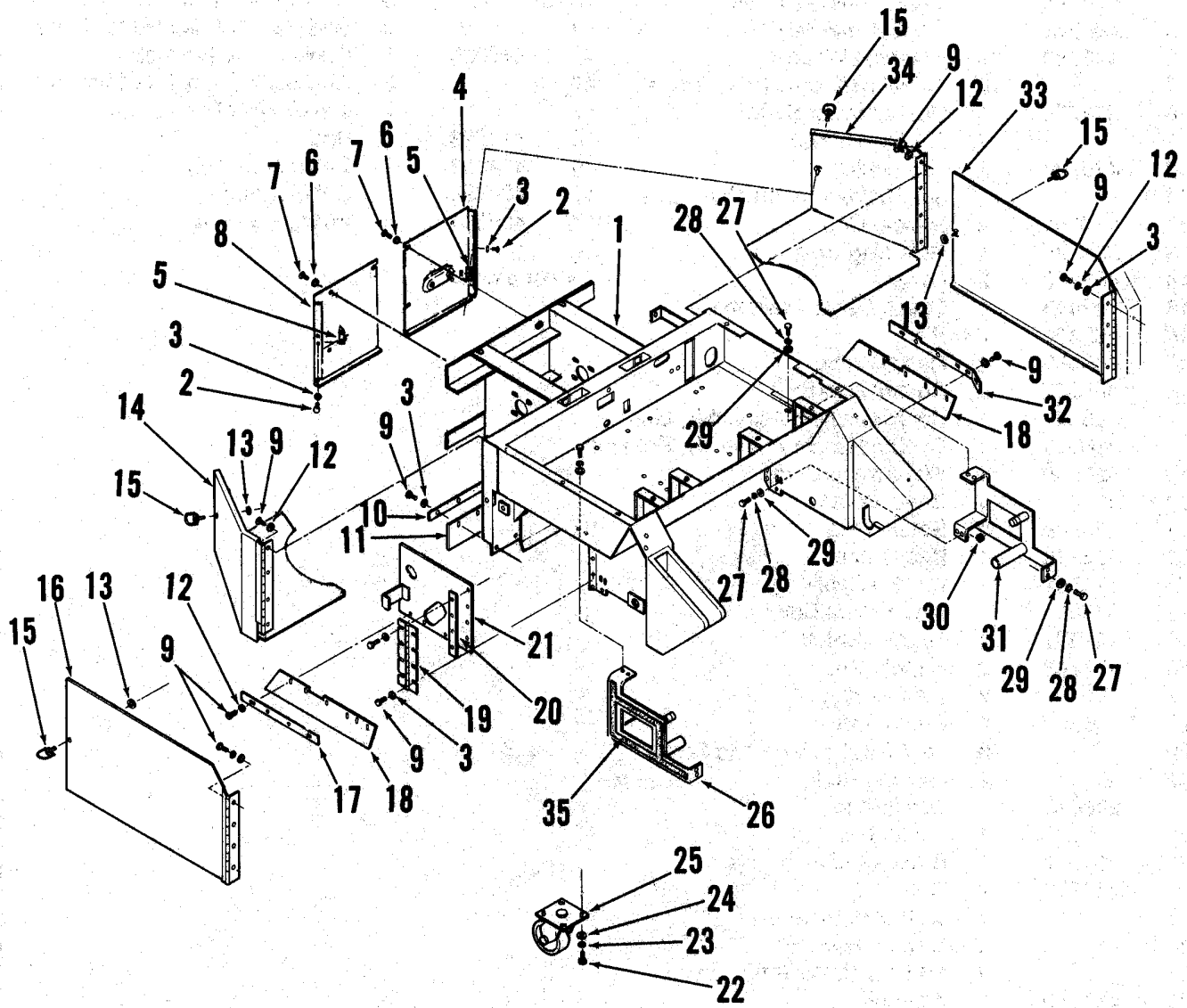
- \* Use the 6 digit numbers from the "Part No." columns in this parts list.
- \* Specify the model and serial number of the machine.
- \* Use the space below to record the model and serial number for future reference.

Model \_\_\_\_\_ Serial No. \_\_\_\_\_



# HANDLE ASSEMBLY

Item	Part No.	Qty	Description	Item	Part No.	Qty	Description
1	400330	1	Amp Meter	40	159749	3	Idler Pulley
2	468277	1	Choke Cable Gas	41	390778	3	Cable Guide
3		1	5/8-32 Flanged Nut	42	468087	1	Cable Guide Bracket
4	025145	1	Control Handle Decal	43		4	7/16-14 Hex Nut
5	468383	1	Control Handle Panel	44		2	5/16-18 x 1/2 Hex Head Screw
6	449340	10	Finishing Washer	45	468085	1	Cable Guide Bracket
7		10	10-24 x 1/2 Oval Head Screw	46		2	1/4-20 x 7/8 Hex Head Screw
8	468175	1	Shaker Motor Switch	47		3	1/4-20 Whiz Nut
9		1	5/8-32 Hex Nut	48	471523	1	Rod
10	470793	1	Key Switch	49	472191	1	Cable Assembly
11		1	3/4 Shakeproof Washer	50	477884	1	Cable Clamp
12	514085	2	Handle Grip	*	468301	1	Wiring Harness
13	321125	4	Retaining Ring				
14	469302	2	Lever				* = not shown
15	469048	1	Clutch Cable Assembly				
16	469298	2	Pin				
17	468352	1	Handle Tube				
18	468377	1	Control Handle				
	468391	1	Control Handle Assembly, Gas				
	468390	1	Control Handle Assembly, Propane				
19	025090	1	Wet Sweep Decal				
20	469044	1	Brake Cable				
21	153648	1	Button Plug				
22	468378	1	Back Panel				
23	479701	1	Control Cable				
24	025084	1	Side Broom Decal				
25	207071	1	Toggle Switch				
26	471193	2	Handle Grip				
27		2	1/4 Flat Washer				
28	469280	1	Brake Rod				
29		3	1/4-20 x 3/4 Pan Head Screw				
30	350079	2	Linkage Rod				
31	206814	3	Turnbuckle				
32		4	1/4-20 Hex Nut				
33	469042	1	Brake Cable				
34	477756	2	Rod End				
35		2	5/16 Lock Washer				
36		4	5/16-24 Hex Nut				
37		2	1/16 x 1 Cotter Pin				
38	469040	1	Adapter				
39	469046	1	Cable Assembly				

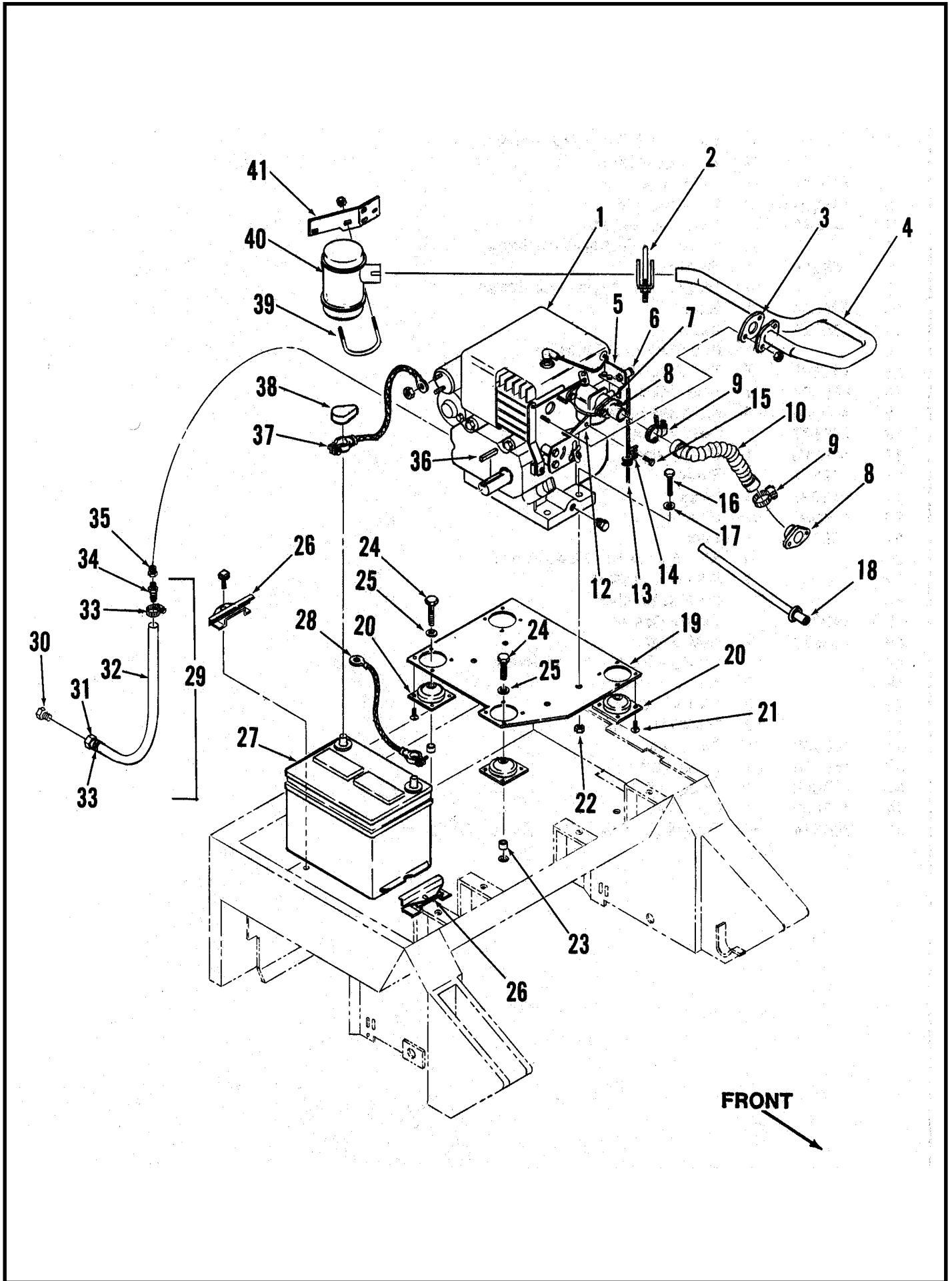


FRONT



# CHASSIS ASSEMBLY

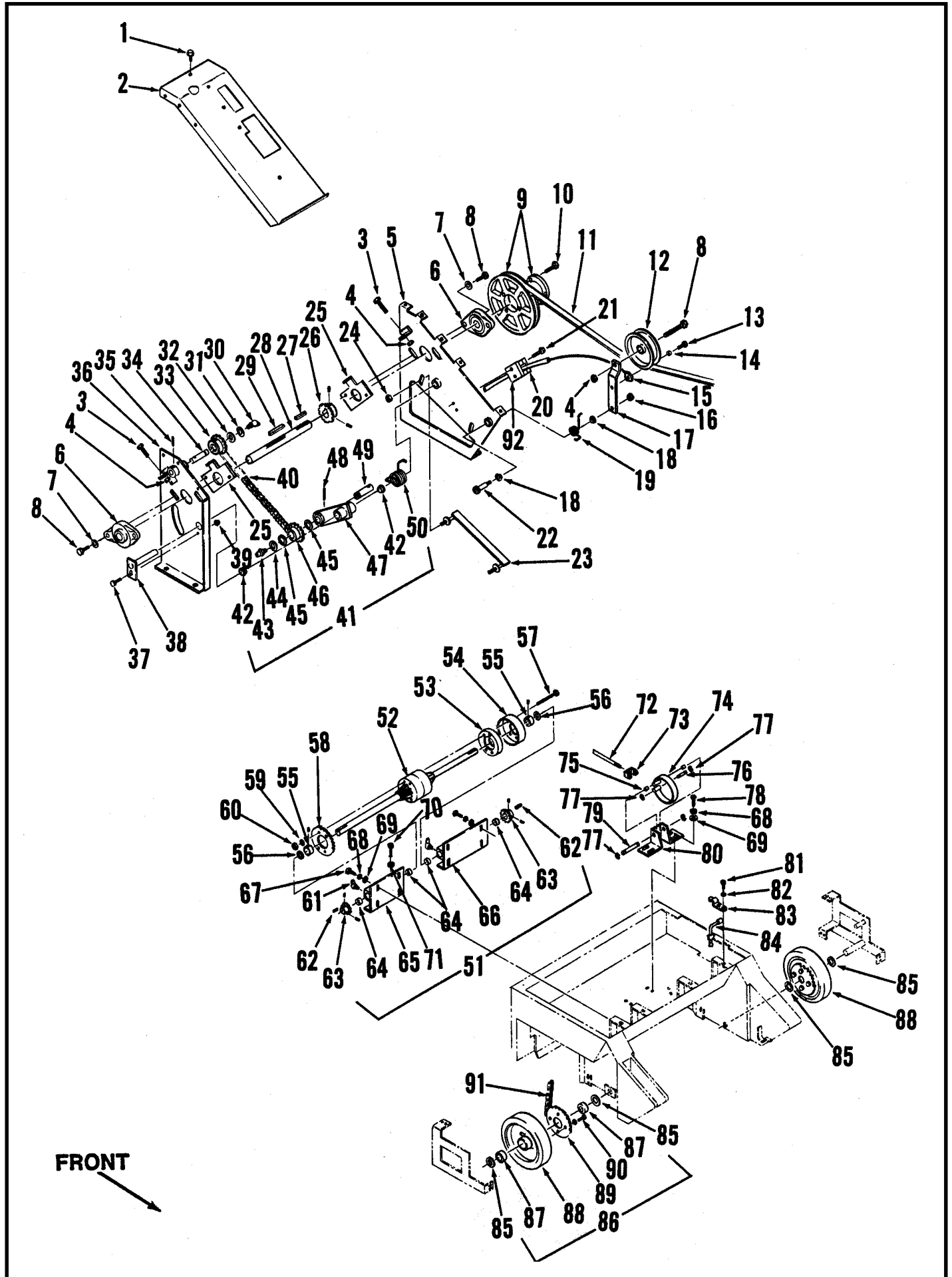
Item	Part No.	Qty	Description
1	468051	1	Chassis
2		4	10-24 x 3/8 Pan Head Screw
3		45	#10 Flat Washer
4	469614	1	Left Panel
5	448109	2	Mounting Plate
6	449340	15	Finishing Washer
7		12	10-24 x 5/16 Oval Head Screw
8	469616	1	Right Panel
9		40	10-24 x 1/2 Phillips Head Screw
10	470604	1	Strap
11	470598	1	Blade
12		40	#10 Shakeproof Washer
13	448108	5	Retaining Washer
14	469604	1	Door, Right
15	448104	5	Fastener Screw
16	469606	1	Door, Right
17	469316	1	Strap, Right
18	469314	2	Blade
19	469098	1	Hinge
20	469096	1	Spacer
21	469092	1	Door
22		4	3/8-16 x 3/4 Hex Head Screw
23		4	3/8 Lock Washer
24		4	3/8 Flat Washer
25	440450	1	Swivel Caster
26	468836	1	Axle, Right
27		12	1/4-20 x 5/8 Hex Head Screw
28		12	1/4 Lock Washer
29		12	1/4 Flat Washer
30		12	1/4-20 Hex Nut
31	468820	1	Axle, Left
32	469318	1	Strap, Left
33	469608	1	Door, Left
34	469602	1	Door, Left
35	300314	9'	Gasket (2.75 m)



# ENGINE ASSEMBLY

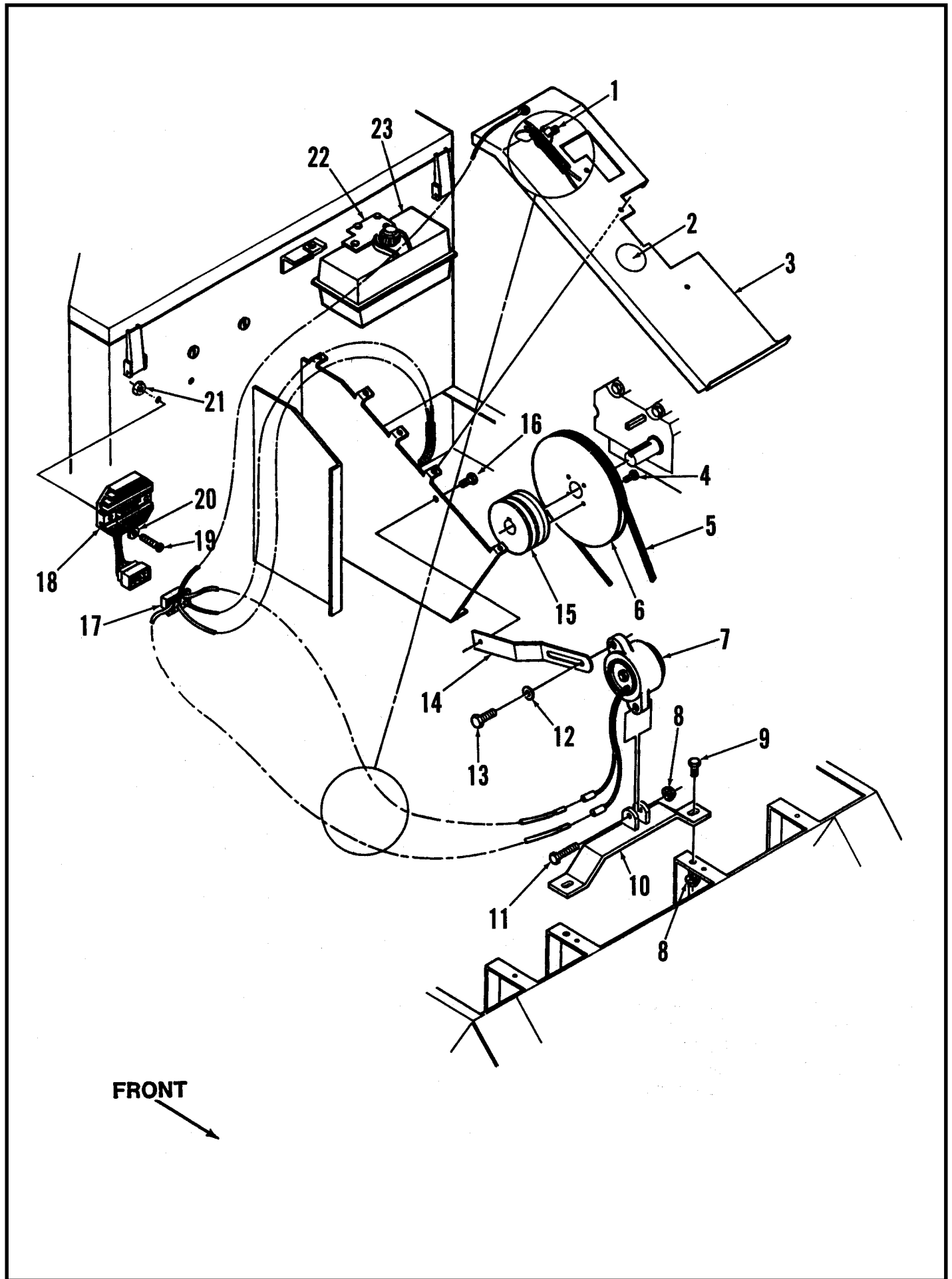
Item	Part No.	Qty	Description
1	465159	1	Engine <b>TSB 573 - G7</b>
	468365	1	Engine Assembly, Gas
	468362	1	Engine Assembly, Propane
2	760172	1	Muffler Clamp
3	467683	1	Exhaust Gasket
4	468287	1	Exhaust Pipe
5	468257	1	Choke Wire Anchor
6	442445	1	Wire Swivel Assembly
7	406358	2	Intake Gasket
8	468375	2	Intake Tube
9	244969	2	Hose Clamp
10	358202	1	Hose
12	468259	1	Choke Cable Anchor, Gas
*	457286	1	Metric Screw (for #12), Gas
13	468277	1	Choke Cable, Gas
14	344265	1	Cable Clamp
15		1	10-24 x 1/2 HP-5 Pan Head Screw
16		4	5/16-18 x 3/4 Hex Head Screw
17		4	5/16 Lock Washer
18	468289	1	Hose
19	468261	1	Engine Mount
20	760362	4	Resilient Mount
21		16	10-24 x 3/4 HP-5 Pan Head Screw
22		4	3/6-16 Hex Nut
23	468265	4	Spacer
24		4	3/8-16 x 2 Hex Head Screw
25		4	3/8 Lock Washer
26	469193	2	Battery Clamp Set
27	441511	1	Battery
28	359384	1	Negative Battery Cable
29	468291	1	Oil Drain Assembly
30	366277	1	Pipe Plug, 1/4
31	752754	1	Coupler
32	465029	1	Hose Assembly
33	219932	1	Hose Clamp
34	104299	1	Barb
35	465497	1	Finish Plug
36	442135	1	Key
37	441775	1	Positive Battery Cable
38	372671	2	Battery Post Boot
39	468253	1	Bolt
40	468285	1	Muffler
41	468255	1	Muffler Bracket

\* = not shown



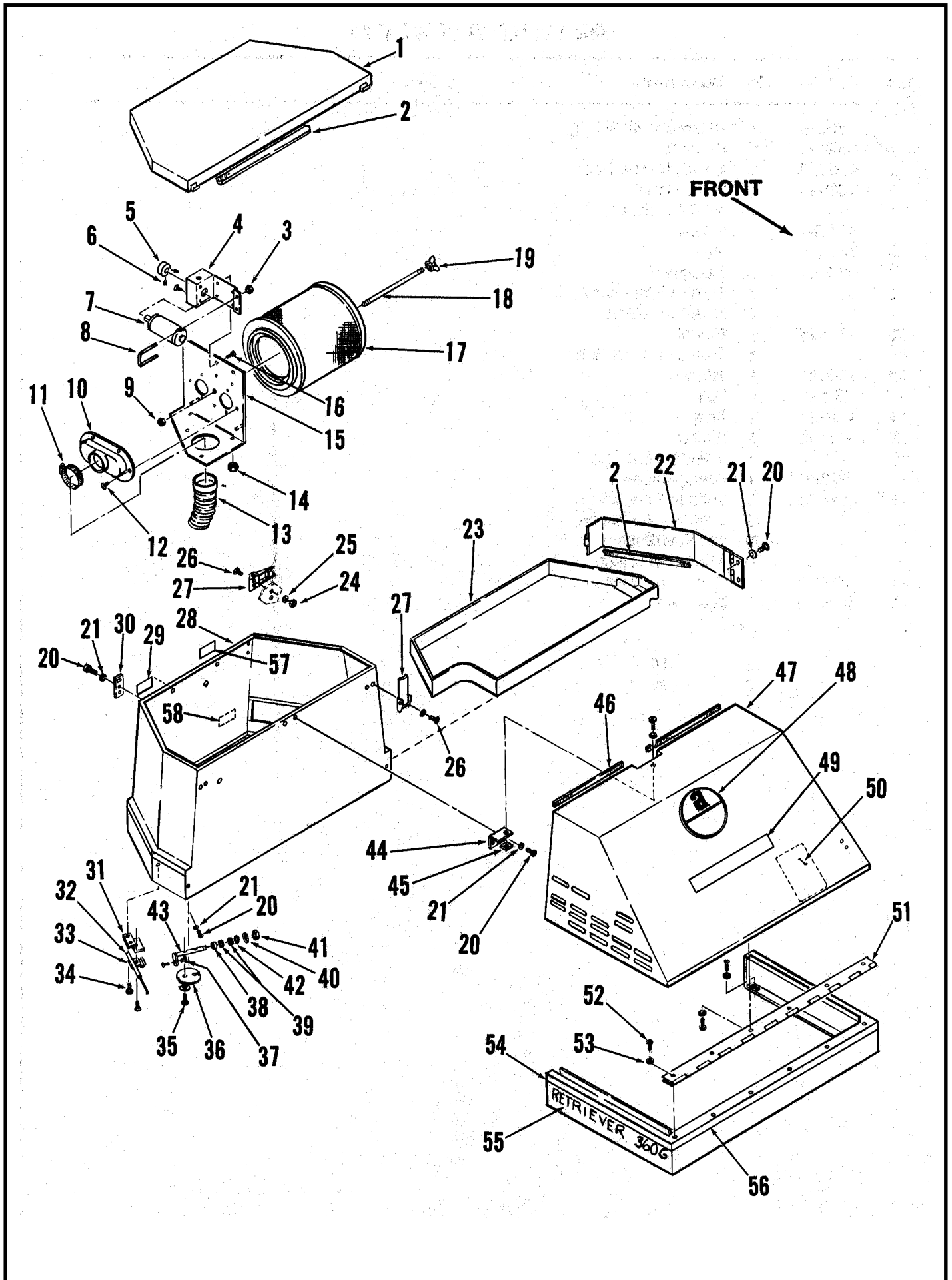
## WHEEL DRIVE ASSEMBLY

Item	Part No.	Qty	Description	Item	Part No.	Qty	Description
1		8	#10-24 x 1/2 Hex Head	49	468117	1	Idler Shaft
2	468153	1	Drive Cover	50	468243	1	Idler Spring
3		2	3/8-16 x 2-1/2 Hex Head	51	468029	1	Differential Assembly (#52-71)
4		3	3/8-16 x 1-1/4 Hex Head	52	469028	1	Differential
5	468131	1	Left Support	53	468031	1	Spacer
6	468129	2	Flanged Bearing	54	469026	1	Brake Drum
7		4	3/8 Lock Washer	55	367095	2	Collar
8		5	3/8-16 x 1-1/4 Hex Head	56	367184	2	Thrust Washer
9	468149	1	Pulley	57	468033	4	Differential Bolt
10		3	1/4-20 x 1 Hex Head	58	467368	1	Sprocket
11	468151	1	V-Belt	59		4	5/16 Lock Washer
12	390682	1	Pulley	60	468027	4	5/16-18 Nut
13		1	#10-24 x 1/2 Hex Head	61	101753	4	Grease Fitting
14	369004	1	Bushing	62	443719	2	Key
15	469046	1	Cable Assembly	63	471157	2	Sprocket
16	469021	1	Lock Nut	64	441406	4	Sleeve Bearing
17	468134	1	Clutch Arm	65	468041	1	Right Support
18	324505	2	Flanged Bearing	66	468047	1	Left Support
19	468241	1	Clutch Spring	67		8	1/4-20 x 3/4 Hex Head
20	477884	1	Cable Clamp	68		12	1/4 Lock Washer
21		2	1/4-20 x 1-1/2 Hex Head	69		12	1/4 Flat Washer
22	468135	1	Shoulder Bolt	70		2	1/4-20 x 1-1/2 Round Head
23	468245	1	Belt Guide	71		2	1/4-20 Hex Nut
24		2	5/16-18 Whiz Nut	72	469042	1	Brake Cable
25	468128	2	Bearing	73	402971	1	Cable Bracket
26	471157	1	Sprocket	74	402745	1	Brake Strap
27	158135	1	Key	75	468163	2	Bushing
28	468141	1	Reverser Shaft	76	104760	1	Pin
29	367958	1	Key	77	321427	4	Retaining Ring
30	468122	1	Lube Fitting	78		4	1/4-20 x 1/2 Hex Head
31	468834	1	Retaining Ring	79	468161	1	Brake Pin
32	468127	2	Thrust Bearing	80	468159	1	Brake Anchor
33	468123	1	Sprocket	81		2	#10-24 x 3/8 Pan Head
34	468117	1	Idler Shaft	82		2	#10 Shakeproof Washer
35		1	Spring Pin	83	477620	1	Tool Clamp
36	468119	1	Right Support	84	471362	1	Tool
37		1	5/16-18 x 1/2 Hex Head	85	367192	4	Washer
38	468136	1	Pivot Pin	86	470577	2	Wheel Assembly
39		1	5/16-18 Whiz Nut	87	362352	2	Ball Bearing
40	468147	1	Chain	88	470581	1	Wheel
41	468106	1	Idler Arm Assembly (#42-49)	89	470576	1	Sprocket
42	185264	2	Flanged Bearing	90		4	5/16-18 x 3/4 Hex Head
43	468139	1	Lube Fitting	91	468830	2	Chain
44	468834	1	Retaining Ring	92	469420	1	Spacer
45	468127	2	Thrust Washer				
46	468123	1	Sprocket				
47	468107	1	Idler Arm				
48		1	Spring Pin				



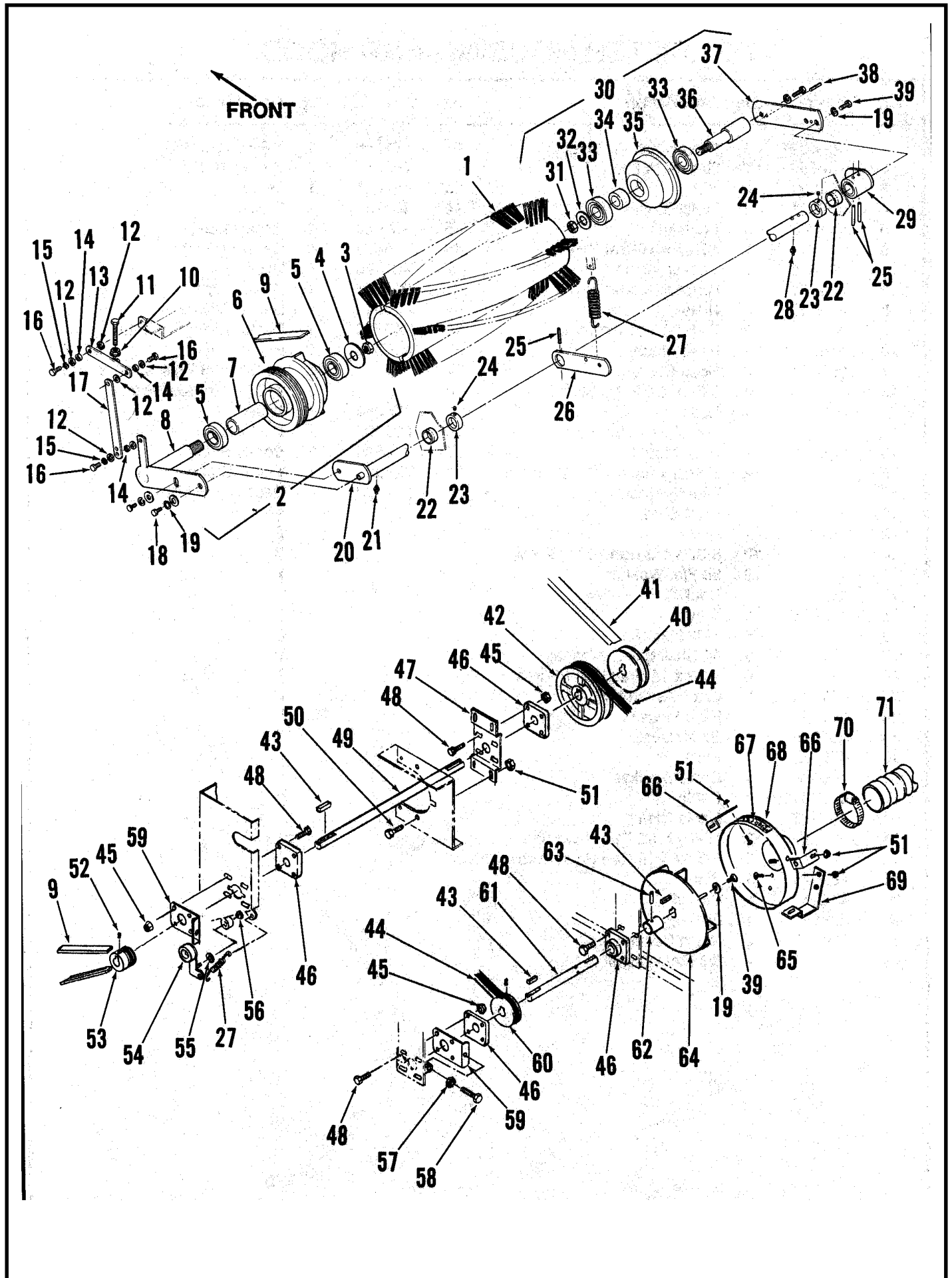
## ALTERNATOR KIT

Item	Part No.	Qty	Description
	468590	1	Alternator Kit (#1-21)
1	152617	1	P-Clamp
2	030080	1	Decal, Hands Clear
3	468593	1	Drive Cover
4		4	1/4-20 x Screw
5	468591	1	V-Belt
6	468601	1	Pulley
7	468581	1	Alternator
8		3	5/16-18 Whiz Nut
9		2	5/16-18 x 7/8 Bolt
10	468596	1	Mount
11		1	5/16-18 x 1-1/2 Bolt
12	152781	1	Washer
13	759082	1	Bolt
14	468597	1	Strap
15	468592	1	Pulley
16		1	5/16-18 x 5/8 Bolt
17	468582	1	Wiring Harness
18	468580	1	Voltage Regulator
19		2	#10-24 x 7/8 Screw
20		2	#10 Flat Washer
21		2	#10-24 Whiz Nut
22	465031	1	Gas Tank Bracket
23	462025	1	Gas Tank



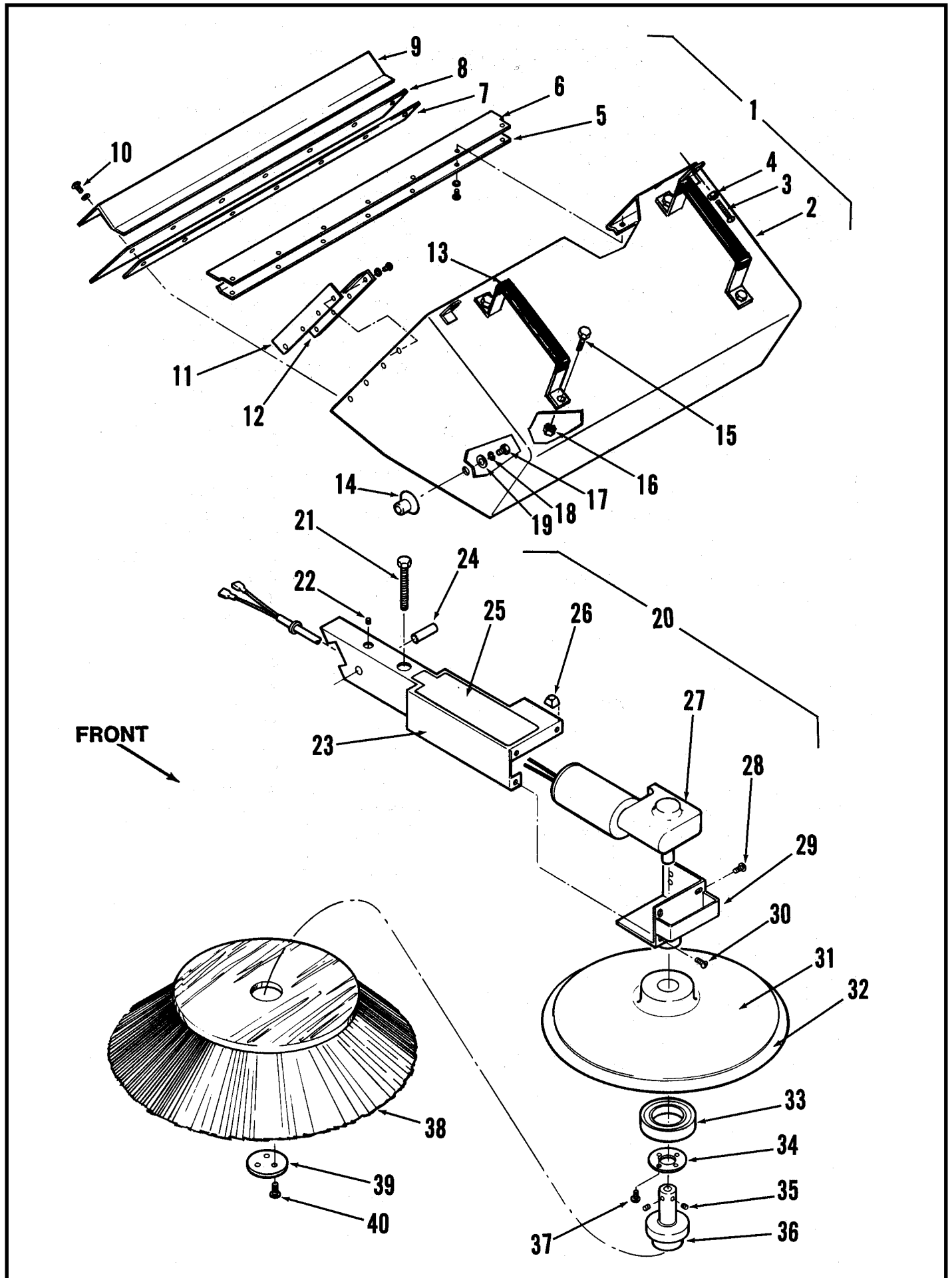
## FILTER HOUSING AND HOOD

Item	Part No.	Qty	Description	Item	Part No.	Qty	Description
1	468354	1	Filter Housing Cover	41	481708	1	3/8-16 Lock Nut
2	200754	15'	Gasket (4.6 m)	42	163767	1	Spring Washer
3	469021	2	Nut	43	469033	1	Lever
4	468331	1	Motor Mount	44	469231	1	Bracket
5	491822	1	Eccentric	45	468960	1	Receptacle
6		2	10-24 x 3/8 Set Screw	46	209434	2'	Gasket (.6 m)
7	491820	1	Shaker Motor	47	468366	1	Hood
*	491823	1	Carbon Brush/Set (for #7)	48	014513	1	Decal, Logo
8	468329	1	U-Bolt	49	016543	1	Decal, Advance
9		2	7/16-20 Hex Jam Nut	50	015238	1	Decal, Wiring Diagram
10	468017	1	Hose Mount	51	468368	1	Hinge
11	352829	2	Hose Clamp	52		16	10-24 x 3/8 Philips Head Screw
12		8	8-32 x 1/2 HP-5 Screw	53		16	#10 Shakeproof Washer
13	469370	1	Hose	54	468384	1	Base
14		3	1/4-20 Hex Nut	55	025237	2	Decal, Retriever 360
15	468011	1	Filter Mount	56	014645	2	Decal, Stripe
16		8	1/4-20 x 3/4 Hex Head Screw	57	024984	1	Decal, Brake
17	468019	1	Filter Element	58	024992	1	Decal, Dust Filter
18	468021	1	Filter Stud				
19	468015	1	Nut				
20		10	8-32 x 1/2 Pan Head Screw				
21		10	#8 Flat Washer				
22	468364	1	Door				
23	469216	1	Tray				
24		6	6-32 Hex Nut				
25		8	#6 Shakeproof Washer				
26		6	6-32 x 1/2 Pan Head Screw				
27	471194	3	Latch Assembly				
28	468357	1	Filter Housing				
29	024976	1	Brush Decal				
30	468762	2	Plate				
31	469366	1	Cable Bracket				
32	479701	1	Cable				
33	468522	1	Cable Clamp				
34		2	10-24 x 1/2 Pan Head Screw				
35		2	6-32 x 5/16 Pan Head Screw				
36	469045	1	Plate				
37	442445	1	Swivel				
38	232181	1	Bushing				
39	329098	2	Nylon Bearing				
40		1	3/8 Flat Washer				



## MAIN BROOM HOUSING

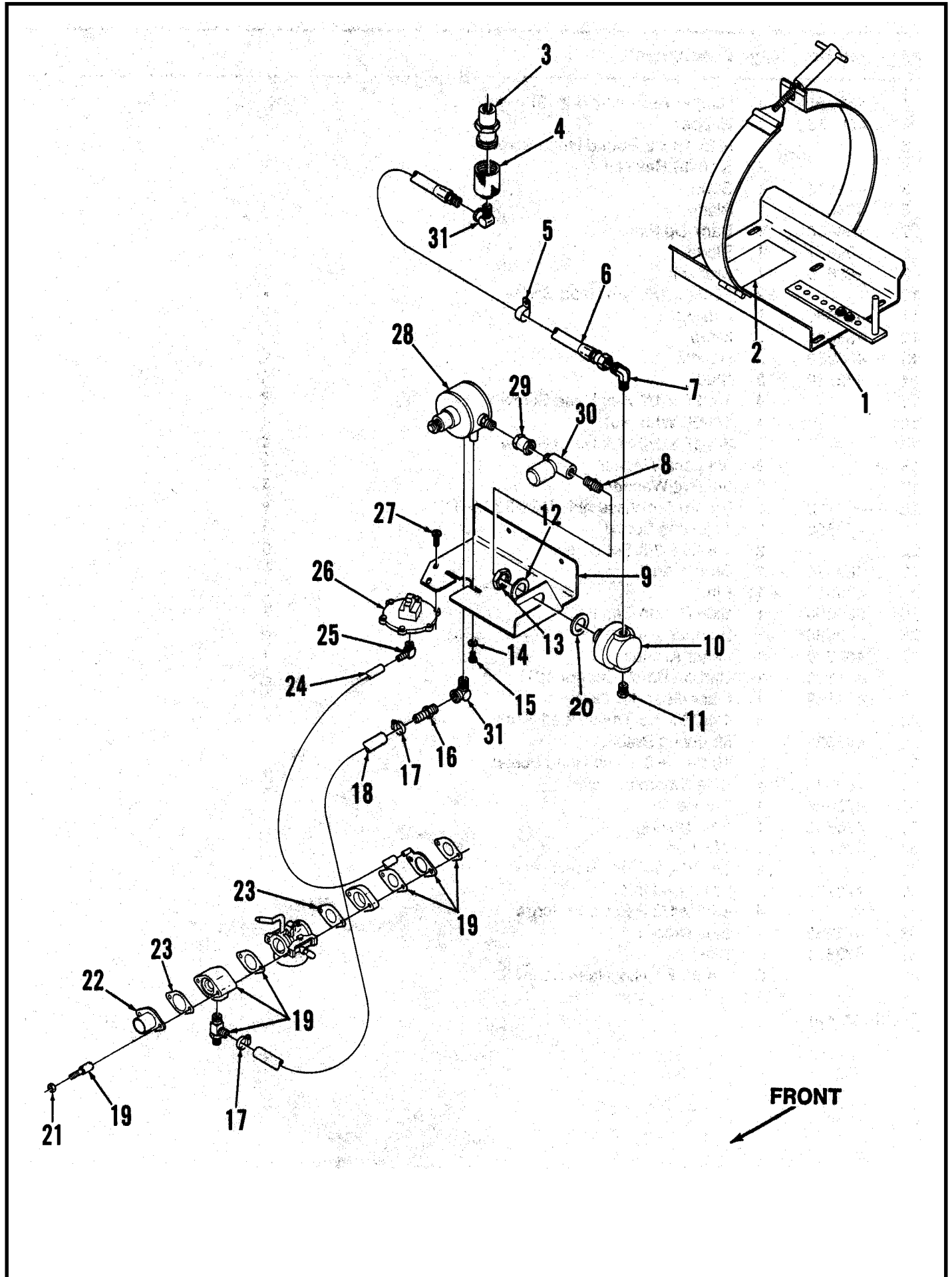
Item	Part No.	Qty	Description	Item	Part No.	Qty	Description
1	475024	1	Main Broom 18 Row Union Mix & Wire, standard	39		3	5/16-18 x 3/4 Hex Head
**	474936	1	6 Row Union Mix & Wire Broom	40	468273	1	Pulley
**	505609	1	9 Row Durene Broom	41	468275	1	Belt
2	468197	1	Drive Lug Assembly (#3-8)	42	468097	1	Pulley
3		1	3/4-10 Hex Nut	43	740168	6	Square Key
4		1	3/4 Flat Washer	44	468385	1	Belt
5	479430	2	Ball Bearing	45		16	3/8-16 Whiz Nut
6	470642	1	Drive Lug Pulley	46	469242	4	Flanged Bearing
7	470730	1	Spacer	47	468337	1	Bearing Mount
8	468200	1	Shaft Arm	48		16	3/8-16 x 1-1/4 Hex Head
9	756240	2	Belt	49	468321	1	Broom Shaft
10		8	1/4-20 Whiz Nut	50		4	1/4-20 x 3/4 Hex Head
11		1	1/4-20 x 1-1/2 Hex Head	51		9	1/4-20 Whiz Nut
12		14	1/4 Flat Washer	52		8	5/16-16 x 1/4 Set Screw
13	472157	1	Bar	53	756061	1	Pulley
14	368989	3	Bushing	54	469390	1	Idler
15		3	1/4 Shakeproof Washer	55		1	3/8 Flat Washer
16		3	1/4-20 x 5/8 Hex Head	56	321427	1	Retaining Ring
17	468244	1	Link	57		2	5/16-18 Hex Nut
18		4	5/16-18 x 1 Hex Head	58		2	5/16-18 x 1-1/2 Hex Head
19	152781	6	Lock Washer	59	469336	2	Clamp
20	469060	1	Arm	60	465442	1	Pulley
21	101737	2	Grease Fitting	61	468089	1	Impeller Shaft
22	441406	2	Bearing	62	469393	1	Spacer
23	367095	2	Collar	63		1	3/16 x 7/8 Pin
24		8	5/16-18 x 1/4 Set Screw	64	469347	1	Impeller
25		3	3/16 x 1-1/4 Spring Pin	65		4	1/4-20 x 1/2 Truss Head
26	472189	1	Bar	66	468081	2	Shroud Support
27	470672	2	Spring	67	030080	1	Decal, Hands Clear
28	101761	2	Grease Fitting	68	469346	1	Impeller Shroud
29	469057	1	Arm	69	468083	1	Shroud Support
30	469050	1	Idler Lug Assembly (#31-38)	70	352829	2	Hose Clamp
31		1	3/4-10 Hex Nut	71	469370	1	Hose
32		1	3/4 Flat Washer				** = optional accessory, not included
33	479430	2	Ball Bearing				
34	470728	1	Bushing				
35	470636	1	Idler Lug				
36	469056	1	Shaft				
37	469052	1	Plate				
38	469054	1	Spring Pin				



## HOPPER AND SIDE BROOM

Item	Part No.	Qty	Description
1	468181	1	Hopper Assembly (#2-19)
2	468182	1	Hopper
3		2	5/16-18 x 2 Round Head Screw
4		2	5/16-18 Hex Nut
5	472114	1	Strap
6	468672	1	Blade
7	468688	1	Back-Up Plate
8	468677	1	Blade
9	468679	1	Bracket
10		22	10-24 x 1/2 Pan Head Screw
11	468680	2	Gasket
12	468681	2	Strap
13	468280	2	Handle
14	472110	2	Stud
15		4	1/4-20 x 1/2 Hex Head Screw
16		4	1/4-20 Whiz Nut
17		2	3/8-16 x 1/2 Hex Head Screw
18		2	3/8 Lock Washer
19		2	3/8 Flat Washer
20	469712	1	Broom Arm Assembly (#21-23,26-37)
21	470800	1	Adjusting Screw
22		2	1/4-20 x 3/8 Set Screw
23	469624	1	Broom Arm
24	470812	1	Pin
25	025050	1	Side Broom Decal
26	382566	1	Bumper
27	469388	1	Motor Assembly
*	471129	1	Carbon Brush/Set (for #27)
*	471167	1	Fiber Gear (for #27)
28		4	1/4-20 x 3/8 Truss Head Screw
29	469626	1	Mounting Bracket
30		3	10-24 x 5/8 Truss Head Screw
31	469628	1	Side Broom Guide
32	470648	1	Bumper
33	470656	1	Ball Bearing
34	470773	1	Washer
35		2	1/4-20 x 1/4 Set Screw
36	470796	1	Broom Adapter
37		4	8-32 x 1/2 Pan Head Screw
38	473936	1	Side Broom
39	473871	1	Washer
40		3	1/4-20 x 1 Hex Head Screw

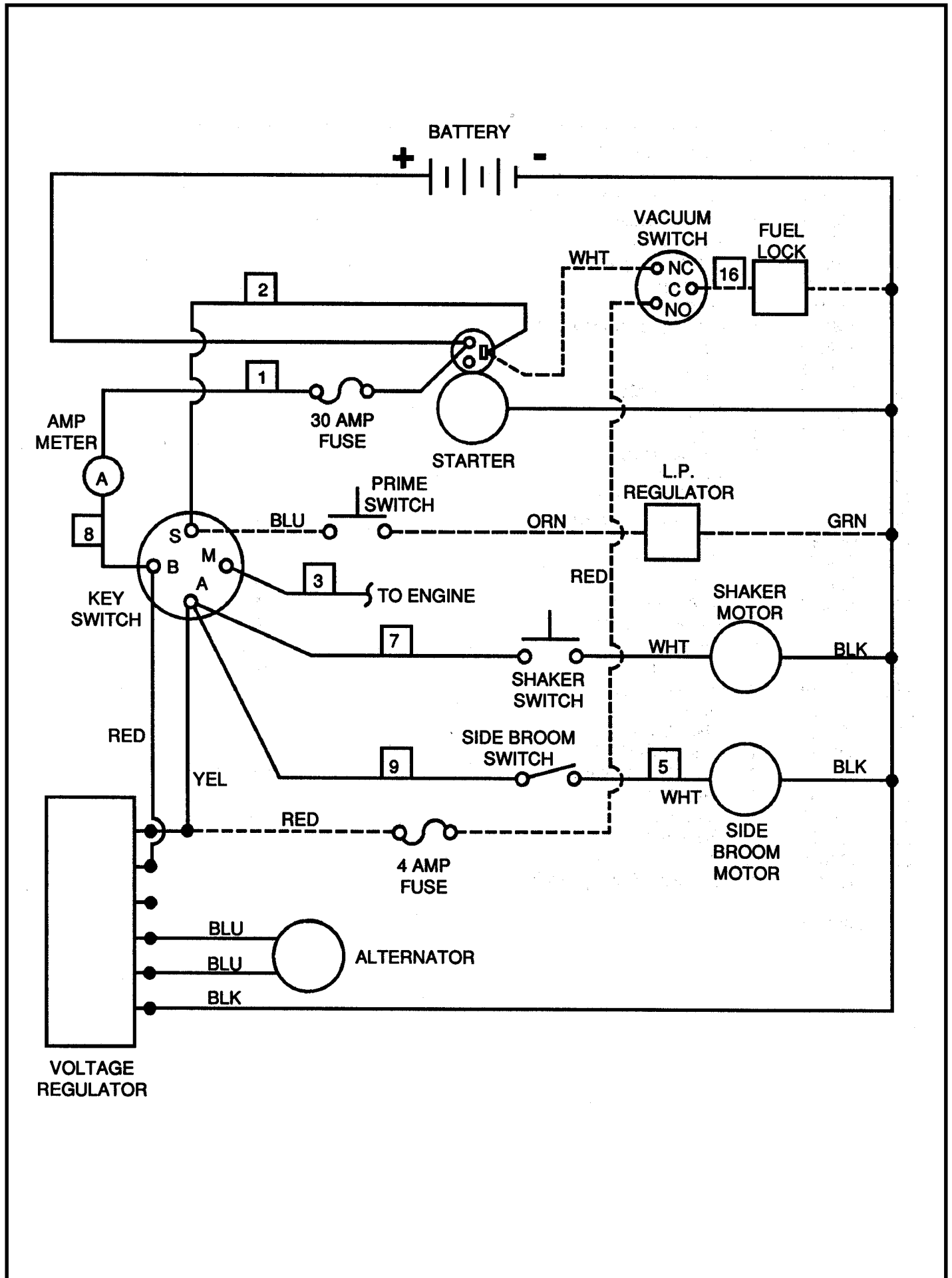
\* = not shown



## LP SYSTEM

Item	Part No.	Qty	Description
1	470118	1	Bracket Assembly
2	025427	1	Decal, Caution
3	369683	1	Male Coupler
4	369675	1	Female Coupler
5	442003	1	P-Clamp
6	468347	1	Hose
	468349	1	Hose Assembly (#4-6, 31)
7	456608	1	Elbow
8	742317	1	Nipple
9	469452	1	Regulator Mount
10	403586	1	Filter
11	740136	1	Plug
12		2	7/8 Flat Washer
13		1	7/8-14 Nut
14		2	#10 Flat Washer
15		2	#10-32 x 1/2 Screw
16	443999	1	Barb
17	756364	2	Hose Clamp
18	465029	1	Hose
19	465520	1	LP Adapter Kit
20		1	7/8 Star Washer
21		2	M6 Nut
22	468375	2	Intake Tube
23	406358	2	Intake Gasket
24	370004	1'	Hose (.3 m)
25	755726	1	Elbow Barb
26	406354	1	Vacuum Switch
27		2	#10-32 x 3/4 Screw
28	468344	1	Regulator
29	220526	1	Coupling
30	403582	1	Fuel Lock
31	369632	2	Elbow
*	359832	1	LP Tank, 20 lb (optional)

\* = not shown



## WIRING DIAGRAM

Part No.	Qty	Description
468581	1	Alternator
400330	1	Amp Meter
441511	1	Battery
403582	1	Fuel Lock Solenoid (LP only)
468346	1	Fuse, 4 Amp (LP only)
468599	1	Fuse Holder w/ Fuse, 30 Amp
900283	1	Fuse only, 30 Amp
470793	1	Key Switch
403602	1	Prime Switch (LP only)
468344	1	Regulator (LP only)
491820	1	Shaker Motor
468175	1	Shaker Switch
469388	1	Side Broom Motor
207071	1	Side Broom Switch
467699	1	Starter
467701	1	Starter Solenoid
406354	1	Vacuum Switch (LP only)
468580	1	Voltage Regulator



Nilfisk-Advance, Inc.  
14600 21st Avenue North  
Plymouth, MN, 55447-3408  
[www.nilfisk-advance.com](http://www.nilfisk-advance.com)  
Phone: 800-989-2235  
Fax: 800-989-6566  
©2000 Nilfisk-Advance, Inc.,  
Plymouth, MN 55447-3408  
Printed in the U.S.A.