



Electronic Service Manuals

This electronic document is provided as a service to our customers. We do not create the contents of the information contained in this document. Should you have detailed questions pertaining to the information contained in this document, you may contact Michco, or the manufacturer which provided the original information in this electronic deliverable. Michco's only part in this electronic deliverable was the electronic assembly process.

You may contact Michco through the following methods:
Phone (517) 484-9312 or (800) 331-3339 MI, OH, IN only
2011 N. High St. -- Lansing, Michigan -- 48906
Fax: (517) 484-9836
Email: CustServ@Michco.com
Web site: www.Michco.Com
Parts Web site: www.FloorMachineParts.Com

Order Parts on Line at:
www.FloorMachineParts.Com

Directly to Parts & Service:
By Email: **Shop@Michco.com**
By Fax: (517) 702-2041
By Voice: Use numbers above.

Serving the Cleaning Industry Since 1922

Notice: All copyrighted material remains property of original owners, all trademarks are property of respective owners. Manuals are subject to Manufacturer's reproduction limitations. Originals or reproductions were provided by manufacturers through a request. We make no warranty as to the correctness of information provided in this document and you assume all risk.

PARTS LIST

MAXICAT II

Model 452726

This parts list is for machines
after serial number 1067417

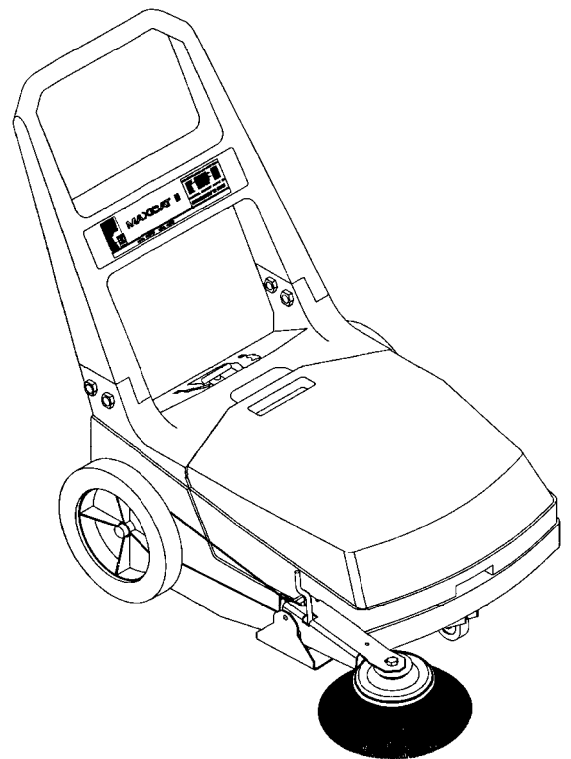


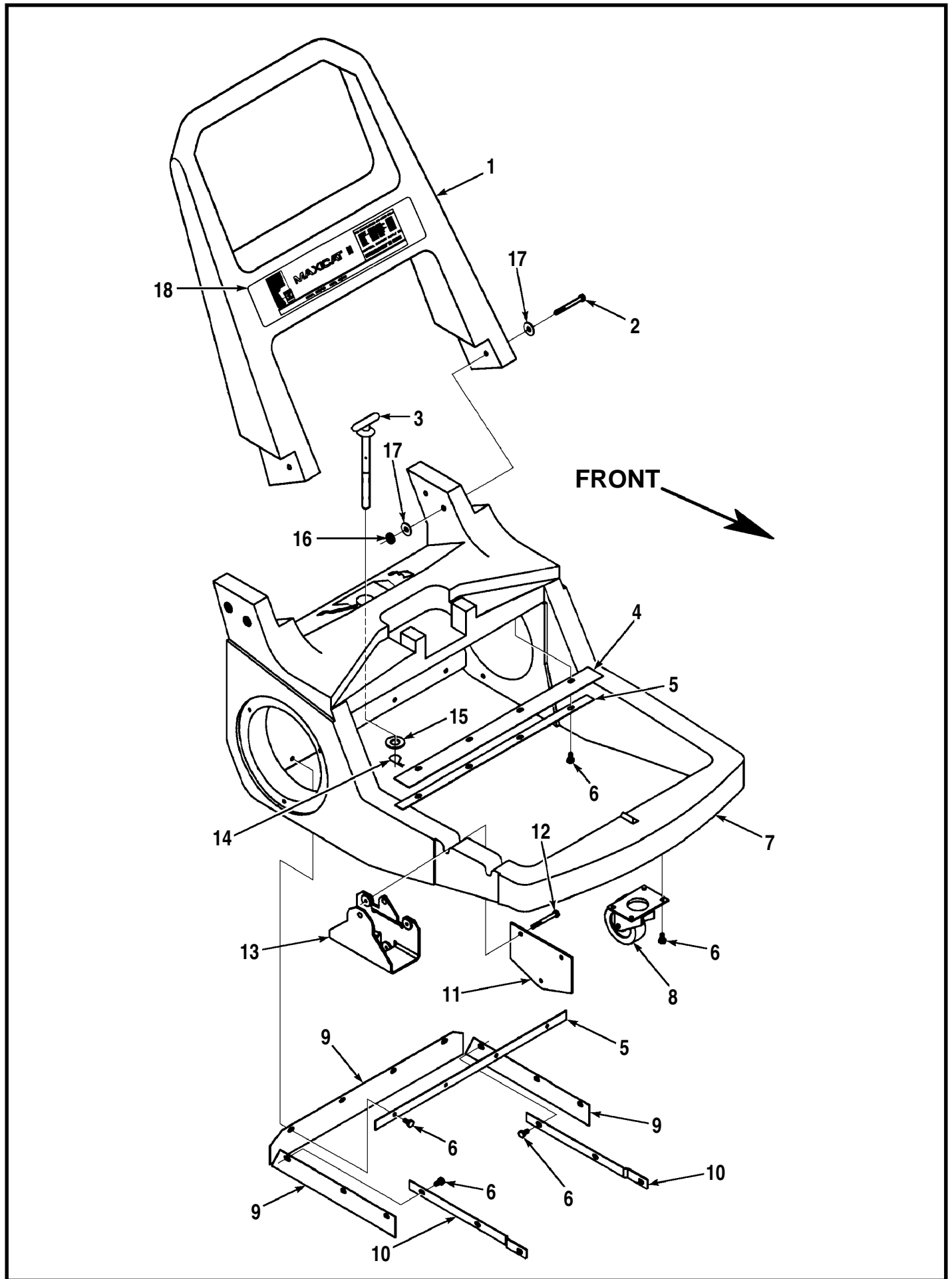
TABLE OF CONTENTS

Chassis System - Chassis & Handle	1-2
Chassis System - Axle & Wheels	3-4
Hopper & Main Broom System	5-6
Side Broom System	7-8

WHEN ORDERING PARTS

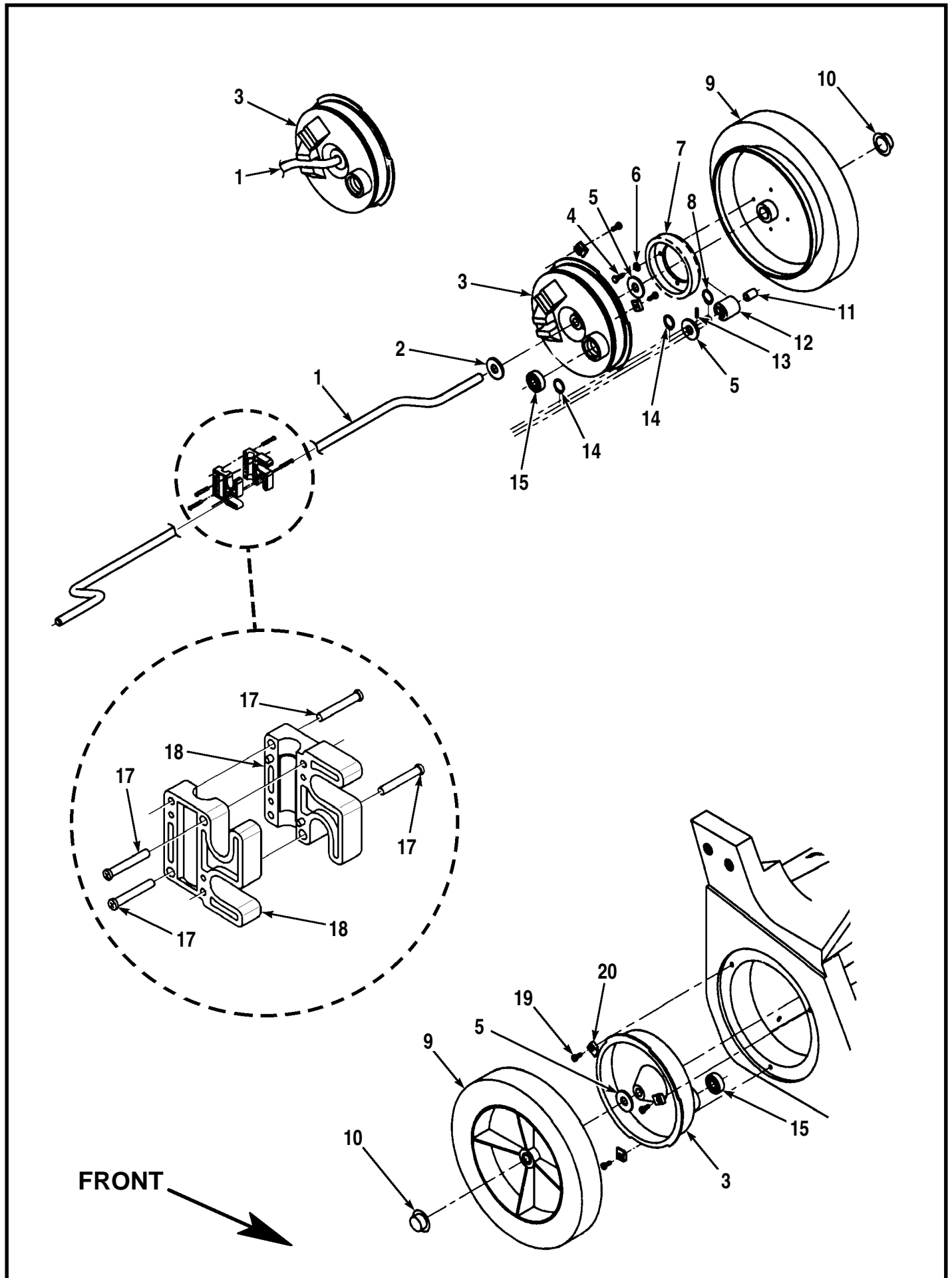
- Use the 6 digit numbers from the "Part No." columns in this parts list.
- Specify the model and serial number of the machine.
- Use the space below to record the model and serial number for future reference.

Model_____ Serial Number_____



CHASSIS SYSTEM - CHASSIS & HANDLE

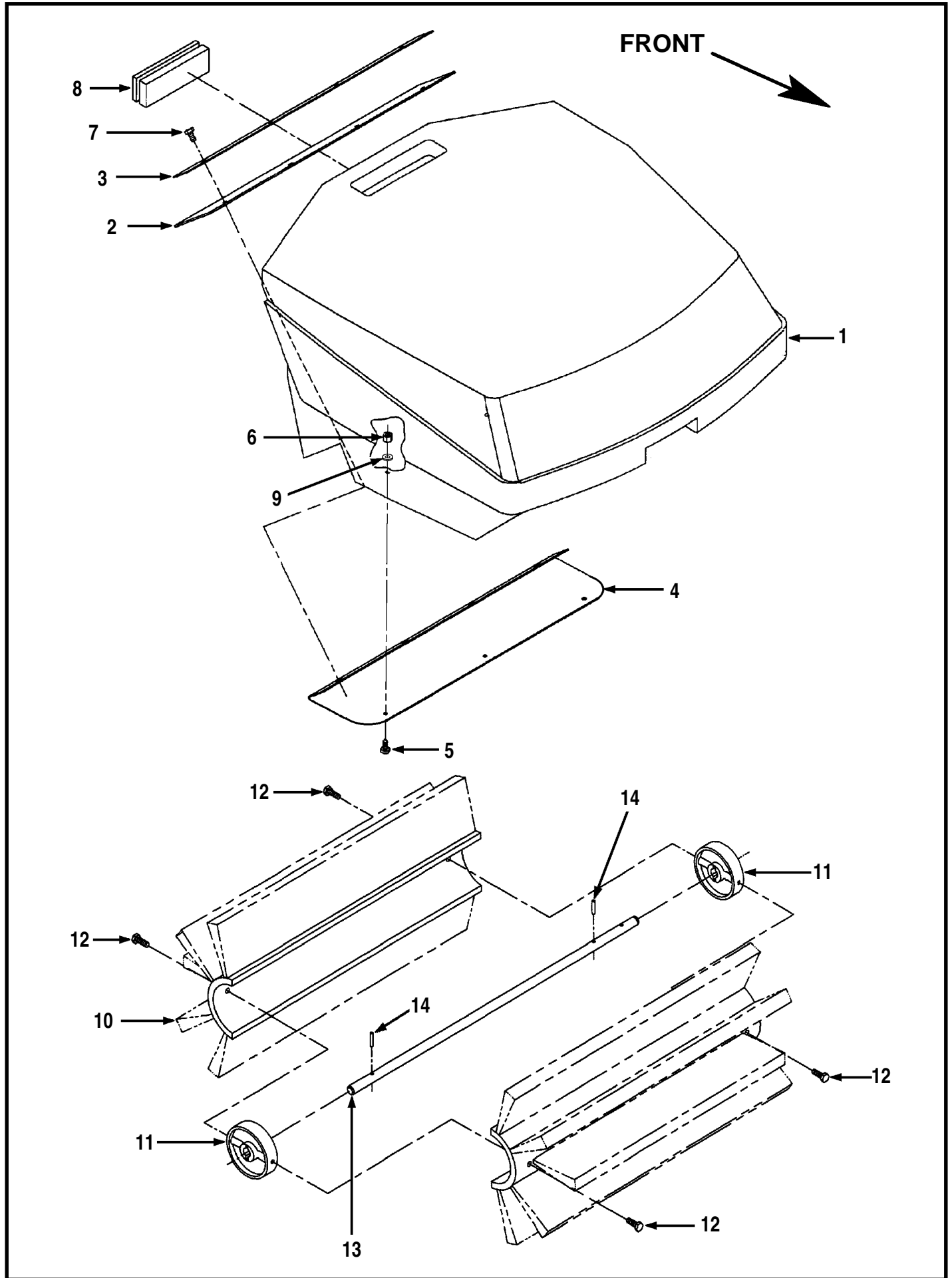
Item	Part No.	Qty	Description
1	452727	1	Handle
2	002606	4	Scr, Hex 5/16-18 x 3-1/4
3	475052	1	Adjusting Screw
4	475091	1	Hopper Top Seal
5	475088	2	Strap
6	003036	16	1/4-20 x 1/2 Loc Screw
7	475078	1	Chassis
8	475099	1	Swivel Caster
9	475114	1	Skirt Kit includes:
	475120	2	Side Skirt
	475118	1	Rear Skirt
10	475036	2	Strap
11	475080	1	Mounting Plate
12	003117	3	1/4-20 x 2 Loc Screw
13	475081	1	Broom Arm Yoke
14	003120	1	Cotter Hair Pin 1/4 x 1/2
15	002168	1	1/2 Flat Washer
16	002826	4	Nut, Hex Nyl Loc-Thin 5/16-18
17	002220	8	Wsh, Flt Std 5/16
18	015769	1	Decal, MAXICAT II



CHASSIS SYSTEM - AXLE & WHEELS

Item	Part No.	Qty	Description
1	475054	1	Axle TSB 686
2	002168	1	1/2 Flat Washer
3	475072	2	Support Hub
4	009153	4	#10-24 x 1/2 Loc Screw
5	166839	5	Thrust Bearing
6	001954	4	#10 Flat Washer
7	475066	1	Gear
8	157066	1	Retainer Ring
9	475227	2	Wheel Assy
*	475432	2	Tire
*	475226	2	Wheel Hub Rim
*	475101	4	Bearing
10	009097	2	Cap Nut TSB 686
11	475110	1	Bearing TSB 686
12	475064	1	Pinion TSB 686
13	003116	1	1/8 x 5/8 Pin
14	003255	2	Retainer Ring
15	475108	2	Bearing
16			Intentionally omitted
17	003112	4	#10-14 x 1 Plastite Screw
18	475111	2	Yoke
19	009139	6	#10-24 x 3/8 Loc Screw
20	475104	6	Tab

* = Not Shown

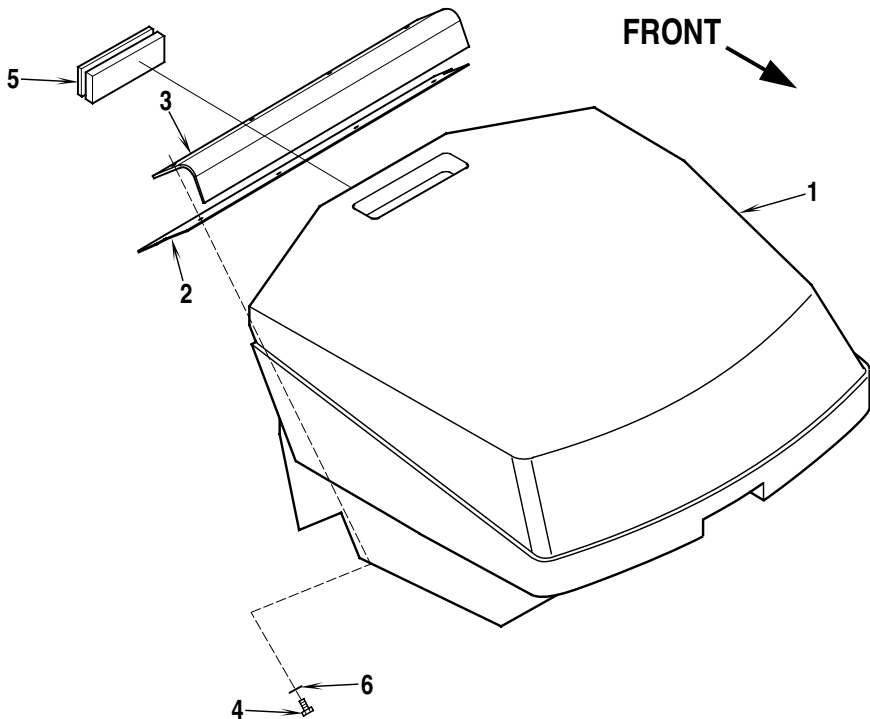


HOPPER & MAIN BROOM SYSTEM

Item	Part No.	Qty	Description
1	475076	1	Hopper
2	475082	1	Hopper Lip
3	475089	1	Hopper Strap Note
4	475090	1	Hopper Lip Plate Note
5	002504	3	Screw, Hex 10-24 x .75
6	002768	3	Nut, Nyl Loc 10-24
7	009038	4	Screw, HP-5 10-24 x 7/8
8	475106	1	Breather
9	001954	3	#10 Flat Washer
10	505611	1	Main Broom
11	475068	2	Broom Mounting Disc
12	009149	4	1/4-14 x 1 Screw
13	475056	1	Broom Shaft TSB 686
14	003114	2	5/32 x 7/8 Pin

Note: The Hopper Lip Plate PN475090 (item #4 at left) and Hopper Strap PN475089 (item #3 at left) have been eliminated. They are being replaced by a one piece Hopper Lip Plate PN475090 (item #3 below). All machines built after June 1995 will have this change. When installing the new Hopper Lip Plate PN475090 on a machine built before June 1995, the (3) holes for mounting the old Hopper Lip Plate PN475090 (item #4 at left) must be plugged. You can use the existing (3) screws and nuts (items #5 and 6 at left) by simply re-installing them in the holes after removing the Hopper Lip Plate (item #4 at left). Items #3 and 4 at left are no longer available, if they need to be replaced, order item #3 below.

NEW STYLE



Item	Part No.	Qty	Description
1	475076	1	Hopper
2	475082	1	Hopper Lip
3	475090	1	Plate, Hopper Lip
4	009039	4	Scr, Hex Hd Thd Form 10-24 x .50
5	475106	1	Breather
6	001954	4	Wsh, Flt SAE #10

SIDE BROOM SYSTEM

Item	Part No.	Qty	Description
1	475179	1	Side Broom
2	475055	1	Bumper Disc
3	475108	2	Bearing
4	475070	1	Pulley
5	475122	1	Belt
6	330741	2	Bushing
7	475408	2	Guide Wheel
8	475102	1	Broom Arm
9	475094	1	Adjusting Screw TSB 686
10	009017	2	1/2 Flat Washer
11	002770	1	1/2-13 Nyl Loc Nut
12	001920	1	1/2-13 x 2-1/4 Bolt
13	002708	2	1/4-20 Nyl Loc Nut
14	002825	2	1/4-20 x 1-1/4 Screw
15	002948	3	1/4-20 x 3/4 Screw
16	003039	1	1/4-20 x 1/2 Screw
17	367206	1	Bushing
18	002098	3	1/4 Flat Washer



NATIONAL SANITARY SUPPLY CO

WESTERN REGION HEADQUARTERS: 13217 SO. FIGUEROA, LOS ANGELES, CA 90061 (310) 527 3000

SOUTHWEST REGION HEADQUARTERS: 4902 GULF FREEWAY, HOUSTON, TEXAS 77023 (713) 921-7800

MIDWEST REGION HEADQUARTERS: 300-M DISTRIB. CIRCLE, FAIRFIELD, OHIO 45014 (513) 870-3570

LOCATIONS IN 18 STATES. FOR THE OFFICE NEAREST YOU

PHONE 1-800-I-BUY-NSS

1-800-428-9677