



Electronic Service Manuals

This electronic document is provided as a service to our customers. We do not create the contents of the information contained in this document. Should you have detailed questions pertaining to the information contained in this document, you may contact Michco, or the manufacturer which provided the original information in this electronic deliverable. Michco's only part in this electronic deliverable was the electronic assembly process.

You may contact Michco through the following methods:
Phone (517) 484-9312 or (800) 331-3339 MI, OH, IN only
2011 N. High St. -- Lansing, Michigan -- 48906
Fax: (517) 484-9836
Email: CustServ@Michco.com
Web site: www.Michco.Com
Parts Web site: www.FloorMachineParts.Com

Order Parts on Line at:
www.FloorMachineParts.Com

Directly to Parts & Service:
By Email: **Shop@Michco.com**
By Fax: (517) 702-2041
By Voice: Use numbers above.

Serving the Cleaning Industry Since 1922

Notice: All copyrighted material remains property of original owners, all trademarks are property of respective owners. Manuals are subject to Manufacturer's reproduction limitations. Originals or reproductions were provided by manufacturers through a request. We make no warranty as to the correctness of information provided in this document and you assume all risk.

RETRIEVER MODEL 6600XP

THIS PARTS LIST IS FOR MACHINES
AFTER SERIAL NUMBER 102 496

PARTS LIST



ADVANCE.
MACHINE COMPANY

INTERNATIONAL HEADQUARTERS, Plymouth, Minnesota 55441-3485
EUROPE, Llantrisant, Pontyclun, Mid-Glamorgan CF7 8YZ, Wales, United Kingdom
CANADA, 1296 Crestlawn Drive, Mississauga, Ontario L4W 1A9

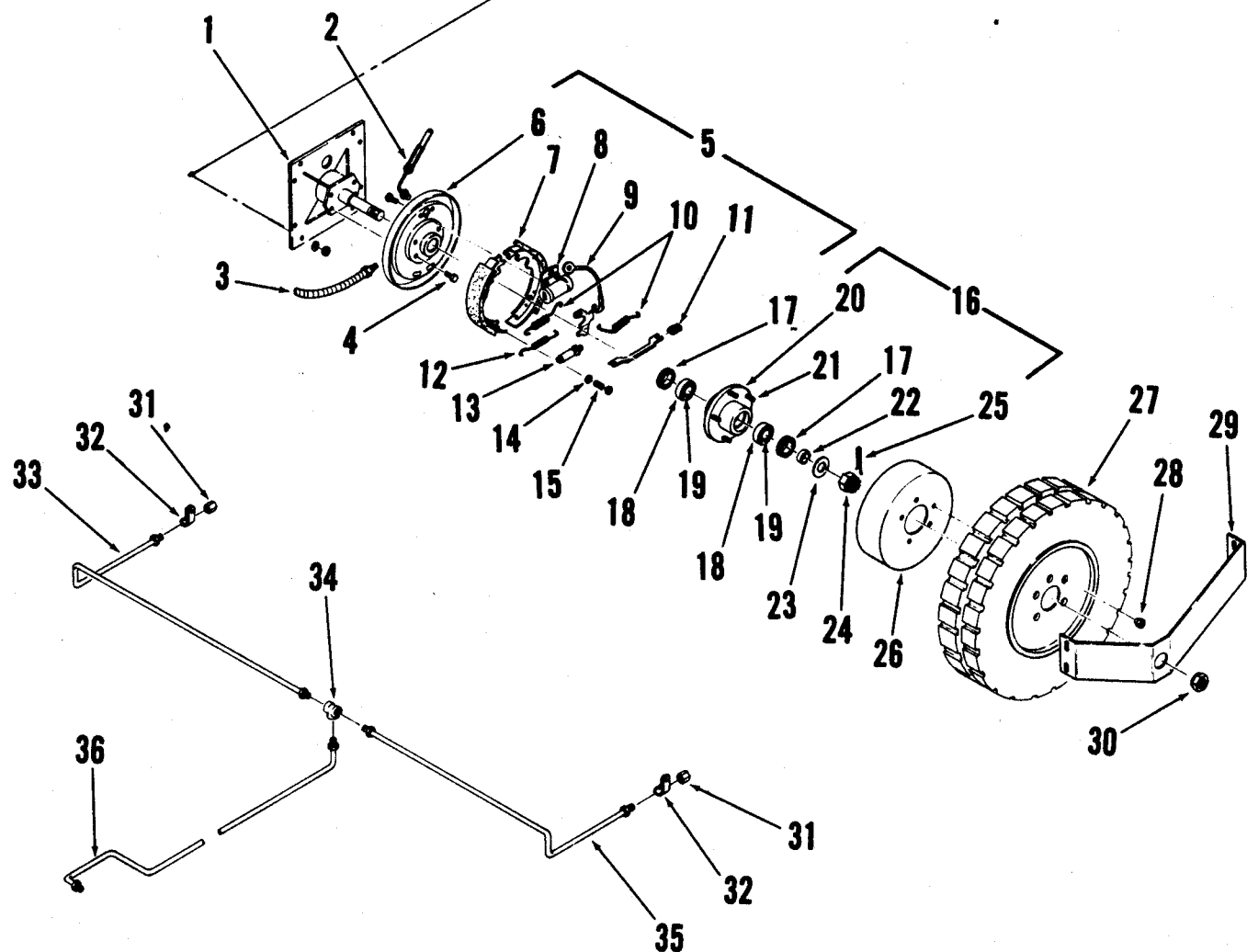
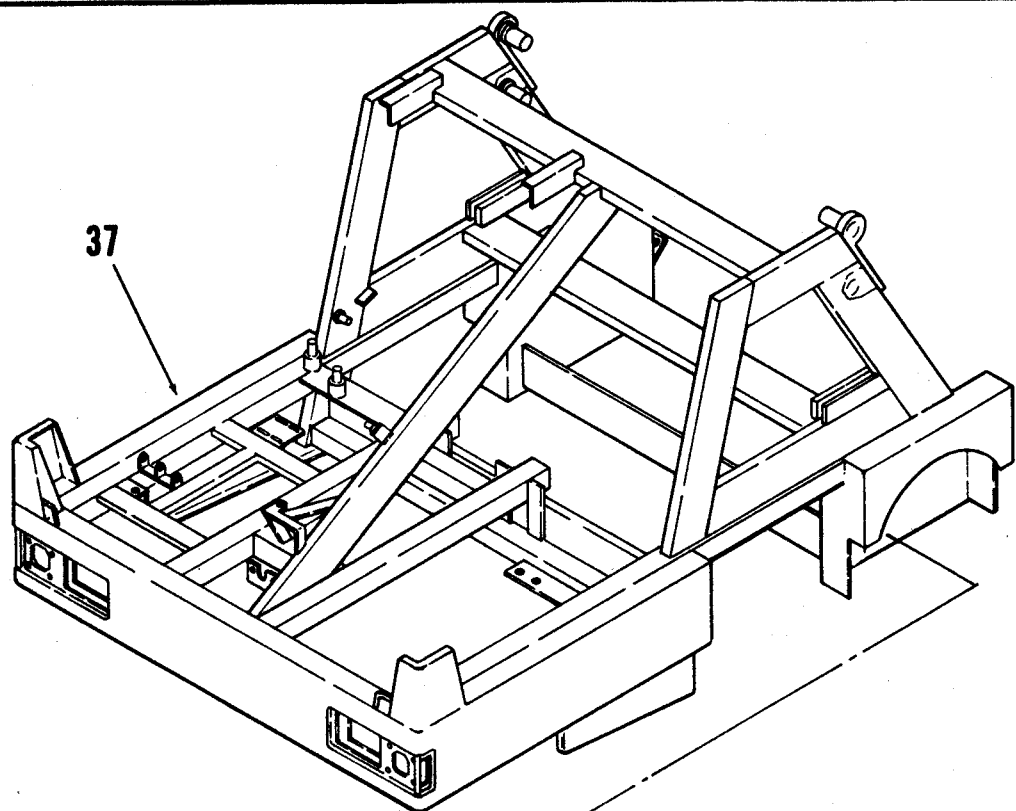
© 1986 Advance Machine Co. FORM NO. 042 154



10/86

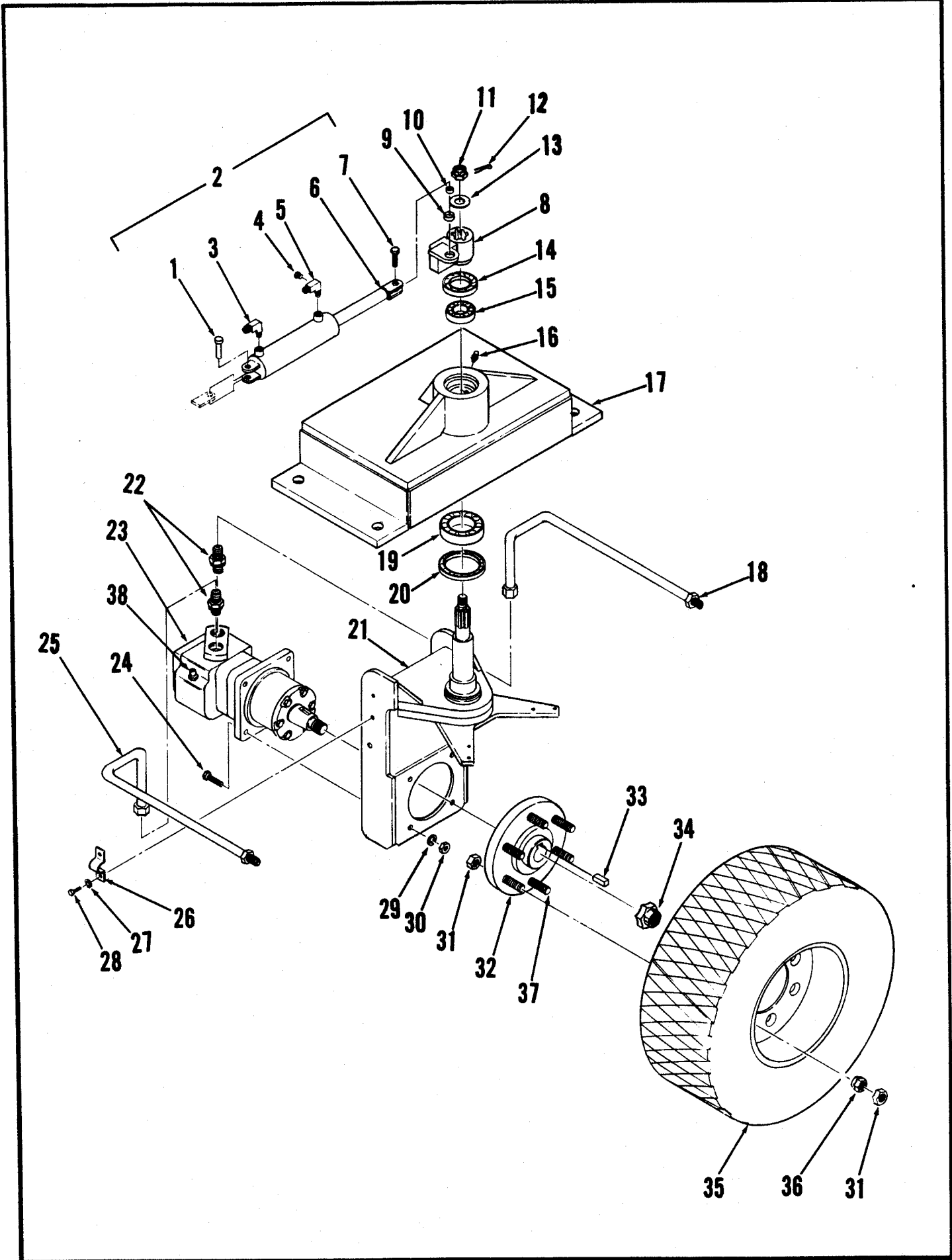
INDEX FOR FORM NUMBER 042154

<u>Description</u>	<u>Location</u>	<u>Page</u>
Brake Pedal & Lever	B13	23
Broom Housing & Front Skirt	A8	5
Broom, Main & Side Skirts	A10	7
Broom, Side	C9	33
Cab, Windshield Wiper, Air Conditioner	D3	41
Drive Pedal Linkage	B11	21
Dust Control Filter & Hopper	C5	29
Dust Control Impeller	C1	25
Engine Air Filter, Fuel Tank & Muffler	B1	11
Engine, Diesel	C13	37
Engine, Gas (4 cyl)	D11	49
Engine, Gas (8 Cyl)	A12	9
Hopper Arms	C3	27
Hydraulic Control Valves	B7	17
Hydraulic Diagram	D5	43
Hydraulic Oil Filters & Tank	B9	19
LP System	D1	39
Outer Body	C11	35
Radiator & Steering Column	B3	13
Skirt Lift Linkage & Seat	C7	31
Throttle & Choke Controls	B5	15
Wheel, Front Drive	A6	3
Wheel, Rear & Chassis	A4	1
Wiring Diagram, Diesel	D9	47
Wiring Diagram, Gas (4 cyl)	D13	51
Wiring Diagram, Gas (8 cyl)	D7	45



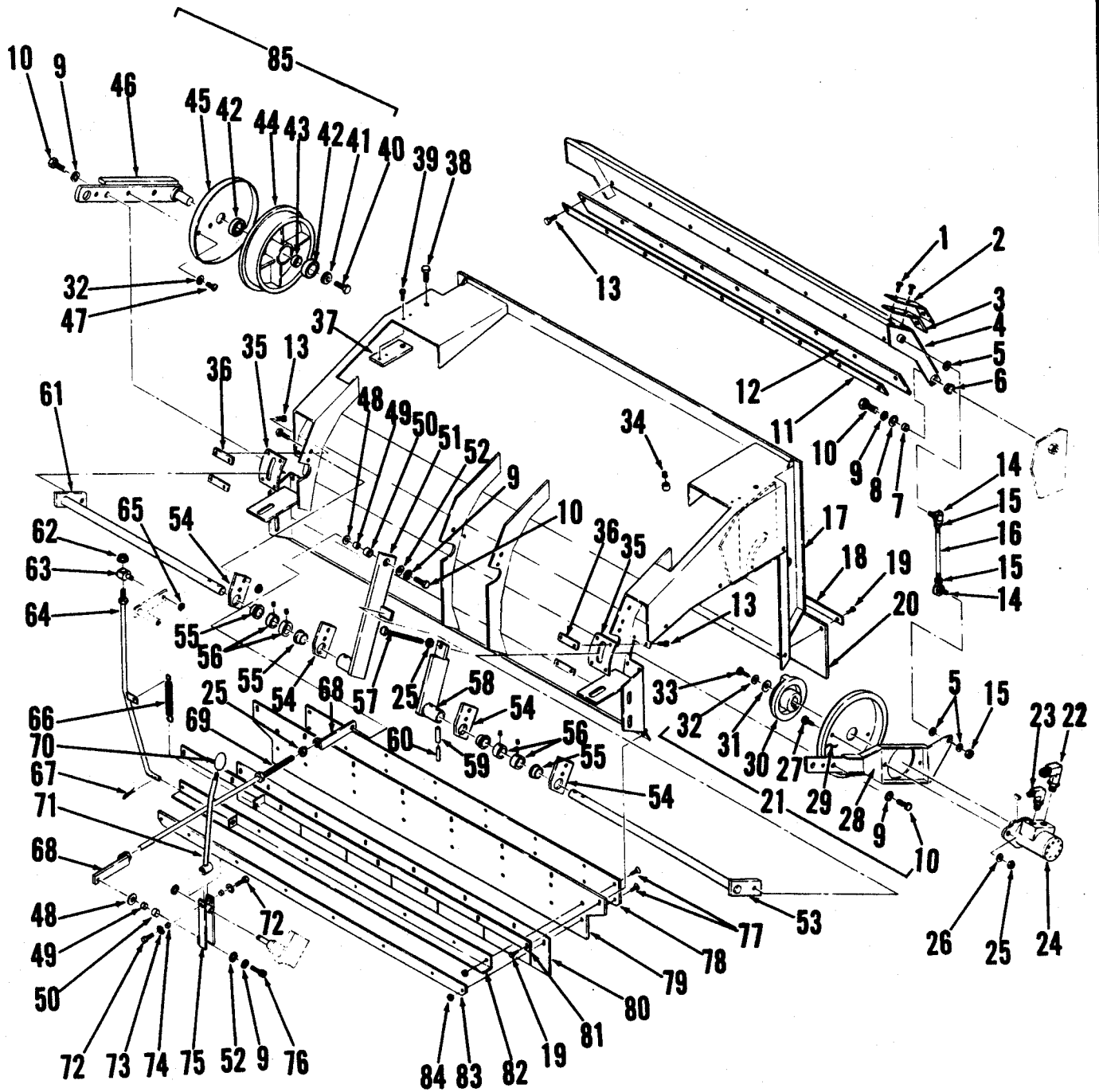
CHASSIS & REAR WHEELS

#	PART NO.	Q	DESCRIPTION
1	486 603	2	REAR WHEEL MOUNT
2	486 579	2	HOSE ASSEMBLY
3	486 563	2	BRAKE CABLE
4		4	SCREW, 3/8-16 x 5/8
5	486 565	1	BRAKE ASSEMBLY, L
	486 567	1	BRAKE ASSEMBLY, R
6	486 569	1	DUST SHIELD, L
	486 568	1	DUST SHIELD, R
7	486 571	2	BRAKE SHOE, SET
8	486 572	2	BRAKE CYLINDER
9	486 574	2	SELF ADJUSTING CABLE
10	486 575	4	SPRING
11	486 577	2	SPRING
12	486 578	2	SPRING
13	486 582	1	SELF ADJUSTER, L
	486 580	1	SELF ADJUSTER, R
14	486 585	8	SPRING CUP
15	486 583	4	SPRING
16	486 590	2	REAR HUB ASSY.
17	477 724	4	SHAFT SEAL
18	378 259	4	BEARING
19	378 267	4	BEARING
20	486 553	2	HUB
21	486 619	10	STUD
22	477 729	2	SPACER
23	101 656	2	WASHER
24	101 265	2	ADJUSTING NUT
25		2	COTTER PIN
26	486 561	2	BRAKE DRUM
27	486 587	2	TIRE
28	486 626	10	LUG NUT
29	486 597	2	WHEEL SUPPORT
30	486 623	2	AXLE NUT
31	486 384	2	UNION
32	486 559	2	CABLE CLAMP
33	486 573	1	RIGHT BRAKE LINE
34	486 581	1	UNION TEE
35	486 576	1	LEFT BRAKE LINE
36	486 570	1	BRAKE LINE
37	486 051	1	CHASSIS



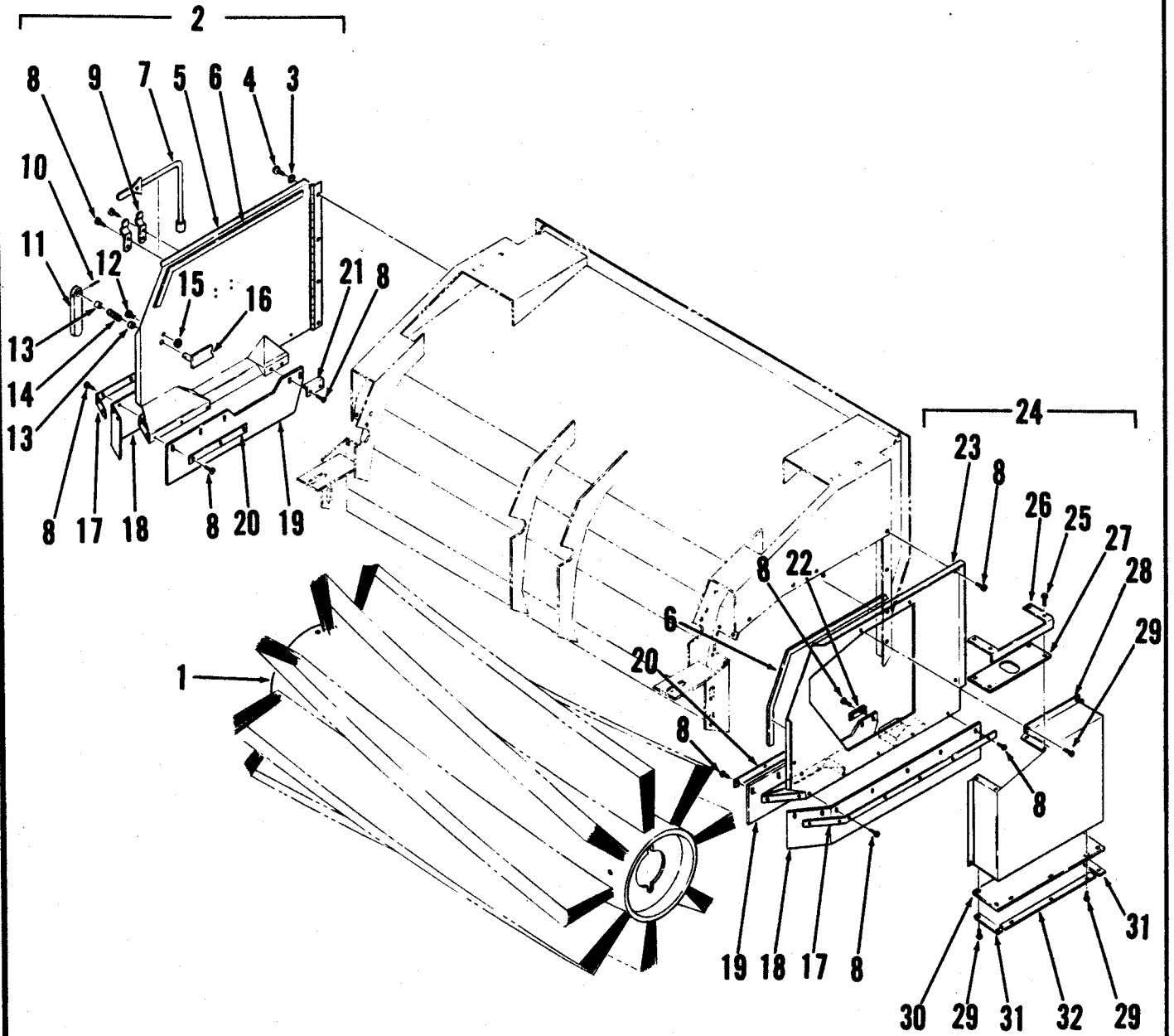
FRONT SPINDLE

#	PART NO.	Q	DESCRIPTION
1	486 733	1	PIN
2	488 798	1	CYLINDER ASSEMBLY
3	488 593	1	ELBOW, MALE
4	481 546	1	PIPE NIPPLE, 1/8 NPT
5	488 716	1	ELBOW, MALE
6	488 722	1	GEAR CASE CYLINDER
7		1	BOLT 1/2-13 X 1 3/4
8	491 728	1	ARM, PIVOT
9	491 698	1	SLEEVE BEARING
10	491 726	1	BUSHING
11	110 817	1	CASTLE NUT
12		1	COTTER PIN 1/8 X 2.00
13		1	FLAT WASHER 7/8
14	486 730	1	SHAFT SEAL 2.00
15	486 724	1	BEARING
16	344 362	1	LUBE FITTING
17	486 750	1	SPINDLE HOUSING
18	488 509	1	TUBE, DRIVE WHEEL
19	486 721	1	BEARING
20	486 727	1	SHAFT SEAL 3.00
21	486 781	1	SPINDLE
22	980 018	2	CONNECTOR
23	488 539	1	WHEEL MOTOR
24		4	BOLT 1/2-13 X 2 1/2
25	488 505	1	TUBE, DRIVE WHEEL
26	486 842	1	CLIP, TUBE ANCHOR
27		8	SHAKEPROOF WASHER 3/8
28		8	SCREW, HEX HD. 3/8-16 X 3/4
29		4	LOCKWASHER 1/2
30		4	HEX NUT 1/2-13
31		12	JAM NUT 3/4-16
32	486 713	1	HUB, WHEEL
33		1	KEY, SQ. .437 X 1.25
34		1	CASTLE NUT 1 1/4-18 UNEF - 2A
35	486 707	1	WHEEL 21 X 8.9
36	486 843	6	LUG NUT
37	486 716	6	STUD, WHEEL
38	980 001	1	CONNECTOR



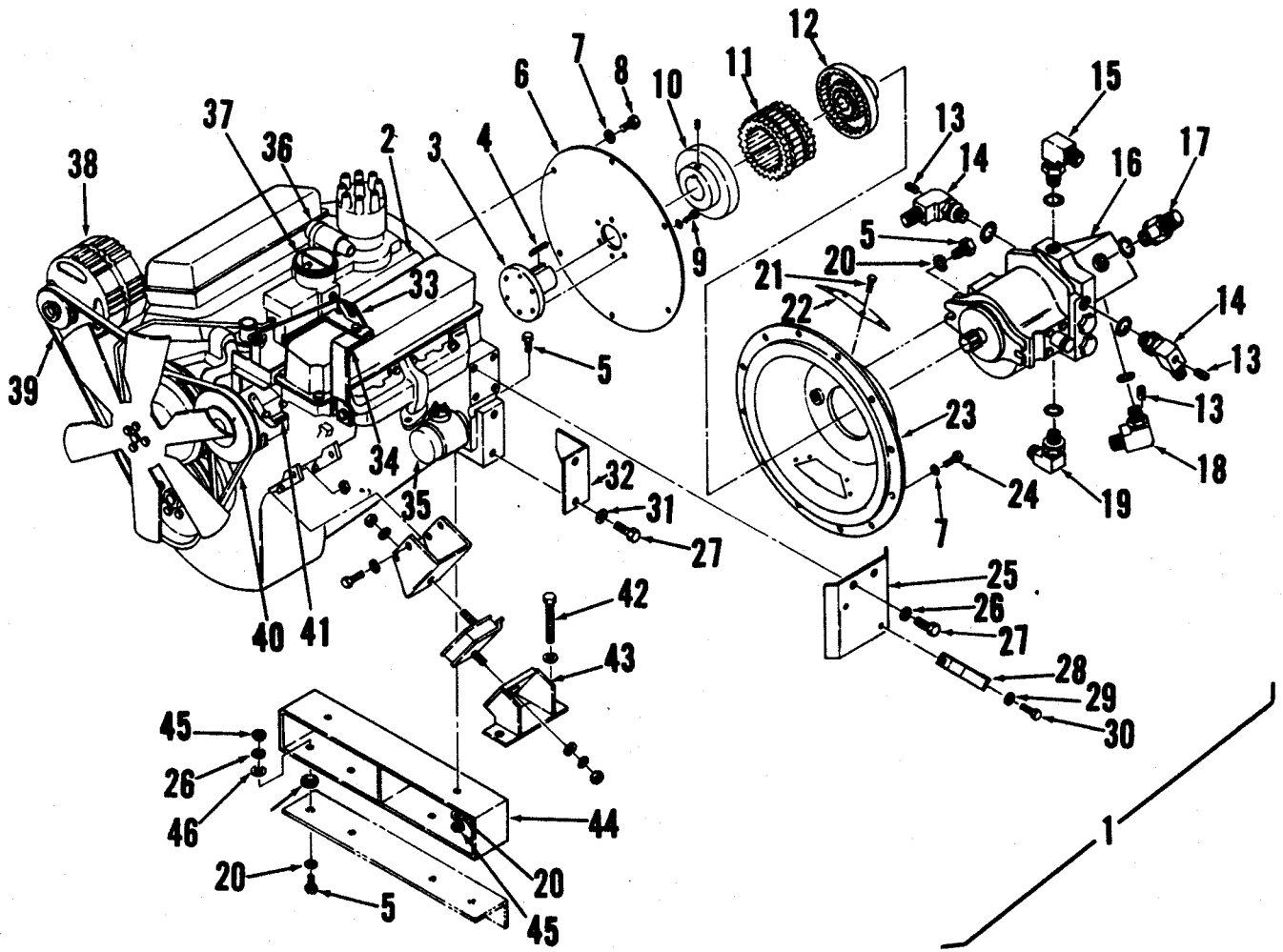
BROOM HOUSING ASSEMBLY

#	PART NO	Q	DESCRIPTION	#	PART NO	Q	DESCRIPTION
1		6	SCREW #10-24 X 1/2 HP5	65	321 427	1	RETAINING RING 3/8 EXT
2	491 724	2	STRAP	66	448 119	1	SPRING, EXTENSION
3	491 674	2	BLADE, NEOPRENE	67		1	COTTER PIN 1/8 X 1 1/2
4	486 915	1	BAFFLE	68	486 452	2	YOKE
5		3	LOCKWASHER 5/16	69	486 456	1	TURNBUCKLE
6	491 652	2	BEARING, FLANGE	70	364 527	1	KNOB
7	367 486	2	BUSHING .50 X .62 X .72	71	487 929	1	HANDLE
8	367 214	2	WASHER .515 X .93 X .07	72		2	SCREW 5/16-18 X 5/8
9		4	SHAKEPROOF WASHER 1/2	73		2	SHAKEPROOF WASHER 5/16
10		4	HEX SCREW 1/2-13 X 1.0	74	244 941	2	BUSHING
11	487 072	1	STRAP	75	487 920	1	LEVER, HANDLE
12	486 851	1	BLADE, GUARD	76		1	SCREW 1/2-13 X 1/0
13		17	WASHER #10-24 X 3/8 HP5	77		16	SCREW 1/4-20 X 7/8
14	491 696	2	BEARING ROD END	78	486 655	1	STRAP
15		3	JAM NUT 5/16-24 VNF	79	489 180	1	SKIRT, FRONT
16	491 722	1	ROD	80	489 182	1	SKIRT, FRONT
17	489 125	1	BROOM HOUSING	81	491 712	1	STRAP
18	487 069	1	STRAP	82	486 656	1	ANGLE
19		16	SCREW 1/4-20 X 5/8 HP5	83	489 181	1	STRAP
20	491 786	1	BLADE, REAR	84		16	WHIZ NUT 1/4-20
21	487 023	1	BROOM ARM ASSY.	85	479 428	1	IDLER ARM ASSY.
22	900 525	1	ELBOW				
23	900 105	1	ELBOW				
24	488 527	1	MOTOR, BROOM				
25		3	HEX NUT 1/2-13				
26		2	LOCKWASHER 1/				
27		2	SCREW 1/2-13 X 1 1/4				
28	491 756	1	ARM				
29	479 442	1	STRING GUARD				
30	477 762	1	DRIVER HUB				
31	159 387	1	WASHER				
32		2	LOCKWASHER 1/4				
33		1	SCREW 1/4-20 X 7/8				
34	106 046	1	PIPE PLUG 1/8 BRASS				
35	477 572	2	SHIELD				
36	477 570	4	NUT PLATE #10-24				
37	491 896	2	NUT PLATE				
38		2	SCREW 1/2-13 X 1 3/4				
39		2	SCREW #10-24 X 5/8				
40		1	SCREW 5/16-18 X 3/4				
41	358 959	1	WASHER				
42	479 430	2	BEARING				
43	479 434	1	SPACER				
44	477 760	1	IDLER HUB				
45	479 439	1	STRING GUARD				
46	479 438	1	ARM, IDLER				
47		2	SCREW 1/4-20 X 5/8				
48	367 192	2	WASHER				
49	367 026	2	BUSHING				
50	491 660	2	BEARING, SLEEVE				
51	487 044	1	LEVER				
52	367 214	2	WASHER				
53	487 035	1	SHAFT LEVER-LEFT				
54	487 059	4	BLOCK, PILLOW				
55	491 650	4	FLANGE BEARING				
56	444 820	4	COLLAR				
57	479 513	1	SCREW, ADJUSTING				
58	479 459	1	LEVER				
59		4	SPRING PIN 5/16 X 1 3/4				
60		4	SPRING PIN 3/16 X 1 3/4				
61	487 038	1	LEVER				
62		1	WHIZ NUT 3/8-16				
63	491 716	1	SWIVEL				
64	491 706	1	ROD				



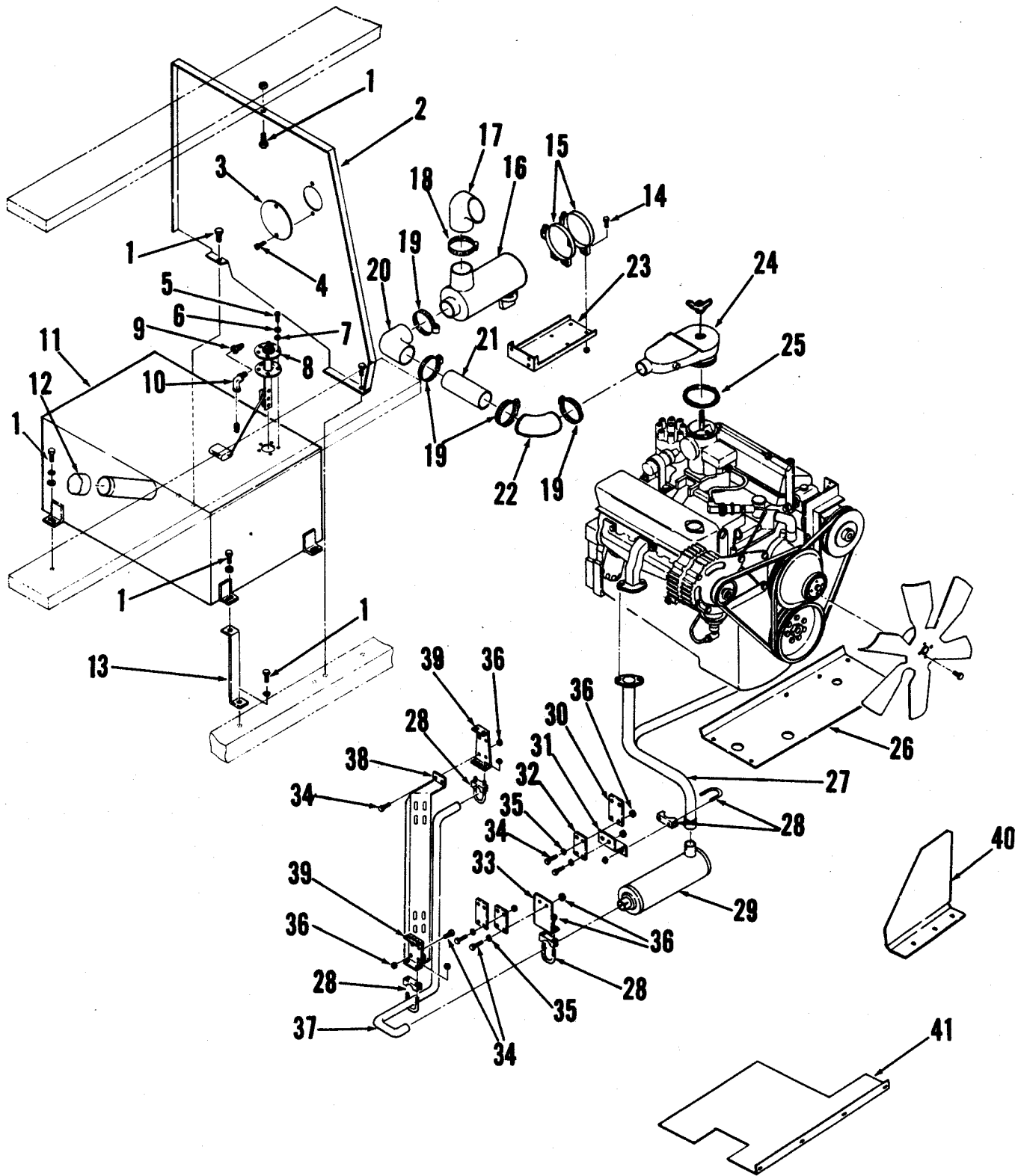
MAIN BROOM & SIDE DOORS

#	PART NO.	Q	DESCRIPTION
1	486 015	1	STD. MAIN BROOM (16 ROW POLYCORN & POLYPROPYLENE)
	486 014	1	OPT. MAIN BROOM (8 ROW POLYCORN & POLYPROPYLENE)
	486 013	1	OPT. MAIN BROOM (16 ALTERNATING ROWS POLYCORN & POLYPROPYLENE)
	486 017	1	OPT. MAIN BROOM (12 ROW CRINKLE WIRE)
2	489 121	1	DOOR ASSEMBLY
3		4	WASHER, SHAKEPROOF
4		4	SCREW, PAN HD. 1/4 - 20 x 3/4 HP-5
5	489 110	1	DOOR
6	479 854	AR	GASKET RS 1/8 x 3/4 x 52.5
7	477 598	1	TOOL
8		23	SCREW PAN HD. #10 - 24 x 1/2 HP-5
9	477 620	2	CLAMP
10		1	SPRING PIN
11	479 371	1	HANDLE
12		1	SCREW, PAN HD
13	491 658	2	SLEEVE BEARING
14	491 900	1	SPRING
15		1	HEX NUT 1/4 - 20
16	479 377	1	LATCH
17	489 120	2	STRAP
18	491 784	2	OUTER SKIRT
19	491 785	2	INNER SKIRT
20	486 646	2	STRAP
21	489 186	1	STRAP, RIGHT
22	489 184	1	STRAP, LEFT
23	489 115	1	PANEL
24	489 122	1	PANEL ASSEMBLY
25		4	SCREW, HEX HD. #10 - 24 x 1/2
26	487 050	1	STRAP
27	486 858	1	BOOT
28	486 945	1	BROOM MOTOR COVER
29		11	SCREW, HEX HD. 1/4 - 20 x 1/2 HP-5
30	491 912	1	BLADE
31	491 916	2	STRAP
32	491 914	1	STRAP



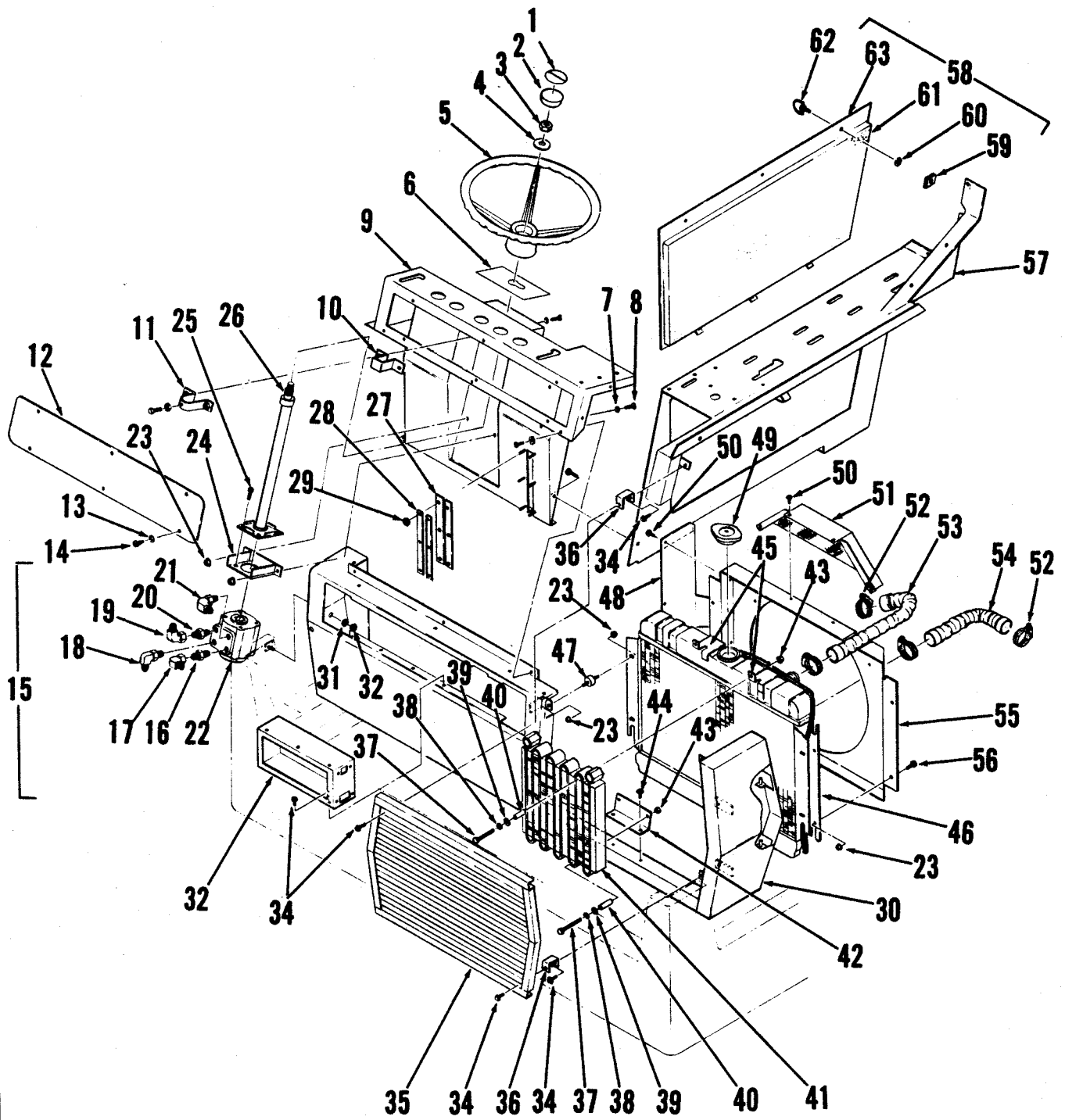
ENGINE ASSEMBLY-GAS

#	PART NO.	Q	DESCRIPTION
1	487 152	1	ENGINE ASSEMBLY
2	487 155	1	ENGINE 154 CHRYSLER
3	487 176	1	DRIVE ADAPTOR
4	744 469	1	KEY
5		8	1/2-13 x 1-1/2 BOLT
6	487 170	1	FLYWHEEL PLATE
7		18	3/8 SHAKEPROOF WASHER
8	487 171	6	SCREW
9		6	3/8-16 SCREW
10	487 182	1	COUPLING
11	487 185	1	SLEEVE
12	487 179	1	COUPLING
13	481 546	3	PLUG
14	900 117	2	ELBOW
15	488 636	1	ELBOW
16	488 521	1	HYDR-TRANS PUMP
17	900 009	1	CONNECTOR
18	488 713	1	ELBOW
19	900 105	1	ELBOW
20	487 252	2	WASHER
21		8	10-24 SCREW
22	487 168	2	BELL HOUSING COVER
23	486 030	1	BELL HOUSING
24		12	3/8-16 x 3/4 BOLT
25	487 435	1	BRACKET
26		6	1/2 LOCK WASHER
27		4	1/2-13 x 1/2 BOLT
28	487 437	1	HOSE CLAMP
29		2	1/4 LOCK WASHER
30		2	1/4-20 x 3/8 SCREW
31		2	1/2 SHAKEPROOF WASHER
32	487 249	1	HOUSING PLATE
33	487 215	1	THROTTLE ANCHOR
34	487 224	1	BRACKET
35	491 602	1	STARTER
36	491 546	1	IGNITION COIL
37	491 505	1	CARBURETOR
38	491 527	1	ALTERNATOR
39	491 577	1	ALTERNATOR BELT
40	491 556	1	GOVERNOR BELT
41	491 583	1	GOVERNOR <i>TSB 429, G-10</i>
42		4	1/2-13 x 4 BOLT
43	487 191	2	ENGINE MOUNT
44	487 206	1	CHANNEL
45		6	1/2-13 NUT
46	480 742	4	WASHER



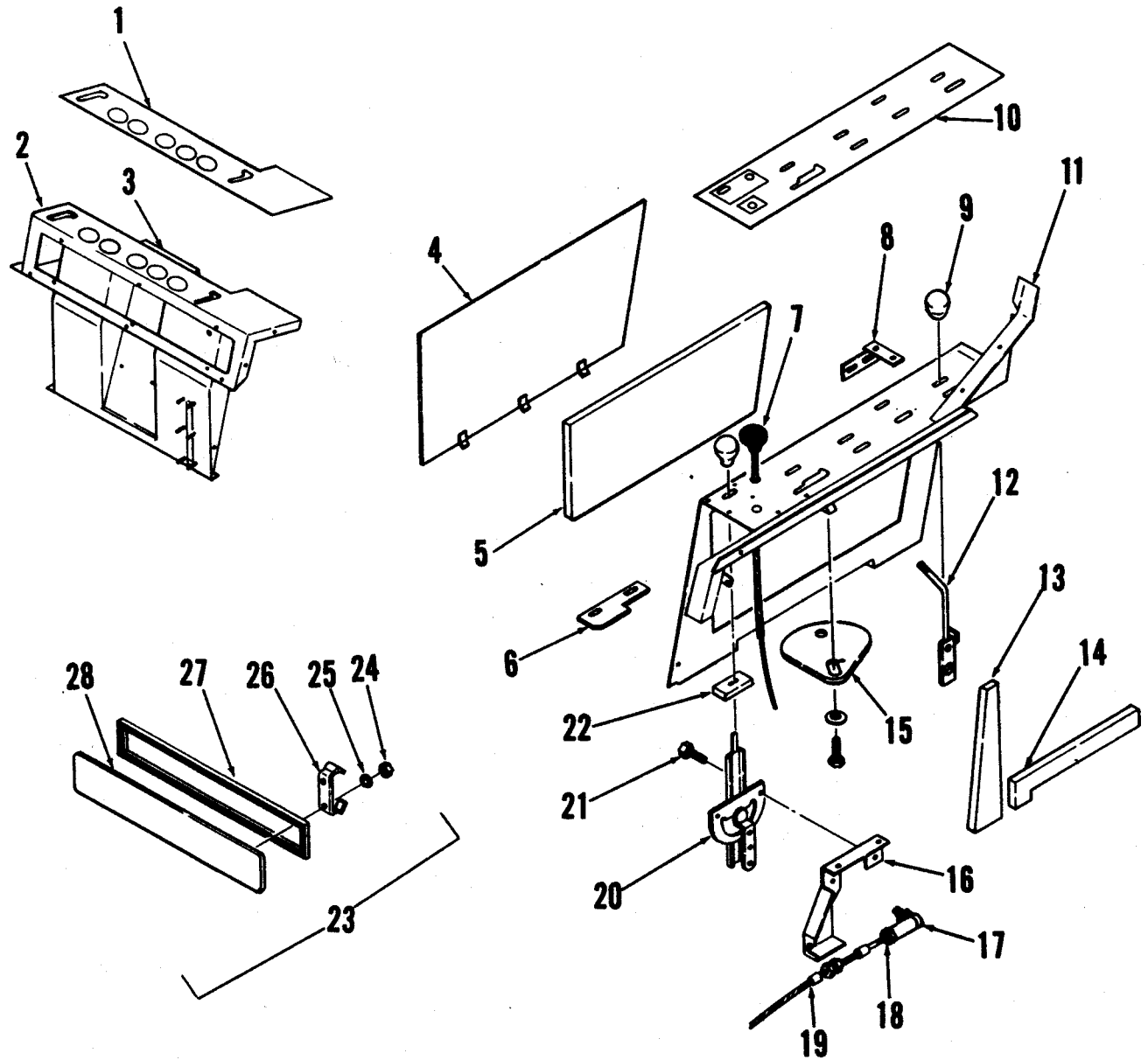
EXHAUST SYSTEM, AIR CLEANER, & FUEL TANK

#	PART NO.	Q	DESCRIPTION
1		8	5/16-18 x 1 SCREW
		8	WITH WHIZ NUT
2	490 923	1	BAFFLE PANEL
3	490 926	1	COVER PLATE
4		2	10-32 x 3/8 SCREW
5		5	10-32 x 7/16 SCREW
6		5	#10 LOCKWASHER
7		5	#10 FLAT WASHER
8	478 358	1	FUEL SENDER
9	487 522	1	BARB
10	111 295	1	ELBOW
11	488 904	1	FUEL TANK
12	478 502	1	FUEL TANK CAP
13	488 928	2	BRACKET
14		4	1/4-20 x 1/2 SCREW
15	487 326	2	MOUNTING BAND
16	487 311	1	AIR CLEANER ASSEMBLY C/O
	487 313	1	SECONDARY ELEMENT
	487 315	1	PRIMARY ELEMENT
	487 319	2	NUT ASSY.
	487 321	1	CLAMP ASSY.
	487 325	1	BAFFLE
	487 327	1	CUP ASSY.
	487 331	1	VACUATOR VALVE
17	487 317	1	AIR INTAKE TUBE
18	487 341	1	HOSE CLAMP
19	352 829	4	HOSE CLAMP
20	487 337	1	ELBOW REDUCER
21	487 340	1	AIR INTAKE TUBE
22		1	ELBOW REDUCER
23	487 329	1	AIR CLEANER BRACKET
24	491 607	1	ELBOW ASSEMBLY
25	491 603	1	GASKET
26	487 379	1	BAFFLE PLATE
27	487 288	1	EXHAUST PIPE
28	487 263	4	MUFFLER CLAMP
29	487 260	1	MUFFLER
30	487 292	2	PLATE
31	487 298	1	ANGLE BRACKET
32	478 726	2	DIAPHRAGM MOUNT
33	487 295	1	ANGLE
34		12	1/4-20 x 1/2 SCREW
35		12	1/4 FLAT WASHER
36		12	1/4-20 WHIZ NUT
37	487 274	1	TAIL PIPE
38	487 307	1	TAIL PIPE SHIELD
39	487 301	2	HANGER BRACKET
40	491 792	1	AIR DEFLECTOR
41	487 309	1	HEAT DEFLECTOR



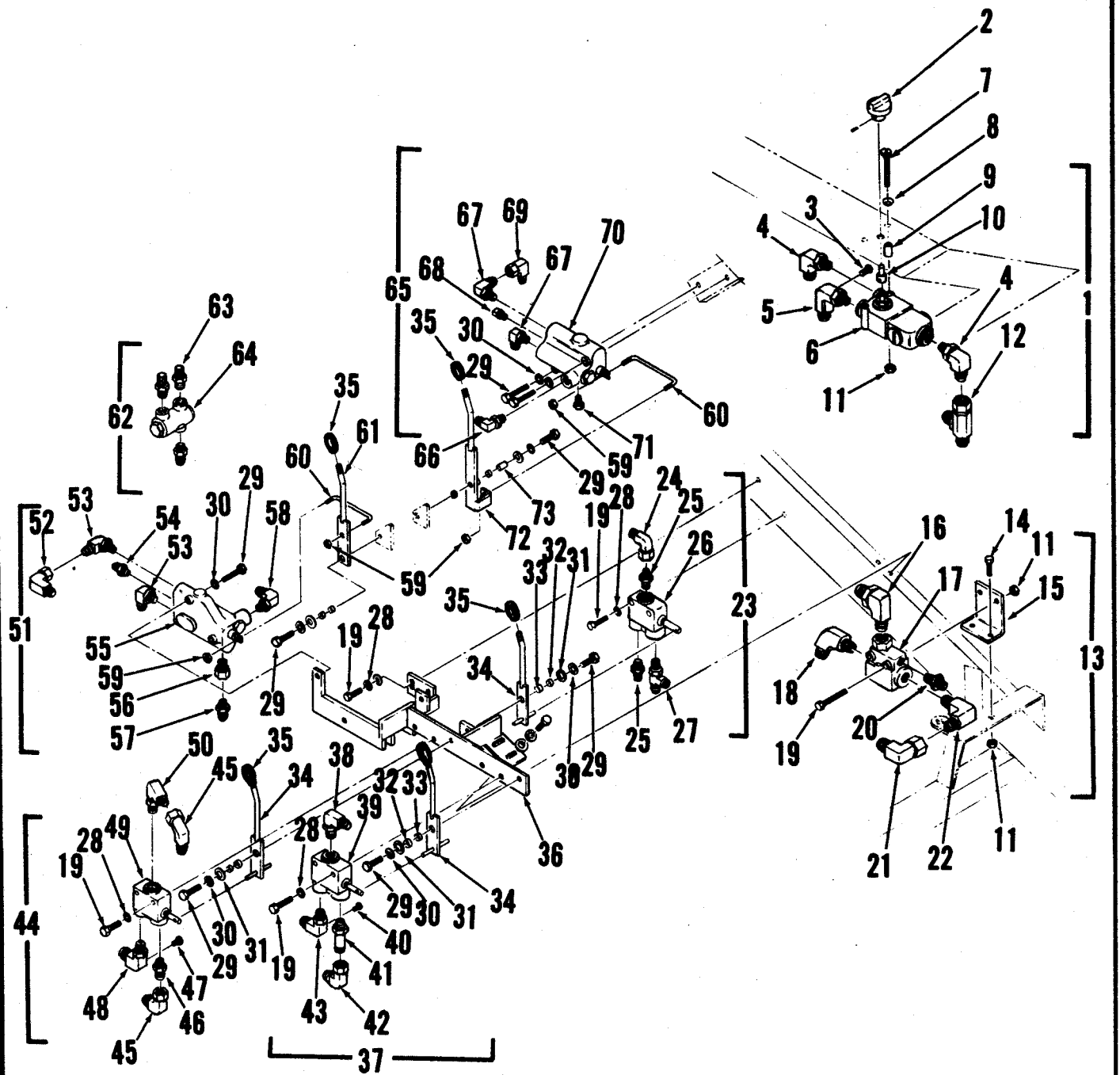
CONTROL PANEL, STEERING, & RADIATOR

#	PART NO.	Q	DESCRIPTION
1	016 754	1	DECAL, STEERING WHEEL
2	449 774	1	CAP
3	488 795	1	NUT, STEERING WHEEL
4		1	WASHER 13/16
5	449 766	1	STEERING WHEEL
6	026 017	1	DECAL, IGNITION
7	481 830	1	FINISHING WASHER
8		1	SCREW, OVAL HD. 1/4 - 20 X 1/2
9	490 574	1	FRONT CONTROL PANEL
10	488 022	1	BRACKET
11	488 025	1	BRACKET
12	490 723	1	COVER
13	449 340	6	FINISHING WASHER
14		6	SCREW, OVAL HD. #10-24 X 1/2
15	488 558	1	STEERING CONTROL ASSY
16	900 013	1	CONNECTOR O/R - 6 - 8
17	900 303	1	ELBOW 90 DEGREE W/NUT - 6
18	488 642	1	ELBOW 90 DEGREE
19	900 305	1	ELBOW
20	488 612	1	CONNECTOR ST. THD.
21	900 112	1	ELBOW
22	488 530	1	STEERING CONT. UNIT
23		11	WHIZ NUT 1/4-20
24	488 019	1	POWER STEERING BRACKET
25	744 576	4	CAP SCREW 3/8-16 X 7/8
26	488 532	1	STEERING COLUMN
27	490 589	2	GASKET
28	490 592	2	STRAP
29		14	WHIZ NUT #10-24
30	490 734	1	FRONT PANEL FRAME
31		4	LOCKWASHER 1/2
32		4	HEX NUT 1/2-13
33	489 692	1	ELECTRICAL BOX
34		13	SCREW, #10-24 X 1/2 HP-5
35	490 771	1	GRILL
36	488 492	4	CLIP
37		4	BOLTS, 5/16-18 X 2 1/4
38		4	LOCKWASHER 5/16
39		4	FLAT WASHER 3/8
40	488 487	4	SPACER
41	487 380	1	OIL COOLER
42	488 486	4	COOLER MOUNTING BRACKET
43		4	WHIZ NUT 5/16-18
44		2	SCREW, HEX WASH. HD. 1/4-20 X 3/8 HPS
45	488 489	2	COOLER MOUNTING BRACKET
46	487 351	1	RADIATOR
47	478 684	4	RUBBER MOUNT
48	491 818	1	AIR DEFLECTOR
49	456 431	1	RADIATOR CAP
50		7	SCREW, #8-32 X 1/2 HP-5
51	487 358	1	FAN GUARD
52	440 213	4	HOSE CLAMP
53	487 357	1	HOSE
54	491 918	1	HOSE
55	487 361	1	SHROUD, RAD. FAN
56		4	SCREW, HEX HD. 1/4-20 X 1/2
57	490 614	1	SIDE CONTROL PANEL TSB 397, G-11
58	490 651	1	DOOR ASSEMBLY
59	468 960	3	SCREW RECEPTICAL
60	448 108	3	RETAINING WASHER
61	490 653	1	INSULATING FOAM
62	448 104	3	FASTENER
63	490 654	1	DOOR



THROTTLE & CHOKE

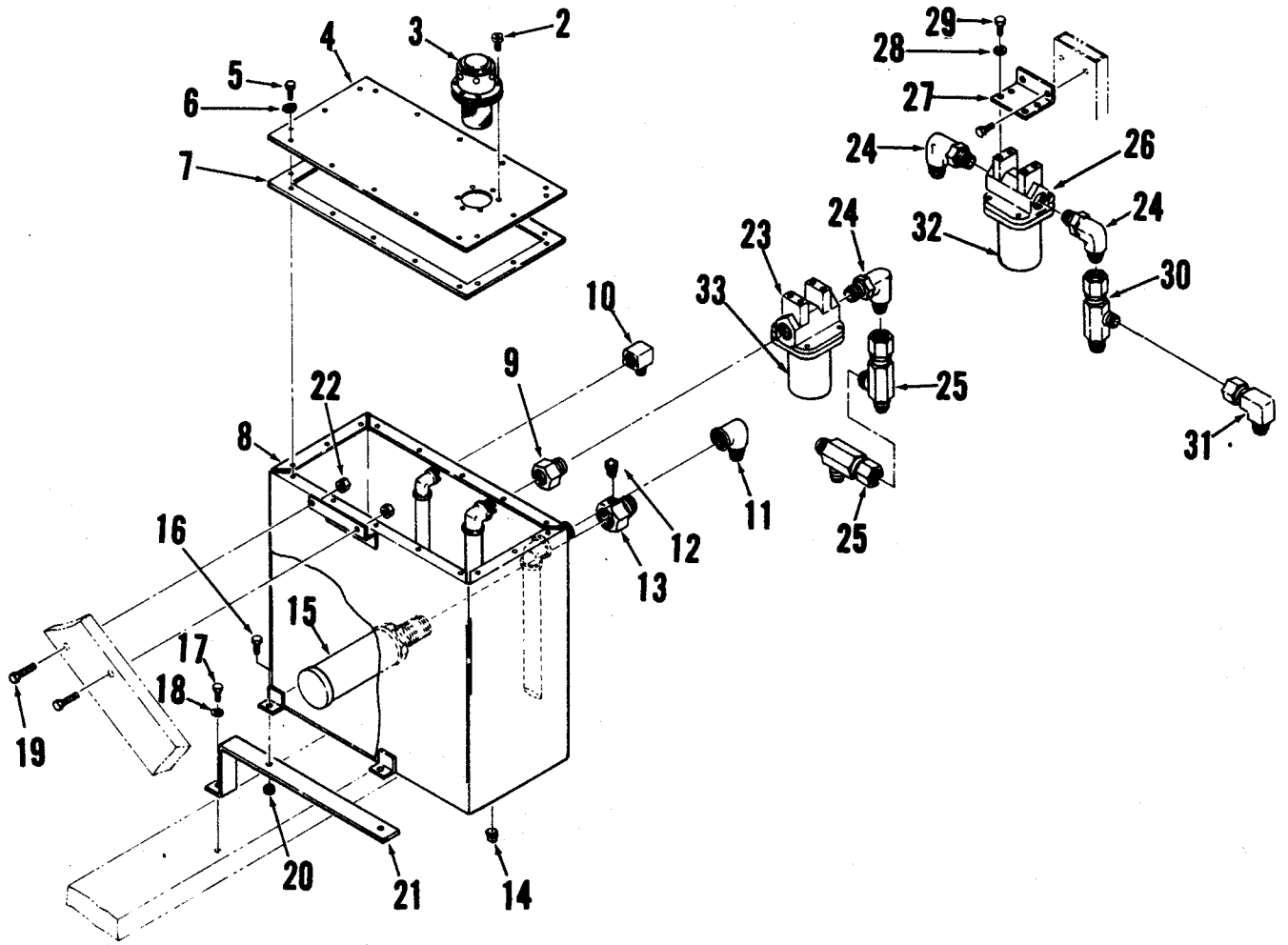
#	PART NO.	Q	DESCRIPTION
1	026 070	1	FRONT CONTROL DECAL
2	490 374	1	FRONT PANEL
3	026 017	1	IGNITION DECAL
4	490 654	1	DOOR
5	490 653	1	INSULATING FOAM
6	487 243	1	THROTTLE STOP
7	760 210	1	CHOKE CONTROL
8	487 995	1	SWITCH PLATE
9	440 817	1	KNOB
10	026 011	1	SIDE CONTROL DECAL
11	490 614	1	SIDE CONTROL PANEL
12	487 971	1	SHAKER LEVER
	368 989	1	BUSHING
	491 658	1	BEARING
	163 767	1	SPRING WASHER
		1	1/4-20 X 5/8 SCREW
		1	1/4-20 HEX NUT
13	490 714	1	INSULATING FOAM
14	490 711	1	INSULATING FOAM
15	488 031	1	PLASTIC SEAL
16	487 227	1	THROTTLE MOUNT
17	488 290	1	BALL JOINT
18		5	#10-24 HEX NUT
19	488 292	1	THROTTLE CABLE
20	456 328	1	THROTTLE LEVER
21		2	1/4-20 X 1/2 SCREW
22	488 004	8	FOAM GASKET
23	490 690	1	COVER ASSEMBLY
24		4	1/4-20 HEX NUT
25		4	1/4 SHAKEPROOF WASHER
26	490 687	2	CLIP
27	200 754	1	GASKET
28	490 678	1	COVER



CONTROL VALVES & FITTINGS

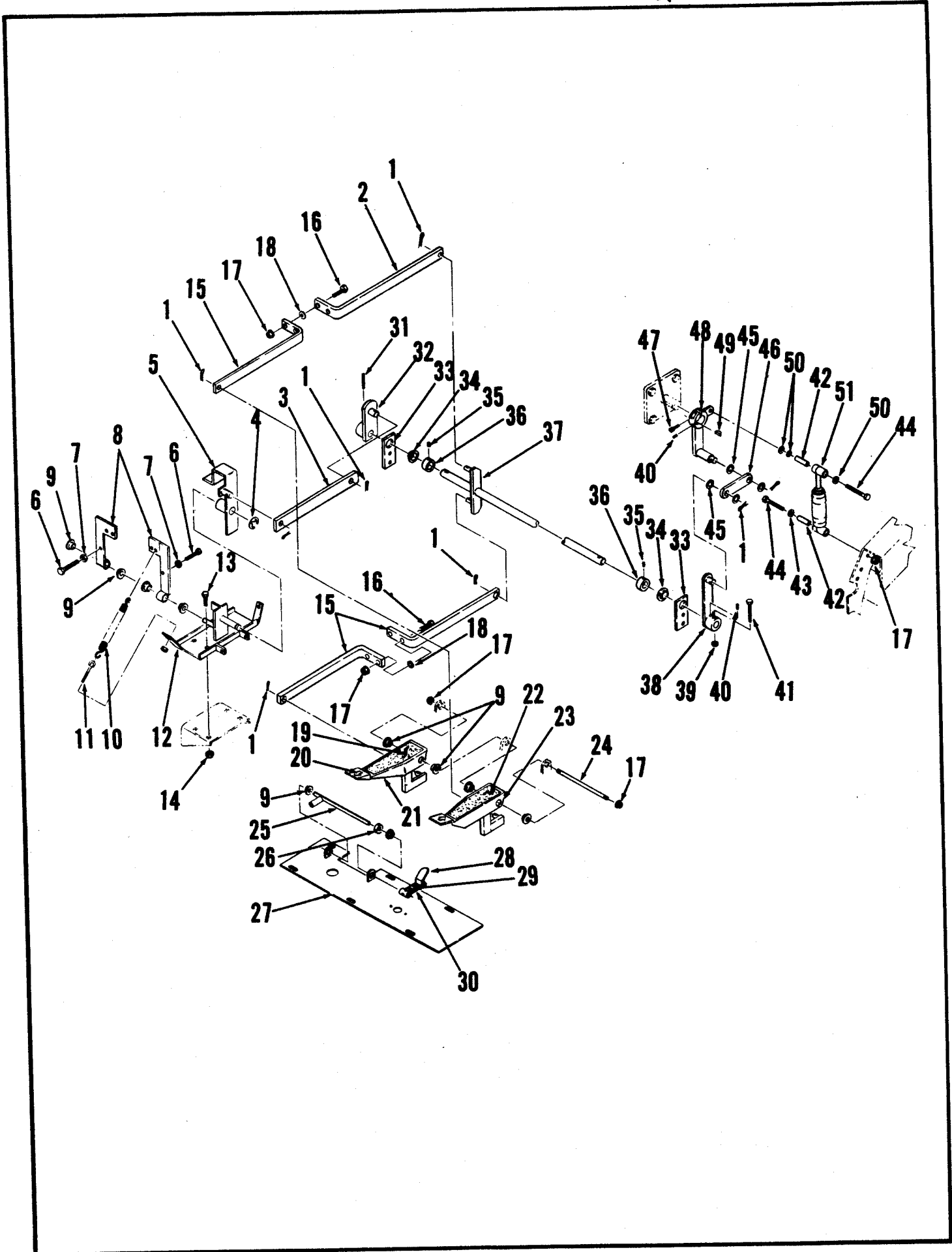
#	PART NO.	Q	DESCRIPTION	#	PART NO	Q	DESCRIPTION
1	488 546	1	VALVE	65	488 550	1	HOPPER LIFT VALVE
2	290 940	1	KNOB	66	900 101	1	ELBOW 90° O/R-4
3	481 546	1	PLUG 1/8-27 NPT	67	488 642	2	ELBOW 90°
4	900 105	2	ELBOW 90°	68	900 001	1	CONNECTOR O/R-4
5	488 646	1	ELBOW 90°	69	900 305	1	ELBOW 90° W/NUT
6	488 511	1	VALVE	70	488 519	1	VALVE, CONTROL
7		2	SCREW, 1/4-20	71	488 602	1	PLUG
8	481 830	2	FINISHING WASHER	72	487 944	1	LEVER
9	468 553	2	BUSHING	73	300 241	1	BUSHING
10	488 163	1	SPACER				
11		6	WHIZ NUT 1/4-20				
12	900 345	1	RUN TEE W/NUT-10				
13	488 544	1	VALVE ASSY.				
14		2	SCREW, 1/4-20				
15	488 804	1	BRACKET, VALVE				
16	488 598	1	ELBOW, MALE				
17	488 508	1	VALVE, FLOW DVDR.				
18	488 587	1	ELBOW, MALE 90°				
19		8	SCREW, 1/4-20				
20	488 615	1	CONNECTOR, MALE				
21	900 305	1	ELBOW 90°				
22	488 595	1	ELBOW, MALE				
23	488 556	1	SIDE BROOM VALVE				
24	900 305	1	ELBOW 90°				
25	900 005	2	CONNECTOR O/R-10				
26	488 514	1	VALVE				
27	900 205	1	RUN TEE, ST. THD				
28		6	SHAKEPROOF WSHR				
29		23	SCREW, 5/16-18				
30		23	SHAKEPROOF WSHR				
31		23	FLAT WASHER 5/16				
32	244 941	10	BUSHING				
33	366 633	8	SLEEVE BEARING				
34	487 935	3	LEVER				
35	378 534	5	KNOB				
36	488 381	1	BRACKET, VALVE				
37	488 552	1	MAIN BROOM VALVE				
38	900 105	1	ELBOW 90° O/R-10				
39	488 514	1	VALVE				
40	481 546	1	PLUG 1/8-27 NPT				
41	900 055	1	CONNECTOR				
42	900 305	1	ELBOW 90° W/NUT				
43	488 646	1	ELBOW 90°				
44	488 554	1	VAC FAN VALVE				
45	900 305	2	ELBOW 90° W/NUT				
46	900 005	1	CONNECTOR				
47	481 546	1	PLUG 1/8-27 NPT				
48	488 646	1	ELBOW 90°				
49	488 514	1	VALVE, SELECTOR				
50	900 105	1	ELBOW 90° O/R-10				
51	488 548	1	HOPPER DOOR VALVE				
52	900 305	1	ELBOW 90° W/NUT				
53	448 642	2	ELBOW 90°				
54	900 001	1	CONNECTOR				
55	488 519	1	VALVE, CONTROL				
56	488 600	1	PRESSURE PLUG				
57	488 612	1	CONNECTOR				
58	900 101	1	ELBOW 90° O/R-4				
59		4	HEX NUT #10-24				
60	477 988	2	LINKAGE				
62	488 566	1	RELIEF VALVE ASSY				
63	488 612	3	CONNECTOR				
64	488 524	1	VALVE, RELIEF				

— 1 —



HYDRAULIC RESERVOIR

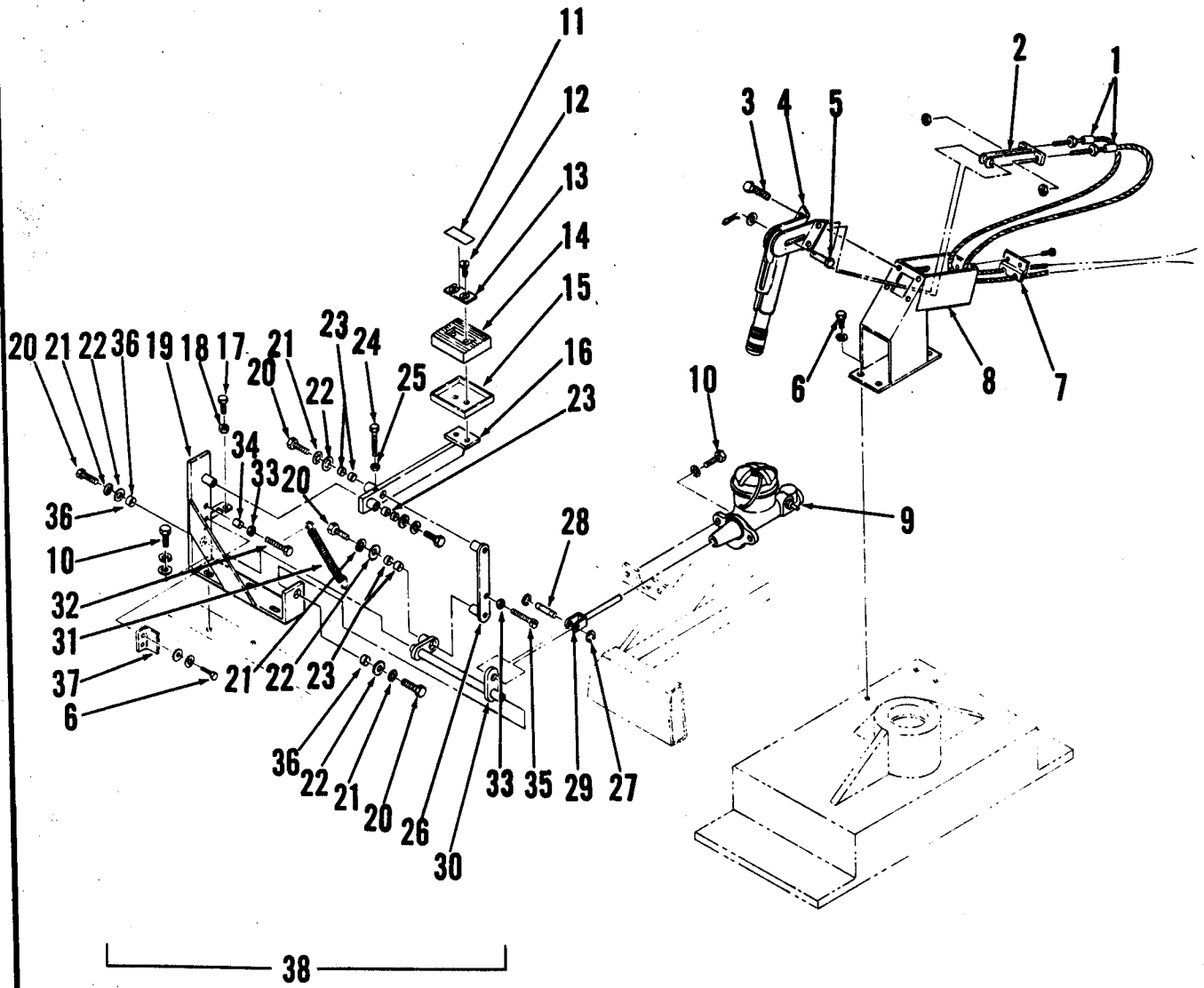
#	PART NO.	Q	DESCRIPTION
1	488 663	1	RESERVOIR ASSEMBLY
2		6	SCREW, 10 - 24 x 3/4
3	479 656	1	FILLER CAP
4	488 669	1	RESERVOIR COVER
5		16	SCREW, 10 - 24 x 1/2
6		16	LOCKWASHER, 10
7	200 754	1	GASKET
8	488 666	1	RESERVOIR TANK
9	488 659	1	PIPE ADAPTER
10	488 657	1	ELBOW, FEMALE
11	900 582	1	ELBOW, FEMALE
12	481 546	1	PLUG
13	488 655	1	CONNECTOR, FEMALE
14	113 182	1	PIPE PLUG
15	488 538	1	STRAINER
16		2	SCREW, 1/4 - 20 x 1
17		1	SCREW, HEX HD. 7/16 - 18 x 1/2
18		1	WASHER, SHAKEPROOF 7/16
19		2	SCREW, 3/8 - 16 x 1 1/2
20		2	WHIZ NUT, 3/8 - 16
21	488 707	1	RESERVOIR SUPPORT BRACKET
22		2	WHIZ NUT, 3/18 - 16
23	456 994	1	OIL FILTER
24	900 116	3	ELBOW
25	900 345	2	TEE
26	457 001	1	OIL FILTER
27	488 562	1	OIL FILTER BRACKET
28		4	LOCKWASHER, 3/8
29		4	SCREW, 3/8 - 16 x 1/2
30	900 345	1	TEE
31	900 305	1	ELBOW
32	496 209	1	FILTER ELEMENT
33	456 985	1	FILTER ELEMENT



ACCELERATOR LINKAGE

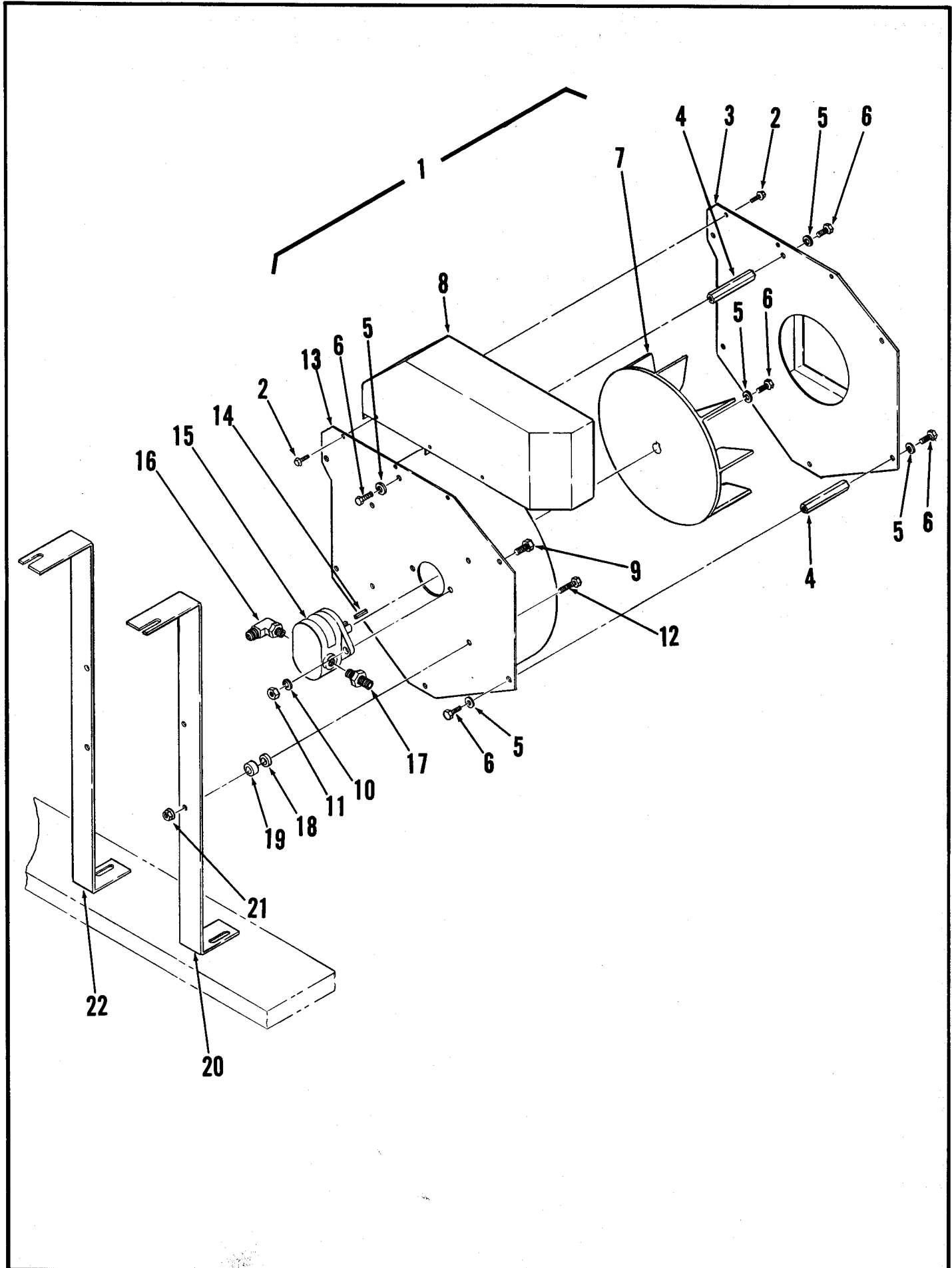
Item	Part No.	Qty	Description	Item	Part No.	Qty	Description
1	321406	8	Cotter Pin	29	491800	1	Decal, "Sweep"
2	487749	1	Linkage Bar	30	491802	1	Decal, "Transport"
3	487781	1	Linkage Bar	31		1	Roll Pin 5/16 x 1 1/2
4	478775	1	Retaining Ring	32	487805	1	Lever
5	487784	1	Lever	33	487826	2	Pillow Block
6		2	Screw, 5/16-24 x 1 1/2	34	491648	2	Flanged Bearing
7		2	Nut, 5/16-24	35		2	Set Screw, 5/16-18 x 5/16
8	457103	2	Arm	36	367095	2	Shaft Collar
9	491646	9	Flanged Bearing	37	487814	1	Shaft Lever
10	456847	10	Spring	38	487829	1	Lever
11	457176	2	Eye Bolt	39		1	Hex Nut, 5/16-18
12	487772	1	Pivot Bracket	40		3	Set Screw, 1/4-20 x 3/8
13		4	Screw, 1/4-20 x 3/4	41		1	Screw, 5/16-18 x 1 3/4
14		4	Nut, 1/4-20	42	491690	2	Sleeve Bushing
15	487769	3	Linkage Bar	43		1	Lock Washer, 3/8
16		2	Screw, 3/8-16 x 1 1/2	44		2	Screw, 3/8-16 x 1 3/4
17		5	Flanged Nut 3/8-16	45	487463	4	Thrust Washer
18		A/R	Washer, Flat 3/8	46	487835	1	Linkage Bar (diesel)
19	457586	1	Mat, Right		491951	1	Linkage Bar (gas & propane)
20	025486	2	Decal, Arrow	*	491636	2	Bushing
21	487751	1	Pedal, Right	47		1	Set Screw, 1/4-20 x 1
22	457585	1	Mat, Left	48	487838	1	Lever
23	487763	1	Pedal, Left	49	456937	1	Woodruff Key
24	487849	1	Pin	50		3	Flat Washer, 3/8
25	491816	1	Rod	51	491664	1	Shock Absorber
26	331076	1	Collar				
27	490697	1	Floor Plate				
28	491814	1	Lever				

* = Not Shown



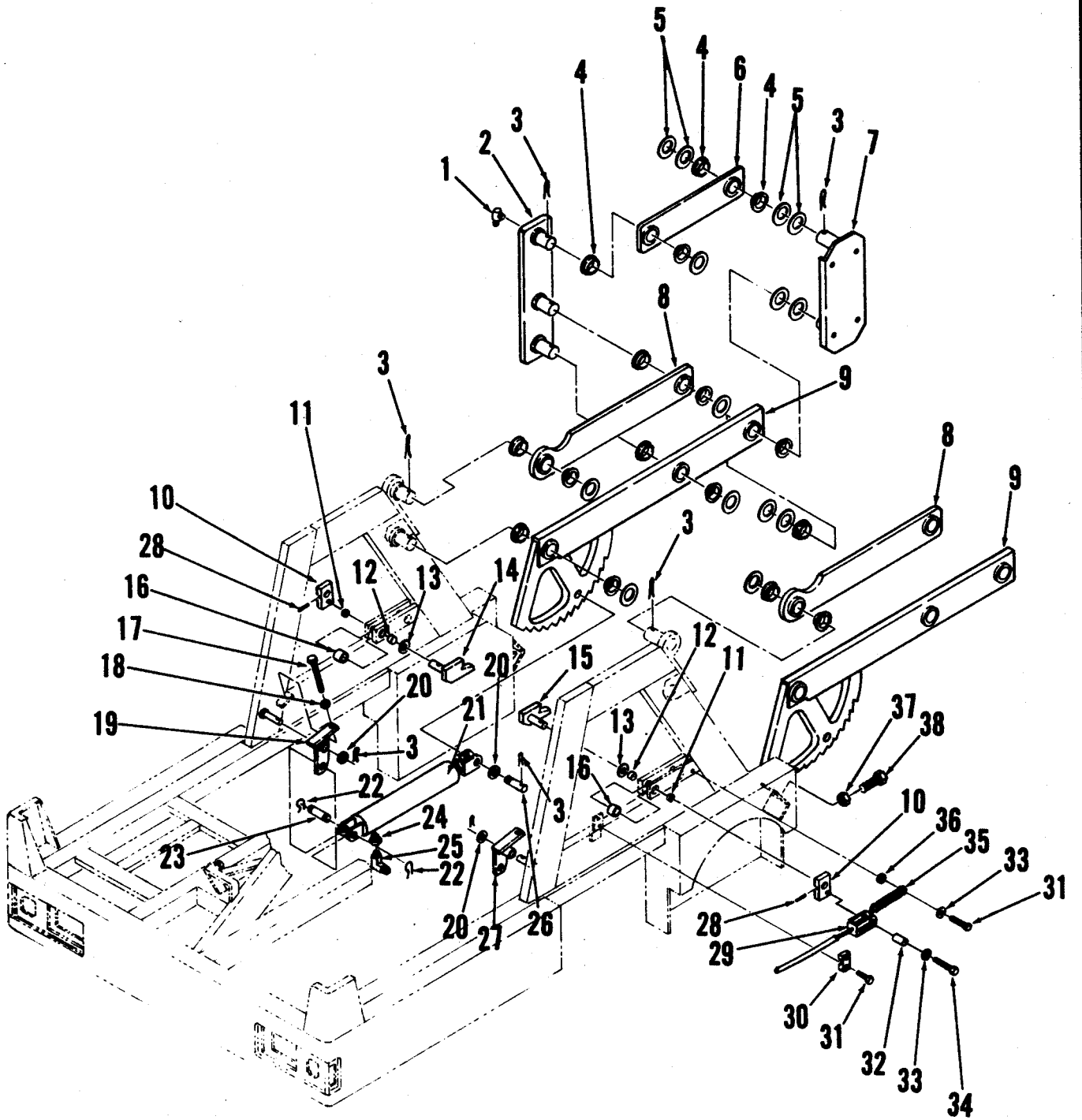
PARKING & FOOT BRAKES

#	PART NO.	Q	DESCRIPTION
1	486 563	2	BRAKE CABLE
2	488 276	1	BRACKET
3		4	SCREW 3/8-16 X 3/4
4	448 200	1	LEVER, HAND BRAKE
5	321 404	1	PIN
6		4	SCREW 1/4-20 X 7/8
7	488 285	1	CABLE CLAMP
8	488 261	1	BASE, PARKING BRAKE
9	477 828	1	CYLINDER, MASTER BRAKE
10		5	SCREW 3/8-16 X 1.0
11	025 122	1	DECAL
12		2	SCREW, FLAT HD. 1/4-20 X 7/8
13	365 081	1	PLATE, PEDAL
14	365 086	1	PAD, RUBBER
15	365 087	1	CUP, PEDAL
16	488 211	1	LEVER, FOOT BRAKE
17		1	SCREW 3/8-16 X 2.00
18		1	NUT 3/8-16
19	488 181	1	BRACKET
20		5	SCREW 5/16-18 X 1/2
21		5	SHAKEPROOF WASHER 5/16
22	180 200	5	WASHER .34 X 1.00 X .12
23	491 660	6	SLEEVE BEARING
24		1	SCREW #8-32 X 1.0
25		1	NUT #8-32
26	488 218	1	BAR, LINKAGE
27	321 427	2	RETAINING RING
28	477 902	1	PIN
29	477 909	1	ROD, CLEVIS
30	488 199	1	LEVER, BRAKE
31	358 500	1	SPRING
32		1	SCREW 1/4-20 X 2.00
33		2	NUT 1/4-20
34	366 862	1	BUSHING
35		1	SCREW, RD. HD. 1/4-20 X 1 1/4
36	491 656	2	SLEEVE BEARING
37	488 216	1	PLATE, STOP
38	488 220	1	FOOT BRAKE ASSY.



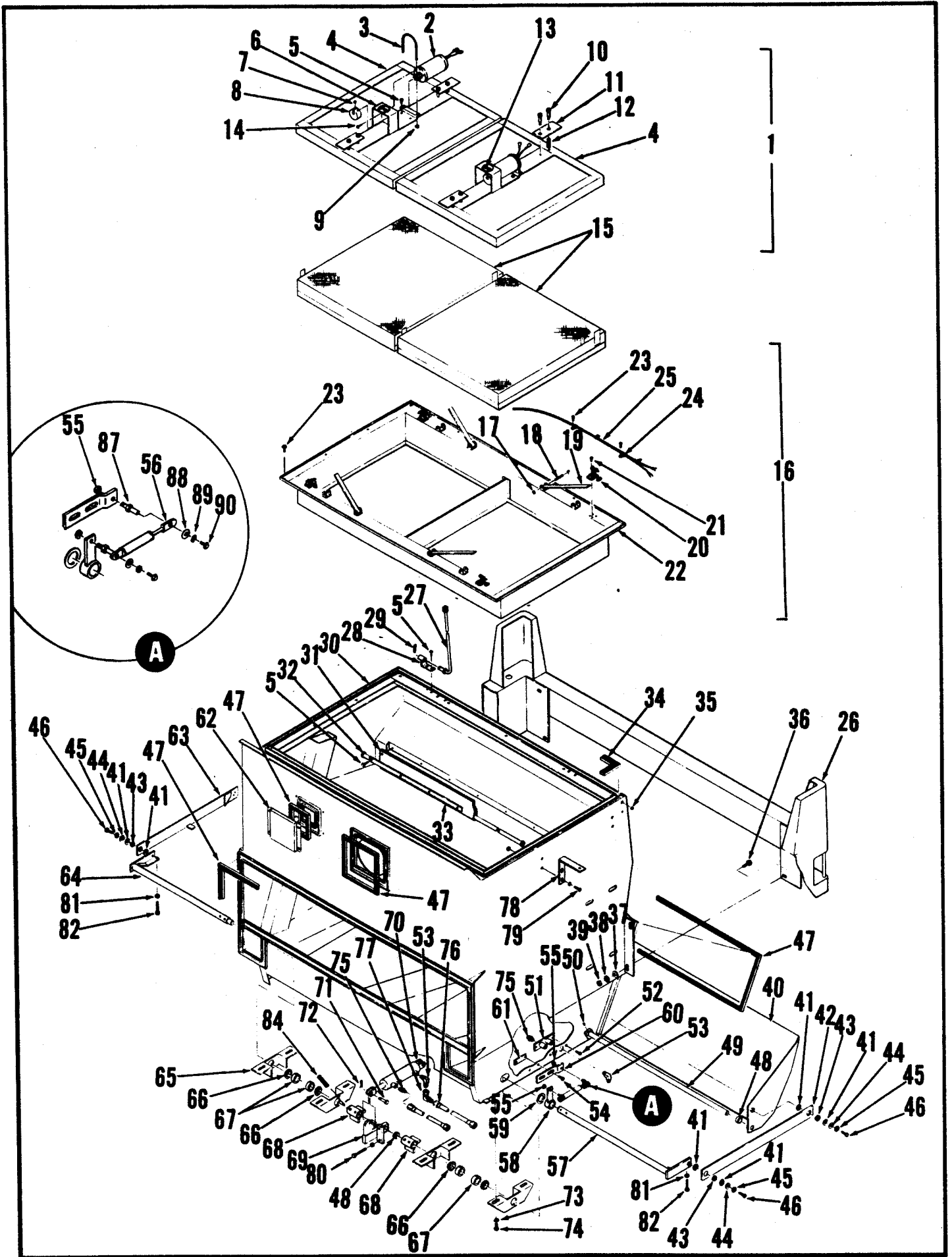
VACUUM FAN ASSEMBLY

#	PART NO.	Q	DESCRIPTION
1	489 704	1	VACUUM FAN ASSEMBLY
2		6	SCREW, WASHER HD. #10-24 X 1/2
3	491 766	1	HOUSING
4	489 743	6	SPACER
5		13	LOCK WASHER 1/4
6		13	SCREW 1/4-20 X 5/8
7	489 785	1	IMPELLER
8	491 776	1	DUCT
9		2	SCREW 3/8-16 X 7/8
10		2	LOCK WASHER 3/8
11		2	HEX NUT 3/8-16
12		4	SCREW 1/4-20 X 1 1/4
13	491 864	1	HOUSING
14		1	SQUARE KEY .19 X .19 X 1 1/8
15	488 572	1	MOTOR, VAC FAN
16	900 105	1	ELBOW 90° O/R-10
17	900 017	1	CONNECTOR O/R-10
18	489 764	4	BUMPER
19	489 767	4	SPACER
20	489 746	1	MOUNTING BRACKET RH
21		4	WHIZ NUT 1/4-20
22	489 749	1	MOUNTING BRACKET LH



HOPPER ARMS

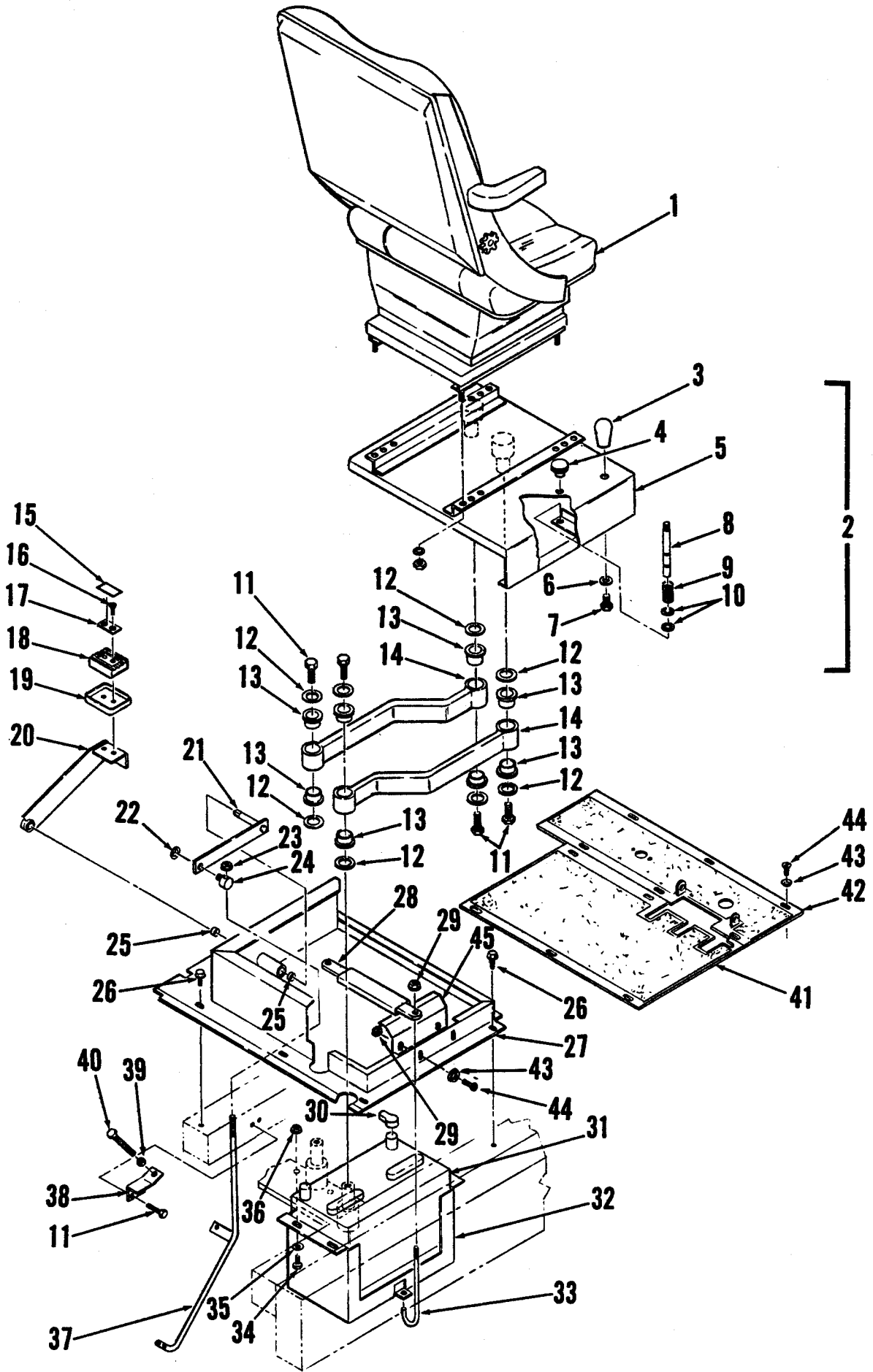
#	PART NO.	Q	DESCRIPTION
1	101 737	10	GREASE FITTING
2	490 035	2	HOPPER ARM
3		10	3/16 x 3 COTTER PIN
4	490 008	28	FLANGE BEARING
5	490 092	46	WASHER
6	490 044	2	TILT ARM
7	490 050	2	TILT ARM BRACKET
8	490 020	2	LINKAGE ARM
9	490 023	2	RATCHET ARM
10	490 063	2	LEVER
11	491 640	2	SLEEVE BEARING
12	491 638	2	SLEEVE BEARING
13		2	7/8 FLAT WASHER
14	490 059	1	RIGHT PAWL
15	490 062	1	LEFT PAWL
16	490 057	2	SPACER
17	479 513	2	ADJUSTING SCREW
18		2	1/2-13 NUT
19	491 071	1	CYLINDER BRACKET
20		4	1.0 FLAT WASHER
21	479 646	2	HYDRAULIC CYLINDER SEAL KIT 979703
22	477 583	4	COTTER PIN
23	477 581	2	PIN
24	488 577	4	REDUCER
25	488 580	4	ELBOW
26	490 086	2	PIN
27	490 074	1	CYLINDER BRACKET
28		2	1/4 x 1-1/2 ROLL PIN
29	477 829	2	CABLE ASSEMBLY
30	477 884	2	CABLE CLAMP
31		6	1/4-20 x 5/8 SCREW
32	487 547	2	BUSHING
33		4	1/4 FLAT WASHER
34		2	1/4-20 x 1-1/4 SCREW
35	370 355	2	SPRING
36		2	1/4-20 NUT
37		2	5/8-11 NUT
38	490 095	2	ADJUSTING SCREW



HOPPER ASSEMBLY

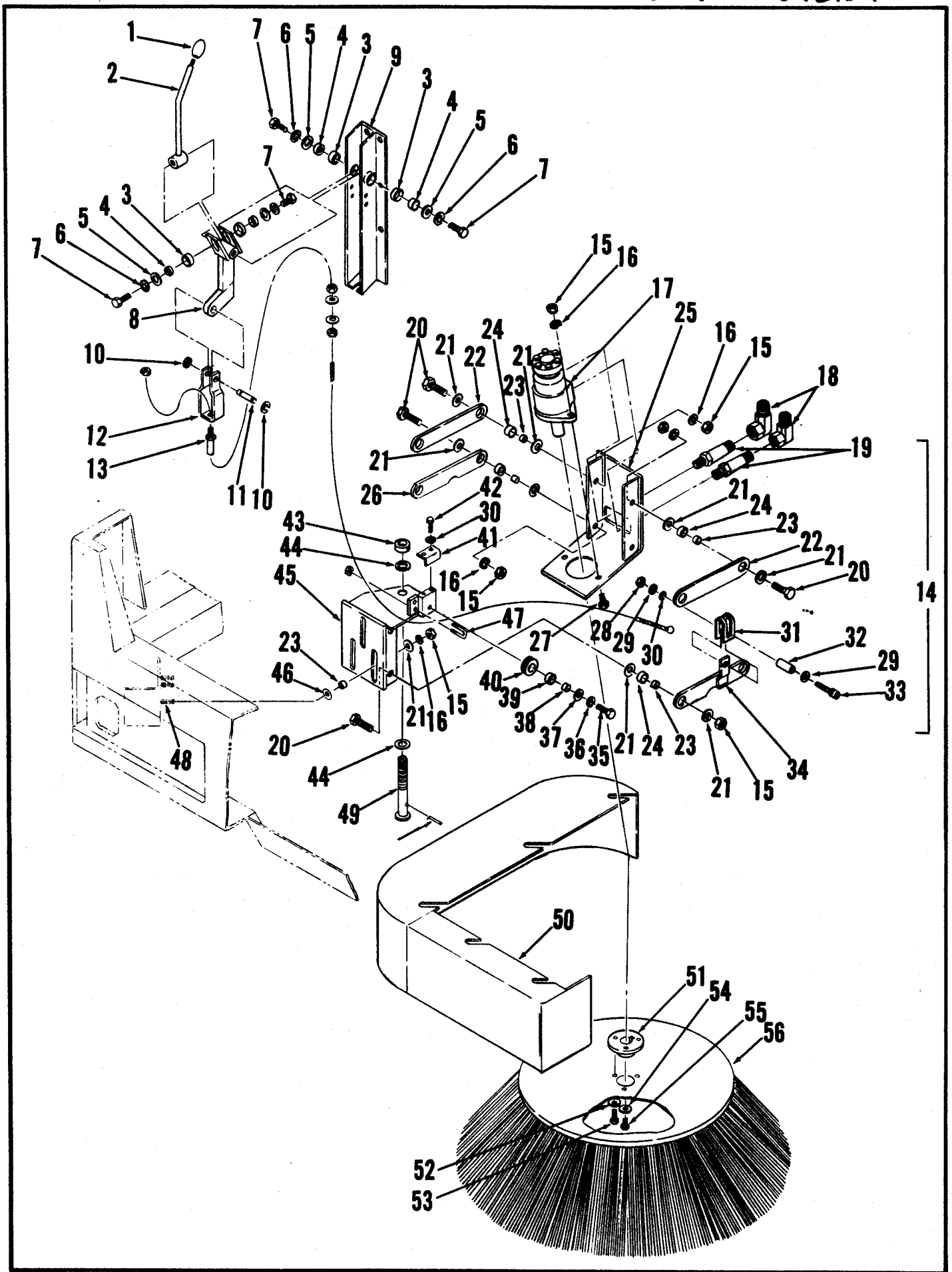
Item	Part No.	Qty	Description	Item	Part No.	Qty	Description
1	489108	2	Hold Down Assembly	48	441406	3	Sleeve Bearing .753
2	491820	2	Motor	49	490264	1	Shaft
*	491823	2	Carbon Brush Kit (for 491820)	50		2	Set Screw 1/4-20 x 3/8
3	468329	2	U-Bolt	51	490270	1	Coupling
4	491830	2	Base, Hold Down	52		1	Screw 1/4-20 x 1.2 HP-5
5		18	Screw, 1/4-20 x 1/2	53	488580	3	Elbow, Male
		12	Washer, Shakeproof 1/4	54		2	Screw 5/16-18 x 1.00
6	468331	2	Motor Mount			2	Lock Washer 5/16
7		4	Set Screw #10-24 x 1/4	55		2	Whiz Nut 5/16-18
8	491822	2	Eccentric	56	490365	1	Dampener
9	469021	4	Hex Nut	57	490297	1	Lever, Left
10	491872	8	Bolt 5/16-18 x 1 1/4	58	490327	1	Lever
11	489109	4	Bracket	59	101281	1	Washer
12	171177	4	Spring	60	490260	1	Bracket
13	030080	2	Decal, Hands Off	61	490262	1	Nut Plate
14		6	Screw #10-32 x 1/2	62	489162	1	Cover
15	491781	2	Filter Panel	63	490318	1	Linkage, R.H
16	489100	1	Filter Box Assembly	64	490300	1	Lever, Right
17	321125	8	Retaining Ring 1/4 e	65	490292	4	Bracket
18	491826	4	Pin	66	444944	4	Flange Bearing
19	491848	4	Lever	67	444820	4	Collar
20	491860	4	Clamp, Hold Down	68	490336	2	Collar
21		16	Hex Washer #8-32 x 3/8	69	490342	1	Bracket
22	489101	1	Filter Box	70	488542	1	Cylinder
23		18	Screw #10-24 x 1/2 HP-5	71	486733	2	Pin
24	300152	3	Clamp, Cable	72		2	Cotter Pin 1/8 x 1.00
25	491876	1	Wiring Harness	73	367214	16	Washer
26	490133	1	Bumper, Rear	74		8	Screw 1/2-13 x 1.00
27	491127	1	Prop Rod	75	900598	3	Connector
28	491121	1	Bracket, Prop Rod	76	488749	2	Hose Assembly
29		1	Cotter Pin, 1/16 x 1.00	77	900301	1	Elbow, Female
30	489136	1	Hopper	78	490398	1	Bracket
31	491783	1	Blade			8	Screw 1/4-20 x 3/4
32	489160	1	Rod			8	Lock Washer 1/4
33	489161	1	Strap	79		8	Hex Nut 5/16-18
34	490112	11	Gasket .50 x .50	80	479513	4	Adjusting Screw
35	321958	1	Grommet	81		2	Hex Nut 5/16-18
36		4	Hex Screw 1/2-13 x 1.0	82		2	Hex Screw 5/16-18 x 2.5
37		4	Flat Washer 1/2	83	490274	8	Set Screw (not shown)
38		4	Lock Washer 1/2	84		4	Spring Pin 5/16 x 1/5
39		8	Hex Nut 1/2	85	300314	1	Gasket not shown 13 Feet
40	490360	1	Door	86	478246	3	Cable Tie (not shown)
41	159530	8	Thrust Washer	87	490367	2	Stud
42	490315	1	Linkage	88	180092	2	Washer
43	490376	4	Sleeve Bearing	89		2	#10 Shakeproof. Washer
44	180200	4	Washer .34 x 1.0 x .06	90		2	10-24 x 3/8 Screw
45		4	Shakeproof Washer 5/16				
46		4	Screw 5/16-18 x 3/4				
47	490110	6	Gasket .75 x 1.00				

* = Not Shown



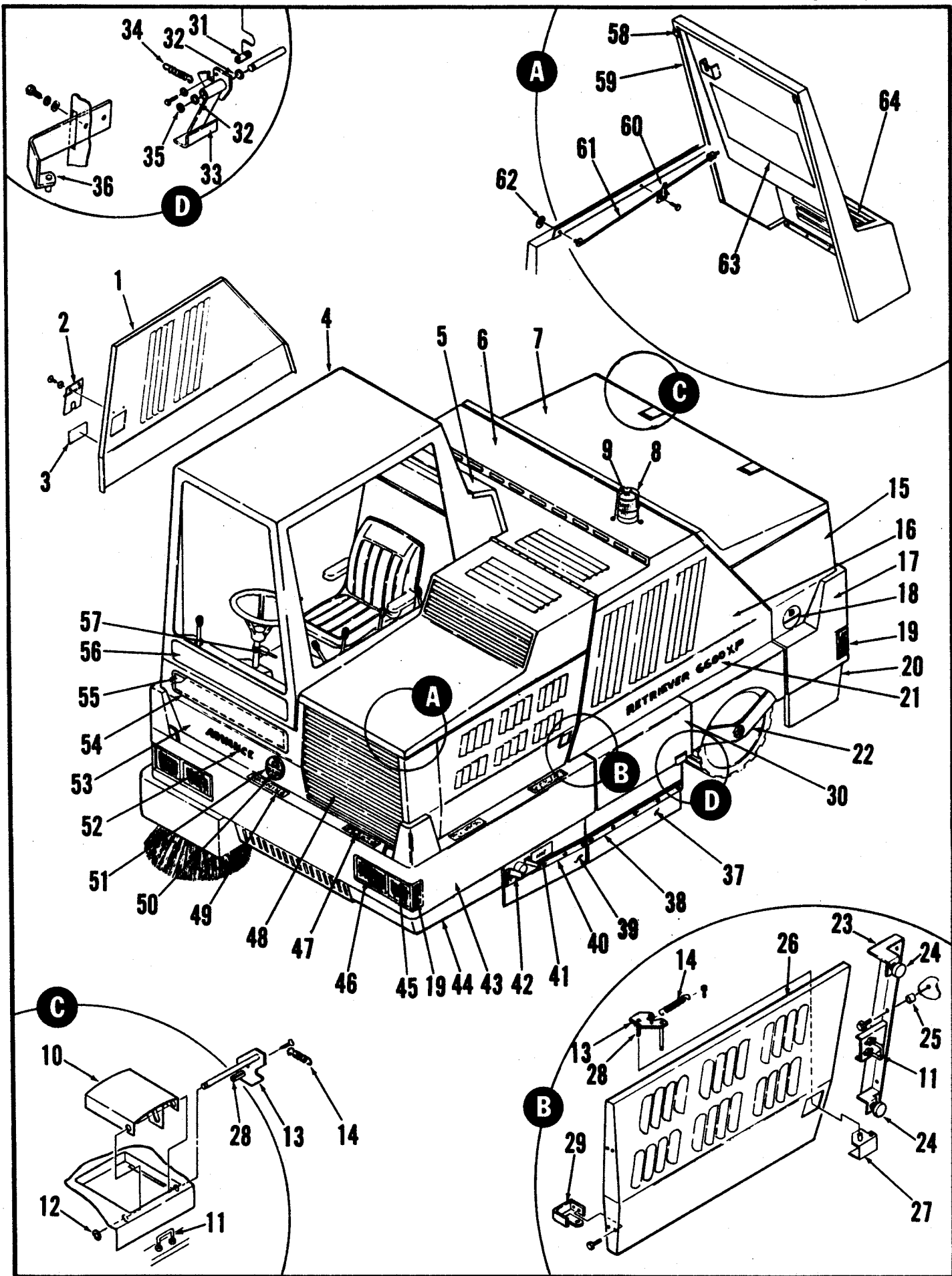
SEAT ASSEMBLY

#	PART NO.	Q	DESCRIPTION
1	490 461	1	SEAT
2	491 630	1	SEAT BRACKET ASSEMBLY
3	364 527	1	KNOB
4	386 222	1	KNOB
5	490 481	1	UPPER SEAT FRAME
6		1	SHAKEPROOF WASHER, 5/16
7		1	SCREW, 5/16 - 18 x 5/8 HEX
8	491 632	1	LATCH PIN
9	200 980	1	SPRING
10	468 834	2	RETAINING RING
11		6	SCREW, 1/4 - 20 x 3/4
12	159 387	8	WASHER
13	444 944	8	FLANGED BEARING
14	490 511	2	PIVOT ARM
15	025 126	1	DECAL, "LIFT FLAP"
16		2	SCREW, 1/4 - 20 x 1 HP - 5
17	365 081	1	PLATE
18	365 082	1	RUBBER PAD
19	365 083	1	PEDAL CUP
20	491 616	1	PEDAL LEVER
21	491 732	1	PIVOT LEVER
22	321 427	1	RETAINING RING, 3/8
23		1	WHIZ NUT, 3/8 - 16
24	491 716	1	SWIVEL
25	491 656	2	BEARING
26		6	SCREW, 10 - 24 x 1/2
27	490 464	1	LOWER SEAT BRACKET
28	487 421	2	CLAMP BAR
29		4	WHIZ NUT, 10 - 24
30	372 673	2	BATTERY POST BOOT
31	491 902	1	BATTERY
32	487 391	1	BATTERY TRAY
33	487 418	2	ROD, CLAMP
34		4	SCREW, 1/4 - 20 x 1 1/4
35		4	FLAT WASHER, 1/4
36		4	WHIZ NUT, 1/4 - 20
37	491 706	1	ROD
38	491 718	1	STOP PLATE
39		1	WHIZ NUT, 5/16 - 18
40		1	SCREW, 5/16 - 18 x 1 1/2
41	490 694	1	FLOOR PLATE
42	490 697	1	FLOOR PLATE
43		12	FINISHING WASHER, 10
44		12	SCREW, 10 - 24 x 1/2
45	491 624	1	SEAT LATCH



SIDE BROOM ASSEMBLY

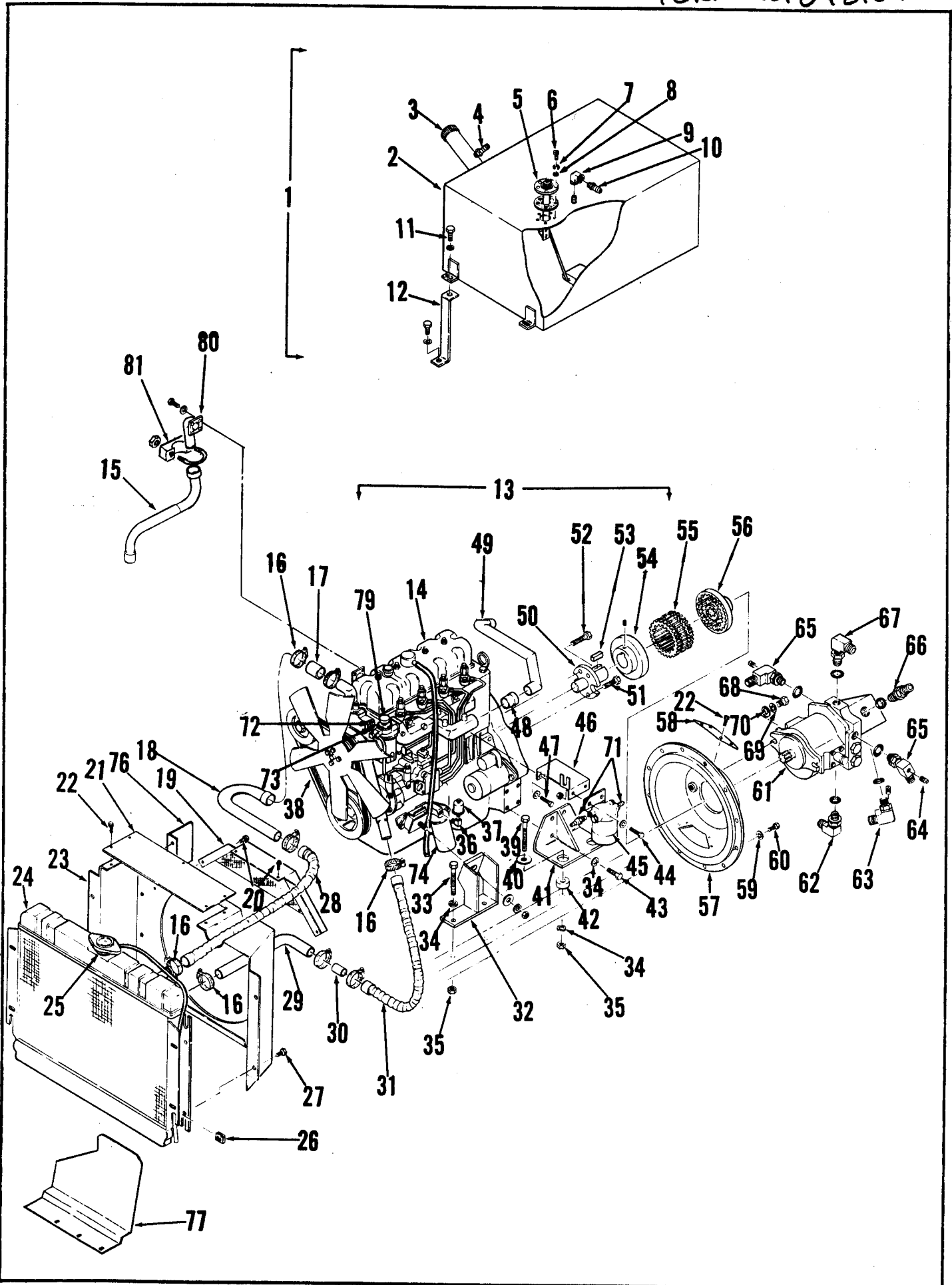
#	PART NO	Q	DESCRIPTION
1	364 527	1	KNOB
2	488 116	1	HANDLE
3	491 660	4	BEARING, SLEEVE
4	244 941	4	BUSHING
5		4	FLAT WASHER 5/16
6		4	WASHER, SHAKEPROOF 5/16
7		4	SCREW HEX HD. 5/16-18x3/4
8	488 122	1	LINKAGE
9	488 143	1	LINKAGE BRACKET
10	321 427	2	RETAINING RING
11	477 902	1	PIN
12	488 157	1	YOKE
13	487 456	1	PULL CABLE
14	487 520	1	SIDE BROOM MOTOR ASSY
15		10	HEX NUT, 1/2-13
16		10	LOCKWASHER, 1/2
17	487 615	1	MOTOR
18	900 305	2	ELBOW
19	487 618	2	CONNECTOR, MALE
20		6	SCREW, HEX HD 1/2-13x3/2
21	367 214	16	WASHER
22	487 609	2	LINK ARM
23	360 627	8	BUSHING
24	491 656	8	BEARING, SLEEVE
25	487 613	1	MOTOR BRACKET
26	487 514	1	LINK ARM
27		2	SCREW, HEX HD. 1/2-13x5/4
28		1	HEX NUT 1/4-20
29		2	FLAT WASHER 1/4
30		3	WASHER SHAKEPROOF 1/4
31	487 556	1	CLEVIS
32	487 547	1	BUSHING
33		1	SCREW, SOC HD. 1/4-20x5/4
34	487 541	1	LINK ARM,
35		1	CAP SCREW 7/16-14x1
36		1	WASHER, SHAKEPROOF 7/16
37		1	WASHER, FLAT 7/16
38	159 794	1	BUSHING
39	491 654	1	BEARING, SLEEVE
40	487 553	1	PULLEY
41	487 550	1	RETAINER
42		2	CAP SCREW 1/4-20x1/2
43	487 535	1	RETAINER, UPPER
44	487 460	2	WASHER, THRUST
45	487 501	1	BRACKET, R.H.
46	487 463	3	WASHER, THRUST
47	487 448	1	U-BOLT
48	487 523	3	STUD
49	487 526	1	ROD, ADJUSTING
50	487 566	1	BUMPER, R.H.
51	479 948	1	HUB
52		3	LOCKWASHER, 5/16
53		3	CAP SCREW 5/16-18x5/4
54		1	LOCKWASHER 1/4
55		1	CAP SCREW 1/4-20x5/8
56	487 453	1	BROOM, SIDE



OUTER BODY

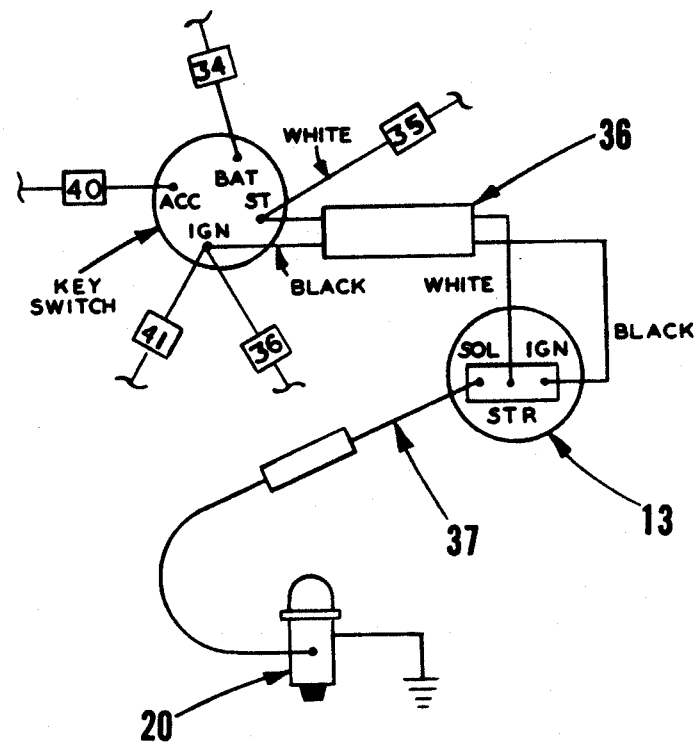
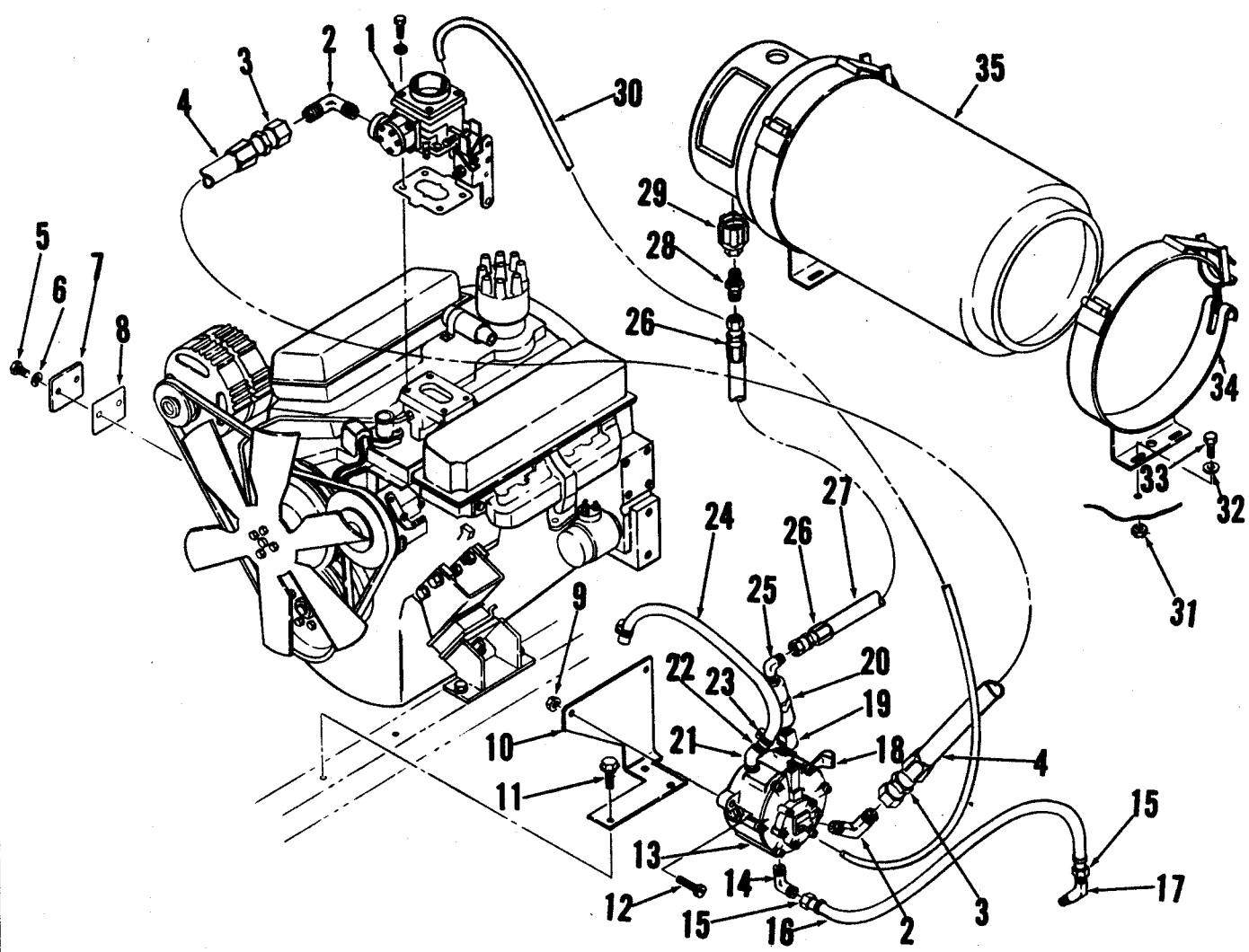
Item	Part No.	Qty	Description	Item	Part No.	Qty	Description
1	490890	1	Right Panel	32	491658	4	Sleeve Bearing
2	490905	1	Cover	33	491028	1	Left Latch
3	026050	1	Gas Decal	*	491025	1	Right Latch
4	491229	1	Overhead Guard	34	112054	2	Spring
5	491314	1	Cover	35	321427	2	Retaining Ring
6	490851	1	Cover	36	491904	2	Left Hinge
7	491085	1	Hopper Cover	*	491906	2	Right Hinge
8	496061	1	Light Guard TSB 603, G-6	37	491666	2	Skirt
9	489639	1	Rotating Light TSB 603, G-6	38	491676	2	Strap
10	491152	1	Right Handle	39	491668	2	Skirt
*	491155	1	Left Handle	40	491678	2	Strap
11	491158	3	Latch Keeper	41	030072	4	"Hot" Decal
12	321125	2	Retaining Ring	42	491736	1	Deflector
13	491140	2	Right Pawl	43	486051	1	Chassis
*	491143	1	Left Pawl	44	487578	1	Guard
14	330178	3	Spring	45	489541	2	Amber Lens
15	491079	1	Left Panel	*	489544	2	Rear Red Lens
*	491076	1	Right Panel	46	481560	2	Head Lamp Assembly
16	490866	1	Left Panel	47	477582	6	Floor Mat
17	490133	1	Rear Bumper	48	490771	1	Front Grill
18	015076	2	Advance Decal	49	026026	1	Warning Decal
19	454523	4	Light Socket	50	026051	2	"6600xP" Decal
*	454519	4	Light Bulb	51	024958	2	Advance Decal
*	489547	4	Amber Lens	52	016543	2	Advance Decal
20	491073	1	Left Bumper Panel	53	490734	1	Front Panel
*	491070	1	Right Bumper Panel	54	490690	1	Cover Assembly
21	026048	2	Retriever Decal	55	026037	1	Decal Hydraulic Diagram
*	026059	2	"D" Decal (Diesel)	56	491305	1	Cover
22	486597	2	Wheel Support	57	489631	1	Turn Signal
23	490988	1	Bracket	58	386312	2	Bumper
24	386312	2	Bumper	59	490932	1	Engine Hood
25	475411	3	Bushing	60	490647	1	Hood Prop Bracket
26	490972	1	Engine Door	61	490641	1	Hood Prop Rod
27	490985	1	Handle	62	166839	1	Washer
28		3	1/4 x 3/4 Roll Pin	63	026034	1	Gas Wiring Diagram
29	490978	2	Door Hinge		026036	1	Diesel Wiring Diagram
30	490003	1	Left Door	64	490950	1	Engine Hood Grill
*	491000	1	Right Door				
31	491062	2	Pin				

* = Not Shown



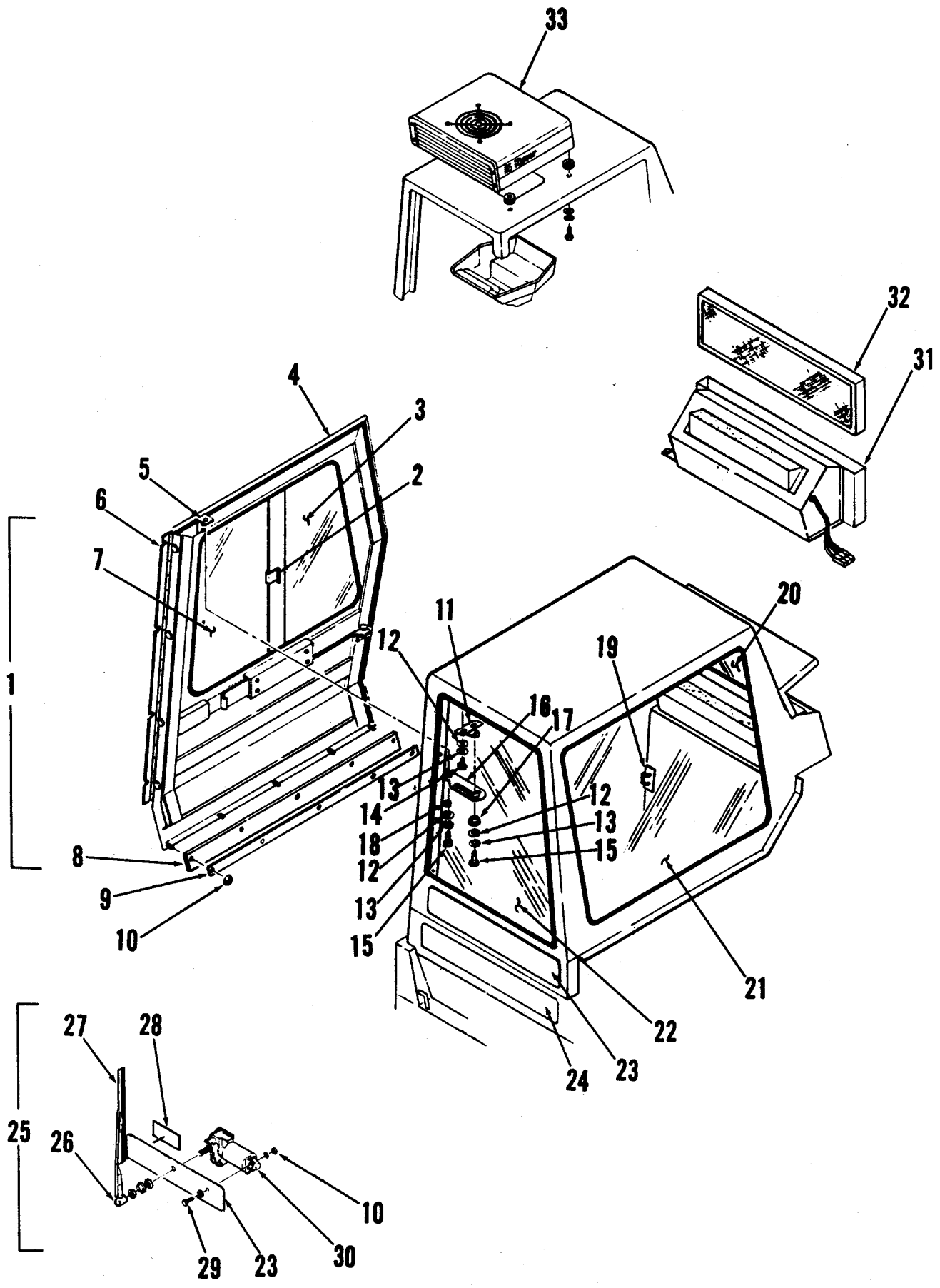
DIESEL ENGINE

#	PART NO	Q	DESCRIPTION	#	PART NO	Q	DESCRIPTION
1	488 902	1	FUEL TANK ASSEMBLY	65	488 710	2	ELBOW
2	488 904	1	FUEL TANK	66	900 009	1	ST. THD. CONNECTOR
3	478 502	1	FUEL TANK CAP	67	488 636	1	ELBOW
4	369 594	1	BARB	68		2	1/2-13 x 1-1/2 BOLT
5	478 358	1	FUEL GAUGE SENDER	69		2	1/2 SHAKEPROOF WASHER
6		5	10-32 x 7/16 SCREW	70	487 252	2	WASHER
7		5	10 LOCK WASHER	71	488 934	2	FUEL FITTING
8		5	10 FLAT WASHER	72	487 376	1	PLUG
9	111 295	1	ELBOW	73	481 888	1	TEMPERATURE SENDER
10	477 523	1	BARB	74	487 181	1	OIL FILTER
11		4	5/16-18 x 1.0 SCREW	75	744 580	1	PIPE PLUG
		4	5/16 FLAT WASHER	76	491 886	1	AIR DEFLECTOR
		4	5/16-18 WHIZ NUT	77	491 794	1	AIR DEFLECTOR
12	488 928	1	FUEL TANK BRACKET	78	756 364	2	HOSE CLAMP
13	487 162	1	ENGINE ASSEMBLY	79	487 178	1	FUEL FILTER
14	487 164	1	ENGINE 154 PERKINS	80	487 291	1	EXHAUST PIPE
15	487 290	1	EXHAUST PIPE	81	487 272	1	MUFFLER CLAMP
16	440 213		HOSE CLAMP				
17	487 382	1	ADAPTOR				
18	487 387	1	TUBE				
19	487 358	1	GUARD				
20		4	8-32 x 3/8 SCREW				
21	487 371	1	FAN SHROUD PLATE				
22		13	10-24 x 1/2 SCREW				
23	487 362	1	FAN SHROUD				
24	487 351	1	RADIATOR				
25	478 693	1	RADIATOR CAP				
26	487 374	4	U-NUT				
27		4	5/16-18 x 1/2 SCREW				
28	487 381	1	RADIATOR HOSE				
29	487 383	1	RADIATOR HOSE				
30	487 385	1	ADAPTOR				
31	487 354	1	RADIATOR HOSE				
32	487 192	2	ENGINE MOUNT				
33		4	1/2-13 x 4 BOLT				
34		16	1/2 LOCK WASHER				
35		8	1/2-13 NUT				
36	111 309	1	ELBOW				
37	478 698	1	OIL PRESSURE SENDER				
38	487 166	1	FAN BELT				
39		4	1/2-13 x 5 BOLT				
40	480 742	4	WASHER				
41	487 207	2	REAR ENGINE MOUNT				
42	478 685	4	RUBBER MOUNT				
43		4	1/2-13 x 1/2 BOLT				
44		2	5/16-18 x 3/4 SCREW				
45	487 193	1	FUEL/WATER TRAP				
46	487 232	1	FUEL FILTER BRACKET				
47		2	5/16-24 x 3/4 SCREW				
48	487 333	1	REDUCER				
49	487 339	1	PIPE WELDMENT				
50	487 177	1	DRIVE ADAPTOR				
51		2	1/2-20 x 1-1/4 BOLT				
52	487 174	4	1/2-20 x 2.0 BOLT				
53	744 469	1	SQ. KEY				
54	487 182	1	COUPLING				
55	487 185	1	SLEEVE				
56	487 179	1	COUPLING				
57	487 188	1	BELL HOUSING				
58	487 189	2	BELL HOUSING COVER				
59		12	3/8 SHAKEPROOF WASHER				
60		12	3/8-16 x 3/4 SCREW				
61	488 521	1	HYDRO-TRANS PUMP				
62	900 105	1	ELBOW				
63	488 713	1	ELBOW				
64	481 546	3	PLUG				



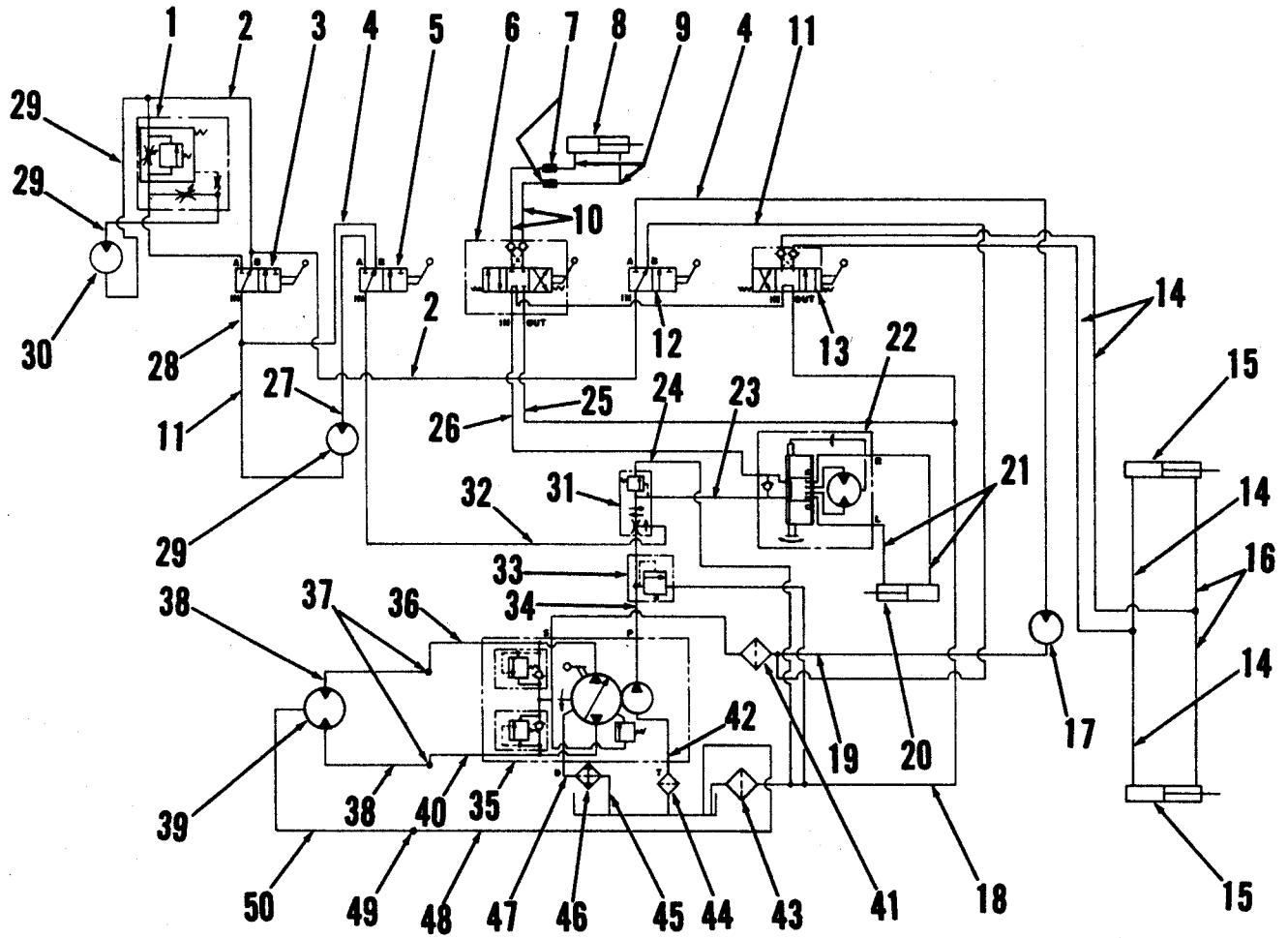
LPG SYSTEM

#	PART NO.	Q	DESCRIPTION
1	487 412	1	CARBURETOR & GASKET
2	487 395	2	ELBOW
3	487 402	2	SWIVEL
4	487 395	1	HOSE ASSEMBLY
5		2	3/8-16 x 5/8 SCREW
6		2	3/8 SHAKEPROOF WASHER
7	487 429	1	FUEL PUMP COVER
8	487 428	1	FUEL PUMP GASKET
9		2	1/4-20 WHIZ NUT
10	487 410	1	MOUNTING BRACKET
11		2	1/4-20 x 1/2 SCREW
12		2	1/4-20 x 1-1/4 SCREW
13	487 414	1	VAPORIZER REGULATOR
14	456 606	1	ELBOW
15	456 616	2	SWIVEL
16	487 406	1	HOSE
17	487 408	1	ELBOW
18	300 152	1	"P" CLAMP
19	368 938	1	STREET ELBOW
20	487 404	1	FILTER LOCK
	487 405	1	ELEMENT & GASKET KIT
21	756 743	1	ELBOW
22	487 425	1	HOSE BARB
23	112 771	1	HOSE CLAMP
24	487 398	1	HOSE
25	456 608	1	ELBOW
26	456 614	2	SWIVEL
27	487 400	1	HOSE
28	456 600	1	MALE ADAPTOR
29	369 675	1	FEMALE COUPLER
30	487 416	1	HOSE
31		4	3/8-16 NUT
32		4	3/8 FLAT WASHER
33		4	3/8-16 x 3/4 SCREW
34	481 912	1	TANK MOUNTING BRACKET
35	456 590	1	TANK (OPTIONAL)
36	489 616	1	CORD ASSEMBLY
37	489 618	1	WIRE ASSEMBLY
38	478 246	8	WIRE TIE



CAB, WINDSHIELD WIPER, & AIR CONDITIONER

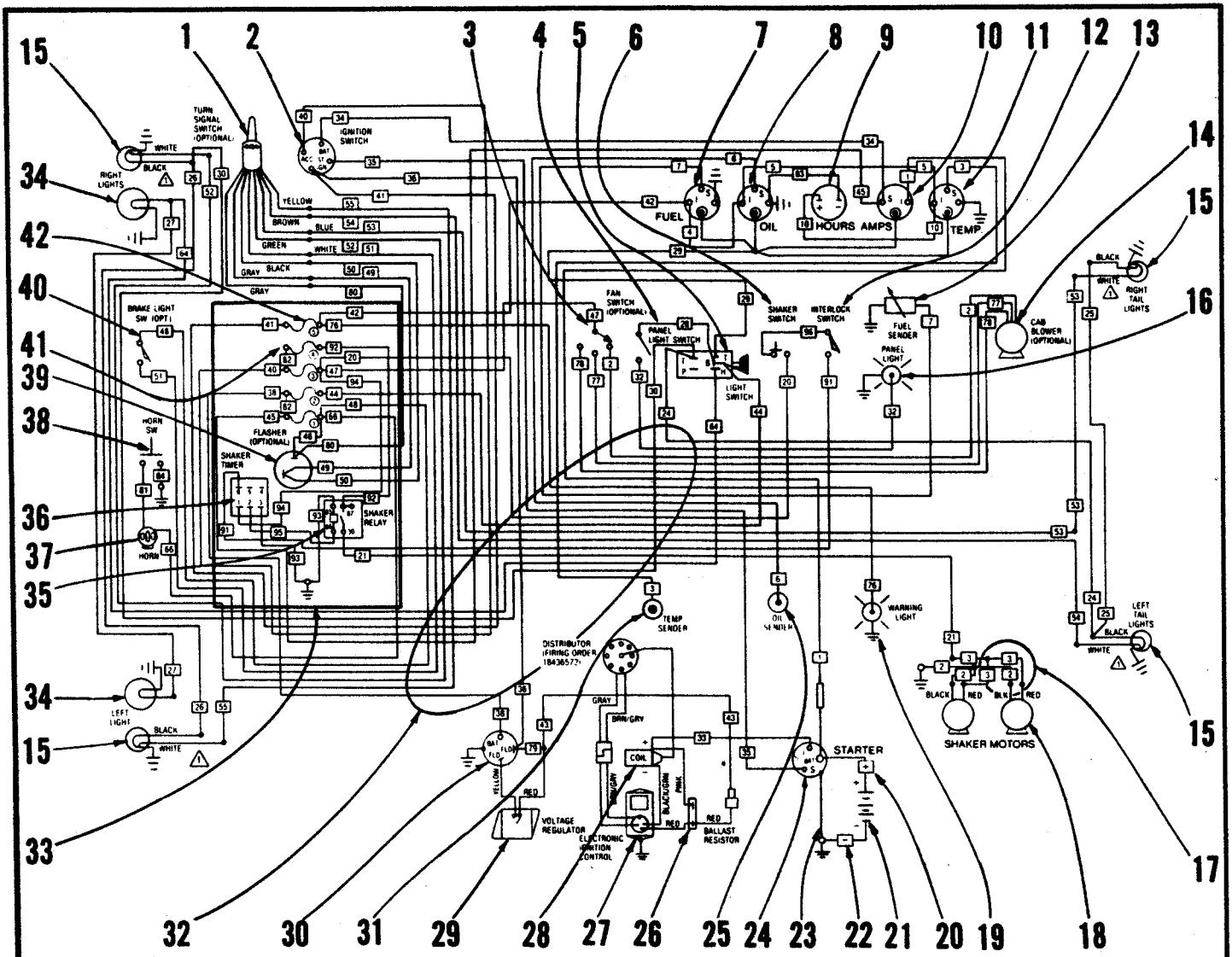
#	PART NO.	Q	DESCRIPTION
1	491 350	1	CAB DOOR ASSY.
2	481 746	1	HANDLE
3	491 394	1	WINDOW
4	491 352	1	DOOR
5	491 406	1	BRACKET
6	491 380	1	HINGE
7	491 396	1	WINDOW
8	491 390	1	STRIP
9	491 388	1	STRAP
10		6	10-24 WHIZ NUT
11	491 468	1	LATCH
12		9	1/4 FLAT WASHER
13		9	1/4 SHPRF WASHER
14		6	1/4-20 x 1/2
15		6	1/4-20 X 3/4 SCREW
16	481 878	1	LATCH
17	384 708	1	STEP BUSHING
18	206 784	1	BUSHING
19	491 462	1	CATCH
20	491 460	1	REAR WINDOW
21	491 458	1	SIDE WINDOW
22	491 456	1	FRONT WINDOW
23	491 305	1	COVER
24	490 690	1	COVER
25	486 140	1	WINDSHIELD WIPER KIT
26	486 131	1	WIPER ARM
27	486 130	1	WIPER ARM
28	486 127	1	WIRING DIAGRAM
29		1	10-24 x 3/8 SCREW
30	486 128	1	WIPER MOTOR
31	491 418	1	BLOWER ASSEMBLY
32	481 838	1	FILTER
33	486 100	1	AIR CONDITIONER KIT



HYDRAULIC DIAGRAM

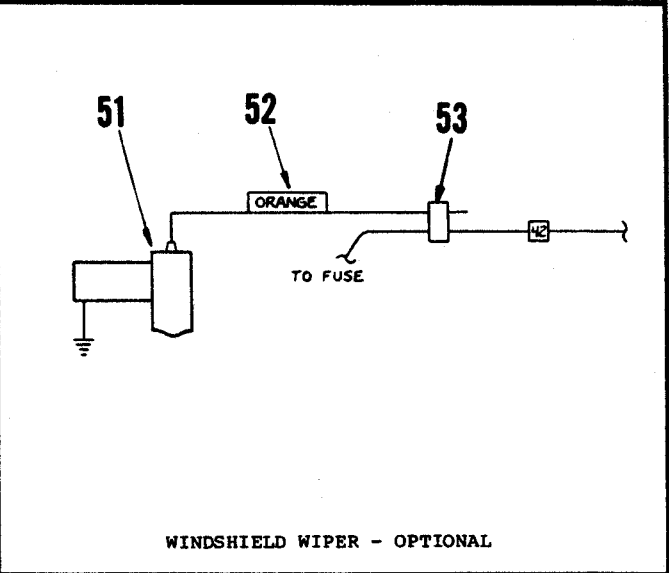
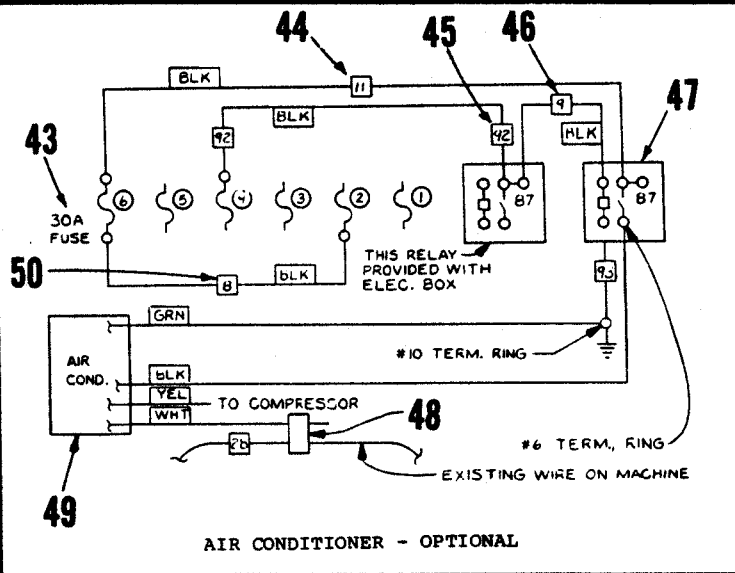
#	PART NO.	Q	DESCRIPTION
1	488 546	1	FLOW CONTROL VALVE ASSY.
2	488 755	2	HOSE ASSEMBLY
3	488 556	1	SIDE BROOM VALVE ASSY.
4	488 759	3	HOSE ASSY.
5	488 552	1	MAIN BROOM VALVE ASSY.
	488 515		O-RING KIT FOR ABOVE
6	488 548	1	HOPPER DOOR VALVE ASSY.
	488 517		SEAL KIT FOR ABOVE
7	488 591	2	SWIVEL
8	488 542	1	HOPPER DOOR CYLINDER
	449 755		SEAL KIT FOR ABOVE
9	488 749	2	HOSE ASSY.
10	488 747	2	HOSE ASSY.
11	488 765	2	HOSE ASSY.
12	488 554	1	VAC FAN VALVE
13	488 550	1	HOPPER LIFT VALVE ASSY
	488 517		SEAL KIT FOR ABOVE
14	488 743	4	HOSE ASSY.
15	479 646	2	HOPPER LIFT CYLINDER (GREEN)
	479 703		SEAL KIT FOR ABOVE
16	488 745	2	HOSE ASSY.
17	488 572	1	VAC FAN MOTOR
	488 859		SEAL KIT FOR ABOVE
18	488 735	1	HOSE ASSY.
19	488 763	1	HOSE ASSY.
20	488 722	1	STEERING CYLINDER
	488 724		SEAL KIT FOR ABOVE
21	488 741	2	HOSE ASSEMBLY
22	488 558	1	STEERING CONTROL ASSY.
23	488 733	1	HOSE ASSY.
24	488 739	1	HOSE ASSY.
25	488 731	1	HOSE ASSY.
26	488 737	1	HOSE ASSY.
27	488 769	1	HOSE ASSY.
28	488 757	1	HOSE ASSY.
29	488 527	1	MAIN BROOM MOTOR
30	487 615	1	SIDE BROOM MOTOR
	479 575		SEAL KIT FOR ABOVE
31	488 544	1	PRIORITY VALVE
32	488 751	1	HOSE ASSY.
33	488 566	1	RELIEF VALVE
	488 525		SEAL KIT FOR ABOVE
34	488 767	1	HOSE ASSY.
35	488 521	1	HYDROSTATIC TRANSMISSION
36	489 009	1	HOSE
37	900 406	2	ELBOW
38	489 004	2	HOSE
39	488 539	1	WHEEL MOTOR
	488 840		SHAFT SEAL KIT FOR ABOVE
	488 839		MOTOR SEAL KIT FOR ABOVE
40	489 010	1	HOSE
41	488 560	1	FILTER ASSY. (ON MACHINE FRAME)
	496 209		REPLACEMENT FILTER ELEMENT FOR ABOVE
42	488 777	1	HOSE ASSY.
43	488 564	1	FILTER ASSY. (ON HYD. OIL TANK)
	456 985		REPLACEMENT FILTER ELEMENT FOR ABOVE
44	488 538	1	RESERVOIR SUCTION STRAINER
45	488 481	1	HOSE ASSY.
46	487 380	1	OIL COOLER
47	488 480	1	HOSE ASSY.
48	488 748	1	HOSE ASSY.
49	900 401	1	ELBOW
50	488 750	1	HOSE ASSY.

TSB 449, G-8



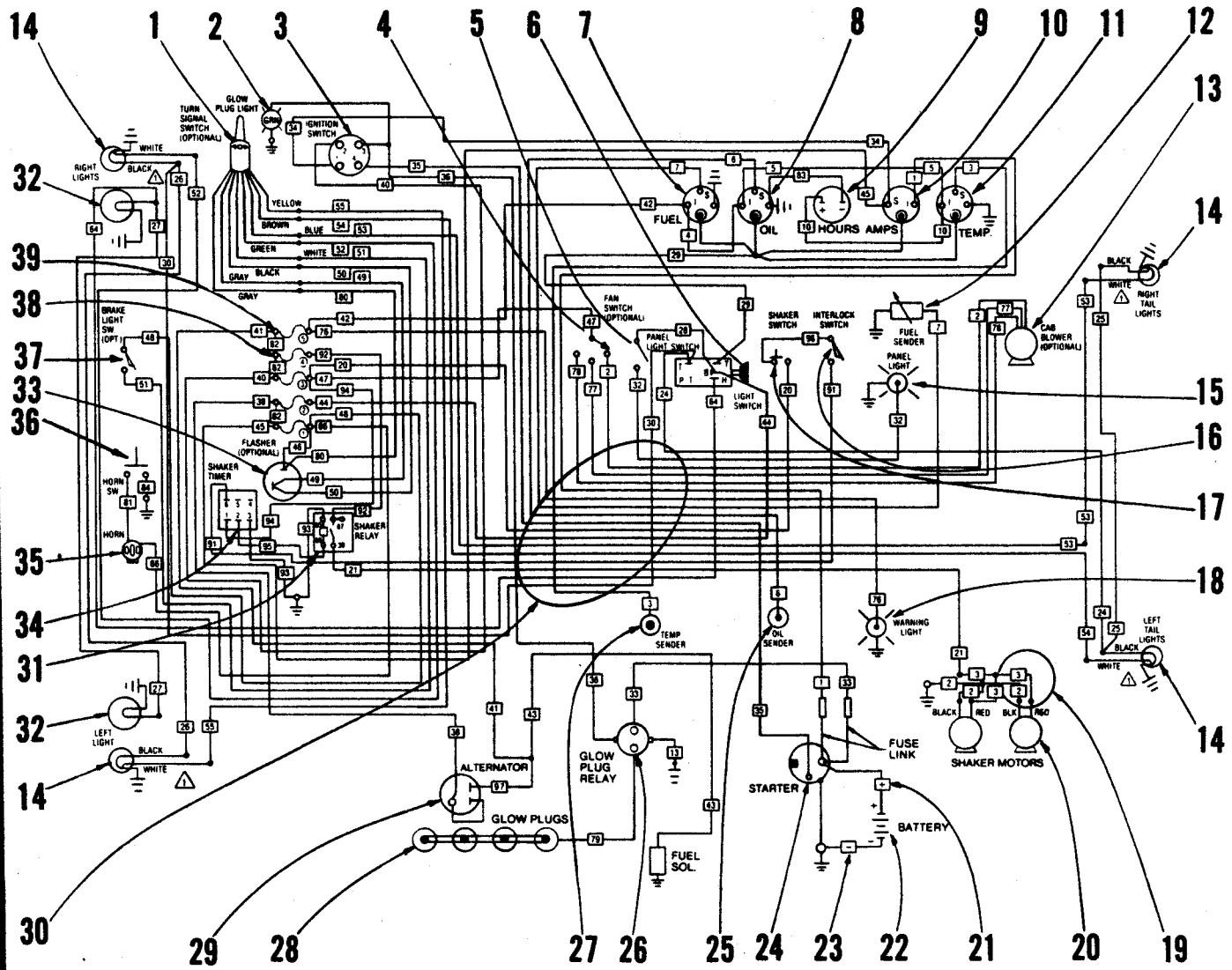
- FUSE IDENTIFICATION**
- 1. HORN, SIGNAL LIGHTS
 - 2. HEAD, TAIL, PARKING AND ALTERNATOR GAUGE LIGHTS
 - 3. CAB BLOWER, SHAKER TIMER AND RELAY
 - 4. FILTER SHAKER
 - 5. GAUGES, WARNING LIGHT

⚠ WHEN TURN SIGNAL OPTION IS NOT USED, LEAVE WIRE LEADS WHICH WOULD NORMALLY BE CONNECTED TO WHITE LEADS UNCONNECTED.



WIRING DIAGRAM-GAS

#	PART NO.	Q	DESCRIPTION
1	489 631	1	TURN SIGNAL SWITCH
2	478 640	1	IGNITION SWITCH
3	481 854	1	FAN SWITCH (OPTIONAL)
4	207 075	1	PANEL LIGHT SWITCH
5	489 640	1	LIGHT SWITCH
6	388 019	1	SHAKER SWITCH
7	489 598	1	FUEL GAUGE
8	489 592	1	OIL GAUGE
9	478 363	1	HOUR METER
10	489 594	1	AMP METER
11	489 600	1	TEMPERATURE GAUGE
12	385 615	1	INTERLOCK SWITCH
13	478 358	1	FUEL GAUGE SENDER
14	481 794	1	BLOWER (OPTIONAL)
15	481 553	4	LIGHT SOCKET
	481 551	4	LIGHT BULB
	489 541	2	AMBER LENS
	489 544	2	RED LENS
16	489 633	1	PANEL LIGHT
17	491 876	1	WIRE HARNESS
18	491 820	2	SHAKER MOTOR
19	489 639	1	WARNING LIGHT
20	489 689	1	POSITIVE CABLE
21	491 902	1	BATTERY
22	456 458	1	NEGATIVE CABLE
23	489 691	1	CABLE
24	491 602	1	STARTER
25	478 698	1	OIL PRES. GAUGE SENDER
26	491 540	1	BALLAST RESISTOR
27	491 539	1	ELECTRONIC IGNITION CONTROL
28	491 546	1	IGNITION COIL
29	491 530	1	VOLTAGE REGULATOR
30	491 527	1	ALTERNATOR
31	481 888	1	TEMPERATURE GAUGE SENDER
32	489 688	1	WIRE HARNESS
33	489 694	1	ELECTRICAL BOX ASSEMBLY
34	481 560	2	HEAD LAMP ASSEMBLY
35	491 862	1	SHAKER RELAY
36	491 870	1	SHAKER TIMER
37	492 054	1	HORN
38	441 555	1	HORN SWITCH
39	488 688	1	FLASHER (OPTIONAL)
40	171 225	1	BRAKE LIGHT SWITCH
41	489 621	1	30 AMP FUSE
42	478 271	5	15 AMP FUSE
43	489 620	1	30 AMP FUSE
44	486 124	1	WIRE ASSEMBLY
45	489 700	1	WIRE ASSEMBLY
46	486 121	1	WIRE ASSEMBLY
47	491 862	1	RELAY
48	492 164	1	CONNECTOR
49	486 115	1	AIR CONDITIONER (OPTIONAL)
50	486 122	1	WIRE ASSEMBLY
51	486 128	1	WINDSHIELD WIPER MOTOR (OPTIONAL)
52	486 133	1	WIRE ASSEMBLY
53	492 164	1	CONNECTOR
54	441 961	2	FUSE BLOCK (NOT SHOWN)



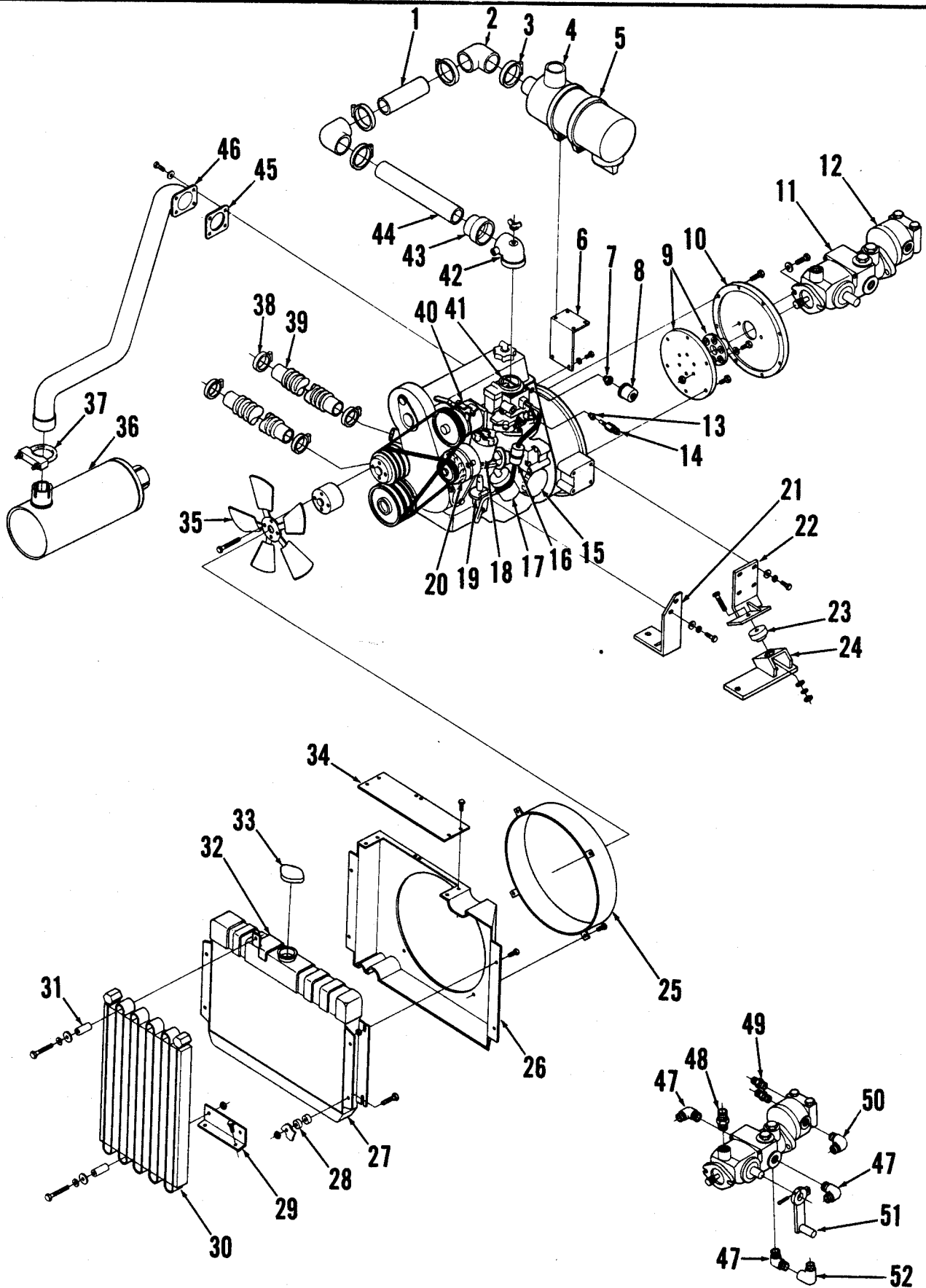
- FUSE IDENTIFICATION
1. HORN, SIGNAL LIGHTS
 2. HEAD, TAIL, PARKING AND GAUGE LIGHTS
 3. CAB BLOWER, SHAKER TIMER AND RELAY
 4. FILTER SHAKER
 5. GAUGES, WARNING LIGHT

△ WHEN TURN SIGNAL OPTION IS NOT USED, LEAVE WIRE LEADS WHICH WOULD NORMALLY BE CONNECTED TO WHITE LEADS UNCONNECTED

WIRING DIAGRAM DIESEL

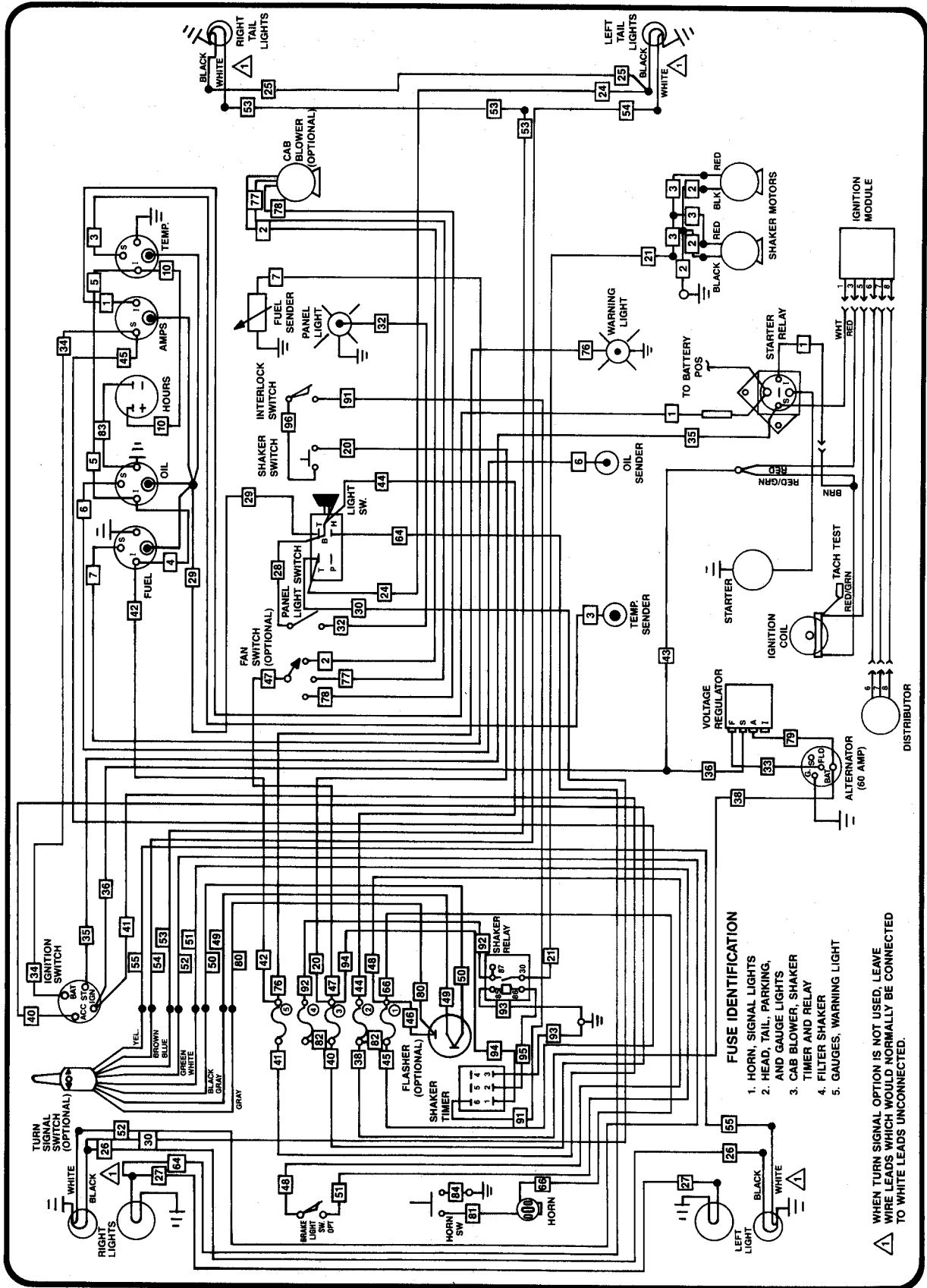
Item	Part No.	Qty	Description
1	489631	1	Turn Signal Switch
2	456466	1	Pilot Light
3	487204	1	Ignition Switch
4	481854	1	Fan Switch (Optional)
5	207075	1	Panel Light Switch
6	489640	1	Light Switch
7	489598	1	Fuel Gauge
8	489592	1	Oil Gauge
9	478363	1	Hour Meter
10	489594	1	Amp Meter
11	489600	1	Temperature Gauge
12	478358	1	Fuel Sender
13	481794	1	Blower (Optional)
14	481553	4	Light Socket
*	481551	4	Light Bulb
*	489541	2	Amber Lens
*	489544	2	Red Lens
15	489633	1	Panel Light
16	385615	1	Interlock Switch
17	388019	1	Shaker Switch
18	489639	1	Warning Light
19	491876	1	Wire Harness
20	491820	2	Shaker Motor
21	489689	1	Positive Cable
22	491902	1	Battery
23	456458	1	Negative Cable
24	487158	1	Starter
25	478698	1	Oil Sender
26	487165	1	Glow Plug Relay
27	481888	1	Temperature Sender
28	487163	4	Glow Plug
29	487159	1	Alternator
30	489690	1	Cable Assembly
31	491862	1	Shaker Relay
32	481560	2	Head Lamp Assembly
33	488688	1	Flasher
34	491870	1	Shaker Timer
35	492054	1	Horn
36	441555	1	Horn Switch
37	171225	1	Brake Light Switch
38	489620	1	30 Amp Fuse
39	478271	4	15 Amp Fuse

* = Not Shown



FORD ENGINE ASSEMBLY

I	PART #	QTY	DESCRIPTION	I	PART #	QTY	DESCRIPTION
1	491933	1	TUBE TSB 441, G-9	51	491952	1	LEVER
2	481349	2	ELBOW	52	900306	1	ELBOW
3	440213	4	HOSE CLAMP	*	487217	1	WATER PUMP (NOT SHOWN)
4	478710	1	AIR CLEANER	*	487219	1	ROCKER COVER (NOT SHOWN)
5	480650	2	BRACKET	*	490082	1	CHOKE CABLE (NOT SHOWN)
6	491937	1	MOUNTING BRACKET	*	487225	1	STARTER (NOT SHOWN)
7	740214	1	BUSHING	*	491967	1	THROTTLE CABLE (NOT SHOWN)
8	478698	1	OIL SENDER				
9	491924	1	COUPLING ASSEMBLY				
10	491919	1	PLATE				
11	488528	1	HYDROSTATIC PUMP				
12	488529	1	GEAR PUMP				
13	750366	1	BUSHING				
14	481888	1	TEMPERATURE SENDER				
15	487223	1	OIL FILTER				
16	487131	1	FUEL FILTER				
17	487135	1	IGNITION COIL				
18	487222	1	DISTRIBUTOR CAP				
	487220	1	ROTOR				
19	487134	1	FUEL PUMP				
20	487216	1	ALTERNATOR				
21	491931	1	ENGINE MOUNT				
22	491920	1	LEFT ENGINE MOUNT				
	478685	1	RIGHT ENGINE MOUNT				
23	478685	3	RUBBER MOUNT				
24	491949	1	LEFT MOUNT BRACKET				
	491950	1	RIGHT MOUNT BRACKET				
25	491965	1	FAN RING				
26	491955	1	FAN SHROUD				
27	487351	1	RADIATOR				
28	489767	4	SPACER				
29	488486	1	COOLER MOUNT				
30	487380	1	OIL COOLER				
31	488487	4	SPACER				
32	488489	2	BRACKET				
33	478693	1	RADIATOR CAP				
34	491959	1	COVER				
35	487129	1	FAN				
36	487260	1	MUFFLER				
37	487263	3	CLAMP				
38	131601	4	HOSE CLAMP				
39	487975	2	RADIATOR HOSE				
40	487132	1	GOVERNOR				
41	487130	1	CARBURETOR				
42	487133	1	AIR INTAKE ELBOW				
43	491938	1	REDUCER				
44	491934	1	TUBE TSB 441, G-9				
45	487126	1	GASKET				
46	491969	1	EXHAUST PIPE				
47	900117	3	ELBOW				
48	900006	1	CONNECTOR				
49	900005	2	CONNECTOR				
50	900106	1	ELBOW				



FUSE IDENTIFICATION

- 1. HORN, SIGNAL LIGHTS
- 2. HEAD, TAIL, PARKING AND GAUGE LIGHTS
- 3. CAB BLOWER, SHAKER TIMER AND RELAY
- 4. FILTER SHAKER
- 5. GAUGES, WARNING LIGHT

▲ WHEN TURN SIGNAL OPTION IS NOT USED, LEAVE WIRE LEADS WHICH WOULD NORMALLY BE CONNECTED TO WHITE LEADS UNCONNECTED.

