



Electronic Service Manuals

This electronic document is provided as a service to our customers. We do not create the contents of the information contained in this document. Should you have detailed questions pertaining to the information contained in this document, you may contact Michco, or the manufacturer which provided the original information in this electronic deliverable. Michco's only part in this electronic deliverable was the electronic assembly process.

You may contact Michco through the following methods:
Phone (517) 484-9312 or (800) 331-3339 MI, OH, IN only
2011 N. High St. -- Lansing, Michigan -- 48906
Fax: (517) 484-9836
Email: CustServ@Michco.com
Web site: www.Michco.Com
Parts Web site: www.FloorMachineParts.Com

Order Parts on Line at:
www.FloorMachineParts.Com

Directly to Parts & Service:
By Email: **Shop@Michco.com**
By Fax: (517) 702-2041
By Voice: Use numbers above.

Serving the Cleaning Industry Since 1922

Notice: All copyrighted material remains property of original owners, all trademarks are property of respective owners. Manuals are subject to Manufacturer's reproduction limitations. Originals or reproductions were provided by manufacturers through a request. We make no warranty as to the correctness of information provided in this document and you assume all risk.

PARTS LIST

RETRIEVER

MODEL 5600 G
5600 D

FORM NO. 042013
Jan. 15, 1979

This Parts List covers all
Model No. 5600 G after
Serial No. 685 452



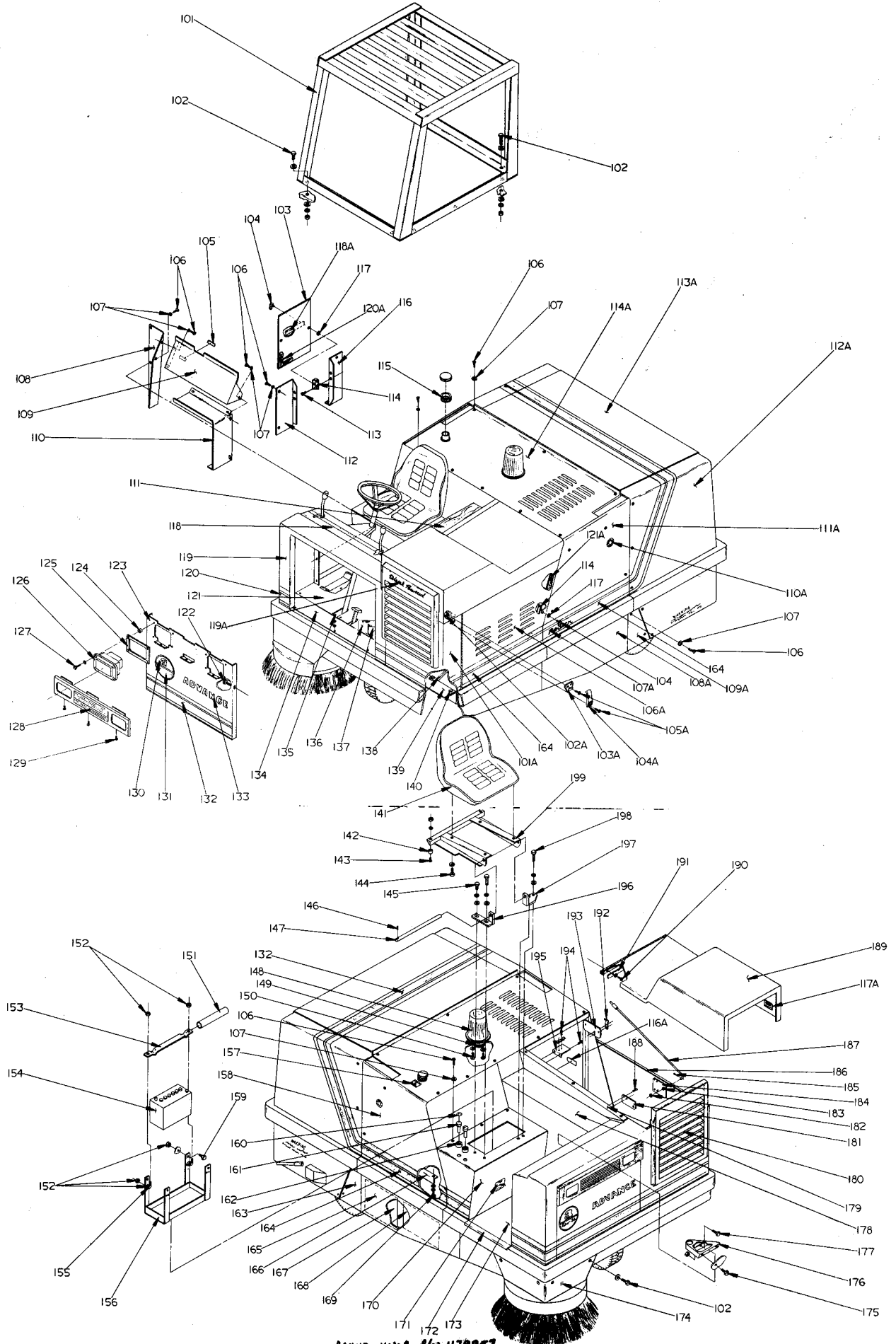
The  **Advance Machine Company**

We build cleaning machines that are all business.

ADVANCE MACHINE COMPANY, Spring Park, Minnesota 55384
ADVANCE MACHINE COMPANY, CANADA, LTD., 45 Iron Street, Rexdale, Ontario, Canada
ADVANCE INTERNATIONAL, INC., Parc de L'Europe, Luxembourg

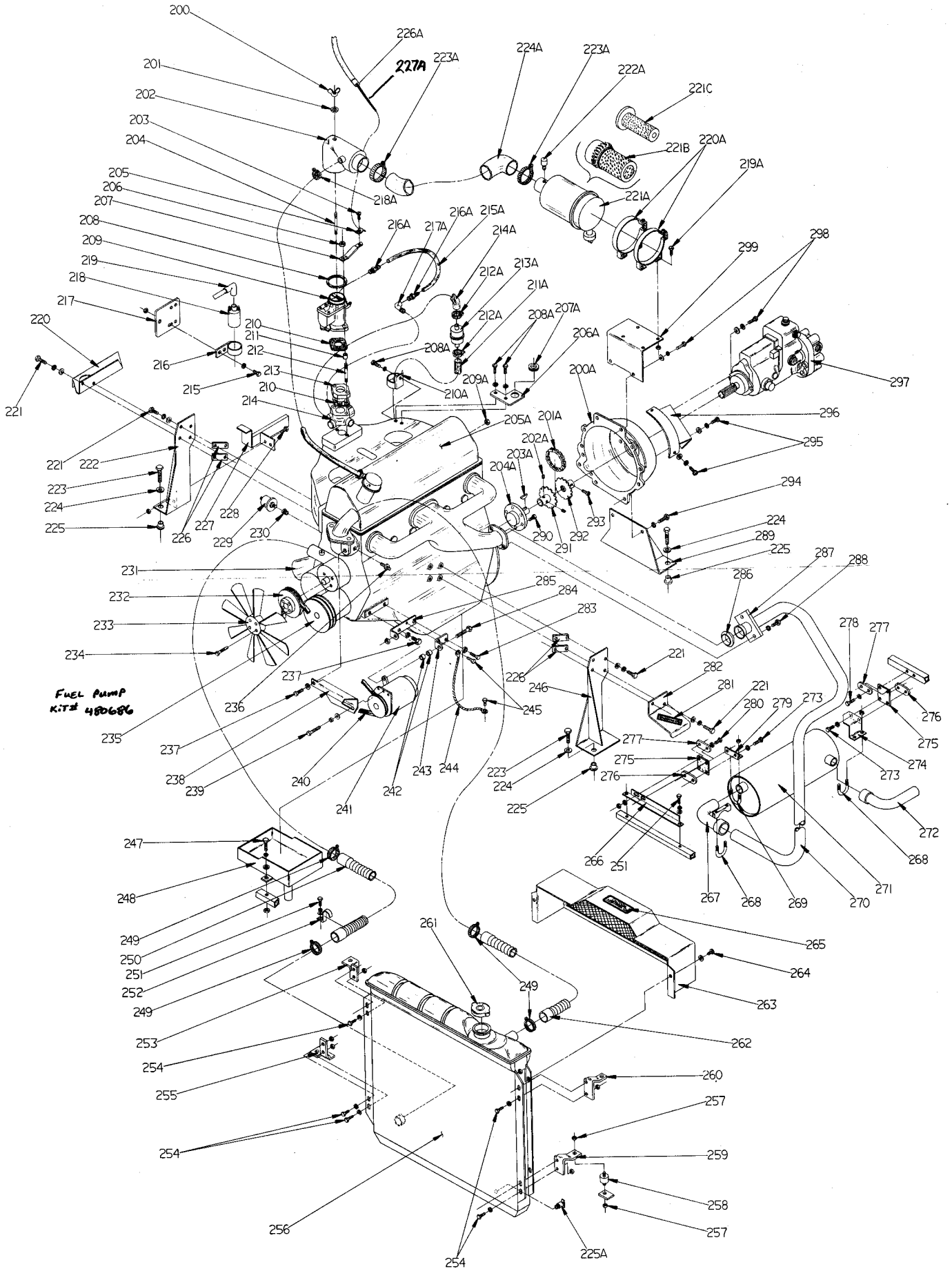
INDEX FOR FORM NUMBER 042013

<u>Description</u>	<u>Location</u>	<u>Page</u>
Broom, Main	D9	16
Broom, Side	D13	20
Drive Pedal Linkage	D3	10
Dust Control Filter & Hopper	E1	22
Dust Control Impeller	D1	8
Enclosed Cab	E9	30
Engine, Diesel (front View)	C12	6
Engine, Diesel (rear View)	C13	7
Engine, Gas (Ford)	C10	4
Hydraulic Diagram	E3	24
Outer Body	C8	2
Skirts & Broom Housing	D11	18
Wheel, Front Drive	D5	12
Wheels, Rear & Brakes	D7	14
Wiring Diagram (Diesel Model)	E7	28
Wiring Diagram (Ford Model)	E5	26

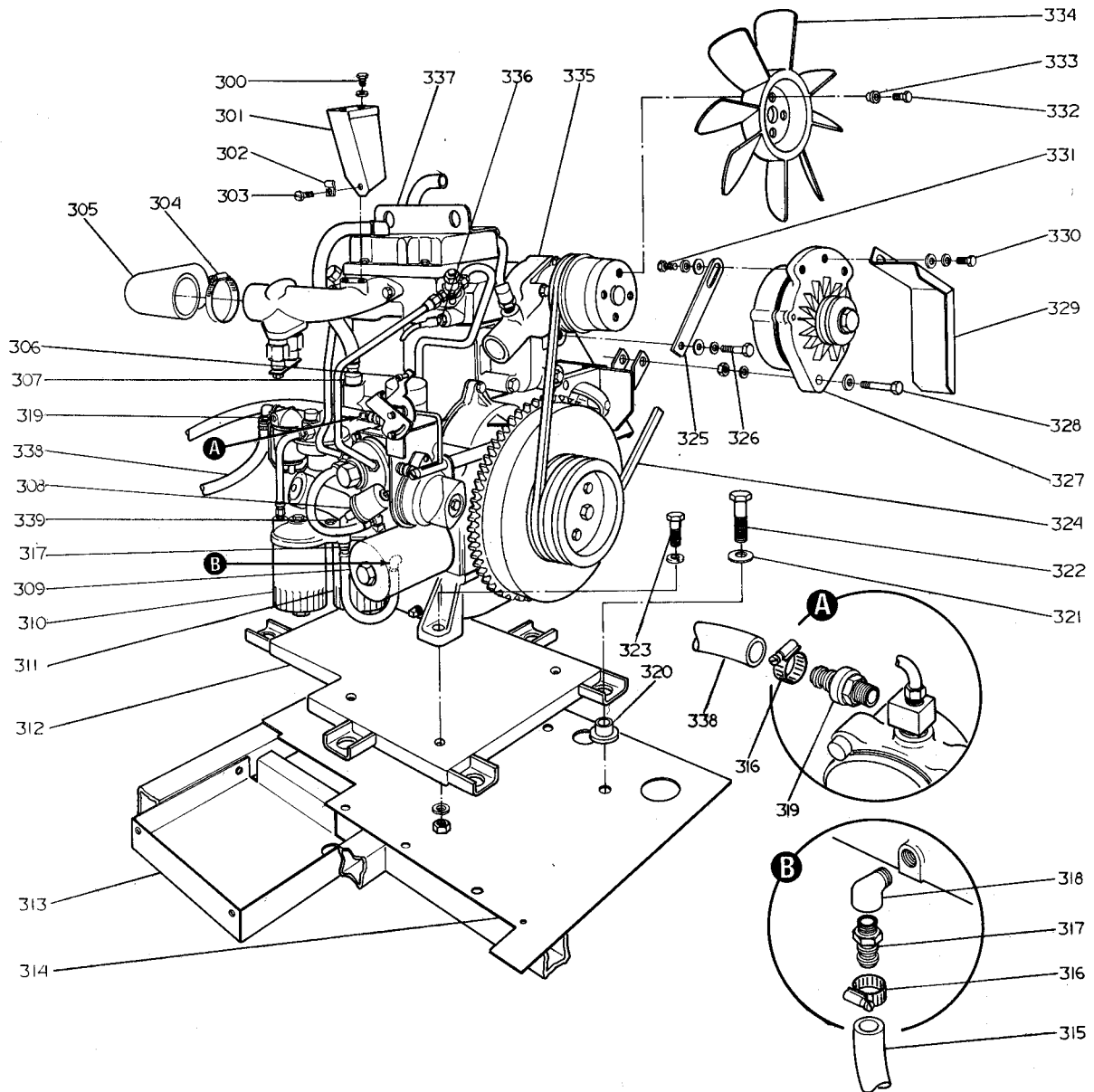


КОНУД КАНОБ №/N 479957
STOP FOR KANOB №/N 479963

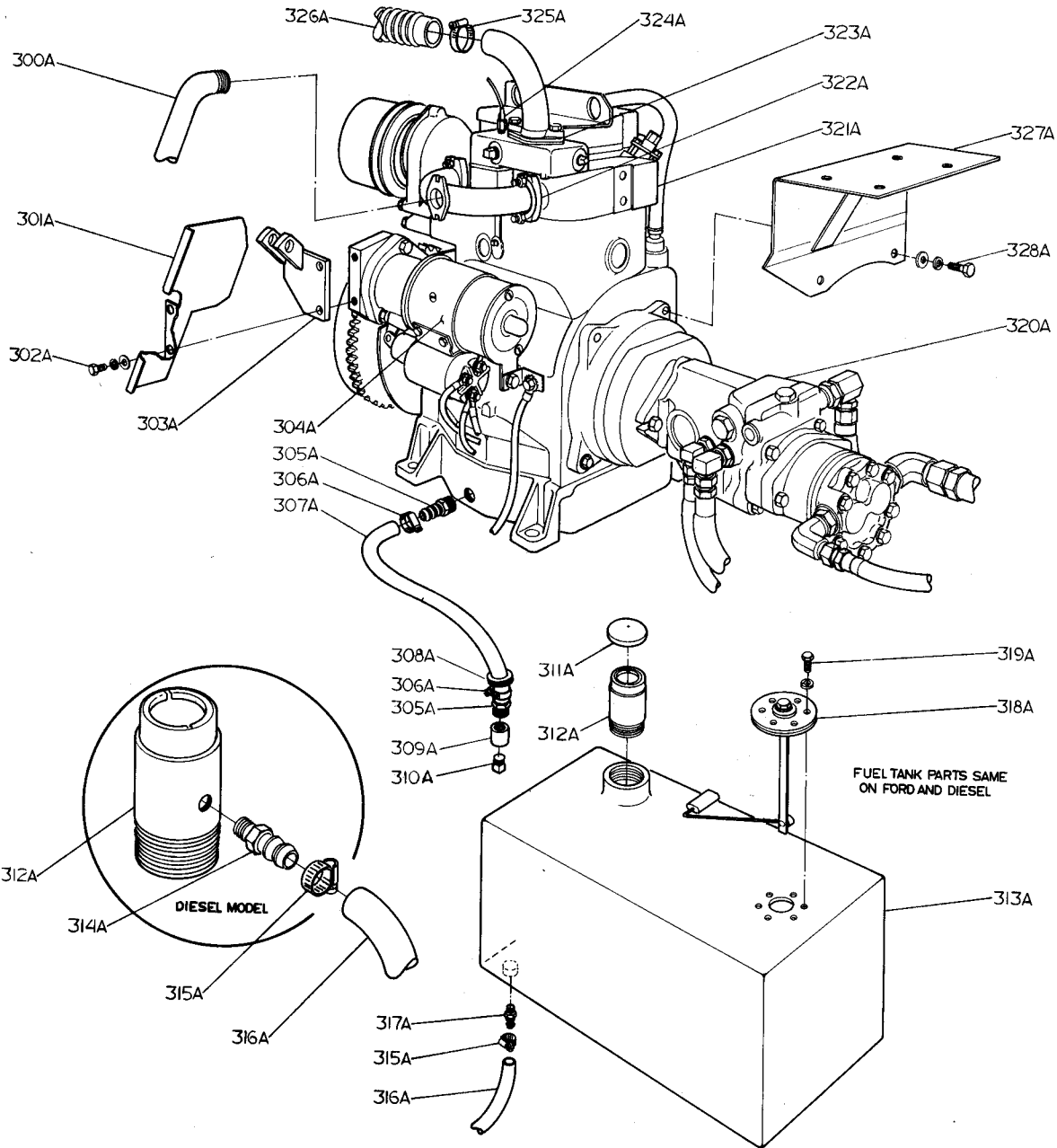
ITEM	PART NO.	QTY.	DESCRIPTION	ITEM	PART NO.	QTY.	DESCRIPTION
101	480 877	1	GUARD WELDMENT	165	479 816	1	PANEL WELDMENT
102		11	SCREW, Hex Hd. 1/2-13 X 1 w/lkw & 2 washers	166	477 578	2	BRACKET
103	480 944	1	PANEL, Access	167	025 127	1	DECAL, Hydraulic Schematic
104	448 104	3	SCREW, Fastener	168	025 092	1	DECAL, Wiring Diagram (Ford)
105	025 138	1	DECAL, Patent Pending		025 452	1	DECAL, Wiring Diagram (Diesel)
106		90	SCREW, Oval Hd. 10-24 X 1/2	169		8	SCREW, Hex Hd. 10-24 X 1/2 w/washer & lkw
107	449 340	90	WASHER, Finishing	170	479 795	1	PANEL WELDMENT
108	479 837	1	PANEL	171	025 104	1	DECAL, Side Broom
109	480 932	1	PANEL	172	477 582	1	FLOOR MAT
110	480 947	1	PANEL	173	481 494	1	FLOOR MAT
111	025 091	1	DECAL, Side Panel	174	479 876	1	GUARD, Side Broom
112	480 938	1	PANEL	175		2	SCREW, Hex Hd. 1/4-20 X 1/2 w/whiz nut
113		6	SCREW, Pan Hd. #8-32 X 5/16	176	479 841	1	PLATE WELDMENT
114	448 109	3	PLATE, Mounting	177		1	SCREW, Hex Hd. 5/16-18 X 3/4
115	477 512	1	GROMMET	178	480 956	1	PANEL
116	480 935	1	PANEL	179	479 861	1	PANEL WELDMENT
117	448 108	3	WASHER, Retainer	180	481 404	1	GRILLE WELDMENT
118	025 085	1	DECAL, Control Panel (Ford Model)	181	481 552	1	PLATE, Hood Rod (Diesel only)
	025 450	1	DECAL, Control Panel (Diesel Model)	182		1	WASHER, Flat 5/16
119	481 484	1	CHASSIS WELDMENT	183	163 007	1	GROMMET
120	016 558	1	DECAL, Stripe	184	481 606	1	PLATE, Hood Rod (Ford only)
121	481 384	1	FLOOR WELDMENT	185		1	PIN, Cotter 1/16 X 5/8
122		7	SCREW, Hex Hd. #10-24 X 5/8 w/shake-proof & flat washer	186	479 860	1	GASKET, 1/8 X 3/4 X 38
123	481 376	1	FRONT PANEL WELDMENT	187	481 634	1	HOOD ROD ASSEMBLY
124	481 538	4	SPACER	188		2	SCREW, Flat Hd. 10-24 X 5/8
125	481 536	2	BACKPLATE, Headlight	189	481 440	1	HOOD WELDMENT
126	481 560	2	HEADLAMP ASSEMBLY	190		3	SCREW, Pan Hd. 1/4-20 X 5/8 w/shake-proof washer
127		8	SCREW, Pan Hd. #10-24 X 1 1/4 w/flat washer	191	479 964	1	STRAP
128	481 528	1	GRILLE HEADLIGHT	192	477 620	1	CLAMP
129		3	SCREW, Pan Hd. #10-24 X 3/8	193	481 608	1	BRACKET, Clamp (Ford only)
130	024 958	2	EBLEM, Advance	194		4	SCREW, Pan Hd. 10-24 X 1/2
131	025 082	2	DECAL, Retriever 56	195	481 524	1	BRACKET, Clamp (Diesel only)
132	025 134	2	DECAL, Stripe	196	477 560	1	PLATE WELDMENT RH.
133	016 543	2	DECAL, Advance	197	477 569	1	SEAT BRACKET WELDMENT
134	481 382	1	PLATE, Floor Cover	198		3	SCREW, Hex Hd. 3/8-16 X 2 1/4 w/lkw washer & nut
135		10	SCREW, Pan Hd. #10-24 X 5/8 w/shake-proof & flat washer	199	481 354	1	SEAT BRACKET WELDMENT
136	477 527	1	SHIELD	101A	481 368	1	PANEL WELDMENT
137	481 390	1	COVER, Brake Cyl.	102A		2	NUT, #6-32
	481 514	1	MAT, Brake Cover	103A	342 564	1	PLATE
138	481 568	1	BRACE	104A	471 194	1	LATCH ASSEMBLY
139	481 320	1	PLATE	105A		4	SCREW, Pan Hd. 6-32 X 3/8 w/shake-proof washer
140		7	SCREW, Hex Hd. 1/4-20 X 5/8 w/flat washer & whiz nut	106A	481 392	1	DOOR WELDMENT
141	481 346	1	SEAT	107A	025 118	2	EMBLEM, Retriever
142	330 708	2	BUMPER	108A	479 814	1	PANEL WELDMENT
143		2	SCREW, Pan Hd. #10-24 X 3/4 w/lkw & nut	109A	479 826	1	PANEL WELDMENT
144		4	SCREW, Hex Hd. 5/16-18 X 5/8 w/lkw	110A	025 106	2	DECAL, Safety Pins
145		1	SCREW, Hex Hd. 3/8-16 X 7/8 w/lkw & washer	111A	479 797	1	PANEL
146		1	PIN, Spring 1/8 X 3/4	112A	479 040	1	HOPPER ASSEMBLY
147	477 540	1	SHAFT	113A	481 578	1	COVER WELDMENT
148	448 660	1	LAMP, Warning	114A	479 807	1	PANEL
	448 665	1	LENS, Red	116A	030 048	1	DECAL, Dipstick
	448 670	1	LENS, Amber	117A	025 460	1	DECAL, Hood
	448 666	1	BULB	118A	025 360	1	DECAL, Caution
149	570 206	1	GROMMET	119A	025 458	1	DECAL, Diesel Powered (Diesel Model only)
150		2	SCREW, Pan Hd. #10-24 X 1 w/washer	120A	481 680	1	GASKET, 1/8 X 3/4 X 68
151	481 452	1	TUBE, PVC	121A	481 678	1	GASKET, 1/8 X 3/4 X 21
152		10	NUT, Whiz 5/16-18				
153	477 575	1	PLATE, Battery				
154	441 511	1	BATTERY, Ford - 62 AMP				
	206 962	1	BATTERY, Diesel - 93 AMP				
155	477 548	2	STUD, Bent				
156	477 577	1	BATTERY STRAP WELDMENT				
157	025 454	1	DECAL, Diesel Fuel (Diesel only)				
158	479 799	1	PANEL WELDMENT				
159		4	SCREW, Hex Hd. 5/16-18 X 1/2				
160	025 120	2	DECAL, Safety Pin				
161	477 580	2	PIN, Safety				
162	477 514	2	GROMMET				
163	479 828	1	PANEL WELDMENT				
164	016 554	3	DECAL, Stripe				



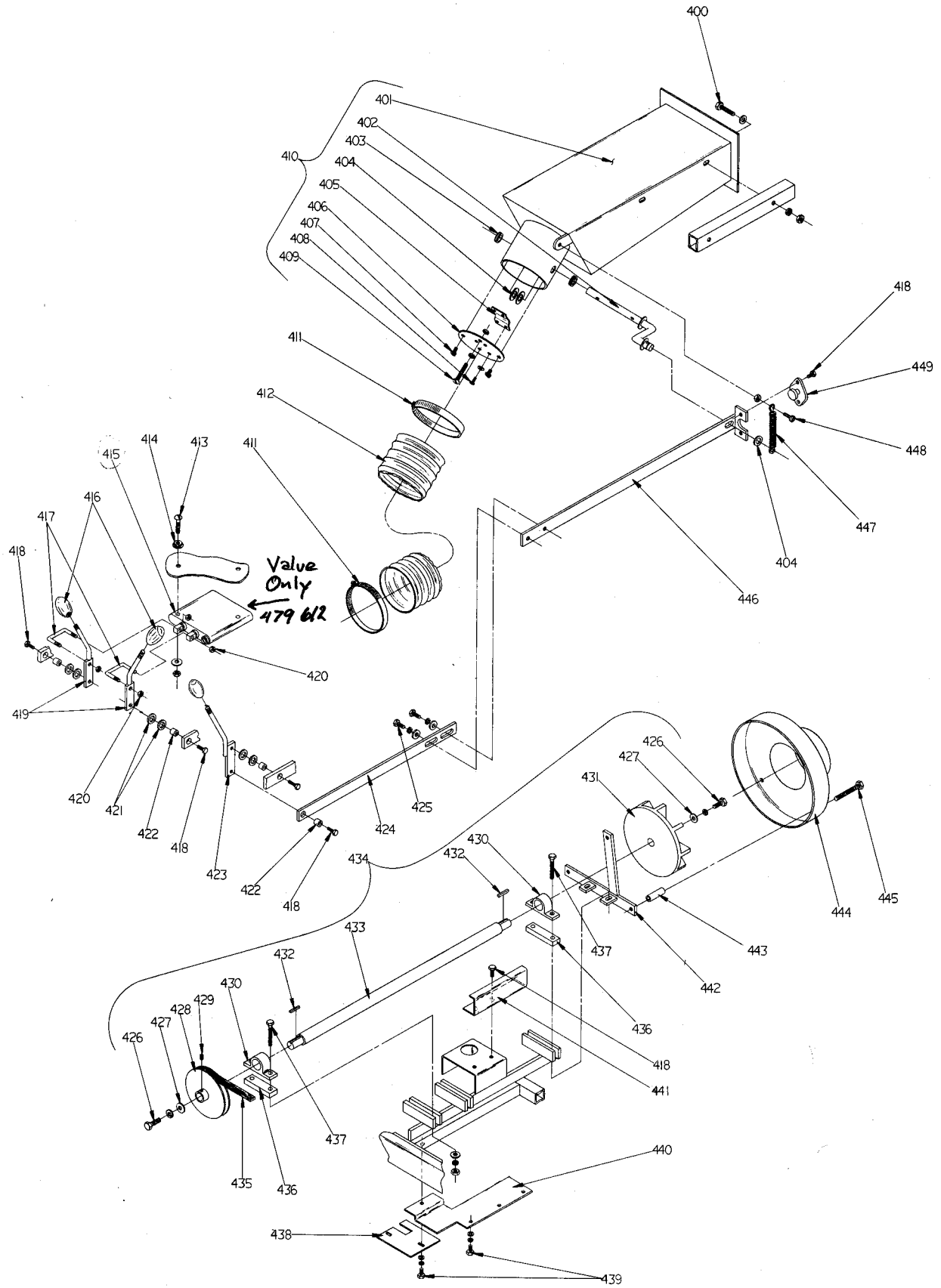
ITEM	PART NO.	QTY.	DESCRIPTION	ITEM	PART NO.	QTY.	DESCRIPTION
200	201 677	1	NUT, Wing	269	478 466	1	CLAMP, Muffler (also used on Diesel Model)
201	745 715	1	WASHER, Sealing	270	481 766	1	TUBE WELDMENT
202	481 604	1	ADAPTER WELDMENT	271	478 711	1	MUFFLER (also used on Diesel Model)
203		1	SCREW, Pan Hd. 10-24 X 1/4	272	480 758	1	TUBE WELDMENT (also used on Diesel Model)
204	481 630	1	STUD	273		4	Screw, Hex Hd. 1/4-20 X 1/2 w/lkw
205	344 265	4	CLAMP, Cable	274	480 659	1	BRACKET (also used on Diesel Model)
206		2	NUT, Hex 5/16-24	275	478 726	2	MOUNT, Diaphragm (also used on Diesel Model)
207	480 833	1	BRACKET	276	481 468	2	NUT PLATE (also used on Diesel Model)
208	480 713	1	GASKET, Air Horn	277	481 470	2	PLATE (also used on Diesel Model)
209	480, 672	1	CARBURETOR	278		2	SCREW, Hex Hd. 1/4-28 X 1/2 w/lkw
210	480 675	2	GASKET, Carburetor	279	480 763	1	BRACKET (also used on Diesel Model)
211	480 677	2	SPACER, Carburetor	280		2	SCREW, Hex Hd. 1/4-20 X 1/2 w/whiz nut & lkw
212	480 784	2	STUD	281	030 072	1	DECAL, Hot Stack
213	480 843	1	SPACER	282	481 652	1	BRACKET, Decal
214	478 481	1	GOVERNOR	283		1	SCREW, Hex Hd. 3/8-16 X 3/4 w/lkw
215		2	SCREW, Hex Hd. 1/4-20 X 1/2 w/washer & whiz nut	284		1	SCREW, Hex Hd. 1/2-13 X 3 3/4 w/nut
216	480 693	1	STRAP, Coil	285	480 775	1	BRACKET
217	481 606	1	PLATE, Hood Rod	286	480 709	1	SPACER, Exhaust
218	480 691	1	COIL ASSEMBLY	287	480 760	1	CLAMP
219	480 695	1	WIRE, High Tension	288		2	SCREW, Hex Hd. 5/16-13 X 1 w/lkw
220	478 485	1	GUARD, Engine	289	481 720	1	ENGINE SUPPORT WELDMENT
221		8	SCREW, Hex Hd. 5/16-18 X 1 1/4 w/washer & lkw	290		6	SCREW, Hex Hd. 3/8-24 X 1 1/4
222	480 739	1	BRACKET, Right	291	480 817	1	SPROCKET
223		2	SCREW, Hex Hd. 1/2-13 X 2	292	480 826	1	SPROCKET
224	480 742	4	WASHER	293		2	SCREW, Socket Hd. Cap 1/4-20 X 7/8
225	478 685	4	MOUNT, Engine	294		2	SCREW, Hex Hd. 1/2-13 X 1 w/lkw
226	480 835	4	SPACER	295		4	SCREW, Pan Hd. 10-24 X 1/2 w/washer & lkw
227	480 458	1	GUARD WELDMENT	296	480 811	1	COVER WELDMENT
228		2	SCREW, Pan Hd. 10-24 X 1/2 w/nut	297	479 600	1	PROPULSION PUMP
229	478 698	1	PRESSURE SENDER, Oil	298		4	SCREW, Hex Hd. 3/8-16 X 1 1/4 w/washer & lkw
230	740 214	1	BUSHING	299	480 781	1	BRACKET
231	480 704	1	ELEMENT, Oil Filter	200A	480 653	1	BELL HOUSING
232	480 705	1	PULLEY	201A	480 820	1	CHAIN, Coupler
233	480 689	1	FAN, Cooling	202A		2	SCREW, Socket Set 1/4-20 X 1/4
234	480 707	4	BOLT	203A	378 291	1	KEY
235	480 701	1	PULLEY, Crankshaft	204A	480 790	1	ADAPTER SHAFT
236	478 695	1	TEMPERATURE SENDER	205A	481 656	1	ENGINE ASSEMBLY
237		2	SCREW, Hex Hd. 3/8-16 X 1/2 w/lkw	478 472		1	ENGINE, Ford 4 cyl. Gas
238	480 778	1	BRACKET	480 676		1	PLATE
239		1	SCREW, Hex Hd. 5/16-18 X 5/8 w/washer & lkw	207A	760 212	1	GROMMET
240	480 828	1	V-BELT	208A		3	SCREW, Hex Hd. 5/16-13 X 5/8 w/lkw
241	478 483	1	ALTERNATOR 37AMP	209A	480 814	1	NUT, Metric
242	367 486	2	BUSHING	210A	480 681	1	BRACKET, Fuel Filter
243	480 772	1	BRACKET	211A	481 686	1	TUBE Rubber .312 X 60"
244	441 600	1	CABLE	212A	219 932	2	CLAMP, Hose
245		2	SCREW, Hex Hd. 5/16-18 X 1/2 w/washer	213A	480 679	1	FUEL FILTER KIT
246	480 733	1	BRACKET, Left	214A	480 683	1	HOSE, Filter Fuel
247		1	SCREW, Hex Hd. 3/8-16 X 1 1/4 w/washer lkw & nut	215A	760 200	1	HOSE, Fuel
248	480 802	1	PAN WELDMENT	216A	477 522	2	BARB
249	329 145	4	CLAMP, Hose	217A	111 309	1	ELBOW
250	480 829	1	HOSE, Radiator	218A	112 771	2	CLAMP, Hose
251		3	SCREW, Hex Hd. 1/4-20 X 1/2 w/washer & lkw	219A		4	SCREW, Hex Hd. 5/16-18 X 1/2 w/nut
252	480 434	1	STRAP	220A	480 650	2	BAND, Mounting (also used on Diesel Model)
253	481 626	1	MOUNT, Top R.H. (Ford Model)	221A	478 710	1	AIR CLEANER (also used on Diesel Model)
	481 460	1	MOUNT, R.H. (Diesel Model)	221B	478 720	1	ELEMENT, Primary
254		8	SCREW, Hex Hd. 1/4-20 X 5/8 w/washer & whiz nut	221C	478 722	1	ELEMENT, Secondary Safety
255	481 628	1	MOUNT, Lower R.H. (Ford Model)	222A	478 461	1	SERVICE INDICATOR (also used on Diesel Model)
	481 460	1	MOUNT, R.H. (Diesel Model)	223A	440 213	2	CLAMP, Hose
256	478 689	1	RADIATOR (also used on Diesel Model)	224A	480 463	1	HOSE, Air Cleaner
257		8	NUT, Hex 1/4-20	225A	386 420	1	VALVE, Drain (also used on Diesel Model)
258	478 684	4	MOUNT, Radiator	226A	478 454	1	CABLE, Throttle (also Used on Diesel Model)
259	481 632	1	MOUNT, Lower L.H. (Ford Model)	478 456		1	CABLE, Choke
	481 472	1	MOUNT, Lower L.H. (Diesel Model)	227A	456 795	1	CABLE only
260	481 624	1	MOUNT, Top L.H. (Ford Model)				KNOB FOR CABLE P/N 478455
	481 462	1	MOUNT, Top L.H. (Diesel Model)				
261	478 693	1	CAP, Radiator (also used on Diesel Model)				
262	478 725	1	HOSE, Radiator				
263	481 644	1	FAN SHROUD WELDMENT (Ford)				
	481 216	1	FAN SHROUD WELDMENT (Diesel)				
264		2	SCREW, Pan Hd. #10-24 X 3/8 w/washer & whiz nut				
265	030 080	1	DECAL, Hands Clear				
266	480 769	1	BRACKET (also used on Diesel Model)				
267	480 757	1	TUBE WELDMENT (also used on Diesel Model)				
268	343 236	2	CLAMP, Muffler (3 on Diesel Model)				



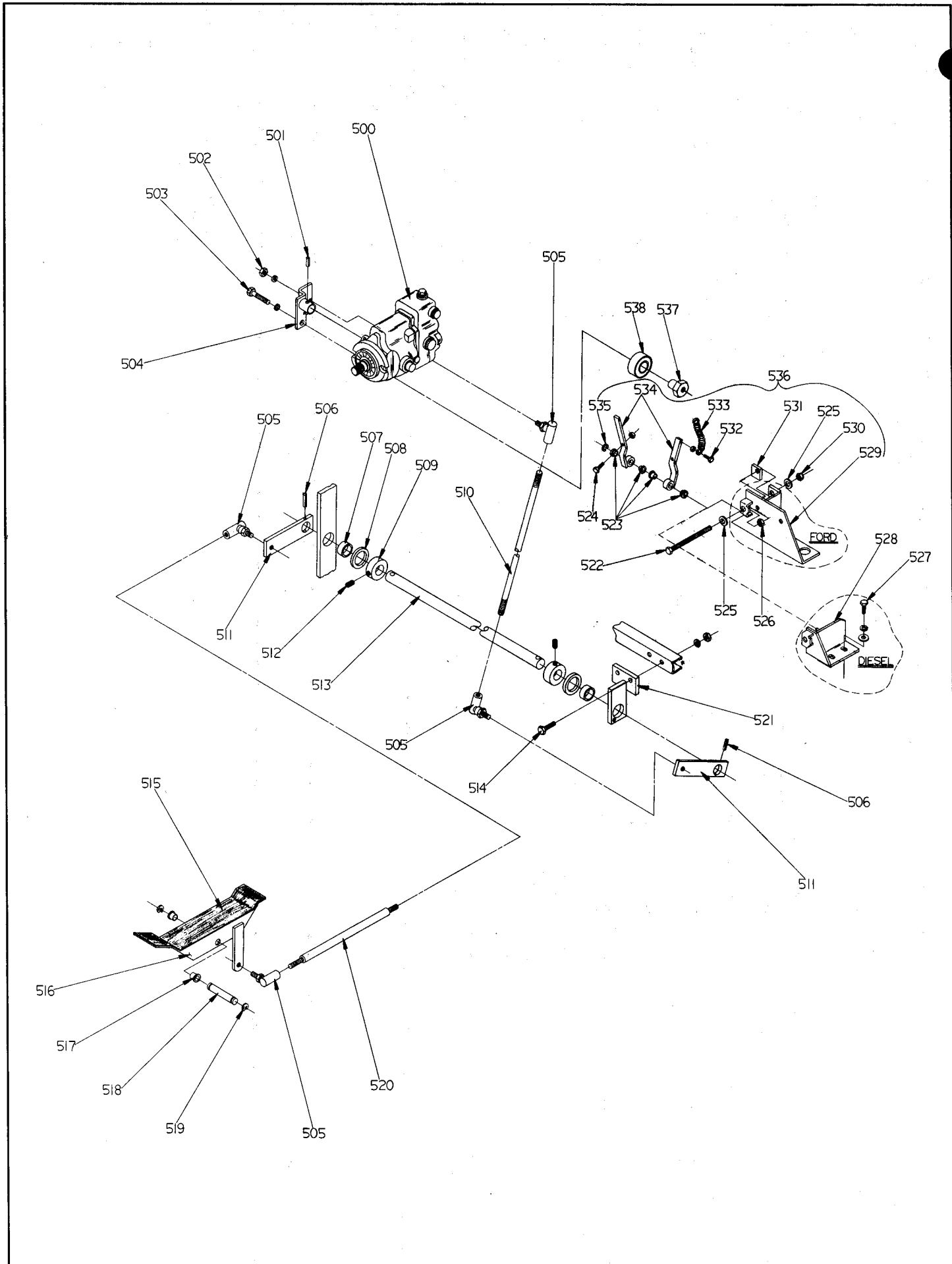
ITEM	PART NO.	QTY.	DESCRIPTION	ITEM	PART NO.	QTY.	DESCRIPTION
300		2	SCREW, Hex Hd. 1/4-20 X 1/2 w/lkw	323		4	SCREW, Hex Hd. 3/8-16 X 1 1/2 w/washer, lkw & nut
301	481 248	1	BRACKET, Throttle			1	BELT
302	344 265	1	CLAMP, Cable	324	481 482	1	BRACKET, Alternator
303		1	SCREW, Pan Hd. 10-24 X 1/2 w/whiz nut	325	481 236	1	SCREW, Hex Hd. 3/8-16 X 4 w/lkw & washer
304	352 829	1	CLAMP, Hose	326	481 674	2	ALTERNATOR 37 amp
305	481 328	1	ELBOW, Air Cleaner	327	478 483	1	SCREW, Hex Hd. 1/2-13 X 2 1/2 w/washer, lkw & nut
306	442 445	1	SWIVEL	328		1	GUARD, Alternator
307	481 215	1	BREATHER FILTER	329	481 246	1	SCREW, Hex Hd. 5/16-18 X 1/2 w/lkw
308	478 698	1	SENDER, Oil Pressure	330		2	SCREW, Hex Hd. 5/16-18 X 3/4 w washer & lkw
309	481 209	1	OIL FILTER	331		1	SCREW, Hex Hd. 5/16-18 X 1 w/lkw
310	481 211	1	PRIMARY FUEL FILTER	332		4	SPACER
311	481 213	1	SECONDARY FUEL FILTER	333	481 542	4	FAN, Cooling
312	481 272	1	ENGINE MOUNT	334	481 544	1	WATER PUMP KIT
313	477 526	1	PLATE (also used on Ford Model)	335	481 233	1	GLO PLUG, 12 Volt
314	477 524	1	Floor Panel (also used on Ford Model)	336	481 221	2	GLO PLUG GASKET
315	481 682	1	TUBE, Rubber .187 X 10"	337	481 223	2	ENGINE, Diesel
316	756 364	4	CLAMP, Hose	338	481 208	1	DIESEL ENGINE ASSEMBLY
317	477 522	2	BARB	339	481 526	1	TUBE, Rubber .187 X 48"
318	111 309	1	ELBOW		481 684	2	ELBOW
319	481 516	2	BARB, Flare Invert		481 658	1	
320	478 685	6	MOUNT, Engine				
321	480 742	6	WASHER				
322		6	SCREW, Hex Hd. 1/2-13 X 3				



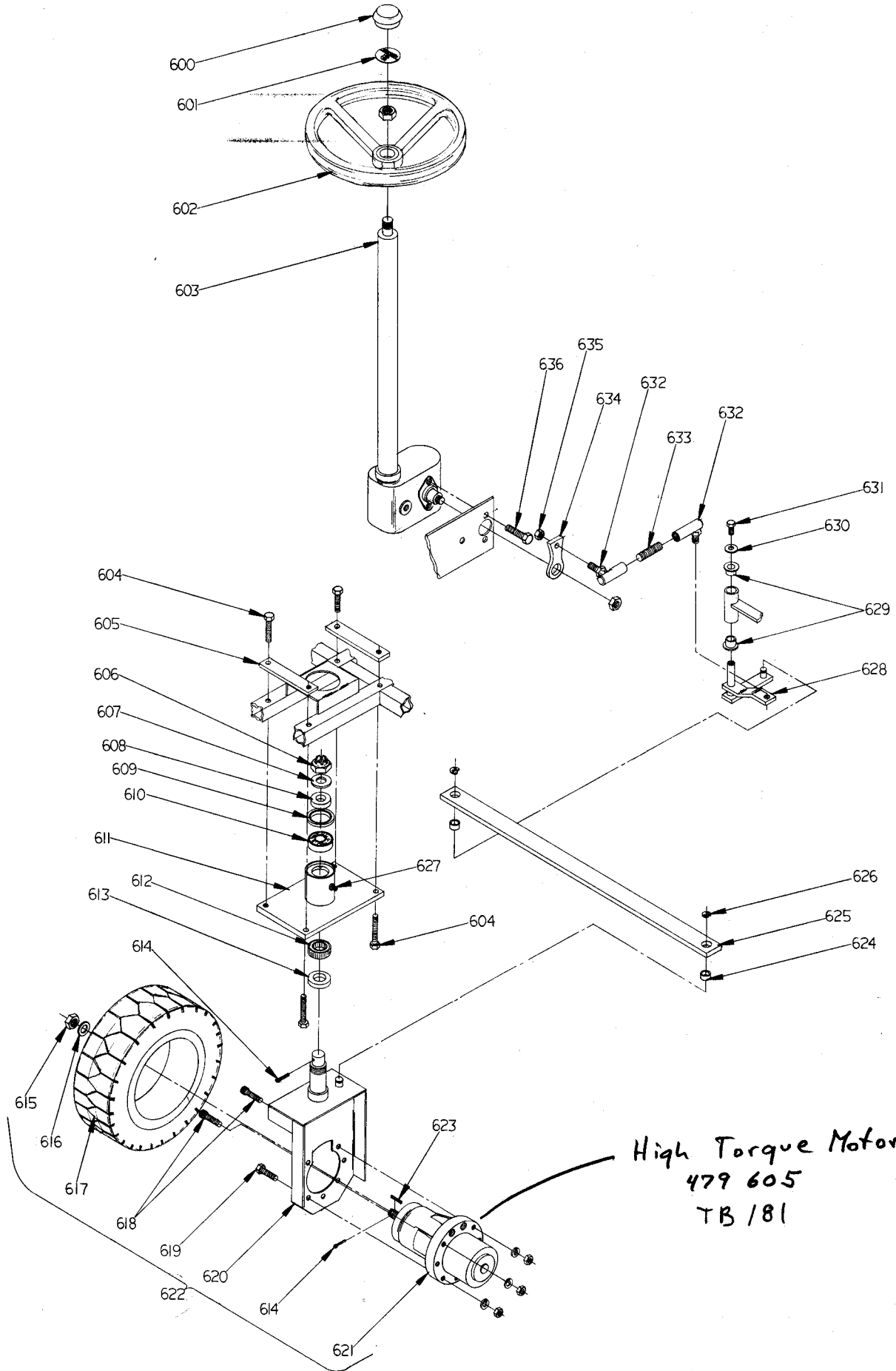
ITEM	PART NO.	QTY.	DESCRIPTION	ITEM	PART NO.	QTY.	DESCRIPTION
300A	481 228	1	PIPE, Exhaust Weldment	317A	477 523	1	BARB (Ford Model)
301A	481 244	1	SHIELD, Heat		369 594	1	BARB (Diesel Model)
302A		2	SCREW, Hex Hd. 5/16-18 X 3/4 w/lkw & washer	318A	478 358	1	SENDER UNIT
303A	481 238	1	BRACKET, Alternator	319A		5	SCREW, Pan Hd. 10-32 X 7/16 w/washer & lkw
304A	481 229	1	STARTER MOTOR ASSEMBLY	320A	479 600	1	PROPULSION PUMP
305A	749 202	2	BARB, Hose	321A	481 231	1	HEAD GASKET
306A	112 771	2	CLAMP, Hose		481 225	1	GASKET KIT
307A	481 688	1	HOSE 3/8 X 3/4 X 12	322A	481 227	1	EXHAUST MANIFOLD GASKETS
	481 690	1	OIL DRAIN ASSEMBLY	323A	481 217	1	THERMOSTAT
308A	477 514	1	GROMMET		481 219	1	THERMOSTAT GASKET
309A	111 821	1	COUPLING	324A	478 695	1	SENDER, Temperature
310A	113 182	1	PLUG, Pipe	325A	329 145	4	CLAMP, Radiator Hose
311A	478 502	1	GAS CAP	326A	478 725	2	HOSE, Radiator
312A	481 466	1	FILLER NECK (Diesel Model)	327A	481 398	1	BRACKET
	478 514	1	FILLER NECK (Ford Model)	328A		2	SCREW, Hex Hd. 3/8-16 X 1 w/lkw & washer
313A	478 467	1	TANK WELDMENT, Fuel				
314A	369 594	1	BARB, (Diesel Model)				
315A	219 932	2	CLAMP, Hose				
316A	481 684	2	TUBE, Rubber .187 X 48" (Diesel Only)				
	481 686	1	TUBE, Rubber .312 X 60" (Ford Only)				



ITEM	PART NO.	QTY.	DESCRIPTION	ITEM	PART NO.	QTY.	DESCRIPTION
400		4	SCREW, Hex Hd. 1/4-20 X 2 3/8 w/washer, lkw, & nut	481	490	1	BRACKET WELDMENT (Diesel Model)
401	477 977	1	ADAPTER WELDMENT	443	478 762	3	SPACER
402	477 939	1	ROD	444	478 672	1	SHROUD
403	477 935	2	BUSHING, Nylon	445		3	SCREW, Hex Hd. 1/4-20 X 3
404		3	WASHER, Flat 5/16	446	478 002	1	LINKAGE WELDMENT
405	477 976	1	CLAMP	447	365 068	1	SPRING
406	477 937	1	PLATE	448		1	SCREW, Hex Hd. 1/4-20 X 1 1/4 w/nut
407		2	SCREW, Socket Hd. #8-32 X 1/2	449	441 555	1	SWITCH, Starter
408		4	SCREW, Pan Hd. #8-32 X 1/4 w/shakeproof lkw				
409		1	SCREW, RD Hd. 1/4-20 X 3" w/2 Hex Nuts				
410	477 978	1	ADAPTER ASSEMBLY				
411	355 488	2	CLAMP, 6"				
412	478 009	1	HOSE				
413		2	SCREW, Oval Hd. 1/4-20 X 1 3/4 w/washer & nut				
414		2	WASHER, Finishing 1/4				
415	479 611	1	VALVE ASSEMBLY				
416	378 534	3	KNOB				
417	477 988	2	LINKAGE (included on Valve Assembly)				
418		8	SCREW, Hex Hd. 1/4-20 X 1/2				
419	477 983	2	LEVER				
420		4	NUT, Hex 10-24				
421	163 767	6	WASHER, Bowed				
422	379 298	4	BUSHING				
423	477 993	1	LEVER				
424	477 998	1	STRAP				
425		2	SCREW, Hex Hd. 1/4-20 X 1/2 w/washer & lkw				
426		2	SCREW, Hex Hd. 5/16-18 X 1/2 w/lkw				
427	358 959	2	WASHER				
428	478 715	1	SHEAVE				
429		1	SCREW, Socket Set 5/16-18 X 3/8				
430	390 917	2	PILLOW BLOCK				
431	478 668	1	IMPELLER				
432	158 135	2	KEY				
433	478 703	1	SHAFT (Ford Model)				
	481 242	1	SHAFT (Diesel Model)				
434	480 635	1	IMPELLER ASSEMBLY (Ford Model)				
	481 548	1	IMPELLER ASSEMBLY (Diesel Model)				
435	478 719	1	BELT (Ford Model) 3/4 x 3/8				
	478 718	1	BELT (Diesel Model)				
436	481 488	2	BLOCK, Bearing (Diesel Model only)				
437		4	SCREW, Hex Hd. 3/8-16 X 2 1/2 (3 1/4" long on Diesel Model) w/washer & lkw				
438	480 990	1	PANEL				
439		5	SCREW, Hex Hd. 10-24 X 3/8 w/washer & lkw				
440	481 486	1	SHIELD				
441	481 492	1	GUARD, Shaft				
442	478 700	1	BRACKET WELDMENT (Ford Model)				

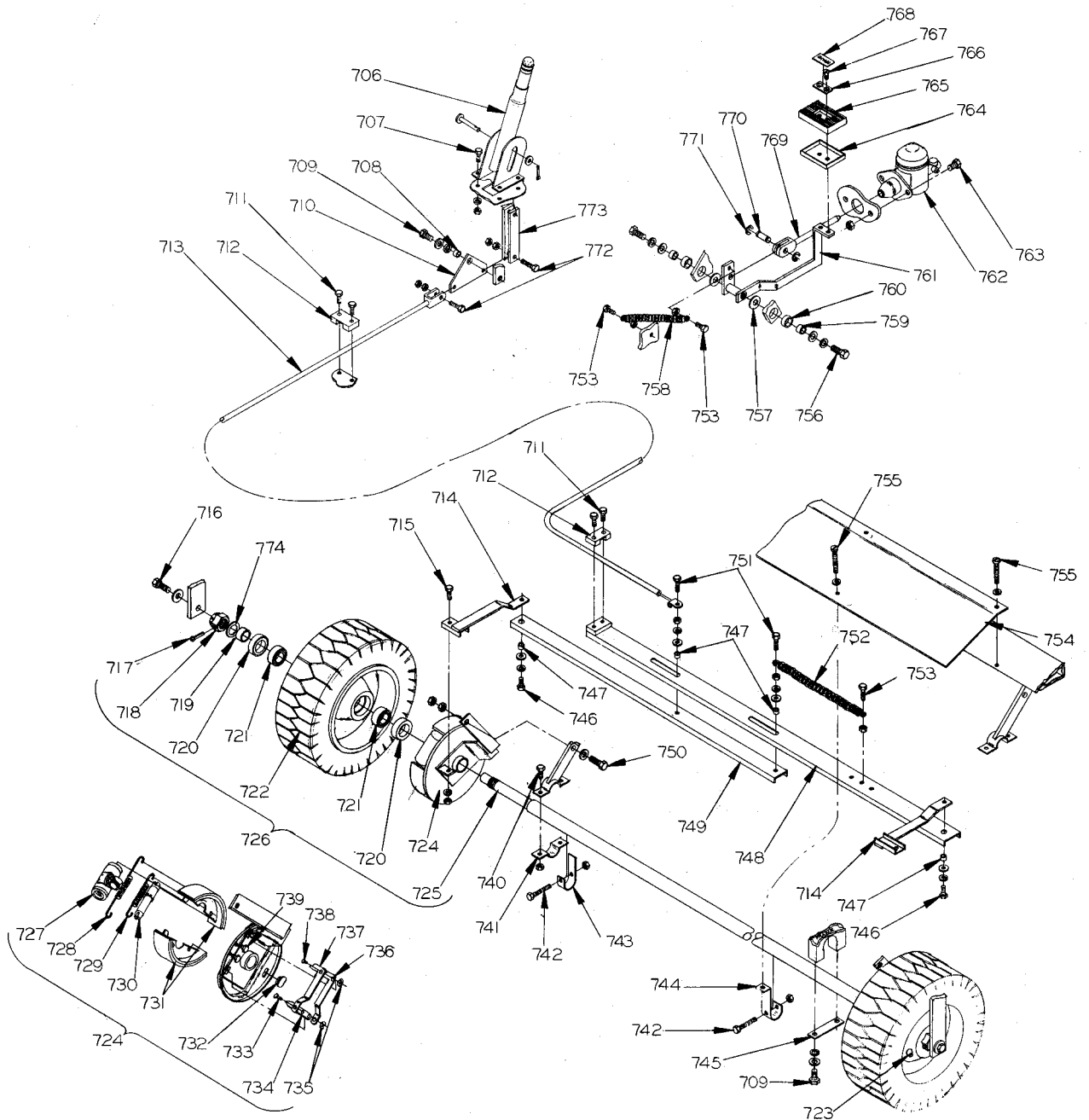
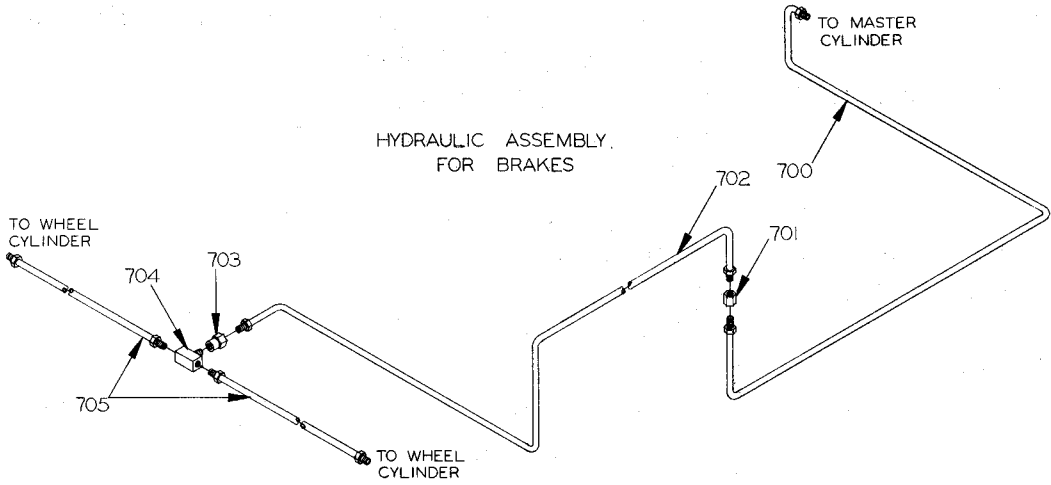


ITEM	PART NO.	QTY.	DESCRIPTION
500	479 600	1	PROPULSION PUMP
501		1	PIN, Spring 1/4 X 1 1/4 TSB 492, G-11
502		1	NUT, Hex 5/16-24 w/lkw
503		1	SCREW, Hex Hd. 5/16-18 X 2 1/4 w/lkw
504	481 612	1	LINK WELDMENT (Ford Model)
	481 416	1	LINK WELDMENT (Diesel Model)
505	363 685	4	ROD, End
506		2	PIN, Spring 3/16 X 1 1/4
507	370 878	2	BEARING, Sleeve
508	367 192	2	WASHER
509	367 354	2	COLLAR
510	481 614	1	ROD (Ford Model)
	481 220	1	ROD (Diesel Model)
511	477 686	2	LEVER
512		2	SCREW, Socket Set 5/16-18 X 1/4
513	477 671	1	SHAFT
514		2	SCREW, Hex Hd. 5/16-18 X 11/16 w/lkw & nut
515	449 958	1	MAT, Pedal
516	448 038	1	PEDAL WELDMENT
517	206 849	2	BEARING, Nyloner
518	448 050	1	PIN
519	321 125	2	RING, Retaining
520	481 222	1	ROD
521	477 659	1	BRACKET WELDMENT
522	481 702	1	ADJUSTING BOLT WELDMENT
523	324 505	4	BEARING, Flange .376
524		2	SCREW, 1/4-20 X 1 w/nut
525		2	WASHER, Flat 3/8
526		1	NUT, 3/8-16
527		2	SCREW, Hex Hd. 5/16-18 X 5/8 w/washer & lkw (Diesel only)
528	481 728	1	BRACKET WELDMENT (Diesel Only)
529	481 720	1	ENGINE SUPPORT WELDMENT (Ford Model Only)
530	481 708	1	NUT, Lock 3/8-16
531	481 706	1	STOP
532		2	SCREW, Hex Hd. 8-32 X 1/2 w/nut
533	481 704	1	SPRING
534	481 696	2	ARM WELDMENT
535	321 427	1	RING, Retaining
536	481 722	1	ACCELERATOR ADJUSTMENT ASSEMBLY (Ford Model)
	481 730	1	ACCELERATOR ADJUSTMENT ASSEMBLY (Diesel Model)
537	448 057	1	NUT
538	372 773	1	BEARING

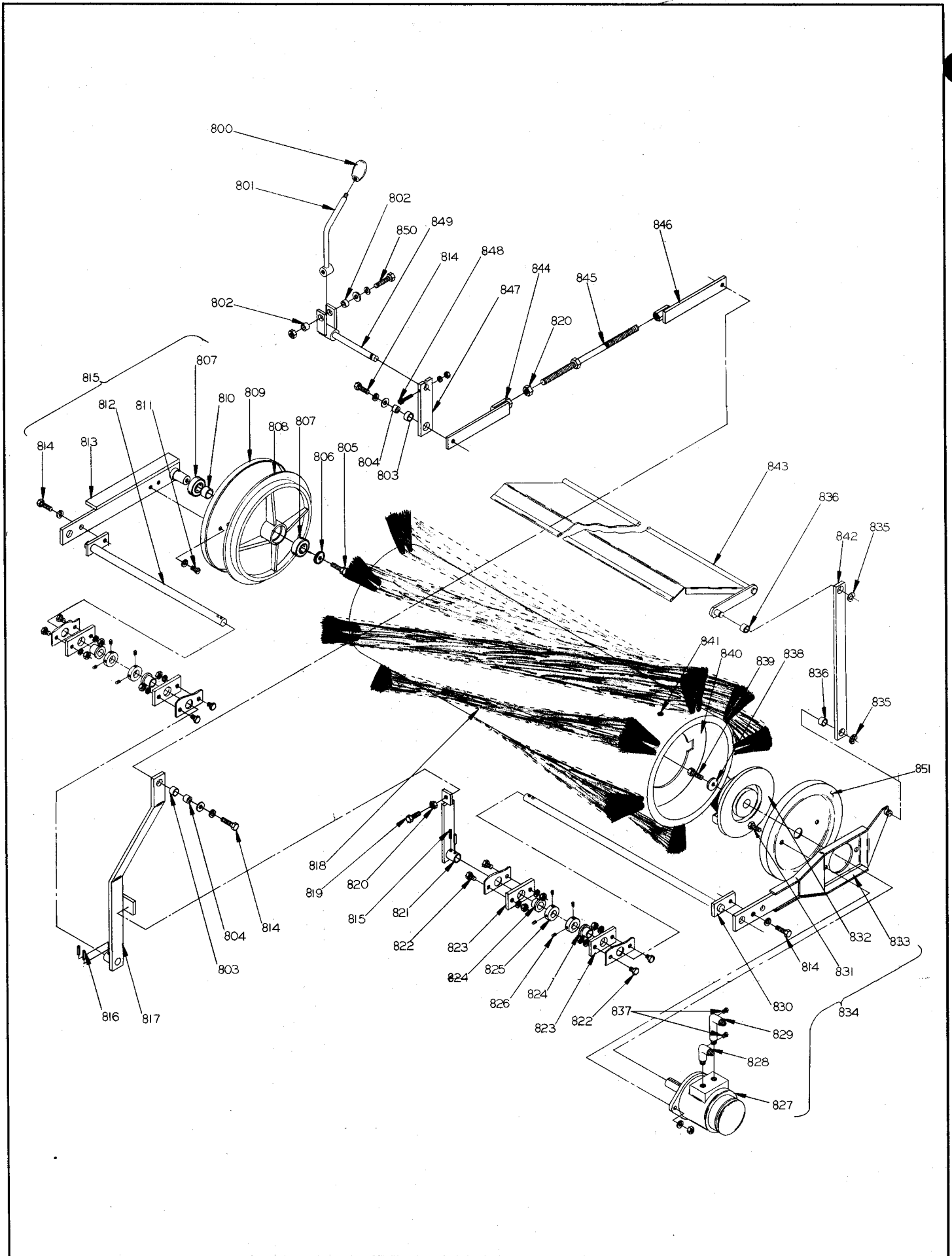


ITEM	PART NO.	QTY.	DESCRIPTION
600	449 774	1	CAP, Steering Wheel
601	016 754	1	DECAL, Advance
602	477 770	1	STEERING WHEEL
603	477 767	1	GEAR, Steering
604		4	SCREW, Hex Hd. 5/8-11 X 3
605	477 802	2	PLATE, Nut
606	110 817	1	NUT
607		1	WASHER, 7/8
608	477 781	1	BUSHING
609	171 081	1	SEAL, Shaft
610	158 143	1	BEARING, Cup
	158 151	1	BEARING, Cone
611	477 803	1	HOUSING
612	744 474	1	BEARING, Cup
	744 471	1	BEARING, Cone
613	477 783	1	SEAL, Shaft
614		2	PIN, Cotter 1/8 X 1 1/2
615	477 739	1	NUT, Slotted
616	101 656	1	WASHER
617	477 726	1	TIRE ASSEMBLY, Front
	448 145	1	TIRE, Front
	477 719	1	HUB, Front
618		2	SCREW, Socket Hd. Cap. 1/2-13 X 2 w/lkw & nut
619		5	SCREW, Hex Hd. 1/2-13 X 2 w/lkw & nut
620	477 791	1	SPINDLE WELDMENT
621	479 604	1	MOTOR, Drive
622	477 715	1	WHEEL ASSEMBLY, Front TSB 476, G-12
623	477 741	1	KEY
624	370 878	2	BEARING SLEEVE
625	477 804	1	LINKAGE, Steering
626	478 775	1	RING, Retaining
627	344 362	1	FITTING, Grease
628	477 794	1	CRANK WELDMENT
629	250 414	2	BUSHING
630	358 959	1	WASHER
631		1	SCREW, Hex Hd. 5/16-18 X 3/4
632	477 772	2	BALL JOINT
633	477 808	1	STUD
634	477 806	1	ARM, Steering
635		1	NUT, Hex 1/2-20
636		3	SCREW, Hex Hd. 7/16-14 X 1

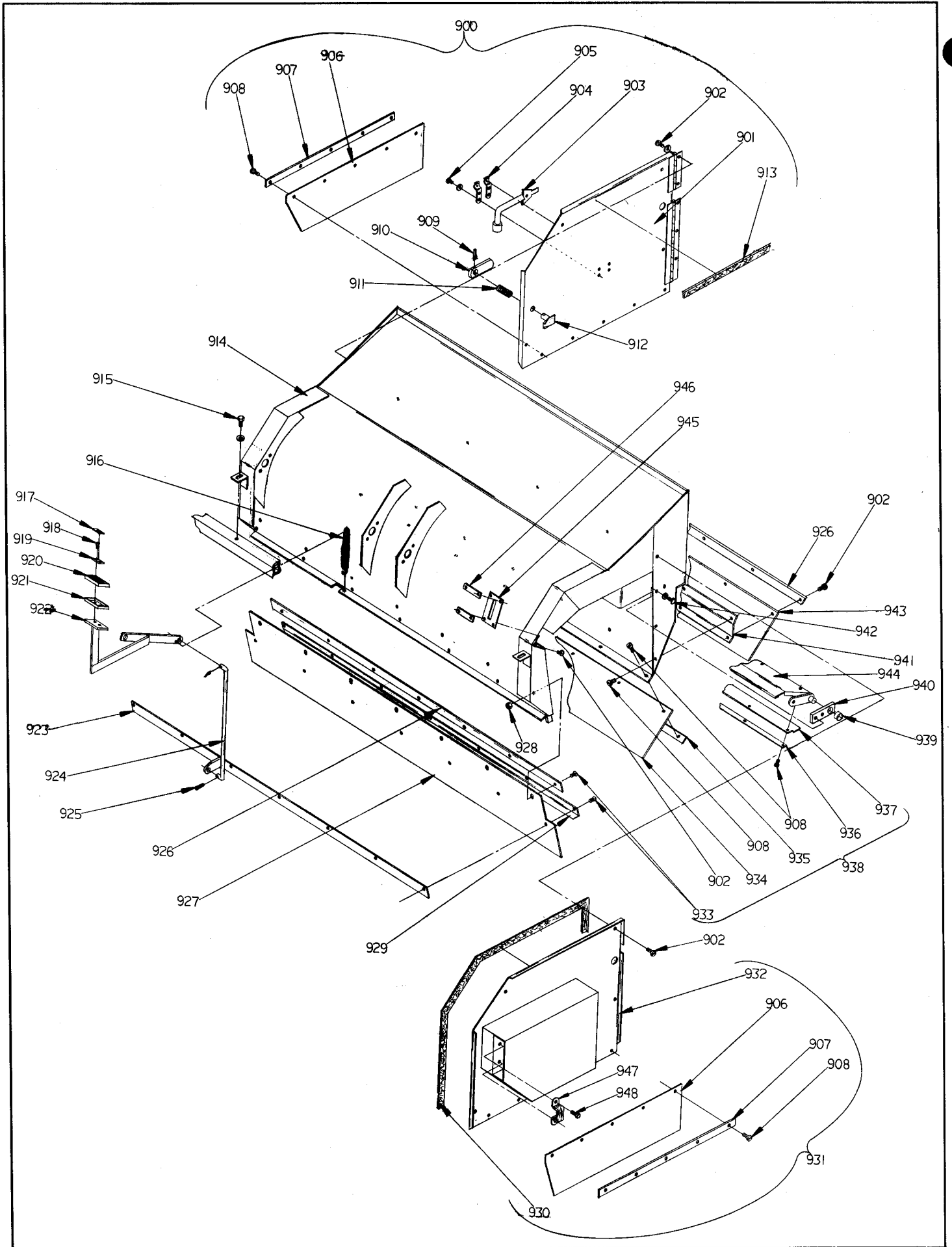
HYDRAULIC ASSEMBLY FOR BRAKES



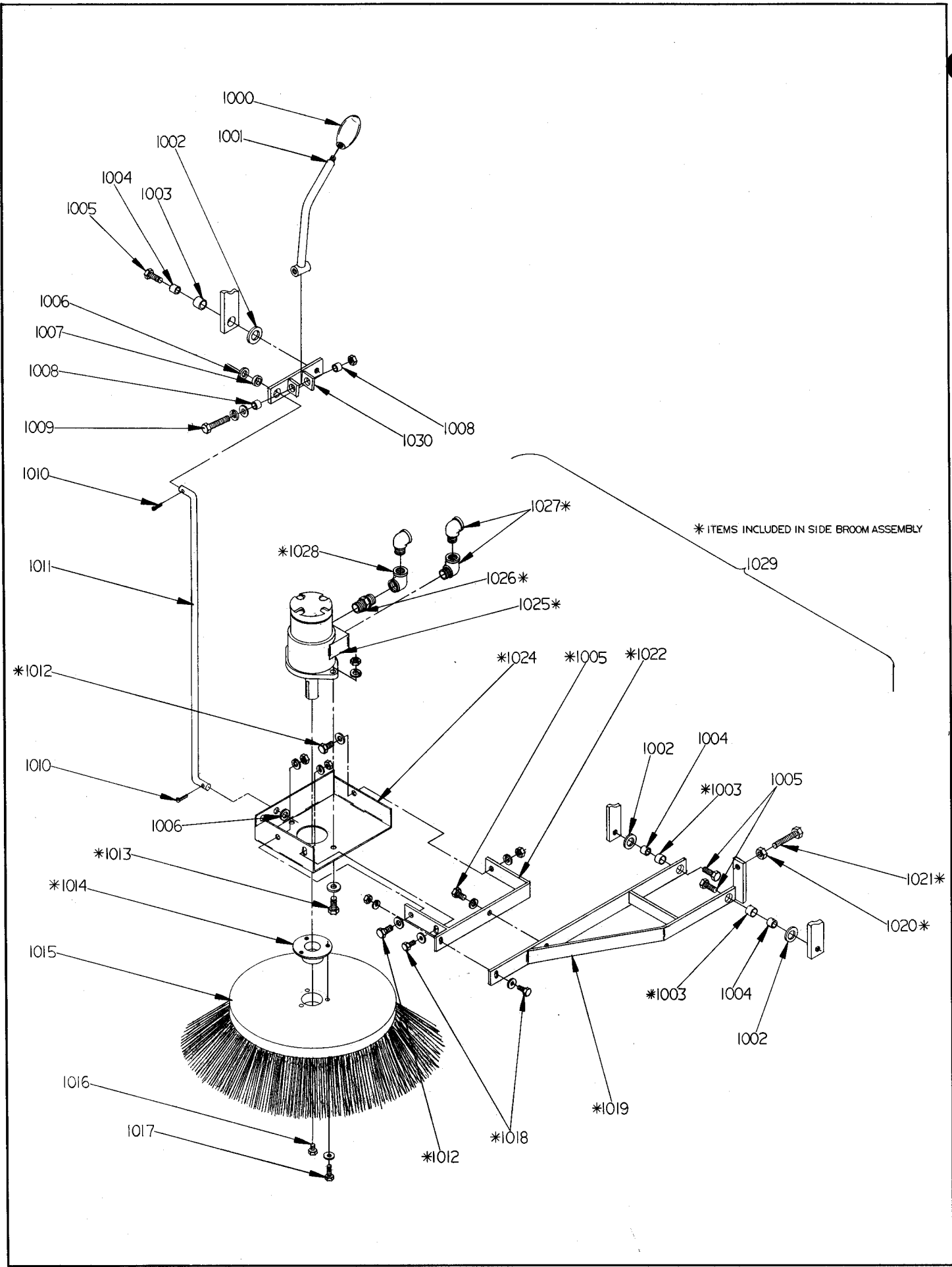
ITEM	PART NO.	QTY.	DESCRIPTION	ITEM	PART NO.	QTY.	DESCRIPTION
700	481 450	1	BRAKE LINE	748	477 917	1	LINKAGE
701	477 837	1	CONNECTOR	749	477 904	1	CHANNEL
702	480 374	1	TUBE ASSEMBLY	750		2	SCREW, Hex Hd. 1/2-13 X 1 1/2 w/washer & 2 nuts
703	477 831	1	CONNECTOR, Female	751		2	SCREW, Hex Hd. 1/4-20 X 1 w/nut, lkw & washer
704	477 832	1	CONNECTOR, Tee	752	370 355	1	SPRING
705	477 834	2	HOSE ASSEMBLY	753		3	SCREW, Hex Hd. 1/4-20 X 1 w/nut
706	448 200	1	LEVER ASSEMBLY, Brake	754	479 325	1	SHIELD
707		4	SCREW, Hex Hd. 5/16-18 X 3/4 w/lkw & nut	755		8	SCREW, Pan Hd. 1/4-20 X 1/2 w/lkw
708	385 356	1	BUSHING	756		2	SCREW, Hex Hd. 1/2-13 X 1 1/2 w/washer & lkw
709		5	SCREW, Hex Hd. 3/8-16 X 1/2 w/washer & lkw	757	367 192	2	WASHER
710	477 906	1	LEVER	758	448 112	1	SPRING
711		4	SCREW, Hex Hd. 1/4-20 X 7/8	759	367 206	2	BUSHING
712	477 884	2	CLAMP, Cable	760	367 168	2	BEARING
713	477 829	1	CABLE ASSEMBLY	761	481 336	1	LEVER, Brake Weldment
714	477 914	2	LEVER WELDMENT	762	477 828	1	MASTER CYLINDER
715		2	SCREW, Hex Hd. 1/4-20 X 3/4 w/lkw & nut	763		2	SCREW, Hex Hd. 3/8-16 X 1 w/nut
716		2	SCREW, Hex Hd. 1/2-13 X 1 w/washer	764	365 087	1	CUP, Pedal
717		2	PIN, Cotter 3/16 X 2	765	365 086	1	PAD, Rubber
718	101 265	2	NUT, Adjusting	766	365 081	1	PLATE, Pedal
719	477 729	2	BUSHING, Spacer	767		2	SCREW, Flat Hd. 1/4-20 X 1
720	477 724	4	SEAL	768	025 122	1	DECAL, Brake
721	378 259	4	BEARING, Cup	769	477 909	1	ROD WELDMENT
	378 267	4	BEARING, Cone	770	477 902	1	PIN
722	477 743	2	TIRE ASSEMBLY, Rear	771	321 427	2	RING, Retaining
	448 145	1	TIRE	772		2	SCREW, Hex Hd. 5/16-18 X 1 1/4 w/ 2 nuts
	477 716	1	HUB, Rear	773	477 903	2	STRAP
723	344 362	2	FITTING, Grease	774	101 656	2	WASHER
724	477 930	1	STATOR WELDMENT, Left (shown)				
	477 931	1	STATOR WELDMENT, Right				
725	477 727	1	AXLE				
726	477 735	1	WHEEL ASSEMBLY, Rear				
727	480 380	1	WHEEL CYLINDER, Left				
	480 378	1	WHEEL CYLINDER, Right				
728	480 394	1	SPRING, Shoe Return				
729	480 396	1	SPRING, Adjuster				
730	480 398	1	ADJUSTER ASSEMBLY				
731	477 838	2	SHOE ASSEMBLY, Brake (2 per wheel)				
732	480 400	1	PLUG, Hole				
733	480 388	1	PIN, Pivot				
734	480 382	1	LEVER, Pivot				
735	480 392	2	SNAP, Ring				
736	480 384	1	LEVER, Sliding Right				
737	480 386	1	LEVER, Sliding Left				
738	480 390	1	PIN, Guide				
739		2	SCREW, Hex Hd. Sems 1/4- 20 X 1/2				
740		4	SCREW, Hex Hd. 5/16-18 X 1 w/whiz nut				
741	478 195	2	STRAP				
742		4	SCREW, Hex Hd. 1/4-20 X 1 3/4 w/whiz nut				
743	477 905	2	STOP				
744	479 327	2	STRAP				
745	477 576	2	PLATE				
746		2	SCREW, Hex Hd. 1/4-20 X 3/4 w/washer & lkw				
747	379 298	4	BUSHING				



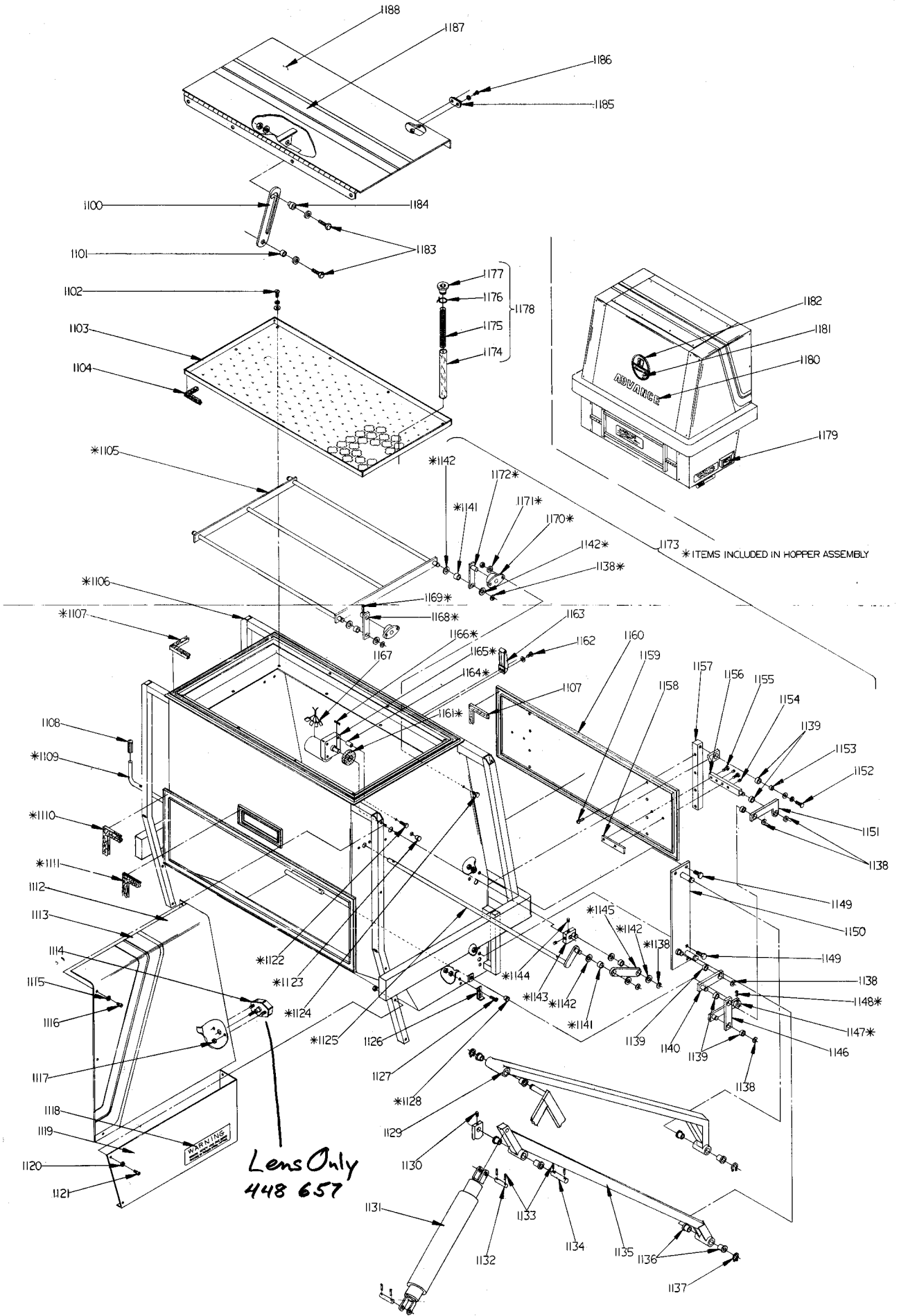
ITEM	PART NO.	QTY.	DESCRIPTION
800	364 527	1	KNOB
801	479 492	1	HANDLE WELDMENT
802	320 595	2	BUSHING
803	370 878	2	BEARING, Sleeve
804	360 627	2	BUSHING, Spacer
805		1	SCREW, Hex Hd. 5/16 - 18 X 3/4
806	358 959	1	WASHER
807	479 430	2	BEARING, Ball
808	477 760	1	HUB, Idler
809	479 439	1	GUARD, String
810	479 434	1	SPACER
811		2	SCREW, Pan Hd. 1/4-20 X 5/8 w/lkw
812	479 483	1	LEVER WELDMENT, Right
813	479 438	1	ARM WELDMENT, Right
814		4	SCREW, Hex Hd, 1/2-13 X 1 w/washer & lkw
815	479 428	1	IDLER ARM ASSEMBLY
816		4	PIN, Spring, 5/16 X 1 3/4
817	479 450	1	LEVER WELDMENT
818	477 734	1	MAIN BROOM, Med. Fill
	477 742	1	MAIN BROOM, Heavy Duty Med. Fill
	477 738	1	MAIN BROOM, Full Fill
	477 745	1	MAIN BROOM, Heavy Duty Full Fill
	477 748	1	MAIN BROOM, Wire Mix
	477 750	1	MAIN BROOM, Wire
819	479 513	1	SCREW, Adjusting
820		2	NUT, Hex 1/2-13 Jam
821	479 459	1	LEVER WELDMENT
822		8	SCREW, Hex Hd. 5/16-18 X 1 w/lkw, & Nut
823	479 273	4	PILLOW BLOCK
824	444 944	4	BEARING, FLANGED
825	444 820	4	COLLAR
826		8	SCREW, Socket Set 5/16-18 X 1/4
827	479 606	1	MOTOR, Main Broom
828	481 340	1	ELBOW, Male
829	481 342	1	ELBOW, Male
830	479 477	1	LEVER WELDMENT, Left
831		2	SCREW, Hex Hd. 1/2-13 X 1 1/4 w/lkw & nut
832	477 762	1	HUB, Driver
833	479 533	1	ARM WELDMENT, Left
834	479 535	1	BROOM ARM ASSEMBLY
835	478 775	2	RING, Retaining External
836	478 781	2	BEARING, Sleeve
837	481 546	2	PLUG
838	159 387	1	WASHER
839		1	SCREW, Hex Hd. 1/4-20 X 7/8
840	477 736	2	BROOM INSERT
841		16	SCREW, Pan Hd. S.T. 1/4-20 X 1 1/4
842	479 519	1	LINKAGE
843	479 237	1	PLATE WELDMENT
844	479 507	1	YOKE, Right Hand
845	479 525	1	TURNBUCKLE WELDMENT
846	479 501	1	YOKE, Left Hand
847	479 516	1	LEVER
848		1	SCREW, Socket Hd. Cap. 1/4-20 X 1 1/2 w/lkw & nut
849	479 468	1	CRANK WELDMENT
850		1	SCREW, Hex Hd. 5/16-18 X 1 3/4 w/washer, lkw, & nut
851	479 442	1	GUARD, String



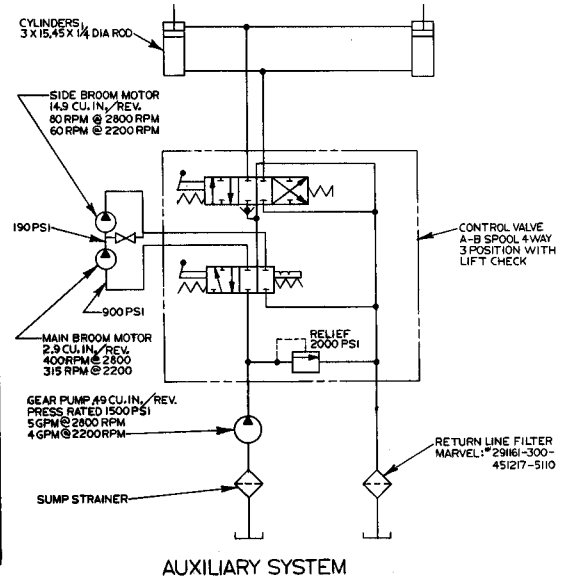
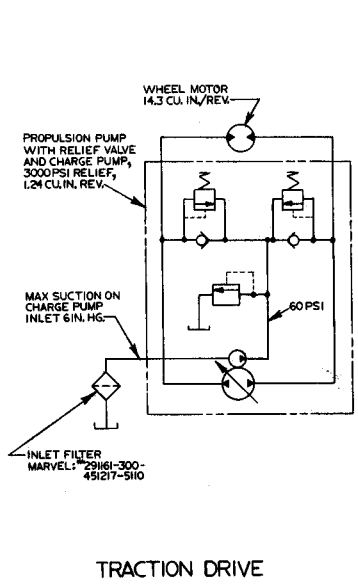
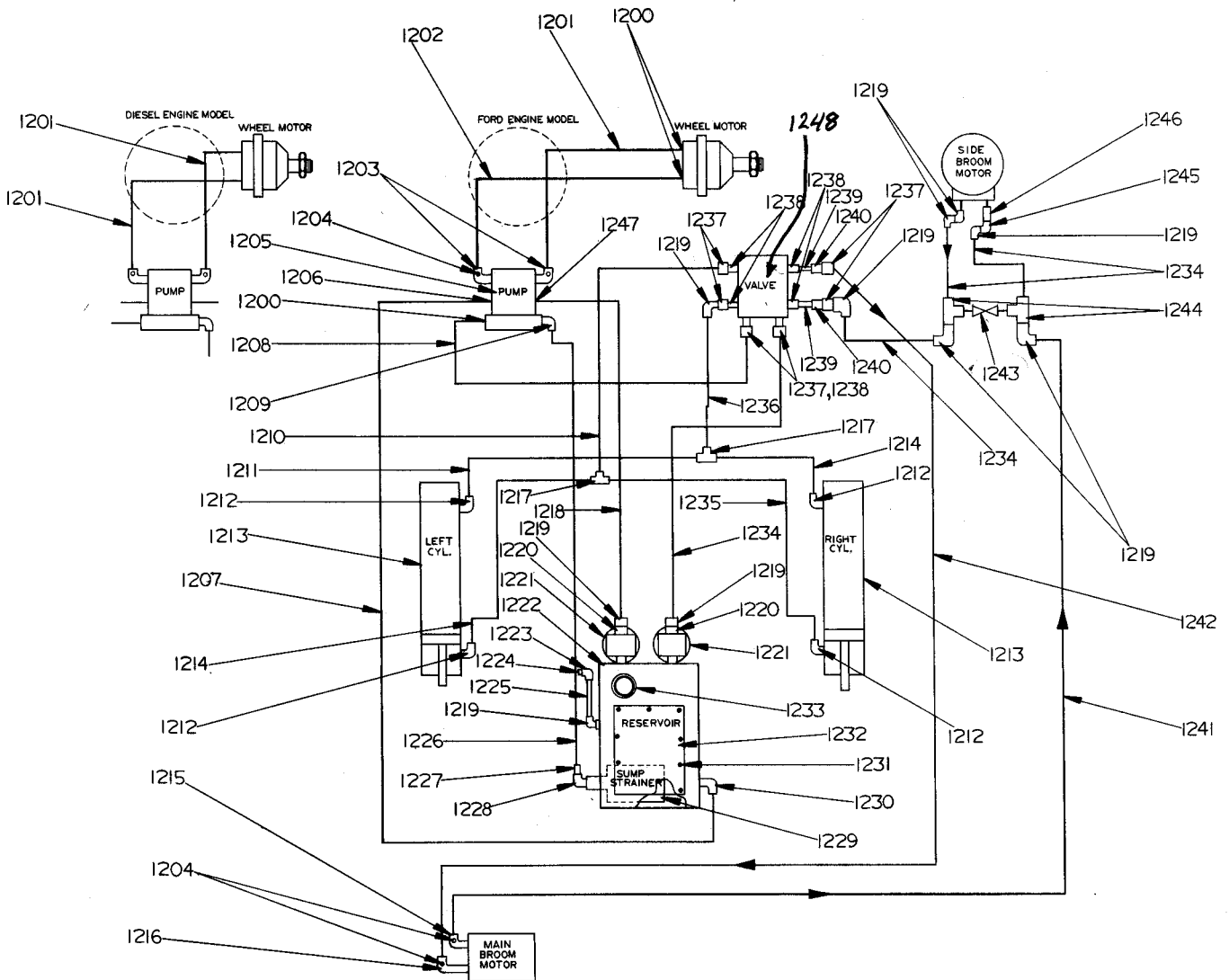
ITEM	PART NO.	QTY.	DESCRIPTION
900	479 851	1	PANEL ASSEMBLY
901	479 821	1	PANEL WELDMENT
902		27	SCREW, Pan Hd. #10-24 X 3/8 w/washer & lkw
903	477 598	1	TOOL WELDMENT (not included in Panel Assembly)
904	477 620	2	CLAMP
905		4	SCREW, Pan Hd. #10-24 X 1/4 w/lkw
906	479 314	2	SKIRT, Side
907	479 322	2	STRAP, Side
908		30	SCREW, Pan Hd. #10-24 X 3/8
909		1	PIN, Cotter 1/8 X 3/4
910	479 371	1	HANDLE
911	200 980	1	SPRING
912	479 377	1	LATCH
913	479 860	1	GASKET
914	479 261	1	HOUSING WELDMENT
915		2	SCREW, Hex Hd. 1/2-13 X 2 1/2 w/lkw & 2 washers (Front Side)
		2	SCREW, Hex Hd. 1/2-13 X 2 w/lkw & 2 washers (Rear Side)
916	371 114	1	SPRING
917	025 126	1	DECAL, Flap
918		2	SCREW, Flat Hd. 1/4-20 X 3/4
919	365 081	1	PLATE
920	365 082	1	PAD, Rubber
921	365 083	1	CUP, Pedal
922	479 309	1	LEVER WELDMENT
923	479 223	1	MOUNT WELDMENT, Skirt
924	479 276	1	ROD
925		2	PIN, Cotter 1/16 X 3/4
926	479 285	2	STRAP
927	479 318	1	SKIRT, Front
928		7	NUT, Hex #10-24
929	479 220	1	PLATE
930	479 864	1	GASKET
931	479 962	1	PANEL ASSEMBLY
932	479 961	1	PANEL WELDMENT
933		14	SCREW, Flat Hd. #10-24 X 1/2
934	479 316	1	SKIRT, Rear
935	479 288	1	STRAP
936	479 291	1	STRAP
937	479 320	1	GUARD
938	479 330	1	HOUSING ASSEMBLY, Broom
939	370 878	2	BUSHING
940	479 267	2	PILLOW BLOCK
941	479 279	1	PLATE
942		4	SCREW, Hex Hd. 5/16-18 X 5/8 w/lkw
943	479 317	1	SKIRT, Rear
944	479 237	1	PLATE WELDMENT
945	477 572	2	SHIELD
946	477 570	4	PLATE, Nut
947	477 511	1	CLAMP
948		2	SCREW, Hex Hd. 1/4-20 X 3/8 w/whiz nut



ITEM	PART NO.	QTY.	DESCRIPTION
1000	364 527	1	KNOB
1001	479 927	1	LEVER WELDMENT
1002	367 192	3	WASHER
1003	367 168	3	BEARING, Sleeve
1004	367 206	3	BUSHING
1005		4	SCREW, Hex Hd. 1/2-13 X 1 w/lkw
1006		2	WASHER, Flat 1/2
1007	481 456	1	BUSHING
1008	320 595	2	BUSHING
1009		1	SCREW, Hex Hd. 5/16-18 X 1 3/4 w/washer, lkw & nut
1010		2	PIN, Cotter 1/16 X 1
1011	481 454	1	ROD, Side Broom
1012		2	SCREW, Hex Hd. 1/2-13 X 1 w/washer, lkw & nut
1013		2	SCREW, Hex Hd. 1/2-13 X 1 3/8 w/washer, lkw & nut
1014	479 948	1	HUB WELDMENT
1015	477 732	1	BROOM, Side
1016		1	SCREW, Hex Hd. 1/4-20 X 5/8 w/lkw
1017		3	SCREW, Hex Hd. 5/16-18 X 1 1/4 w/washer
1018		2	SCREW, Hex Hd. 3/8-16 X 1 3/8 w/washer, lkw & nut
1019	479 867	1	BRACKET WELDMENT
1020		1	NUT, Hex Jam 1/2-13
1021	479 513	1	SCREW, Adjusting
1022	479 903	1	BRACKET WELDMENT
1024	479 945	1	BRACKET
1025	479 609	1	MOTOR, Side Broom
1026	479 769	1	PIPE NIPPLE
1027	479 690	3	ELBOW, Street
1028	479 771	1	ELBOW, Street
1029	479 950	1	SIDE BROOM ASSEMBLY
1030	479 936	1	LEVER WELDMENT



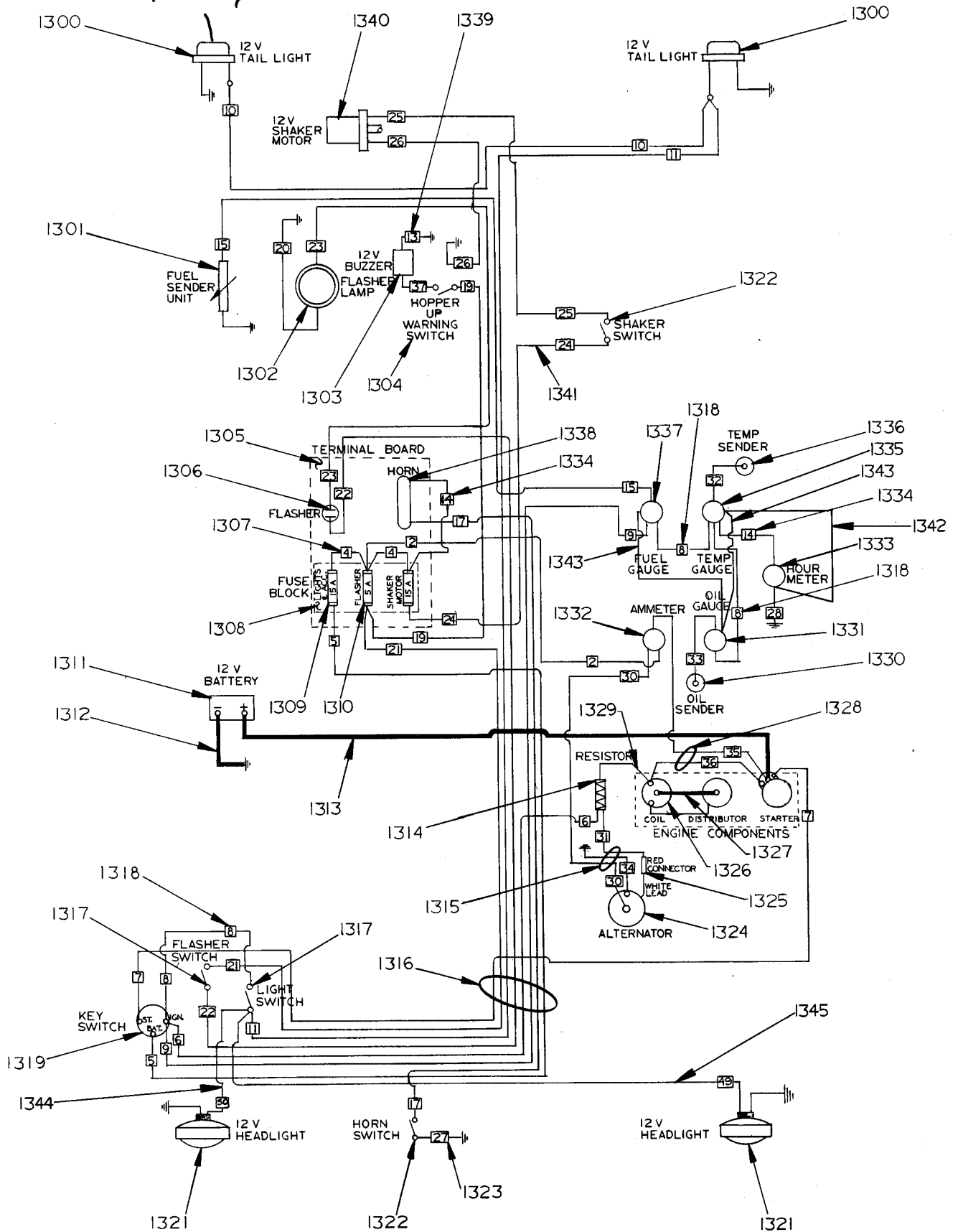
ITEM	PART NO.	QTY.	DESCRIPTION	ITEM	PART NO.	QTY.	DESCRIPTION
1100	449 262	1	LATCH	1140	478 934	2	LEVER WELDMENT
1101	206 784	1	BUSHING	1141	478 781	6	BEARING, Sleeve
1102		10	SCREW, Pan Hd. #10-24 X 1/2 w/washer & shake- proof lkw	1142	159 530	12	WASHER, Thrust
1103	478 973	1	PANEL, Filter Mount	1143	479 006	1	CAM WELDMENT
1104	478 980	1	GASKET	1144		2	SCREW, Socket Set #10-24 X 3/8
1105	478 991	1	SHAKER WELDMENT	1145	479 027	1	STRAP
1106	479 036	1	HOPPER WELDMENT	1146	478 931	2	LEVER
1107	478 969	2	GASKET	1147	478 943	2	LEVER WELDMENT
1108	151 270	1	GRIP, Handle	1148		2	PIN, Roll 1/4 X 1 1/4
1109	479 045	1	LEVER	1149		8	SCREW, Hex Hd. 5/8-11 X 1 1/4 w/lkw & nut
1110	478 782	1	GASKET	1150	478 910	1	PLATE WELDMENT, Left
1111	478 872	1	GASKET		478 913	1	PLATE WELDMENT, Right
1112	479 787	1	PANEL WELDMENT, Left	1151	478 922	2	LINKAGE WELDMENT
	479 789	1	PANEL WELDMENT, Right	1152		2	SCREW, Hex Hd. 1/2-13 X 1 w/washer & lkw
1113	025 115	1	DECAL, Stripe Left	1153	360 627	2	BUSHING, Spacer
	025 112	1	DECAL, Stripe Right	1154	478 963	4	SET SCREW
1114	448 656	2	TAIL LIGHT	1155		4	SCREW, Hex Hd. 1/2-13 X 1 1/2
1115	449 340	12	WASHER, Finishing	1156	478 961	2	BLOCK, Pivot
1116		12	SCREW, Oval Hd. #10-24 X 5/8	1157	478 964	2	PLATE, Hinge
1117		4	NUT, Hex #10-32	1158	478 958	2	PLATE, Nut
1118	025 100	3	DECAL, Warning	1159		8	SCREW, Rd. Hd. 1/4-20 X 5/8 w/lkw
1119	479 791	1	PANEL, Left				
	479 844	1	PANEL, Right				
1120		8	WASHER, Finishing 1/4				
1121		8	SCREW, Oval Hd. 1/4-20 X 1 1/2 w/nut	1160	481 596	1	DOOR, Hopper Assembly
1122		4	SCREW, Hex Hd. 5/16-18 X 3 1/2 w/washer, lkw & nut	1161	479 030	1	GASKET
1123	320 317	1	BUSHING	1162		2	SCREW, Pan Hd. 6-32 X 3/8 w/shakeproof lkw
1124		8	SCREW, Hex Hd. 1/4-20 X 1 w/lkw & nut	1163	471 194	2	LATCH ASSEMBLY
1125	479 015	1	PIVOT WELDMENT	1164	398 618	4	BUSHING
1126	478 976	2	LATCH, Stop	1165	478 487	1	GEAR MOTOR, 12 Volt
1127		4	SCREW, Pan Hd. 5/16-18 X 1 w/2 nuts	1166	441 279	1	KEY, Square 3/16
1128	250 414	2	BUSHING, Flange	1167	478 536	1	BRUSH SET MOTOR
1129	479 057	1	ARM WELDMENT, Left	1168	479 024	2	LEVER WELDMENT
	479 060	1	ARM WELDMENT, Right	1169		2	PIN, Roll 3/16 X 1
1130		2	SCREW, Socket Set 1/4-20 X 1/4	1170	479 033	4	BEARING, Pillow Block
1131	479 646	2	CYLINDER, Hopper	1171	151 114	8	WASHER
	479 687	1	CYLINDER REPAIR KIT, Colum- bus (Painted Black prim- er w/welded clevis at rod end.)	1172	479 000	2	LEVER WELDMENT
	479 675	1	CYLINDER REPAIR KIT, Ces- sna (Painted black w/cast clevises.)	1173	479 040	1	HOPPER ASSEMBLY
	479 677	1	CYLINDER REPAIR KIT, Green Co. (Painted black w/date & code no. stamped on clevis at head end.)	1174	477 154	1	FILTER TUBE
			FOR CYLINDERS BEFORE 11/82 AFTER 11/82 USE 479 703	1175	471 095	1	SPRING
1132	477 581	4	PIN	1176	471 089	1	WIRE, Tie
1133	477 588	12	PIN, Cotter	1177	471 098	1	GROMMET
1134	477 574	2	PIN	1178	471 122	166	FILTER TUBE ASSEMBLY
1135	479 090	1	ARM WELDMENT, Left	1179	025 130	1	DECAL, Open
	479 093	1	ARM WELDMENT, Right	1180	016 543	1	DECAL, Advance
1136	444 944	16	BEARING, Sleeve	1181	025 082	1	DECAL, Retriever 56
1137	478 778	6	RING, Retaining	1182	024 958	1	EMBLEM, Advance
1138	478 775	14	RING, Retaining	1183		2	SCREW, Hex Hd. 1/4-20 X 7/8 w/2 washers & nut
1139	370 878	12	BEARING, Sleeve	1184	384 708	1	BUSHING, Step
				1185	342 564	2	PLATE
				1186		4	SCREW, Pan Hd. 6-32 X 3/8 w/shakeproof lkw & nut
				1187	025 134	1	DECAL, Stripe
				1188	481 578	1	COVER WELDMENT



ITEM	PART NO.	QTY.	DESCRIPTION
1200	479 764	3	O-RING
1201	480 901	1	HOSE ASSEMBLY
1202	480 899	1	HOSE ASSEMBLY, (Ford Model)
1203	481 344	2	ELBOW, Male
1204	481 546	4	PLUG
1205	479 600	1	PROPULSION PUMP
1206	479 762	1	O-RING
1207	479 686	1	HOSE ASSEMBLY, (2 on Diesel)
1208	479 664	1	HOSE ASSEMBLY
1209	479 700	1	ELBOW, Male
1210	479 682	1	HOSE ASSEMBLY
1211	479 676	1	HOSE ASSEMBLY
1212	479 704	4	ELBOW
1213	479 646	2	CYLINDER, Hydraulic
1214	479 680	2	HOSE ASSEMBLY
1215	481 340	1	ELBOW, Male
1216	481 342	1	ELBOW, Male
1217	479 694	2	TEE, Male
1218	479 662	1	HOSE ASSEMBLY'
1219	479 690	10	ELBOW
1220	479 692	2	REDUCER
1221	449 842	2	FILTER ASSEMBLY
	449 843	1	CARTRIDGE, Filter
1222	479 626	1	RESERVOIR ASSEMBLY
1223	443 751	1	ELBOW
1224	479 732	1	PLUG
1225	479 665	1	NIPPLE, Pipe
1226	479 684	1	HOSE ASSEMBLY
1227	479 710	1	REDUCER
1228	479 716	1	ELBOW
1229	479 654	1	STRAINER
1230	479 708	1	ELBOW
1231		10	SCREW, Pan Hd. 10-24 X 1/2 w/1kw
1232	479 659	1	COVER
1233	479 656	1	CAP, Filler
1234	479 666	4	HOSE ASSEMBLY
1235	479 678	1	HOSE ASSEMBLY
1236	479 668	1	HOSE ASSEMBLY
1237	479 724	6	CONNECTOR, Reducing
1238	479 696	6	ADAPTER
1239	479 728	2	NIPPLE 1/4
1240	479 726	2	COUPLER
1241	479 672	1	HOSE ASSEMBLY
1242	479 670	1	HOSE ASSEMBLY
1243	479 954	1	VALVE, 2-way, Handle Only - 479 955
	479 956	1	VALVE ASSEMBLY
1244	479 770	2	TEE
1245	479 771	1	ELBOW
1246	479 769	1	NIPPLE
1247	479 766	1	O-RING
1248	479 612	1	Valve Only
	479 611	1	Valve Assembly

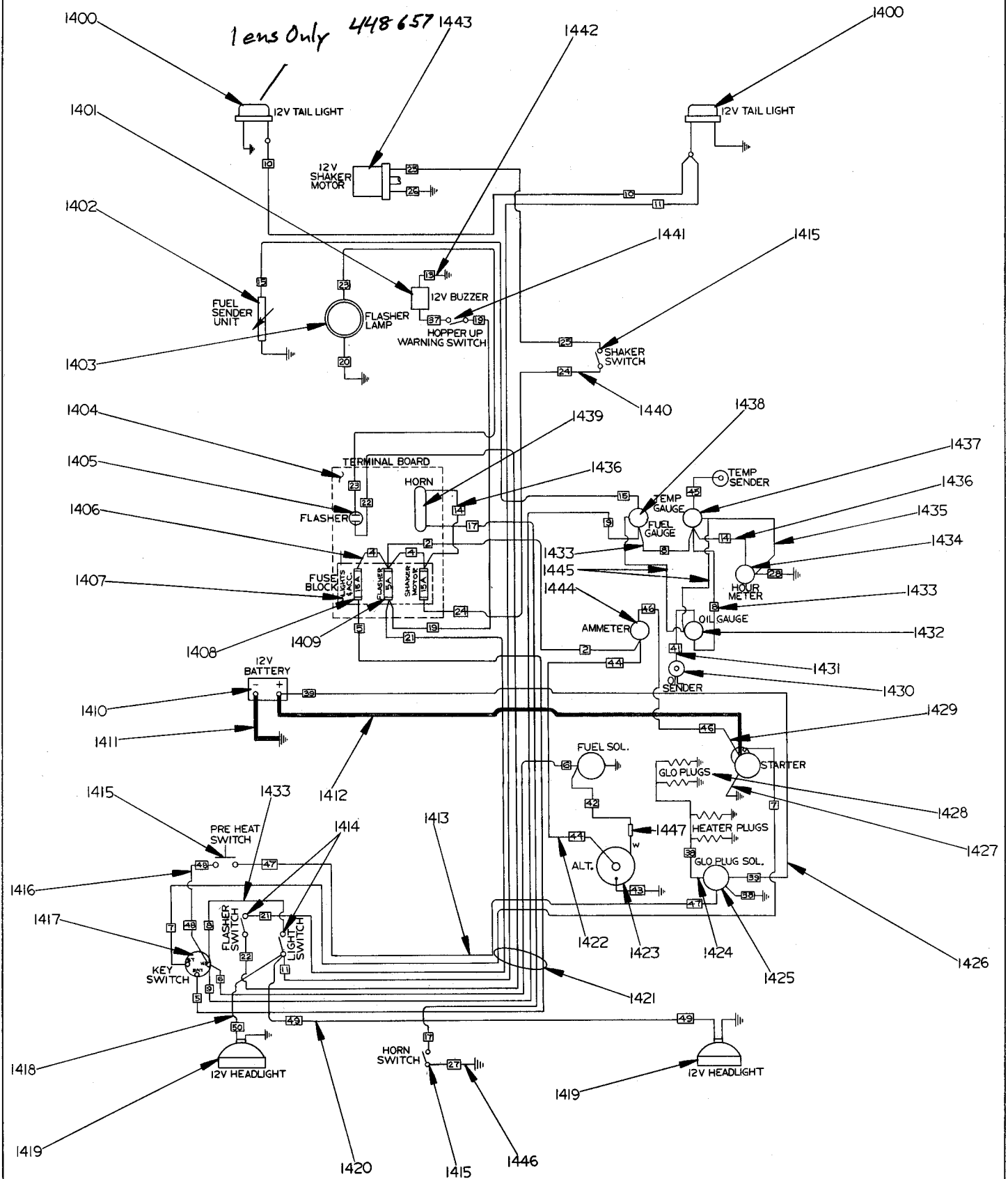
ELECTRICAL SCHEMATIC — FORD ENGINE MODEL

lens Only 448 657

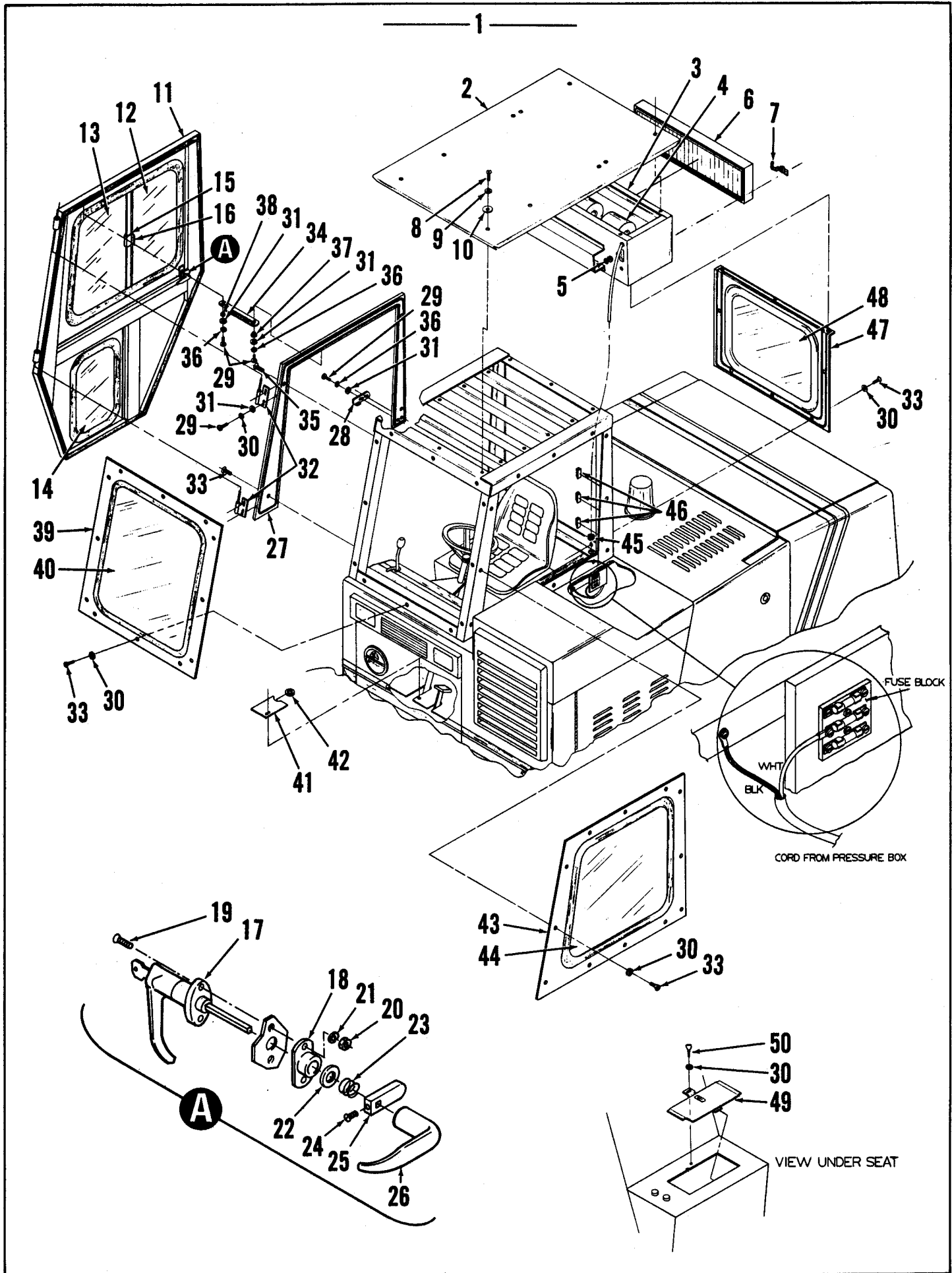


ITEM	PART NO.	QTY.	DESCRIPTION
1300	448 656	2	TAIL LIGHT, 12 Volt
1301	478 358	1	SENDING UNIT, Fuel
1302	448 660	1	WARNING LIGHT
1303	479 035	1	BUZZER, 12 Volt
		3	SCREW, Pan Hd. 1/4-20 X 1/2 w/lkw & nut
1304	171 225	1	SWITCH, Hopper Warning
1305	478 273	1	TERMINAL BOARD
1306	448 668	1	FLASHER, Warning
	478 275	1	CLIP, Flasher
1307	478 261	2	WIRE ASSEMBLY # 4
1308	441 961	1	BLOCK, Fuse
1309	478 271	2	FUSE, 15 Amp
1310	478 269	1	FUSE, 5 Amp
1311	441 511	1	BATTERY, 12 Volt
1312	478 267	1	CABLE, Battery
1313	478 265	1	CABLE, Battery
1314	480 699	1	RESISTOR, Coil
1315	480 599	1	HARNESS ASSEMBLY, (includes #30, 31, 32, 33, & 34)
1316	478 245	1	HARNESS ASSEMBLY
1317	207 075	2	SWITCH, Toggle
1318	478 249	3	WIRE ASSEMBLY # 8
1319	478 640	1	SWITCH, Key
1321	481 556	2	HEADLIGHT
1322	441 555	2	SWITCH, Horn/Shaker
1323	478 259	1	WIRE ASSEMBLY # 27
1324	478 483	1	ALTERNATOR
1325	441 899	1	BULLET CONNECTOR
1326	480 691	1	COIL ASSEMBLY
1327	480 695	1	WIRE, High Tension
1328	480 601	1	HARNESS ASSEMBLY, (includes # 35 & 36)
1329	480 697	1	WIRE ASSEMBLY
1330	478 698	1	SENDER, Oil Pressure
1331	478 701	1	GAUGE, Oil Pressure
1332	478 704	1	AMMETER
1333	478 361	1	HOUR METER
1334	478 247	2	WIRE ASSEMBLY # 14
1335	478 707	1	GAUGE, Temperature
1336	478 695	1	SENDER, Temperature
1337	478 355	1	GAUGE, Fuel
1338	442 054	1	HORN, 12 Volt
1339	478 280	1	WIRE ASSEMBLY # 13
1340	478 487	1	MOTOR, 12 Volt D.C.
1341	478 243	1	WIRE ASSEMBLY # 24
1342	478 708	1	WIRE ASSEMBLY
1343	364 214	2	WIRE ASSEMBLY
1344	481 566	1	WIRE ASSEMBLY, Headlight
1345	481 564	1	WIRE ASSEMBLY, Headlight

ELECTRICAL SCHEMATIC—DIESEL ENGINE MODEL



ITEM	PART NO.	QTY.	DESCRIPTION
1400	448 656	2	TAIL LIGHT, 12 Volt
1401	479 035	1	BUZZER, 12 Volt
1402	478 358	1	SENDING UNIT, Fuel
1403	448 660	1	WARNING LIGHT
1404	478 273	1	TERMINAL BOARD
1405	448 668	1	FLASHER, Warning
	478 275	1	CLIP, Flasher
1406	478 261	2	WIRE ASSEMBLY, # 4
1407	441 961	1	BLOCK, Fuse
1408	478 271	2	FUSE, 15 Amp
1409	478 269	1	FUSE, 5 Amp
1410	206 962	1	BATTERY, 12 Volt
1411	478 267	1	CABLE, Battery
1412	478 265	1	CABLE, Battery
1413	481 508	1	WIRE ASSEMBLY # 47
1414	207 075	2	SWITCH, Toggle
1415	441 555	3	SWITCH
1416	481 510	1	WIRE ASSEMBLY # 48
1417	478 640	1	SWITCH, Key
1418	481 566	1	WIRE ASSEMBLY, Headlight
1419	481 556	2	HEADLIGHT
1420	481 564	1	WIRE ASSEMBLY, Headlight
1421	478 245	1	HARNESS ASSEMBLY
1422	481 512	1	HARNESS ASSEMBLY (includes wires #42, 43, 44, & 45)
1423	478 483	1	ALTERNATOR
1424	481 496	2	WIRE ASSEMBLY #38
1425	441 546	1	SWITCH, Solenoid
1426	481 498	1	WIRE ASSEMBLY # 39
1427	481 500	1	CABLE ASSEMBLY
1428	481 221	2	GLO-PLUG 12V
1429	481 504	1	WIRE ASSEMBLY, # 46
1430	478 698	1	SENDER, Oil Pressure
1431	481 506	1	WIRE ASSEMBLY, # 41
1432	478 701	1	GAUGE, Oil Pressure
1433	478 249	3	WIRE ASSEMBLY, # 8
1434	478 361	1	HOUR METER
1435	478 708	1	WIRE ASSEMBLY
1436	478 247	2	WIRE ASSEMBLY, # 14
1437	478 707	1	GAUGE, Temperature
1438	478 355	1	GAUGE, Fuel
1439	442 054	1	HORN, 12 Volt
1440	478 243	1	WIRE ASSEMBLY, # 24
1441	171 225	1	SWITCH, Hopper Warning
1442	478 280	1	WIRE ASSEMBLY, # 13
1443	478 487	1	MOTOR, 12 Volt D.C.
1444	478 704	1	AMMETER
1445	364 214	2	WIRE ASSEMBLY
1446	478 259	1	WIRE ASSEMBLY, # 27
1447	441 899	1	RECEPTACLE PLUG
	441 880	1	TERMINAL PLUG



ITEM	PART NO.	QTY.	DESCRIPTION
1	481 808	1	CAB (Includes Items 1 thru 50)
2	481 828	1	ROOF ASSEMBLY
3	481 789	1	PRESSURE BOX ASSEMBLY (Includes Items 3 thru 7)
4	481 794	1	BLOWER 12V
5	481 854	1	SWITCH, 3 Speed
6	481 838	1	FILTER ASSEMBLY, <i>Filter Only 481 814</i>
7	481 836	2	FASTNER, Snap
8		12	SCREW, Truss Hd. 1/4-20 X 1
9	151 114	10	WASHER, .265 X .90 X .06
10	154 776	10	WASHER
11	481 787	1	DOOR ASSEMBLY (Includes Items 9 thru 26)
12	481 670	1	WINDOW, Sliding Door
13	481 668	1	WINDOW, Fixed Door
14	481 666	1	WINDOW, Door
15	481 747	1.5"	GASKET, Handle
16	481 746	1	HANDLE, Locking
17	481 872	1	HANDLE, Locking
18	481 866	1	PLATE
19		2	SCREW, 10-24 X .75 Oval Hd.
20		2	NUT, Hex 10-24
21		2	LOCKWASHER, #10
22		1	WASHER, 7/16
23	481 880	1	SPRING, .60 X 625
24		1	SCREW, 10-24 X .38 Round Hd.
25	481 868	1	LATCH, Adjustable
26	481 874	1	HANDLE
27	481 793	1	DOOR FRAME ASSEMBLY
28	481 876	1	LATCH, Weldment
29		6	SCREW, Pan Hd. 1/4-20 X .50
30	481 830	32	WASHER .25
31		10	WASHER .25
32	481 739	2	HINGE, Weldment
33		32	SCREW, Oval Hd. 1/4-20 X .75
34	481 878	1	LATCH
35		4	SCREW, Flat Hd. 1/4-20 X 1.25
36		8	LOCKWASHER, .25
37	384 708	1	BUSHING, Step
38	206 784	1	BUSHING
39	481 805	1	FRONT WINDOW ASSEMBLY (Includes Item 40)
40	481 664	1	WINDOW, Front
41	481 832	1	COVER ASSEMBLY
42	344 621	1	GROMMET
43	481 803	1	LEFT WINDOW ASSEMBLY (Includes Item 44)
44	481 660	1	WINDOW, Left
45	327 409	1	BUSHING, Nylon
46	467 428	3	U-CLIP
47	481 811	1	REAR WINDOW ASSEMBLY (Includes Item 48)
48	481 662	1	WINDOW, Rear
49	481 834	1	BATTERY COVER ASSEMBLY
50	481 858	1	SCREW, Thumb 10-24 X .50