



Electronic Service Manuals

This electronic document is provided as a service to our customers. We do not create the contents of the information contained in this document. Should you have detailed questions pertaining to the information contained in this document, you may contact Michco, or the manufacturer which provided the original information in this electronic deliverable. Michco's only part in this electronic deliverable was the electronic assembly process.

You may contact Michco through the following methods:
Phone (517) 484-9312 or (800) 331-3339 MI, OH, IN only
2011 N. High St. -- Lansing, Michigan -- 48906
Fax: (517) 484-9836
Email: CustServ@Michco.com
Web site: www.Michco.Com
Parts Web site: www.FloorMachineParts.Com

Order Parts on Line at:
www.FloorMachineParts.Com

Directly to Parts & Service:
By Email: **Shop@Michco.com**
By Fax: (517) 702-2041
By Voice: Use numbers above.

Serving the Cleaning Industry Since 1922

Notice: All copyrighted material remains property of original owners, all trademarks are property of respective owners. Manuals are subject to Manufacturer's reproduction limitations. Originals or reproductions were provided by manufacturers through a request. We make no warranty as to the correctness of information provided in this document and you assume all risk.

PARTS LIST

RETRIEVER

**MODEL: 5600 G
5600 D**

SERIAL No. 946 054

FORM No. 042 093

JULY 1983



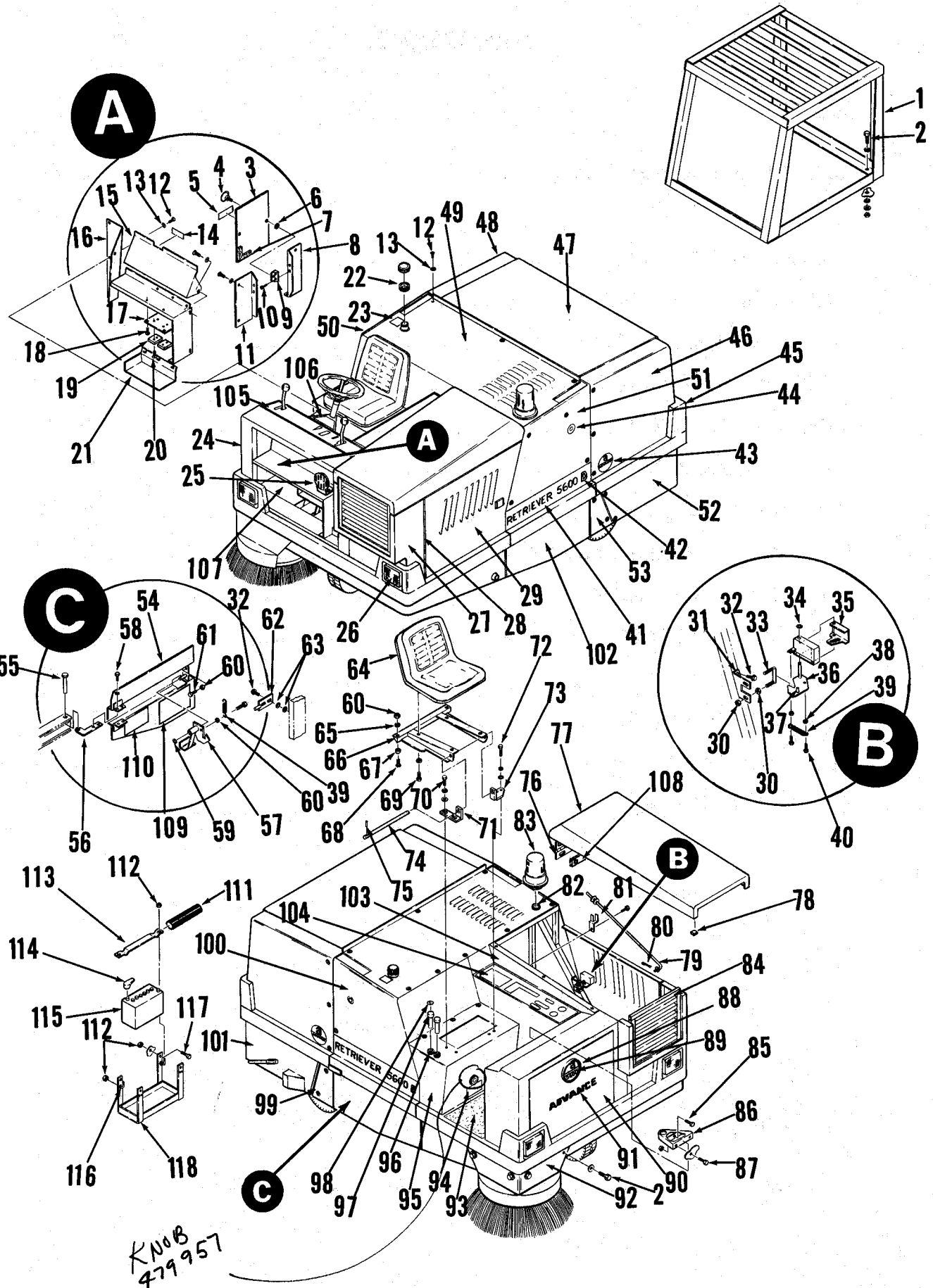
**ADVANCE
MACHINE COMPANY**

INTERNATIONAL HEADQUARTERS, Spring Park, Minnesota 55384 USA
EUROPE, 4 Rue Jean Engling, L - 1466 Luxembourg
CANADA, 1295 Crestlawn Drive, Mississauga, Ontario L4W 1A9



INDEX FOR FORM NUMBER 042093

Description	Location	Page
Broom, Main	B9	17
Broom, Side	B11	19
Drive Pedal Linkage	A12	7
Dust Control Filters & Hopper	B13	21
Dust Control Impeller	B1	9
Enclosed Cab	C5	27
Engine, Diesel	A10	5
Engine, Ford	A8	3
Hydraulic Diagram	C1	23
Outer Body	A6	1
Skirts & Broom Housing	B7	15
Wheel, Front Drive	B3	11
Wheels, Rear & Brakes	B5	13
Wiring Diagram, Diesel	C4	26
Wiring Diagram, Gas	C3	25

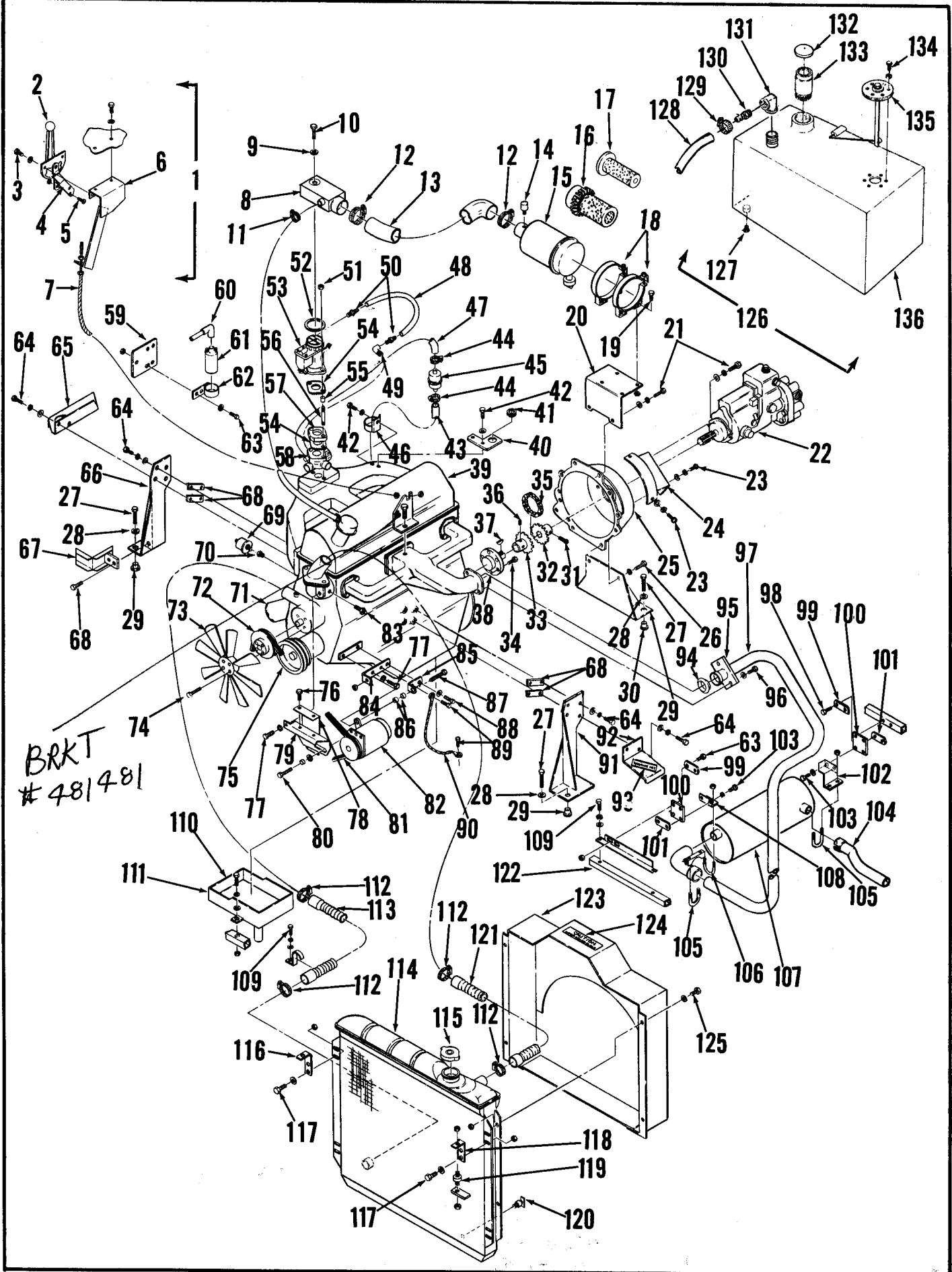


HOUSING ASSEMBLY

ITEM	PART NO	QTY	DESCRIPTION	ITEM	PART NO	QTY	DESCRIPTION
1	481 425	1	GUARD, OVERHEAD	85		1	SCREW, HEX HD. 5/16-18 X 3/4 W/NUT
2		8	SCREW, HEX HD. 1/2 - 13 X 1" W/LW & FW	86	481 417	1	PLATE, STEERING COLUMN
3	480 944	1	PANEL, ACCESS	87		1	SCREW, HEX HD. 1/4 - 20 X 3/4 W/NUT
4	448 104	2	SCREW, FASTENER	88	024 958	2	DECAL, ADVANCE EMBLEM
5	025 360	1	DECAL, CAUTION	89	025 526	2	DECAL, ADVANCE INSERT "5600G"
6	448 108	2	WASHER, RETAINING		025 520	2	DECAL, ADVANCE INSERT "5600D"
7	481 680	1	GASKET 1/8 X 3/4 X 68	90	481 465	1	PANEL, FRONT
8	480 935	1	PANEL	91	016 543	2	DECAL, "ADVANCE"
9	448 109	2	PLATE, MOUNTING	92	481 427	1	GUARD, SIDE BROOM
10		4	SCREW, PAN HD #8-32 X 5/16	93	481 514	1	MAT, FLOOR
11	480 938	1	PANEL	94	025 105	1	DECAL, SIDE BROOM
12		90	SCREW, OVAL HD. #10-24 X 1/2	95	481 423	1	PANEL, SEAT
13	449 340	90	WASHER, FINISHING	96	477 514	2	GROMMET
14	025 138	1	DECAL, PATENT NUMBER	97	477 580	2	PIN, SAFETY LOCK
15	480 932	1	PANEL	98	025 120	2	DECAL, SAFETY LOCK
16	481 459	1	PANEL	99	481 411	1	PANEL, WHEEL COVER - RIGHT
17	481 547	1	BOARD, TERMINAL	100	481 421	1	PANEL, RIGHT SIDE
18		2	SCREW, HEX WASHER HD. #10-24 X 1/2	101	481 921	1	PANEL, LOWER RIGHT REAR
19	441 961	1	BLOCK, FUSE (GAS)	102	481 429	1	PANEL, LOWER LEFT REAR
20	441 961	2	BLOCK, FUSE (DIESEL)	103	481 415	1	PANEL, MOUNTING
21	481 549	1	SCREW, FLAT HD. #10-24 X 1/2	104	025 093	1	DECAL, SIDE CONTROL PANEL
22	477 512	1	COVER, FUSE HOLDER	105	025 119	1	DECAL, FRONT CONTROL "GAS"
23	025 454	1	GROMMET		025 512	1	DECAL, FRONT
24	481 833	1	DECAL, "DIESEL FUEL" (DIESEL ONLY)	106	025 518	1	DECAL, IGNITION "DIESEL ONLY"
25	442 054	1	CHASSIS	107	481 384	1	PLATE, FLOOR
26	481 543	1	HORN, 12V	108	481 964	1	STRAP, HOOD HINGE
27	481 361	2	HEADLAMP ASSEMBLY	109	025 127	1	DECAL, HYDRAULIC SCHEMATIC
28	481 467	1	PANEL, FRONT GRILL	110	025 099	1	DECAL, ELECTRIC SCHEMATIC "GAS"
29	481 473	1	HINGE, ENGINE DOOR		025 516	1	DECAL, ELECTRICAL SCHEMATIC "DIESEL"
30		1	DOOR, ENGINE	111	481 452	1	TUBE, PVC
31	481 485	2	NUT, HEX 5/16-18	112		10	NUT, WHIZ 5/16-18
32		1	BRACKET, KEEPER LATCH	113	477 575	1	PLATE, BATTERY
33	481 487	4	SCREW, HEX WASHER HD. 1/4-20 X 3/4 HP-5	114	372 673	2	BOOT, BATTERY POST
34	321 125	1	LATCH, KEEPER	115	441 511	1	BATTERY, FORD - 62 AMP
35	491 155	1	RING, RETAINING 1/4E		206 962	1	BATTERY, DIESEL - 93 AMP
36	491 143	1	LATCH, HANDLE - LEFT	116	477 548	2	STUD, BENT
37		1	PAWL, LEFT	117		4	SCREW HEX HD. 5/16 - 18 X 1/2
38		1	PIN, SPRING 1/4 X 3/4	118	477 577	1	STRAP, BATTERY
39		2	NUT, HEX #8-32				
40	330 178	2	SPRING, EXTENSION				
41	025 514	2	SCREW, HEX HD. #8-32 X 1"				
42	025 194	2	DECAL, "RETRIEVER 6600"				
	025 196	2	DECAL "G"				
	025 522	2	DECAL "P"				
43	015 076	2	DECAL "D"				
44	025 106	2	DECAL "ADVANCE"				
45	481 945	1	DECAL, "SAFETY PIN"				
46	481 911	1	HOPPER ASSEMBLY				
47	481 909	1	PANEL, LEFT REAR HOPPER				
48	481 915	1	COVER, HOPPER				
49	481 431	1	PANEL RIGHT REAR HOPPER				
50	481 421	1	PANEL, TOP				
51	481 419	1	PANEL, RIGHT SIDE				
52	481 923	1	PANEL, LEFT SIDE				
53	481 413	1	PANEL, LOWER REAR LEFT				
54	481 437	1	PANEL, WHEEL COVER - LEFT				
55	481 449	1	DOOR, RIGHT SIDE				
56	481 441	1	PIN				
57	481 457	2	PLATE				
58		1	LATCH				
59	321 427	4	SCREW, HEX HD. 5/16 - 18 X 7/8				
60		1	RING, RETAINING				
61		4	NUT, HEX #10-24				
62	481 477	2	SCREW, HEX HD. #10-24 X 1"				
63		1	BRACKET				
64	481 346	2	WASHER, FLAT 1/4				
65		1	SEAT				
66	481 354	2	WASHER, LOCK #10-24				
67	330 708	1	BRACKET, SEAT				
68		2	BUMPER				
69		2	SCREW, PAN HD. #10-24 X 3/4				
70		4	SCREW, HEX HD. 5/16 - 18 X 5/8 W/LW				
71	477 560	1	SCREW, HEX HD. 3/8 - 16 X 7/8 W/LW				
72		1	PLATE, R.H.				
73	477 569	3	SCREW, HEX HD. 3/8 - 16 X 2 1/4 W/LW				
74		1	BRACKET, SEAT L.H.				
75	477 540	1	PIN, SPRING 1/4 X 3/4				
76	481 329	1	SHAFT				
77	481 319	1	HINGE				
78	402 940	1	HOOD				
79	490 641	2	BUMPER, HOOD				
80		1	ROD, HOOD PROP				
81	481 377	1	PIN, COTTER				
82	570 206	1	BRACKET, HOOD PROP				
83	489 639	1	GROMMET				
84	481 401	1	LIGHT, ROTATING WARNING GRILL, FRONT				

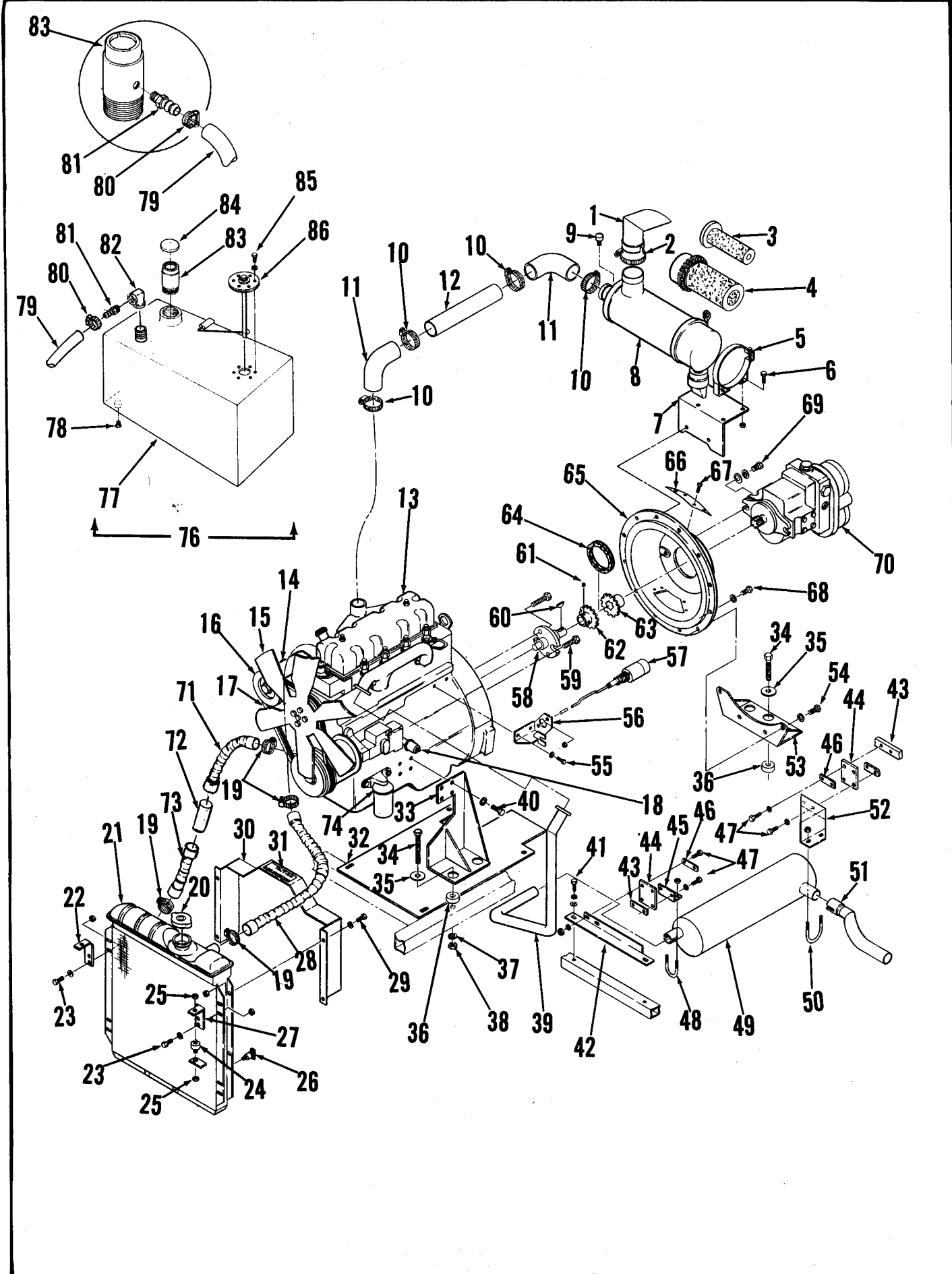
TSB 603, G-8

← LENS ONLY # 489641



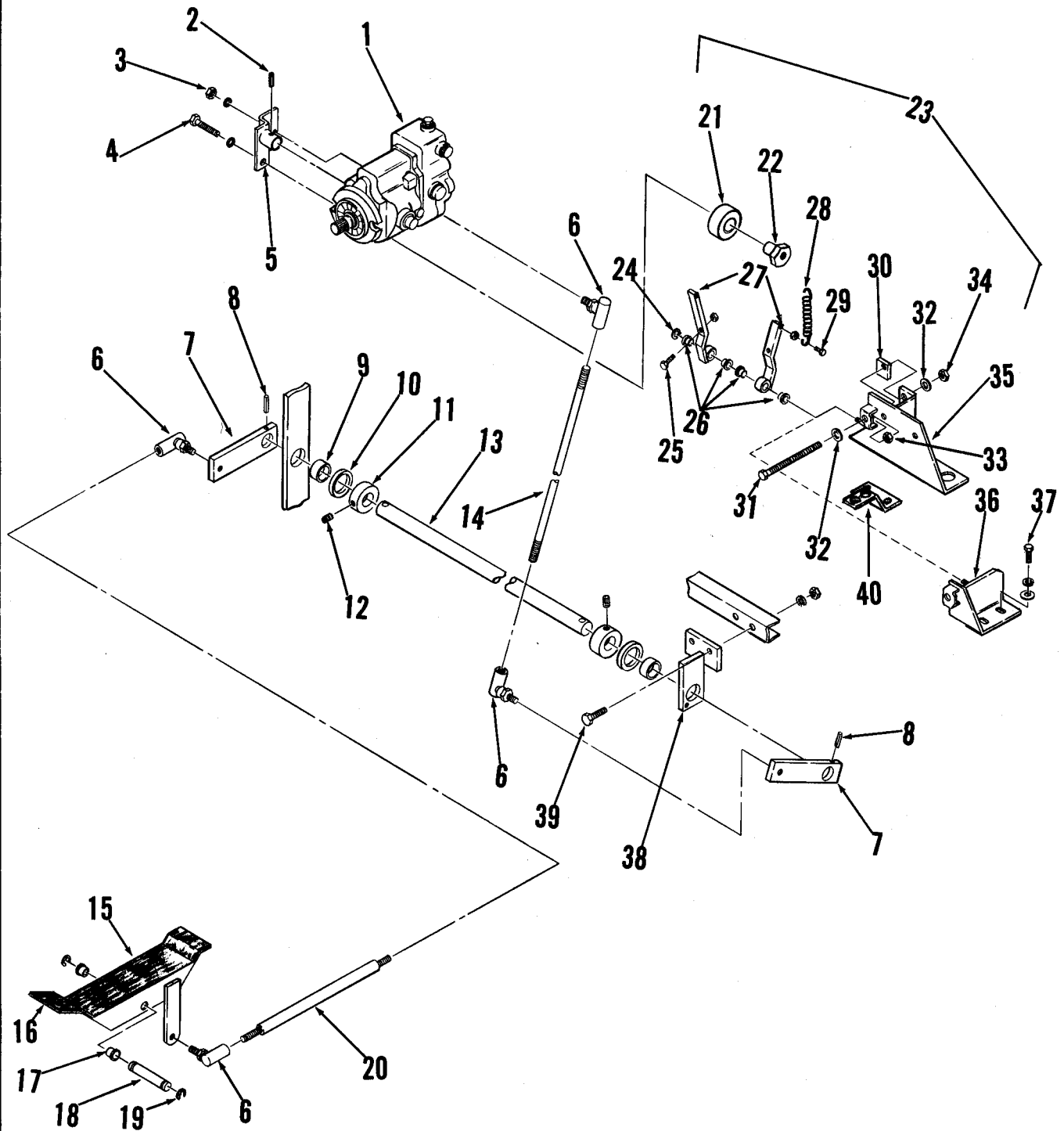
ENGINE ASSEMBLY - GAS

ITEM	PART NO	QTY	DESCRIPTION	ITEM	PART NO	QTY	DESCRIPTION
1	481 226	1	LEVER ASSEMBLY, THROTTLE C/O	70	740 214	1	BUSHING
2	456 328	1	LEVER, THROTTLE	71	480 704	1	ELEMENT, OIL FILTER
3		2	SCREW, HEX HD. 1/4 - 20 x 3/8 WITH SHAKEPROOF WASHER	72	480 705	1	PULLEY
4	478 457	1	LEVER	73	480 689	1	FAN, COOLING
5		2	SCREW, PAN HD. 1/4 - 20 x 3/8 WITH LOCKWASHER & JAM NUT	74	480 707	4	BOLT
6	481 387	1	BRACKET	75	480 701	1	PULLEY, CRANKSHAFT
7	481 385	1	CABLE ASSEMBLY	76		2	SCREW, HEX HD. HP 5 #10-24 x 1/2
8	481 627	1	ELBOW, AIR INTAKE	77		2	SCREW, HEX HD. 3/8 - 16 x 1/2 W/LKW
9	745 715	1	WASHER, SEALING	78	480 779	1	GUARD, FAN BELT
10		1	SCREW, HEX HD. 1/4 - 20 x 1"	79	480 778	1	BRACKET
11	112 771	2	CLAMP, HOSE	80		1	SCREW, HEX HD. 5/16 - 18 x 5/8 WITH FLAT WASHER & LOCKWASHER
12	440 213	2	CLAMP, HOSE	81	480 828	1	V - BELT
13	480 463	1	HOSE, AIR CLEANER	82	478 483	1	ALTERNATOR - REGULATOR
14	478 461	1	SERVICE INDICATOR	83	481 888	1	TEMPERATURE SENDER
15	478 710	1	AIR CLEANER	84	480 775	1	BRACKET, ALTERNATOR
16	478 720	1	ELEMENT, PRIMARY	85	480 772	1	BRACKET, ALTERNATOR
17	478 722	1	ELEMENT, SECONDARY SAFETY	86	367 486	2	BUSHING
18	480 650	2	BAND, MOUNTING	87		1	SCREW, HEX HD. 1/2 - 13 x 3 3/4 W/NUT
19		4	SCREW, HEX HD. 5/16 - 18 x 1/2 W/NUT	88		1	SCREW, HEX HD. 3/8 - 16 x 3/4 W/LKW
20	480 781	1	BRACKET, MOUNTING	89		2	SCREW, HEX HD. 5/16 - 18 x 1/2 W/WASHER
21		4	SCREW, HEX HD. 3/8 - 16 x 1 1/4 WITH WASHER & LOCKWASHER	90	441 600	1	CABLE, GROUND
22	479 600	1	PUMP, PROPULSION	91	480 733	1	BRACKET, ENGINE SUPPORT - LEFT
23		4	SCREW, PAN HD. #10-24 x 1/2 WITH WASHER & LOCKWASHER	92	481 652	1	BRACKET, SHIELD
24	480 811	1	COVER, BELL HOUSING	93	030 072	1	DECAL, HOT STACK
25	480 653	1	BELL HOUSING	94	480 709	1	SPACER, EXHAUST
26		2	SCREW, HEX HD. 1/2 - 13 x 1" W/LKW	95	480 760	1	CLAMP
27		4	SCREW, HEX HD. 1/2 - 13 x 2"	96		2	SCREW, HEX HD. 1/4 - 28 x 1/2 W/LKW
28	480 742	4	WASHER	97	481 766	1	TUBE, EXHAUST 480766
29	481 720	1	BRACKET	98		2	SCREW, HEX HD. 1/4 - 28 x 1/2 W/LKW
30	478 685	4	MOUNT, ENGINE	99	481 470	2	PLATE
31		2	SCREW, SOCKET HD. CAP 1/4 - 20 x 7/8	100	478 726	2	MOUNT, DIAPHRAGM
32	480 826	1	SPROCKET	101	481 468	2	PLATE, NUT
33	480 817	1	SPROCKET	102	480 659	1	BRACKET
34		6	SCREW, HEX HD. 3/8 - 24 x 1 1/4	103		4	SCREW, HEX HD. 1/4 - 20 x 1/2 W/LKW
35	480 820	1	CHAIN, COUPLER	104	481 337	1	TUBE, MUFFLER - EXHAUST
36		2	SCREW, SOCKET SET 1/4 - 20 x 1/4	105	343 236	3	CLAMP, MUFFLER
37	378 291	1	KEY	106	478 466	1	CLAMP, MUFFLER
38	480 790	1	ADAPTER, SHAFT	107	478 711	1	MUFFLER
39	481 656	1	ENGINE ASSEMBLY	108	480 763	1	BRACKET, MUFFLE CLAMP
	478 472	1	ENGINE, FORD 4 CYL. GAS	109		3	SCREW, HEX HD. 1/4 - 20 x 1/2 WITH FLAT WASHER & LKW
40	480 676	1	PLATE, DIP STICK	110		1	SCREW, HEX HD. 3/8 - 16 x 1 1/4 WITH WASHER, LOCKWASHER & HEX NUT
41	760 212	1	GROMMET	111	480 802	1	PAN
42		3	SCREW, HEX HD. 5/16 - 18 x 5/8 W/LKW	112	329 145	4	CLAMP, HOSE
43	481 686	1	TUBE, RUBBER .312 x 60"	113	480 829	1	HOSE, RADIATOR - LOWER
44	219 932	2	CLAMP, HOSE	114	478 689	1	RADIATOR
45	480 679	1	FUEL FILTER KIT	115	478 693	1	CAP, RADIATOR
46	480 681	1	BRACKET, FUEL FILTER	116	481 375	2	MOUNT, RADIATOR - RIGHT
47	480 683	1	HOSE, FUEL FILTER	117		8	SCREW, HEX HD. 1/4 - 20 x 5/8 WITH WASHER & WHIZ NUT
48	760 200	1	HOSE, FUEL	118	481 373	2	MOUNT, RADIATOR - LEFT
49	111 309	1	ELBOW	119	478 684	4	MOUNT, RADIATOR (RUBBER)
50	477 522	2	BARB	120	386 420	1	DRAIN, VALVE
51		2	NUT, HEX 5/16 - 24	121	478 725	1	HOSE, RADIATOR - UPPER
52	480 713	1	GASKET, AIR HORN	122	480 769	1	BRACKET
53	480 674	1	CARBURATOR KIT	123	481 645	1	SHROUD, FAN
54	480 675	2	GASKET, CARBURATOR	124	030 080	1	DECAL, HANDS CLEAR
55	480 677	2	SPACER	125		4	SCREW, PAN HD. #10 - 24 x 3/8 WITH WASHER & WHIZ NUT
56	480 784	2	STUD, CARBURATOR	126	478 469	1	FUEL TANK ASSEMBLY
57	480 843	1	SPACER, CARBURATOR	127	481 546	1	PLUG, PIPE 1/8 - 27 NPT
58	478 481	1	GOVERNOR	128	481 684	1	HOSE .187 x 48"
59	481 606	1	PLATE, COIL MOUNTING	129	219 932	1	CLAMP, HOSE
60	480 695	1	WIRE, HIGH TENSION	130	477 523	1	BARB 5/16 x 1/8
61	480 691	1	COIL, IGNITION	131	111 295	1	ELBOW 1/8 x 90 DEG. BRASS
62	480 693	1	STRAP, IGNITION COIL	132	478 502	1	CAP, GAS
63		4	SCREW, HEX HD. 1/4 - 20 x 1/2 WITH WASHER & WHIZ NUT	133	478 514	1	FILLER NECK
64		8	SCREW, HEX HD. 5/16 - 18 x 1 1/4 WITH FLAT WASHER & LOCKWASHER	134		5	SCREW, PAN HD. #10-24 x 7/16 WITH WASHER & LKW
65	478 485	1	GUARD, ENGINE	135	478 358	1	FUEL LEVEL SENDER
66	480 739	1	BRACKET, ENGINE SUPPORT - RIGHT	136	478 467	1	TANK, FUEL
67	480 458	1	BRACKET, ENGINE GUARD				
68	480 835	4	SPACER				
69	478 698	1	PRESSURE SENDER, OIL				



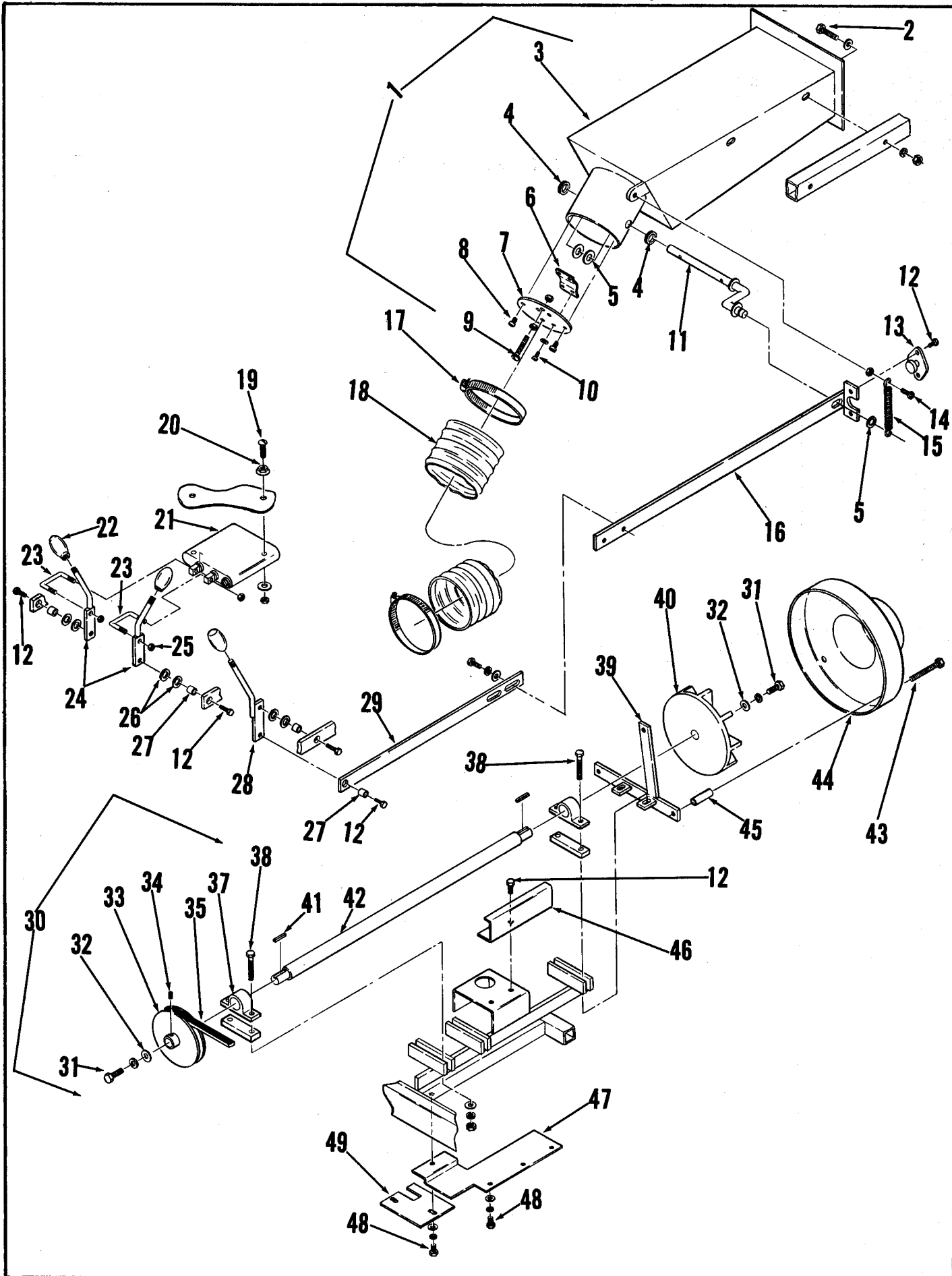
ENGINE ASSEMBLY - DIESEL

ITEM	PART NO	QTY	DESCRIPTION	ITEM	PART NO	QTY	DESCRIPTION
1	481 343	1	INTAKE, AIR CLEANER	72	453 423	1	PIPE HOSE ADAPTER
2	112 771	1	CLAMP, HOSE	73	481 287	1	HOSE
3	478 722	1	ELEMENT, SECONDARY SAFETY	74	481 247	1	FILTER, OIL
4	478 720	1	ELEMENT, PRIMARY	75	481 245	1	FILTER, FUEL (NOT SHOWN)
5	480 650	2	BAND, MOUNTING	76	481 469	1	FUEL TANK ASSEMBLY - DIESEL
6		4	SCREW, HEX HD. 5/16 - 18 x 1/2 W/NUT	77	478 467	1	TANK, FUEL
7	480 781	1	BRACKET, MOUNTING	78	481 546	1	PLUG, PIPE 1/8 - 27 NPT
8	478 710	1	AIR CLEANER	79	481 684	2	HOSE .187 x 48"
9	478 461	1	SERVICE INDICATOR	80	219 932	2	CLAMP, HOSE
10	756 364	4	CLAMP, HOSE	81	477 523	2	BARB
11	481 349	2	ELBOW, AIR INTAKE	82	111 295	1	ELBOW 1/8 x 90 DEG. BRASS
12	481 351	1	TUBE, AIR INTAKE	83	481 466	1	FILLER, NECK
	481 251	1	ENGINE ASSEMBLY	84	478 502	1	CAP, GAS
13	481 235	1	ENGINE, 108 DIESEL - PERKINS	85		5	SCREW, PAN HD. #10 - 32 x 7/16 WITH WASHER & LKW
14	478 483	1	ALTERNATOR, REGULATOR	86	478 358	1	SENDER, FUEL LEVEL
15	481 259	1	FAN, COOLING				
16	481 623	1	SHEAVE, ALTERNATOR - REGULATOR				
17	478 718	1	V-BELT				
18	478 698	1	SENDER, OIL PRESSURE				
19	329 145	6	CLAMP, HOSE				
20	478 693	1	CAP, RADIATOR				
21	478 689	1	RADIATOR				
22	481 375	1	BRACKET, RADIATOR MOUNTING - RIGHT				
23		8	SCREW, HEX HD. 1/4 - 20 x 5/8 WITH WASHER & WHIZ NUT				
24	478 684	4	MOUNT, RADIATOR				
25		8	NUT, HEX 1/4 - 20				
26	386 420	1	VALVE, DRAIN				
27	481 373	1	BRACKET, RADIATOR MOUNTING - LEFT				
28	478 725	1	HOSE, RADIATOR - UPPER				
29		4	SCREW, PAN HEAD #10 - 24 x 3/8 WITH WASHER & WHIZ NUT				
30	481 311	1	SHROUD, FAN				
31	030 080	1	DECAL "CAUTION KEEP HANDS CLEAR"				
32	481 237	1	PLATE, OIL SPILL				
33	481 295	2	BRACKET, ENGINE MOUNTING				
34		7	BOLT 1/2 - 13 x 5"				
35	480 742	7	WASHER				
36	478 685	7	MOUNT, RUBBER				
37		7	WASHER, LOCK 1/2				
38		7	NUT, HEX 1/2 - 13				
39	481 331	1	EXHAUST TUBE				
40		8	SCREW, HEX HD. 7/16 - 20 x 3/4 W/LKW				
41		2	SCREW, HEX HD. 1/4 - 20 x 1/2 W/WASHER & LKW				
42	480 769	1	BRACKET				
43	481 468	2	NUT PLATE				
44	478 726	2	MOUNT, DIAPHRAGM				
45	480 763	1	BRACKET				
46	481 470	2	PLATE				
47		8	SCREW, HEX HD. 1/4 - 20 x 5/8 WITH FLAT WASHER, LOCK WASHER & HEX NUT				
48	478 466	1	CLAMP, MUFFLER				
49	478 711	1	MUFFLER				
50	343 236	1	CLAMP, MUFFLER				
51	481 337	1	TUBE, MUFFLER EXHAUST				
52	480 659	1	BRACKET				
53	481 305	1	BRACKET, BELL HOUSING				
54		4	SCREW, HEX HD. 1/2 - 13 x 1 W/LKW				
55		2	SCREW, HEX HD. 3/8 - 24 x 5/8 W/LKW				
56	481 393	1	BRACKET, SOLENOID				
57	481 253	1	STOP CONTROL SOLENOID				
58	481 293	1	ADAPTOR, DRIVE				
59		5	SCREW, HEX HD. 3/8 - 24 x 1 1/4				
60	378 291	1	KEY, WOODRUFF				
61		2	SCREW, SOCKET SET 1/4 - 20 x 1/4				
62	480 817	1	SPROCKET				
63	480 826	1	SPROCKET				
64	480 820	1	CHAIN, COUPLER				
65	481 289	1	BELL HOUSING				
66	487 168	2	COVER, BELL HOUSING				
67		4	SCREW, HEX WASHER HD. #10-24 x 1/2 HP5				
68		12	SCREW, HEX HD. 3/8 - 16 x 3/4 WITH SHAKEPROOF WASHER				
69		2	BOLT, HEX HD. 1/2 - 13 x 1 1/2 WITH SHAKEPROOF WASHER				
70	479 600	1	PUMP, PROPULSION				
71	456 304	1	HOSE, RADIATOR				



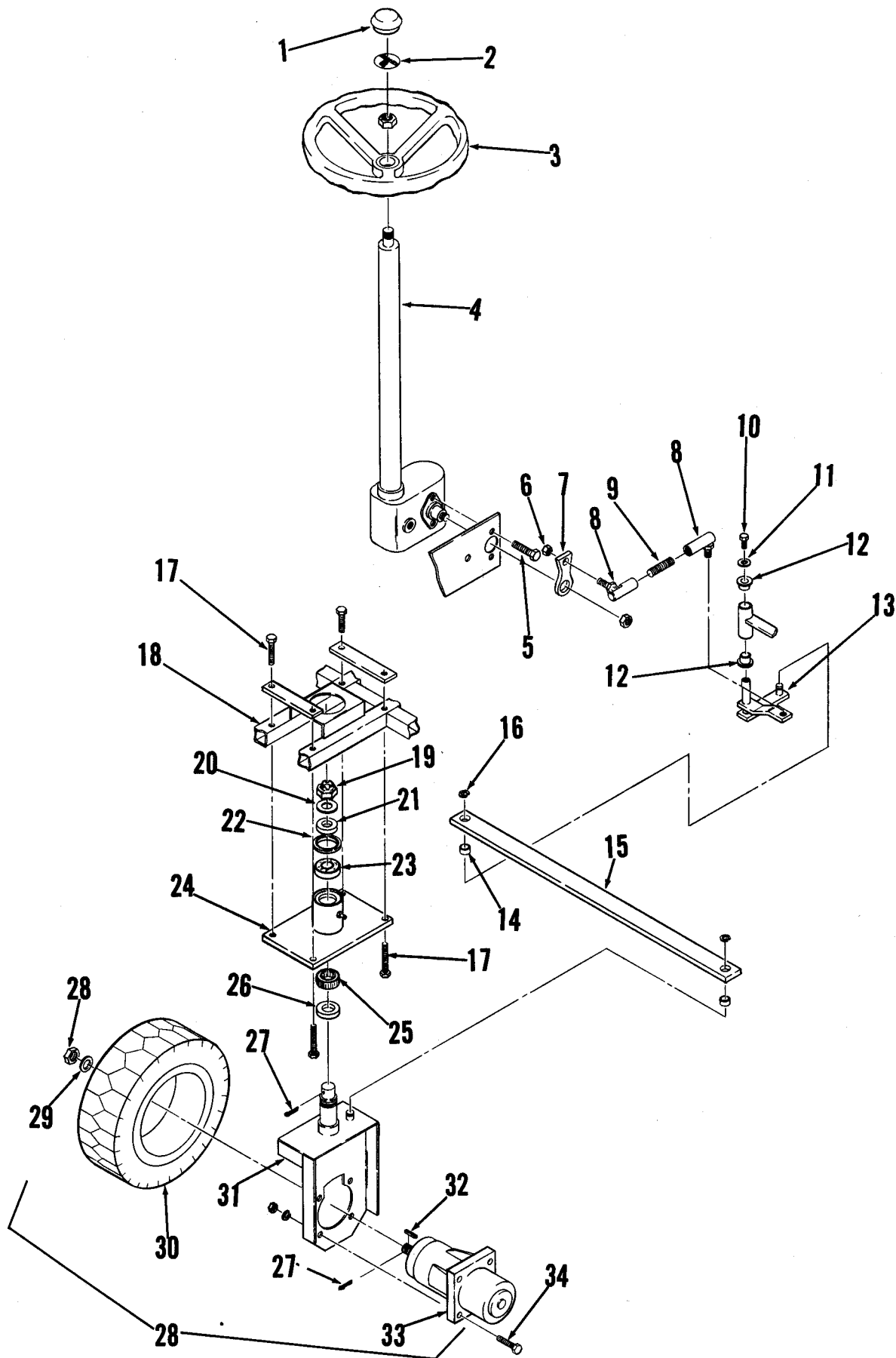
ACCELERATOR & LINKAGE

ITEM	PART NO	QTY	DESCRIPTION
1	479 600	1	PUMP, PROPULSION
2		1	PIN, SPRING 1/4 x 1 1/4
3		1	NUT, HEX 5/16 - 24 W/LKW
4		1	SCREW, HEX HD. 5/16 - 18 x 2 1/4 W/LKW
5	481 612	1	LINK WELDMENT (GAS MODEL)
6	481 381	1	LINK WELDMENT (DIESEL MODEL) <i>TSB 492, G-10</i>
7	363 685	4	ROD, END
8	477 686	2	LEVER
9		2	PIN, SPRING 3/16 x 1 1/4
10	370 878	2	BEARING, SLEEVE
11	367 192	2	WASHER
12	367 354	2	COLLAR, LOCKING
13		2	SCREW, SOC. SET 5/16 - 18 x 1/4
14	477 671	1	SHAFT
15	481 614	1	ROD (GAS MODEL)
16	481 220	1	ROD (DIESEL MODEL)
17	449 958	1	MAT, PEDAL
18	448 038	1	PEDAL, FOOT
19	206 849	2	BEARING, NYLINER
20	448 050	1	PIN
21	321 125	2	RING, RETAINING
22	481 222	1	ROD
23	372 773	1	BEARING
24	448 057	1	NUT
25	481 722	1	ACCELERATOR ADJUSTMENT ASS'Y (GAS)
26	481 730	1	ACCELERATOR ADJUSTMENT ASS'Y (DIESEL)
27	321 427	2	RING, RETAINING
28		2	SCREW, HEX HD. 1/4 - 20 x 1.0 W/NUT
29	324 505	4	BEARING, FLANGE .376
30	481 696	2	ARM WELDMENT
31	481 704	1	SPRING, EXTENSION
32		2	SCREW, HEX HD. #8-32 x 1/2 W/NUT
33	481 706	1	STOP
34	481 702	1	BOLT, ADJUSTMENT
35		2	WASHER, FLAT 3/8
36		1	NUT, HEX 3/8 - 16
37		1	NUT, LOCK 3/8 - 16
38	481 720	1	ENGINE SUPPORT (GAS)
39	481 728	1	BRACKET SUPPORT (DIESEL)
40		2	SCREW, HEX HD. 5/16 - 18 x 5/8 WITH FLAT WASHER, & LOCKWASHER (DIESEL ONLY)
	477 659	1	BRACKET, PIVOT
		2	SCREW, HEX HD. 5/16 - 18 x 11/16 W/LKW & NUT
	481 359	1	BRACKET



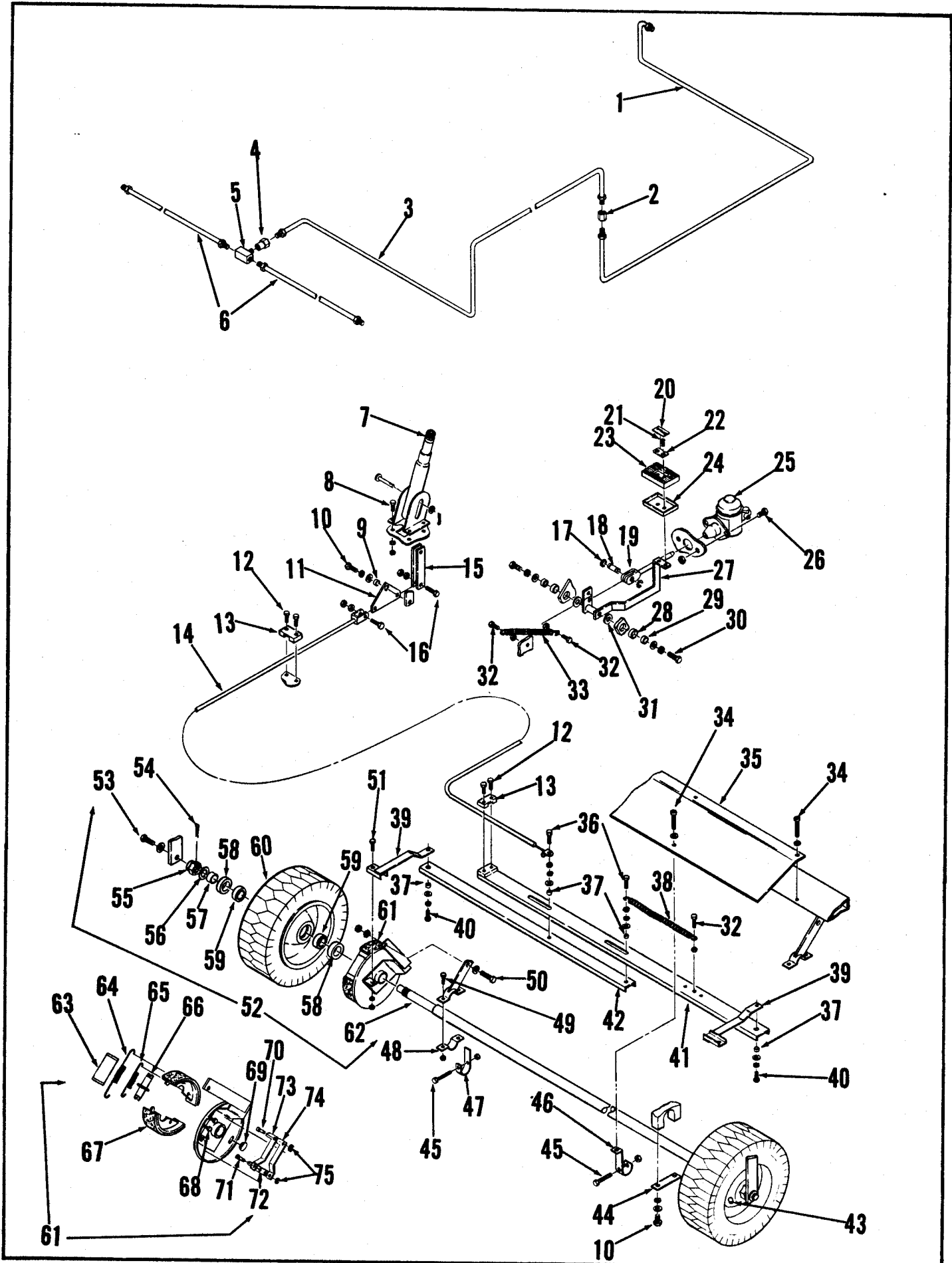
IMPELLER ASSEMBLY

ITEM	PART NO	QTY	DESCRIPTION
1	477 978	1	ADAPTER ASSEMBLY
2		4	SCREW, HEX HD. 1/4-20 X 2" WITH FLAT WASHER, LOCKWASHER & NUT
3	477 977	1	ADAPTER WELDMENT
4	477 935	2	BUSHING, NYLON
5		3	WASHER, FLAT 5/16
6	477 976	1	CLAMP
7	477 937	1	PLATE
8		2	SCREW, SOC. HD. #8-32 X 1/2
9		1	SCREW, RH. HD. 1/4 - 20 X 3" WITH 2 HEX NUTS
10		4	SCREW, PAN HD. #8-32 X 1/4 WITH SHAKEPROOF WASHER
11	477 939	1	ROD
12		8	SCREW, HEX HD. 1/4 - 20 X 1/2
13	441 555	1	SWITCH, STARTER.
14		1	SCREW, HEX HD. 1/4 - 20 X 1 1/4 W/NUT
15	365 068	1	SPRING
16	478 002	1	ARM, LINKAGE
17	355 488	2	CLAMP, HOSE 6"
18	478 009	1	HOSE
19		2	SCREW, OVAL HD. 1/4 - 20 X 1 3/4 WITH FLAT WASHER & HEX NUT
20		2	WASHER, FINISHING
21	479 612	1	VALVE, CONTROL
22	378 534	1	KNOB
23	477 988	2	LINKAGE
24	477 983	2	LEVER
25		4	NUT, HEX #10-24
26	163 767	6	WASHER, BOWED
27	379 298	4	BUSHING
28	477 993	1	LEVER
29	477 998	1	STRAP
30	480 635	1	IMPELLER ASSEMBLY - GAS
	481 601	1	IMPELLER ASSEMBLY - DIESEL
31		2	SCREW, HLX HD. 5/16 - 18 X 1/2 WITH LOCKWASHER
32	358 959	2	WASHER
33	478 715	1	SHEAVE - GAS
	481 605	1	SHEAVE - DIESEL
34		1	SCREW, SET 5/16 - 18 X 3/8
35	478 719	1	BELT, V - (GAS MODEL)
	481 611	1	BELT, V - (DIESEL MODEL)
36	481 609	2	BLOCK, BEARING (DIESEL ONLY)
37	390 917	2	PILLOW BLOCK
38		4	SCREW, HEX HD. 3/8 - 16 X 2 1/2 (3 1/2 LG. ON DIESEL MODEL) W/FW & LKW.
39	478 700	1	BRACKET (GAS MODEL)
	481 490	1	BRACKET (DIESEL MODEL)
40	478 668	1	IMPELLER
41	158 135	2	KEY
42	478 703	1	SHAFT (GAS MODEL)
	481 603	1	SHAFT (DIESEL MODEL)
43		3	SCREW, HEX HD. 1/4 - 20 X 3"
44	478 672	1	SHROUD
45	478 762	3	SPACER
46	481 492	1	GUARD, SHAFT
47	481 486	1	SHIELD
48		5	SCREW, HEX HD. #10-24 X 3/8 WITH FLAT WASHER & LOCKWASHER
49	480 990	1	PANEL



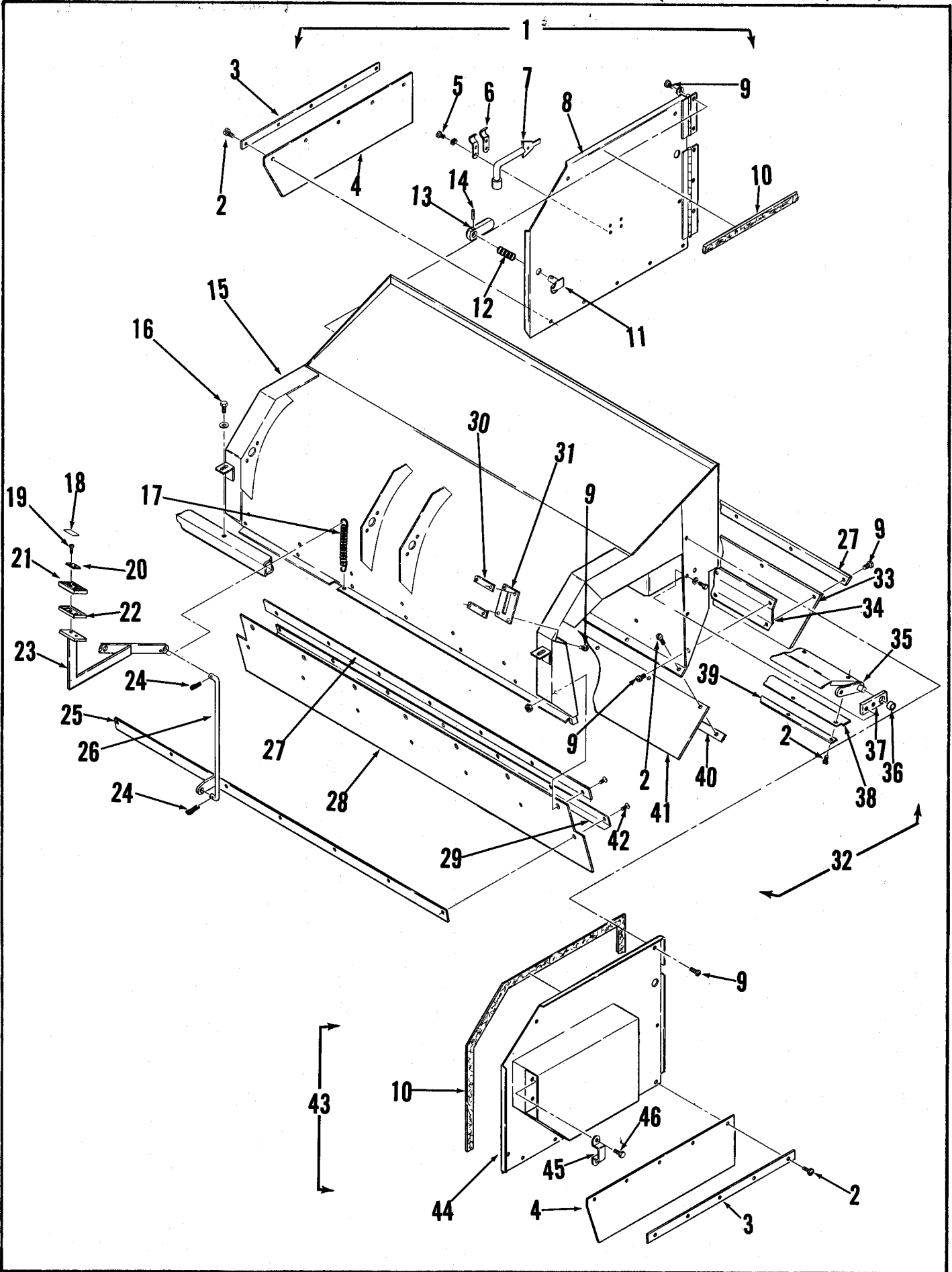
FRONT WHEEL ASSEMBLY

Item	Part No.	Qty	Description
1	449774	1	Cap, Steering Wheel
2	016754	1	Decal, Advance
3	477770	1	Steering Wheel
4	477767	1	Gear, Steering
5		3	Screw, Hex Hd. 7/16-14 x 1
6		1	Nut, Hex 1/2-20
7	477806	1	Arm, Steering
8	477772	2	Ball Joint
9	477808	1	Stud
10		1	Screw, Hex Hd. 5/16-18 x 3/4
11	358959	1	Washer
12	250414	2	Bushing
13	477794	1	Crank, Steering
14	370878	2	Bearing, Sleeve
15	477804	1	Linkage, Steering
16	478775	2	Ring, Retaining
17		4	Screw, Hex Hd. 5/8-11 x 3
18	477802	2	Plate, Nut
19	110817	1	Nut, Castle
20		1	Washer, 7/8
21	477781	1	Bushing
22	171081	1	Seal, Shaft
23	158143	1	Bearing, Cup
	158151	1	Bearing, Cone
24	477803	1	Housing
25	744474	1	Bearing, Cup
	744471	1	Bearing, Cone
26	477783	1	Seal, Shaft
27		2	Pin, Cotter 1/8 x 1-1/2
28	477739	1	Nut, Slotted
29	101656	1	Washer
30	477777	1	Front Tire Assembly
	455310	1	Tire, Front
	477775	1	Hub, Front
31	477746	1	Spindle
32	477741	1	Key
33	456902	1	Motor, Drive
34		4	Screw, Hex Hd. 1/2-13 x 2



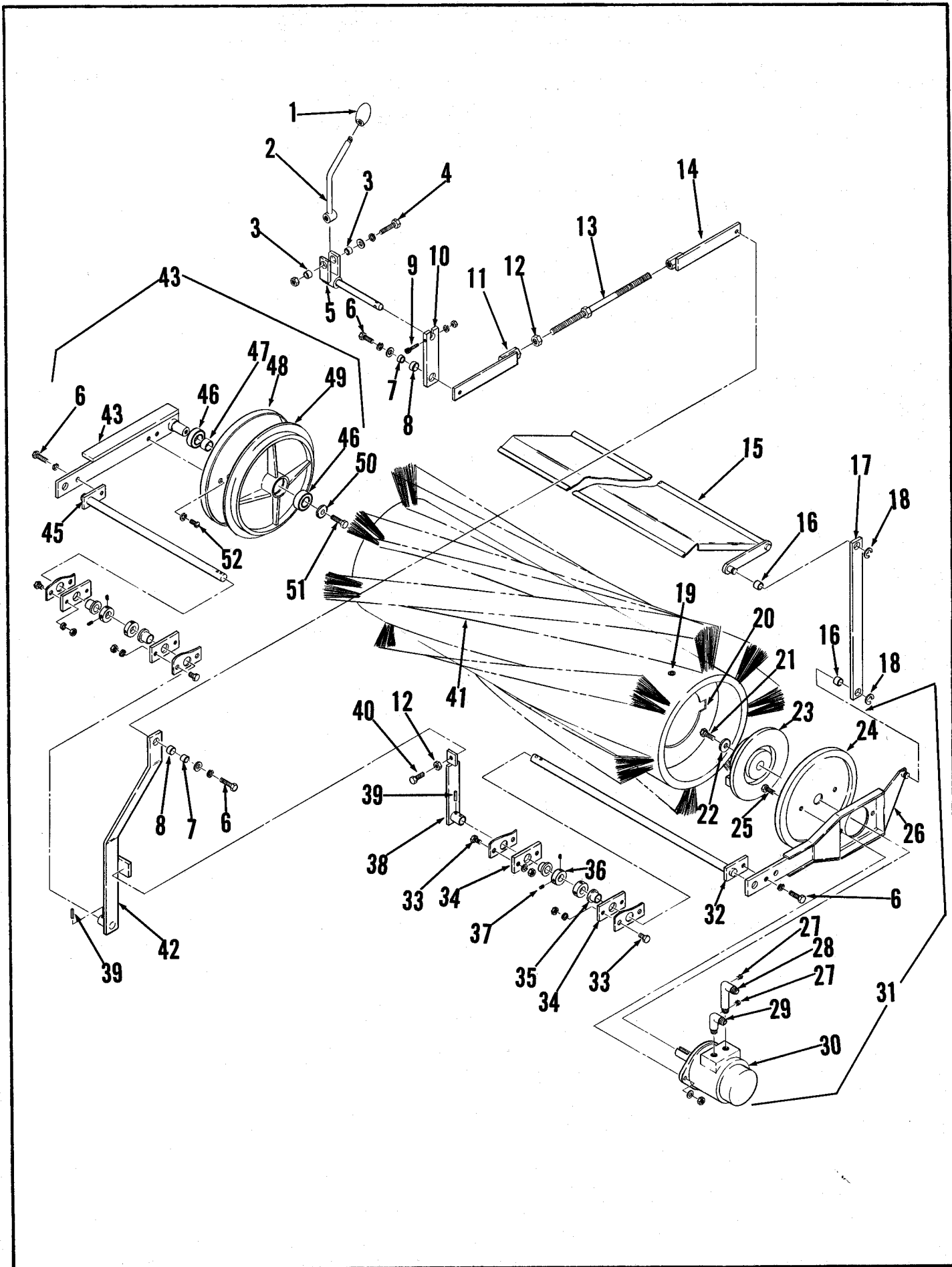
REAR WHEEL ASSEMBLY

ITEM	PART NO	QTY	DESCRIPTION	ITEM	PART NO	QTY	DESCRIPTION
1	481 450	1	BRAKE LINE	73	480 386	1	LEVER, SLIDING LEFT
2	477 837	1	CONNECTOR	74	480 384	1	LEVER, SLIDING RIGHT
3	480 374	1	TUBE ASSEMBLY	75	480 392	2	RING, RETAINING
4	477 831	1	CONNECTOR, FEMALE				
5	477 832	1	CONNECTOR, TEE				
6	477 834	2	HOSE ASSEMBLY				
7	448 200	1	LEVER ASSEMBLY, BRAKE				
8		4	SCREW, HEX HD. 5/16 - 18 X 3/4 WITH LOCKWASHER & HEX NUT				
9	385 356	1	BUSHING				
10		5	SCREW, HEX HD. 3/8-16 X 1/2 WITH FLAT WASHER & LOCKWASHER				
11	477 906	1	LEVER				
12		4	SCREW, HEX HD. 1/4 - 20 X 7/8				
13	477 884	2	CLAMP, CABLE				
14	477 829	1	CABLE ASSEMBLY				
15	477 903	2	STRAP				
16		2	SCREW, HEX HD. 5/16 - 18 X 1 1/4 WITH 2 HEX NUTS EACH				
17	321 427	2	RING, RETAINING				
18	477 902	1	PIN				
19	477 909	1	ROD, MASTER CYLINDER				
20	025 122	1	DECAL, BRAKE				
21		2	SCREW, FLAT HD. 1/4 - 20 X 1"				
22	365 081	1	PLATE, PEDAL				
23	365 086	1	PAD, RUBBER				
24	365 087	1	CUP, PEDAL				
25	477 828	1	CYLINDER, MASTER				
26		2	SCREW, HEX HD. 3/8 - 16 X 1" W/NUT				
27	481 336	1	LEVER, BRAKE				
28	367 168	2	BEARING				
29	367 206	2	BUSHING				
30		2	SCREW, HEX HD. 1/2 - 13 X 1 1/2 WITH FLAT WASHER & LOCKWASHER				
31	367 192	2	WASHER				
32		3	SCREW, HEX HD. 1/4 - 20 X 1" W/NUT				
33	448 112	1	SPRING, EXTENSION				
34		8	SCREW, PAN HD. 1/4 - 20 X 1/2 W/LKW				
35	479 325	1	SHIELD				
36		2	SCREW, HEX HD. 1/4 - 20 X 1" WITH HEX NUT, FLAT WASHER & LOCKWASHER				
37	379 298	4	BUSHING				
38	370 355	1	SPRING, EXTENSION				
39	477 914	2	LEVER				
40		2	SCREW, HEX HD. 1/4 - 20 X 3/4 WITH FLAT WASHER & LOCKWASHER				
41	477 917	1	LINKAGE				
42	477 904	1	CHANNEL				
43	344 362	2	FITTING, GREASE				
44	477 576	2	PLATE				
45		4	SCREW, HEX HD. 1/4 - 20 X 1 3/4 WITH WHIZ NUT				
46	479 327	2	STRAP				
47	477 905	2	STOP				
48	478 195	2	STRAP				
49		4	SCREW, HEX HD. 5/16 - 18 X 1" WITH WHIZ NUT				
50		2	SCREW, HEX HD. 1/2 - 13 X 1 1/2 WITH FLAT WASHER & 2 NUTS				
51		2	SCREW, HEX HD. 1/4 - 20 X 3/4 WITH LOCK WASHER & HEX NUT				
52	477 735	1	WHEEL ASSEMBLY, REAR				
53		2	SCREW, HEX HD. 1/2 - 13 X 1" W/FW				
54		2	PIN, COTTER 3/16 X 2"				
55	101 265	2	NUT, CASTLE				
56	101 656	2	WASHER				
57	477 729	2	BUSHING, SPACER				
58	477 724	4	SEAL				
59	378 259	4	BEARING CUP				
	378 267	4	BEARING, CONE				
60	477 743	2	TIRE ASSEMBLY C/O				
	448 145	1	TIRE				
	477 716	1	HUB				
61	477 930	1	BRAKE SHOE ASSEMBLY-LEFT (SHOWN)				
	477 931	1	BRAKE SHOE ASSEMBLY-RIGHT				
62	477 727	1	AXEL				
63	480 380	1	WHEEL CYLINDER - LEFT				
	480 378	1	WHEEL CYLINDER - RIGHT				
64	480 394	1	SPRING, SHOE RETURN				
65	480 396	1	SPRING, ADJUSTER				
66	480 398	1	ADJUSTER ASSEMBLY				
67	477 838	2	SHOE (1 SET OF 2)				
68		2	SCREW, HEX HD. SEMS 1/4 - 20 X 1/2				
69	480 400	1	PLUG, HOLE				
70	480 390	1	PIN, GUIDE				
71	480 388	1	PIN, PIVOT				
72	480 382	1	LEVER, PIVOT				



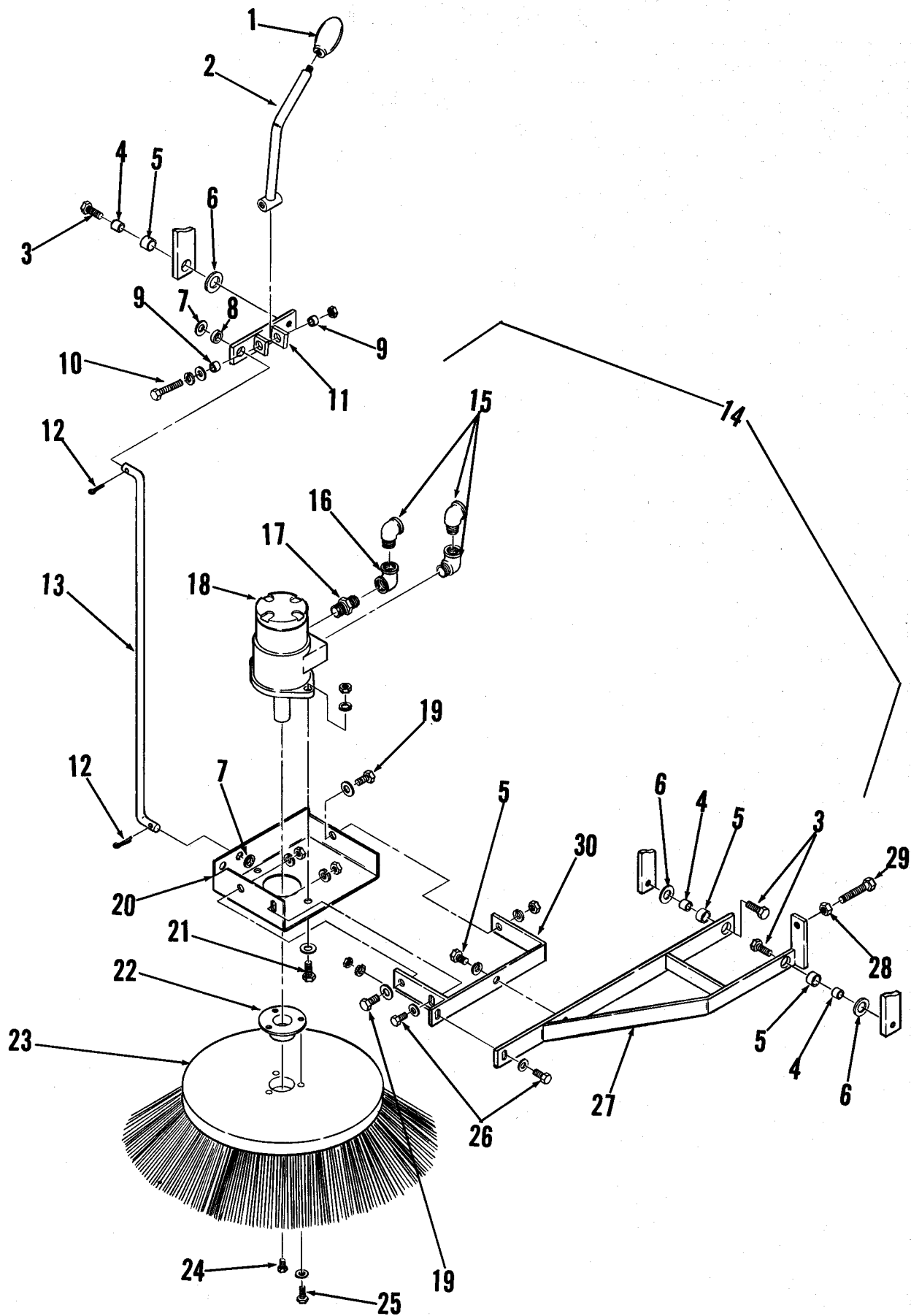
MAIN BROOM HOUSING ASSEMBLY

ITEM	PART NO	QTY	DESCRIPTION
1	479 851	1	PANEL ASSEMBLY
2		30	SCREW, PAN HD. #10-24 X 3/8
3	479 322	2	STRAP, SIDE
4	479 314	2	SKIRT, SIDE
5		4	SCREW, PAN HD. #10-24 X 1/4 W/LW
6	477 620	2	CLAMP, TOOL
7	477 598	1	TOOL (NOT INCLUDED IN PANEL ASS'Y)
8	479 821	1	PANEL, DOOR
9		27	SCREW, PAN HD. #10-24 X 3/8 W/LW
10	479 834	2	GASKET
11	479 377	1	LATCH, HANDLE
12	200 980	1	SPRING, COMPRESSION
13	479 371	1	HANDLE
14		1	PIN, COTTER 1/8 X 3/4
15	479 261	1	HOUSING, BROOM
16		2	SCREW, HEX HD. 1/2 - 13 X 2 1/2 WITH LKW. & 2 WASHERS (FRONT SIDE)
17		1	SPRING, EXTENSION
18	025 126	1	DECAL, FLAP
19		2	SCREW, FLAT HD. 1/4 - 20 X 3/4
20	365 081	1	PLATE
21	365 082	1	PAD, RUBBER
22	365 083	1	CUP, PEDAL
23	479 309	1	LEVER, FOOT
24		2	PIN, COTTER 1/16 X 3/4
25	479 223	1	MOUNT, SKIRT
26	479 276	1	ROD, LINKAGE
27	479 285	2	STRAP
28	479 318	1	SKIRT, FRONT
29	479 220	1	PLATE
30	477 570	4	PLATE, NUT
31	477 572	2	SHIELD
32	479 330	1	BROOM HOUSING ASSEMBLY
33	479 317	1	SKIRT, REAR
34	479 279	1	PLATE
35	479 237	1	PLATE
36	370 878	2	BEARING, SLEEVE
37	479 267	2	PILLOW BLOCK
38	479 320	1	GUARD
39	479 291	1	STRAP
40	479 288	1	STRAP
41	479 316	1	SKIRT, REAR
42		14	SCREW, FLAT HD. #10-24 X 1/2
43	479 962	1	PANEL ASSEMBLY
44	479 961	1	PANEL
45	477 511	1	CLAMP
46		2	SCREW, HEX HD. 1/4 - 20 X 3/8 W/WHIZ NUT



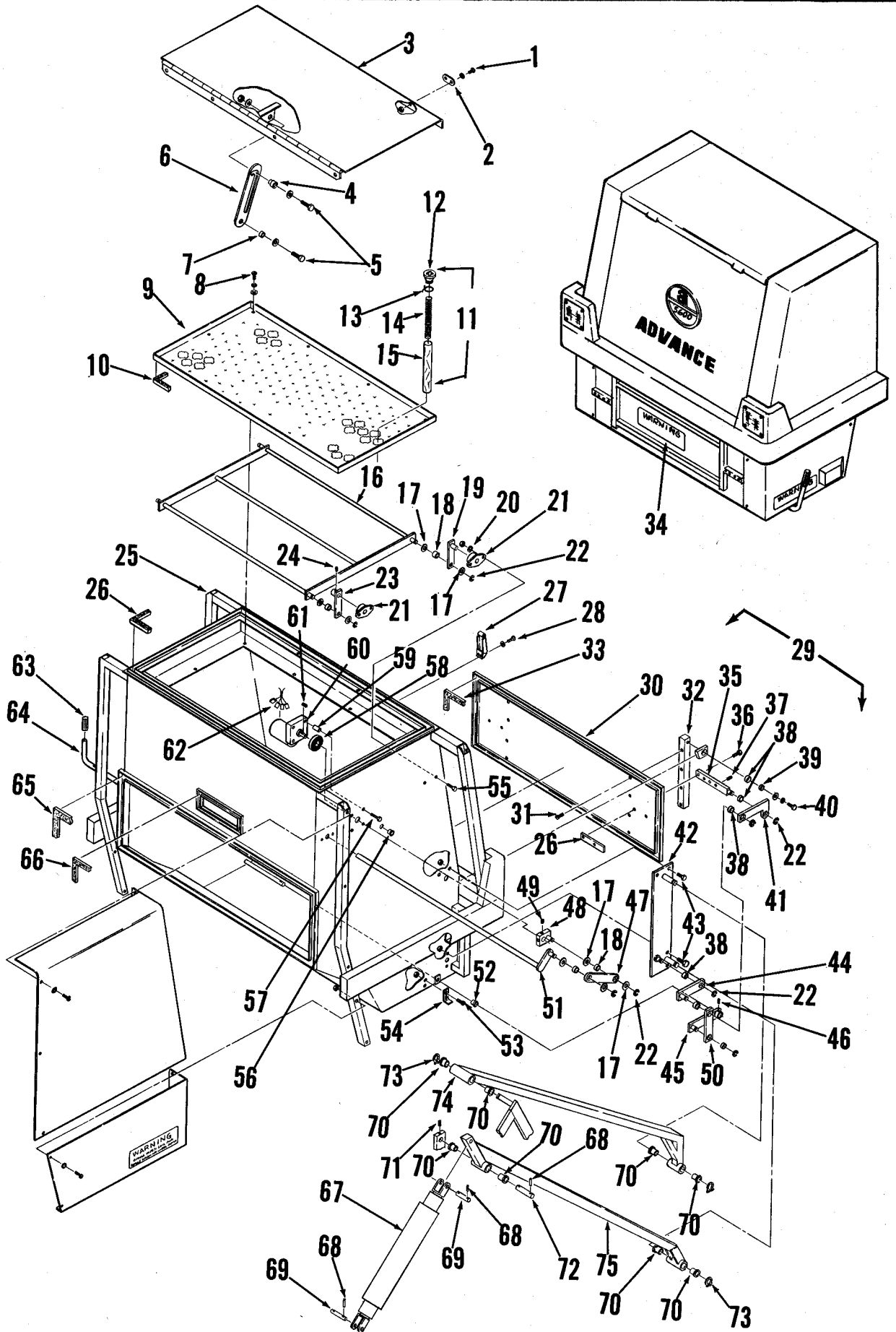
MAIN BROOM ASSEMBLY

ITEM	PART NO	QTY	DESCRIPTION
1	364 527	1	KNOB
2	479 492	1	HANDLE
3	320 595	2	BUSHING
4		1	SCREW, HEX HD. 5/16 - 18 X 1 3/4 WITH FLAT WASHER, LOCKWASHER & HEX NUT
5	479 468	1	CRANK
6		4	SCREW, HEX HD. 1/2 - 13 X 1.00 WITH FLAT WASHER & LOCKWASHER
7	360 627	2	BUSHING, SPACER
8	370 878	2	BEARING, SLEEVE
9		1	SCREW, SOC. HD. CAP 1/4 - 20 X 1 1/2 WITH LOCKWASHER & HEX NUT
10	479 516	1	LEVER
11	479 507	1	YOKE, RIGHT HAND
12		2	NUT, HEX 1/2 - 13 JAM
13	479 525	1	TURNBUCKLE
14	479 501	1	YOKE, LEFT HAND
15	479 237	1	PLATE
16	478 781	2	BEARING, SLEEVE
17	479 519	1	LINKAGE
18	478 775	2	RING, RETAINING, EXTERNAL
19		16	SCREW, PAN HD. S. T. 1/4 - 20 X 1 1/4
20	477 736	2	INSERT, BROOM
21		1	SCREW, HEX HD. 1/4 - 20 X 7/8
22	159 387	1	WASHER
23	477 762	1	HUB, DRIVER
24	479 442	1	GUARD, STRING
25		2	SCREW, HEX HD. 1/2 - 13 X 1 1/4 WITH LOCKWASHER & HEX NUT
26	479 533	1	ARM WELDMENT, LEFT
27	481 546	2	PLUG
28	481 342	1	ELBOW, MALE
29	481 340	1	ELBOW, MALE
30	479 606	1	MOTOR, MAIN BROOM
31	479 535	1	BROOM ARM ASSEMBLY
32	479 477	1	LEVER, LEFT
33		8	SCREW, HEX HD. 5/16 - 18 X 1.0 WITH LOCKWASHER & HEX NUT
34	479 273	4	PILLOW BLOCK
35	444 944	4	BEARING, FLANGED
36	444 820	4	COLLAR, LOCKING
37		8	SCREW, SOCKET SET 5/16 - 18 X 1/4
38	479 459	1	LEVER
39		4	SPRING PIN 5/16 X 1 3/4
40	479 513	1	SCREW, ADJUSTING
41	477 734	1	MAIN BROOM, MEDIUM FILL
	477 742	1	MAIN BROOM, HEAVY DUTY MED. FILL
	477 738	1	MAIN BROOM, FULL FILL
	477 745	1	MAIN BROOM, HEAVY DUTY FULL FILL
	477 748	1	MAIN BROOM, WIRE MIX
	477 750	1	MAIN BROOM, WIRE
42	479 450	1	LEVER, BROOM
43	479 428	1	IDLER ARM ASSEMBLY
44	479 438	1	ARM WELDMENT, RIGHT
45	479 483	1	SHAFT LEVER, RIGHT
46	479 430	2	BEARING, BALL
47	479 434	1	SPACER
48	479 439	1	GUARD, STRING
49	477 760	1	HUB, IDLER
50	358 959	1	WASHER
51		1	SCREW, HEX HD. 5/16 - 18 X 3/4
52		2	SCREW, PAN HD. 1/4 - 20 X 5/8 W/LKW.



SIDE BROOM ASSEMBLY

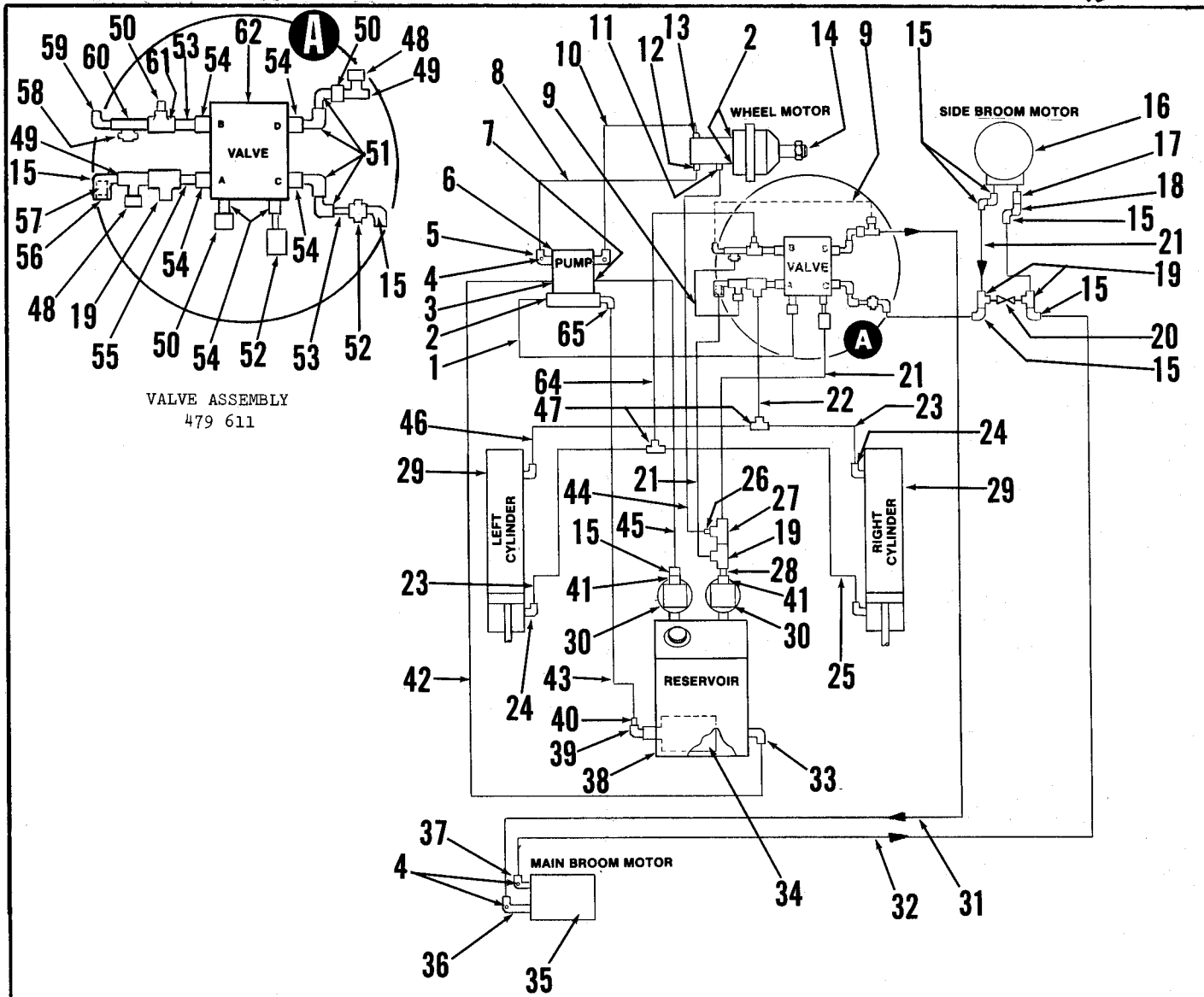
ITEM	PART NO	QTY	DESCRIPTION
1	364 527	1	KNOB
2	479 927	1	LEVER
3		4	SCREW, HEX HD. 1/2 - 13 X 1.00 W/LKW
4	367 206	3	BUSHING
5	367 168	3	BEARING, SLEEVE
6	367 192	3	WASHER
7		2	WASHER, FLAT 1/2
8	481 456	1	BUSHING
9	320 595	2	BUSHING
10		1	SCREW, HEX HD 5/16 - 18 X 1 3/4 WITH FLAT WASHER, LOCKWASHER & HEX NUT
11	479 936	1	BRACKET, LEVER
12		2	PIN, COTTER 1/16 X 1.0
13	481 454	1	ROD, SIDE BROOM
14	479 950	1	SIDE BROOM ASSEMBLY
15	479 690	3	ELBOW, STREET
16	479 771	1	ELBOW, STREET
17	479 769	1	PIPE NIPPLE
18	479 609	1	MOTOR, SIDE BROOM
19		2	SCREW, HEX HD. 1/2 - 13 X 1.0 WITH FLAT WASHER, LOCKWASHER & HEX NUT
20	479 945	1	BRACKET, MOTOR BASE
21		2	SCREW, HEX HD. 1/2 - 13 X 1 3/8 WITH FLAT WASHER, LOCKWASHER & HEX NUT
22	479 948	1	HUB, MOTOR
23	477 732	1	BROOM, SIDE NEW 477812
24		1	SCREW, HEX HD. 1/4 - 20 X 5/8 W/LKW
25		3	SCREW, HEX HD. 5/16 - 18 X 1 1/4 W/F.W.
26		2	SCREW, HEX HD. 3/8 - 16 X 1 3/8 WITH FLAT WASHER, LOCKWASHER & HEX NUT
27	479 867	1	BRACKET, ARM
28		1	NUT, HEX JAM 1/2 - 13
29	479 513	1	SCREW, ADJUSTING
30	479 903	1	BRACKET, MOTOR



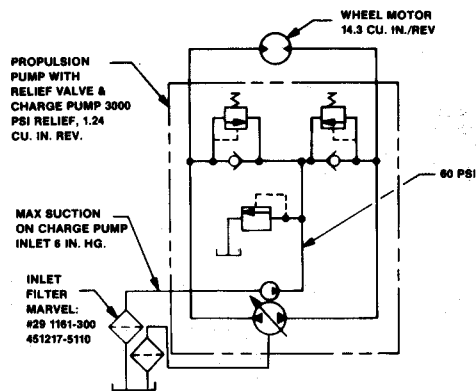
HOPPER ASSEMBLY

ITEM	PART NO	QTY	DESCRIPTION	ITEM	PART NO	QTY	DESCRIPTION
1		4	SCREW, PAN HD. #6-32 X 3/8 WITH SHAKEPROOF WASHER & HEX NUT	70	444 944	16	BEARING, SLEEVE
2	342 564	2	PLATE	71		2	SCREW, SET 1/4 - 20 X 1/4
3	481 909	1	COVER, HOPPER	72	477 574	2	PIN
4	384 708	1	BUSHING, STEP	73	478 778	6	RING, RETAINING
5		2	SCREW, HEX HD. 1/4 - 20 X 7/8 WITH FLAT WASHER & HEX NUT	74	479 057	1	ARM WELDMENT, LEFT
6	449 262	1	LATCH	75	479 060	1	ARM WELDMENT, RIGHT
7	206 784	1	BUSHING		479 090	1	ARM WELDMENT, LEFT
8		10	SCREW, PAN HD. #10-24 X 1/2 WITH FLAT WASHER & SHAKEPROOF WASHER		479 093	1	ARM WELDMENT, RIGHT
9	478 973	1	PANEL, FILTER MOUNT TSB 490, G-II				
10	478 980	1	GASKET				
11	471 122	166	FILTER TUBE ASSEMBLY C/O TSB 490, G-II				
12	471 098	1	GROMMET				
13	471 089	1	TIE, WIRE				
14	471 095	1	SPRING				
15	477 154	1	TUBE, FILTER				
16	478 991	1	SHAKER WELDMENT				
17	159 530	12	WASHER, THRUST				
18	478 781	6	BEARING, SLEEVE				
19	479 000	2	LEVER, SHAKER				
20	151 114	8	WASHER				
21	479 033	4	BEARING, PILLOW BLOCK				
22	478 775	14	RING, RETAINING				
23	479 024	2	LEVER, SHAKER				
24		2	PIN, ROLL 3/16 X 1"				
25	479 036	1	HOPPER				
26	478 958	2	PLATE, NUT				
27	471 194	2	LATCH ASSEMBLY				
28		4	SCREW, PAN HD. #6-32 X 3/8 WITH SHAKEPROOF WASHER				
29	481 901	1	HOPPER DOOR ASSEMBLY C/O				
30	481 905	1	DOOR, HOPPER				
31		8	SCREW 1/4-20 X 5/8 RD. HD. & LKW				
32	481 903	2	HINGE PLATE				
33	449 227	1	GASKET 1/2 X 1/2 X 10'				
34	025 100	1	DECAL, WARNING				
35	481 903	2	PLATE, HINGE				
36		4	SCREW, HEX HD. 1/2 - 13 X 1 1/2				
37	478 963	4	SCREW, SET				
38	370 878	12	BEARING, SLEEVE				
39	360 627	2	BUSHING, SPACER				
40		2	SCREW, HEX HD. 1/2-13 X 1" WITH FLAT WASHER & LOCKWASHER				
41	478 922	2	LINKAGE, HINGE PLATE				
42	478 910	1	PLATE WELDMENT, LEFT				
	478 913	1	PLATE WELDMENT, RIGHT				
43		8	SCREW, HEX HD. 5/8 - 11 X 1 1/4 WITH LOCKWASHER & HEX NUT				
44	478 934	2	LEVER WELDMENT				
45	478 943	2	LEVER WELDMENT				
46		2	PIN, ROLL 1/4 X 1 1/4				
47	479 027	1	STRAP				
48	479 006	1	CAM				
49		2	SCREW SET #10-24 X 3/8				
50	478 931	2	LEVER				
51	479 015	1	PIVOT WELDMENT				
52	250 414	2	BUSHING, FLANGE				
53		4	SCREW, PAN HD. 5/16 - 18 X 1" WITH 2 HEX NUTS EACH				
54	478 976	2	LATCH, STOP				
55		8	SCREW, HEX HD. 1/4 - 20 X 1" WITH LOCKWASHER & NUT				
56	320 317	1	BUSHING				
57		4	SCREW, HEX HD. 5/16 - 18 X 3 1/2 WITH FLAT WASHER, LOCKWASHER & HEX NUT				
58	479 030	1	GASKET				
59	398 618	4	BUSHING				
60	478 487	1	GEAR MOTOR 12 VOLT				
61	441 279	1	KEY, SQUARE 3/16				
62	478 536	1	BRUSH SET, MOTOR				
63	151 270	1	GRIP, HANDLE				
64	479 045	1	LEVER, HANDLE				
65	478 782	1	GASKET				
66	478 872	1	GASKET				
67	479 646	2	CYLINDER, HOPPER				
	479 687	1	CYLINDER REPAIR KIT, COLUMBUS (PAINTED BLACK PRIMER W/WELDED CLEVIS AT ROD END).				
	479 675	1	CYLINDER REPAIR KIT, CESSNA (PAINTED BLACK W/CAST CLEVISES).				
	479 677	1	CYLINDER REPAIR KIT, GREEN CO. (PAINTED BLACK W/DATE & CODE NO. STAMPED ON CLEVIS AT HEAD END).				
68	477 588	12	PIN, COTTER 3/16 X 1 1/2				
69	477 581	4	PIN				

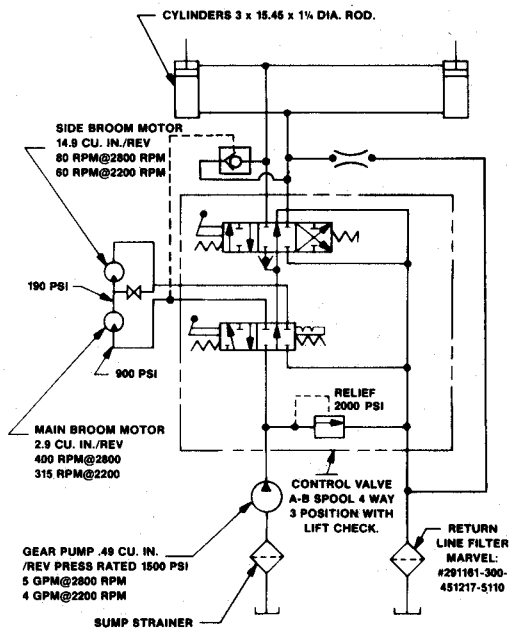
NOV 1982 ¹/₂ OLDER
 KIT # 479677
 NOV 1982 ¹/₂ NEWER
 USE SEAL KIT # 479677



VALVE ASSEMBLY
479 611



(TRACTION DRIVE)

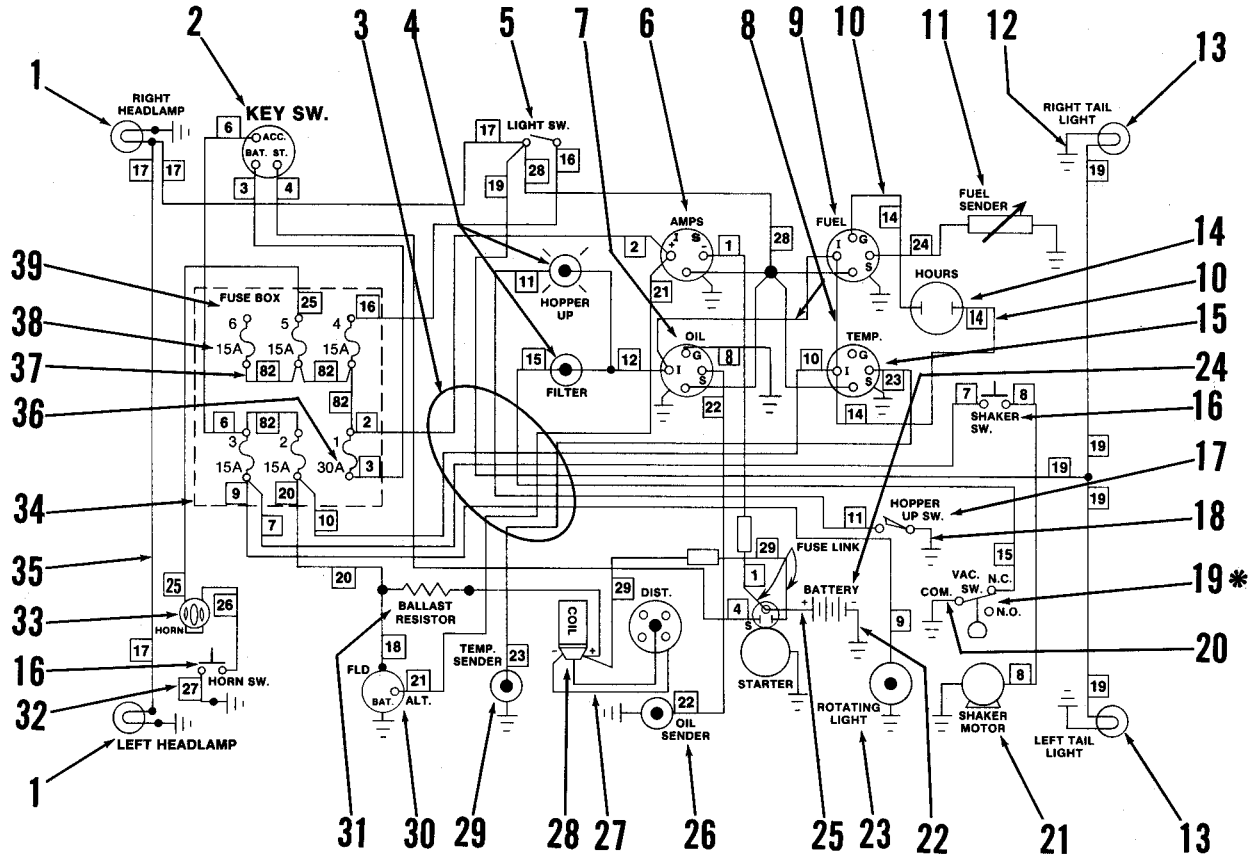


(AUXILIARY SYSTEM)

HYDRAULIC SCHEMATIC

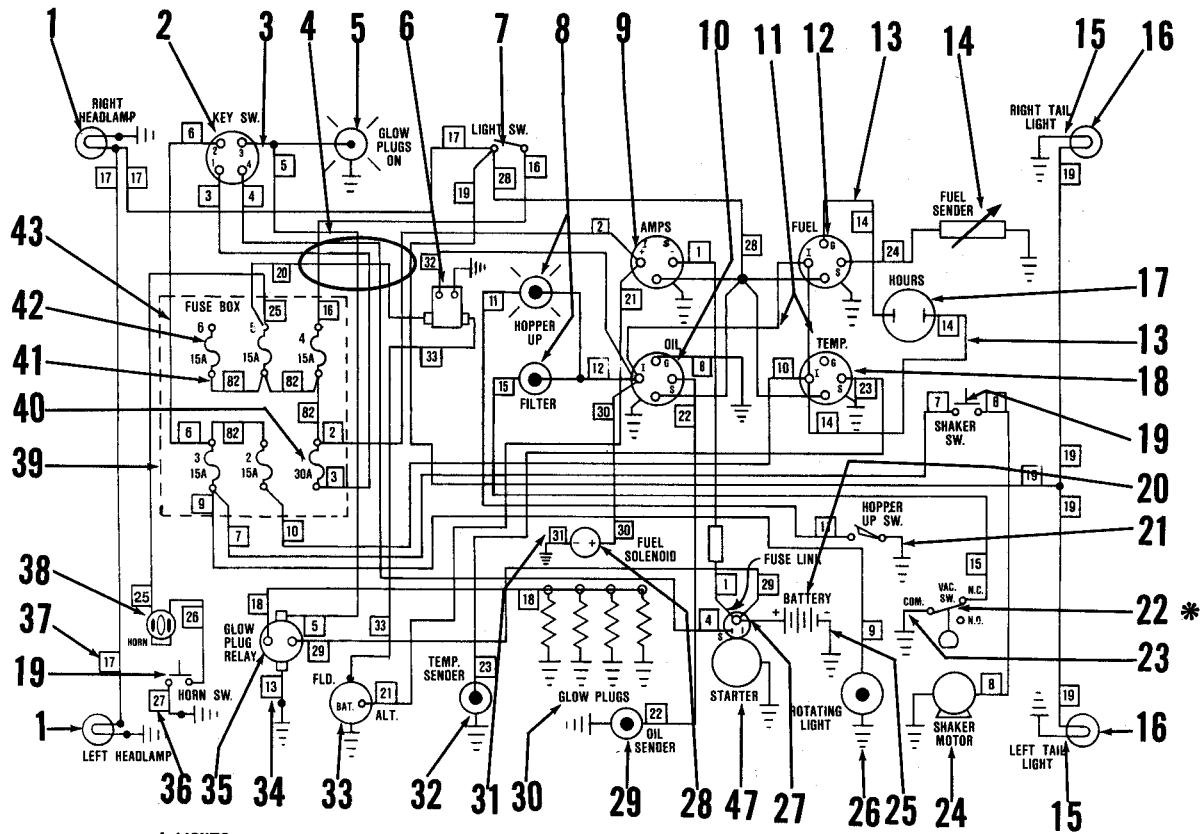
ITEM	PART NO	QTY	DESCRIPTION
1	479 664	1	HOSE ASSEMBLY
2	479 764	3	O-RING
3	479 762	1	O-RING
4	481 546	4	PLUG 1/8-27 NPT
5	481 344	2	ELBOW, MALE
6	479 600	1	PUMP, PROPULSION
7	479 766	1	O-RING
8	456 943	1	HOSE ASSEMBLY (GAS MODEL ONLY)
	456 940	1	HOSE ASSEMBLY (DIESEL MODEL ONLY)
9	481 960	2	HOSE ASSEMBLY
10	456 940	1	HOSE ASSEMBLY (GAS MODEL ONLY)
	456 940	1	HOSE ASSEMBLY (DIESEL MODEL ONLY)
11	456 951	1	ELBOW, STRT THD 45
12	456 953	2	SWIVEL, 90 DEGREE
13	456 947	2	ELBOW, 90 DEGREE
14	456 902	1	MOTOR, WHEEL
15	479 690	7	ELBOW
16	479 609	1	MOTOR, SIDE BROOM
17	479 769	1	NIPPLE
18	479 771	1	ELBOW
19	479 770	4	TEE
20	479 954	1	VALVE, 2- WAY
21	479 666	3	HOSE ASSEMBLY
22	479 668	1	HOSE ASSEMBLY
23	479 680	2	HOSE ASSEMBLY
24	479 704	4	ELBOW
25	479 678	1	HOSE ASSEMBLY
26	456 938	1	ADAPTOR, MALE 1/4 O.D.
27	749 316	1	TEE, STR. 1/2
28	161 039	1	NIPPLE, CLOSE 1/2
29	479 646	2	CYLINDER, HYDRAULIC
30	449 842	2	FILTER ASSEMBLY
	449 843	1	CARTRIDGE, FILTER
31	479 670	1	HOSE ASSEMBLY
32	479 672	1	HOSE ASSEMBLY
33	479 708	1	ELBOW
34	479 654	1	STRAINER, SUMP
35	479 606	1	MOTOR, MAIN BROOM
36	481 342	1	ELBOW, MALE
37	481 340	1	ELBOW, MALE
38	479 626	1	RESERVOIR ASSEMBLY
39	479 716	1	ELBOW
40	479 710	1	REDUCER
41	479 692	2	REDUCER
42	479 686	1	HOSE ASSEMBLY
43	479 684	1	HOSE ASSEMBLY
44	456 955	1	HOSE ASSEMBLY
45	479 662	1	HOSE ASSEMBLY (GAS ONLY)
	479 663	1	HOSE ASSEMBLY (DIESEL ONLY)
46	479 676	1	HOSE ASSEMBLY
47	479 694	2	TEE, MALE
48	481 948	2	CONNECTOR, MALE
49	481 956	2	TEE, STREET 1/2 NPT
50	479 724	3	ADAPTOR, 1/2 x 1/4 ST
51	481 952	5	ELBOW, STREET 1/4
52	479 778	2	REDUCER 1/2 x 1/4 S
53	340 804	3	NIPPLE, 1/4 x 2 BK
54	479 696	6	ADAPTOR 3/8 x 1/4 ST.
55	481 944	1	NIPPLE, REDUCING
56	479 780	1	BUSHING, .12 x .50 x .25
57	228 142	1	SPRING, COMPRESSION
58	481 950	1	CONNECTOR, MALE 1/4
59	481 946	1	ELBOW, MALE
60	481 954	1	CHECK VALVE
61	481 958	1	TEE, STREET 1/4 NPT
62	479 612	1	VALVE, CONTROL
63	477 988	2	LINKAGE (NOT SHOWN)
64	479 682	1	HOSE ASSEMBLY
65	479 700	1	ELBOW, MALE

FUSES:
 1. MAIN
 2. INSTRUMENTS, ALT. FIELD
 3. SHAKER, ROTATING LIGHT
 4. LIGHTS
 5. HORN
 6.



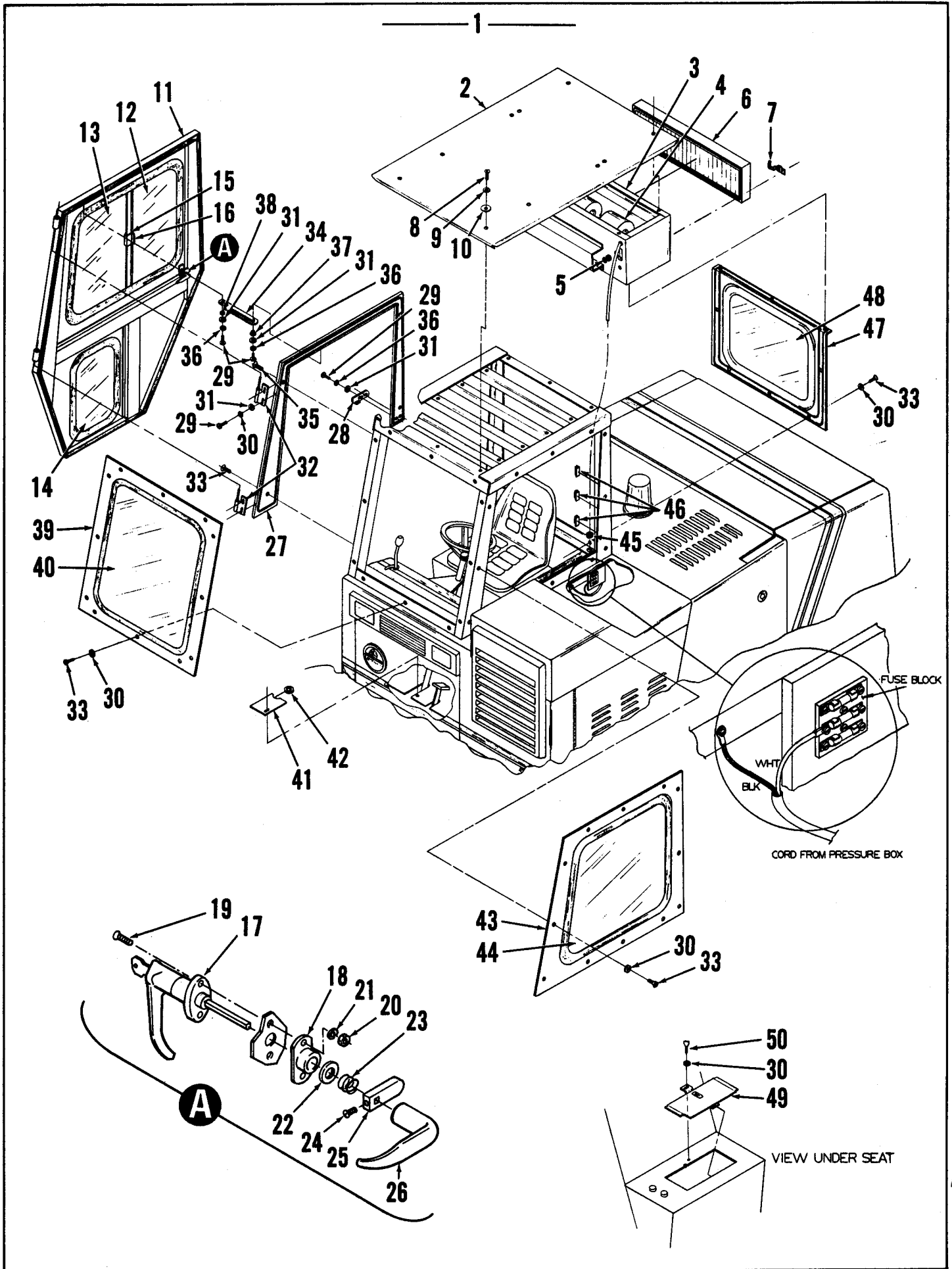
ITEM	PART NO	QTY	DESCRIPTION	ITEM	PART NO	QTY	DESCRIPTION
1	481 543	1	HEADLAMP ASSEMBLY	38	478 271	5	FUSE 15 AMP
2	478 640	1	SWITCH, IGNITION	39	441 961	2	BLOCK, FUSE
3	478 252	1	HARNESSE ASSEMBLY	40	300 152	14	CORD CLAMP (NOT SHOWN)
4	456 544	2	LIGHT, INDICATOR 12V	41	478 246	10	CABLE TIE (NOT SHOWN)
5	207 075	1	SWITCH, TOGGLE				
6	489 590	1	METER, AMP				
7	489 587	1	GAUGE, OIL PRESSURE				
8	301 335	2	WIRE ASSEMBLY #14 X 7.75				
9	489 584	1	GAUGE, FUEL LEVEL				
10	478 247	2	WIRE ASSEMBLY #14 X 6.0				
11	478 358	1	SENDER, FUEL				
12	481 511	2	WIRE ASSEMBLY #14 X 8.0				
13	481 553	2	SOCKET				
	481 551	2	BULB, LIGHT				
	489 544	2	LENS, RED				
	489 550	2	GASKET, LENS				
14	478 361	1	METER, HOUR				
15	489 581	1	GAUGE, TEMPERATURE				
16	441 555	2	SWITCH, START (HORN & SHAKER)				
17	171 225	1	SWITCH, SNAP				
18	481 507	1	WIRE ASSEMBLY #14 X 6.0				
19	478 090	1	SWITCH, VACUUM (* FOR T.U.V. USE ONLY)				
20	481 505	1	WIRE ASSEMBLY #14 X 8.0				
21	478 487	1	MOTOR, SHAKER				
22	478 267	1	CABLE, BATTERY NEG.				
23	489 639	1	LIGHT, ROTATING				
24	478 265	1	BATTERY 12V				
25	478 265	1	CABLE, BATTERY 12V				
26	478 698	1	SENDER, OIL				
27	480 695	1	WIRE, HIGH TENSION				
28	480 691	1	COIL ASSEMBLY				
29	481 888	1	SENDER, TEMPERATURE				
30	478 483	1	ALTERNATOR - REG.				
31	480 699	1	BALLAST RESISTER				
32	478 259	1	WIRE ASSEMBLY #14 X 10.0				
33	442 054	1	HORN 12V				
34	481 547	1	TERMINAL BOARD				
35	481 509	1	WIRE ASSEMBLY #14 X 66.00				
36	489 621	1	FUSE, 30 AMP				
37	489 685	4	WIRE ASSEMBLY				

ELECTRICAL SCHEMATIC-GAS MODEL



- FUSES:
 1. MAIN
 2. INSTRUMENTS, ALT. FIELD
 3. SHAKER, ROTATING LIGHT
 4. LIGHTS
 5. HORN
 6.

ITEM	PART NO	QTY	DESCRIPTION	ITEM	PART NO	QTY	DESCRIPTION
1	481 543	2	HEADLAMP ASSEMBLY	35	481 269	1	GLOW PLUG RELAY
2	481 255	1	GLOW PLUG START - AID & SWITCH	36	478 259	1	WIRE ASSEMBLY #14 x 10.0
3	489 657	1	WIRE ASSEMBLY	37	481 509	1	WIRE ASSEMBLY #14 x 56.00
4	481 545	1	HARNES ASSEMBLY	38	442 054	1	HORN 12V
5	456 466	1	LIGHT, PILOT	39	481 547	1	TERMINAL BOARD
6	502 146	1	RELAY	40	489 621	1	FUSE, 30 AMP
7	207 075	1	SWITCH, TOGGLE	41	489 685	4	WIRE ASSEMBLY
8	456 544	2	LIGHT, INDICATOR	42	478 271	5	FUSE 15 AMP
9	489 590	1	METER, AMP	43	441 961	1	FUSE BLOCK (ENGINE BLOCK
10	489 587	1	GAUGE, OIL PRESSURE	44	481 503	1	CABLE ASSEMBLY - NOT SHOWN)
11	301 335	2	WIRE ASSEMBLY #14 x 7.75	45	300 152	14	CORD CLAMP (NOT SHOWN)
12	489 584	1	GAUGE, FUEL	46	478 246	10	CABLE TIE (NOT SHOWN)
13	478 247	2	WIRE ASSEMBLY #14 x 6.0	47	481 265	1	STARTER
14	478 358	1	SENDER, FUEL LEVEL				
15	481 511	2	WIRE ASSEMBLY #14 x 8.0				
16	481 553	2	SOCKET, TAIL LIGHT				
	481 551	2	BULB, LIGHT				
	489 544	2	LENS, RED				
	489 550	2	GASKET, LENS				
17	478 361	1	METER, HOUR				
18	489 581	1	GAUGE, TEMPERATURE				
19	441 555	2	SWITCH, START (HORN & SHAKER)				
20	206 962	1	BATTERY 12V				
21	388 019	1	SWITCH, SNAP SPST				
22	478 090	1	SWITCH, VACUUM (* FOR T.U.V. USE ONLY)				
23	481 505	1	WIRE ASSEMBLY #14 x 8.0				
24	478 487	1	MOTOR, SHAKER				
25	478 267	1	CABLE, BATTERY - NEG.				
26	489 639	1	LIGHT, ROTATING				
27	481 501	1	CABLE, BATTERY - POSITIVE				
28	481 253	1	SOLENOID, STOP CONTROL				
29	478 698	1	SENDER, OIL				
30	481 267	4	GLOW PLUG 12V				
31	481 513	1	WIRE ASSEMBLY				
32	481 888	1	SENDER, TEMPERATURE				
33	478 483	1	ALTERNATOR - REGULATOR				
34	478 257	1	WIRE ASSEMBLY #14 x 8.0				



ITEM	PART NO.	QTY.	DESCRIPTION
1	481 808	1	CAB (Includes Items 1 thru 50)
2	481 828	1	ROOF ASSEMBLY
3	481 789	1	PRESSURE BOX ASSEMBLY (Includes Items 3 thru 7)
4	481 794	1	BLOWER 12V
5	481 854	1	SWITCH, 3 Speed
6	481 838	1	FILTER ASSEMBLY, <i>Filter Only 481 814</i>
7	481 836	2	FASTNER, Snap
8		12	SCREW, Truss Hd. 1/4-20 X 1
9	151 114	10	WASHER, .265 X .90 X .06
10	154 776	10	WASHER
11	481 787	1	DOOR ASSEMBLY (Includes Items 9 thru 26)
12	481 670	1	WINDOW, Sliding Door
13	481 668	1	WINDOW, Fixed Door
14	481 666	1	WINDOW, Door
15	481 747	1.5"	GASKET, Handle
16	481 746	1	HANDLE, Locking
17	481 872	1	HANDLE, Locking
18	481 866	1	PLATE
19		2	SCREW, 10-24 X .75 Oval Hd.
20		2	NUT, Hex 10-24
21		2	LOCKWASHER, #10
22		1	WASHER, 7/16
23	481 880	1	SPRING, .60 X 625
24		1	SCREW, 10-24 X .38 Round Hd.
25	481 868	1	LATCH, Adjustable
26	481 874	1	HANDLE
27	481 793	1	DOOR FRAME ASSEMBLY
28	481 876	1	LATCH, Weldment
29		6	SCREW, Pan Hd. 1/4-20 X .50
30	481 830	32	WASHER .25
31		10	WASHER .25
32	481 739	2	HINGE, Weldment
33		32	SCREW, Oval Hd. 1/4-20 X .75
34	481 878	1	LATCH
35		4	SCREW, Flat Hd. 1/4-20 X 1.25
36		8	LOCKWASHER, .25
37	384 708	1	BUSHING, Step
38	206 784	1	BUSHING
39	481 805	1	FRONT WINDOW ASSEMBLY (Includes Item 40)
40	481 664	1	WINDOW, Front
41	481 832	1	COVER ASSEMBLY
42	344 621	1	GROMMET
43	481 803	1	LEFT WINDOW ASSEMBLY (Includes Item 44)
44	481 660	1	WINDOW, Left
45	327 409	1	BUSHING, Nylon
46	467 428	3	U-CLIP
47	481 811	1	REAR WINDOW ASSEMBLY (Includes Item 48)
48	481 662	1	WINDOW, Rear
49	481 834	1	BATTERY COVER ASSEMBLY
50	481 858	1	SCREW, Thumb 10-24 X .50