



# Electronic Service Manuals

This electronic document is provided as a service to our customers. We do not create the contents of the information contained in this document. Should you have detailed questions pertaining to the information contained in this document, you may contact Michco, or the manufacturer which provided the original information in this electronic deliverable. Michco's only part in this electronic deliverable was the electronic assembly process.

You may contact Michco through the following methods:  
Phone (517) 484-9312 or (800) 331-3339 MI, OH, IN only  
2011 N. High St. -- Lansing, Michigan -- 48906  
Fax: (517) 484-9836  
Email: [CustServ@Michco.com](mailto:CustServ@Michco.com)  
Web site: [www.Michco.Com](http://www.Michco.Com)  
Parts Web site: [www.FloorMachineParts.Com](http://www.FloorMachineParts.Com)

Order Parts on Line at:  
**[www.FloorMachineParts.Com](http://www.FloorMachineParts.Com)**

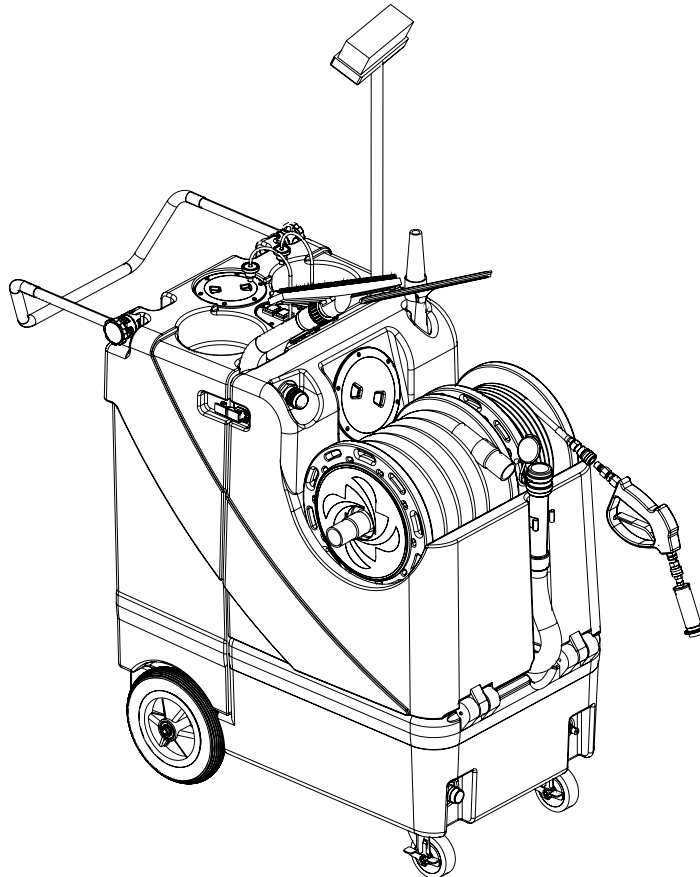
Directly to Parts & Service:  
By Email: **[Shop@Michco.com](mailto:Shop@Michco.com)**  
By Fax: (517) 702-2041  
By Voice: Use numbers above.

**Serving the Cleaning Industry Since 1922**

Notice: All copyrighted material remains property of original owners, all trademarks are property of respective owners. Manuals are subject to Manufacturer's reproduction limitations. Originals or reproductions were provided by manufacturers through a request. We make no warranty as to the correctness of information provided in this document and you assume all risk.

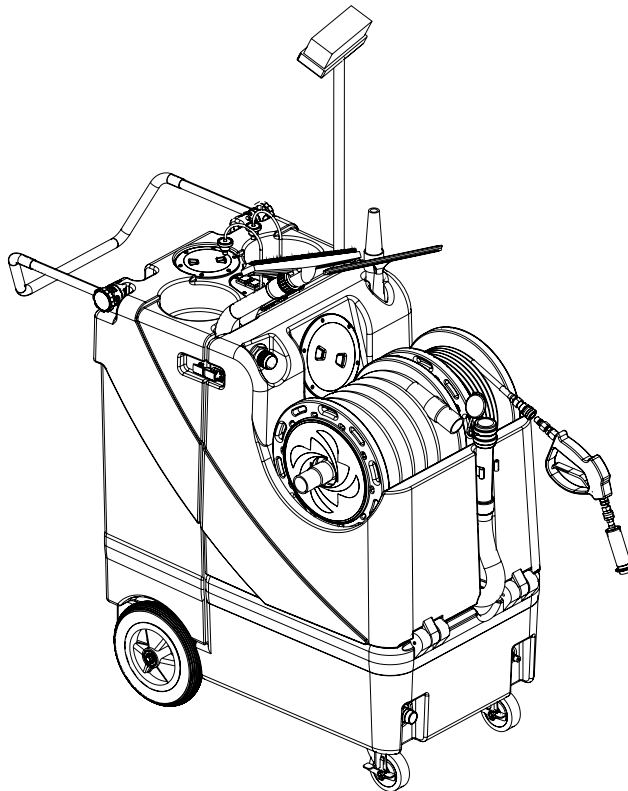
# Reel Cleaner™

---



## PARTS LIST Advance MODEL 56108050





<u>DESCRIPTION</u>	<u>PAGE</u>
Base Assembly .....	2-3
Recovery Tank .....	4-5
Solution Tank .....	6-7
Tools / Accessories .....	8-9
Wiring Diagram .....	9

#### WHEN ORDERING PARTS

- \* Use the 8 digit numbers from the "Ref. No." columns in this parts list.
- \* Specify the model and serial number of the machine.
- \* Use the space below to record the model and serial number for future reference.

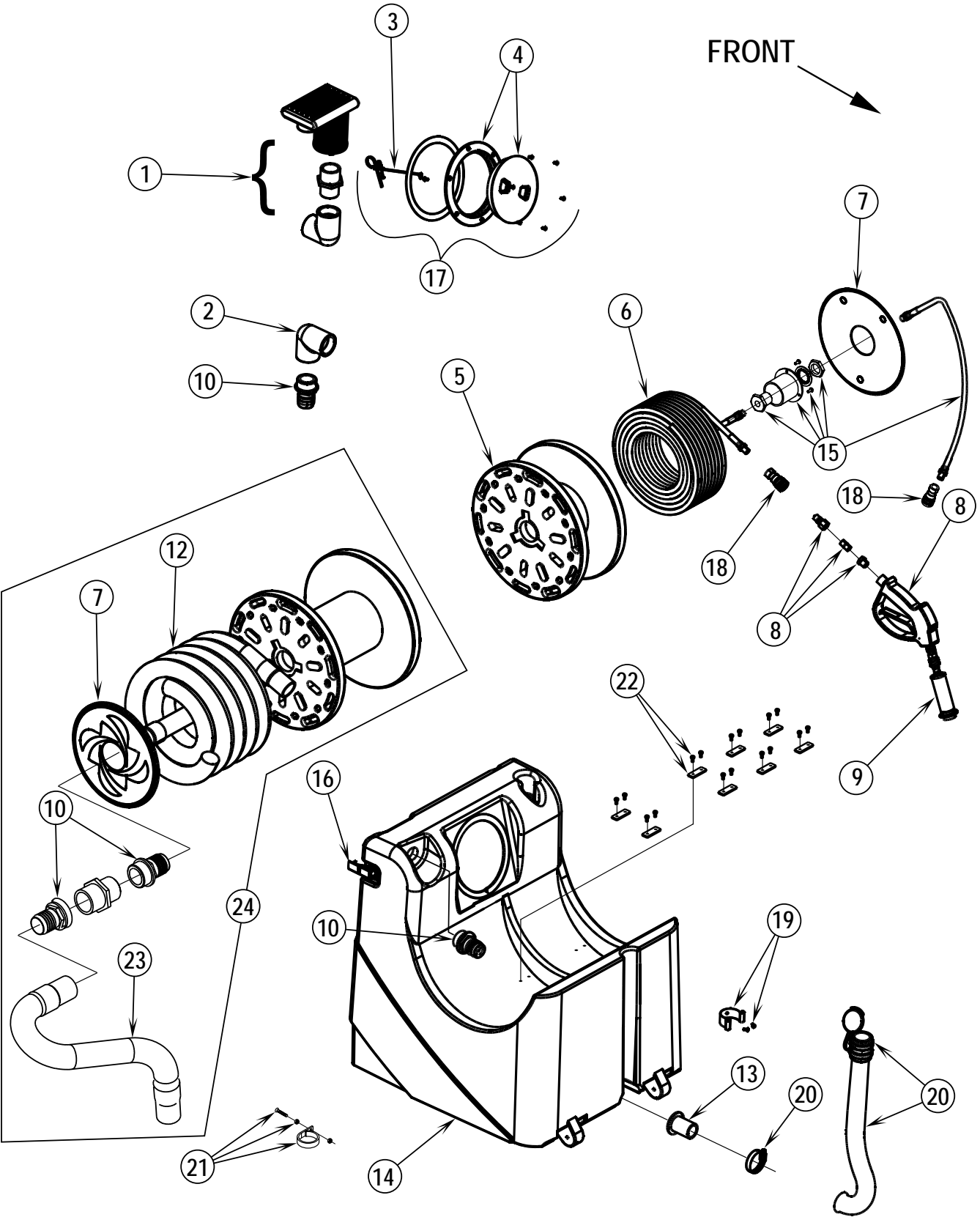
Model \_\_\_\_\_ Serial No. \_\_\_\_\_



Item	Ref. No.	Qty	Description	Item	Ref. No.	Qty	Description
1	56108032	1	Hose Vacuum, 38" with Cuffs	18	56108031	1	Vacuum Motor Kit (kit includes)
2	56108033	1	Hose Vacuum, 2" x 24"		NA	1	Vacuum Motor, 3 Stage
3	56108034	1	Base		NA	1	Gasket, Vacuum
4	56108035	1	PVC Adapter	*	56260950	1	Replacement Carbon Brushes for Vacuum Motor (set of 2)
5	56108036	1	Gasket, 1/4" x 1/2" x 7'	19	56108095	1	Vacuum Manifold Kit (kit includes)
6	56108037	2	Hinge Pin		NA	1	Manifold, Vacuum
7	56108038	1	Hose Barb		NA	1	Boss, 1-1/2" Spin Weld
8	56108039	1	Receptacle, Power Cord	20	56108096	1	Fan Kit (kit includes)
9	56108040	1	Motor, Pump, 120V		NA	1	Fan, 100 CFM, 120V
10	56108041	1	Cam / Bearing Assy		NA	1	Guard, Fan
11	56108042	1	In-Line Filter	21	56108097	1	Caster Kit (kit includes)
12	56108043	1	Valve, Pressure Regulator, 600 PSI		NA	1	Caster, 4"
13	56108044	1	Axle Rod, 22-13/16"		NA	4	Washer, Flat, 3/16
14	56108046	1	Base Hardware Kit (kit includes)		NA	4	Lock Nut
	NA	3	Bolt, 1/4-20 x 5"		NA	1	Brake, Caster
	NA	3	Washer, Split Lock, 1/4	22	56108098	1	Injector Kit (kit includes)
	NA	16	Bolt 1/4-20 x 3/4"		NA	1	Injector, Chemical
	NA	4	Screw, 6-32 x 2"		NA	2	Reducer, Brass, 3/8 P.T.
	NA	22	Lock Nut	23	56108099	1	Wheel Kit (kit includes)
	NA	3	Nut, Finish, 1/4-20		NA	1	Wheel, 10"
	NA	28	Washer, Flat		NA	1	Axle Cap
	NA	1	Washer, Flat	24	56108045	2	Clamp, Wire
15	56108047	1	Clamp Kit (kit includes)	*	56108092	2	Decal, Advance Reel Cleaner
	NA	2	Hose Clamp	**	56108090	1	Pump Rebuild Kit, Valves & Rings
	NA	3	Hose Clamp	**	56108091	1	Pump Rebuild Kit, Plunger & Seals
	NA	6	Hose Clamp	**	56108089	1	Pump Complete with Brass (kit includes #10, 12 & items below)
16	56108048	1	Hose Kit (kit includes)		NA	1	Pump, No Brass 300 PSI
	NA	1	Hose, Solution 1/4" I.D. x 61"		NA	1	Plug, Brass 1/4 NPT
	NA	1	Hose, Outlet, 1/4" x 49"		NA	1	Quick Disconnect, Male 1/8 NPT
	NA	1	Hose, Inlet, 1/2" x 9"		NA	1	Bushing, Brass 1/4 NPT Male
	NA	1	Hose, 3/8" x 20"		NA	1	Hose Barb 1/4 Pipe x 1/2
	NA	1	Hose, Inlet, 1/2" x 15"		NA	2	Elbow, Brass 90° 1/4 M
17	56108049	1	Quick Disconnect Kit (kit includes)		NA	1	Nipple, SS 1/4 NPT
	NA	2	Washer, Brass		NA	2	Hose Barb, Brass Male 1/4
	NA	1	Quick Disconnect, Male, 1/4 NPT				
	NA	2	Hose Barb / Elbow, Nylon				
	NA	1	Quick Disconnect, Female, 1/8 NPT				
	NA	1	Plug, Brass, 1/4 NPT				
	NA	1	Quick Disconnect, Male, 1/8 NPT				
	NA	1	Bushing, Brass, 1/4 NPT				
	NA	1	Hose Barb, 1/4 Pipe x 1/2				
	NA	2	Elbow Brass, 90 Degree, 1/4 M				
	NA	1	Nipple SS, 1/4 NPT				
	NA	2	Hose Barb, Brass				
	NA	1	Hose Barb, Nylon				

\* = Not Shown

\*\* = Optional



03-4	<b>RECOVERY TANK</b>			
04-9	<b>Reel Cleaner™</b>			<b>5</b>

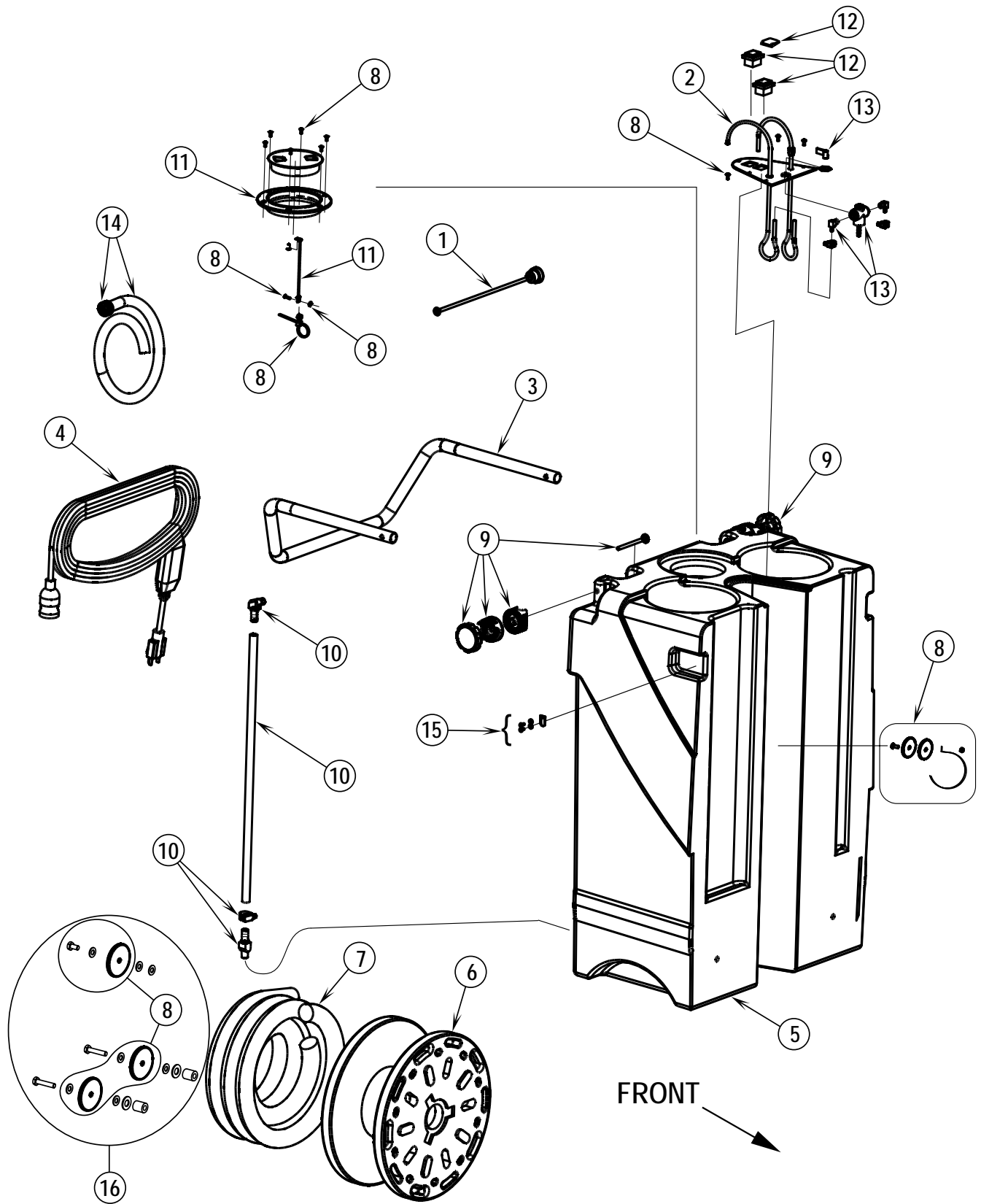
Item	Ref. No.	Qty	Description
1	56108052	1	Vacuum Manifold Assembly
2	56108053	1	PVC Elbow
3	56108054	1	Chain, 8"
4	56108055	1	Lid, 6" with Clear Center, and Ring
5	56108056	1	Reel, Solution Hose (includes Hub Cap & Flanges)
6	56108057	1	Hose, Solution, 1/4" x 50' for replacement on machines before SN 1689362 order Kit 56108010
7	56108058	2	Hub Cap
8	56108072	1	Spray Gun, Complete
9	56108060	1	Spray Tip, Variable
10	56108061	4	Hose Barb
12	56108006	1	Hose, Vacuum, w/Cuffs, 1.6" x 35' (5:1)
13	56108064	1	Boss, Spin Weld, 1-1/2"
14	56108065	1	Recovery Tank
15	56108015	1	Swivel Hose Kit (kit includes)
	NA	1	Bulkhead Fitting, 1/4 Male & Female NPT
	NA	3	Screw, Hi-Low #8 x 1/2
	NA	1	Swivel Cup, Flanged
	NA	1	Hose, Solution 1/4 I.D. x 40"
	NA	1	Quick Disconnect Female, 1/4 NPT
	NA	1	Tubing, Black 3/4" I.D. x 1" O.D. x 4" Lg.
16	56108074	2	Latch, Rubber, Black, with Strike <b>Note #1</b>
17	56108068	1	Recovery Lid Kit (kit includes items #3, #4 & below)
	NA	1	Chain, 8" (item #3)
	NA	1	Gasket
	NA	1	Lid, 6" with Clear Center, and Ring (item #4)
	NA	6	Screw, Lid Ring, 8-32 x 7/8"
18	56108014	2	Quick Disconnect, Female 1/4 NPT
19	56108070	1	Recovery Hose Clamp Kit (kit includes)
	NA	1	Hose Clamp, Plastic
	NA	2	Screw, Tapping #8 x 5/8"
20	56108071	1	Dump Hose Kit (kit includes)
	NA	1	Hose Clamp 2 1/4"
	NA	1	Cap, Dump Hose 1 1/2"
	NA	1	Hose, Dump 1-1/2" x 24"
21	56108013	1	Recovery Hose Clamp Kit
	NA	1	Screw, 8-32 x 7/8", SS
	NA	2	Lock nut, 8-32, SS
	NA	1	Clamp, Self closing, 1-1/2"
**	56108073	1	Solution Hose, Complete
*	56108093	1	Warning Label
22	56108009	1	Glide Kit, Teflon (kit includes)
	NA	8	Glide, 1/2" Wide
	NA	16	Screws #6 x 1/4 Panhead
**	56108010	1	Solution Hose with Swivel Kit (kit includes #6 and items below)
	NA	1	Bulkhead Fitting, 1/4 Male & Female NPT
	NA	1	Swivel Cup, Flange
	NA	1	Hose, Solution 1/4 ID x 40" 2750 PSI @ 212° F (black)
	NA	1	Tubing, Black 3/4" ID x 1" OD x 4" LG
23	56108005	1	Hose, Vacuum W/Cuffs 1-1/2" x 21"
24	56108007	1	Recovery Hose & Reel Kit (kit includes #7, 12, 23 and items below) <b>NOTE #2</b>
	NA	2	Hose Barb Fitting, Plastic
	NA	1	Coupling, 1-1/2 x 1-1/2FPT, PVC
	NA	1	Reel, Vacuum Hose

\* = Not Shown

\*\* = Optional

**Note #1:** The latch is shown in this assembly drawing, the strike is shown in "Solution Tank" drawing.

**Note #2:** The Recovery Hose & Reel Kit is used as of serial number 1776131 but can be used on prior models.



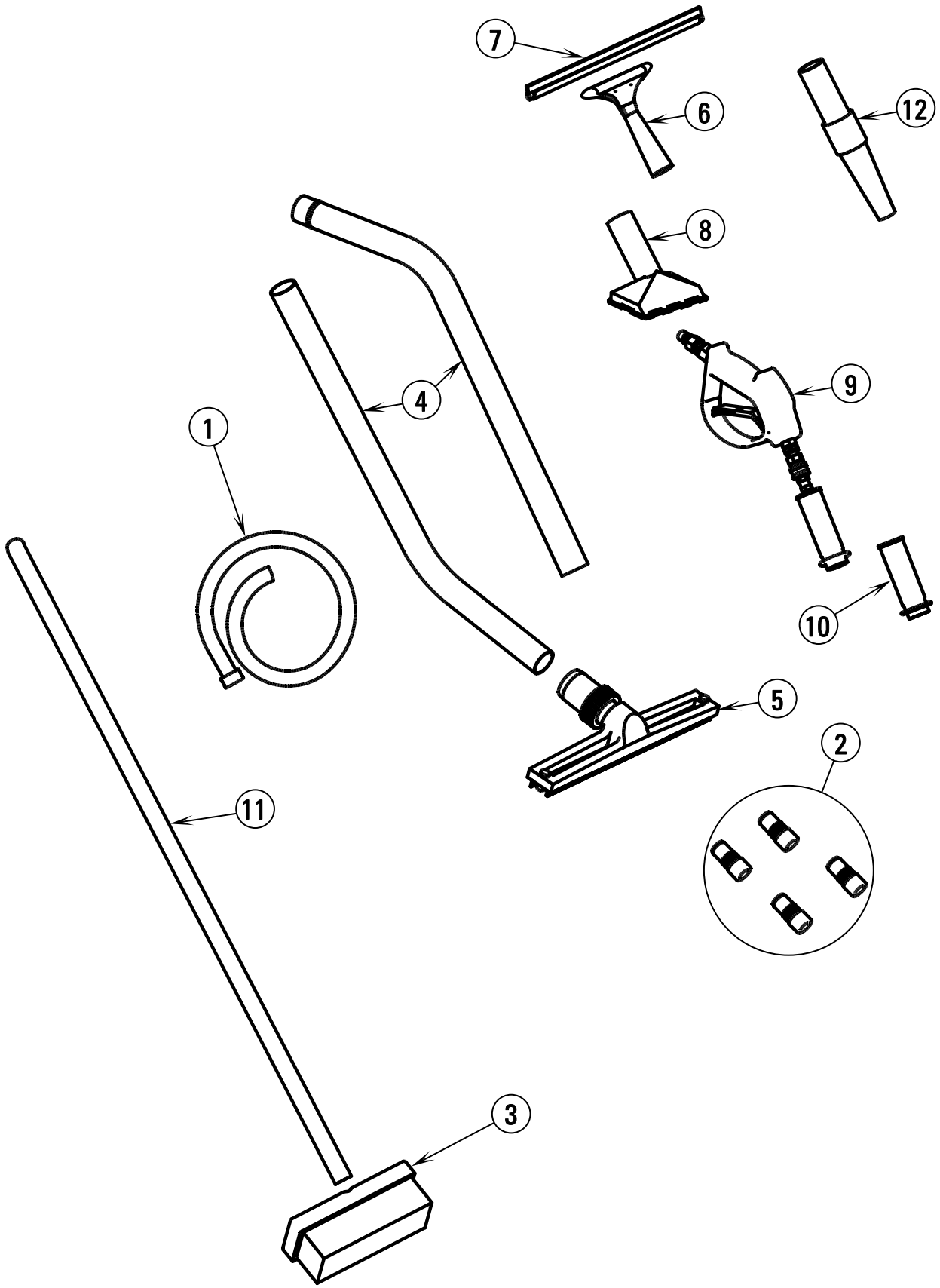
03-4	<b>SOLUTION TANK</b>			
04-9	<b>Reel Cleaner™</b>			<b>7</b>

Item	Ref. No.	Qty	Description
1	56108075	2	Cap & Tubing Chemical Feed
2	56108076	2	Hose, 1/4" I.D. x 30"
3	56108077	1	Handle, Pivoting
4	56108078	1	Power Cord w/GFI, 12/3 x 50'
5	56108079	1	Tank, Light Gray
6	56108080	1	Reel, Blower
7	56108081	1	Hose, Vacuum, 1-1/4" x 13'
8	56108082	1	Solution Tank Hardware Kit (kit includes)
	NA	1	Washer, Flat, Rubber, 1/4" I.D. x 3/4" O.D.
	NA	1	Washer, Flat, 1/4" I.D. x 1" O.D.
	NA	1	Lock Nut
	NA	6	Screw, Lid Ring 8-32 x 7/8"
	NA	1	Clamp, SS, Insulated
	NA	1	Screw, 10-32 x 5/8"
	NA	1	Wire Tie
	NA	5	Screw, #4 x 3/8
	NA	3	Retainer, Reel
	NA	3	Washer, Flat
	NA	3	Bolt, 1/4-20 x 3/4"
9	56108083	1	Handle Knob Kit (kit includes)
	NA	2	Bolt, Carriage, 5/16-18 x 3-1/2"
	NA	2	Locking Mechanism, Tank
	NA	2	Locking Mechanism, Handle
	NA	2	Knob, Handle Lock
10	56108084	1	Solution Hose Kit (kit includes)
	NA	1	Hose Barb, Nylon Straight 1/2" NPT
	NA	1	Hose Barb / Elbow, 90 Degrees, Nylon, 1/2" Barb
	NA	1	Hose, 1/2 I.D. x 3/4 O.D. x 24.5"
	NA	1	Hose Clamp 3/8" - 7/8"
11	56108085	1	Solution Lid Kit (kit includes)
	NA	1	Lid, 4" with Clear Center, and Ring
	NA	1	Chain, 8"
12	56108086	1	Switch Kit (kit includes)
	NA	2	Switch, 120V
	NA	2	Splash Guard, Switch Cover
13	56108087	1	Solution Valve Kit (kit includes)
	NA	1	Valve, with Position Knob
	NA	2	Elbow / Hose Barb, Brass
14	56108088	1	Hose Fill Kit (kit includes)
	NA	1	Hose, Fill White 1/2 I.D. x 3/4 O.D. x 5 ft.
	NA	1	Adapter, Faucet
15	56108074	2	Latch, Rubber, Black, with Strike <b>Note 1</b>
16	56108008	1	Blower Hose Reel Tab Kit (kit includes)
	NA	3	Retainer, Reel
	NA	3	Washer, Flat 3/16
	NA	1	Bolt, 1/4-20 x 3/4"
	NA	2	Bolt, 1/4-20 x 1-3/4"
	NA	4	Washer, Nylon Black, 1/4" ID
	NA	2	Retainer Spacer, 3/4" OD x .035W x 1" LG
	NA	2	Washer, Flat 1/4" ID x 1" OD
	NA	1	Instruction Sheet for retainer

\* = Not Shown

\*\* = Optional

**Note 1:** The strike is shown in this assembly drawing, the latch is shown in "Recovery Tank" drawing.

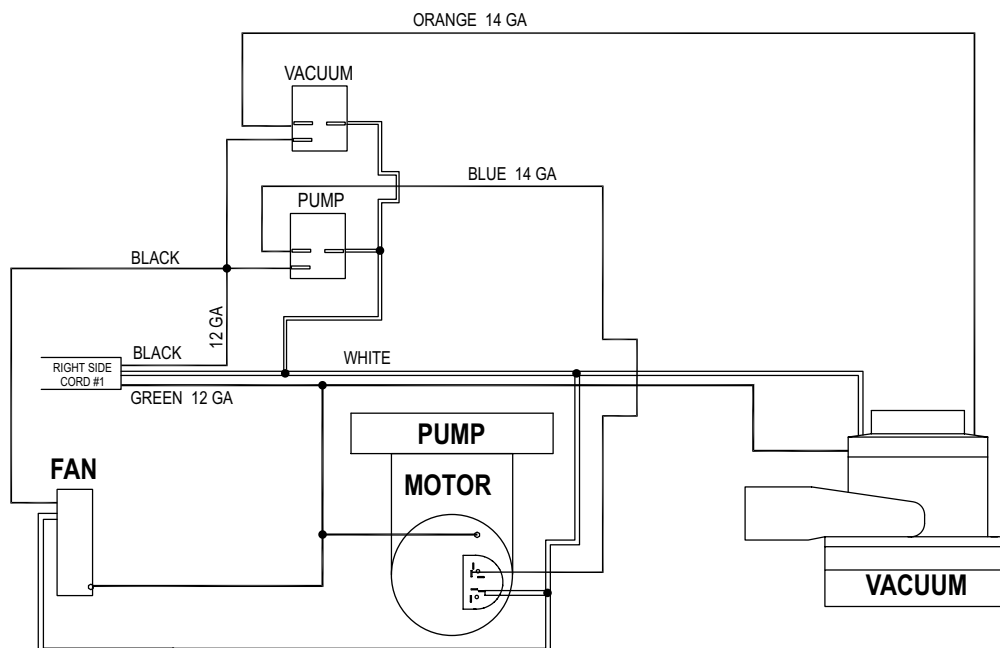


Item	Ref. No.	Qty	Description
1	56108024	1	Priming Hose, 3/8" I.D. x 4.5' long with Quick Disconnect
2	56108030	1	Metering Tip Kit (4 pieces) Table 1 below
3	56108026	1	Brush, Scrub
4	56108027	1	Wand, 2 pieces, Aluminum
5	56108028	1	Floor Squeegee Tool, 14"
6	56108018	1	Quick Release Aluminum Squeegee Handle
7	56108017	1	12" Aluminum Channel w/ Rubber Blade
8	56108029	1	Drain Tool, 5"
9	56108072	1	Spray Gun Complete
10	56108060	1	Spray Tip, Variable
11	56108022	1	Handle, Aluminum, 4ft.
12	56108066	1	Nozzle, Blower, Rubber
**	56108094	1	Grout Scrub Brush
**	56108021	1	Dry Caddy Bag
**	56108025	1	Extraction Tool Adapter Kit
**	56108016	1	Replacement Rubber Soft Blade – 12 Pack
**	56108011	1	Squeegee Service Kit

\*\* = Optional

Table 1

Metering Tips		
Color	Size	Flow Rate
Red Purple	0.007	1/2 oz. per gallon
Light Purple	0.009	1 oz. per gallon
Purple	0.014	2 oz. per gallon
Yellow	0.020	4 oz. per gallon



Item	Ref. No.	Qty	Description
	56108096	1	Fan Kit
	56108040	1	Motor, Pump, 120V
	56108031	1	Vacuum Motor Kit
*	56260950	1	Replacement Carbon Brushes for Vacuum Motor (set of 2) (not shown)
	56108086	1	Switch Kit (includes two switches: one pump switch & one vacuum switch)
	56108078	1	Power Cord w/GFI, 12/3 x 50' (not shown)

\* = Not Shown



**Nilfisk  
Advance**

*setting standards*

Nilfisk-Advance, Inc.  
14600 21st Avenue North  
Plymouth, MN 55447-3408  
[www.nilfisk-advance.com](http://www.nilfisk-advance.com)  
Phone: 800-989-2235  
Fax: 800-989-6566  
©2004 Printed in the U.S.A.