



Electronic Service Manuals

This electronic document is provided as a service to our customers. We do not create the contents of the information contained in this document. Should you have detailed questions pertaining to the information contained in this document, you may contact Michco, or the manufacturer which provided the original information in this electronic deliverable. Michco's only part in this electronic deliverable was the electronic assembly process.

You may contact Michco through the following methods:
Phone (517) 484-9312 or (800) 331-3339 MI, OH, IN only
2011 N. High St. -- Lansing, Michigan -- 48906
Fax: (517) 484-9836
Email: CustServ@Michco.com
Web site: www.Michco.Com
Parts Web site: www.FloorMachineParts.Com

Order Parts on Line at:
www.FloorMachineParts.Com

Directly to Parts & Service:
By Email: **Shop@Michco.com**
By Fax: (517) 702-2041
By Voice: Use numbers above.

Serving the Cleaning Industry Since 1922

Notice: All copyrighted material remains property of original owners, all trademarks are property of respective owners. Manuals are subject to Manufacturer's reproduction limitations. Originals or reproductions were provided by manufacturers through a request. We make no warranty as to the correctness of information provided in this document and you assume all risk.



Hurricane 700E

FORM NO. 042082

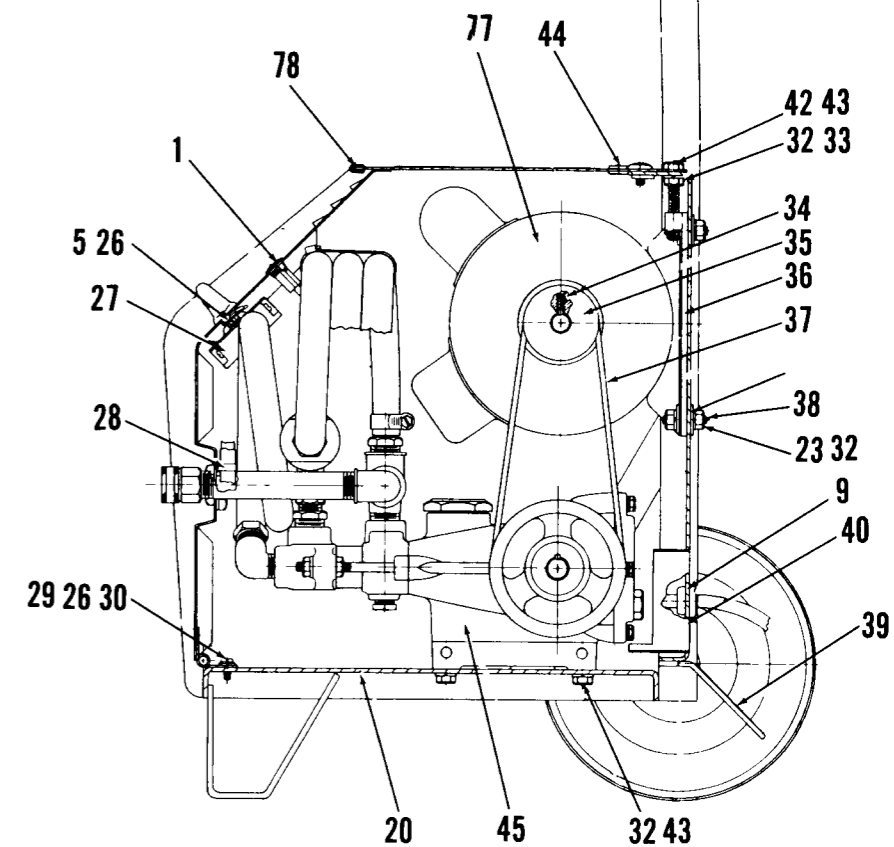
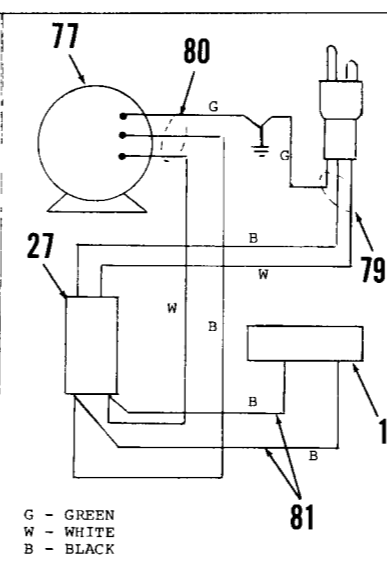
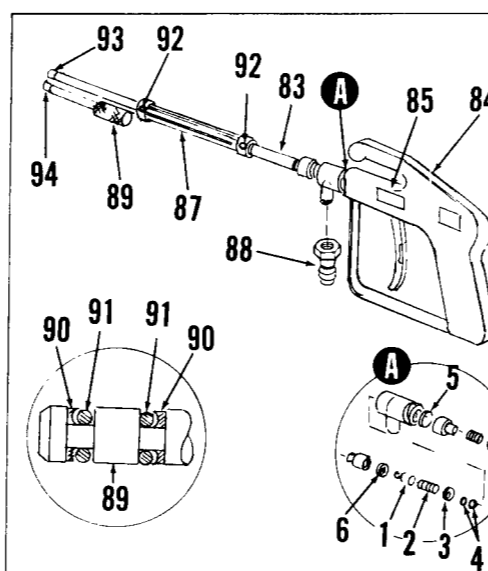
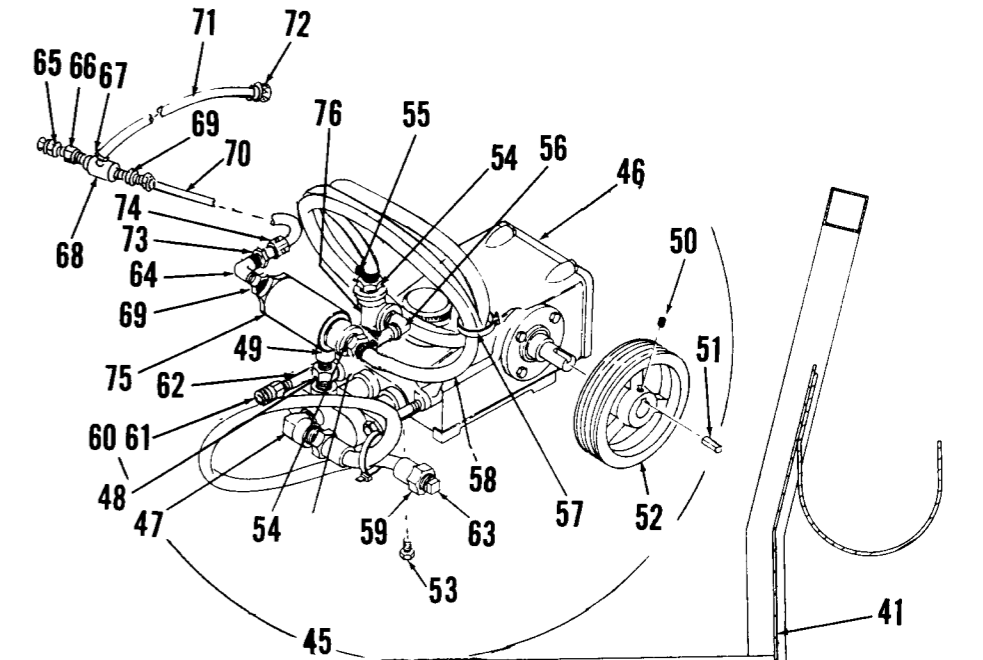
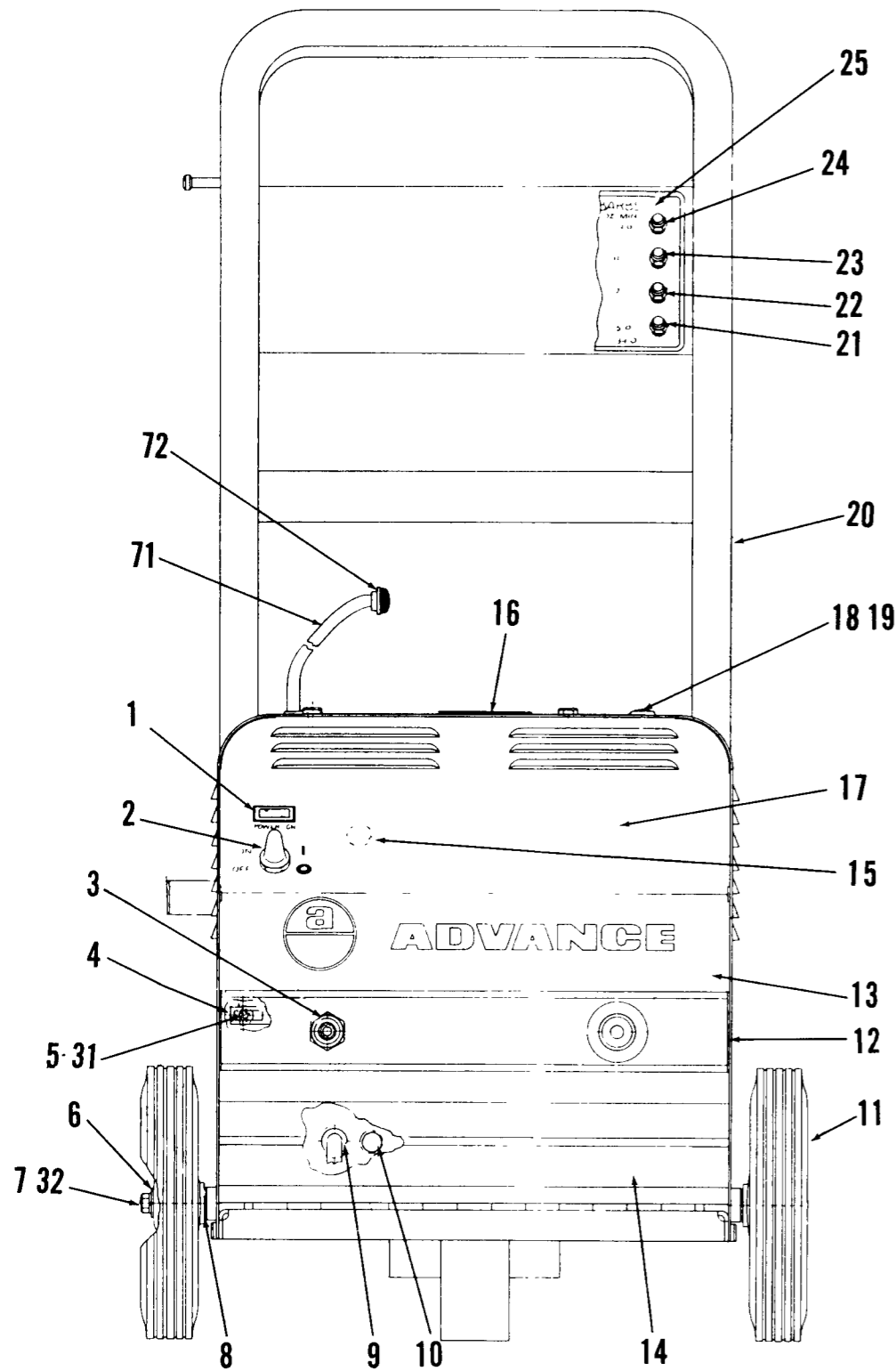
INDEX FOR FORM NUMBER 042082

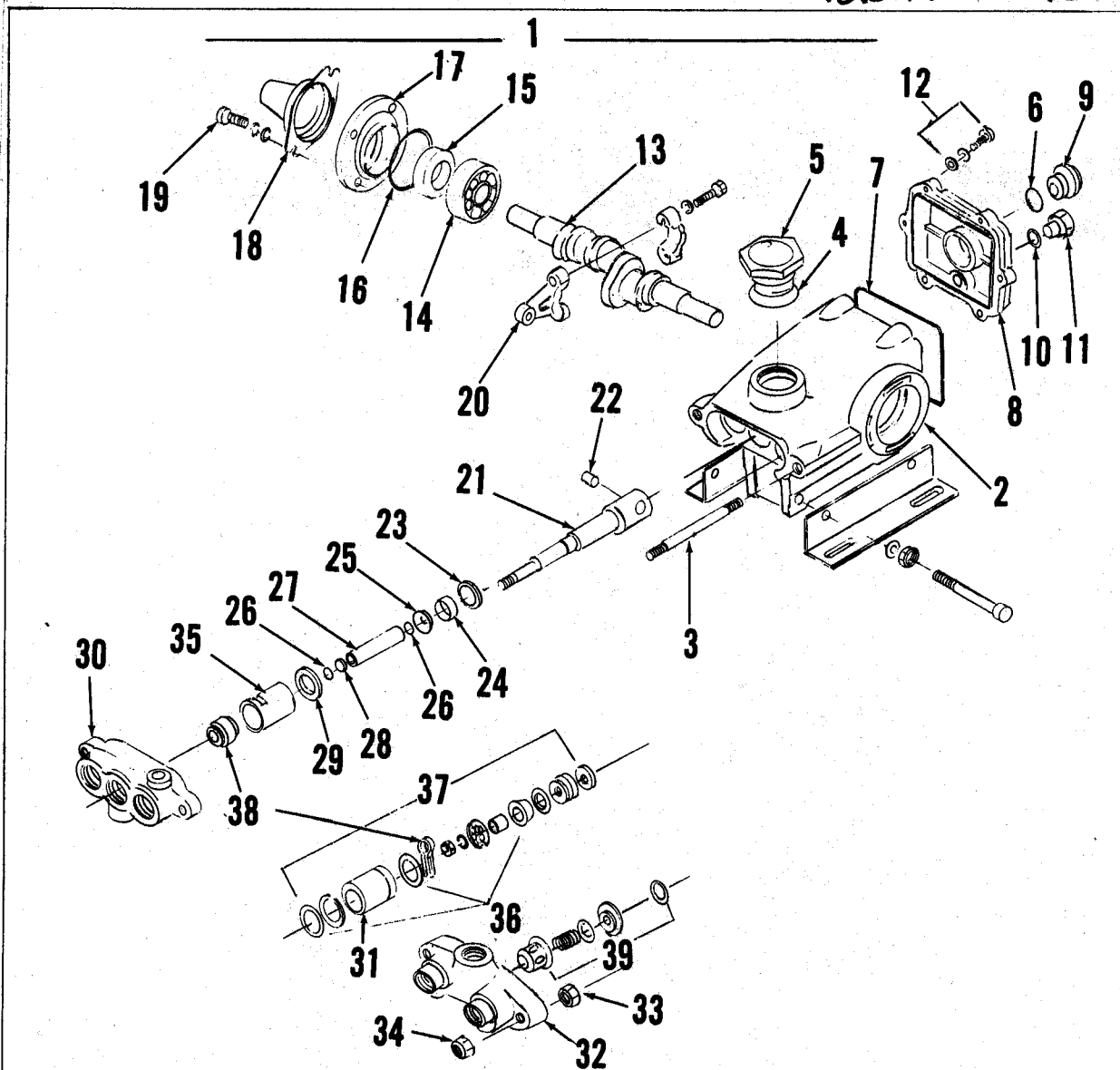
<u>Description</u>	<u>Location</u>	<u>Page</u>
Outer Body	C13	1
Pump & Motor Assembly	C14	2
Pump (internal parts)	D1	3

PARTS LIST

ITEM	PART NO.	QTY	DESCRIPTION	ITEM	PART NO.	QTY	DESCRIPTION
1	249 527	1	INDICATOR LIGHT	45	755 144	1	PUMP, SUB ASSEMBLY
2	756 514	1	BOOT, TOGGLE SWITCH	46	755 148	1	PUMP, 1200 PSI 3.5 GPM
3	740 126	1	SOCKET, DISCONNECT	47	745 540	1	ELBOW, ST. 3/8 x 90 BR.
4	469 832	1	TIE, ANCHOR MOUNT 1/4	48	751 687	1	BUSHING, 1/2 x 3/8 BR.
5		2	NUT, HEX #10-24	49	755 150	1	NIPPLE, HEX 3/8 BR.
6		2	WASHER, CUT 5/16	50		2	SCREW, SET FL. PT. #10-24 x .50
7		2	SCREW, HEX HD. 5/16-18 x .50	51	755 554	1	KEY, SQUARE
8		2	WASHER, SPRING 5/16	52	755 140	1	SHEAVE, POLY-V
9	755 174	1	STRAIN RELIEF 3/8 x 1/8	53	740 136	1	PLUG, PIPE 1/4 BR.
10	755 178	1	PLUG BUTTON	54	118 117	2	BARB, 1/2 x 1/2 BR.
11	756 025	2	WHEEL, 8 00 x 1.75	55	219 932	2	CLAMP, HOSE SAE #6
12	755 130	1	SHROUD ASSEMBLY, C/O	56	742 125	1	ELBOW, ST. 1/2 x 90 BR.
13	755 120	1	SHROUD WELDMENT	57	477 613	2	CABLE TIE
14	030 270	1	DECAL, ADVANCE	58	755 606	1	HOSE, .50 x .84 x 48"
15	030 264	1	DECAL, STRIPE FRONT	59	755 014	1	HOSE, PULSE 3/8 NPT
16	030 268	1	DECAL, STRIPE R.H.	60	740 152	1	ADAPTER, GHT SWV x 1/2
17	030 266	1	DECAL, STRIPE L.H.	61	752 352	1	FILTER, INLET
18	014 119	1	DECAL, GROUND SYMBOL	62	755 152	1	NIPPLE, 1/2 x 5" BR.
19	755 128	1	MAT, SHROUD	63	744 580	1	PLUG, PIPE 3/8
20	030 274	1	DECAL, WIRING 115V	64	369 632	1	ELBOW, ST 1/4 x 90 BR.
21	481 830	2	SCREW, OVAL HD. 1/4-20 x .62	65	745 543	1	ADAPTER, BLKHD. 1/4
22	755 102	1	WASHER, FINISHING 1/4	66	759 072	1	ADAPTER, 3/8 x 1/4 BR.
23	755 164	1	FRAME WELDMENT	67	756 364	1	CLAMP, HOSE SAE #4
24	755 162	1	BARB, .25 D (.0200)	68	755 512	1	INJECTOR, LIQUID
25	755 162	1	BARB, .25 C (.0240)	69	750 363	2	BUSHING, 3/8 x 1/4 BR/
26	755 160	1	BARB, 25 B (.0330)	70	755 154	1	HOSE ASSEMBLY, 3/8 x 22"
27	755 158	1	BARB, 25 A (.0430)	71	742 994	1	TUBE, PVC .25 x 60"
28	030 272	1	DECAL, BARB	72	750 857	1	STRAINER
29	200 340	2	WASHER, SHAKEPROOF #10	73	743 012	1	BARB, 3/8 x 1/4 S.S.
30	478 246	1	SWITCH, TOGGLE DPST	74	741 321	1	CLAMP, HOSE
31		4	CABLE TIE	75	755 509	1	VALVE, UNLOADER TSB 483 G-9
32		4	SCREW, PAN HD. #10-24 x .50	76	749 319	1	TEE, ST. 1/2 BR.
33		4	WASHER, LOCK #10	77	755 400	1	MOTOR, 1-1/2 H.P. 60 CY.
34		5	WASHER, FLAT #10	78	755 156	1	TRIM, 55.00
35		16	WASHER, LOCK 5/16	79	755 176	1	CORD SET ASSEMBLY, 12/3 x 12"
36		10	NUT, HEX 5/16-18	80	755 168	1	CORD ASSEMBLY, 14/3 x 34"
37		2	SCREW, SET FL. PT. 1/4-20 x .50	81	755 166	2	WIRE ASSEMBLY, #14 x 3"
38	755 138	1	SHEAVE, POLY-V	82	761 657	1	WAND ASSEMBLY 18" C/O TSB 605-G8
39	755 132	1	MOUNT, MOTOR	83	761 654	1	WAND WELDMENT
40	755 142	1	BELT, POLY-V	84	761 706	1	SPRAY GUN TSB 453, G-10
41	755 134	4	STUD, 5/16-18 x 1.12	85	030 216	1	DECAL, SPRAY GUN
42	755 558	1	MAT, STEP	86	761 698	1	STOP, HANDLE
43	015 324	1	NAMEPLATE, ADVANCE	87	761 647	1	HANDLE, MACHINED
44	015 325	1	OVERLAY, NAMEPLATE	88	761 645	1	QUICK DISCONNECT
45	030 276	1	DECAL, WARNING	89	761 606	1	PISTON
46		2	SCREW, HEX HD. 5/16-18 x 2"	90	761 323	2	RING, BACK-UP
47		10	WASHER, FLAT 5/16	91	761 325	2	O-RING
48	163 007	1	GROMMET, .500	92		4	SCREW, SET 1/4-20 x .38
49			Not Shown.	93	747 015	1	NOZZLE, 1507 BLUE HIGH PRESSURE
				94	761 680	1	NOZZLE, 4030 YELLOW LOW PRESSURE

REPAIR KIT FOR SPRAY GUN			OPTIONAL ITEMS		
755 410	1	REPAIR KIT C/O	744 658	1	HOSE, HIGH PRESSURE 25'
755 412	1	BALL W/PISTON COMPLETE	761 370	1	HOSE, WIRE BRAIDED 40'
755 414	1	SPRING, S.S.	753 070	1	HOSE, HIGH PRESSURE 40'
755 416	1	WASHER	761 422	1	HOSE, WIRE BRAIDED 60'
755 418	2	O-RING	752 556	1	HOSE, HIGH PRESSURE 60'
755 420	1	LOCK RING	755 568	1	REGULATOR, INLET 1/2"
755 422	1	WASHER, S.S.	755 052	1	BACKFLOW PREVENTER
			755 510	1	FILTER, 100 MESH, 1/2 NPT
			501 030	12	OIL, #40 SAE 20 1/2 BOTTLES





ITEM	PART NO	QTY	DESCRIPTION	ITEM	PART NO	QTY	DESCRIPTION
1	755 148	1	PUMP ASSEMBLY	33	755 930	2	NUT, HEX M8
2	755 981	1	CRANKCASE	34	755 966	2	NUT, FLANGE HEX M8
3	755 982	2	STUD, M8 x 82	35	755 993	3	RETAINER, SEAL
4	755 956	1	O-RING, OIL FILLER CAP				REPAIR KITS (INCLUDE INSTRUCTIONS)
5	755 957	1	OIL FILLER CAP	36	755 979	1	CUP KIT, C/O
6	755 929	1	O-RING, OIL GAUGE			3	CUP
7	755 934	1	O-RING, CRANKCASE COVER			6	O-RING, CYLINDER
8	755 983	1	COVER, CRANKCASE			3	BACK-UP RING, CYLINDER
9	755 984	1	OIL GAUGE			3	BAC-CUP PISTON
10	755 962	1	O-RING, DRAIN PLUG			3	BAC-CUP RING
11	755 985	1	DRAIN PLUG	37	755 980	1	PISTON KIT, C/O
12	755 986	6	SCREW, M6 x 20			6	O-RING, CYLINDER
13	755 987	1	CRANKSHAFT			3	BACK-UP RING, CYLINDER
14	755 950	2	BEARING			3	BAC-CUP PISTON
15	755 954	2	SEAL, OIL			3	BAC-CUP RING
16	755 948	2	O-RING, OIL SEAL CASE			3	CUP
17	755 955	2	CASE, OIL SEAL			3	PISTON SPACER
18	755 998	2	PROTECTOR, SHAFT			3	PISTON RETAINER
19	755 988	8	SCREW, M6 x 16			3	CONICAL WASHER (M6)
20	755 989	3	CONNECTING ROD			3	NUT (M6)
21	755 990	3	PISTON ROD			3	COTTERPIN
22	755 942	3	PIN, PISTON			3	INLET VALVES
23	755 940	3	WASHER, SEAL	38	755 905	1	PRRRM-A-LUBE KIT, C/O
24	755 991	3	OIL SEAL			3	PRRRM-A-LUBE SEALS
25	755 992	3	BARRIER SLINGER			3	COTTERPIN
26	755 953	3	O-RING, SLEEVE (VITON)	39	755 904	1	DISCHARGE VALVE KIT, C/O
27	755 964	3	RING, BACK-UP			3	VALVE, SPRING RETAINER
28	755 965	3	SLEEVE			3	VALVE SPRING
29	755 938	3	WASHER, SEAL			3	VALVE
30	755 994	1	MANIFOLD, INLET			3	O-RING, CYLINDER
31	755 996	3	CYLINDER				
32	755 997	1	MANIFOLD, DISCHARGE				

PUMP ASSEMBLY #755 148