



Electronic Service Manuals

This electronic document is provided as a service to our customers. We do not create the contents of the information contained in this document. Should you have detailed questions pertaining to the information contained in this document, you may contact Michco, or the manufacturer which provided the original information in this electronic deliverable. Michco's only part in this electronic deliverable was the electronic assembly process.

You may contact Michco through the following methods:
Phone (517) 484-9312 or (800) 331-3339 MI, OH, IN only
2011 N. High St. -- Lansing, Michigan -- 48906
Fax: (517) 484-9836
Email: CustServ@Michco.com
Web site: www.Michco.Com
Parts Web site: www.FloorMachineParts.Com

Order Parts on Line at:
www.FloorMachineParts.Com

Directly to Parts & Service:
By Email: **Shop@Michco.com**
By Fax: (517) 702-2041
By Voice: Use numbers above.

Serving the Cleaning Industry Since 1922

Notice: All copyrighted material remains property of original owners, all trademarks are property of respective owners. Manuals are subject to Manufacturer's reproduction limitations. Originals or reproductions were provided by manufacturers through a request. We make no warranty as to the correctness of information provided in this document and you assume all risk.

PARTS LIST

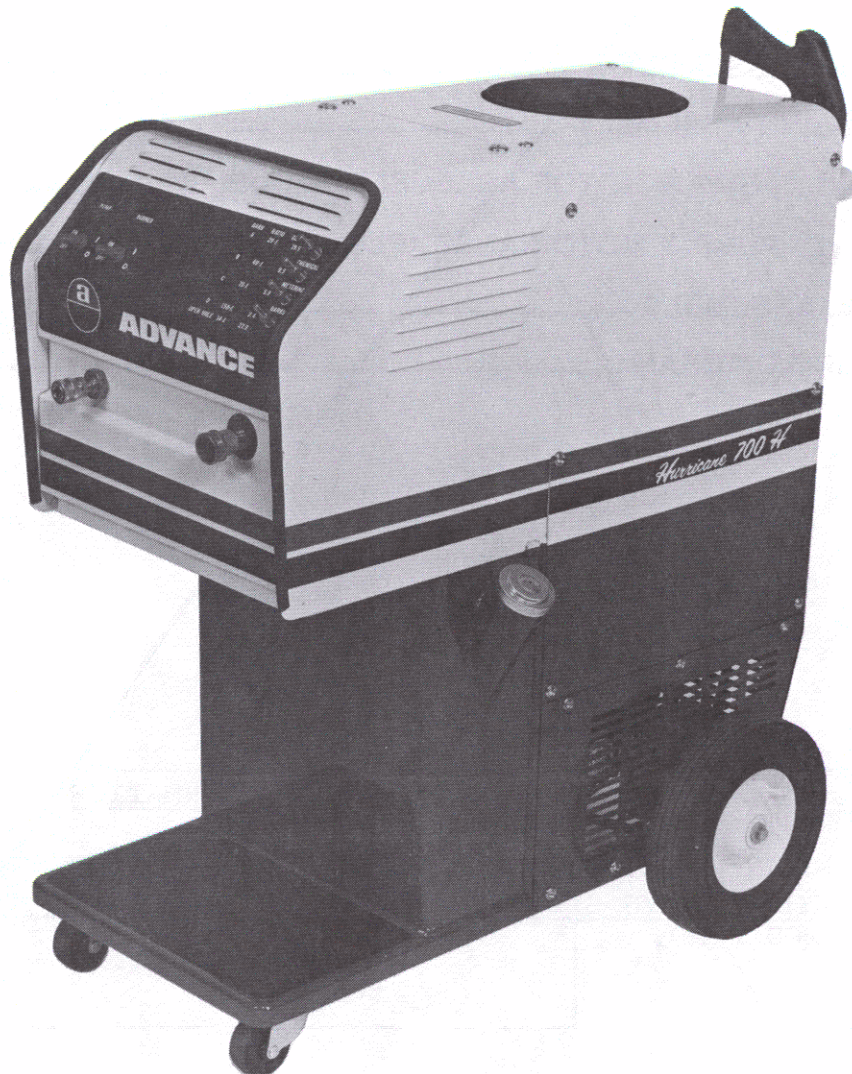
HURRICANE

MODEL 600-HO

MODEL 700-HO

FORM NO. 042-091

APRIL, 1983



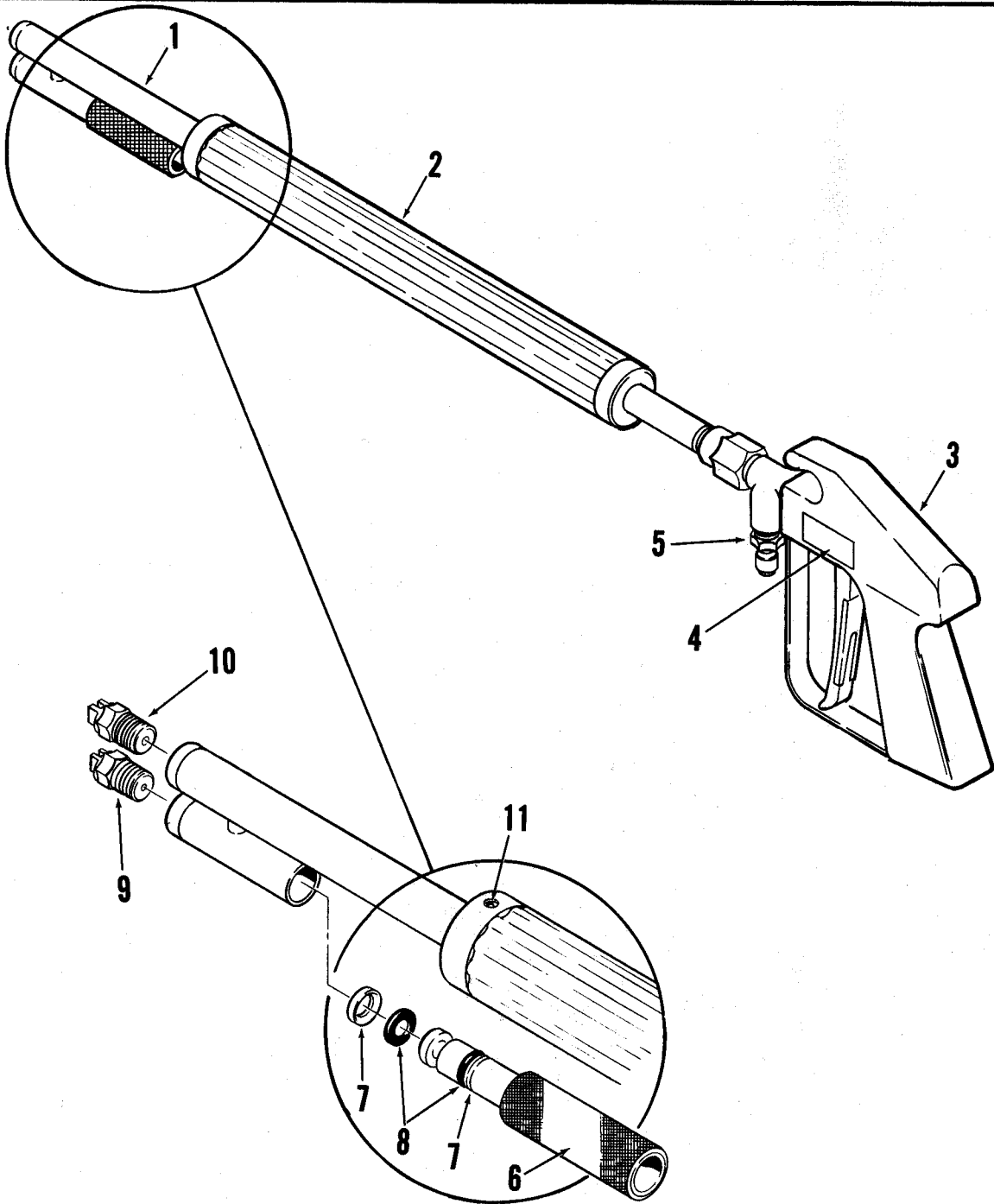
ADVANCE
MACHINE COMPANY

INTERNATIONAL HEADQUARTERS, Spring Park, Minnesota 55384 USA
EUROPE, 4 Rue Jean Engling, L - 1466 Luxembourg
CANADA, 1295 Crestlawn Drive, Mississauga, Ontario L4W 1A9



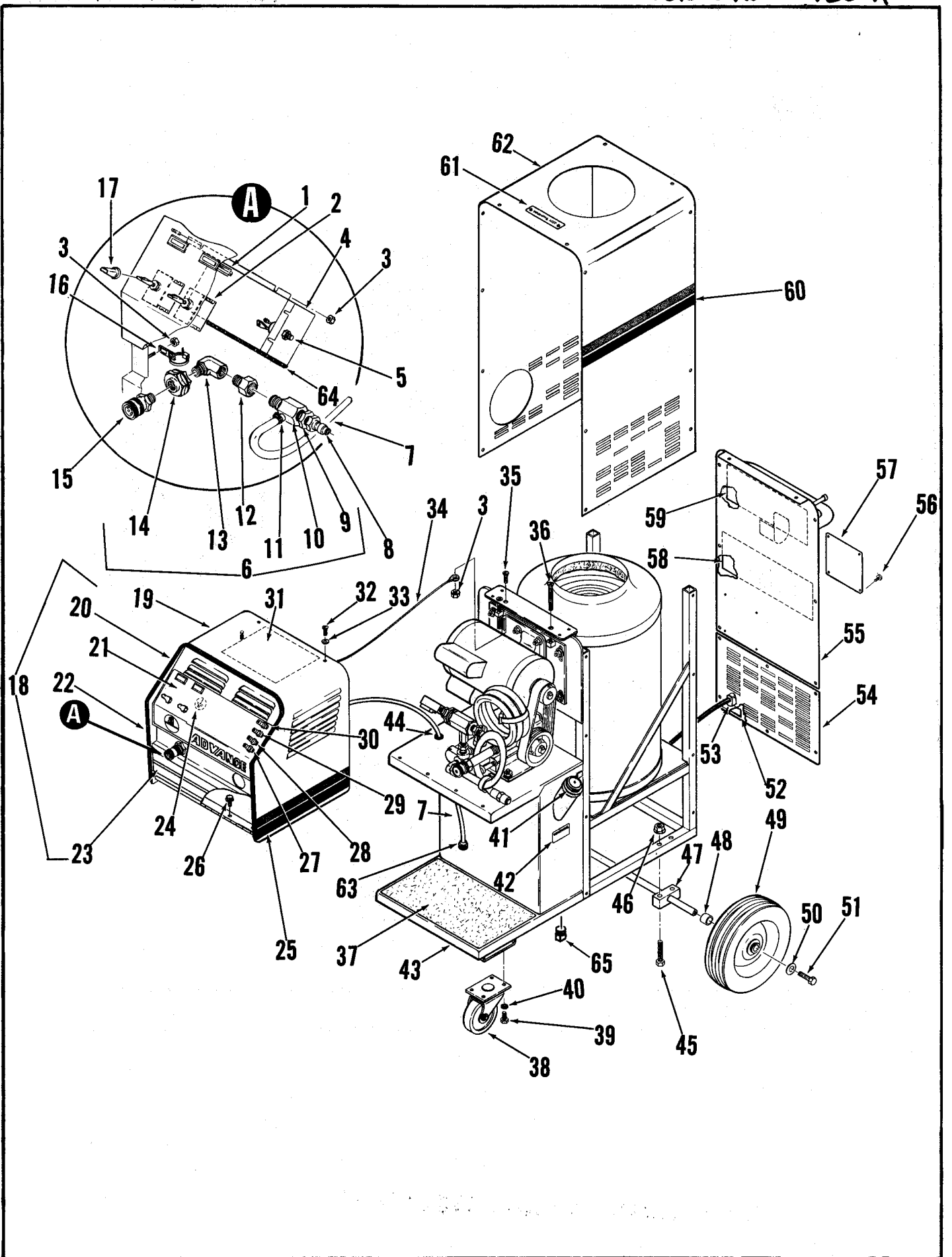
INDEX FOR FORM NUMBER 042091

<u>Description</u>	<u>Location</u>	<u>Page</u>
Burner & Coil	F9	8
Outer Body	F3	2
Pump & Motor - 600HO	F6	5
Pump & Motor - 700HO	F8	7
Pump - 600HO	F5	4
Pump - 700HO	F7	6
Wand	F2	1
Wiring Diagram	F11	10



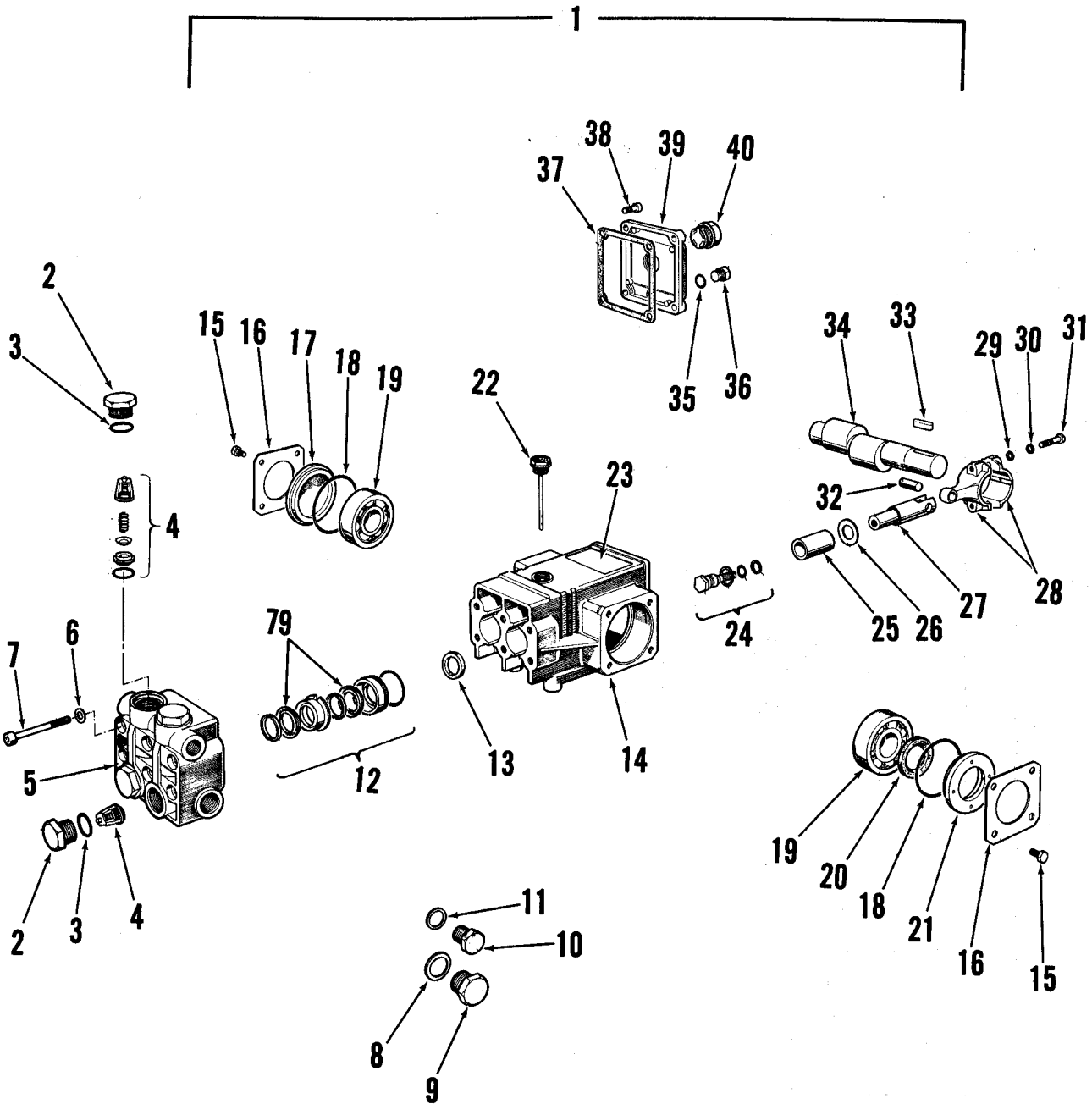
ITEM	PART NO	QTY	DESCRIPTION
1	761 654	1	18" WAND
2	761 645	1	HANDLE
3	761 706	1	SPRAY GUN 1200 P.S.I.
4	030 228	1	DECAL, SPRAY WAND
5	761 645	1	QUICK DISCONNECT
6	761 606	1	PISTON
7	761 323	2	RING, BACK UP
8	761 325	2	O-RING
9	761 680	1	NOZZLE 4030 YELLOW 600-HO & 700-HO
10	747 062	1	NOZZLE 1506 BLACK 600-HO
-	747 015	1	NOZZLE 1507 BLACK 700-HO
11	-	4	SET SCREW 1/4 - 20 X 3/8

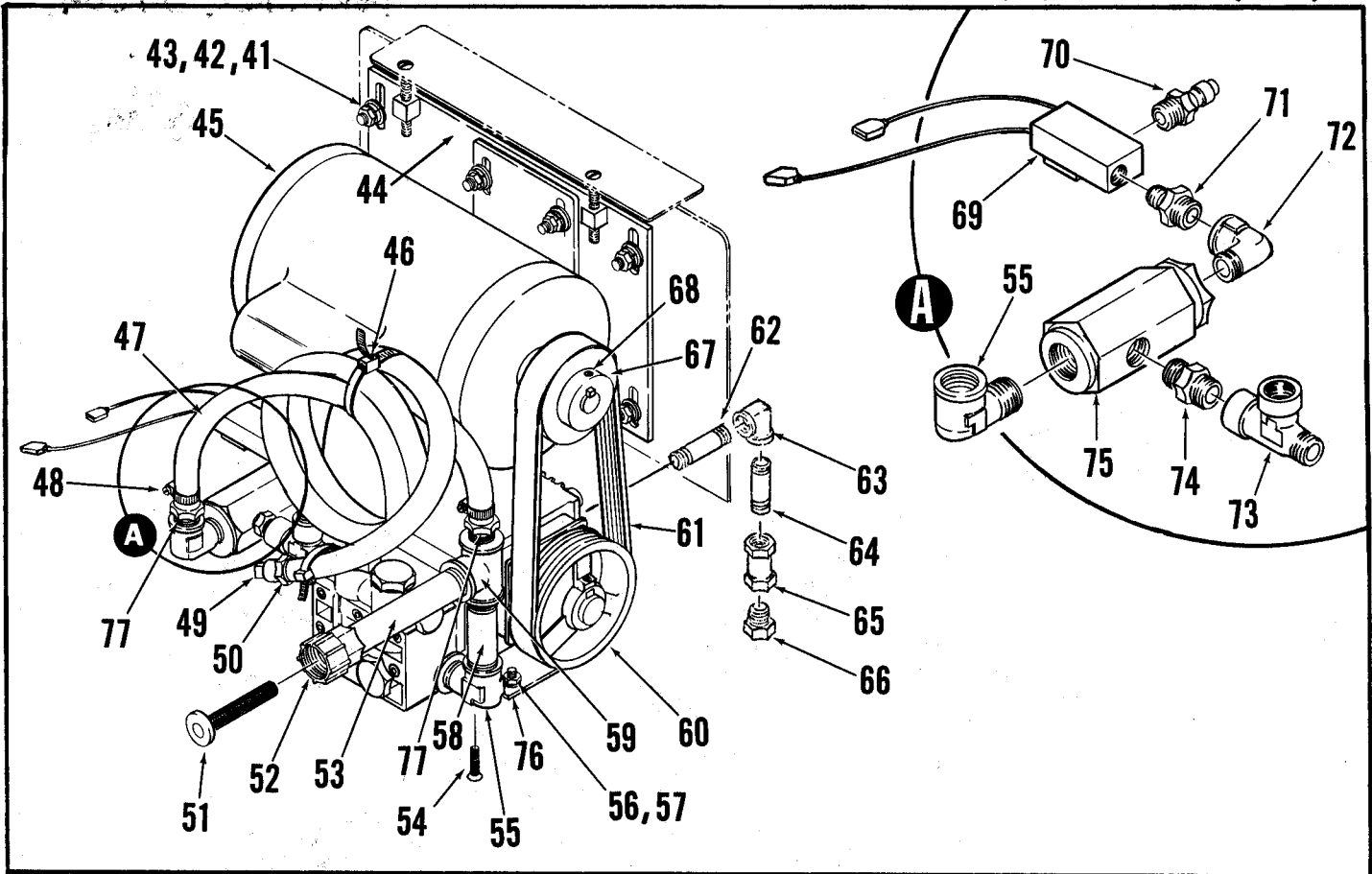
Replacement Wand Assembly TSB 605-68



HOUSING ASSEMBLY

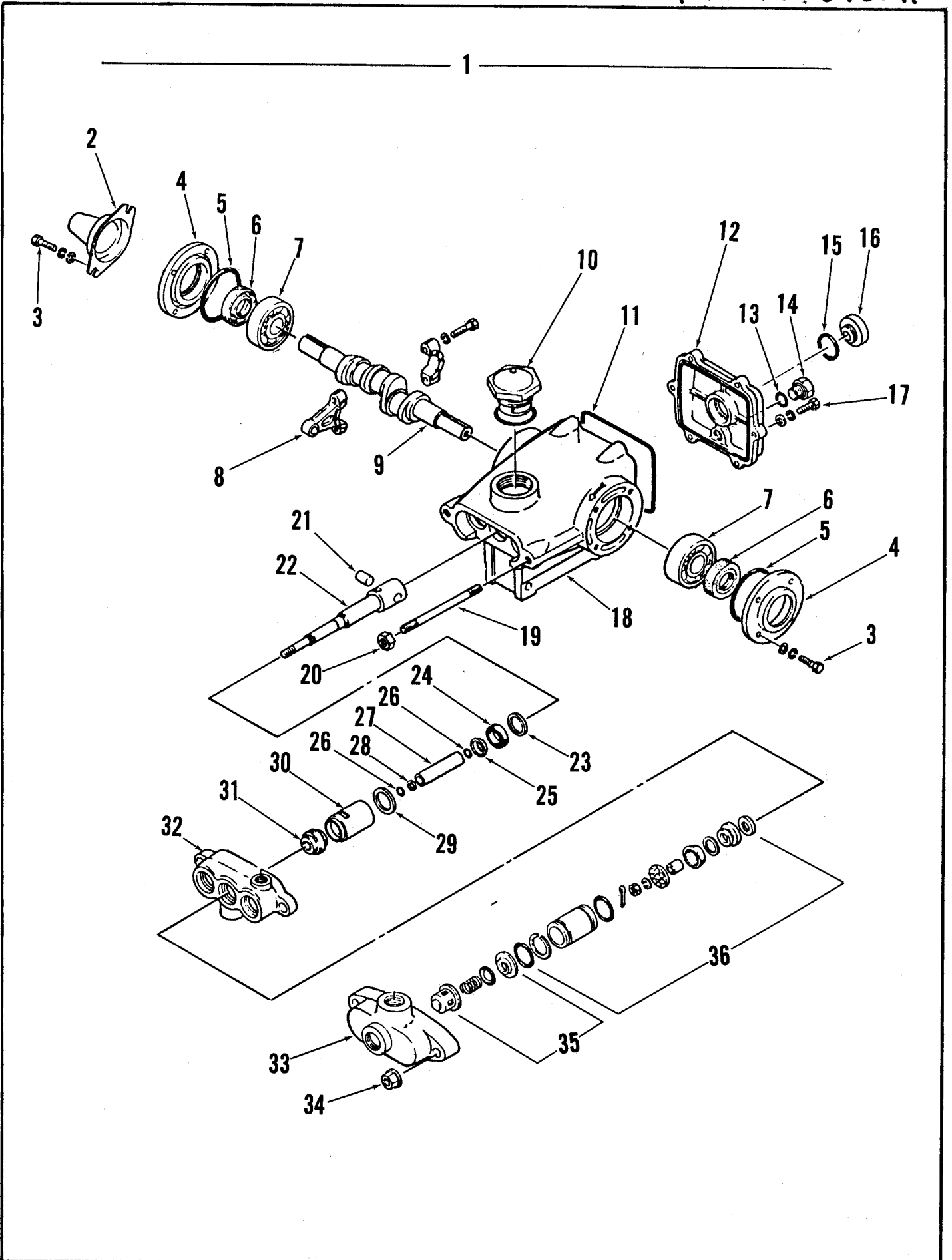
ITEM	PART NO	QTY	DESCRIPTION
1	249 527	2	LIGHT, INDICATOR " 600-H "
1	755 578	2	LIGHT, INDICATOR " 700-H "
2	200 340	2	SWITCH, TOGGLE
3		6	NUT, FLANGE WHIZ #10-24
4	755 692	1	COVER
5	755 338	1	TRIAC
6	755 640	1	INJECTOR ASSEMBLY C/O
7	742 994	1	TUBE PVC .25 X 60"
8	761 645	1	PLUG Q.D. 1/4 M S.S.
9	750 363	1	BUSHING 3/8 X 1/4 BRASS
10	755 512	1	INJECTOR, LIQUID
11	756 364	1	CLAMP, HOSE SAE #4
12	759 072	1	ADAPTOR 3/8 X 1/4 BRASS
13	369 632	1	ELBOW ST. 1/4 X 90 BRASS
14	745 543	1	ADAPTOR, BLK. HD. 1/4
15	756 436	1	SOCKET, QUICK DISCONNECT
16	478 246	2	TIE, CABLE
17	756 514	2	BOOT, TOGGLE SWITCH
18	755 645	1	SHROUD ASSEMBLY "600-H" C/O
18	755 641	1	SHROUD ASSEMBLY "700 H" C/O
19	755 646	1	SHROUD
20	755 156	1	TRIM 50.00
21	030 310	1	DECAL, ADVANCE "600H"
21	030 326	1	DECAL, ADVANCE "700H"
22	030 330	1	DECAL, STRIPE R.H.
23	030 264	1	DECAL, STRIPE FRONT
24	014 119	1	DECAL, GROUND SYMBOL
25	030 328	1	DECAL, STRIPE L.H.
26		4	SCREW, HEX WASHER HD. HP-5 #10-24 X 1/2 W/LW
27	755 242	1	BARB, .25 H (.0150) "600-H"
27	755 158	1	BARB, .25 A (.0430) "700-H"
28	755 244	1	BARB, .25 G (.0240) "600-H"
28	755 160	1	BARB, .25 B (.0330) "700-H"
29	755 246	1	BARB, .25 F (.0290) "600-H"
29	755 162	1	BARB, .25 C (.0240) "700-H"
30	755 248	1	BARB, .25 E (.0400) "600-H"
30	755 164	1	BARB, .25 D (.0200) "700-H"
31	030 336	1	DECAL, WIRING
32		34	SCREW, OVAL HD. HP-5 #10-32 X 1/2
33	449 340	34	WASHER, FINISHING #10
34	755 689	1	WIRE ROPE ASSEMBLY
35		1	SCREW, FLAT HD. #10-24 X 5/8
36		2	SCREW, FLAT HD. #5/16 - 18 X 2 3/4
37	755 633	1	MAT, BOTTOM
38	340 081	2	CASTER, SWIVEL 4.0 X 1.0
39		8	SCREW, HEX HD. 1/4-20 X 1/2
40		8	WASHER, LOCK 1/2
41	478 502	1	CAP, FUEL TANK
42	030 172	1	DECAL WARNING
43	755 614	1	FRAME
44	467 171	1	GROMMET .625
45		4	SCREW, HEX HD. 5/16 - 18 X 2.5
46		4	NUT, WHIZ FLANG 5/16 - 18
47	755 687	1	AXEL
48	755 658	2	SPACER, WHEEL
49	752 045	2	WHEEL 10" X 2.75
50		2	WASHER, FLAT 5/16
51		2	SCREW, HEX HD. 5/16 - 18 x 5/8
52	328 818	1	RELIEF, STRAIN
53	030 090	1	DECAL, ELECTRICAL WARNING
54	755 631	1	COVER, LOWER BACK
55	755 654	1	PANEL, BACK
56		4	SCREW, PHILLIPS PAN HD. #6 - 32 X 5/8
57	030 324	1	NAMEPLATE "600-H"
57	030 338	1	NAMEPLATE "700-H"
58	030 320	1	DECAL, INSTRUCTION
59	030 276	1	DECAL, WARNING
60	030 317	1	DECAL, "HURRICANE 600-H"
60	030 334	1	DECAL, "HURRICANE 700-H"
61	030 072	1	DECAL, "HOT STACK"
62	755 643	1	COVER, TOP
63	750 857	1	STRAINER
64	755 621	1	TRIM
65	766 277	1	PLUG, PIPE 1/4 BLK.

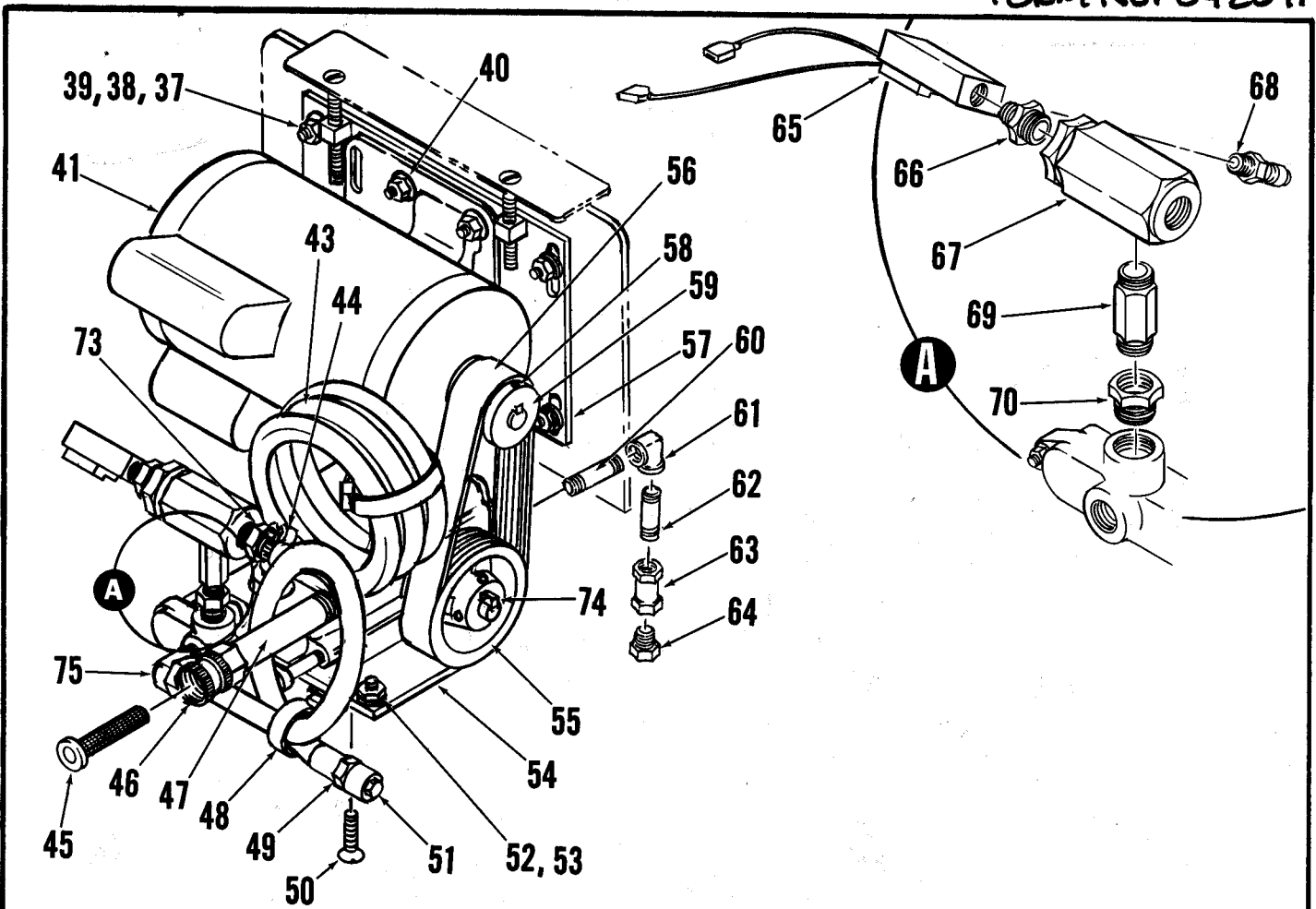




ITEM	PART NO	QTY	DESCRIPTION	ITEM	PART NO	QTY	DESCRIPTION
1	755 256	1	PUMP ASSEMBLY	47	755 606	1	HOSE .50 X .84 X 48.00
2	759 900	4	PLUG	48	219 932	2	CLAMP, HOSE SAE #6
3	759 901	4	O-RING	49	744 580	1	PLUG, PIPE 3/8 BRASS
4	759 902	1	VALVE UNIT ASSEMBLY (4 REQ'D.)	50	755 014	1	HOSE, PULSE 3/8 NPT
5	759 903	1	HEAD, PUMP	51	752 352	1	FILTER, INLET
6	759 904	6	WASHER	52	740 152	1	ADAPTOR GHT SWX 1/2
7	759 905	6	SCREW, SOC. HD. CAP	53	755 152	1	NIPPLE 1/2 X 5.00 BR.
8	759 906	1	WASHER	54	755 264	4	SCREW M8 X 16
9	759 907	1	PLUG	55	742 125	2	ELBOW ST. 1/2 X 90 BR.
10	759 908	1	PLUG	56		4	WASHER, LOCK 1/4
11	759 909	1	WASHER	57		4	NUT, HEX 1/4 - 20
12	759 910	1	CYLINDER CUP ASSEMBLY (2 REQ'd.)	58	755 258	1	NIPPLE 1/2 - 3.00 BR.
13	759 911	1	OIL SEAL (2 REQ'd.)	59	749 244	1	TEE 1/2 BR.
14	759 912	1	CRANKCASE	60	755 260	1	SHEAVE, POLY-V 10J 3.97
15	759 913	8	SCREW	61	755 263	1	BELT, POLY-V 10J 2.88
16	759 914	2	COVER, CRANKCASE	62	369 624	1	NIPPLE 1/4 X 2.00 BR.
17	759 915	1	SPACER	63	340 782	1	ELBOW 1/4 X 90 BR.
18	759 916	2	O-RING	64	750 688	1	NIPPLE 1/4 X 1.50 BR.
19	759 917	2	BEARING, BALL	65	220 526	1	COUPLING 1/4 BRASS
20	759 918	1	SEAL, OIL	66	740 136	1	PLUG, PIPE 1/4 BR.
21	759 919	1	SPACER	67	755 261	1	SHEAVE POLY-V 10J 2.88
22	759 921	1	DIP STICK, OIL	68		4	SCREW, SET FT. PT. 1/4-20 X 3/8
23	030 342	1	DECAL, ADVANCE	69	755 868	1	SWITCH, FLOW
24	759 938	1	PISTON SCREW ASSEMBLY (1 REQ'd)	70	761 645	1	QUICK DISCONNECT
25	759 922	2	PISTON	71	755 322	1	NIPPLE
26	759 923	2	WASHER	72	745 540	1	ELBOW ST. 3/8 X 90 BR.
27	759 924	2	GUIDE, PISTON	73	756 740	1	TEE, STREET 3/8 BR.
28	759 925	2	ROD, CONNECTING	74	752 730	1	NIPPLE 3/8 CLOSE BR.
29	759 926	4	WASHER, FLAT	75	755 509	1	VALVE, UNLOADER
30	759 927	4	WASHER, LOCK	76	755 661	1	PLATE, PUMP
31	759 928	4	SCREW	77	118 117	2	BARB
32	759 929	2	PIN, PISTON	78	755 168	1	CORD ASSEMBLY, MOTOR (NOT SHOWN)
33	759 930	1	KEY	79	759 940	1	CUP (4 REQ'D)
34	759 931	1	CRANK SHAFT				
35	759 932	1	O-RING				
36	759 933	1	PLUG				
37	759 934	1	GASKET, COVER				
38	759 935	4	SCREW				
39	759 936	1	COVER, CRANKCASE				
40	759 937	1	INDICATOR, OIL LEVEL				
41		8	WASHER, FLAT 5/16				
42		8	WASHER, LOCK 5/16				
43		8	NUT, HEX 5/16				
44	755 321	1	MOUNT, MOTOR				
45	755 250	1	MOTOR, 1 HP 60 HZ				
46	477 613	2	TIE, WIRE				

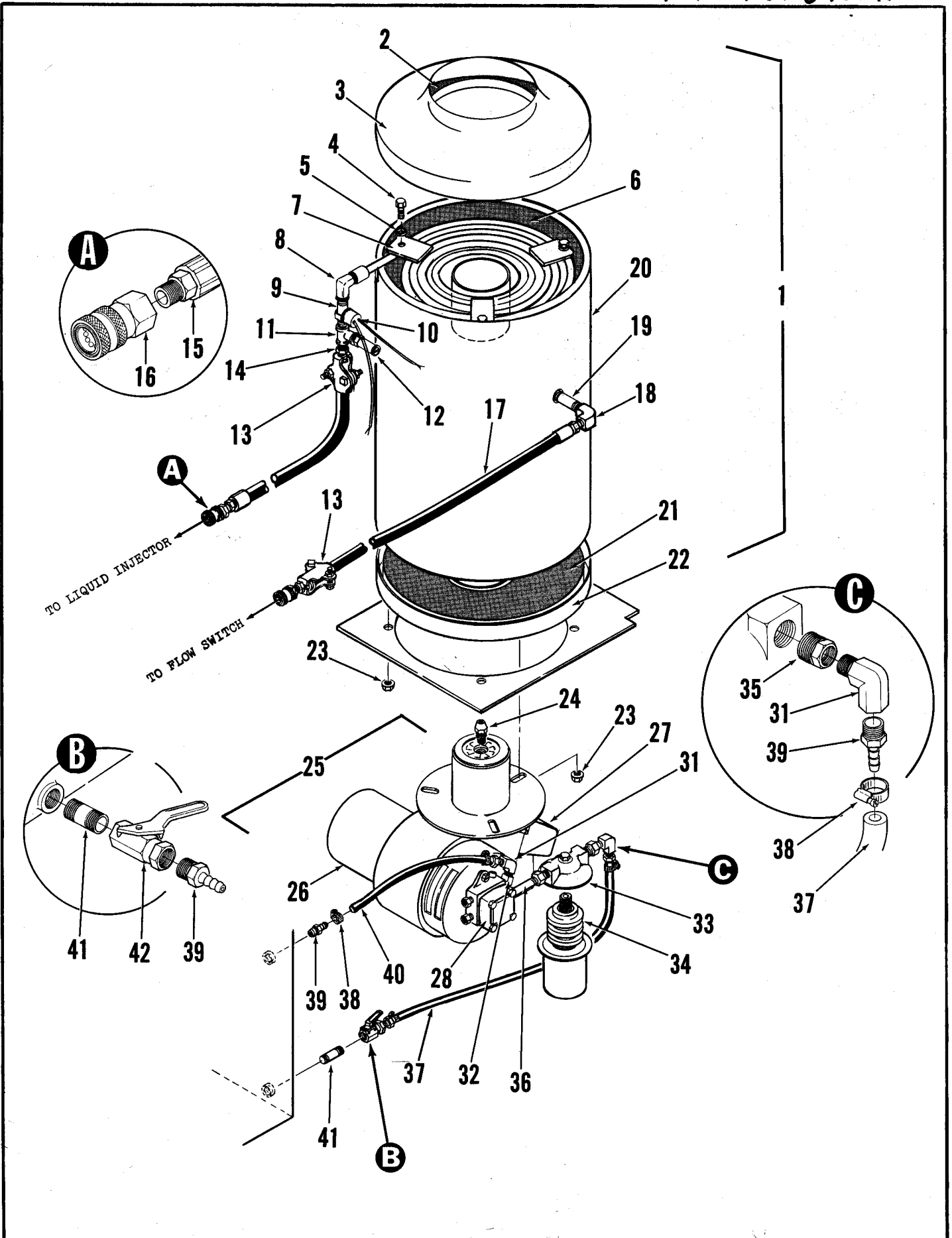
2 CYLINDER PUMP & MOTOR ASSEMBLY
MODEL 600-HO





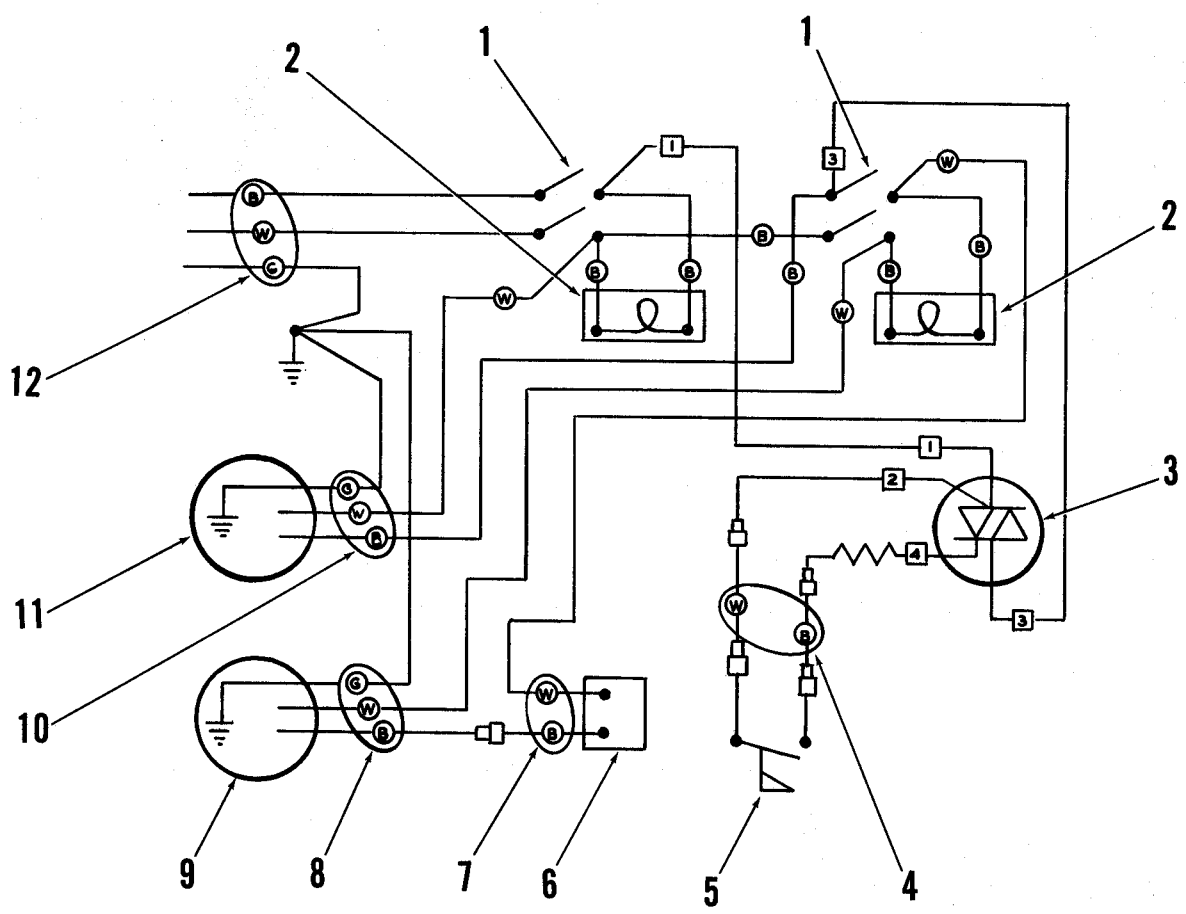
ITEM	PART NO	QTY	DESCRIPTION	ITEM	PART NO	QTY	DESCRIPTION
1	755 148	1	PUMP ASSEMBLY	42	755 168	1	CORD ASSEMBLY
2	755 998	1	PROTECTOR, SHAFT	43	755 606	1	HOSE .50 X .84 X 48.00
3	755 988	8	SCREW, M6 X 16 (WITH WASHERS)	44	219 932	2	CLAMP, HOSE SAE #6
4	755 955	2	CASE, OIL SEAL	45	752 352	1	FILTER, INLET
5	755 948	2	O-RING, OIL SEAL CASE	46	740 152	1	ADAPTOR, GHT SWV X 1/2
6	755 954	2	SEAL, OIL	47	755 152	1	NIPPLE 1/2 X 5" BR.
7	755 950	2	BEARING	48	477 613	2	CABLE TIE
8	755 989	3	ROD, CONNECTIVE (WITH SCREWS & WASHERS)	49	755 014	1	HOSE, PULSE
9	755 987	1	CRANKSHAFT	50	755 675	4	SCREW M6 X 25
10	755 957	1	CAP, OIL FILLER	51	744 580	1	PLUG, PIPE 3/8 BR.
11	755 934	1	O-RING, CRANKCASE COVER	52		4	WASHER, LOCK 1/4
12	755 983	1	COVER, CRANKCASE	53		4	NUT, HEX 1/4-20
13	755 962	1	O-RING, OIL GAUGE	54	755 694	1	PLATE, PUMP
14	755 985	1	PLUG, DRAIN	55	755 140	1	SHEAVE, POLY-V 10J 3.97 600-HO
15	755 929	1	O-RING, OIL GAUGE		755 140	1	SHEAVE, POLY-V 10J 3.97 700-HO
16	755 984	1	GAUGE, OIL	56	755 263	1	BELT, POLY-V 600-HO
17	755 986	6	SCREW, M6 X 20 (WITH WASHERS)		755 238	1	BELT, POLY-V 700-HO
18	755 981	1	CRANKCASE	57	755 321	1	MOUNT, MOTOR
19	755 982	2	STUD, M8 X 82	58		2	SCREW, SET 1/4-20 X 1/2
20	755 930	2	NUT, HEX M8	59	755 184	1	SHEAVE, POLY-V 10J 2.88 600-HO
21	755 942	3	PIN, PISTON		755 138	1	SHEAVE, POLY-V 10J 2.15 700-HO
22	755 990	3	ROD, PISTON	60	753 725	1	NIPPLE, 1/4 X 2.50 BR.
23	755 940	3	WASHER, SEAL	61	340 782	1	ELBOW 1/4 X 90 BR.
24	755 991	3	SEAL, OIL	62	750 688	1	NIPPLE, 1/4 X 1 1/2 BR.
25	755 992	3	SLINGER, BARRIER	63	220 526	1	COUPLING 1/4 BR.
26	755 953	6	O-RING, SLEEVE (VITON)	64	740 136	2	PLUG, PIPE 1/4 BR.
27	755 965	3	SLEEVE	65	755 868	1	SWITCH, FLOW
28	755 964	3	RING, BACK-UP	66	755 322	1	NIPPLE, RD. 3/8 X 1/4
29	755 938	3	WASHER, SEAL	67	755 509	1	VALVE, UNLOADER
30	755 993	3	SEAL, RETAINER	68	761 645	1	PLUG Q.D. 1/4 M - S.S.
31	755 905	3	PRRRM-A-LUBE SEAL KIT	69	755 565	1	NIPPLE, HEX 3/8 X 2" BR.
32	755 994	1	MANIFOLD, INLET	70	751 687	1	BUSHING 1/2 X 3/8 BR.
33	755 997	1	MANIFOLD, DISCHARGE	71	742 125	1	ELBOW, ST. 1/2 X 90 BR. (NOT SHOWN)
34	755 966	2	NUT, FLANGE HEX M8	72	749 319	1	TEE, STREET 1/2 BR.
35	755 904	3	DISCHARGE VALVE KIT - QUIET VALVE	73	118 117	2	BARB 1/2 X 1/2 BR.
36	755 980	3	HI-PRESSURE PISTON KIT	74	755 554	1	KEY .197 (5MM SQ.)
37		4	WASHER, FLAT 5/16	75	745 540	1	ELBOW ST. 3/8 X 90 BR.
38		4	WASHER, LOCK 5/16				
39		4	NUT, FLANGE HEX 5/16				
40		4	NUT, FLANGE HEX 5/16				
41	755 250	1	MOTOR, 1 HP 60 HZ (600-HO)				
42	755 400	1	MOTOR, 1 1/2 HP 60 HZ (700-HO)				

3 CYLINDER PUMP & MOTOR ASSEMBLY MODEL 600-HO & 700-HO



COIL ASSEMBLY

ITEM	PART NO	QTY	DESCRIPTION
1	755 662	1	COIL ASSEMBLY C/O
2	755 680	1	INSULATION, TOP
3	755 670	1	COLLECTOR
4		3	SCREW, HEX HD. 5/16 - 18 X 5/8
5		3	WASHER, LOCK 5/16
6	755 610	1	INSULATION, WRAP 678
7	755 664	1	COIL
8	369 632	1	ELBOW, ST. 1/4 90° BR.
9	753 725	1	NIPPLE, 1/4 X 2.50 BR.
10	755 663	1	THERMOSTAT
11	249 819	1	TEE 1/4 BR.
12	755 873	1	VALVE, POP OFF
13	741 321	2	CLAMP, HOSE
14	743 012	1	BARB, 3/8 X 1/4 S.S.
15	761 238	1	HOSE, 3/8 X 29"
16	756 434	2	SOCKET, DISCONNECT
17	760 390	1	HOSE ASSEMBLY 3/8 X 16"
18	340 782	1	ELBOW, 1/4 X 90 BRASS
19	755 669	1	NIPPLE, 1/4 X 3.00 S.S.
20	755 674	1	WRAP, COIL
21	755 688	1	INSULATION, BOTTOM
22	755 682	1	DISC, BOTTOM
23		7	NUT, WHIZ HEX 5/16 - 18
24	752 258	1	NOZZLE, BURNER 1.5 GPH (600-HO)
24	755 696	1	NOZZLE, BURNER 1.75 GPH (700 - HO)
25	752 114	1	BURNER, OIL 115/60 (600 - HO)
25	752 115	1	BURNER, OIL 230/60 (700 - HO)
26	752 147	1	MOTOR, BURNER 115/60 (600 - HO)
26	752 153	1	MOTOR, BURNER 230/60 (700 - HO)
27	752 142	1	TRANSFORMER 115/60 (600 - HO)
27	752 150	1	TRANSFORMER 230/60 (700 - HO)
28	752 145	1	PUMP, FUEL (600 - HO, & 700 - HO)
29	752 139	1	FAN, SQUIRREL CAGE (NOT SHOWN)
30	752 159	1	ELECTRODE (NOT SHOWN)
31	369 632	2	ELBOW, ST. 1/4 X 90° BR.
32	368 938	1	ELBOW, ST. 1/4 X 45° BR.
33	752 259	1	FILTER, FUEL
34	752 255	1	CARTRIDGE, FUEL FILTER
35	750 363	2	BUSHING, REDUCING
36	745 597	1	NIPPLE 1/4 X 3.00
37	752 346	1	TUBE, RUBBER .187 X 17.00
38	756 346	4	CLAMP, HOSE SAE #4
39	752 339	4	BARB 3/16 X 1/4 BR
40	755 728	1	TUBE, RUBBER .187 X 9.00
41	750 688	1	NIPPLE 1/4 X 1.50 BR.
42	745 649	1	VALVE, 2-WAY 1/4



ITEM	PART NO	QTY	DESCRIPTION
1	200 340	2	SWITCH, TOGGLE DPST HP6-1
2	249 527	2	LIGHT, INDICATOR 115V (600 - HO)
2	755 578	2	LIGHT, INDICATOR 23V (700 - HO)
3	755 336	1	TRIAL ASSEMBLY
4	755 332	1	CORD ASSEMBLY 14/2 X 22
5	755 868	1	SWITCH, FLOW
6	755 663	1	THERMOSTAT
7	755 671	1	CORD ASSEMBLY 14/2 X 39.00
8	755 683	1	CORD ASSEMBLY 14/3 X 46.00
9	752 114	1	BURNER, OIL (600-HO)
9	752 115	1	BURNER, OIL (700-HO)
10	755 168	1	CORD ASSEMBLY 14/3 X 34.00
11	755 250	1	MOTOR, 1 HP 60 HZ (600-HO)
11	755 400	1	MOTOR, 1 1/2 HP 60 CY (700-HO)
12	755 182	1	CORD SET ASSEMBLY (600-HO)
12	755 681	1	CORD SET ASSEMBLY (700-HO)

