



Electronic Service Manuals

This electronic document is provided as a service to our customers. We do not create the contents of the information contained in this document. Should you have detailed questions pertaining to the information contained in this document, you may contact Michco, or the manufacturer which provided the original information in this electronic deliverable. Michco's only part in this electronic deliverable was the electronic assembly process.

You may contact Michco through the following methods:
Phone (517) 484-9312 or (800) 331-3339 MI, OH, IN only
2011 N. High St. -- Lansing, Michigan -- 48906
Fax: (517) 484-9836
Email: CustServ@Michco.com
Web site: www.Michco.Com
Parts Web site: www.FloorMachineParts.Com

Order Parts on Line at:
www.FloorMachineParts.Com

Directly to Parts & Service:
By Email: **Shop@Michco.com**
By Fax: (517) 702-2041
By Voice: Use numbers above.

Serving the Cleaning Industry Since 1922

Notice: All copyrighted material remains property of original owners, all trademarks are property of respective owners. Manuals are subject to Manufacturer's reproduction limitations. Originals or reproductions were provided by manufacturers through a request. We make no warranty as to the correctness of information provided in this document and you assume all risk.



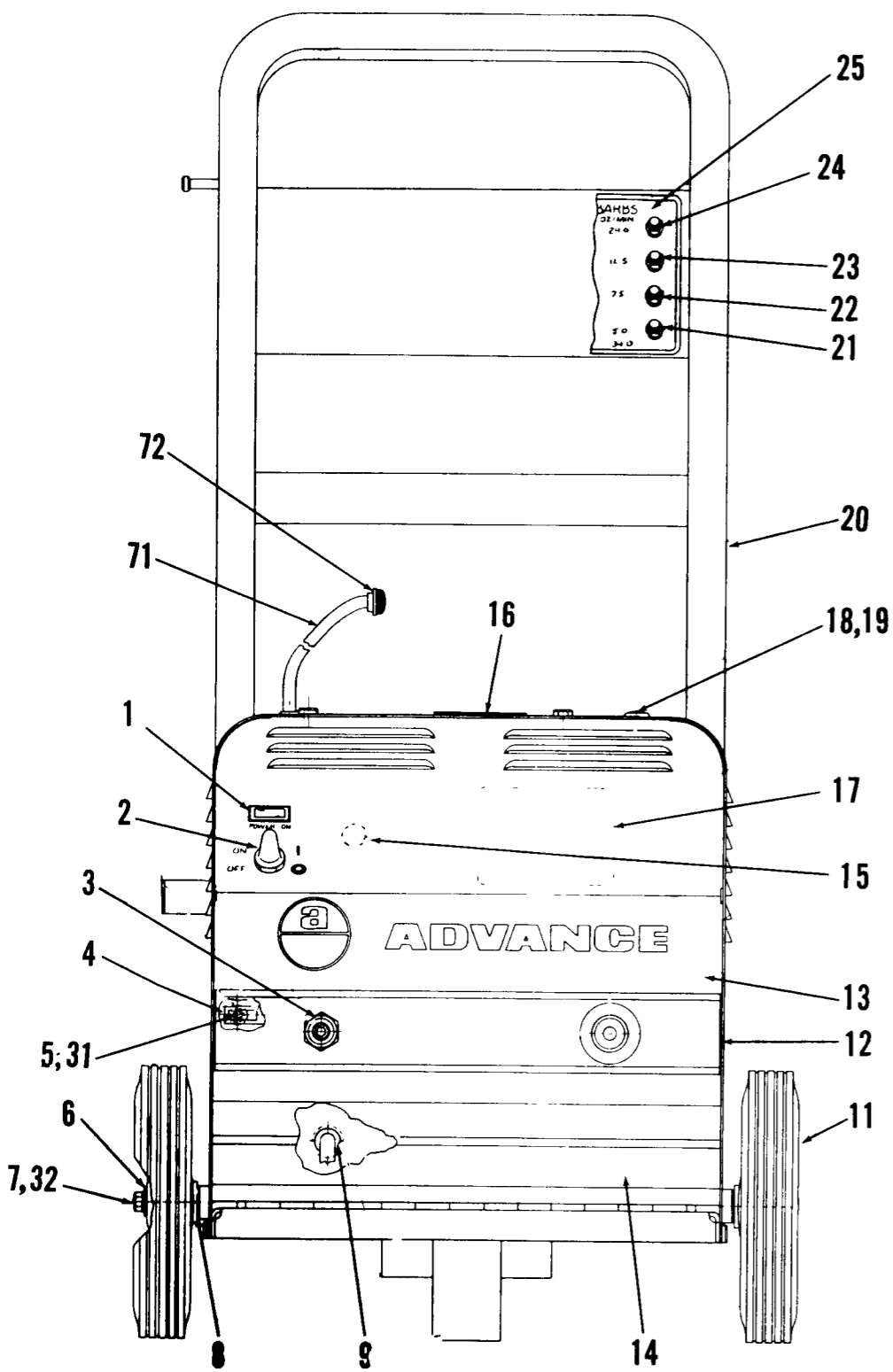
Hurricane 600E

FORM NO. 042083

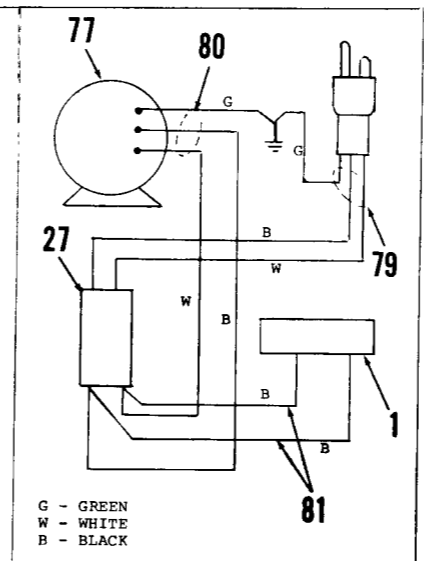
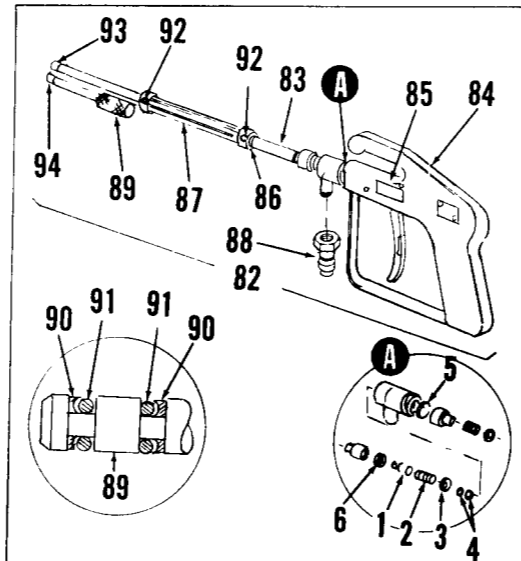
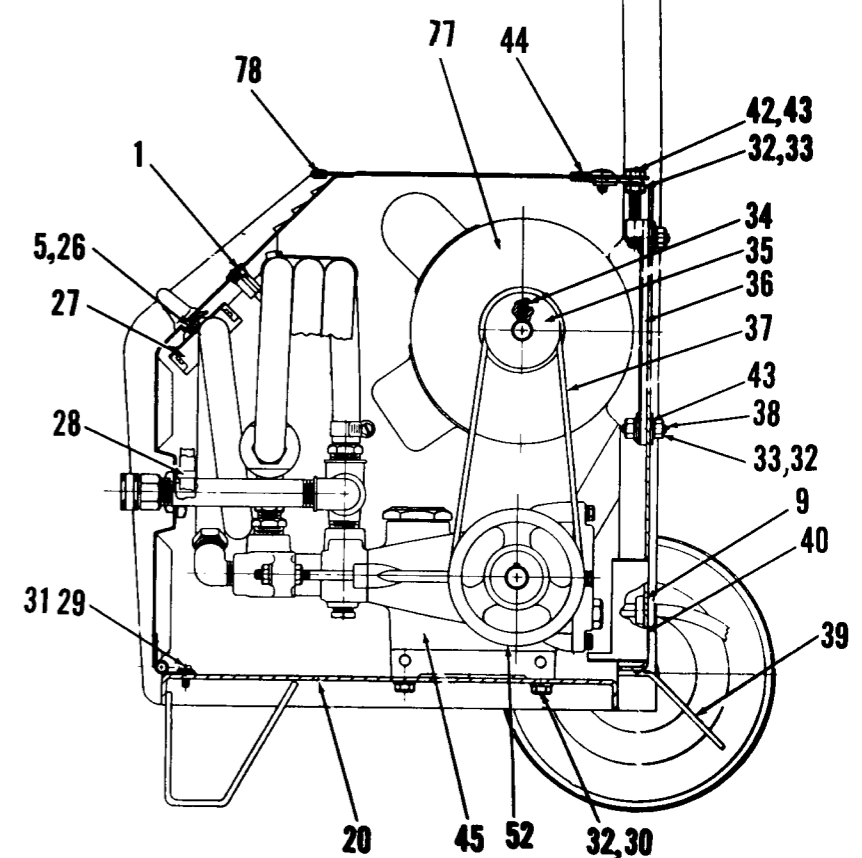
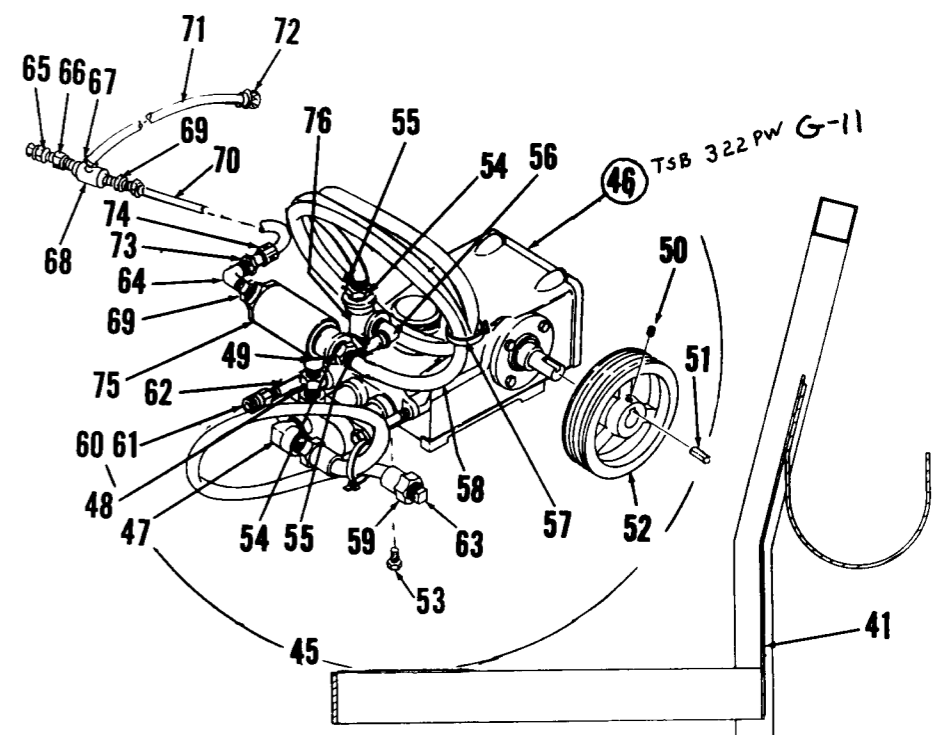
INDEX FOR FORM NUMBER 042083

<u>Description</u>	<u>Location</u>	<u>Page</u>
Outer Body	C7	1
Pump & Motor Assembly	C8	2
Pump (internal parts - 3 Cyl.)	C9	3
Pump (internal parts - 2 Cyl.)	C10	4

PARTS LIST



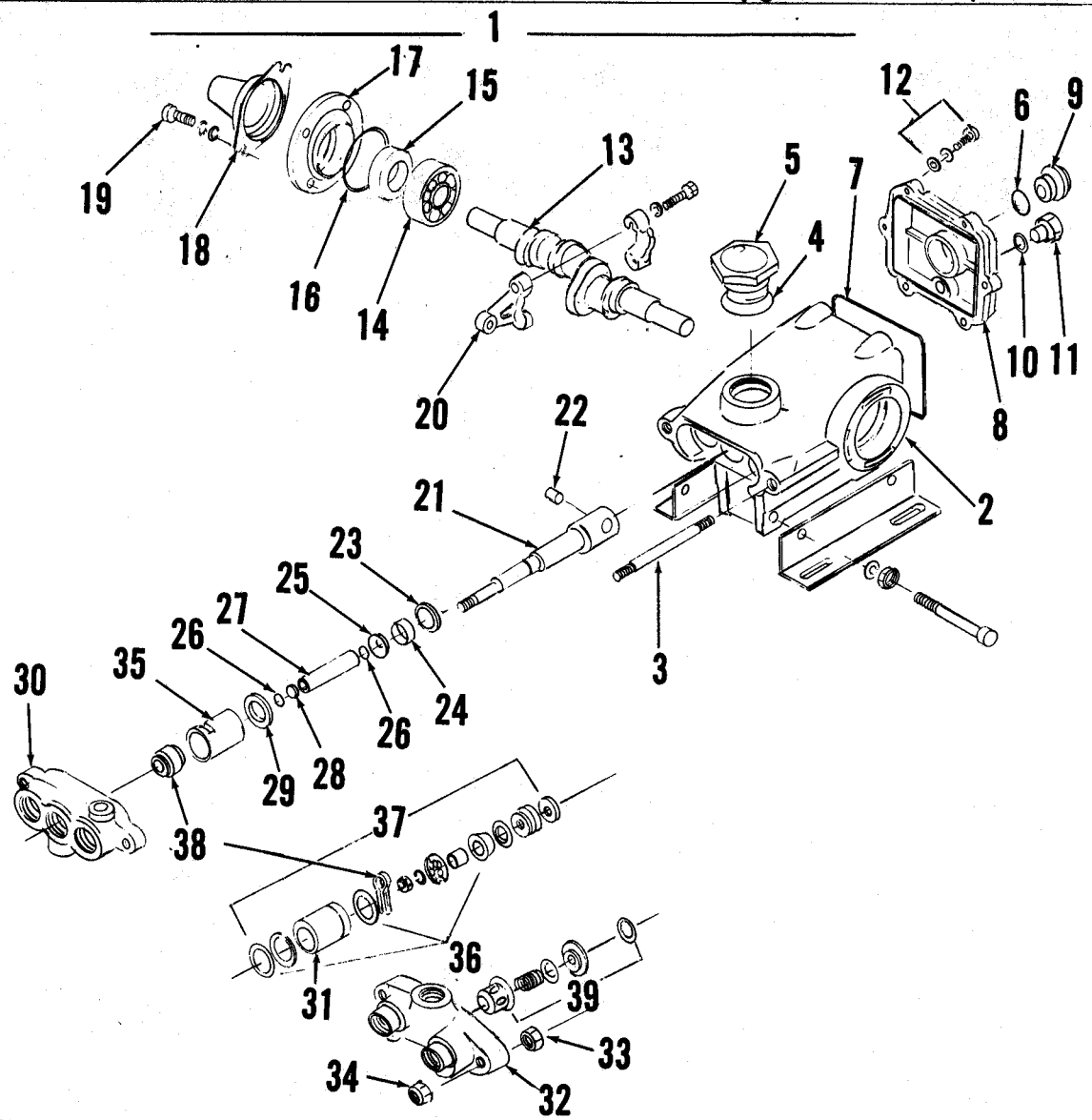
ITEM	PART NO	QTY	DESCRIPTION	ITEM	PART NO	QTY	DESCRIPTION
1	249 527	1	INDICATOR LIGHT	45	755 240	1	PUMP, SUB- SSEMBLY
2	756 514	1	BOOT, TOGGLE SWITCH	46	755 148	1	PUMP TSB 322 PW, G-11
3	740 126	1	SOCKET, DISCONNECT	47	745 540	1	ELBOW, ST. 3/8 x 90 BR
4	469 832	1	TIE, ANCHOR MOUNT 1/4	48	755 687	1	BUSHING, 1/2 x 3/8 BR
5		2	NUT, HEX #10-24	49	755 565	1	NIPPLE, HEX 3/8 x 2 BR
6		2	WASHER, CUT 5/16	50		2	SCREW, SET FL. PT. #10-24 x.50
7		2	SCREW, HEX HD 5/16-18 x.50	51	755 554	1	KEY, SQUARE
8	155 373	2	WASHER, SPRING 5/16	52	755 140	1	SHEAVE, POLY-V
9	382 817	1	STRAIN RELIEF	53	740 136	1	PLUG, PIPE 1/4 BR
10				54	118 117	2	BARB, 1/2 x 1/2 BR
11	756 025	2	WHEEL, 8.00 x 1.75	55	219 932	2	CLAMP, HOSE SAE #6
12	755 210	1	SHROUD ASSEMBLY C/O	56	742 125	1	ELBOW, ST. 1/2 x 90 BR
13	755 202	1	SHROUD WELDMENT	57	477 613	2	CABLE TIE
14	030 292	1	DECAL, ADVANCE	58	755 606	1	HOSE, .50 x .84 x 48"
15	030 288	1	DECAL, STRIPE FRONT	59	755 014	1	HOSE, PULSE 3/8 NPT
16	030 280	1	DECAL, STRIPE R.H.	60	740 152	1	ADAPTER, GHT SWW x 1/2
17	014 119	1	DECAL, STRIPE L.H.	61	752 352	1	FILTER, INLET
18	755 254	1	DECAL, GROUND SYMBOL	62	755 066	1	NIPPLE, 1/2 x 4 BR
19	030 274	1	DECAL, SHROUD	63	744 580	1	PLUG, PIPE 3/8
20		2	SCREW, WIRING 115V	64	369 632	1	ELBOW, ST. 1/4 x 90 BR
21	481 830	2	WASHER, OVAL HD. 1/4-20 x.62	65	745 543	1	ADAPTER, BLKHD 1/4
22	755 230	1	FRAME WELDMENT	66	759 072	1	ADAPTER, 3/8 x 1/4 BR
23	755 242	1	BARB, .25 H (.0150)	67	756 364	1	CLAMP, HOSE SAE #4
24	755 244	1	BARB, .25 G (.0240)	68	755 512	1	INJECTOR, LIQUID
25	755 246	1	BARB, .25 P (.0290)	69	750 363	2	BUSHING, 3/8 x 1/4 BR
26	755 248	1	BARB, .25 E (.0400)	70	755 154	1	HOSE ASSEMBLY, 3/8 x 22"
27	030 284	1	DECAL, BARB	71	742 994	1	TUBE, PVC .25 x 60"
28	200 340	1	WASHER, SHAKEPROOF #10	72	750 857	1	STRAINER
29	478 246	1	SWITCH, TOGGLE DPST	73	743 012	1	BARB, 3/8 x 1/4 S.S.
30	755 170	4	CABLE TIE	74	741 321	1	CLAMP, HOSE
31		5	SCREW, HEX HP5 #10-24 x.50	75	755 509	1	VALVE, UNLOADER TSB 483, G-9
32		5	WASHER, FLAT #10	76	749 319	1	TEE, ST. 1/2 BR
33		16	WASHER, LOCK 5/16	77	755 250	1	MOTOR, 1 H.P. 60 CY.
34		10	NUT, HEX 5/16-18	78	755 252	1	TRIM, 44.00
35	755 184	1	SCREW, SET FL. PT. 1/4-20 x.50	79	755 182	1	CORD SET ASSEMBLY, #14/3 x 10
36	755 234	1	SHEAVE, POLY-V	80	755 168	1	CORD ASSEMBLY, #14/3 x 34"
37	755 238	1	MOUNT, MOTOR	81	755 166	2	WIRE ASSEMBLY, #14 x 3"
38	755 134	4	BELT, POLY-V	82	761 657	1	WAND ASSEMBLY, 18" C/O TSB 605-68
39	755 236	1	STUD, 5/16-18 x 1 1/2	83	761 654	1	WAND WELDMENT
40	015 324	1	MAT, STEP	84	761 706	1	SPRAY GUN TSB 453, G-10
41	015 325	1	NAMEPLATE, ADVANCE	85	030 216	1	DECAL, SPRAY GUN
42	015 325	1	OVERLAY, NAMEPLATE	86	761 698	1	STOP, HANDLE
43	030 290	1	DECAL, WARNING	87	761 647	1	HANDLE, MACHINED
44	163 007	1	SCREW, HEX HD 5/16-18 x2.00	88	761 645	1	QUICK DISCONNECT
		10	WASHER, FLAT 5/16	89	761 606	1	PISTON
		1	GROMMET, .500	90	761 323	2	RING, BACK-UP
				91	761 325	2	O-RING
				92		4	SCREW, SET 1/4-20 x.38
				93	747 062	1	NOZZLE, 1506 BLACK HIGH PRESSURE
				94	761 680	1	NOZZLE, 4030 YELLOW LOW PRESSURE
* Not Shown.							
A REPAIR KIT FOR SPRAY GUN				OPTIONAL ITEMS			
	755 410	1	REPAIR KIT C/O	744 658	1	HOSE, HIGH PRESSURE 25'	
1	755 412	1	BALL, W/PISTON COMPLETE	761 370	1	HOSE, WIRE BRAIDED 40'	
2	755 414	1	SPRING, S.S.	753 070	1	HOSE, HIGH PRESSURE 40'	
3	755 416	1	WASHER	761 422	1	HOSE, WIRE BRAIDED 60'	
4	755 418	2	O-RING	752 556	1	HOSE, HIGH PRESSURE 60'	
5	755 420	1	LOCK RING				
6	755 422	1	WASHER, S.S.	755 568	1	REGULATOR, INLET 1/2"	
				755 052	1	BACKFLOW PREVENTER	
				755 510	1	FILTER, 100 MESH 1/2 NPT	
				501 030	12	OIL, #40 SAE 20 OZ. (12) BOTTLES	



WAND ASSEMBLY

ELECTRICAL SCHEMATIC

INSERT FOR ADVANCE NEW 600 AND 700 SERIES PRESSURE WASHERS



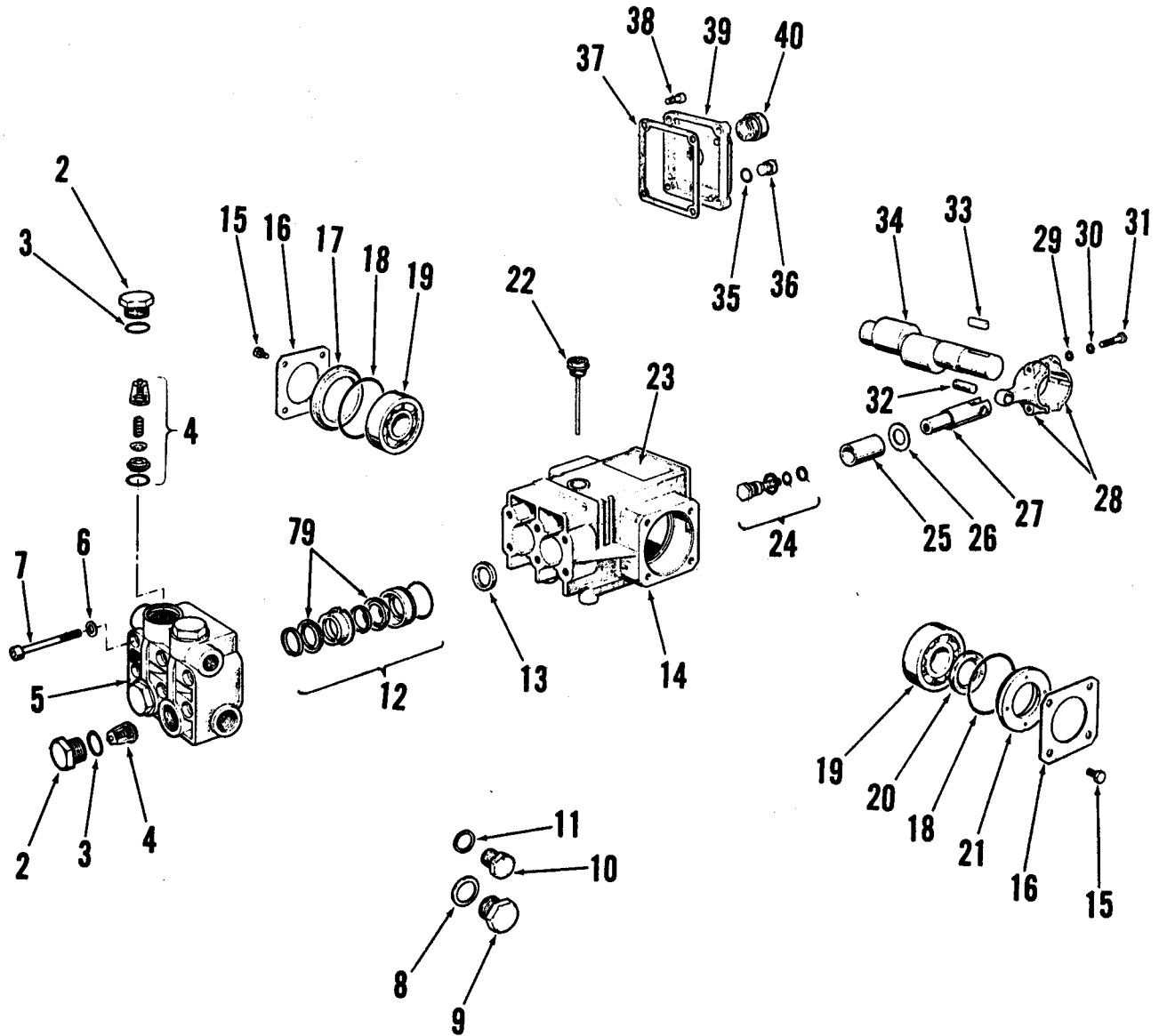
ITEM	PART NO	QTY	DESCRIPTION	ITEM	PART NO	QTY	DESCRIPTION
1	755 148	1	PUMP ASSEMBLY	33	755 930	2	NUT, HEX M8
2	755 981	1	CRANKCASE	34	755 966	2	NUT, FLANGE HEX M8
3	755 982	2	STUD, M8 x 82	35	755 993	3	RETAINER, SEAL
4	755 956	1	O-RING, OIL FILLER CAP	REPAIR KITS (INCLUDE INSTRUCTIONS)			
5	755 957	1	OIL FILLER CAP	36	755 979	1	CUP KIT, C/O
6	755 929	1	O-RING, OIL GAUGE	3		3	CUP
7	755 934	1	O-RING, CRANKCASE COVER	6		3	O-RING, CYLINDER
8	755 983	1	COVER, CRANKCASE	3		1	COTTERPIN
9	755 984	1	OIL GAUGE	1		1	CUP INSERTER
10	755 962	1	O-RING, DRAIN PLUG	37	755 980	1	PISTON KIT, C/O
11	755 985	1	DRAIN PLUG	6		3	O-RING, CYLINDER
12	755 986	6	SCREW, M6 x 20	3		3	BACK-UP RING, CYLINDER
13	755 987	1	CRANKSHAFT	3		3	BAC-CUP PISTON
14	755 950	2	BEARING	3		3	BAC-CUP RING
15	755 954	2	SEAL, OIL	3		3	CUP
16	755 948	2	O-RING, OIL SEAL CASE	3		3	PISTON SPACER
17	755 955	2	CASE, OIL SEAL	3		3	PISTON RETAINER
18	755 998	2	PROTECTOR, SHAFT	3		3	CONICAL WASHER (M6)
19	755 988	8	SCREW, M6 x 16	3		3	NUT (M6)
20	755 989	3	CONNECTING ROD	3		3	COTTERPIN
21	755 990	3	PISTON ROD	3		3	INLET VALVES
22	755 942	3	PIN, PISTON	38	755 905	1	PRRRM-A-LUBE KIT, C/O
23	755 940	3	WASHER, SEAL	3		3	PRRRM-A-LUBE SEALS
24	755 991	3	OIL SEAL	3		3	COTTERPIN
25	755 992	3	BARRIER SLINGER	39	755 904	1	DISCHARGE VALVE KIT, C/O
26	755 953	3	O-RING, SLEEVE (VITON)	3		3	VALVE, SPRING RETAINER
27	755 964	3	RING, BACK-UP	3		3	VALVE SPRING
28	755 965	3	SLEEVE	3		3	VALVE
29	755 938	3	WASHER, SEAL	3		3	O-RING, CYLINDER
30	755 994	1	MANIFOLD, INLET				
31	755 996	3	CYLINDER				
32	755 997	1	MANIFOLD, DISCHARGE				

3.

PUMP ASSEMBLY #755 148

Model 600 series Pressure Washers built after serial # 973513 are fitted with a two-cylinder pump Part No. 755 256. Use this parts sheet when ordering repair parts for pump.

I N S E R T
 F O R
 A D V A N C E
 6 0 0 E
 6 0 0 C
 F O R M
 N O
 0 4 2
 0 8 5
 A N D
 0 4 2
 0 8 3



ITEM	PART NO	QTY	DESCRIPTION	ITEM	PART NO	QTY	DESCRIPTION
1	755 256	1	PUMP ASSEMBLY	21	759 919	1	SPACER
2	759 900	4	PLUG	22	759 921	1	DIP STICK, OIL
3	759 901	4	O-RING	23	030 342	1	DECAL, ADVANCE
4	759 902	1	VALVE UNIT ASSEMBLY (4 REQ'D.)	24	759 938	1	PISTON SCREW ASSEMBLY (1 REQ'd)
5	759 903	1	HEAD, PUMP	25	759 922	2	PISTON
6	759 904	6	WASHER	26	759 923	2	WASHER
7	759 905	6	SCREW, SOC. HD. CAP	27	759 924	2	GUIDE, PISTON
8	759 906	1	WASHER	28	759 925	2	ROD, CONNECTING
9	759 907	1	PLUG	29	759 926	4	WASHER, FLAT
10	759 908	1	PLUG	30	759 927	4	WASHER, LOCK
11	759 909	1	WASHER	31	759 928	4	SCREW
12	759 910	1	CYLINDER CUP ASSEMBLY (2 REQ'd.)	32	759 929	2	PIN, PISTON
13	759 911	1	OIL SEAL (2 REQ'd.)	33	759 930	1	KEY
14	759 912	1	CRANKCASE	34	759 931	1	CRANK SHAFT
15	759 913	8	SCREW	35	759 932	1	O-RING
16	759 914	2	COVER, CRANKCASE	36	759 933	1	PLUG
17	759 915	1	SPACER	37	759 934	1	GASKET, COVER
18	759 916	2	O-RING	38	759 935	4	SCREW
19	759 917	2	BEARING, BALL	39	759 936	1	COVER, CRANKCASE
20	759 918	1	SEAL, OIL	40	759 937	1	INDICATOR, OIL LEVEL

PUMP LUBRICATION: Check oil level in pump crankcase daily. Add SAE #40 wt.oil as needed.