



Electronic Service Manuals

This electronic document is provided as a service to our customers. We do not create the contents of the information contained in this document. Should you have detailed questions pertaining to the information contained in this document, you may contact Michco, or the manufacturer which provided the original information in this electronic deliverable. Michco's only part in this electronic deliverable was the electronic assembly process.

You may contact Michco through the following methods:
Phone (517) 484-9312 or (800) 331-3339 MI, OH, IN only
2011 N. High St. -- Lansing, Michigan -- 48906
Fax: (517) 484-9836
Email: CustServ@Michco.com
Web site: www.Michco.Com
Parts Web site: www.FloorMachineParts.Com

Order Parts on Line at:
www.FloorMachineParts.Com

Directly to Parts & Service:
By Email: **Shop@Michco.com**
By Fax: (517) 702-2041
By Voice: Use numbers above.

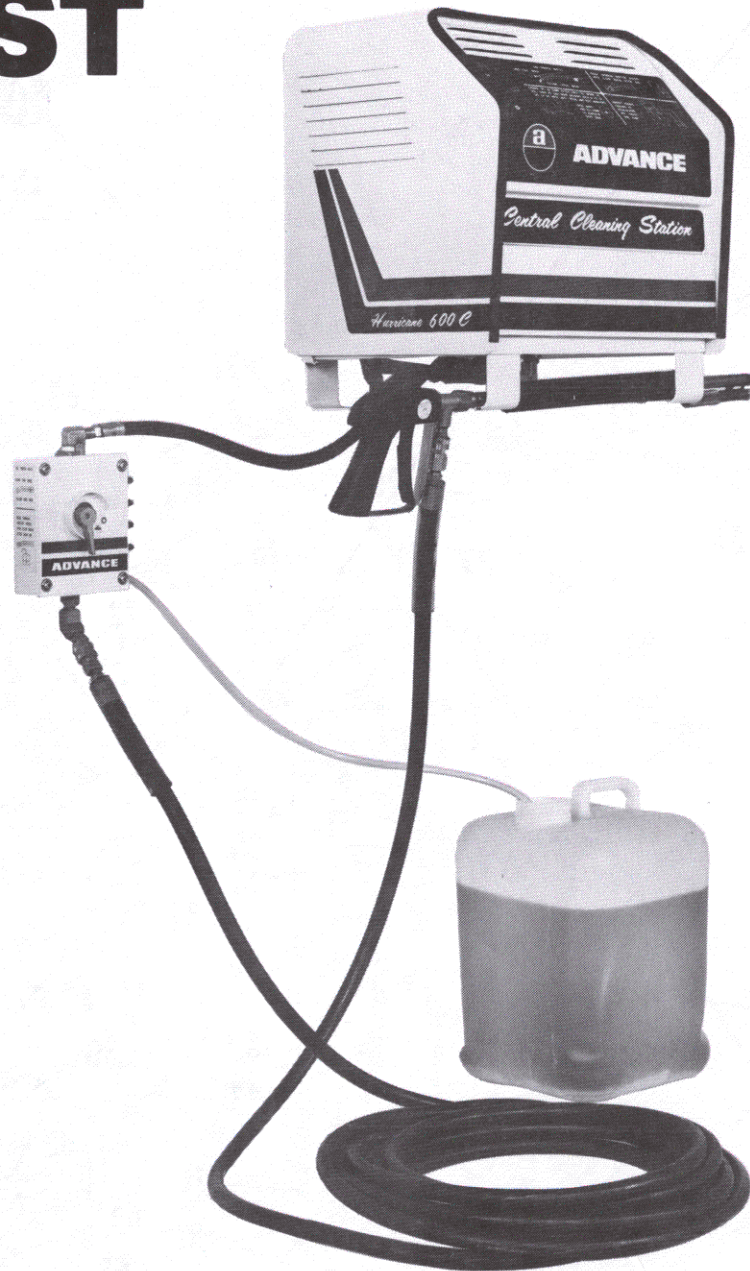
Serving the Cleaning Industry Since 1922

Notice: All copyrighted material remains property of original owners, all trademarks are property of respective owners. Manuals are subject to Manufacturer's reproduction limitations. Originals or reproductions were provided by manufacturers through a request. We make no warranty as to the correctness of information provided in this document and you assume all risk.

HURRICANE 600 C CENTRAL CLEANING STATION W/REMOTE HOOK-UP

OCT. 1982
FORM NO. 042-085

PARTS LIST



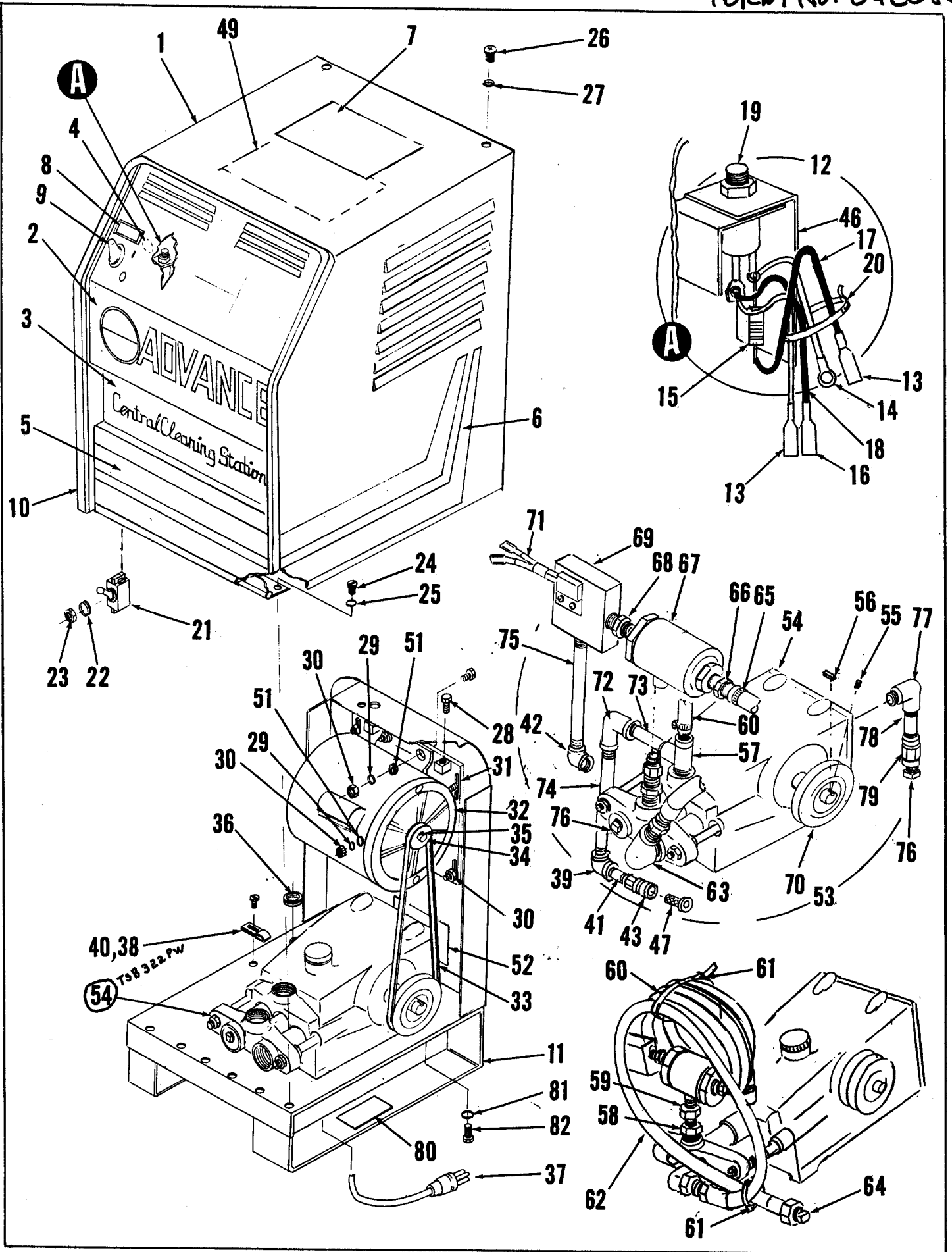
ADVANCE
MACHINE COMPANY

INTERNATIONAL HEADQUARTERS, Spring Park, Minnesota 55384 USA
EUROPE, 4 Rue Jean Engling, L - 1466 Luxembourg
CANADA, 1295 Crestlawn Drive, Mississauga, Ontario L4W 1A9



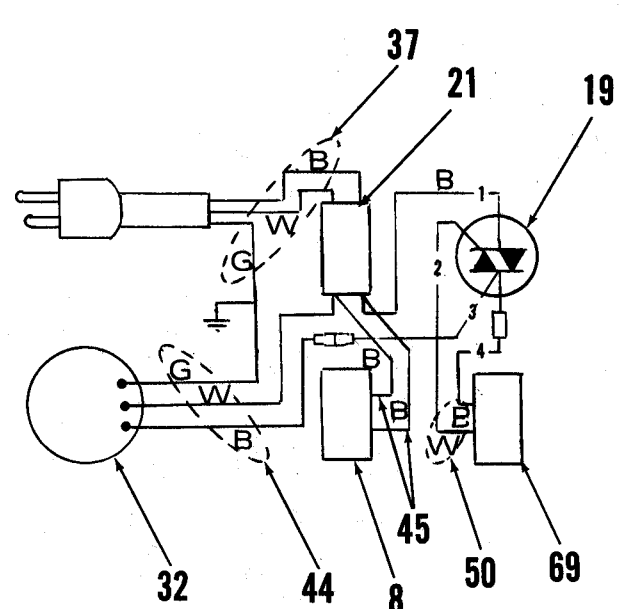
INDEX FOR FORM NUMBER 042085

<u>Description</u>	<u>Location</u>	<u>Page</u>
Pump (3 Cyl.) & Motor Assembly	C1	1
Pump (internal parts - 3 Cyl.)	C4	4
Pump (internal parts - 2 Cyl.)	C5	5
Wand & Remote Station	C3	3



600C CENTRAL STATION

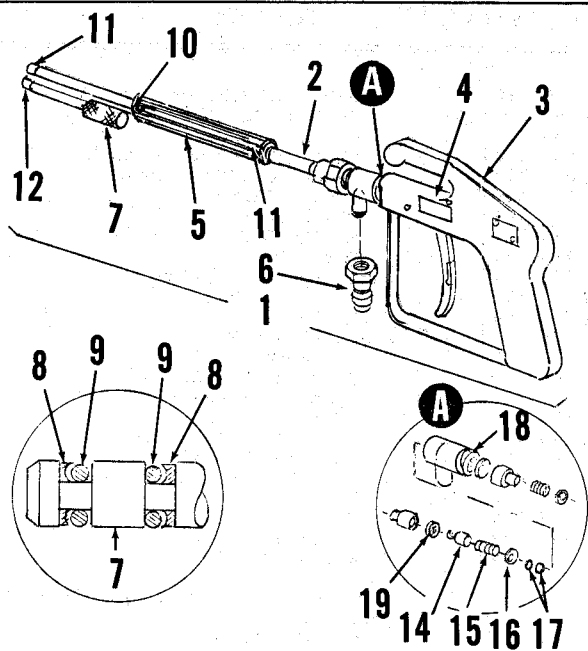
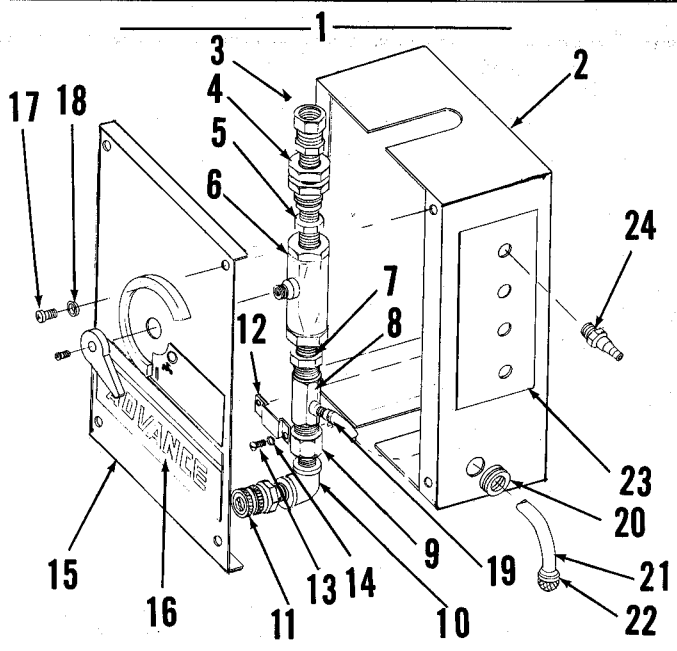
ITEM	PART NO	QTY	DESCRIPTION
1	755 310	1	SHROUD ASSEMBLY, C/O
	755 312	1	SHROUD WELDMENT
2	030 296	1	DECAL, ADVANCE
3	030 294	1	DECAL, CLEANING STATION
4	014 119	1	DECAL, GROUND SYMBOL
5	030 264	1	STRIPE, FRONT
6	030 266	1	STRIPE, L.H.
	030 268	1	STRIPE, R.H.
7	755 128	1	MAT, SHROUD
8	249 527	1	INDICATOR LIGHT, 115V
9	756 514	1	BOOT, TOGGLE SWITCH
10	755 156	1	TRIM, 55.00
11	755 302	1	FRAME WELDMENT
12	755 336	1	TRIAC ASSEMBLY, C/O
13	469 384	2	RECEPTACLE FLAG, 250
14	311 229	1	TERMINAL RING, #6
15	395 402	1	RESISTOR
16	244 138	1	RECEPTACLE TAB .250
17	441 627	12"	WIRE RS STRD #14 BLK
18	219 894	12"	WIRE RS STRD #18 BLK
19	755 338	1	TRIAC
20	478 246	1	CABLE TIE
21	200 340	1	SWITCH, TOGGLE DPST
22		1	WASHER, SHAKEPROOF #10
23		1	NUT, HEX #10-24
24		5	SCREW, HEX WSHR HD. HP5 #10-24 x.50
25		5	WASHER, FLAT #10
26	481 830	2	WASHER, FINISHING 1/4
27		2	SCREW, OVAL HD. 1/4-20 x.62
28		2	SCREW, FLAT HD. 5/16-18 x 2.00
29		10	WASHER, LOCK 5/16
30		10	NUT, HEX 5/16-18
31	755 321	1	MOUNT, MOTOR WELDMENT
32	755 250	1	MOTOR, 1 H.P. 60 CY. Tsb 311 PW
33	755 142	1	BELT, POLY-V
34	755 184	1	SHEAVE, POLY-V
35		2	SCREW, SET FL. PT. 1/4-20 x.50
36	382 817	1	STRAIN RELIEF
37	755 182	1	CORD SET ASSEMBLY, #14/3 x 10
38	478 246	1	CABLE TIE
39	749 355	1	ELBOW, 1/2 x 90 BR
40	469 832	1	TIE, ANCHOR MOUNT
41	749 370	1	NIPPLE, 1/2 x 2-1/2 BR
42	340 782	1	ELBOW, 1/4 x 90 BR
43	740 152	1	ADAPTER, GHT SWV x1/2
44	755 168	1	CORD ASSEMBLY, #14/3 x 34.00
45	755 166	2	WIRE ASSEMBLY #14 x 3.00
46	755 334	1	HEAT SINK
47	752 352	1	FILTER, INLET
48	761 657	1	WAND ASSEMBLY, 18"
49	030 302	1	DECAL, WIRING 115V
50	755 332	1	CORD ASSEMBLY #18/2 x 22.00
51		8	WASHER, FLAT 5/16
52	030 306	1	DECAL, REFLECTOR
53	755 320	1	PUMP, SUB-ASSEMBLY, C/O
54	755 148	1	PUMP, 1200 PSI Tsb 322 PW, G-11
55		2	SCREW, SET FL. PT. #10-24 x.50
56	755 554	1	KEY, SQUARE
57	749 319	1	TEE, ST. 1/2 BR
58	751 687	1	BUSHING, 1/2 x 3/8 BR
59	755 565	1	NIPPLE, HEX 3/8 x 2.00 BR
60	755 606	1	HOSE, .50 x .84 x 48.00
61	477 613	2	CABLE TIE
62	755 014	1	HOSE, PULSE
63	755 540	1	ELBOW, ST 3/8 x 90 BR
64	744 580	1	PLUG, PIPE 3/8 BR
65	219 932	2	CLAMP, HOSE SAE #6
66	118 117	2	BARB, 1/2 x 1/2 BR
67	755 509	1	VALVE, UNLOADER
68	755 322	1	NIPPLE, RD. 3/8 x 1/4 MACH TND
69	755 868	1	FLOW SWITCH
70	755 140	1	SHEAVE, POLY-V
71	755 829	1	WIRE WRAP 5"
72	749 355	1	ELBOW, 1/2 x 90 BR
73	749 370	1	NIPPLE, 1/2 x 2-1/2 BR.
74	753 721	1	NIPPLE, 1/2 x 6 BR
75	755 326	1	NIPPLE, 1/4 x 8.00
76	740 136	2	PLUG, PIPE 1/4 BR
77	369 632	1	ELBOW ST. 1/4 x 90 BR
78	750 688	1	NIPPLE, 1/4 x 1-1/2 BR
79	220 526	1	COUPLING, 1/4 BR
80	015 324	1	NAMEPLATE, ADVANCE
	015 325	1	OVERLAY, NAMEPLATE
81		4	WASHER, LOCK 1/4
82	755 170	4	SCREW, M6 x 1 x 30



WIRING DIAGRAM

REMOTE STATION

18" WAND



ITEM	PART NO	QTY	DESCRIPTION
1	755 380	1	REMOTE STATION ASSEMBLY C/O
2	755 382	1	BOX WELDMENT
3	745 681	1	FITTING, COMPRESSION 1/4" BR
4	745 543	1	ADAPTER, BLKHD 1/4"
5	742 317	1	NIPPLE, HEX 1/4" BR
6	745 669	1	VALVE, 2-WAY 1/4"
7	753 380	1	NIPPLE, RD 3/8 x 1/4"
8	755 512	1	INJECTOR, LIQUID
9	759 072	1	ADAPTER, 3/8 x 1/4" BR
10	749 715	1	ELBOW, 1/4 x 45 BR
11	740 126	1	SOCKET
12	755 388	1	CLAMP, UPPER
13		2	SCREW, PH. RD. HD. 1/4-20 x 1-1/2"
14		2	WASHER, LOCK 1/4"
15	755 390	1	COVER
16	030 286	1	DECAL, ADVANCE
17		4	SCREW, PH. OVAL HD. HP5 #10-32 x 1/2"
18	449 340	4	WASHER, FINISHING
19	756 364	1	CLAMP, HOSE SAE #4
20	163 007	1	GROMMET, .500
21	755 396	1	TUBE, PVC .25 x 72.00
22	750 857	1	STRAINER
23	030 284	1	DECAL, BARB
24	755 242	1	BARB, H (.0150)
*	755 244	1	BARB, G (.0240)
*	755 246	1	BARB, F (.0290)
*	755 248	1	BARB, E (.0400)
*	040 111	1	INSTRUCTION SHEET

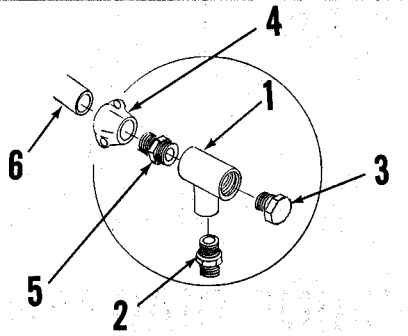
* ITEMS NOT SHOWN

ITEM	PART NO	QTY	DESCRIPTION
1	761 657	1	WAND ASSEMBLY, 18" c/o TSB 605-G8
2	761 654	1	WAND
3	761 706	1	SPRAY GUN
4	030 228	1	DECAL, SPRAY GUN
5	761 646	1	HANDLE, MACHINED
6	761 645	1	QUICK-DISCONNECT
7	761 606	1	PISTON
8	761 323	2	RING, BACK-UP
9	761 325	2	O-RING
10		4	SCREW, SET 1/4-20 x .38
11	747 062	1	NOZZLE, 1506 BLACK HIGH PRESSURE
12	761 680	1	NOZZLE, 4030 YELLOW LOW PRESSURE

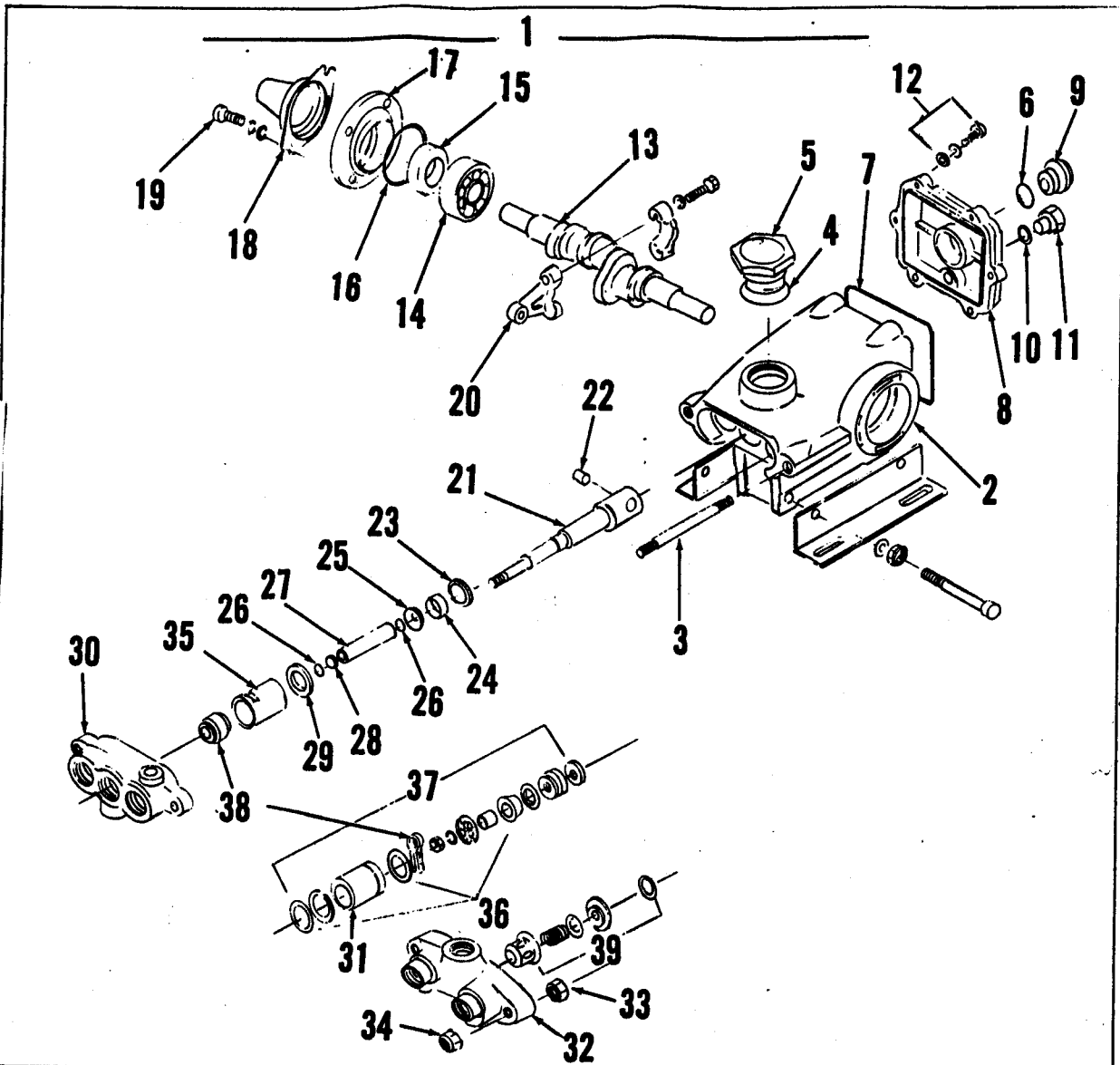
REPAIR KIT FOR SPRAY GUN			
(A)	755 410	1	REPAIR KIT, C/O
14	755 412	1	BALL, W/PISTON COMPLETE
15	755 414	1	SPRING, S.S.
16	755 416	1	WASHER
17	755 418	1	O-RING
18	755 420	1	LOCK, RING
19	755 422	1	WASHER, S.S.

OPTIONAL ITEMS.			
*	744 658		HOSE, HIGH PRESSURE 25'
*	761 370		HOSE, WIRE BRAIDED 40'
*	753 070		HOSE HIGH PRESSURE 40'
*	761 422		HOSE, WIRE BRAIDED 60'
*	752 556		HOSE, HIGH PRESSURE 60'
*	755 568		REGULATOR, INLET 1/2"
*	755 052		BACKFLOW PREVENTER
*	755 510		FILTER, 100 MESH 1/2" NPT
*	501 030		OIL, SAE#40, 12 (20 OZ.) BOTTLES

Parts for Remote Station Hook-Up



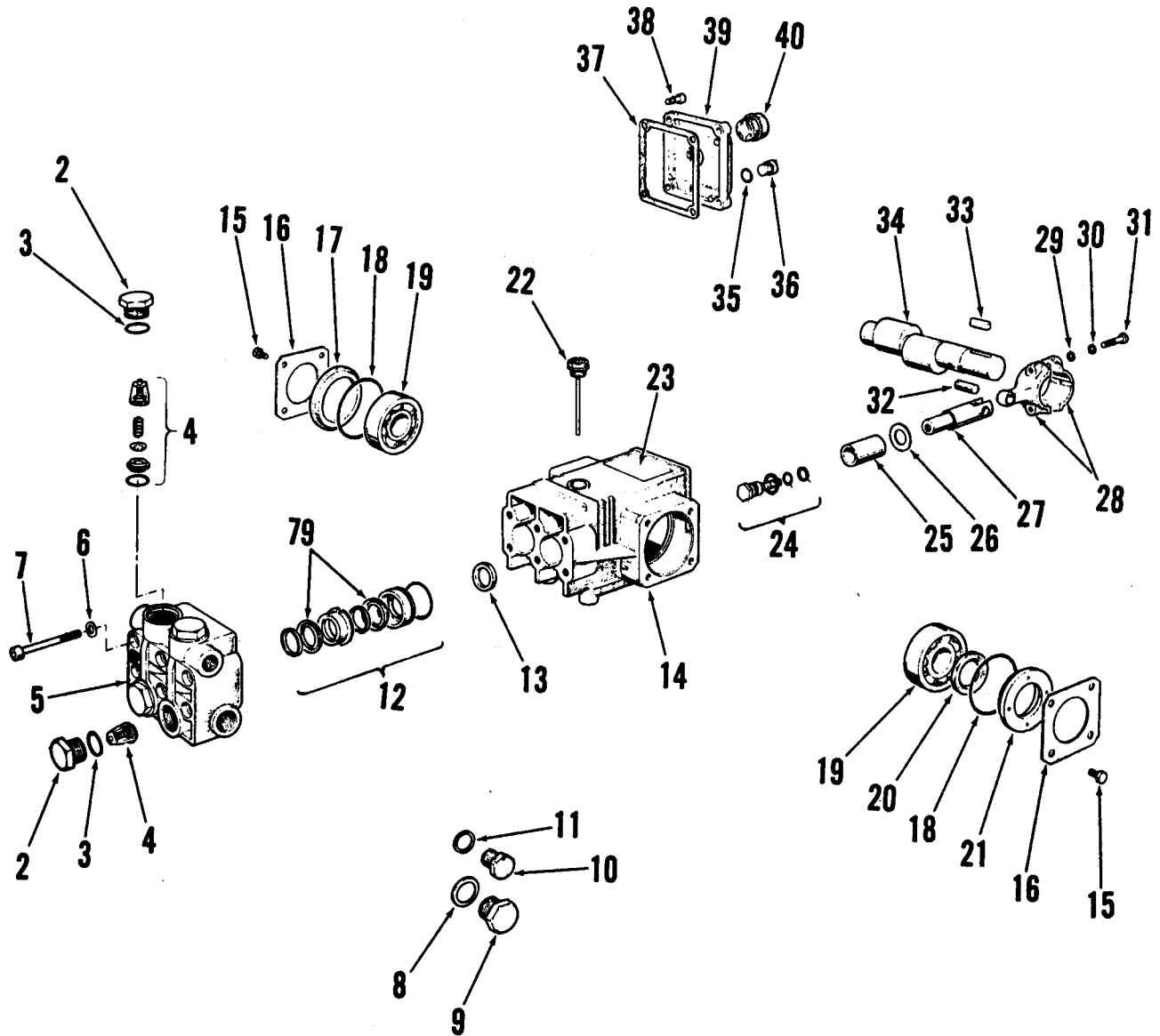
ITEM	PART NO	QTY	DESCRIPTION
1	249 819	1	TEE, 1/4" BR
2	742 317	1	NIPPLE, 1/4" HEX BR
3	740 136	1	PLUG, PIPE 1/4" BR
4	741 321	1	HOSE, CLAMP
5	743 012	1	BARB, 3/8 x 1/4 S.S.
6	755 340	1	HOSE, 3/8 x 60.00



ITEM	PART NO	QTY	DESCRIPTION	ITEM	PART NO	QTY	DESCRIPTION
1	755 148	1	PUMP ASSEMBLY	33	755 930	2	NUT, HEX M8
2	755 981	1	CRANKCASE	34	755 966	2	NUT, FLANGE HEX M8
3	755 982	2	STUD, M8 x 82	35	755 993	3	RETAINER, SEAL
4	755 956	1	O-RING, OIL FILLER CAP	REPAIR KITS (INCLUDE INSTRUCTIONS)			
5	755 957	1	OIL FILLER CAP	36	755 979	1	CUP KIT, C/O
6	755 929	1	O-RING, OIL GAUGE			3	CUP
7	755 934	1	O-RING, CRANKCASE COVER			6	O-RING, CYLINDER
8	755 983	1	COVER, CRANKCASE			3	BACK-UP RING, CYLINDER
9	755 984	1	OIL GAUGE			3	BAC-CUP PISTON
10	755 962	1	O-RING, DRAIN PLUG			3	BAC-CUP RING
11	755 985	1	DRAIN PLUG			3	CUP
12	755 986	6	SCREW, M6 x 20	37	755 980	1	PISTON KIT, C/O
13	755 987	1	CRANKSHAFT			6	O-RING, CYLINDER
14	755 950	2	BEARING			3	BACK-UP RING, CYLINDER
15	755 954	2	SEAL, OIL			3	BAC-CUP PISTON
16	755 948	2	O-RING, OIL SEAL CASE			3	BAC-CUP RING
17	755 955	2	CASE, OIL SEAL			3	CUP
18	755 998	2	PROTECTOR, SHAFT			3	PISTON SPACER
19	755 988	8	SCREW, M6 x 16			3	PISTON RETAINER
20	755 989	3	CONNECTING ROD			3	CONICAL WASHER (M6)
21	755 990	3	PISTON ROD			3	NUT (M6)
22	755 942	3	PIN, PISTON			3	COTTERPIN
23	755 940	3	WASHER, SEAL			3	INLET VALVES
24	755 991	3	OIL SEAL	38	755 905	1	PRRRM-A-LUBE KIT, C/O
25	755 992	3	BARRIER SLINGER			3	PRRRM-A-LUBE SEALS
26	755 953	3	O-RING, SLEEVE (VITON)			3	COTTERPIN
27	755 964	3	RING, BACK-UP	39	755 904	1	DISCHARGE VALVE KIT, C/O
28	755 965	3	SLEEVE			3	VALVE, SPRING RETAINER
29	755 938	3	WASHER, SEAL			3	VALVE SPRING
30	755 994	1	MANIFOLD, INLET			3	VALVE
31	755 996	3	CYLINDER			3	O-RING, CYLINDER
32	755 997	1	MANIFOLD, DISCHARGE				

PUMP ASSEMBLY #755 148

Model 600 series Pressure Washers built after serial # 973513 are fitted with a two-cylinder pump Part No. 755 256. Use this parts sheet when ordering repair parts for pump.



I N S E R T F O R A D V A N C E 6 0 0 E 6 0 0 C F O R M N O 0 4 2 0 8 3 A N D 0 4 2 0 8 3

ITEM	PART NO	QTY	DESCRIPTION	ITEM	PART NO	QTY	DESCRIPTION
1	755 256	1	PUMP ASSEMBLY	21	759 919	1	SPACER
2	759 900	4	PLUG	22	759 921	1	DIP STICK, OIL
3	759 901	4	O-RING	23	030 342	1	DECAL, ADVANCE
4	759 902	1	VALVE UNIT ASSEMBLY (4 REQ'D.)	24	759 938	1	PISTON SCREW ASSEMBLY (1 REQ'd)
5	759 903	1	HEAD, PUMP	25	759 922	2	PISTON
6	759 904	6	WASHER	26	759 923	2	WASHER
7	759 905	6	SCREW, SOC. HD. CAP	27	759 924	2	GUIDE, PISTON
8	759 906	1	WASHER	28	759 925	2	ROD, CONNECTING
9	759 907	1	PLUG	29	759 926	4	WASHER, FLAT
10	759 908	1	PLUG	30	759 927	4	WASHER, LOCK
11	759 909	1	WASHER	31	759 928	4	SCREW
12	759 910	1	CYLINDER CUP ASSEMBLY (2 REQ'd.)	32	759 929	2	PIN, PISTON
13	759 911	1	OIL SEAL (2 REQ'd.)	33	759 930	1	KEY
14	759 912	1	CRANKCASE	34	759 931	1	CRANK SHAFT
15	759 913	8	SCREW	35	759 932	1	O-RING
16	759 914	2	COVER, CRANKCASE	36	759 933	1	PLUG
17	759 915	1	SPACER	37	759 934	1	GASKET, COVER
18	759 916	2	O-RING	38	759 935	4	SCREW
19	759 917	2	BEARING, BALL	39	759 936	1	COVER, CRANKCASE
20	759 918	1	SEAL, OIL	40	759 937	1	INDICATOR, OIL LEVEL

PUMP LUBRICATION: Check oil level in pump crankcase daily. Add SAE #40 wt.oil as needed.

