



# Electronic Service Manuals

This electronic document is provided as a service to our customers. We do not create the contents of the information contained in this document. Should you have detailed questions pertaining to the information contained in this document, you may contact Michco, or the manufacturer which provided the original information in this electronic deliverable. Michco's only part in this electronic deliverable was the electronic assembly process.

You may contact Michco through the following methods:  
Phone (517) 484-9312 or (800) 331-3339 MI, OH, IN only  
2011 N. High St. -- Lansing, Michigan -- 48906  
Fax: (517) 484-9836  
Email: [CustServ@Michco.com](mailto:CustServ@Michco.com)  
Web site: [www.Michco.Com](http://www.Michco.Com)  
Parts Web site: [www.FloorMachineParts.Com](http://www.FloorMachineParts.Com)

Order Parts on Line at:  
**[www.FloorMachineParts.Com](http://www.FloorMachineParts.Com)**

Directly to Parts & Service:  
By Email: **[Shop@Michco.com](mailto:Shop@Michco.com)**  
By Fax: (517) 702-2041  
By Voice: Use numbers above.

**Serving the Cleaning Industry Since 1922**

Notice: All copyrighted material remains property of original owners, all trademarks are property of respective owners. Manuals are subject to Manufacturer's reproduction limitations. Originals or reproductions were provided by manufacturers through a request. We make no warranty as to the correctness of information provided in this document and you assume all risk.

# PARTS LIST

WHIRLAMATIC

MODEL W1000B AFTER S.N. 014039

MODEL 2000 AFTER S.N. 930534

FORM NO. 042111

JULY 1984



© 1984 Advance Machine Company, Spring Park, MN 55384-0275

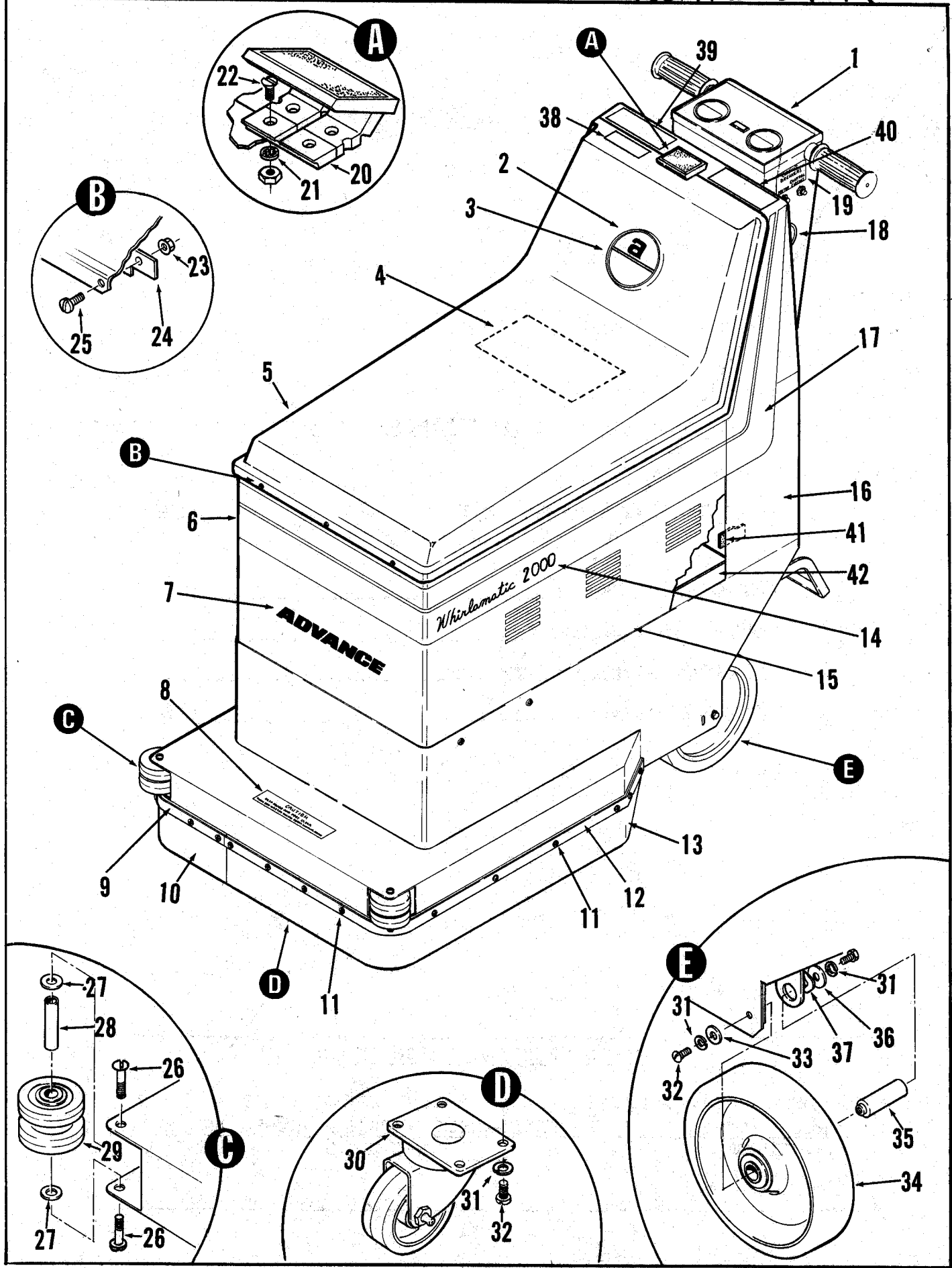
**ADVANCE**  
**MACHINE COMPANY**

INTERNATIONAL HEADQUARTERS, Spring Park, Minnesota 55384-0275  
EUROPE, 4 Rue Jean Engling, L-1466 Luxembourg  
CANADA, 1295 Crestlawn Drive, Mississauga, Ontario L4W 1A9



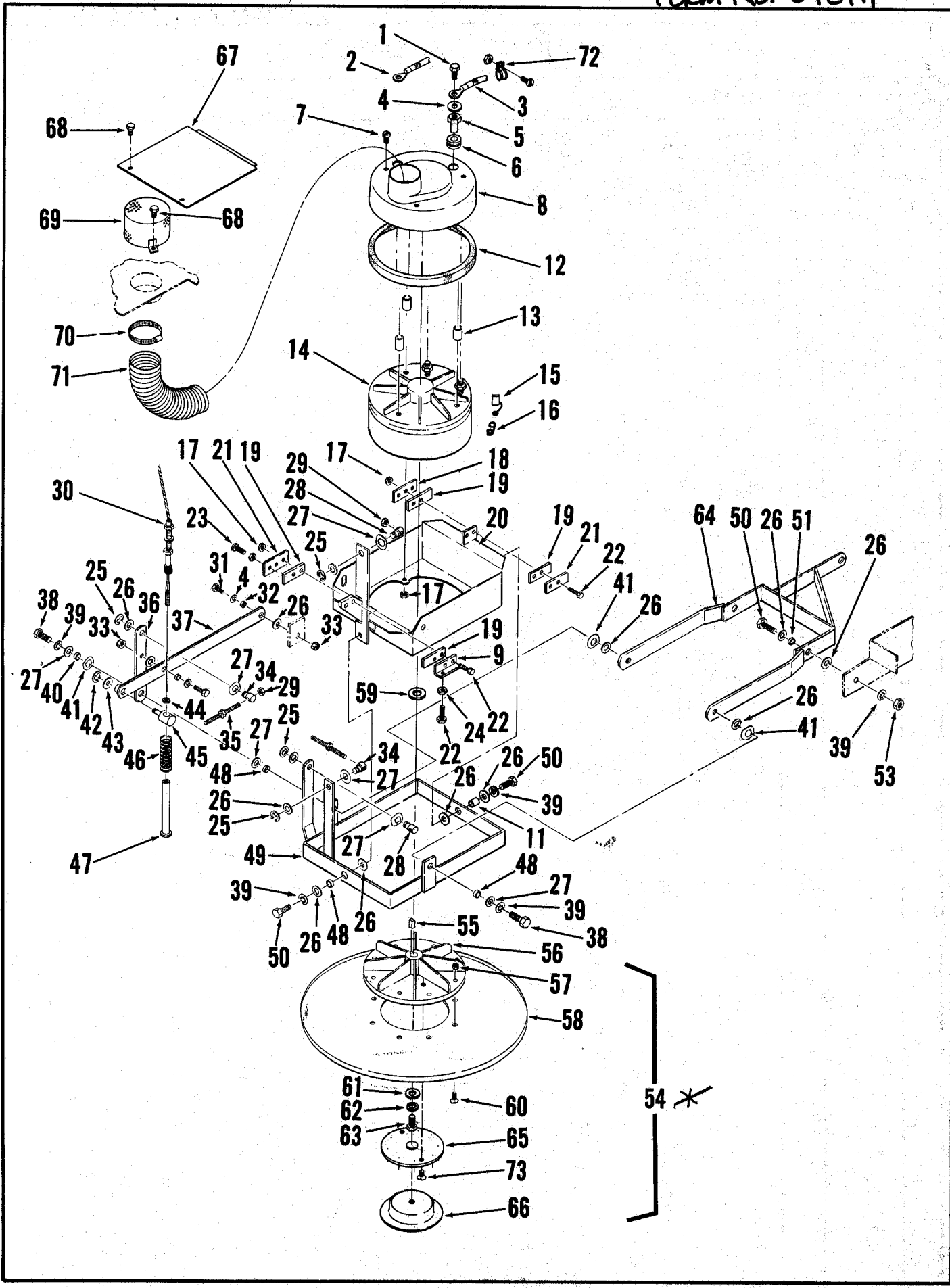
## Index for Form Number 042111

<b>Description</b>	<b>Location</b>	<b>page</b>
Control Handle	B5	5
Pad Drive	B3	3
Wheels, Shroud & Chassis	B1	1
Wiring Diagram	B7	7



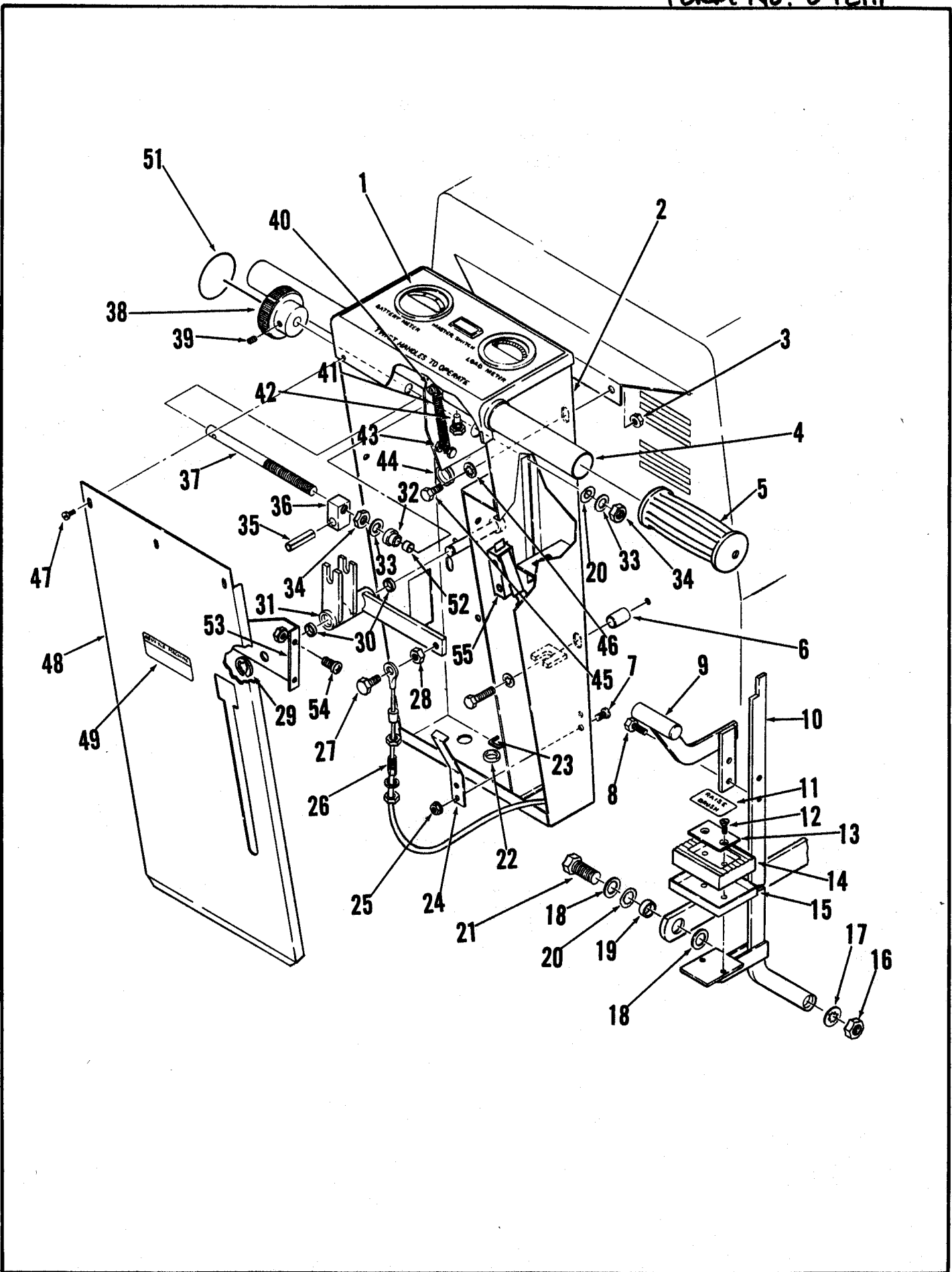
## HOUSING ASSEMBLY

ITEM	PART NO	QTY	DESCRIPTION
1	025 258	1	DECAL, CONTROL PANEL
2	016 398	1	EMBLEM, ADVANCE
3	025 166	1	DECAL, INSERT 1000
	025 262	1	DECAL, INSERT 2000
4	025 292	1	DECAL, WIRING 1000
	025 256	1	DECAL WIRING 2000
5	388 396	1	SHROUD
6	025 135	1	DECAL, STRIPE
7	016 519	1	DECAL, ADVANCE
8	016 106	1	DECAL, CAUTION
9	388 398	1	STRAP, RIGHT
10	388 402	1	BLADE, RIGHT
11		20	SCREW PAN HD. #10-24 X 1/2 W/WHIZ NUT
12	388 400	1	STRAP, LEFT
13	388 404	1	BLADE, LEFT
14	025 176	1	DECAL, WHIRLAMATIC 1000
	025 260	1	DECAL, WHIRLAMATIC 2000
15	388 139	1	HOUSING, BATTERY
16	388 050	1	CHASSIS, MAIN
17	025 252	1	STRIPE, LEFT
	025 250	1	STRIPE, RIGHT
18	025 254	1	DECAL, PAD PRESSURE
19	025 174	1	DECAL, BREAKER
20	388 546	1	LATCH
21		4	WASHER, #6 SHAKEPROOF
22		4	SCREW, #6-32 X 1/2 FLAT HD. W/HEX NUT
23		23	NUT, WHIZ #10-24
24	386 760	1	BRACKET
25		3	SCREW, PAN HD. #10-24 X 3/8
26		4	SCREW, ROUND HD. 1/4-20 X 1/2
27	371 009	4	WASHER
28	386 823	2	BUSHING
29	363 855	4	WHEEL, BUMPER 2.50 X .812
30	206 725	1	CASTER, SWIVEL 3.5 X 1.1
31		8	WASHER, LOCK 1/4
32		4	SCREW, HEX HD. 1/4-20 X 1/2
33		2	WASHER, FLAT 1/4
34	377 945	2	WHEEL 8.00 X 1.62
35	382 035	2	AXLE
36	151 114	2	WASHER, .26 X .90 X .06
37	155 373	2	WASHER, .51 SPRING
38	025 266	1	DECAL, WARNING
39	025 272	1	DECAL, SPANISH
40	025 270	1	DECAL, WARNING
41	200 754	6"	GASKET
42	389 506	1	BATTERY TRAY 1000
	388 140	1	BATTERY TRAY 2000
43	025 363	1	DECAL, CAUTION (NOT SHOWN)
44	389 510	1	STOP, BATTERY TRAY (NOT SHOWN)



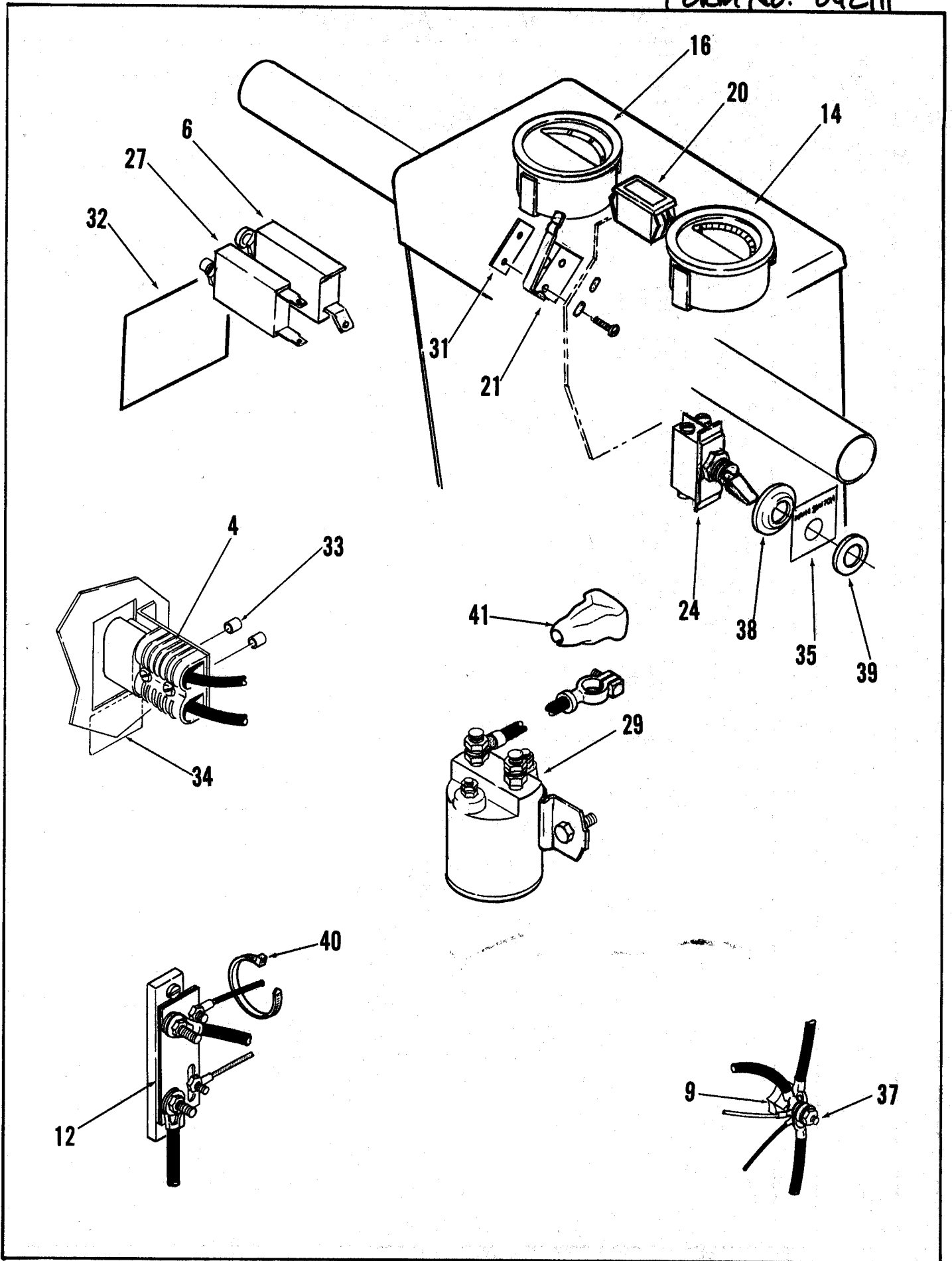
## DRIVE UNIT ASSEMBLY

Item	Part No.	Qty	Description	Item	Part No.	Qty	Description
1		2	Screw, 5/16-24 x 1/2	388290		1	Pin, Centering (2000)
2	388406	1	Cable Assembly #6 x 27.00	48	365030	3	Bushing .50 x .26 x .27
3	388408	1	Cable Assembly #6 x 32.50	49	388275	1	Bracket
4		2	Washer, Flat 5/16	50		4	Screw, Hex Head. 1/2-13 x 1
5	386988	2	Stand-Off	51	360627	2	Bushing .50 x .62 x .41
6	760212	2	Grommet	52		2	Washer, Flat 1/2
7		3	Screw, Pan Head #10-24 x 1/2	53		2	Nut, Hex 1/2
8	388234	1	Cover	54	388272	1	Pad Holder Assembly (#55-61)
9	388342	1	Stop				<b>TSB 370 - G8</b>
10	365030	2	Bushing, (not shown)	55	158135	1	Key, Square #10-24
11	367206	1	Bushing, .50 x .62 x .53	56	388261	1	Hub
12	206058	1	Gasket, Motor	57		8	Nut, Whiz #10-24
13	207489	3	Bushing	58	388259	1	Plate 20"
14	386810	1	Motor, 24V D.C. (1000)	59	367192	1	Washer
	388010	1	Motor, 36V D.C. (2000)	60		8	Screw, Flat Head #10-24 x 3/4
	<b>TSB 356 - G10, TSB 310 - G12, TSB 577 - G1</b>			61	180200	1	Washer
15	386813	A/R	Brush, Motor (1 set of 4)	62		1	Washer, Lock 5/16
			<b>TSB 332 - G11</b>	63		1	Screw, Hex Head 5/16-24 x 3/4
16	180146	4	Spring, Motor Brush	64	388310	1	Arm
17		7	Nut, Whiz 1/4-20	65	182056	1	Pad, Grab Base (1000)
18	386160	3	Flat		388214	1	Plate Assembly (2000)
19	386105	4	Strip, Wear	66	182058	1	Pad, Grab Ring (1000)
20	388263	1	Base, Motor		388204	1	Cup (2000)
21	386162	2	Flat	67	387114	1	Cover
22		4	Screw, Hex Head 1/4-20 x 1	68		4	Screw, #10-24 x 1/2 HP-5
23		1	Screw, 1/4-20 x 1-1/2	69	388192	1	Shield
24		1	Nut, Hex 1/4-20	70	352829	2	Clamp, Hose
25	468834	4	Ring, Retaining	71	387392	1	Hose
26	367214	16	Washer .515 x .93 x .07	72	342319	3	Clamp, Cable
27	155373	4	Washer, Spring	73		2	Screw, Flat Head 1/4-20 x 1/2
28	388302	2	Nut, Adjusting Left				
29		2	Nut, Hex 5/16				
30	454150	1	Cable Assembly				
31		1	Screw, Hex Head 5/16-18 x 1				
32	320595	2	Bushing .31 x .50 x .28				
33		2	Nut, Whiz 5/16-18				
34	388304	2	Nut, Adjusting Right				
35	388300	2	Stud, Adjusting				
36	388252	1	Lever				
37	388296	1	Lever, Arm				
38		2	Screw, Hex Head 1/2-13 x 1-1/2				
39		6	Washer, Shakeproof 1/2				
40	382086	5	Bushing				
41	398056	3	Washer, Spring				
42	321427	1	Ring Retaining Ext 3/8				
43		1	Washer, Flat 3/8				
44		1	Nut, Hex #10-24				
45	386663	1	Pin, Truide				
46	372129	1	Spring, Compression				
47	389502	1	Pin, Centering (1000)				

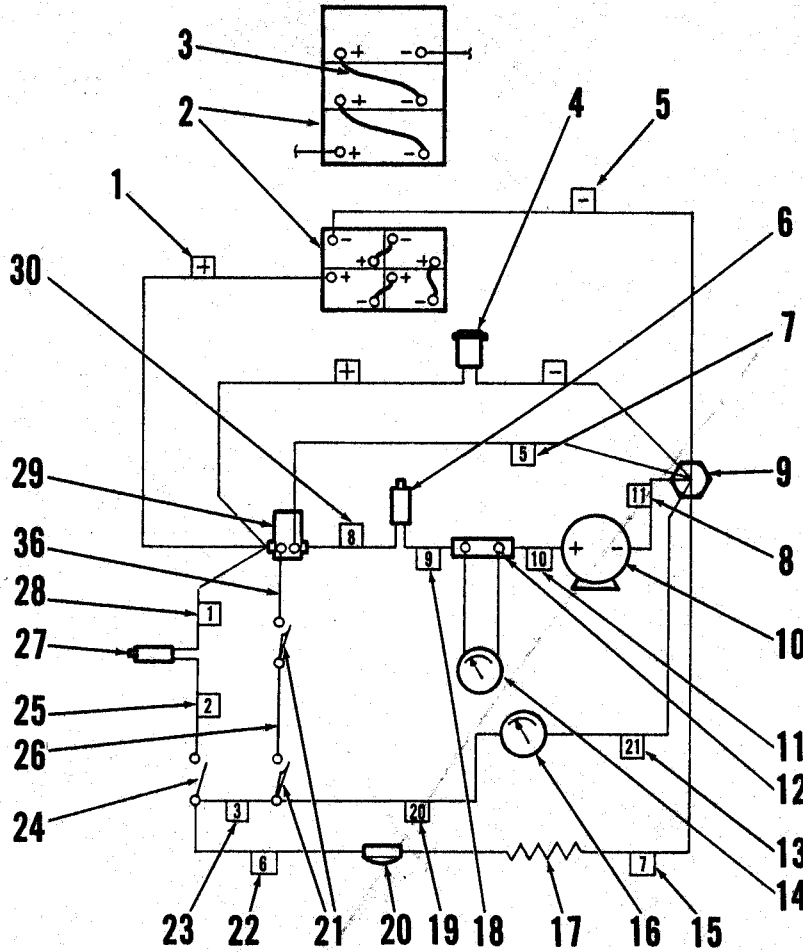


## CONTROL HANDLE ASSEMBLY

ITEM	PART NO	QTY	DESCRIPTION
1	025 258	1	DECAL, CONTROL PANEL
2	388 144	1	PANEL, CONTROL
3		2	NUT, WHIZ 1/4-20
4	388 164	1	TUBE, HANDLE
5	388 545	2	GRIP, HANDLE
6	244 859	2	BUSHING .25 X .37 X 1.0
7		2	SCREW, PAN HD. #8-32 X 3/8
8		2	SCREW, HEX HD. 1/4-20 X 3/4 HP5
9	388 180	1	HANDLE
10	388 184	1	PEDAL, FOOT
11	016 281	1	DECAL, BRUSH
12		2	SCREW, FLAT HD. 1/4-20 X 3/4
13	365 081	1	PLATE
14	365 082	1	PAD; RUBBER
15	365 083	1	CUP, PEDAL
16		1	NUT, HEX 1/2-13
17		1	WASHER, SHAKEPROOF 1/2
18	367 214	2	WASHER, FLAT 1/2
19	382 086	1	BUSHING
20	398 056	2	WASHER, SPRING
21		1	SCREW, HEX HD. 1/2-13 X 1"
22	163 007	2	GROMMET 1/2
23	382 817	1	STRAIN RELIEF
24	386 764	1	BRACKET, SPRING
25		2	NUT, WHIZ #8-32
26	454 150	1	CABLE ASSEMBLY (REF.-SEE DRIVE ASSY)
27		1	SCREW, HEX HD. 1/4-20 X 1"
28		1	NUT, HEX 1/4-20
29	321 427	1	RING, RETAINING
30	368 970	2	BEARING, OILITE
31	388 168	1	BRACKET, PIVOT
32	185 264	1	BUSHING, FLANGE
33		2	WASHER, FLAT 3/8
34		2	NUT, HEX 3/8-24
35		1	PIN, SPRING 5/16 X 1 1/4
36	388 188	1	BLOCK
37	388 190	1	ROD, ADJUSTMENT
38	475 480	1	KNOB, ADJUSTMENT
39		1	SET SCREW #10-24 X 3/8
40		1	SCREW, RD. HD. #8-32 X 1/4
41	328 790	1	SPRING, EXTENSION
42	234 079	1	SCREW
43		1	SCREW, RD. HD. #10-24 X 5/8 W/HEX NUT
44	157 376	2	GROMMET .750
45		2	SCREW, HEX HD. 1/4-20 X 1/2
46		2	WASHER, SHAKEPROOF 1/4
47		3	SCREW, #6 SELF-TAPPING
48	385 745	1	PANEL, BACK
49	015 324	1	NAMEPLATE
50	015 325	1	NAMEPLATE OVERLAY (NOT SHOWN)
51	025 254	1	DECAL, PAD PRESSURE
52	388 326	1	BUSHING
53	388 332	1	PLATE
54		3	#10-24 X 1/2 PH/L HD SCREW W/NUT
55	388 019	2	SWITCH, SNAP SPST NC



# WIRING DIAGRAM



ITEM	PART NO	QTY	DESCRIPTION	ITEM	PART NO	QTY	DESCRIPTION
1	386 975	1	CABLE ASSEMBLY #4 X 29.50	27	454 538	1	BREAKER, CIRCUIT 15A
2	376 014	4	BATTERY 6V (OPTIONAL, 1000)	28	388 414	1	WIRE ASSEMBLY #14 X 12.00
	388 012	3	BATTERY 12V 140 AH (OPTIONAL, 2000)	29	468 358	1	CONTACTOR 24V (1000)
	388 013	3	BATTERY 12V 180 AH (OPTIONAL, 2000)		395 450	1	CONTACTOR 36V (2000)
3	363 936	2	CABLE ASSEMBLY, BATTERY 4 X 15	30	386 967	1	CABLE ASSEMBLY #6 X 8.00
4	386 868	1	PLUG ASSEMBLY, CHARGER (1000)	31	385 747	1	PLATE, NUT
	386 963	1	PLUG ASSEMBLY, CHARGER (2000)	32	025 174	1	DECAL, CIRCUIT BREAKER
5	386 973	1	CABLE ASSEMBLY #4 X 31.50	33	475 411	2	BUSHING .25 X .37 X .48
6	386 725	1	BREAKER, CIRCUIT 50A (1000)	34	054 192	1	DECAL, CHARGER PLUG
	388 015	1	BREAKER, CIRCUIT 60A (2000)	35	016 112	1	DECAL, MAIN SWITCH
7	386 951	1	WIRE ASSEMBLY #14 X 9.5	36	755 600	1	WIRE ASSEMBLY #14 X 13.00
8	388 406	1	CABLE ASSEMBLY #6 X 27.00	37	105 274	1	STUD
9	469 858	1	STANDOFF, INSULATED	38	372 858	1	WASHER, OFFSET
10	386 810	1	MOTOR 24V D.C. (1000)	39	372 862	1	WASHER, FLAT
	388 010	1	MOTOR 36V D.C. (2000)	40	478 246	11	CABLE TIE
11	388 408	1	CABLE ASSEMBLY #6 X 31.50	41	372 637	8	BOOT, BATTERY POST (6 ON 2000)
12	386 793	1	SHUNT				
13	388 418	1	WIRE ASSEMBLY #14 X 22				
14	389 526	1	AMMETER				
15	386 945	1	WIRE ASSEMBLY #14 X 19				
16	389 508	1	METER, BATTERY COND. (1000)				
	448 662	1	METER, BATTERY COND. (2000)				
17	395 404	1	RESISTOR (2000 ONLY)				
18	388 412	1	CABLE ASSEMBLY #6 X 10.00				
19	388 416	1	WIRE ASSEMBLY #14 X 6.00				
20	467 410	1	LIGHT INDICATOR				
21	388 019	2	SWITCH, SNAP SPST NC				
22	386 957	1	WIRE ASSEMBLY #14 X 9.75				
23	386 955	1	WIRE ASSEMBLY #14 X 8				
24	207 075	1	SWITCH, MAIN				
25	386 961	1	WIRE ASSEMBLY #14 X 6.50				
26	388 242	1	WIRE ASSEMBLY #14 X 19				



Nilfisk-Advance, Inc.  
14600 21st Avenue North  
Plymouth, MN, 55447-3408  
[www.nilfisk-advance.com](http://www.nilfisk-advance.com)  
Phone: 800-989-2235  
Fax: 800-989-6566  
©2001 Nilfisk-Advance, Inc.,  
Plymouth, MN 55447-3408  
Printed in the U.S.A.