



Electronic Service Manuals

This electronic document is provided as a service to our customers. We do not create the contents of the information contained in this document. Should you have detailed questions pertaining to the information contained in this document, you may contact Michco, or the manufacturer which provided the original information in this electronic deliverable. Michco's only part in this electronic deliverable was the electronic assembly process.

You may contact Michco through the following methods:
Phone (517) 484-9312 or (800) 331-3339 MI, OH, IN only
2011 N. High St. -- Lansing, Michigan -- 48906
Fax: (517) 484-9836
Email: CustServ@Michco.com
Web site: www.Michco.Com
Parts Web site: www.FloorMachineParts.Com

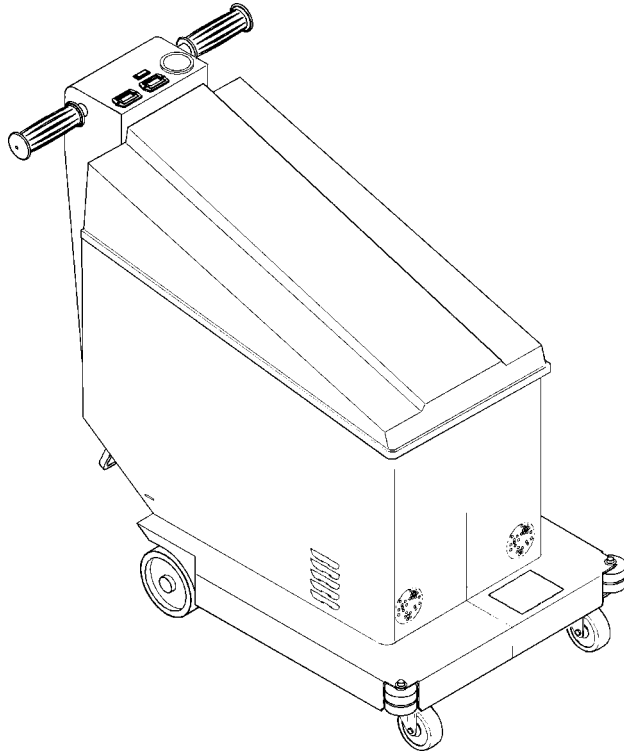
Order Parts on Line at:
www.FloorMachineParts.Com

Directly to Parts & Service:
By Email: **Shop@Michco.com**
By Fax: (517) 702-2041
By Voice: Use numbers above.

Serving the Cleaning Industry Since 1922

Notice: All copyrighted material remains property of original owners, all trademarks are property of respective owners. Manuals are subject to Manufacturer's reproduction limitations. Originals or reproductions were provided by manufacturers through a request. We make no warranty as to the correctness of information provided in this document and you assume all risk.

Whirlamatic™ VS 20



PARTS LIST

Advance MODEL 56393705



Advance

by Nilfisk-Advance

10/93 revised 2/03 FORM NO. 56042281

DESCRIPTION	PAGE
CHASSIS AND SHROUD	4-5
HANDLE ASSEMBLY	6-7
PAD DRIVE ASSEMBLY	8-9
DRIVE MOTOR	10-11
WIRING DIAGRAM	12-13

WHEN ORDERING PARTS

- * Use the 8 digit numbers from the "Ref. No." columns in this parts list.
- * Specify the model and serial number of the machine.
- * Use the space below to record the model and serial number for future reference.

Model _____ Serial No. _____

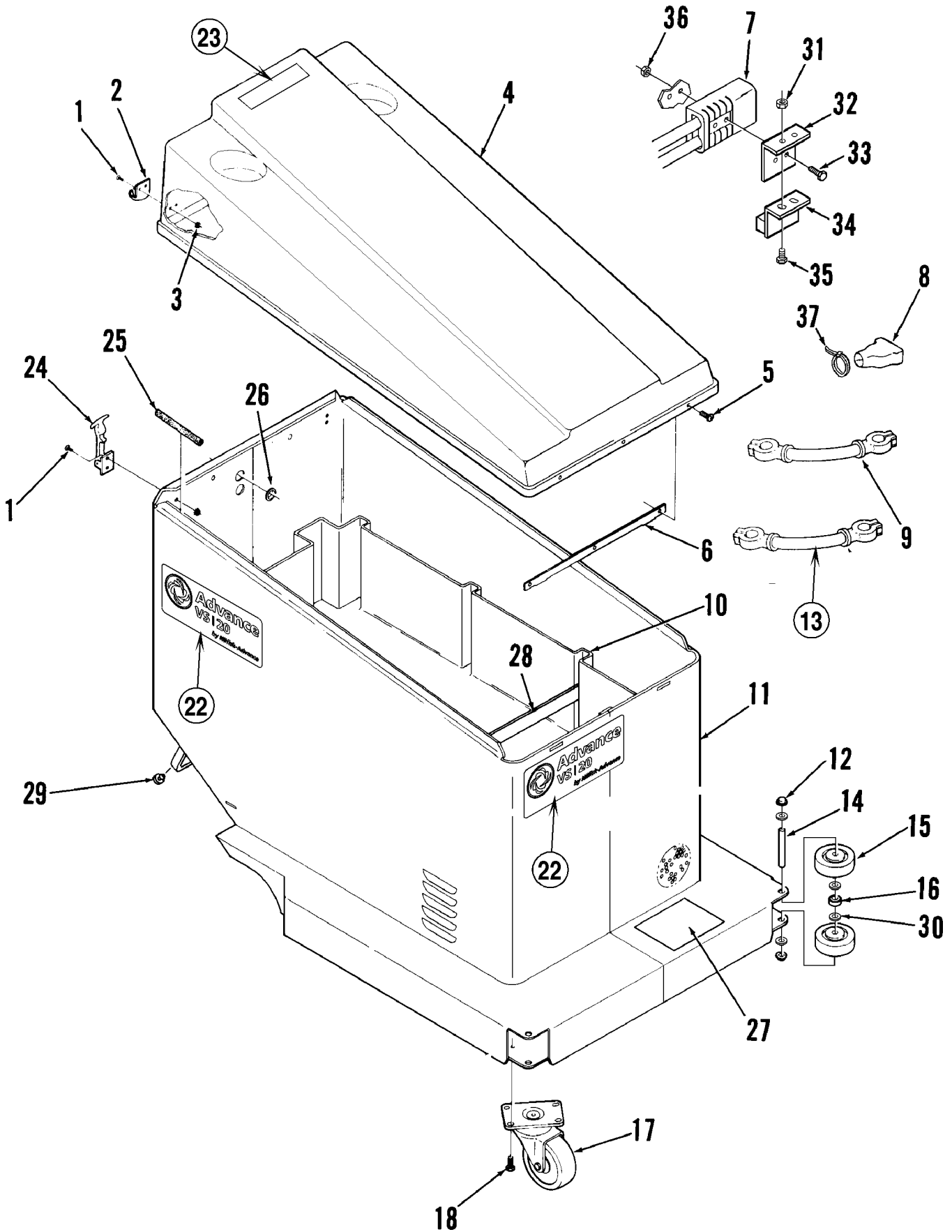
CHASSIS AND SHROUD

93-10

4

Whirlamatic™ VS 20

00-9



93-10	CHASSIS AND SHROUD		
00-9	Whirlamatic™ VS 20		5

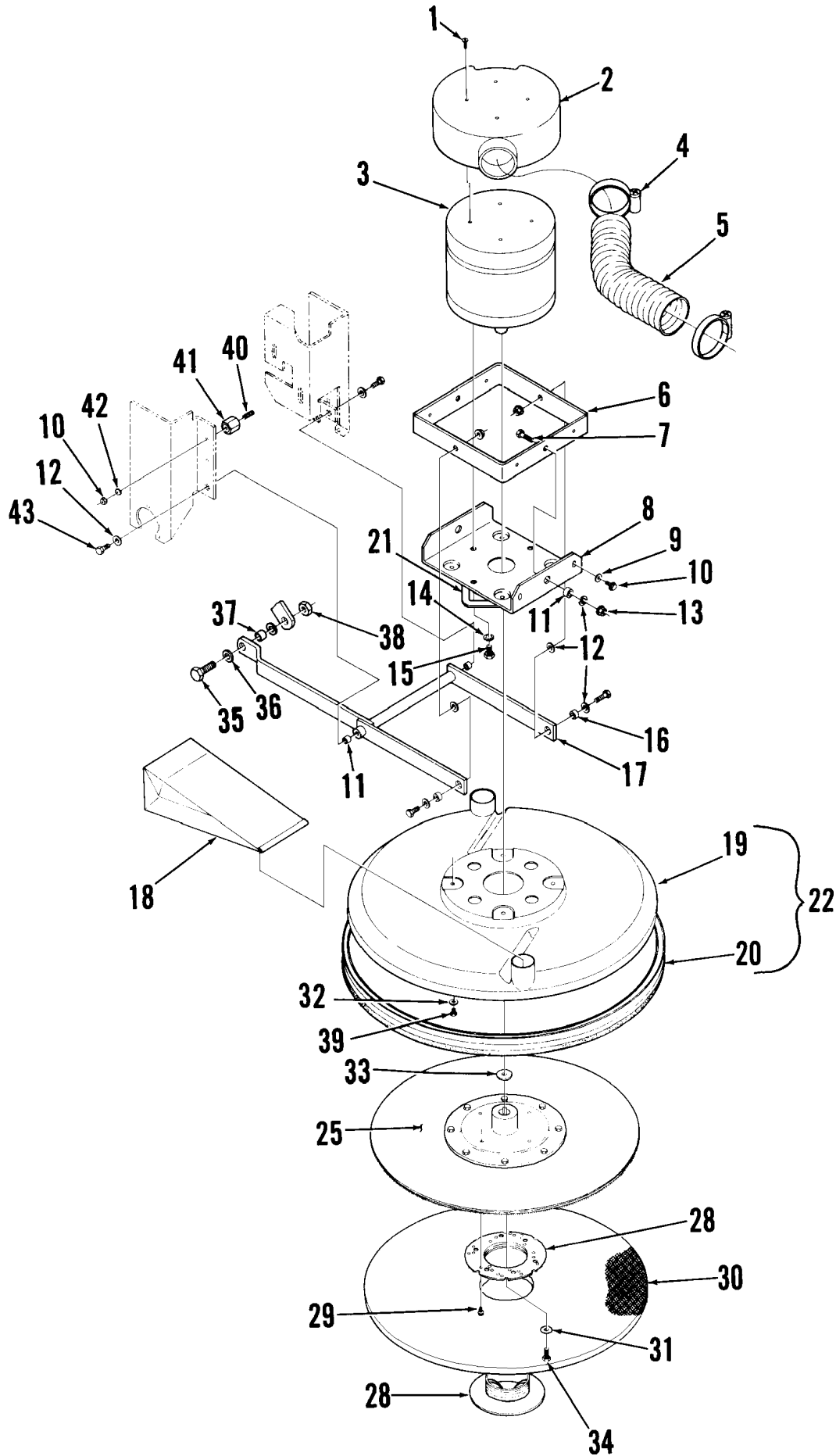
Item	Ref. No.	Qty	Description
	56393561	1	Shroud Assembly (#1-6)
1	56001904	8	#6-32 x 3/8 Screw
2	56393559	2	Keeper
3	56002830	8	#6-32 Nut
4	56393503	1	Shroud
5	56002519	3	#10-24 x 3/8 Screw
6	56393539	1	Bracket
7	56393741	1	Battery Charger Connector with Wires
8	56372673	12	Battery Boot
9	56363936	2	Battery Cable TSB 730
10	56393574	1	Battery Tray
11	56393730	1	Chassis
12	56262534	4	Cap
13	56363928	3	Battery Cable TSB 730
14	56393543	2	Pin
15	56363855	4	Wheel
16	56328022	2	Bushing
17	56206725	2	Caster
18	56002513	10	1/4-20 x 1/2 Screw
22	56016416	1	Decal, VS 20
23	56015171	1	Decal, Important
24	56393560	2	Latch
25	56393549	2	Trim
26	56157376	2	Grommet
27	56015120	1	Decal, Pad Replacement
28	56393578	1	Battery Retaining Strap
29	56393581	2	Bumper
30	56163767	8	Spring Washer
31	56002768	2	#10-24 Nyloc Nut
32	56393582	1	Switch Bracket
33	56001833	2	1/4-20 x 1.5 Screw
34	56462362	1	Charger Interlock Switch
35	56002503	2	#10-24 x .5 Screw
36	56002708	2	1/4-20 Nyloc Nut
37	56478246	12	Wire Tie
*	56386973	1	Battery Cable TSB 730
*	56324284	1	Battery Cable TSB 730

* = Not Shown

93-10	HANDLE ASSEMBLY			
03-2	Whirlamatic™ VS 20			7

Item	Ref. No.	Qty	Description	Item	Ref. No.	Qty	Description
	56393735	1	Handle Assembly (#1-76)	49	56001830	2	1/4 Shakeproof Washer
1	56393264	2	Handle Bearing	50	56002040	2	1/4-20 Jam Nut
2	56324131	1	Handle Bar	51	56002530	4	1/4-20 x .38 Screw
3	56324033	1	Spring	52	56395450	1	Contactora
4	56324133	1	Handle Spring Lever	53	56002744	2	#10-24 x .88 HP5 Screw
5	56392859	1	Pulley	54	56393696	1	Bearing Block Assembly
6	56001935	4	#10-24 x .19 Set Screw	55	56200123	2	Bushing
7	56002793	4	5/16-18 x .75 Screw	56	56002510	2	#10-24 x .62 HP5 Screw
8	56320595	4	Bushing	57	56393520	1	Pivot
9	56002826	4	5/16-18 Nut	58	56002701	1	5/16-18 Nyloc Nut
10	56900481	3	Shoulder Bolt	59	56393534	1	Support
11	56324022	1	Belt	60	56002769	1	3/8-16 Nyloc Nut
12	56324513	1	Pulley	61	56002063	1	3/8 Flat Washer
13	56002279	2	#8-32 x .25 Set Screw	62	56171177	1	Spring
14	56389527	1	Ammeter TSB 672	63	56440760	2	Washer
15	56389433	1	Red Indicator Light, 24V (before February 1998)	64	56367184	2	Thrust Bearing
	56393863	1	Red Indicator Light, 36V (after January 1998)	65	56471193	1	Grip
16	56393717	1	Battery Fuel Gauge	66	56393528	1	Lever TSB 672
17	56015562	1	Decal, Control Panel	67	56002520	2	#10-24 x .5 HP5 Screw
18	56002519	7	#10-24 x .38 HP5 Screw	68	56386793	1	Shunt
19	56324119	1	Bracket	69	56393716	1	Stop Bracket
20	56454740	1	Potentiometer	70	56393722	1	Circuit Breaker 70 Amp
21	56393569	1	Switch	*	56002192	2	#10-24 x .75 Screw
22	56393718	1	Hour Meter **	71	56454538	1	Circuit Breaker 15 Amp
23	56025264	1	Decal, Cable Routing	72	56393312	1	Rocker Switch
24	56001873	1	3/8-18 x 2.5 Screw	73	56001878	2	1/4-20 x 1.25 Screw
25	56002606	1	5/16-18 x 3.25 Screw	74	56324120	2	Handle Tube
26	56015564	1	Decal, Side Panel	75	56388545	2	Grip
27	56015422	1	Decal, Power	*	56377525	1	Diode Assembly
28	56393325	1	Key Lock	*	56389453	1	Resistor Assembly 330 Ohm .5W
	56393415	1	Replacement Key	*	56478246	7	Cable Tie
29	56393726	1	Handle Weldment	*	56469832	1	Tie Anchor
30	56301636	1	Main Switch	76	56393741	1	Charger Connector with Wires
31	56001861	2	1/4-20 x .38 Screw	77	56002513	2	1/4-20 x .5 HP5 Screw
32	56001833	1	1/4-20 x 1.5 Screw	78	56393725	1	Handle
33	56002503	1	#10-24 x .5 Screw	79	56321427	2	Retaining Ring
34	56002098	2	1/4 Flat Washer	80	56388184	1	Pedal Lever
35	56207489	1	Bushing	81	56002561	2	1/4-20 Keps Nut
36	56244859	1	Bushing	82	56386314	1	1/4-20 Leg Leveler
37	56002840	3	1/4-20 Nyloc Nut	86	56365002	1	Pedal Pad
38	56003009	2	#6-32 x 1 Screw		56393583	1	Pedal Assembly (#80-86)
39	56375334	1	Bushing	87	56002021	1	5/16-18 x .38 Set Screw
*	56002011	1	#10 Shakeproof Washer	88	56367354	1	Collar
40	56393530	1	Lever	89	56372129	1	Spring
41	56002768	4	#10-24 Nyloc Nut	90	56393522	1	Rod
*	56001954	1	#10 Flat Washer	91	56002519	2	#10-24 x .38 HP5 Screw
42	56393721	1	Speed Control	92	56393723	1	Panel
43	56377721	2	Spacer	93	56015119	1	Decal, Caution
44	56376015	1	Nut Plate	94	56016069	1	Decal, Wiring
45	56324362	1	Switch	95	56009024	2	Wsh, Bowed .375 x .84 x .06
46	56344621	1	Grommet	96	56001954	2	Wsh, Fit SAE #10
47	56469858	2	Insulated Stand-Off				
48	56150274	2	Stud				

* = Not Shown



93-10	PAD DRIVE ASSEMBLY		
00-9	Whirlamatic™ VS 20		9

Item	Ref. No.	Qty	Description
	56393502	1	Drive Unit Assembly (#1-17)
1	56002530	4	1/4-20 x 3/8 Screw
2	56393576	1	Cover
3	56389422	1	Motor TSB 672
*	56389371	1	Carbon Brush Set
*	56389395	1	Brush Spring Set
4	56352829	4	Hose Clamp
5	56387392	2	Hose
6	56393542	1	Frame
7	56003073	4	5/16-18 x 1 Bolt
8	56393510	1	Motor Mount
9	56002098	2	1/4 Flat Washer
10	56002040	2	1/4-20 Jam Nut
11	56391840	4	Bushing
12	56001939	8	5/16 Flat Washer
13	56002701	8	5/16-18 Nut
14	56002206	4	3/8 Shakeproof Washer
15	56002663	4	3/8-16 x 1/2 Bolt
16	56244941	2	Bushing
17	56393551	1	Linkage
18	56391185	2	Bag (part no. is for pkg of 6)
19	56393504	1	Shroud
20	56393565	1	Skirt
21	56200751	1	Gasket (61 cm)
22	56393566	1	Dust Shroud Assembly (#19-21)
25	56393650	1	Pad Holder (includes #28-29)
28	56393567	1	Retainer
29	56002519	4	#10-24 x 3/8 Screw
30		1	Pad (not included)
31	56180200	1	Washer
32	56151114	4	Washer
33	56367192	1	Washer
34	56002596	1	5/16-24 x 3/4 Bolt
35	56001895	1	1/2-13 x 1 Bolt
36	56367214	2	Washer
37	56393373	1	Bushing
38	56002843	1	1/2-13 Nyloc Nut
39	56002530	4	1/4-20 x .38 Screw
40	56150274	2	Stud
41	56469858	2	Insulated Stand-Off
42	56001803	2	1/4 Shakeproof Washer
43	56002956	4	5/16-18 x 3/4 Hex Loc Bolt

* = Not Shown

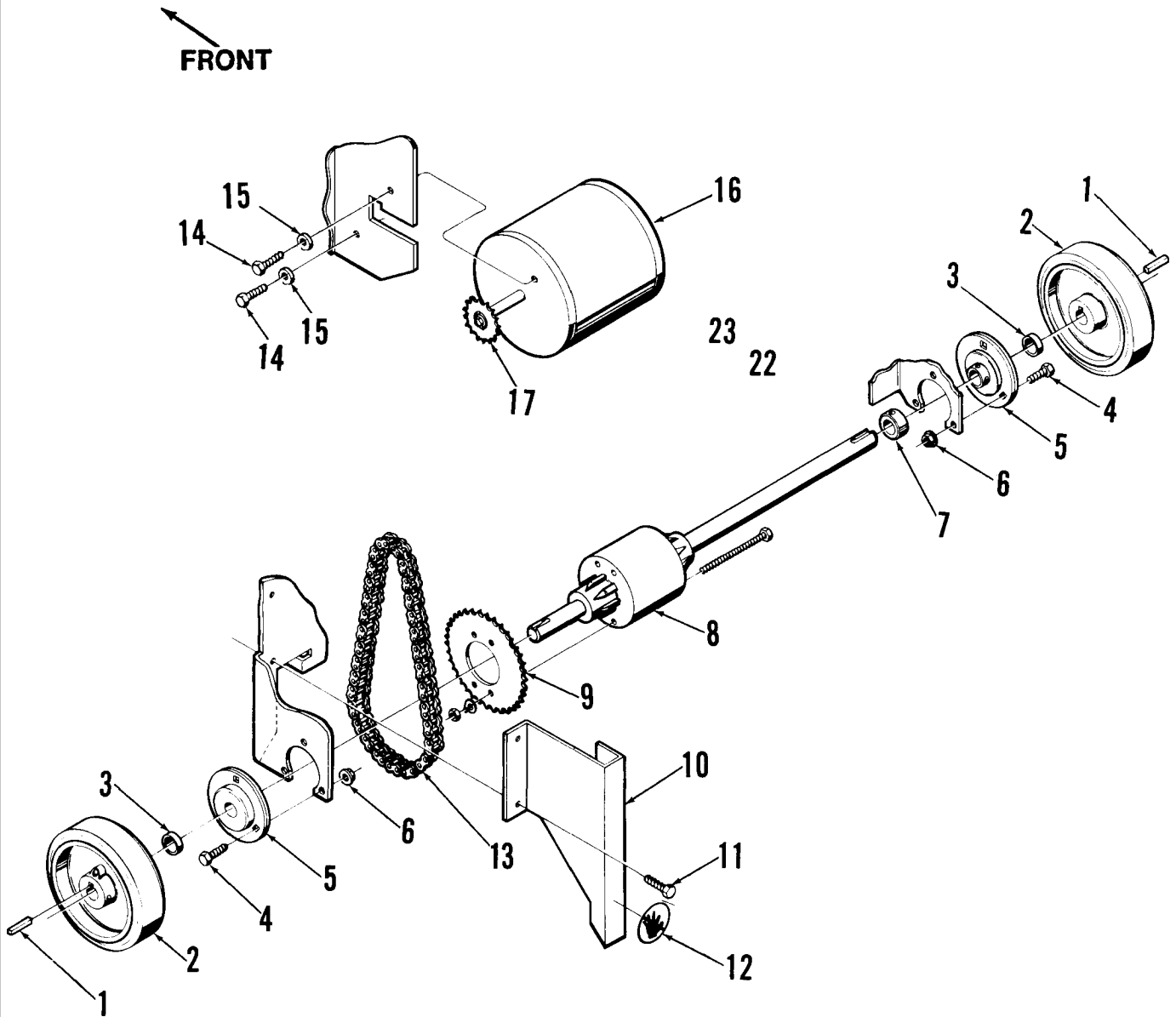
DRIVE MOTOR

93-10

10

Whirlamatic™ VS 20

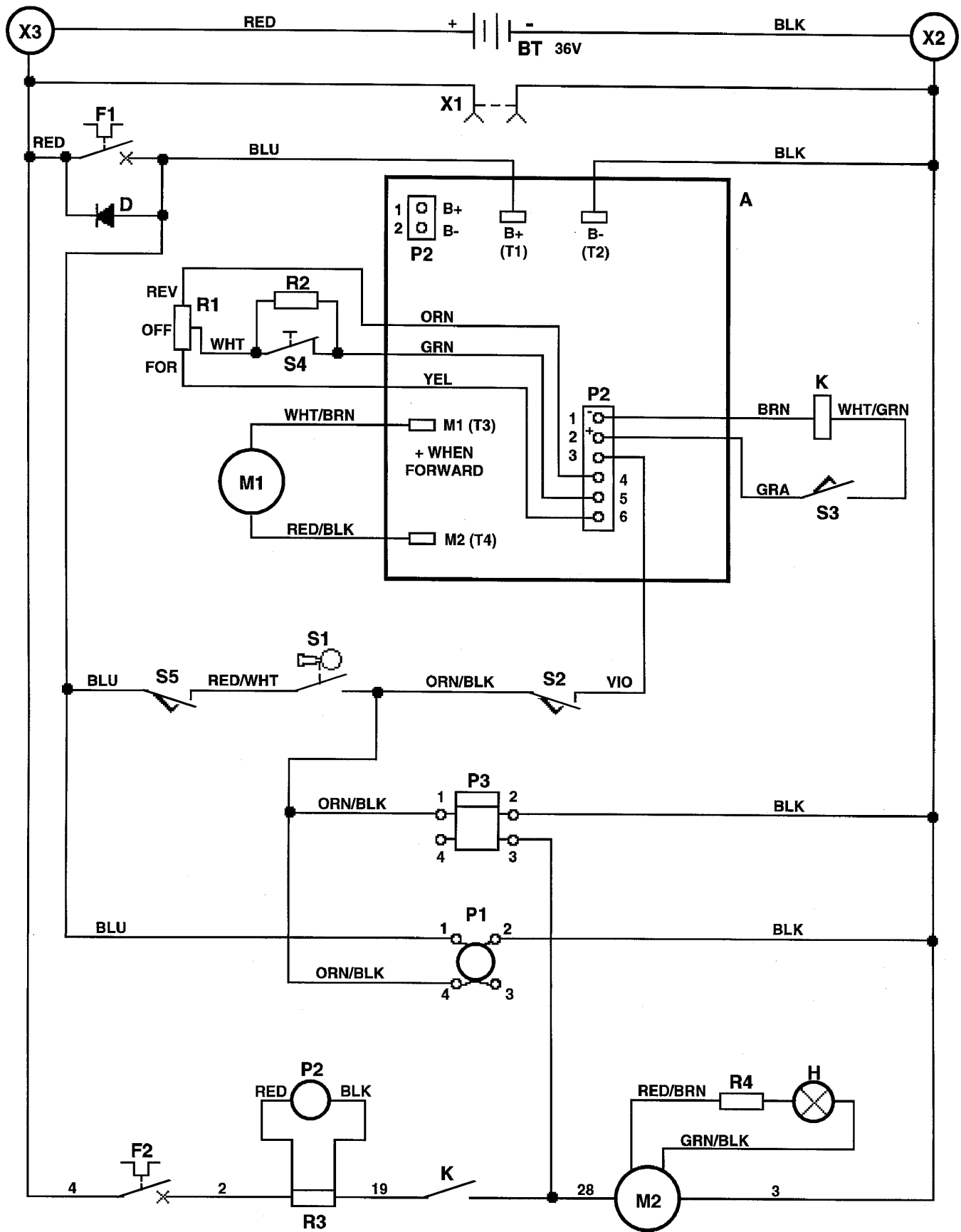
00-9



93-10	DRIVE MOTOR		
01-5	Whirlamatic™ VS 20		11

Item	Ref. No.	Qty	Description
1	56443719	2	Key
2	56393602	2	Wheel
3	56367192	2	Spacer
4	56002956	6	5/16-18 x 3/4 Bolt
5	56393601	2	Bearing
6	56002701	6	5/16-18 Nyloc Nut
7	56367095	1	Collar
8	56393603	1	Differential
9	56467368	1	Sprocket
10	56393616	1	Guard
11	56002513	2	1/4-20 x 1/2 Bolt
12	56030080	1	Decal, Hands Clear
13	56393738	1	Roller Chain
14	56003073	2	5/16-18 x 1 Bolt
15	56152781	2	Washer
16	56467149	1	Drive Motor
*	56503006	1	Carbon Brush/Set 2
17	56465456	1	Sprocket

* = Not Shown



Item	Part No.	Qty	Description
A	56393721	1	Speed Control
BT			Battery
D	56377525	1	Diode
F1	56454538	1	Circuit Breaker 15 Amp
F2	56393722	1	Circuit Breaker 70 Amp
H	56389433	1	Red Indicator Light, 24V (before February 1998)
	56393863	1	Red Indicator Light, 36V (after January 1998)
K	56395450	1	Brush Motor Solenoid
M1	56467149	1	Wheel Drive Motor
*	56503006	1	Carbon Brush/Set 2
M2	56389422	1	Brush Motor
P1	56393717	1	Battery Fuel Gauge
P2	56389527	1	Ammeter
P3	56393718	1	Hour Meter (optional)
R1	56454740	1	Potentiometer 5K Ohm
R2	56393734	1	Resistor 5.6K .25W
R3	56386793	1	Shunt
R4	56389453	1	Resistor 330 Ohm .5W (before February 1998)
S1	56301636	1	Main Switch
S2	56393569	1	Tip Interlock Switch
S3	56324362	1	Brush Motor Switch
S4	56393312	1	Speed Limit Switch
S5	56462362	1	Charger Interlock Switch
X1	56393741	1	Battery Charger Connector
X2		1	Negative Terminal Stud
X3		1	Wheel Motor Disconnect
#4	56393742	1	Cable Assembly #6 AWG x 9.00"
#2	56393572	1	Cable Assembly #4 AWG x 10.00"
#3	56393573	1	Cable Assembly #4 AWG x 29.00"
#19	56389223	1	Cable Assembly #6 AWG x 9.00"
#28	56389313	1	Cable Assembly #6 AWG x 29.00"
*	56393729	1	Wiring Harness (before February 1998)
	56393864	1	Wiring Harness (after January 1998)

* = Not Shown



Nilfisk-Advance, Inc.
14600 21st Avenue North
Plymouth, MN, 55447-3408
www.nilfisk-advance.com
Phone: 800-989-2235
Fax: 800-989-6566
©2001 Nilfisk-Advance, Inc.,
Plymouth, MN 55447-3408
Printed in the U.S.A.