



Electronic Service Manuals

This electronic document is provided as a service to our customers. We do not create the contents of the information contained in this document. Should you have detailed questions pertaining to the information contained in this document, you may contact Michco, or the manufacturer which provided the original information in this electronic deliverable. Michco's only part in this electronic deliverable was the electronic assembly process.

You may contact Michco through the following methods:
Phone (517) 484-9312 or (800) 331-3339 MI, OH, IN only
2011 N. High St. -- Lansing, Michigan -- 48906
Fax: (517) 484-9836
Email: CustServ@Michco.com
Web site: www.Michco.Com
Parts Web site: www.FloorMachineParts.Com

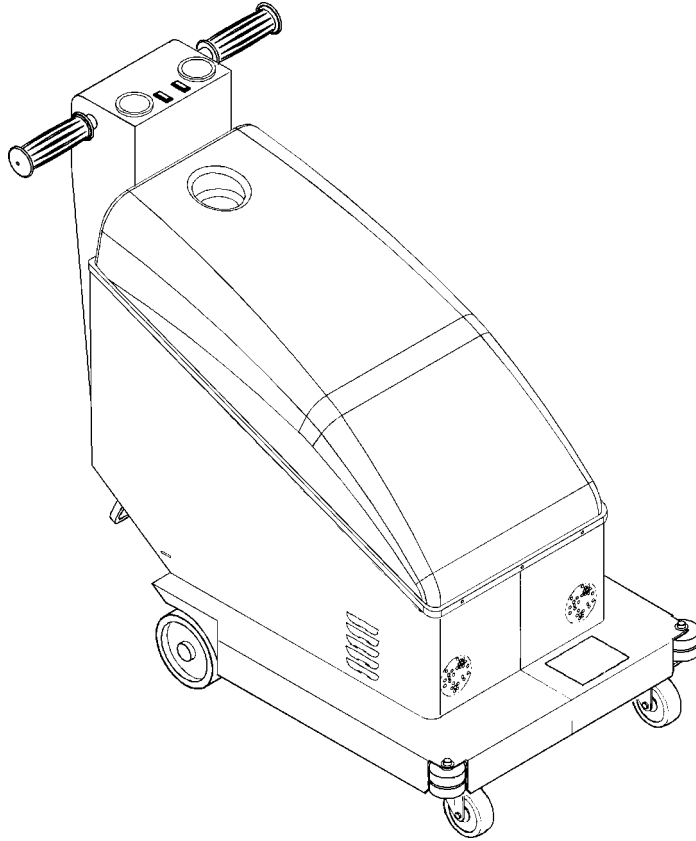
Order Parts on Line at:
www.FloorMachineParts.Com

Directly to Parts & Service:
By Email: **Shop@Michco.com**
By Fax: (517) 702-2041
By Voice: Use numbers above.

Serving the Cleaning Industry Since 1922

Notice: All copyrighted material remains property of original owners, all trademarks are property of respective owners. Manuals are subject to Manufacturer's reproduction limitations. Originals or reproductions were provided by manufacturers through a request. We make no warranty as to the correctness of information provided in this document and you assume all risk.

Whirlamatic™ UHSB 17



PARTS LIST

Advance MODEL 56393800



Advance

by Nilfisk-Advance

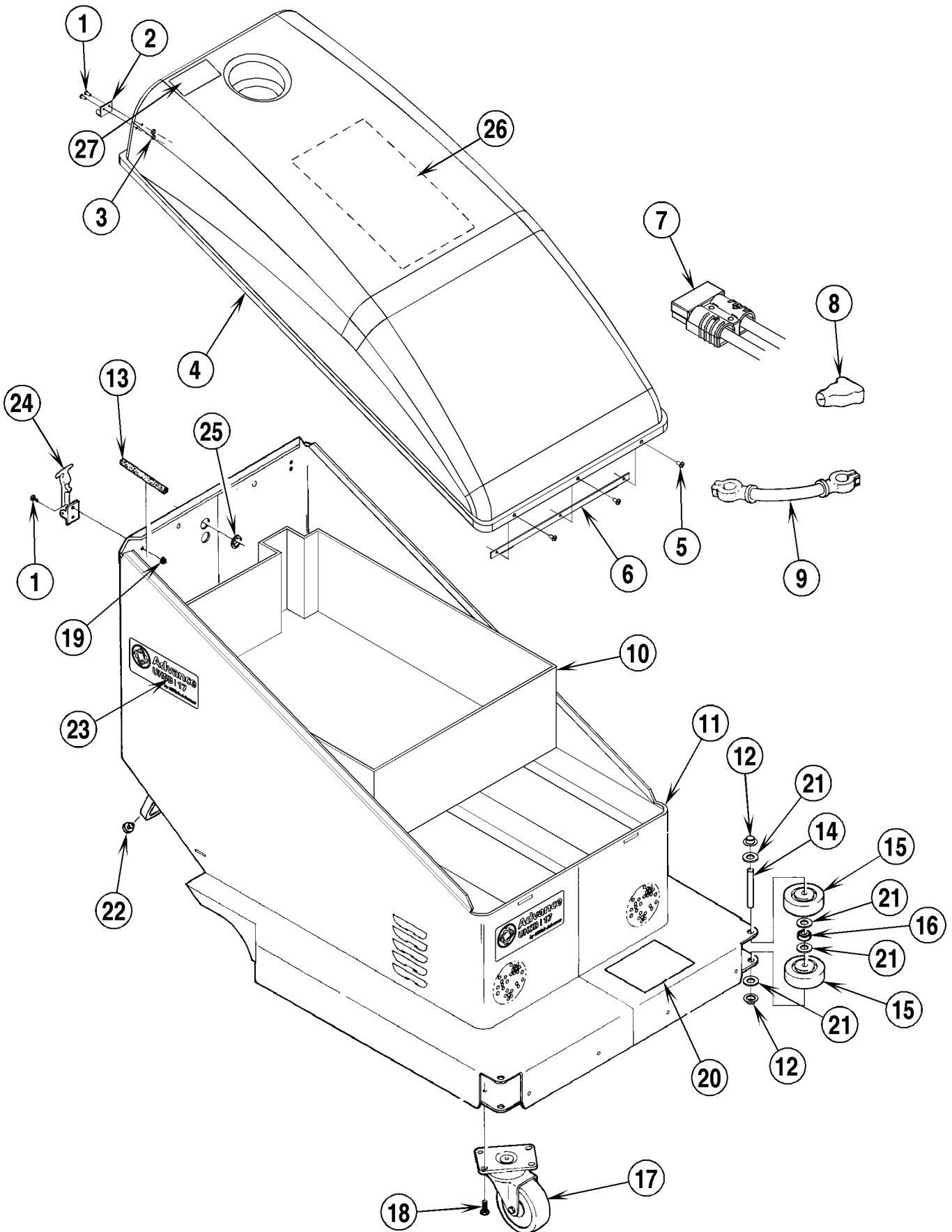
3/97 revised 12/01 FORM NO. 56042327

| DESCRIPTION | PAGE |
|--------------------------|-------------|
| CHASSIS AND SHROUD | 4-5 |
| HANDLE ASSEMBLY | 6-7 |
| PAD DRIVE ASSEMBLY | 8-9 |
| WIRING DIAGRAM | 10-11 |

WHEN ORDERING PARTS

- * Use the 8 digit numbers from the "Ref. No." columns in this parts list.
- * Specify the model and serial number of the machine.
- * Use the space below to record the model and serial number for future reference.

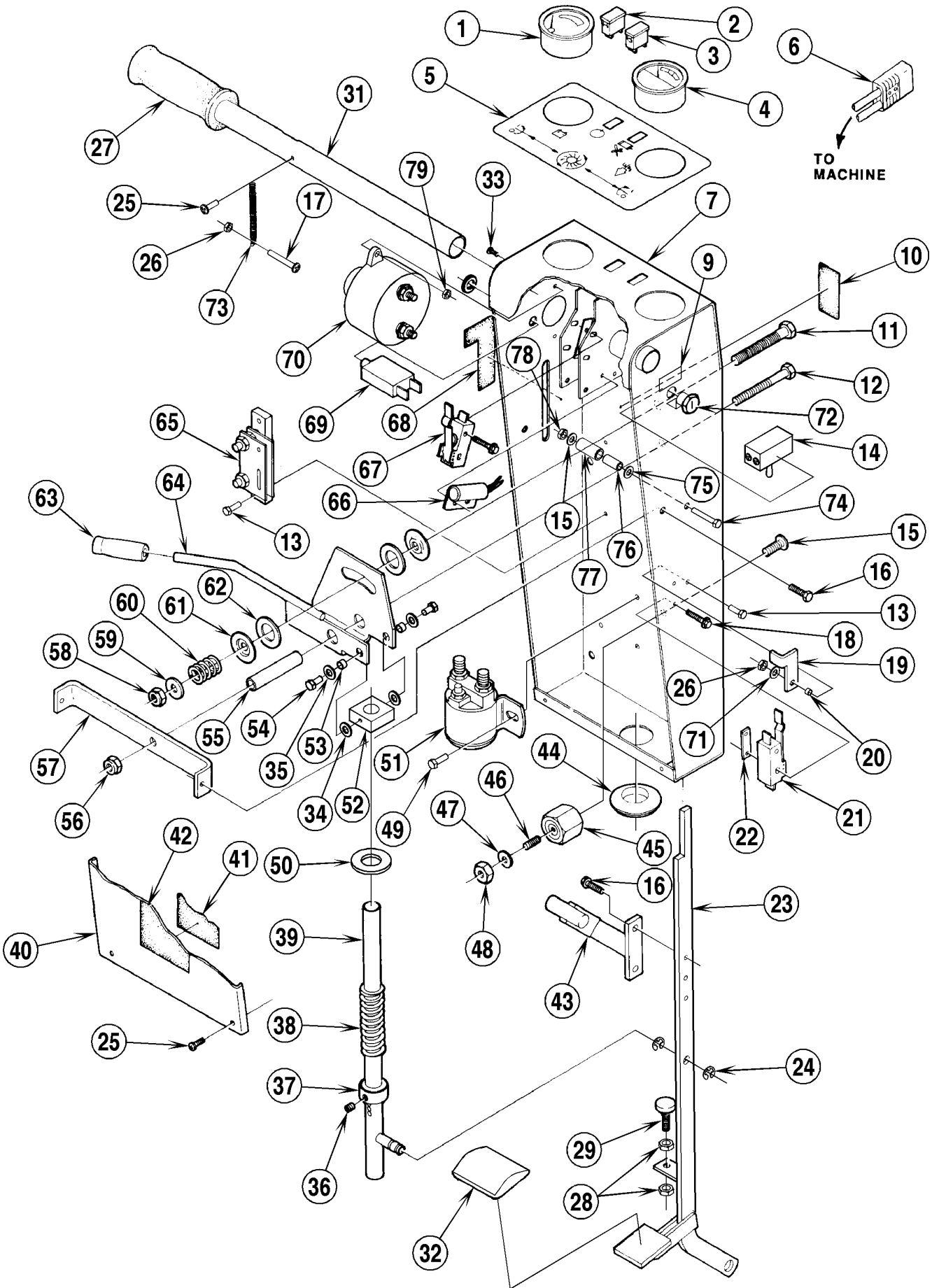
Model _____ Serial No. _____



| | | | |
|------|-----------------------------|--|----------|
| 97-3 | CHASSIS AND SHROUD | | |
| 01-9 | Whirlamatic™ UHSB 17 | | 5 |

| Item | Ref. No. | Qty | Description |
|------|----------|-----|-------------------------------------|
| | 56393852 | 1 | Shroud Assembly (#1-6) |
| 1 | 56001904 | 8 | Scr, Pan Phil #6-32 x .38 |
| 2 | 56393559 | 2 | Keeper |
| 3 | 56002864 | 8 | Nut, Hex Nyl Loc-Thin #6-32 |
| 4 | 56393853 | 1 | Shroud |
| 5 | 56009030 | 3 | Scr, Pan Phil Thd Form #10-24 x .38 |
| 6 | 56393539 | 1 | Bracket |
| 7 | 56391127 | 1 | Connector with Wires |
| 8 | 56372673 | 6 | Battery Boot |
| 9 | 56363936 | 2 | Cable TSB 730 |
| 10 | 56393818 | 1 | Battery Tray |
| 11 | 56393806 | 1 | Chassis |
| 12 | 56009123 | 4 | Nut, Push Cap 3/8 |
| 13 | 56393549 | 2 | Trim |
| 14 | 56393543 | 2 | Pin |
| 15 | 56363855 | 4 | Wheel |
| 16 | 56328022 | 2 | Bushing |
| 17 | 56206725 | 2 | Caster |
| 18 | 56009033 | 6 | Scr, Hex Thd Form 1/4-20 x .50 |
| 19 | 56002830 | 4 | Nut, Hex Nyl Loc #6-32 |
| 20 | 56015120 | 1 | Decal, Pad Replacement |
| 21 | 56009045 | 8 | Wsh, Bowed |
| 22 | 56393581 | 2 | Bumper |
| 23 | 56016417 | 1 | Decal, UHSB 17 |
| 24 | 56393560 | 2 | Latch |
| 25 | 56157376 | 2 | Grommet |
| 26 | 56015584 | 1 | Decal, Maintenance |
| 27 | 56015171 | 1 | Decal, Important |
| * | 56324284 | 1 | Battery Cable TSB 730 |
| * | 56386973 | 1 | Battery Cable TSB 730 |

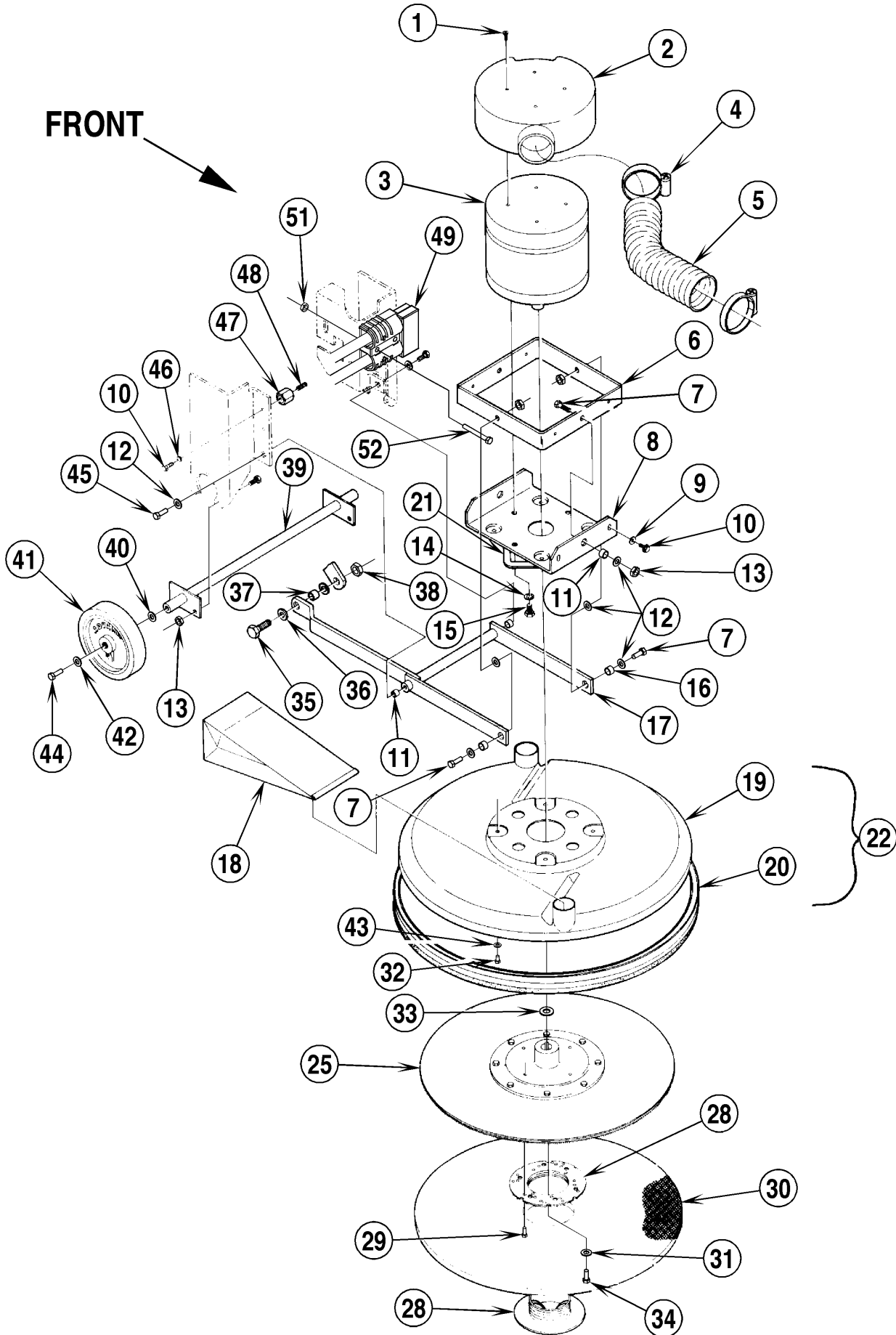
* = Not Shown



| | | | | |
|-------|-----------------------------|--|--|----------|
| 97-3 | HANDLE ASSEMBLY | | | |
| 01-12 | Whirlamatic™ UHSB 17 | | | 7 |

| Item | Ref. No. | Qty | Description | Item | Ref. No. | Qty | Description |
|------|----------|-----|--|------|----------|-----|--------------------------------|
| | 56393851 | 1 | Handle Assembly | 41 | 56016067 | 1 | Decal, Wiring |
| 1 | 56448677 | 1 | Battery Meter | 42 | 56014601 | 1 | Decal, Caution |
| 2 | 56389434 | 1 | Green Indicator Light (before February 1998) | 43 | 56393854 | 1 | Handle |
| | 56392858 | 1 | Green Indicator Light (after January 1998) | 44 | 56344621 | 1 | Grommet |
| 3 | 56389433 | 1 | Red Indicator Light (before February 1998) | 45 | 56469858 | 2 | Insulated Stand-Off |
| | 56393863 | 1 | Red Indicator Light (after January 1998) | 46 | 56009020 | 2 | Stud 1/4-20 x .88 |
| 4 | 56389527 | 1 | Amp Meter TSB 672 | 47 | 56009064 | 2 | Wsh, Int Shprf 1/4 |
| 5 | 56015916 | 1 | Decal, Control Handle | 48 | 56009087 | 1 | Nut, Hex Jam 1/4-20 |
| 6 | 56393568 | 1 | Connector with Wires | 49 | 56009019 | 2 | Scr, Hex Thd Form 1/4-20 x .38 |
| 7 | 56393725 | 1 | Handle Weld't. | 51 | 56393450 | 1 | Contactora 36V |
| 9 | 56015422 | 1 | Decal, Switch | 50 | 56200115 | 1 | Wsh, Flt |
| 10 | 56016084 | 1 | Decal, Cable Routing | 52 | 56393696 | 1 | Bearing Block Assembly |
| 11 | 56002058 | 1 | Scr, Hex Hd 3/8-16 x 2.50 | 53 | 56200123 | 2 | Bushing |
| 12 | 56002606 | 1 | Scr, Hex Hd 5/16-18 x 3.50 | 54 | 56009124 | 2 | Scr, Hex Hd 10-24 x .62 |
| 13 | 56002834 | 4 | Scr, Hex Hd 10-24 x .38 | 55 | 56393520 | 1 | Pivot |
| 14 | 56301636 | 1 | Main Switch | 56 | 56002826 | 1 | Nut, Hex Nyl Loc 5/16-18 |
| 15 | 56001861 | 2 | Scr, Hex Cap 1/4-20 x .38 | 57 | 56393534 | 1 | Support |
| 16 | 56009033 | 4 | Scr, Hex Thd Form 1/4-20 x .50 | 58 | 56002769 | 1 | Nut, Hex Nyl Loc 3/8-16 |
| 17 | 56002231 | 1 | Scr, Pan Phil 10-24 x 1.50 | 59 | 56002063 | 1 | Wsh, Flt SAE 3/8 |
| 18 | 56002809 | 4 | Scr, Hex Hd Loc 6-32 x .88 | 60 | 56171177 | 1 | Spring |
| 19 | 56393530 | 1 | Lever | 61 | 56440760 | 2 | Washer |
| 20 | 56375334 | 1 | Bushing | 62 | 56367184 | 2 | Thrust Bearing |
| 21 | 56388019 | 1 | Pad Up Switch | 63 | 56471193 | 1 | Grip |
| 22 | 56376015 | 2 | Nut Plate | 64 | 56393528 | 1 | Lever TSB 672 |
| 23 | 56393821 | 1 | Pedal | 65 | 56386793 | 1 | Shunt |
| 24 | 56003262 | 2 | Retaining Ring | 66 | 56393569 | 1 | Mercury Switch |
| 25 | 56009034 | 4 | Scr, Pan Phil Thd Form 8-32 x .88 | 67 | 56385615 | 1 | Switch |
| 26 | 56002832 | 4 | Nut, Hex Nyl Loc-Thin 10-24 | 68 | 56015122 | 1 | Decal, Circuit Breaker |
| 27 | 56388545 | 2 | Grip | 69 | 56387316 | 1 | Circuit Breaker |
| 28 | 56009087 | 2 | Nut, Hex Jam 1/4-20 | 70 | 56393722 | 1 | Circuit Breaker |
| 29 | 56386314 | 1 | Leveler | 71 | 56009125 | 1 | Wsh, Bowed |
| 31 | 56393654 | 1 | Tube | 72 | 56393325 | 1 | Bracket, Keylock |
| 32 | 56365002 | 1 | Pad | 73 | 56328790 | 1 | Spring |
| 33 | 56002192 | 2 | Scr, Pan Phil 10-24 x .75 | 74 | 56001833 | 1 | Scr, Hex Hd 1/4-20 x 1.50 |
| 34 | 56009142 | 2 | Wsh, Bowed | 75 | 56002098 | 3 | Wsh, Flt SAE 1/4 |
| 35 | 56001954 | 2 | Wsh, Flt SAE #10 | 76 | 56207489 | 1 | Bushing |
| 36 | 56002021 | 1 | Scr, Soc Set Loc 5/16-18 x .38 | 77 | 56244859 | 1 | Bushing |
| 37 | 56367354 | 1 | Collar | 78 | 56002840 | 1 | Nut, Hex Nyl Loc-Thin 1/4-20 |
| 38 | 56372129 | 2 | Spring | 79 | 56002832 | 1 | Nut, Hex Nyl Loc-Thin 10-24 |
| 39 | 56393857 | 1 | Rod | | | | |
| 40 | 56393816 | 1 | Panel | | | | |

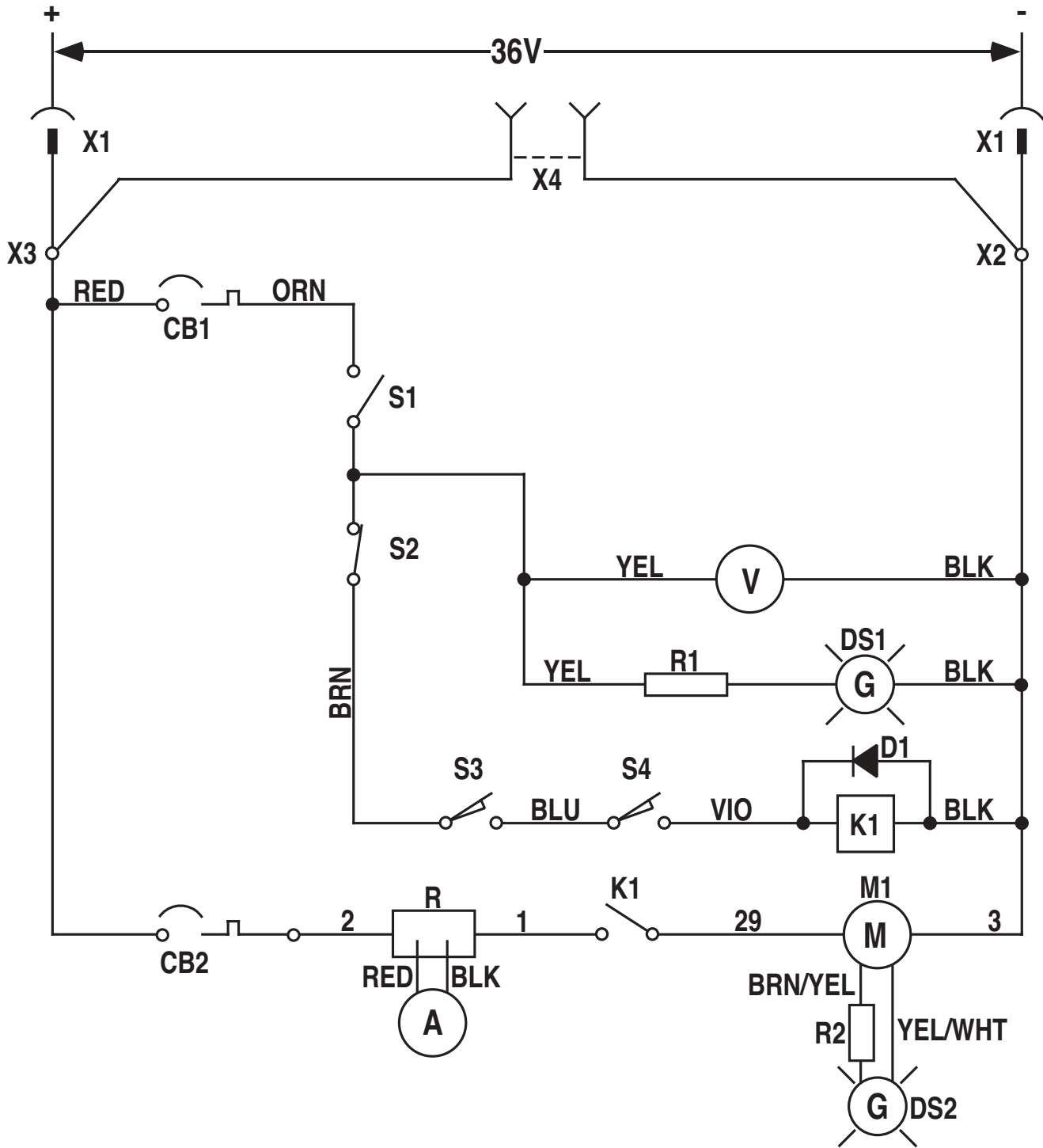
FRONT



| | | | |
|------|-----------------------------|--|----------|
| 97-3 | PAD DRIVE ASSEMBLY | | |
| 01-9 | Whirlamatic™ UHSB 17 | | 9 |

| Item | Ref. No. | Qty | Description | Item | Ref. No. | Qty | Description |
|------|----------|-----|------------------------------------|------|----------|-----|--------------------------------|
| | 56393502 | 1 | Drive Unit Assembly (#1-17) | 30 | | 1 | Pad (not included) |
| 1 | 56009127 | 4 | Scr, Flt Phil Thd Form 10-24 x .62 | 31 | 56009057 | 1 | Wsh, Flt Hrd |
| 2 | 56393576 | 1 | Cover | 32 | 56009019 | 4 | Scr, Hex Thd Form 1/4-20 x .38 |
| 3 | 56389422 | 1 | Motor TSB 672 | 33 | 56009022 | 1 | Wsh, Flt |
| * | 56389371 | 1 | Carbon Brush Set (for #3) | 34 | 56003303 | 1 | Scr, Hex Loc 5/16-24 x .75 |
| * | 56389395 | 1 | Brush Spring Set (for #3) | 35 | 56001895 | 1 | Scr, Hex Hd 1/2-13 x 1.00 |
| 4 | 56352829 | 4 | Hose Clamp | 36 | 56009017 | 2 | Wsh, Flt Hrd |
| 5 | 56387392 | 2 | Hose | 37 | 56393373 | 1 | Bushing |
| 6 | 56393542 | 1 | Frame | 38 | 56009016 | 1 | Nut, Jam 1/2-13 |
| 7 | 56001834 | 4 | Scr, Hex Hd 5/16-18 x 1.25 | 39 | 56393548 | 1 | Axle |
| 8 | 56393510 | 1 | Motor Mount | 40 | 56009021 | 2 | Wsh, Bowed |
| 9 | 56002098 | 2 | Wsh, Flt SAE 1/4 | 41 | 56391110 | 2 | Wheel |
| 10 | 56009018 | 4 | Scr, Hex Thd Form 1/4-20 x .75 | 42 | 56009122 | 2 | Wsh, Flt |
| 11 | 56391840 | 4 | Bushing | 43 | 56009002 | 4 | Wsh, Flt |
| 12 | 56001939 | 8 | Wsh, Flt SAE 5/16 | 44 | 56002929 | 2 | Scr, Hex Hd Loc 5/16-18 x .62 |
| 13 | 56002701 | 8 | Nut, Hex Nyl Loc 5/16-18 | 45 | 56002956 | 2 | Scr, Hex Hd Loc 5/16-18 x .75 |
| 14 | 56009112 | 4 | Wsh, Int Shprf 3/8 | 46 | 56009064 | 2 | Wsh, Int Shprf 1/4 |
| 15 | 56002208 | 4 | Scr, Hex Hd 3/8-16 x .50 | 47 | 56469858 | 2 | Insulated Stand-Off |
| 16 | 56244941 | 2 | Bushing | 48 | 56009020 | 2 | Stud, 1/4-20 x .88 |
| 17 | 56393462 | 1 | Linkage | 49 | 56393741 | 1 | Connector Assembly |
| 18 | 56391185 | 2 | Bag (package of 6) | 50 | | | Intentionally Omitted |
| 19 | 56393826 | 1 | Shroud | 51 | 56002708 | 2 | Nut, Hex Nyl Loc 1/4-20 |
| 20 | 56393827 | 1 | Skirt | 52 | 56001967 | 2 | Scr, Hex Hd 1/4-20 x 1.75 |
| 21 | 56200754 | 2' | Gasket (61 cm) | | | | |
| 22 | 56393825 | 1 | Dust Shroud Assembly (#19-21) | * | 56161700 | A/R | Burnishing Pads (5 pack) |
| 25 | 56393823 | 1 | Pad Holder | | | | |
| 28 | 56393567 | 1 | Retainer | | | | |
| 29 | 56002519 | 4 | Scr, Hex Hd 10-24 x .38 | | | | |

* = Not Shown



| | | | |
|-------|-----------------------------|--|-----------|
| 97-3 | WIRING DIAGRAM | | |
| 01-12 | Whirlamatic™ UHSB 17 | | 11 |

| Item | Ref. No. | Qty | Description |
|------|----------|-----|--|
| A | 56389527 | 1 | Amp Meter |
| CB1 | 56387316 | 1 | Circuit Breaker 10 Amp |
| CB2 | 56393722 | 1 | Circuit Breaker 80 Amp |
| D1 | 56389265 | 1 | Diode |
| DS1 | 56389434 | 1 | Green Indicator Light (before February 1998) |
| | 56392858 | 1 | Green Indicator Light (after January 1998) |
| DS2 | 56389433 | 1 | Red Indicator Light (before February 1998) |
| | 56393863 | 1 | Red Indicator Light (after January 1998) |
| K1 | 56393450 | 1 | Contactora |
| M1 | 56389422 | 1 | Pad Motor |
| R | 56386793 | 1 | Shunt |
| R1 | 56389453 | 1 | Resistor 330 Ohm (before February 1998) |
| R2 | 56389453 | 1 | Resistor 330 Ohm (before February 1998) |
| S1 | 56301636 | 1 | Main Switch |
| S2 | 56393569 | 1 | Mercury Switch |
| S3 | 56388019 | 1 | Pad Up Switch |
| S4 | 56385615 | 1 | Pad Motor Switch |
| V | 56448677 | 1 | Battery Meter |
| X1 | | 1 | Battery Disconnect |
| X2 | 56009020 | 1 | Stud, 1/4-20 x .88 |
| X3 | 56009020 | 1 | Stud, 1/4-20 x .88 |
| X4 | 56393741 | 1 | Connector Assembly |
| | 56393776 | 1 | Wiring Harness (before February 1998) |
| | 56393862 | 1 | Wiring Harness (after January 1998) |



Nilfisk-Advance, Inc.
14600 21st Avenue North
Plymouth, MN, 55447-3408
www.nilfisk-advance.com
Phone: 800-989-2235
Fax: 800-989-6566
©2000 Nilfisk-Advance, Inc.,
Plymouth, MN 55447-3408
Printed in the U.S.A.