



Electronic Service Manuals

This electronic document is provided as a service to our customers. We do not create the contents of the information contained in this document. Should you have detailed questions pertaining to the information contained in this document, you may contact Michco, or the manufacturer which provided the original information in this electronic deliverable. Michco's only part in this electronic deliverable was the electronic assembly process.

You may contact Michco through the following methods:
Phone (517) 484-9312 or (800) 331-3339 MI, OH, IN only
2011 N. High St. -- Lansing, Michigan -- 48906
Fax: (517) 484-9836
Email: CustServ@Michco.com
Web site: www.Michco.Com
Parts Web site: www.FloorMachineParts.Com

Order Parts on Line at:
www.FloorMachineParts.Com

Directly to Parts & Service:
By Email: **Shop@Michco.com**
By Fax: (517) 702-2041
By Voice: Use numbers above.

Serving the Cleaning Industry Since 1922

Notice: All copyrighted material remains property of original owners, all trademarks are property of respective owners. Manuals are subject to Manufacturer's reproduction limitations. Originals or reproductions were provided by manufacturers through a request. We make no warranty as to the correctness of information provided in this document and you assume all risk.

Whirlamatic™ UHS17



PARTS LIST

**Advance MODELS 56183100(115V)
56183105(230V/OBSOLETE)**



Advance
by Nilfisk-Advance

revised 7/02 FORM NO. 56042164

TABLE OF CONTENTS

00-3

Whirlamatic™ UHS17

1

DESCRIPTION	PAGE
HANDLE ASSEMBLY	2-3
BASE ASSEMBLY	4-5
WIRING DIAGRAMS	6-7

WHEN ORDERING PARTS

- * Use the 8 digit numbers from the "Ref. No." columns in this parts list.
- * Specify the model and serial number of the machine.
- * Use the space below to record the model and serial number for future reference.

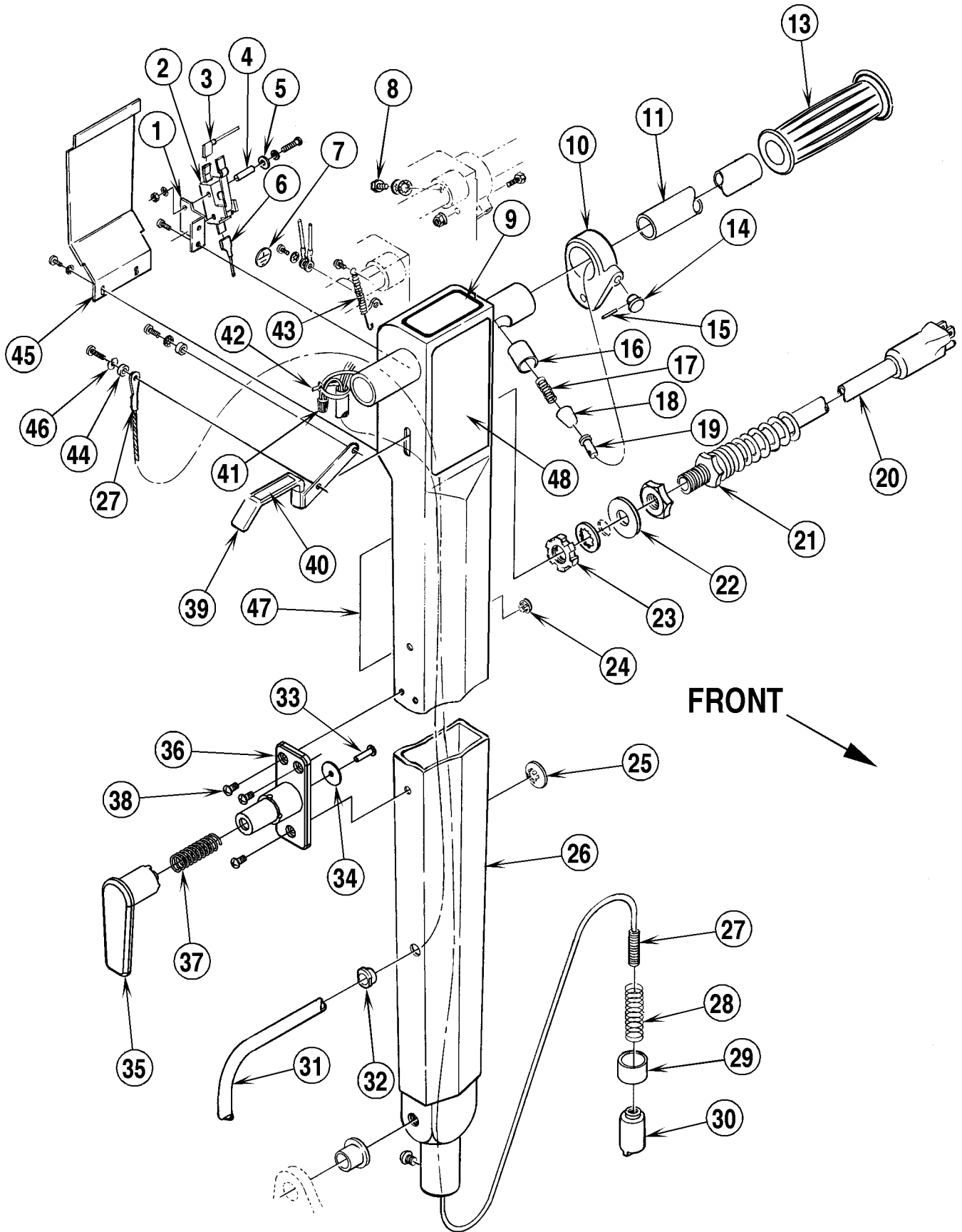
Model _____ Serial No. _____

HANDLE ASSEMBLY

2

Whirlamatic™ UHS17

00-2



HANDLE ASSEMBLY

01-2

Whirlamatic™ UHS17**3**

Item	Ref. No.	Qty	Description
1	56171209	1	Switch Bracket
2	56388019	1	Switch 115V
	56385615	1	Switch 230V
3	56321338	1	Insulator
4	56183545	2	Insulator Sleeve 230V
5	56200190	2	Fiber Washer 230V
6	56171184	1	Flag Insulator
7	56014119	1	Decal, Ground 230V
8	56234079	1	Screw
9	56014924	1	Decal, Warning
10	56172200	1	Collar
	56172215	1	Collar Assy
11	56172198	1	Handle Tube 115V
	56183527	1	Handle Tube 230V
12			Intentionally Omitted
13	56388545	2	Hand Grip 115V
	56900248	2	Hand Grip 230V
14	56201405	1	Knob
15	56003129	1	Spring Pin
16	56172201	1	Bushing
17	56201448	1	Spring
18	56172266	1	Plunger
19	56172217	1	Pin
20	56524069	1	Cord Set 115V (50 ft)
	56183141	1	Cord Set 115V (75 ft)
	56183529	1	Cord Set 230V
21	56109630	1	Strain Relief 115V
	56183525	1	Strain Relief 230V
*	56109632	1	Brass Insert
22	56171093	1	Washer
23	56171094	1	Nut 115V
	56183538	1	Nut 230V
24	56153699	4	Plug Button
25	56157244	1	Plug Button
26	56183532	1	Handle
	56183530	1	Handle Assy 115V
	56183517	1	Handle Assy 230V
27	56171099	1	Cable Assy
28	56171123	1	Spring
29	56171269	1	Bushing
30	56171132	1	Plunger
31	56183003	1	Cord Assy 115V
	56183519	1	Cord Assy 230V
32	56382817	1	Strain Relief
	56171112	1	Cord Hook Assembly (#33-37)
33	56009005	1	Scr, Pan Phil SS Type B 10-16 x .75
34	56009096	1	Wsh Flt. .193 x .875 x .060
35	56171110	1	Arm
36	56171111	1	Base
37	56380732	1	Spring
38	56009030	3	Scr, Pan Phil Thd Form 10-24 x .38
39	56017126	1	Lever
40	56014856	1	Decal
41	56321737	1	Wire Nut
42	56478246	1	Cable Tie
43	56445177	1	Spring
44	56151092	2	Spacer
45	56172262	1	Cover
46	56009125	1	Washer
47	56014828	1	Decal, Warning
48	56016439	1	Decal, Logo
*	56183523	1	Terminal Block 230V

* = Not Shown

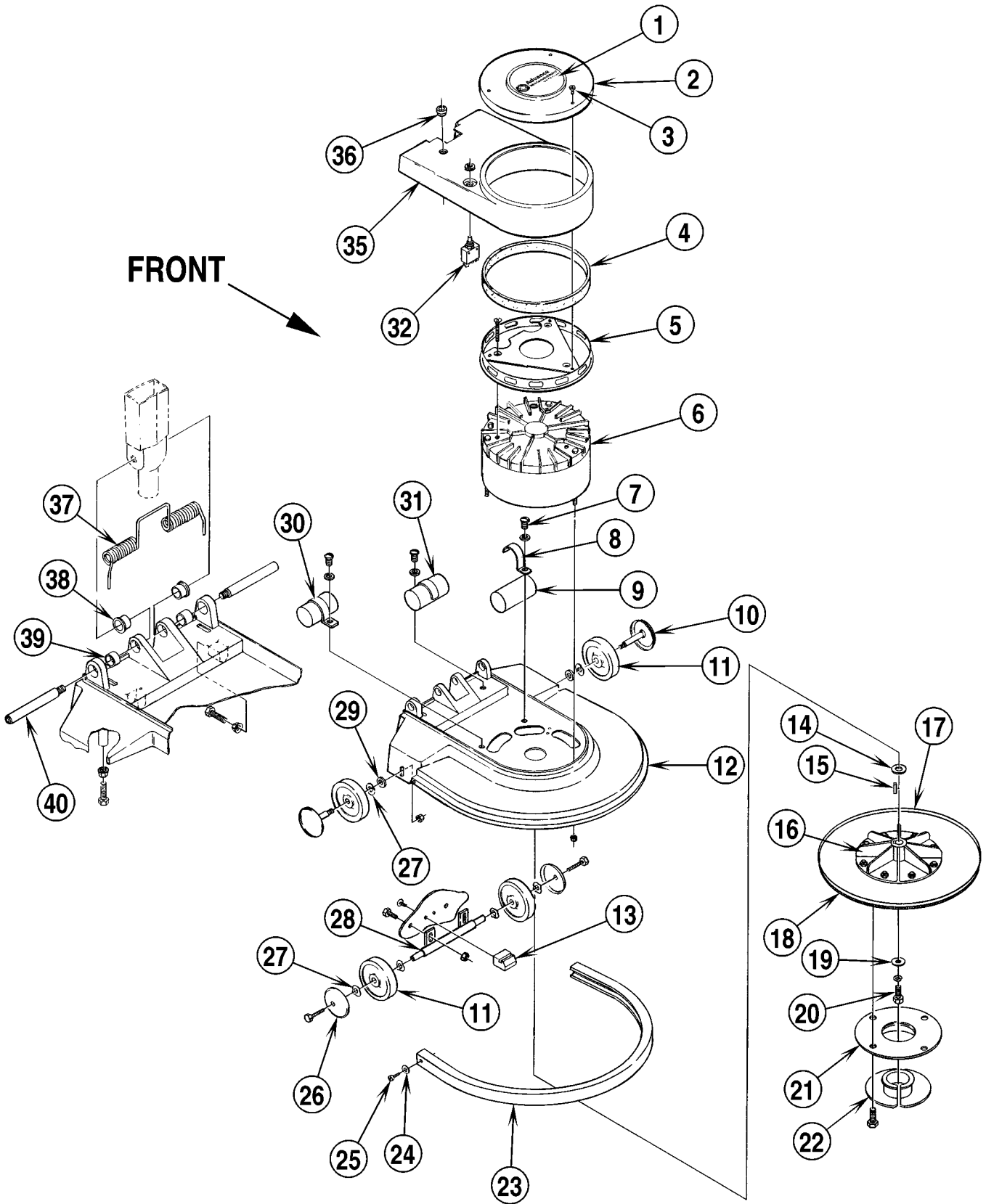
FORM NO. 56042164

BASE ASSEMBLY

4

Whirlamatic™ UHS17

02-7



BASE ASSEMBLY

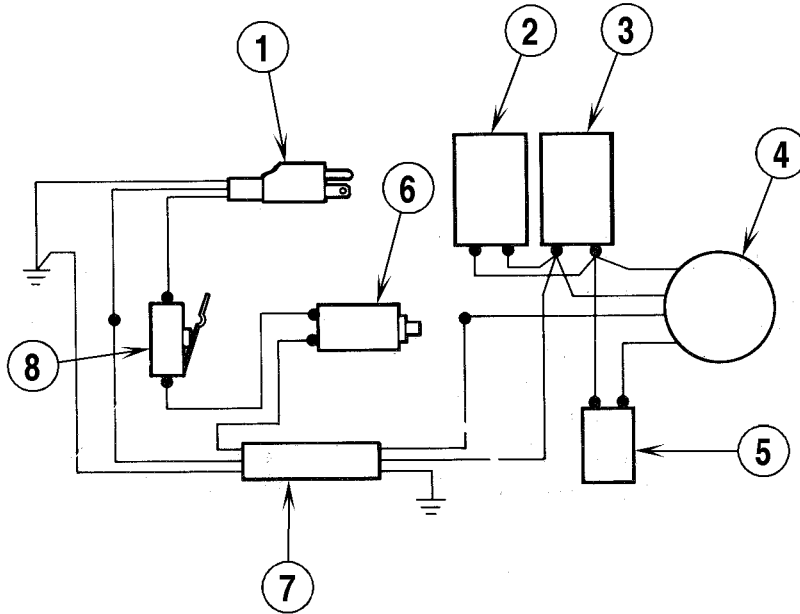
00-3

Whirlamatic™ UHS17**5**

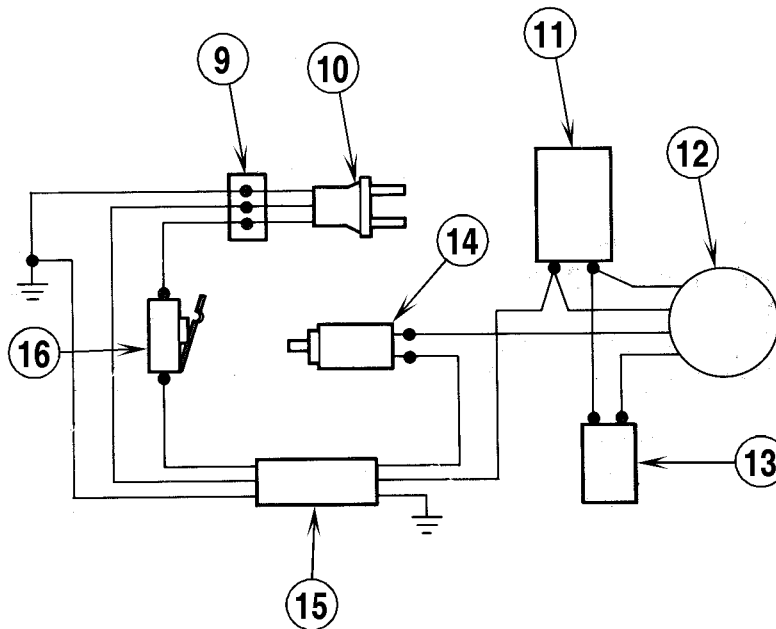
Item	Ref. No.	Qty	Description
1	56016496	1	Decal, Whirlamatic 17 UHS
2	56185438	1	Cover Shroud
3	56372929	3	Screw
4	56180032	1	Filter
5	56180008	1	Motor Bracket 115V
	56185430	1	Motor Bracket 230V
6	56185022	1	Motor 115V TSB 549, G-9 / TSB 631, G-1
	56185027	1	Motor 230V TSB617, G-5
7		3	#10-24 x 3/8 Screw
8	56185434	1	Clamp
9	56260070	1	Capacitor 115V 20 MFD
	56185427	1	Capacitor 230V 108-130 MFD
10	56183546	2	Axle TSB 404, G-12
11	56228102	4	Wheel, old style (3/8 I.D. x 4.00 O.D.) TSB 404, G-12
	56183552	4	Wheel, new style (7/16 I.D. x 4.00 O.D.) TSB 404, G-12
12	56183012	1	Skirt Housing
13	56183518	1	Handle Catch
14	56367192	1	Washer
15	56158135	1	Key
16	56388261	1	Hub
	56388524	1	Plate
17	56388525	1	Pad Holder Assembly
18	56388535	1	Bristle Pad
19	56180200	1	Washer
20	56180196	1	Screw
21	56182056	1	Base Plate
22	56182058	1	Retaining Ring
23	56183022	1	Bumper 115V
	56183544	1	Bumper 230V
24	56180092	2	Washer
25	56180087	2	Screw
26	56183548	2	Wheel Cover
27	56163767	6	Spring Washer
28	56183528	1	Axle TSB 404, G-12
29	56152781	2	Washer
30	56168440	1	Capacitor 115V 60 MFD
31	56185418	1	Capacitor 230V 30 MFD
	56180030	1	Clamp
32	56454538	1	Circuit Breaker 115V
	56387316	1	Circuit Breaker 230V
33			Intentionally Omitted
34			Intentionally Omitted
35	56183001	1	Motor Shroud TSB 549, G-9(115V) / TSB617, G-5 (230V)
36	56185504	1	Strain Relief
37	56183021	1	Torsion Spring 115V
	56183521	1	Torsion Spring 230V
38	56171095	2	Flange Bearing
39	56367168	2	Sleeve Bearing
40	56183522	2	Pivot Pin
*	56388750	1	Burnishing Brush

* = Not Shown

115V



230V



WIRING DIAGRAMS

00-3

Whirlamatic™ UHS17**7**

Item	Ref. No.	Qty	Description
			115V WIRING DIAGRAM
	56015503	1	Decal, Wiring 115V
1	56524069	1	Cord Set 115V
2	56260070	1	Capacitor
3	56168440	1	Capacitor
4	56185022	1	Motor
5	56185446	1	Capacitor
6	56454538	1	Circuit Breaker
7	56183003	1	Cord Assy.
8	56388019	1	Switch
			230V WIRING DIAGRAM
	56015505	1	Decal, Wiring 230V
9	56183523	1	Terminal Block
10	56183529	1	Cord Set
11	56185418	1	Capacitor
12	56185027	1	Motor
13	56185427	1	Capacitor
14	56183519	1	Cord Assy.
15	56387316	1	Circuit Breaker
16	56385615	1	Switch



Nilfisk-Advance, Inc.
14600 21st Avenue North
Plymouth, MN, 55447-3408
www.nilfisk-advance.com
Phone: 800-989-2235
Fax: 800-989-6566
©2000 Nilfisk-Advance, Inc.,
Plymouth, MN 55447-3408
Printed in the U.S.A.