



Electronic Service Manuals

This electronic document is provided as a service to our customers. We do not create the contents of the information contained in this document. Should you have detailed questions pertaining to the information contained in this document, you may contact Michco, or the manufacturer which provided the original information in this electronic deliverable. Michco's only part in this electronic deliverable was the electronic assembly process.

You may contact Michco through the following methods:
Phone (517) 484-9312 or (800) 331-3339 MI, OH, IN only
2011 N. High St. -- Lansing, Michigan -- 48906
Fax: (517) 484-9836
Email: CustServ@Michco.com
Web site: www.Michco.Com
Parts Web site: www.FloorMachineParts.Com

Order Parts on Line at:
www.FloorMachineParts.Com

Directly to Parts & Service:
By Email: **Shop@Michco.com**
By Fax: (517) 702-2041
By Voice: Use numbers above.

Serving the Cleaning Industry Since 1922

Notice: All copyrighted material remains property of original owners, all trademarks are property of respective owners. Manuals are subject to Manufacturer's reproduction limitations. Originals or reproductions were provided by manufacturers through a request. We make no warranty as to the correctness of information provided in this document and you assume all risk.

WHIRLAMATIC

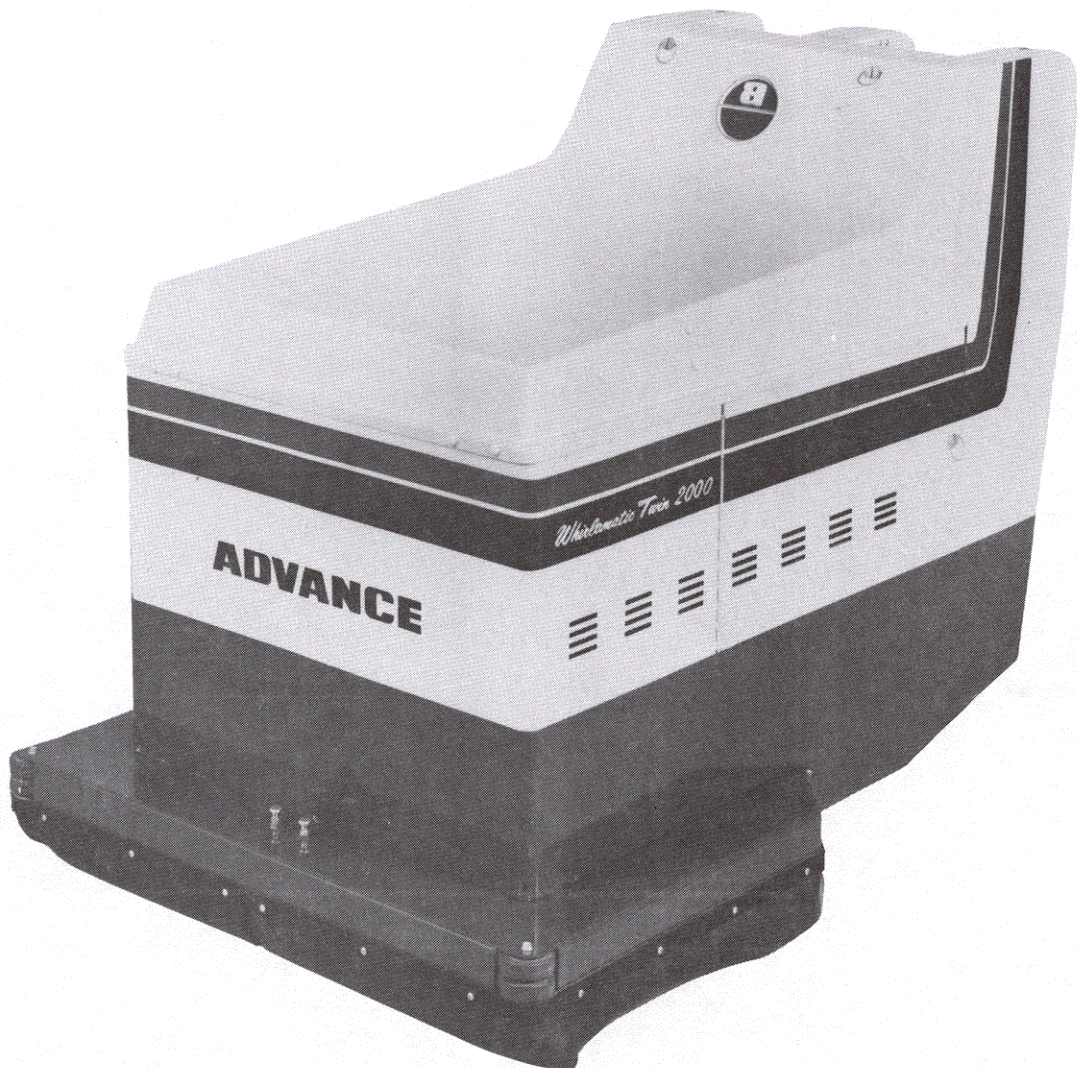
MODEL TWIN 2000

FORM NO. 042 095

SERIAL NO. 995 133

OCTOBER, 1983

PARTS LIST



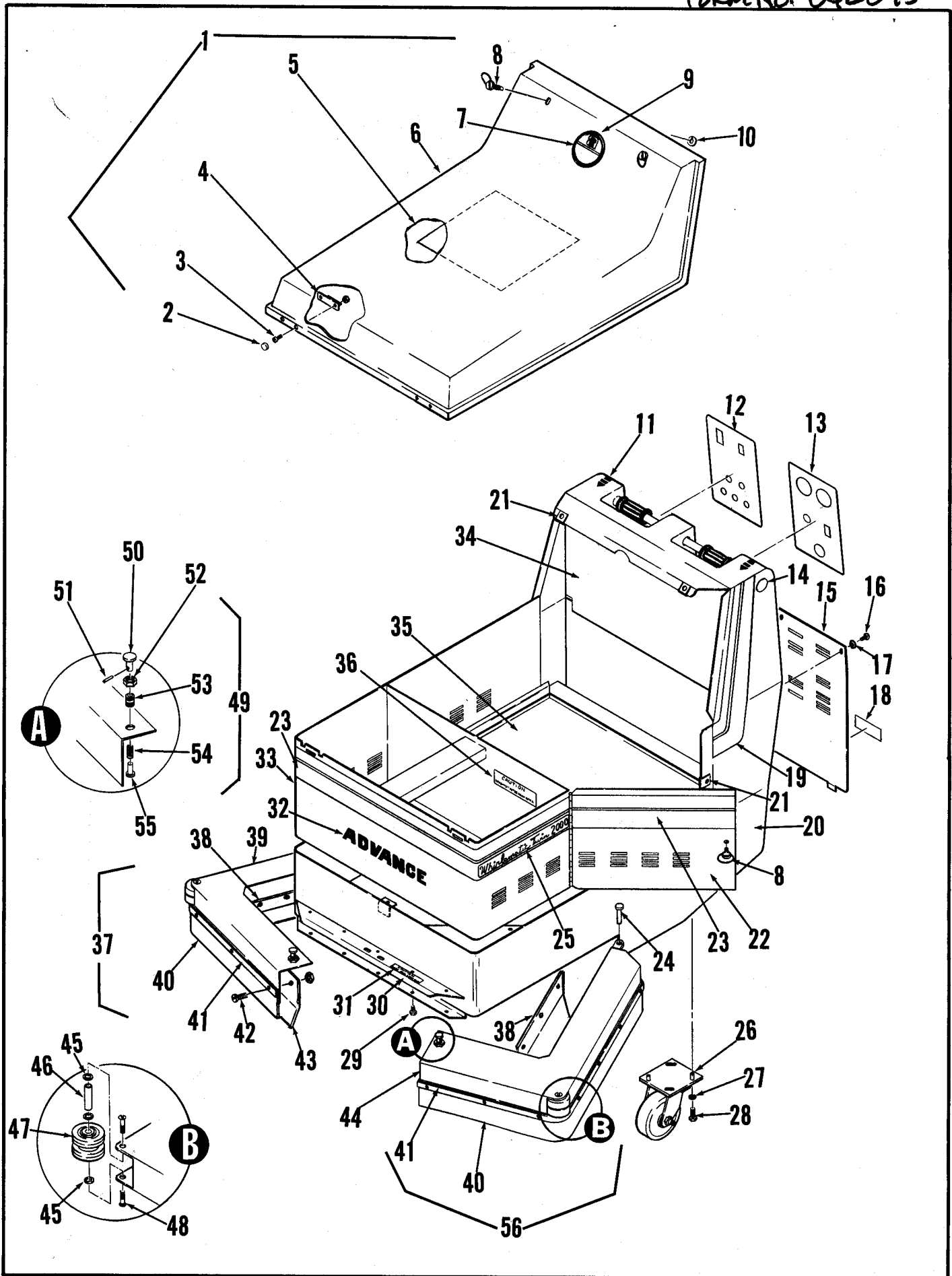
ADVANCE
MACHINE COMPANY

INTERNATIONAL HEADQUARTERS, Spring Park, Minnesota 55384 USA
EUROPE, 4 Rue Jean Engling, L - 1466 Luxembourg
CANADA, 1295 Crestlawn Drive, Mississauga, Ontario L4W 1A9



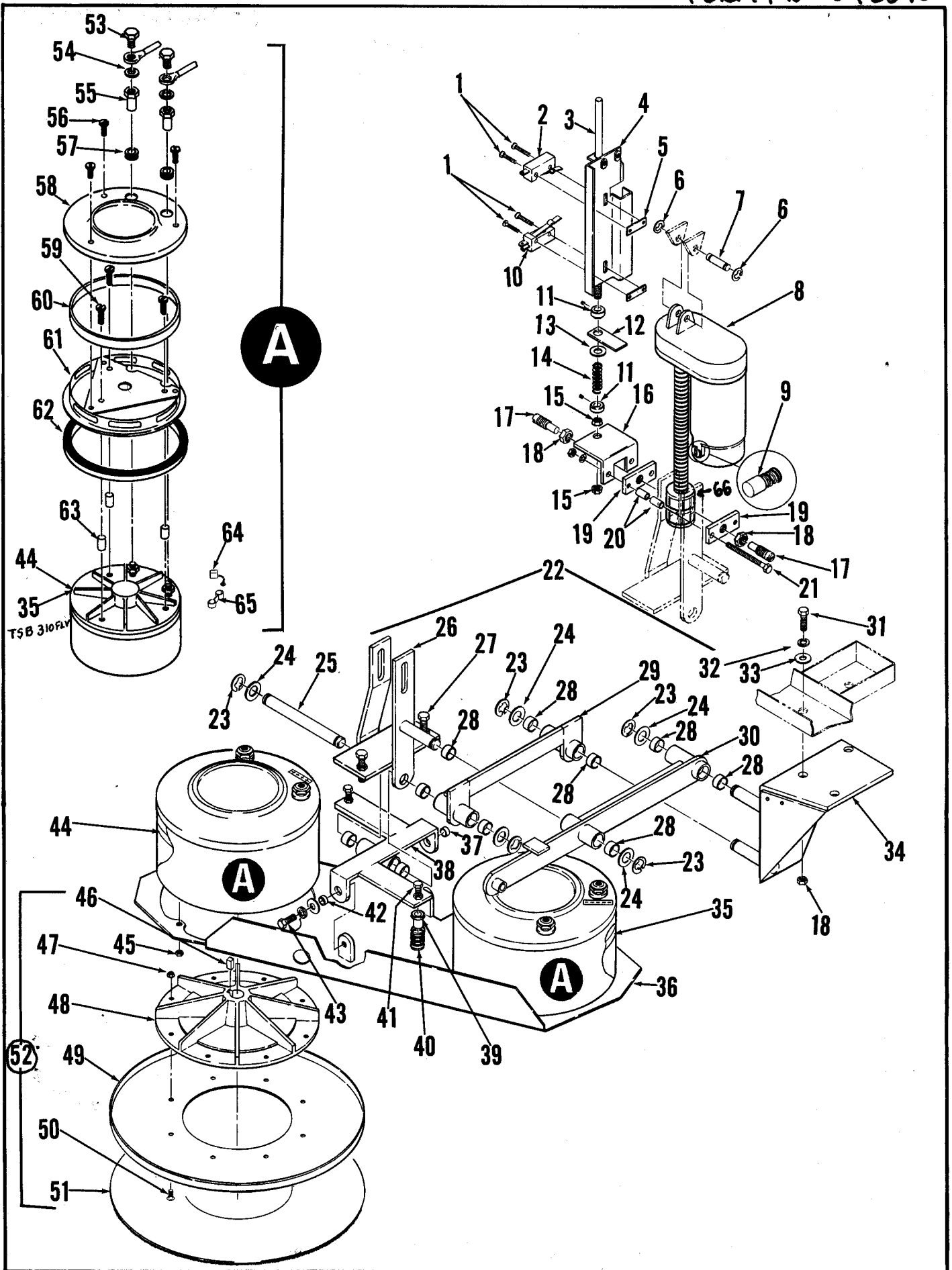
Index for Form Number 042095

Description	Location	page
Casters, Shroud & Chassis	E2	1
Controls & Electrical Panel	E8	7
Pad Drive & Lift	E4	3
Wheel Drive	E6	5
Wiring Diagram	E10	9



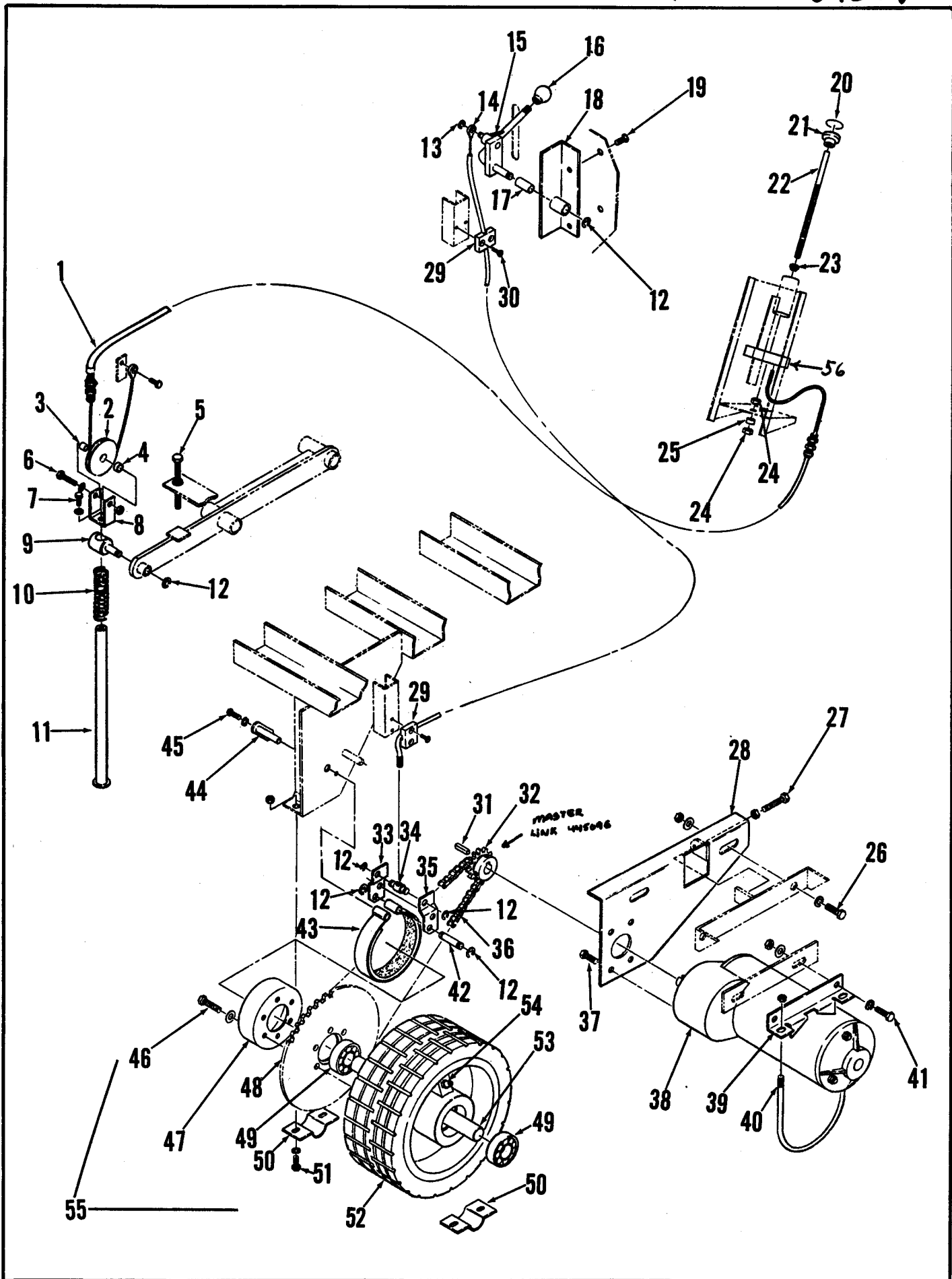
HOUSING ASSEMBLY

ITEM	PART NO	QTY	DESCRIPTION
1	388 527	1	SHROUD ASSEMBLY C/O
2	387 190	8	SNAP CAPS
3		8	SCREW, PAN HD. #10-24 x 3/8 w/HEX NUT
4	389 084	2	BRACKET
5	025 280	1	DECAL, ELECTRICAL
6	388 529	1	SHROUD
7	025 166	1	DECAL "ADVANCE"
8	448 104	3	FASTENER, SCREW
9	016 398	1	EMBLEM "ADVANCE"
10	448 108	2	WASHER, RETAINING
11	025 286	2	DECAL, "ARROW"
12	025 283	1	DECAL, CONTROL PANEL
13	025 284	1	DECAL, CONTROL PANEL
14	388 608	2	BUTTON, PLUG
15	388 539	1	COVER, BACK
16		6	SCREW, OVAL HD. #10-24 x 3/8 HP-5
17	449 340	6	WASHER, FINISHING
18	015 324	1	NAMEPLATE
19	025 281	1	DECAL, STRIPE - LEFT
	025 282	1	DECAL, STRIPE - RIGHT
20	388 950	1	CHASSIS, MAIN
21	468 960	3	RECEPTACLE, SCREW
22	389 090	1	DOOR, SIDE
23	025 135	2	DECAL, STRIPE
24	360 147	2	PIN, HINGE
25	025 285	2	DECAL, "WHIRLAMATIC 2000"
26	470 582	2	CASTER, SWIVEL
27		8	WASHER, LOCK 1/4
28		8	SCREW, HEX HD. 1/4 - 20 x 3/4
29		5	SCREW, HEX HD. 1/4 - 20 x 1/2
30	389 139	1	BRACKET, LOCK PIN
31	016 106	1	DECAL, "CAUTION"
32	016 543	1	DECAL, "ADVANCE"
33	389 064	1	HOUSING, BATTERY
34	388 541	1	SHIELD
35	389 110	1	TRAY, BATTERY
37	389 120	1	SKIRT ASSEMBLY - RIGHT
38	389 145	2	PLATE, SIDE
39	389 123		SKIRT, RIGHT
	389 125	1	SKIRT, LEFT
40	389 143	2	BLADE
41	389 141	2	STRAP
42		16	SCREW, PAN HD. #10-24 x 3/4 w/WHIZ NUT
43	389 147	1	PLATE, FRONT
44	389 125	1	SKIRT, LEFT
45	371 009	4	WASHER
46	386 823	2	BUSHING
47	363 855	4	WHEEL, BUMPER 2.50 x .812
48		4	SCREW, RD. HD. 1/4 - 20 x 1/2
49	365 548	2	LOCK PIN ASSEMBLY
50	201 405	2	KNOB
51	201 472	2	PIN
52	201 413	2	NUT, HEX
53	201 383	2	SOCKET
54	201 448	2	SPRING, COMPRESSION
55	201 391	2	PIN
56	389 121	1	SKIRT ASSEMBLY - LEFT



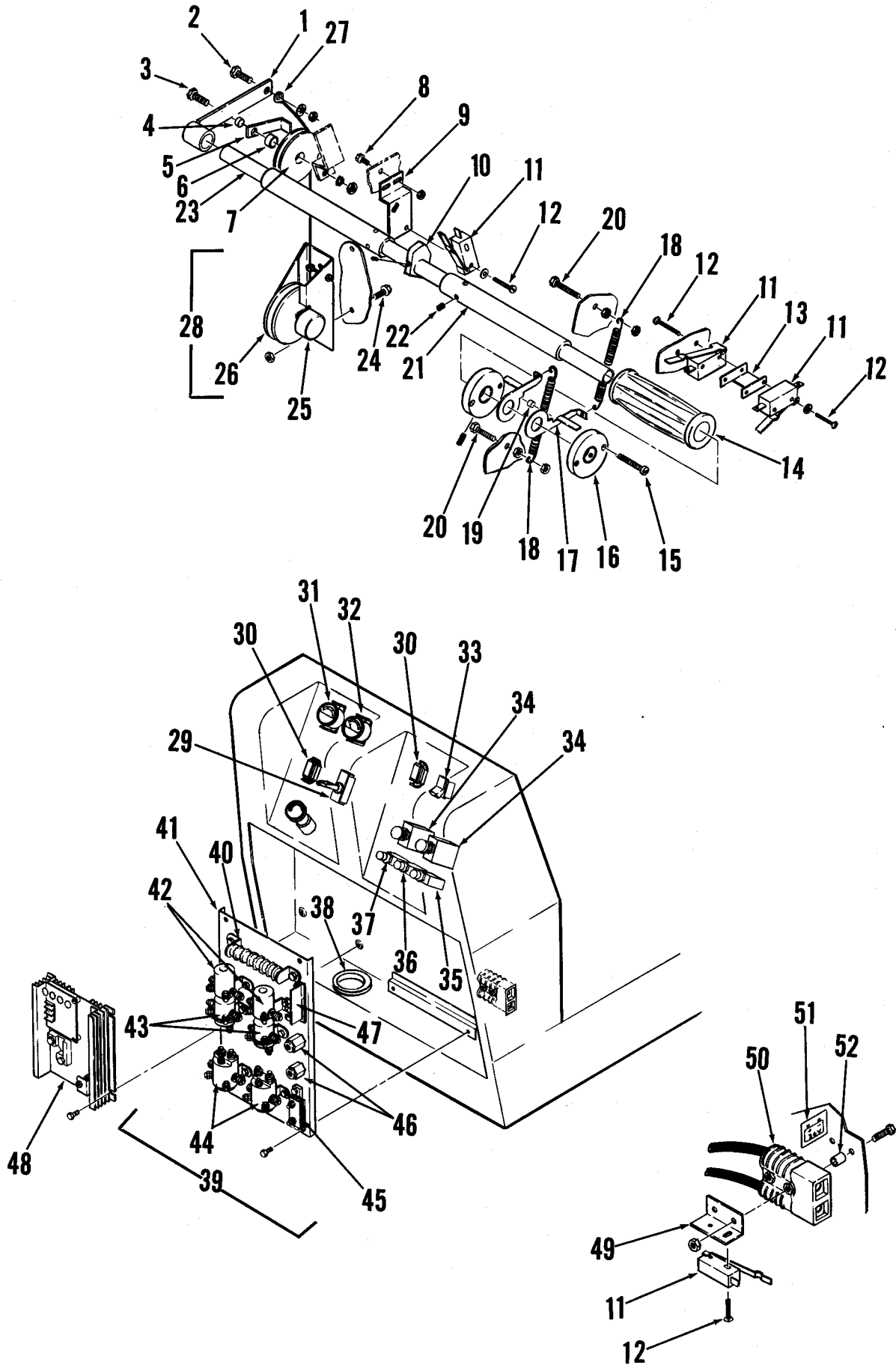
DRIVE UNIT AND RELATED PARTS

Item	Part No.	Qty	Description	Item	Part No.	Qty	Description
1		4	Screw, Pan Head #6-32 x 1	51	388522	2	Pad, Bristle - Outer
2	388019	1	Switch, Snap SPST NC	52	388525	2	Pad Holder Assy TSB 370 - G8
3	388816	1	Rod .375 x 13.25	*	505554	2	Union Mix Brush
4	388817	1	Bracket, Guide Rod	53		4	Screw, Hex Head 5/16-24 X 1/2
5	385747	2	Plate, Nut	54		4	Washer, Flat 5/16
6	321427	2	Ring, Retaining	55	386988	4	Stand-Off
7	388672	1	Pin, Pivot	56		6	Screw, Pan Head #10-24 x 1/2
8	388518	1	Motor, Gear Lift TSB 540 - G3	57	760212	4	Grommet 1.000
9	388517	1	Carbon Brush kit (for 388518)	58	386691	2	Cover, Motor Bracket
*	470431	1	Carbon Brush Kit (for 391627)	59		6	Screw, Flat Head #10-24 x 1-1/4
10	388532	1	Switch, Snap SPDT	60	180032	2	Filter, Motor
11	331076	2	Collar	61	180008	2	Bracket, Motor
12	388823	1	Bar	62	206058	2	Gasket, Motor
13	372858	1	Washer	63	207489	6	Bushing .25 x .37 x .93
14	228142	1	Spring, Compression	64	386813	1	Motor Brushes TSB 332 - G11
15		1	Nut, Range 3/8-16	65	180146	4	Brush Spring
16	388822	1	Bracket	66	388520	1	Drive Nut
17	388827	2	Screw, Adjusting				
18		5	Nut, Hex 1/2-13				* = Not Shown
19	388815	2	Plate, Nut				
20	471220	4	Bushing				
21		2	Screw 1/4-20 x 2 with Lock Washer & Nut				
22	388850	1	Drive Unit Assembly				
23	478775	5	Ring, Retaining				
24	444839	5	Washer				
25	388830	1	Pin, Pivot				
26	388782	1	Bracket, Pivot				
27		2	Screw, 3/8-16 x 1-1/2 with Nut				
28	370878	10	Bearing Sleeve				
29	388770	1	Lever, Short Arm				
30	388761	1	Lever, Long Arm				
31		3	Screw, 3/8-16 x 1-1/2 with Nut				
32		3	Washer, Lock 1/2				
33		3	Washer, Flat				
34	388800		Mounting Bracket				
35	388011	1	Motor 36V Left TSB 310 - G12, TSB 356 - G10, TSB 578 - G2				
36	388740	1	Base, Motor				
37	228052	1	Bushing .31 x .50 x .28				
38	388752	1	Bracket, Adjusting				
39	388833	2	Guide, Spring				
40	171123	2	Spring				
41		2	Screw, Hex Head 5/16-18 x 2 with Jam Nut				
42	320595	1	Bushing				
43		2	Screw, Hex Head 5/16-18 x 1 with Flat Washer & Lock Washer				
44	388010	1	Motor 36V Right TSB 578 - G2				
45		6	Nut, Hex 1/4-20				
46	740168	2	Key, Square .187 x 1.00				
47		16	Nut, Whiz Flange #10-24				
48	388261	2	Hub				
49	388524	2	Plate 17"				
50		16	Screw, Flat Head 10-24 x 3/4				



BRAKE , DRIVE WHEEL , & RELATED PARTS

ITEM	PART NO	QTY	DESCRIPTION
1	388 852	1	CABLE ASSEMBLY
2	388 836	1	PULLEY
3	321 532	1	BUSHING .25 x .37 x .40
4	370 754	1	BEARING, SLEEVE .379
5		1	SCREW, HEX HD. 3/8 - 16 x 2" W/NUT
6		1	SCREW, HEX HD. 1/4 - 20 x 1 1/2 W/NUT
7		1	SCREW, HEX HD. 1/4 - 20 x 1/2
8	388 839	1	BRACKET "U"
9	386 663	1	PIN
10	372 129	1	SPRING, COMPRESSION
11	388 842	1	PIN
12	321 427	6	RETAINING
13	321 125	1	RING, RETAINING
14	453 845	1	CABLE ASSEMBLY, BRAKE
15	388 650	1	LEVER, BRAKE
16	364 527	1	KNOB
17	200 972	1	BEARING, SLEEVE
18	388 660	1	BRACKET, BRAKE LEVER
19		2	SCREW, TRUSS HD. 1/4-20 x 1/2 HP5
20	025 254	1	DECAL, PAD PRESSURE
21	475 480	1	KNOB
22	388 824	1	ROD, ADJUSTING
23	324 505	1	BEARING, FLANGE
24		2	NUT, HEX JAM 3/8 - 24
25	366 013	1	BUSHING .37 x .62 x .18
26		2	SCREW, HEX HD. 1/2 - 13 x 1" WITH LOCKWASHER, FLAT WASHER & HEX NUT
27		1	SCREW, HEX HD. 5/16 - 18 x 2" W/NUT
28	388 692	1	BRACKET, ADJUSTING
29	477 884	2	CLAMP, CABLE
30		4	SCREW, FLAT HD. 1/4 - 20 x 7/8
31	740 168	1	KEY
32	388 688	1	SPROCKET TSB 424, G-7
33	388 678	1	BRAKE LEVER - RIGHT
34	388 674	1	PIN, BRAKE LEVER
35	388 676	1	BRAKE LEVER - LEFT
36	468 884	1	CHAIN, ROLLER #40 TSB 424, G-7
37		4	SCREW, HEX HD. 3/8 - 16 x 3/4
38	388 510	1	DRIVE ASSEMBLY SEE TSB 424 CV TSB 506, G-5
	388 515	1	MOTOR, 36V 3/4 HP G-7
	386 263	1	CARBON BRUSH SET
39	388 682	1	BRACKET, ANGLE
40	388 686	1	CLAMP, ROD
41		2	SCREW, HEX HD. 5/16 - 18 x 3/4 WITH LOCKWASHER, FLAT WASHER & HEX NUT
42	388 672	1	PIN, GROOVED
43	402 745	1	BRAKE STRAP ASSEMBLY
44	388 666	2	BRACKET, GROOVED PIN
45		2	SCREW, HEX HD. 5/16 - 18 x 1/2 W/LW
46		6	SCREW, HEX HD. 5/16 - 18 x 1 1/4 W/FW
47	388 702	1	DRUM, BRAKE
48	388 700	1	SPROCKET
49	378 380	2	BEARING, BALL
50	388 937	2	CLAMP
51		4	SCREW, HEX HD. 1/4 - 20 x 1" W/LW & NUT
52	376 032	1	WHEEL, 10.00 x 4.00
53	388 698	1	AXEL
54	344 362	1	FITTING, LUBE
55	376 030	1	WHEEL ASSEMBLY
56	388 812	1	BAR



CONTROLS & HANDLE ASSEMBLY

ITEM	PART NO	QTY	DESCRIPTION
1	388 566	1	LEVER, ACTUATOR
2		1	SCREW, HEX HD. 1/4 - 20 x 1/2 W/WASH & NUT
3		1	SCREW, HEX HD. 1/4 - 20 x 1.00 W/WASHER & NUT
4	321 532	1	BUSHING .25 x .37 x .40
5	388 606	1	GUIDE
6	370 754	1	BEARING, SLEEVE
7	388 836	1	PULLEY
8		2	SCREW, TRUSS HD. 3/16 - 18 x 1/2 W/HEX NUT
9	388 622	1	BRACKET, SWITCH
10	388 620	1	COLLAR
11	388 019	4	SWITCH
12		8	SCREW, ROUND HD. #6-32 x 1"
13	388 576	1	BRACKET, SWITCH
14	388 545	2	GRIP, HANDLE
15		1	SCREW, PAN HD. #10-24 x 1 1/4
16	388 574	2	COLLAR
17	388 562	2	ARM, SWITCH
18	365 769	2	SPRING, EXTENSION
19	151 092	1	BUSHING .18 x .25 x .15
20		2	SCREW, TRUSS HD. 1/4 - 20 x 1 1/2
21	388 580	2	TUBE
22		4	SCREW, SET #8-32 x 1/4
23	388 578	1	TUBE, HANDLE
24		2	SCREW, TRUSS HD. 1/4-20 x 5/8 W/NUT
25	454 740	1	POTENTIOMETER 5K
26	388 600	1	PULLEY ASSEMBLY
27	388 610	1	CABLE ASSEMBLY
28	388 590	1	POTENTIOMETER ASSEMBLY
29	207 075	1	SWITCH TOGGLE
	756 514	1	BOOT, TOGGLE SWITCH
30	467 410	2	LIGHT, INDICATOR
31	448 662	1	METER, BATTERY CONDITION
32	388 017	1	AMMETER D.C.
33	377 003	1	SWITCH, ROCKER
34	388 022	2	CIRCUIT BREAKER 60A
35	454 538	1	CIRCUIT BREAKER 15A
36	395 454	1	CIRCUIT BREAKER 20A
37	387 320	1	CIRCUIT BREAKER 3A
38	477 512	1	GROMMET 2.750
39	389 280	1	SOLENOID PANEL ASSEMBLY
40	467 470	1	RESISTOR .9 OHMS
41	389 295	1	PANEL, SOLENOID
42	395 452	2	CONTACTOR 36 VOLT
43	388 534	2	SOLENOID 36 VOLT D.C.
44	395 450	2	CONTACTOR 36 VOLT
45	388 505	1	SHUNT
46	469 858	2	STANDOFF, INSULATED
47	389 314	1	SWITCH, TIME DELAY
48	388 521	1	SPEED CONTROLLER, D.C. <i>TSB478, G-6</i>
49	389 270	1	BRACKET, SWITCH
50	389 268	1	CHARGER PLUG ASSEMBLY
51	016 324	1	DECAL, 36V
52	370 040	2	BUSHING

