



Electronic Service Manuals

This electronic document is provided as a service to our customers. We do not create the contents of the information contained in this document. Should you have detailed questions pertaining to the information contained in this document, you may contact Michco, or the manufacturer which provided the original information in this electronic deliverable. Michco's only part in this electronic deliverable was the electronic assembly process.

You may contact Michco through the following methods:
Phone (517) 484-9312 or (800) 331-3339 MI, OH, IN only
2011 N. High St. -- Lansing, Michigan -- 48906
Fax: (517) 484-9836
Email: CustServ@Michco.com
Web site: www.Michco.Com
Parts Web site: www.FloorMachineParts.Com

Order Parts on Line at:
www.FloorMachineParts.Com

Directly to Parts & Service:
By Email: **Shop@Michco.com**
By Fax: (517) 702-2041
By Voice: Use numbers above.

Serving the Cleaning Industry Since 1922

Notice: All copyrighted material remains property of original owners, all trademarks are property of respective owners. Manuals are subject to Manufacturer's reproduction limitations. Originals or reproductions were provided by manufacturers through a request. We make no warranty as to the correctness of information provided in this document and you assume all risk.

Whirlamatic™ 1100E



PARTS LIST **Advance MODEL 1120E-1(OBSOLETE)**



Nilfisk
Advance
setting standards

2/91 revised 2/01 FORM NO. 56042244

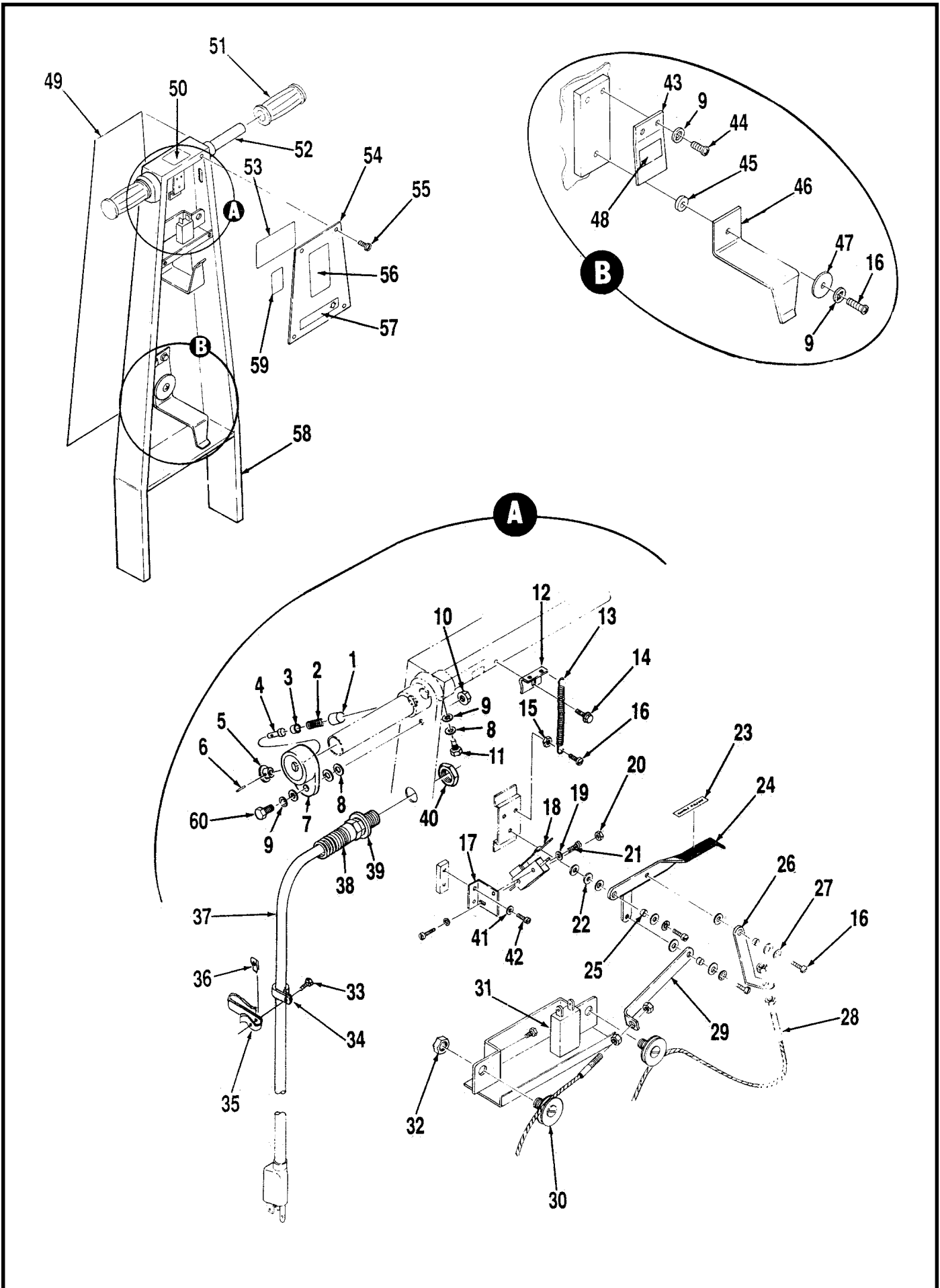
TABLE OF CONTENTS

DESCRIPTION	PAGE
Handle	1-2
Drive Motor	3-4
Base Assembly	5-6
Wiring Diagram	7-8

WHEN ORDERING PARTS

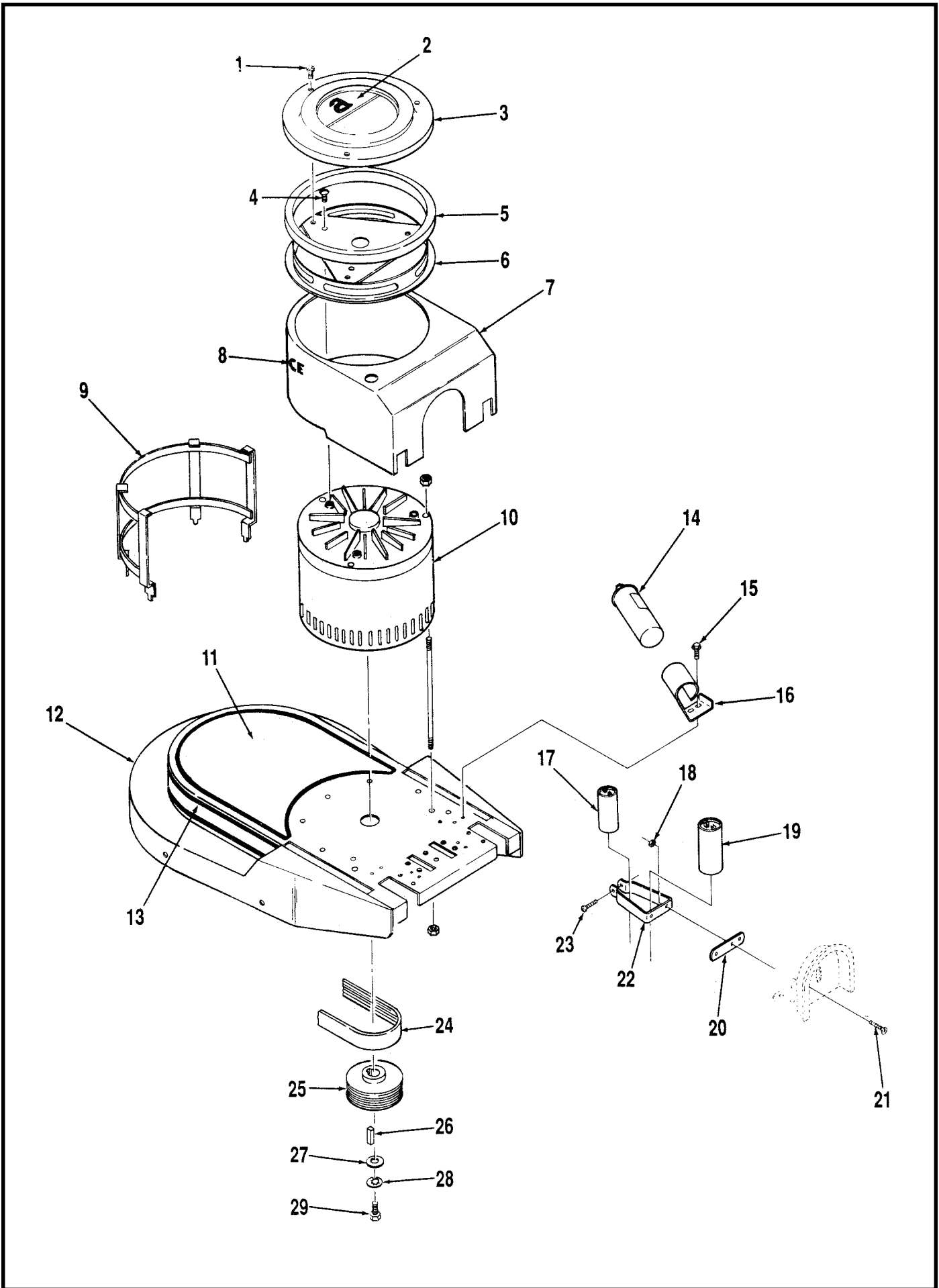
- * Use the 8 digit numbers from the "Part No." columns in this parts list.
- * Specify the model and serial number of the machine.
- * Use the space below to record the model and serial number for future reference.

Model _____ Serial No. _____



HANDLE

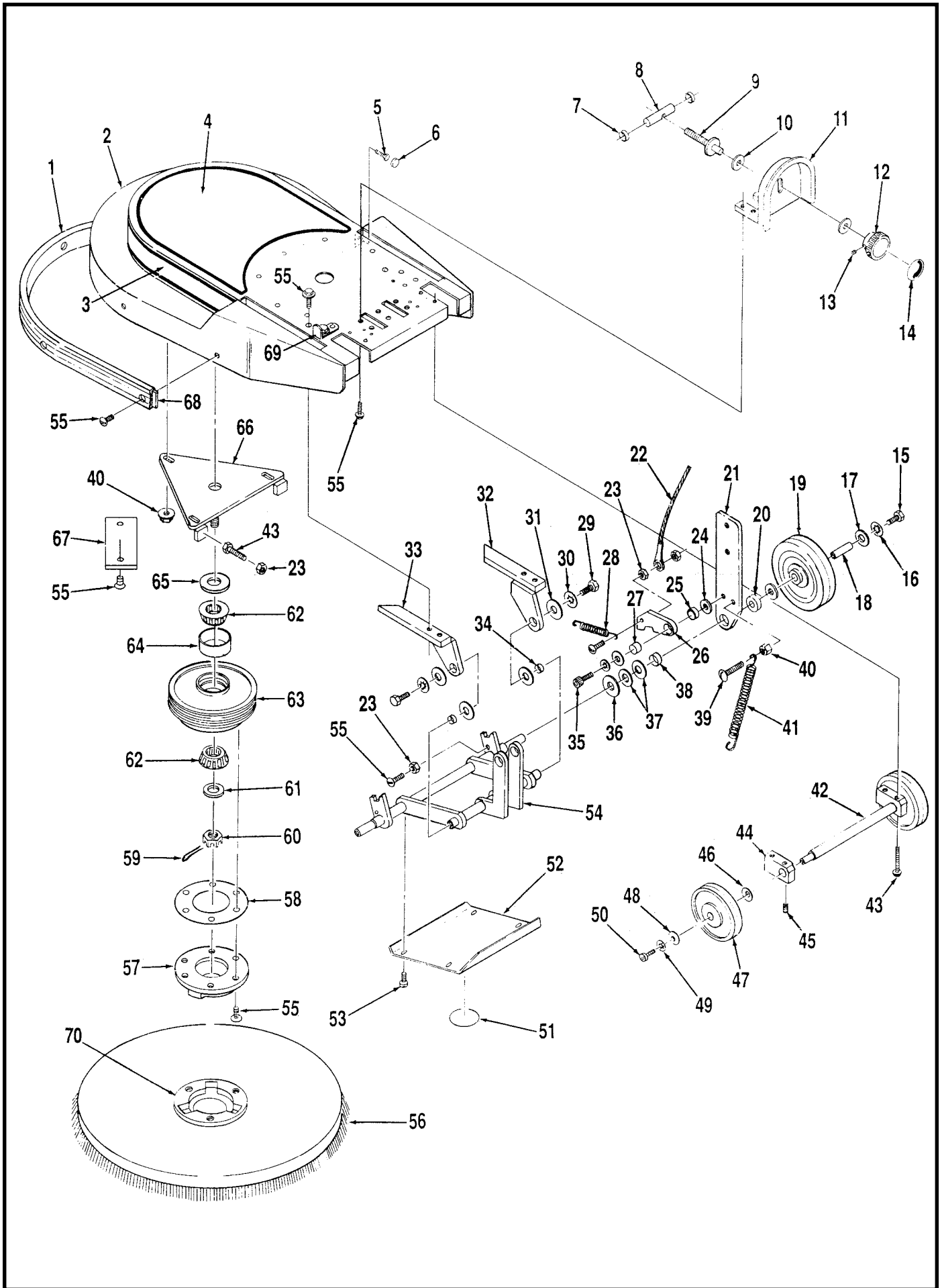
Item	Part No.	Qty	Description	Item	Part No.	Qty	Description
1	56171281	1	Bushing	31	56171535	1	Circuit Breaker
2	56201448	1	Spring	32		2	7/16-14 Nut
3	56171279	1	Plunger	33		1	#1-24 x 3/8 Screw
4	56172217	1	Pin	34	56342319	1	Clamp
5	56201405	1	Knob	35	56300187	1	Belt Clip
6	56003129	1	Spring Pin	36	56322504	1	Spring Nut
7	56172275	1	Collar	37	56331102	1	Cord Set
	56172321	1	Collar Assembly (#4-7)	38	56185504	1	Strain Relief
8		4	1/4 Flat Washer	39	56200433	1	Washer
9		2	1/4 Shakeproof Washer	40	56200441	1	Nut
10		1	1/4-20 Nut	41		2	#8 Flat Washer
11		1	1/4-20 x 1/2 Screw	42		2	#8-32 x 5/8 Screw
12	56395364	1	Tab	43	56172272	1	Spring
13	56328790	2	Spring	44		2	#10-24 x 1/4 Screw
14		1	#8-32 x 1/2 Screw	45	56387678	1	Bushing
15		2	#10-24 Nut	46	56185520	1	Cord Hook
16		6	#10-24 x 1/2 Screw	47	56387684	4	Washer
17	56185249	1	Switch Plate	48	56018336	1	Decal, Cord Hook
18	56385615	1	Switch	49	56014134	1	Decal, Handle
19		2	#6 Shakeproof Washer	50	56014924	1	Decal, Warning
20		1	#6-32 Nut	51	56388545	2	Grip
21		2	#6-32 x 7/8 Screw	52	56171342	1	Tube
22		7	#10 Flat Washer	53	56018512	1	Decal, Wiring
23	56014856	1	Decal, Lever	54	56185523	1	Cover
24	56185240	1	Lever	55		4	#8-32 x 3/8 Screw
25	56151092	3	Bushing	56	56014828	1	Decal, Warning
26	56185237	1	Link	57	56018509	1	Decal, Circuit Breaker
27		3	#10 Shakeproof Washer	58	56185529	1	Handle
28	56384909	2	Cable	59	56014326	1	Decal, Important
29	56185234	1	Link	60		1	1/4-20 x 5/8 Screw
30	56159749	2	Pulley				



DRIVE MOTOR

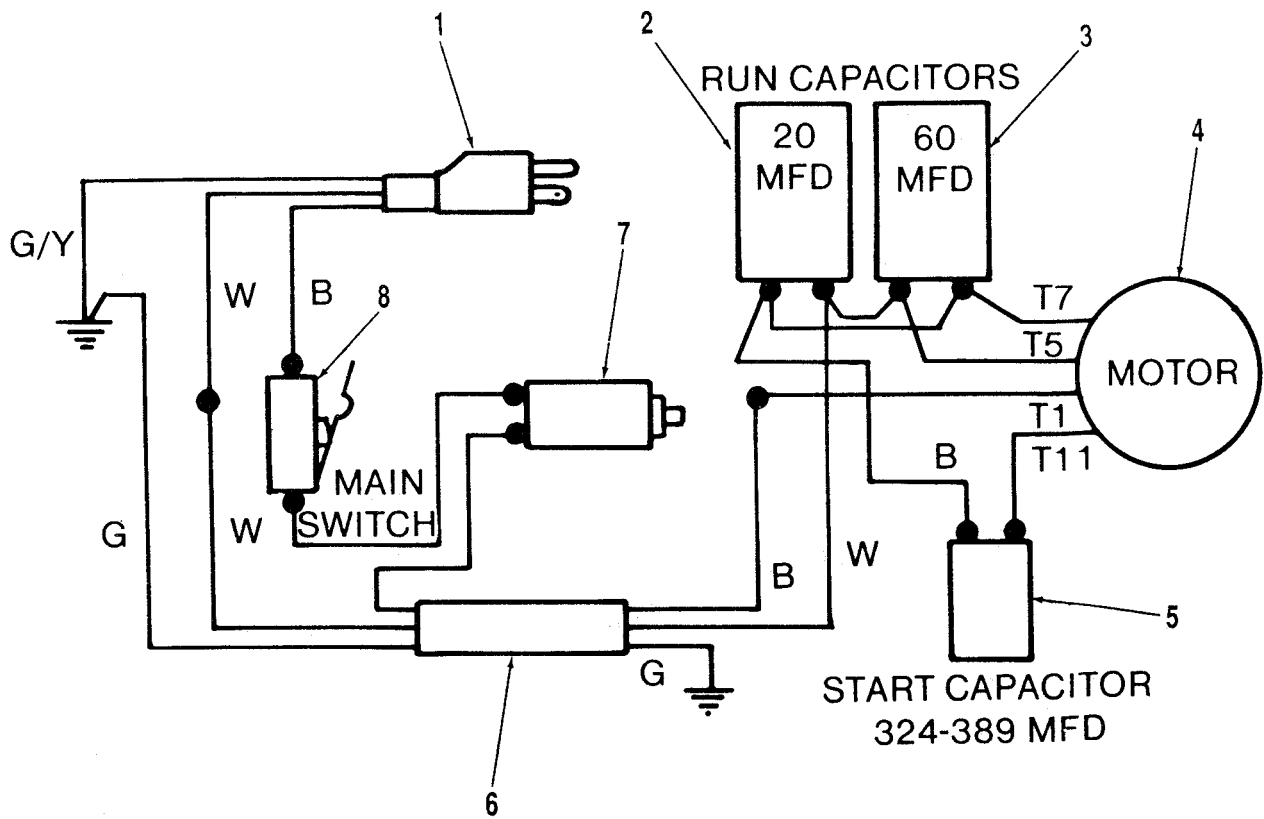
Item	Part No.	Qty	Description
1	56325134	3	Screw
2	56023308	1	Decal, Logo
3	56183125	1	Cover
4		3	5/16-18 x 5/8 Screw
5	56180032	1	Filter
6	56185430	1	Bracket
7	56185525	1	Shroud
8	56014123	1	Decal, Advance
9	56185436	1	Support
10	56185022	1	Motor 115V TSB 550 - G8
*	56185033	1	Rotating Switch
*	56185029	1	Stationary Switch
*	56185028	1	Top Bearing
*	56185178	1	Bottom Bearing
11	56014135	1	Decal, Base
12	56185526	1	Base
13	56014136	1	Decal, Stripe
14	56168440	1	Capacitor 60 MFD
15		1	#10-24 x 5/8 Screw
16	56185458	1	Clamp
17	56185446	1	Capacitor 324-389 MFD
18		2	#10-24 Nut
19	56260070	1	Capacitor 20 MFD
20	56185024	1	Strap
21		2	#10-24 x 1/2 Screw
22	56168447	1	Clamp
23		1	#10-24 x 1 Screw
24	56759066	1	Belt
25	56185442	1	Sheave
26	56158135	1	Key
27	56180200	1	Washer
28		1	5/16 Shakeproof Washer
29		1	5/16-24 x 5/8 Screw

* = Repair Parts for Motor.



BASE ASSEMBLY

Item	Part No.	Qty	Description	Item	Part No.	Qty	Description
	56185528	1	Base Assembly (#1-68)	36		2	5/8 Flat Washer
1	56185146	1	Bumper	37	56159530	4	Washer
2	56185526	1	Base	38	56478781	2	Bushing
3	56014136	1	Decal, Strip	39		2	5/16-18 x 1-1/2 Screw
4	56014135	1	Decal, Base	40		5	5/16-18 Nut
5	56386314	1	Leveler	41	56382000	4	Spring
6	56386316	1	Cap	42	56185328	1	Axle
7	56370878	2	Bearing	43		6	1/4-20 x 1-1/4 Screw
8	56185337	1	Shaft	44	56185334	2	Pillow Block
9	56185331	1	Shaft Adjustment	45		2	1/4-20 x 3/8 Set Screw
10		2	3/8 Flat Washer	46	56163767	2	Spring Washer
11	56185524	1	Bracket	47	56228102	2	Wheel
12	56475480	1	Knob	48	56203874	2	Washer
13		1	#10-24 x 1/4 Set Screw	49		2	#10 Shakeproof Washer
14	56018506	1	Decal, Pad Pressure	50		2	#10-24 x 5/8 Screw
15		2	3/8-16 x 2 Screw	51	56030080	1	Decal, Hands Clear
16		2	3/8 Shakeproof Washer	52	56185346	1	Cover
17	56385358	4	Washer	53		4	#10-24 x 1/4 Screw
18	56185156	2	Bearing	54	56185352	1	Axle
19	56185158	2	Wheel	55		17	#10-24 x 1/2 Screw
20	56449228	2	Collar	56	56505455	1	Pad Holder
21	56185230	2	Plate	57	56185059	1	Drive Cap
22	56384909	2	Cable	58	56158275	1	Gasket
23		6	#10-24 Nut	59		1	Cotter Key
24	56152781	4	Washer	60	56158313	1	Nut
25	56185263	2	Bearing	61	56163449	1	Washer
26	56185231	2	Catch	62	56378267	2	Bearing
27	56320595	2	Bushing	63	56163400	1	Pulley
28	56445177	2	Spring		56171363	1	Pulley Assembly (#63-64)
29		2	1/4-20 x 1 Screw	64	56378259	2	Bearing Cup
30		2	1/4 Shakeproof Washer	65	56171078	1	Seal
31	56370762	4	Washer	66	56185041	1	Plate
32	56185325	1	Right Bracket	67	56185154	2	Weight
33	56185322	1	Left Bracket	68	56185149	1	Bumper Strap
34	56366633	2	Bearing	69	56185410	3	Clip
35		2	5/16-18 x Screw	70	56163341	1	Clutch Plate TSB 628, G-2



WIRING DIAGRAM

Item	Part No.	Qty	Description
1	56331102	1	Power Cord
2	56260070	1	Capacitor 20 MFD
3	56168440	1	Capacitor 60 MFD
4	56185022	1	Motor 115V
5	56185446	1	Capacitor 324-389 MFD
6	56185501	1	Cord
	56185504	2	Strain Relief (for #6)
7	56171535	1	Circuit Breaker
8	56385615	1	Switch



Nilfisk-Advance, Inc.
14600 21st Avenue North
Plymouth, MN, 55447-3408
www.nilfisk-advance.com
Phone: 800-989-2235
Fax: 800-989-6566
©2001 Nilfisk-Advance, Inc.,
Plymouth, MN 55447-3408
Printed in the U.S.A.