



Electronic Service Manuals

This electronic document is provided as a service to our customers. We do not create the contents of the information contained in this document. Should you have detailed questions pertaining to the information contained in this document, you may contact Michco, or the manufacturer which provided the original information in this electronic deliverable. Michco's only part in this electronic deliverable was the electronic assembly process. By providing this manual on line we are not guaranteeing parts availability.

You may contact Michco through the following methods:

Phone (517) 484-9312 or (800) 331-3339

2011 N. High St. -- Lansing, Michigan -- 48906

Fax: (517) 484-9836

Email: CustServe@Michco.com

Web site: www.Michco.Com

Parts Web site: www.FloorMachineParts.Com

Order Parts on Line at:

www.FloorMachineParts.Com

Directly to Parts & Service:

By Email: **Shop@Michco.com**

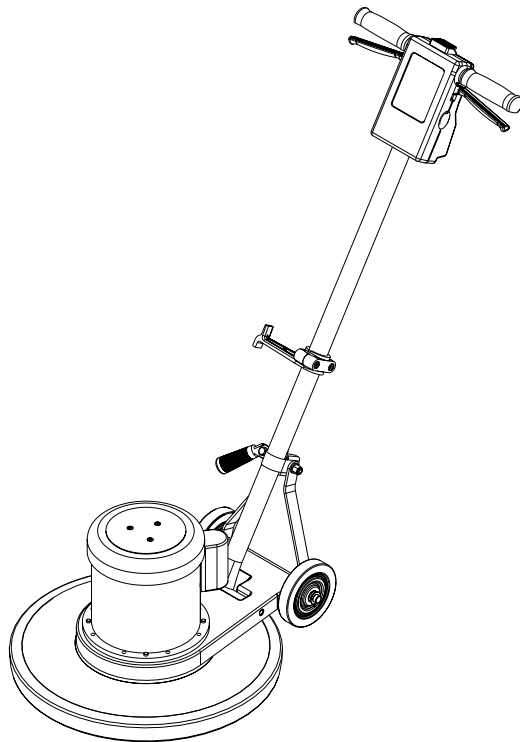
By Fax: (517) 702-2041

By Voice: Use numbers above.

Serving the Cleaning Industry Since 1922

Notice: All copyrighted material remains property of original owners, all trademarks are property of respective owners. Manuals are subject to Manufacturer's reproduction limitations. Originals or reproductions were provided by manufacturers through a request. We make no warranty as to the correctness of information provided in this document and you assume all risk. By placing these manuals on line we are not declaring our corporation to be an manufacturer authorized dealer or provider, please check our web site for authorized manufacturers we represent.

SD 130



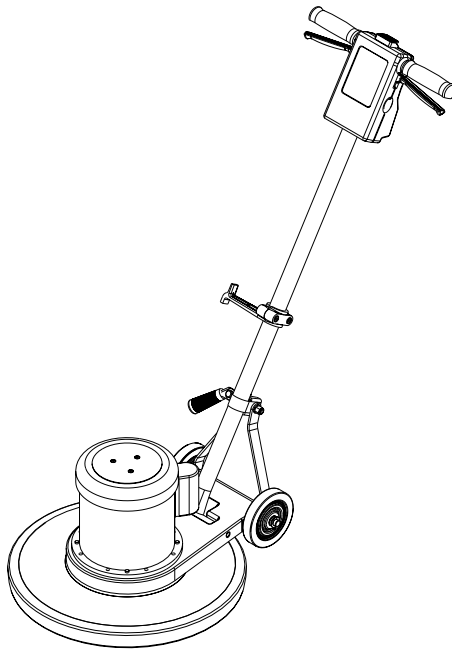
PARTS LIST **MODEL 56201625**



Nilfisk
Advance

setting standards

4/02 revised 5/04 FORM NO. 56042433

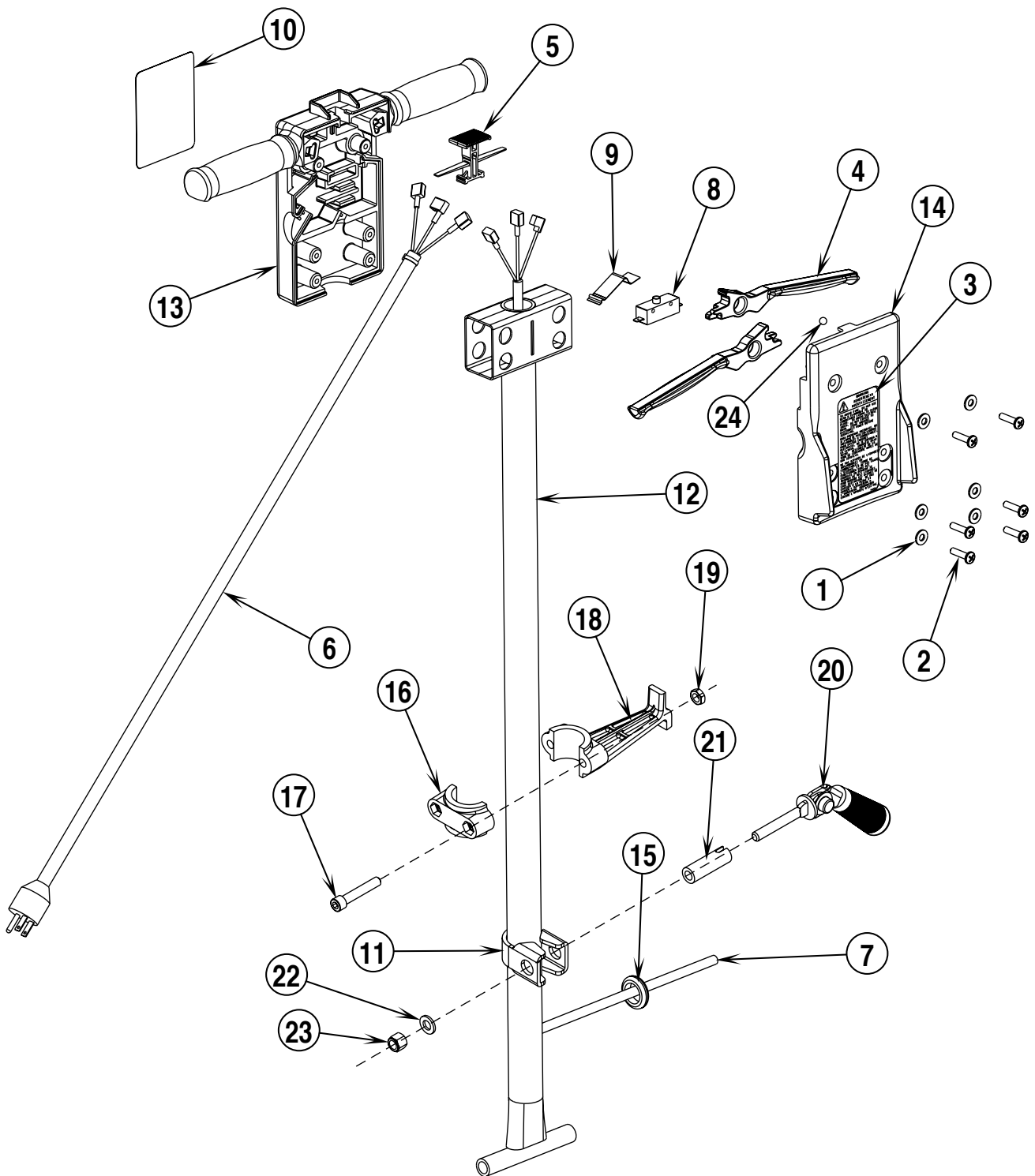


DESCRIPTION	PAGE
HANDLE ASSEMBLY	2-3
WIRING DIAGRAM	3
BASE ASSEMBLY	4-5
MOTOR / GEARBOX REPLACEMENT PARTS	6-7

WHEN ORDERING PARTS

- * Use the 8 digit numbers from the "Ref. No." columns in this parts list.
- * Specify the model and serial number of the machine.
- * Use the space below to record the model and serial number for future reference.

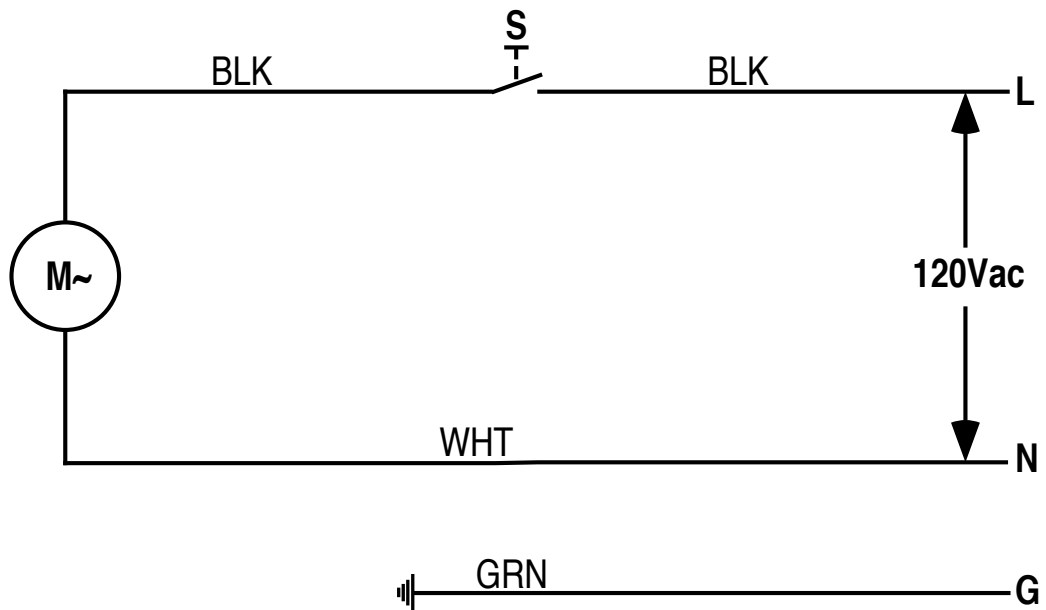
Model _____ Serial No. _____



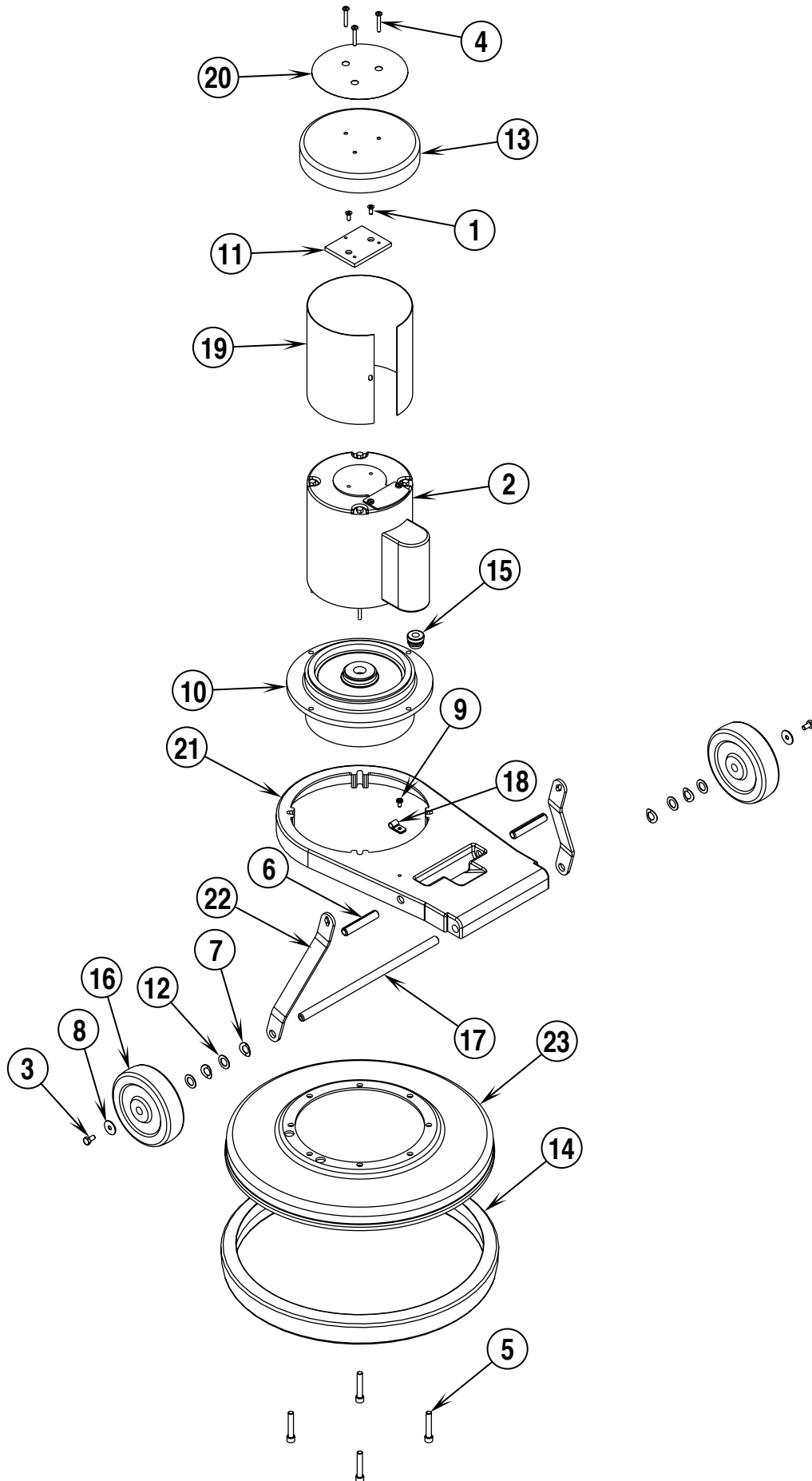
Item	Ref. No.	Qty	Description
1	56002098	6	Wsh, Flt SAE 1/4
2	56002292	6	Scr, Pan Phil 1/4-20 x 1.00
3	56014828	1	Decal, Warning
4	56201027	2	Handle Lever
5	56201031	1	Button, Lock
6	56201032	1	Cord Set, 14/3 x 50'
7	56201769	1	Cord Assembly 14/3
8	56201034	1	Switch, N.O. SPST Snap
9	56263648	1	Spring, Plate
10	56016429	1	Decal, Logo
11	56046595	1	Clamp, Handle - Lock
12	56201655	1	Handle Weldment
13	56201656	1	Handle, Front
14	56201657	1	Handle, Back
15	56055868	1	Grommet
16	56048572	1	Cord Hook, Cap
17	56003508	2	Scr, Soc Hd Loc 5/16-18 x 1.75
18	56048571	1	Cord Hook, Body
19	56009086	2	Nut, Hex Jam 5/16-18
20	56032656	1	Cam Lock
21	56046606	1	Spacer Guide
22	56009214	1	Wsh, Flt .406 x .750 x .090
23	56002769	1	Nut, Hex Nyl Loc 3/8-16
24	56201592	1	Ball, 1/4 SS
**	56038311	1	Solution Tank Kit

* = Not Shown

** = Optional



Item	Ref. No.	Qty	Description
S	56201034	1	Switch, N.O. SPST Snap
M	56026115	1	Motor 1/2HP



02-4	BASE ASSEMBLY			
	SD 130			5

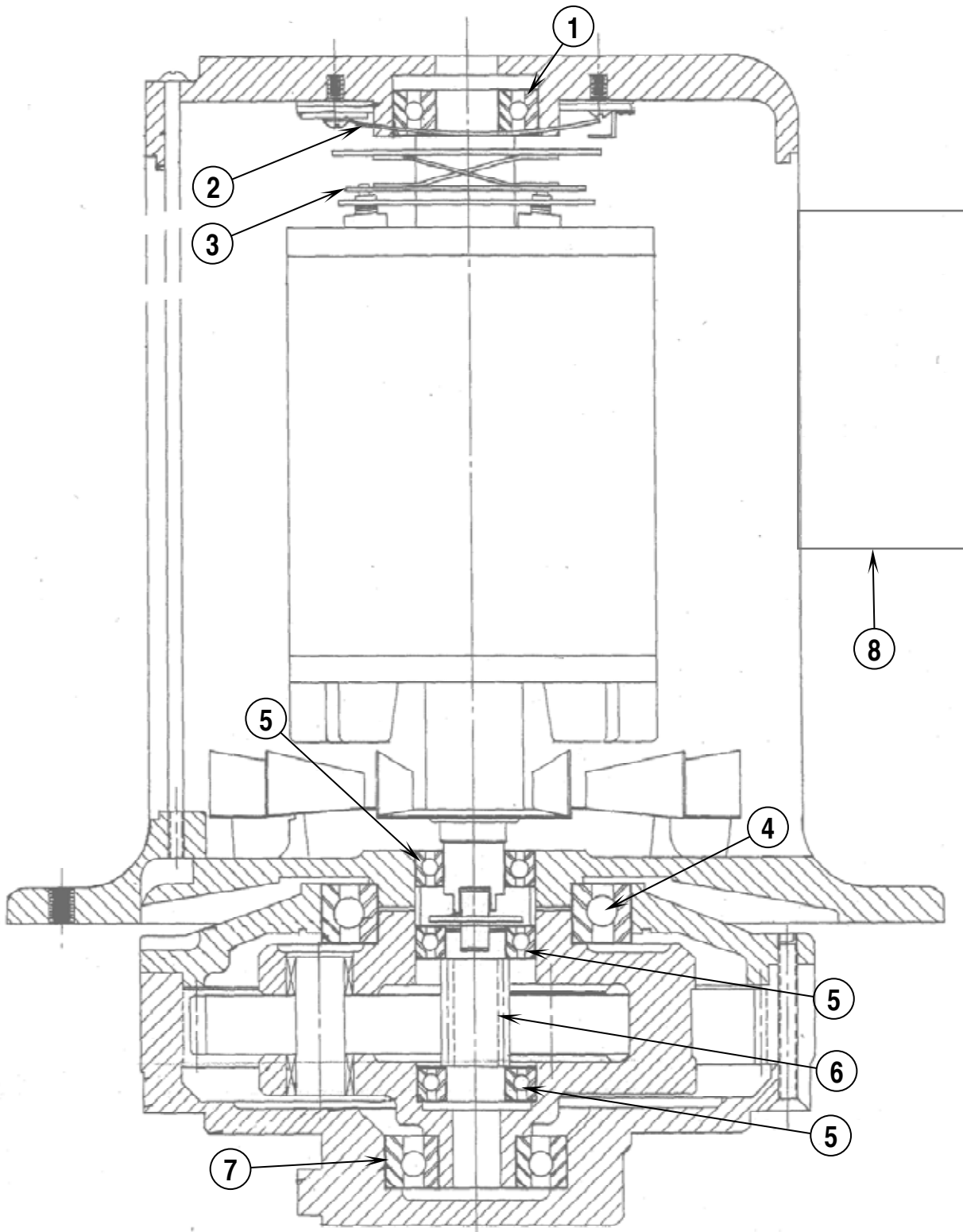
Item	Ref. No.	Qty	Description
1	56002569	2	Scr, Flt Phil Thd Form 10-24 x .50
2	56026115	1	Motor 1/2HP
3	56003039	2	Scr, Hex Hd Loc 1/4-20 x .50
4	56003506	3	Scr, Pan Phil Loc 10-32 x 1.25
5	56003508	4	Scr, Soc Hd Loc 5/16-18 x 1.75
6	56003509	2	Pin, Spr .50 x 2.75
7	56009001	4	Wsh, Bowed .516 x .906 x .008
8	56009002	2	Wsh, Flt .266 x .906 x .060
9	56009030	1	Scr, Pan Phil Thd Form 10-24 x .38
10	56035411	1	Gear Unit
11	56050294	1	Mounting Plate
12	56009266	4	Wsh, Flt .531 x .875 x .036
13	56646052	1	Motor Drip Cover
14	56057224	1	Bumper, 13 Inch
15	56740200	1	Strain Relief, .43
16	56201018	2	Wheel, 5.00 x 1.50
17	56201089	1	Axle
18	56300152	1	Clamp, P
19	56057737	1	Screen, Perf
20	56015113	1	Decal, SD130
21	56201663	1	Frame, Floor Machine
22	56640341	2	Connecting Leg
23	56646029	1	Brush Cover

Pad Holders / Pads / Brushes

	56020371	1	Pad Holder 13 (standard)
**	56020309	1	Grit Brush 13
**	56020223	1	Poly Brush 13
**	56020200	1	Steel Brush 13
**	56020196	1	Polish Brush 13
**	56020194	1	Fiber Brush 13
**	56637073	1	White Super Polish Pad 13
**	56015660	1	Green Scrub Pad 13
**	56635154	1	Red Buff Pad 13
**	56637071	1	Black Stripping Pad 13
**	56506006	A/R	Clutch Plate for Above Brushes
**	56393567	A/R	"Big Mouth" Pad Retainer

* = Not Shown
 ** = Optional

NOTE #1: Pad Holders and Brushes come complete with Industry Standard NP-92 Clutch Plate.



02-4

MOTOR / GEARBOX REPLACEMENT PARTS**SD 130****7**

Item	Ref. No.	Qty	Description
1	56027177	1	Bearing, Commutator End
2	56026933	1	Switch, Stationary
3	56026932	1	Switch, Centrifugal
4	56027210	1	Bearing, Ball
5	56027213	3	Bearing, Ball
6	56038696	1	Pinion, 10:1 Ratio
7	56027212	1	Bearing, Ball
8	56028812	1	Capacitor, 375 MFD



**Nilfisk
Advance**

setting standards

Nilfisk-Advance, Inc.

14600 21st Avenue North

Plymouth, MN 55447-3408

www.nilfisk-advance.com

Phone: 800-989-2235

Fax: 800-989-6566

©2003 Printed in the U.S.A.