



Electronic Service Manuals

This electronic document is provided as a service to our customers. We do not create the contents of the information contained in this document. Should you have detailed questions pertaining to the information contained in this document, you may contact Michco, or the manufacturer which provided the original information in this electronic deliverable. Michco's only part in this electronic deliverable was the electronic assembly process.

You may contact Michco through the following methods:
Phone (517) 484-9312 or (800) 331-3339 MI, OH, IN only
2011 N. High St. -- Lansing, Michigan -- 48906
Fax: (517) 484-9836
Email: CustServ@Michco.com
Web site: www.Michco.Com
Parts Web site: www.FloorMachineParts.Com

Order Parts on Line at:
www.FloorMachineParts.Com

Directly to Parts & Service:
By Email: **Shop@Michco.com**
By Fax: (517) 702-2041
By Voice: Use numbers above.

Serving the Cleaning Industry Since 1922

Notice: All copyrighted material remains property of original owners, all trademarks are property of respective owners. Manuals are subject to Manufacturer's reproduction limitations. Originals or reproductions were provided by manufacturers through a request. We make no warranty as to the correctness of information provided in this document and you assume all risk.

Pacemaker™ 17/20



PARTS LIST

**Advance MODELS 56168100, 56168500
56168505**

* This parts list is for machines built after June 1991. Reference note on inside of front cover.



**Nilfisk
Advance**

setting standards

10/96 revised 10/00 Form Number 56042320

* **NOTE:** Reference the machine date plate for month and year date code.
Example: "A92" - A = January, B = February, C = March, etc. / 92 = 1992(year built).

TABLE OF CONTENTS

<u>DESCRIPTION</u>	<u>PAGE</u>
Handle Assembly - Front View	1-2
Handle Assembly - Rear View	3-4
Base Assembly	5-6
Wiring Diagrams	7
Optional Brushes	8

WHEN ORDERING PARTS

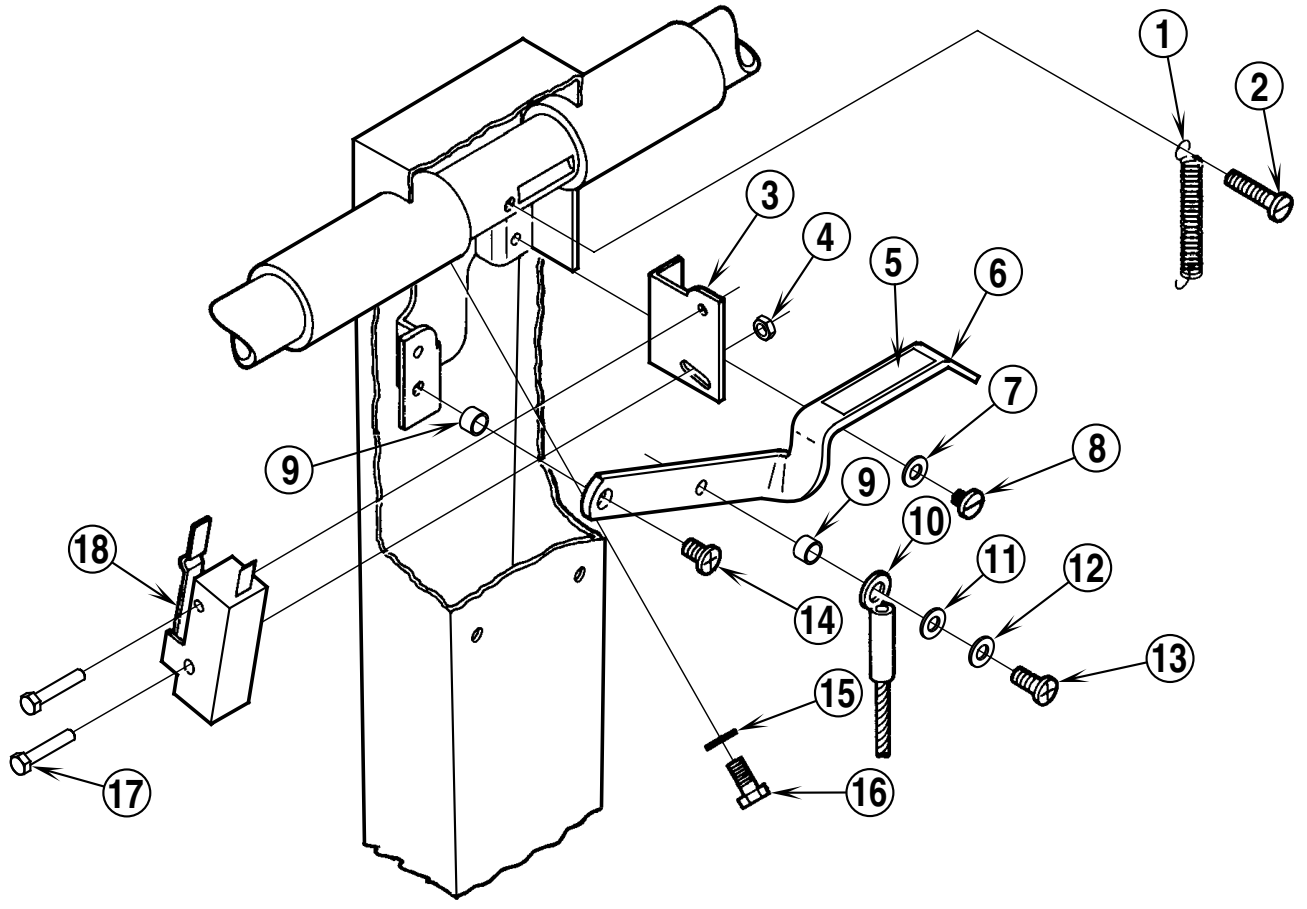
- * Use the 8 digit numbers from the "Ref. No." columns in this parts list.
- * Specify the model and serial number of the machine.
- * Use the space below to record the model and serial number for future reference.

Model _____ Serial No. _____

HANDLE ASSEMBLY - FRONT VIEW

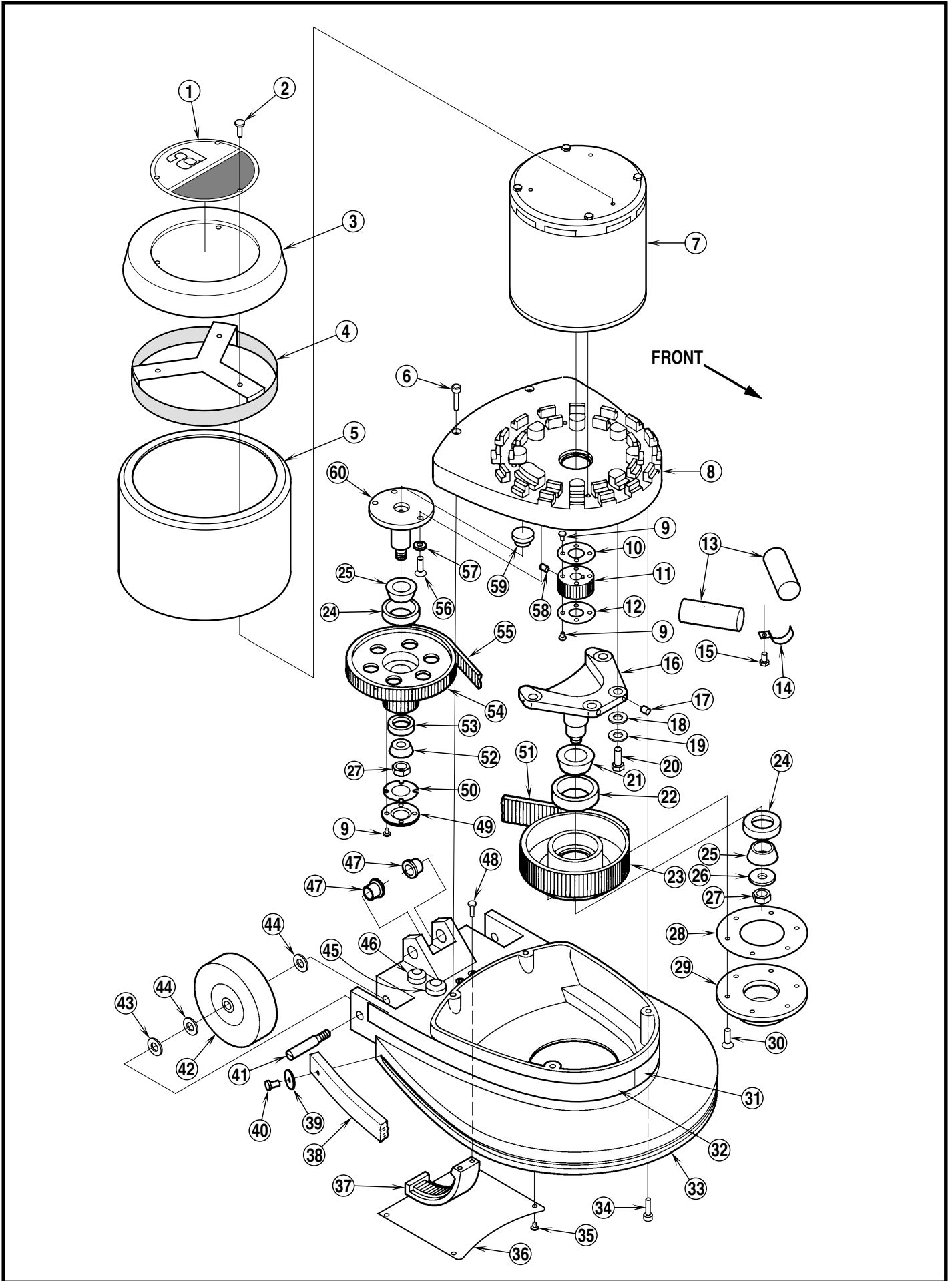
Item	Ref. No.	Qty	Description
	56172298	1	Handle Assembly (115V)
	56172299	1	Handle Assembly (230V)
1	56172274	1	Handle Weld't
2	56014924	1	Decal, Warning
3	56002003	2	Scr, Pan Phil 8-32 x .50 (qty of 3 on 230V)
*	56002244	1	Nut, Hex Machine 8-32
4	56171343	1	Tube, Handle
5	56388545	2	Hand Grip
6	56172275	1	Collar
7	56201472	1	Pin, Spring
8	56201405	1	Knob
9	56172217	1	Pin
10	56171279	1	Plunger
11	56201448	1	Spring
12	56171281	1	Bushing
13	56014096	1	Decal, 20
*	56014085	1	Decal, 17
14	56002808	1	Nut, Hex Nyl Loc 8-32 (qty of 4 on 230V)
15	56002244	1	Nut, Hex Machine 8-32
16	56009010	1	Wsh, Int Shprf #8 (qty of 4 on 230V)
17	56001860	2	Scr, Pan Phil 8-32 x .75 (230V)
18	56524069	1	Power Cord (115V)
19	56109630	1	Strain Relief (115V)
20	56171093	1	Wsh, Flt Stl .86 x 1.25 x .15 (115V)
21	56009095	1	Nut, Conduit Loc 1/2-14 (115V)
22	56153699	4	Plug, Button
23	56171336	2	Bolt, Shoulder
24	56171269	1	Bushing
25	56171373	1	Cable
26	56171361	1	Spring
27	56171132	1	Plunger
28	56001851	1	Scr, Rnd Drive 4 x .25
29	56382818	1	Strain Relief
30	56171128	1	Cord Assembly
	56171112	1	Cord Hook Assembly (#31-35)
31	56009005	1	Scr, Pan Phil SS Type B 10-16 x .75
32	56009096	1	Wsh Flt .193 x .875 x .060
33	56171110	1	Arm
34	56171111	1	Base
35	56380732	1	Spring
36	56009030	3	Scr, Pan Phil Thd Form 10-24 x .38
37	56300542	1	Clamp, Cord (230V)
38	56014828	1	Decal, Warning
39	56321737	1	Wire Nut (qty of 2 on 230V)
40	56478246	1	Cable Tie
41	56009051	2	Scr, Pan Phil Thd Form 8-32 x .38
42	56014326	1	Decal, Important
43	56172273	1	Cover
44	56009036	1	Scr, Pan Phil Thd Form 8-32 x .25
45	56300227	1	Power Cord (230V)
46	56301396	1	Strain Relief (230V)
47	56014119	1	Decal, Ground Symbol (230V)
48	56171434	1	Bracket (230V)

* = Not Shown



HANDLE ASSEMBLY - REAR VIEW

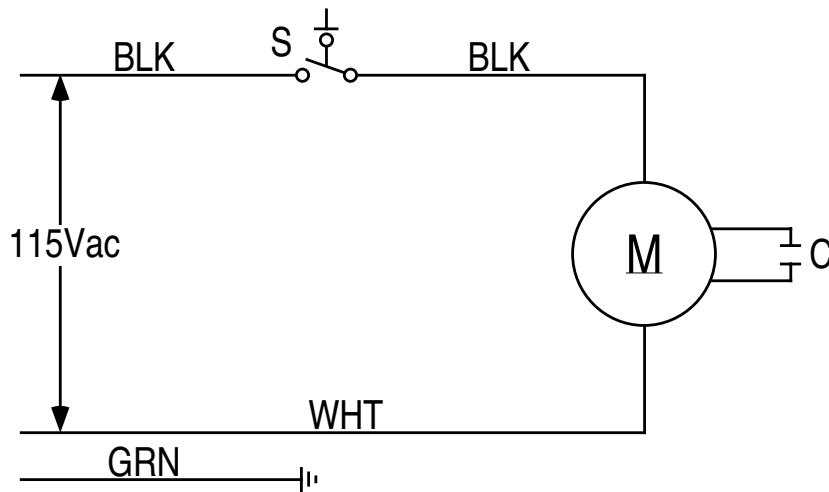
Item	Ref. No.	Qty	Description
1	56445177	1	Spring
2	56009034	1	Scr, Pan Phil Thd Form 8-32 X 7/8
3	56171209	1	Bracket
4	56002848	1	Nut, Hex Nyl Loc SS #4-40
5	56014856	1	Decal, Handle
6	56171126	1	Lever
7	56009010	2	Wsh, Int Shprf #8
8	56009036	2	Scr, Pan Phil Thd Form 8-32 X 1/4
9	56151092	2	Spacer
10	56171373	1	Cable
11	56150150	1	Washer, Bowed
12	56001954	1	Wsh, Flt #10
13	56009029	1	Scr, Pan Phil Thd Form 10-24 X 1/2
14	56009030	1	Scr, Pan Phil Thd Form 10-24 X 3/8
15	56009052	1	Wsh, Int Shprf 5/16
16	56234079	1	Scr, Machine D Shank
17	56003104	2	Scr, Hex Hd 4-40 X 1.00
18	56385615	1	Switch



BASE ASSEMBLY

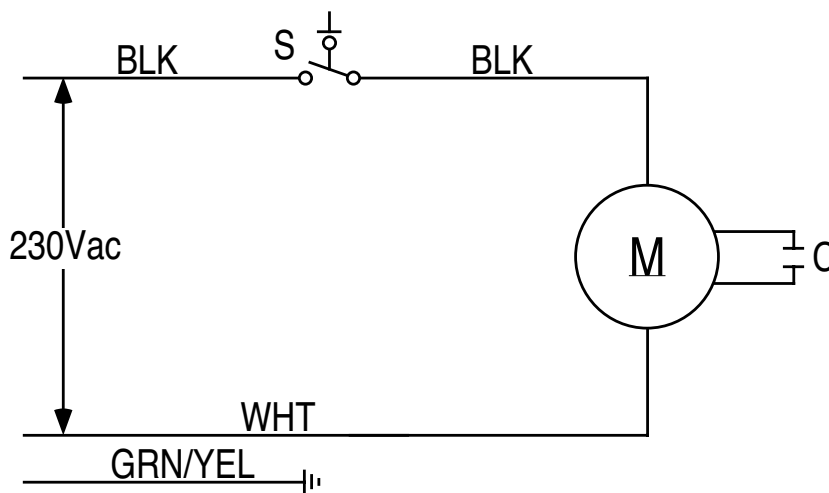
Item	Ref. No.	Qty	Description	Item	Ref. No.	Qty	Description
1	56014304	1	Decal, Logo	44	56009003	4	Wsh, Flt .51 x .93 x .07
2	56002003	3	Scr, Pan Hd 8-32 x .50	45	56109630	1	Strain Relief
3	56168135	1	Cover, Motor	46	56382818	1	Strain Relief
4	56100148	1	Clamp	47	56171095	2	Bearing
5	56100075	1	Shroud	48	56009018	4	Scr, Pan Phil Thd Form 1/4-20 x .75
6	56002201	2	Scr, Soc Hd 5/16-18 x 1.50	49	56158305	1	Cap
7	56100074	1	Motor 17", 115V / 60Hz	50	56163457	1	Gasket
	56100077	1	Motor 20", 115V / 60Hz	51	56158364	1	Flex-O-Gear
	56100078	1	Motor 20", 230V / 50Hz	52	56158216	1	Bearing
*	56100671	1	Replacement Stationary Switch	53	56158208	1	Bearing, Race
*	56100672	1	Replacement Rotating Switch	54	56157872	1	Idler Gear
8	56100076	1	Drive Housing	55	56158402	1	Flex-O-Gear
9	56009143	12	Scr, Pan Phil 4-40 x .31	56	56001881	3	Scr, Flt Soc 1/4-20 x .75
10	56158119	1	Washer	57	56155144	3	Washer
11	56158089	1	Gear, Pulley	58	56001823	1	Scr, Soc Set 10-24 x .38
*	56158135	1	Key	59	56155136	1	Eccentric
12	56163414	1	Washer	60	56155128	1	Idler Shaft
13	56153958	2	Capacitor				
14	56164232	2	Bracket	*	56171129	1	Pigtail, Electrical
15	56002824	2	Scr, Pan Phil 10-24 x 1.25				
16	56161489	1	Stud Shaft				
17	56002021	2	Scr, Soc Set 5/16-18 x .38				
18	56162957	4	Washer				
19	56009112	4	Wsh, Shprf .38				
20	56001858	4	Scr, Hex Hd 3/8-16 x 1.25				
21	56158151	1	Bearing				
22	56158143	1	Bearing Race				
23	56163368	1	Pulley				
24	56378259	2	Bearing Race				
25	56378267	2	Bearing				
26	56163449	1	Washer				
27	56158313	2	Nut				
*	56002946	2	Cotter Pin 1/16 x 1				
28	56158275	1	Gasket				
29	56163430	1	Drive Cap (Silver / NP-47)				
	56163431	1	Drive Cap (Gold / NP-92)				
30	56009127	6	Scr, Flt Phil Thd Form 10-24 x .62				
31	56014022	1	Decal, Pacemaker 17" Left				
	56014013	1	Decal, Pacemaker 20" Left				
32	56014023	1	Decal, Pacemaker 17" Right				
	56014014	1	Decal, Pacemaker 20" Right				
33	56168124	1	Housing 17" (includes #38-40 & 47)				
	56168123	1	Housing 20" (includes #38-40 & 47)				
34	56002131	2	Scr, Soc Hd 5/16-18 x 1.25				
35	56009051	4	Scr, Pan Phil Thd Form 8-32 x .38				
36	56168665	1	Cover Plate				
37	56171104	1	Ratchet				
38	56168129	1	Bumper 17"				
	56168128	1	Bumper 20"				
39	56009096	2	Wsh, Flt .19 x .87 x .06				
40	56009043	2	Scr, Pan Phil Thd Form 10-24 x .75				
41	56520845	2	Axle				
*	56002769	2	Nut, Hex Nyl Loc 3/8-16				
42	56161691	2	Wheel				
43	56135373	2	Washer, Bowed				

* = Not Shown



115V WIRING DIAGRAM

Item	Ref. No.	Qty	Description
S	56385615	1	Switch
M	56100074	1	Motor 17", 115V / 60Hz
	56100077	1	Motor 20", 115V / 60Hz
	56100671	1	Replacement Stationary Switch
	56100672	1	Replacement Rotating Switch
C	56153958	2	Capacitor



230V WIRING DIAGRAM

Item	Ref. No.	Qty	Description
S	56385615	1	Switch
M	56100078	1	Motor 20", 230V / 50Hz
	56100671	1	Replacement Stationary Switch
	56100672	1	Replacement Rotating Switch
C	56153958	2	Capacitor

OPTIONAL BRUSHES

Ref. No.	Qty	Description	Ref. No.	Qty	Description
17" Brushes For Silver NP-47 Drive Cap			56182058	A/R	"Pad Grab" Pad Retainer (snap in)
56505055	1	Magna Grit™ 46 Brush, 17"	56393567	A/R	"Big Mouth" Pad Retainer (threaded)
56505054	1	Dyna Grit™ 80 Brush, 17"			
56505078	1	MidLite Grit™ 180 Brush, 17"			
56505082	1	MidGrit™ 240 Brush, 17"			
56505059	1	AgLite™ 500 Brush, 17"			
56505331	1	Prolene Brush, 17"			
56505076	1	ProLite™ Brush, 17"			
56505334	1	Union Mix Brush, 17"			
56505330	1	Short-Trim Pad Holder, 17"			
56505180	1	Level-Set Pad Holder, 17"			
56505530	1	Soft-Touch™ Shampoo Brush, 17"			
56505537	1	Soft-Touch™ Shampoo Brush Assy, 17"			
56506001	1	Clutch Plate for Above Brushes (Silver / NP-47)			
20" Brushes For Silver NP-47 Drive Cap					
56505058	1	Magna Grit™ 46 Brush, 20"			
56505048	1	Dyna Grit™ 80 Brush, 20"			
56505079	1	MidLite Grit™ 180 Brush, 20"			
56505083	1	MidGrit™ 240 Brush, 20"			
56505063	1	AgLite™ 500 Brush, 20"			
56505450	1	Prolene Brush, 20"			
56505077	1	ProLite™ Brush, 20"			
56505454	1	Union Mix Brush, 20"			
56505455	1	Short-Trim Pad Holder, 20"			
56505183	1	Level-Set Pad Holder, 20"			
56505531	1	Soft-Touch™ Shampoo Brush, 20"			
56505538	1	Soft-Touch™ Shampoo Brush Assy, 20"			
56506001	1	Clutch Plate for Above Brushes (Silver / NP-47)			
17" Brushes For Gold NP-92 Drive Cap					
56505911	1	Magna Grit™ 46 Brush, 17"			
56505912	1	Dyna Grit™ 80 Brush, 17"			
56505918	1	MidLite Grit™ 180 Brush, 17"			
56505917	1	MidGrit™ 240 Brush, 17"			
56505913	1	AgLite™ 500 Brush, 17"			
56505914	1	Prolene Brush, 17"			
56505915	1	ProLite™ Brush, 17"			
56505916	1	Union Mix Brush, 17"			
56505910	1	Short-Trim Pad Holder, 17"			
56505270	1	Level-Set Pad Holder, 17"			
56505539	1	Soft-Touch™ Shampoo Brush Assy, 17"			
56506006	1	Clutch Plate for Above Brushes (Plastic / NP-92)			
20" Brushes For Gold NP-92 Drive Cap					
56505921	1	Magna Grit™ 46 Brush, 20"			
56505922	1	Dyna Grit™ 80 Brush, 20"			
56505928	1	MidLite Grit™ 180 Brush, 20"			
56505927	1	MidGrit™ 240 Brush, 20"			
56505923	1	AgLite™ 500 Brush, 20"			
56505924	1	Prolene Brush, 20"			
56505925	1	ProLite™ Brush, 20"			
56505926	1	Union Mix Brush, 20"			
56505920	1	Short-Trim Pad Holder, 20"			
56505280	1	Level-Set Pad Holder, 20"			
56505540	1	Soft-Touch™ Shampoo Brush Assy, 20"			
56506006	1	Clutch Plate for Above Brushes (Plastic / NP-92)			



Nilfisk-Advance, Inc.
14600 21st Avenue North
Plymouth, MN, 55447-3408
www.nilfisk-advance.com
Phone: 800-989-2235
Fax: 800-989-6566
©2000 Nilfisk-Advance, Inc.,
Plymouth, MN 55447-3408
Printed in the U.S.A.