



Electronic Service Manuals

This electronic document is provided as a service to our customers. We do not create the contents of the information contained in this document. Should you have detailed questions pertaining to the information contained in this document, you may contact Michco, or the manufacturer which provided the original information in this electronic deliverable. Michco's only part in this electronic deliverable was the electronic assembly process.

You may contact Michco through the following methods:
Phone (517) 484-9312 or (800) 331-3339 MI, OH, IN only
2011 N. High St. -- Lansing, Michigan -- 48906
Fax: (517) 484-9836
Email: CustServ@Michco.com
Web site: www.Michco.Com
Parts Web site: www.FloorMachineParts.Com

Order Parts on Line at:
www.FloorMachineParts.Com

Directly to Parts & Service:
By Email: **Shop@Michco.com**
By Fax: (517) 702-2041
By Voice: Use numbers above.

Serving the Cleaning Industry Since 1922

Notice: All copyrighted material remains property of original owners, all trademarks are property of respective owners. Manuals are subject to Manufacturer's reproduction limitations. Originals or reproductions were provided by manufacturers through a request. We make no warranty as to the correctness of information provided in this document and you assume all risk.

Matador™ 17/20



PARTS LIST

**Advance MODELS 56172200, 56172205, 56172220
56172225, 56172208**

**This parts list is for machines after serial number 291095
All models covered in this manual are OBSOLETE**



**Nilfisk
Advance**

setting standards

revised 2/01 Form Number 56042225

TABLE OF CONTENTS

<u>DESCRIPTION</u>	<u>PAGE</u>
Optional Accessories	1
Handle Assembly - Front View	2-3
Handle Assembly - Rear View	4-5
Base Assembly	6-7
Wiring Diagrams	8-9

WHEN ORDERING PARTS

- * Use the 8 digit numbers from the "Ref. No." columns in this parts list.
- * Specify the model and serial number of the machine.
- * Use the space below to record the model and serial number for future reference.

Model _____ Serial No. _____

OPTIONAL BRUSHES AND ACCESSORIES

Ref. No.	Qty	Description
----------	-----	-------------

17" Brushes For Silver NP-47 Drive Cap

56505055	1	Magna Grit™ 46 Brush, 17"
56505054	1	Dyna Grit™ 80 Brush, 17"
56505078	1	MidLite Grit™ 180 Brush, 17"
56505082	1	MidGrit™ 240 Brush, 17"
56505059	1	AgLite™ 500 Brush, 17"
56505331	1	Prolene Brush, 17"
56505076	1	ProLite™ Brush, 17"
56505334	1	Union Mix Brush, 17"
56505330	1	Short-Trim Pad Holder, 17"
56505180	1	Level-Set Pad Holder, 17"
56505530	1	Soft-Touch™ Shampoo Brush, 17"
56505537	1	Soft-Touch™ Shampoo Brush Assy, 17"
56506001	1	Clutch Plate for Above Brushes (Silver/NP-47)

20" Brushes For Silver NP-47 Drive Cap

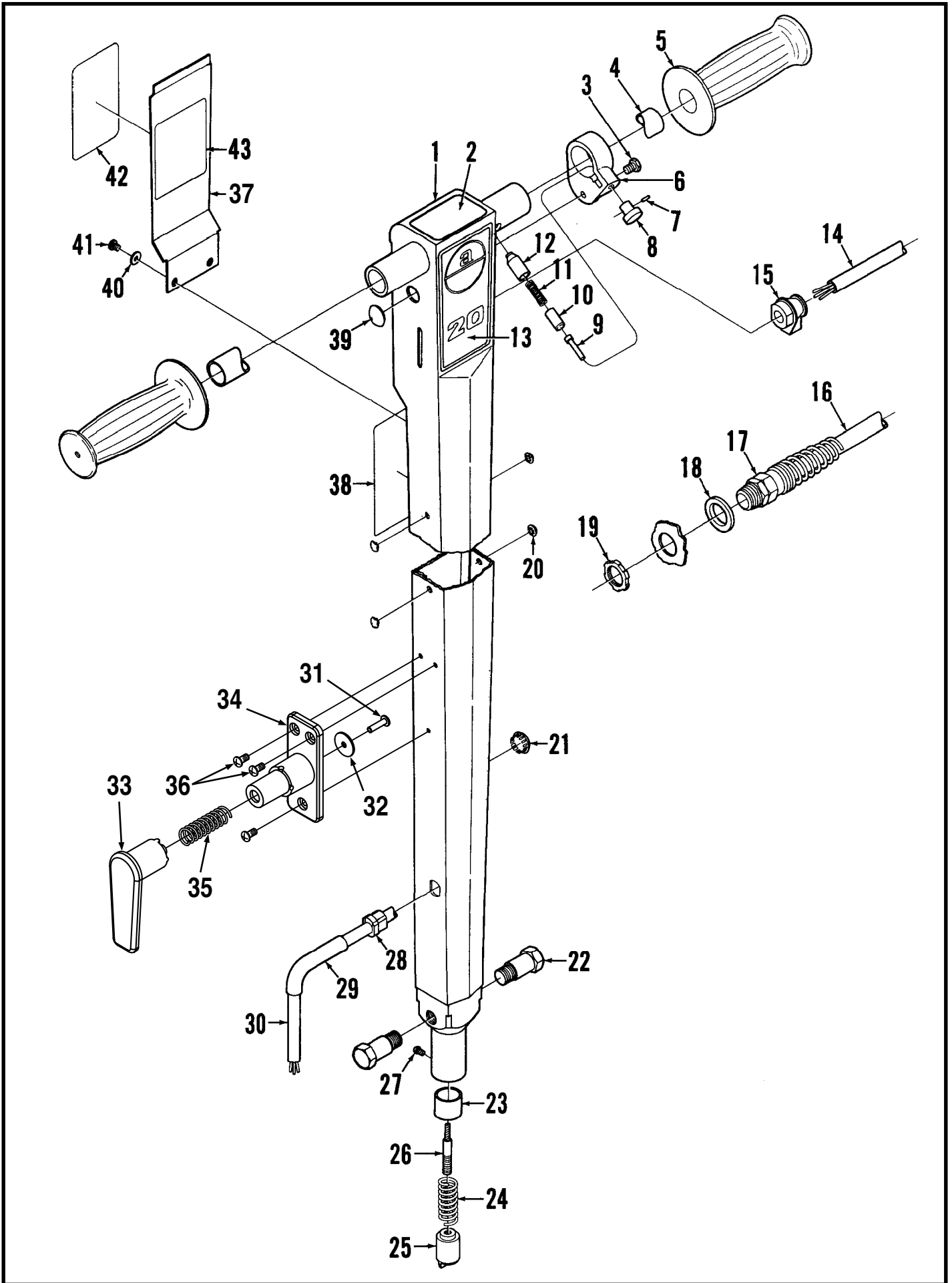
56505058	1	Magna Grit™ 46 Brush, 20"
56505048	1	Dyna Grit™ 80 Brush, 20"
56505079	1	MidLite Grit™ 180 Brush, 20"
56505083	1	MidGrit™ 240 Brush, 20"
56505063	1	AgLite™ 500 Brush, 20"
56505450	1	Prolene Brush, 20"
56505077	1	ProLite™ Brush, 20"
56505454	1	Union Mix Brush, 20"
56505455	1	Short-Trim Pad Holder, 20"
56505183	1	Level-Set Pad Holder, 20"
56505531	1	Soft-Touch™ Shampoo Brush, 20"
56505538	1	Soft-Touch™ Shampoo Brush Assy, 20"
56506001	1	Clutch Plate for Above Brushes (Silver/NP-47)

17" Brushes For Gold NP-92 Drive Cap

56505911	1	Magna Grit™ 46 Brush, 17"
56505912	1	Dyna Grit™ 80 Brush, 17"
56505918	1	MidLite Grit™ 180 Brush, 17"
56505917	1	MidGrit™ 240 Brush, 17"
56505913	1	AgLite™ 500 Brush, 17"
56505914	1	Prolene Brush, 17"
56505915	1	ProLite™ Brush, 17"
56505916	1	Union Mix Brush, 17"
56505910	1	Short-Trim Pad Holder, 17"
56505270	1	Level-Set Pad Holder, 17"
56505539	1	Soft-Touch™ Shampoo Brush Assy, 17"
56506006	1	Clutch Plate for Above Brushes (Plastic/NP-92)

20" Brushes For Gold NP-92 Drive Cap

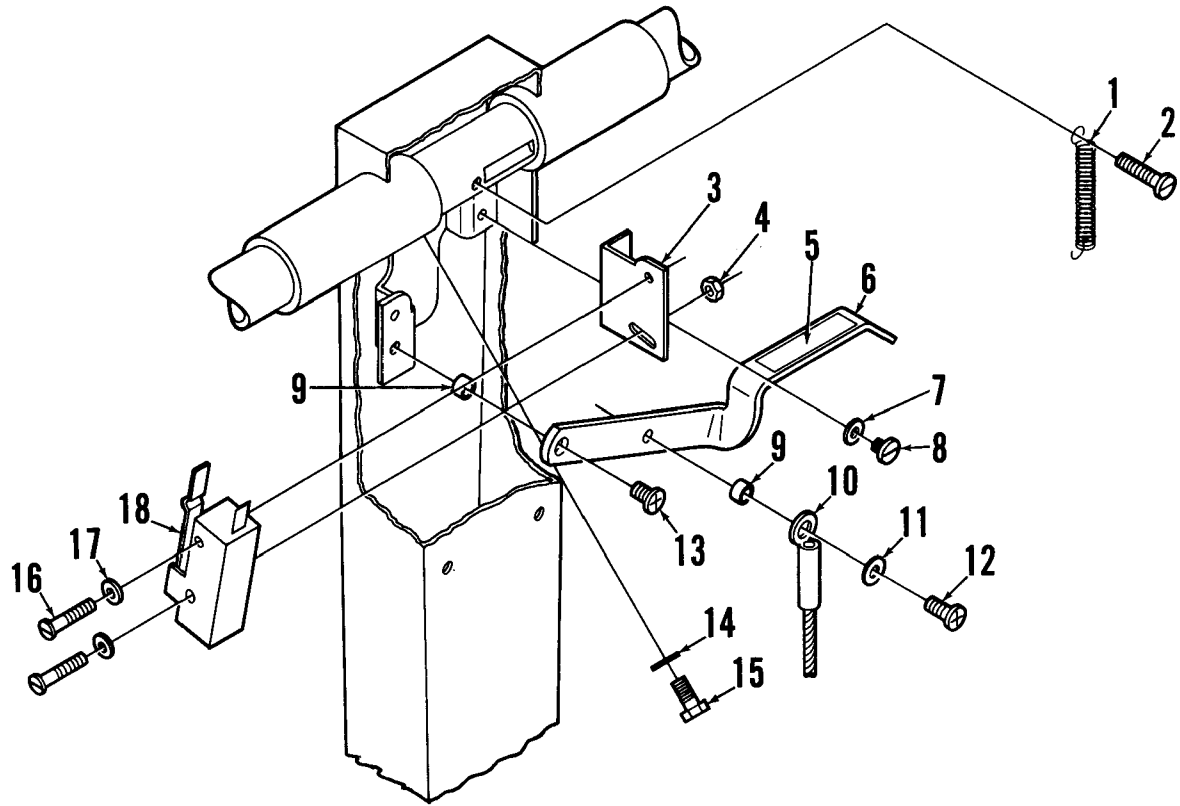
56505921	1	Magna Grit™ 46 Brush, 20"
56505922	1	Dyna Grit™ 80 Brush, 20"
56505928	1	MidLite Grit™ 180 Brush, 20"
56505927	1	MidGrit™ 240 Brush, 20"
56505923	1	AgLite™ 500 Brush, 20"
56505924	1	Prolene Brush, 20"
56505925	1	ProLite™ Brush, 20"
56505926	1	Union Mix Brush, 20"
56505920	1	Short-Trim Pad Holder, 20"
56505280	1	Level-Set Pad Holder, 20"
56505540	1	Soft-Touch™ Shampoo Brush Assy, 20"
56506006	1	Clutch Plate for Above Brushes (Plastic/NP-92)



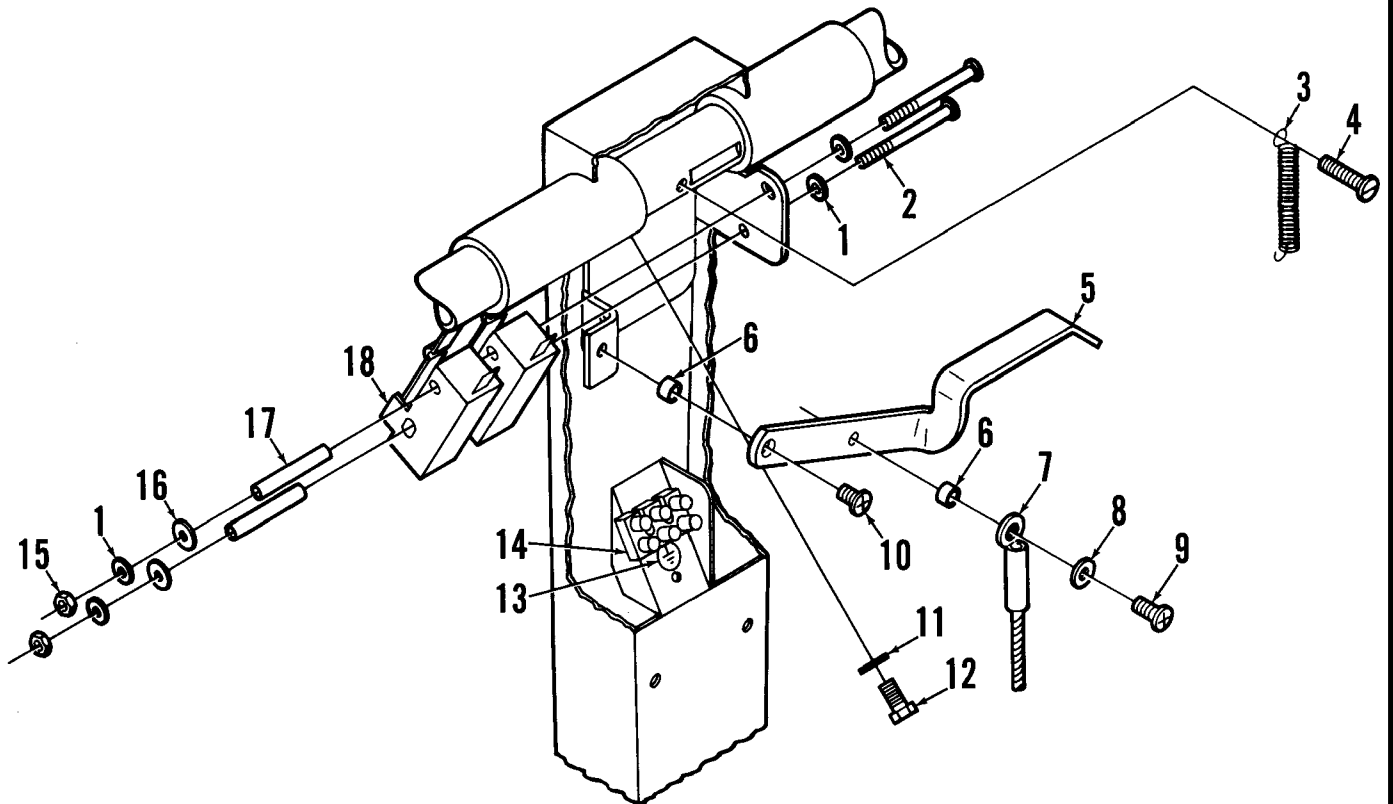
HANDLE ASSEMBLY - FRONT VIEW

Item	Ref. No.	Qty	Description
	56172298	1	Handle Assembly 115V
	56172337	1	Handle Assembly 230V
1	56172274	1	Handle 115V
	56172332	1	Handle 230V
2	56014924	1	Decal, Warning 115V
3		1	1/4-20 x 1/2 Screw
		1	1/4-20 Nut
4	56171343	1	Handle Tube 115V
	56183498	1	Handle Tube 230V
5	56388545	2	Hand Grip 115V
	56900248	2	Hand Grip 230V
6	56172275	1	Collar
	56172321	1	Collar Assy (#6-9)
7	56003129	1	Pin
8	56201405	1	Knob
9	56172217	1	Pin
10	56171279	1	Plunger
11	56201448	1	Spring
12	56171281	1	Bushing
13	56014096	1	Decal, 20
	56014085	1	Decal, 17
14	56183587	1	Cord Set 230V
15	56183586	1	Strain Relief 230V
16	56524069	1	Cord Set 115V
17	56109630	1	Strain Relief 115V
	56109632	1	Brass Insert for 109630
18	56171093	1	Washer 115V
19	56171094	1	Nut 115V
20	56153699	4	Button Plug
21	56157244	1	Button Plug
22	56171336	2	Shoulder Bolt
23	56171269	1	Bushing
24	56171361	1	Spring
25	56171132	1	Plunger
26	56171373	1	Cable
27		1	#4-40 x 1/4 Screw
28	56382817	1	Strain Relief 115V
	56163015	1	Strain Relief 230V
29	56300602	1	Tube 230V
30	56171128	1	Cord Set 115V
	56172331	1	Cord Set 230V
	56171112	1	Cord Hook Assembly (#31-35)
31	56009005	1	Scr, Pan Phil SS Type B 10-16 x .75
32	56009096	1	Wsh, Flt .193 x .875 x .060
33	56171110	1	Arm
34	56171111	1	Base
35	56380732	1	Spring
36	56009030	3	Scr, Pan Phil Thd Form 10-24 x .38
37	56172273	1	Cover 115V
	56183611	1	Cover 230V
38	56014828	1	Decal, Warning 115V
	56014204	1	Decal, Warning 230V
39	56322231	2	Button Plug 230V
40		5	#8 Washer (2 on 230V)
41		5	#8-32 x 1/4 Screw (2 on 230V)
42	56014033	1	Decal, Warning 230V
43	56014326	1	Decal, Important

115V



230V



115V HANDLE ASSEMBLY - REAR VIEW

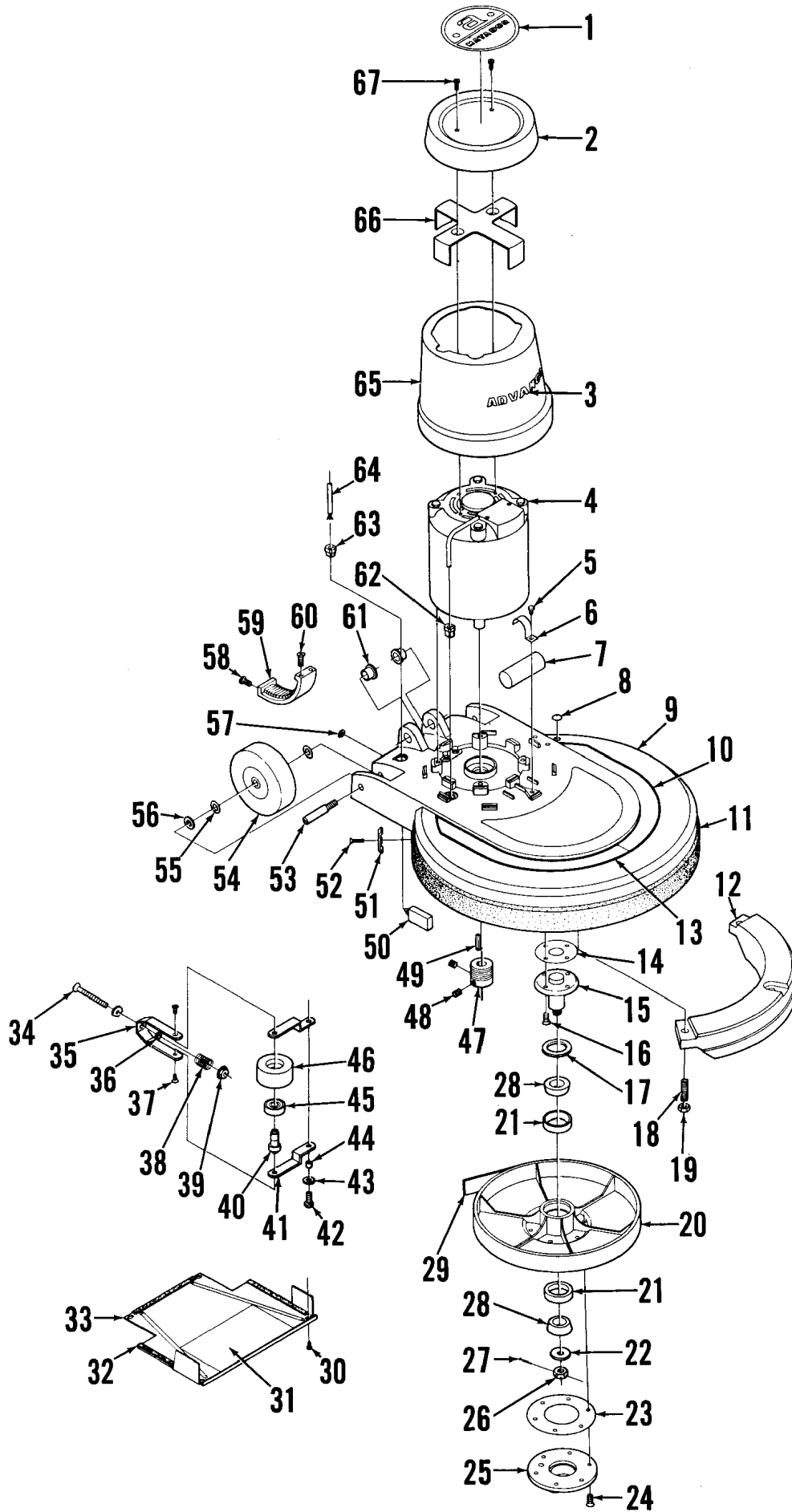
Item	Ref. No.	Qty	Description
1	56445177	1	Spring
2		1	#8-32 X 7/8 Screw
3	56171209	1	Bracket
4		1	#4-40 Nut
5	56014856	1	Decal, Handle
6	56171126	1	Lever
7		5	#8 Washer
8		5	#8-32 X 1/4 Screw
9	56151092	2	Spacer
10	56171373	1	Cable
11	56009125	1	Washer
12		1	#10-24 X 1/2 Screw
13		1	#10-24 X 3/8 Screw
14	56001905	1	5/16 Shakeproof Washer
15	56234079	1	1/4-20 X 1/2 Screw
16		2	#4-40 X 7/8 Screw
17		2	#4 Shakeproof Washer
18	56385615	1	Switch
*	56321737	1	Wire Nut
*	56478246	1	Cable Tie

* = Not Shown

230V HANDLE ASSEMBLY - REAR VIEW

Item	Ref. No.	Qty	Description
1		4	#4 Shakeproof Washer
2		2	#4-40 X 1 3/4 Screw
3	56445177	1	Spring
4		1	#8-32 X 7/8 Screw
5	56171126	1	Lever
6	56151092	2	Spacer
7	56171373	1	Cable
8	56009125	1	Washer
9		2	#10-24 X 1/2 Screw
10		1	#10-24 X 3/8 Screw
11	56001905	1	5/16 Shakeproof Washer
12	56234079	1	1/4-20 X 1/2 Screw
13	56014119	1	Decal, Ground Symbol
14	56183523	1	Terminal Block
		2	#4-40 X 5/8 Screw
15		2	#4-40 Nut
16	56200190	2	Fiber Washer
17	56183589	2	Sleeve
18	56385615	2	Switch
*	56325219	3	Cable Tie

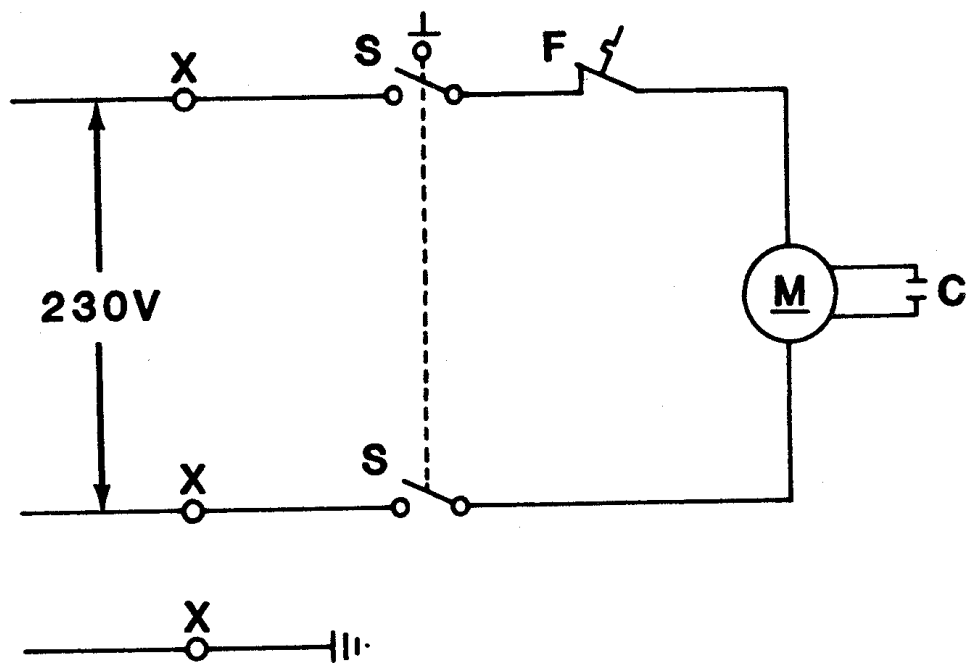
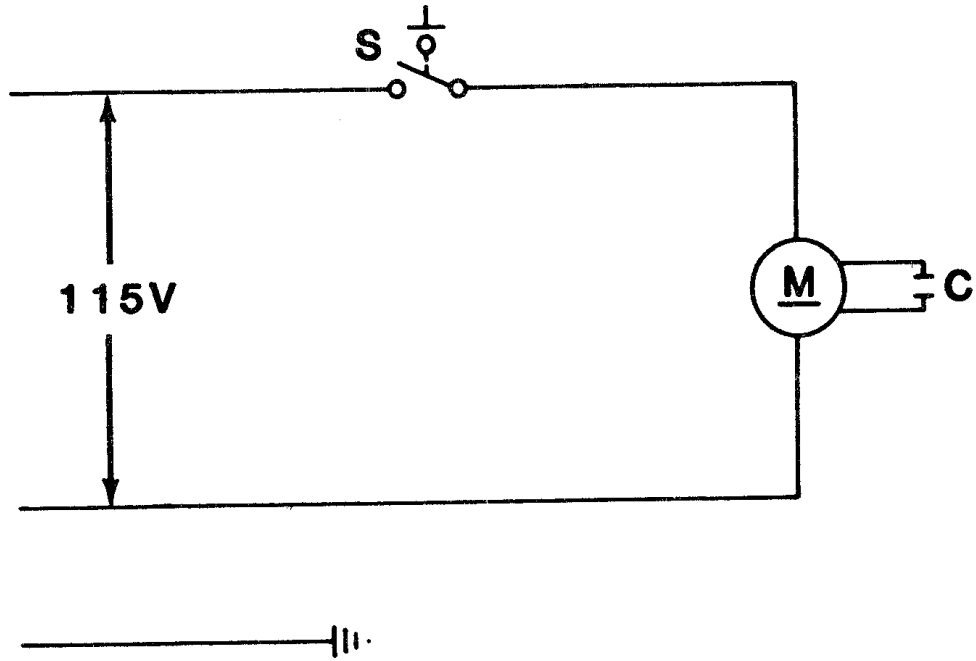
* = Not Shown



BASE ASSEMBLY

Item	Ref. No.	Qty	Description	Item	Ref. No.	Qty	Description
1	56014089	1	Decal, Matador Cover	30		4	#8-32 x 1/4 Screw
2	56172277	1	Cover	31	56014864	1	Decal, Instruction 115V
3	56014083	1	Decal, Advance	32	56320099	2'	Gasket (50.8 mm)
4	56171140	1	Motor 115V/17"	33	56171092	1	Cover 17"
	56171228	1	Replacement Stationary Switch		56171121	1	Cover 20"
	56171230	4	Through Bolt	34		1	1/4-20 x 3 Screw
	56171141	1	Motor 230V/17"	35	56171174	1	Bracket
	56524893	1	Replacement Stationary Switch	36	56206849	1	Bearing
	56171230	4	Through Bolt	37		2	#10-32 x 3/8 Screw
	56171164	1	Motor 115V/20"	38	56171177	1	Spring
	56171228	1	Replacement Stationary Switch	39		1	1/4-20 Nut
	56171166	4	Through Bolt	40	56171435	1	Stud
	56171167	1	Motor 230V/20"	41	56171176	2	Idler Bracket 115V
	56171228	1	Replacement Stationary Switch		56171039	2	Idler Bracket 230V
	56171166	4	Through Bolt	42		1	1/4-20 x 3/4 Screw
	56171167	1	Motor 230V/20"	43		1	1/4 Washer
	56171228	1	Replacement Stationary Switch	44	56368989	1	Bushing
	56171166	4	Through Bolt	45	56106070	1	Bearing
5		1	#8-32 x 1/4 Screw	46	56171433	1	Pulley
6	56171146	1	Clamp	47	56171088	1	Sheave 115V
7	56171160	1	Capacitor		56171414	1	Sheave 230V
8	56153648	1	Button Plug	48		2	5/16-18 x 1/2 Set Screw
9	56172309	1	Skirt Housing 17"	49	56443719	1	Key
	56172303	1	Skirt Housing 20"	50	56171550	1	9A Circuit Breaker 230V/17"
10	56014811	1	Decal, Left Stripe 17"		56387316	1	10A Circuit Breaker 230V/20"
	56014426	1	Decal, Left Stripe 20"	*		1	3/8-27 Brass Nut
11	56514070	1	Bumper 17"	51	56171108	2	Clamp
	56514065	1	Bumper 20"	52		2	#10-32 x 5/8 Screw
12	56171060	1	Weight 17"	53	56520845	2	Axle
	56171050	1	Weight 20"			2	3/8-16 Nut
13	56014799	1	Decal, Right Stripe 17"	54	56161691	2	Wheel
	56014425	1	Decal, Right Stripe 20"	55	56155373	4	Washer
14	56171366	2	Shim 17"	56	56155411	4	Washer (2 on 20")
15	56171056	1	Stud Shaft	57	56171369	1	Button Plug 115V
16		4	1/4-20 x 1/2 Screw	58		2	1/4-20 x 5/8 Screw
17	56171078	1	Seal	59	56171104	1	Ratchet
18	56171221	3	Stud (2 on 17")	60		2	1/4-20 x 3/4 Screw
	56171263	1	Stud 17"	61	56171095	2	Bearing
19		3	5/16-18 Nut	62	56382817	1	Strain Relief
20	56171090	1	Pulley	63	56382818	1	Strain Relief
	56171376	1	Pulley assembly (#20,21)	64	56171129	1	Cord Set 115V
21	56378259	2	Bearing Cup		56172331	1	Cord Set 230V
22	56163449	1	Washer	65	56172278	1	Shroud 17"
23	56158275	1	Gasket		56172279	1	Shroud 20"
24		6	#12-24 x 5/8 Screw	66	56171214	1	Clamp
25	56163430	1	Drive Cap (Silver/NP-47)	67		2	#10-32 x 7/8 Screw
	56163431	1	Drive Cap (Gold/NP-92)	*	56300152	1	Cord Clamp
26	56158313	1	Castle Nut	*	56321737	2	Wire Nut
27		1	Cotter Pin	* = Not Shown			
28	56378267	2	Bearing				
29	56171200	1	Belt				

Note #1: See TSB 628, G-10 for information on clutch plate change.



WIRING DIAGRAM 115V

Item	Ref. No.	Qty	Description
------	----------	-----	-------------

S	56385615	1	Switch
M	56171140	1	Motor 17"
	56171228	1	Stationary Switch
	56171164	1	Motor 20"
	56171228	1	Stationary Switch
C	56171160	1	Capacitor

WIRING DIAGRAM 230V

Item	Ref. No.	Qty	Description
------	----------	-----	-------------

X	56183523	1	Terminal Block
S	56385615	2	Switch
F	56171550	1	9A Circuit Breaker 17"
	56387316	1	10A Circuit Breaker 20"
M	56171141	1	Motor 17"
	56524893	1	Stationary Switch
	56171167	1	Motor 20"
	56524893	1	Stationary Switch
C	56171160	1	Capacitor



Nilfisk-Advance, Inc.
14600 21st Avenue North
Plymouth, MN, 55447-3408
www.nilfisk-advance.com
Phone: 800-989-2235
Fax: 800-989-6566
©2001 Nilfisk-Advance, Inc.,
Plymouth, MN 55447-3408
Printed in the U.S.A.