



Electronic Service Manuals

This electronic document is provided as a service to our customers. We do not create the contents of the information contained in this document. Should you have detailed questions pertaining to the information contained in this document, you may contact Michco, or the manufacturer which provided the original information in this electronic deliverable. Michco's only part in this electronic deliverable was the electronic assembly process.

You may contact Michco through the following methods:
Phone (517) 484-9312 or (800) 331-3339 MI, OH, IN only
2011 N. High St. -- Lansing, Michigan -- 48906
Fax: (517) 484-9836
Email: CustServ@Michco.com
Web site: www.Michco.Com
Parts Web site: www.FloorMachineParts.Com

Order Parts on Line at:
www.FloorMachineParts.Com

Directly to Parts & Service:
By Email: **Shop@Michco.com**
By Fax: (517) 702-2041
By Voice: Use numbers above.

Serving the Cleaning Industry Since 1922

Notice: All copyrighted material remains property of original owners, all trademarks are property of respective owners. Manuals are subject to Manufacturer's reproduction limitations. Originals or reproductions were provided by manufacturers through a request. We make no warranty as to the correctness of information provided in this document and you assume all risk.

High-Speed Matador™ 17/20



PARTS LIST

**Advance MODELS 56172395, 56172400, 56172410
56172425**

**This parts list is for machines after serial number 279789
All models covered in this manual are OBSOLETE**



**Nilfisk
Advance**

setting standards

10/89 revised 3/01 Form Number 56042197

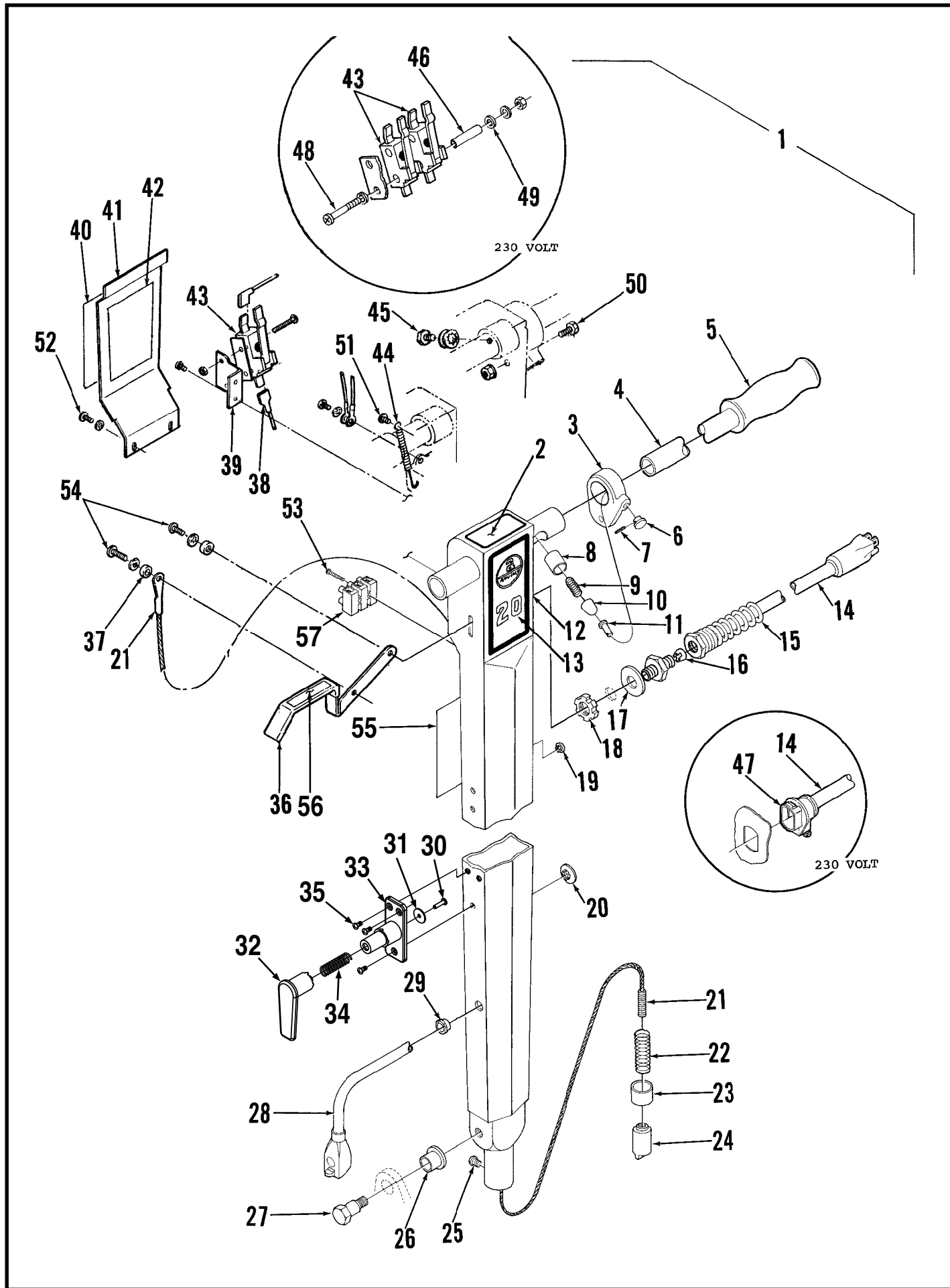
TABLE OF CONTENTS

<u>DESCRIPTION</u>	<u>PAGE</u>
Handle	1-2
Base Assembly	3-4
Wiring Diagrams	5-6
Optional Brushes And Accessories	7

WHEN ORDERING PARTS

- * Use the 8 digit numbers from the "Part No." columns in this parts list.
- * Specify the model and serial number of the machine.
- * Use the space below to record the model and serial number for future reference.

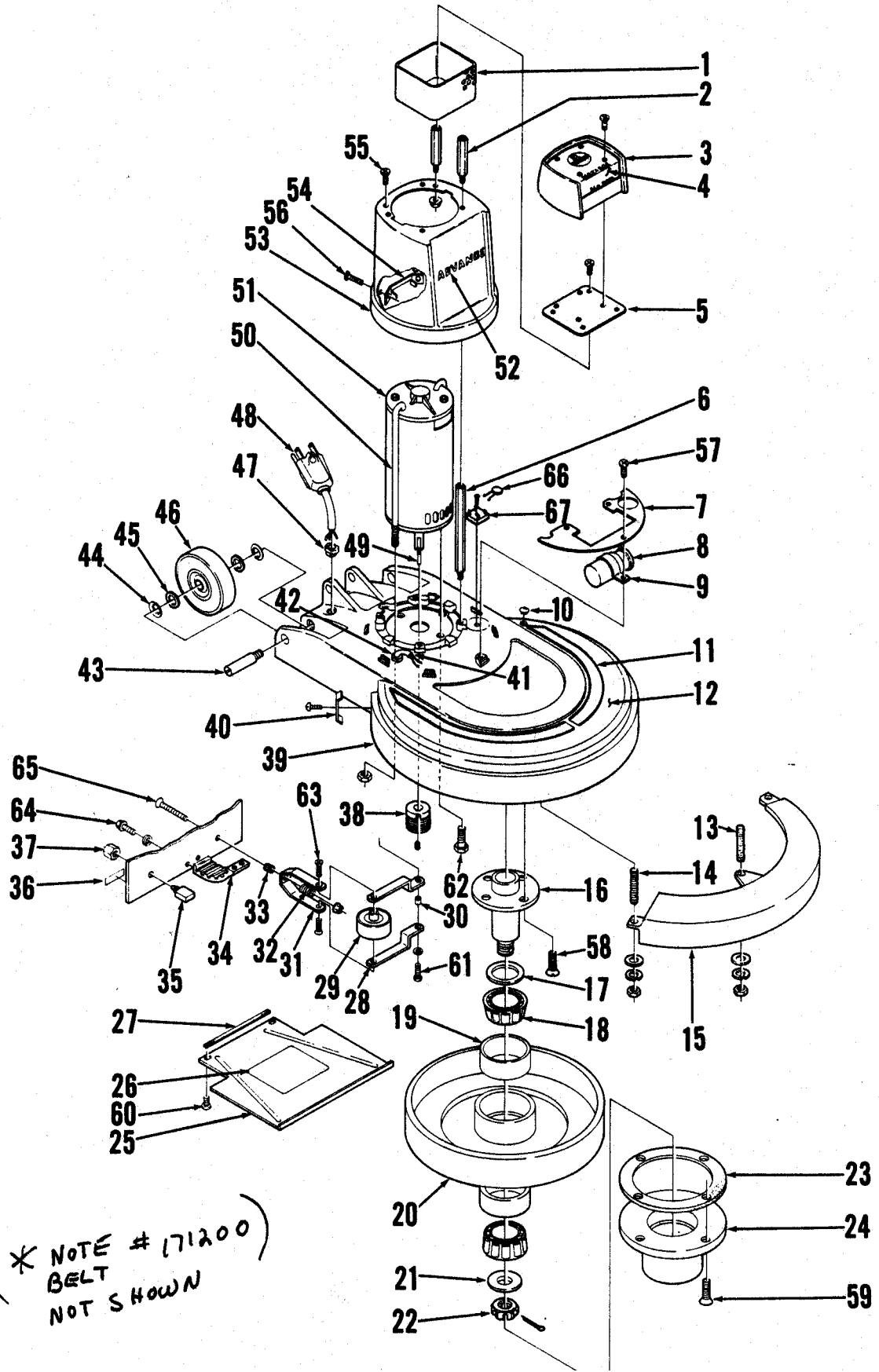
Model _____ Serial No. _____



HANDLE ASSEMBLY

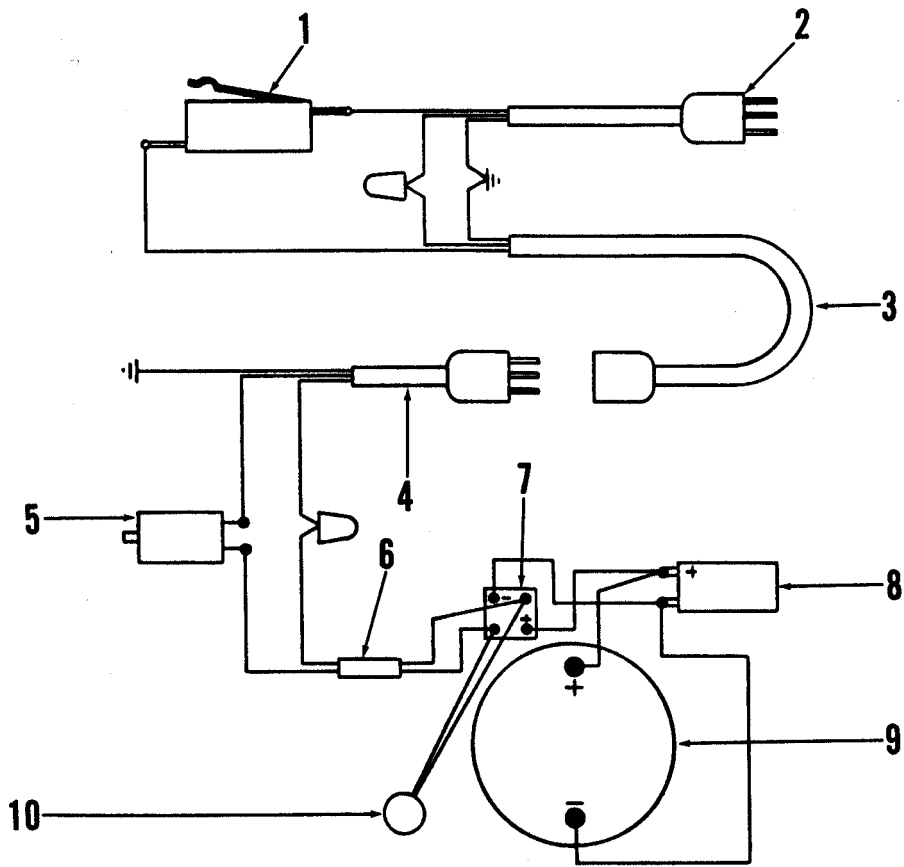
Item	Part No.	Qty	Description	Item	Part No.	Qty	Description
1	56172298	1	Handle Assembly 115V	29	56382817	1	Strain Relief 115V
	56172337	1	Handle Assembly 230V		56163015	1	Strain Relief 230V
2	56014924	1	Decal, Warning		56171112	1	Cord Hook Assembly (#30-34)
3	56172275	1	Collar	30	56009005	1	Scr, Pan Phil SS Type B 10-16 x .75
4	56171343	1	Handle Tube	31	56009096	1	Wsh Fit .193 x .875 x .060
5	56388545	2	Handle Grip	32	56171110	1	Arm
6	56201405	1	Knob	33	56171111	1	Base
7	56201472	1	Spring Pin	34	56380732	1	Spring
8	56171281	1	Bushing	35	56009030	3	Scr, Pan Phil Thd Form 10-24 x .38
9	56201448	1	Spring	36	56171126	1	Lever
10	56171279	1	Plunger	37	56151092	2	Spacer
11	56172217	1	Pin	38	56171184	1	Insulator Flag
12	56172274	1	Handle Weldment 115V	39	56171209	1	Bracket 115V only
	56172332	1	Handle Weldment 230V	40	56014033	1	Decal, Warning 230V only
13	56014085	1	Decal, Logo 17	41	56172273	1	Cover 115V
	56014096	1	Decal, Logo 20		56183611	1	Cover 230V
14	56524069	1	Cord Set 115V	42	56014326	1	Decal, Important
	56183587	1	Cord Set 230V	43	56385615	1	Switch (2 on 230V)
15	56109630	1	Strain Relief	44	56445177	1	Spring
16	56109632	1	Brass Insert	45	56234079	1	Screw
17	56171093	1	Washer	46	56183589	1	Insulator Sleeve 230V
18	56171094	1	Hex Nut	47	56183586	1	Strain Relief
19	56153699	4	Plug Button	48		2	#4-40 x 1-3/4 Screw
20	56157244	1	Plug Button	49	56200190	2	Washer
21	56171373	1	Cable Assembly	50		1	1/4-20 x 1/2 Screw
22	56171361	1	Spring	51		1	#8-32 x 7/8 Screw
23	56171269	1	Bushing	52		5	#8-32 x 1/4 Screw
24	56171132	1	Plunger	53		2	#4-40 x 5/8 Screw
25		1	Drive #4 x .25 Screw	54		2	#10-24 x 1/2 Screw
26	56171095	2	Bearing Sleeve	55	56014828	1	Decal, Warning 115V
27	56171336	2	Bolt Pivot		56014204	1	Decal, Warning 230V
28	56171128	1	Cord Set 115V	56	56014856	1	Decal, Handle 115V
	56171331	1	Cord Set 230V	57	56183523	1	Terminal Block

(* NOTE # 171200)
BELT
NOT SHOWN

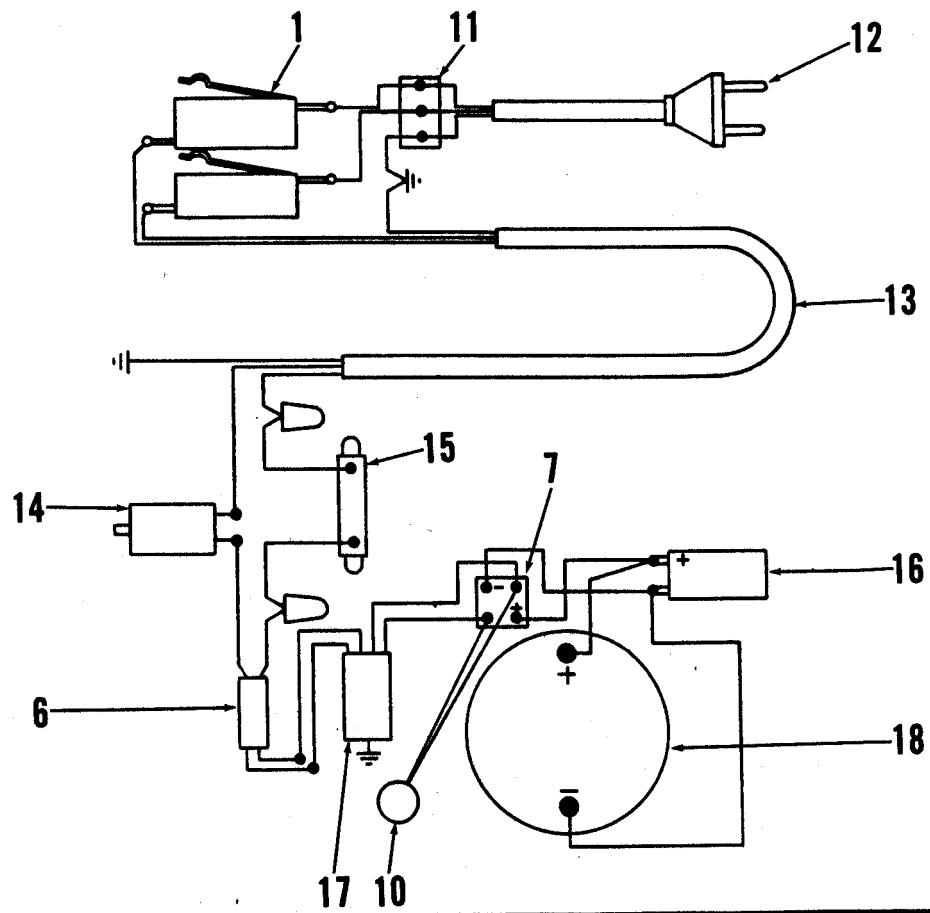


BASE ASSEMBLY

Item	Part No.	Qty	Description	Item	Part No.	Qty	Description
1	56171590	1	Guard	41	56171038	1	Cord Assembly 14/2 x 19
2	56171559	4	Spacer	42	56382817	1	Strain Relief
3	56172280	1	Cover Shroud	43	56520845	2	Axle
4	56014093	1	Decal, Matador	44	56155373	2	Bowed Washer
5	56171512	1	Bracket	45	56155411	2	Flat Washer
6	56171526	4	Spacer	46	56161691	2	Wheel
7	56171788	1	Plate	47	56382818	1	Strain Relief
8	56171552	1	Capacitor 115V	48	56171129	1	Cord Set 115V
	56171510	1	Capacitor 230V	49	56443719	1	Key
9	56171531	1	Clamp	50	56171530	2	J-Bolt
10	56153648	1	Plug Button	51	56171594	1	Motor 115V
11	56014799	1	Decal, Stripe Right 17		56171556	1	Motor 230V
	56014811	1	Decal, Stripe Left 17		56171472	1	Carbon Brush Set 115V
	56014425	1	Decal Stripe Right 20		56171473	1	Carbon Brush Set 230V
	56014426	1	Decal Stripe Left 20		56171557	1	End Bell (W/Brushes)115V
12	56172310	1	Skirt Housing 17		56171558	1	End Bell (W/Brushes)230V
	56172312	1	Skirt Housing 20	52	56014088	1	Decal, Advance
13	56171263	1	Set Screw 5/16 x 1-1/2	53	56172287	1	Motor Shroud
14	56171221	2	Set Screw 5/16 x 1-3/4	54	56171786	1	Plate
15	56171422	1	Weight Casting 17	55		11	#10-24 x 3/8 Screw
	56171047	1	Weight Casting 20	56	56387672	2	Screw
16	56171056	1	Shaft Stud	57		3	#10-24 x 3/8 Screw
17	56171078	1	Seal	58		4	1/4-20 x 5/8 Screw
18	56378267	2	Bearing	59		6	#10-24 x 1/2 Screw
19	56378259	2	Bearing Cup	60		4	#8-32 x 3/8 Screw
20	56171376	1	Pulley W/Cups	61		1	1/4-20 x 5/8 Screw
21	56163449	1	Washer	62		2	5/16-18 x 1 Screw
22	56158313	1	Nut	63		2	#10-24 x 3/8 Screw
23	56158275	1	Gasket	64		2	1/4-20 x 3/4 Screw
24	56163430	1	Drive Cap (Silver/NP-47)	65		1	1/4-20 x 3 Screw
	56163431	1	Drive Cap (Gold/NP-92)	66	56387554	1	Varistor
25	56171092	1	Cover 17	67	56180162	1	Rectifier
	56171121	1	Cover 20	68	56171200	1	Belt
26	56014843	1	Decal, Instructions 115V only				
27	56320099	2'	Gasket				Accessories (Not Included)
28	56171039	2	Bracket Idler 17				
	56171176	2	Bracket Idler 20		56505331	1	Prolene Scrub Brush 17
29	56171437	1	Idler Assembly		56505450	1	Prolene Scrub Brush 20
30	56206784	1	Bushing		56505334	1	Union Mix Polish 17
31	56171174	1	Bracket		56505454	1	Union Mix Polish 20
32	56171177	1	Spring		56163341	1	Clutch Plate 17, 20
33	56206849	1	Nylon Bearing		56505330	1	Short Trim Pad Holder 17
34	56171104	1	Ratchet		56505455	1	Short Trim Pad Holder 20
35	56171554	1	Circuit Breaker 16A 115V		56182058	1	Lock Collar 17, 20
	56171550	1	Circuit Breaker 9A 230V		56161773	1	Level Set Pad Holder 17
36	56014873	1	Decal, Circuit Breaker		56161782	1	Level Set Pad Holder 20
37	56171541	1	Hex Nut 3/8-27		56168701	1	Solution Tank Handle Mount 17
38	56171414	1	Sheave Poly-V 17		56168700	1	Solution Tank Handle Mount 20
	56171088	1	Sheave Poly-V 20		56171700	1	Solution Tank Motor Mount 17, 20
39	56514070	1	Bumper 17		56172305	1	Splash Guard 17
	56514065	1	Bumper 20		56172313	1	Splash Guard 20
40	56171108	2	Bumper Clamp		56171409	1	Shampoo Brush 17
					56171295	1	Shampoo Brush 20
					56600358	1	Spray Buff Mister 17, 20



230 VOLT



WIRING DIAGRAM

Item	Part No.	Qty	Description
1	56385615	1	Snap Switch (2 on 230V)
2	56524069	1	Cord Set
3	56171128	1	Cord Set
4	56171129	1	Cord Set
5	56171554	1	Circuit Breaker 16A
6	56171038	1	Cord Assembly 14/2 x 19
7	56180162	1	Rectifier
8	56171552	1	Capacitor
9	56171594	1	Motor 115V
10	56387554	1	Varistor Assembly
11	56183523	1	Terminal Block
12	56183587	1	Cord Set
13	56172331	1	Cord Set
14	56171550	1	Circuit Breaker 9A
15	56172260	1	Resistor
16	56171510	1	Capacitor
17	56171743	1	Filter Assembly
18	56171556	1	Motor 230V

OPTIONAL BRUSHES AND ACCESSORIES

Part No.	Qty	Description	Part No.	Qty	Description
17" Brushes For Silver NP-47 Drive Cap					
56505055	1	Magna Grit™ 46 Brush, 17"	56182058	A/R	"Pad Grab" Pad Retainer (snap in)
56505054	1	Dyna Grit™ 80 Brush, 17"	56393567	A/R	"Big Mouth" Pad Retainer (threaded)
56505078	1	MidLite Grit™ 180 Brush, 17"	56168701	1	Solution Tank Handle Mount, 17"
56505082	1	MidGrit™ 240 Brush, 17"	56168700	1	Solution Tank Handle Mount, 20"
56505059	1	AgLite™ 500 Brush, 17"	56171700	1	Solution Tank Motor Mount, 17" / 20"
56505331	1	Prolene Brush, 17"	56172305	1	Splash Guard, 17"
56505076	1	ProLite™ Brush, 17"	56172313	1	Splash Guard, 20"
56505334	1	Union Mix Brush, 17"	56600358	1	Spray Buff Mister, 17" / 20"
56505330	1	Short-Trim Pad Holder, 17"			
56505180	1	Level-Set Pad Holder, 17"			
56505530	1	Soft-Touch™ Shampoo Brush, 17"			
56505537	1	Soft-Touch™ Shampoo Brush Assy, 17"			
56506001	1	Clutch Plate for Above Brushes (Silver/NP-47)			
20" Brushes For Silver NP-47 Drive Cap					
56505058	1	Magna Grit™ 46 Brush, 20"			
56505048	1	Dyna Grit™ 80 Brush, 20"			
56505079	1	MidLite Grit™ 180 Brush, 20"			
56505083	1	MidGrit™ 240 Brush, 20"			
56505063	1	AgLite™ 500 Brush, 20"			
56505450	1	Prolene Brush, 20"			
56505077	1	ProLite™ Brush, 20"			
56505454	1	Union Mix Brush, 20"			
56505455	1	Short-Trim Pad Holder, 20"			
56505183	1	Level-Set Pad Holder, 20"			
56505531	1	Soft-Touch™ Shampoo Brush, 20"			
56505538	1	Soft-Touch™ Shampoo Brush Assy, 20"			
56506001	1	Clutch Plate for Above Brushes (Silver/NP-47)			
17" Brushes For Gold NP-92 Drive Cap					
56505911	1	Magna Grit™ 46 Brush, 17"			
56505912	1	Dyna Grit™ 80 Brush, 17"			
56505918	1	MidLite Grit™ 180 Brush, 17"			
56505917	1	MidGrit™ 240 Brush, 17"			
56505913	1	AgLite™ 500 Brush, 17"			
56505914	1	Prolene Brush, 17"			
56505915	1	ProLite™ Brush, 17"			
56505916	1	Union Mix Brush, 17"			
56505910	1	Short-Trim Pad Holder, 17"			
56505270	1	Level-Set Pad Holder, 17"			
56505539	1	Soft-Touch™ Shampoo Brush Assy, 17"			
56506006	1	Clutch Plate for Above Brushes (Plastic/NP-92)			
20" Brushes For Gold NP-92 Drive Cap					
56505921	1	Magna Grit™ 46 Brush, 20"			
56505922	1	Dyna Grit™ 80 Brush, 20"			
56505928	1	MidLite Grit™ 180 Brush, 20"			
56505927	1	MidGrit™ 240 Brush, 20"			
56505923	1	AgLite™ 500 Brush, 20"			
56505924	1	Prolene Brush, 20"			
56505925	1	ProLite™ Brush, 20"			
56505926	1	Union Mix Brush, 20"			
56505920	1	Short-Trim Pad Holder, 20"			
56505280	1	Level-Set Pad Holder, 20"			
56505540	1	Soft-Touch™ Shampoo Brush Assy, 20"			
56506006	1	Clutch Plate for Above Brushes (Plastic/NP-92)			



**Nilfisk
Advance**
setting standards

Nilfisk-Advance, Inc.
14600 21st Avenue North
Plymouth, MN, 55447-3408
www.nilfisk-advance.com
Phone: 800-989-2235
Fax: 800-989-6566
©2001 Nilfisk-Advance, Inc.,
Plymouth, MN 55447-3408
Printed in the U.S.A.