



Electronic Service Manuals

This electronic document is provided as a service to our customers. We do not create the contents of the information contained in this document. Should you have detailed questions pertaining to the information contained in this document, you may contact Michco, or the manufacturer which provided the original information in this electronic deliverable. Michco's only part in this electronic deliverable was the electronic assembly process.

You may contact Michco through the following methods:
Phone (517) 484-9312 or (800) 331-3339 MI, OH, IN only
2011 N. High St. -- Lansing, Michigan -- 48906
Fax: (517) 484-9836
Email: CustServ@Michco.com
Web site: www.Michco.Com
Parts Web site: www.FloorMachineParts.Com

Order Parts on Line at:
www.FloorMachineParts.Com

Directly to Parts & Service:
By Email: **Shop@Michco.com**
By Fax: (517) 702-2041
By Voice: Use numbers above.

Serving the Cleaning Industry Since 1922

Notice: All copyrighted material remains property of original owners, all trademarks are property of respective owners. Manuals are subject to Manufacturer's reproduction limitations. Originals or reproductions were provided by manufacturers through a request. We make no warranty as to the correctness of information provided in this document and you assume all risk.

Aquamatic Selectric™



PARTS LIST **Advance MODEL 56263500(Obsolete)**

This parts list is for machines after serial number 470048



Nilfisk
Advance

setting standards

revised 11/00 FORM NUMBER 56042255

TABLE OF CONTENTS

<u>DESCRIPTION</u>	<u>PAGE</u>
Chassis and Handle	1-2
Pivot Box Assembly	3-4
Drive System	5-6
Wiring Ladder Diagram	7-8
Wiring Diagram	9-10
Brush Lift Lever	11-12
Brush Motor and Pump	13-14
Vacuum Motor and Pick-Up Tool	15-16
Tank Assembly (before SN 503977)	17-18
Tank Assembly (after SN 503976)	19-20

WHEN ORDERING PARTS

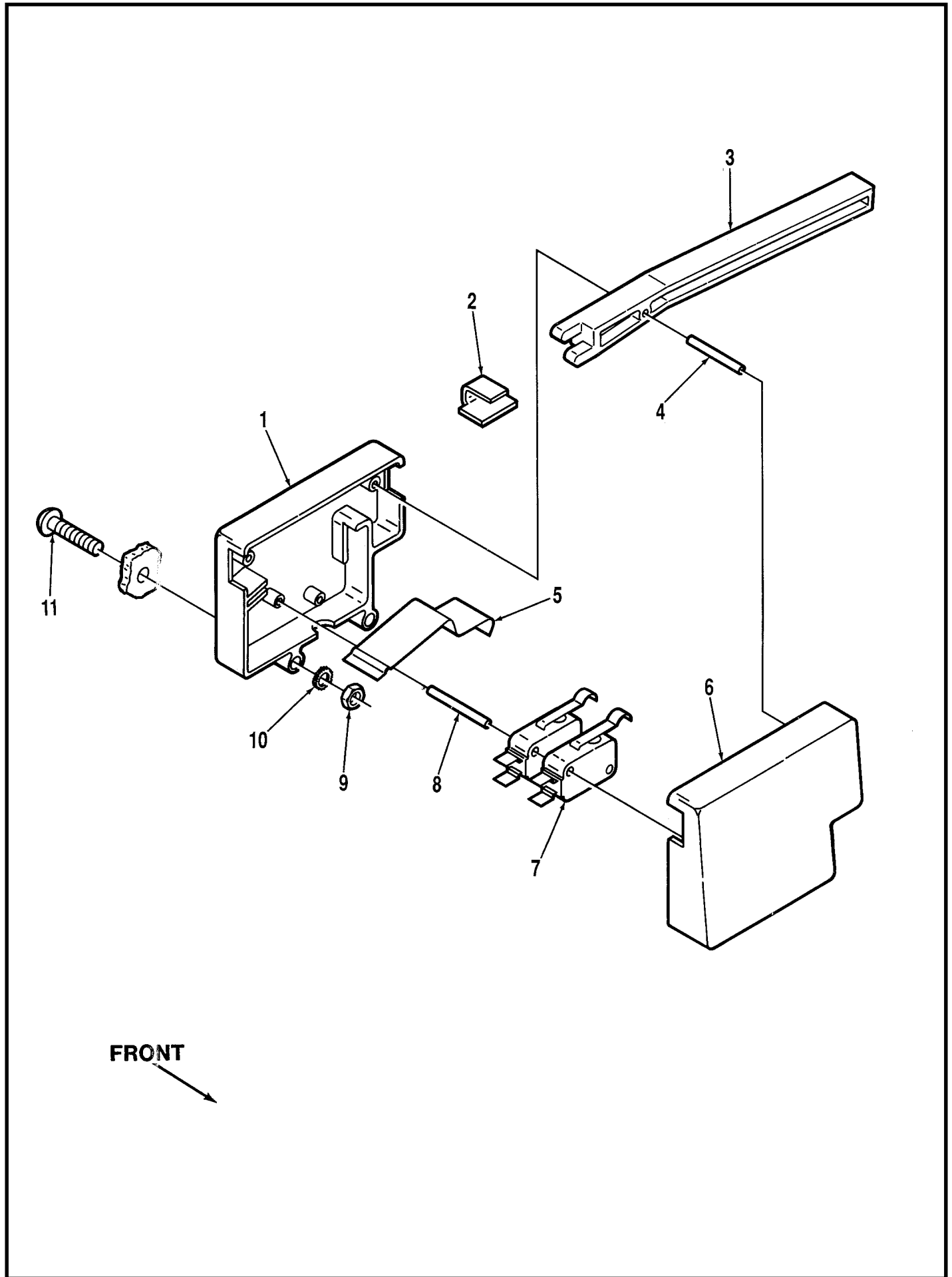
- * Use the 8 digit numbers from the "Ref. No." columns in this parts list.
- * Specify the model and serial number of the machine.
- * Use the space below to record the model and serial number for future reference.

Model _____ Serial No. _____

CHASSIS AND HANDLE

Item	Ref. No.	Qty	Description	Item	Ref. No.	Qty	Description
1	56263691	1	Membrane Switch Assembly	26	56168786	1	13A Circuit Breaker
	56263694	1	Membrane Switch	27	56329177	1	6A Circuit Breaker
	56263696	1	Bracket	28	56326512	1	2A Circuit Breaker
2	56263576	1	Handle Tube	29	56263826	3	Nut
3	56388545	2	Hand Grip	30	56180272	1	Connector TSB 741
4	56263577	1	Handle Panel	31		2	#6-32 x 1/2 Screw
5		11	#8-32 x 1/2 Screw			2	#6-32 Nut
6	56263825	2	Plug	32	56262535	1	Belt Clip
7		4	1/4-20 x 1/2 Screw	33		7	#8-32 Acorn Nut
8	56263831	1	Support	34	56015132	1	Decal, Power
9		2	1/4-20 Washer	35	56262551	1	Power Switch
*	56159387	2	Brass Nut	36	56171800	1	Wall Plate
10	56263847	1	Handle	37	56342319	1	P-Clamp
11	56015170	1	Decal, Instructions	38	56171801	1	Cord Mount
12	56263521	1	Chassis	39	56263686	1	Power Cord (w/#32 & 48)
13	56263550	1	Belt Cover	40		2	#10-24 x 3/4 Screw
14		3	#10-24 x 1/2 Screw	*	56263700	1	Main Wiring Harness
15	56014794	1	Decal, Advance	41		4	1/4-20 x 1/2 Screw
16	56263570	2	Bushing	42	56263843	11	Panel Retainer
17	56323722	4	Wheel	43	56263834	1	Muffler Housing
18		1	#8-32 Nut		56263836	1	Muffler Assembly (#20, 42-46)
19	56263702	1	Control Assembly	44	56263835	1	Foam
20	56263588	1	Bottom Cover	45	56263839	1	Foam
21	56323193	4	Nut Clamp	46	56263838	1	Foam
22		4	1/4-20 Whiz Nut	47	56014781	1	Decal, Warning
23		6	1/4-20 x 3/4 Screw	48	56180270	1	Connector
24	56263560	1	Right Bracket	49	56263836	1	Lower Panel
*	56263813	1	Left Bracket	*	56900144	1	Button Plug
25		2	1/4-20 x 2-1/2 Screw				

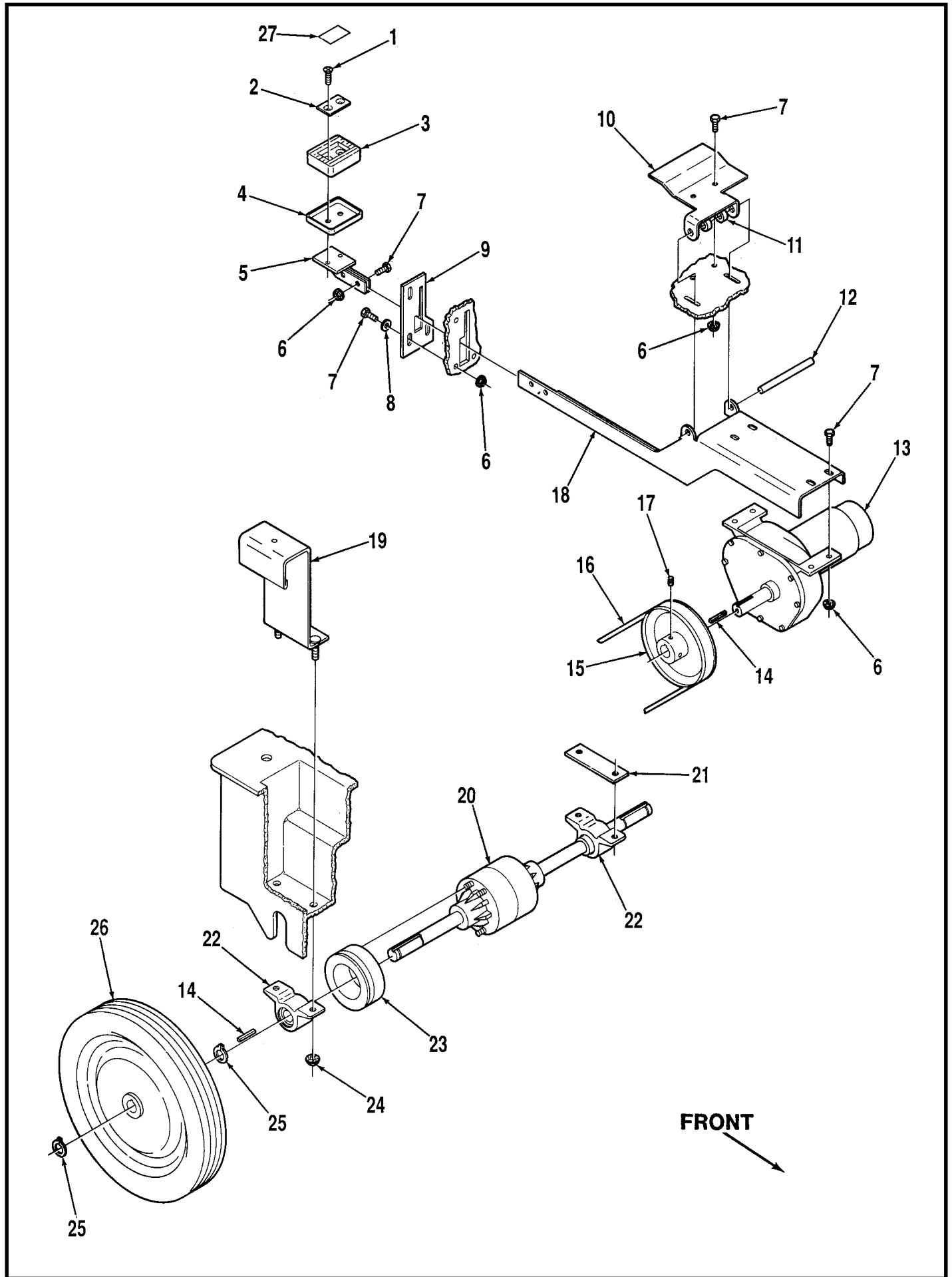
* = Not Shown



PIVOT BOX ASSEMBLY

Item	Ref. No.	Qty	Description
1	56263645	1	Pivot Box
2	56263580	1	Clip
3	56263578	2	Lever
4	56002763	2	Pin
5	56263648	1	Spring Plate
6	56263646	1	Pivot Box Cover
7	56262027	2	Switch TSB 729
8	56002765	2	Pin
9		2	#10-24 Nut
10		2	#10 Lock Washer
11		2	#10-24 x 1 Screw
*	56263557	2	Wire White/Green
*	56263817	2	Wire Red/Green

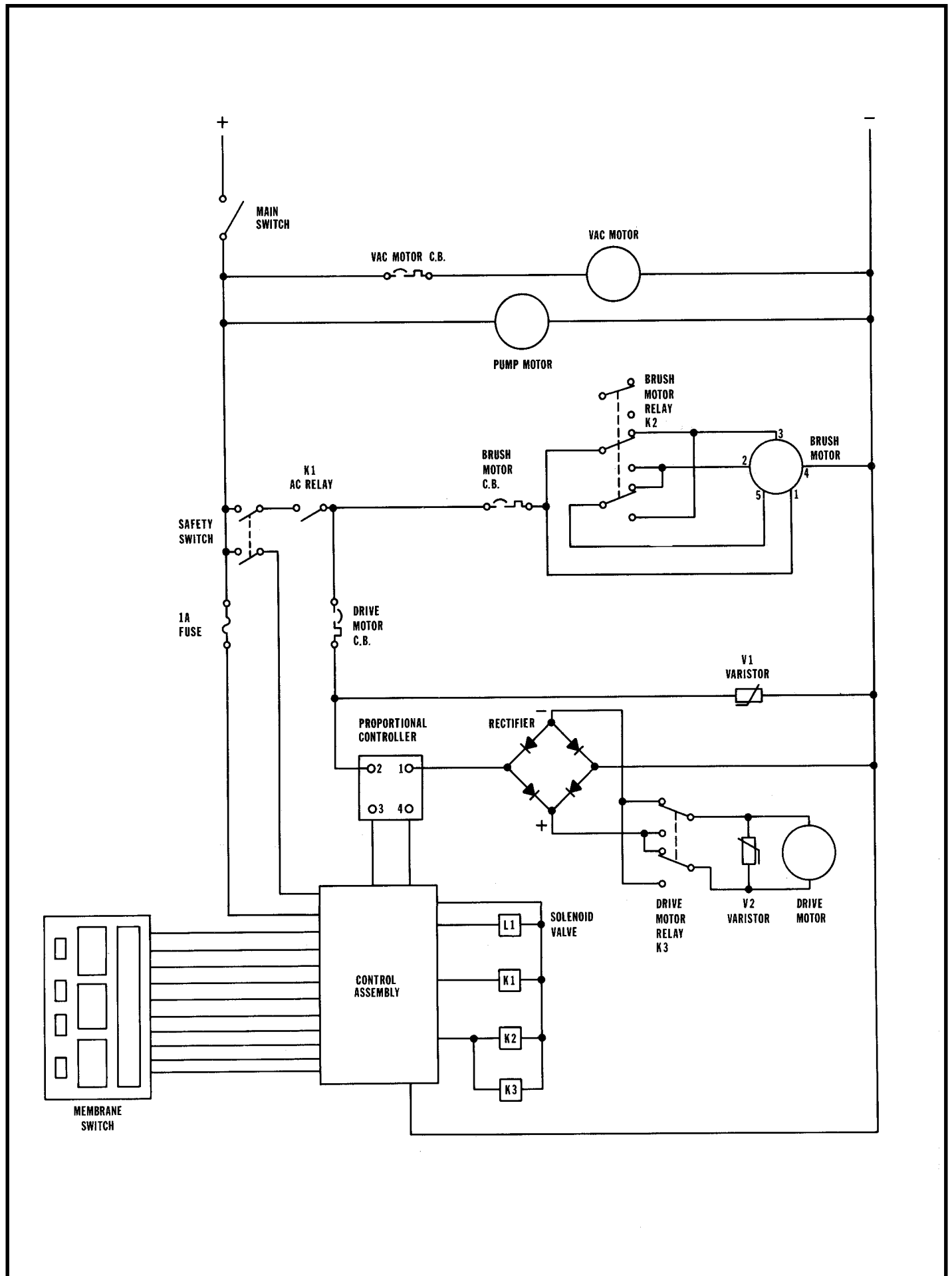
* = Not Shown



DRIVE SYSTEM

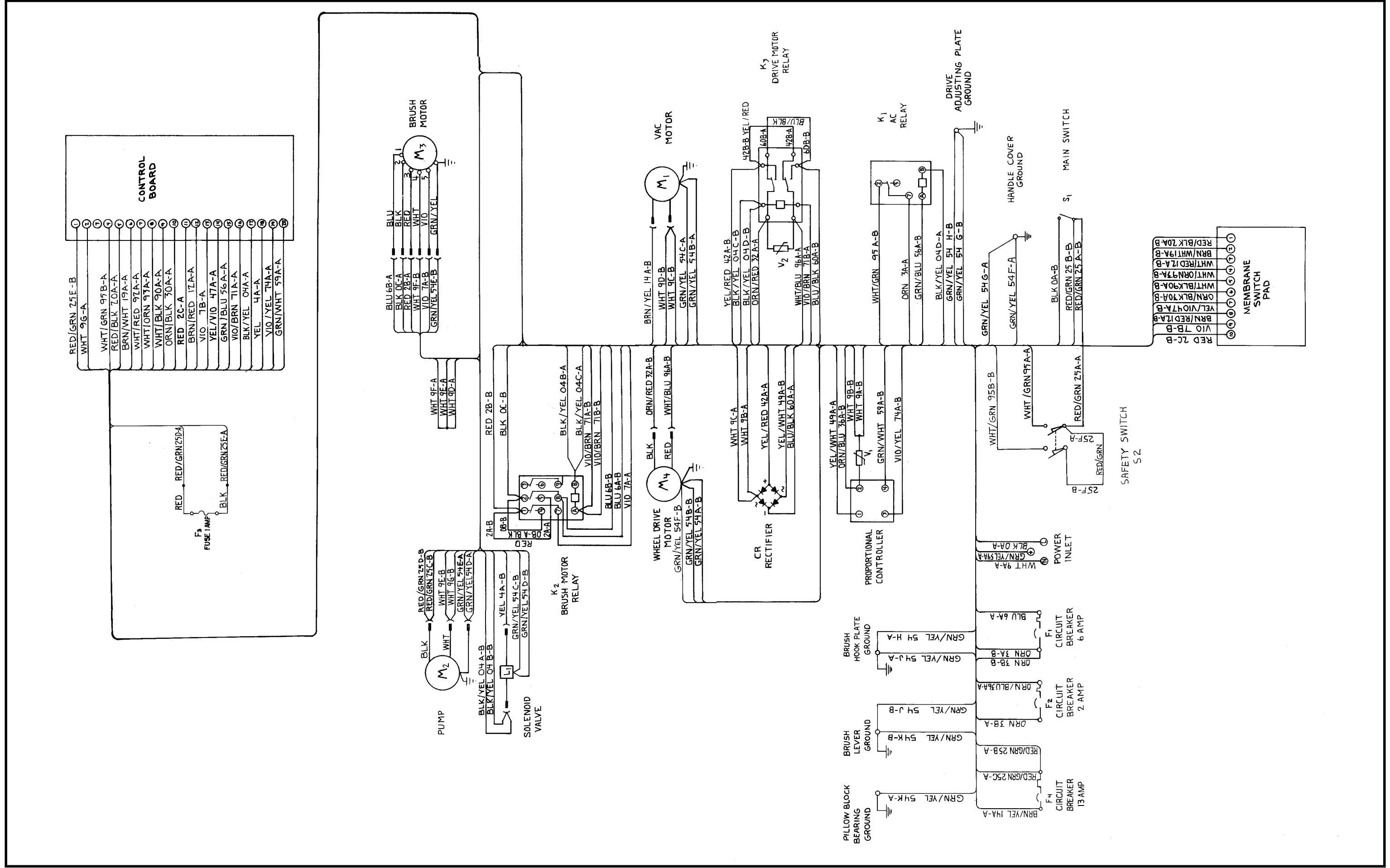
Item	Ref. No.	Qty	Description
1		2	1/4-20 x 3/4 Screw
2	56365081	1	Plate
3	56365082	1	Pad
4	56365083	1	Cup
5	56263641	1	Pedal
6		11	1/4-20 Whiz Nut
7		11	1/4-20 x 3/4 Screw
8		3	1/4 Washer
9	56263536	1	Adjusting Plate
10	56263531	1	Motor Bracket
11	56331076	2	Collar
12	56263532	1	Pin
13	56263597	1	Drive Motor
*	56263904	1	Carbon Brush and Spring Set for Drive Motor
14	56443719	3	Key
15	56263527	1	Sheave
16	56471087	1	Belt
17		2	1/4-20 x 1/2 Set Screw
18	56263540	1	Motor Mount
19	56263538	2	Bolt Anchor
20	56263537	1	Differential
21	56263827	1	Spacer
22	56263525	2	Pillow Block
23	56263533	1	Sheave
24		4	5/16-18 Whiz Nut
25	56900884	4	Retaining Ring
26	56263583	2	Wheel
27	56015175	1	Decal, Pedal

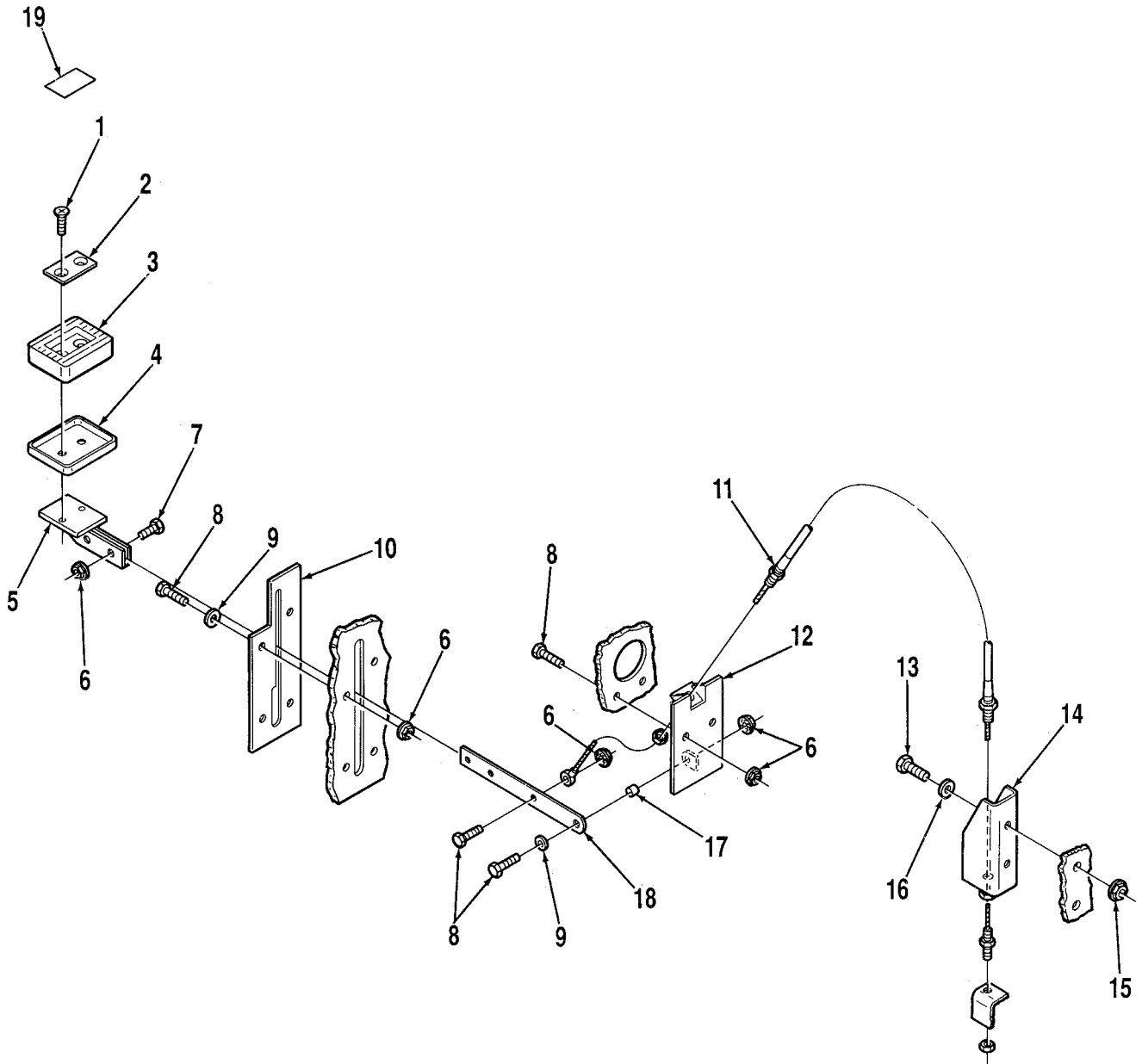
* = Not Shown



WIRING LADDER DIAGRAM

Ref. No.	Qty	Description
56262551	1	Main Switch
56168786	1	Vacuum Motor Circuit Breaker 13A
56263601	1	Vacuum Motor
56262593	1	Pump Motor
56262027	2	Safety Switch TSB 729
56263596	1	AC Relay
56329177	1	Brush Motor Circuit Breaker 6A
56263595	1	Brush Motor Relay
56263542	1	Brush Motor
56263711	1	Fuse 1A
56326512	1	Drive Motor Circuit Breaker 2A
56263592	1	Varistor
56263593	1	Proportional Controller
56180163	1	Rectifier
56263594	1	Drive Motor Relay
56755897	1	Varistor
56263597	1	Drive Motor
56263691	1	Membrane Switch
56263702	1	Control Assembly
56263604	1	Solenoid Valve
56263700	1	Main Wiring Harness

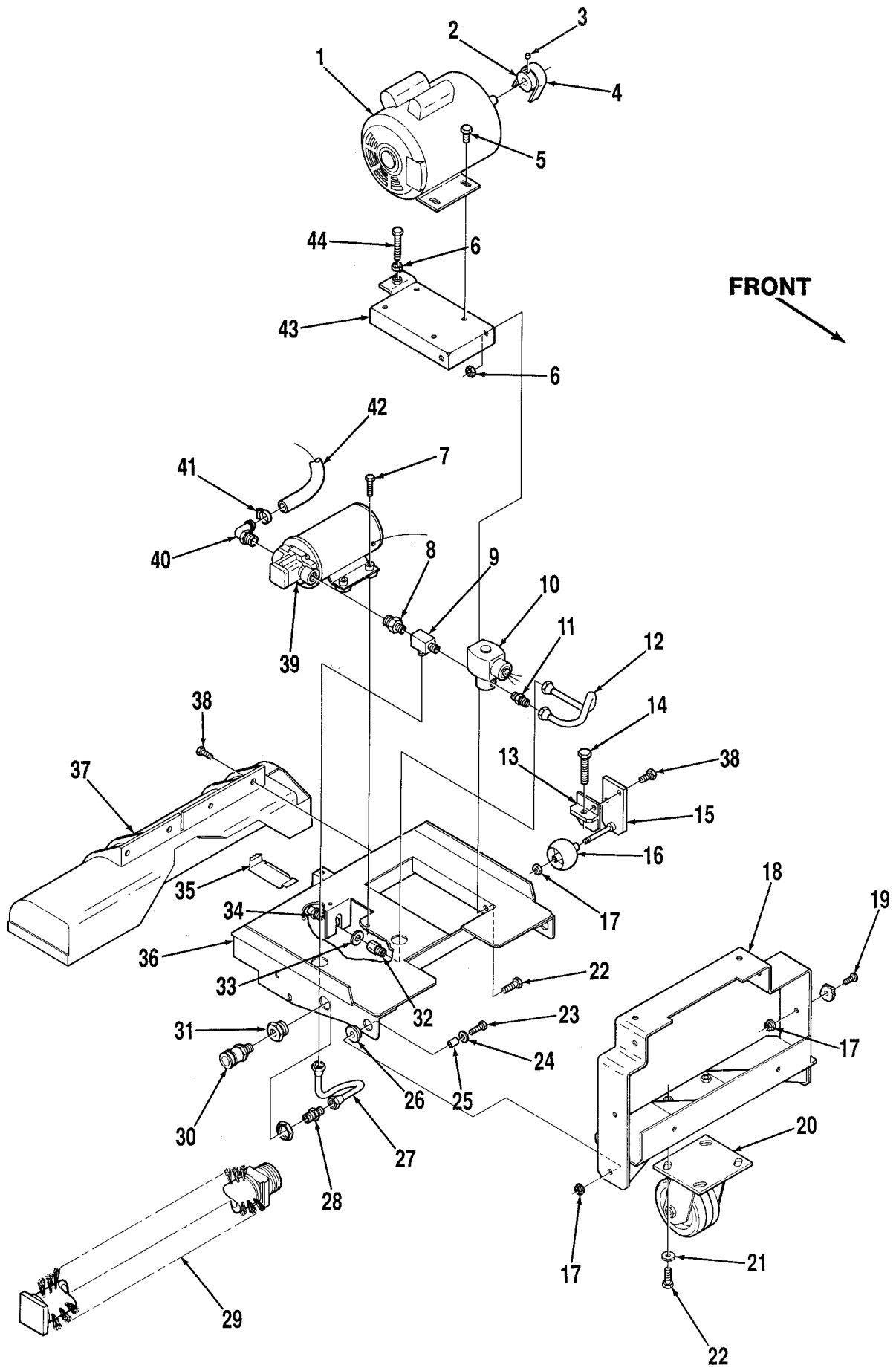




FRONT
↘

BRUSH LIFT LEVER

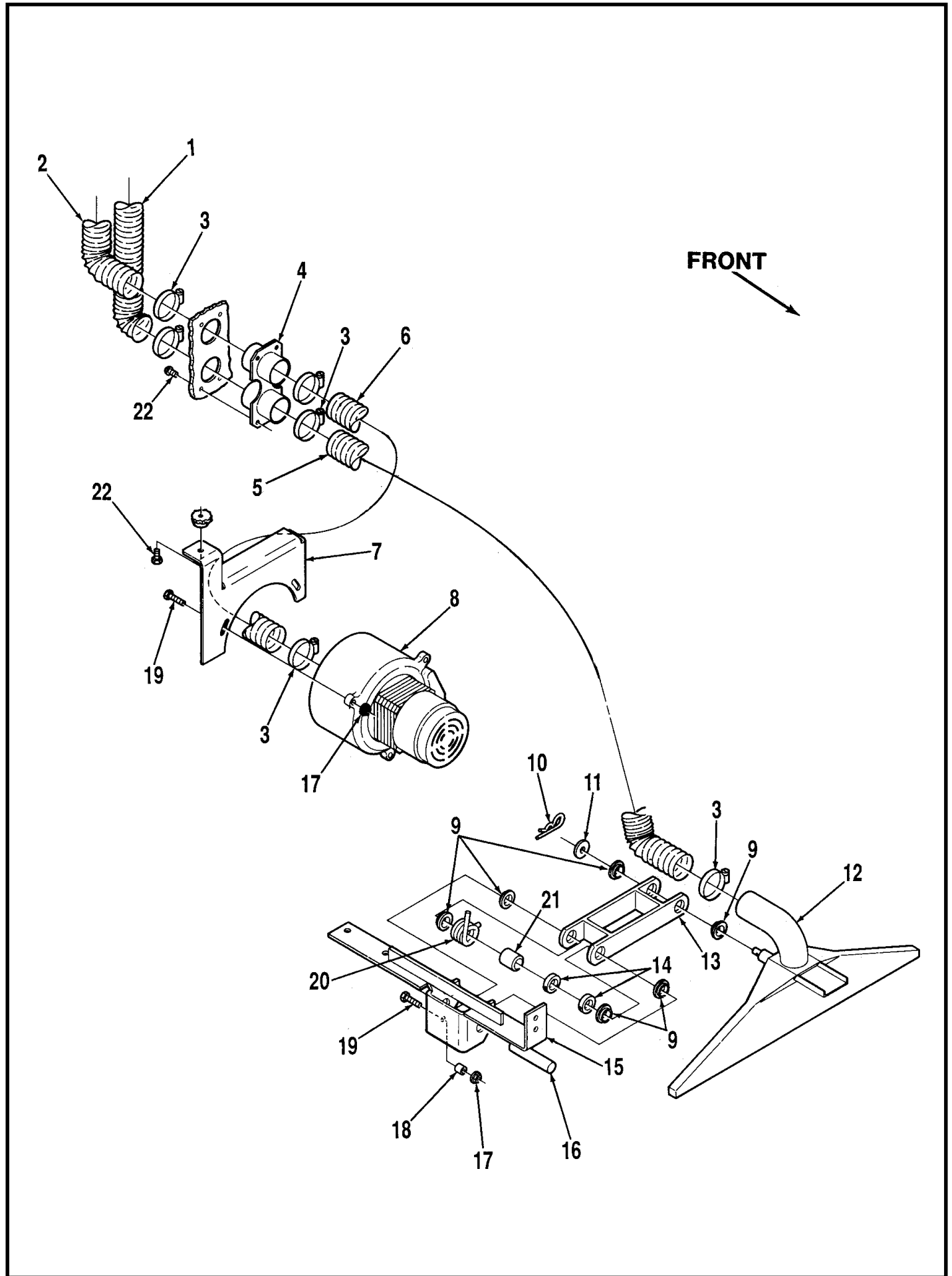
Item	Ref. No.	Qty	Description
1		2	1/4-20 x 3/4 Screw
2	56365081	1	Plate
3	56365082	1	Pad
4	56365083	1	Cup
5	56263641	1	Pedal
6		10	1/4-20 Whiz Nut
7		2	1/4-20 x 3/4 Screw
8		10	1/4-20 x 1 Screw
9		5	1/4 Washer
10	56263708	1	Plate
11	56263640	1	Cable w/Nuts
12	56263639	1	Pivot Bracket
13		2	5/16-18 x 1 Bolt
14	56263638	1	Bracket
15		2	5/16-18 Whiz Nut
16		2	5/16 Washer
17	56379298	1	Bushing
18	56263632	1	Arm
19	56015174	1	Decal, Pedal



BRUSH MOTOR & PUMP

Item	Ref. No.	Qty	Description	Item	Ref. No.	Qty	Description
1	56263542	1	Brush Motor TSB 588	27	56263568	1	Tube
2	56263544	1	Sheave	28	56263556	1	Adapter
3		1	1/4-20 x 1/4 Set Screw	29	56263548	1	Brush Assembly
4	56263676	1	Belt	*	56262559	1	Sheave
5		4	5/16-18 x 3/4 Bolt	*	56262625	1	Right Bearing Block
6		3	5/16-18 Nut	*	56262624	1	Left Bearing Block
7		4	#10-24 x 1-1/4 Screw	*	56262626	1	Right Bearing
8	56263810	1	Reducer	*	56372773	1	Left Bearing
9	56263552	1	Tee	30	56249568	1	Quick Disconnect
10	56100039	1	Solenoid Valve	31	56745543	1	Bulkhead Adapter w/Nut
11	56263553	1	Adapter	32	56263551	1	Adapter
12	56263569	1	Tube	33		2	7/16 Washer
13	56263822	2	Lift Bracket	34	56250042	1	Nozzle
14		2	3/8-16 x 2 Bolt	35	56262600	1	Guard
15	56263097	2	Axle	36	56263609	1	Brush Bracket
16	56323025	2	Wheel	37	56263555	1	Brush Housing
17		8	1/4-20 Nut	38		8	1/4-20 x 3/4 Screw
18	56263617	1	Pivot Bracket	39	56262593	1	Pump
19		4	1/4-20 x 3/4 Screw	40	56900069	1	Elbow
20	56365629	1	Caster	41	56219932	2	Hose Clamp
21		4	5/16 Washer	42	56263673	1	Solution Hose
22		4	5/16-18 x 1 Bolt	43	56263543	1	Motor Mount
23		2	1/4-20 x 1 Screw	44		1	5/16-18 x 2 Bolt
24		2	1/4 Washer				
25	56244941	2	Bushing				
26	56261145	2	Bearing				

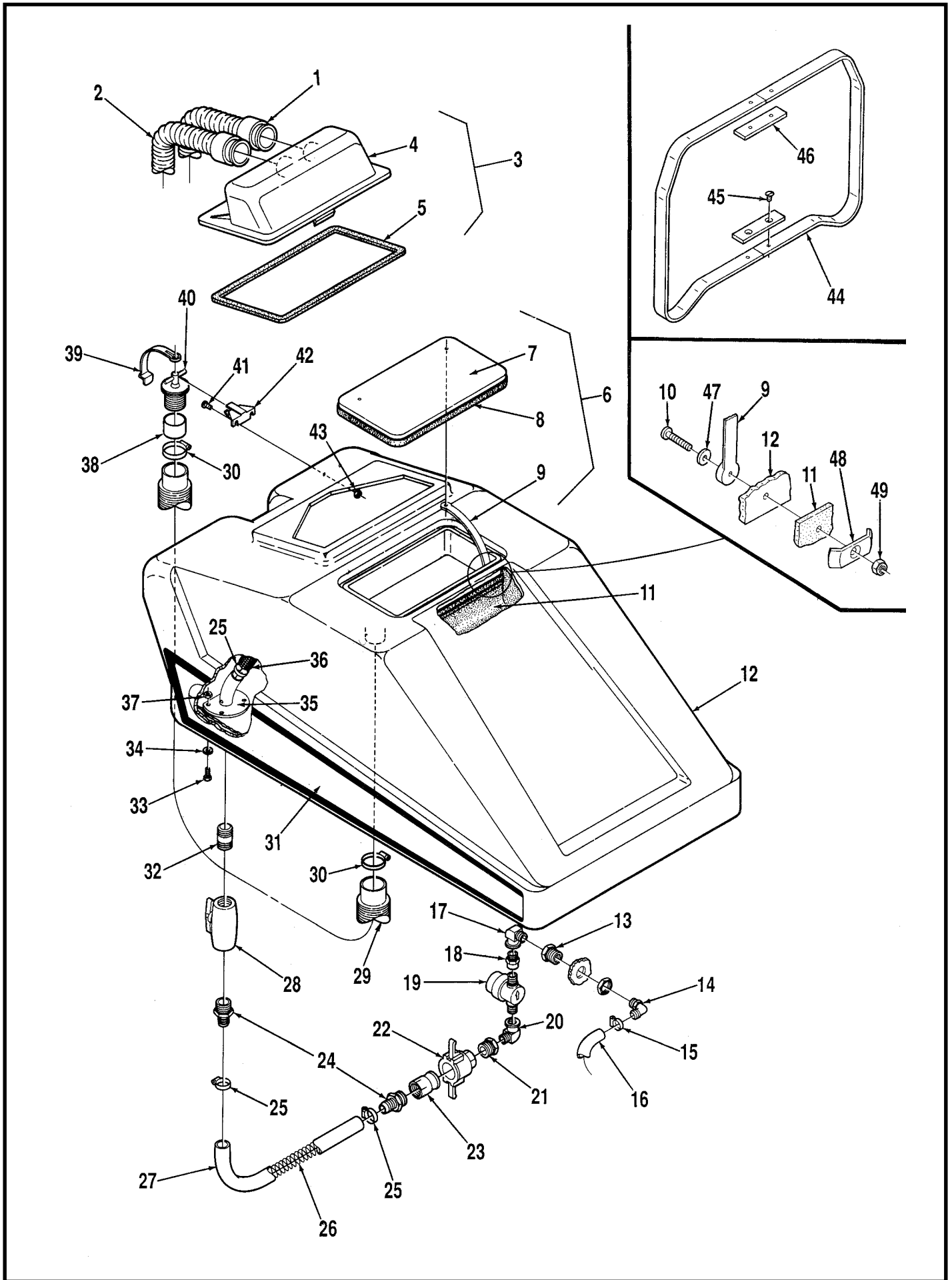
* = Not Shown



VACUUM MOTOR & PICK-UP TOOL

Item	Ref. No.	Qty	Description
1	56263591	1	Recovery Hose
2	56263671	1	Vacuum Hose
3	56329145	6	Hose Clamp
4	56263627	1	Hose Adapter
5	56263670	1	Recovery Hose
6	56263631	1	Vacuum Hose
7	56263562	1	Motor Mount
8	56262584	1	Vacuum Motor
*	56260950	1	Carbon Brush Set for Vacuum Motor
	56263649	1	Pick-Up Tool Assembly (#9-21)
9	56100084	6	Bearing
10	56321406	1	Cotter Hair Pin
11	56180200	1	Washer
12	56263566	1	Pickup Tool
13	56263564	1	Bracket
14	56449228	2	Collar
15	56263654	1	Pivot Bracket
16	56263652	1	Pivot Pin
17		3	1/4-20 Whiz Nut
18	56321532	1	Bushing
19		3	1/4-20 x 1 Screw
20	56263563	1	Torsion Spring
21	56263653	1	Bushing
22		5	1/4-20 x 1/2 Screw

* = Not Shown

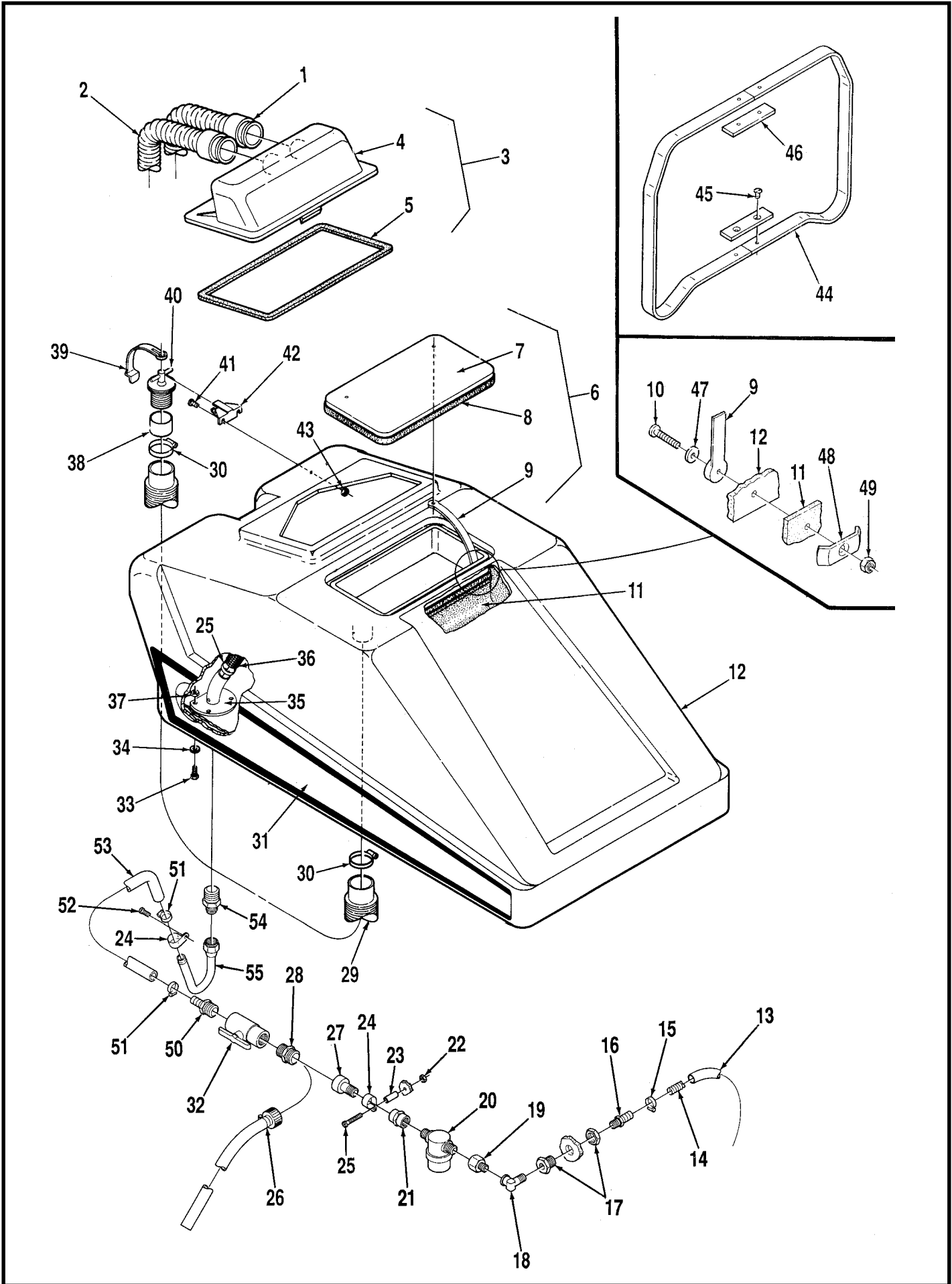


TANK ASSEMBLY (before serial number 503976)

Item	Ref. No.	Qty	Description	Item	Ref. No.	Qty	Description
1	56263591	1	Recovery Hose	32	56458433	1	Coupling
2	56263671	1	Vacuum Hose	33		4	1/4-20 x 5/8 Brass Screw
3	56262583	1	Dome Assembly (#4,5)	34	56900737	8	Sealing Washer
4	56262577	1	Cover	35	56263624	1	Tube Weldment
5	56262576	1	Gasket	*	56263848	1	Tube Gasket
6	56261391	1	Cover Assembly (#7-9)	36	56263668	1	Tube
7	56261394	1	Cover	37		4	1/4-20 Brass Nut
8	56261399	1	Gasket	38	56376940	1	Spacer
9	56263379	2	Strap	39	56261378	1	Strap
10	56376614	4	Screw	40	56376948	1	T-Plug
*		4	#10-32 x 1/2 Screw	41		2	#10-24 x 1/2 Brass Screw
11	56263606	1	Bladder	42	56386058	1	Hanger
12	56263581	1	Tank	43		2	#10-24 Brass Nut
13	56745543	1	Bulkhead Fitting w/Nut	*	56900737	2	Sealing Washer
14	56263809	1	Elbow Barb		56263840	2	Tank Support Assembly (#44-46)
15	56219932	2	Hose Clamp				
16	56263673	1	Solution Hose	44	56263841	4	Tank Support
*	56263844	4	Tube	45		8	1/4-20 x 1/2 Flat Head Screw
17	56369632	1	Elbow	46	56263842	4	Plate
18	56759072	1	Adapter	47	56249992	4	Washer
19	56260905	1	Strainer	48	56171108	4	Clamp
20	56900021	1	Elbow	49	56329606	4	Nut
21	56751686	1	Bushing				
22	56263633	1	Cam Fitting				
23	56263634	1	Groove Fitting				
24	56444006	2	Barb				
25	56112771	3	Hose Clamp				
26	56245010	1	Spring				
27	56263575	1	Solution Drain Hose				
28	56263637	1	Valve				
29	56386035	1	Recovery Drain Hose				
30	56329145	2	Hose Clamp				
31	56015036	1	Decal, Right Side				
*	56015039	1	Decal, Left Side				

* = Not Shown

Use this page for machines with serial number 503976 and before. For machines with serial number 503977 and after, see page 20.



TANK ASSEMBLY (after serial number 503977)

Item	Ref. No.	Qty	Description	Item	Ref. No.	Qty	Description
1	56263591	1	Recovery Hose	35	56263624	1	Tube Weldment
2	56263671	1	Vacuum Hose	*	56263848	1	Tube Gasket
3	56262583	1	Dome Assembly (#4,5)	36	56263668	1	Tube
4	56262577	1	Cover	37		4	1/4-20 Brass Nut
5	56262576	1	Gasket	38	56376940	1	Spacer
6	56261391	1	Cover Assembly (#7-9)	39	56261378	1	Strap
7	56261394	1	Cover	40	56376948	1	T-Plug
8	56261399	1	Gasket	41		2	#10-24 x 1/2 Brass Screw
9	56263379	2	Strap	42	56386058	1	Hanger
10	56376614	4	Screw	43		2	#10-24 Brass Nut
*		4	#10-32 x 1/2 Screw	*	56900737	2	Sealing Washer
11	56263606	1	Bladder		56263840	2	Tank Support Assembly (#44-46)
12	56263581	1	Tank				
13	56263845	1	Tube 23"	44	56263841	4	Tank Support
14	56263857	1	Tube 26"	45		8	1/4-20 x 1/2 Flat Head Screw
15	56219932	2	Hose Clamp	46	56263842	4	Plate
16	56373456	1	Barb	47	56249992	4	Washer
17	56745543	1	Bulkhead Fitting	48	56171108	4	Clamp
18	56369632	1	Elbow	49	56329606	4	Nut
19	56759072	1	Adapter	50	56118117	1	Barb
20	56260905	1	Strainer	51	56112771	2	Hose Clamp
21	56757289	1	Coupler	52		1	#10-24 x 1/2 Screw
22		2	#10-24 Lock Nut	53	56260930	1	Hose
23	56263856	1	Spacer	54	56263849	1	Adapter
24	56442003	1	P-Clamp	55	56263850	1	Tube
25		1	#10-24 x 2 Screw				
26	56263854	1	Hose Assembly				* = Not Shown
27	56263852	1	Coupler				
28	56263851	1	Adapter				
29	56386035	1	Recovery Drain Hose				
30	56329145	2	Hose Clamp				
31	56015036	1	Decal, Right Side				
*	56015039	1	Decal, Left Side				
32	56263853	1	Valve				
33		4	1/4-20 x 5/8 Brass Screw				
34	56900737	8	Sealing Washer				

Use this page for machines with serial number 503977 and after. For machines with serial number 503976 and before, see page 18.



Nilfisk-Advance, Inc.
14600 21st Avenue North
Plymouth, MN, 55447-3408
www.nilfisk-advance.com
Phone: 800-989-2235
Fax: 800-989-6566
©2000 Nilfisk-Advance, Inc.,
Plymouth, MN 55447-3408
Printed in the U.S.A.