



Electronic Service Manuals

This electronic document is provided as a service to our customers. We do not create the contents of the information contained in this document. Should you have detailed questions pertaining to the information contained in this document, you may contact Michco, or the manufacturer which provided the original information in this electronic deliverable. Michco's only part in this electronic deliverable was the electronic assembly process.

You may contact Michco through the following methods:
Phone (517) 484-9312 or (800) 331-3339 MI, OH, IN only
2011 N. High St. -- Lansing, Michigan -- 48906
Fax: (517) 484-9836
Email: CustServ@Michco.com
Web site: www.Michco.Com
Parts Web site: www.FloorMachineParts.Com

Order Parts on Line at:
www.FloorMachineParts.Com

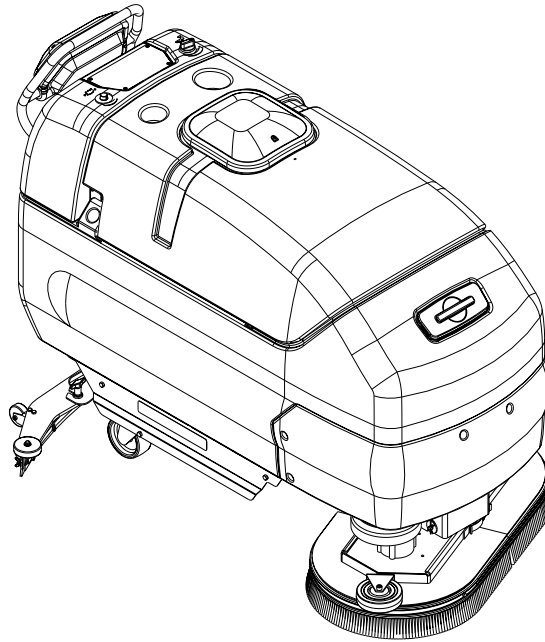
Directly to Parts & Service:
By Email: **Shop@Michco.com**
By Fax: (517) 702-2041
By Voice: Use numbers above.

Serving the Cleaning Industry Since 1922

Notice: All copyrighted material remains property of original owners, all trademarks are property of respective owners. Manuals are subject to Manufacturer's reproduction limitations. Originals or reproductions were provided by manufacturers through a request. We make no warranty as to the correctness of information provided in this document and you assume all risk.

ConvertaMAX™ 34

I-MAX™ 34HD



PARTS LIST

Advance MODELS 56397200, 56397201

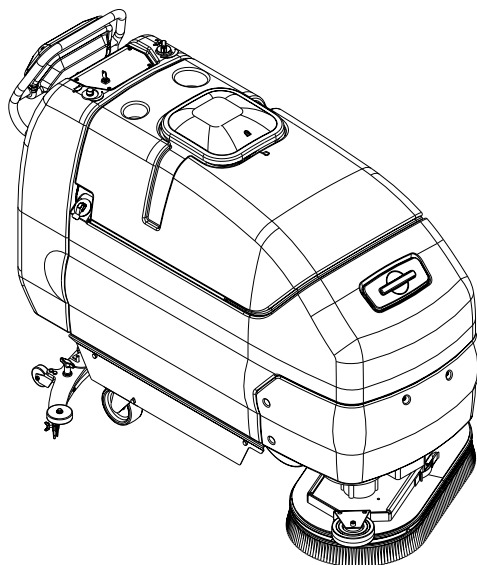
All models covered in this manual are OBSOLETE.

ConvertaMAX 34 before SN1593244 / I-MAX 34HD before SN1593246



Advance
by Nilfisk-Advance

3/00 revised 9/02 FORM NO. 56042398

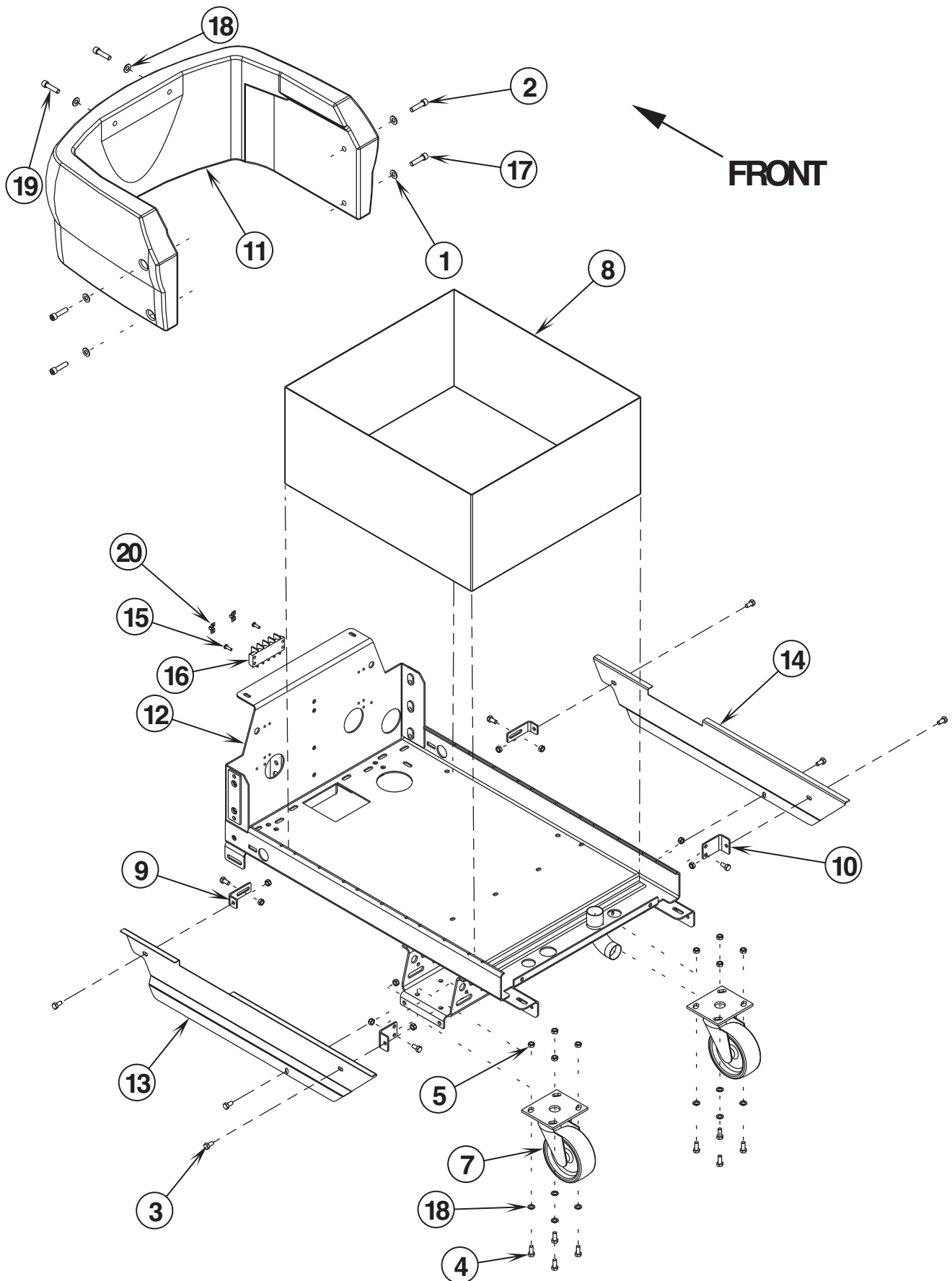


<u>DESCRIPTION</u>	<u>PAGE</u>
CONVERTAMAX™ 34 CHASSIS SYSTEM	2-3
I-MAX™ 34HD CHASSIS SYSTEM	4-5
CONTROL HANDLE SYSTEM	6-7
HANDLE PADDLE ASSEMBLY	8-9
DRIVE WHEEL SYSTEM	10-11
SCRUB SYSTEM	12-13
SKIRT ASSEMBLIES	14-15
SOLUTION SYSTEM	16-17
RECOVERY SYSTEM	18-19
SQUEEGEE SYSTEM (before SN 1477842)	20-21
SQUEEGEE ASSEMBLY (before SN 1477842)	22-23
SQUEEGEE SYSTEM (after SN 1477841)	24-25
SQUEEGEE ASSEMBLY (after SN 1477841)	26-27
DECAL SYSTEM	28-29
WIRING DIAGRAM	30-31

WHEN ORDERING PARTS

- * Use the 8 digit numbers from the "Ref. No." columns in this parts list.
- * Specify the model and serial number of the machine.
- * Use the space below to record the model and serial number for future reference.

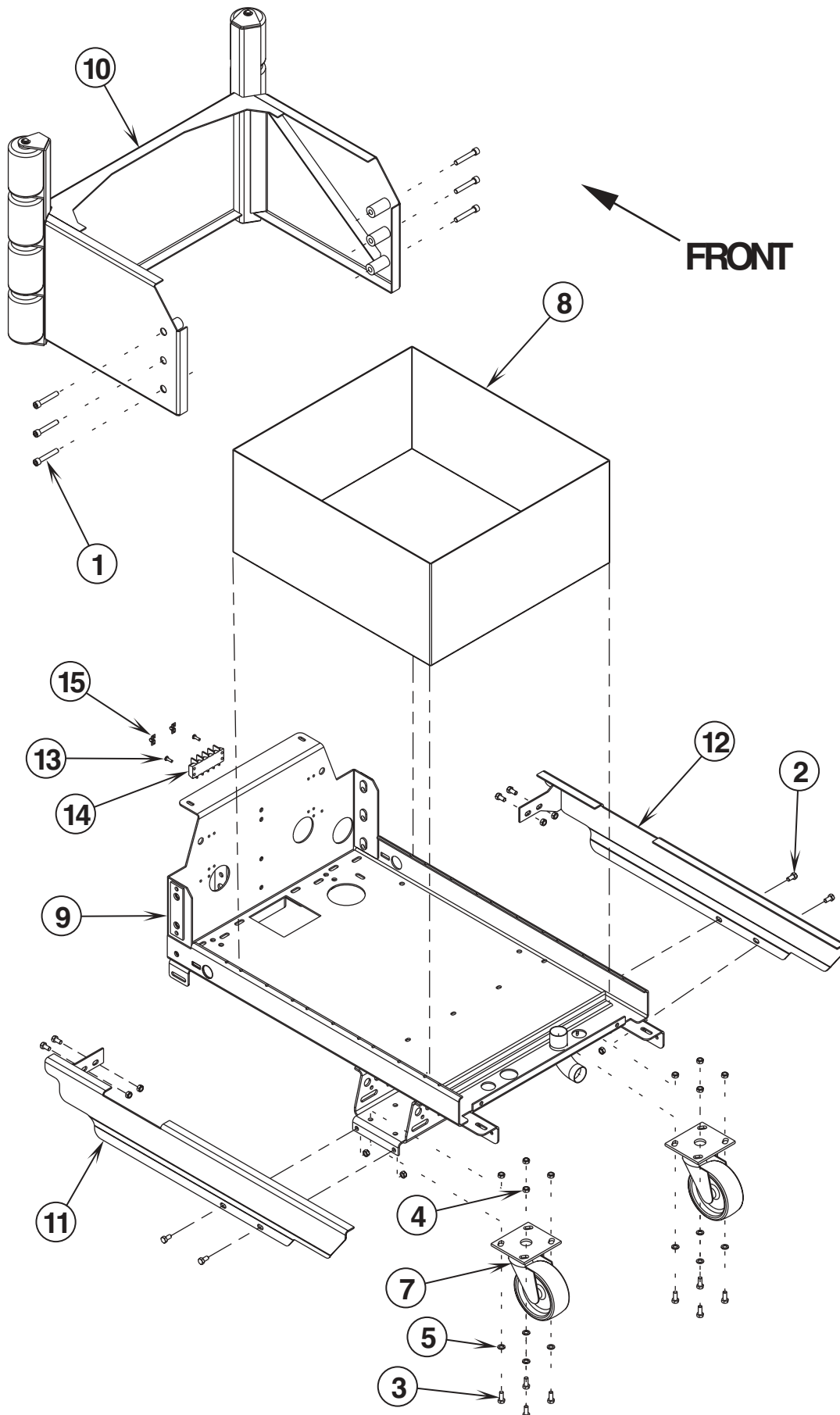
Model _____ Serial No. _____



00-3	ConvertaMAX™ 34 CHASSIS SYSTEM		
00-10	ConvertaMAX™ 34 / I-MAX™ 34HD		3

Item	Ref. No.	Qty	Description
1	56002063	4	Wsh, Flt SAE 3/8
2	56002316	2	Scr, Soc Hd 3/8-16 x 1.50
3	56003178	10	Scr, Hex M8-1.25 x 16mm
4	56003179	8	Scr, Hex Thd To Hd M8-1.25 x 20mm
5	56003389	18	Nut, Hex Nyl Loc M8-1.25
6			Intentionally Omitted
7	56440450	2	Caster, Swivel
**	56440451	2	Caster, Swivel Neoprene
8	56053534	1	Box, Batteries
9	56396116	2	Clip, Slotted
10	56396117	2	Clip
11	56397221	1	Cover, Front
12	56397234	1	Upper Chassis Weld't
13	56397281	1	Skirt, LH
14	56397282	1	Skirt, RH
15	56009042	2	Scr, Pan Phil Thd Form 10-24 x .62
16	56026111	1	Term. Block, 4 Term. 50 Amp
17	56002133	2	Scr, Soc Hd 3/8-16 x 2.00
18	56001939	10	Wsh, Flt SAE 5/16
19	56002201	2	Scr, Soc Hd 5/16-18 x 1.50
20	56397184	2	Plate, Jumper

** = Optional



00-3	I-MAX™ 34HD CHASSIS SYSTEM		
01-6	ConvertaMAX™ 34 / I-MAX™ 34HD		5

Item	Ref. No.	Qty	Description
1	56002134	6	Scr, Soc Hd 3/8-16 x 2.25
2	56003178	8	Scr, Hex M8-1.25 x 16mm
3	56003179	8	Scr, Hex Thd To Hd M8-1.25 x 20mm
4	56003389	16	Nut, Hex Nyl Loc M8-1.25
5	56001939	8	Wsh, Flt SAE 5/16
6			Intentionally Omitted
7	56440450	2	Caster, Swivel
**	56440451	2	Caster, Swivel Neoprene
8	56053534	1	Box, Batteries
9	56397234	1	Upper Chassis Weld't
10	56397239	1	Assembly, Bumper Industrial
*	56397245	1	Weldment, Bumper Industrial
*	56392809	2	Rod
*	56392102	8	Roller
*	56009097	2	Nut, Push Cap 1/2
*	56003264	2	Ring, Ret Ext Type E .50 Dia
11	56397262	1	Left Side Weld't
12	56397264	1	Right Side Weld't
13	56009042	2	Scr, Pan Phil Thd Form 10-24 x .62
14	56026111	1	Term. Block, 4 Term. 50 Amp
15	56397184	2	Plate, Jumper
**	56397368	1	Industrial Side Panel Kit

* = Not Shown

** = Optional

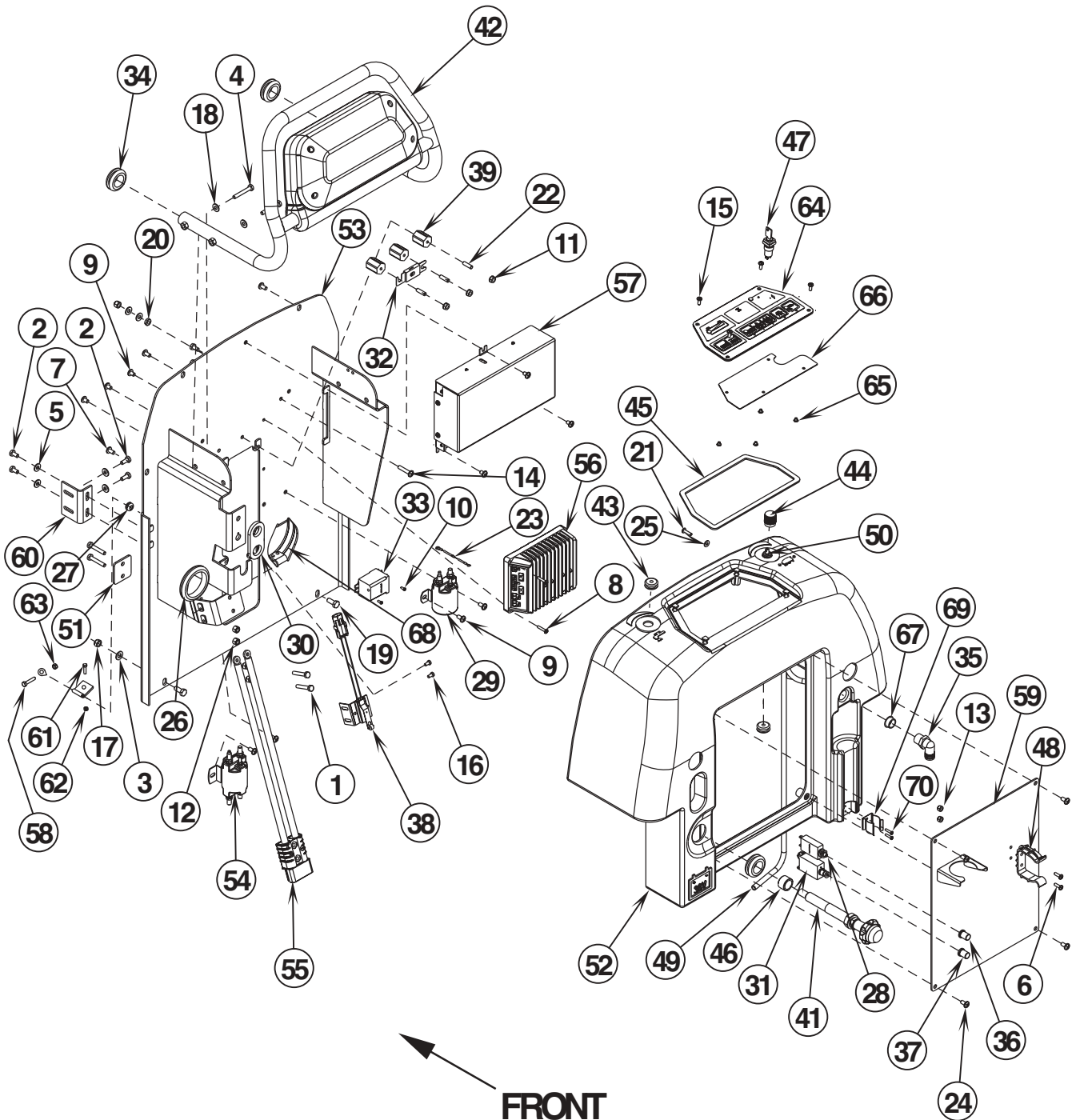
CONTROL HANDLE SYSTEM

00-3

6

ConvertaMAX™ 34 / I-MAX™ 34HD

02-3



00-3	CONTROL HANDLE SYSTEM			
02-3	ConvertaMAX™ 34 / I-MAX™ 34HD			7

Item	Ref. No.	Qty	Description	Item	Ref. No.	Qty	Description
1	56001833	4	Scr, Hex Hd 1/4-20 x 1.50	42	56396147	1	Paddle, Handle Assy (see associated pages)
2	56001836	8	Scr, Hex Hd 1/4-20 x .62	43	56396149	1	Grommet
3	56001939	2	Wsh, Flt SAE 5/16	44	56056596	1	Knob
4	56001967	4	Scr, Hex Hd 1/4-20 x 1.75	45	56396151	1	Gasket
5	56002098	10	Wsh, Flt SAE 1/4	46	56396177	1	Spacer
6	56002124	2	Scr, Pan Phil 10-24 x .62	47	56396188	1	Switch, Key
7	56002145	4	Scr, Pan Phil 1/4-20 x .50	*	56396189	A/R	Replacement Key
8	56001860	2	Scr, Pan Phil 8-32 x .75	48	56396199	1	Clamp, Plastic
9	56002462	10	Scr, Pan Phil 1/4-20 x .38	49	56396204	1	Hose, PVC 1/4 x 3/8 x 48
10	56002539	2	Scr, Pan Phil Thd Form 6-32 x .31	50	56396197	1	Potentiometer, 100K (Speed Control)
11	56002561	3	Nut, Hex W/SHPRF 1/4-20	51	56397189	1	Spacer
12	56002708	4	Nut, Hex Nyl Loc 1/4-20	52	56397222	1	Cover, Rear
13	56002768	2	Nut, Hex Nyl Loc 10-24	53	56397232	1	Weldment, Back Panel
14	56002825	1	Scr, Pan Phil 1/4-20 x 1.25	54	56397250	1	Solenoid, SPDT 36V (Brush Motor)
15	56002831	4	Scr, Pan Phil Blk 10-24 x .50	55	56397251	1	Assy, Charger Plug
16	56002834	2	Scr, Hex Hd 10-24 x .38	56	56397252	1	Controller, 36V
17	56002851	2	Nut, Hex Nyl Loc-Thin SS 5/16-18	57	56397255	1	Control Box Assy (before SN1515053) TSB 793
18	56002859	4	Wsh, Flt SAE SS 1/4				
19	56002956	2	Scr, Hex Hd Loc 5/16-18 x .75				
20	56002840	3	Nut, Hex Nyl Loc-Thin 1/4-20	56397211	1	Control Box Assy (after SN1515052) TSB 793	
21	56009005	1	Scr, Pan Phil SS Type B 10-16 x .75				
22	56009203	3	Stud, 1/4-20	58	56003174	1	Scr, Hex Thd To Hd M6-1.00 x 16mm
23	56389265	2	Rectifier	59	56397283	1	Weldment, Panel Rear
24	56009069	4	Scr, Pan Phil Loc 1/4-20 x .50	60	56397291	2	Bracket
25	56009205	1	Wsh, Flt SS #10	61	56002503	1	Scr, Hex 10-24 x .50
26	56262531	1	Grommet	62	56002832	1	Nut, Hex Nyl Loc-Thin 10-24
27	56321958	1	Grommet	63	56003403	1	Nut, Hex Nyl Loc M6-1.00
28	56387316	1	Circuit Breaker, 10 Amp (Control Circuit)	64	56397259	1	Display Panel Assembly
29	56395450	1	Contact, 36V (Vac Motor)	65	56009055	4	Scr, Pan Phil 8-32 x .19
30	56407193	1	Gasket	66	56397260	1	Display PCB Assy
31	56452193	1	Circuit Breaker, 40 Amp (Wheel Drive)	67	56900041	1	Plug, Cap
32	56412089	1	Fuse, 150 Amp	*	56478246	12	Cable Tie
33	56416157	1	Relay, SPST (Brush Remove)	68	56478523	2	Tie, Cable
34	56418199	3	Grommet	69	56396252	1	Spring Clip
35	56456802	1	Barb, 90 Elbow 11/16 x 3/4NPT	70	56003197	2	Scr, Pan Phil Plastite 6-18 x .62
36	56459367	1	Boot, Reset Button				
37	56459368	1	Boot, Reset Button				
38	56462362	1	Switch Assy N.C. (Charger Interlock)				
39	56469858	3	Electrical Mount				
40			Intentionally Omitted				
41	56056323	1	Cable, Brake Assy.				

* = Not Shown

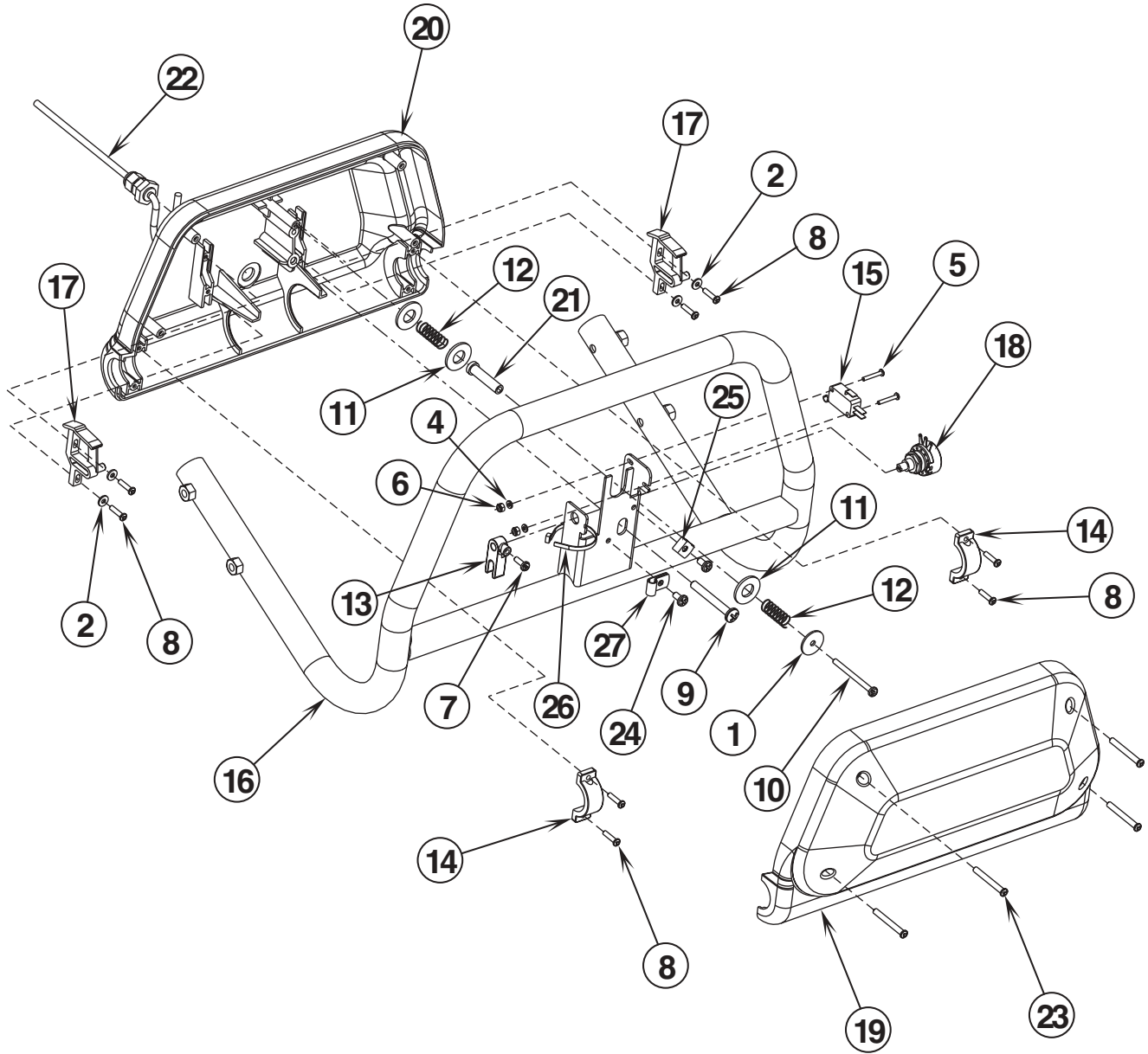
HANDLE PADDLE ASSEMBLY

00-3

8

ConvertaMAX™ 34 / I-MAX™ 34HD

02-3



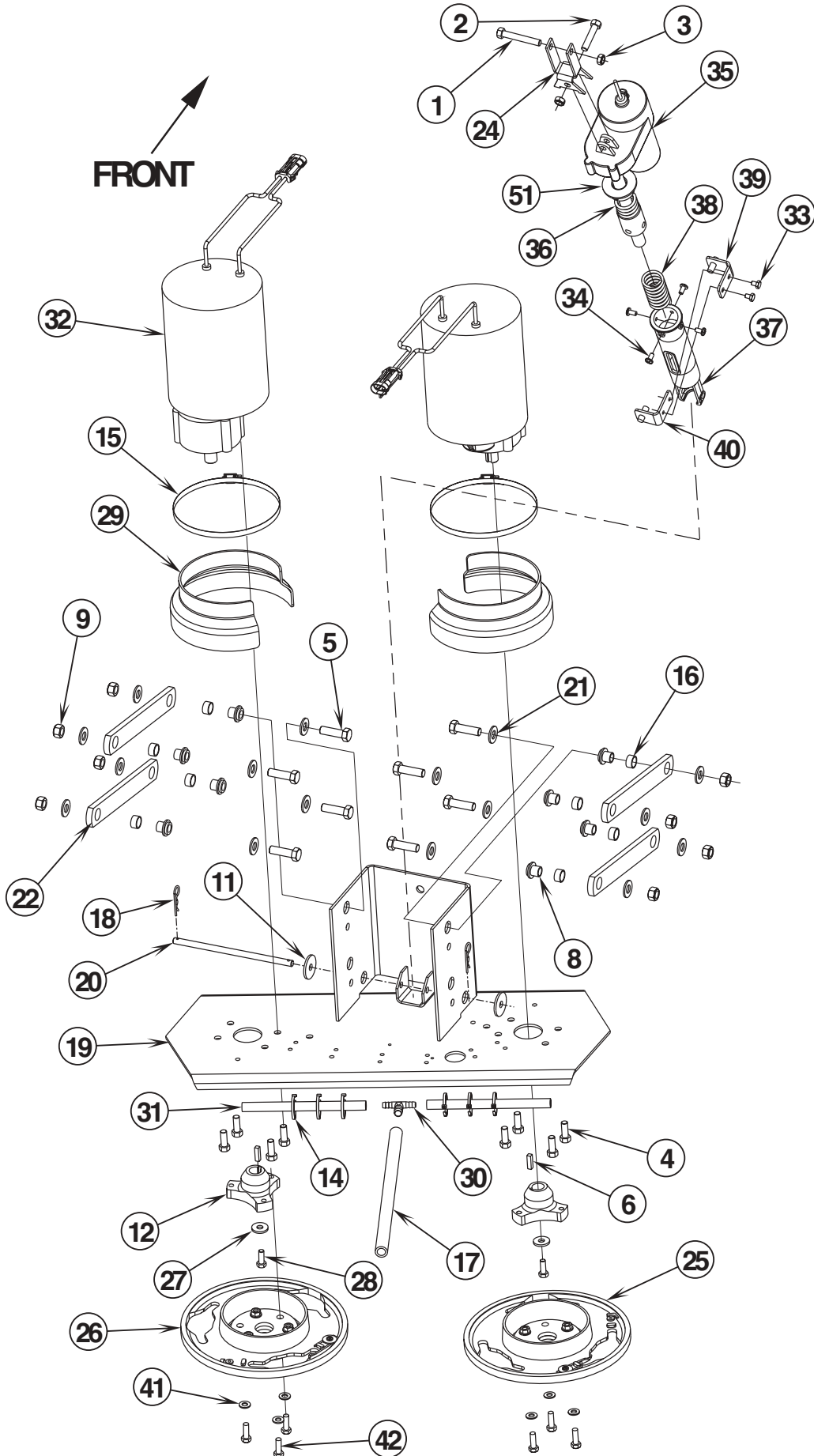
00-3	HANDLE PADDLE ASSEMBLY		
02-3	ConvertaMAX™ 34 / I-MAX™ 34HD		9

Item	Ref. No.	Qty	Description
	56396147	1	Paddle, Handle Assembly (#1-27)
1	56009096	1	Wsh, Flt .193 x .875 x .060
2	56002006	4	Wsh, Flt SAE #6
3			Intentionally Omitted
4	56002431	2	Wsh, Flt SAE #4
5	56002713	2	Scr, Pan Phil 4-40 x .75
6	56002838	2	Nut, Hex Nyl Loc 4-40
7	56003354	1	Scr, Pan Phil M4 x 12
8	56003197	8	Scr, Pan Phil Plastite 6-18 x .62
9	56003527	1	Scr, Pan Phil Plastite 1/4-10 x 2.00
10	56009287	1	Scr, Pan Phil Type B 8 x 2.00
11	56397170	3	Washer, Plastic
12	56325654	2	Spring, Compression
13	56397172	1	Potentiometer Fork
14	56397171	2	Clamp
15	56263174	1	Switch, Snap SPDT (Squeegee Reverse)
16	56396114	1	Weldment, Handle
17	56397015	2	Cam Controller
18	56397029	1	Potentiometer, 5K
19	56397030	1	Paddle, Front Molded
20	56397031	1	Paddle, Back Molded
21	56397109	1	Sleeve
22	56396192	1	Harness Assembly TSB 737
23	56003199	4	Scr, Pan Phil Plastite 8-15 x 1.50
24	56009030	2	Scr, Pan Phil Thd Form 10-24 x .38
25	56220507	1	Clamp, P
26	56478246	1	Tie, Cable
27	56481890	1	Clamp, P

00-3	DRIVE WHEEL SYSTEM			
02-3	ConvertaMAX™ 34 / I-MAX™ 34HD			11

Item	Ref. No.	Qty	Description
1	56001858	4	Scr, Hex Hd 3/8-16 x 1.25
2	56001826	2	Scr, Soc Set Loc 5/16-18 x .50
3	56002234	4	Scr, Hex Hd 3/8-16 x .62
4	56002470	1	Scr, Hex Thd To Hd 3/8-16 x 2.00
5	56002708	4	Nut, Hex Nyl Loc 1/4-20
6	56003179	4	Scr, Hex Thd To Hd M8-1.25 x 20mm
7	56003389	4	Nut, Hex Nyl Loc M8-1.25
8	56009085	1	Nut, Hex Jam 3/8-16
9	56009242	4	Wsh, Flt .406 x 1.50 x .125
10	56035088	1	Weld't, Lower Chassis
11	56035262	1	Weld't, Bracket
12	56003244	1	Key, Sq .25 x .94
13	56056245	1	Brake, Mech. Caliper
14	56056405	1	Cover, Motor
15	56396033	1	Chain, Roller
16	56396036	1	Sprocket Weld't
17	56396037	1	Wheel Assy (#21-28)
18	56396039	2	Clamp, Axle
19	56396048	4	Bushing
20	56397316	1	Motor, 36VDC, .75HP
*	56397090	1	Bearing B.E.
*	56397135	1	Bearing F.E.
*	56397048	1	Brush Board Assy, W/Springs & Brushes
*	56397138	4	Brush Spring
*	56039276	4	Brush Assy
21	56003634	6	Scr, Hex Loc 5/16-18 x 2.25
22	56003179	2	Scr Hex Thd to Hd M8-1.25 x 20MM
23	56358959	2	Washer, Flat
24	56376628	1	Wheel 10.00 x 4.00
25	56479430	2	Bearing, Ball
26	56396022	1	Sprocket
27	56396023	1	Axle
28	56396044	1	Spacer
29	56002098	2	Wsh, Flt SAE 1/4

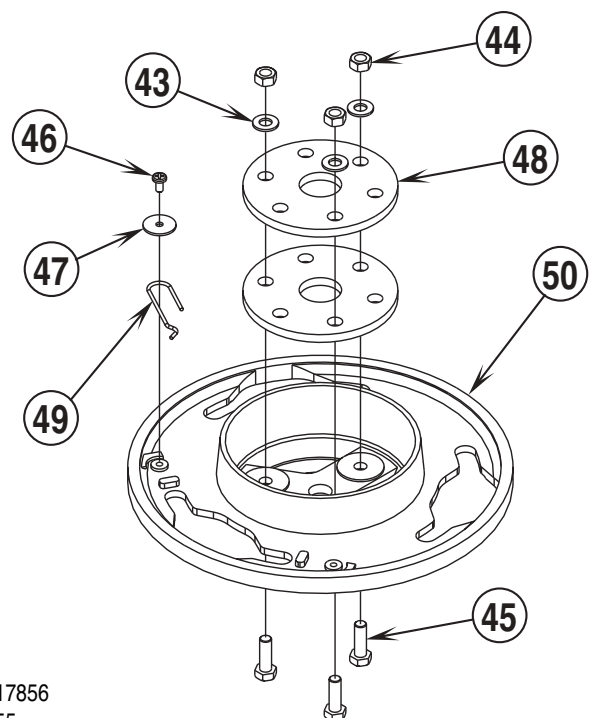
* = Not Shown



Item	Ref. No.	Qty	Description	Item	Ref. No.	Qty	Description
1	56001873	1	Scr, Hex Hd 3/8-16 x 2.50	33	56009019	2	Scr, Hex Thd Form 1/4-20 x .38
2	56002684	1	Scr, Hex Hd 3/8-16 x 1.75	34	56009062	4	Scr, Pan Phil Thd Form 1/4-20 x .50
3	56002841	2	Nut, Hex Nyl Loc-Thin 3/8-16	35	56393303	1	Actuator, Motor
4	56002947	8	Scr, Hex Hd Loc 3/8-16 x 1.00	*	56470433	1	Carbon Brush Set
5	56003637	8	Scr, Hex M12-1.75 x 40mm	*	56393790	2	Limit Switch
6	56003244	2	Key, Sq .25 x .94	*	56388520	1	Plastic Drive Nut
7			Intentionally Omitted	36	56412071	1	Compression Spring
8	56396196	8	Bushing	37	56412262	1	Housing, Spring (TSBUS2002-811)
9	56003312	8	Nut, Hex Nyl Loc M12-1.75	38	56420018	1	Compression Spring
10			Intentionally Omitted	39	56420019	1	Nut Retainer
11	56009242	2	Wsh, Flt .406 x 1.50 x .125	40	56420020	1	Nut Retainer
12	56397082	2	Hub, Drive	41	56002938	6	Wsh, Flt SAE SS 5/16
13			Intentionally Omitted	42	56003477	6	Scr, Hex Loc SS M8-1.00 x 25mm
14	56478246	6	Tie, Cable	43	56002938	3	Wsh, Flt SAE SS 5/16
15	56355488	2	Clamp, Hose SAE #96	44	56003405	3	Nut, Hex Nyl Loc SS M8 x 1.25
16	56370878	8	Bearing, Sleeve	45	56003436	3	Scr, Hex Hd SS M8-1.25 x 25mm
17	56264318	1	Hose, Spiral NOTE #1	46	56009030	1	Scr, Pan Phil Thd Form 10-24 x .38
	56172099	1	Hose, PVC Clear NOTE #2	47	56009096	1	Wsh, Flt .193 x .875 x .060
18	56003120	2	Pin, Cotter Hair .0915 x .375	48	56407053	2	Thermoid Disk
19	56035078	1	Weldment, Brush Head	49	56397081	1	Spring Retainer
20	56056474	1	Shaft, Steel	50	56397084	1	Brush Holder
21	56001879	16	Wsh, Flt SAE 1/2	51	56396268	1	Spring Housing Guide TSB 807
22	56396045	4	Arm	**	56505780	2	Pad Holder
23			Intentionally Omitted	**	56505781	2	MagnaGrit Brush
24	56396066	1	Yoke, Actuator	**	56505782	2	DynaGrit Brush
25	56396080	1	Lug, Counterclockwise (#43-50)	**	56505783	2	AgLite Grit Brush
26	56396081	1	Lug, Clockwise (#43-50)	**	56505784	2	Prolene Brush
27	56009107	2	Wsh, Flt SS .378 x 1.00 x .12	**	56505785	2	ProLite Brush
28	56003335	2	Scr, Hex Loc SS 5/16-18 x .88	**	56505786	2	Union Mix Brush
29	56397112	2	Shroud, Motor	**	56505787	2	MidGrit Brush
30	56397300	1	Tee, Barb	**	56505788	2	MidLite Brush
31	56397301	2	Hose, PVC	**	56182058	2	Lock Collar, Snap
32	56635645	2	Motor & Gear Assy, 36VDC, .75HP (ConvertaMAX™ 34)	**	56393567	2	Lock Collar, Thrd
	56397296	2	Motor & Gear Assy, 36VDC, 1.0HP (I-MAX™ 34HD)				
*	56397090	1	Bearing B.E.				
*	56397135	1	Bearing F.E.				
*	56397048	1	Brush Board Assy, W/Springs & Brushes				
*	56397138	4	Brush Spring				
*	56039276	4	Brush Assy				

* = Not Shown

** = Not Included (optional)

**NOTE #1:** ConvertaMAX™ 34 before SN1521967 / I-MAX™ 34HD before SN1517856**NOTE #2:** ConvertaMAX™ 34 after SN1521966 / I-MAX™ 34HD after SN1517855

SKIRT ASSEMBLIES

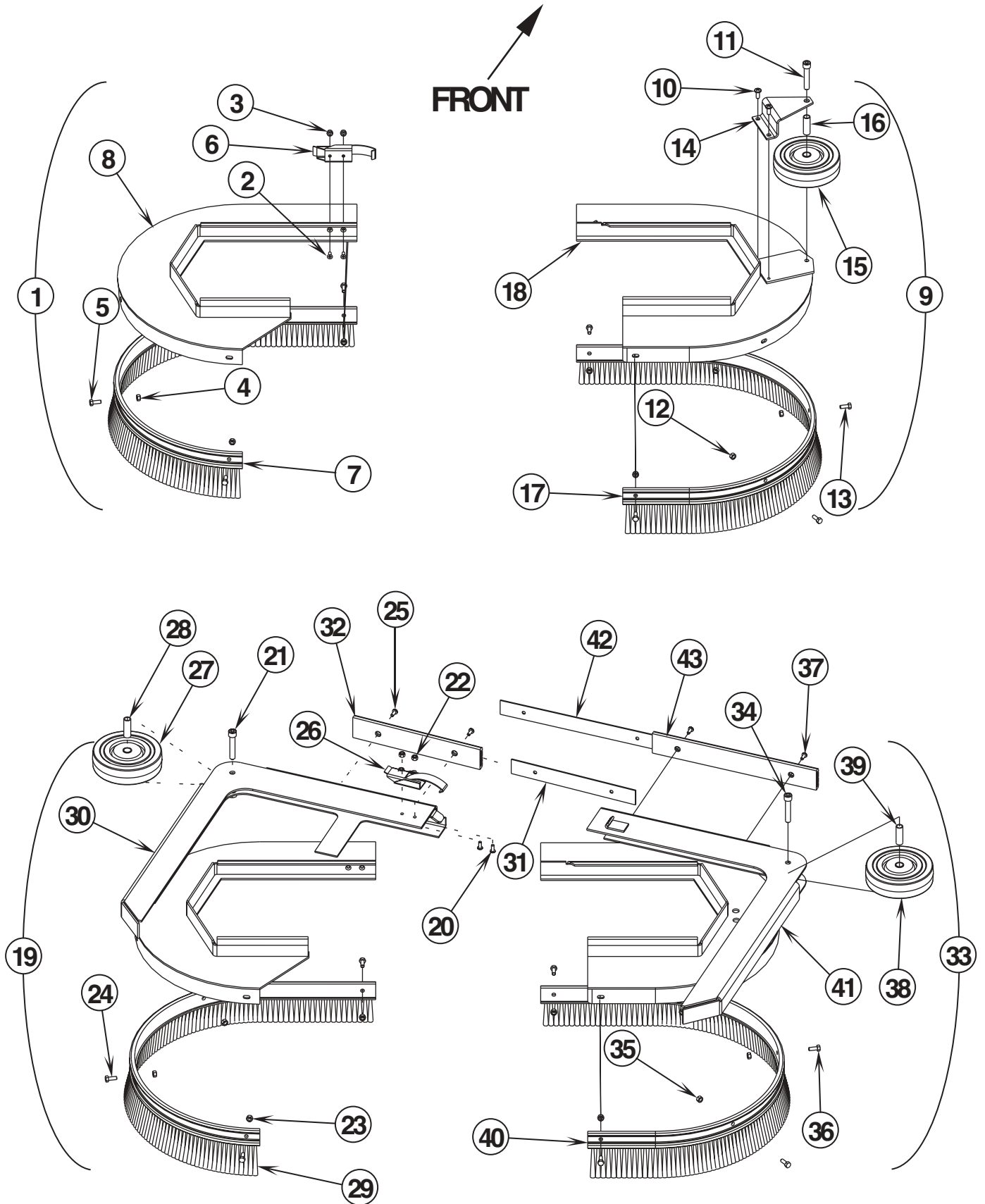
00-3

14

ConvertaMAX™ 34 / I-MAX™ 34HD

02-3

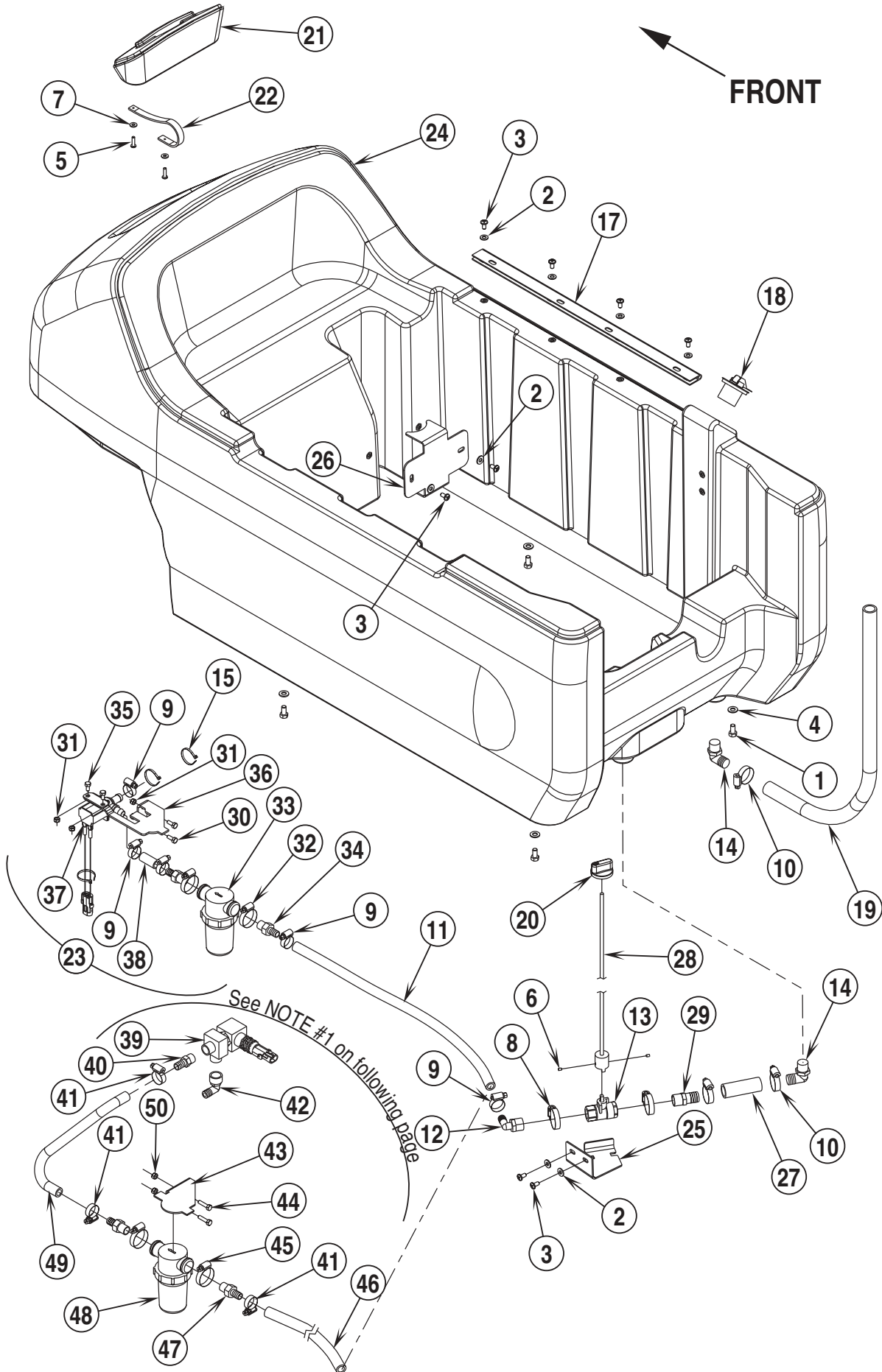
FRONT



00-3	SKIRT ASSEMBLIES			
01-2	ConvertaMAX™ 34 / I-MAX™ 34HD			15

Item	Ref. No.	Qty	Description
1	56396111	1	Assembly, Brush Cover, Left (#2-8 / ConvertaMAX™ 34)
2	56002178	2	Scr, Flt Phil 10-24 x .50
3	56002768	2	Nut, Hex Nyl Loc 10-24
4	56003426	4	Nut, Hex Nyl Loc SS M6-1.0
5	56003431	4	Scr, Hex Hd SS M6-1.0 x 16mm
6	56054306	1	Clamp, Toggle Latch
7	56396089	1	Skirt, Bristle, Left
8	56396109	1	Weld't, Brush Cover, Left
9	56396112	1	Assembly, Brush Cover, Right (#10-18 / ConvertaMAX™ 34)
10	56002066	2	Scr, Pan phil 1/4-20 x .62
11	56002133	1	Scr, Soc Hd 3/8-16 x 2.00
12	56003426	5	Nut, Hex Nyl Loc SS M6-1.0
13	56003431	5	Scr, Hex Hd SS M6-1.0 x 16mm
14	56056120	1	Bracket, Brush Head, Guide
15	56161691	1	Wheel, Black
16	56056684	1	Spacer, Steel
17	56396090	1	Skirt, Bristle, Right
18	56396110	1	Weld't, Brush Cover, Right
19	56397269	1	Assembly, Brush Cover, Left (#20-32 / I-MAX™ 34HD)
20	56001993	2	Scr, Pan Phil 10-24 x .50
21	56002133	1	Scr, Soc Hd 3/8-16 x 2.00
22	56002768	2	Nut, Hex Nyl Loc 10-24
23	56003426	4	Nut, Hex Nyl Loc SS M6-1.0
24	56003431	4	Scr, Hex Hd SS M6-1.0 x 16mm
25	56009082	2	Scr, Pan Phil Thd Form-Blk 10-24 x .50
26	56054306	1	Clamp, Toggle Latch
27	56161691	1	Wheel, Black
28	56056684	1	Spacer, Steel
29	56396089	1	Skirt, Bristle, Left
30	56397270	1	Weld't, Brush Cover, Left HD
31	56397277	1	Strap
32	56397278	1	Bumper
33	56397267	1	Assembly, Brush Cover, Right (#34-43 / I-MAX™ 34HD)
34	56002133	1	Scr, Soc Hd 3/8-16 x 2.00
35	56003426	5	Nut, Hex Nyl Loc SS M6-1.0
36	56003431	5	Scr, Hex Hd SS M6-1.0 x 16mm
37	56009082	2	Scr, Pan Phil Thd Form-Blk 10-24 x .50
38	56161691	1	Wheel, Black
39	56056684	1	Spacer, Steel
40	56396090	1	Skirt, Bristle, Right
41	56397268	1	Weld't, Brush Cover, Right HD
42	56397277	1	Strap
43	56397278	1	Bumper
**	56397080	1	Rubber Blade Kit (All models)

** = Optional



00-3	SOLUTION SYSTEM		
01-10	ConvertaMAX™ 34 / I-MAX™ 34HD		17

Item	Ref. No.	Qty	Description
1	56002035	4	Scr, Hex Hd 5/16-18 x .62
2	56002098	8	Wsh, Flt SAE 1/4
3	56002145	8	Scr, Pan Phil 1/4-20 x .50
4	56002220	4	Wsh, Flt STD 5/16
5	56009005	2	Scr, Pan Phil SS Type B 10-16 x .75
6	56009183	2	Scr, Soc Set 10-24 x .19
7	56009205	2	Wsh, Flt SS #10
8	56131601	2	Clamp, Hose SAE #16
9	56219932	5	Clamp, Hose SAE #6
10	56244969	3	Clamp, Hose SAE #12
11	56324249	1	Hose, Spiral .50
12	56409152	1	Barb, 90 Elbow 1/2 x 1/2NPT
13	56412174	1	Solution Shut-off Valve
14	56456802	2	Barb, 90 Elbow 11/16 x 3/4NPT
15	56478246	3	Tie, Cable
16	56051836	1	Hook (Not Shown)
17	56056514	1	Hinge
18	56057852	1	Plug, Expansion
19	56261265	1	Hose, .75 Clear PVC, 25.00
20	56396201	1	Knob
21	56397021	1	Lid, Solution
22	56397167	1	Strap, Retaining
23	56397214	1	Assembly, Water Valve 36V (#9, 30-38) TSB 788
24	56397220	1	Tank, Solution
25	56397276	1	Bracket, Valve
26	56397287	1	Bracket
27	56397302	1	Hose, .75 Clear PVC
28	56397311	1	Rod Weld't.
29	56900648	1	Barb, Adapter 3/4 x 1/2NPT
30	56003174	2	Scr, Hex Thd To Hd M6-1.00 x 16mm
31	56003403	4	Nut, Hex Nyl Loc M6-1.00
32	56131601	2	Clamp, Hose SAE #16
33	56412173	1	Solution Filter
34	56412184	2	Barb, Adapter 1/2 x 1/2NPT
35	56003155	2	Scr, Hex M6-1.00 x 12mm
36	56396068	1	Filter Bracket
37	56397215	1	Solenoid Valve Assy. 36V TSB 788
38	56397217	1	Hose, PVC Clear

NOTE #1

39	56409154	1	Valve, Solenoid TSB 788
*	56324506	1	Viton Seal Kit
*	56324507	1	EPDM Seal Kit
40	56409507	1	Barb, Adapter 1/2 x 3/8NPT
41	56219932	4	Clamp, Hose SAE #6
42	56900069	1	Barb, 90 Elbow 1/2 x 3/8NPT
43	56396068	1	Filter Bracket
44	56003174	2	Scr, Hex Thd To Hd M6-1.00 x 16mm
45	56131601	2	Clamp, Hose SAE #16
46	56324249	1	Hose, Spiral .50
47	56412184	2	Barb, Adapter 1/2 x 1/2NPT
48	56412173	1	Solution Filter
49	56396180	1	Hose, Spiral .50
50	56003403	2	Nut, Hex Nyl Loc M6-1.00

* = Not Shown

NOTE #1: ConvertaMAX™ 34 before SN1521967 / I-MAX™ 34HD before SN1517856

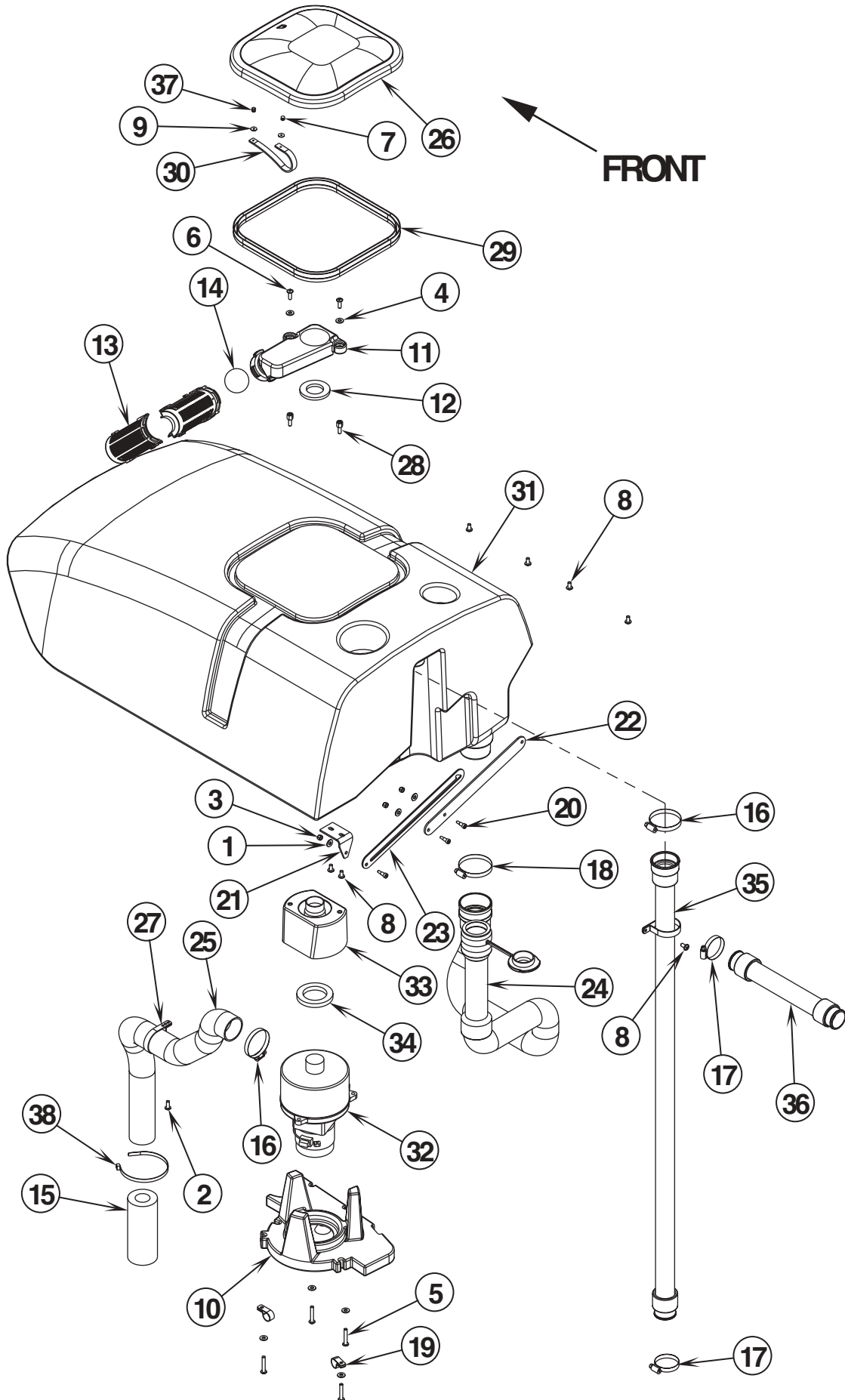
RECOVERY SYSTEM

00-3

18

ConvertaMAX™ 34 / I-MAX™ 34HD

02-3



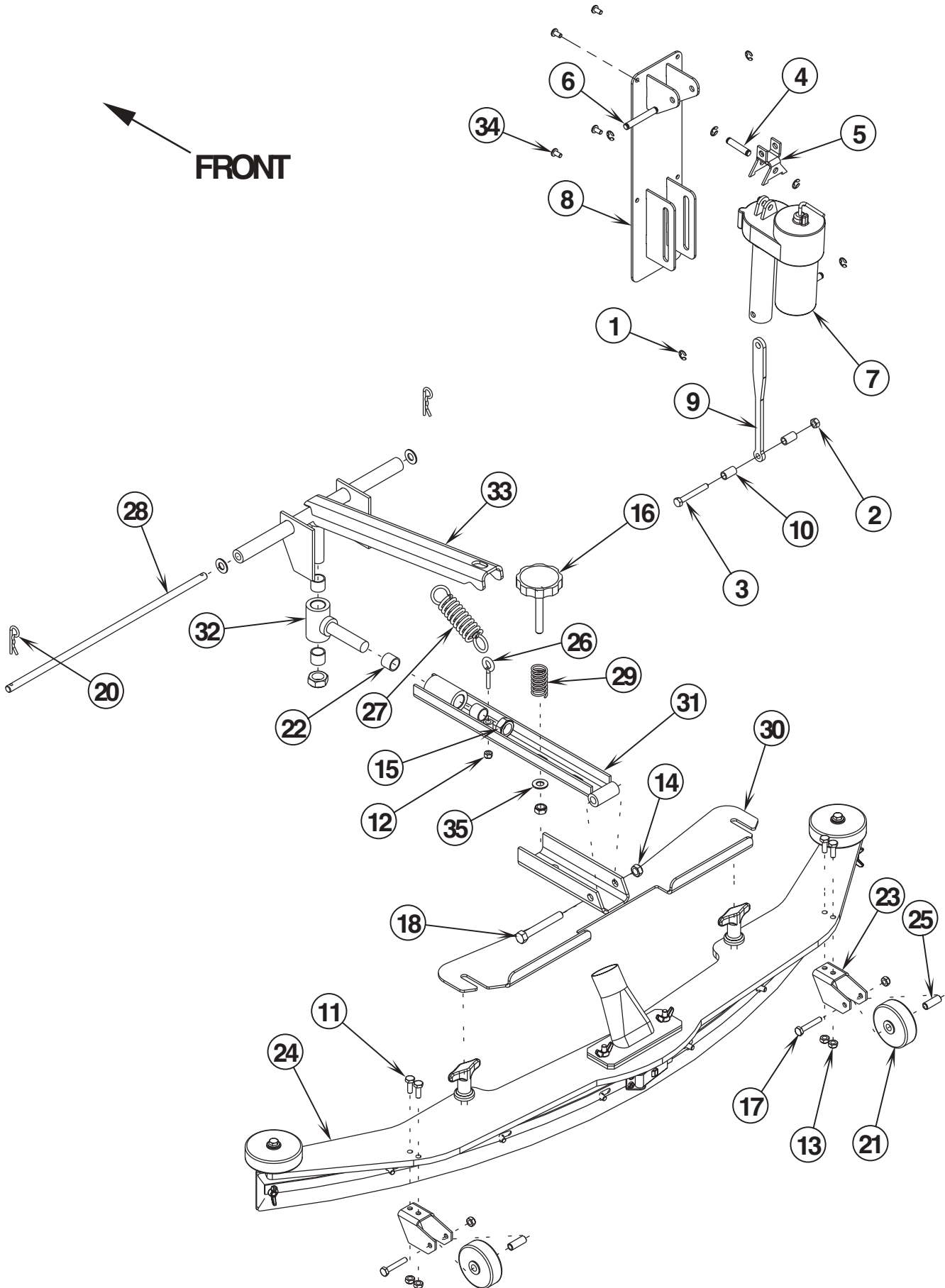
00-3	RECOVERY SYSTEM			
02-3	ConvertaMAX™ 34 / I-MAX™ 34HD			19

Item	Ref. No.	Qty	Description
1	56002098	3	Wsh, Flt SAE 1/4
2	56001993	1	Scr, Pan Phil 10-24 x .50
3	56002768	3	Nut, Hex Nyl Loc 10-24
4	56002859	6	Wsh, Flt SAE SS 1/4
5	56002905	4	Scr, Pan Phil SS 1/4-20 x 1.50
6	56003067	2	Scr, Pan Phil SS 1/4-20 x 1.00
7	56003293	1	Rivet, Pop A/S .125 x .38/.50
8	56002145	7	Scr, Pan Phil 1/4-20 x .50
9	56009098	2	Wsh, Flt SS .125 x .50 x .036
10	56302141	1	Vac Motor Duct
11	56302142	1	Float Duct
12	56302165	1	Gasket
13	56324497	2	Cage, Float
14	56391690	1	Ball, Float
15	56391807	1	Foam, Acoustical
16	56440213	2	Clamp, Hose SAE #32
17	56329145	2	Clamp, Hose SAE #24
18	56456797	1	Clamp, Hose SAE #36
19	56486112	2	Clamp P
20	56003537	3	Scr, Soc Shd .25 x .38 x 10-24
21	56057504	1	Bracket, Steel
22	56057505	1	Bar
23	56057508	1	Bar, Steel
24	56396031	1	Drain Hose
25	56397040	1	Vacuum Exhaust Hose
26	56397045	1	Lid
27	56397095	2	Clamp, Hose
28	56397096	2	Spacer, Bolt
29	56397151	1	Gasket
30	56397167	1	Strap, Retaining
31	56396225	1	Tank, Recovery NOTE 2
32	56397228	1	Motor, Vac 36VDC
*	56212223	1	Carbon Brush Set
33	56397303	1	Spacer, Vac Motor
34	56397307	1	Gasket, Vac
35	56396210	1	Vac Hose Assy (ConvertaMAX™ 34 before SN1422784 / I-MAX™ 34HD before SN1423253)
	56396219	1	Vac Hose Assy (ConvertaMAX™ 34 after SN1422783 / I-MAX™ 34HD after SN1423252)
36	56262143	1	Hose Assy
37	56003642	1	Rivet, Pop .50 x .62 NOTE 1
38	56477613	1	Tie, Cable

* = Not Shown

NOTE 1: Fill rivet with 409 Super Bonder Gel after installing.

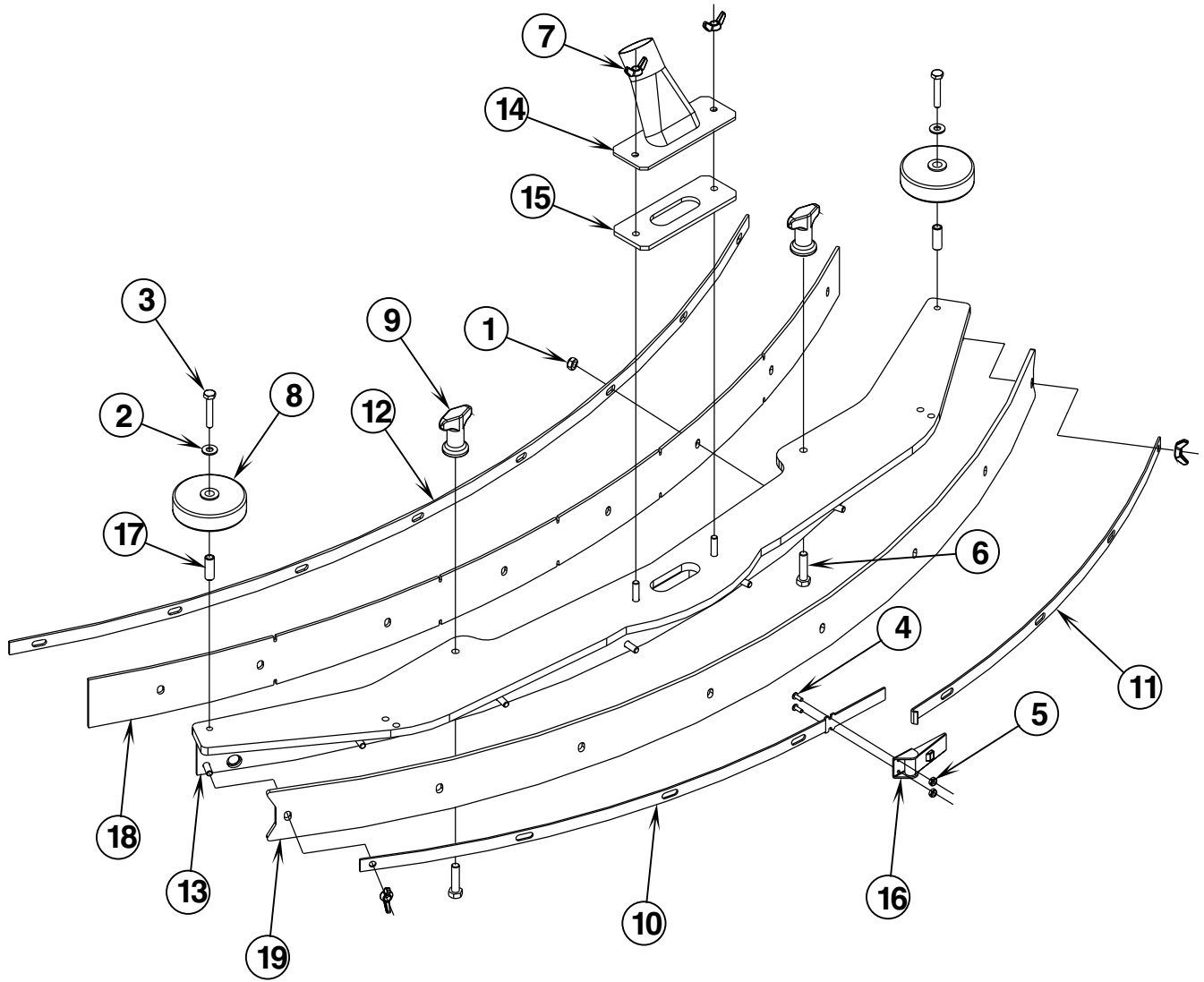
NOTE 2: Recovery Tank **PN 56396225** was implemented at the same time as item 35 Vac Hose Assy. Previous Recovery Tank **PN 56397223** is obsolete. If you have a machine built prior to the serial numbers shown in item 35 and need to replace your recovery tank, order Recovery Tank Kit **PN 56396228** which includes a new Recovery Tank **PN 56396225**, Vac Hose Assy **PN 56396219** and Hose Clamp **PN 56440213**.



00-3	SQUEEGEE SYSTEM (before SN 1477842)		
01-6	ConvertaMAX™ 34 / I-MAX™ 34HD		21

Item	Ref. No.	Qty	Description
1	56003262	6	Ring, Ret Ext Type E .38 Dia.
2	56003405	1	Nut, Hex Nyl Loc SS M8-1.25
3	56003464	1	Scr, Hex Hd SS M8-1.25 x 60mm
4	56104760	1	Pin
5	56392454	1	Yoke, Actuator
6	56412088	2	Pin
7	56397230	1	Actuator, Motor 36V
*	56470433	1	Carbon Brush Set
*	56393790	2	Limit Switch
8	56397279	1	Weldment, Actuator Mount
9	56397285	1	Link
10	56397286	2	Spacer
11	56002807	4	Scr, Hex Hd SS 1/4-20 x .75
12	56002708	1	Nut, Hex Nyl Loc 1/4-20
13	56002850	6	Nut, Hex Nyl Loc-Thin SS 1/4-20
14	56002852	2	Nut, Hex Nyl Loc-Thin SS 3/8-16
15	56002855	2	Nut, Hex Nyl Loc-Thin SS 5/8-11
16	56035163	1	Assembly, Knob Adjustment
17	56002901	2	Scr, Hex Hd SS 1/4-20 x 1.50
18	56002903	1	Scr, Hex Hd SS 3/8-16 x 2.75
19			Omitted Intentionally
20	56003120	2	Pin, Cotter Hair
21	56324350	2	Wheel
22	56367389	4	Bearing, Sleeve
23	56409648	2	Bracket, Wheel
24	56409423	1	Squeegee Assembly (ConvertaMAX™ 34)
	56397294	1	Squeegee Assembly (I-MAX™ 34HD)
25	56471220	2	Bushing .25 x .37 x 1.00
26	56009220	1	Eye Bolt 1/4-20 x 1.00
27	56051136	1	Spring, Ext.
28	56056371	1	Shaft .375 x 14.62
29	56056585	1	Spring, Comp.
30	56396065	1	Weld't, Squeegee Mount
31	56396076	1	Squeegee Bar Weld't
32	56396085	1	Squeegee Pivot Weld't
33	56397241	1	Squeegee Lift Weld't
34	56002145	4	Scr, Pan Phil 1/4-20 x .50
35	56002910	1	Wsh, Fit SAE SS 3/8

* = Not Shown

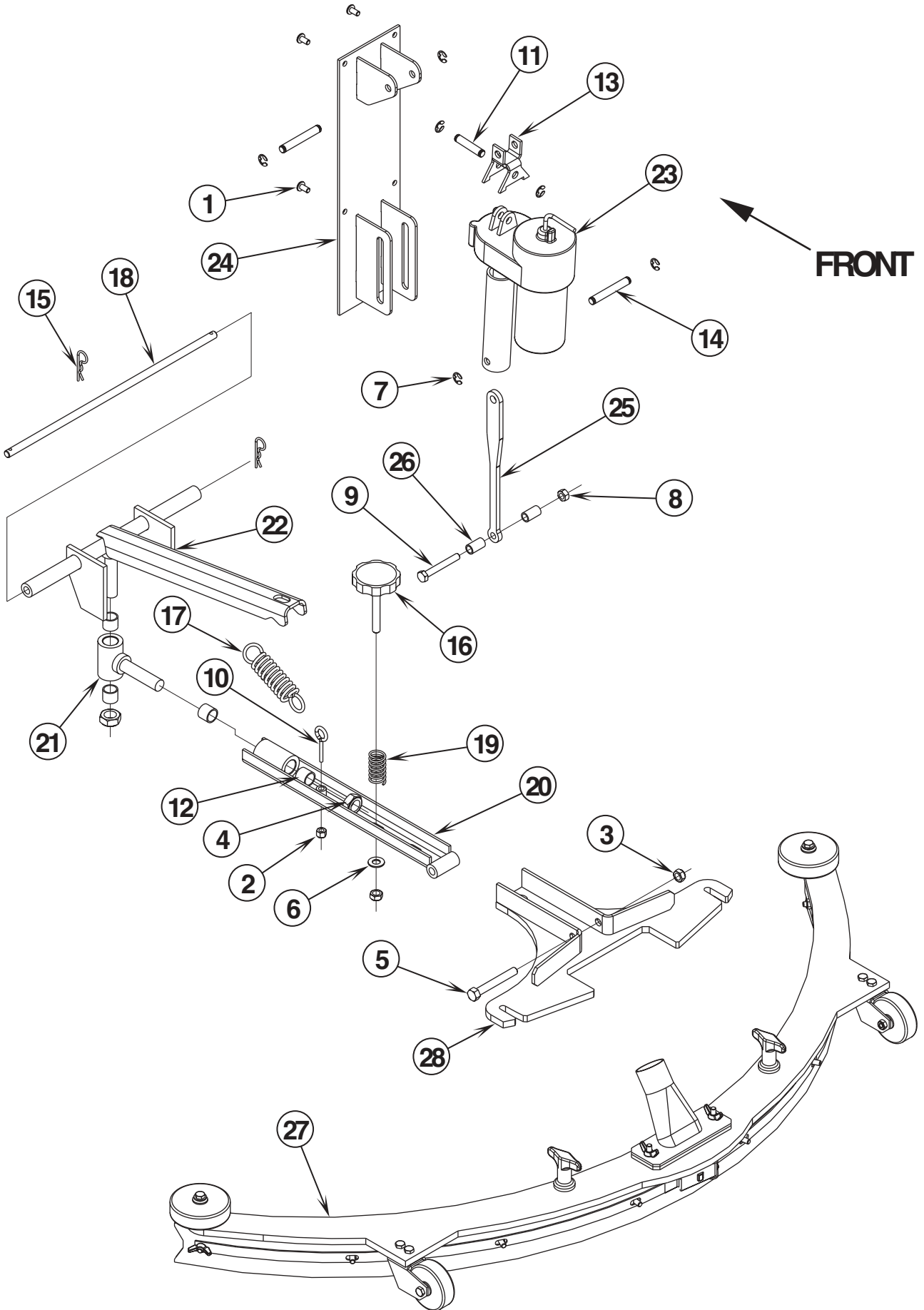


FRONT

00-3	SQUEEGEE ASSEMBLY (before SN 1477842)		
01-6	ConvertaMAX™ 34 / I-MAX™ 34HD		23

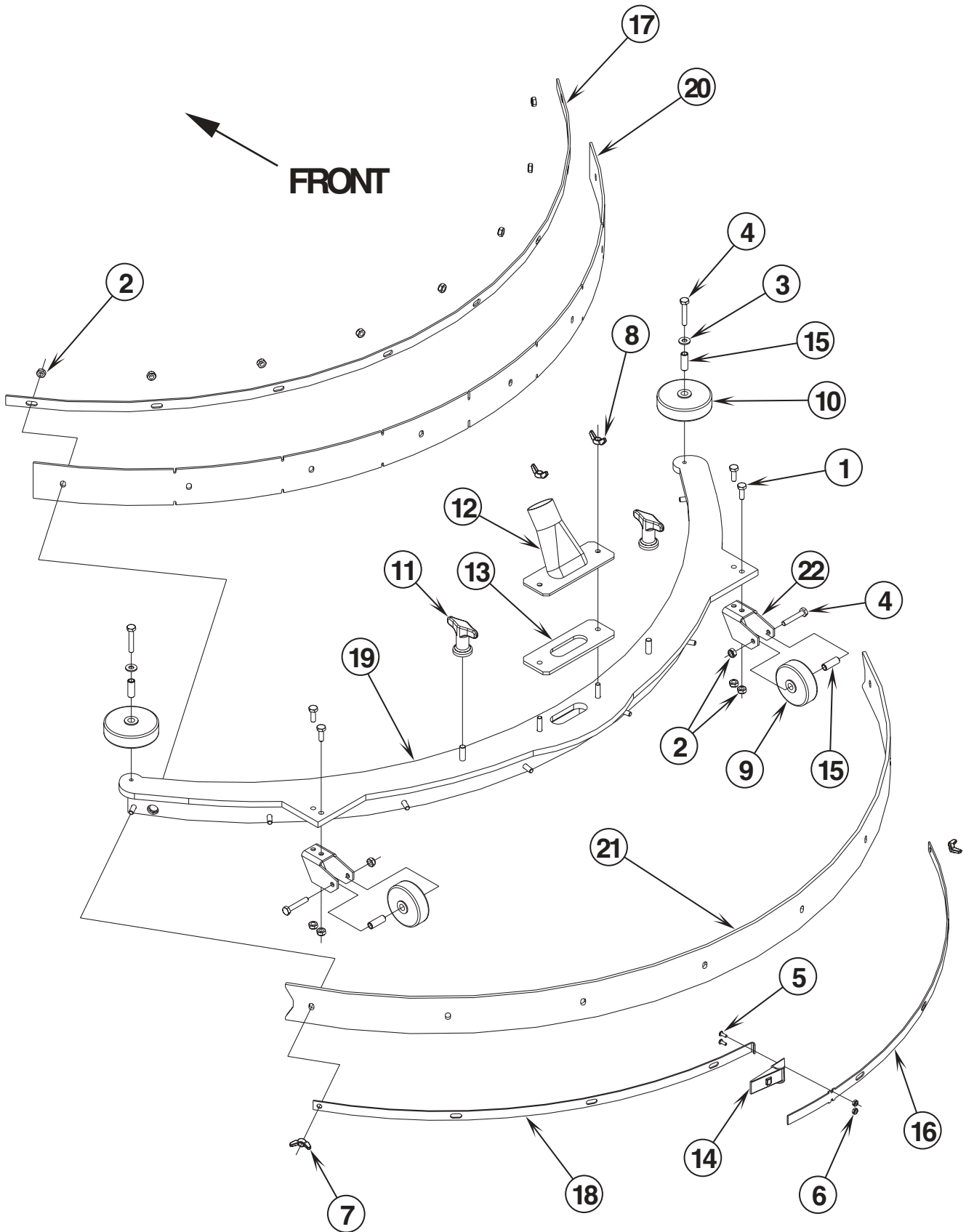
Item	Ref. No.	Qty	Description
1	56002850	8	Nut, Hex Nyl Loc-Thin SS 1/4-20
2	56002859	2	Wsh, Flt SAE SS 1/4
3	56002901	2	Scr, Hex Hd SS 1/4-20 x 1.50
4	56002909	2	Scr, Pan Phil SS 6-32 x .38
5	56002964	2	Nut, Hex Nyl Loc-Thin SS 6-32
6	56003302	2	Scr, Hex Thd To Hd SS 5/16-18 x 1.25
7	56009111	4	Nut, Wing SS 1/4-20
8	56324499	2	Wheel, 3.00
9	56370711	2	Nut, Thumb
10	56409415	1	Strap, Rear
11	56409416	1	Strap, Rear
12	56409417	1	Strap, Front
13	56409422	1	Tool Weld't
14	56409425	1	Tube Weld't
15	56409426	1	Gasket
16	56471194	1	Latch
17	56471220	2	Bushing .25 x .37 x 1.00
18	56409627	1	Blade, Front, Gum Rubber (ConvertaMAX™ 34)
	56396135	1	Blade, Front, Linatex (I-MAX™ 34HD)
19	56409413	1	Blade, Rear, Gum Rubber (ConvertaMAX™ 34)
	56396136	1	Blade, Rear, Linatex (I-MAX™ 34HD)
**	56409429	1	Standard Blade Kit (Gum Rubber)
**	56409430	1	Oil Resistant Blade Kit (Neoprene)
**	56396173	1	Linatex Blade Kit
**	56397327	1	Blade, Front-Tile Gum
**	56397328	1	Blade, Front-Tile Linatex

** = Not Included (optional)



00-3	SQUEEGEE SYSTEM (after SN 1477841)		
01-6	ConvertaMAX™ 34 / I-MAX™ 34HD		25

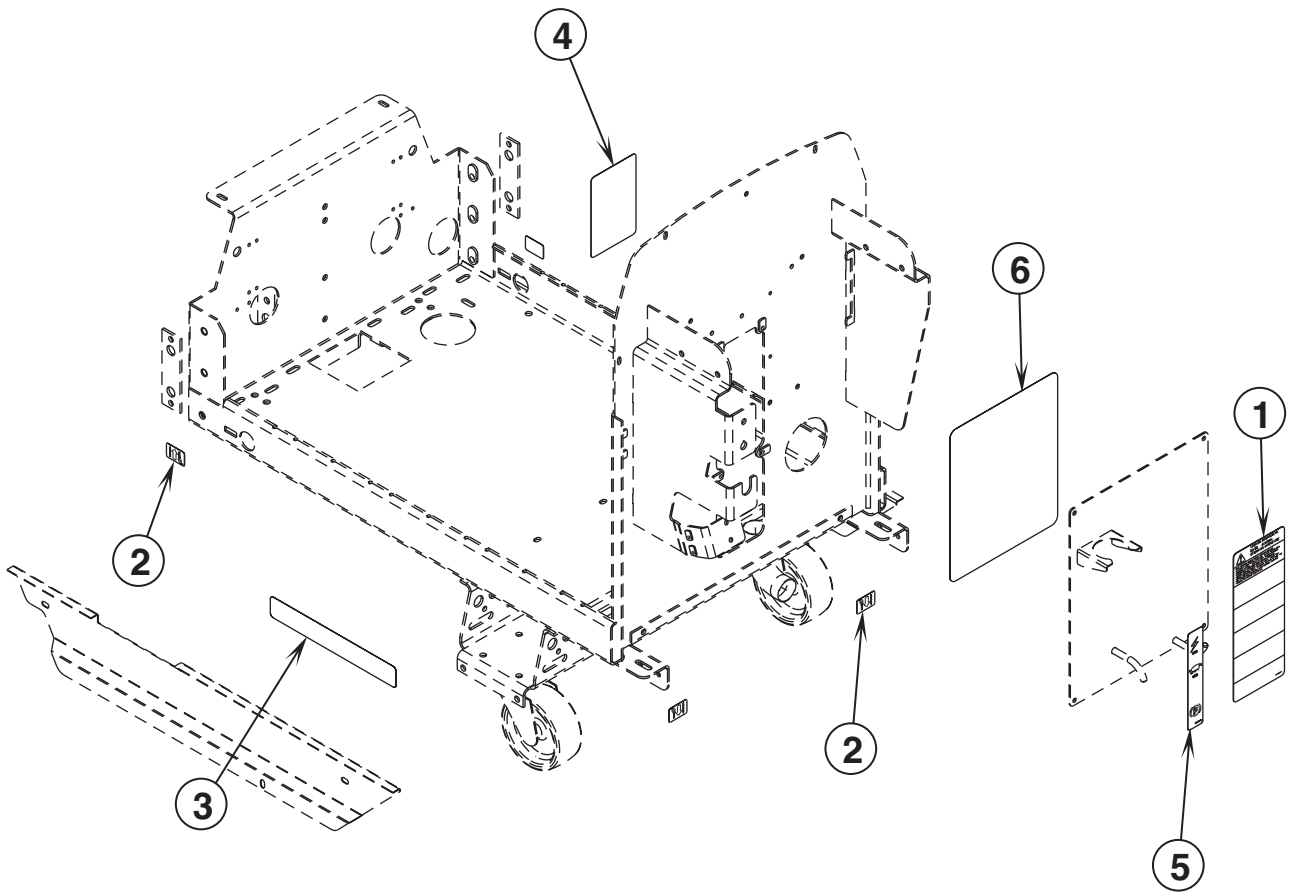
Item	Ref. No.	Qty	Description
1	56002145	4	Scr, Pan Phil 1/4-20 x .50
2	56002708	1	Nut, Hex Nyl Loc 1/4-20
3	56002852	2	Nut, Hex Nyl Loc-Thin SS 3/8-16
4	56002855	2	Nut, Hex Nyl Loc-Thin SS 5/8-11
5	56002903	1	Scr, Hex Hd SS 3/8-16 x 2.75
6	56002910	1	Wsh, Flt SAE SS 3/8
7	56003262	6	Ring, Ret Ext Type E 0.38 Dia
8	56003405	1	Nut, Hex Nyl Loc SS M8 x 1.25
9	56003464	1	Scr, Hex Hd SS M8-1.25 x 60MM
10	56009220	1	Bolt, Eye 1/4-20 x 1.38
11	56104760	1	Pin
12	56367389	4	Bearing, Sleeve
13	56392454	1	Yoke, Actuator
14	56412088	2	Pin
15	56003120	2	Pin, Cotter Hair .0915 x .375
16	56035163	1	Assembly, Knob, Adjustment
17	56051136	1	Spring, Ext
18	56056371	1	Shaft .375 x 14.62
19	56056585	1	Compression Spring
20	56396076	1	Squeegee Bar Weld't
21	56396085	1	Squeegee Pivot Weld't
22	56397093	1	Squeegee Lift Weld't
23	56397230	1	Actuator, Motor 36V
24	56397279	1	Weldment, Actuator Mount
25	56397285	1	Link
26	56397286	2	Spacer
27	56397349	1	Squeegee Assembly (ConvertaMAX™ 34)
	56397227	1	34 Squeegee Assembly (I-MAX™ 34HD)
28	56397356	1	Mounting Plate Weldment



00-3	SQUEEGEE ASSEMBLY (after SN 1477841)		
02-3	ConvertaMAX™ 34 / I-MAX™ 34HD		27

Item	Ref. No.	Qty	Description
1	56002807	4	Scr, Hex Hd SS 1/4-20 x .75
2	56002850	14	Nut, Hex Nyl Loc-Thin SS 1/4-20
3	56002859	2	Wsh, Flt SAE SS 1/4
4	56002901	4	Scr, Hex Hd SS 1/4-20 x 1.50
5	56002909	2	Scr, Pan Phil SS 6-32 x .38
6	56002964	2	Nut, Hex Nyl Loc-Thin SS 6-32
7	56009048	2	Nut, Wing Loc 1/4-20
8	56009111	2	Nut, Wing SS 1/4-20
9	56324350	2	Wheel
10	56324499	2	Wheel 3.00
11	56370711	2	Nut, Thumb
12	56409425	1	Tube Weldment
13	56409426	1	Gasket
14	56471194	1	Latch Assembly
15	56471220	4	Bushing .25 x .37 x 1.0
16	56397353	1	Strap, Rear
17	56397354	1	Strap, Front
18	56397355	1	Strap, Rear
19	56397359	1	Squeegee Tool Weldment
20	56397362	1	Blade, Front (ConvertaMAX™ 34)
	56397089	1	Blade, Front (I-MAX™ 34HD)
21	56397363	1	Blade, Rear (ConvertaMAX™ 34)
	56397091	1	Blade, Rear (I-MAX™ 34HD)
22	56409656	2	Bracket, Wheel
**	56397094	1	Blade Kit (Gum) (contains one 56397363 & 56397362)
**	56397106	1	Blade Kit (Linatex) (contains one 56397091 & 56397089)
**	56397147	1	Blade, Front-Tile Gum
**	56397148	1	Blade, Front-Tile Linatex
**	56397595	1	Blade, Kit – Oil Resistance

** = Optional



00-3	DECAL SYSTEM		
02-3	ConvertaMAX™ 34 / I-MAX™ 34HD		29

Item	Ref. No.	Qty	Description
1	56014601	1	Decal, Caution
2	56015370	4	Decal, Tie Down
3	56016410	2	Decal, 34 Commercial (ConvertaMAX™ 34)
	56016412	2	Decal, 34 Industrial (I-MAX™ 34HD)
4	56016413	1	Decal, Battery Wiring
5	56016451	1	Decal, Circuit Breaker
6	56016487	1	Decal, Electrical Schematic

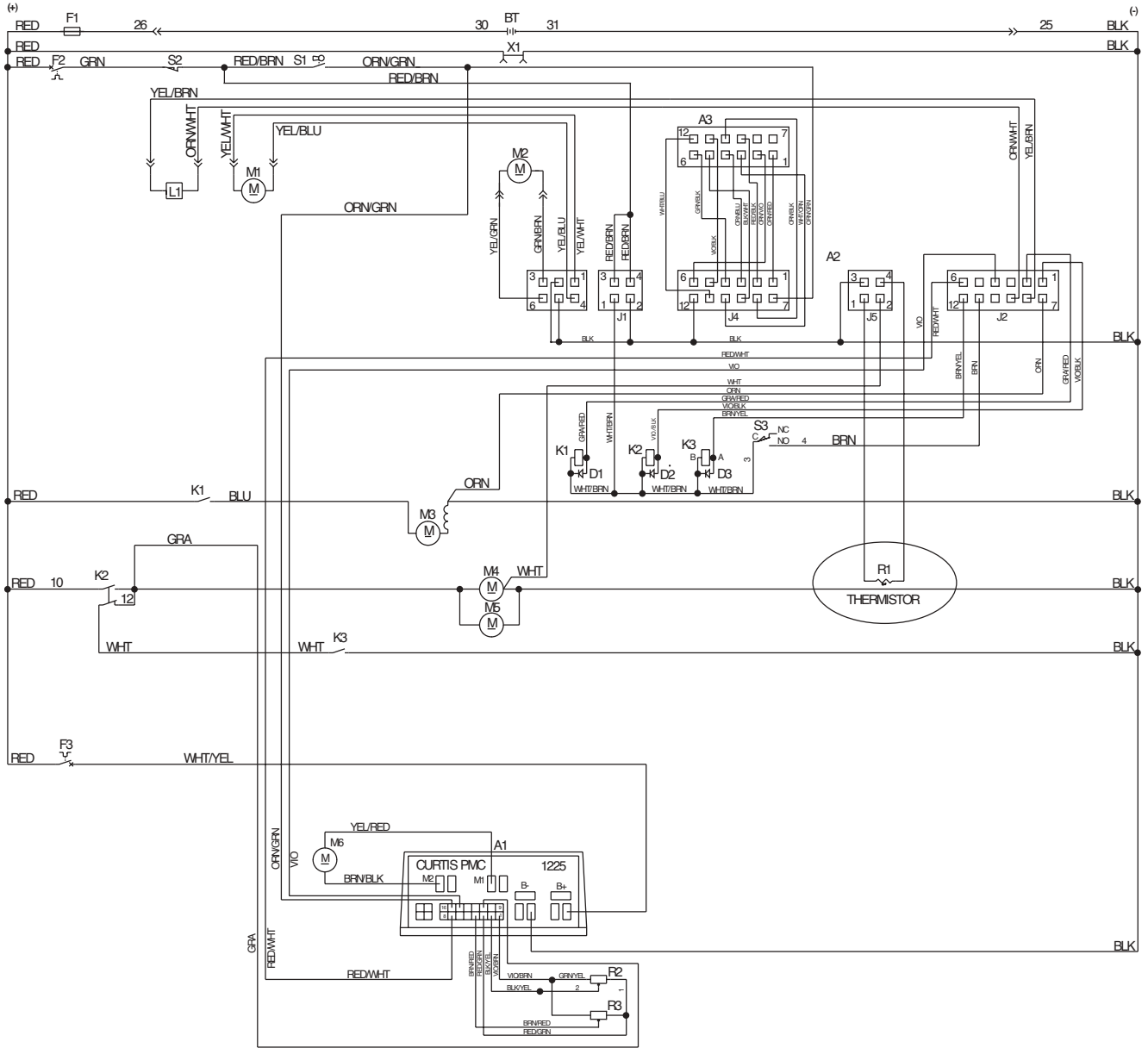
WIRING DIAGRAM

00-3

30

ConvertaMAX™ 34 / I-MAX™ 34HD

02-3



00-3	WIRING DIAGRAM			
01-10	ConvertaMAX™ 34 / I-MAX™ 34HD			31

Item	Ref. No.	Qty	Description
A1	56397252	1	Controller, 36V
A2	56397255	1	Control Assy (before SN1515053) TSB 793
	56397211	1	Control Assy (after SN1515052) TSB 793
A3	56397259	1	Display Panel Assembly
BT		6	Battery, 6V
D1		1	Diode
D2		1	Diode
D3		1	Diode
F1	56412089	1	Fuse, 150 Amp
F2	56387316	1	Circuit Breaker 10 Amp (Control Circuit)
F3	56452193	1	Circuit Breaker 40 Amp (Wheel Drive)
K1	56395450	1	Contact, 36 VDC (Vac Motor)
K2	56397250	1	Contact, 36V, SPDT (Brush Motor)
K3	56416157	1	Relay, SPST, 36V (Brush Remove)
L1	56409154	1	Solenoid Valve NOTE #1 TSB 788
*	56324506	1	Viton Seal Kit
*	56324507	1	EPDM Seal Kit
	56397215	1	Solenoid Valve NOTE #2 TSB 788
M1	56393303	1	Actuator, Motor (Brush Lift)
*	56470433	1	Carbon Brush Set
*	56393790	2	Limit Switch
*	56388520	1	Plastic Drive Nut
M2	56397230	1	Actuator, Motor (Squeegee Lift)
*	56470433	1	Carbon Brush Set
*	56393790	2	Limit Switch
M3	56397228	1	Motor, Vac 36VDC
*	56212223	1	Carbon Brush Set
M4	56635645	1	Motor & Gear Assy, 36VDC, .75HP (Brush Drive / ConvertaMAX™ 34)
	56397296	1	Motor & Gear Assy, 36VDC, 1.0HP (Brush Drive / I-MAX™ 34HD)
M5	56635645	1	Motor & Gear Assy, 36VDC, .75HP (Brush Drive / ConvertaMAX™ 34)
	56397296	1	Motor & Gear Assy, 36VDC, 1.0HP (Brush Drive / I-MAX™ 34HD)
M6	56635645	1	Motor & Gear Assy, 36VDC, .75HP (Wheel Drive)
R1		1	Thermistor (part of Cable Assy 56397297)
R2	56396197	1	Potentiometer, 100K (Speed Control)
R3	56397029	1	Potentiometer, 5K (Forward / Reverse)
S1	56396188	1	Switch, Key
*	56396189	A/R	Replacement Key
S2	56462362	1	Switch (Charger Interlock)
S3	56263174	1	Switch, Snap SPDT (Squeegee Reverse)
X1	56397251	1	Charge Connector Assy
10	56396194	1	Cable Assembly 4 AWG
12	56396193	1	Cable Assembly 4 AWG
*	56396192	1	Harness, Handle Wiring TSB 737
*	56396183	1	Harness, Main Wiring
*	56372673	12	Boot, Battery Post
*	56456460	4	Cable Assembly (Battery Cable)
*	56416445	1	Cable Assembly (Battery Cable)
*	56398000	1	Connector Assembly (Connects to Batteries)
*	56398001	1	Connector Assembly (Connects to Machine)
***	56397090	1	Bearing B.E.
***	56397135	1	Bearing F.E.
***	56397048	1	Brush Board Assy, W/Springs & Brushes
***	56397138	4	Brush Spring
***	56039276	4	Brush Assy

* = Not Shown

*** = Replacement Parts for 56635645 & 56397296

NOTE #1: ConvertaMAX™ 34 before SN1521967 / I-MAX™ 34HD before SN1517856

NOTE #2: ConvertaMAX™ 34 after SN1521966 / I-MAX™ 34HD after SN1517855



Nilfisk-Advance, Inc.
14600 21st Avenue North
Plymouth, MN, 55447-3408
www.nilfisk-advance.com
Phone: 800-989-2235
Fax: 800-989-6566
©2002 Nilfisk-Advance, Inc.,
Plymouth, MN 55447-3408
Printed in the U.S.A.