



## Electronic Service Manuals

This electronic document is provided as a service to our customers. We do not create the contents of the information contained in this document. Should you have detailed questions pertaining to the information contained in this document, you may contact Michco, or the manufacturer which provided the original information in this electronic deliverable. Michco's only part in this electronic deliverable was the electronic assembly process.

You may contact Michco through the following methods:  
Phone (517) 484-9312 or (800) 331-3339 MI, OH, IN only  
2011 N. High St. -- Lansing, Michigan -- 48906  
Fax: (517) 484-9836  
Email: [CustServ@Michco.com](mailto:CustServ@Michco.com)  
Web site: [www.Michco.Com](http://www.Michco.Com)  
Parts Web site: [www.FloorMachineParts.Com](http://www.FloorMachineParts.Com)

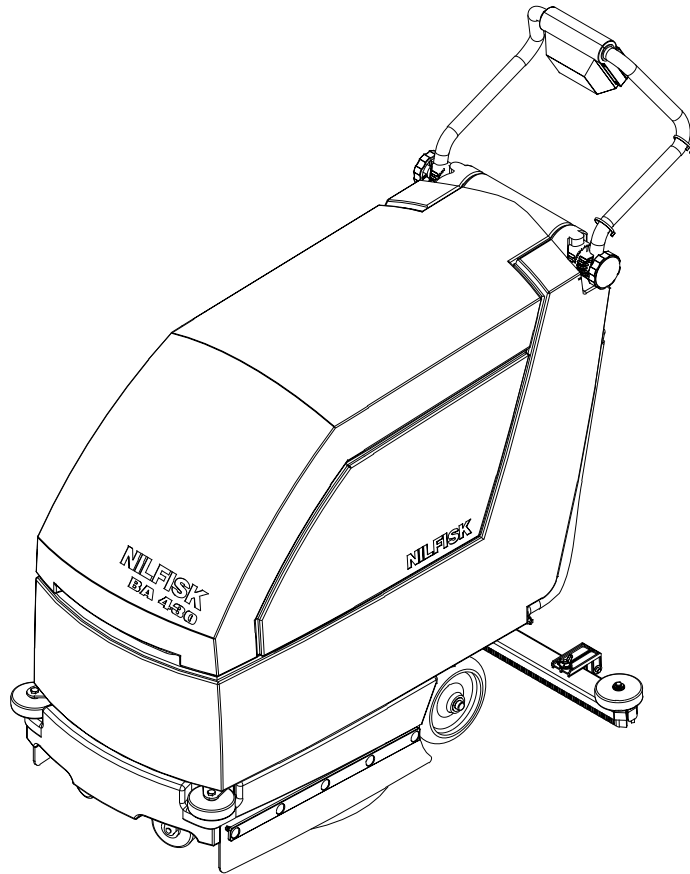
Order Parts on Line at:  
**[www.FloorMachineParts.Com](http://www.FloorMachineParts.Com)**

Directly to Parts & Service:  
By Email: **[Shop@Michco.com](mailto:Shop@Michco.com)**  
By Fax: (517) 702-2041  
By Voice: Use numbers above.

**Serving the Cleaning Industry Since 1922**

Notice: All copyrighted material remains property of original owners, all trademarks are property of respective owners. Manuals are subject to Manufacturer's reproduction limitations. Originals or reproductions were provided by manufacturers through a request. We make no warranty as to the correctness of information provided in this document and you assume all risk.

# BA 430



## **PARTS LIST**

**Nilfisk MODEL 56302200**

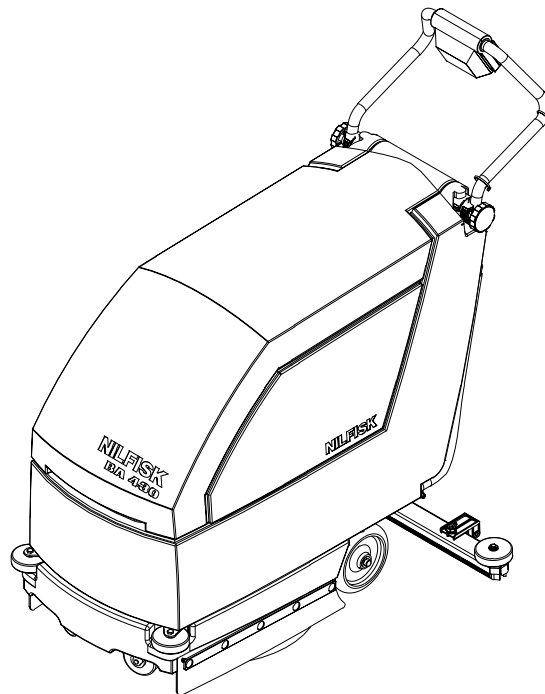
This parts list is for machines after serial number 1169522



**Nilfisk  
Advance**

*setting standards*

1/97 revised 8/02 FORM NO. 56042321  
BOOK E SECTION 2.6.1

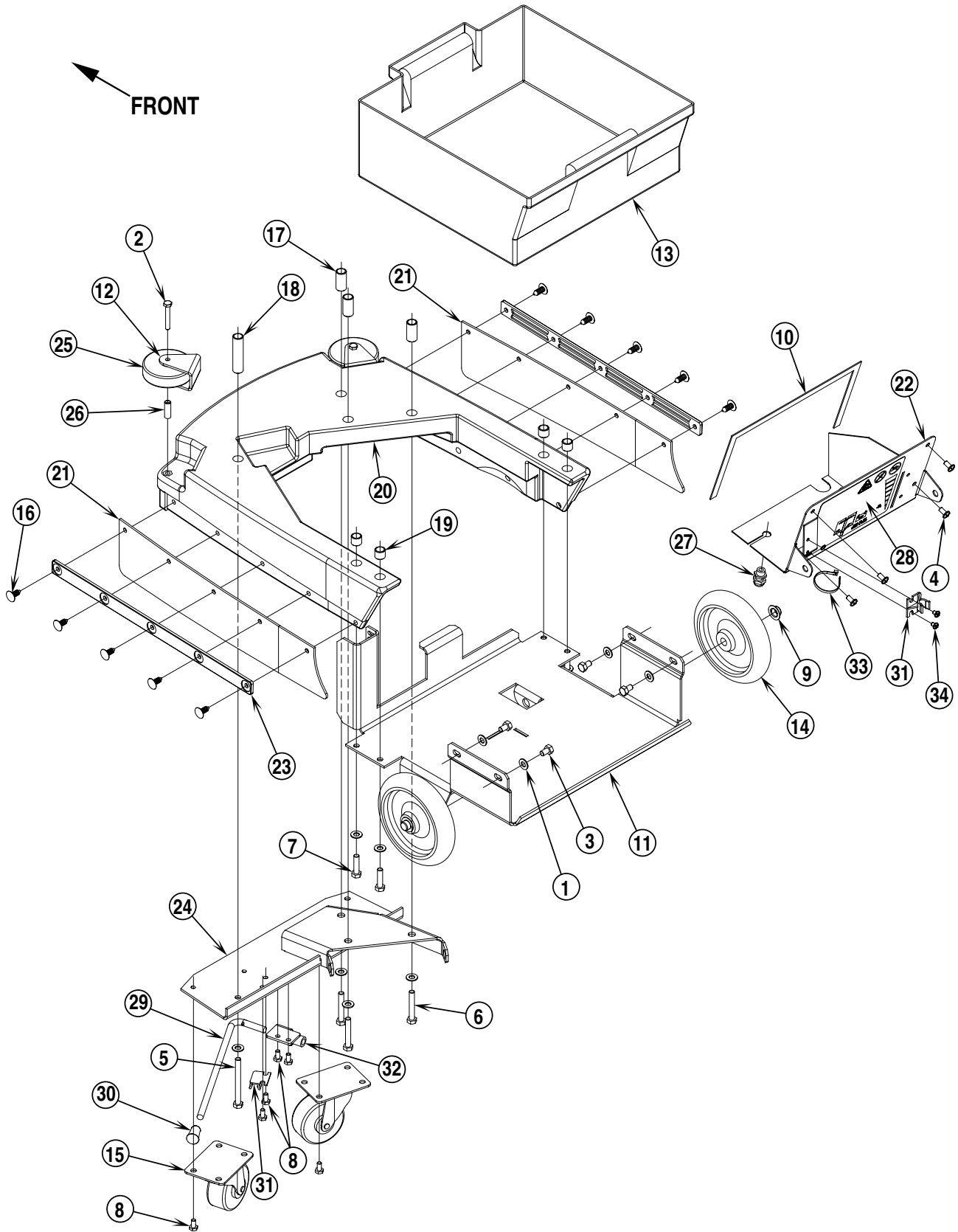
**DESCRIPTION****PLAN**

Chassis System .....	E-2.6.1-3
Handle System .....	E-2.6.1-5
Solution System .....	E-2.6.1-7
Recovery System .....	E-2.6.1-9
Squeegee System .....	E-2.6.1-11
Brush Drive System .....	E-2.6.1-13
Electrical System / Wiring Diagram .....	E-2.6.1-15
Brush / Disc Selector Guide .....	E-2.6.1-16

**WHEN ORDERING PARTS**

- \* Use the 8 digit numbers from the "Ref. No." columns in this parts list.
- \* Specify the model and serial number of the machine.
- \* Use the space below to record the model and serial number for future reference.

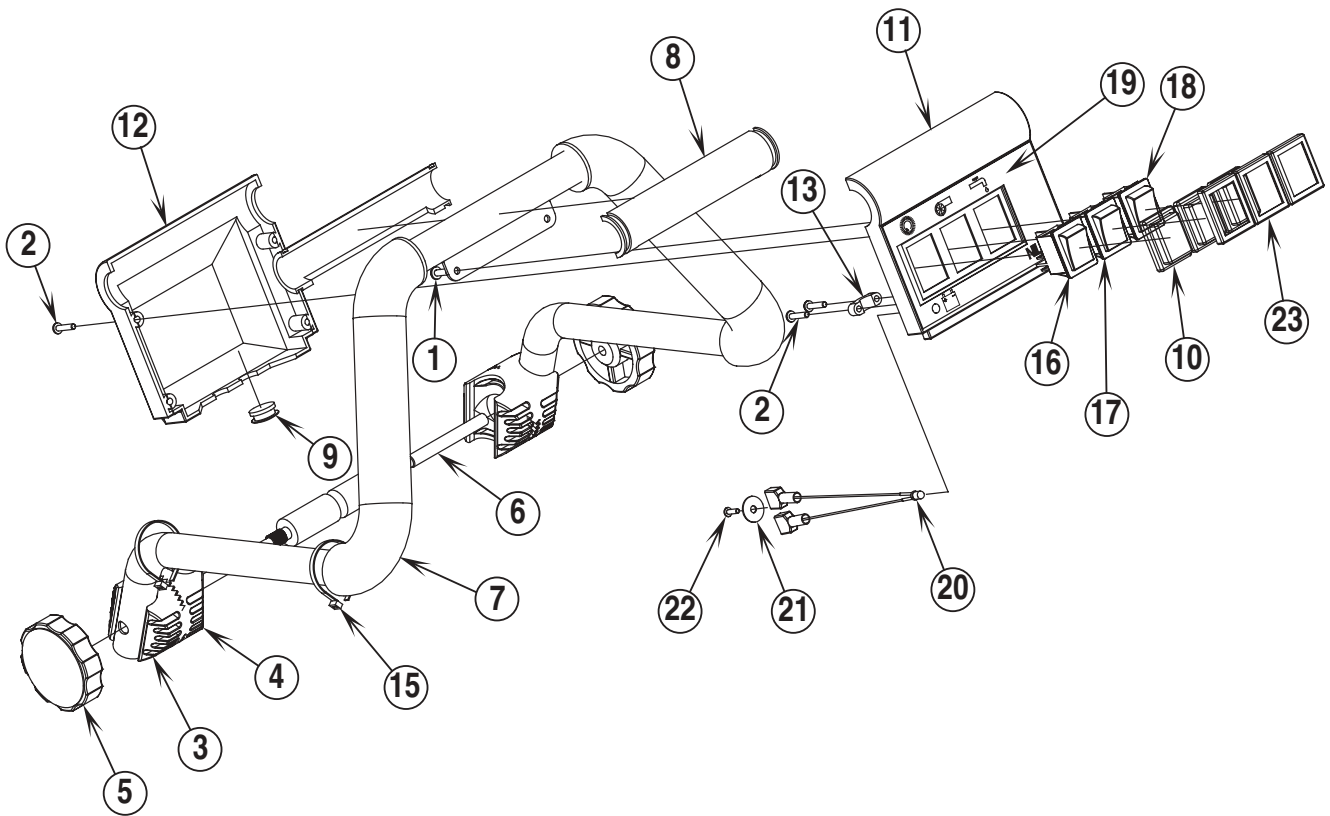
Model \_\_\_\_\_ Serial No. \_\_\_\_\_



97-1	<b>CHASSIS SYSTEM</b>	<b>BOOK E</b>		
00-1	<b>BA 430</b>	<b>E</b>	<b>2.6.1</b>	<b>3</b>

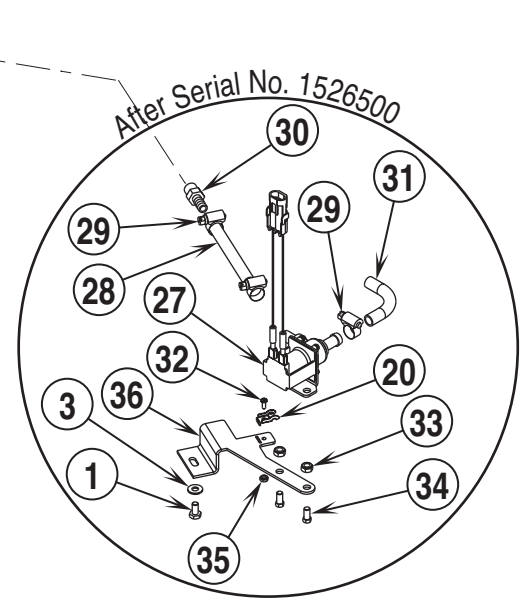
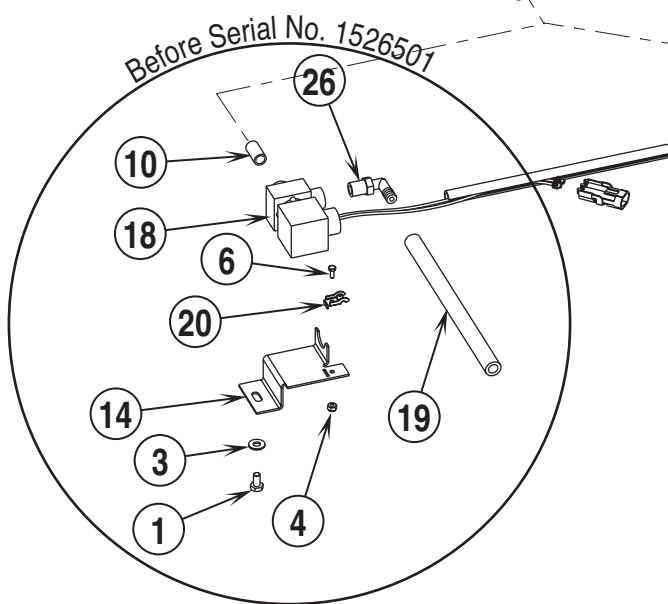
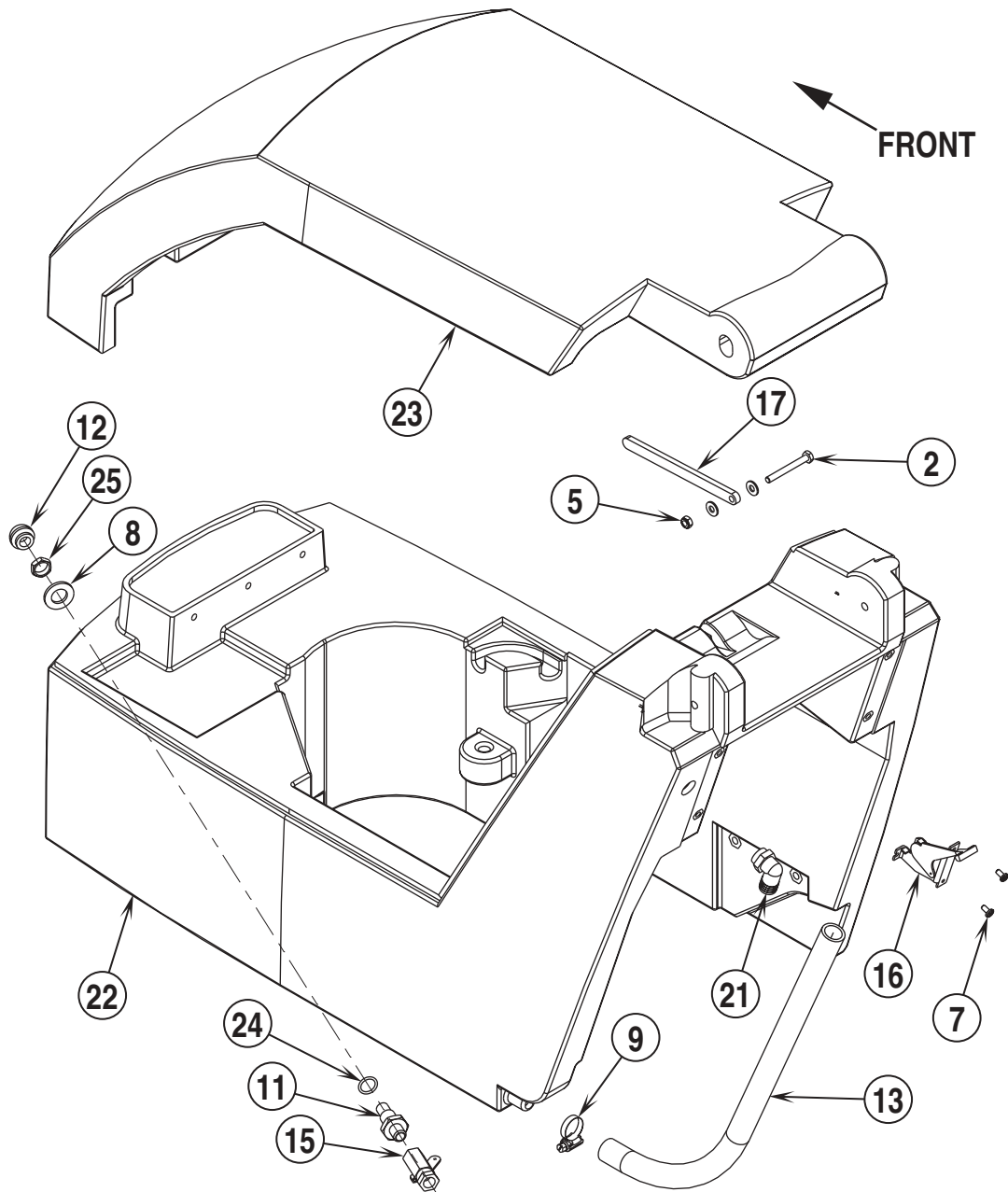
Item	Ref. No.	Qty	Description
1	56001939	12	Wsh, Flt SAE 5/16
2	56001967	2	Scr, Hex Hd 1/4-20 x 1.75
3	56002992	4	Scr, Hex Hd SS 5/16-18 x .50
4	56003119	4	Scr, Pan Phil SS 1/4-20 x .50
5	56003370	1	Scr, Hex Loc SS 5/16-18 x 3.25
6	56003371	3	Scr, Hex Loc SS 5/16-18 x 2.00
7	56003372	4	Scr, Hex Loc SS 5/16-18 x 1.25
8	56009033	8	Scr, Hex Thd Form 1/4-20 x .50
9	56009097	2	Nut, Push Cap 1/2
10	56200754	21"	Gasket, RS Strip (53.34 cm)
11	56302116	1	Battery Box
12	56302132	2	Bracket, Wheel
13	56302143	1	Battery Tray
14	56302151	2	Wheel
15	56302152	2	Caster ( <b>before February 2000</b> )
	56302319	2	Wheel, Caster ( <b>after January 2000</b> )
16	56302183	10	Clip, Panel
17	56302191	3	Spacer
18	56302192	1	Spacer
19	56302193	4	Spacer
20	56302201	1	Skirt
21	56302205	2	Blade
22	56302208	1	Control Panel
23	56302211	2	Strap
24	56302213	1	Caster Mount
25	56324499	2	Wheel 3.00
26	56360139	2	Bushing
27	56456027	1	Strain Relief
28	56015939	1	Decal, Control Panel
29	56302247	1	Rod
30	56302244	1	Tip, Rubber
31	56302248	2	Clip
32	56302249	1	Kickstand Weldment
33	56478246	1	Tie, Cable
34	56009109	2	Scr, Pan Phil Thd Form 10-24 x .25

←  
FRONT



97-1	<b>HANDLE SYSTEM</b>	<b>BOOK E</b>		
02-8	<b>BA 430</b>	<b>E</b>	<b>2.6.1</b>	<b>5</b>

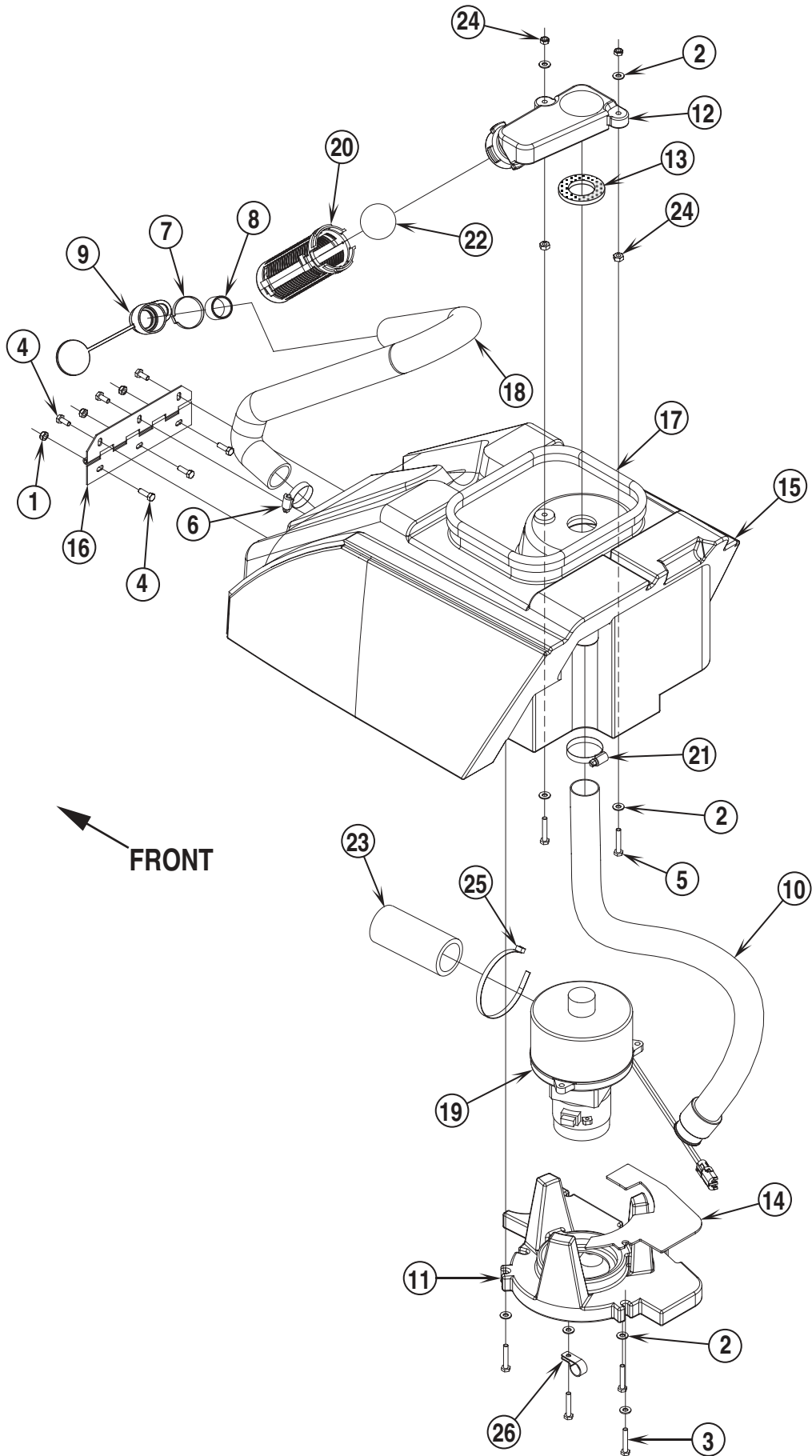
Item	Ref. No.	Qty	Description
1	56003354	2	Scr, Pan Phil M3.9 x 12
2	56003356	6	Scr, Pan Phil M3.5 x 16
3	56264118	2	Ratchet
4	56264123	2	Ratchet
5	56302167	2	Knob
6	56302227	2	Screw, Pivot
7	56302228	1	Handle Weldment
8	56302230	2	Handle Spacer
9	56302232	1	Plug
10	56340011	3	Protection Cap
11	56340076	1	Switch Housing, Front
12	56340077	1	Switch Housing, Rear
13	56340083	1	Clamp
15	56478246	2	Tie, Cable
16	56340199	1	Brush Switch
17	56340199	1	Vacuum Motor Switch
18	56340199	1	Solution Solenoid Switch
19	56015960	1	Decal, Control Panel
20	56302240	1	LED Indicator Assembly ( <b>low battery</b> )
21	56200190	1	Washer, Fibre
22	56003194	1	Scr, Pan Phil Plastite 4-24 x .38
23	56340195	3	Frame



97-1	<b>SOLUTION SYSTEM</b>	<b>BOOK E</b>		
01-10	<b>BA 430</b>	<b>E</b>	<b>2.6.1</b>	<b>7</b>

Item	Ref. No.	Qty	Description
1	56001854	1	Scr, Hex Hd 1/4-20 x .50
2	56001856	1	Scr, Hex Hd 1/4-20 x 2.25
3	56002098	3	Wsh, Flt SAE 1/4
4	56002830	1	Nut, Hex Nyl Loc 6-32
5	56002840	1	Nut, Hex Nyl Loc-Thin 1/4-20
6	56003068	1	Scr, Hex Hd 6-32 x .38
7	56009030	2	Scr, Pan Phil Thd Form 10-24 x .38
8	56009218	1	Wsh, Flt .688 x 1.25 x .125
9	56112771	1	Clamp, Hose
10	56150223	1	Nipple, 1/4-18
11	56172075	1	Nipple, 1/4NPT x 5/8-18
12	56172096	1	Strainer
13	56228400	1	Solution Drain Hose
14	56302133	1	Bracket, Cable
15	56302158	1	One Way Ball Valve
16	56302159	1	Control Cable
17	56302206	1	Bar, Support
18	56302226	1	Solenoid Valve Assembly <b>TSB 785</b>
*	56324506	A/R	Viton Seal Kit
*	56324507	A/R	EPDM Seal Kit
19	56302260	1	Solution Drain Hose <b>TSB 674</b>
20	56344265	1	Clamp, Cable
21	56456802	1	Barb, 90 Elbow 11/16 x 3/4NPT
22	56302203	1	Solution Tank
23	56302204	1	Tank Cover
24	56742552	1	O-Ring - 114 NBR 70
25	56745860	1	Nut, Jam 5/8-18 Brass
26	56900036	1	Barb, 90 Elbow 3/8 x 1/4NPT
<b>After SN1526501</b>			
27	56302013	1	Solenoid Valve Assembly <b>TSB 785</b>
28	56302017	1	Hose, 4.5"
29	56219932	3	Clamp, Hose SAE #4
30	56900034	1	Barb, Adapter 3/8 x 1/4NPT
31	56302015	1	Hose, 4.0"
32	56002909	1	Scr, Pan Phil SS 6-32 x .38
33	56002850	2	Nut, Hex Nyl Loc-Thin SS 1/4-20
34	56002801	2	Scr, Hex Hd SS 1/4-20 x .50
35	56002964	1	Nut, Hex Nyl; Loc-Thin SS 6-32
36	56302009	1	Bracket, Cable

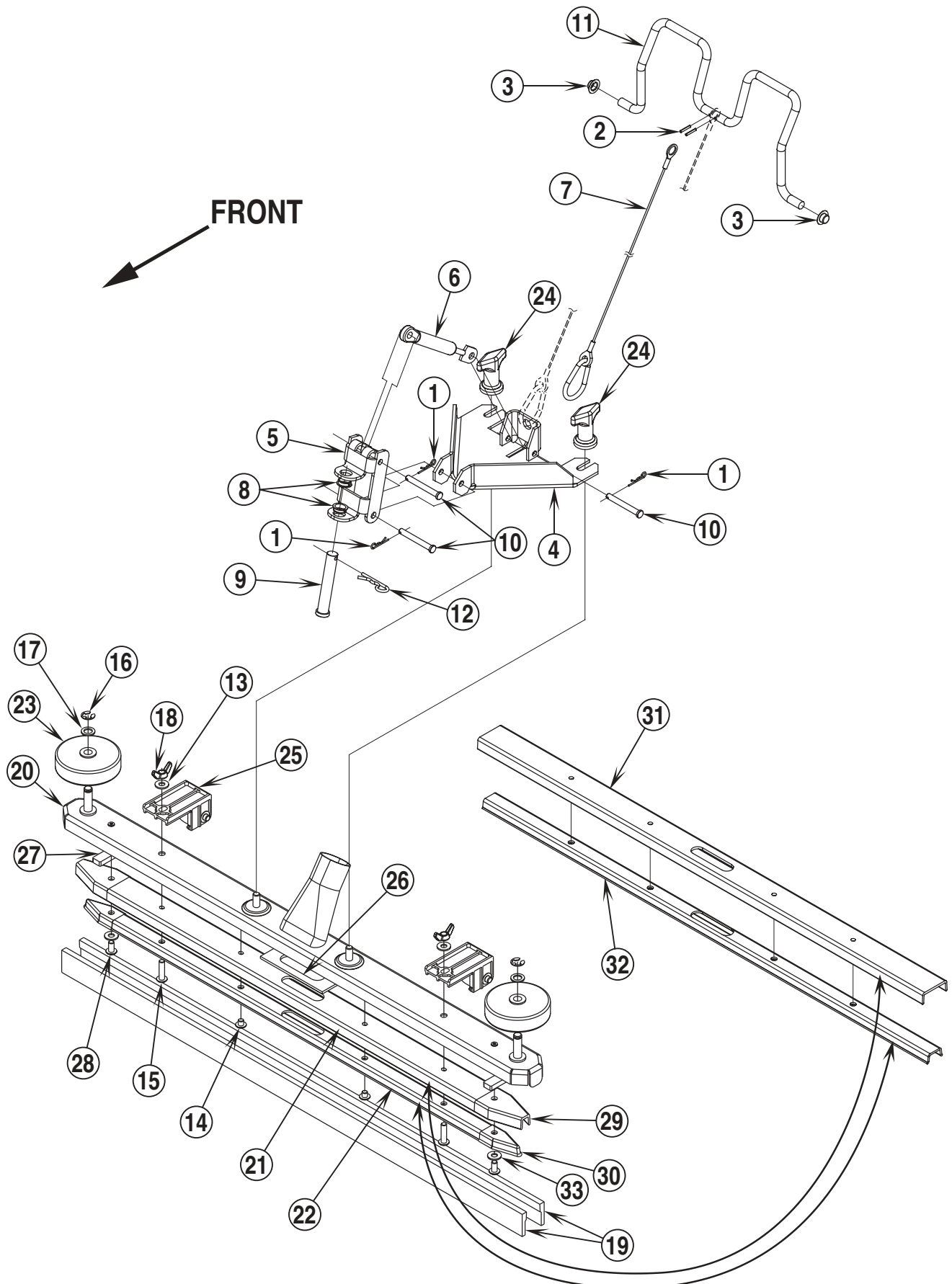
\* = Not Shown



97-1	<b>RECOVERY SYSTEM</b>	<b>BOOK E</b>		
01-8	<b>BA 430</b>	<b>E</b>	<b>2.6.1</b>	<b>9</b>

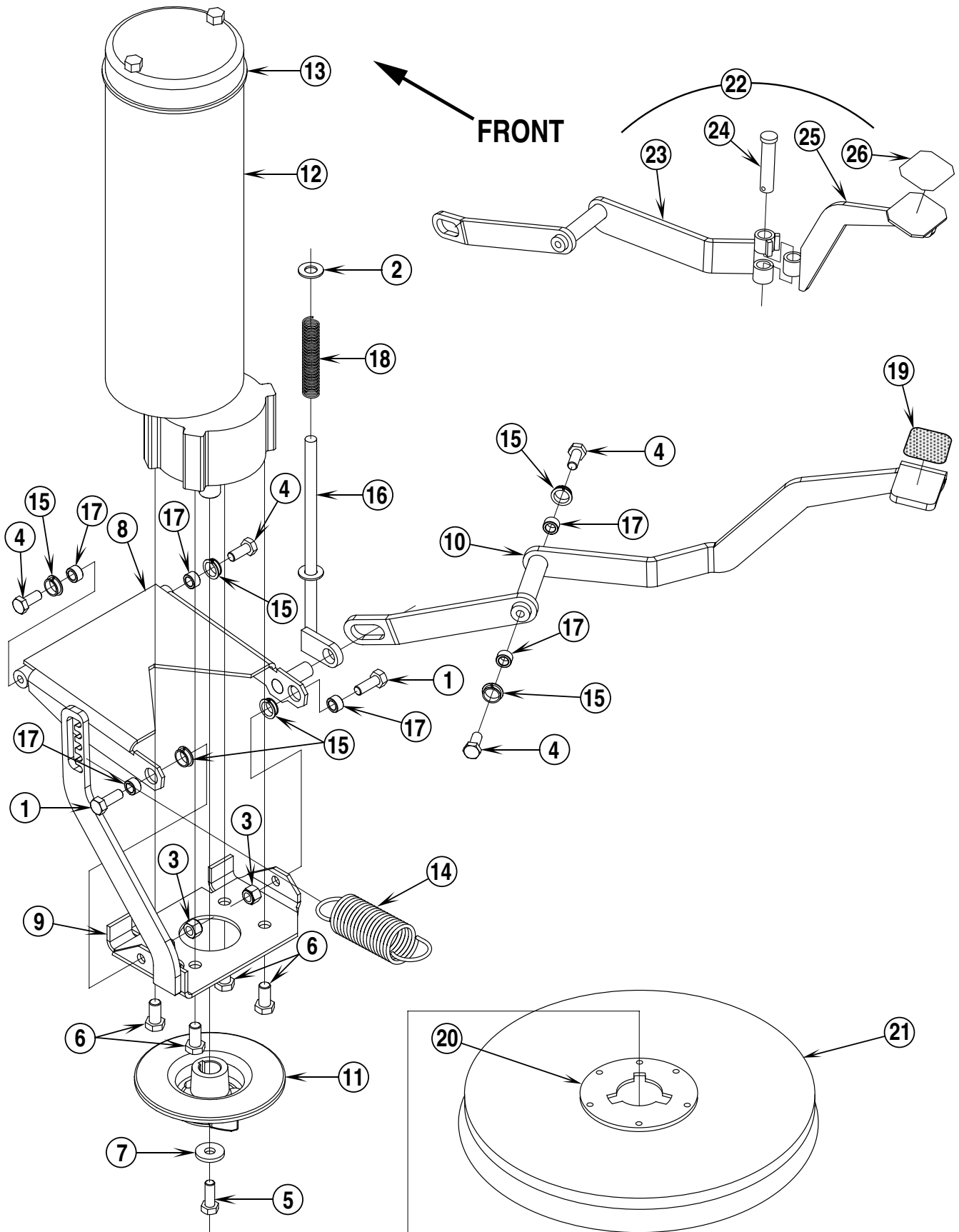
Item	Ref. No.	Qty	Description
1	56002850	3	Nut, Hex Nyl Loc-Thin SS 1/4-20
2	56002859	8	Wsh, Flt SAE SS 1/4
3	56002901	4	Scr, Hex Hd SS 1/4-20 x 1.50
4	56003047	6	Scr, Hex Hd SS 1/4-20 x .62
5	56003125	2	Scr, Hex Thd to Hd SS 1/4-20 x 1.50
6	56131601	1	Clamp, Hose SAE #16
7	56209547	1	Clamp, One Ear, 1.75
8	56261266	1	Plug Tube
9	56209506	1	Drain Plug
10	56262574	1	Hose Assembly
11	56302141	1	Vacuum Motor Duct
12	56302142	1	Float Duct
13	56302165	1	Gasket
14	56302182	1	Gasket
15	56302202	1	Recovery Tank
16	56302214	1	Hinge
17	56302553	1	Gasket
18	56302233	1	Hose
19	56302242	1	Vacuum Motor Assembly
	56324491	1	Vacuum Motor
*	56302241	1	Filter, Capacitor
*	56462360	1	Conn. W.P. Male 2 Way
*	56459264	2	Terminal W.P. Male (for 56462360)
*	56459263	2	Seal W.P. (for 56462360)
*	56409688	2	Splice, Parallel
*	56900904	4"	Tubing, Heatshrink (10.16 cm)
*	56503003	1	Carbon Brush Set for Vac Motor
20	56324497	2	Float Cage
21	56329145	1	Clamp, Hose SAE #24
22	56391690	1	Ball, Float
23	56391807	1	Foam, Acoustical
24	56003145	4	Nut, Hex Jam 1/4-20
25	56477613	1	Tie, Cable
26	56486112	1	P-Clamp

\* = Not Shown



97-1	<b>SQUEEGEE SYSTEM</b>	<b>BOOK E</b>		
02-8	<b>BA 430</b>	<b>E</b>	<b>2.6.1</b>	<b>11</b>

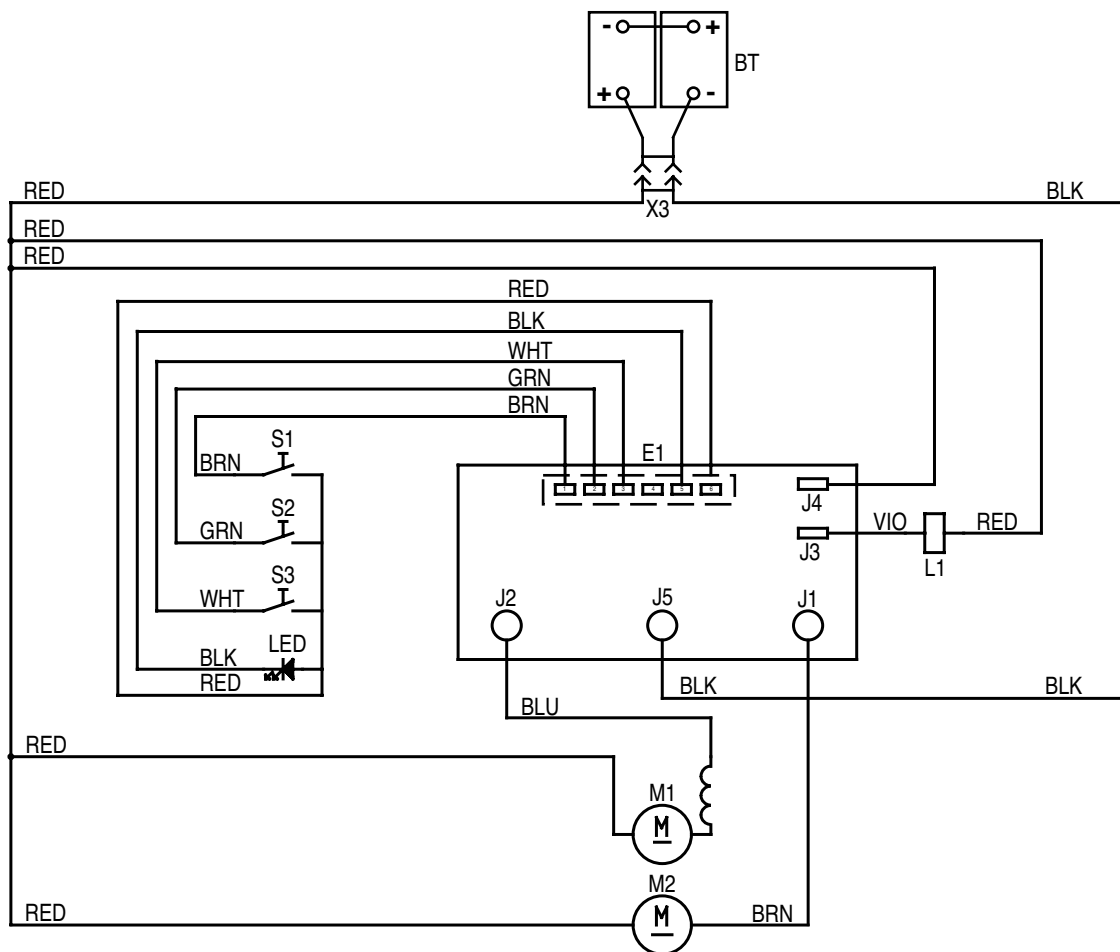
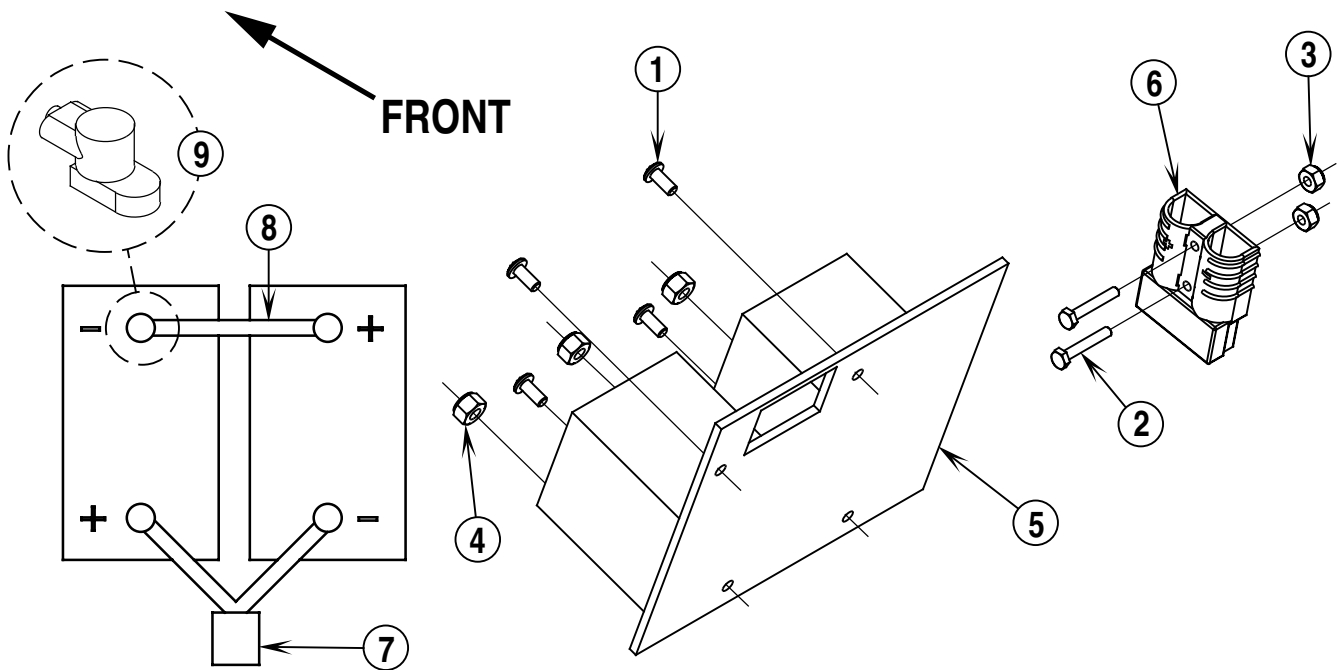
Item	Ref. No.	Qty	Description
1	56003332	3	Pin, Cotter Hair .04 x .18
2	56003391	2	Pin, Groove Type E .09 x .62
3	56009123	2	Nut, Push Cap 3/8
4	56302127	1	Squeegee Mount
5	56302131	1	Pivot Bracket
6	56302153	1	Gas, Spring ( <b>cylinder</b> )
7	56302162	1	Cable Assembly ( <b>squeegee lift</b> )
8	56302164	2	Bearing, Flange
9	56003191	1	Clevis, Pin .50 x 3.00
10	56003192	3	Clevis, Pin .250 x 2.00
11	56302190	1	Handle ( <b>squeegee lift</b> )
12	56003222	1	Pin, Cotter Hair
	56302145	1	Squeegee Assembly ( <b>#13-30</b> )
13	56002098	2	Wsh, Flt SAE 1/4
14	56003037	2	Scr, Pan Phil SS 1/4-20 x .25
15	56003067	2	Scr, Pan Phil SS 1/4-20 x 1.00
16	56003269	2	Ring, Retainer
17	56009047	4	Wsh, Flt .39 x .62 x .06
18	56009048	2	Nut, Wing Loc 1/4-20
19	56105569	2	Blade, Molded
20	56302146	1	Squeegee Tool
21	56302323	1	Channel, Squeegee Blade
22	56302324	1	Retainer, Squeegee Blade
23	56324499	2	Wheel 3.00
24	56370711	2	Nut, Thumb
25	56387376	2	Roller Assembly
26	56400613	1	Gasket
27	56400614	2	Gasket
28	56003119	2	Scr, Pan Phil SS 1/4-20 x .38
29	56302316	2	Squeegee Housing
30	56302315	2	Squeegee Cartridge
31	56302180	1	Channel, Squeegee Blade ( <b>before February 2000</b> )
32	56302181	1	Retainer, Squeegee Blade ( <b>before February 2000</b> )
33	56002859	2	Wsh, Flt SAE SS 1/4
	56302197	A/R	Squeegee Blade Cartridge ( <b>for machines built before February 2000</b> ) ( <b>items 14, 15, 19, 26, 27, 31 &amp; 32</b> )
	56302326	A/R	Squeegee Cartridge Assembly ( <b>for machines built after January 2000</b> ) ( <b>items 14, 15, 18, 19, 21, 22, 28, 29, 30 &amp; 33</b> )



97-1	<b>BRUSH DRIVE SYSTEM</b>	<b>BOOK E</b>		
01-2	<b>BA 430</b>	<b>E</b>	<b>2.6.1</b>	<b>13</b>

Item	Ref. No.	Qty	Description
1	56002037	2	Scr, Hex Hd 5/16-18 x .88
2	56002063	1	Wsh, Flt SAE 3/8
3	56002701	2	Nut, Hex Nyl Loc 5/16-18
4	56002956	4	Scr, Hex Hd 5/16-18 x .75
5	56003335	1	Scr, Hex Loc SS 5/16-18 x .88
6	56003338	4	Scr, Hex Loc SS 3/8-16 x .75
7	56009122	1	Wsh, Flt .34 x .93 x .12
8	56302108	1	Linkage
9	56302112	1	Motor Mount
10	56302122	1	Lift Weldment ( <b>obsolete order item #22 to replace</b> )
11	56302130	1	Drive Lug <b>TSB 682</b>
12	56302144	1	Brush Drive Motor
13	56302155	1	Gasket
14	56302160	1	Spring, Extension ( <b>spring hooks into second notch from bottom at both ends</b> )
15	56302164	6	Bearing, Flange
16	56302172	1	Rod
17	56320595	6	Bushing
18	56452141	1	Spring
19	56302173	1	Grip Surface
20	56506006	1	Clutch Plate ( <b>Plastic / NP-92</b> )
21	56505910	1	Short-Trim Pad Holder ( <b>optional</b> )
**	56505918	1	MidLite Grit™ 180 Brush (old style)
**	56505917	1	Mid Grit™ 240 Brush (old style)
**	56505913	1	AgLite™ 500 Brush (old style)
**	56505914	1	Prolene Brush (old style)
**	56505915	1	ProLite™ Brush (old style)
**	56505916	1	Union Mix Brush (old style)
**	56505270	1	Level-Set Pad Holder (old style)
22	56302321	1	Pedal Assembly (includes items 23-26) ( <b>after January 2000</b> )
23	56302325	1	Lower Pedal Weldment
24	56003620	1	Clevis Pin
25	56302314	1	Upper Pedal Weldment
26	56721255	1	Pad, Foot Pedal

\*\* = Optional



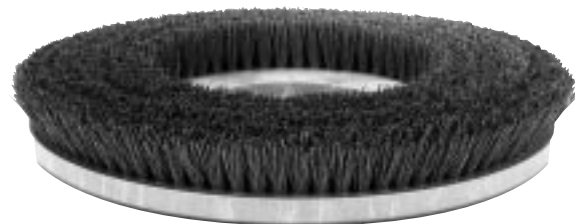
97-1	<b>ELECTRICAL SYSTEM / WIRING DIAGRAM</b>	<b>BOOK E</b>		
01-10	<b>BA 430</b>	<b>E</b>	<b>2.6.1</b>	<b>15</b>

Item	Ref. No.	Qty	Description
1	56009144	4	Scr, Pan Nylon Slot 8-32 x .38
2	56002582	2	Scr, Hex Hd 6-32 x .88
3	56002830	2	Nut, Hex Nyl Loc 6-32
4	56002873	3	Nut, Hex Nyl Loc 10-32
5	56302219	1	Controller Assembly <b>TSB 785</b>
6	56324305	1	Machine Battery Connector Housing ( <b>part of Wiring Harness #56302237</b> )
*	56302179	2	Replacement Contact for 56324305
7	56302174	1	Battery Charger Connector ( <b>w/cables</b> )
*	56302166	2	Replacement Contact for 56302174
8	56302225	1	Battery Cable
9	56302194	4	Battery Terminal Cover
*	56302198	1	Optional Hour Meter Kit
*	56302196	1	Optional Battery Cart
*	56302237	1	Wiring Harness
*		1	Automatic Battery Charger 24V / 10A ( <b>not included</b> )
BT		A/R	Battery, 24V ( <b>not included</b> )
E1	56302219	1	Controller <b>TSB 785</b>
LED	56302240	1	LED Indicator Assembly ( <b>low battery</b> )
L1	56302226	1	Solenoid, Solution Valve ( <b>before SN1526501</b> ) <b>TSB 785</b>
	56302013	1	Solenoid, Solution Valve ( <b>after SN1526500</b> ) <b>TSB 785</b>
M1	56324489	1	Vacuum Motor
M2	56302144	1	Brush Motor
S1	56340199	1	Brush Switch
S2	56340199	1	Vacuum Switch
S3	56340199	1	Solution Switch
X3	56324305	1	Machine Battery Connector Housing ( <b>part of Wiring Harness #56302237</b> )
*	56302179	2	Replacement Contact for 56324305

The versatile BA 430 scrubs and polishes all hard floor surfaces and to accomplish this, Nilfisk manufactures brushes and pad holders that will give you the best possible performance between machine and floor. Following are descriptions of our materials and their application when used on the BA 430.

- Union Mix:** Medium grade natural fibers for polishing finished floors with standard-speed equipment. Recommended for use in place of white pads.
- ProLite:** Bristles are made from light-duty polypropylene for general scrubbing when you do not want to scratch or remove finish from the floor. Recommended for use in place of red pads.
- Prolene:** Polypropylene material for medium-duty scrubbing on concrete, terrazzo and vinyl floor tile. Recommended for use in place of green or blue pads.
- Magna Grit:** For extreme heavy-duty scrubbing or stripping of floors. This brush has extra large diameter silicon carbide grit impregnated synthetic bristles. Recommended for use in place of black pads.
- Dyna Grit:** For aggressive, heavy-duty scrubbing or stripping of floors. Recommended for use in place of brown pads.
- MidLite Grit:** For general purpose scrubbing of sealed or unsealed concrete, stone, terrazzo, quarry tile and other resilient hard floor surfaces. Recommended for use in place of green or blue pads.
- MidGrit:** For general purpose scrubbing when you need a lighter action for sealed or unsealed concrete, stone, terrazzo, quarry tile and other resilient hard floor surfaces. Recommended for use in place of green or blue pads.
- AgLite Grit:** For light scrubbing when used wet; buffing or polishing when used dry on urethane coated, sealed concrete or other resilient hard surface floors. Recommended for use in place of red or white pads.
- Short Trim Pad Holder:** Made with a structural foam block and center ring for correct pad centering. It has a "shower feed" design for getting solution to the floor.

Short-Trim Pad Holder .....	56505910
Level-Set Pad Holder .....	56505270
MidLite Grit™ 180 Brush .....	56505918
MidGrit™ 240 Brush .....	56505917
MagnaGrit™ 46 Brush .....	56505911
DynaGrit™ 80 Brush .....	56505912
AgLite Grit™ 500 Brush .....	56505913
Prolene Brush .....	56505914
ProLite™ Brush .....	56505915
Union Mix Brush .....	56505916



**DANMARK**

Nilfisk-Advance Nordic A/S  
Sognevej 25 - Box 344  
DK-2605 Broendby  
☎ 43 23 83 50 – Fax 43 42 15 95

**NORGE**

Nilfisk-Advance AS  
Enebakkvn, 119, 0680 Oslo, Postboks 196, Manglerud,  
0612 Oslo  
☎ 22 08 63 50 – Fax 22 08 63 63  
Distriktsrepresentanter over hele landet

**SVERIGE**

Nilfisk-Advance AB  
Sjöbjörnsvägen 5, 117 67 Stockholm  
☎ 085 55 944 00 – Fax 085 55 944 30

**FINLAND/ SUOMI**

BERNER Ltd. Facotek Department  
Etäläranta 4B, 00130 Helsinki  
☎ +358 9 1345 1382

**AUSTRALIA**

Nilfisk-Advance Pty. Ltd.  
ACN 003 762 623  
Head office: 17 Leeds Street, Rhodes, N. S. W. 2138  
☎ (02) 9736 1244 – Fax (02) 9736 3910  
Customer Responce Centre:  
☎ 1 800 011 013

**BELGIQUE / BELGIË/ LUXEMBOURG**

Nilfisk-Advance s.a./n.v.  
Doornveld/ Sphere Business Park  
Industrie Asse 3, nr 11 – bus 41  
1731 Zellik-Asse  
☎ (02) 467.60.50 Fax (02) 463.44.16

**CANADA**

Nilfisk-Advance Ltd.  
396 Watline Avenue  
Mississauga, Ontario L4Z 1X  
☎ (905) 712-3260 – Fax (905) 712-3255

**DEUTSCHLAND**

Nilfisk-Advance AG  
Siemensstraße 25-27  
25462 Rellingen  
☎ (041 01) 3990 – Fax ( 04101) 399191  
Zentraler Kundenservice  
☎ für die Industrie: 0180 535 67 97  
☎ Institutionen und Gebäudereiniger: 0180 500 11 70

**FRANCE**

Nilfisk-Advance S.A.  
BP 246  
91944 Courtaboeuf Cedex  
☎ (01) 69.59.87.00 Télécopie (01) 69.59.87.01

**HONG KONG**

Nilfisk-Advance Ltd.  
2001, 20/F HK Worsted Mills  
Industrial Building  
31-39 Wo Tong Tsui Street  
Kwai Chung, N.T.  
☎ 2427 59 51 – Fax 2487 5828

**IRELAND**

Nilfisk-Advance Ltd.  
28 Sandyford Office Park  
Dublin 18  
☎ +353 1 2943838 – Fax +353 1 2943845

**JAPAN**

Nilfisk-Advance Inc.  
3-4-9 Chigasaki Minami  
Tsuzuki-Ku Yokohama 224  
☎ 045-942-7741 – Fax 045-942-6545

**MALAYSIA**

Nilfisk-Advance Sdn Bhd  
Lot 2, 1<sup>st</sup>. Floor  
Lorong 19/1A  
46300 Petaling Jaya  
Selangor Darul Ehsan  
☎ 03-7568188 /03-7568189 /03-7568388 – Fax 03-7566828

**NEDERLAND**

Nilfisk-Advance B.V.  
Flevolaan 7, Postbus 341  
1380 AH Weesp  
☎ 0294-462121 – Fax 0294-430053

**NEW ZEALAND**

Nilfisk-Advance Limited  
477 Great South Road, Penrose  
Auckland  
☎ (09) 525 0092 – Fax (09) 525 6440

**SCHWEIZ / SUISSE**

Nilfisk-Advance AG  
Ringstrasse 19, 9533 Kirchberg/Wil  
☎ 719 23 52 83 – Fax 719 23 84 44

**SINGAPORE**

Nilisk-Advance Pte. Ltd.  
22, Woodlands Industrial Park E1  
Singapore 757740  
☎ (65) 759 9100 – Fax (65) 759 9133

**TAIWAN**

Nilfisk-Advance Ltd.  
1 F, No.23, Lane 132, Sec. 2  
Ta An Road, Taipei  
☎ 700 22 68 – Fax 784 08 43

**UNITED KINGDOM**

Nilfisk-Advance Limited  
Newmarket Road  
Bury St. Edmunds  
Suffolk IP 33 3SR  
☎ (01284) 763163 – Fax (01284) 750562

**USA**

Nilfisk-Advance Inc.  
14600 21<sup>st</sup> Avenue North  
Plymouth, MN 55447-3408  
☎ +1 800 989 2235 – Fax 1 800 989 6566

Nilfisk-Advance of America, Inc.  
300 Technology Drive  
Malvern, PA 19355  
☎ (610) 647 647-6427

**ÖSTERREICH**

Nilfisk-Advance GmbH  
Vorarlberg Allee 46  
1230 Wien  
☎ 1 616 58 30 – Fax 1 616 58 30 40

**ESPAÑA**

Nilfisk-Advance, S.A.  
Torre D'Ara  
Passeig del Rengle, 5 Pl.9-10  
E-08302 – Mataró (Barcelona)  
☎ Tel. 93 741 24 00 – Fax: 93 757 80 20  
Central atención al cliente: 902 200 201  
[nilfisk@nilfisk-advance.es](mailto:nilfisk@nilfisk-advance.es) – [www.nilfisk-advance.com](http://www.nilfisk-advance.com)  
Distribuidores y Servicio Técnico en toda España y Andorra

**ITALIA**

Nilfisk-Advance Italia Spa  
Località Novella Terza  
26862 Guardamiglio (LO)  
Italy  
☎ +39 0377 414067-54 – Fax +39 0377 414097  
[www.nilfisk-advance.com](http://www.nilfisk-advance.com)

**PORTUGAL**

Nilfisk-Advance Lda.  
Rua Cândido de Figueiredo, 91-i, 1500-133 LISBOA  
☎ 01/7784142 – Fax 01/7785613  
Porto 02/526766 – Fax 02/520739  
Açores 096/628092/3 – Fax 096/628129  
Madeira 091/228965 – Fax 091/228796

**GREECE**

Embiom S.A.  
Λεωφ. Βουλιαγμένης 60  
Αργυρούπολη  
164 52 Αθήνα  
☎ 9950613 - Fax 9951680



# Material composition of the Nilfisk BA 430

