



Electronic Service Manuals

This electronic document is provided as a service to our customers. We do not create the contents of the information contained in this document. Should you have detailed questions pertaining to the information contained in this document, you may contact Michco, or the manufacturer which provided the original information in this electronic deliverable. Michco's only part in this electronic deliverable was the electronic assembly process. By providing this manual on line we are not guaranteeing parts availability.

You may contact Michco through the following methods:

Phone (517) 484-9312 or (800) 331-3339

2011 N. High St. -- Lansing, Michigan -- 48906

Fax: (517) 484-9836

Email: CustServe@Michco.com

Web site: www.Michco.Com

Parts Web site: www.FloorMachineParts.Com

Order Parts on Line at:

www.FloorMachineParts.Com

Directly to Parts & Service:

By Email: **Shop@Michco.com**

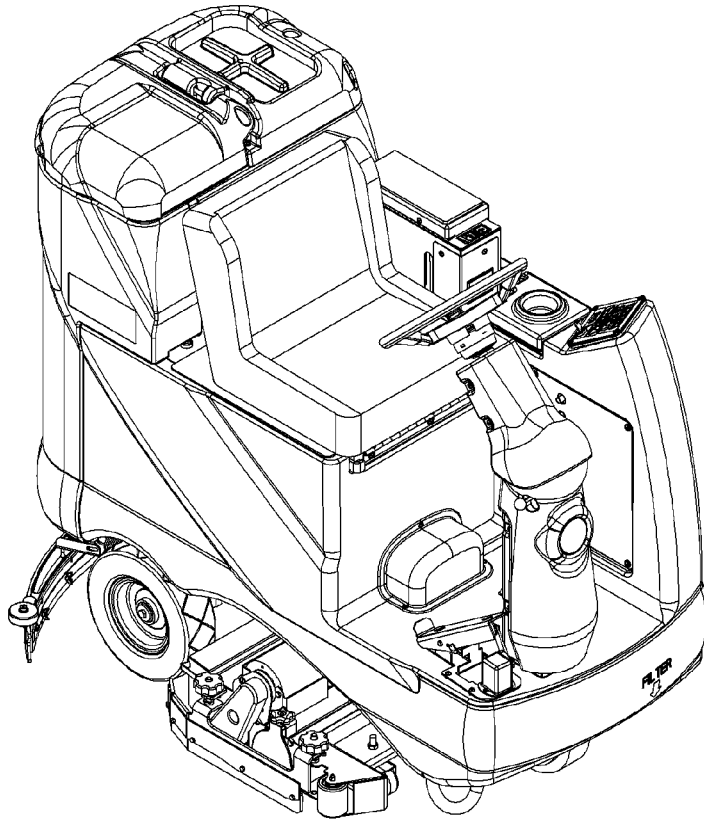
By Fax: (517) 702-2041

By Voice: Use numbers above.

Serving the Cleaning Industry Since 1922

Notice: All copyrighted material remains property of original owners, all trademarks are property of respective owners. Manuals are subject to Manufacturer's reproduction limitations. Originals or reproductions were provided by manufacturers through a request. We make no warranty as to the correctness of information provided in this document and you assume all risk. By placing these manuals on line we are not declaring our corporation to be an manufacturer authorized dealer or provider, please check our web site for authorized manufacturers we represent.

Adhancer™



PARTS LIST

Advance Models: 56316025 (R28-C), 56316026 (R32-C)



Advance
by Nilfisk-Advance

7/06 revised 9/08 FORM NO. 56042470

Item	Ref. No.	Qty	Description
Kits			
**	56314753	1	Kit, On-Board Charger TSBUS2004-872 / TSBUS2008-984
**	56316251	1	Kit, OnBoard Charger, AGM TSBUS2008-984
**	56314698	1	Kit, OnBoard Charger, GEL TSBUS2008-984
**	56314301	1	Kit, Seat Armrests
**	56314302	1	Kit, Warning Beacon NOTE 1
**	56314308	1	Kit, Scrub-N-Vac Tool W/Pump NOTE 1
**	56314312	1	Kit, Seatbelt NOTE 1
**	56314313	1	Kit, Headlight NOTE 1
**	56397453	1	Kit, Battery Fill Indicator
**	56314981	1	Kit, Battery Watering NOTE 1
**	56314474	1	Kit, Deck 2400D NOTE 1
**	56314475	1	Kit, Deck 2400C NOTE 1
**	56314476	1	Kit, Deck 2600D NOTE 1
**	56314477	1	Kit, Deck 2600C NOTE 1
**	56314478	1	Kit, Deck 2810D NOTE 1
**	56314479	1	Kit, Deck 2810C NOTE 1
**	56314717	1	Kit, Deck 3210D NOTE 1
**	56314481	1	Kit, Deck 3210C NOTE 1
**	56314338	1	Kit, Dual Vac Motor NOTE 1
28" Squeegee Blade Kits			
**	56314303	1	Kit, Standard Squeegee Blade NOTE 2
**	56314304	1	Kit, Linatex Squeegee Blade NOTE 2
**	56314305	1	Kit, Neoprene Squeegee Blade NOTE 2
32" / BR 800S Trio EDS Squeegee Blade Kits			
**	56314060	1	Kit, Standard Squeegee Blade NOTE 2
**	56314061	1	Kit, Linatex Squeegee Blade NOTE 2
**	56314062	1	Kit, Neoprene Squeegee Blade NOTE 2
Disk Deck Blade Kits			
**	56316194	1	Kit, Side Skirt NOTE 3
Optional Batteries			
**#	56391391	6	Battery, 6V, 305A/H TSBUS2008-984
**#	56206079	6	Battery, 6V, 235A/H TSBUS2008-984
**#	56315959	6	Battery, 6V 315A/H AGM TSBUS2008-984
Optional Battery Chargers			
**#	56395101	A/R	Battery Charger, 36VDC, Auto, 20Amp, 120VAC/60HZ TSBUS2008-984
**#	56388502	A/R	Battery Charger, 36VDC, Auto, 25Amp, 120VAC/60HZ TSBUS2008-984
**#	56388120	A/R	Battery Charger, 36VDC, Auto, 36Amp, 120VAC/60HZ TSBUS2008-984
**#	56372190	A/R	Battery Charger, 36VDC, 20Amp, 230VAC/50HZ TSBUS2008-984
**#	56388119	A/R	Battery Charger, 36VDC, 36Amp, 230VAC/50HZ TSBUS2008-984
Accessories			
**	56409441	A/R	Programmer, 1311 User
**	56409823	A/R	Programmer Cable
**#	56044387	A/R	Literature Pack

** = Optional, Not Included

= Revised or new since last update

NOTE 1: Replacement parts for the kits listed above can be found on each kit's associated instruction sheet.

NOTE 2: All squeegee blade kits include both front and rear squeegee blades.

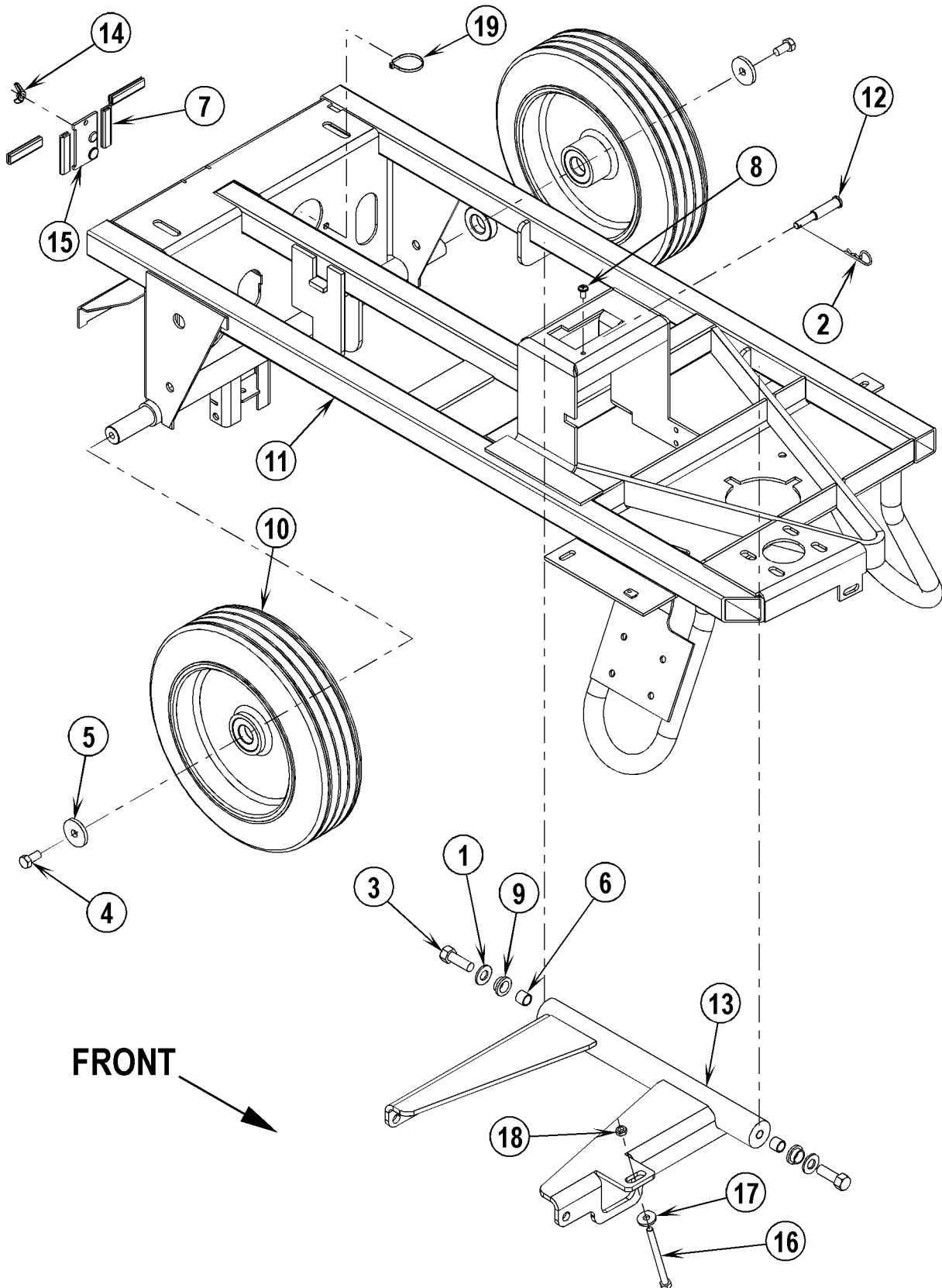
NOTE 3: All deck blade kits include all skirts required for the scrub deck.

DESCRIPTION	PAGE
Chassis System	2-3
Decal System	4-5
Detergent Injection System (AXP/EDS)	6-7
Drive & Brake Pedal Assemblies.....	8-9
Electrical Panel Assembly	10-11
Front Wheel Assembly	12-13
Recovery System.....	14-15
Scrub System.....	16-17
Skirt Assemblies.....	18-19
Solution System	20-21
Squeegee Assembly	22-23
Squeegee System.....	24-25
Steering Column Assembly	26-27
Battery Watering System.....	28-29
On-Board Charger Kit	30-31
Wiring Diagram	32-33

WHEN ORDERING PARTS

- * Use the 8 digit numbers from the "Ref. No." columns in this parts list.
- * Specify the model and serial number of the machine.
- * Use the space below to record the model and serial number for future reference.

Model _____ Serial No. _____



06-7

CHASSIS SYSTEM

07-2

Adhancer™**3**

Item	Ref. No.	Qty	Description
1	56001879	2	Wsh, Flt SAE 1/2
2	56002959	1	Pin, Cotter Hair
3	56003412	2	Scr, Hex Nyl Loc M12-1.25 x 35mm
4	56003442	2	Scr, Hex Nyl Loc M10-1.50 x 20mm
5	56367117	2	Wsh, Flt .406 x 1.50 x .1875
6	56367206	2	Bushing
7	56412122	4	Trim Edge
8	56009062	1	Scr, Pan Phil Thd Form 1/4-20 x .50
9	56420160	2	Bearing, Flange
10	56412341	2	Assembly, Wheel and Bearing (each assembly includes two bearings)
	56412243	4	Bearing, Ball
**	56412341	2	Wheel Assy, Scrubber
11	56314092	1	Weldment, Chassis
12	56314152	1	Pin, Actuator
13	56314495	1	Linkage, Arm Weldment
14	56002084	1	Nut, Wing 1/4-20
15	56314537	1	Squeegee Stop Bracket
16	56002461	1	Scr, Hex Thd To Hd 5/16-18 x 4.00
17	56009122	1	Wsh, Flt .344 x .938 x .125
18	56009086	1	Nut, Hex Jam 5/16-18
19	56478246	1	Tie, Cable
*	56478246	5	Tie, Cable
*	56477613	9	Cable Tie

* = Not Shown

** = Optional

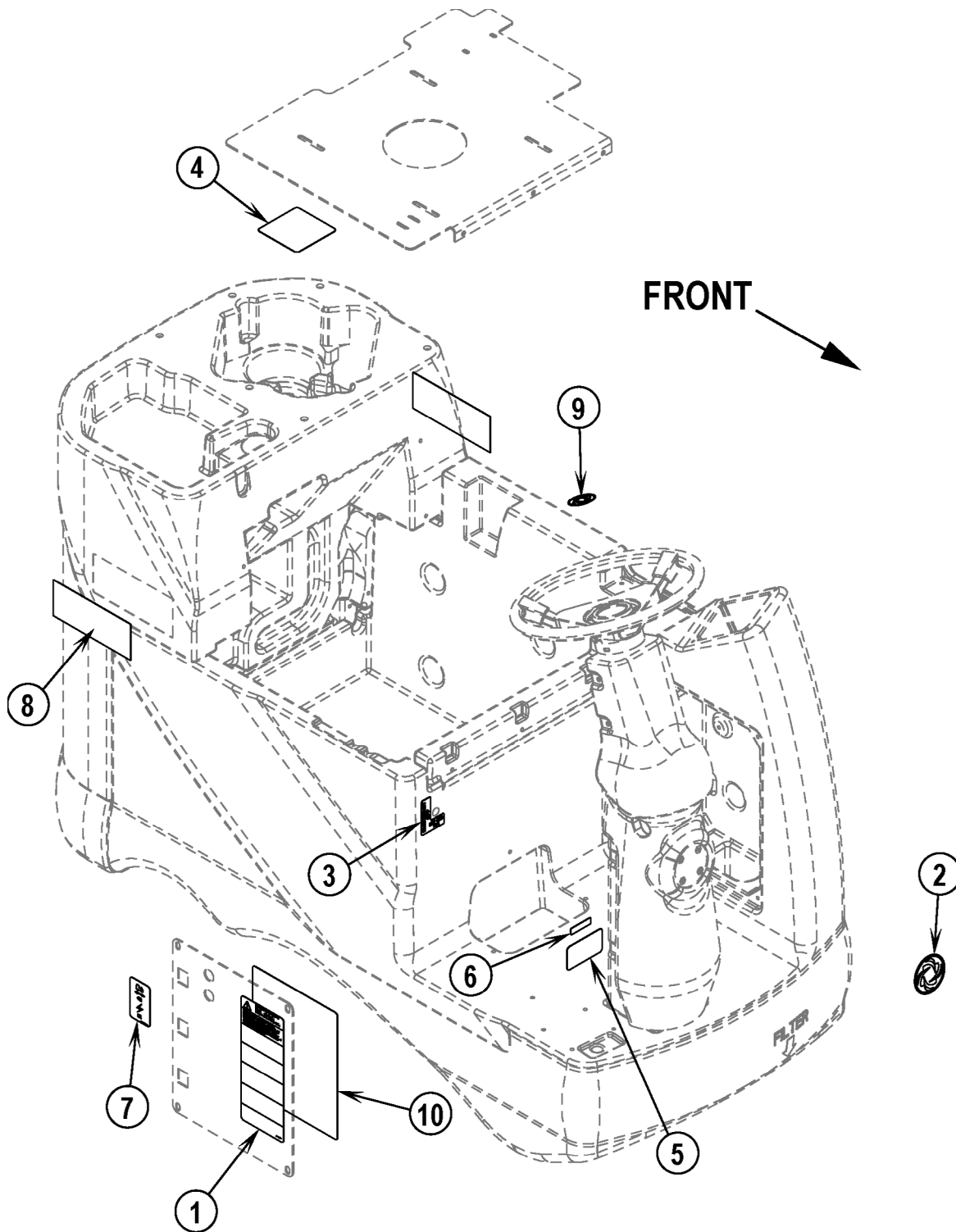
DECAL SYSTEM

06-7

4

Advancer™

08-3



06-7

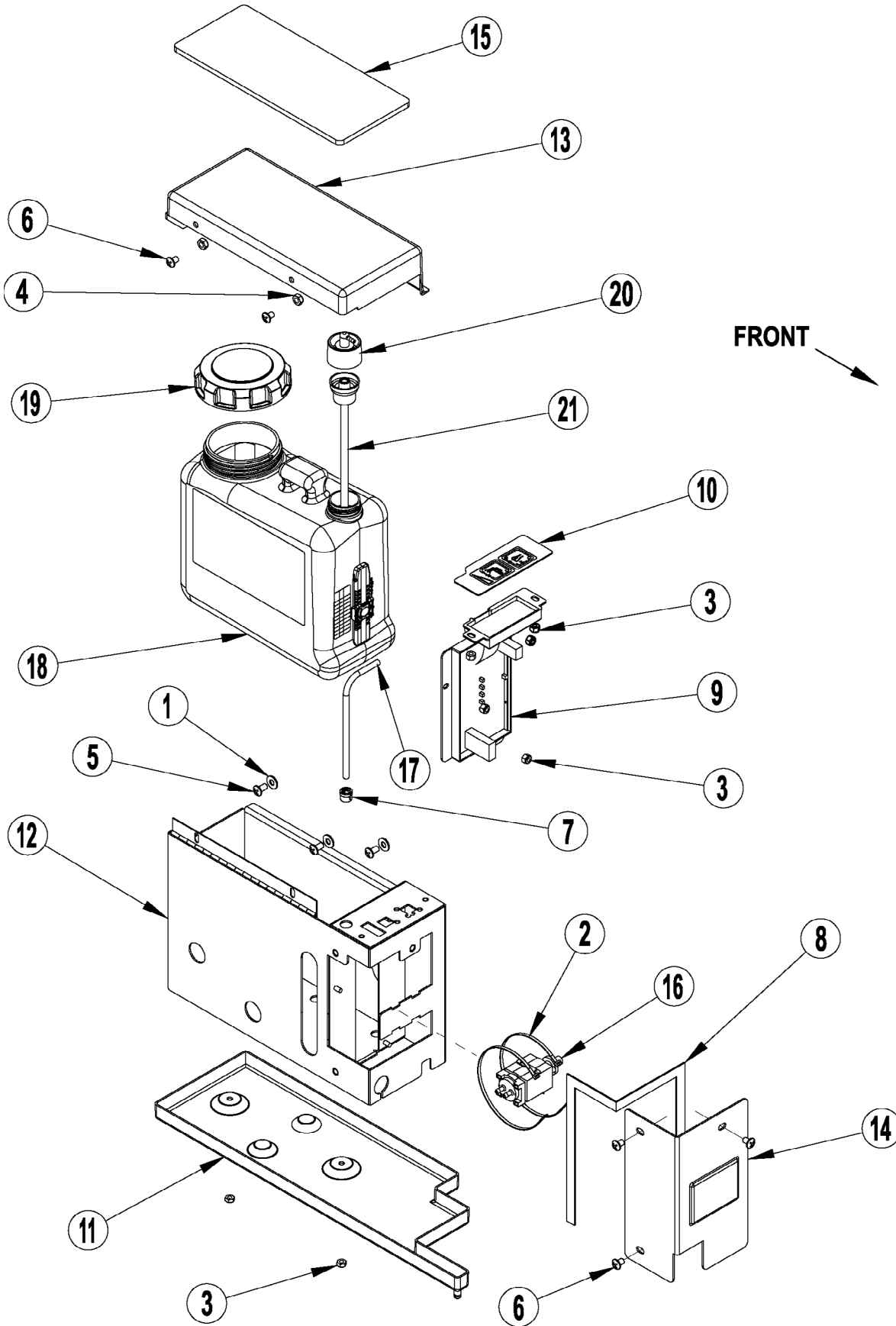
DECAL SYSTEM

08-9

Adhancer™

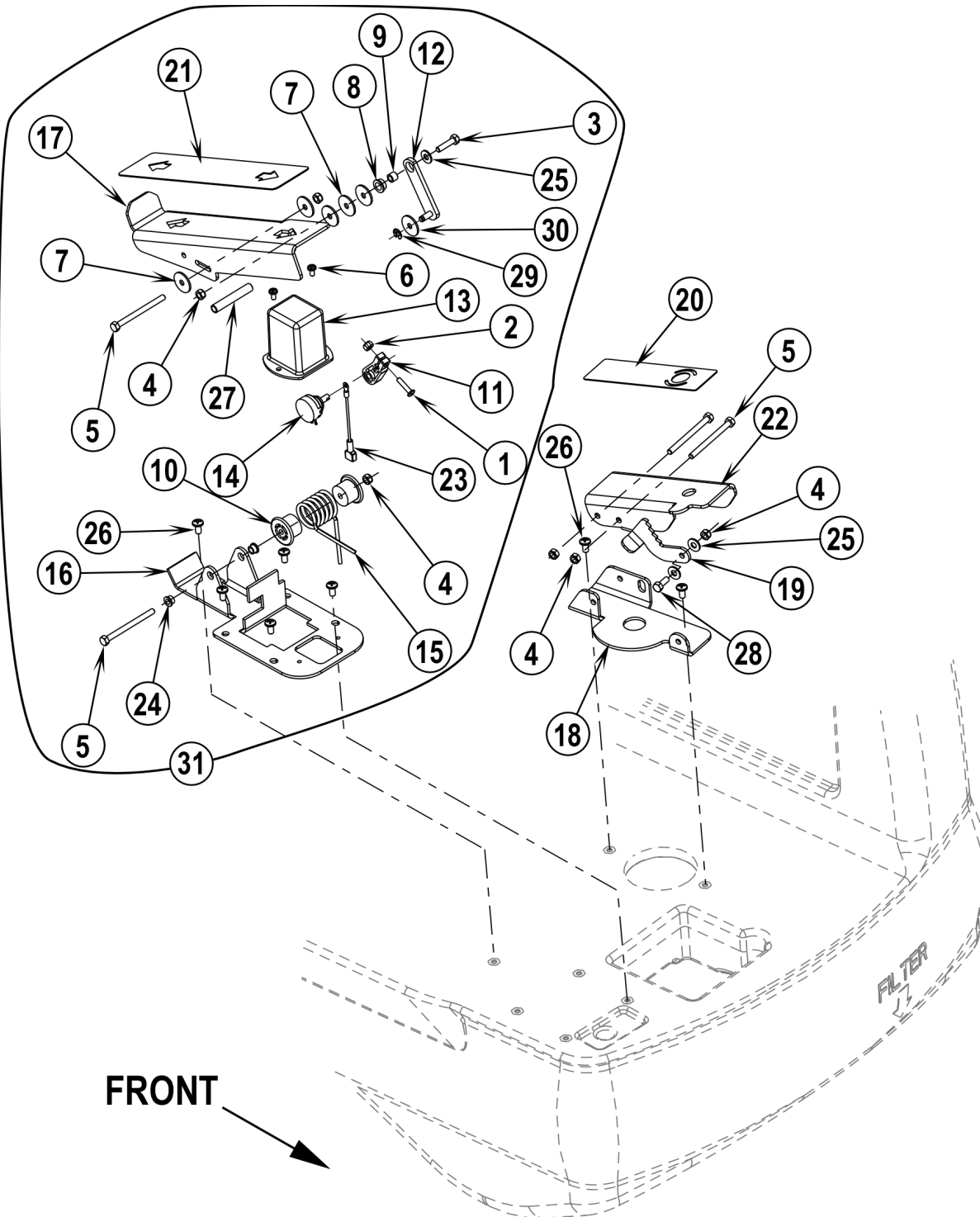
5

Item	Ref. No.	Qty	Description
1	56014601	1	Decal, Caution
2	56015276	1	Decal, Logo
3	56015179	1	Decal, Emergency
4	56015168	1	Decal, Battery Wiring
5	56016401	1	Decal, Parking Brake
6	56014450	1	Decal, Patent Number
7	56016403	1	Decal, Circuit Breaker
8	56016447	2	Decal, Adhancer
9	56015281	1	Decal, Logo 2 Inch
10	56016746	1	Decal, Ladder Diagram



06-7	DETERGENT INJECTION SYSTEM (AXP/EDS)		
08-3	Adhancer™		7

Item	Ref. No.	Qty	Description
	56316216	1	Detergent Injection Assembly (items 1-21)
1	56009025	3	Wsh, Flt .266 x .750 x .036
2	56478523	2	Tie, Cable
3	56002832	8	Nut, Hex Nyl Loc-Thin 10-24
4	56002840	2	Nut, Hex Nyl Loc-Thin 1/4-20
5	56002145	3	Scr, Pan Phil 1/4-20 x .50
6	56003580	5	Scr, Pan Phil SS 1/4-20 x .38
7	56003699	1	Bushing, 1/4 ID Snub
8	56200754	1	Gasket, Strip
9	56316217	1	Control Assembly
10	56314937	1	Control Decal
11	56314939	1	Tray, Detergent
12	56314944	1	Weldment, Detergent Box
13	56314945	1	Cover, Detergent
14	56314946	1	Cover, Pump
15	56314953	1	Pad, Detergent
16	56314984	1	Pump, Detergent
17	56314991	1	Hose, Chem Resistant 14"
18	56315502	1	Chemical Bottle Assy.
	56315511	1	Indicator Assy
**	56316081	A/R	AXP 3n1 Adhancing Agent, 4 pack
**	56315503	A/R	Chem Bottle Assy (18-21)
19	56315517	1	Cap, Raw
20	56315523	1	Cap, Dry Break, 1/8 Barb, 90°
21	56315527	1	Insert, Dry Break



06-7

DRIVE & BRAKE PEDAL ASSEMBLIES

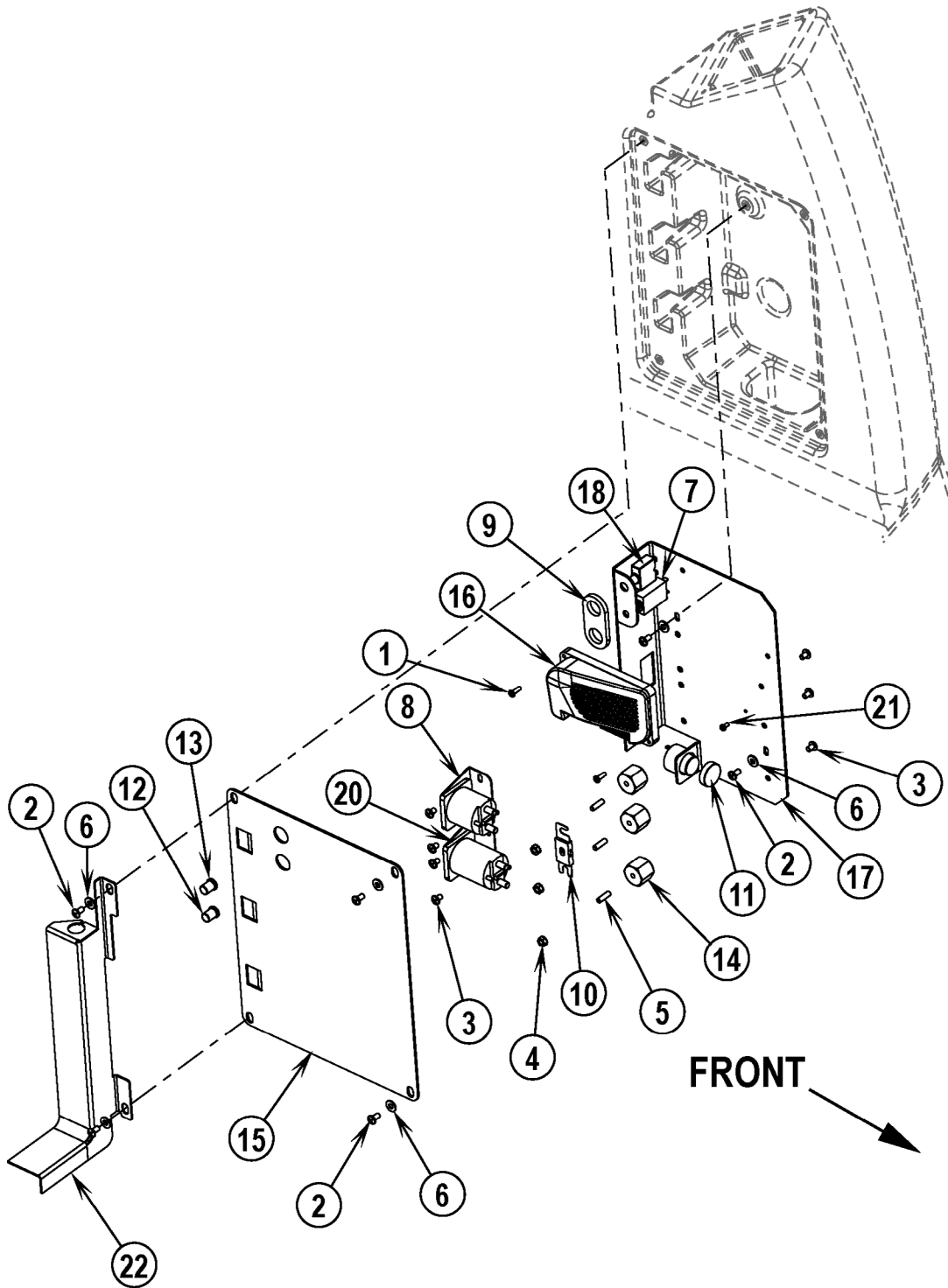
08-9

Adhancer™**9**

Item	Ref. No.	Qty	Description
1	56002733	1	Scr, Pan Phil 10-24 x .88
2	56002768	1	Nut, Hex Nyl Loc 10-24
3	56003358	1	Scr, Hex M6-1.00 x 25mm
4	56003403	6	Nut, Hex Nyl Loc M6-1.00
5	56003428	4	Scr, Hex M6-1.00 x 75mm
6	56009030	2	Scr, Pan Phil Thd Form 10-24 x .38
7#	56009060	5	Wsh, Flt SS .260 x 1.000 x .074
8	56324505	1	Bearing, Flange
9#	56380440	1	Bushing, M6 x .375 x .295
10#	56380438	2	Spacer, Spring
11	56409471	1	Lever, Throttle
12	56409610	1	Link Weldment
13	56412094	1	Housing, Potentiometer
14	56454740	1	Potentiometer, 5K (R1)
15	56314037	1	Spring, Torsion
16#	NA	1	Bracket, Foot Pedal NOTE 1
17#	NA	1	Foot Pedal NOTE 1
18#	56314121	1	Bracket, Brake (Before SN 2062591) NOTE 2
#	56314677	1	Bracket, Brake (After SN 2062591)
19	56314122	1	Lock, Brake
20	56314138	1	Mat, Pedal
21	56314176	1	Mat, Pedal
22#	56314463	1	Pedal Weldment (Before SN 2062591) NOTE 2
#	56314678	1	Pedal Weldment (After SN 2062591)
23	56412331	1	Wire Assy.
24	56756318	2	Bearing, Flange
25#	56002098	4	Wsh, Flt SAE 1/4
26	56003119	7	Scr, Pan Phil SS 1/4-20 x .50
27#	56380439	1	Bushing
28	56003174	1	Scr, Hex Thd to Hd M6-1.0 x 16mm
29	56003268	1	Ring, Ret Ext Type E Reinf. 0.25 Dia
30#	56009025	1	Wsh, Flt .266 x .750 x .036
31#	56413421	1	Pedal Assy

= Revised or new since last update

NOTE 1: If you need to replace either of these items please order Pedal Assembly 56413421.**NOTE 2:** If you need to replace either of these items on machines before SN (2062591) please order Brake Pedal Assembly 56314676.

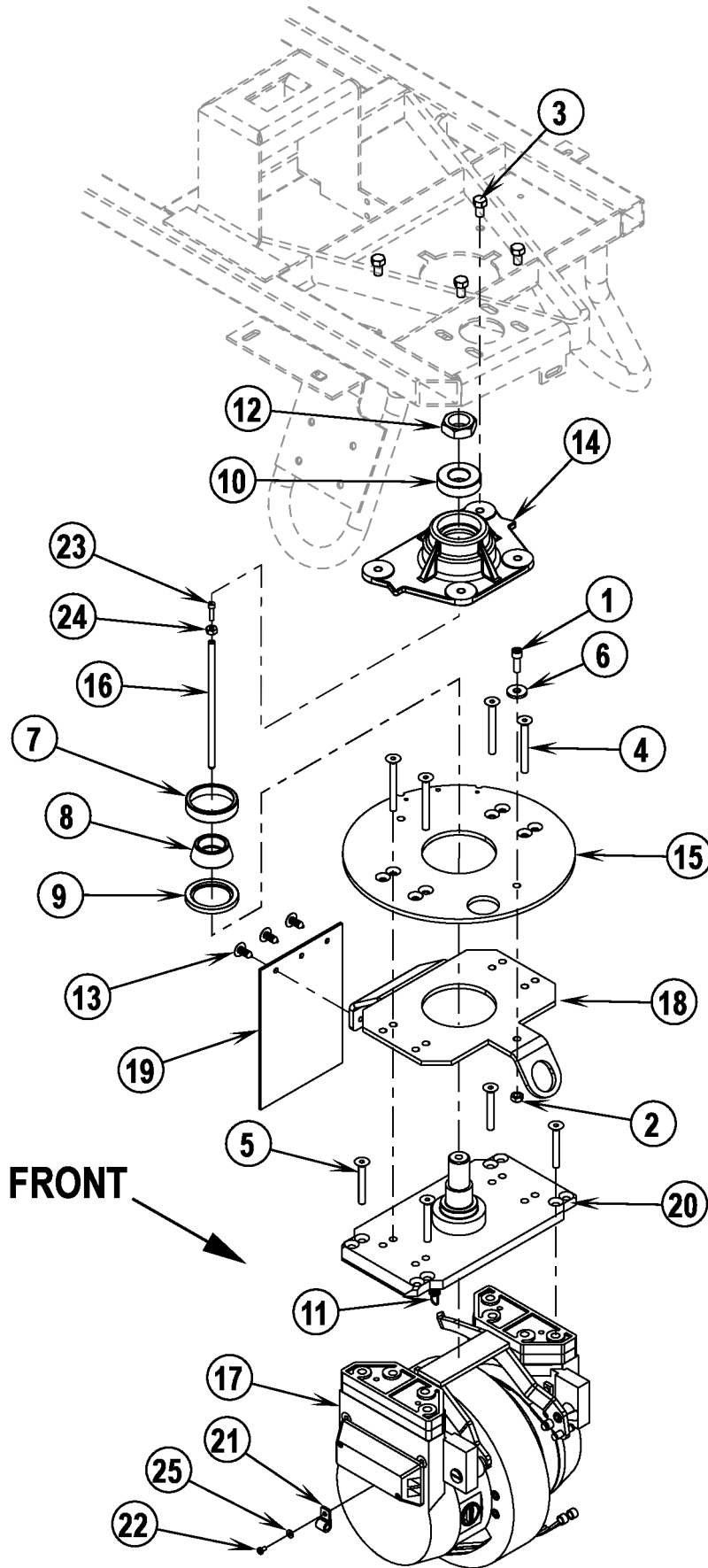


06-7	ELECTRICAL PANEL ASSEMBLY		
08-9	Adhancer™		11

Item	Ref. No.	Qty	Description
1	56002192	2	Scr, Pan Phil 10-24 x .75
2	56003119	6	Scr, Pan Phil SS 1/4-20 x .50
3	56002462	7	Scr, Pan Phil 1/4-20 x .38
4	56002561	3	Nut, Hex W/SHPRF 1/4-20
5	56009020	3	Stud
6	56002098	6	Wsh, Flt SAE 1/4
7	56387316	1	Circuit Breaker, 10 Amp (Control Circuit / F3)
8	56395455	1	Contactactor (Brush Drive / K1)
9	56407193	1	Gasket
10	56412089	1	Fuse, 150 Amp (F1)
11	56412177	1	Horn / Backup Alarm (H1)
12	56459367	1	Boot, Reset Button
13	56459369	1	Boot, Reset Button
14	56469858	3	Standoff, Insulated
15#	56109533	1	Cover, Electrical NOTE 1
16	56314067	1	Controller (A1)
17	56314068	1	Electrical Panel
18	56364294	1	Circuit Breaker, 45 Amp (Wheel Drive / F2)
19#			DELETED
20	56395453	1	Contactactor (Vacuum System / K2)
21	56009051	1	Scr, Pan Phil Thd Form 8-32 x .38
22	56314956	1	Weldment, Harness Guide

= Revised or new since last update

NOTE 1: Electrical Cover 56314065 and Gasket 56407169 are no longer used in production and are OBSOLETE. If you need to replace either of these items please order 56109533.



Item	Ref. No.	Qty	Description
1	56002158	1	Scr, Soc Hd 5/16-18 x .88
2	56002826	1	Nut, Hex Nyl Loc-Thin 5/16-18
3	56003040	4	Scr, Hex Hd Loc 3/8-16 x .62
4	56003273	4	Scr, Soc Hd M8-1.25 x 70mm
5	56003274	4	Scr, Soc Hd M8-1.25 x 55mm
6	56009122	1	Wsh, Flt .344 x .938 x .125
7	56158143	1	Bearing Cup
8	56158151	1	Bearing Cone
9	56171081	1	Seal, Shaft
10	56378380	1	Bearing, Ball
11	56481699	1	Spring
12	56003220	1	Nut, Hex Nyl Loc-Thin 1-14 UNF
13	56003263	3	Rivet, Nylon Tree Push-In
14	56314032	1	Block, Bearing
15	56314116	1	Plate, Steering
16	56314157	1	Rod, Brake
17#	56314268	1	Motor / Drive Wheel Assy (M3) TSBUS2008-1004
*	56314920	1	Drive Wheel Harness Kit
*	56314282	1	Brake Lever Weldment
*	56314289	1	Brake Band
*	56412320	1	Carbon Brush Cover Kit (contains 4 seal rings & 4 brush covers)
*	56412321	1	Sealing Ring
*	56412322	1	Bearing, Ball, Gearbox Side
*	56412323	1	Bearing, Ball, Brush Side
*	56412325	1	Carbon Brush Kit
*	56314291	1	Brake Bar
*	56314269	1	Drive Wheel – P7 Scrubber Compound
**	56412339	1	Drive Wheel – Polyurethane
18	56314278	1	Plate, Splash Guard
19	56314283	1	Splash Guard
20	56314085	1	Spindle Weldment
21	56305317	1	Clamp, P
22	56003653	1	Scr, Pan Phil M4 x 8
23	56003659	1	Scr, Button Soc SS 10-24 x .75
24	56009293	1	Nut, Hex Machine SS 10-24
25	56002006	1	Wsh, Flt SAE #6

* = Not Shown

** = Optional

= Revised or new since last update

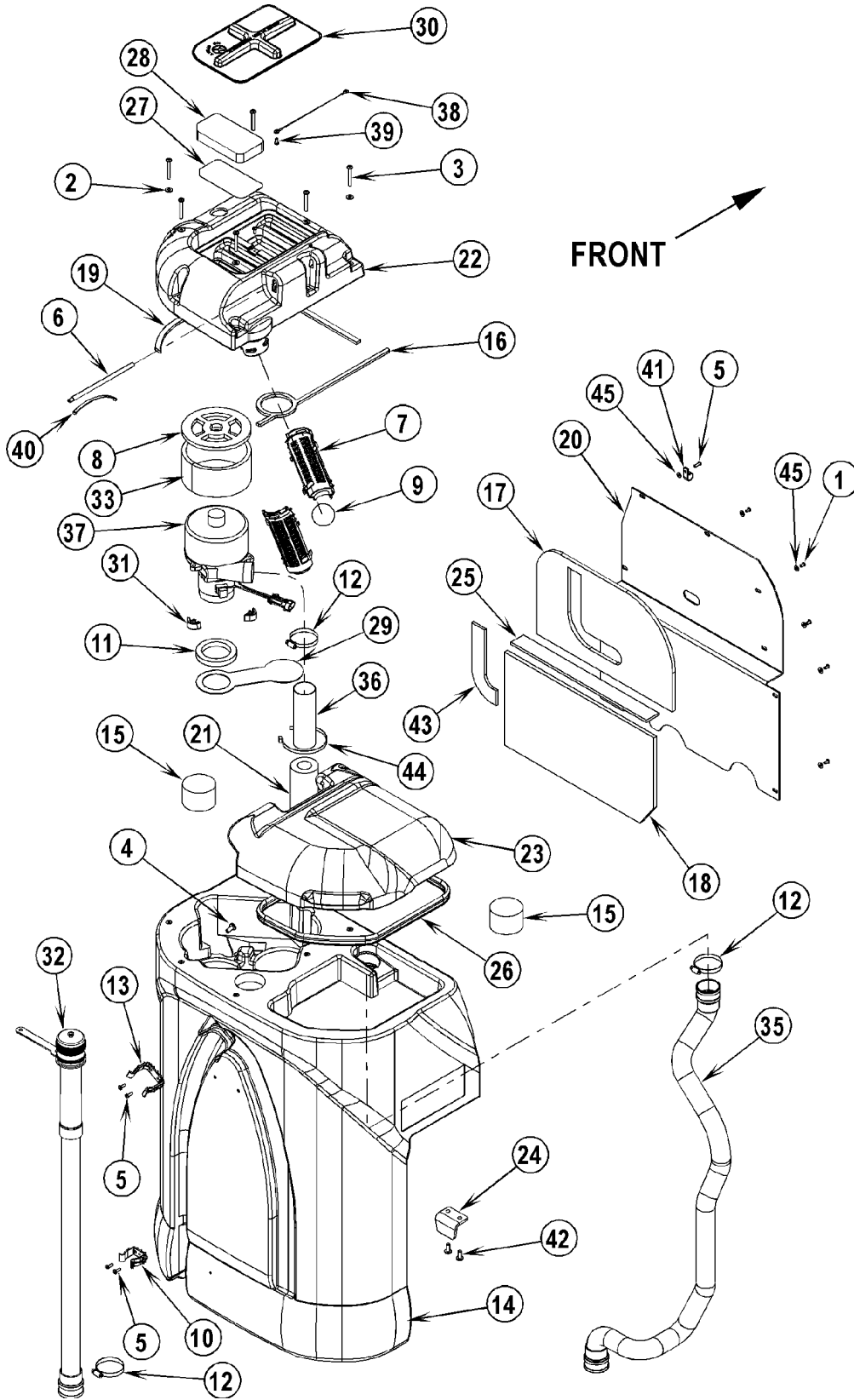
RECOVERY SYSTEM

06-7

14

Advancer™

08-9

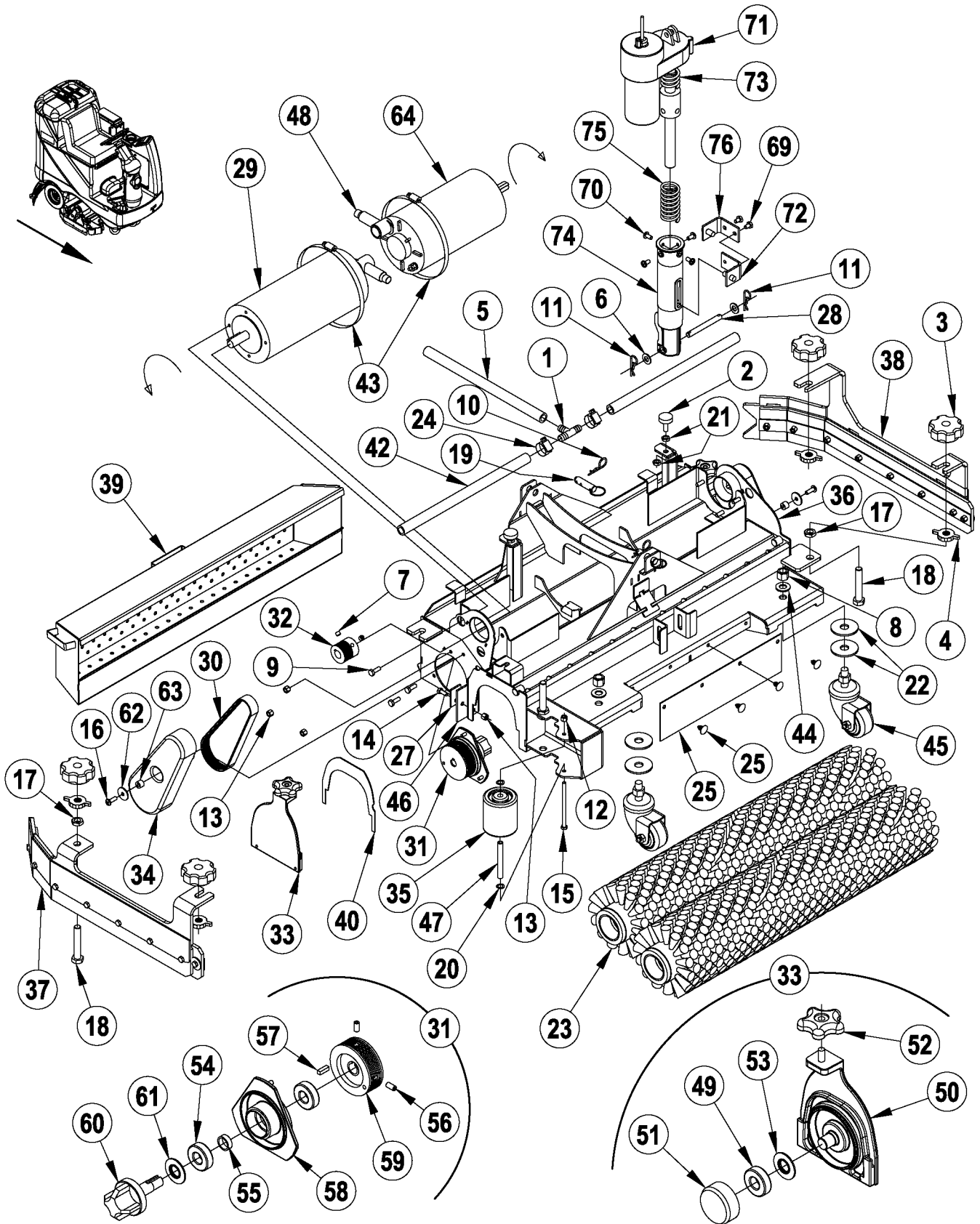


Item	Ref. No.	Qty	Description
1	56002043	8	Scr, Pan Phil 10-24 x .38
2	56002098	7	Wsh, Flt SAE 1/4
3	56002108	6	Scr, Pan Phil 1/4-20 x 2.00
4	56002793	1	Scr, Pan Phil 5/16-18 x .75
5	56002896	5	Scr, Pan Phil SS 10-24 x .62
6	56314115	1	Pin, Cover Pivot
7	56324497	2	Cage, Float
8	56314704	1	Gasket
9	56391690	1	Ball, Float
10	56407361	1	Clamp, Plastic
11	56314760	1	Gasket, Vacuum Duct
12	56440213	3	Clamp, Hose SAE #32
13	56212236	1	Clamp, Plastic
14	56314036	1	Tank, Recovery
15	56314098	2	Foam Cylinder
16	56314099	1	Gasket
17	56314100	1	Muffler, Top Panel
18	56314101	1	Muffler, Bottom Panel
19	56314103	1	Gasket
20	56314749	1	Cover, Exhaust NOTE 1
21	56391807	1	Foam Acoustical NOTE 2
22	56314201	1	Cover, Vac Motor
23	56314203	1	Lid, Recovery
24	56314220	2	Tank Mount Bracket
25	56314706	1	Foam, Sound NOTE 2
26	56314371	1	Gasket
27	56314372	1	Screen, Filter
28	56314373	1	Filter
29	56314376	1	Plate, Separator
30#	56109539	1	Lid, Vac Filter
31	56314484	3	Mount, Vibration
32#	56601404	1	Drain Hose TSBUS2008-985
[]#	56601411	1	Drain Hose Cap Kit
[]#	56601410	1	Drain Hose Extension
33	56314488	1	Muffler, Vac
34#			Deleted
35	56314533	1	Vac Hose Assy
36	56458457	1	Hose, Vac 2.00 x 6.0 x 975018 NOTE 2
37	56397228	1	Motor, Vac 36VDC (M5)
*	56212223	1	Carbon Brush Set
38	56314400	1	Wire Rope, 9 Inch
39	56009191	2	Scr, Pan Phil Plastite 10-14 x .50
40	56314509	1	Spring
41	56385564	1	Clamp, P
42	56002507	4	Scr, Pan Phil 1/4-20 x .75
43	56314705	1	Foam, Sound NOTE 2
44	56477613	1	Tie, Cable NOTE 2
*	56314251	1	Harness Vac
45#	56001954	9	Wsh, Flt SAE #10

[] = Not Shown

= Revised or new since last update

NOTE 1: 56314749 replaces previous parts 56314199 and 56314200 after serial number 1750239.**NOTE 2:** Used on machines built after serial number 1750239.

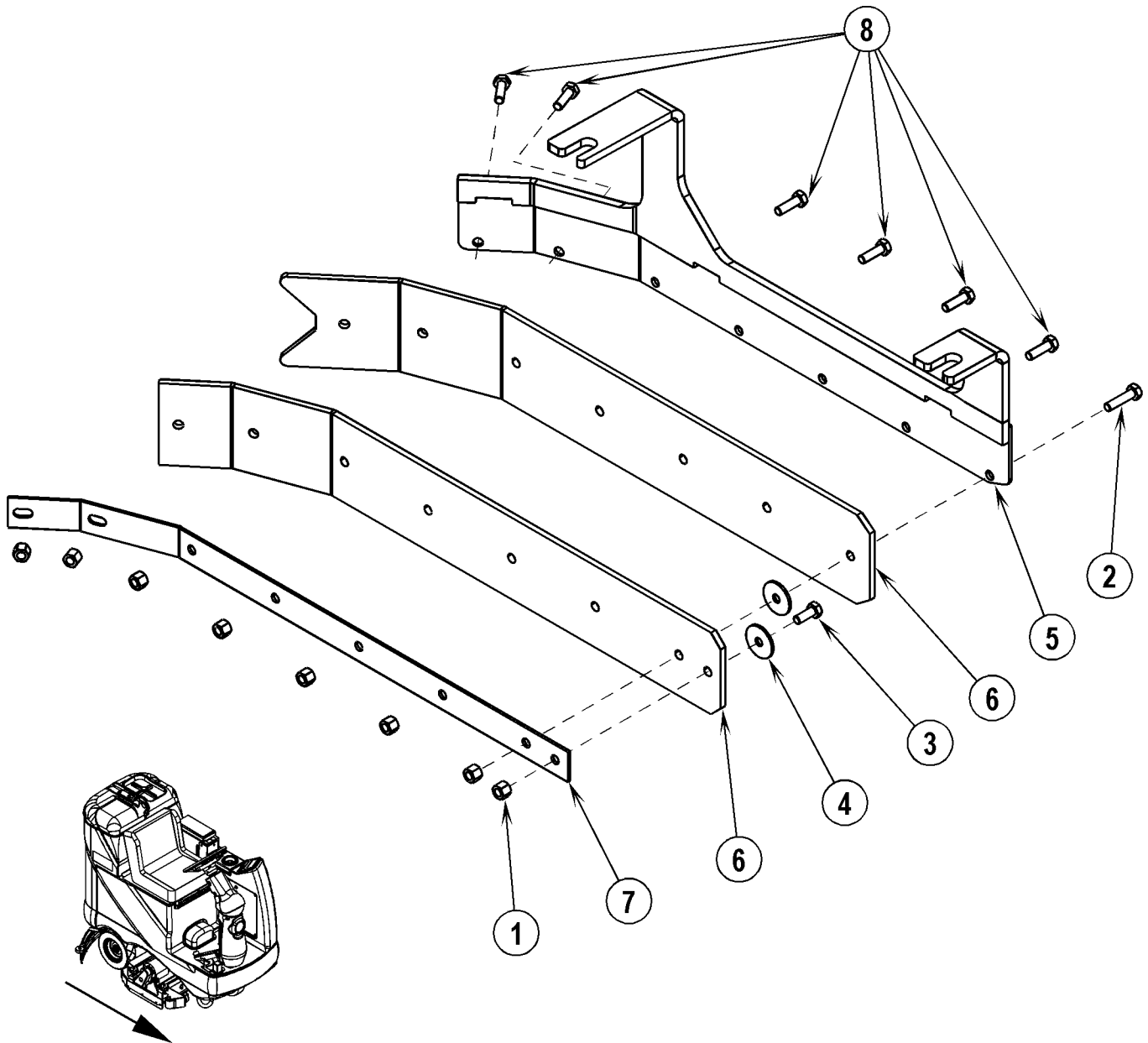


Item	Ref. No.	Qty	Description	Item	Ref. No.	Qty	Description
1	56262549	1	Tee, Barb	49	56106070	1	Bearing, Ball
2	56401783	2	Leveler	50	56316086	1	Idler Bearing Plate, Polished
3	56407114	4	Knob	51	56316175	1	Hub, Aluminum
4	56407334	4	Knob	52	56396254	1	Knob
5	56409462	1	Hose, Spiral	53	56407558	1	Washer, Bearing
6	56002063	2	Wsh, Flt SAE 3/8				
7	56002086	4	Scr, Soc Set Loc 5/16-18 x .25	54	56002119	2	Scr, Soc Set Loc 1/4-20 x .50
8	56002770	2	Nut, Hex Nyl Loc 1/2-13	55	56003237	1	Key, Sq, .19 x .62
9	56002948	6	Scr, Hex Hd Loc 1/4-20 x .75	56	56106070	2	Bearing, Ball
10	56002959	2	Pin, Cotter Hair	57	56315405	1	Bearing Plate
11	56003120	2	Pin, Cotter Hair .0915 x .375	58	56316054	1	Sheave, Poly-V
12	56003403	1	Nut, Hex Nyl Loc M6-1 (qty of 2 on 32")	59	56316072	1	Spindle, Stainless
13	56003426	8	Nut, Hex Nyl Loc SS M6-1	60	56407389	1	Spacer
14	56003431	2	Scr, Hex SS M6-1 x 16mm	61	56407558	1	Washer, Bearing
15	56003492	1	Scr, Hex M6-1 x 95mm (qty of 2 on 32")	62	56009060	2	Wsh, Flt SS .260 x 1.000 x .074
16	56009126	2	Scr, Pan Phil Thd Form 1/4-20 x .75	63	56244941	2	Bushing .31 x .50 x .40
17	56003657	4	Nut, Hex Jam SS M12-1.75	64	56315611	1	Motor, 36 VDC, .75 HP, 1800 RPM
18	56003658	4	Scr, Hex Thd to Hd SS M12-1.75 x 70mm	65			Intentionally Omitted
19	56003671	2	Pin, Ring .50 x 1.25	66			Intentionally Omitted
20	56009045	2	Wsh, Bowed .375 x .578 x .060 (qty of 4 on 32")	67			Intentionally Omitted
21	56009086	4	Nut, Hex Jam 5/16-18	68			Intentionally Omitted
22	56003739	4	Wsh, Flt Nylon .625 x 2.000 x .125	69	56009019	2	Scr, Hex Thd Form 1/4-20 x .38
23	56316050	2	Brush, Wash & Shine (28") NOTE 1	70	56009062	4	Scr, Pan Phil Thd Form 1/4-20 x .50
	56316051	2	Brush, Wash & Shine (32") NOTE 1	71	56393303	1	Actuator, Motor
24	56112771	2	Clamp, Hose SAE #10	*	56470433	1	Carbon Brush Kit
25	56316193	1	Kit, Splash Guard NOTE 2	*	56393790	2	Limit Switch
*	56316210	2	Harness, Brush Motor (Not Shown)	*	56388520	1	Plastic Nut
*	56316124	1	Harness, Scrub Brush Ground (Not Shown)	72	56420020	1	Nut Retainer
27	56314436	2	Strap	73	56412071	1	Compression Spring
28	56315161	1	Pin	74	56412262	1	Housing, Spring
29	56316052	1	Motor, 36 VDC, 1.25 HP, 3000 RPM	75	56420018	1	Compression Spring
30	56316053	2	Belt, Auto Tension	76	56420019	1	Nut Retainer
31	56316057	2	Drive End Assy (items 54-61)				* = Not Shown
32	56316066	2	Sheave, Poly-V				
33	56316087	2	Idler End Assy, Polished (items 49-53)				
34	56316088	2	Cover, Belt				
35	56316089	1	Wheel (qty of 2 on 32")				
36	56316127	1	Housing Weld't (28")				
	56316128	1	Housing Weld't (32")				
37	56316141	1	Right Skirt Assy (see Skirt Assemblies)				
38	56316142	1	Left Skirt Assy (see Skirt Assemblies)				
39	56316144	1	Hopper Weld't (28")				
	56316145	1	Hopper Weld't (32")				
40	56316191	2	Gasket				
41			Intentionally Omitted				
42	56316553	2	Manifold, PVC 28 Adv (28")				
	56316552	2	Manifold, PVC 32 Adv (32")				
43	56355488	2	Clamp, Hose SAE #96				
44	56001879	2	Wsh, Flt SAE 1/2				
45	56407344	2	Caster Wheel				
46	56407391	2	Blade				
47	56412176	1	Bushing (qty of 2 on 32")				
48	56493357	2	Insulator, Terminal				

NOTE 1: Cannot use any other brushes.

NOTE 2: Splash Guard Kit includes; Splash Guard and 4 panel clips.

Left Skirt Assembly Shown



06-7

SKIRT ASSEMBLIES

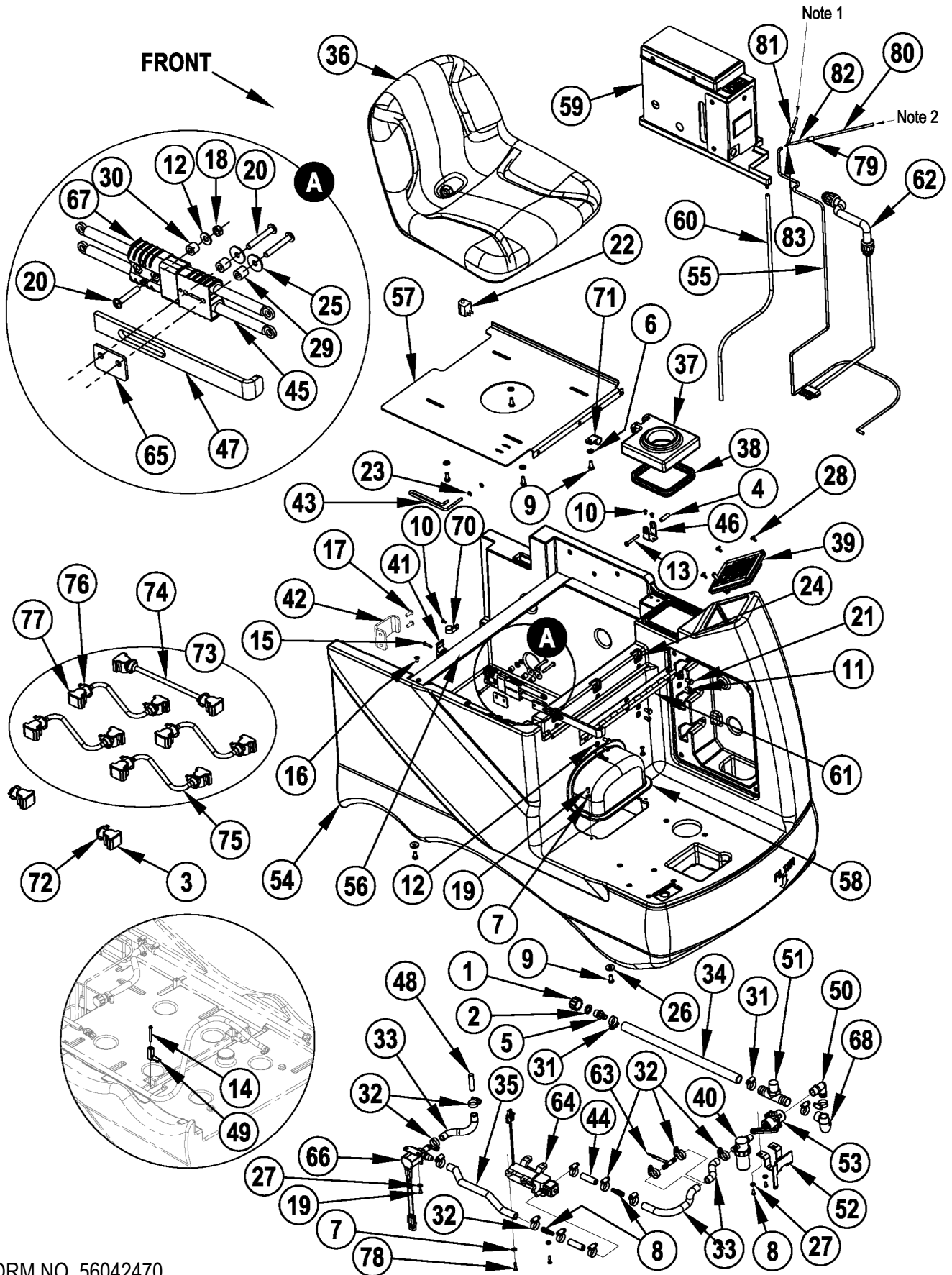
06-12

Adhancer™**19**

Item	Ref. No.	Qty	Description
	56316142	1	Left Skirt Assembly
	56316141	1	Right Skirt Assembly
1	56003426	8	Nut, Hex Nyl Loc SS M6-1 NOTE 1
2	56003430	1	Scr, Hex SS M6-1 x 25mm NOTE 1
3	56003431	1	Scr, Hex SS M6-1 x 16mm NOTE 1
4	56009060	2	Wsh, Flt SS .260 x 1.000 x .074 NOTE 1
5	56316140	1	Skirt Bracket Weld't (left skirt assembly)
	56316139	1	Skirt Bracket Weld't (right skirt assembly)
6	56316194	1	Kit, Side Skirt NOTE 2
7	56316183	1	Retainer, Skirt NOTE 1
8	56003454	6	Scr, Hex Thd to Hd SS M6-1 x 20mm NOTE 1

NOTE 1: Quantities are for one skirt assembly only, there are two skirt assemblies on the machine.

NOTE 2: Side Skirt Kit includes 4 side skirt blades (2 for each side skirt).



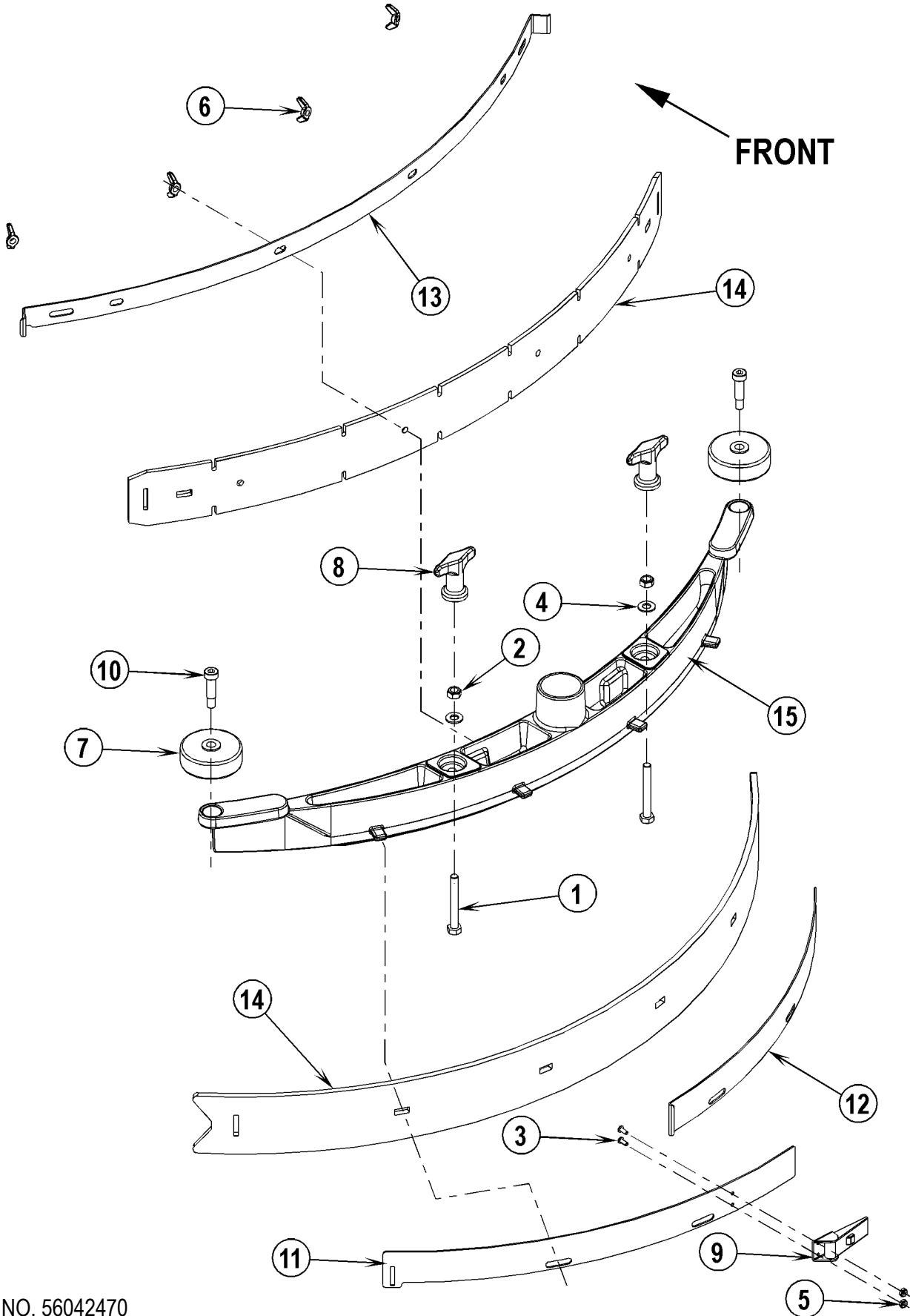
Item	Ref. No.	Qty	Description	Item	Ref. No.	Qty	Description
1	56255076	1	Cap, Pipe GHT Nylon	*	56316114	1	Harness, Main
2	56368776	1	Washer, Rubber	45	56314253	1	Charge Connector Assy
3	56372673	2	Boot, Battery Post	46	56314264	1	Hinge Bracket
4	56468553	1	Bushing, .27 x .37 x 1.3	47	56314292	1	Bar, Disconnect
5	56900273	1	Barb	48	56314904	1	Tube
6	56001939	4	Wsh, Flt SAE 5/16	49	56314608	4	Clamp, Cable
7	56001954	5	Wsh, Flt SAE #10	50	56314757	1	Barb, 90 Elbow 3/4 x 1/2NPT
8	56418669	2	Reducer, Barb	51	56314758	1	Tee, Barb
9	56002035	8	Scr, Hex 5/16-18 x .62	52	56314881	1	Bracket, Valve
10	56002043	3	Scr, Pan Phil 10-24 x .38	53	56314899	1	Valve, Solution
11	56002066	3	Scr, Pan Phil 1/4-20 x .62	54	56314940	1	Solution Tank
12	56002098	7	Wsh, Flt SAE 1/4	55	56314947	1	Hose, Chem Resistant
13	56002108	1	Scr, Pan Phil 1/4-20 x 2.00	56	56314943	1	Brkt, Seat
14	56002171	4	Scr, Pan Phil 10-24 x 2.00	57	56314949	1	Weld't, Seat Mount
15	56002674	5	Scr, Pan Phil 10-24 x 1.00	58	56314960	1	Cover, Actuator
16	56002755	1	Scr, Flt Phil 1/4-20 x .50	59	56316216	1	Assembly, Detergent Inject.
17	56002793	2	Scr, Pan Phil 5/16-18 x .75	60	56314965	1	Hose, PVC 1/4 x 3/8
18	56002840	1	Nut, Hex Nyl Loc-Thin 1/4-20	61	56314973	1	Hinge
19	56002900	7	Scr, Pan Phil SS 10-24 x .50	62	56314980	1	Harness, Chemical System
20	56002997	3	Scr, Pan Phil 1/4-20 x 1.75	63	56314983	1	Tee Assembly
21	56003178	3	Scr, Hex M8-1.25 x 16mm	64	56315108	1	Pump, 24VDC
22	7-82-00050	1	Switch (S2)	65	56397189	1	Spacer
23	56003268	2	Ring, Ret Ext Type E Reinf. 0.25 Dia	66	56397215	1	Solenoid Valve Assy. 36V
24	56003389	3	Nut, Hex Nyl Loc M8-1.25	67	56397508	1	Charge Connector Assy
25	56009002	2	Wsh, Flt .266 x .906 x .060	68	56410162	1	Hose, Spiral .75 ID x 7.00
26	56009122	4	Wsh, Flt .344 x .938 x .125	69			Intentionally Omitted
27	56009205	4	Wsh, Flt SS .219 x .500 x .047/.062	70	56442003	1	Clamp, P
28	56009206	4	Scr, Truss Phil-Blk 10-24 x .50	71	56469380	1	Clamp, P
29	56046309	2	Spacer, Phenolic	72	56478246	2	Tie, Cable
30	56050872	1	Spacer, Phenolic	73	56314339	1	Kit, Battery Connector (items 74-77)
31	56112771	4	Clamp, Hose SAE #10	74	56441600	1	Cable, Battery
32	56219932	12	Clamp, Hose SAE #6	75	56456460	4	Cable, Battery
33	56262180	3	Hose, Spiral .50 Id x 7.00	76	56478246	10	Tie, Cable
34	56263218	1	Hose, .75 Clear PVC	77	56372673	10	Boot, Battery Post
35	56409462	1	Hose, Spiral .50 ID x 12	78	56002733	2	Scr, Pan Phil 10-24 x .88
36	8-69-00022	1	Seat NOTE 3	*	56314119	1	Spacer, Battery
37	56314066	1	Cover, Solution Tank, Assy		56316209	1	Check Valve Assembly (items 79-83)
38	56314069	1	Gasket	79	56315522	1	Check Valve, 1/8 Barb, 125 PSI
39	56316109	1	Control Panel Assembly	80	56315524	1	Hose, Chem Resistant, 7"
40	56314147	1	Strainer	81	56316208	1	Check Valve, 1/8 Barb, 125 PSI
41	56314155	5	Clamp, Cable	82	56316211	3	Hose, Chem Resistant, 2"
42	56316526	1	Tank Mount Bracket	83	56413691	1	Fitting, Y, Barb, .125
43	56314223	1	Prop Rod				
44	56412187	2	Solution Drain Hose				

* = Not Shown

NOTE 1: 2" hose - to chemical pump outlet.

NOTE 2: 7" hose - locate near and point towards bottom of chemical pump compartment.

NOTE 3: Seat 56314035 is obsolete and replaced by 8-69-00022 in production. Order Seat kit 56109292 to replace in the field.



Item	Ref. No.	Qty	Description
	56314020	1	Squeegee Assy (28")
	56314358	1	Squeegee Assy (32")
1	56003736	2	Scr, Hex Hd SS 5/16-18 x 2.75
2	56002851	2	Nut, Hex Nyl Loc-Thin SS 5/16-18
3	56002909	2	Scr, Pan Phil SS 6-32 x .38
4	56002938	2	Wsh, Flt SAE SS 5/16
5	56002907	2	Nut, Hex Nyl Loc SS 6-32
6	56009111	4	Nut, Wing SS 1/4-20
7	56324350	2	Wheel
8	56370711	2	Nut, Thumb
9	56471194	1	Latch Assy
10	56003472	2	Scr, Soc Shd .38 x 1.00 x 5/16-18
11	56314026	1	Strap, Left Rear (28")
	56314323	1	Strap, Left Rear (32")
12	56314027	1	Strap, Right Rear (28")
	56314324	1	Strap, Right Rear (32")
13	56314028	1	Strap, Front (28")
	56314322	1	Strap, Front (32")
14	56314303	1	Kit, Standard Squeegee Blade (28")
	56314060	1	Kit, Standard Squeegee Blade (32")
15	56314271	1	Squeegee Tool, Cast (28")
	56314325	1	Squeegee Tool, Cast (32")
			28" Squeegee Blade Kits
**	56314303	1	Kit, Standard Squeegee Blade NOTE 1
**	56314304	1	Kit, Linatex Squeegee Blade NOTE 1
**	56314305	1	Kit, Neoprene Squeegee Blade NOTE 1
			32" Squeegee Blade Kits
**	56314060	1	Kit, Standard Squeegee Blade NOTE 1
**	56314061	1	Kit, Linatex Squeegee Blade NOTE 1
**	56314062	1	Kit, Neoprene Squeegee Blade NOTE 1

** = Optional, Not Included

NOTE 1: All squeegee blade kits include both front and rear squeegee blades.



06-7

SQUEEGEE SYSTEM

08-9

Adhancer™**25**

Item	Ref. No.	Qty	Description
1	56001884	2	Nut, Hex Jam 5/16-24
2	56002082	1	Pin, SPR .19 x 1.00
3	56002866	6	Nut, Hex Nyl Loc-Thin 5/16-24
4	56003262	2	Ring, Ret Ext Type E .38 Dia.
5	56003497	1	Nut, Wing SS 5/16-24
6	56412067	1	Connecting Rod
7	56412088	1	Pin
8	56412124	1	Wheel
9	56412208	1	Roller
10	56412216	2	Spring, Extension
11	56412248	4	Spacer, Squeegee Cable
12	56412284	1	Knob, Squeegee Adjust
13	56412314	2	Connecting Rod
14	56003222	2	Pin, Cotter Hair
15	56003223	1	Pin, Cot Hair .148 x Dia .62/1.00
16	56003656	4	Clevis Pin .375 x 2.25
17	56314023	1	Squeegee Mount Weld't.
18	56314020	1	Squeegee Assy (28")
	56314358	1	Squeegee Assy (32")
19	56395755	1	Rod End
20	56397230	1	Lift Actuator, Squeegee (M2)
21	56412312	2	Rod End, 5/16
22	56412313	2	Rod End, 5/16
23	56412340	1	Cable Assembly
24	56477756	1	Rod End

* = Not Shown

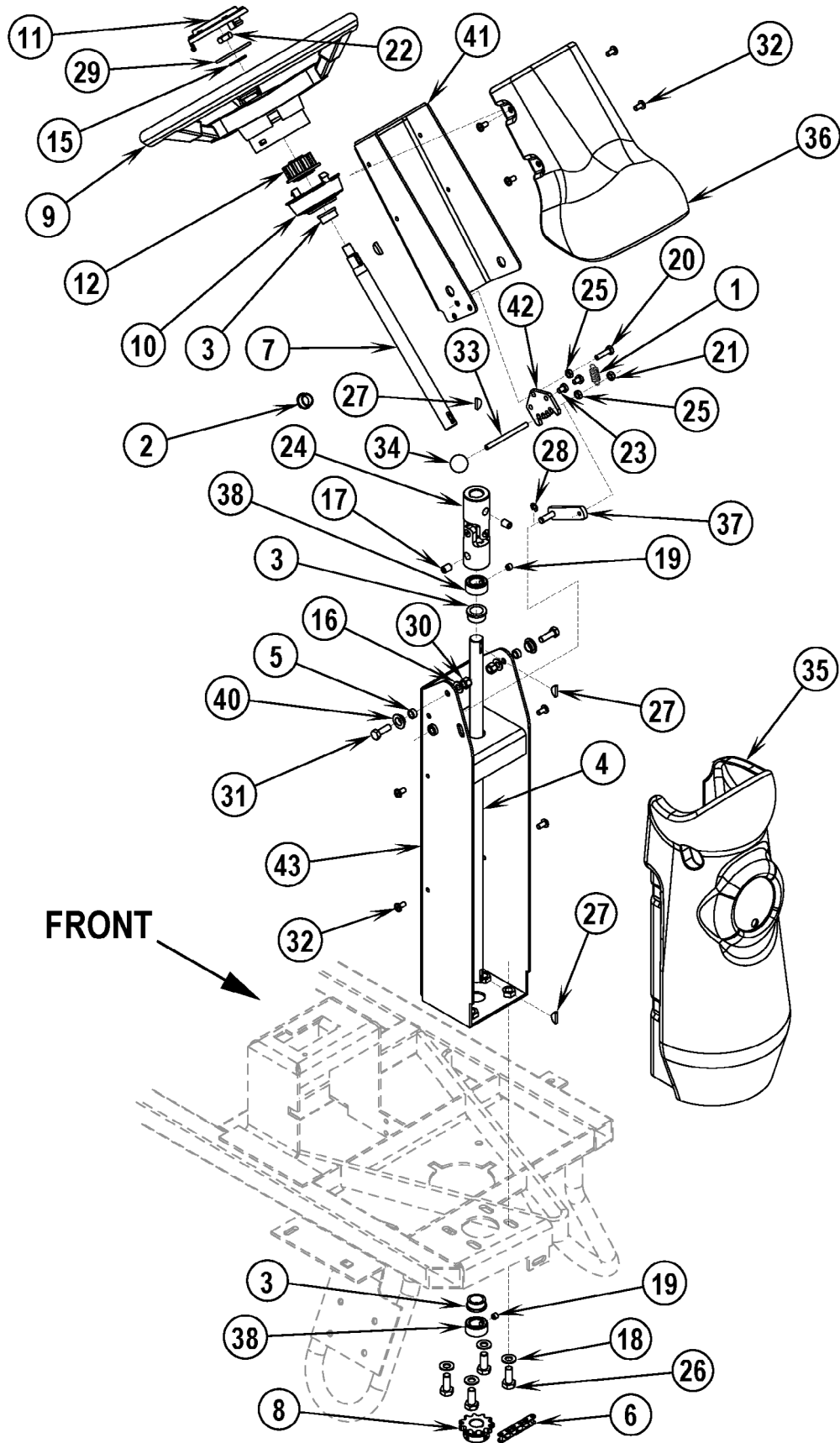
STEERING COLUMN ASSEMBLY

06-7

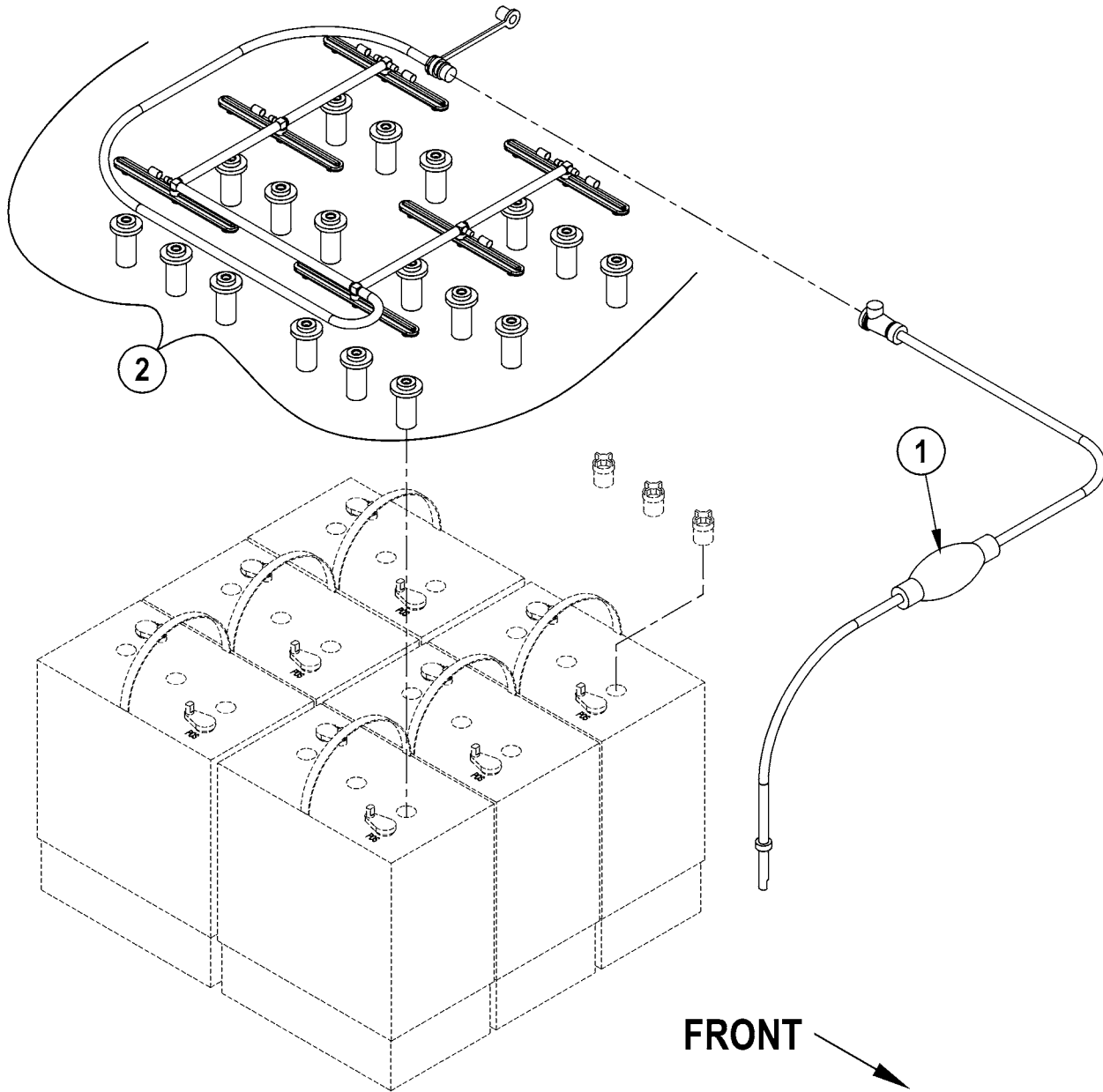
26

Adhancer™

08-3



Item	Ref. No.	Qty	Description
1	56305072	1	Spring, Extension .075
2	56900041	1	Plug, Cap
3	56250414	3	Bearing, Flange
4	56314195	1	Shaft, Lower Steering
5	56320595	2	Bushing .32 x .50 x .28
6	56412198	1	Chain, Roller
7	56420059	1	Shaft, Upper Steering
8	56471148	1	Sprocket
9	56497306	1	Steering Wheel
10	56497308	1	Cup
11	56497543	1	Cap
12	56497560	1	Wheel Adapter
13	56477613	9	Tie, Cable (Not Shown)
14	56478246	5	Tie, Cable (Not Shown)
15	56001879	1	Wsh, Flt SAE 1/2
16	56001939	2	Wsh, Flt SAE 5/16
17	56001958	2	Scr, Soc Set Loc 3/8-16 x .50
18	56002063	4	Wsh, Flt SAE 3/8
19	56002086	2	Scr, Soc Set Loc 5/16-18 x .25
20	56002093	1	Scr, Hex 1/4-20 x 1.00
21	56002840	1	Nut, Hex Nyl Loc-Thin 1/4-20
22	56002843	1	Nut, Hex Nyl Loc-Thin 1/2-13
23	56003039	2	Scr, Hex Hd Loc 1/4-20 x .50
24	56454081	1	Universal Joint
25	56003145	2	Nut, Hex Jam SS 1/4-20
26	56003186	4	Scr, Hex Thd To Hd M10-1.5 x 25mm
27	56003228	4	Key, Wdf .75 x .19
28	56003261	1	Ring, Ret Ext Type E 0.31 Dia
29	56003342	1	Washer Flt .88 x 2.25 x .13
30	56003389	2	Nut, Hex Nyl Loc M8-1.25
31	56003436	2	Scr, Hex SS M8-1.25 x 25mm
32	56009062	8	Scr, Pan Phil Thd Form 1/4-20 x .50
33	56413664	1	Rod
34	56440817	1	Knob
35	56314295	1	Shroud, Lower Column
36	56314296	1	Shroud, Upper Column
37	56413661	1	Steering Pawl Weldment
38	56367095	2	Collar, Shaft
39			Deleted Intentionally
40	56413211	2	Bearing, Flange .625 x .500 x .250
41	56413657	1	Column, Upper
42	56413658	1	Ratchet, Steering Column
43	56413659	1	Lower Column Weldment



06-7

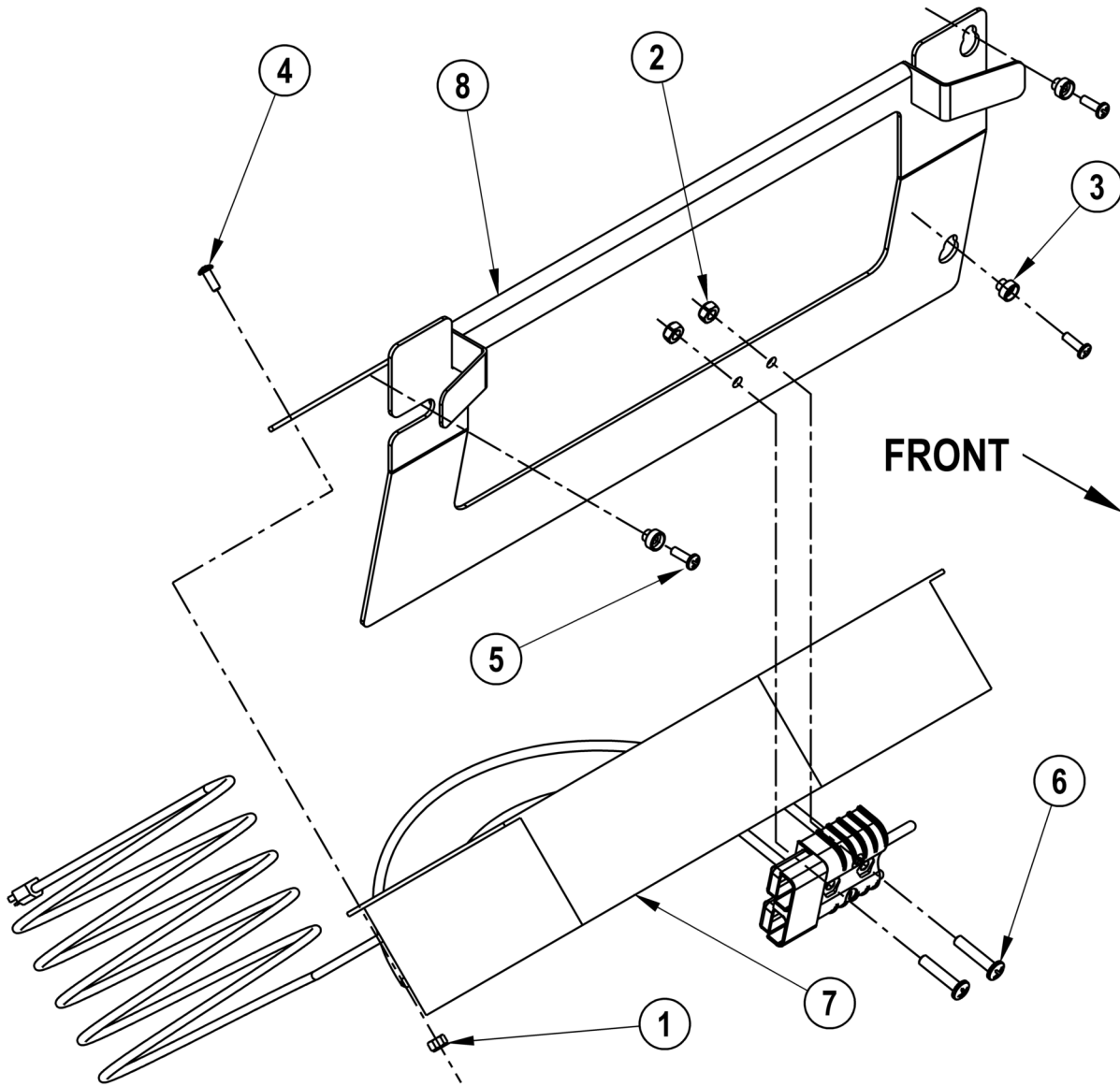
BATTERY WATERING SYSTEM

08-9

Adhancer™

29

Item	Ref. No.	Qty	Description
	56314974	1	Battery Watering System (items 1-2) (Standard)
1	56314978	1	Pump
2	56314979	1	Manifold Assembly



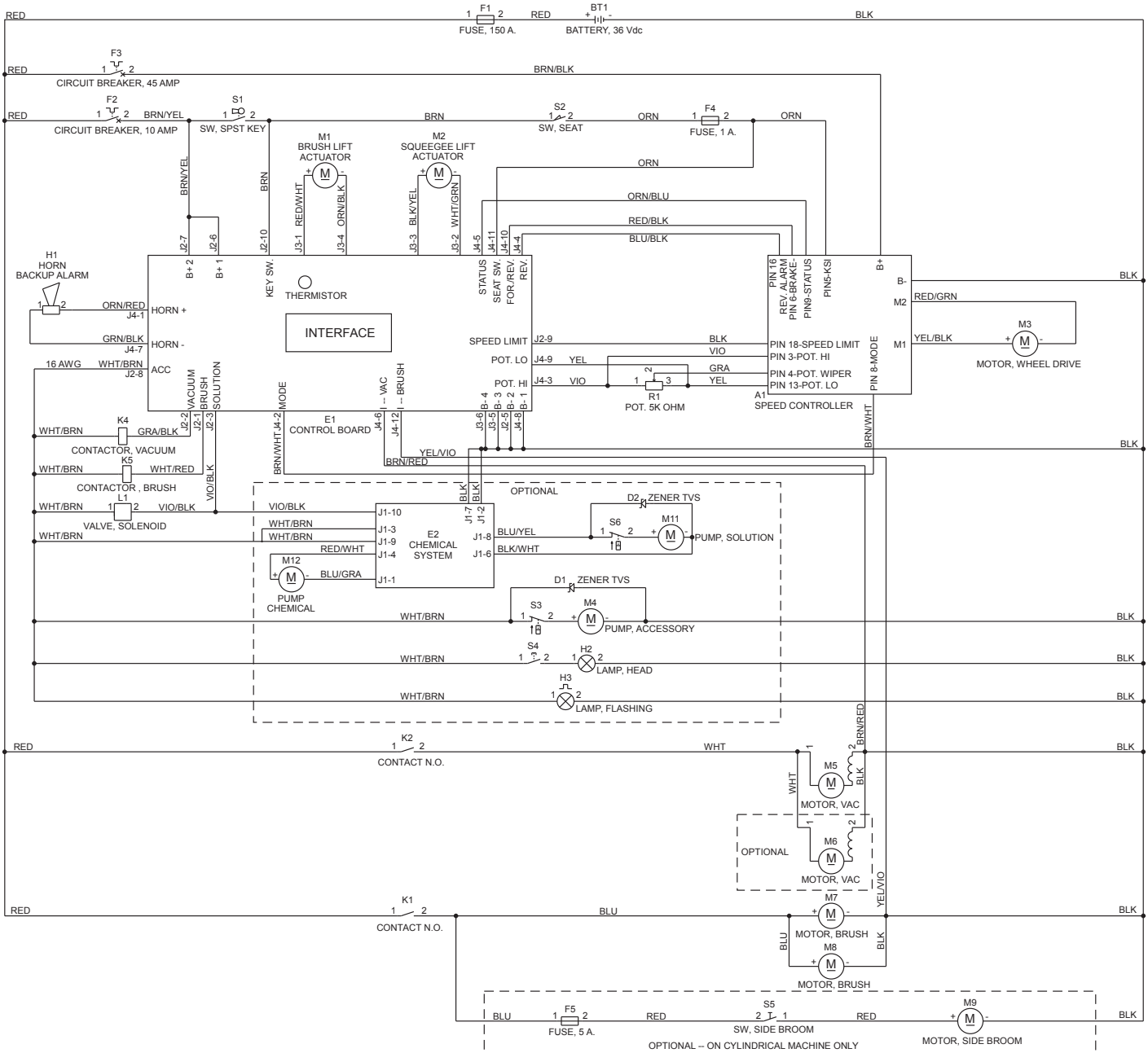
06-7

ON-BOARD CHARGER

08-9

Adhancer™**31**

Item	Ref. No.	Qty	Description
	56314753	1	Kit, On-Board Charger (items 1-8) (Standard) TSBUS2008-984
	56040787	1	Instruction Sheet
1	56002768	6	Nut, Hex Nyl Loc 10-24
2	56002840	2	Nut, Hex Nyl Loc-Thin 1/4-20
3	56412310	3	Spacer, Stepped
4	56001993	6	Scr, Pan Phil 10-24x.50
5	56002124	3	Scr, Pan Phil 10-24x.62
6	56002825	2	Scr, Pan Phil 1/4-20 x 1.25
7	56314750	1	Charger, 36V, 25AMP
8	56314752	1	Weldment, Charger



Item	Ref. No.	Qty	Description	Item	Ref. No.	Qty	Description
A1	56314067	1	Controller	M7	56316052	1	Motor, 36VDC, 1.25HP, 3000 RPM
BT1	N/A		Battery	*	56412287	1	Motor Brush/Spring Kit (for 56316052)
E1	56316109	1	Control Panel Assembly	M8	56315611	1	Motor, 36VDC, .75HP, 1800 RPM
E2	56316217	1	Control Assembly	*	56412287	1	Motor Brush/Spring Kit (for 56315611)
F1	56412089	1	Fuse, 150 Amp	M9			Intentionally omitted
F2	56387316	1	Circuit Breaker, 10 Amp (Control Circuit)	M11	56315108	1	Pump, Solution
F3	56364294	1	Circuit Breaker, 45 Amp (Wheel Drive)	M12	56314984	1	Pump, Chemical
F4	N/A	1	Fuse, 1 Amp	R1	56454740	1	Potentiometer, 5K
F5			Intentionally omitted	S1	56396188	1	Switch, Key
H1	56412177	1	Horn / Backup Alarm	*	56396189	1	Key, Spare
H2	56314063	1	Headlight (optional)	S2	7-82-00050	1	Switch, Seat
H3	56416433	1	Strobe Light (optional)	S3	N/A	1	Switch, Pump (part of M4)
K1	56395455	1	Contactora, Brush Motor	S4	N/A	1	Switch, Headlight (part of H2)
K2	56395453	1	Contactora, Vac Motor	S5			Intentionally omitted
L1	56397215	1	Solenoid Valve	S6	N/A	1	Switch, Pump (part of M11)
M1	56393303	1	Lift Actuator, Brush				* = Not Shown
*	56470433	1	Carbon Brush Kit				** = Optional
*	56393790	2	Limit Switch				# = Revised or new since last update
*	56388520	1	Plastic Nut				
M2	56397230	1	Lift Actuator, Squeegee				
M3#	56314268	1	Motor, Drive Wheel TSBUS2008-1004				
*	56314282	1	Brake Bar				
*	56314289	1	Brake Band				
*	56412320	1	Carbon Brush Cover Kit (contains 4 seal rings & 4 brush covers)				
*	56412321	1	Sealing Ring				
*	56412322	1	Bearing, Ball, Gearbox Side				
*	56412323	1	Bearing, Ball, Brush Side				
*	56412325	1	Carbon Brush Kit				
*	56314269	1	Drive Wheel – P7 Scrubber Compound				
**	56412339	1	Drive Wheel – Polyurethane				
M4	56212014	1	Motor, Pump (optional)				
M5	56397228	1	Motor, Vac 36VDC				
*	56212223	1	Carbon Brush Set				
M6	56397228	1	Motor, Vac 36VDC (optional)				
*	56212223	1	Carbon Brush Set				



**Nilfisk
Advance**

setting standards

Nilfisk-Advance, Inc.
14600 21st Avenue North
Plymouth, MN 55447-3408
www.nilfisk-advance.com
Phone: 800-989-2235
Fax: 800-989-6566
©2008 Nilfisk-Advance, Inc.